



BANCA D'ITALIA
EUROSISTEMA

Temi di Discussione

(Working Papers)

Bank quality, judicial efficiency and borrower runs:
loan repayment delays in Italy

by Fabio Schiantarelli, Massimiliano Stacchini and Philip Strahan

July 2016

Number

1072



BANCA D'ITALIA
EUROSISTEMA

Temi di discussione

(Working papers)

Bank quality, judicial efficiency and borrower runs:
loan repayment delays in Italy

by Fabio Schiantarelli, Massimiliano Stacchini and Philip Strahan

Number 1072 - July 2016

The purpose of the Temi di discussione series is to promote the circulation of working papers prepared within the Bank of Italy or presented in Bank seminars by outside economists with the aim of stimulating comments and suggestions.

The views expressed in the articles are those of the authors and do not involve the responsibility of the Bank.

Editorial Board: PIETRO TOMMASINO, PIERGIORGIO ALESSANDRI, VALENTINA APRIGLIANO, NICOLA BRANZOLI, INES BUONO, LORENZO BURLON, FRANCESCO CAPRIOLI, MARCO CASIRAGHI, GIUSEPPE ILARDI, FRANCESCO MANARESI, ELISABETTA OLIVIERI, LUCIA PAOLA MARIA RIZZICA, LAURA SIGALOTTI, MASSIMILIANO STACCHINI.

Editorial Assistants: ROBERTO MARANO, NICOLETTA OLIVANTI.

ISSN 1594-7939 (print)

ISSN 2281-3950 (online)

Printed by the Printing and Publishing Division of the Bank of Italy

BANK QUALITY, JUDICIAL EFFICIENCY AND BORROWER RUNS: LOAN REPAYMENT DELAYS IN ITALY

by Fabio Schiantarelli*, Massimiliano Stacchini** and Philip E. Strahan***

Abstract

Exposure to liquidity risk makes banks vulnerable to runs from both depositors and from wholesale, short-term investors. This paper shows empirically that banks are also vulnerable to run-like behaviour from borrowers who delay their loan repayments (default). Firms in Italy defaulted more against banks with high levels of past losses. We control for borrower fundamentals with firm-quarter fixed effects; thus, identification comes from a firm's choice to default against one bank versus another, depending on their health. This 'selective' default increases where legal enforcement is weak. Poor enforcement can therefore create a systematic loan risk by encouraging borrowers to default en masse once the continuation value of their bank relationships comes into doubt.

JEL Classification: G2.

Keywords: bank lending, financial distress.

Contents

1. Introduction	5
2. Literature Review	9
3. Data description.....	13
3.1 Some facts on loan quality, bank quality and judicial efficiency in Italy	15
4. Econometric methods and results.....	19
4.1 Baseline result: accumulated bad loans encourage firms to delay repayment (default).....	20
4.1.1 Results by firm size and bank share	22
4.2 Judicial efficiency and selective default.....	22
4.3 Strategic v. selective default.....	24
4.4 Robustness tests.....	26
4.4.1 Term loans only.....	26
4.4.2 First delay	27
4.4.3 Control for loan terms	27
4.4.4 Borrower and lender in same court jurisdiction	28
4.4.5 Controlling for possible endogeneity of borrower-lender matching	29
4.4.6 Allowing for differences across macro regions.....	29
5. Conclusions	30
References	32
Data appendix.....	37
Tables and figures	39

* Boston College and IZA; ** Bank of Italy; *** Boston College and NBER.

1 Introduction¹

Under the traditional view of [Diamond and Dybvig \[1983\]](#), provision of liquidity insurance to households and firms exposes banks to the risk of a destructive run: depositors may demand cash solely because they expect others to do the same. In the aftermath of the financial and sovereign debt crises, these old-style depositor runs have been the exception rather than the rule.² But even in these modern crises, we have seen panic-motivated instances of drying up of wholesale, short-term debt markets, and increases in collateral demands in asset-backed commercial paper and repo markets.³ These episodes, often called ‘runs on the shadow banking system in the US’, create similar pressures on banks as traditional depositor runs, making it hard for them to fund new loans and raising the likelihood that fire sales of old ones can cause insolvency. Similar liquidity pressures from the asset-side of banking emerged following the collapse of Lehman, as firms drew down credit lines at banks perceived to be more likely to restrict access to future liquidity.⁴

Both the traditional literature as well as recent studies of financial crises emphasize liquidity as the key risk that makes banks uniquely vulnerable. This framework rationalizes a host of government interventions such as deposit insurance schemes and lenders of last resort, as well as necessary but potentially distortive regulations on bank risk taking, capital structure and liquidity exposure (e.g. Basel I, II and III).

In this paper, we show that banks face a second source of vulnerability, one stemming from borrowers rather than from demanders of liquidity. Using data from Italy leading up to and following the Euro crisis, we provide evidence that bank instability can stem from

¹The views expressed in this paper are those of the authors alone and do not necessarily represent those of the institutions with which they are affiliated. We are grateful to Massimiliano Affinito, Giorgio Albareto, Francesco Columba, Riccardo De Bonis, Emilia Bonaccorsi di Patti, Francesco Manaresi, Alfonso Rosolia and seminar participants at the Bank of Italy for helpful comments. We also thank Danilo Liberati for the helpful data collection. All errors are our own.

²Exceptions include the withdrawals of deposits from Northern Rock at the beginning of the financial crisis, and the more recent withdrawals of deposits from Greek banks during the negotiations with their creditors.

³See [Freixas, Laeven, and Peydro \[2015\]](#) and [Gorton and Metrick \[2012\]](#).

⁴See [Ivashina and Scharfstein \[2010\]](#), [Cornett et al. \[2011\]](#), and [Ippolito et al. \[2015\]](#).

credit risk. The link between credit risk and bank stability is well known: history tells us that waves of bank failures are often traceable to borrower losses and declines in the value of loans.⁵ However, we highlight a new channel through which credit risk enhances bank fragility. We show that borrowers selectively default against banks already weakened by past bad loans; borrowers thus seem to default because they observe other borrowers doing so. Our results emphasize the importance of legal enforcement in mitigating this problem, as the magnitude of these ‘borrower runs’ increases in areas of Italy where legal disputes take longer to resolve.⁶

Our data allow us to capture a firm’s decision to delay repayments of term loans as well as draw-downs of lines of credit in excess of the maximum borrowing limit at the level of the bank-borrower. Obviously, there can be multiple causes for a delay in loan repayments, ranging from firm financial distress to strategic considerations by firms about how such behavior may affect their ongoing or future relationship with lenders. With regard to the latter, a firm will be trading off the short-term gain of keeping control of financial resources (i.e. by not paying now), against the potential future loss of impairing their relationship with the current lender(s) or with potential future lender(s). The balance of this tradeoff may depend on the financial health of the lender, on the bargaining power of the borrower, and on the institutional environment that affects the ex post ability to recover collateral or otherwise force repayment through the judicial process. Everything else equal, one would expect a firm to be more likely to delay re-payment to weaker banks because the expected value of the continuation of the relationship is smaller. Firms with greater bargaining power - which we proxy by firm size - also ought to be more willing to default when lenders are weak, either because lenders will be reluctant to cut off a large customer or because large firms have better ability to switch lenders. Finally, firms will be more willing to delay loan

⁵The principles for appropriate management of credit risk are also a long-lasting topic of debate for regulators (e.g Basel I, II, III).

⁶In fact, reform of the Italian legal system has been a focus of recent efforts to help stimulate better economic performance. The Wall Street Journal reports that, “The snail’s pace of Italy’s courts throws sand into the wheels of the economy in myriad ways. Banks struggle to resolve bad loans because bringing deadbeat debtors to court takes by far the longest in Europe.” [[Zempano, 2014](#)]

repayment the harder it is for lenders to recover their interests through the courts.

Our evidence supports these predictions. We exploit a unique data set, the Italian Credit Register, that contains detailed information on all bank loans above 30,000 Euros given to firms. The data include information on repayment delays and the degree of impairment of loans, including those that fall short of being formally classified as “bad” by the bank. The solvency of Italian firms and the quality of loans has been strongly affected by the double dip recession following the global financial crisis of 2007-08 and the sovereign debt crisis of 2010-11.⁷

We match these data to individual balance sheets of banks reported to the Bank of Italy, which is in charge of financial supervision, as well as with borrower balance-sheet data collected by the Balance Sheet Register (these data have been provided by lenders for information-sharing purposes since 1983). The data can also be matched to measures of local judicial (in)efficiency in recovering the collateralized assets estimated by an index based on Italian Ministry of Justice data.⁸ While civil law and procedures are formally the same across the national territory in Italy, the real-world effectiveness of the court system varies widely, depending upon local jurisdictional court proceedings (Carmignani and Giacomelli, 2009; Giacomelli and Menon, 2013). We exploit this regional and sub-regional variation to test for the importance of legal enforcement on default behavior.

As in other studies, we exploit the fact that many Italian firms borrow from multiple banks. This feature allows us to introduce firm-specific, time-varying effects to fully absorb firm-level fundamentals that may determine the decision to delay loan repayment. Our identification thus comes solely from variation in bank characteristics, characteristics of the bank-firm relationship, and, importantly, on the efficiency of the court system. In other words, we test how the *same firm* behaves with respect to *different banks*, depending upon the strength of the bank’s balance sheet, the local judicial environment, and the nature of

⁷In seven years, manufacturing firms lost 17% of its productive capacity and net job destruction reached almost one million.

⁸The data are downloadable from the web page of the Italian Ministry of Justice. See <https://reportistica.dgstat.giustizia.it/>

the past bank-firm relationship.

The results suggest that bank balance sheet strength - particularly past bad loans - play an important role in determining the probability of a delay in loan repayment. In our basic specification, the stock of past bad loans increases the probability of borrower default. The result implies that, on average, banks with weaker balance sheets due to past (and non-collectable) bad loans experience more future defaults (in the form of temporary delays in repayment, many of which ultimately become permanently impaired). That is, we observe borrowers running on weak banks. The results hold when we allow the effect to differ according to firm size: in this case the (absolute) value of the coefficient increases in firm size, suggesting that larger firms, presumably the ones with greater bargaining power, tend to be those most likely to delay payment.

When we allow the degree of local judicial efficiency to interact with bank health (its direct effect is absorbed by the fixed effects), we find that the impact of bad loans becomes significantly larger where the courts are less efficient. This makes sense because a lower probability of recovery of principal interest through weak courts reduces the cost to borrowers of delaying repayments. In fact, we find *no effect* of past bad loans on current default in provinces where legal enforcement is strong. Thus, our results suggest that ‘borrower runs’ only occur when two conditions hold simultaneously: first, the lender itself is weakened from past losses and thus less able to commit to extending future credit; second, the lender’s ability to enforce contracts ex post is also weak due to poor legal enforcement.

In our last set of tests, we stratify firms by risk to test whether or not the behavior we document truly reflects strategic default. Are distressed borrowers merely selecting which banks to pay by allocating a fixed but limited cash-flow budget across lenders? Or, are borrowers paying less than they otherwise would because lenders are weak? In fact, we show that even the safest firms exhibit this behavior. Even firms that could pay - those with high credit quality - sometimes choose not to pay because of the confluence of weak banks and weak legal enforcement. This suggests a strong policy implication: improving banks’ ex post

ability to enforce contracts in court removes the possibility of a potential bad equilibrium in which the aggregate level of default is higher than would otherwise occur due to firms defaulting strategically.

The structure of the paper is as follows. In Section 2 we will review briefly the theoretical and empirical literature on borrower runs and discuss our contribution. In Section 3 we will describe the data we use in our empirical analysis and outline the growing importance for the Italian banking system of delayed loan repayment and bad loans generally. Section 4 contains a description of our identification strategy, econometric methods and empirical results. Section 5 concludes.

2 Literature Review

How does our contribution relate to the previous literature? Theoretical contributions suggest that borrower runs are possible. Using a global games framework, [Bond and Rai \[2009\]](#) prove the existence of multiple equilibria in loan repayment behavior.⁹ The crucial tradeoff for borrowers is represented by the present benefit of default vs. the expected loss of future access to credit conditional on default. The expected value of future access to credit depends upon the likelihood that other borrowers will repay their loans, as this affects banks' lending ability. This externality can lead to outcomes in which a borrower defaults because she expects others to do so. [Carrasco and Salgado \[2014\]](#) model borrower runs in the context of a costly state verification model.¹⁰ Equilibria with partial or complete default emerge in this case as the result of banks' limited resources in auditing borrowers, resulting in a reduction in the incentive for them to repay when defaults are expected to be high across many borrowers.

In both these theoretical frameworks, bank financial health mitigates the probability of a borrower run. But there is no empirical evidence to our knowledge that a borrower's

⁹On global games see, for instance, [Morris and Shin \[2001\]](#).

¹⁰See [Gale and Hellwig \[1985\]](#) and [Townsend \[1979\]](#).

decision to pay or not pay depends on the health or solvency of its bank, or on the default behavior of other borrowers. Our empirical work focuses primarily on indicators of bank health such as capitalization, asset composition, past bad loans, stability of funding, size, and profitability. Obviously the probability of default will depend critically on borrower fundamentals. To isolate the effect of bank fundamentals, we study firms that borrow from more than one lender, and we control for firm specific and time varying factors that affect a firm's repayment capacity (either actual or expected).

Beyond bank health, theory suggests that the occurrence of a borrower run will depend upon the institutional environment in which contracting takes place. In particular, the ability of creditors to recover the money lent will mitigate the incentive to delay repayment. Hence, we study the effects of efficiency of the local courts as a determinant of the decision to delay repayment.¹¹ Since at least [Porta et al. \[1998\]](#), financial economists have emphasized the importance of legal contract enforcement in shaping financial relationships. Many of the empirical studies emphasize how measures of enforcement affect ex ante contract terms such as ownership of debt and equity, the use of collateral and covenants in debt contracts, and the availability and price of credit (see [Roberts and Sufi \[2009\]](#) for a survey of the empirical literature). [Jappelli et al. \[2005\]](#) study Italy, as we do, and show that credit is more available and at lower prices in regions with better enforcement in court. A number of other studies use changes in bankruptcy laws, mechanisms, or regulations as exogenous shocks to enforcement costs to trace out the effects on credit supply. For example, [Scott and Smith \[1986\]](#) find that increased debtor protection following the 1978 bankruptcy reform in the US, and hence weaker enforcement, was followed by an increase in interest rates on loans to small borrowers. [Fedaseyeu \[2015\]](#) exploits changes in state regulation of debt collectors - an important enforcement mechanism outside bankruptcy - and finds that credit supply to high-risk borrowers increases with less restrictive regulation of the debt collection business. [Gropp et al. \[1997\]](#) show that reductions in enforcement from state-level variation in the

¹¹In a costly state verification model, for instance, court efficiency will be reflected in and captured by the monitoring/auditing cost parameter.

amount that individuals can shield in bankruptcy from their creditors via the homestead exemption both constrains credit supply and increases credit demand.

Our results help explain why credit supply has been shown to respond so strongly to the strength of legal enforcement. Not only does weak enforcement reduce ex post returns when loans default idiosyncratically, our results suggest also that losses can be contagious and lead to default probabilities that increase across a lender’s entire loan portfolio. Crucially, weak enforcement exacerbates this risk of borrower contagion. Thus, weak enforcement increases a bank’s systematic loan risk by raising the chance that borrowers default en masse once the likelihood of bank survival becomes sufficiently in doubt.¹²

A number of recent studies have found that credit supply by distressed banks was constrained in Italy during both the 2007-2008 global financial crisis as well as the more recent Euro crisis (e.g. [Albertazzi and Marchetti, 2010](#); [Bolton et al., 2013](#); and [Bofondi et al., 2013](#)). In addition, bank distress stemming from exposure to risky sovereign debt reduced credit supply and helped propagate the Euro crisis from distressed to non-distressed countries across the Euro system (e.g. [Popov and van Horen \[2013\]](#), [Marco \[2015\]](#)).¹³ Our study helps rationalize this behavior, as we show that past distress raises the risk of future default (even holding constant borrower fundamentals); hence, it makes sense that distressed banks would raise the price and restrict access to credit when extending new loans.

As far as we know there is no empirical evidence of borrower runs motivated by concern about bank loan losses or insolvency. [Ivashina and Scharfstein \[2010\]](#) do provide evidence that US firms drew more on their credit lines with banks that had a relationship with Lehman, but the mechanism they emphasize stems not from borrower unwillingness to re-pay their debt (our mechanism), but instead from borrower concern that liquidity would not be available in the future for the lending bank, leading to increased drawdowns on existing credit lines.

¹²While the bank itself may survive following a rash of defaults, particularly if governments are likely to step in and bail them out [[Strahan, 2013](#)], what matters to borrowers is the likelihood of continued credit access from the surviving entity, which may be threatened due to changes in bank ownership (the normal way in which failed banks get resolved) or management (which typically changes).

¹³On the real consequences of credit supply shocks in Italy see [Cingano et al. \[2013\]](#) and [Balduzzi et al. \[2014\]](#).

Similarly, [Ippolito et al. \[2015\]](#) show that Italian firms with multiple credit lines drew more from banks that had higher pre-crisis exposure to the interbank market and thereby were more liquidity constrained. Their paper emphasizes the traditional source of bank instability: liquidity risk. [Trautmann and Vlahu \[2013\]](#) provides experimental evidence that solvent borrowers may be more likely to default strategically when their bank's expected strength is low and when their own expected repayment capacity is low. Survey-based evidence of strategic behavior by US households in mortgage markets has been provided in [Guiso et al. \[2013a\]](#). They find that the propensity to default by households, even if solvent, is affected by both pecuniary and non-pecuniary factors such as views of fairness and morality. It is also related to the exposure to other people who have strategically defaulted.

We share with [Ippolito et al. \[2015\]](#) the focus on Italian firms and the use of the Italian Credit Register. Our emphasis, however is on a different form of runs, one that stems from the credit-risk side of the business - delayed loan repayment - and that is motivated by concern about a bank's viability and ability to extend credit itself in the medium term, as opposed to having short term funding issues. Moreover, our contribution provides evidence on the key role of the courts as a determinant of the likelihood of borrower runs, in addition to firm size and the nature of the previous bank-firm relationship. The inefficiency of the court system in Italy is a very important policy issue affecting Italy's economic performance in many dimensions.¹⁴

¹⁴“The complex regulatory system, the relative inefficiency of public procedures and government action, the slowness of the justice system [...] all hinder the reallocation of productive resources to the most efficient firms, which is one of the main mechanisms of productivity growth. [...]The large stock of non-performing loans also reflects the very long and variable duration of insolvency and credit recovery procedures, due in turn to the country's cumbersome civil justice system. These widespread inefficiencies depress potential buyers' valuations of impaired assets and discourage their sale on the market” (Ignazio Visco, The Governor's Concluding Remarks, Ordinary Meeting of Shareholders, 121th Financial Year; Rome, 26th May 2015; https://www.bancaditalia.it/pubblicazioni/interventi-governatore/integov2015/en_cf_2014.pdf?language_id=1).

3 Data Description

To estimate our model we need information about the (ex post) performance of bank loans extended to non-financial corporations, the financial health of their lenders (banks), the efficiency of the judicial system, and characteristics of borrowers as well as the type of lending relationship they have with their banks. Our dataset thus combines four sources of information existing in Italy: (i) the Balance Sheet Register; (ii) the Credit Register; (iii) measures on the functioning of the judicial system estimated from data provided by the Ministry of Justice; and, (iv) the Bank of Italy’s Supervisory Reports.

The Balance Sheet Register provides our sample of non-financial firms. It consists of around 32,000 industrial firms, 99% of which are unlisted. The Register accounts for more than 70% of industrial sector value added over the fiscal years 2008-13. The Balance Sheet Register is a proprietary database set up and managed by Cerved SPA, using data deposited by firms at the local Chambers of Commerce, as required by Italian law.¹⁵ Data from the Balance Sheet Register have been used extensively since 1983 by both lenders to assess firm soundness as well as by scholars to investigate various research questions.

The Credit Register, an archive maintained by the Bank of Italy, provides lender-borrower level data on characteristics of loans extended by banks operating in Italy. The data include information on loan type (credit lines, term loans), size, maturity, the pledging of real collateral, personal guarantees, accounts receivable, and ex post performance. Loans are reported when tranches exceed Euro 30,000 by the entire population of credit institutions. Hence we capture all but the very smallest firms borrowing from banks.

We use data from the Ministry of Justice to build a measure of enforcement for creditors based on the length of legal proceedings across Italy. Specifically, we use court-level data on the mean time to resolve matters regarding the execution of property. Following [Carmignani and Giacomelli \[2009\]](#) and [Giacomelli and Menon \[2013\]](#), we apply the formula adopted by the Italian Ministry of Justice and the Italian National Institute of Statistics (Istat) to

¹⁵Cerved is a member of the European Committee of Central Balance-Sheet Data Offices.

calculate the court-level indicators on the length of proceedings in 2007. The length of court proceedings is an inverse measure of efficiency (or a measure of inefficiency). We apply the following formula to the “flow” data disseminated by the Ministry of Justice:

$$D_t = \frac{P_t + P_{t+1}}{E_t + F_t}$$

where D_t is time to resolve matters regarding the execution property in years, P_t are pending cases at the beginning of 2007, F_t are new cases filed during 2007 and E_t are cases ending with a judicial decisions or withdrawn by the parties during 2007. We are careful to measure judicial efficiency before the onset of the banking losses that began in the wake of the Euro crisis (and before the beginning of our sample in 2008). Measured this way, we avoid reverse causality whereby a high level of distressed loans, by clogging up the courts, leads to an increase in the measure of judicial inefficiency.

In assigning each loan contract to a judicial jurisdiction, we use the judicial court located where the bank owning the branch has its legal residence. This choice is motivated by the fact that, in loan contracts, banks usually indicate the judicial court where the bank has its legal residence as the one that will be in charge in case of legal disputes with the borrowing firm. Ex post enforcement, however, requires several steps. First, lenders need an injunction from the court typically located in the province of its head office. Having gotten an injunction, to take possession of collateral the lender then must adjudicate before the court in the location of the collateral, which is likely, but not certain, to coincide with the firm’s location. The latter, in turn, may or may not coincide with the legal location of the bank. Thus, legal enforcement in two provinces may matter. Since the process always begins in the bank’s province, we report most of our models using legal enforcement measured in the province of lender’s head office. The time to get an injunction or to recover the collateral are highly correlated and conclusions are, therefore, insensitive to this choice.¹⁶ We present

¹⁶The correlation between the variable on the length of the first part of the judicial process (“Processi di Cognizione Ordinaria”) and that for the proceedings of property executions is close to 0.7.

results using the latter measure, but we also report a robustness test in which we remove any ambiguity about legal efficiency by including only observations in which the lender and borrower reside in the same province.

Finally, we obtain bank balance sheet data from the Supervisory Reports collected by the Bank of Italy, which is in charge of banking supervision in Italy. We use aggregate data for banks belonging to banking groups or holdings, and individual data for stand-alone banks, as we want to avoid measurement errors in our bank quality indicators due to infra-group reallocations of resources.¹⁷

3.1 Some facts on loan quality, bank quality and judicial efficiency in Italy

The formal classification of problematic loans adopted by Italian banks is ample and includes four categories: (i) “Past due/overdrawn more than 90 days”, (ii) “substandard loans”, (iii) “restructured exposures” and (iv) “bad loans.” “Past due/overdrawn by more than 90 days” are exposures (other than those classified as bad loans, substandard or restructured) whose repayments have been delayed by the borrowers for more than 90 days on a continuous basis. “Substandard loans” are exposures to counterparties which face temporary difficulties expected to be overcome within a reasonable period of time. Specifically, this class includes two subsets of problematic loans: the first one includes loans which are “objectively” substandard, such as loans or credit lines which are past due or overdrawn; the second group includes loans classified by the lender as “substandard” according to a judgmental basis only, meaning without any formal loan repayment delays to the bank in question or overdrawing on existing credit lines. This judgment could also depend upon a delay in payments to *other* lenders. “Restructured loans” are exposures in which lenders, as a result of the deterioration of the borrower’s financial situation, agree to change the original conditions, giving rise to

¹⁷Data on branches of foreign banks operating in Italy have been discarded from the dataset, as aggregate data are not available for holdings which are headquartered outside Italy.

a loss for the creditor. Finally, the “bad loans” category includes exposures to insolvent counterparties (even if not legally ascertained), regardless of any loss estimate made by the bank and irrespective of any possible collateral or guarantee.¹⁸

Table 1a shows the relative importance of these four categories and how they have evolved over time during our sample. Loans were broadly performing well before the 2007-09 financial crisis: the share of performing loans exceeds 98% in 2006-2008. The quality of lending began to worsen in 2009 (96% performing), and then fell in each year through 2014, i.e. after the 2007-09 financial crisis and especially after the sovereign debt crisis, which was accompanied by a worsening of the real performance of the Italian economy.¹⁹

In Table 1b we report the transition matrix (looking ahead one year) for all the borrowers in Italy based on data on loan quality published by the Bank of Italy.²⁰ These data indicate that in the first part of the sampled period around half of loans past due or overdrawn become performing again. However, after the sovereign debt crisis many of them eventually end up in the bad-loan category. For example, as of 2009, 51% of late or overdrawn loans were performing one year later. In contrast, this probability falls to just 27% by the end of 2013. During the latter years, the typical scenario for a loan would be to move first from the late category to the substandard category (probability > 40%) and then to transition from

¹⁸As of September 2014, non-performing exposures are classified according to definitions established by the European Banking Authority. The new definitions, to be used for harmonized supervisory financial reporting across Europe, are basically in line with those that were in force in Italy before the break and that were used by banks to classify the quality of the loans we analyze in this paper.

¹⁹The large volume of bad loans also reflects constraints and rigidities that oblige Italian banks to keep impaired assets on their books much longer than banks in other main countries. Among others, fiscal reasons - write offs are not immediately deductible - as well as the length of bankruptcy procedures limit the incentives for banks to sell problematic loans and restrain the development of a large secondary market for these assets. On this accounts, in May 2015, the Italian Government has taken measures to make loan losses immediately tax deductible. Moreover, the Italian and European authorities are debating whether and how to create a company specialized in the purchase of bad loans (without costs for taxpayers).

²⁰Table 1b reports a transition matrix, which is based on the data published in the Bank of Italy’s Annual report. Data refer to the universe of banks and financial intermediaries operating in Italy and to the population of non-financial companies recorded in the Register (see Table A6.15, page 56, *Banche e società finanziarie: matrici di transizione tra classi di anomalia nel rimborso dei prestiti*, https://www.bancaditalia.it/pubblicazioni/relazione-annuale/2014/appendice_2014_completa.pdf). Transitions are obtained by comparing the classification of a single borrower, at the beginning and at the end of the observation periods, across the loan quality classes as they are defined in the methodological appendix to the table (see page 197).

substandard to the bad loans category (probability around 25%). As the transition matrix shows, once a loan goes bad, it stays bad (“bad loans” is effectively an absorbing state).

The key outcome variable of this study is intended to measure a borrower’s decision to delay repayment to its bank. As such, we construct *late payment* as an indicator that equals one if the firm has a loan with a bank classified as ‘past due/overdrawn’, or ‘objective (past due/overdrawn) substandard’, and equal to zero if the loan is ‘performing’. We focus on the initial phase of the process of the loan quality deterioration because we want to avoid measurement errors when we capture the firm’s decision to default: in particular we want to capture, as much as possible, a firm’s *decision* to delay its payments. Therefore, we discard the “judgmental” component of “substandard loans”, which are based on the subjective choice of the lender, and “restructured loans”, which depend upon a bargaining between the bank and the firm. We also discard in our dependent variable those loans classified as “bad loans”, which reflect a bank’s final determination that the loan will not be repaid.

Table 1a and Figure 1 show the development of *late payment* - our dependent variable - over time. The share of loans in default increases almost monotonically, starting in 2009. A similar development - even if the share of default is slightly lower - is observed when we exclude credit lines from the ratio and consider the aggregate, which includes term loans only.

The empirical model, spelled out in the next section explicitly, links borrower default to measures of bank characteristics, including a measure of bank losses associated with changes in the value of the sovereign bonds. See the Data Appendix for a description of the variables and their data sources.

Table 2 reports basic summary statistics on the characteristics of banks during our sample (2008-2013). Most variables are available at quarterly frequency. The profit variable is reported, however, only at a bi-annual frequency, so we present results with and without this variable. Our key measure of bank health - bad loans / total assets - varies substantially, reflecting both changes across time (as in Figure 1), as well as substantial variation in the

cross section. We also capture liquidity-risk exposure of banks in two ways, one from each side of the balance sheet. Italian lenders rely strongly on stable sources of funding, i.e. deposits from residents and bank bonds held by households, which account for around the 60% of their balance sheets. Stable funding also varies dramatically across the sample, with some banks having around 90% stable funds and others relying mainly on other sources of funds, such as, *inter alia*, short-term wholesale funds. For asset liquidity, we again observe substantial variation, with the share of assets in bonds and cash varying from 5% to almost half of the balance sheet. We also control for lender size. As in most countries, most of the 695 banks employed in this study are small, with a median asset size of 430 million Euro, but the largest banks have over 200 billion Euro in total assets.

Table 3 reports statistics on the borrowers. The median firm has about 50 employees and 14 million Euros in assets. Leverage varies from around 2% to around 60% of assets, with a median of about 30%. Firm age averages 25 years. Overall, our sample is dominated by privately held, small and medium-sized firms. That said, our main results discussed below absorb with a quarter-firm dummy the direct effects of constant and time-varying firm characteristics to focus on bank effects on default.

As far as the efficiency of the judiciary in protecting creditors, Table 4 shows that the estimated average duration of the property execution proceedings was more than three years, equal to 1,189 days in Italy in 2007. However, significant disparities are observable across Italy, with the duration ranging from under one year for the Court of Crema to close seven years for that of Cosenza. Figure 2 shows a marked contrast between the areas of the northern and the southern parts of Italy, with the latter characterized by a significant higher length of the judicial proceedings. That said, heterogeneity exists across court jurisdictions operating within these two broad areas. For example, the estimated length of the proceedings in the Judicial Courts of Ragusa and Brindisi - both localized in the South - are equal to 3,336 and 1,137 days, respectively.

4 Econometric Methods and Results

We estimate a linear probability model that links borrower payment delays to a set of bank effects, firm-time effects and measures of bank characteristics, as follows:

$$y_{i,b,t} = \sum_{k=1}^K \alpha_k x_{b,t-1} + \theta_{i,t} + \delta_b + \varepsilon_{i,b,t}$$

where i denotes firm, b denotes bank and t denotes time (quarterly or bi-annual frequency). The outcome $y_{i,b,t}$ (*late payment*) equals an indicator variable set to 1 if the firm has a loan repayment delay or overdrawn with the bank in the quarter and 0 if loans granted by the bank to the firm are performing in the quarter. Explanatory variables ($x_{b,t-1}$) are time-varying bank characteristics from the end of the previous period. We include the log of bank assets to capture bank size (*lntot*) and consider capitalization (*cap*), the amount of stable sources of funding (*stable*), liquid assets (*liquidity*) and ROE (*profits*) as bank-level covariates; to capture the strength of the (lending) relationship between the bank and the firm, we use the share of loans from bank b to firm i (*bkshare*).

Our main variable of interest is the ratio of past bad loans to total assets (*badloans*), a measure of bank health that captures the extent to which a bank has already experienced high levels of borrower default. We allow the effects of bad loans to vary according to the judicial efficiency of the local courts (measured by the log of the average length of property execution proceedings (*inefflaw*)), as well as by firm size (captured by indicators for small, medium-small, medium-large, and large firms by assets); we interact bad loans (as well as other bank co-variates) with each of these variables in some of our specifications. In our last set of tests, we report interactive models based on firm credit quality.

To absorb unobserved heterogeneity at the bank level, we control for bank fixed effects (δ_b). Moreover, our main variable of interest varies at the bank level over time, so we cluster standard errors at the bank level. The firm-time effects ($\theta_{i,t}$) control non-parametrically for all characteristic of borrowers that might lead to default across all lenders, such as lack

of investment opportunities or business fundamentals related to risk, poor cash flow or low profit realizations, as well as other hard-to-measure time-varying attributes that might be correlated with default. By absorbing these effects, we focus on a firm’s decision as to which of its banks to pay and which not to pay. Identification comes only from firms which pay some of their banks but not others (in a given quarter). Any borrower paying all of its banks on time, or failing to pay all of its banks, is taken out by the firm-time effect. Thus, we can interpret the α_k coefficients as measures of ‘selective’ default - the extent to which a firm chooses to default, in the sense of not repaying the loan plus interest when it is due, with respect to one bank vs. another.

Our study rests on the assumption that borrowers pay attention to the quality of their banks’ balance sheets, as it might influence lenders’ ability to extend credit in the future. This is a very plausible assumption because bank balance sheet information is easily available and widely disseminated, including the information on loan quality. Moreover, as the problem of bad loans on banks balance sheet mounted, the national and international press have been focusing on credit quality as the main factor determining bank fragility.²¹

4.1 Baseline result: Accumulated bad loans encourage firms to delay repayment (default)

Table 5 reports our baseline specification with no interactive effects. As said, our sample covers the period 2008Q4-2013Q4; bi-annual data are used in regressions which include *profits*. These regressions focus strictly on the total effect of bank variables on firm’s choice to delay loan repayment (i.e. to default). Columns (1)-(7) report the results for each bank characteristic one by one, and columns (8) and (9) report the multivariate models. Models with bank profits (columns (7) and (9)) have somewhat fewer than half of the observations because this variable is reported bi-annually, rather than quarterly.

We find strong evidence that bank weakness leads firms to increase their willingness

²¹See, for instance, [Pavesi \[2015\]](#) or [Legorano \[2013\]](#).

to default. Firms with more than one bank selectively default against the weaker one(s). Specifically, default is more likely at banks with high levels of past bad loans. These effects are large, both statistically and economically. For example, an increase in bad loans from the 25th to the 75th percentile (a change of about 0.05 - see Table 2) is associated with an increase in default of 0.5 percentage points ($= 0.05 \times 0.114$; see column (8)), which is large relative to the average default probability of about 3% (recall Table 1a). The effect is robust, entering the regressions with a similar magnitude irrespective of the specification or the sample (the sample drops by more than half when we include bank profit). The result suggests that extending credit can create bank instability, apart from the standard channel based on liquidity exposure: borrowers' tendency to default increases as they observe others doing so. This externality suggests the possibility of a bad equilibrium in which 'borrower runs' lead to bank distress and failure.

We also find some evidence, although less statistically robust, that banks with greater losses from sovereign exposure face higher levels of firms' default (columns (6) and (8)). In addition, firms are more likely to default as their share of borrowing from a bank increases; this effect may be rationalized by interpreting *delay* as a form of flexibility called for by distressed borrowers to "relationship" lenders or it might simply reflect the idea that firms facing financial constraints have more to gain (at least in the short term) by defaulting against banks to whom they owe more. Another possible explanation is that firms with large loans are, paradoxically, in a stronger bargaining position vis-à-vis the bank, because they are aware of the possible reluctance of banks to formally classify large loans as "bad". We find no evidence that bank size or bank profits affect default behavior. We also find no evidence that bank liquidity stress - either from a low share of assets in liquid investments or heavy reliance on wholesale fund (low stable funds) - affects default. This last non-result contrasts sharply with that of Ippolito et al. [2015], who show that firm drawdowns on credit lines increase at banks facing funding pressures around the Lehman bankruptcy. The difference in results is likely to reflect the different periods investigated by the two papers. Specifically, we

do not focus on the immediate aftermath of the Lehman bankruptcy, but consider a longer period which is characterized by massive injection of liquidity by the European Central Bank that strongly alleviated liquidity shortages and funding problems of European banks.

4.1.1 Results by firm size and bank share

Table 6 extends the baseline model by allowing the marginal effect of bank characteristics to vary by borrower size. We accomplish this by sorting borrowers into four equal-sized bins based on total assets and allowing the slope coefficients to differ for each group (the direct effect of the firm size-bin indicators, like all other firm characteristics, gets absorbed by the firm-time effects). These results accomplish two goals. First, they show that the main result - increased delayed-payment default at banks exposed to past bad loans - is robust across the firm-size distribution in most specifications. Second, the magnitude of this effect grows with firm size, and these differences are statistically significant at conventional levels in the specification including bank profits (see F-statistics in Table 6 that tests the equality of the bad loan coefficient across size classes). Thus, firms with greater bargaining power due to a better ability to switch lenders - large firms - seem more apt to take advantage by not paying their banks weakened by past bad loans.

Like Table 6, Table 7 extends the baseline model, this time by allowing the marginal effect of bank characteristics to vary with the firm's share of borrowing from the bank. Here, we test whether an increase in the importance of the bank to the firm - a plausible measure of the strength of the bank relationship - affects the firm's willingness to default selectively. We find no such evidence. The share of total borrowing from a given bank does not interact significantly with any measure of bank characteristic, including past bad loans.

4.2 Judicial efficiency and selective default

Table 8 reports the baseline model augmented with interactions of the bank characteristics with our measure of enforcement - the natural log of the average durations for property

execution proceedings (*inefflaw*) -, which varies widely across judicial courts (recall Figure 2).²²

These results show that bank weakness affects firm-level default choices most in areas with weak enforcement (columns (5), (8) and (9)). The positive interaction between bank health (bad loans) and weak enforcement also demonstrates that the default behavior reflects borrower rather than lender decisions. One alternative explanation for the main effect in Table 5 might be that weak lenders invoke their contractual rights to force early repayment more aggressively than less-distressed lenders. This would generate greater defaults at more distressed lenders, even for the same borrower. But this behavior would be more attractive for lenders operating where their ex post bargaining power, due to efficient court proceedings, is strong. We find, instead, that the behavior happens most where *borrower's* bargaining power is strong (in addition, we do not use default events in which loan's terms have been restructured; these cases would reflect negotiation between borrower and lender).

To understand magnitudes, Figure 3 plots the marginal effect of bad loans on default likelihood as a function of the level of enforcement, from the 5th to the 95th percentile of its distribution. The marginal effect of bad loans clearly increases in the length of time for property execution in court. At the mean, the marginal effect of bad loans is about 0.09 ($= -1.301 + 0.196 \times \ln(1189)$; see column (8)), close to what we find in the non-interactive regressions of Table 7. The effect implies that a one standard deviation increase in bad loans would increase defaults by about 0.5 percentage points. In contrast, where enforcement is poor - one standard deviation lower than average (e.g. Cosenza) - the effect roughly doubles. In courts with good enforcement (e.g. Crema), in contrast, the effect of past bad loans on defaults is small and not statistically significant (standard error bands surround zero). This variation emphasizes the importance of legal enforcement, as we only see evidence of firms selectively defaulting against weak banks where their ex post ability to enforce is weak. Thus, where enforcement is weak borrowers pay mainly to preserve access to future credit, much

²²The main effect of *inefflaw* is absorbed by the bank fixed effect since *inefflaw* is time-invariant and the jurisdiction is assigned on the basis of the legal residence of the bank.

as the incentive of sovereign governments to repay debt resides primarily in their concern about borrowing in future years [Shleifer, 2003].

Table 9 re-introduces the firm-size interaction effects, again by estimating slope coefficients separately across size bins. Since the model now has both a direct effect and an interactive effect, we estimate a pair of coefficients on each bank characteristic in each of the four firm-size bins (i.e., eight coefficients for each bank characteristic). These models suggest the following: 1) banks with more bad loans face a greater level of default, confirming the previous result; 2) this result is substantially stronger in regions with poor legal enforcement, again confirming Table 8; and, 3) this result is robust across borrower size categories. That said, the evidence in Table 6 - that the tendency to default selectively increases with borrower size - appears less compelling. We do find a stronger effect of bank exposure to bad loans on default for the largest vs. the second-to-largest group of firms, but the coefficient bands for the parameters of these two groups are overlapping and if we test the joint hypothesis across all four size bins, we fail to reject the null that the two pairs of coefficients are equal.

4.3 Strategic v. Selective Default

We have consistently used the term ‘selective’ default to describe our results. We do so because our identification strategy exploits only variation from firms that select to default against one or more of its lenders while continuing to pay others. One issue that this approach does not address is whether some of these selective defaults are really strategic. That is, do some borrowers pay less than they otherwise would because one or more of their lenders is distressed? Or, do borrowers (many of whom are themselves distressed) pay as much as they can, regardless of bank health, but actively select which bank to pay and which not to pay? Selective but not strategic behavior, while interesting, would imply that the overall amount of total default would not be affected by bank weakness. In fact, one might even argue that selective default could be helpful by weeding out weak banks faster than might otherwise occur. Quantifying the amount of strategic behavior is difficult in our setting, but

one approach we can offer is to estimate our model separately by borrower credit worthiness.

Table 10 reports such tests, with a structure parallel to that of Table 9. Rather than sorting by size, here we sort by borrower risk. In particular, we separate firms into three risk bins based on the z-score, which summarizes credit quality.²³ Firms with z-scores less than or equal to three are defined as safe, those with scores between four and six as vulnerable, and those with scores equal to and above seven as risky. The results suggest, first, that the effect of bank distress on default is robust across all three firm types; in each case we see that the bad loans ratio affects default most in areas with weak legal enforcement. Magnitudes increase across the three risk bins, but this makes sense because the mean level of default rises with the z-score and thus leads to larger coefficients. In each bin, the marginal effect of badloans on default is close to zero in areas with high levels of judicial efficiency and then increases, becoming positive and significant, as judicial efficiency worsens. This is illustrated graphically in Figure 4, which reports the marginal effect of badloans on default for each firm type across the distribution of judicial efficiency (*inefflaw*). Even for the safest category of firms, we find evidence that default increases with bank distress in areas of poor legal enforcement. As shown in Figure 5, the marginal effect of badloans on default becomes positive and statistically significant for most of the distribution of legal inefficiency above its average. This suggests that truly strategic default sometimes occurs. Defaults are higher when lenders are weak (due to high bad loans) and legal enforcement is poor, even for the lowest risk borrowers. Low risk borrowers have the capacity to pay but sometimes choose not to pay, indicating the presence of strategic default and therefore less overall debt repayment due to bank weakness and poor enforcement.

²³The *score* variable measures the probability of a firm defaulting on the basis of an adaptation to Italy of Altman [1968]’s approach, developed by Cerved SPA and regularly used by Italian banks to assess a firm’s riskiness. The Score index ranges from one for firms least likely to default to nine for firms most likely to default.

4.4 Robustness Tests

Table 11 reports five robustness tests of our main model with legal efficiency (i.e. the models of Table 8). First, we report the model using term loans only. Second, we report the model after discarding all data beyond the first quarter in which a loan becomes late (or overdrawn). Third, we control for four dimensions of loan terms. Fourth, we reduce our sample and include only observations in which the bank and the lender reside in the same court jurisdiction. Fifth, we replace bank fixed effects with bank-firm effects. And sixth, we allow for the effect of accumulated bad loans to differ not only according to the efficiency of the court, but also based on the macro region a firm resides in.²⁴

4.4.1 Term Loans Only

By excluding credit lines from our dataset, we can help ensure that the behavior reflects the borrower's intent not to repay the loan. Credit line data combine variation generated both by the borrower's delays in re-payment of existing balances, and variation stemming from the borrower's demand for liquidity. Specifically, delayed re-payment on an existing credit line will mechanically lead to an increase in the drawn balance, just as an active increase by the borrower in the amount drawn. As long as the drawn balance remains below the maximum amount of the line, we have no way to determine what motivates the borrower. A second problem with credit lines is that the bank's choice to cut credit limits could also make default more likely. Thus, data on credit lines may confound our interpretation. No such problems exist with respect to term loans, since the balance of the loan is fixed throughout the life of the loan. Thus, this robustness test allows us to sharpen the distinction between bank vulnerability stemming from liquidity exposure (the traditional concern) and vulnerability stemming from credit-risk exposure (our focus).

Column (1) of Table 11 reports these results. Focusing only on term loans confirms

²⁴Since the results when bank profits are included are very similar, we present only the results for the larger quarterly sample without this control variable.

our main message: borrowers selectively default against weak banks in regions with poor enforcement. Term loans have no liquidity component, so this result can only reflect credit risk and not liquidity. The coefficient magnitudes are somewhat smaller than those observed when we model overall default, but this reflects the lower level of default of term loans vs. lines.

4.4.2 First Delay

The next set of regressions (column (2)) report the main results with just the first instance in which a loan becomes late on a payment (or overdrawn). This test alleviates the concern that persistence in the error term leads to a bias in estimating the effects of past bad loans on delayed repayment. The problem is twofold. First, once borrowers become late on a loan, that lateness becomes persistent; late borrowers tend to stay late for many consecutive quarters. Second, loans that are late (or overdrawn) often transition to the bad-loan account. This pattern is evident in the transition matrix described earlier (recall Table 1b). Persistence in the error term after loans become late would therefore induce a contemporaneous correlation between the error and the level of bad loans for observations after the first instance of default. To remove this source of bias, we simply drop all observations after a loan first enters the state of late payment. The basic pattern of the regression results remains similar, with even stronger statistical significance. The magnitudes fall, but this is as expected because by dropping all instances of late payments after the first one, we reduce the mean level of the dependent variable by more than 50%.

4.4.3 Control for Loan Terms

As we have emphasized, our model fully absorbs all firm-level fundamentals by capturing firm-quarter fixed effects. However, loan terms - interest rates, collateral, and maturity - are not captured this way, since these may vary systematically across a firm's banking relationships. We therefore control for the loan interest rate, the share of loans with maturity

less than one year, the average ratio of collateral in accounts receivable to loan size, and the average ratio of real-estate collateral to loan size. Each of these variables reflects variation at the firm-lender-quarter level, so coefficients remain identified even with the firm-quarter fixed effects. In some cases loan terms are not available, so the sample falls in these models.²⁵

We find in column (3) that higher interest rates are associated with more default, which seems sensible given that the firm can save more cash resources by delaying payment on more expensive loans. We find that shorter maturity loans are more likely to default. And we find some evidence that collateral mitigates default risk (at least for accounts receivable; real estate collateral does not enter the model robustly). But what is most salient for us: adding these variables does little to our results of interest. In fact, we find somewhat stronger results, although this in part may reflect differences in the sample.

4.4.4 Borrower and Lender in Same Court Jurisdiction

Next, we include only instances in which lender and borrower are located in the same court jurisdiction. This alternative sample, which is much smaller than our main sample, accounts for possible measurement error in mapping legal enforcement into the data. As noted above, ex post enforcement requires lenders first to receive an injunction from the court jurisdiction of its head office and, to repossess collateral (or other borrower's assets), they also need to adjudicate in the court located near the collateral. Thus, legal enforcement in both court jurisdictionss may matter. By focusing on cases in which the two overlap, we can test whether potential mis-classification could generate (or bias) our findings.²⁶

These results (column (4) of Table 11) again support the idea that lender weakness (bad loans) raises default in areas with weak enforcement. If anything, these results are stronger

²⁵Specifically, data on interest rates on loans are available from the Bank of Italy's Loan Interest Rate Survey, which collects data from around 200 banks accounting for over 90% of total outstanding loans.

²⁶The large drop in the sample occurs because the majority of loans are extended by the largest banks with branches located across the whole Italy. So, even though borrowers are usually located near a branch of their lender, they often are not located near the lender's head office. Thus, this sample filters out most loans extended by the largest banks and suggests robustness with respect to lender size as well as legal efficiency measures.

than those reported in our main model, meaning that the effect of bad loans on default exhibits greater sensitivity to legal efficiency in this smaller sample.

4.4.5 Controlling for Possible Endogeneity of Borrower-Lender Matching

With the results of column (5), we rule out the possibility that endogenous matching between firms and banks could explain our results. For example, one concern might be that firms sometimes choose a lender located in an area with poor legal enforcement with the intention of defaulting. We do this by simply incorporating a unique fixed effect for each bank-firm pair. These effects will ‘control’ non-parametrically for all aspects driving the firm’s choice of its lender.

The results provide little evidence that endogenous sorting affects firm default behavior. We continue to find that firms default more when their lender is distressed. At the mean level of legal enforcement, the marginal effect of bad loans on default equals 0.08 ($= -1.077 + 0.163 \times \ln(1189)$), very close to what we observe in our model with just bank effects (as in Table 8).

4.4.6 Allowing for Differences Across Macro Regions

One may wonder whether the differences in the importance of bank health across court jurisdictions proxies for more complex differences between southern and northern regions. As we have seen, we have meaningful variation across both regions, but judicial efficiency is clearly higher (*inefflaw* is lower) on average in the north of Italy. Moreover, many authors have pointed to cultural differences across the two areas. These include differences in social capital, trust, and respect for others outside the family.²⁷ Such difference could plausibly affect a firm’s willingness to default selectively.

To test whether these alternative sources of variation explain our results, we incorporate additional regressors interacting the bank characteristics with an indicator set to one for

²⁷See for instance, [Putnam et al. \[1994\]](#), [Guiso et al. \[2004\]](#) and [Guiso et al. \[2013b\]](#).

the southern regions (and major islands). Our focus is on the interaction between *badloans* and *inefflaw*×*badloans* with this regional indicator. This specification allows the effect of *badloans* on default to vary regionally as well as across judicial areas. The coefficients on these additional variables capture the difference between the south (and island regions) relative to the center and north of Italy. Column (6) shows, however, that the regional interactions are not statistically significant, either individually or jointly. For example, the F-test for the significance of two additional interactions with *badloans* and *inefflaw*×*badloans* has a p-value of 0.442. So, we conclude that judicial inefficiency is the main factor determining the marginal effect of accumulated bad loans on the decision to delay payments.

5 Conclusions

This paper provides the first empirical evidence that banks can be vulnerable to run-like behavior when borrowers choose to delay payment in response to evidence of their bank's distress from past bad loans. These results are strong, both statistically and economically, at those Italian banks which operated in areas with weak legal enforcement. Most of the finance and economics literature, as well as the policy and regulatory apparatus, have viewed the roots of bank vulnerability as stemming from exposure to liquidity risk. Although exposure to credit risk is a well-known source of bank losses, we find a *new channel* through which credit risk might impair bank stability: delay in payments motivated by bank weakness. We even demonstrate that where enforcement is weak, even the safest borrowers delay loan repayment to weak banks. Our results help explain why the law and finance literature has found weak enforcement of creditor rights to be so detrimental to well functioning debt markets [[Porta et al., 1998](#)].

Fragility from liquidity exposure has been addressed with mechanisms like deposit insurance, liquidity requirements (called for by the Basel III reform package) and lender of last resort facilities operated by central banks. It seems likely that better enforcement, such as

improving the speed and certainty with which creditors can take possession of borrower's net worth would reduce fragility stemming from credit risks and limit, in turn, the use of those lenders of last resort facilities that might carry costs by encouraging banks to increase leverage, issue too much short-term debt, and take excessive risk.

Our paper also contributes to the debate on the role of information, market discipline and bank stability: while access to timely and reliable information enables investors to assess risks inherent to financial assets and to allocate capital efficiently, full transparency might sometimes have detrimental effects if it leads to overreaction by market participants. Our results suggest that in bad times, dissemination of information on lender fragility might push borrowers to delay loan repayments against weak banks, making their condition even worse.

References

- Ugo Albertazzi and Domenico J. Marchetti. Credit Supply, Flight to Quality and Evergreening: an Analysis of Bank-Firm Relationships after Lehman. Temi di Discussione (Economic Working Papers) 756, Bank of Italy, Economic Research and International Relations Area, April 2010.
- Edward I. Altman. Financial Ratios, Discriminant Analysis and the Prediction Of Corporate Bankruptcy. *Journal of Finance*, 23(4):589–609, September 1968.
- Pierluigi Balduzzi, Emanuele Brancati, and Fabio Schiantarelli. Financial Markets, Banks' Cost of Funding, and Firms' Decisions: Lessons from Two Crises. Boston College Working Papers in Economics 824, Boston College Department of Economics, 2014.
- Marcello Bofondi, Luisa Carpinelli, and Enrico Sette. Credit Supply During a Sovereign Debt Crisis. Temi di Discussione (Economic Working Papers) 909, Bank of Italy, Economic Research and International Relations Area, April 2013.
- Patrick Bolton, Xavier Freixas, Leonardo Gambacorta, and Paolo Emilio Mistrulli. Relationship and Transaction Lending in a Crisis. Temi di Discussione (Economic Working Papers) 917, Bank of Italy, Economic Research and International Relations Area, July 2013.
- Philip Bond and Ashok S. Rai. Borrower Run. *Journal of International Economics*, 89: 185–191, 2009.
- Charles Calomiris. Banking Crises and the Rules of the Game. NBER Working Papers 15403, National Bureau of Economic Research, Inc, October 2009.
- Amanda Carmignani and Silvia Giacomelli. Italian Civil Justice: Regional Disparities. Questioni di Economia e Finanza (Occasional Papers) 40, Bank of Italy, Economic Research and International Relations Area, February 2009.

- Vinicius Carrasco and Pablo Salgado. Coordinated Strategic Defaults and Financial Fragility in a Costly State Verification Model. *Journal of Financial Intermediation*, 23:129–139, 2014.
- Federico Cingano, Francesco Manaresi, and Enrico Sette. Does Credit Crunch Investments Down? New Evidence on the Real Effects of the Bank-Lending Channel. Mo.Fi.R. Working Papers 91, Money and Finance Research Group (Mo.Fi.R.) - Univ. Politecnica Marche - Dept. Economic and Social Sciences, December 2013.
- Marcia Millon Cornett, Jamie John McNutt, Philip E. Strahan, and Hassan Tehranian. Liquidity Risk Management and Credit Supply in the Financial Crisis. *Journal of Financial Economics*, 101(2):297–312, August 2011.
- Emilia Bonaccorsi di Patti and Enrico Sette. Bank Balance Sheets and the Transmission of Financial Shocks to Borrowers: Evidence from the 2007-2008 Crisis. Temi di Discussione (Economic Working Papers) 848, Bank of Italy, Economic Research and International Relations Area, January 2012.
- D. W. Diamond and P. H. Dybvig. Bank Runs, Deposit Insurance, and Liquidity. *Journal of Political Economy*, 91:401–419, 1983.
- Viktar Fedaseyev. Debt Collection Agencies and the Supply of Consumer Credit. Working Papers 15-23, Federal Reserve Bank of Philadelphia, June 2015.
- X. Freixas, L. Laeven, and J.L. Peydro. *Systemic risk, crises and macroprudential policy*. MIT Press, 2015.
- Douglas Gale and Martin Hellwig. Incentive-Compatible Debt Contracts: The One-Period Problem. *Review of Economic Studies*, 52(4):647–663, 1985.
- Silvia Giacomelli and Carlo Menon. Firm Size and Judicial Efficiency: Evidence from the

- Neighbour's Court. Temi di Discussione (Economic Working Papers) 898, Bank of Italy, Economic Research and International Relations Area, January 2013.
- Gary Gorton and Andrew Metrick. Securitized Banking and the Run on Repo. *Journal of Financial Economics*, 104(3):425–451, 2012.
- Reint Gropp, John Karl Scholz, and Michelle J White. Personal Bankruptcy and Credit Supply and Demand. *The Quarterly Journal of Economics*, 112(1):217–51, February 1997.
- Luigi Guiso, Paola Sapienza, and Luigi Zingales. The Role of Social Capital in Financial Development. *American Economic Review*, 94(3):526–556, June 2004.
- Luigi Guiso, Paola Sapienza, and Luigi Zingales. The Determinants of Attitudes toward Strategic Default on Mortgages. *Journal of Finance*, 68(4):1473–1515, August 2013a.
- Luigi Guiso, Paola Sapienza, and Luigi Zingales. Long-term Persistence. *Journal of the European Economic Association (forthcoming)*, July 2013b.
- Filippo Ippolito, Jose Luis Peydro, Andrea Paolo, and Enrico Sette. Double Bank Runs and Liquidity Risk Management. Bank of Italy, February 2015.
- Victoria Ivashina and David Scharfstein. Bank lending during the financial crisis of 2008. *Journal of Financial Economics*, 97(3):319–338, 2010.
- Tullio Jappelli, Marco Pagano, and Magda Bianco. Courts and Banks: Effects of Judicial Enforcement on Credit Markets. *Journal of Money, Credit and Banking*, 37:223–244, 2005.
- Giovanni Legorano. Loans Sour for Italy's Banks. *The Wall Street Journal*, November 2013. URL <http://www.wsj.com/articles/SB10001424052702304243904579195930128307274>.
- Filippo De Marco. Bank Lending and the Sovereign Debt Crisis. Bocconi University, June 2015.

- Stephen Morris and Hyun Song Shin. Rethinking Multiple Equilibria in Macroeconomic Modeling. In *NBER Macroeconomics Annual 2000, Volume 15*, NBER Chapters, pages 139–182. National Bureau of Economic Research, Inc, 2001.
- Fabio Pavesi. Quelle 33 banche con crediti malati sopra il 20%. *Il Sole 24 Ore*, February 2015. URL http://www.ilsole24ore.com/art/notizie/2015-02-14/quei-33-istituti-crediti-malati-sopra-20per cento-081320.shtml?grafici&refresh_ce=1.
- Alexander Popov and Neeltje van Horen. The Impact of Sovereign Debt Exposure on Bank Lending: Evidence from the European Debt Crisis. DNB Working Papers 382, Netherlands Central Bank, Research Department, June 2013.
- Rafael La Porta, Florencio Lopez de Silanes, Andrei Shleifer, and Robert W. Vishny. Law and Finance. *Journal of Political Economy*, 106(6):1113–1155, December 1998.
- Robert D. Putnam, Robert Leonardi, and Raffaella Y. Nanetti. *Making Democracy Work: Civic Traditions in Modern Italy*. Princeton University Press, Princeton, NJ, 1994.
- Michael R. Roberts and Amir Sufi. Financial Contracting: A Survey of Empirical Research and Future Directions. *Annual Review of Financial Economics*, 1(1):207–226, November 2009.
- Jonathan A. Scott and Terrence Smith. The Effect of the Bankruptcy Reform Act of 1978 on Small Business Loan Prices. *Journal of Financial Economics*, 16:119–140, 1986.
- Andrei Shleifer. Will the Sovereign Debt Market Survive? *American Economic Review*, 93(2):85–90, May 2003.
- Philip E. Strahan. Too Big to Fail: Causes, Consequences and Policy Responses. *Annual Review of Financial Economics*, 5:43–61, 2013.

R. M. Townsend. Optimal Contracts and Competitive Markets with Costly State Verification. *Journal of Economic Theory*, 21(2):265–293, 1979.

Stefan T. Trautmann and Razvan Vlahu. Strategic Loan Defaults and Coordination: An Experimental Analysis. *Journal of Banking and Finance*, 37(3):747–760, 2013.

Ignazio Visco. Concluding remarks by Mr. Ignazio Visco, Governor of the Bank of Italy, at the Ordinary Meeting of Shareholders 2014, May 2015. URL https://www.bancaditalia.it/pubblicazioni/interventi-governatore/integov2015/en_cf_2014.pdf?language_id=1.

Giada Zempino. Renzi Takes Aim at Italy’s Slow Courts. *Wall Street Journal*, 2014.

Data appendix

Loan quality and lending relationship - Source: Credit Register, Bank of Italy

late payment (0,1): bank, firm, quarter-level, =1 if the firm has a past due/overdrawn with the bank in the quarter; = 0 if loans granted by the bank to the firm are performing in the quarter;

bkshare: bank, firm, quarter-level, firm's share of borrowing from the bank in the quarter;

past due/overdrawn: exposures (other than those classified as bad loans, substandard or restructured) whose repayments have been delayed by the borrowers for more than 90 days on a continuous basis;

substandard: exposures to counterparties which face temporary difficulties expected to be overcome within a reasonable period of time;

objective substandard: past due/overdrawn classified as "substandard";

restructured: exposures in which lenders, as a result of the deterioration of the borrower's financial situation, agree to change the original conditions, giving rise to a loss for the creditor;

bad loans: exposures to insolvent counterparties (even if not legally ascertained), regardless of any loss estimate made by the bank and irrespective of any possible collateral or guarantee;

Bank characteristics - Source: Supervisory Reports, Bank of Italy

total assets, bank, quarter-level; eur millions;

lntot: bank, quarter-level; total assets, eur millions (log of);

badloans: bank, quarter-level, bad loans/total assets, ratio;

profits: bank-level, by-annual, return on equity, ratio;

liquidity: bank, quarter-level, (cash and gov. bonds) /total assets, ratio;

capital: bank, quarter-level equity/total assets, ratio;

stable funding: bank, quarter-level, deposits from residents and bank bonds with households/total assets, ratio;

govshock: bank, quarter-level, bank losses from sovereign bonds holdings; source: Author's estimates based on data from Supervisory Reports, Bank of Italy. See the upcoming description for details

An index of bank losses from sovereign bonds holdings (*govbshock*) - Source: Author's estimates based on data from Supervisory Reports, Bank of Italy

We follow De Marco (2015) to compute the change in the value sovereign holdings (*govbshock*) using the change in the yield ($\Delta yield$) for each type of bond (based on maturity and country), multiplied by the product of the bond's duration times its share of the bank's total assets (*govbondshare*). We limit ourselves to bonds issued by the Italian government because they represent the vast majority of holdings of sovereign bonds. *Govshock* is defines as

$$govbshock_{b,t} = \sum_m duration_{m,t} \times \Delta yield_{m,t} \times govbondshare_{m,t-1},$$

where m denotes the original bond maturity. For a zero coupon bond the formula can be written as:

$$duration_{m,t} = \frac{2m}{1 + yield_{m,t}}.$$

For a par bond, the formula simplifies to

$$duration_{m,t} = \frac{1}{yield_{m,t}} \left[1 - \frac{1}{(1 + yield_{m,t})^{2m}} \right].$$

We apply the first formula when we know that the sovereign bonds are discount bonds and an average of the two formulae when we have no such information.

Efficiency of justices - Source: Authors' estimates from data disseminated by the Italian Ministry of Justice

inefflaw: court jurisdiction-level, Length of Property execution proceedings in days (log of);

Firm characteristics - Source: Balance sheet register

employees: firm, year-level;

firm assets: firm, year-level;

debt/assets: firm, year-level;

age: firm, year-level;

Table 1: Summary Statistics

The table shows statistics on problematic loans for a sample of around 32,000 industrial firms based in Italy. The description of variables and their data sources are given in the Data Appendix.

(a) Loan Quality in Italy (Sampled Firms)

	2006	2007	2008	2009	2010	2011	2012	2013	2014
Performing	0.986	0.987	0.982	0.956	0.936	0.922	0.909	0.880	0.853
Bad Loans	0.000	0.000	0.002	0.008	0.017	0.025	0.035	0.052	0.071
Restructured	0.002	0.002	0.002	0.007	0.014	0.017	0.018	0.016	0.019
Past Due/Overdrawn	0.009	0.008	0.010	0.013	0.012	0.015	0.011	0.011	0.008
Substandard	0.003	0.002	0.005	0.016	0.021	0.021	0.027	0.040	0.049
<i>o.w.:objective substd.</i>	<i>0.001</i>	<i>0.001</i>	<i>0.001</i>	<i>0.008</i>	<i>0.011</i>	<i>0.012</i>	<i>0.016</i>	<i>0.024</i>	<i>0.029</i>
Late Payments	0.010	0.009	0.011	0.021	0.023	0.028	0.028	0.038	0.041
Late payments, excl. Credit Lines	0.008	0.007	0.010	0.018	0.018	0.019	0.023	0.031	0.034

(b) Transition Matrix for the Universe of All Borrowers

		Performing	Past Due/Overdrawn	Substandard/Restructured	Bad Loans
		Loan State at 12/2010			
Loan State at 12/2009	Performing	94.62%	1.11%	3.04%	1.22%
	Past Due/Overdrawn	50.74%	10.45%	27.56%	11.25%
	Substandard/Restructured	10.84%	0.63%	66.15%	22.38%
	Bad Loans	0.23%	0.02%	0.66%	99.09%
		Loan State at 12/2011			
Loan State at 12/2010	Performing	94.85%	0.97%	3.15%	1.02%
	Past Due/Overdrawn	52.52%	13.12%	25.35%	9.01%
	Substandard/Restructured	8.55%	0.40%	68.68%	22.37%
	Bad Loans	0.29%	0.02%	0.34%	99.35%
		Loan State at 12/2012			
Loan State at 12/2011	Performing	92.71%	1.54%	4.34%	1.41%
	Past Due/Overdrawn	35.28%	12.08%	39.64%	13.00%
	Substandard/Restructured	6.17%	0.44%	70.30%	23.09%
	Bad Loans	0.11%	0.01%	0.38%	99.50%
		Loan State at 12/2013			
Loan State at 12/2012	Performing	91.77%	1.20%	5.60%	1.42%
	Past Due/Overdrawn	33.53%	13.01%	42.19%	11.27%
	Substandard/Restructured	4.17%	0.34%	64.69%	30.80%
	Bad Loans	0.10%	0.01%	0.29%	99.60%
		Loan State at time 12/2014			
Loan State at 12/2013	Performing	92.39%	1.04%	5.67%	0.90%
	Past Due/Overdrawn	27.49%	13.70%	46.91%	11.90%
	Substandard/Restructured	3.97%	0.22%	71.86%	23.94%
	Bad Loans	0.10%	0.01%	0.27%	99.62%

Table 2: Bank Characteristics

The table shows statistics on bank characteristics used in our analysis. The main sample covers the period 2008q4 - 2013q4.

The description of variables and their sources are given in the Data Appendix.

	mean	sd	p5	p25	p50	p75	p95
<i>total assets</i>	36,330	125,683	37	139	430	2,638	223,545
<i>badloans</i>	0.029	0.041	0.000	0.010	0.040	0.055	0.112
<i>profits</i>	0.021	0.033	-0.042	0.007	0.022	0.040	0.074
<i>liquidity</i>	0.163	0.147	0.040	0.060	0.128	0.254	0.460
<i>govbshock</i>	-0.082	0.551	-0.882	-0.196	0.000	0.035	0.591
<i>capital</i>	0.141	0.110	0.041	0.084	0.126	0.174	0.273
<i>stable funding</i>	0.598	0.307	0.020	0.414	0.678	0.859	0.923

Table 3: Firm Characteristics

The table shows statistics on firm characteristics employed in our analysis. The sample covers the period 2008q4 - 2013q4.

The description of variables and their sources are given in the Data Appendix.

	mean	p5	p25	p50	p75	p95
<i>employees</i>	151	5	24	49	105	450
<i>assets</i>	61,214	3,079	7,814	14,615	32,370	149,593
<i>debt/assets</i>	0.294	0.017	0.128	0.299	0.443	0.615
<i>age</i>	25	4	13	23	33	55
<i>riskyness</i> (<i>Z-SCORE</i> , 1-9)	5	1	3	5	6	8

Table 4: Judicial Efficiency in Italy: Length of Property Execution Proceedings

The table presents descriptive statistics on duration of property execution proceedings in 2007 (days, court-level data).

	mean	sd	p5	p25	p50	p75	p95
# of days	1,189	745	415	628	1,007	1,482	2,638

Table 5: Determinants of Late payments: Bank quality

The table presents regressions of *late payment* as a function of a set of bank characteristics. *Late payment (0,1)* is equal to 1 if the firm has a loan repayment delay with the bank in the quarter; 0 if loans granted by the bank to the firm are performing in the quarter. The sample covers the period 2008q4 - 2013q4. The description of variables and their sources are given in the Data Appendix. Standard errors are clustered at the bank-level. Asterisks denote significance at the 1%(***), 5%(**), 10%(*) level, respectively.

	(1)	(2)	(3)	(4)	(5)	(6)	(7)	(8)	(9)
<i>bkshare</i>	0.013***	0.013***	0.013***	0.012***	0.013***	0.013***	0.014***	0.012***	0.014***
<i>lnltot</i>	-0.001							-0.001	-0.001
<i>stable</i>		0.005						0.002	0.002
<i>liquidity</i>			-0.001					-0.006	-0.012
<i>cap</i>				0.008				0.021	0.037
<i>badloans</i>					0.114***			0.114**	0.099**
<i>govshock</i>						0.003*		0.002*	0.003
<i>profits</i>							-0.011		0.001
<i>firm*quarter fe</i>	<i>yes</i>	<i>yes</i>	<i>yes</i>	<i>yes</i>	<i>yes</i>	<i>yes</i>	<i>yes</i>	<i>yes</i>	<i>yes</i>
<i>bank fe</i>	<i>yes</i>	<i>yes</i>	<i>yes</i>	<i>yes</i>	<i>yes</i>	<i>yes</i>	<i>yes</i>	<i>yes</i>	<i>yes</i>
<i>N</i>	3,088,454	3,700,309	3,079,632	2,833,168	3,066,502	2,900,440	1,241,541	2,656,566	1,066,184

Table 6: Late payments, bank quality and firm size

The table presents regressions of *late payment* as a function of a set of bank characteristics. The model allows the effect of bank variables to vary by borrower size. Borrowers are sorted in four equal-sized bins based on their total assets (1=small; 4=large). *Late payment* (0,1) is equal to 1 if the firm has a loan repayment delay with the bank in the quarter; 0 if loans granted by the bank to the firm are performing in the quarter. The sample covers the period 2008q4 - 2013q4. The description of variables and their sources are given in the Data Appendix. Standard errors are clustered at the bank-level. Asterisks denote significance at the 1%(***), 5%(**), 10%(*) level, respectively.

	(1)	(2)	(3)	(4)	(5)
<i>bkshare</i>	0.013***	0.012***	0.014***		
<i>bkshare_1</i>				0.007***	0.008***
<i>bkshare_2</i>				0.008***	0.009***
<i>bkshare_3</i>				0.013***	0.013***
<i>bkshare_4</i>				0.022***	0.025***
<i>badloans_1</i>	0.052	0.078**	0.077**	0.077**	0.076*
<i>badloans_2</i>	0.085**	0.084*	0.042	0.084*	0.041
<i>badloans_3</i>	0.109***	0.129***	0.108***	0.129***	0.108***
<i>badloans_4</i>	0.169***	0.141**	0.138**	0.141**	0.138*
<i>stable_1</i>		0.001	0.003	0.001	0.003
<i>stable_2</i>		0.003	0.005	0.003	0.005
<i>stable_3</i>		0.002	0.000	0.002	0.000
<i>stable_4</i>		0.002	0.002	0.002	0.002
<i>govbshock_1</i>		0.002	0.002	0.001	0.002
<i>govbshock_2</i>		0.002	0.004	0.002	0.004
<i>govbshock_3</i>		0.003*	0.003	0.003*	0.003
<i>govbshock_4</i>		0.002	0.004	0.002	0.004
<i>lntot_1</i>		-0.001	-0.002	-0.001	-0.002
<i>lntot_2</i>		-0.001	-0.002	-0.001	-0.002
<i>lntot_3</i>		0.000	-0.001	0.000	-0.001
<i>lntot_4</i>		0.000	0.000	0.000	-0.001
<i>cap_1</i>		0.009	0.033	0.01	0.034
<i>cap_2</i>		0.015	0.016	0.016	0.017
<i>cap_3</i>		0.03	0.037	0.029	0.037
<i>cap_4</i>		0.028	0.057	0.028	0.056
<i>liquidity_1</i>		-0.014	-0.012	-0.015*	-0.012
<i>liquidity_2</i>		-0.015	-0.022**	-0.015	-0.022**
<i>liquidity_3</i>		-0.007	-0.007	-0.007	-0.007
<i>liquidity_4</i>		0.004	-0.011	0.005	-0.01
<i>prof_1</i>			-0.002		-0.003
<i>prof_2</i>			0.01		0.009
<i>prof_3</i>			-0.006		-0.006
<i>prof_4</i>			0.002		0.002
<i>firm*quarter fe</i>	<i>yes</i>	<i>yes</i>	<i>yes</i>	<i>yes</i>	<i>yes</i>
<i>bank fe</i>	<i>yes</i>	<i>yes</i>	<i>yes</i>	<i>yes</i>	<i>yes</i>
<i>N</i>	3,066,066	2,656,258	1,065,889	2,656,258	1,065,889
<i>Test of equality of 'badloans' coefficient across size classes</i>					
F-test (p-value)		0.07	0.02	0.07	0.02

Table 7: Late payments, bank quality and relationship lending

The table presents regressions of *late payment* as a function of a set of bank characteristics. The model allows the effect of bank variables to vary with strength of the bank relationship (*bkshare*). *Late payment (0,1)* is equal to 1 if the firm has a loan repayment delay with the bank in the quarter; 0 if loans granted by the bank to the firm are performing in the quarter. The sample covers the period 2008q4 - 2013q4. The description of variables and their sources are given in the Data Appendix. Standard errors are clustered at the bank-level. Asterisks denote significance at the 1%(***), 5%(**), 10%(*) level, respectively.

	(1)	(2)	(3)	(4)	(5)	(6)	(7)	(8)	(9)
<i>bkshare</i>	0.013***	0.016***	0.017***	0.017***	0.013***	0.021***	0.012***	0.038***	0.047***
<i>govbshock</i>	0.002*							0.002	0.003
<i>bkshare*govbshock</i>	0.003							0.002	0.002
<i>profits</i>		-0.005							0.006
<i>bkshare*profits</i>		-0.047							-0.039
<i>Intot</i>			-0.001					-0.000	-0.001
<i>bkshare*Intot</i>			-0.000					-0.001*	-0.002**
<i>stable</i>				0.006				0.004	0.005
<i>bkshare*stable</i>				-0.010*				-0.015*	-0.016
<i>liquidity</i>					-0.000			-0.008	-0.014
<i>bkshare*liquidity</i>					-0.002			0.020	0.021
<i>cap</i>						0.022		0.034	0.050
<i>bkshare*cap</i>						-0.112*		-0.094	-0.092
<i>badloans</i>							0.112***	0.114**	0.102**
<i>bkshare*badloans</i>							0.016	-0.002	-0.020
<i>firm*quarter fe</i>	<i>yes</i>	<i>yes</i>	<i>yes</i>	<i>yes</i>	<i>yes</i>	<i>yes</i>	<i>yes</i>	<i>yes</i>	<i>yes</i>
<i>bank fe</i>	<i>yes</i>	<i>yes</i>	<i>yes</i>	<i>yes</i>	<i>yes</i>	<i>yes</i>	<i>yes</i>	<i>yes</i>	<i>yes</i>
<i>N</i>	2,900,440	1,241,541	3,088,454	3,070,309	3,079,632	2,833,168	3,066,502	2,656,566	1,066,184

Table 8: Late payments and judicial efficiency

The table presents regressions of *late payment* as a function of a set of bank characteristics. The model allows the effect of bank variables to vary with (the natural log of) duration for property execution proceedings in 2007 (*inefflaw*). *Late payment (0,1)* is equal to 1 if the firm has a loan repayment delay with the bank in the quarter; 0 if loans granted by the bank to the firm are performing in the quarter. The sample covers the period 2008q4 - 2013q4. The description of variables and their sources are given in the Data Appendix. Standard errors are clustered at the bank-level. Asterisks denote significance at the 1%(***), 5%(**), 10%(*) level, respectively.

	(1)	(2)	(3)	(4)	(5)	(6)	(7)	(8)	(9)
<i>bkshare</i>								-0.002	-0.005
<i>bkshare*inefflaw</i>								0.002	0.003
<i>lntot</i>	-0.009							-0.011	-0.013
<i>lntot*inefflaw</i>	0.001							0.002	0.002
<i>stable</i>		-0.111*						-0.057	-0.075*
<i>stable*inefflaw</i>		0.017*						0.010	0.012*
<i>liquidity</i>			-0.069					0.172*	0.069
<i>liquidity*inefflaw</i>			0.010					-0.025*	-0.011
<i>cap</i>				-0.481				-0.398	-0.533
<i>cap*inefflaw</i>				0.072				0.060	0.082
<i>badloans</i>					-1.449***			-1.301***	-1.063***
<i>badloans*inefflaw</i>					0.220***			0.196***	0.162***
<i>govshock</i>						0.006		0.004	-0.000
<i>govshock*inefflaw</i>						-0.001		-0.000	0.001
<i>profits</i>							0.488***		0.017
<i>profits*inefflaw</i>							-0.072***		-0.001
<i>firm*quarter fe</i>		<i>yes</i>	<i>yes</i>	<i>yes</i>	<i>yes</i>	<i>yes</i>	<i>yes</i>	<i>yes</i>	<i>yes</i>
<i>bank fe</i>		<i>yes</i>	<i>yes</i>	<i>yes</i>	<i>yes</i>	<i>yes</i>	<i>yes</i>	<i>yes</i>	<i>yes</i>
<i>N</i>	3,141,104	3,122,707	3,132,225	2,882,328	3,118,981	2,949,849	1,262,333	2,656,566	1,066,184

Table 9: Late payments, bank quality and judicial efficiency, by firm size

The table presents regressions of *late payment* as a function of a set of bank characteristics. The model allows the effect of bank variables to vary with (the natural log of) duration for property execution proceedings (*inefflaw*) and by borrower size. Borrowers are sorted in four equal sized-bins based on their total assets (1=smaller; 4=larger). The *Late payment (0,1)* is equal to 1 if the firm has a loan repayment delay with the bank in the quarter; 0 if loans granted by the bank to the firm are performing in the quarter. The sample covers the period 2008q4 - 2013q4. The description of variables and their sources are given in the Data Appendix. Standard errors are clustered at the bank-level. Asterisks denote significance at the 1%(***), 5%(**), 10%(*) level, respectively.

	(1)	(2)	(3)	(4)
<i>bkshare</i>	0.012***	0.000		
<i>inefflaw*bkshare</i>		0.002		
<i>bkshare_1</i>			0.006***	0.003
<i>bkshare_2</i>			0.008***	0.003
<i>bkshare_3</i>			0.013***	0.022
<i>bkshare_4</i>			0.022***	-0.017
<i>inefflaw*bkshare_1</i>				0.000
<i>inefflaw*bkshare_2</i>				0.001
<i>inefflaw*bkshare_3</i>				-0.001
<i>inefflaw*bkshare_4</i>				0.006
<i>stable_1</i>	-0.064	-0.064	-0.064	-0.064
<i>stable_2</i>	-0.104**	-0.104**	-0.104**	-0.104**
<i>stable_3</i>	-0.053	-0.053	-0.053	-0.053
<i>stable_4</i>	-0.025	-0.025	-0.024	-0.024
<i>inefflaw*stable_1</i>	0.011	0.011	0.011	0.011
<i>inefflaw*stable_2</i>	0.017***	0.017***	0.017***	0.017***
<i>inefflaw*stable_3</i>	0.009	0.009	0.009	0.009
<i>inefflaw*stable_4</i>	0.005	0.005	0.005	0.005
<i>gobv_1</i>	0.031*	0.031*	0.031*	0.031*
<i>gobv_2</i>	-0.021	-0.021	-0.021	-0.021
<i>gobv_3</i>	-0.010	-0.010	-0.010	-0.010
<i>gobv_4</i>	0.019	0.019	0.019	0.019
<i>inefflaw*gobvshock_1</i>	-0.004	-0.004	-0.004	-0.004
<i>inefflaw*gobvshock_2</i>	0.003	0.003	0.003	0.003
<i>inefflaw*gobvshock_3</i>	0.002	0.002	0.002	0.002
<i>inefflaw*gobvshock_4</i>	-0.003	-0.003	-0.003	-0.003
<i>lntot_1</i>	-0.013	-0.013	-0.013	-0.013
<i>lntot_2</i>	-0.01	-0.010	-0.010	-0.010
<i>lntot_3</i>	-0.014	-0.014	-0.014	-0.014
<i>lntot_4</i>	-0.010	-0.009	-0.009	-0.009
<i>inefflaw*lntot_1</i>	0.002	0.002	0.002	0.002
<i>inefflaw*lntot_2</i>	0.001	0.001	0.001	0.001
<i>inefflaw*lntot_3</i>	0.002	0.002	0.002	0.002
<i>inefflaw*lntot_4</i>	0.001	0.001	0.001	0.001
<i>cap_1</i>	-0.469	-0.467	-0.454	-0.454
<i>cap_2</i>	-0.365	-0.364	-0.353	-0.351
<i>cap_3</i>	-0.034	-0.033	-0.035	-0.038
<i>cap_4</i>	-0.714	-0.715	-0.731	-0.728
<i>inefflaw*cap_1</i>	0.069	0.069	0.067	0.067
<i>inefflaw*cap_2</i>	0.054	0.054	0.052	0.052
<i>inefflaw*cap_3</i>	0.008	0.008	0.008	0.008
<i>inefflaw*cap_4</i>	0.107	0.107	0.109	0.109
<i>badloans_1</i>	-1.302***	-1.299***	-1.322***	-1.321***
<i>badloans_2</i>	-1.584***	-1.581***	-1.598***	-1.597***
<i>badloans_3</i>	-0.795***	-0.793***	-0.793***	-0.794***
<i>badloans_4</i>	-1.496***	-1.494***	-1.485***	-1.483***
<i>inefflaw*badloans_1</i>	0.193***	0.193***	0.196***	0.196***
<i>inefflaw*badloans_2</i>	0.233***	0.233***	0.235***	0.235***
<i>inefflaw*badloans_3</i>	0.127***	0.127***	0.127***	0.127***
<i>inefflaw*badloans_4</i>	0.225***	0.225***	0.224***	0.224***
<i>liquidity_1</i>	0.206**	0.204**	0.207**	0.207**
<i>liquidity_2</i>	0.265**	0.264**	0.263**	0.263**
<i>liquidity_3</i>	0.082	0.081	0.082	0.082
<i>liquidity_4</i>	0.116	0.116	0.117	0.115
<i>inefflaw*liq_1</i>	-0.032**	-0.031**	-0.032**	-0.032**
<i>inefflaw*liq_2</i>	-0.040**	-0.040**	-0.040**	-0.040**
<i>inefflaw*liq_3</i>	-0.012	-0.012	-0.012	-0.013
<i>inefflaw*liq_4</i>	-0.015	-0.015	-0.015	-0.015
<i>firm*quarter fe</i>	<i>yes</i>	<i>yes</i>	<i>yes</i>	<i>yes</i>
<i>bank fe</i>	<i>yes</i>	<i>yes</i>	<i>yes</i>	<i>yes</i>
<i>N</i>	2,656,258	2,656,258	2,656,258	2,656,258

Table 10: Late payments, bank quality and judicial efficiency, by firm riskiness

The table presents regressions of *late payment* as a function of a set of bank characteristics. The model allows the effect of bank variables to vary with (the natural log of) duration for property execution proceedings (*inefflaw*) and by borrower riskiness. Borrowers are sorted in risk bins (safe, vulnerable, risky) based on their z-score. The *Late payment (0,1)* is equal to 1 if the firm has a loan repayment delay with the bank in the quarter; 0 if loans granted by the bank to the firm are performing in the quarter. The sample covers the period 2008q4 - 2013q4. The description of variables and their sources are given in the Data Appendix. Standard errors are clustered at the bank-level. Asterisks denote significance at the 1%(***), 5%(**), 10%(*) level, respectively.

	(1)	(2)	(3)	(4)
<i>bkshare</i>	0.013***	-0.002		
<i>bkshare_safe</i>			-0.002	-0.009
<i>bkshare_vulnerable</i>			0.003	0.004
<i>bkshare_risky</i>			0.018	0.015
<i>bkshare*inefflaw</i>		0.002		
<i>inefflaw*bkshare_safe</i>			0.001	0.002
<i>inefflaw*bkshare_vulnerable</i>			0.001	0.001
<i>inefflaw*bkshare_risky</i>			0.002	0.003
<i>stable_safe</i>	-0.048	-0.048	-0.046	-0.086*
<i>stable_vulnerable</i>	-0.072*	-0.073*	-0.072*	-0.087*
<i>stable_risky</i>	-0.013	-0.013	-0.013	-0.031
<i>inefflaw*stable_safe</i>	0.008	0.008	0.008	0.014**
<i>inefflaw*stable_vulnerable</i>	0.012*	0.012*	0.012*	0.014**
<i>inefflaw*stable_risky</i>	0.003	0.003	0.003	0.005
<i>gov_safe</i>	0.016	0.016	0.015	0.003
<i>gov_vulnerable</i>	0.013	0.013	0.013	0.01
<i>gov_risky</i>	-0.026	-0.025	-0.025	-0.015
<i>inefflaw*gov_safe</i>	-0.002	-0.002	-0.002	-0.001
<i>inefflaw*gov_vulnerable</i>	-0.002	-0.002	-0.002	-0.001
<i>inefflaw*gov_risky</i>	0.004	0.004	0.004	0.003
<i>lntot_safe</i>	-0.013	-0.013	-0.013	-0.016
<i>lntot_vulnerable</i>	-0.01	-0.01	-0.011	-0.012
<i>lntot_risky</i>	-0.005	-0.005	-0.006	-0.009
<i>inefflaw*lntot_safe</i>	0.002	0.002	0.002	0.002
<i>inefflaw*lntot_vulnerable</i>	0.001	0.001	0.001	0.002
<i>inefflaw*lntot_risky</i>	0.001	0.001	0.001	0.001
<i>cap_safe</i>	-0.32	-0.314	-0.301	-0.091
<i>cap_vulnerable</i>	-0.224	-0.223	-0.218	-0.418
<i>cap_risky</i>	-0.934*	-0.936*	-0.969*	-1.134*
<i>inefflaw*cap_safe</i>	0.042	0.042	0.04	0.013
<i>inefflaw*cap_vulnerable</i>	0.03	0.03	0.03	0.063
<i>inefflaw*cap_risky</i>	0.154**	0.154**	0.159**	0.183**
<i>badloans_safe</i>	-0.826***	-0.823***	-0.855***	-0.667***
<i>badloans_vulnerable</i>	-1.178***	-1.176***	-1.172***	-1.056***
<i>badloans_risky</i>	-2.132***	-2.130***	-2.112***	-1.484***
<i>inefflaw*bad_safe</i>	0.119***	0.118***	0.123***	0.098***
<i>inefflaw*bad_vulnerable</i>	0.175***	0.175***	0.175***	0.158***
<i>inefflaw*bad_risky</i>	0.331***	0.331***	0.329***	0.239***
<i>liquidity_safe</i>	0.072	0.069	0.069	-0.013
<i>liquidity_vulnerable</i>	0.182*	0.181*	0.180*	0.1
<i>liquidity_risky</i>	0.215	0.215	0.223	0.084
<i>inefflaw*liq_safe</i>	-0.011	-0.01	-0.01	0.002
<i>inefflaw*liq_vulnerable</i>	-0.027*	-0.027*	-0.027*	-0.016
<i>inefflaw*liq_risky</i>	-0.03	-0.03	-0.031	-0.011
<i>prof_safe</i>				0.041
<i>prof_vulnerable</i>				-0.021
<i>prof_risky</i>				0.079
<i>inefflaw*prof_safe</i>				-0.005
<i>inefflaw*prof_vulnerable</i>				0.005
<i>inefflaw*prof_risky</i>				-0.011
<i>firm*quarter fe</i>	<i>yes</i>	<i>yes</i>	<i>yes</i>	<i>yes</i>
<i>bank fe</i>	<i>yes</i>	<i>yes</i>	<i>yes</i>	<i>yes</i>
<i>N</i>	2,656,549	2,656,549	2,656,549	1,066,145

Table 11: Robustness

The table presents regressions of *late payment* as a function of a set of bank characteristics. The model allows the effect of bank variables to vary with (the natural log of) duration for property execution proceedings in 2007 (*inefflaw*). *Late payment* (0,1) is equal to 1 if the firm has a loan repayment delay with the bank in the quarter; 0 if loans granted by the bank to the firm are performing in the quarter. The sample covers the period 2008q4 - 2013q4. The description of variables and their sources are given in the Data Appendix. Standard errors are clustered at the bank-level. Asterisks denote significance at the 1%(***), 5%(**), 10%(*) level, respectively. We do six robustness tests reported in Columns (1)-(6). Column (1): term loans only; column (2): include only the first quarter in which a loan becomes late (or overdrawn); column (3): control for four dimensions of loan terms (loan interest rate, share of loans with maturity less than one year, average ratio of collateral in accounts receivable to loan size, and average ratio of real-estate collateral to loan size); column (4): include only observations in which the bank and the lender are located in the same court jurisdiction; column (5): include $bank \times firm$ fixed effects; column (6): allow the effects of *badloans* to vary by region.

	(1)	(2)	(3)	(4)	(5)	(6)
<i>bkshare</i>	0.000	-0.003	-0.002	-0.010	-0.007	0.000
<i>bkshare*south</i>						0.054*
<i>bkshare*inefflaw</i>	0.002	0.001	0.003	0.003	0.001	0.002
<i>bkshare*south*inefflaw</i>						-0.006
<i>lntot</i>	0.014	-0.004	-0.028	0.046	-0.016	-0.008
<i>lntot*south</i>						-0.000
<i>lntot*inefflaw</i>	-0.002	0.001	0.004	-0.007	0.002	0.001
<i>lntot*south*inefflaw</i>						-0.000
<i>stable</i>	-0.017	-0.001	-0.083	0.096	-0.059	-0.076
<i>stable*south</i>						-0.027
<i>stable*inefflaw</i>	0.003	0.001	0.014*	-0.014	0.009	0.013*
<i>stable*south*inefflaw</i>						0.001
<i>liquidity</i>	0.127	0.054	0.149	-0.240	0.087	0.146
<i>liquidity*south</i>						0.176
<i>liquidity*inefflaw</i>	-0.025	-0.008	-0.023	0.039	-0.013	-0.021
<i>liquidity*south*inefflaw</i>						-0.023
<i>cap</i>	-0.140	-0.088	-0.539	-0.409	-0.343	-0.174
<i>cap*south</i>						-0.196
<i>cap*inefflaw</i>	0.017	0.012	0.081	0.056	0.056	0.025
<i>cap*south*inefflaw</i>						0.043
<i>badloans</i>	-0.521*	-0.670***	-1.669***	-3.167**	-1.077***	-1.434***
<i>badloans*south</i>						0.724
<i>badloans*inefflaw</i>	0.082**	0.102***	0.253***	0.477**	0.163***	0.215***
<i>badloans*south*inefflaw</i>						-0.101
<i>govbshock</i>	0.029**	0.005	0.010	-0.034	0.005	0.014
<i>govbshock*south</i>						-0.087**
<i>govbshock*inefflaw</i>	-0.004**	-0.000	-0.001	0.005	-0.001	-0.002
<i>govbshock*south*inefflaw</i>						0.013*
<i>Average interest rate</i>			0.001***			
<i>Share of short-term loans</i>			0.003*			
<i>Share of loans backed by real collateral</i>			0.003			
<i>Share of loans backed by acc. reciev.</i>			-0.018***			
<i>firm*quarter fe</i>	<i>yes</i>	<i>yes</i>	<i>yes</i>	<i>yes</i>	<i>yes</i>	<i>yes</i>
<i>bank fe</i>	<i>yes</i>	<i>yes</i>	<i>yes</i>	<i>yes</i>	<i>no</i>	<i>yes</i>
<i>bank*firm fe</i>	<i>no</i>	<i>no</i>	<i>no</i>	<i>no</i>	<i>yes</i>	<i>no</i>
<i>N</i>	2,404,775	2,622,440	1,861,912	222,888	2,644,991	2,595,610
<i>Test whether the effects of bad loans differ by region</i>						
<i>F</i> (2, 537)						0.820
<i>Prob > F</i>						0.442

Figure 1: Late payments and other problematic loans in Italy

The figure presents statistics on problematic loans for a sample of around 32,000 industrial firms based in Italy. The description of variables and their data sources are given in the Data Appendix.

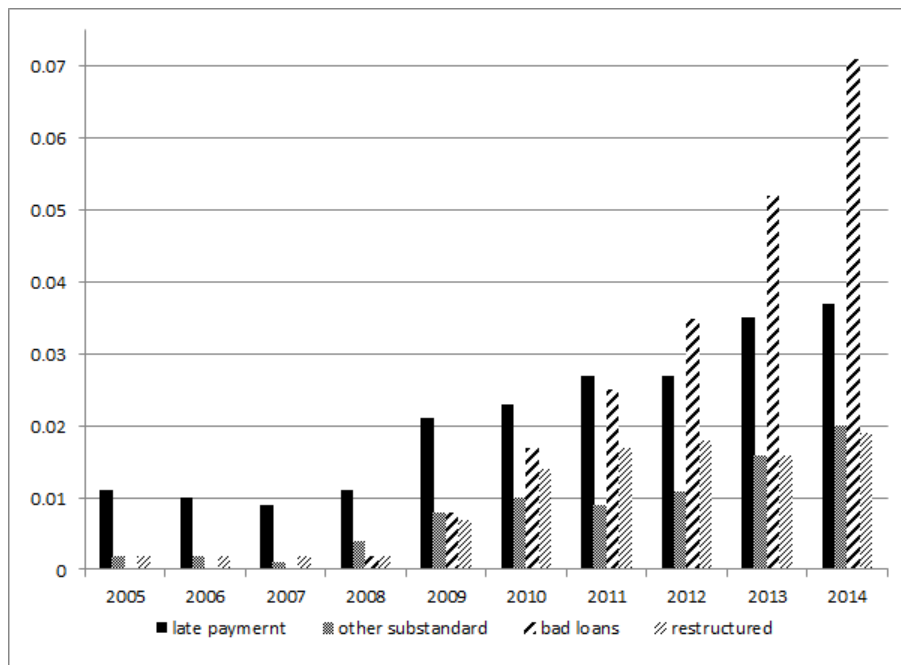


Figure 2: Judicial Efficiency in Italy: Length of Property Prosecution Proceedings across Italian Courts (2007, # of days)

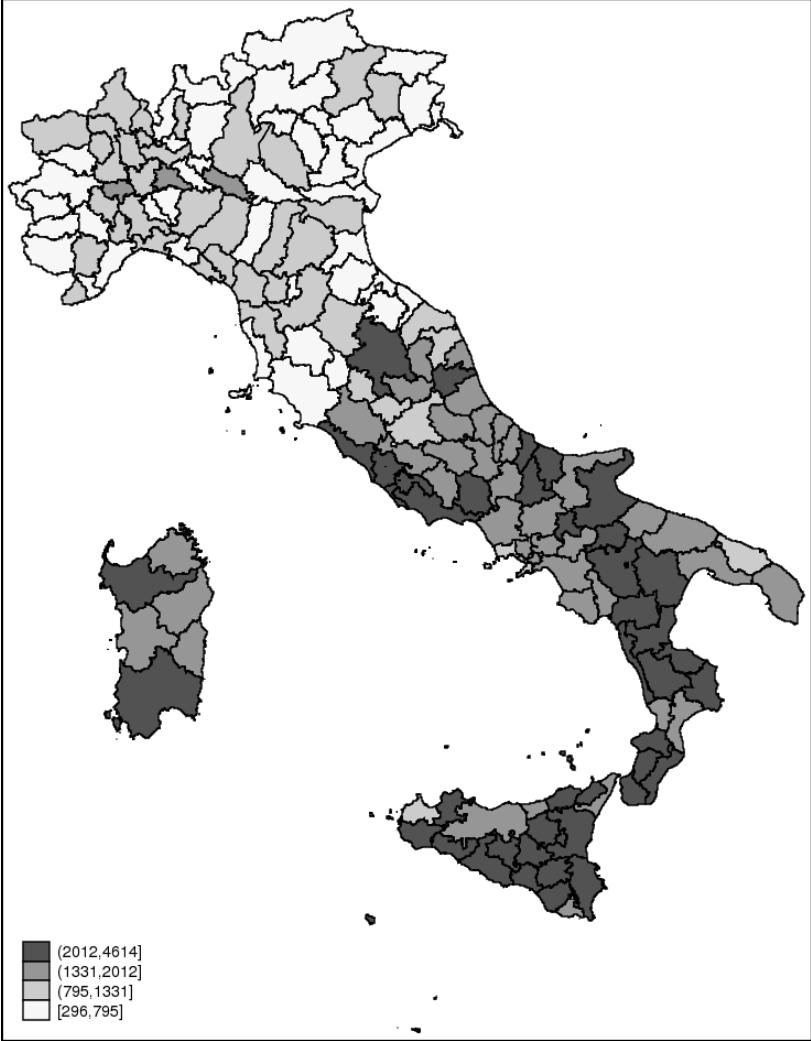


Figure 3: Marginal impacts of bad loans

The figure plots the marginal effect of bad loans on default likelihood (vertical axis) as a function of the duration for the property execution proceedings (horizontal axis, number of days)

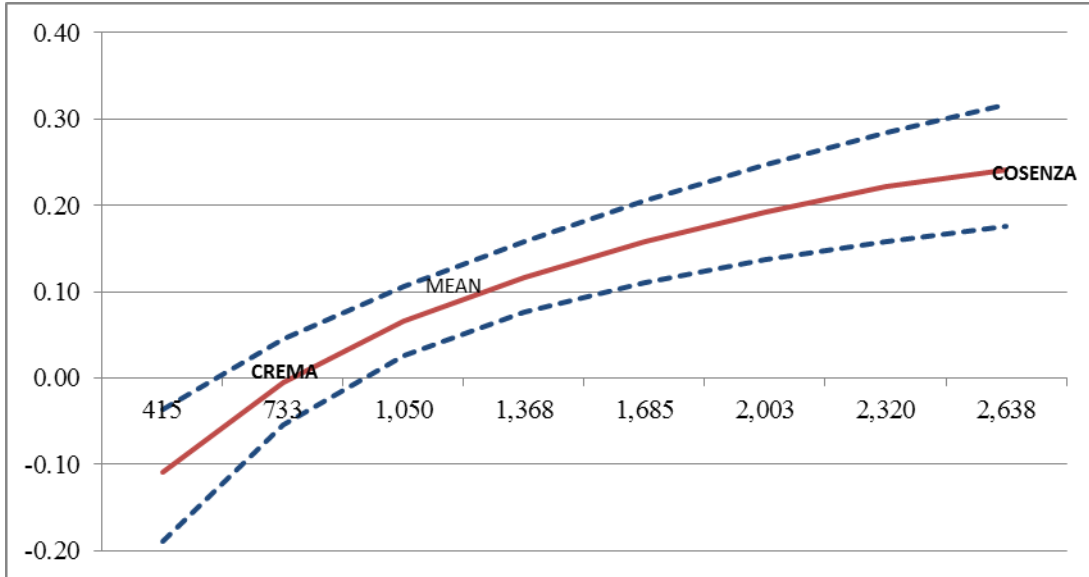


Figure 4: Marginal impacts of bad loans, by borrower risk type

The figure plots the marginal effect of bad loans on default likelihood (vertical axis) as a function of the duration for the property execution proceedings (horizontal axis, number of days), for different types of borrowers (safe, vulnerable, risky).

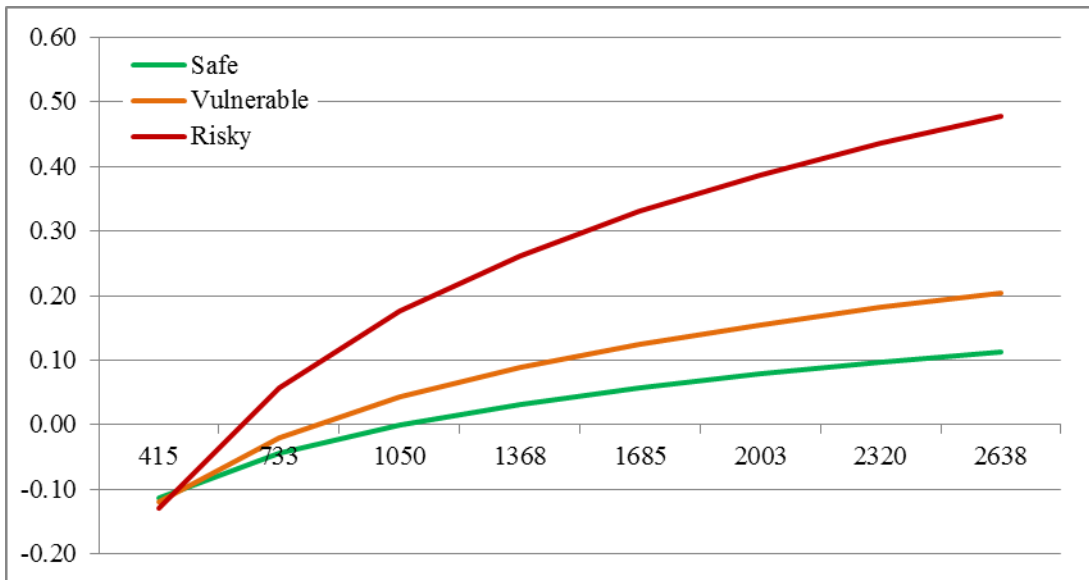
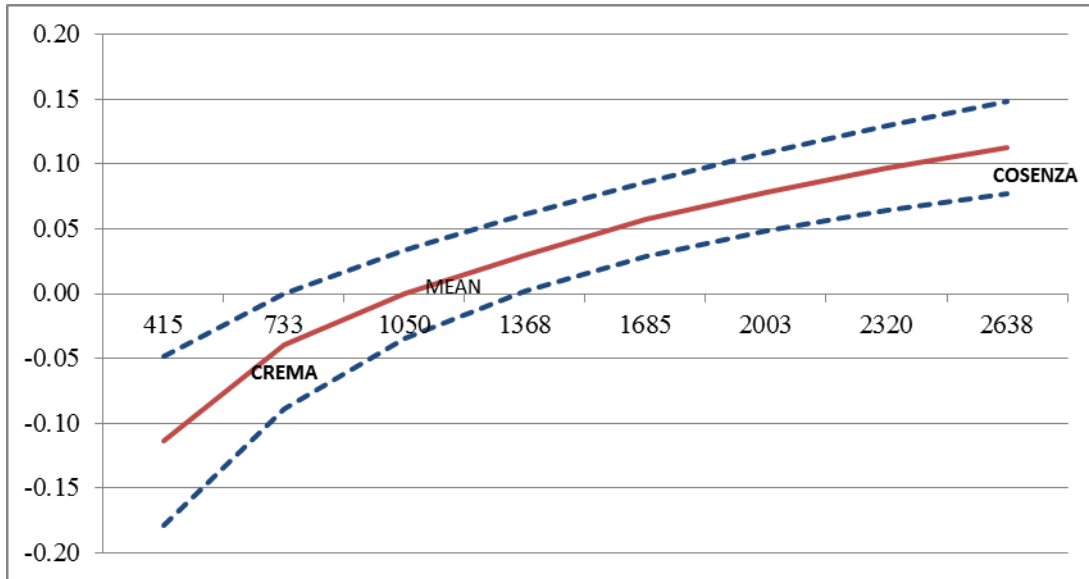


Figure 5: Marginal impacts of bad loans, safe borrowers

The figure plots the marginal effect of bad loans on default likelihood (vertical axis) as a function of the duration for the property execution proceedings (horizontal axis, number of days), for safe borrowers.



RECENTLY PUBLISHED “TEMI” (*)

- N. 1047 – *A new method for the correction of test scores manipulation* by Santiago Pereda Fernández (January 2016).
- N. 1048 – *Heterogeneous peer effects in education* by Eleonora Patacchini, Edoardo Rainone and Yves Zenou (January 2016).
- N. 1049 – *Debt maturity and the liquidity of secondary debt markets*, by Max Bruche and Anatoli Segura (January 2016).
- N. 1050 – *Contagion and fire sales in banking networks*, by Sara Cecchetti, Marco Rocco and Laura Sigalotti (January 2016).
- N. 1051 – *How does bank capital affect the supply of mortgages? Evidence from a randomized experiment*, by Valentina Michelangeli and Enrico Sette (February 2016).
- N. 1052 – *Adaptive models and heavy tails*, by Davide Delle Monache and Ivan Petrella (February 2016).
- N. 1053 – *Estimation of counterfactual distributions with a continuous endogenous treatment*, by Santiago Pereda Fernández (February 2016).
- N. 1054 – *Labor force participation, wage rigidities, and inflation*, by Francesco Nucci and Marianna Raggi (February 2016).
- N. 1055 – *Bank internationalization and firm exports: evidence from matched firm-bank data*, by Raffaello Bronzini and Alessio D’Ignazio (February 2016).
- N. 1056 – *Retirement, pension eligibility and home production*, by Emanuele Ciani (February 2016).
- N. 1057 – *The real effects of credit crunch in the Great Recession: evidence from Italian provinces*, by Guglielmo Barone, Guido de Blasio and Sauro Mocetti (February 2016).
- N. 1058 – *The quantity of corporate credit rationing with matched bank-firm data*, by Lorenzo Burlon, Davide Fantino, Andrea Nobili and Gabriele Sene (February 2016).
- N. 1059 – *Estimating the money market microstructure with negative and zero interest rates*, by Edoardo Rainone and Francesco Vacirca (February 2016).
- N. 1060 – *Intergenerational mobility in the very long run: Florence 1427-2011*, by Guglielmo Barone and Sauro Mocetti (April 2016).
- N. 1061 – *An evaluation of the policies on repayment of government’s trade debt in Italy*, by Leandro D’Aurizio and Domenico Depalo (April 2016).
- N. 1062 – *Market timing and performance attribution in the ECB reserve management framework*, by Francesco Potente and Antonio Scalia (April 2016).
- N. 1063 – *Information contagion in the laboratory*, by Marco Cipriani, Antonio Guarino, Giovanni Guazzarotti, Federico Tagliati and Sven Fischer (April 2016).
- N. 1064 – *EAGLE-FLI. A macroeconomic model of banking and financial interdependence in the euro area*, by Nikola Bokan, Andrea Gerali, Sandra Gomes, Pascal Jacquinot and Massimiliano Pisani (April 2016).
- N. 1065 – *How excessive is banks’ maturity transformation?*, by Anatoli Segura Velez and Javier Suarez (April 2016).
- N. 1066 – *Common faith or parting ways? A time-varying factor analysis*, by Davide Delle Monache, Ivan Petrella and Fabrizio Venditti (June 2016).
- N. 1067 – *Productivity effects of eco-innovations using data on eco-patents*, by Giovanni Marin and Francesca Lotti (June 2016).
- N. 1068 – *The labor market channel of macroeconomic uncertainty*, by Elisa Guglielminetti (June 2016).
- N. 1069 – *Individual trust: does quality of public services matter?*, by Silvia Camussi and Anna Laura Mancini (June 2016).

(*) Requests for copies should be sent to:

Banca d’Italia – Servizio Studi di struttura economica e finanziaria – Divisione Biblioteca e Archivio storico – Via Nazionale, 91 – 00184 Rome – (fax 0039 06 47922059). They are available on the Internet www.bancaditalia.it.

2014

- G. M. TOMAT, *Revisiting poverty and welfare dominance*, *Economia pubblica*, v. 44, 2, 125-149, **TD No. 651 (December 2007)**.
- M. TABOGA, *The riskiness of corporate bonds*, *Journal of Money, Credit and Banking*, v.46, 4, pp. 693-713, **TD No. 730 (October 2009)**.
- G. MICUCCI and P. ROSSI, *Il ruolo delle tecnologie di prestito nella ristrutturazione dei debiti delle imprese in crisi*, in A. Zazzaro (a cura di), *Le banche e il credito alle imprese durante la crisi*, Bologna, Il Mulino, **TD No. 763 (June 2010)**.
- F. D'AMURI, *Gli effetti della legge 133/2008 sulle assenze per malattia nel settore pubblico*, *Rivista di politica economica*, v. 105, 1, pp. 301-321, **TD No. 787 (January 2011)**.
- R. BRONZINI and E. IACHINI, *Are incentives for R&D effective? Evidence from a regression discontinuity approach*, *American Economic Journal : Economic Policy*, v. 6, 4, pp. 100-134, **TD No. 791 (February 2011)**.
- P. ANGELINI, S. NERI and F. PANETTA, *The interaction between capital requirements and monetary policy*, *Journal of Money, Credit and Banking*, v. 46, 6, pp. 1073-1112, **TD No. 801 (March 2011)**.
- M. BRAGA, M. PACCAGNELLA and M. PELLIZZARI, *Evaluating students' evaluations of professors*, *Economics of Education Review*, v. 41, pp. 71-88, **TD No. 825 (October 2011)**.
- M. FRANCESE and R. MARZIA, *Is there Room for containing healthcare costs? An analysis of regional spending differentials in Italy*, *The European Journal of Health Economics*, v. 15, 2, pp. 117-132, **TD No. 828 (October 2011)**.
- L. GAMBACORTA and P. E. MISTRULLI, *Bank heterogeneity and interest rate setting: what lessons have we learned since Lehman Brothers?*, *Journal of Money, Credit and Banking*, v. 46, 4, pp. 753-778, **TD No. 829 (October 2011)**.
- M. PERICOLI, *Real term structure and inflation compensation in the euro area*, *International Journal of Central Banking*, v. 10, 1, pp. 1-42, **TD No. 841 (January 2012)**.
- E. GENNARI and G. MESSINA, *How sticky are local expenditures in Italy? Assessing the relevance of the flypaper effect through municipal data*, *International Tax and Public Finance*, v. 21, 2, pp. 324-344, **TD No. 844 (January 2012)**.
- V. DI GACINTO, M. GOMELLINI, G. MICUCCI and M. PAGNINI, *Mapping local productivity advantages in Italy: industrial districts, cities or both?*, *Journal of Economic Geography*, v. 14, pp. 365-394, **TD No. 850 (January 2012)**.
- A. ACCETTURO, F. MANARESI, S. MOCETTI and E. OLIVIERI, *Don't Stand so close to me: the urban impact of immigration*, *Regional Science and Urban Economics*, v. 45, pp. 45-56, **TD No. 866 (April 2012)**.
- M. PORQUEDDU and F. VENDITTI, *Do food commodity prices have asymmetric effects on euro area inflation*, *Studies in Nonlinear Dynamics and Econometrics*, v. 18, 4, pp. 419-443, **TD No. 878 (September 2012)**.
- S. FEDERICO, *Industry dynamics and competition from low-wage countries: evidence on Italy*, *Oxford Bulletin of Economics and Statistics*, v. 76, 3, pp. 389-410, **TD No. 879 (September 2012)**.
- F. D'AMURI and G. PERI, *Immigration, jobs and employment protection: evidence from Europe before and during the Great Recession*, *Journal of the European Economic Association*, v. 12, 2, pp. 432-464, **TD No. 886 (October 2012)**.
- M. TABOGA, *What is a prime bank? A euribor-OIS spread perspective*, *International Finance*, v. 17, 1, pp. 51-75, **TD No. 895 (January 2013)**.
- G. CANNONE and D. FANTINO, *Evaluating the efficacy of european regional funds for R&D*, *Rassegna italiana di valutazione*, v. 58, pp. 165-196, **TD No. 902 (February 2013)**.
- L. GAMBACORTA and F. M. SIGNORETTI, *Should monetary policy lean against the wind? An analysis based on a DSGE model with banking*, *Journal of Economic Dynamics and Control*, v. 43, pp. 146-74, **TD No. 921 (July 2013)**.
- M. BARIGOZZI, CONTI A.M. and M. LUCIANI, *Do euro area countries respond asymmetrically to the common monetary policy?*, *Oxford Bulletin of Economics and Statistics*, v. 76, 5, pp. 693-714, **TD No. 923 (July 2013)**.
- U. ALBERTAZZI and M. BOTTERO, *Foreign bank lending: evidence from the global financial crisis*, *Journal of International Economics*, v. 92, 1, pp. 22-35, **TD No. 926 (July 2013)**.

- R. DE BONIS and A. SILVESTRINI, *The Italian financial cycle: 1861-2011*, *Cliometrica*, v.8, 3, pp. 301-334, **TD No. 936 (October 2013)**.
- G. BARONE and S. MOCETTI, *Natural disasters, growth and institutions: a tale of two earthquakes*, *Journal of Urban Economics*, v. 84, pp. 52-66, **TD No. 949 (January 2014)**.
- D. PIANESELLI and A. ZAGHINI, *The cost of firms' debt financing and the global financial crisis*, *Finance Research Letters*, v. 11, 2, pp. 74-83, **TD No. 950 (February 2014)**.
- J. LI and G. ZINNA, *On bank credit risk: systemic or bank-specific? Evidence from the US and UK*, *Journal of Financial and Quantitative Analysis*, v. 49, 5/6, pp. 1403-1442, **TD No. 951 (February 2015)**.
- A. ZAGHINI, *Bank bonds: size, systemic relevance and the sovereign*, *International Finance*, v. 17, 2, pp. 161-183, **TD No. 966 (July 2014)**.
- G. SBRANA and A. SILVESTRINI, *Random switching exponential smoothing and inventory forecasting*, *International Journal of Production Economics*, v. 156, 1, pp. 283-294, **TD No. 971 (October 2014)**.
- M. SILVIA, *Does issuing equity help R&D activity? Evidence from unlisted Italian high-tech manufacturing firms*, *Economics of Innovation and New Technology*, v. 23, 8, pp. 825-854, **TD No. 978 (October 2014)**.

2015

- G. DE BLASIO, D. FANTINO and G. PELLEGRINI, *Evaluating the impact of innovation incentives: evidence from an unexpected shortage of funds*, *Industrial and Corporate Change*, v. 24, 6, pp. 1285-1314, **TD No. 792 (February 2011)**.
- M. BUGAMELLI, S. FABIANI and E. SETTE, *The age of the dragon: the effect of imports from China on firm-level prices*, *Journal of Money, Credit and Banking*, v. 47, 6, pp. 1091-1118, **TD No. 737 (January 2010)**.
- R. BRONZINI, *The effects of extensive and intensive margins of FDI on domestic employment: microeconomic evidence from Italy*, *B.E. Journal of Economic Analysis & Policy*, v. 15, 4, pp. 2079-2109, **TD No. 769 (July 2010)**.
- A. DI CESARE, A. P. STORK and C. DE VRIES, *Risk measures for autocorrelated hedge fund returns*, *Journal of Financial Econometrics*, v. 13, 4, pp. 868-895, **TD No. 831 (October 2011)**.
- G. BULLIGAN, M. MARCELLINO and F. VENDITTI, *Forecasting economic activity with targeted predictors*, *International Journal of Forecasting*, v. 31, 1, pp. 188-206, **TD No. 847 (February 2012)**.
- A. CIARLONE, *House price cycles in emerging economies*, *Studies in Economics and Finance*, v. 32, 1, **TD No. 863 (May 2012)**.
- D. FANTINO, A. MORI and D. SCALISE, *Collaboration between firms and universities in Italy: the role of a firm's proximity to top-rated departments*, *Rivista Italiana degli economisti*, v. 1, 2, pp. 219-251, **TD No. 884 (October 2012)**.
- A. BARDOZZETTI and D. DOTTORI, *Collective Action Clauses: how do they Affect Sovereign Bond Yields?*, *Journal of International Economics*, v. 92, 2, pp. 286-303, **TD No. 897 (January 2013)**.
- D. DEPALO, R. GIORDANO and E. PAPAPETROU, *Public-private wage differentials in euro area countries: evidence from quantile decomposition analysis*, *Empirical Economics*, v. 49, 3, pp. 985-1115, **TD No. 907 (April 2013)**.
- G. BARONE and G. NARCISO, *Organized crime and business subsidies: Where does the money go?*, *Journal of Urban Economics*, v. 86, pp. 98-110, **TD No. 916 (June 2013)**.
- P. ALESSANDRI and B. NELSON, *Simple banking: profitability and the yield curve*, *Journal of Money, Credit and Banking*, v. 47, 1, pp. 143-175, **TD No. 945 (January 2014)**.
- M. TANELI and B. OHL, *Information acquisition and learning from prices over the business cycle*, *Journal of Economic Theory*, 158 B, pp. 585-633, **TD No. 946 (January 2014)**.
- R. AABERGE and A. BRANDOLINI, *Multidimensional poverty and inequality*, in A. B. Atkinson and F. Bourguignon (eds.), *Handbook of Income Distribution*, Volume 2A, Amsterdam, Elsevier, **TD No. 976 (October 2014)**.
- V. CUCINIELLO and F. M. SIGNORETTI, *Large banks, loan rate markup and monetary policy*, *International Journal of Central Banking*, v. 11, 3, pp. 141-177, **TD No. 987 (November 2014)**.
- M. FRATZSCHER, D. RIMEC, L. SARNOB and G. ZINNA, *The scapegoat theory of exchange rates: the first tests*, *Journal of Monetary Economics*, v. 70, 1, pp. 1-21, **TD No. 991 (November 2014)**.

- A. NOTARPIETRO and S. SIVIERO, *Optimal monetary policy rules and house prices: the role of financial frictions*, Journal of Money, Credit and Banking, v. 47, S1, pp. 383-410, **TD No. 993 (November 2014)**.
- R. ANTONIETTI, R. BRONZINI and G. CAINELLI, *Inward greenfield FDI and innovation*, Economia e Politica Industriale, v. 42, 1, pp. 93-116, **TD No. 1006 (March 2015)**.
- T. CESARONI, *Procyclicality of credit rating systems: how to manage it*, Journal of Economics and Business, v. 82, pp. 62-83, **TD No. 1034 (October 2015)**.
- M. RIGGI and F. VENDITTI, *The time varying effect of oil price shocks on euro-area exports*, Journal of Economic Dynamics and Control, v. 59, pp. 75-94, **TD No. 1035 (October 2015)**.

2016

- E. BONACCORSI DI PATTI and E. SETTE, *Did the securitization market freeze affect bank lending during the financial crisis? Evidence from a credit register*, Journal of Financial Intermediation, v. 25, 1, pp. 54-76, **TD No. 848 (February 2012)**.
- M. MARCELLINO, M. PORQUEDDU and F. VENDITTI, *Short-Term GDP Forecasting with a mixed frequency dynamic factor model with stochastic volatility*, Journal of Business & Economic Statistics, v. 34, 1, pp. 118-127, **TD No. 896 (January 2013)**.
- M. ANDINI and G. DE BLASIO, *Local development that money cannot buy: Italy's Contratti di Programma*, Journal of Economic Geography, v. 16, 2, pp. 365-393, **TD No. 915 (June 2013)**.
- L. ESPOSITO, A. NOBILI and T. ROPELE, *The Management of Interest Rate Risk During the Crisis: Evidence from Italian Banks*, Journal of Banking & Finance, v. 59, pp. 486-504, **TD No. 933 (September 2013)**.
- F. BUSETTI and M. CAIVANO, *The Trend–Cycle Decomposition of Output and the Phillips Curve: Bayesian Estimates for Italy and the Euro Area*, Empirical Economics, V. 50, 4, pp. 1565-1587, **TD No. 941 (November 2013)**.
- M. CAIVANO and A. HARVEY, *Time-series models with an EGB2 conditional distribution*, Journal of Time Series Analysis, v. 35, 6, pp. 558-571, **TD No. 947 (January 2014)**.
- G. ALBANESE, G. DE BLASIO and P. SESTITO, *My parents taught me. evidence on the family transmission of values*, Journal of Population Economics, v. 29, 2, pp. 571-592, **TD No. 955 (March 2014)**.
- R. BRONZINI and P. PISELLI, *The impact of R&D subsidies on firm innovation*, Research Policy, v. 45, 2, pp. 442-457, **TD No. 960 (April 2014)**.
- L. BURLON and M. VILALTA-BUFI, *A new look at technical progress and early retirement*, IZA Journal of Labor Policy, v. 5, **TD No. 963 (June 2014)**.
- A. BRANDOLINI and E. VIVIANO, *Behind and beyond the (headcount) employment rate*, Journal of the Royal Statistical Society: Series A, v. 179, 3, pp. 657-681, **TD No. 965 (July 2015)**.
- D. DOTTORI and M. MANNA, *Strategy and Tactics in Public Debt Management*, Journal of Policy Modeling, v. 38, 1, pp. 1-25, **TD No. 1005 (March 2015)**.
- A. CALZA and A. ZAGHINI, *Shoe-leather costs in the euro area and the foreign demand for euro banknotes*, International Journal of Central Banking, v. 12, 1, pp. 231-246, **TD No. 1039 (December 2015)**.
- E. CIANI, *Retirement, Pension Eligibility and Home Production*, Labour Economics, v. 38, pp. 106-120, **TD No. 1056 (March 2016)**.
- L. D'AURIZIO and D. DEPALO, *An Evaluation of the Policies on Repayment of Government's Trade Debt in Italy*, Italian Economic Journal, v. 2, 2, pp. 167-196, **TD No. 1061 (April 2016)**.

FORTHCOMING

- S. MOCETTI, M. PAGNINI and E. SETTE, *Information technology and banking organization*, Journal of Financial Services Research, **TD No. 752 (March 2010)**.
- F. BRIPI, *The role of regulation on entry: evidence from the Italian provinces*, World Bank Economic Review, **TD No. 932 (September 2013)**.

- G. DE BLASIO and S. POY, *The impact of local minimum wages on employment: evidence from Italy in the 1950s*, Regional Science and Urban Economics, **TD No. 953 (March 2014)**.
- A. L. MANCINI, C. MONFARDINI and S. PASQUA, *Is a good example the best sermon? Children's imitation of parental reading*, Review of Economics of the Household, **TD No. 958 (April 2014)**.
- L. BURLON, *Public expenditure distribution, voting, and growth*, Journal of Public Economic Theory, **TD No. 961 (April 2014)**.
- G. ZINNA, *Price pressures on UK real rates: an empirical investigation*, Review of Finance, **TD No. 968 (July 2014)**.
- A. BORIN and M. MANCINI, *Foreign direct investment and firm performance: an empirical analysis of Italian firms*, Review of World Economics, **TD No. 1011 (June 2015)**.
- F. CORNELI and E. TARANTINO, *Sovereign debt and reserves with liquidity and productivity crises*, Journal of International Money and Finance, **TD No. 1012 (June 2015)**.