



BANCA D'ITALIA
EUROSISTEMA

Temi di Discussione

(Working Papers)

External trade and monetary policy in a currency area

by Martina Cecioni

January 2010

number

738



BANCA D'ITALIA
EUROSISTEMA

Temi di discussione

(Working papers)

External trade and monetary policy in a currency area

by Martina Cecioni

Number 738 - January 2010

The purpose of the Temi di discussione series is to promote the circulation of working papers prepared within the Bank of Italy or presented in Bank seminars by outside economists with the aim of stimulating comments and suggestions.

The views expressed in the articles are those of the authors and do not involve the responsibility of the Bank.

Editorial Board: PATRIZIO PAGANO, ALFONSO ROSOLIA, UGO ALBERTAZZI, ANDREA NERI, GIULIO NICOLETTI, PAOLO PINOTTI, ENRICO SETTE, MARCO TABOGA, PIETRO TOMMASINO, FABRIZIO VENDITTI.

Editorial Assistants: ROBERTO MARANO, NICOLETTA OLIVANTI.

EXTERNAL TRADE AND MONETARY POLICY IN A CURRENCY AREA

by Martina Cecioni*

Abstract

For historical and geographical reasons, the member countries of the European Monetary Union (EMU) display different degrees of external trade openness. The paper lays out a model for a currency area composed of two regions. One region is more open to trade with a third country outside the area than the other. Using the utility-based loss function for the currency area, the optimal monetary policy is compared to the one for a homogeneous area. In the model with heterogeneity, the relative competitiveness across regions influences the extent to which shocks are transmitted to the area-wide inflation and output gap. Under a plausible calibration for the EMU, the optimal policy plan exhibits a stronger tendency towards currency area exchange rate stabilization than the one in the homogeneity case. Moreover, it is welfare-improving to forgo some area-wide inflation stabilization to dampen inflation differentials.

JEL Classification: E52, F41.

Keywords: Monetary union, optimal monetary policy, loss function.

Contents

1. Introduction.....	5
2. The external openness of EMU countries	9
3. The model	13
3.1 Households	13
3.2 Firms	16
3.3 Equilibrium.....	17
3.4 Solution of the model	17
4. The effects of heterogeneity	23
4.1 Calibration	23
4.2 The transmission mechanism of area-wide technology shocks.....	25
5. Optimal monetary policy	27
5.1 Flexible price equilibrium and the Pareto efficient allocation.....	27
5.2 The currency area welfare function	29
5.3 The IRFs to an area-wide technology shock under the optimal plan	31
5.4 The IRFs to an asymmetric technology shock under the optimal plan	34
5.5 The effects of the size of the regions	37
6. Conclusions.....	38
References	33
Appendix	42

* Bank of Italy, Economics, Research and International Relations

1 Introduction*

With the creation of the European Monetary Union (EMU) the member countries agreed to relinquish individual control on both the nominal interest rate and the nominal exchange rate. Some empirical studies confirm that the establishment of the currency area, by irrevocably fixing the exchange rates across member countries and thereby eliminating the related risk in foreign transactions, stimulated intra euro area trade.¹ However, there is no evidence of diversion of trade away from non-member countries (Micco *et al.*, 2003). We observe instead that some of the EMU countries have strong trade linkages with countries that do not belong to the euro area for mainly historical or geographical reasons, while others show a pattern of trade that is more oriented toward intra euro area goods. About ten years after the establishment of the EMU and despite ever increasing trade integration, member countries continue to display heterogeneity in their degree of openness toward countries outside the currency area.²

The heterogeneity along this dimension is relevant for setting the monetary policy stance in a currency area as the transmission mechanism of external shocks may differ across regions and monetary policy may become less effective in controlling inflation and stabilizing the output gap. Honohan and Lane (2003 and 2004) show that due to differences in the degree of external openness, since the adoption of the common currency, exchange rate movements have had an impact on inflation differentials within the EMU.

*This paper is a revised version of one chapter of my PhD dissertation, at Universitat Pompeu Fabra. My supervisor Jordi Galí provided great advice and support. I benefited from the comments of two anonymous referees, Paolo Angelini, José Dorich, Michele Lenza and Stefano Neri as well as participants at the CREI Macro Break seminar, Bank of Italy Lunch seminar, the 2007 ASSET conference, the 2008 Royal Economic Society conference and “The Euro Area, the Euro and the World Business Cycle” hosted in Aix-en-Provence in July 2008. Any remaining errors are my responsibility. The views expressed in this paper do not necessarily coincide with those of the Bank of Italy. Corresponding address: martina.cecioni@bancaditalia.it

¹One of the most recent estimates by Frankel (2008) found that the euro boosted intra-Eurozone trade by around 10 to 20% on average, in line with what was shown in previous studies (e.g. Baldwin, 2006).

²Ireland, the Netherlands and Belgium stand out in this respect. Between 1997 and 2006, both the average external trade volume over GDP and the average external imports over GDP ratios of Belgium, Ireland and the Netherlands were about three times higher than the corresponding ratios of the remaining euro-area countries. Furthermore, this is a rather stable fact over the sample considered.

The paper sets up a model for an open currency area composed of countries that have different trade linkages with the rest of the world. After deriving the microfounded welfare measure, it then solves for the optimal monetary policy from a currency area point of view. Under a plausible calibration for the EMU it analyzes how the degree of heterogeneity in the external dimension affects the optimal responses of the macroeconomic variables to area-wide and asymmetric shocks.

The adoption of a common currency by European countries has spawned a large body of work on monetary policy in currency areas. The common driver of these studies is the fact that the economies of EMU member countries display some structural differences. One strand of literature has been devoted to studying and documenting these differences. For instance, since the euro-area member countries display large and persistent inflation differentials relative to other currency areas (in particular the US)³, considerable effort has gone into understanding the sources of this dispersion.⁴

Building on these facts, a second strand of literature has focused on the optimal design of monetary and fiscal policy in currency areas. Benigno (2004) and Benigno and Lopez-Salido (2006) study the implications of, respectively, heterogeneous degrees of stickiness and different degrees of inflation persistence among regions for the optimal target of inflation in a currency area. Galí and Monacelli (2008) and Ferrero (2009) consider the role of independent fiscal policies in a currency area in which regions share the same structural features but are hit by asymmetric technology shocks.

The main contribution of this paper is to build external trade linkages with the rest of the world into a standard model for a currency area and to study the effect of cross-country dissimilarities on the degree of openness of the optimal monetary policy design. The main issue is not whether the EMU is an optimal currency area, but whether, given the institutional setting, the monetary policy prescriptions that are valid for a homogeneous economy can be applied to a heterogeneous economy.

The model shares most of its features with the New Open Economy macroeconomics literature. The parameter for the degree of external openness coincides with the preferences of households in each region for goods produced by the rest of the world. Symmetrically, the same parameter indi-

³See ECB (2003) for a careful analysis of different measures of inflation dispersion and a comparison with the US.

⁴See, among others, Angeloni and Ehrmann (2004) and Rabanal (2009).

cates the preferences of the rest of the world for the goods produced in each of the two regions.

When there is heterogeneity as to the degree of external openness, the dynamics of the area-wide inflation and output gap are affected by the relative competitiveness between regions. Therefore to describe fully the behavior of the area-wide economy the fluctuations of price differentials must be taken into account. The intuition for this result is the following. In an open currency area, shifts in the terms of trade between the monetary union and the rest of the world (hereafter *external* terms of trade) affect the demand for the goods produced in the area and thus its output gap and inflation. As to changes in the relative price between the goods produced in the two regions (hereafter *internal* terms of trade), their effects depend on the rest of the world's preferences for the goods produced in the two regions (i.e. the heterogeneity as defined above). If the rest of the world is neutral about consuming goods from one or the other region of the monetary union, price differentials among the regions induce the rest of the world to substitute the more expensive good with the cheaper one and the aggregate demand for currency area goods is not affected by them. If, instead, the rest of the world has a stronger preference for the goods produced by one of the two regions, this substitution is not perfect and the fluctuations of the internal terms of trade affect the aggregate demand of currency area goods coming from the rest of the world.

After deriving a quadratic utility-based loss function for the currency area, I solve for the full commitment optimal monetary policy from a timeless perspective. Several studies (e.g. De Paoli, 2009 and Faia and Monacelli, 2008) on the optimal monetary policy in an open economy have shown that, once one departs from a special parametrization⁵, the strict domestic inflation stabilization is no longer the first best policy and a partial stabilization of the exchange rate is desirable. This result holds in the case of a homogeneous currency area open to external trade. The paper shows that in the presence of heterogeneity the extent to which the exchange rate should be stabilized is reinforced and higher volatility of area-wide inflation is prescribed.

In response to an area-wide technology shock, for instance, the optimal response in a homogeneous economy is to partially accommodate the shock

⁵Namely, when the elasticity of intertemporal substitution of consumption or the intratemporal elasticity of substitution between domestic and foreign goods are different from one (Corsetti and Pesenti, 2001).

by reducing the nominal interest rate to stabilize area-wide inflation and the output gap. This policy generates a depreciation of the monetary union currency that boosts the external demand of currency area goods. When the regions of the currency area are heterogeneous, the shock generates higher inflation in the more open country. A depreciation of the nominal exchange rate would amplify these inflation differentials, as the more open region encounters stronger inflationary pressures. Since the inflation differentials cause deadweight losses according to the utility-based welfare of the currency area (see Benigno, 2004), it is welfare improving to reduce the nominal interest rate by less in order to attenuate the depreciation of the monetary union currency. This implies that higher fluctuations of the area-wide inflation are allowed in order to partially dampen those of the inflation differentials caused by the shock.

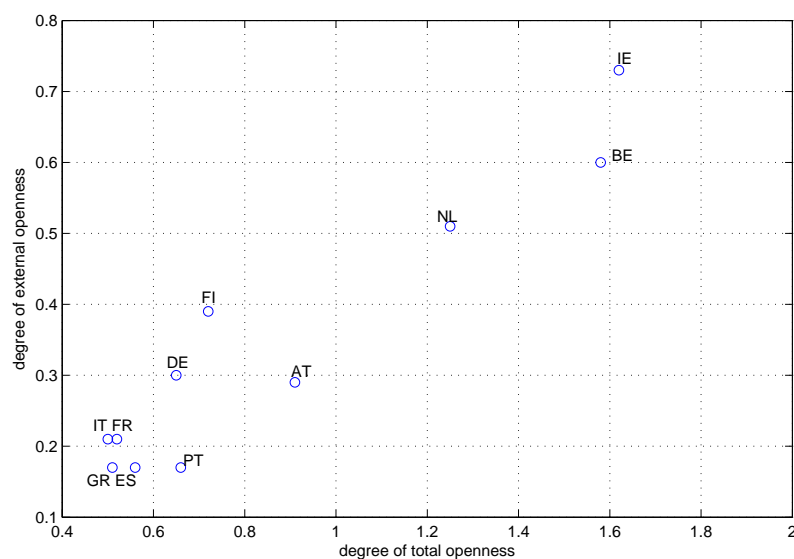
The result sheds light on an important point. It is commonly believed that in a currency area the centralized monetary authority has the ability to react only to aggregate disturbances while region-specific shocks can be stabilized only through other policy instruments, such as national fiscal policies (see Galí and Monacelli, 2008 and Ferrero, 2009). This paper shows that in a heterogeneous currency area the central bank, by internalizing that the transmission mechanism of monetary policy impulses differs across regions, is able to respond to idiosyncratic shocks. Furthermore, the optimal policy plan prescribes to make active use of this channel to influence inflation differentials since the aggregate welfare measure for the currency area also depends on them (see Benigno, 2004).

The rest of the paper is organized as follows. Section 2 illustrates some stylized facts about the external openness of EMU countries and describes the way in which this is incorporated in the model. Section 3 sets up the model for the currency area. Section 4 analyzes the effects of heterogeneity on the dynamics of the model. Section 5 derives and illustrates the optimal monetary policy plan. Section 6 concludes. The appendix illustrates the details of the solution of the model, the derivation of the approximated welfare measure and the equations that characterize the optimal plan.

2 The external openness of EMU countries

Figure 1 plots the degree of total openness against the degree of external openness of 11 EMU member countries.⁶ Both indicators are measured as the ratio of imports plus exports to GDP. The degree of total openness refers to trade flows with all countries whereas the degree of external openness refers to trade flows with countries that are not in the euro area.⁷

Figure 1: Degrees of total and external openness



Notes: Average of quarterly data between 1997 and 2006. The degree of total and external openness is constructed as the ratio of the imports plus exports, respectively toward all trading partners and toward countries that are not members of the euro area, over the GDP. Source: Eurostat.

According to figure 1, the countries that are more open to external trade are also those that are more open overall. Furthermore, one can identify three groups of countries. The first includes countries with a relatively low degree of external and total openness, namely France, Greece, Italy, Portugal and

⁶Luxembourg, Slovenia, Cyprus, Malta and Slovakia are excluded.

⁷The average degree of total openness across EMU members from 1997 to 2006 is 0.86 and the average degree of external openness over the same period is 0.34. The cross-country dispersions of the total and external degree of openness, as measured by the relative standard deviation, are 47% and 54% respectively.

Spain. Another group includes countries with a relatively high degree of external and total openness, namely Belgium, Ireland and the Netherlands. Finally, there is a third group of countries (Austria, Finland and Germany) that are in an intermediate position between the two above. This pattern has been quite stable over the last decade and a similar one can be observed if the degrees of openness are measured as (total and external) imports over GDP (see figure 2, panel (a)). In the composition of trade there is some dispersion across countries as well (see figure 2, panel (b)).

I introduce these features of the data in the model by assuming that the inhabitants of the two regions of the currency area differ in their preferences for goods produced by the rest of the world (*r.o.w.*) outside the area. The consumption bundles of citizens from regions 1 and 2 are given respectively by

$$C_t^1 = C_{1,t}^{1-\alpha-\omega+\varepsilon} C_{2,t}^\alpha C_{row,t}^{\omega-\varepsilon} \quad (1)$$

$$C_t^2 = C_{2,t}^{1-\alpha-\omega-\varepsilon} C_{1,t}^\alpha C_{row,t}^{\omega+\varepsilon} \quad (2)$$

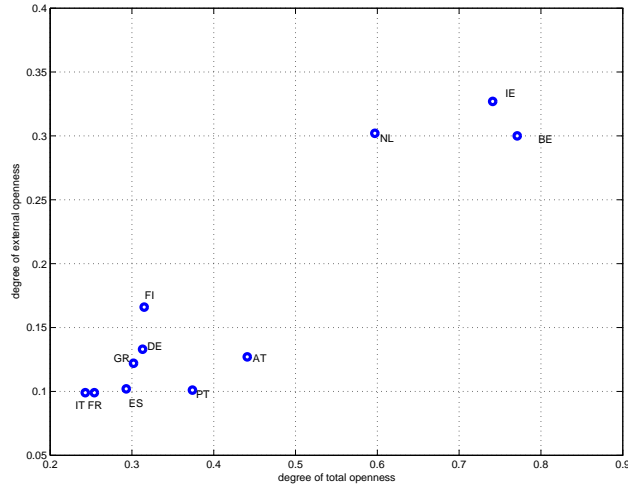
where $C_{i,t}$ is the consumption good produced in region $i = 1, 2$ and *r.o.w.*. This specification of preferences implies that the consumption basket of each region in the currency area includes, in addition to domestically produced goods, those produced in the other region of the currency area and in the rest of the world.⁸

The parameters α and $(\omega \pm \varepsilon)$ can be thought of as degrees of openness toward each trading partner. In fact, the steady state solution of the model described in the next section implies that these are the shares of imported consumption goods in total consumption. Thus, $\alpha + \omega - \varepsilon$ and $\alpha + \omega + \varepsilon$ are the degrees of total openness of regions 1 and 2 respectively.

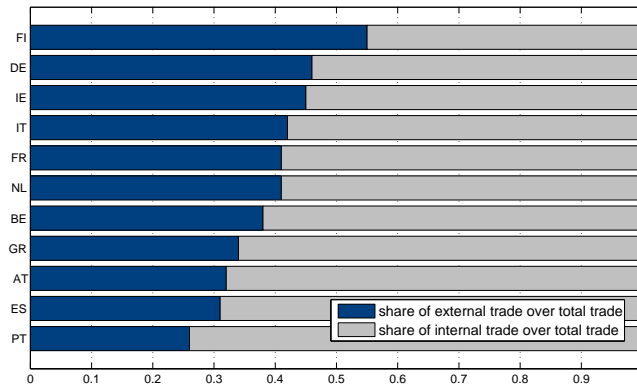
The proposed assumption on the composition of the consumption bundles in the two regions captures the fact that inside the EMU more open countries are also more open to external trade. The region that is more open to external trade (region 2) is also the one that has a lower degree of home bias (i.e. a higher degree of overall openness) and viceversa. The parameter α that indicates trade inside the currency area is constant across countries. This assumption is motivated by the need to keep the model simple by shut-

⁸In this way the degrees of external and total openness are modeled as a structural feature of the regions. This is what we observe since the pattern of figure 1 is quite stable over the period from 1997 to 2006.

Figure 2: Other measures of the external openness of EMU countries



(a) Total and external imports over the GDP



(b) External trade over total trade

Notes: Average of quarterly data between 1997 and 2006. Source: Eurostat.

ting down one possible source of asymmetry.⁹ Indeed the paper focuses on the

⁹Andrès et al. (2008) allows for differences in the degree of openness toward the other member countries in a model for a closed currency area.

effects of asymmetry in the degree of exposure to shocks originating outside the monetary union.

In a trade-balanced steady state, the chosen specification implies that the parameters $(\omega - \varepsilon)$ and $(\omega + \varepsilon)$ also indicate the share of the goods produced respectively in region 1 and 2 requested by the rest of the world. Under the chosen specification, region 2 is more open to external trade than region 1, not only because its consumption basket is more oriented towards foreign-produced goods, but also because the rest of the world demands more of its good. This is one way to capture the fact that some countries in the EMU have, for historical or geographical reasons, closer linkages with partners outside the currency area.

The parameter ε is an indicator of the heterogeneity in the preference toward goods from the *r.o.w.*. When $\varepsilon = 0$, the two regions have identical preferences for goods produced outside the currency area and symmetric preferences for their own produced goods. By setting $\varepsilon \neq 0$, the two regions diverge and the model is able to capture the heterogeneity described in figure 1.

To introduce heterogeneity in the external dimension of EMU countries, an alternative modeling strategy would have been the following

$$\begin{aligned} C_t^1 &= C_{1,t}^{(1-\alpha)} C_{2,t}^{\alpha(\omega+\varepsilon)} C_{row,t}^{\alpha(1-\omega-\varepsilon)} \\ C_t^2 &= C_{2,t}^{(1-\alpha)} C_{1,t}^{\alpha(\omega-\varepsilon)} C_{row,t}^{\alpha(1-\omega+\varepsilon)}. \end{aligned}$$

where now α indicates the degree of overall openness and $\alpha(1 - \omega \pm \varepsilon)$ the degree of external openness. In this case it is assumed that the two regions differ in their patterns of trade but not in the degree of total openness. This assumption, while consistent with the data shown in figure 2, is at odds with the data about the degree of total openness shown in figure 1. The assumption of preferences in (1) and (2) is consistent not only with the facts depicted in figure 1 but also with the existence of heterogeneity in the composition of the trade structure.¹⁰

¹⁰According to preferences (1) and (2), the share of trade with the rest of the world as a proportion of total trade is given by $\frac{\omega \pm \varepsilon}{\alpha + \omega \pm \varepsilon}$ and is therefore influenced by the degree of heterogeneity in trade, ε .

3 The model

The model presented in this section is a slight modification of the New Keynesian framework for open economies.¹¹ The world is composed of a currency area (U) and the rest of the world (ROW). The currency area is formed by two regions (hereinafter region 1 and 2). Both regions are inhabited by a continuum of identical households of mass one and are the same size. The two regions of the monetary union are explicitly modeled while the rest of the world is described by an exogenous stochastic process on the vector of the variables of interest.

3.1 Households

The representative household of each region $i = 1, 2$ has the following lifetime utility function

$$E_0 \sum_{t=0}^{\infty} \beta^t \left[\frac{(C_t^i)^{1-\sigma}}{1-\sigma} - \frac{(N_t^i)^{1+\varphi}}{1+\varphi} \right] \quad (3)$$

where N_t^i are the hours of labor supplied by the agent living in region i and C_t^i is a bundle of consumption goods coming from the two regions of the currency area and from the rest of the world. The bundles for the two regions are defined in equations (1) and (2). The Cobb-Douglas specification of preferences implies that the elasticity of substitution among goods is one.

The goods $C_{1,t}$, $C_{2,t}$ and $C_{row,t}$ are CES aggregates of differentiated varieties of each good and, for $i = 1, 2$ and *r.o.w.*, they are defined as follows¹²

$$C_{i,t} \equiv \left[\int_0^1 c_{i,t}(h)^{(\theta-1)/\theta} dh \right]^{\theta/(\theta-1)}$$

where h is a generic variety of the differentiated good i and $\theta > 1$ is the elasticity of substitution among varieties.

The representative household living in country i maximizes (3) subject to a sequence of budget constraints of the form

$$P_{i,t}^c C_t^i + E_t Q_{t,t+1} D_{t+1}^i \leq D_t^i + W_t^i N_t^i + T_t^i \quad (4)$$

where $P_{i,t}^c$ is the price index of the consumption bundle relevant for welfare in region i , expressed in the currency of the monetary union; D_{t+1}^i is the nominal

¹¹See Lane (2001) for a survey on the so-called New Open Economy macroeconomics.

¹²Hereinafter the subscript indicates the provenance of the good.

payoff in $t + 1$ of the portfolio of state-contingent claims held at the end of period t ; $Q_{t,t+1}$ is the stochastic discount factor for one period ahead nominal payoff relevant to the households living in country i ; W_t^i is the nominal wage and T_t^i are lump-sum transfers. I assume that markets are complete both at the domestic and international level.

As commonly found in the literature, the household problem can be solved in two steps. The first step implies solving for the optimal allocation of expenditure across the bundle of goods produced in different countries and across the varieties of each bundle. The solution yields to the following demand functions for $i, j = 1, 2$

$$\begin{aligned} c_{j,t}^i(h) &= \left(\frac{p_{j,t}(h)}{P_{j,t}} \right)^{-\theta} C_{j,t}^i \\ C_{j,t}^i &= \alpha \left(\frac{P_t^i}{P_{j,t}} \right) C_t^i \quad \text{for } j \neq i \\ C_{1,t}^1 &= (1 - \alpha - \omega + \varepsilon) \left(\frac{P_{1,t}^c}{P_{1,t}} \right) C_t^1 \\ C_{2,t}^2 &= (1 - \alpha - \omega - \varepsilon) \left(\frac{P_{2,t}^c}{P_{2,t}} \right) C_t^2. \end{aligned}$$

Similarly, the demand for goods imported from the rest of the world by households in the two regions are

$$\begin{aligned} C_{row,t}^1 &= (\omega - \varepsilon) \left(\frac{P_{1,t}^c}{P_{row,t}^* S_t} \right) C_t^1 \\ C_{row,t}^2 &= (\omega + \varepsilon) \left(\frac{P_{2,t}^c}{P_{row,t}^* S_t} \right) C_t^2 \end{aligned}$$

where S_t is the nominal exchange rate between the currency of the monetary union and that of the rest of the world and the asterisk on a variable indicates that it is expressed in the currency of the rest of the world. Given these demand functions one can define the following producer price (PPI) and consumer price (CPI) indices for the region $i = 1, 2$ of the monetary union

$$P_{i,t} = \left(\int_0^1 p_{i,t}(h)^{1-\theta} dh \right)^{1/(1-\theta)} \quad (5)$$

$$P_{1,t}^c = P_{1,t}^{(1-\alpha-\omega+\varepsilon)} P_{2,t}^\alpha \left(P_{row,t}^* S_t \right)^{(\omega-\varepsilon)} \quad (6)$$

$$P_{2,t}^c = P_{2,t}^{(1-\alpha-\omega-\varepsilon)} P_{1,t}^\alpha \left(P_{row,t}^* S_t \right)^{(\omega+\varepsilon)}. \quad (7)$$

The second step involves the household optimal choice of the hours worked and of the intertemporal allocation of consumption. The first order conditions for the representative agent of country $i = 1, 2$ are

$$(C_t^i)^\sigma (N_t^i)^\varphi = \frac{W_t^i}{P_{i,t}^c} \quad (8)$$

$$\beta \left(\frac{C_{t+1}^i}{C_t^i} \right)^{-\sigma} \left(\frac{P_{i,t}^c}{P_{i,t+1}^c} \right) = Q_{t,t+1}. \quad (9)$$

By taking expectations conditional on the information available at time t on both sides of (9) I obtain the following Euler equation

$$\beta R_t E_t \left\{ \left(\frac{C_{t+1}^i}{C_t^i} \right)^{-\sigma} \left(\frac{P_{i,t}^c}{P_{i,t+1}^c} \right) \right\} = 1 \quad (10)$$

where $R_t = 1/E_t Q_{t,t+1}$ is the return on a riskless bond in the currency of the monetary union. Under the assumption of complete markets, combining the Euler equations of each region and assuming that the initial debt holdings are equal across regions, one obtains the following risk sharing condition

$$C_t^1 = \left(\frac{P_{2,t}^c}{P_{1,t}^c} \right)^{1/\sigma} C_t^2 \quad ; \quad C_t^i = \left(\frac{P_{row,t}^c S_t}{P_{i,t}^c} \right)^{1/\sigma} C_t^{row} \quad for \quad i = 1, 2. \quad (11)$$

If $\sigma = 1$, i.e. the utility is logarithmic in consumption, the risk sharing is such that the consumption expenditure in the three countries is the same at each time t and the model does not exhibit a foreign asset dynamics. Even in this special parametric case, however, risk sharing is not perfect. In fact, the existence of home bias in consumption implies that purchasing power parity (PPP) does not hold.

Moreover, under the assumption of complete financial markets the equilibrium price of the foreign riskless bond in terms of the monetary union's currency is equal to $(R_t^*)^{-1} S_t = E_t Q_{t,t+1} S_{t+1}$. Combining it with the equilibrium price of the riskless bond in the currency area (that is $R_t = 1/E_t Q_{t,t+1}$), one obtains the uncovered interest parity (UIP) condition

$$E_t \left\{ Q_{t,t+1} \left[R_t - R_t^* \left(\frac{S_{t+1}}{S_t} \right) \right] \right\} = 0. \quad (12)$$

3.2 Firms

In each region there is a continuum of mass one of firms. Each firm produces a variety of the differentiated good in a regime of monopolistic competition. If a firm is located in region 1, it can produce only a variety of the consumption good produced in that region ($C_{1,t}$). The technology available to produce the variety h is linear in the labor input, i.e.

$$Y_{i,t}(h) = A_{i,t}N_t^i(h)$$

where $A_{i,t}$ is a technology shock that is region-specific.

Each firm chooses the price that maximizes its profit taking as given demand for its variety. The demand of variety h of the good produced in region $i = 1, 2$ and $j \neq i$ of the currency area is given by

$$y_{i,t}(h) = \left(\frac{p_{i,t}(h)}{P_{i,t}}\right)^{-\theta} \left[(1 - \alpha + \omega \pm \varepsilon) \left(\frac{P_{i,t}^c}{P_{i,t}}\right) C_t^i + \alpha \left(\frac{P_{j,t}^c}{P_{i,t}}\right) C_t^j + (\omega \pm \varepsilon) \left(\frac{P_{row,t}^c S_t}{P_{i,t}}\right) \right] C_t^{row}. \quad (13)$$

However, price stickiness à la Calvo implies that firms are not able to change their price whenever they want. Each period there is a probability δ , independent of time, that the price cannot be changed. This implies that the optimal price is decided in a forward-looking manner, as a markup charged over the expected value of future discounted marginal costs. The log-linear expression for the optimal new price is¹³

$$p_{i,t}^{new} = \mu + (1 - \beta\delta) \sum_{k=0}^{\infty} (\beta\delta)^k E_t \{ rmc_{i,t+k} + p_{i,t} \}.$$

where μ is the steady state level of the markup and depends on the substitutability among varieties (i.e. $\mu \equiv \frac{\theta}{\theta-1}$) and $rmc_{i,t+k}$ are the (log deviation) of the real marginal costs, defined in the next section.

¹³Variables written in lower case letters are log deviations from the deterministic steady state of that variable.

3.3 Equilibrium

The labor market is competitive and its clearing condition implies that firms' real marginal costs for $i = 1, 2$ are

$$RMC_{i,t} = (1 - \tau)(C_t^i)^\sigma (N_t^i)^\varphi \frac{P_{i,t}^c}{P_{i,t} A_{i,t}}. \quad (14)$$

where τ is a subsidy to the labor supply and it is assumed to be the same across regions of the currency area. Before deriving the clearing condition of the market for goods in each region, one must first aggregate across all varieties both the demand and the supply side. The index for aggregate output in region i is defined as $Y_{i,t} \equiv \left[\int_0^1 y_{i,t}(h)^{(\theta-1)/\theta} dh \right]^{\theta/(\theta-1)}$. Aggregating over all varieties h in equation (13), I obtain the following aggregate demand function for the goods 1 and 2

$$\begin{aligned} Y_{i,t} = & (1 - \alpha - \omega \pm \varepsilon) \left(\frac{P_{i,t}^c}{P_{i,t}} \right) C_t^i + \alpha \left(\frac{P_{j,t}^c}{P_{i,t}} \right) C_t^j + \\ & + (\omega \pm \varepsilon) \left(\frac{P_{row,t}^c S_t}{P_{i,t}} \right) C_t^{row} \quad \text{for } i, j = 1, 2 \text{ and } i \neq j \end{aligned} \quad (15)$$

To obtain the aggregate production function I make use of the index of aggregate employment defined by Galì and Monacelli (2005): $N_t^i \equiv \int_0^1 N_t^i(h) dh = \frac{Y_{i,t} Z_{i,t}}{A_{i,t}}$ where $Z_{i,t} \equiv \int_0^1 \frac{y_{i,t}(h)}{Y_{i,t}} dh$. They show that equilibrium variations of $z_{i,t} \equiv \log Z_{i,t}$ around the perfect foresight steady state are of second order and can thus be ignored in a first order approximation. The loglinear expression for the aggregate production function is then

$$y_{i,t} = a_{i,t} + n_{i,t}.$$

3.4 Solution of the model

In this section I propose a solution of the model described above that has three features. First, it is a log linear solution. The optimality conditions of the firms and households in each region together with the market clearing conditions are log linearized around the trade-balanced deterministic steady state. In this steady state the three countries share the same level of consumption, output and hours. Whenever ε is different from zero, the only

difference among the steady state equilibrium of each country is the composition of their consumption bundles.¹⁴

Second, instead of obtaining the dynamics of the macroeconomic variables of each of the two regions of the currency area, I rewrite the model so as to have a solution for the dynamics of area-wide variables and a solution for the differentials between the two regions. I obtain the area-wide variables by aggregating those of the two regions weighted by their relative size and the differentials by comparing the variables in the more open region with those in the more closed one. In other terms, considering the generic variable x , I define the area-wide corresponding variable as $x_u \equiv mx_1 + (1 - m)x_2$, where m is the size of the region 1, and the differentials as $x_r \equiv x_2 - x_1$. The model has therefore two blocks: the area-wide and the differentials block. Solving the model in this way allows me to shed light on what is the main contribution of introducing heterogeneity into an otherwise standard framework of a homogeneous currency area. In the benchmark case I assume that the regions are of equal size.

Third, I solve the model in the case of fully flexible prices and sticky prices. As is standard in the literature I then rewrite it in terms of the gaps between these two equilibria to highlight the effects of nominal rigidities.

Henceforth I use the following definitions. The *internal terms of trade* is the relative price of the good produced in the more open region of the currency area and the one produced in the less open one, i.e. $T^{in} \equiv \frac{P_2}{P_1}$. The *external terms of trade* is the relative price between the good produced in the rest of the world and the aggregate of the goods produced in the currency area, i.e. $T^{ex} \equiv \frac{SP_{row}^*}{P_u}$. Similarly, the *internal real exchange rate* is the ratio of the CPIs of the two regions, i.e. $Q^{in} \equiv \frac{P_2^c}{P_1^c}$. The *external real exchange rate* is the ratio of the CPIs of the rest of the world and the aggregate of the currency area, i.e. $Q^{ex} \equiv \frac{SP_{row}^c}{P_u^c}$. The internal terms of trade and real exchange rate can be thought of as measures of the producer and consumer price level differentials, respectively.

As mentioned above, the rest of the world is not explicitly modeled and fluctuations in its macroeconomic variables are specified as exogenous stochastic processes. In this section I report the equations that describe the dynamics of the small-scaled version of the model. The reader should refer

¹⁴It can be shown that both terms of trade, the one between the two regions of the currency area and the one between the currency area and the rest of the world, are uniquely pinned down in the perfect foresight steady state.

to the appendix for the algebraic derivations behind them.

3.4.1 The equations of the area-wide block

By combining the aggregate demand for the goods produced in the two regions of the currency area (equation (15) for $i = 1, 2$) and using the risk sharing conditions (11), I obtain the following aggregate demand for the goods produced in the currency area

$$y_{u,t} = \frac{1}{\sigma_\omega} t_t^{ex} + y_{row,t} - \sigma_\varepsilon t_t^{in} \quad (16)$$

where $y_{row,t}$ is the output of the rest of the world. The parameter σ_ε and σ_ω are combinations of the structural parameters that affect the openness dimension of the economy ($\alpha, \omega, \varepsilon$), the inverse of the intertemporal elasticity of substitution (σ) and the size of the regions, which is assumed to be equal to 0.5 throughout the paper (see appendix A).

Equation (16) is similar to the aggregate demand equation of the open economy of Galí and Monacelli (2005). Since the currency area economy is open to the rest of the world and given the assumption of market completeness, a change in the rest of the world output ($y_{row,t}$) affects the demand for currency area goods. Similarly, an increase of the external terms of trade enhances the competitiveness of the monetary union goods, thus boosting the aggregate demand for them. When there is no heterogeneity in the preferences, that is $\varepsilon = 0$, the parameter σ_ε is equal to zero.¹⁵ In this case the rest of the world is indifferent between the goods produced in the two regions and the average level of competitiveness of the currency area goods (t_t^{ex}) is sufficient to determine the aggregate demand for the area goods. When there is heterogeneity in preferences, that is $\varepsilon \neq 0$, the last term in (16) is different from zero and the price dispersion across regions matters. If, *ceteris paribus*, the goods produced by the more open region become more competitive (i.e. t_t^{in} decreases), the demand of currency area goods coming from the rest of the world increases.

As regards the supply side of the area-wide economy, log linearizing equation (14) for $i = 1, 2$, substituting for the risk sharing conditions (11) and aggregating across regions of the currency area, I obtain the following

¹⁵In this case, it also turns out that $\sigma_\omega = \frac{\sigma}{\omega\sigma + (\sigma-1)(1-\omega)\omega + (1-\omega)}$ and the currency area economy behaves exactly like the small open economy of Galí and Monacelli (2005).

expression for the area-wide real marginal costs

$$rmc_{u,t} = -\nu + (\sigma_\omega + \varphi)y_{u,t} + (\sigma - \sigma_\omega)y_{row,t} + \sigma_\omega\sigma_\varepsilon\tilde{t}_t^{in} - (1 + \varphi)a_{u,t}. \quad (17)$$

where $\nu = -\log(1 - \tau)$. Since the currency area is an open economy, the real marginal costs are affected not only by the demand for domestic goods ($y_{u,t}$) and by the domestic productivity level ($a_{u,t}$), but also by the world aggregate demand ($y_{row,t}$). For instance, an increase of the domestic and international demand calls for a higher labor supply that can be provided by households at higher real wages, driving up the real marginal cost.

In addition, when $\varepsilon \neq 0$, the internal terms of trade matter as well. In fact, in an open economy the real marginal costs depend also on the ratio between the consumer price level and the producer price level. This is because the real wage that matters for firms is deflated with the producer price index, while the one relevant for households is deflated with the consumer price index. If the two economies have the same degree of home bias the area-wide real marginal cost, aggregated from the two regions real marginal costs, is affected by the gap between the union CPI and the union PPI which can be rewritten in terms of the external terms of trade.¹⁶ When countries are heterogeneous in the degree of home bias (or external trade openness) the gap between the currency area CPI and the PPI does not depend only on the external terms of trade but also on the internal terms of trade.

Given the expression for the real marginal costs, the natural level of output, that is the level of output when prices are fully flexible, is given by¹⁷

$$\tilde{y}_{u,t} = \frac{\nu - \mu}{(\sigma_\omega + \varphi)} - \frac{\sigma - \sigma_\omega}{(\sigma_\omega + \varphi)}y_{row,t} - \frac{\sigma_\omega\sigma_\varepsilon}{(\sigma_\omega + \varphi)}\tilde{t}_t^{in} + \frac{(1 + \varphi)}{(\sigma_\omega + \varphi)}a_{u,t}. \quad (18)$$

Linearizing and aggregating across regions the firms' price optimality conditions imply that the inflation dynamics is described by the following New Keynesian Phillips curve¹⁸

$$\pi_{u,t} = \beta E_t \pi_{u,t+1} + \lambda rmc_{u,t}$$

where $\lambda = \frac{(1-\beta\delta)(1-\delta)}{\delta}$. Substituting for the real marginal costs I obtain

¹⁶Using equation (16) the external terms of trade can then be rewritten in terms of domestic and foreign demand, as in equation (17).

¹⁷The variables at their natural level are indicated by a tilde $\tilde{\cdot}$.

¹⁸For a complete derivation see Appendix B of Galí and Monacelli (2005).

$$\pi_{u,t} = \beta E_t \pi_{u,t+1} + \kappa_x^u x_{u,t} + \kappa_T^u (t_t^{in} - \tilde{t}_t^{in}) \quad (19)$$

where $x_{u,t}$ is the output gap (i.e. $x_{u,t} \equiv y_{u,t} - \tilde{y}_{u,t}$) and the parameters are given by

$$\begin{aligned} \kappa_x^u &\equiv \lambda(\sigma_\omega + \varphi) > 0 \\ \kappa_T^u &\equiv \lambda\sigma_\omega\sigma_\varepsilon > 0 \end{aligned}$$

In the absence of heterogeneity, the last term of (19) drops and the dynamics of the currency area inflation is described as the standard one of an open economy. When preferences are heterogeneous, inflationary or deflationary pressures arise also in the case in which the relative price of the currency area goods is not at its natural level.¹⁹ A positive internal terms of trade gap indicates that the price of good 1, the one preferred by most of the currency area citizens, is lower than it should be in the flexible price equilibrium. This brings about an inefficient reallocation of resources from region 2 toward region 1, generating an increase in the aggregate demand for currency area goods (beyond the one captured by the area-wide output gap term) that drives up inflation. The opening of an internal terms of trade gap implies that there is a trade-off between the output gap and the inflation stabilization in the currency area and that the complete stabilization of inflation is not equivalent to the stabilization of the gap between the actual and the natural output level. This trade-off arises endogenously after any misalignments of the price differentials from their natural level \tilde{t}_t^{in} .

From the household intertemporal first order conditions I obtain the following IS curve

$$x_{u,t} = E_t x_{u,t+1} + \sigma_\varepsilon E_t \Delta(t_{t+1}^{in} - \tilde{t}_{t+1}^{in}) - \frac{1}{\sigma_\omega} (r_t - E_t \pi_{u,t+1} - \tilde{r}r_{u,t}) \quad (20)$$

where $\tilde{r}r_{u,t}$ is the natural rate of interest, which is a function of the primitive shocks in the currency area economy

$$\tilde{r}r_{u,t} \equiv \phi_{y_{row}} E_t \Delta y_{row,t+1} + \phi_{t^{in}} E_t \Delta \tilde{t}_{t+1}^{in} + \phi_{a_u} E_t \Delta a_{u,t+1}.$$

¹⁹Note that in a first order approximation the only relevant relative price in the currency area is the internal terms of trade.

where $\phi_{y_{row}}$, $\phi_{t^{in}}$ and ϕ_{a_u} are defined in the appendix. Interestingly, the internal terms of trade gap also plays a role in the aggregate demand side of the currency area economy.²⁰

3.4.2 The equations of the differentials block

The dynamics of the inflation differentials in the currency area are given by

$$\pi_{r,t} = \beta E_t \pi_{r,t+1} + \lambda r m c_{r,t}.$$

After solving for the difference of the real marginal costs in the more and less open region, the inflation differentials are given by the following equation

$$\pi_{r,t} = \beta E_t \pi_{r,t+1} + \kappa_T^r (t_t^{in} - \tilde{t}_t^{in}) + \kappa_x^r x_{u,t}. \quad (21)$$

where

$$\begin{aligned} \kappa_x^r &\equiv \lambda \xi_{ex} \sigma_\omega > 0 \\ \kappa_T^r &\equiv \lambda (\xi_{in} + \xi_{ex} \sigma_\omega \sigma_\varepsilon) < 0 \end{aligned}$$

As specified in the appendix, the parameter ξ_{ex} is equal to zero when $\varepsilon = 0$. Hence, heterogeneity implies that the area-wide variables, namely the output gap, affect the dynamics of the differentials.

Benigno (2004) points out the disconnection of the terms of trade dynamics from the area-wide block of the model in a currency area with homogenous regions hit by asymmetric shocks and the inability for the authority that controls the area-wide nominal interest rate to affect the differentials. This is a feature of the proposed model when $\varepsilon = 0$. Instead, when $\varepsilon \neq 0$, the area-wide and difference blocks of the model cannot be solved separately.

When prices are fully flexible, the internal terms of trade is affected by asymmetric shocks (i.e. $a_{r,t}$) and, whenever there is heterogeneity across regions, by the area-wide shocks (i.e. $a_{u,t}$ and $y_{row,t}$). The natural internal terms of trade is thus

$$\tilde{t}_t^{in} = \gamma_{y_{row}} y_{row,t} + \gamma_{a_u} a_{u,t} - \gamma_{a_r} a_{r,t}. \quad (22)$$

where $\gamma_{y_{row}}$, γ_{a_u} and γ_{a_r} are defined in the appendix.

The block of the model that describes the behavior of the differentials within the currency area is closed by specifying the dynamics of the internal

²⁰The determinants of natural internal terms of trade are defined in the next section.

terms of trade gap. From the definition of the internal terms of trade (i.e. $t_t^{in} \equiv p_{2,t} - p_{1,t}$) this is given by

$$t_t^{in} - \tilde{t}_t^{in} = t_{t-1}^{in} - \tilde{t}_{t-1}^{in} + \pi_{r,t} - (\tilde{t}_t^{in} - \tilde{t}_{t-1}^{in}). \quad (23)$$

4 The effects of heterogeneity

This section analyzes quantitatively the effect of heterogeneity on the dynamics of the area-wide inflation and output gap, the inflation differentials and the terms of trade in the model set up above. I first describe the calibration for the EMU and then I study the transmission mechanism of a symmetric technology shock under an *ad hoc* monetary policy rule.

4.1 Calibration

The time period is the quarter. The value for the time-discount parameter β is set equal to 0.99 so that the steady state real interest rate is 4% in annual terms. The inverse of the intertemporal elasticity of substitution σ is set equal to 2. There is no clear evidence on what should be the value of this parameter. However, in studying the effects of external developments on the domestic economy in the case of complete markets, one wants to depart from the case of logarithmic utility (i.e. $\sigma = 1$) because it implies that the external influences on the domestic economy are shut down and the open economy is isomorphic to the closed one.²¹ The parameter φ represents the inverse of the labor supply elasticity and, as is common in the real business cycle literature, it is set at 3. The elasticity of substitution between varieties of each differentiated good (θ) is equal across countries and it is set so that the steady state mark up is 1.2. Therefore, θ equals 6. I calibrate the Calvo parameter δ , which indicates the degree of price stickiness using the standard value of 0.75, as it is frequent in the literature. This implies an average duration of the price contract of four quarters.

The parameters for the degrees of openness that need to be calibrated are α , ω and ε . The first one is the degree of internal openness and it is calibrated as the average of the GDP share of imports from other members of the union across 11 European countries.²² In fact, there is heterogeneity

²¹See Clarida et al. (2001).

²²Luxembourg, Slovenia, Cyprus, Malta and Slovakia are excluded.

across member countries in this parameter too. However, for the reasons explained in section 2, I restrict it to be the same across countries so as to insulate the effect of heterogeneity in the degree of external openness. Hence, I set $\alpha = 0.25$. The parameter for external openness ω is set equal to the average of the GDP share of the external imports across 11 member countries of the euro area, that is $\omega = 0.17$. The parameter that measures heterogeneity ε takes the values of 0 and 0.14. The former represents the theoretical case of homogeneous regions whereas the latter is set so that $\omega + \varepsilon$ is the average degree of external openness across the more open countries (the Netherlands, Belgium and Ireland).

There are three sources of exogenous fluctuations in the model: the aggregate technology shock $a_{u,t}$, the asymmetric technology shock $a_{r,t}$ and the external shock $y_{row,t}$. I assume that their stochastic processes are all AR(1). To calibrate the parameters of the external shock process I use the log of the world demand variable of the Area Wide Model dataset (Fagan *et al.*, 2001) and I fit the following univariate trend-stationary process ²³

$$y_{row,t} = 0.60 + 0.0003t + 0.94y_{row,t-1} + \epsilon_{row,t}.$$

The standard deviation of the innovations is $\sigma_{y_{row}} = 0.005859$. In order to calibrate the shocks for the area-wide productivity and differentials, I consider the primitive technology shocks in the two regions and I specify them as

$$\begin{aligned} a_{1,t} &= \rho a_{1,t-1} + \epsilon_{1,t} \\ a_{2,t} &= \rho a_{2,t-1} + \epsilon_{2,t}. \end{aligned}$$

The persistence parameter ρ and the standard deviation of the innovation σ_ϵ are the same across regions and equal respectively to 0.94 and 0.0061, based on the evidence of Smets and Wouters (2005) for the entire euro area. Moreover the shocks are uncorrelated across regions (i.e. $corr(\epsilon_{1,t}, \epsilon_{2,t}) = 0$). Hence, the processes for $a_{u,t} \equiv ma_{1,t} + (1 - m)a_{2,t}$ and $a_{r,t} \equiv a_{2,t} - a_{1,t}$ have the following specification

$$\begin{aligned} a_{u,t} &= \rho a_{u,t-1} + \epsilon_{u,t} \\ a_{r,t} &= \rho a_{r,t-1} + \epsilon_{r,t} \end{aligned}$$

where the variance of the innovations are $\sigma_u^2 = [m^2 + (1 - m)^2] \sigma_\epsilon^2$ and $\sigma_r^2 = 2\sigma_\epsilon^2$.

²³I used quarterly data from 1970:1 until 2005:4.

4.2 The transmission mechanism of area-wide technology shocks

To highlight the effect of heterogeneity in the transmission mechanism of an exogenous disturbance and its interaction with nominal rigidities, I consider the responses to an i.i.d. area-wide technology shock under a monetary policy regime of strict inflation targeting. The monetary policy is represented by the following targeting rule

$$\pi_{u,t} = 0.$$

Figure 3 displays the responses of the area-wide and differentials variables to a positive one percent symmetric shock in technology (a_u) in the case of homogeneous (solid line) and heterogeneous regions (starred line).

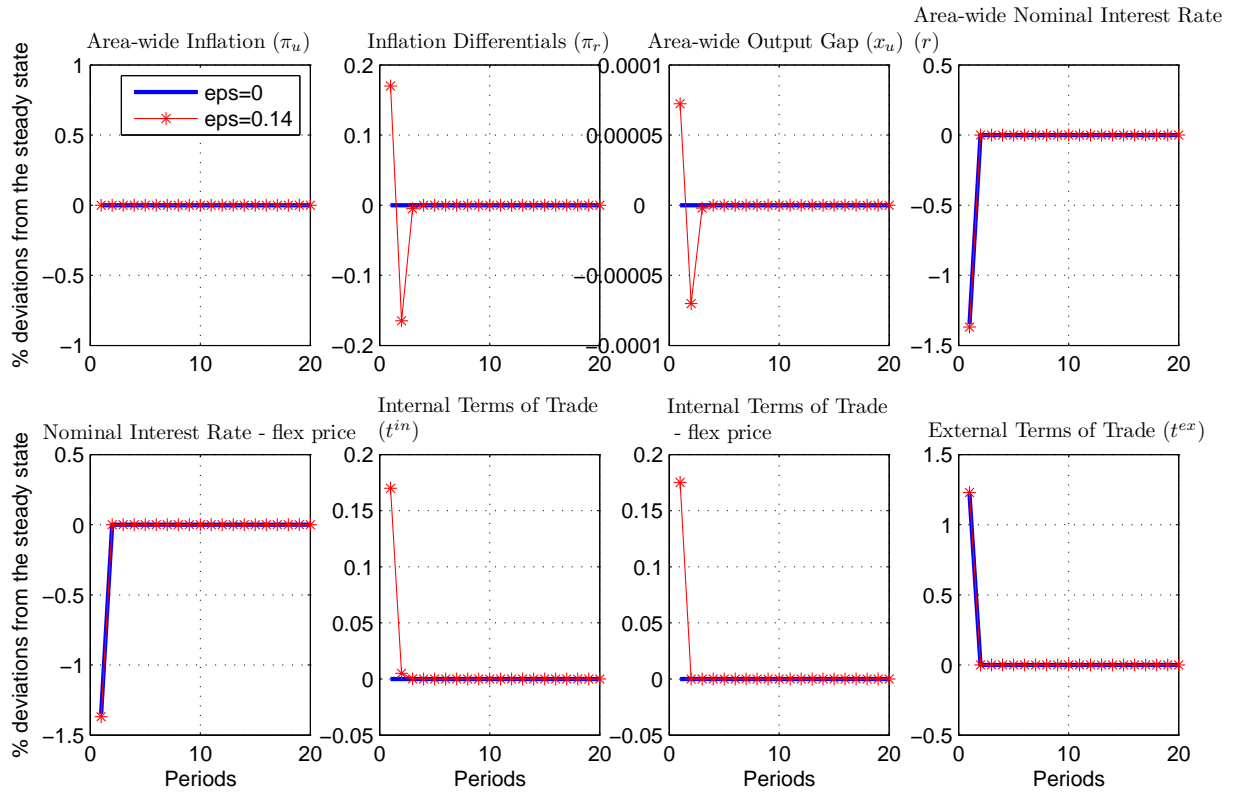
A positive technology shock induces a decline in the natural interest rate of the currency area. In order to keep inflation stable the monetary authority fully accommodates this decline by decreasing the nominal interest rate. If the rest of the world does not respond to the shock, the monetary policy response generates a depreciation of the nominal exchange rate on impact and an increase of the external terms of trade.

When the regions of the currency area are homogeneous (i.e. $\varepsilon = 0$) the dynamics of the model are standard. Under the policy of strict inflation stabilization, the central bank adjusts the nominal interest rate so that the area-wide inflation remains stable. This policy results in closing the gap between the actual and natural output level. The currency area goods are more competitive following the exogenous rise in productivity and the depreciation of the nominal exchange rate induced by the monetary policy response. Moreover, the internal terms of trade is not affected by the area-wide technology shock and no inflation differentials are generated.

When the regions of the currency area have different degrees of exposure to the rest of the world (i.e. $\varepsilon \neq 0$), the nominal depreciation generated by the monetary policy response has a different impact on the two regions. The demand for the goods produced by the more open region (good 2) increases more than the one for the other goods produced in the area. The different demand pressures induce an adjustment of the relative price of the goods in the two regions, that is an increase in the internal terms of trade.

The dynamics of the inflation differentials are driven by the gap between the actual internal terms of trade and its flexible price level and by the area-wide output gap. As pointed out by Aoki (2001) and Benigno (2004), the

Figure 3: IRFs to a positive area-wide technology shock under strict inflation targeting



Notes: The shock is equal to 1% st dev of the area-wide technology. The solid line is the homogeneity case ($\varepsilon = 0$); the starred line the heterogeneity one ($\varepsilon = 0.14$).

complete price stabilization brought about by the policy rule considered here has the effect of inducing a sluggish response of the actual internal terms of trade.²⁴ The internal terms of trade gap is thus negative on impact and positive in subsequent periods. A negative internal terms of trade gap indicates that, due to nominal rigidities, the relative price of the goods produced in

²⁴Aoki (2001) and Benigno (2004) focus on changes in the natural level of the relative price (or internal terms of trade) caused by asymmetric shocks across countries (or sectors). Here these changes are brought about by the heterogeneous transmission mechanism of a symmetric shock.

the more open region is lower than in the flexible price equilibrium. This generates inflationary pressures on that region and thus an inflation differential. The increase of the area-wide output gap in the quarter of the shock exacerbates the effect on the inflation differentials. Inheriting the sluggishness of the internal terms of trade, the inflation differentials are slightly more persistent than the shock that generates them.²⁵

5 Optimal monetary policy

I compute and analyze the solution of the model presented above under a policy that maximizes the welfare of the currency area households. I obtain a microfounded measure of welfare by taking a second order approximation of the utilities of the currency area citizens. The optimal monetary policy problem takes the form of a standard linear-quadratic optimization problem as is common in the literature.²⁶ In this section I describe the distortions of the market allocation with respect to the Pareto efficient one, the welfare measure adopted and some moments that characterize the optimal policy plan, namely the impulse response functions after an area-wide and an asymmetric technology shock. Throughout the analysis it is assumed that the two regions are of equal size. In the last subsection, I consider the case in which the more open region is smaller in order to check how size affects the results.

5.1 Flexible price equilibrium and the Pareto efficient allocation

In the open currency area described above three distortions move the market allocation away from the Pareto efficient one. Firstly, firm's market power lowers the output relative to the one in the efficient equilibrium. Secondly, the presence of nominal rigidities alter the relative prices, thereby causing a misallocation of resources across the varieties of the differentiated goods.

²⁵Whenever there is heterogeneity across regions, the sluggishness of the internal terms of trade is transmitted to the area-wide variables. The effect is, however, quantitatively small in a two-region economy. Carlstrom et al. (2006) show that differences in the degree of price stickiness or asymmetric sectoral monetary policy responses generate movements in relative prices that affect the inflation and output gap in aggregate. In this case, asymmetric responses to area-wide shocks, due to heterogeneity in preferences, is what generates a terms of trade dynamics.

²⁶See Benigno and Woodford (2006).

Furthermore, the market equilibrium allocation does not take into account the incentive to distort the terms of trade with the rest of the world in a way that is beneficial to the currency area citizens.²⁷ The social planner of the currency area, in fact, would tend to increase domestic consumers' purchasing power internationally. An improvement in the external terms of trade induces the currency area citizens to consume more of the imported good, reducing the hours worked without diminishing their overall level of consumption. Heterogeneity *per se* does not introduce a distortion in the economy. It is the stickiness of prices coupled with the fact that the nominal exchange rate across regions is irrevocably fixed that generates an additional distortion in the economy: the sluggish adjustment of the relative price of the goods produced in the two regions after a shock implies a misallocation of the resources.²⁸

Galí and Monacelli (2005) show the optimality of strict domestic inflation stabilization for a special parametrization under which both the intertemporal and the intratemporal elasticities of substitution are equal to unity. In this case a constant subsidy to monopolistic competitive firms in steady state is sufficient to guarantee the coincidence between the flexible price allocation and the efficient one. When the subsidy is implemented, the only distortion left in the economy is price stickiness; setting inflation to zero delivers the Pareto efficient allocation. However, in this special case the economy behaves as if it is closed. Faia and Monacelli (2008) and De Paoli (2009) relax these assumptions and show that, in the more realistic case in which the three distortions mentioned above are in place, the markup stabilization implemented by the flexible price allocation is not optimal and some inflation volatility, together with a partial stabilization of the exchange rate, is instead advisable.

Since this paper studies how the degree of openness affects monetary policy design in a currency area it is important to consider a calibration so that the currency area economy is not isomorphic to a closed one. For this reason in the benchmark calibration the intertemporal elasticity of substitution is different from one. Thus, in the open currency area, even when the labor subsidy is in place, the flexible price equilibrium allocation is not optimal, independently to the degree of heterogeneity across regions.

²⁷See, among others, Corsetti and Pesenti (2001) and De Paoli (2009).

²⁸Aoki (2001) and Benigno (2004) highlight this distortion.

5.2 The currency area welfare function

This subsection describes the welfare measure for the currency area economy, which is based on the discounted sum of the future utility flows of the households of both regions of the monetary union. For region $i = 1, 2$ the utility flows are given by

$$w_t^i = U(C_t^i, N_t^i) \equiv \left[\frac{(C_t^i)^{1-\sigma}}{1-\sigma} - \frac{(N_t^i)^{1+\varphi}}{1+\varphi} \right].$$

Depending on the region in which they live, there are two types of agents in the currency area. As monetary policy is decided at an area-wide level, the relevant welfare function must be only one and a criterion to aggregate the utility functions of each type of agent is needed. I consider a utilitarian social welfare function. Among the aggregation functions, this specification places less emphasis on the heterogeneity across regions and implies that the currency area welfare function is a weighted average of the welfare of each region, where the weights are equal to the size of the regions, that is

$$W^u \equiv E_0 \sum_{t=0}^{\infty} \beta^t [mw_t^1 + (1-m)w_t^2].$$

In order to have the optimal monetary policy problem in the standard linear-quadratic form I take a second order Taylor expansion of the utility flows of each region around the optimal deterministic steady state. Then I aggregate across regions and, after substituting for the linear terms using the second order approximation of the model's equilibrium condition, I obtain a purely quadratic approximation of the currency area welfare function. The objective of the currency area benevolent monetary authority can be written as follows

$$-E_0 \sum_{t=0}^{\infty} \beta^t L_t^u$$

where L_t^u is a measure of the deadweight losses:²⁹

$$\begin{aligned} L_t^u = & \left\{ \Phi_{\pi_u} \pi_{u,t}^2 + \Phi_{x_u} (y_{u,t} - \tilde{y}_{u,t})^2 + \Phi_{t^{in}} (t_t^{in} - \tilde{t}_t^{in})^2 + \Phi_{\pi_r} \pi_{r,t}^2 + \right. \\ & \left. + \Phi_{x_u, t^{in}} (y_{u,t} - \tilde{y}_{u,t}) (t_t^{in} - \tilde{t}_t^{in}) \right\} + t.i.p. + o(\|\xi\|^3) \end{aligned} \quad (24)$$

²⁹Details on the derivation of this function are in the Appendix. A double tilde $\tilde{\tilde{\cdot}}$ on a variable indicates that it is at its efficient level.

where a double tilde on a variable indicates its efficient level, *t.i.p.* stands for terms independent from policy and $o(\|\xi\|^3)$ contains all terms that are of order higher than two in the given bound for the vector of shocks $\xi \equiv [y_{row} \ a_u \ a_r]'$. The deadweight losses are generated by any deviation of the actual variables from their efficient level. The parameters Φ s are functions of the structural parameters of the model and their values under the baseline calibration described in section 4.1 are reported in table 1.

Table 1: The coefficients of the utility-based loss function under the benchmark calibration

ε	0	0.14
Φ_{π_u}	69.9	69.9
Φ_{x_u}	3.54	3.52
Φ_{π_r}	17.5	17.5
$\Phi_{t^{in}}$	0.07	0.07
$\Phi_{x_u, t^{in}}$	0	-0.14

When $\varepsilon = 0$, the loss function in (24) is similar to the one obtained in Benigno (2004). In particular, compared with the loss function of a closed economy, there are two additional quadratic terms beyond the ones on inflation and the output gap: the internal terms of trade gap and the inflation differentials. The deviation of the internal terms of trade from its efficient level generates losses as resources are inefficiently moved from one region to the other. As explained above, the internal terms of trade does not adjust immediately to region-specific fluctuations because there is price stickiness and the nominal exchange rate is irrevocably fixed.

Moreover, equation (24) features not only a term that penalizes the fluctuations in area-wide inflation, but also one that penalizes those in the inflation differentials. As shown by Woodford (2003, ch. 6) the presence of nominal rigidities in the form of Calvo price stickiness generates a motive for inflation stabilization. Since we assumed that this distortion in the market equilibrium is present in the production of goods in both regions, implementing the efficient allocation requires that the inflation of the domestic goods produced in each region is stabilized. A loss function that penalizes only the aggregate currency area inflation does not guarantee that the volatilities of the national inflations will be minimized. What is required is that both the

area-wide inflation and the differentials across regions are stabilized.³⁰

When $\varepsilon \neq 0$, the negative comovement between the area-wide output gap and the internal terms of trade gap gives rise to a deadweight loss ($\Phi_{x_u, tin}$ is zero when $\varepsilon = 0$ and negative when $\varepsilon > 0$). A positive internal terms of trade gap indicates a competitive advantage for the country that is less oriented towards producing goods for the rest of the world market, inducing a decline in the demand for currency area goods coming from the rest of the world. When this is coupled with a negative area-wide output gap the efficiency cost of the shift of the work effort toward the more competitive country is higher.

5.3 The IRFs to an area-wide technology shock under the optimal plan

Figure 4 describes the impulse response functions (IRFs) to an area-wide technology shock under the optimal policy plan, comparing the case in which regions are homogeneous ($\varepsilon = 0$) with the one in which regions are heterogeneous ($\varepsilon = 0.14$).³¹

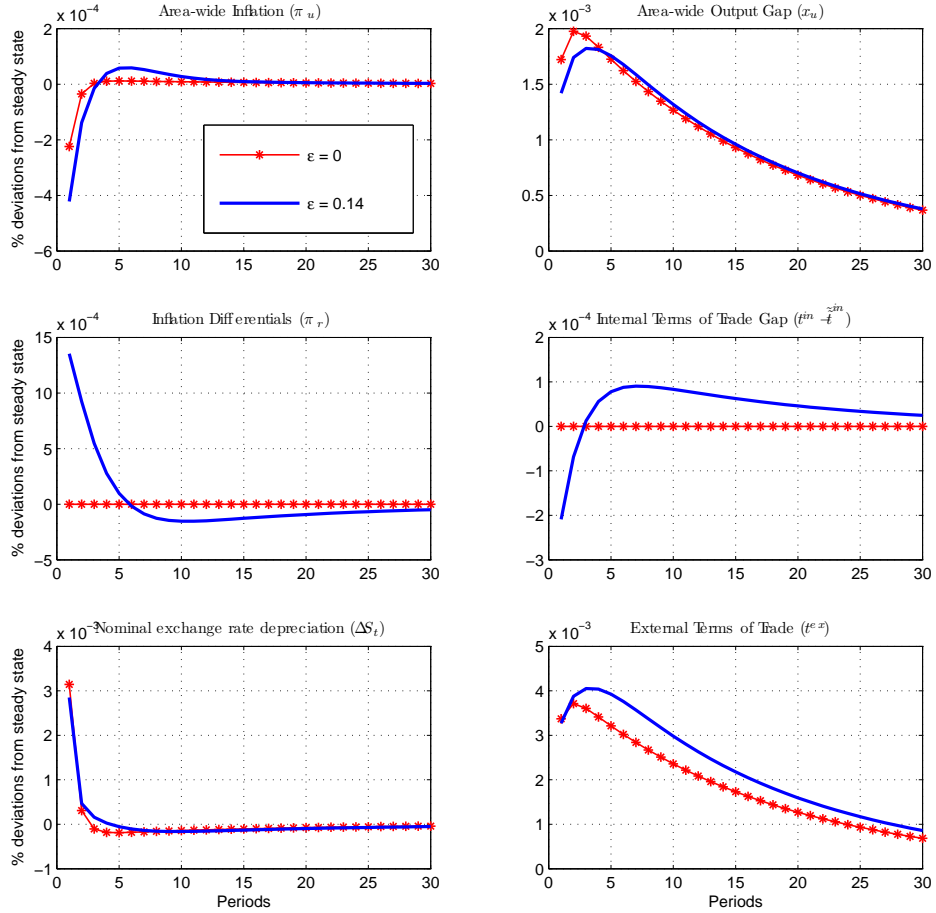
An area-wide technology shock increases the relative competitiveness of the currency area goods with respect to those produced in the rest of the world. The optimal policy accommodates this increase in competitiveness through a nominal exchange rate depreciation and an increase in the external terms of trade t_t^{ex} . Due to the external terms of trade externality, however, the social planner wants to partially dampen the response of the exchange rate, therefore the area-wide inflation is not perfectly stabilized after the shock. When regions are homogeneous, an area-wide shock affects all member countries of the area equally; thus the internal terms of trade gap and the inflation differential do not move.

When regions are open to different degrees toward the rest of the world, the more open region (region 2) benefits more from the gain in competitiveness as the rest of the world prefers its goods to the ones produced in the other region. Hence, in the flexible price equilibrium, the higher demand of good 2 leads to an increase in its relative price. In the sticky price equilibrium, the internal terms of trade gap cannot adjust immediately and a negative terms

³⁰Notice that in equation (24) $\Phi_{\pi_r} = m(1 - m)\Phi_{\pi_u}$. Thus, I could have written $\Phi_{\pi_u} [m\pi_{1,t}^2 + (1 - m)\pi_{2,t}^2]$ instead of $\Phi_{\pi_u}\pi_{u,t}^2 + \Phi_{\pi_r}\pi_{r,t}^2$.

³¹The equations that fully describe the optimal policy plan are specified in the appendix.

Figure 4: IRFs to a positive area-wide technology shock under the optimal policy



Notes: The shock is equal to 1% st dev of the area-wide technology. The starred line is the homogeneity case ($\epsilon = 0$); the solid line the heterogeneity one ($\epsilon = 0.14$).

of trade gap opens. This induces higher inflationary pressures in the more open region and therefore an increase in inflation differentials.

The optimal policy must balance the objective of stabilizing the area-wide output gap and inflation with the one of stabilizing the inflation dif-

ferentials and the internal terms of trade. It thus prefers to attenuate the depreciation of the nominal exchange rate relative to the homogeneous case since this depreciation would amplify the inflation differentials across regions. This implies that the area-wide inflation displays a larger volatility when regions are heterogeneous. The presence of heterogeneity, therefore, induces a stronger motive for exchange rate stabilization and goes against the complete stabilization of inflation.

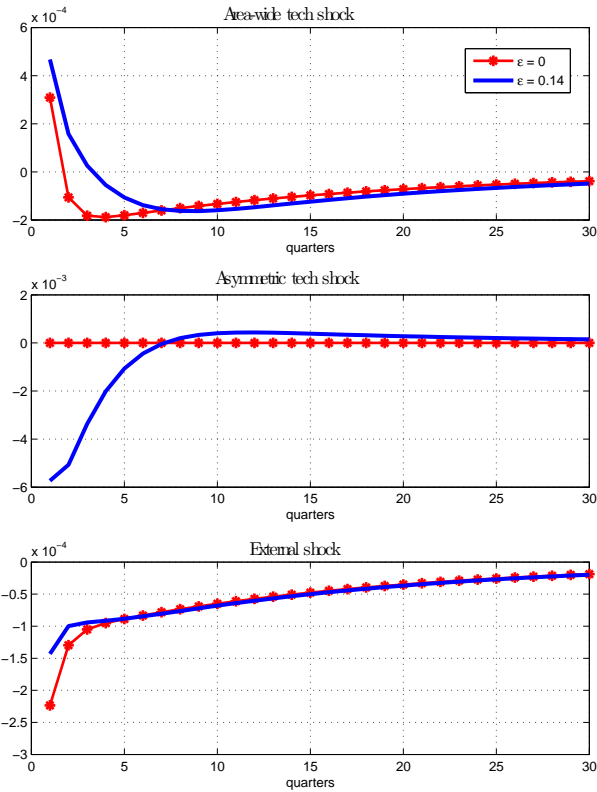
Figure 5 displays the responses of the nominal interest rate, following each of the shocks of the model, which is implied by the optimal policy plan. After a positive technology shock the nominal interest rate reacts more on impact when regions are heterogeneous than in the homogeneous case; afterward it decreases more sharply in the homogeneous case in order to allow for a stronger depreciation in the monetary union currency. The opposite happens when a shock coming from the rest of the world hits the currency area economy.

Figure 6 shows the responses of the main macroeconomic variables to an area-wide technology shock under a policy of strict inflation stabilization and under the optimal policy when regions are heterogeneous.³² In this case the complete stabilization of the area-wide inflation does not imply the stabilization of the welfare-relevant output gap. The heterogeneous transmission mechanism across regions induces fluctuations of the distance of the internal terms of trade from its efficient level, which in turn affect the relationship between area-wide inflation and the output gap as described by the New Keynesian Phillips curve. Compared to the optimal policy, a strict inflation targeting rule induces a stronger response of the nominal exchange rate of the currency area and generates higher inflation differentials. Both these variables are instead partially stabilized under the optimal policy.

Under the benchmark calibration, the relatively considerable weight on the inflation differentials in the objective of the currency area central bank induces the social planner to care about inflation differentials stabilization. However, it is the interaction between the area-wide and the difference block of the model introduced by the heterogeneity in the external openness that allows the central bank to affect them even if it controls only the area-wide interest rate. The optimal policy plan internalizes that with heterogeneity the transmission mechanism of monetary policy impulses differs across regions and makes active use of it in order to influence the differentials.

³²The strict inflation stabilization policy is described by the targeting rule $\pi_{u,t} = 0$.

Figure 5: The IRFs of the nominal interest rate under the optimal policy



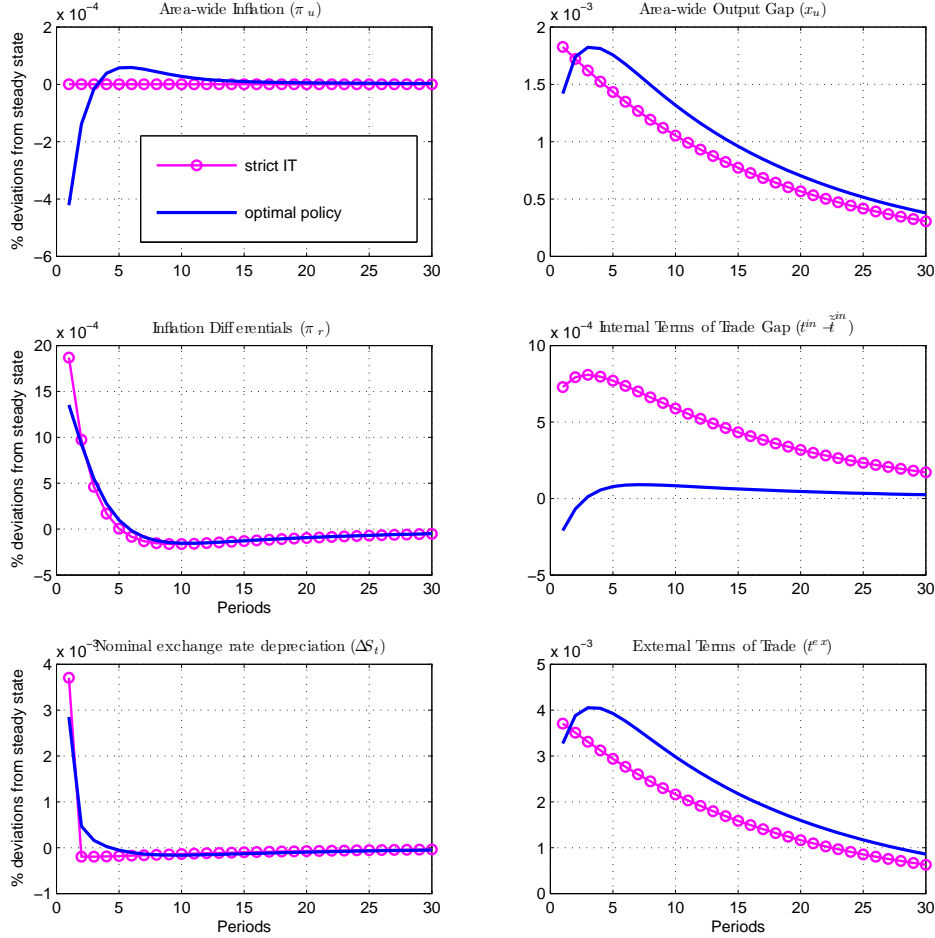
Notes: The starred line is the homogeneity case ($\varepsilon = 0$); the solid line the heterogeneity one ($\varepsilon = 0.14$).

5.4 The IRFs to an asymmetric technology shock under the optimal plan

Figure 7 displays the impulse response functions to an asymmetric technology shock ($a_{r,t}$). It can be interpreted as a shock in the efficiency level of the production of one good of the currency area relative to the other. In particular, a positive variation of $a_{r,t}$ implies a gain in competitiveness in the more open region (region 2) relative to the more closed one (region 1).

Following the shock, a positive internal terms of trade gap opens because the presence of price stickiness implies that the relative price across regions

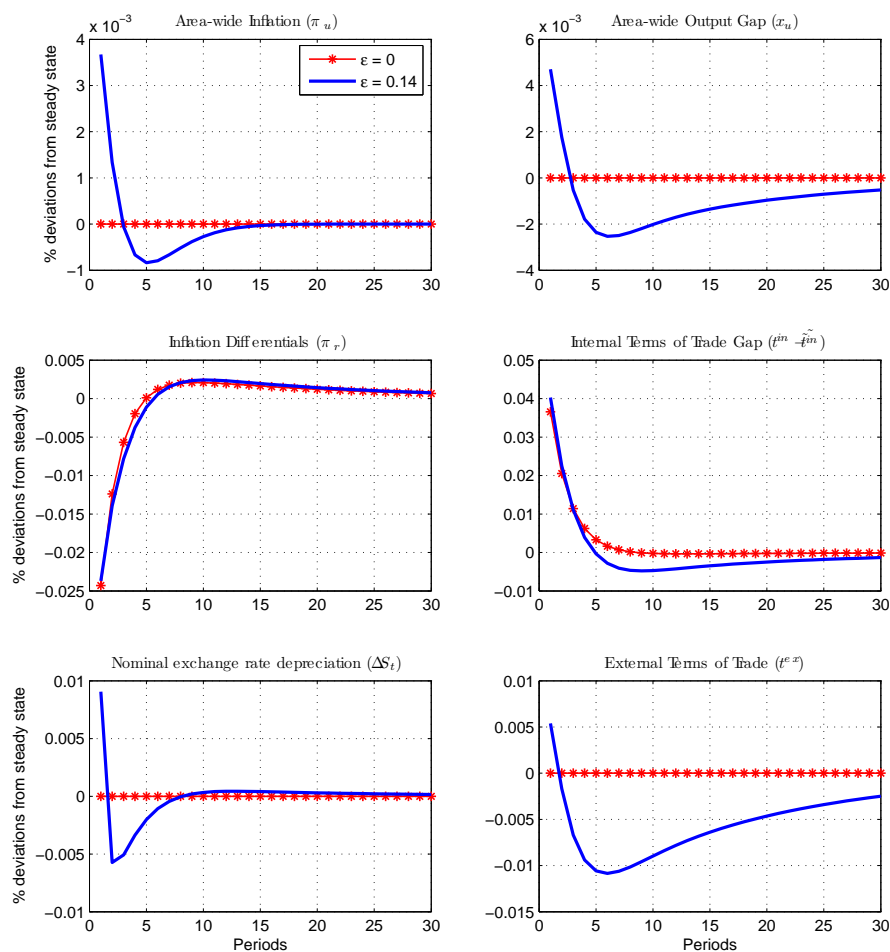
Figure 6: The IRFs to a positive area-wide technology shock under different policy regimes



Notes: The IRFs are obtained for a calibration of $\varepsilon = 0.14$ under the optimal policy (solid line) and the strict inflation targeting (IT) regime (starred line)

does not adjust immediately. This gap affects the inflation differentials: inflation is higher in region 1 because the distortion in the relative price caused by the stickiness inefficiently boosts the demand of good 1.

Figure 7: The IRFs to an asymmetric technology shock under the optimal policy plan



Notes: The asymmetric shock is an exogenous increase in the relative productivity of the more open region; the starred line is the homogeneity case ($\epsilon = 0$); the solid line the heterogeneity one ($\epsilon = 0.14$).

When the regions are homogenous, the area-wide variables are not affected by the shock and only the relative prices and quantities adjust. The differential block of the model is disconnected from the area-wide one and

monetary policy, having as the only instrument the currency union nominal interest rate, cannot undo the distortion in the internal terms of trade generated by nominal rigidities. When, instead, $\varepsilon \neq 0$ the area-wide inflation and output gap are affected. Since sizable inflation differentials generate welfare losses, the central bank raises the output gap under the optimal policy in order to partially mitigate the inflation differentials (see equation (21)). This in turn affects the area-wide inflation that it is slightly increasing after the shock.

5.5 The effect of the size of the regions

One of the common features of the more open block of countries of the EMU is that they are smaller in size compared to the less open block. It is thus of interest to analyze how the size of the two regions affects the results.

Figure 8: The effect of region size on the inflation response to a technology shock in the optimal policy

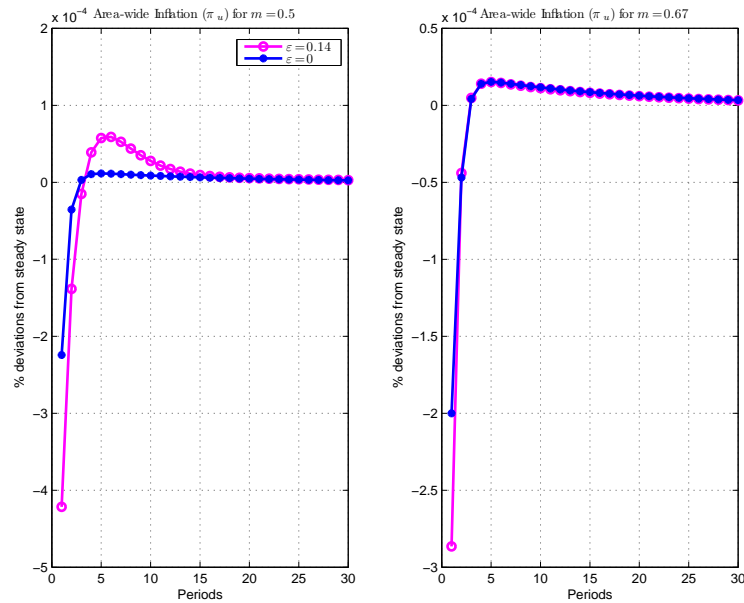


Figure 8 displays the optimal response of the area-wide inflation to a

positive 1% standard deviation of the area-wide technology shock when the regions have the same size (left panel) and when the size of region 2, the one that is more open to the rest of the world, is one third of the total size of the currency area (right panel).

When the regions are the same size, the response of inflation in an economy with heterogeneous degrees of external openness (i.e. $\varepsilon = 0.14$) is almost twice as strong as that in the region with homogeneous degrees of openness. When instead region 2 is smaller than region 1, the decrease of inflation on impact is about 40% stronger when $\varepsilon = 0.14$ than in the homogeneity case.

6 Conclusions

The degree of external openness is an important element that shapes the transmission mechanism of global shocks in the EMU countries. Evidence shows that the member countries differ in this respect.

The paper highlights the effects of heterogeneity on external trade openness among the regions of a currency area in the optimal design of monetary policy. It builds a framework for an open currency area economy composed of two regions that have different preferences toward the goods produced by the rest of the world outside the currency area. After obtaining a welfare measure that is consistent with the model and microfounded, the optimal monetary policy from the currency area viewpoint is derived.

When the currency area regions have different degrees of external openness, both the transmission mechanism of the shocks and the microfounded welfare function differ from the baseline case of a homogeneous currency area. Heterogeneity in external trade generates a stronger motive for exchange rate stabilization in the optimal policy plan. Accordingly, more inflation volatility is advisable. For example, after a positive area-wide technology shock the central bank should not accommodate the shock perfectly and should decrease the nominal interest rate by less than what is predicted by the optimal policy for a homogeneous currency area. In this way the union nominal exchange rate depreciation is lower and the inflation differentials, generated by the different exposure of the two regions toward the rest of the world, are partially alleviated.

The results of the paper suggest that some degree of heterogeneity across regions is sufficient for the cross-region dispersion to influence the area-wide

variables dynamics and to be of importance for welfare. The optimal monetary policy plan takes into account the structural differences across regions and balances the welfare losses coming from area-wide inflation and the output gap with those coming from the inflation differentials.

References

- [1] Andrès, Javier, Eva Ortega and Javier Vallès (2008), “Competition and Inflation Differentials in EMU”, *Journal of Economic Dynamics and Control*, **32**(3), 848-874.
- [2] Angeloni, Ignazio and Michael Ehrmann (2004), “Euro Area Inflation Differentials”, ECB Working Paper No. 388.
- [3] Aoki, Kosuke (2001), “Optimal Monetary Policy Responses to Relative Prices Changes”, *Journal of Monetary Economics*, **48**, 55-80.
- [4] Baldwin, Richard (2006), “The euro’s trade effects ”, ECB Working Paper No. 594.
- [5] Benigno, Pierpaolo (2004), “Optimal Monetary Policy in a Currency Area”, *Journal of International Economy*, **63** (2), 293-320.
- [6] Benigno, Pierpaolo, and Lopez-Salido, David, (2006), ”Inflation Persistence and Optimal Monetary Policy in the Euro Area”, *Journal of Money Credit and Banking*, **38**(3), p. 587-614.
- [7] Benigno, Pierpaolo and Michael Woodford (2006), “Linear-Quadratic Approximation of Optimal Policy Problems”, NBER Working Paper No. 12672
- [8] Carlstrom, Charles T., Timothy S. Fuerst, Fabio Ghironi and Kolver Hernandez (2006) “Relative Price Dynamics and the Aggregate Economy”, mimeo Boston College.
- [9] Clarida, Richard, Jordi Galí and Mark Gertler (2001), “Optimal Monetary Policy in Open vs Closed Economies: An Integrated Approach”, *American Economic Review*, **91** (2), 248-252.

- [10] Corsetti, Giancarlo and Paolo Pesenti (2001), “Welfare and Macroeconomic Interdependence”, *Quarterly Journal of Economics*, **116**(2), p. 421-445.
- [11] De Paoli, Bianca (2009), “Monetary Policy and Welfare in a Small Open Economy”, *Journal of International Economics*, **77**, p. 11-22.
- [12] ECB (2003), “Inflation Differentials in the Euro Area: Potential Causes and Policy Implications ”, www.ecb.int
- [13] Fagan, Gabriel, Jerome Henry and Ricardo Mestre (2001), “An Area-Wide Model (AWM) for the Euro Area ”, ECB Working Paper No. 42
- [14] Faia, Ester and Tommaso Monacelli (2008), “Optimal Monetary Policy in a Small Open Economy with Home Bias”, *Journal of Money, Credit and Banking* **40**, 721-750.
- [15] Ferrero, Andrea (2009), “Fiscal and Monetary Rules for a Currency Union ”, *Journal of International Economics*, **77**, p. 1-10.
- [16] Frankel, Jeffrey (2008), “The Estimated Effects of Euro on Trade: Why are They Below Historical Evidence on Effects of Monetary Unions Among Smaller Countries? ”, NBER Working Paper No. 14542.
- [17] Galí, Jordi and Tommaso Monacelli (2005), “Monetary Policy and Exchange Rate Volatility in a Small Open Economy”, *Review of Economic Studies*, **72**, 707-735.
- [18] Galí, Jordi and Tommaso Monacelli (2008), “Optimal Monetary and Fiscal Policy in a Monetary Union”, *Journal of International Economics* **76**, 116-132.
- [19] Honohan, Patrick and Philip R. Lane (2003), “Divergent Inflation Rates in EMU”, *Economic Policy*, **37**, 359-94.
- [20] Honohan, Patrick and Philip R. Lane (2004), “Exchange Rates and Inflation under EMU: An Update ”, IIIS Discussion Papers No. 31.
- [21] Lane, Philip (2001), “The New Open Economy Macroeconomics: A Survey”, *Journal of International Economics*, **54**, 235-266.

- [22] Micco, Alejandro, Ernesto Stein and Guillermo Ordonez (2003) “The Currency Union Effect on Trade: Early Evidence from EMU ”, *Economic Policy*, **18**(37), p. 315-356.
- [23] Rabanal, Pau (2009) “Inflation Differentials Between Spain and the EMU: A DSGE Perspective”, *Journal of Money, Credit, and Banking*, **41**(2), p. 1141-1166.
- [24] Smets, Frank and Raf Wouters (2005) “Comparing shocks and frictions in US and euro area business cycles: a Bayesian DSGE Approach”, *Journal of Applied Econometrics*, **20**(2), p. 161-183.
- [25] Woodford, Michael (2003), *Interest and Prices*, Princeton University Press.

Appendix

A The (Sum and Difference) Solution of the Model

In this appendix I derive in detail the solution of the model in terms of area-wide and differentials variables (that is the equations described in Section 3.4). I consider the case in which the two regions of the currency area have equal size (i.e. $m = 0.5$). I loglinearized the model around the trade-balanced deterministic steady state. For a generic variable x I define the area-wide corresponding variable as $x_u \equiv mx_1 + (1 - m)x_2$ and the differentials as $x_r \equiv x_2 - x_1$. As specified above, I assume that the rest of the world is a large country relative to the currency area (specifically, the amount of goods produced in the currency area and consumed by the rest of the world is negligible in its basket of consumption, thus one can say $C^{row} = Y_{row}$).

A.1 Derivation of equation (16)

Consider first the aggregate demand of goods produced in region 1 (equation (15))

$$Y_{1,t} = (1 - \alpha - \omega + \varepsilon) \left(\frac{P_{1,t}}{P_{1,t}^c} \right)^{-1} C_t^1 + \alpha \left(\frac{P_{1,t}}{P_{2,t}^c} \right)^{-1} C_t^2 + (\omega - \varepsilon) \left(\frac{P_{1,t}}{P_{row,t}^c S_t} \right)^{-1} C_t^{row}.$$

Using the risk sharing conditions (11) to substitute for the consumption of region 2 and of the rest of the world, I obtain

$$Y_{1,t} = \left(\frac{P_{1,t}}{P_{1,t}^c} \right)^{-1} C_t^1 \left[(1 - \alpha - \omega + \varepsilon) + \alpha \left(\frac{P_{1,t}^c}{P_{2,t}^c} \right)^{\frac{1}{\sigma} - 1} + (\omega - \varepsilon) \left(\frac{P_{1,t}^c}{P_{row,t}^c S_t} \right)^{\frac{1}{\sigma} - 1} \right].$$

Loglinearizing around the steady state I obtain

$$y_{1,t} = \left[\alpha + \frac{1}{2}(\omega - \varepsilon) \right] t_t^{in} + (\omega - \varepsilon) t_t^{ex} + c_t^1 + \frac{\sigma - 1}{\sigma} \left[\alpha q_t^{in} + (\omega - \varepsilon) q_t^{ex} \right] \quad (25)$$

where I used the following definitions for the internal and external terms of trade and real exchange rates

$$t^{in} = p_2 - p_1$$

$$\begin{aligned}
t^{ex} &= p_{row} + s - p_u \\
q^{in} &= p_2^c - p_1^c \\
q^{ex} &= p_{row}^c + s - p_u^c.
\end{aligned}$$

Using (6) and (7) I derived the (log linearized) relationships between the (internal and external) terms of trade and the real exchange rates

$$q_t^{in} = (1 - 2\alpha - \omega)t_t^{in} + 2\varepsilon t_t^{ex} \quad (26)$$

$$q_t^{ex} = \frac{\varepsilon}{2}t_t^{in} + (1 - \omega)t_t^{ex}. \quad (27)$$

Substituting (26) and (27) into the aggregate demand of goods produced in region 1 I have

$$y_{1,t} = \left[\alpha\Phi + \frac{1}{2}(\omega - \varepsilon)\Gamma_1 \right] t_t^{in} + (\omega - \varepsilon)\Gamma_1 t_t^{ex} + c_t^1. \quad (28)$$

Analogously, the aggregate demand for goods produced in region 2 is

$$y_{2,t} = - \left[\alpha\Phi + \frac{1}{2}(\omega + \varepsilon)\Gamma_2 \right] t_t^{in} + (\omega + \varepsilon)\Gamma_2 t_t^{ex} + c_t^2. \quad (29)$$

where

$$\begin{aligned}
\Phi &\equiv 1 + \frac{\sigma - 1}{\sigma} (1 - 2\alpha - 2\omega) \\
\Gamma_1 &\equiv 1 + \frac{\sigma - 1}{\sigma} \left(\frac{2\alpha\varepsilon}{\omega - \varepsilon} + 1 - \omega + \varepsilon \right) \\
\Gamma_2 &\equiv 1 + \frac{\sigma - 1}{\sigma} \left(1 - \omega - \varepsilon - \frac{2\alpha\varepsilon}{\omega + \varepsilon} \right).
\end{aligned}$$

Notice that when $\varepsilon = 0$, $\Gamma_1 = \Gamma_2 = 1 + \frac{\sigma-1}{\sigma}(1 - \omega)$. When the utility is logarithmic (i.e. $\sigma = 1$), $\Gamma_1 = \Gamma_2 = \Phi = 1$. Aggregating over the regions of the currency area, the aggregate demand of the currency area goods is

$$y_{u,t} = \frac{1}{4}[(\omega - \varepsilon)\Gamma_1 - (\omega + \varepsilon)\Gamma_2]t_t^{in} + \frac{1}{2}[(\omega - \varepsilon)\Gamma_1 + (\omega + \varepsilon)\Gamma_2]t_t^{ex} + c_t^u \quad (30)$$

Using (11), the following risk sharing condition between the currency area and the rest of the world holds

$$C_t^u = (Q_t^{ex})^{1/\sigma} C_t^{row}.$$

Loglinearizing and using (26) and (27), one obtains

$$c_t^u = \frac{1}{\sigma} \left[(1 - \omega)t_t^{ex} + \frac{\varepsilon}{2}t_t^{in} \right] + c_t^{row} \quad (31)$$

which, substituted into (30), yields to equation (16) of the text

$$y_{u,t} = \frac{1}{\sigma_\omega}t_t^{ex} + y_{row,t} - \sigma_\varepsilon t_t^{in}$$

where

$$\begin{aligned} \sigma_\omega^{-1} &= \frac{1}{2} \left[(\omega - \varepsilon)\Gamma_1 + (\omega + \varepsilon)\Gamma_2 + \frac{2(1 - \omega)}{\sigma} \right] \\ \sigma_\varepsilon &= \frac{1}{4} \left[(\omega + \varepsilon)\Gamma_2 - (\omega - \varepsilon)\Gamma_1 + \frac{2\varepsilon}{\sigma} \right]. \end{aligned}$$

When $\sigma = 1$ (i.e. log utility in consumption) the parameter σ_ω is equal to one and σ_ε is equal to zero independently of ε ³³.

A.2 Derivation of equation (17)

From the labor market clearing condition (14) for both regions of the currency area using the production function and the definition of the internal and external terms of trade, I obtain the following log linear expressions for the real marginal costs in region 1 and 2

$$rmc_{1,t} = -\nu + \sigma c_t^1 + \varphi y_{1,t} + \left[\alpha + \frac{1}{2}(\omega - \varepsilon) \right] t_t^{in} + (\omega - \varepsilon)t_t^{ex} - (1 + \varphi)a_{1,t} \quad (32)$$

$$rmc_{2,t} = -\nu + \sigma c_t^2 + \varphi y_{2,t} - \left[\alpha + \frac{1}{2}(\omega + \varepsilon) \right] t_t^{in} + (\omega + \varepsilon)t_t^{ex} - (1 + \varphi)a_{2,t}. \quad (33)$$

Aggregating over the regions of the currency area the area-wide real marginal costs are

$$rmc_{u,t} = -\nu + \sigma c_t^u + \varphi y_{u,t} - \frac{\varepsilon}{2}t_t^{in} + \omega t_t^{ex} - (1 + \varphi)a_{u,t}.$$

Using the risk sharing condition (31) and substituting t_t^{ex} using (16), I obtain equation (17) of the text, that is

$$rmc_{u,t} = -\nu + (\sigma_\omega + \varphi)y_{u,t} + (\sigma - \sigma_\omega)y_{row,t} + \sigma_\omega \sigma_\varepsilon t_t^{in} - (1 + \varphi)a_{u,t}$$

³³This is the special case in which an open economy is isomorphic to a closed economy. See Clarida et al. (2001).

A.3 Derivation of equation (20)

From the intertemporal first order conditions of the households living in the currency area I have the following (area-wide) Euler equation

$$c_t^u = E_t c_{t+1}^u - \frac{1}{\sigma} (r_t - E_t \pi_{u,t+1}^c).$$

Using (6) and (7) and the definition of the terms of trade, the following is the relationship between the CPI and the PPI inflation in the currency area

$$\pi_{u,t}^c = \pi_{u,t} + \omega \Delta t_t^{ex} - \frac{\varepsilon}{2} \Delta t_t^{in}.$$

Substituting the last expression and (30) into the area-wide Euler equation above, I have

$$y_{u,t} = E_t y_{u,t+1} + \sigma_\varepsilon E_t \Delta t_{t+1}^{in} - \Theta E_t \Delta t_{t+1}^{ex} - \frac{1}{\sigma} (r_t - E_t \pi_{u,t+1}),$$

where $\Theta \equiv \frac{1}{2} [(\omega - \varepsilon)\Gamma_1 + (\omega + \varepsilon)\Gamma_2 - \frac{2\omega}{\sigma}]$. Using equation (16) to substitute for t_t^{ex} and rearranging the terms, I obtain

$$y_{u,t} = E_t y_{u,t+1} + \sigma_\varepsilon E_t \Delta t_{t+1}^{in} - \frac{1}{\sigma_\omega} (r_t - E_t \pi_{u,t+1}) + \Theta \sigma E_t \Delta y_{row,t+1}$$

Adding and subtracting the natural rate of the currency area output (18) and rearranging terms, I can rewrite the IS equation in terms of the output gap and the real interest rate gap as in equation (20), that is

$$x_{u,t} = E_t x_{u,t+1} + \sigma_\varepsilon E_t \Delta (t_{t+1}^{in} - \tilde{t}_{t+1}^{in}) - \frac{1}{\sigma_\omega} (r_t - E_t \pi_{u,t+1} - \tilde{r}_{u,t}).$$

The natural rate of the real interest rate is defined as

$$\tilde{r}_{u,t} \equiv \phi_{y^*} E_t \Delta y_{t+1}^* + \phi_{tin} E_t \Delta \tilde{t}_{t+1}^{in} + \phi_{a_u} E_t \Delta a_{u,t+1}$$

where the coefficients are defined as

$$\begin{aligned} \phi_{y_{row}} &\equiv \sigma_\omega \left(\Theta \sigma - \frac{\sigma - \sigma_\omega}{\sigma_\omega + \varphi} \right) \\ \phi_{tin} &\equiv + \frac{\sigma_\omega \sigma_\varepsilon \varphi}{\sigma_\omega + \varphi} \\ \phi_{a_u} &\equiv \frac{\sigma_\omega (1 + \varphi)}{\sigma_\omega + \varphi}. \end{aligned}$$

A.4 Derivation of equation (21) and (22)

In order to obtain the equation that describes the dynamics of the inflation differentials between the two regions of the currency area, I derive the real marginal costs differentials. Subtracting (32) from (33) I have the differentials of real marginal costs

$$rmc_{r,t} = \sigma c_t^r + \varphi y_{r,t} - (2\alpha + \omega) t_t^{in} + 2\varepsilon t_t^{ex} - (1 + \varphi) a_{r,t}. \quad (34)$$

Subtracting (28) from (29), I have the following expression for the differentials of output in the two regions

$$y_{r,t} = - \left[2\alpha\Phi + \frac{1}{2}(\omega + \varepsilon)\Gamma_2 + \frac{1}{2}(\omega - \varepsilon)\Gamma_1 \right] t_t^{in} + [(\omega + \varepsilon)\Gamma_2 - (\omega - \varepsilon)\Gamma_1] t_t^{ex} + c_{r,t}.$$

The risk sharing condition (11) together with (26) and (27) implies that

$$c_t^r = -\frac{1}{\sigma}(1 - 2\alpha - \omega)t_t^{in} - \frac{2\varepsilon}{\sigma}t_t^{ex}.$$

Combining the last two equations with (34), I obtain

$$rmc_{r,t} = \xi_{in} t_t^{in} + \xi_{ex} t_t^{ex} - (1 + \varphi) a_{r,t},$$

where

$$\begin{aligned} \xi_{in} &\equiv -\frac{\sigma + \varphi}{\sigma}(1 - 2\alpha - \omega) - \varphi \left[2\alpha\Phi + \frac{1}{2}(\omega + \varepsilon)\Gamma_2 + \frac{1}{2}(\omega - \varepsilon)\Gamma_1 \right] - (2\alpha + \omega) \\ \xi_{ex} &\equiv -\frac{\sigma + \varphi}{\sigma}2\varepsilon + \varphi [(\omega + \varepsilon)\Gamma_2 - (\omega - \varepsilon)\Gamma_1] + 2\varepsilon. \end{aligned}$$

Notice that when $\varepsilon = 0$, $\xi_{ex} = 0$ implying that the external competitiveness of the currency area toward the rest of the world is not affecting the real marginal cost differentials inside the union. Substituting t_t^{ex} using equation (16), I have

$$rmc_{r,t} = (\xi_{in} + \xi_{ex}\sigma_\omega\sigma_\varepsilon) t_t^{in} + \xi_{ex}\sigma_\omega y_{u,t} - \xi_{ex}\sigma_\omega y_{row,t} - (1 + \varphi) a_{r,t} \quad (35)$$

In the flexible price equilibrium the real marginal costs are equal to the opposite of the mark up in both regions. Since the monopolistic distortion is assumed to be the same across regions of the currency area, the differential of the real marginal costs is equal to zero when prices are fully flexible. Making

use of this fact, by setting equation (35) equal to zero I obtain the expression for the internal terms of trade that is in (22), that is

$$\tilde{t}_t^{in} = \gamma_{y_{row}} y_{row,t} + \gamma_{a_u} a_{u,t} - \gamma_{a_r} a_{r,t}$$

where

$$\begin{aligned} \gamma_{y_{row}} &\equiv \frac{\xi_{ex} \sigma_\omega (\sigma + \varphi)}{\xi_{in} (\sigma_\omega + \varphi) + \varphi \xi_{ex} \sigma_\omega \sigma_\varepsilon} \\ \gamma_{a_u} &\equiv -\frac{(1 + \varphi) \xi_{ex} \sigma_\omega}{\xi_{in} (\sigma_\omega + \varphi) + \xi_{ex} \varphi \sigma_\omega \sigma_\varepsilon} \\ \gamma_{a_r} &\equiv \frac{(1 + \varphi) (\sigma_\omega + \varphi)}{\xi_{in} (\sigma_\omega + \varphi) + \xi_{ex} \varphi \sigma_\omega \sigma_\varepsilon}. \end{aligned}$$

The New Keynesian Phillips curve for the inflation differentials is given by

$$\pi_{r,t} = \beta E_t \pi_{r,t+1} + \lambda r m c_{r,t}.$$

Thus, using (35) and (22), I obtain equation (21) of the text.

B Derivation of the approximated welfare loss function

The utility of the representative agent in each region i of the currency area is the following

$$U(C_t^i, N_t^i) \equiv \frac{(C_t^i)^{1-\sigma}}{1-\sigma} - \frac{(N_t^i)^{1+\varphi}}{1+\varphi}$$

Taking a second order Taylor expansion around the optimal steady state I have

$$\begin{aligned} W_{i,t} = & E_0 \sum_{t=0}^{\infty} \beta^t \left\{ \bar{C}_i^{1-\sigma} \left[c_{i,t} + \frac{(1-\sigma)}{2} c_{i,t}^2 \right] - \bar{N}_i^{1+\varphi} \left[y_{i,t} + z_{i,t} + \frac{(1+\varphi)}{2} y_{i,t}^2 \right] \right\} + \\ & + t.i.p. + o(\|\xi\|^3) \end{aligned}$$

where in *t.i.p.* are collected all terms that are independent from the monetary policy and in $o(\|\xi\|^3)$ the terms that are of order higher than two. To substitute for the hours worked $n_{i,t}$ I used the production function aggregated

for all varieties produced in the same country. That is, in log linear terms,
 $y_{i,t} = n_{i,t} + a_{i,t} - z_{i,t}$.

I define the welfare function for the whole currency area as the weighted average of the welfare measures in the two regions. The weights are given by the size of each region. Among the possible aggregation function, the specification of an utilitarian social welfare function is the one that gives less weight to the heterogeneity across regions. The welfare in the two regions are aggregated using, according to which the utility flows of the two regions are aggregated using a linear function. Thus

$$W_{u,t} \equiv mW_{1,t} + (1 - m)W_{2,t}$$

For now I am assuming that the two regions have equal size ($m = 0.5$).

Gali and Monacelli (2005) showed that $z_{i,t} = \frac{\theta}{2} var_j(\pi_{i,t}) = \frac{\theta}{2\lambda} \pi_{i,t}^2$. Using this result, the currency area approximated welfare function can be rewritten as follows³⁴

$$W_{u,t} = \bar{C}^{1-\sigma} E_0 \sum_{t=0}^{\infty} \beta^t \left[w'_y y_t - \frac{1}{2} y'_t W_y y_t - y'_t W_{\xi} \xi_t - \frac{1}{2} \pi'_t W_{\pi} \pi_t \right] + t.i.p. + o(\|\xi\|^3) \quad (36)$$

where

$$y'_t = [y_{u,t} \quad c_{u,t} \quad t_t^{in} \quad t_t^{ex} \quad q_t^{in} \quad q_t^{ex} \quad y_{r,t} \quad c_{r,t}]$$

$$\xi'_t = [y_{row,t} \quad a_{u,t} \quad a_{r,t}]$$

$$\pi'_t = [\pi_{u,t} \quad \pi_{r,t}]$$

$$\mathbf{w}'_y = \left[-\frac{1}{\Phi} \quad 1 \quad 0 \quad 0 \quad 0 \quad 0 \quad 0 \quad 0 \right]$$

$$\mathbf{W}_y = \begin{bmatrix} \frac{(1+\varphi)}{\Phi} & 0 & 0 & 0 & 0 & 0 & 0 & 0 \\ 0 & (1-\sigma) & 0 & 0 & 0 & 0 & 0 & 0 \\ 0 & 0 & 0 & 0 & 0 & 0 & 0 & 0 \\ 0 & 0 & 0 & 0 & 0 & 0 & 0 & 0 \\ 0 & 0 & 0 & 0 & 0 & 0 & 0 & 0 \\ 0 & 0 & 0 & 0 & 0 & 0 & \frac{(1+\varphi)}{\Phi} m(1-m) & 0 \\ 0 & 0 & 0 & 0 & 0 & 0 & 0 & (1-\sigma)m(1-m) \end{bmatrix}$$

³⁴A bar on a variable indicates that it is at the steady state level. I define $\Phi \equiv \frac{\bar{N}^{1+\varphi}}{\bar{C}^{1-\sigma}}$ such that $(1 - \Phi)\bar{Y}$ is the output distorted steady state.

$$\mathbf{W}_\xi = \begin{bmatrix} 0 & 0 & 0 \\ 0 & 0 & 0 \\ 0 & 0 & 0 \\ 0 & 0 & 0 \\ 0 & 0 & 0 \\ 0 & 0 & 0 \\ 0 & 0 & 0 \\ 0 & 0 & 0 \end{bmatrix}$$

$$\mathbf{W}_\pi = \begin{bmatrix} \frac{\theta}{\lambda\Phi} & 0 \\ 0 & m(1-m)\frac{\theta}{\lambda\Phi} \end{bmatrix}$$

In order to get the appropriate welfare approximation I need to eliminate the linear terms $w'_y y_t$ in the second order approximation (36). Following Benigno and Woodford (2006), I can do it using the second order Taylor expansion of some of the equilibrium conditions of the model. I consider the following equilibrium conditions: **a)** The aggregate demand of goods produced in the currency area (i.e. the weighted average of equations (15) for $i, j = 1, 2$ and $i \neq j$); **b)** The relative demand of goods produced in the two regions of the currency area (i.e. the difference between (15) when $i = 2$ and $i = 1$); **c)** The risk sharing condition between the currency area and the rest of the world (i.e. $C_{u,t} = (Q_t^{ex})^{\frac{1}{\sigma}} C_{row,t}$); **d)** The risk sharing condition between the regions inside the currency area (i.e. $C_{r,t} = (Q_t^{in})^{-\frac{1}{\sigma}}$); **e)** The definition of the real exchange rate of the currency area with the rest of the world (i.e. $Q_t^{ex} = (T_t^{ex})^{1-\omega} (T_t^{in})^{\frac{\omega}{2}}$); **f)** The definition of the real exchange rate between the regions of the currency area (i.e. $Q_t^{in} = (T_t^{in})^{1-2\alpha-\omega} (T_t^{ex})^{2\epsilon}$); **g)** The labor market clearing condition aggregated for all regions in the currency area (i.e. the weighted average of (14) for $i = 1, 2$); **h)** The labor market clearing condition in differences between regions in the currency area (i.e. the difference between (14) when $i = 2$ and when $i = 1$).

a) Demand of area-wide goods:

$$\sum_{t=0}^{\infty} \beta^t [a'_y y_t + \frac{1}{2} y'_t A_y y_t - y'_t A_\xi \xi_t] + o(\|\xi\|^3) = 0 \quad (37)$$

$$\mathbf{a}'_y = \begin{bmatrix} -1 & 1 & -\frac{\epsilon}{2} & \omega - \frac{\epsilon(\sigma-1)}{2\sigma} & \omega \frac{(\sigma-1)}{\sigma} & 0 & 0 \end{bmatrix}$$

$$\mathbf{A}_y = \begin{bmatrix} 0 & 0 & 0 & 0 & 0 & 0 & 0 & 0 \\ 0 & 0 & 0 & 0 & 0 & 0 & 0 & 0 \\ 0 & 0 & 0 & 0 & 0 & 0 & 0 & 0 \\ 0 & 0 & 0 & 0 & 0 & 0 & 0 & 0 \\ 0 & 0 & 0 & 0 & x_{5,5} & x_{5,6} & 0 & 0 \\ 0 & 0 & 0 & 0 & x_{6,5} & x_{6,6} & 0 & 0 \\ 0 & 0 & 0 & 0 & 0 & 0 & 0 & 0 \\ 0 & 0 & 0 & 0 & 0 & 0 & 0 & 0 \end{bmatrix}$$

where

$$\begin{aligned} x_{5,5} &= -\frac{1(\sigma-1)^2}{4\sigma^2} (4\alpha^2 + \omega^2 + \varepsilon^2 + 4\alpha\omega - \omega - \alpha) + \frac{\varepsilon}{2}(\sigma-1) \\ x_{5,6} = x_{6,5} &= \frac{1(\sigma-1)^2}{2\sigma^2} \varepsilon(-1 + 2\alpha + 2\omega) \\ x_{6,6} &= -\frac{(\sigma-1)^2}{\sigma^2} (\omega^2 + \varepsilon^2) - \frac{(\sigma-1)}{\sigma^2} \omega \end{aligned}$$

$$\mathbf{A}_\xi = 0$$

b) Demand differentials:

$$\sum_{t=0}^{\infty} \beta^t [b'_y y_t + \frac{1}{2} y'_t B_y y_t - y'_t B_\xi \xi_t] + o(\|\xi\|^3) = 0 \quad (38)$$

$$\mathbf{b}'_y = \left[0 \quad 0 \quad -2\alpha - \omega \quad 2\varepsilon \quad \frac{(\sigma-1)}{\sigma}(2\alpha + \omega) \quad 2\frac{(\sigma-1)}{\sigma}\varepsilon \quad -1 \quad 1 \right]$$

$$\mathbf{B}_y = \begin{bmatrix} 0 & 0 & 0 & 0 & 0 & 0 & 0 & 0 & 0 \\ 0 & 0 & 0 & 0 & 0 & 0 & 0 & 0 & 0 \\ 0 & 0 & 0 & 0 & 0 & 0 & 0 & 0 & 0 \\ 0 & 0 & 0 & 0 & 0 & 0 & 0 & 0 & 0 \\ 0 & 0 & 0 & 0 & -\frac{1}{2}\frac{(\sigma-1)^2}{\sigma^2}\varepsilon(4\alpha + 2\omega - 1) & \frac{(\sigma-1)^2}{\sigma^2}(-\omega + 2\alpha\omega + \omega^2 + \varepsilon^2) & 0 & 0 & 0 \\ 0 & 0 & 0 & 0 & \frac{(\sigma-1)^2}{\sigma^2}(-\omega + 2\alpha\omega + \omega^2 + \varepsilon^2) & -\frac{(\sigma-1)^2}{\sigma^2}4\omega - \frac{2(\sigma-1)\varepsilon}{\sigma^2} & 0 & 0 & 0 \\ 0 & 0 & 0 & 0 & 0 & 0 & 0 & 0 & 0 \\ 0 & 0 & 0 & 0 & 0 & 0 & 0 & 0 & 0 \end{bmatrix}$$

$$\mathbf{B}_\xi = 0$$

c) **Risk sharing - Currency area vs rest of the world**

$$\sum_{t=0}^{\infty} \beta^t [c'_y y_t + \frac{1}{2} y'_t C_y y_t - y'_t C_\xi \xi_t] + o(\|\xi\|^3) = 0 \quad (39)$$

$$\mathbf{c}'_y = \left[0 \quad -1 \quad 0 \quad 0 \quad 0 \quad \frac{1}{\sigma} \quad 0 \quad 0 \right]$$

$$\mathbf{C}_y = 0$$

$$\mathbf{C}_\xi = 0$$

d) **Risk sharing - region 1 vs region 2 of the Currency area**

$$\sum_{t=0}^{\infty} \beta^t [d'_y y_t + \frac{1}{2} y'_t D_y y_t - y'_t D_\xi \xi_t] + o(\|\xi\|^3) = 0 \quad (40)$$

$$\mathbf{d}'_y = \left[0 \quad 0 \quad 0 \quad 0 \quad -\frac{1}{\sigma} \quad 0 \quad 0 \quad -1 \right]$$

$$\mathbf{D}_y = 0$$

$$\mathbf{D}_\xi = 0$$

e) **Real exchange rate definition - Extra currency area**

$$\sum_{t=0}^{\infty} \beta^t [e'_y y_t + \frac{1}{2} y'_t E_y y_t - y'_t E_\xi \xi_t] + o(\|\xi\|^3) = 0 \quad (41)$$

$$\mathbf{e}'_y = \left[0 \quad 0 \quad \frac{\varepsilon}{2} \quad (1 - \omega) \quad 0 \quad -1 \quad 0 \quad 0 \right]$$

$$\mathbf{E}_y = 0$$

$$\mathbf{E}_\xi = 0$$

f) **Real exchange rate definition - Intra currency area**

$$\sum_{t=0}^{\infty} \beta^t [f'_y y_t + \frac{1}{2} y'_t F_y y_t - y'_t F_\xi \xi_t] + o(\|\xi\|^3) = 0 \quad (42)$$

$$\mathbf{f}'_y = \begin{bmatrix} 0 & 0 & (1 - 2\alpha - \omega) & 2\varepsilon & -1 & 0 & 0 & 0 \end{bmatrix}$$

$$\mathbf{F}_y = 0$$

$$\mathbf{F}_\xi = 0$$

g) **Labor market clearing - aggregate currency area**

$$\sum_{t=0}^{\infty} \beta^t [g'_y y_t + \frac{1}{2} y'_t G_y y_t - y'_t G_\xi \xi_t] + o(\|\xi\|^3) = 0 \quad (43)$$

$$\mathbf{g}'_y = \begin{bmatrix} \varphi & \sigma & -\frac{\varepsilon}{2} & \omega & 0 & 0 & 0 & 0 \end{bmatrix}$$

$$\mathbf{G}_y = 0$$

$$\mathbf{G}_\xi = \begin{bmatrix} 0 & -(1 + \varphi)\varphi & 0 \\ 0 & 0 & 0 \\ 0 & 0 & 0 \\ 0 & 0 & 0 \\ 0 & 0 & 0 \\ 0 & 0 & 0 \\ 0 & 0 & 0 \\ 0 & 0 & 0 \end{bmatrix}$$

h) **Labor market clearing - differences between regions**

$$\sum_{t=0}^{\infty} \beta^t [h'_y y_t + \frac{1}{2} y'_t H_y y_t - y'_t H_\xi \xi_t] + o(\|\xi\|^3) = 0 \quad (44)$$

$$\mathbf{h}'_y = \begin{bmatrix} 0 & 0 & -2\alpha - \omega & 2\varepsilon & 0 & 0 & \varphi & \sigma \end{bmatrix}$$

$$\mathbf{H}_y = 0$$

$$\mathbf{H}_\xi = \begin{bmatrix} 0 & 0 & 0 \\ 0 & -(1 + \varphi)\varphi & 0 \\ 0 & 0 & 0 \\ 0 & 0 & 0 \\ 0 & 0 & 0 \\ 0 & 0 & 0 \\ 0 & 0 & 0 \\ 0 & 0 & 0 \end{bmatrix}$$

Eliminating the linear term in (36) implies finding the vector \mathbf{Lx} such that

$$\mathbf{w}_y = \begin{bmatrix} a_y & b_y & c_y & d_y & e_y & f_y & g_y & h_y \end{bmatrix} \mathbf{Lx}$$

where Lx has dimension 8 by 1.

I can therefore rewrite equation (36) as

$$E_0 \sum_{t=0}^{\infty} \beta^t \left[\frac{1}{2} y'_t L_y y_t + y'_t L_\xi \xi_t + \frac{1}{2} L_\pi \pi_t^2 \right] + t.i.p. + o(\|\xi\|^3) \quad (45)$$

where

$$\begin{aligned} L_y &= W_y + A_y Lx_1 + B_y Lx_2 \\ L_\xi &= W_\xi + G_\xi Lx_7 + H_\xi Lx_8 \\ L_\pi &= W_\pi \end{aligned}$$

In order to write the welfare in terms of the currency area output, the output differentials in the two regions, the internal and external terms of trade, the currency area inflation and the regions' inflation differentials, I construct the mapping N such that

$$y'_t = N[y_{u,t} \ y_{r,t} \ t_t^{in} \ t_t^{ex}] + N_\xi \xi'_t$$

where

$$\mathbf{N} = \begin{bmatrix} 1 & 0 & 0 & 0 \\ 0 & 0 & \frac{\varepsilon}{2\sigma} & \frac{(1-\omega)}{\sigma} \\ 0 & 0 & 1 & 0 \\ 0 & 0 & 0 & 1 \\ 0 & 0 & (1-2\alpha-\omega) & 2\varepsilon \\ 0 & 0 & \frac{\varepsilon}{2} & (1-\omega) \\ 0 & 1 & 0 & 0 \\ 0 & 0 & -\frac{(1-2\alpha-\omega)}{\sigma} & \frac{2\varepsilon}{\sigma} \end{bmatrix}$$

and

$$\mathbf{N}_\xi = \begin{bmatrix} 0 & 0 & 0 \\ 1 & 0 & 0 \\ 0 & 0 & 0 \\ 0 & 0 & 0 \\ 0 & 0 & 0 \\ 0 & 0 & 0 \\ 0 & 0 & 0 \\ 0 & 0 & 0 \end{bmatrix}$$

I can substitute for $y_{R,t}$ using the following mapping

$$\begin{bmatrix} y_{u,t} \\ y_{r,t} \\ t_t^{in} \\ t_t^{ex} \end{bmatrix} = \begin{bmatrix} 1 & 0 & 0 \\ 0 & \frac{1}{\varphi} \left[\left(1 - \frac{1}{\sigma}\right) (2\alpha + \omega) \sigma^{-1} \right] & -\frac{1}{\varphi} \left(1 - \frac{1}{\sigma}\right) 2\varepsilon \\ 0 & 1 & 0 \\ 0 & 0 & 1 \end{bmatrix} \begin{bmatrix} y_{u,t} & t_t^{in} & t_t^{ex} \end{bmatrix} + M_\xi \xi'_t$$

where

$$\mathbf{M}_\xi = \begin{bmatrix} 0 & 0 & 0 \\ 0 & 0 & -\frac{1+\varphi}{\phi} \\ 0 & 0 & 0 \\ 0 & 0 & 0 \end{bmatrix}.$$

In order to reduce further the number of variables, one can write

$$\begin{bmatrix} y_{u,t} \\ t_t^{in} \\ t_t^{ex} \end{bmatrix} = \mathbf{Q} \begin{bmatrix} y_{u,t} & t_t^{in} \end{bmatrix} + Q_\xi \xi'_t$$

where

$$\mathbf{Q} = \begin{bmatrix} 1 & 0 \\ 0 & 1 \\ \sigma_\omega & -\sigma_\omega \sigma_\varepsilon \end{bmatrix}$$

and

$$\mathbf{Q}_\xi = \begin{bmatrix} 0 & 0 & 0 \\ 0 & 0 & 0 \\ -\sigma_\omega & 0 & 0 \end{bmatrix}$$

The new coefficients are in the matrix $H = Q'M'N'L_yNMQ$ and $H_\xi = Q'M'N'L_y(NMQ_\xi + NM_\xi + N_\xi) + Q'M'N'L_\xi$. Thus, I can rewrite the loss function (45) as

$$L_{t_0}^u = E_{t_0} \sum_{t=t_0}^{\infty} \beta^t \left\{ \frac{1}{2} [y_{u,t} \ t_t^{in}] H [y_{u,t} \ t_t^{in}]' + [y_{u,t} \ t_t^{in}] H_\xi [y_{row,t} \ a_{u,t} \ a_{r,t}]' + \frac{1}{2} \pi_t' L_\pi \pi_t \right\} + t.i.p. + o(\|\xi\|^3)$$

The period loss function, written in terms of gap of the variables from their efficient level, is given by

$$L_t^u = \left\{ \Phi_{\pi_u} \pi_{u,t}^2 + \Phi_{x_u} (y_{u,t} - \tilde{y}_{u,t})^2 + \Phi_{t^{in}} (t_t^{in} - \tilde{t}_t^{in})^2 + \Phi_{\pi_r} \pi_{r,t}^2 + \Phi_{x_u, t^{in}} (y_{u,t} - \tilde{y}_{u,t}) (t_t^{in} - \tilde{t}_t^{in}) \right\} + t.i.p. + o(\|\xi\|^3)$$

where

$$\begin{aligned} \Phi_{x_u} &= H(1, 1) \\ \Phi_{t^{in}} &= H(2, 2) \\ \Phi_{x_u, t^{in}} &= [H(1, 2) + H(2, 1)] \\ \Phi_{\pi_u} &= W_\pi(1, 1) \\ \Phi_{\pi_r} &= W_\pi(2, 2) \end{aligned}$$

The efficient equilibrium level of the area-wide output and the internal terms of trade is given by the following equations

$$\begin{aligned} \tilde{y}_{u,t} &= \frac{1}{H(1, 1)} \left\{ \frac{1}{2} [H(1, 2) + H(2, 1)] \tilde{t}_t^{in} - H_\xi(1, 1) y_{row,t} - H_\xi(1, 2) a_{u,t} - H_\xi(1, 3) a_{r,t} \right\} \\ \tilde{t}_t^{in} &= \frac{1}{H(2, 2)} \left\{ \frac{1}{2} [H(1, 2) + H(2, 1)] \tilde{y}_{u,t} - H_\xi(2, 1) y_{row,t} - H_\xi(2, 2) a_{u,t} - H_\xi(2, 3) a_{r,t} \right\} \end{aligned}$$

In the special case of $\sigma = 1$ and $\varepsilon = 0$ the coefficients are the following

$$\begin{aligned}\Phi_{x_u} &= \frac{(1 + \varphi)}{\Phi} \\ \Phi_{t^{in}} &= m(1 - m) \frac{(1 + \varphi)}{\Phi} \\ \Phi_{x_u, t^{in}} &= 0\end{aligned}$$

These coefficients are equal to those of Galí and Monacelli (2005) with the exception of the internal terms of trade that is a result of aggregating the welfare functions of the two regions.

C The Optimal Policy Plan

The benevolent monetary authority of the currency area solves the following linear quadratic problem

$$\max E_0 \sum_{t=0}^{\infty} \beta^t L_t^u$$

subject to

$$\begin{aligned}\pi_{u,t} &= \beta E_t \pi_{u,t+1} + \kappa_x^u (y_{u,t} - \tilde{y}_{u,t}) + \kappa_T^u (t_t^{in} - \tilde{t}_t^{in}) - \kappa_x^u (\tilde{y}_{u,t} - \tilde{y}_{u,t}) - \kappa_T^u (\tilde{t}_t^{in} - \tilde{t}_t^{in}) \\ \pi_{r,t} &= \beta E_t \pi_{r,t+1} + \kappa_x^r (y_{u,t} - \tilde{y}_{u,t}) + \kappa_T^r (t_t^{in} - \tilde{t}_t^{in}) - \kappa_x^r (\tilde{y}_{u,t} - \tilde{y}_{u,t}) - \kappa_T^r (\tilde{t}_t^{in} - \tilde{t}_t^{in}) \\ t_t^{in} - \tilde{t}_t^{in} &= t_{t-1}^{in} - \tilde{t}_{t-1}^{in} + \pi_{r,t} - (\tilde{t}_t^{in} - \tilde{t}_{t-1}^{in})\end{aligned}$$

Calling $\lambda_{1,t}$, $\lambda_{2,t}$ and $\lambda_{3,t}$ the Lagrange multipliers associated with the three constraints above, the following are the first order conditions with respect to $\pi_{u,t}$, $\pi_{r,t}$, $x_{u,t}$ and $(t_t^{in} - \tilde{t}_t^{in})$ of the full commitment optimal policy problem.

$$\Phi_{\pi_u} \pi_{u,t} + \lambda_{1,t} - \lambda_{1,t-1} = 0 \quad (46)$$

$$\Phi_{x_u} (y_{u,t} - \tilde{y}_{u,t}) + \Phi_{x_u, t^{in}} (t_t^{in} - \tilde{t}_t^{in}) - \lambda_{1,t} \kappa_x^u - \lambda_{2,t} \kappa_x^r = 0 \quad (47)$$

$$\Phi_{\pi_r} \pi_{r,t} + \lambda_{2,t} - \lambda_{2,t-1} - \lambda_{3,t} = 0 \quad (48)$$

$$\Phi_{t^{in}} (t_t^{in} - \tilde{t}_t^{in}) + \Phi_{x_u, t^{in}} (y_{u,t} - \tilde{y}_{u,t}) - \lambda_{1,t} \kappa_T^u - \lambda_{2,t} \kappa_T^r + \lambda_{3,t} - \beta \lambda_{3,t+1} = 0 \quad (49)$$

Equations (46)-(49), the structural equations of the model (equations (19), (21) and (23)), i.e. the first order conditions with respect to the Lagrange multipliers, together with the stochastic processes specified for the three exogenous variables, $a_{u,t}$, $a_{r,t}$ and $y_{row,t}$, fully describe the dynamics of the currency area economy under the optimal policy plan.

RECENTLY PUBLISHED “TEMI” (*)

- N. 714 – *L'attività retail delle banche estere in Italia: effetti sull'offerta di credito alle famiglie e alle imprese*, by Luigi Infante and Paola Rossi (June 2009)
- N. 715 – *Firm heterogeneity and comparative advantage: the response of French firms to Turkey's entry in the European Customs Union*, by Ines Buono (June 2009).
- N. 716 – *The euro and firm restructuring*, by Matteo Bugamelli, Fabiano Schivardi and Roberta Zizza (June 2009).
- N. 717 – *When the highest bidder loses the auction: theory and evidence from public procurement*, by Francesco Decarolis (June 2009).
- N. 718 – *Innovation and productivity in SMEs. Empirical evidence for Italy*, by Bronwyn H. Hall, Francesca Lotti and Jacques Mairesse (June 2009).
- N. 719 – *Household wealth and entrepreneurship: is there a link?*, by Silvia Magri (June 2009).
- N. 720 – *The announcement of monetary policy intentions*, by Giuseppe Ferrero and Alessandro Secchi (September 2009).
- N. 721 – *Trust and regulation: addressing a cultural bias*, by Paolo Pinotti (September 2009).
- N. 722 – *The effects of privatization and consolidation on bank productivity: comparative evidence from Italy and Germany*, by E. Fiorentino, A. De Vincenzo, F. Heid, A. Karmann and M. Koetter (September 2009).
- N. 723 – *Comparing forecast accuracy: a Monte Carlo investigation*, by Fabio Busetti, Juri Marcucci and Giovanni Veronese (September 2009).
- N. 724 – *Nonlinear dynamics in welfare and the evolution of world inequality*, by Davide Fiaschi and Marzia Romanelli (October 2009).
- N. 725 – *How are firms' wages and prices linked: survey evidence in Europe*, by Martine Druant, Silvia Fabiani, Gabor Kezdi, Ana Lamo, Fernando Martins and Roberto Sabbatini (October 2009).
- N. 726 – *Low skilled immigration and the expansion of private schools*, by Davide Dottori and I-Ling Shen (October 2009).
- N. 727 – *Sorting, reputation and entry in a market for experts*, by Enrico Sette (October 2009).
- N. 728 – *Ricardian selection*, by Andrea Finicelli, Patrizio Pagano and Massimo Sbracia (October 2009).
- N. 729 – *Trade-revealed TFP*, by Andrea Finicelli, Patrizio Pagano and Massimo Sbracia (October 2009).
- N. 730 – *The riskiness of corporate bonds*, by Marco Taboga (October 2009).
- N. 731 – *The interbank market after august 2007: what has changed and why?*, by Paolo Angelini, Andrea Nobili and Maria Cristina Picillo (October 2009).
- N. 733 – *Dynamic macroeconomic effects of public capital: evidence from regional Italian data*, by Valter Di Giacinto, Giacinto Micucci and Pasqualino Montanaro (November 2009).
- N. 734 – *Networks with decreasing returns to linking*, by Filippo Vergara Caffarelli (November 2009).
- N. 735 – *Mutual guarantee institutions and small business finance*, by Francesco Columba, Leonardo Gambacorta and Paolo Emilio Mistrulli (November 2009).

(*) Requests for copies should be sent to:
Banca d'Italia – Servizio Studi di struttura economica e finanziaria – Divisione Biblioteca e Archivio storico – Via Nazionale, 91 – 00184 Rome – (fax 0039 06 47922059). They are available on the Internet www.bancaditalia.it.

2006

- F. Busetti, *Tests of seasonal integration and cointegration in multivariate unobserved component models*, Journal of Applied Econometrics, Vol. 21, 4, pp. 419-438, **TD No. 476 (June 2003)**.
- C. Biancotti, *A polarization of inequality? The distribution of national Gini coefficients 1970-1996*, Journal of Economic Inequality, Vol. 4, 1, pp. 1-32, **TD No. 487 (March 2004)**.
- L. Cannari and S. Chiri, *La bilancia dei pagamenti di parte corrente Nord-Sud (1998-2000)*, in L. Cannari, F. Panetta (a cura di), *Il sistema finanziario e il Mezzogiorno: squilibri strutturali e divari finanziari*, Bari, Cacucci, **TD No. 490 (March 2004)**.
- M. Bofondi and G. Gobbi, *Information barriers to entry into credit markets*, Review of Finance, Vol. 10, 1, pp. 39-67, **TD No. 509 (July 2004)**.
- W. Fuchs and Lippi F., *Monetary union with voluntary participation*, Review of Economic Studies, Vol. 73, pp. 437-457 **TD No. 512 (July 2004)**.
- E. Gaiotti and A. Secchi, *Is there a cost channel of monetary transmission? An investigation into the pricing behaviour of 2000 firms*, Journal of Money, Credit and Banking, Vol. 38, 8, pp. 2013-2038 **TD No. 525 (December 2004)**.
- A. Brandolini, P. Cipollone and E. Viviano, *Does the ILO definition capture all unemployment?*, Journal of the European Economic Association, Vol. 4, 1, pp. 153-179, **TD No. 529 (December 2004)**.
- A. Brandolini, L. Cannari, G. D'Alessio and I. Faiella, *Household wealth distribution in Italy in the 1990s*, in E. N. Wolff (ed.) *International Perspectives on Household Wealth*, Cheltenham, Edward Elgar, **TD No. 530 (December 2004)**.
- P. Del Giovane and R. Sabbatini, *Perceived and measured inflation after the launch of the Euro: Explaining the gap in Italy*, Giornale degli economisti e annali di economia, Vol. 65, 2, pp. 155-192, **TD No. 532 (December 2004)**.
- M. Caruso, *Monetary policy impulses, local output and the transmission mechanism*, Giornale degli economisti e annali di economia, Vol. 65, 1, pp. 1-30, **TD No. 537 (December 2004)**.
- L. Guiso and M. Paiella, *The role of risk aversion in predicting individual behavior*, In P. A. Chiappori e C. Gollier (eds.) *Competitive Failures in Insurance Markets: Theory and Policy Implications*, Monaco, CESifo, **TD No. 546 (February 2005)**.
- G. M. Tomat, *Prices product differentiation and quality measurement: A comparison between hedonic and matched model methods*, Research in Economics, Vol. 60, 1, pp. 54-68, **TD No. 547 (February 2005)**.
- L. Guiso, M. Paiella and I. Visco, *Do capital gains affect consumption? Estimates of wealth effects from Italian household's behavior*, in L. Klein (ed), *Long Run Growth and Short Run Stabilization: Essays in Memory of Albert Ando (1929-2002)*, Cheltenham, Elgar, **TD No. 555 (June 2005)**.
- F. Busetti, S. Fabiani and A. Harvey, *Convergence of prices and rates of inflation*, Oxford Bulletin of Economics and Statistics, Vol. 68, 1, pp. 863-878, **TD No. 575 (February 2006)**.
- M. Caruso, *Stock market fluctuations and money demand in Italy, 1913 - 2003*, Economic Notes, Vol. 35, 1, pp. 1-47, **TD No. 576 (February 2006)**.
- R. Bronzini and G. De Blasio, *Evaluating the impact of investment incentives: The case of Italy's Law 488/92*. Journal of Urban Economics, Vol. 60, 2, pp. 327-349, **TD No. 582 (March 2006)**.
- R. Bronzini and G. De Blasio, *Una valutazione degli incentivi pubblici agli investimenti*, Rivista Italiana degli Economisti, Vol. 11, 3, pp. 331-362, **TD No. 582 (March 2006)**.
- A. Di Cesare, *Do market-based indicators anticipate rating agencies? Evidence for international banks*, Economic Notes, Vol. 35, pp. 121-150, **TD No. 593 (May 2006)**.
- R. Golinelli and S. Momigliano, *Real-time determinants of fiscal policies in the euro area*, Journal of Policy Modeling, Vol. 28, 9, pp. 943-964, **TD No. 609 (December 2006)**.

- S. SIVIERO and D. TERLIZZESE, *Macroeconomic forecasting: Debunking a few old wives' tales*, Journal of Business Cycle Measurement and Analysis, v. 3, 3, pp. 287-316, **TD No. 395 (February 2001)**.
- S. MAGRI, *Italian households' debt: The participation to the debt market and the size of the loan*, Empirical Economics, v. 33, 3, pp. 401-426, **TD No. 454 (October 2002)**.
- L. CASOLARO and G. GOBBI, *Information technology and productivity changes in the banking industry*, Economic Notes, Vol. 36, 1, pp. 43-76, **TD No. 489 (March 2004)**.
- G. FERRERO, *Monetary policy, learning and the speed of convergence*, Journal of Economic Dynamics and Control, v. 31, 9, pp. 3006-3041, **TD No. 499 (June 2004)**.
- M. PAIELLA, *Does wealth affect consumption? Evidence for Italy*, Journal of Macroeconomics, Vol. 29, 1, pp. 189-205, **TD No. 510 (July 2004)**.
- F. LIPPI and S. NERI, *Information variables for monetary policy in a small structural model of the euro area*, Journal of Monetary Economics, Vol. 54, 4, pp. 1256-1270, **TD No. 511 (July 2004)**.
- A. ANZUINI and A. LEVY, *Monetary policy shocks in the new EU members: A VAR approach*, Applied Economics, Vol. 39, 9, pp. 1147-1161, **TD No. 514 (July 2004)**.
- D. JR. MARCHETTI and F. Nucci, *Pricing behavior and the response of hours to productivity shocks*, Journal of Money Credit and Banking, v. 39, 7, pp. 1587-1611, **TD No. 524 (December 2004)**.
- R. BRONZINI, *FDI Inflows, agglomeration and host country firms' size: Evidence from Italy*, Regional Studies, Vol. 41, 7, pp. 963-978, **TD No. 526 (December 2004)**.
- L. MONTEFORTE, *Aggregation bias in macro models: Does it matter for the euro area?*, Economic Modelling, 24, pp. 236-261, **TD No. 534 (December 2004)**.
- A. NOBILI, *Assessing the predictive power of financial spreads in the euro area: does parameters instability matter?*, Empirical Economics, Vol. 31, 1, pp. 177-195, **TD No. 544 (February 2005)**.
- A. DALMAZZO and G. DE BLASIO, *Production and consumption externalities of human capital: An empirical study for Italy*, Journal of Population Economics, Vol. 20, 2, pp. 359-382, **TD No. 554 (June 2005)**.
- M. BUGAMELLI and R. TEDESCHI, *Le strategie di prezzo delle imprese esportatrici italiane*, Politica Economica, v. 23, 3, pp. 321-350, **TD No. 563 (November 2005)**.
- L. GAMBACORTA and S. IANNOTTI, *Are there asymmetries in the response of bank interest rates to monetary shocks?*, Applied Economics, v. 39, 19, pp. 2503-2517, **TD No. 566 (November 2005)**.
- P. ANGELINI and F. LIPPI, *Did prices really soar after the euro cash changeover? Evidence from ATM withdrawals*, International Journal of Central Banking, Vol. 3, 4, pp. 1-22, **TD No. 581 (March 2006)**.
- A. LOCARNO, *Imperfect knowledge, adaptive learning and the bias against activist monetary policies*, International Journal of Central Banking, v. 3, 3, pp. 47-85, **TD No. 590 (May 2006)**.
- F. LOTTI and J. MARCUCCI, *Revisiting the empirical evidence on firms' money demand*, Journal of Economics and Business, Vol. 59, 1, pp. 51-73, **TD No. 595 (May 2006)**.
- P. CIPOLLONE and A. ROSOLIA, *Social interactions in high school: Lessons from an earthquake*, American Economic Review, Vol. 97, 3, pp. 948-965, **TD No. 596 (September 2006)**.
- L. DEDOLA and S. NERI, *What does a technology shock do? A VAR analysis with model-based sign restrictions*, Journal of Monetary Economics, Vol. 54, 2, pp. 512-549, **TD No. 607 (December 2006)**.
- F. VERGARA CAFFARELLI, *Merge and compete: strategic incentives for vertical integration*, Rivista di politica economica, v. 97, 9-10, serie 3, pp. 203-243, **TD No. 608 (December 2006)**.
- A. BRANDOLINI, *Measurement of income distribution in supranational entities: The case of the European Union*, in S. P. Jenkins e J. Micklewright (eds.), Inequality and Poverty Re-examined, Oxford, Oxford University Press, **TD No. 623 (April 2007)**.
- M. PAIELLA, *The foregone gains of incomplete portfolios*, Review of Financial Studies, Vol. 20, 5, pp. 1623-1646, **TD No. 625 (April 2007)**.
- K. BEHRENS, A. R. LAMORGESE, G.I.P. OTTAVIANO and T. TABUCHI, *Changes in transport and non transport costs: local vs. global impacts in a spatial network*, Regional Science and Urban Economics, Vol. 37, 6, pp. 625-648, **TD No. 628 (April 2007)**.
- M. BUGAMELLI, *Prezzi delle esportazioni, qualità dei prodotti e caratteristiche di impresa: analisi su un campione di imprese italiane*, v. 34, 3, pp. 71-103, Economia e Politica Industriale, **TD No. 634 (June 2007)**.
- G. ASCARI and T. ROPELE, *Optimal monetary policy under low trend inflation*, Journal of Monetary Economics, v. 54, 8, pp. 2568-2583, **TD No. 647 (November 2007)**.

- R. GIORDANO, S. MOMIGLIANO, S. NERI and R. PEROTTI, *The Effects of Fiscal Policy in Italy: Evidence from a VAR Model*, European Journal of Political Economy, Vol. 23, 3, pp. 707-733, **TD No. 656 (January 2008)**.
- B. ROFFIA and A. ZAGHINI, *Excess money growth and inflation dynamics*, International Finance, v. 10, 3, pp. 241-280, **TD No. 657 (January 2008)**.
- G. BARBIERI, P. CIPOLLONE and P. SESTITO, *Labour market for teachers: demographic characteristics and allocative mechanisms*, Giornale degli economisti e annali di economia, v. 66, 3, pp. 335-373, **TD No. 672 (June 2008)**.
- E. BREDA, R. CAPPARIELLO and R. ZIZZA, *Vertical specialisation in Europe: evidence from the import content of exports*, Rivista di politica economica, numero monografico, **TD No. 682 (August 2008)**.

2008

- P. ANGELINI, *Liquidity and announcement effects in the euro area*, Giornale degli Economisti e Annali di Economia, v. 67, 1, pp. 1-20, **TD No. 451 (October 2002)**.
- P. ANGELINI, P. DEL GIOVANE, S. SIVIERO and D. TERLIZZESE, *Monetary policy in a monetary union: What role for regional information?*, International Journal of Central Banking, v. 4, 3, pp. 1-28, **TD No. 457 (December 2002)**.
- F. SCHIVARDI and R. TORRINI, *Identifying the effects of firing restrictions through size-contingent Differences in regulation*, Labour Economics, v. 15, 3, pp. 482-511, **TD No. 504 (June 2004)**.
- L. GUIISO and M. PAIELLA, *Risk aversion, wealth and background risk*, Journal of the European Economic Association, v. 6, 6, pp. 1109-1150, **TD No. 483 (September 2003)**.
- C. BIANCOTTI, G. D'ALESSIO and A. NERI, *Measurement errors in the Bank of Italy's survey of household income and wealth*, Review of Income and Wealth, v. 54, 3, pp. 466-493, **TD No. 520 (October 2004)**.
- S. MOMIGLIANO, J. HENRY and P. HERNÁNDEZ DE COS, *The impact of government budget on prices: Evidence from macroeconomic models*, Journal of Policy Modelling, v. 30, 1, pp. 123-143 **TD No. 523 (October 2004)**.
- L. GAMBACORTA, *How do banks set interest rates?*, European Economic Review, v. 52, 5, pp. 792-819, **TD No. 542 (February 2005)**.
- P. ANGELINI and A. GENERALE, *On the evolution of firm size distributions*, American Economic Review, v. 98, 1, pp. 426-438, **TD No. 549 (June 2005)**.
- R. FELICI and M. PAGNINI, *Distance, bank heterogeneity and entry in local banking markets*, The Journal of Industrial Economics, v. 56, 3, pp. 500-534, **No. 557 (June 2005)**.
- S. DI ADDARIO and E. PATACCHINI, *Wages and the city. Evidence from Italy*, Labour Economics, v.15, 5, pp. 1040-1061, **TD No. 570 (January 2006)**.
- M. PERICOLI and M. TABOGA, *Canonical term-structure models with observable factors and the dynamics of bond risk premia*, Journal of Money, Credit and Banking, v. 40, 7, pp. 1471-88, **TD No. 580 (February 2006)**.
- E. VIVIANO, *Entry regulations and labour market outcomes. Evidence from the Italian retail trade sector*, Labour Economics, v. 15, 6, pp. 1200-1222, **TD No. 594 (May 2006)**.
- S. FEDERICO and G. A. MINERVA, *Outward FDI and local employment growth in Italy*, Review of World Economics, Journal of Money, Credit and Banking, v. 144, 2, pp. 295-324, **TD No. 613 (February 2007)**.
- F. Busetti and A. HARVEY, *Testing for trend*, Econometric Theory, v. 24, 1, pp. 72-87, **TD No. 614 (February 2007)**.
- V. CESTARI, P. DEL GIOVANE and C. ROSSI-ARNAUD, *Memory for prices and the Euro cash changeover: an analysis for cinema prices in Italy*, In P. Del Giovane e R. Sabbatini (eds.), The Euro Inflation and Consumers' Perceptions. Lessons from Italy, Berlin-Heidelberg, Springer, **TD No. 619 (February 2007)**.
- B. H. HALL, F. LOTTI and J. MAIRESSE, *Employment, innovation and productivity: evidence from Italian manufacturing microdata*, Industrial and Corporate Change, v. 17, 4, pp. 813-839, **TD No. 622 (April 2007)**.

- J. SOUSA and A. ZAGHINI, *Monetary policy shocks in the Euro Area and global liquidity spillovers*, International Journal of Finance and Economics, v.13, 3, pp. 205-218, **TD No. 629 (June 2007)**.
- M. DEL GATTO, GIANMARCO I. P. OTTAVIANO and M. PAGNINI, *Openness to trade and industry cost dispersion: Evidence from a panel of Italian firms*, Journal of Regional Science, v. 48, 1, pp. 97-129, **TD No. 635 (June 2007)**.
- P. DEL GIOVANE, S. FABIANI and R. SABBATINI, *What's behind "inflation perceptions"? A survey-based analysis of Italian consumers*, in P. Del Giovane e R. Sabbatini (eds.), *The Euro Inflation and Consumers' Perceptions. Lessons from Italy*, Berlin-Heidelberg, Springer, **TD No. 655 (January 2008)**.
- B. BORTOLOTTI, and P. PINOTTI, *Delayed privatization*, Public Choice, v. 136, 3-4, pp. 331-351, **TD No. 663 (April 2008)**.
- R. BONCI and F. COLUMBA, *Monetary policy effects: New evidence from the Italian flow of funds*, Applied Economics, v. 40, 21, pp. 2803-2818, **TD No. 678 (June 2008)**.
- M. CUCCULELLI, and G. MICUCCI, *Family Succession and firm performance: evidence from Italian family firms*, Journal of Corporate Finance, v. 14, 1, pp. 17-31, **TD No. 680 (June 2008)**.
- A. SILVESTRINI and D. VEREDAS, *Temporal aggregation of univariate and multivariate time series models: a survey*, Journal of Economic Surveys, v. 22, 3, pp. 458-497, **TD No. 685 (August 2008)**.

2009

- F. PANETTA, F. SCHIVARDI and M. SHUM, *Do mergers improve information? Evidence from the loan market*, Journal of Money, Credit, and Banking, v. 41, 4, pp. 673-709, **TD No. 521 (October 2004)**.
- P. PAGANO and M. PISANI, *Risk-adjusted forecasts of oil prices*, The B.E. Journal of Macroeconomics, v. 9, 1, Article 24, **TD No. 585 (March 2006)**.
- M. PERICOLI and M. SBRACIA, *The CAPM and the risk appetite index: theoretical differences, empirical similarities, and implementation problems*, International Finance, v. 12, 2, pp. 123-150, **TD No. 586 (March 2006)**.
- S. MAGRI, *The financing of small innovative firms: the Italian case*, Economics of Innovation and New Technology, v. 18, 2, pp. 181-204, **TD No. 640 (September 2007)**.
- S. MAGRI, *The financing of small entrepreneurs in Italy*, Annals of Finance, v. 5, 3-4, pp. 397-419, **TD No. 640 (September 2007)**.
- F. LORENZO, L. MONTEFORTE and L. SESSA, *The general equilibrium effects of fiscal policy: estimates for the euro area*, Journal of Public Economics, v. 93, 3-4, pp. 559-585, **TD No. 652 (November 2007)**.
- R. GOLINELLI and S. MOMIGLIANO, *The Cyclical Reaction of Fiscal Policies in the Euro Area. A Critical Survey of Empirical Research*, Fiscal Studies, v. 30, 1, pp. 39-72, **TD No. 654 (January 2008)**.
- P. DEL GIOVANE, S. FABIANI and R. SABBATINI, *What's behind "Inflation Perceptions"? A survey-based analysis of Italian consumers*, Giornale degli Economisti e Annali di Economia, v. 68, 1, pp. 25-52, **TD No. 655 (January 2008)**.
- F. MACCHERONI, M. MARINACCI, A. RUSTICHINI and M. TABOGA, *Portfolio selection with monotone mean-variance preferences*, Mathematical Finance, v. 19, 3, pp. 487-521, **TD No. 664 (April 2008)**.
- M. AFFINITO and M. PIAZZA, *What are borders made of? An analysis of barriers to European banking integration*, in P. Alessandrini, M. Fratianni and A. Zazzaro (eds.): *The Changing Geography of Banking and Finance*, Dordrecht Heidelberg London New York, Springer, **TD No. 666 (April 2008)**.
- L. ARCIERO, C. BIANCOTTI, L. D'AURIZIO and C. IMPENNA, *Exploring agent-based methods for the analysis of payment systems: A crisis model for StarLogo TNG*, Journal of Artificial Societies and Social Simulation, v. 12, 1, **TD No. 686 (August 2008)**.
- A. CALZA and A. ZAGHINI, *Nonlinearities in the dynamics of the euro area demand for M1*, Macroeconomic Dynamics, v. 13, 1, pp. 1-19, **TD No. 690 (September 2008)**.
- L. FRANCESCO and A. SECCHI, *Technological change and the households' demand for currency*, Journal of Monetary Economics, v. 56, 2, pp. 222-230, **TD No. 697 (December 2008)**.
- M. BUGAMELLI, F. SCHIVARDI and R. ZIZZA, *The euro and firm restructuring*, in A. Alesina e F. Giavazzi (eds): *Europe and the Euro*, Chicago, University of Chicago Press, **TD No. 716 (June 2009)**.
- B. HALL, F. LOTTI and J. MAIRESSE, *Innovation and productivity in SMEs: empirical evidence for Italy*, Small Business Economics, v. 33, 1, pp. 13-33, **TD No. 718 (June 2009)**.

FORTHCOMING

- L. MONTEFORTE and S. SIVIERO, *The Economic Consequences of Euro Area Modelling Shortcuts*, Applied Economics, **TD No. 458 (December 2002)**.
- M. BUGAMELLI and A. ROSOLIA, *Produttività e concorrenza estera*, Rivista di politica economica, **TD No. 578 (February 2006)**.
- G. DE BLASIO and G. NUZZO, *Historical traditions of civicness and local economic development*, Journal of Regional Science, **TD No. 591 (May 2006)**.
- R. BRONZINI and P. PISELLI, *Determinants of long-run regional productivity with geographical spillovers: the role of R&D, human capital and public infrastructure*, Regional Science and Urban Economics, **TD No. 597 (September 2006)**.
- E. IOSSA and G. PALUMBO, *Over-optimism and lender liability in the consumer credit market*, Oxford Economic Papers, **TD No. 598 (September 2006)**.
- U. ALBERTAZZI and L. GAMBACORTA, *Bank profitability and the business cycle*, Journal of Financial Stability, **TD No. 601 (September 2006)**.
- A. CIARLONE, P. PISELLI and G. TREBESCHI, *Emerging Markets' Spreads and Global Financial Conditions*, Journal of International Financial Markets, Institutions & Money, **TD No. 637 (June 2007)**.
- V. DI GIACINTO and G. MICUCCI, *The producer service sector in Italy: long-term growth and its local determinants*, Spatial Economic Analysis, **TD No. 643 (September 2007)**.
- Y. ALTUNBAS, L. GAMBACORTA and D. MARQUÉS, *Securitisation and the bank lending channel*, European Economic Review, **TD No. 653 (November 2007)**.
- F. BALASSONE, F. MAURA and S. ZOTTERI, *Cyclical asymmetry in fiscal variables in the EU*, Empirica, **TD No. 671 (June 2008)**.
- M. BUGAMELLI and F. PATERNÒ, *Output growth volatility and remittances*, Economica, **TD No. 673 (June 2008)**.
- M. IACOVIELLO and S. NERI, *Housing market spillovers: evidence from an estimated DSGE model*, American Economic Journal: Macroeconomics, **TD No. 659 (January 2008)**.
- A. ACCETTURO, *Agglomeration and growth: the effects of commuting costs*, Papers in Regional Science, **TD No. 688 (September 2008)**.
- L. FORNI, A. GERALI and M. PISANI, *Macroeconomic effects of greater competition in the service sector: the case of Italy*, Macroeconomic Dynamics, **TD No. 706 (March 2009)**.
- Y. ALTUNBAS, L. GAMBACORTA, and D. MARQUÉS-IBÁÑEZ, *Bank risk and monetary policy*, Journal of Financial Stability, **TD No. 712 (May 2009)**.