



BANCA D'ITALIA
EUROSISTEMA

Temi di discussione

(Working papers)

Immigration and crime: an empirical analysis

by Milo Bianchi, Paolo Buonanno and Paolo Pinotti

December 2008

Number

698

The purpose of the Temi di discussione series is to promote the circulation of working papers prepared within the Bank of Italy or presented in Bank seminars by outside economists with the aim of stimulating comments and suggestions.

The views expressed in the articles are those of the authors and do not involve the responsibility of the Bank.

Editorial Board: PATRIZIO PAGANO, ALFONSO ROSOLIA, UGO ALBERTAZZI, CLAUDIA BIANCOTTI, GIULIO NICOLETTI, PAOLO PINOTTI, ENRICO SETTE, MARCO TABOGA, PIETRO TOMMASINO, FABRIZIO VENDITTI.

Editorial Assistants: ROBERTO MARANO, NICOLETTA OLIVANTI.

IMMIGRATION AND CRIME: AN EMPIRICAL ANALYSIS

by Milo Bianchi^{*}, Paolo Buonanno^{**} and Paolo Pinotti^{***}

Abstract

In this paper we examine the empirical relationship between immigration and crime across Italian provinces during the period 1990-2003. Drawing on police data, we first document that the size of the immigrant population is positively correlated with the incidence of property crimes and with the overall crime rate. We then use instrumental variables based on migration towards other European countries to identify the causal impact of exogenous changes in the immigrant population of Italy. According to these estimates, immigration increases only the incidence of robberies and has no effect on all other types of crime. Since robberies represent a very small fraction of all criminal offences, the effect on the overall crime rate is not significantly different from zero.

JEL Classification: F22, J15, K42, R10.

Keywords: immigration, crime.

Contents

1. Introduction.....	3
2. Immigration and crime in Italy: measurement and characteristics.....	5
3. Panel analysis.....	7
4. Causality	8
5. Robustness	11
6. Conclusions.....	12
References	14
Appendix	17
Figures and tables.....	19

* Paris School of Economics

** Università di Bergamo.

*** Bank of Italy.

1 Introduction¹

Immigration is a contentious issue in all destination countries for at least two reasons. First, worker flows from countries characterized by a different composition of the labor force may have significant redistributive consequences for native population. Second, there are widespread concerns that immigrants increase crime rates. While the economic literature has devoted much attention to the first issue (Borjas, 1994; Friedberg and Hunt, 1995; Bauer and Zimmermann, 2002; Card, 2005) the second one has remained largely unexplored.

At the same time, citizens and policymakers in host countries seem more concerned about the impact of immigrants on crime. Figure 1 shows the results of the National Identity survey carried on in 1995 and 2003 by the International Social Survey Programme. It emerges clearly that the majority of population in OECD countries is worried that immigrants increase crime rates. In most cases this fraction is greater than that of people afraid of being displaced from the labor market. These perceptions may have far-reaching consequences for immigration policies (Bauer et al., 2000).

According to economic theories of crime (Becker, 1968; Ehrlich, 1973) immigrants and natives may have different propensities to commit crime because they face different legitimate earnings opportunities, different probabilities to be convicted and different costs of conviction. However, the direction of such effects is unclear. For example, immigrants may experience worse labor market conditions (LaLonde and Topel, 1991; Borjas, 1998) but higher costs of conviction (Butcher and Piehl, 2005). Hence, identifying the effect of immigration is ultimately an empirical issue. Somewhat surprisingly, however, there is little systematic evidence in this respect.

In this paper we estimate the causal effect of immigration on crime across Italian provinces during the period 1990-2003. For this purpose, we draw on police administrative records to document the patterns of criminal offenses, disaggregated along various typologies, and of immigration, both in its regular and irregular component.

As we discuss in the next Section, Italy displays several interesting features for our analysis. First, during the last few years Italy has experienced a considerable increase in migration pressures, mostly as a consequence of political turmoil in neighboring countries. Similarly to many other receiving countries, this phenomenon resulted in substantial concerns at the social and political level, mainly because of the alleged relationship between immigration and crime. Second, during our sample period Italian authorities have implemented several

¹We want to thank Giuseppe Casamassima of the Italian Ministry of Interior for the data on residence permits. We also thank Massimiliano Bratti, Matteo Cervellati, Antonio Ciccone, Federico Cingano, Francesco Drago, Giovanni Mastrobuoni, Ugo Melchionda, Franco Peracchi, Alfonso Rosolia, Enrico Sette, Andrea Tiseno and seminar participants at the Bank of Italy, CEIS Tor Vergata, Paris School of Economics, ESPE (London), NASM (Pittsburgh), FEMES (Singapore), EEA (Milan) and AIEL (Brescia) for many useful comments. All errors are our responsibility. Financial support from CEPREMAP and from Region Ile-de-France (Milo Bianchi) is gratefully acknowledged. The opinions expressed herein are those of the authors and do not necessarily represent those of the Bank of Italy.

massive regularizations of previously unofficial immigrants, which allow for an estimate of the irregular component of migration.

In Section 3 we start our econometric analysis with an OLS estimation in which we control extensively for other determinants of criminal activity, as well as for province- and year-specific unobserved heterogeneity. According to these estimates, a 1% increase in the total number of immigrants is associated with a 0.1% increase in the total number of criminal offenses. Once we distinguish among categories of crime, the effect seems particularly strong for property crimes, and in particular for robberies and thefts.

We go on in Section 4 by asking whether this evidence can be attributed to a causal effect of immigration on crime. Any interpretation in this sense must take into account that the location choice of immigrants within the destination country may respond to unobserved demand-pull factors that are also correlated with crime. As a result, OLS estimates may be biased.

In order to solve this problem, we exploit differences in the intensity of migration by origin country as a source of exogenous variation in the distribution of immigrants across Italian provinces. In particular, we use changes of immigrant population by nationality in the rest of Europe as an instrument for changes of immigrant population in Italy. Our identification strategy relies on the fact that the supply-push component of migration by nationality is common to flows toward all destination countries. At the same time, flows toward the rest of Europe are exogenous to demand-pull factors in Italian provinces. Variation across provinces of supply-driven shifts of immigrant population results from differences in the beginning-of-period distribution of immigrants by origin country. Indeed, first stage estimates confirm that our instrument provides a strongly statistically significant prediction of migration to Italy.

Once we take into account the endogeneity of immigrants' distribution across provinces, the estimated effect of immigration on neither total nor property crimes is significantly different from zero. Distinguishing among different types of property crime, the estimated coefficient is still statistically significant for robberies. However, the latter represent only a very minor fraction of all crimes in our sample, which explains why the effect on the total crime rate is not statistically significant.

In Section 5, we discuss the robustness of our results with respect to measurement error, spatial correlation and heterogeneity across different nationalities; Section 6 concludes.

Even though previous evidence on immigration and crime is very scant, there are some previous papers related to this work. Butcher and Piehl (1998b, 2005) find that current U.S. immigrants have lower incarceration rates than natives, while the pattern seems reversed for immigrants in the early 1900s (Moehling and Piehl, 2007). At the aggregate level, Butcher and Piehl (1998a) look at a sample of U.S. metropolitan areas over the 1980s and conclude that new immigrants inflows had no significant impact on crime rates.

2 Immigration and crime in Italy: measurement and characteristics

Immigration to Italy displays several interesting features for the purpose of our analysis. First, it is a very recent phenomenon, which basically started in the early 1980s and took off during the 1990s. The first law regulating the inflows of foreigners was approved in 1990, later amended in 1998 and 2002. Throughout this period, Italian migration policy has remained grounded on the residence permit, which allows the holder to stay legally in the country for a given period of time. We have drawn directly on police administrative records for recovering the number of valid residence permits by province and nationality during the period 1990-2003. These data serve as our measure of legal immigration.

Second, immigration has increased dramatically over this period. The number of residence permits rose by a factor of 5, from 436,000 in 1990 (less than 1% of total population) to over 2.2 millions in 2003 (4% of population). Such growth was significantly driven by push factors in neighboring countries, like the collapse of Soviet Union and the Balkan Wars (see Del Boca and Venturini, 2003). Overall, immigration from Eastern Europe grew at a rate of 537% during the period 1990-2003, as compared to 134% from Northern Africa and 170% from Asia. Accordingly, our estimating strategy will exploit such push factors to identify the causal effect of immigration on crime.

Third, during this period Italy implemented several regularizations, which offered irregular immigrants the possibility to obtain a residence permit. In particular, regularizations in 1995, 1998, and 2002 involved 246, 217 and 700 thousand individuals, respectively. For our purposes, regularizations are important as they provide snapshots of irregular migration. During these episodes, in fact, immigrants had clear incentives to report their irregular status. Hence, underreporting may be less serious and less correlated with other variables than in survey data and in apprehension statistics.²

Therefore, we obtained from police administrative records also the demands for regularization presented in 1995, 1998 and 2002. As it turns out, the distribution of regular and irregular immigrants are tightly related. In particular, the ratio of the two is very stable within provinces and (regularization) years. In order to see this, let $MIGR_{it}$ and IRR_{it} be the number of regular and irregular immigrants in province i and year t , respectively. Then, we predict the latter based on the OLS regression

$$\widehat{IRR}_{it} = \hat{\mu}_i MIGR_{it} + \hat{\mu}_t MIGR_{it} + \hat{\nu}_{it},$$

where $\hat{\mu}_i$ and $\hat{\mu}_t$ are province- and year-specific estimated coefficients, respectively, and $\hat{\nu}_{it}$ is the estimated residual. Figure 2 shows that the difference between IRR_{it} and \widehat{IRR}_{it} at the

²In any case, all these alternative measures of irregular migration are strongly correlated with each other, as we discuss further in Section 5.

province-year level is almost negligible. Actually, the variance of \hat{v}_{it} is less than 2% of total variance. It follows that

$$\frac{MIGR_{it}^*}{POP_{it}} = \frac{MIGR_{it}}{POP_{it}} + \frac{IRR_{it}}{POP_{it}} \approx (1 + \mu_i + \mu_t) \frac{MIGR_{it}}{POP_{it}},$$

where $MIGR_{it}^*$ and POP_{it} are total immigrants and population in each province-year, respectively. Taking logarithms on both sides delivers

$$migr_{it}^* = \mu_i + \mu_t + migr_{it} + v_{it}. \quad (1)$$

where $migr_{it}^*$ and $migr_{it}$ are, respectively, the logarithms of total and regular immigrants over population, and v_{it} is an error term. The OLS estimated coefficient of $migr_{it}$ is 0.92 ($R^2 = 99\%$), which confirms that (after controlling for province and year fixed effects) regular immigrants are approximately proportional to total immigrant population in each province-year. Since total immigrants would be unobserved out of regularization years, we will use the (log of) regular immigrants instead.

Turning to measures of criminal activity, we look at crimes reported by the police to the judiciary authority, which are published yearly by the Italian Statistics Institute (ISTAT). These data allow to distinguish among several types of criminal offenses: violent crimes, property crimes (robbery, common theft, car theft) and drug-related crimes. Availability of these data determined our sample period, 1990-2003. In 2004, in fact, a new national crime recording standard has been adopted, which implies a lack of comparability of data before and after that year (ISTAT, 2004, p.27).

In general, a major drawback of crime data is measurement error, caused for instance by under-reporting, heterogeneous law enforcement, and so on. Following a standard approach, we assume that, first, the number of reported crimes, $CRIME_{it}$, is proportional to the true (unobserved) number of committed crimes, $CRIME_{it}^*$; second, the constant of proportionality does not vary within provinces and years. It follows that

$$crime_{it}^* = \theta_i + \theta_t + crime_{it}, \quad (2)$$

where $crime_{it}^*$ and $crime_{it}$ are, respectively, the logarithms of actual and reported crimes over total population, and θ_i and θ_t are province and year fixed effects. Therefore, we will use $crime_{it}$ as a proxy for the true (unobserved) crime rate (Ehrlich, 1996; Levitt, 1996). Accordingly, *total*, *violent*, *property* and *drug* will denote the logarithms of reported crimes over total population for each category of criminal offenses.

At a first glance, criminal activity and immigration are not systematically correlated over time (see Figure 3). On the other hand, immigration appears to be positively associated with crime across provinces; in particular, both tend to be higher in the North (Figure 4). However, both variables could respond to other (omitted) factors. For instance, higher wealth

in Northern Italy could encourage both immigration and property crimes, which represent 83% of all criminal offenses in our sample. Therefore, in the next section we move beyond simple correlations and into multivariate econometric analysis.

3 Panel Analysis

Identifying the effect of migration on crime is complicated by the fact that both variables are simultaneously determined in equilibrium. To address this issue, we start by controlling for other variables that may affect both immigration and crime, along with province- and year-specific unobserved heterogeneity. We thus assembled annual observations for all 95 Italian provinces during the period 1990-2003.³

Our main estimating equation is

$$crime_{it} = \beta migr_{it} + \gamma' X_{it} + \phi_i + \phi_t + \varepsilon_{it}, \quad (3)$$

where $crime_{it}$ is the log of the crime rate reported by the police in province i during year t ; $migr_{it}$ is the log of immigrants over population; X_{it} is a set of control variables; finally, ϕ_i and ϕ_t are province- and year-specific unobserved fixed effect, while ε_{it} is an error term. We are mainly interested in identifying coefficient β .

The set of observables X_{it} comprises demographic, socioeconomic and politico-institutional determinants of crime.⁴ Demographic variables include the log of resident population in the province, pop . Since equation (3) includes province fixed effects, pop implicitly controls for population density, which is considered a key determinant of the level of criminal activity (Glaeser and Sacerdote, 1999). For the same reason, we control for the share of population living in cities with more than 100,000 inhabitants, $urban$. Finally, since young men are said to be more prone to engage in criminal activities than the rest of the population (Freeman, 1991; Levitt, 1998; Grogger, 1998), we add the percentage of men aged 15-39, $male1539$.

Turning to the socioeconomic variables, we include the (log of) real GDP per capita, gdp , and the unemployment rate, $unemp$. These factors proxy for the legitimate and illegitimate earning opportunities (Ehrlich, 1973; Raphael and Winter-Ember, 2001; Gould et al., 2002).

The probability of apprehension captures instead the expected costs of crime. As a proxy for such a probability, we use the $clear - up$ rate, defined as the ratio of crimes cleared up by the police over the total number of reported crimes, for each category of crime (Ehrlich, 1996). The political orientation of the local government may affect the amount of resources devoted to crime deterrence and at the same time immigration restrictions at the local level.⁵

³Italian provinces correspond to level 3 in the Eurostat classification (Nomenclature of Territorial Units for Statistics); they are comparable in size to U.S. counties. In 1995, 8 new provinces were created by secession. In order to keep our series consistent, we attribute their post-1995 data to the corresponding pre-1995 province.

⁴Freeman (1999), Eide et al. (2006) and Dills et al. (2008) review the empirical literature on the determinants of crime.

⁵The distribution of residence permits across provinces is decided on a yearly basis by the government in

We measure the ideology of the local government with the variable *partisan*, which takes higher values the more the local government leans toward the right of the political spectrum.

Finally, fixed effects control for other unobserved factors that do not vary within provinces or years, including constants μ 's and θ 's in equations (1) and (2), respectively.

All variables' detailed definitions and sources are presented in the Appendix. Table 1 shows some descriptive statistics and Table 2 reports the correlation matrix among all dependent and explanatory variables. The univariate correlation between the log of immigrants and crimes over population is positive for all types of crime.

OLS estimates on equation (3) are presented in Table 3 and suggest that the total crime rate is significantly correlated with the incidence of immigrants in the population. Such relationship is robust to controlling for other determinants of crime. According to these findings, a 1% increase in immigrant population is associated with a 0.1% increase of total crime.

Distinguishing among types of crime, the effect is driven by property crimes (while violent and drug-related crimes are unaffected by immigration). In order to better uncover this relationship, in Table 4 we disaggregate property crimes further. It turns out that immigration increases the incidence of robberies and thefts. Since the latter represent about 60% of total crimes in our sample, the relationship between immigration and property crimes may be the main channel through which immigrants increase the crime rate.

However, there could be several reasons why immigrant population is systematically correlated with property crimes, some of which may not be adequately captured by control variables. Therefore, identifying causality requires a source of exogenous variation in immigrant population, an issue that we tackle in the next Section.

4 Causality

Even after controlling for other determinants of crime and for fixed effects, the distribution of immigrant population across provinces could be correlated with the error term for at least two reasons. First, our set of controls could neglect some time-varying, possibly unobserved demand-pull factors that are also correlated with crime. For instance, improvements in labor market conditions that are not adequately captured by changes in official unemployment and income could increase immigration and decrease crime, which would bias OLS estimates downward. On the other hand, economic decline could attract immigrants to some areas (e.g. because of declining housing prices) where crime is on the rise, which would bias OLS estimates upward. Finally, changes in crime rates across provinces could have a direct effect on immigrants' location.

In order to take these concerns into account, we adopt a Two-Stage-Least-Squares (2SLS) approach that uses the (exogenous) supply-push component of migration by nationality as an

accordance with provincial authorities.

instrument for shifts in immigrants population across Italian provinces. Supply-push factors are all events in origin countries that increase the propensity of population to emigrate; examples include economic crises, political turmoil, wars and natural disasters (see, for instance, Card, 1990; Friedberg, 2001; Angrist and Kugler, 2003; Munshi, 2003; Saiz, 2007). Since these are both important in determining migration outflows and independent of regional differences within the host country, they have often been used as a source of exogenous variation in the distribution of immigrant population. In particular, several papers have constructed outcome-based measures of supply-push factors using total migration flows by nationality toward the destination country of interest.⁶

In principle, however, since new immigrants of a given nationality tend to settle into the same areas as previous immigrants from the same country (see e.g. Munshi, 2003; Jaeger, 2006; McKenzie and Rapoport, 2007), total flows by nationality could be still correlated with local demand-pull factors.⁷ For this reason, our instrument will be based on bilateral migration flows toward European countries other than Italy. Specifically, we first take within-province differences of equation (1) and decompose $\Delta migr_{it} = migr_{it} - migr_{it-1}$ as follows:

$$\Delta migr_{it} \approx \sum_n \omega_{it-1}^n \times \Delta \ln MIGR_{it}^n - \Delta pop_{it}, \quad (4)$$

where the superscript n denotes nationalities and $\omega_{it-1}^n = MIGR_{it-1}^n / MIGR_{it-1}$. The first term on the right-hand side is the sum of log-changes of immigrants from country n into destination province i , weighted at beginning-of-period nationality shares within each province. These depend on both supply-push factors in each origin country (which affect that nationality in all provinces) and demand-pull factors in each province (which affect all nationalities in that province). In order to exclude the latter, we substitute $\Delta \ln MIGR_{it}^n$ with the log-change of immigrants of nationality n in the rest of Europe, $\Delta \ln MIGR^n$.

Hence, we define the predicted log-change of immigrants over population in each province as

$$\widehat{\Delta migr}_{it} = \sum_n \omega_{it-1}^n \times \Delta \ln MIGR^n. \quad (5)$$

Since demand-pull factors in other European countries can be reasonably thought as exogenous to variation between Italian provinces, the correlation between $\Delta migr_{it}$ and $\widehat{\Delta migr}_{it}$ must be due solely to supply-push factors in origin countries.

To construct our instrument we use the log changes of immigrant population from 13 origin countries in 11 European countries using decennial census data in the host countries.⁸ Figure

⁶See, among others, Card (2001), Lewis (2005) and Ottaviano and Peri (2006).

⁷In the limit, if all immigrants from a given country moved to the same Italian province, it would be impossible to disentangle push and pull factors.

⁸Ideally, one would use total outflows from origin countries (possibly excluding inflows to Italy) as a measure of supply-push factors. Unfortunately, these data are generally not available. The destination countries for which we obtained census data are Austria, Belgium, Denmark, Finland, France, Greece, Netherlands, Norway, Spain, Sweden and Switzerland. Information on the stock of immigrants in those countries was

5 shows that the patterns of immigration toward the rest of Europe resemble those observed in Italy, which points at the importance of supply-push factors. Indeed, the univariate regression confirms that our instrument fits well the actual changes of immigrant population across provinces over the 1990s,

$$\Delta migr_{it} = 0.671 + 0.673 \widehat{\Delta migr}_{it}.$$

(0.094) (0.178)

where the numbers in parenthesis are the standard errors of the estimated coefficients. The F-statistic of the regression is equal to 14.24, which is above the lower bounds indicated by the literature on weak instruments (see Bound et al., 1995; Stock and Yogo, 2002).

Once equipped with this instrument for immigrant population, we turn to examine its effect on crime rates in the second stage. The results are reported in Tables 5 and 6. For the sake of comparability between OLS and 2SLS, in each table we also present OLS estimates on the cross section of log changes between 1991 and 2001.

While the OLS estimates on 10-years changes are broadly consistent with panel estimates using all years, the 2SLS estimates present significant differences. First, the effect of immigration on the total number of criminal offenses is smaller and not statistically significant anymore, and the same is true for property crimes. Once we distinguish among different typologies of property crimes (Table 6), immigration has no significant effect on thefts. On the other hand, the effect on robberies is still significant. Indeed, its magnitude is much greater than the OLS estimate. This finding may point at the existence of demand-pull factors (not captured by control variables) that have opposite effects on immigration and on the incidence of robberies.⁹

Overall, these results suggest that the causal effect of immigration on either violent, property or drug-related crimes is not significantly different from zero. Robberies are the only type of criminal activity that we found to be positively and significantly affected by immigration. According to our estimates, the incidence robberies varies approximately one-to-one (in percentage) with the ratio of immigrants over population. Yet, within our sample robberies represent only 1.8% and 1.5% of property and total crimes, respectively, which explains why the incidence of neither property nor total crimes is significantly related to immigration.

available for the following nationalities: Albania, Algeria, Brazil, China (excluding Hong Kong), Egypt, India, Morocco, Nigeria, Pakistan, Philippines, Romania, Tunisia, Former Yugoslavia. Overall, immigrants from these countries accounted for 48% and 56% of Italian residence permits in 1991 and 2001, respectively.

⁹An alternative explanation could be that OLS estimates suffer from attenuation bias due to measurement errors in immigrant population. However, if this was the reason, we should observe an analogous bias for all types of crime, which does not seem to be the case.

5 Robustness

Our findings may be subject to several caveats, the most significant of which concern the measurement of immigrant population. A first issue relates to its composition by nationality. In order to avoid arbitrary classifications, our measure includes all residence permits, regardless of immigrants' origin countries. On the other hand, most crime concerns are directed toward immigrants from developing countries. While it is beyond the scope of this paper to investigate the relationship between nationality and propensity to crime, one may wonder whether adopting this broader definition introduces error in the measurement of those immigrants that could be more at risk of committing crime.¹⁰ Therefore, we checked the robustness of our estimates to using only residence permits awarded to immigrants from developing countries, $migr_{it}^{dc}$. The results are presented in Tables 7 and 8, and are remarkably similar to those obtained using all residence permits.

Also, differences among nationalities could explain the differences between OLS and 2SLS estimates. The latter are based on a subset of nationalities (those for which we found Census data for other European countries). Therefore, if the excluded nationalities had higher propensity to crime than those included in the instrument, that would cause the observed drop in magnitude and significance from OLS to 2SLS (Imbens and Angrist, 1994). In order to check whether that is the case, we run again OLS regressions including in the measure of immigration only those nationalities included in the instrument. Results are reported in Tables 9 and are not significantly different from those in Tables 5 and 6. Hence, basing our instrument on a subset of nationalities does not drive the difference between 2SLS and OLS estimates.

Another issue relates to the dimension of irregular immigration in Italy. As discussed in Section 3, we used demands for regularization to infer the distribution of irregular immigrants, arguing that this approach minimizes under-reporting. In principle, however, one can not exclude that immigrants self-select into regularization, which would introduce measurement error into equation (1). In particular, if immigrants who are more at risk of committing crime are also less likely to apply for a regular permit, we would be understating immigrants exactly where they contribute the most to crime, which in turn would bias the coefficient of $migr$ downward.

For this reason, we looked also at apprehensions of irregular immigrants (as recorded by Ministero dell'Interno (2007)) which do not depend on self-selection. Indeed, after controlling for province- and year-specific constants (which are always included in our specifications) the log of apprehensions is positively and significantly related to the log of demands for regularization. In particular, the OLS estimated coefficient of the univariate regression is

¹⁰This measurement issue is particularly relevant for Italy. In our sample, about 85% of all immigrants from outside developing countries came from U.S. and Switzerland. These are very peculiar groups: the first includes mostly U.S. military servants, the second Swiss citizens that commute daily between Switzerland and Italy.

0.35, the t-ratio is 3.87 and the R^2 is 85%. Therefore, apprehension- and regularization-based measures of irregular immigration seem consistent with each other. At the same time, regularizations provide a more representative picture of the phenomenon.¹¹

In addition, the 2SLS approach adopted in Section 5 would attenuate any bias due to under-reporting of irregular immigrants. In fact, if both regular and irregular immigrants of the same nationality cluster into the same areas, then our instrument provides a measure for the predicted log-change of total immigrants that depends solely on geographic distribution and supply-push factors by nationality.

Finally, mobility across the borders of different provinces may give rise to spatial correlation in provincial crime data. In line with the literature on spatial econometrics and crime (Anselin, 1988; Gibbons, 2004; Zenou, 2003), we thus control for spatially lagged crime rates. These consist of weighted averages of crime rates in neighboring provinces. In particular, crime in province i is assumed to depend also on crime observed in any other province j , weighted by the inverse of the distance between their capital cities. The results, presented in Table 10, are consistent with those in our baseline specification. Hence, spatial correlation does not affect our results. This is probably due to the fact that provinces are rather large geographical areas, so that crime trips occur within rather than across provinces.

6 Conclusions

In this paper, we investigated the causal impact of immigration on crime across Italian provinces during the 1990s. According to our estimates, total criminal offenses as well as most types of crime are not related to the size of immigrant population once endogeneity is taken into account.

We view our contribution as a first step towards a better understanding of this relationship. There are several ways in which our analysis can be extended in search of more detailed mechanisms, and we sketch only a few here.

First, one can explore natives' response to an increase in immigration. Our result, in fact, could be due to the fact that immigrants and natives have similar propensities to commit crime and/or there is substitution between immigrants' and natives' crime.¹² Moving in this direction would require more detailed criminal statistics, which allow to distinguish the nationality of the offender.¹³

Second, we estimate the average effect of immigration conditional on its current composition. However, this effect is probably different for regular and irregular immigrants. Indeed, it would be extremely interesting to estimate separately the effect of the two. But while the

¹¹In 1995 there were less than 64,000 apprehensions and 260,000 demands for regularization; this ratio was 61,000 over 250,000 in 1998 and 106,000 over 700,000 in 2002

¹²Borjas et al. (2006) argues that recent immigrants have contributed to the criminal activity of native black males in the U.S. by displacing them from the labor market.

¹³However, these data are publicly available for Italy only since 2000 on.

strong correlation between the two is useful for recovering the variation in total immigrants using only the regular ones, it does not allow to disentangle their separate effects.

A better understanding of such mechanisms seems crucial also for policy prescriptions. In fact, any change in migration restrictions is likely to affect both the size and composition of immigrant population (Bianchi, 2007; Giordani and Ruta, 2008). Therefore, its effect may differ from the one estimated by keeping immigrants' composition constant. This effect has to be considered before arguing in favor or against tighter immigration restrictions.

References

- Angrist, J. D. and A. D. Kugler (2003). Protective or counter-productive? labour market institutions and the effect of immigration on eu natives. *Economic Journal* 113(488), 302–331.
- Anselin, L. (1988). *Spatial Econometrics: Methods and Models*. Dordrecht: Kluwer Academic Publishers.
- Bauer, T. K., M. Lofstrom, and K. F. Zimmermann (2000). Immigration policy, assimilation of immigrants and natives' sentiments towards immigrants: Evidence from 12 oecd-countries. IZA Discussion Papers 187, Institute for the Study of Labor (IZA).
- Bauer, T. K. and K. F. Zimmermann (Eds.) (2002). *The Economics of Migration. Volume I-IV*. Edward Elgar Publishing Ltd.
- Becker, G. S. (1968). Crime and punishment: An economic approach. *Journal of Political Economy* 76(2), 169–217.
- Benoit, K. and M. Laver (2006). *Party Policy in Modern Democracies*. London: Routledge.
- Bianchi, M. (2007). Immigration policy and self-selecting migrants. PSE Working Paper No. 2007-41.
- Borjas, G. J. (1994). The economics of immigration. *Journal of Economic Literature* 32(4), 1667–1717.
- Borjas, G. J. (1998). The economic progress of immigrants. NBER Working Paper No. 6506.
- Borjas, G. J., J. Grogger, and G. H. Hanson (2006). Immigration and african-american employment opportunities: The response of wages, employment, and incarceration to labor supply shocks. NBER Working Paper No. 12518.
- Bound, J., D. A. Jaeger, and R. M. Baker (1995). Problems with instrumental variables estimation when the correlation between the instruments and the endogeneous explanatory variable is weak. *Journal of the American Statistical Association*, 90(430), 443–450.
- Butcher, K. F. and A. M. Piehl (1998a). Cross-city evidence on the relationship between immigration and crime. *Journal of Policy Analysis and Management* 17(3), 457–493.
- Butcher, K. F. and A. M. Piehl (1998b). Recent immigrants: Unexpected implications for crime and incarceration. *Industrial and Labor Relations Review* 51(4), 654–679.
- Butcher, K. F. and A. M. Piehl (2005). Why are immigrants' incarceration rates so low? evidence on selective immigration, deterrence, and deportation. Federal Reserve Bank of Chicago WP-05-19.

- Card, D. (1990). The impact of the mariel boatlift on the miami labor market. *Industrial and Labor Relations Review* 43(2), 245–257.
- Card, D. (2001). Immigrant inflows, native outflows, and the local labor market impacts of higher immigration. *Journal of Labor Economics* 19(1), 22–64.
- Card, D. (2005). Is the new immigration really so bad? *Economic Journal* 115(507), 300–323.
- Del Boca, D. and A. Venturini (2003). Italian migration. IZA Discussion Paper No. 938.
- Dills, A. K., J. A. Miron, and G. Summers (2008). What do economists know about crime? NBER Working Paper No. 13759.
- Ehrlich, I. (1973). Participation in illegitimate activities: A theoretical and empirical investigation. *Journal of Political Economy* 81(3), 521–65.
- Ehrlich, I. (1996). Crime, punishment, and the market for offenses. *Journal of Economic Perspectives* 10(1), 43–67.
- Eide, E., P. H. Rubin, and J. M. Shepherd (2006). *Economics of Crime*. Now Publishers.
- Freeman, R. B. (1991). Crime and the employment of disadvantaged youths. NBER Working Paper No. 3875.
- Freeman, R. B. (1999). The economics of crime. In O. Ashenfelter and D. Card (Eds.), *Handbook of Labor Economics*, Chapter 52, pp. 3529–3571. Elsevier.
- Friedberg, R. M. (2001). The impact of mass migration on the israeli labor market. *Quarterly Journal of Economics* 116(4), 1373–1408.
- Friedberg, R. M. and J. Hunt (1995). The impact of immigrants on host country wages, employment and growth. *Journal of Economic Perspectives* 9(2), 23–44.
- Gibbons, S. (2004). The costs of urban property crime. *Economic Journal* 114(499), 441–463.
- Giordani, P. E. and M. Ruta (2008). Prejudice and immigration. Levine’s bibliography, UCLA Department of Economics.
- Glaeser, E. L. and B. Sacerdote (1999). Why is there more crime in cities? *Journal of Political Economy* 107(6), 225–229.
- Gould, E. D., B. A. Weinberg, and D. B. Mustard (2002). Crime rates and local labor market opportunities in the united states: 1979-1997. *Review of Economics and Statistics* 84(1), 45–61.
- Grogger, J. (1998). Market wages and youth crime. *Journal of Labor Economics* 16(4), 756–91.

- Imbens, G. W. and J. D. Angrist (1994). Identification and estimation of local average treatment effects. *Econometrica* 62(2), 467–75.
- ISTAT (2004). Statistiche giudiziarie penali. Technical report, Italian Statistics Institute.
- Jaeger, D. A. (2006). Green cards and the location choices of immigrants in the united states, 1971-2000. IZA Discussion Paper No. 2145.
- LaLonde, R. J. and R. H. Topel (1991). Immigrants in the american labor market: Quality, assimilation, and distributional effects. *American Economic Review* 81(2), 297–302.
- Levitt, S. D. (1996). The effect of prison population size on crime rates: Evidence from prison overcrowding litigation. *Quarterly Journal of Economics* 111(2), 319–51.
- Levitt, S. D. (1998). Juvenile crime and punishment. *Journal of Political Economy* 106(6), 1156–1185.
- Lewis, E. (2005). Immigration, skill mix, and the choice of technique. Working Papers 05-8, Federal Reserve Bank of Philadelphia.
- McKenzie, D. and H. Rapoport (2007). Self-selection patterns in mexico-u.s. migration: The role of migration networks. CReAM Discussion Paper No. 0701.
- Ministero dell’Interno (2007). *Rapporto sulla criminalità in Italia. Analisi, Prevenzione, Contrasto*. Italian Ministry of Interior.
- Moehling, C. and A. M. Piehl (2007). Immigration and crime in early 20th century america. NBER Working Paper No. 13576.
- Munshi, K. (2003). Networks in the modern economy: Mexican migrants in the u.s. labor market. *Quarterly Journal of Economics* 118(2), 549–599.
- Ottaviano, G. I. and G. Peri (2006). The economic value of cultural diversity: evidence from US cities. *Journal of Economic Geography* 6(1), 9–44.
- Raphael, S. and R. Winter-Ember (2001). Identifying the effect of unemployment on crime. *Journal of Law & Economics* 44(1), 259–83.
- Saiz, A. (2007). Immigration and housing rents in american cities. *Journal of Urban Economics* 61(2), 345–371.
- Stock, J. H. and M. Yogo (2002). Testing for weak instruments in linear iv regression. NBER Working Paper No. 0284.
- Zenou, Y. (2003). The spatial aspects of crime. *Journal of the European Economic Association* 1(2-3), 459–467.

Appendix

Variables: definitions and sources

migr: log of residence permits over total province population, as of December 31 of each year. Source: Ministry of Interior.

total: log of reported crimes in each province and year. This category includes murder, serious assault, rape, sex offence, theft, robbery, extortion, kidnapping, incrimination for criminal association, arson, terrorism, drug-related crime, forgery and counterfeiting, fraud, prostitution, other crimes. Source: Statistiche Giudiziarie Penali - Italian National Institute of Statistics.

violent: log of reported violent crimes over total population in each province and year. Source: Statistiche Giudiziarie Penali - Italian National Institute of Statistics.

property: log of reported property crimes over total population in each province and year. This category includes robberies, thefts and car thefts. Source: Statistiche Giudiziarie Penali - Italian National Institute of Statistics.

theft: log of reported thefts over total population in each province and year. This category includes several types of crime such as: bag snatch and pickpocketing. Source: Statistiche Giudiziarie Penali - Italian National Institute of Statistics.

robbery: log of reported robberies over total population in each province and year. Source: Statistiche Giudiziarie Penali - Italian National Institute of Statistics.

car theft: log of reported car thefts over total population in each province and year. Source: Statistiche Giudiziarie Penali - Italian National Institute of Statistics.

drug: log of reported drug-related crimes over total population in each province and year. This category includes trafficking, consumption and pushing. Source: Statistiche Giudiziarie Penali - Italian National Institute of Statistics.

pop: log of resident population in each province and year. Source: Popolazione e movimento anagrafico dei comuni - Italian National Institute of Statistics.

urban: percentage of population living in cities with more than 100,000 inhabitants in each province and year. Source: Popolazione e movimento anagrafico dei comuni - Italian National Institute of Statistics.

male1539: percentage of young males aged 15-39 in the population in each province and year. Source: Popolazione e movimento anagrafico dei comuni - Italian National Institute of Statistics.

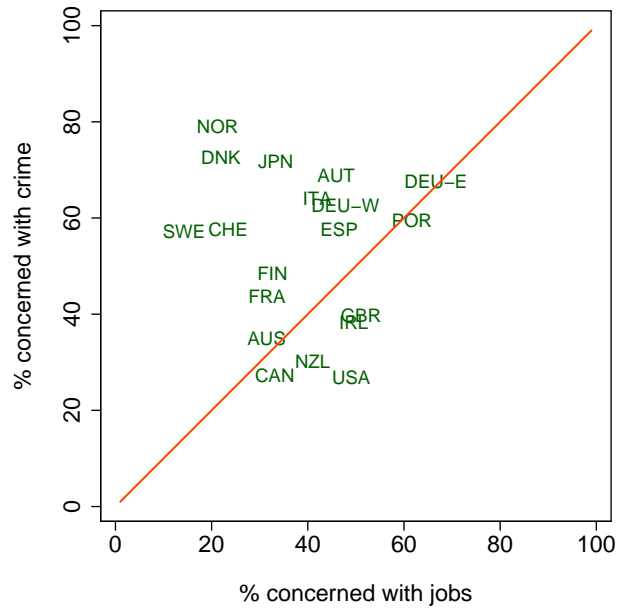
gdp: log of real GDP per-capita in each province and year. Source: Conti Economici Territoriali - Italian National Institute of Statistics.

unemp: percentage unemployment ratio in each province and year. Source: Labour Force Survey - Italian National Institute of Statistics.

clear – up: percentage ratio of the number of crimes cleared by the police to the total number of reported crimes, for each province, year and crime category. Source: Statistiche Giudiziarie Penali - Italian National Institute of Statistics.

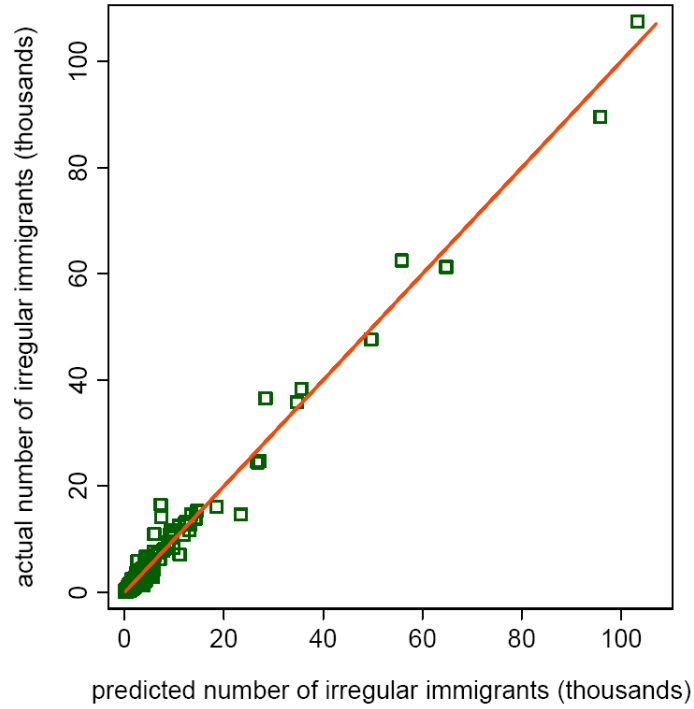
partisan: ideology of the provincial government. This variable is constructed as follows. First, a score between 0 (extreme left) and 20 (extreme right) is attached to each political party according to the expert surveys presented in Benoit and Laver (2006) (these data are available at <http://www.tcd.ie/Political.Science/ppmd/>). Then, the score of the local government is computed as the average score of all parties entering executive cabinet weighted by the number of seats held by each party in the local council (the composition of Italian local councils is available at <http://amministratori.interno.it/>).

Figure 1: Opinions about immigrants: crime vs. labor market concerns



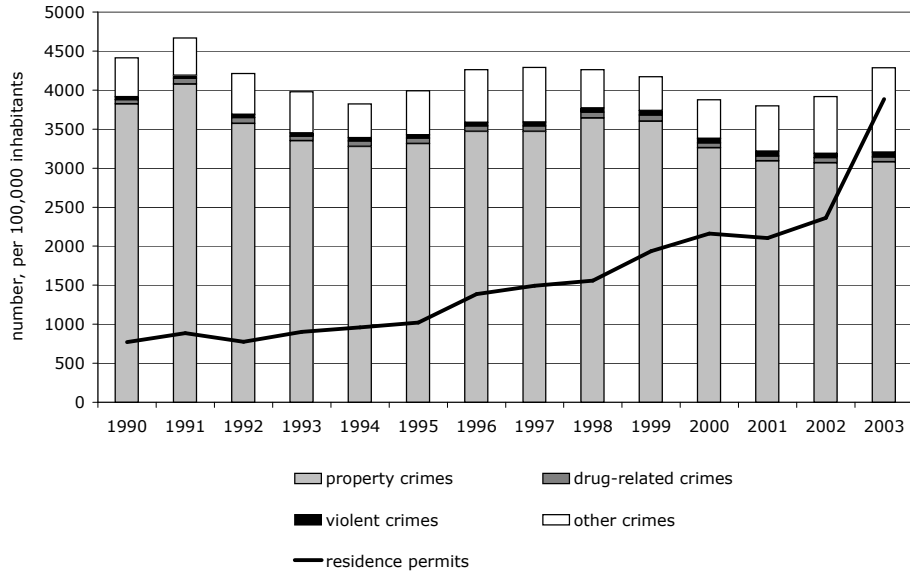
This graph presents the results of the “National Identity” survey conducted in 1995 and 2003 by the International Social Survey Programme. The vertical axis is the percentage of interviewed in each country that declared to “*Strongly Agree*” or “*Agree*” that “*Immigrants increase crime rates*”. The horizontal axis is the percentage of interviewed in each country that declared to “*Strongly Agree*” or “*Agree*” that “*Immigrants take jobs away from natives*”.

Figure 2: Actual and predicted irregular immigrants



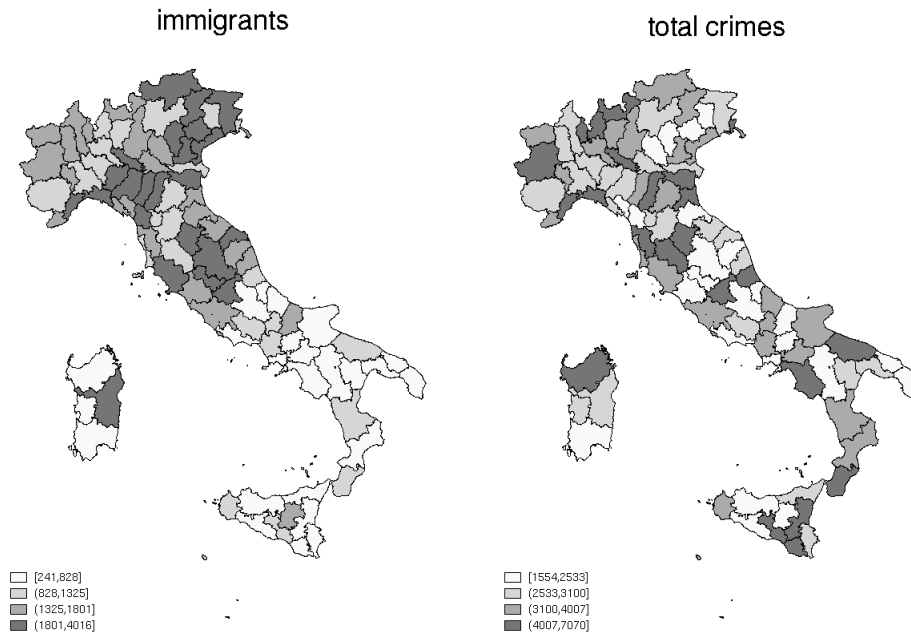
This figure plots the actual number of irregular immigrants (on the vertical axis) against the number predicted based on regular immigrants (on the horizontal axis) along with the 45-degree line. The actual number of irregular immigrants is given by the number of demands for regularization presented in province i and year t . The prediction is based on regression $\widehat{IRR}_{it} = \hat{\mu}_i MIGR_{it} + \hat{\mu}_t MIGR_{it} + \hat{\nu}_{it}$, where $MIGR_{it}$ is the number of residence permits in province i and year t during years 1995, 1998 and 2002 (see Section 2 for further details). The source of data on both residence permits and demands for regularization is the Italian Ministry of Interior.

Figure 3: Immigration and crime over time



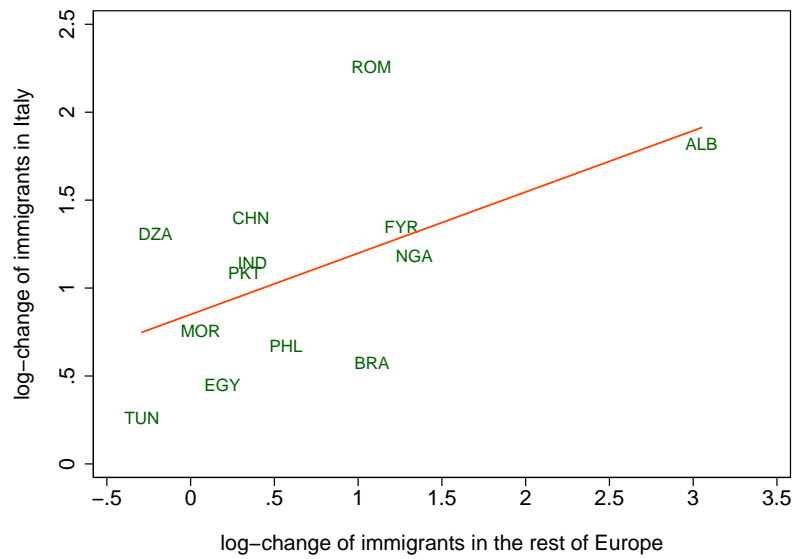
This graph shows the evolution over time of reported crimes and residence permits in Italy. The histogram refers to the number of reported crimes per 100,000 inhabitants, distinguishing between different categories of criminal offenses. The line refers to the number of residence permits awarded to immigrants in Italy, per 100,000 inhabitants. The source of data on reported crimes and residence permits are ISTAT and the Italian Ministry of Interior, respectively.

Figure 4: Immigration and crime across provinces



These figures show the distribution, across Italian provinces, of the number of immigrants and reported crimes per 100,000 inhabitants. All variables are yearly averages during the period 1990-2003. Provinces are colored according to which quartile of the distribution they belong to; darker colors refer to higher values. The extremes of each quartile, along with the corresponding color, are reported at the bottom of each map. The sources of data for residence permits and reported crimes are ISTAT and the Italian Ministry of Interior, respectively.

Figure 5: Immigration to Italy and to the rest of Europe



This figure plots the log-change of immigrant population in Italy during the 1991-2001 period (on the vertical axis) against the log-change of immigrant population in other European countries during the same period (on the horizontal axis), by country of origin. Immigrant population in Italy is measured by the number of residence permits, as reported by the Italian Ministry of Interior. Immigrant population in other European countries is measured using the 1991 and 2001 rounds of national census. The destination countries for which we obtained census data are Austria, Belgium, Denmark, Finland, France, Greece, Netherlands, Norway, Spain, Sweden and Switzerland. Information on the stock of immigrants in those countries was available for the following nationalities: Albania, Algeria, Brazil, China (excluding Hong Kong), Egypt, India, Morocco, Nigeria, Pakistan, Philippines, Romania, Tunisia, Former Yugoslavia.

Table 1: Descriptive statistics

	<i>observations</i>	<i>mean</i>	<i>std. dev.</i>	<i>min.</i>	<i>max</i>
Residence permits per 100,000 inhabitants	1330	1353	1187	44	7873
Total crimes per 100,000 inhabitants	1330	3388	1350	1072	13404
Violent crimes per 100,000 inhabitants	1330	50	29	1	230
Property crimes per 100,000 inhabitants	1330	2615	1216	442	7879
robberies	1330	37	41	2	385
thefts	1330	1943	909	321	6049
car thefts	1330	287	281	29	1648
Drug-related crimes per 100,000 inhabitants	1330	64	45	5	918
<i>migr</i>	1330	-4.64	0.85	-7.73	-2.54
<i>total</i>	1330	-3.45	0.37	-4.54	-2.01
<i>violent</i>	1330	-7.75	0.55	-11.19	-6.07
<i>property</i>	1330	-3.75	0.45	-5.42	-2.54
<i>robbery</i>	1330	-8.23	0.75	-10.74	-5.56
<i>theft</i>	1330	-4.04	0.45	-5.74	-2.81
<i>car theft</i>	1330	-6.22	0.83	-8.14	-4.11
<i>drug</i>	1330	-7.52	0.57	-9.84	-4.69
<i>pop</i>	1330	13.01	0.70	11.41	15.18
<i>urban</i>	1235	14.62	20.15	0.00	88.11
<i>male1539</i>	1330	18.01	1.23	14.41	21.03
<i>gdp</i>	1235	9.55	0.26	8.94	10.11
<i>unemp</i>	1045	10.43	7.09	1.68	33.16
<i>clear – up</i> (total crimes)	1330	30.54	10.47	9.20	82.75
<i>clear – up</i> (violent crimes)	1330	82.03	12.93	23.32	100.00
<i>clear – up</i> (property crimes)	1330	6.92	3.18	1.60	30.83
<i>clear – up</i> (drug-related crimes)	1330	95.77	5.61	37.71	100.00
<i>partisan</i>	1330	10.26	1.75	5.90	16.30

Notes: This table reports the descriptive statistics for all dependent and explanatory variables across the 95 Italian provinces during the period 1990-2003.

Table 2: Correlation Matrix

	<i>migr</i>	<i>total</i>	<i>violent</i>	<i>property</i>	<i>drug</i>	<i>pop</i>	<i>urban</i>	<i>male1539</i>	<i>gdp</i>	<i>unemp</i>	<i>clear – up</i>
<i>total</i>	0.356										
<i>violent</i>	0.289	0.377									
<i>property</i>	0.287	0.879	0.176								
<i>drug</i>	0.205	0.383	0.147	0.244							
<i>pop</i>	0.125	0.465	-0.062	0.598	0.036						
<i>urban</i>	0.208	0.550	0.091	0.557	0.171	0.475					
<i>male1539</i>	-0.471	-0.074	-0.120	0.036	-0.209	0.375	-0.053				
<i>gdp</i>	0.710	0.328	0.266	0.298	0.199	0.072	0.216	-0.407			
<i>unemp</i>	-0.607	-0.084	-0.179	-0.070	-0.136	0.138	0.057	0.425	-0.858		
<i>clear – up</i>	-0.276	-0.511	0.069	-0.723	0.070	-0.459	-0.404	-0.009	-0.288	0.113	
<i>partisan</i>	0.164	0.024	0.134	0.055	-0.065	0.116	-0.112	0.196	0.068	-0.060	-0.092

Notes: This table reports the correlation matrix between the ratio of immigrants over total population and the ratio of reported crimes over total population, distinguished by type of crime, across the 95 Italian provinces during the period 1990-2003.

Table 3: Panel regressions: baseline

	<i>total</i>	<i>violent</i>	<i>property</i>	<i>drug</i>	<i>total</i>	<i>violent</i>	<i>property</i>	<i>drug</i>
<i>migr</i>	0.103*** (0.034)	-.007 (0.057)	0.126*** (0.031)	-.190*** (0.06)	0.102*** (0.039)	0.003 (0.084)	0.084*** (0.028)	-.103 (0.074)
<i>pop</i>					0.028 (0.641)	-.338 (1.660)	0.96 (0.718)	-2.550 (1.552)
<i>urban</i>					0.003* (0.002)	-.003 (0.003)	0.003 (0.003)	-.010*** (0.002)
<i>male1539</i>					0.131*** (0.045)	0.236** (0.11)	0.041 (0.053)	0.325*** (0.108)
<i>gdp</i>					0.15 (0.14)	-.116 (0.319)	0.171 (0.166)	0.423 (0.378)
<i>unemp</i>					-.004 (0.004)	0.011 (0.01)	-.007* (0.003)	0.019* (0.01)
<i>clear – up</i>					-.004 (0.003)	-.008*** (0.002)	-.030*** (0.006)	0.0003 (0.003)
<i>partisan</i>					0.007 (0.01)	0.045** (0.019)	0.007 (0.009)	0.023 (0.015)
Obs.	1,330	1,330	1,330	1,330	1,045	1,045	1,045	1,045
Provinces	95	95	95	95	95	95	95	95
Prov. FE	yes	yes	yes	yes	yes	yes	yes	yes
Year FE	yes	yes	yes	yes	yes	yes	yes	yes
R^2	0.153	0.266	0.162	0.171	0.220	0.321	0.302	0.189
F-stat.	21.54	9.69	17.70	35.76	14.81	7.37	11.68	17.26

Notes: This table presents the results of OLS estimates on a panel of yearly observations for all 95 Italian provinces during the period 1991-2003. The dependent variable is the log of crimes reported by the police over total population, for each category of criminal offenses. The variable *migr* is the log of immigrants (i.e. residence permits) over province population. The sources of data for residence permits and reported crimes are ISTAT and the Italian Ministry of Interior, respectively. All other variables are defined in the Appendix. Province and year fixed-effects are included in all specifications. Robust standard errors are presented in parenthesis. *, ** and *** denote rejection of the null hypothesis of the coefficient being equal to 0 at 10%, 5% and 1% significance level, respectively.

Table 4: Panel regressions: property crimes breakdown

	<i>robbery</i>	<i>theft</i>	<i>car theft</i>	<i>robbery</i>	<i>theft</i>	<i>car theft</i>
<i>migr</i>	0.197*** (0.05)	0.14*** (0.032)	0.045 (0.041)	0.092* (0.05)	0.093*** (0.03)	0.057 (0.041)
<i>pop</i>				4.285*** (1.026)	1.155* (0.686)	0.365 (0.958)
<i>gdp</i>				-.155 (0.267)	0.113 (0.164)	0.611*** (0.232)
<i>unemp</i>				-.022*** (0.007)	-.006* (0.003)	-.003 (0.005)
<i>urban</i>				0.0007 (0.004)	0.004 (0.002)	0.004** (0.002)
<i>male1539</i>				-.145* (0.084)	0.052 (0.053)	0.1 (0.072)
<i>clear – up</i>				-.005*** (0.001)	-.030*** (0.006)	-.005** (0.003)
<i>partisan</i>				0.006 (0.013)	0.007 (0.009)	-.003 (0.011)
Obs.	1,330	1,330	1,330	1,045	1,045	1,045
Provinces	95	95	95	95	95	95
Prov. FE	yes	yes	yes	yes	yes	yes
Year FE	yes	yes	yes	yes	yes	yes
R^2	0.156	0.146	0.296	0.241	0.28	0.323
F-stat.	14.91	15.12	23.31	14.17	9.77	14.72

Notes: This table presents the results of OLS estimates on a panel of yearly observations for all 95 Italian provinces during the period 1991-2003. The dependent variable is the log of crimes reported by the police over total population, for each category of criminal offenses. The variable *migr* is the log of immigrants (i.e. residence permits) over province population. The sources of data for residence permits and reported crimes are ISTAT and the Italian Ministry of Interior, respectively. All other variables are defined in the Appendix. Province and year fixed-effects are included in all specifications. Robust standard errors are presented in parenthesis. *, ** and *** denote rejection of the null hypothesis of the coefficient being equal to 0 at 10%, 5% and 1% significance level, respectively.

Table 5: Ten-year difference regressions

Panel A: Second-Stage

	Ten-year differences: OLS				Ten-year differences: IV			
	$\Delta total$	$\Delta violent$	$\Delta property$	$\Delta drug$	$\Delta total$	$\Delta violent$	$\Delta property$	$\Delta drug$
$\Delta migr$.1558*** (.0492)	-.0389 (.1120)	.1362*** (.0452)	-.2680*** (.0934)	.1051 (.1874)	-.0964 (.4474)	.0456 (.1498)	-.1852 (.2990)
Obs.	95	95	95	95	95	95	95	95
R^2	0.241	0.062	0.276	0.219				
F-stat	5.40	1.56	6.95	4.95				

Panel B: First-Stage

$\widehat{\Delta migr}_{it}$	0.5223*** (0.1441)	0.4585*** (0.1672)	0.5346*** (0.1604)	0.5446*** (0.1620)
F-stat (excl. instr.)	13.14	7.52	11.11	11.30

Notes: The top panel of this table presents the results of OLS and IV (second-stage) estimates on the cross-section of ten-year differences between 1991 and 2001 across all 95 Italian provinces. The dependent variable is the log-change of the number of crimes reported by the police over total population, for each category of criminal offenses. The variable $\Delta migr$ is the log-change of immigrants (i.e. residence permits) over province population. The bottom panel reports first-stage estimates of IV regressions. The first-stage instrument, $\Delta \ln MIGR^{IV}$, is the weighted sum of the log-changes of immigrant population by nationality in other European countries. The weights are the shares of permits held by each nationality over total permits in that province in 1990 (see equation 5 in the main text). The log-changes of all control variables in Tables 3 and 4 are always included, both in the first and second stage. The sources of data for residence permits and reported crimes are ISTAT and the Italian Ministry of Interior, respectively. Immigrant population in other European countries is measured using the 1991 and 2001 rounds of national census. The F-statistic for excluded instruments refers to the null hypothesis that the coefficient of the excluded instrument is equal to zero in the first stage. Robust standard errors are presented in parenthesis. *, ** and *** denote rejection of the null hypothesis of the coefficient being equal to 0 at 10%, 5% and 1% significance level, respectively.

Table 6: Ten-year difference regressions: property crimes breakdown

Panel A: Second-Stage

	Ten-year differences: OLS			Ten-year differences: IV		
	$\Delta robbery$	$\Delta theft$	$\Delta car\ theft$	$\Delta robbery$	$\Delta theft$	$\Delta car\ theft$
$\Delta migr$.3508*** (.0890)	.1555*** (.0453)	-.0328 (.0807)	1.0234*** (.3602)	.1437 (.1509)	-.1167 (.2412)
Obs.	95	95	95	95	95	95
R^2	0.193	0.308	0.124			
F-stat	4.14	7.87	2.36			

Panel B: First-Stage

$\widehat{\Delta migr}_{it}$	0.5528*** (0.1626)	0.5311*** (0.1593)	0.5549** (0.1599)
1 st stage F-stat.	11.56	11.11	12.04

Notes: The top panel of this table presents the results of OLS and IV (second-stage) estimates on the cross-section of ten-year differences between 1991 and 2001 across all 95 Italian provinces. The dependent variable is the log-change of the number of crimes reported by the police over total population, for each category of criminal offenses. The variable $\Delta migr$ is the log-change of immigrants (i.e. residence permits) over province population. The bottom panel reports first-stage estimates of IV regressions. The first-stage instrument, $\widehat{\Delta migr}_{it}$, is the weighted sum of the log-changes of immigrant population by nationality in other European countries. The weights are the shares of permits held by each nationality over total permits in that province in 1990 (see equation 5 in the main text). The log-changes of all control variables in Tables 3 and 4 are always included, both in the first and second stage. The sources of data for residence permits and reported crimes are ISTAT and the Italian Ministry of Interior, respectively. Immigrant population in other European countries is measured using the 1991 and 2001 rounds of national census. The F-statistic for excluded instruments refers to the null hypothesis that the coefficient of the excluded instrument is equal to zero in the first stage. Robust standard errors are presented in parenthesis. *, ** and *** denote rejection of the null hypothesis of the coefficient being equal to 0 at 10%, 5% and 1% significance level, respectively.

Table 7: Robustness: immigrants from developing countries

Panel A: Second-Stage

	Ten-year differences: OLS				Ten-year differences: IV			
	$\Delta total$	$\Delta violent$	$\Delta property$	$\Delta drug$	$\Delta total$	$\Delta violent$	$\Delta property$	$\Delta drug$
$\Delta \ln migr^{dc}$.1477*** (.0506)	-.0478 (.1155)	.1321*** (.0487)	-.2462** (.0936)	.1009 (.1797)	-.0934 (.4345)	.0438 (.1435)	-.1779 (.5669)
Obs.	95	95	95	95	95	95	95	95
R^2	0.236	0.062	0.273	0.210				
F-stat	5.16	1.57	6.73	4.66				

Panel B: First-Stage

$\widehat{\Delta migr}_{it}$	0.5439*** (0.1533)	0.4730*** (0.1735)	.5570*** (0.1698)	0.5670*** (0.1714)
F-stat (excl. instr.)	12.59	7.44	10.76	10.94

Notes: The top panel of this table presents the results of OLS and IV (second-stage) estimates on the cross-section of ten-year differences between 1991 and 2001 across all 95 Italian provinces. The dependent variable is the log-change of the number of crimes reported by the police over total population, for each category of criminal offenses. The variable $\Delta migr^{dc}$ is the log-change of immigrants from developing countries over province population. The bottom panel reports first-stage estimates of IV regressions. The first-stage instrument, $\widehat{\Delta migr}_{it}$, is the weighted sum of the log-changes of immigrant population by nationality in other European countries. The weights are the shares of permits held by each nationality over total permits in that province in 1990 (see equation 5 in the main text). The log-changes of all control variables in Tables 3 and 4 are always included, both in the first and second stage. The sources of data for residence permits and reported crimes are ISTAT and the Italian Ministry of Interior, respectively. Immigrant population in other European countries is measured using the 1991 and 2001 rounds of national census. The F-statistic for excluded instruments refers to the null hypothesis that the coefficient of the excluded instrument is equal to zero in the first stage. Robust standard errors are presented in parenthesis. *, ** and *** denote rejection of the null hypothesis of the coefficient being equal to 0 at 10%, 5% and 1% significance level, respectively.

Table 8: Robustness: immigrants from developing countries, property crimes breakdown

Panel A: Second-Stage

	Ten-year differences: OLS			Ten-year differences: IV		
	$\Delta robbery$	$\Delta theft$	$\Delta car\ theft$	$\Delta robbery$	$\Delta theft$	$\Delta car\ theft$
$\Delta migr^{dc}$.3372*** (.0884)	.1519*** (.0488)	-.0370 (.0787)	.9846*** (.3461)	.1379 (.1440)	-.1123 (.2331)
Obs.	95	95	95	95	95	95
R^2	0.185	0.305	0.125			
F-stat	4.03	7.69	2.36			

Panel B: First-Stage

$\widehat{\Delta migr}_{it}$	0.5746*** (0.1833)	0.5537*** (0.1802)	0.5769** (0.1816)
1 st stage F-stat.	9.83	9.44	10.09

Notes: The top panel of this table presents the results of OLS and IV (second-stage) estimates on the cross-section of ten-year differences between 1991 and 2001 across all 95 Italian provinces. The dependent variable is the log-change of the number of crimes reported by the police over total population, for each category of criminal offenses. The variable $\Delta migr^{dc}$ is the log-change of immigrants from developing countries over province population. The bottom panel reports first-stage estimates of IV regressions. The first-stage instrument, $\widehat{\Delta migr}_{it}$, is the weighted sum of the log-changes of immigrant population by nationality in other European countries. The weights are the shares of permits held by each nationality over total permits in that province in 1990 (see equation 5 in the main text). The log-changes of all control variables in Tables 3 and 4 are always included, both in the first and second stage. The sources of data for residence permits and reported crimes are ISTAT and the Italian Ministry of Interior, respectively. Immigrant population in other European countries is measured using the 1991 and 2001 rounds of national census. The F-statistic for excluded instruments refers to the null hypothesis that the coefficient of the excluded instrument is equal to zero in the first stage. Robust standard errors are presented in parenthesis. *, ** and *** denote rejection of the null hypothesis of the coefficient being equal to 0 at 10%, 5% and 1% significance level, respectively.

Table 9: Robustness: composition by nationality

	$\Delta total$	$\Delta violent$	$\Delta property$	$\Delta drug$	$\Delta robbery$	$\Delta theft$	$\Delta car theft$
$\Delta migr^{nat}$.1301*** (.0407)	-.0252 (.1176)	.1224*** (.0375)	-.2455*** (.0754)	.3213*** (.0737)	.1385*** (.0373)	-.0120 (.0618)
Obs.	95	95	95	95	95	95	95
R^2	0.236	0.061	0.282	0.227	0.210	0.314	0.123
F-stat	5.83	1.58	7.58	5.42	4.73	8.61	2.38

Notes: This table presents the results of OLS estimates on the cross-section of ten-year differences between 1991 and 2001 across all 95 Italian provinces. The dependent variable is the log-change of the number of crimes reported by the police over total population, for each category of criminal offenses. The variable $\Delta migr^{nat}$ is the log-change of immigrants of those nationalities included in $\widehat{\Delta migr}$ (listed in Section 4) over province population. The log-changes of all control variables in Tables 3 and 4 are always included, both in the first and second stage. The sources of data for residence permits and reported crimes are ISTAT and the Italian Ministry of Interior, respectively. Robust standard errors are presented in parenthesis. *, ** and *** denote rejection of the null hypothesis of the coefficient being equal to 0 at 10%, 5% and 1% significance level, respectively.

Table 10: Robustness: spatial correlation

	$\Delta total$	$\Delta violent$	$\Delta property$	$\Delta drug$	$\Delta robbery$	$\Delta theft$	$\Delta car theft$
$\Delta migr$.0977 (.1903)	-.1349 (.4395)	.0453 (.1516)	-.1711 (.3015)	.9556*** (.2664)	.1416 (.1525)	-.2015 (.2606)
Spatial lag	.3799 (.4792)	.6074* (.3281)	.0588 (.6110)	.6601** (.2914)	.7216*** (.2559)	.1644 (.5716)	.0581 (.5570)

Notes: This table presents the results of IV (second-stage) estimates on the cross-section of ten-year differences between 1991 and 2001 across all 95 Italian provinces. The dependent variable is the log-change of the number of crimes reported by the police over total population, for each category of criminal offenses. The variable $\Delta migr$ is the log-change of immigrants over province population and is instrumented in the first stage by $\widehat{\Delta migr}_{it}$ (see equation 5 in the main text). The spatial lag is the weighted sum of the log of crimes over population in all other provinces, with weighting matrix based on the inverse of road travelling distance between provinces. The log-changes of all control variables in Tables 3 and 4 are always included, both in the first and second stage. The sources of data for residence permits and reported crimes are ISTAT and the Italian Ministry of Interior, respectively. Robust standard errors are presented in parenthesis. *, ** and *** denote rejection of the null hypothesis of the coefficient being equal to 0 at 10%, 5% and 1% significance level, respectively.

RECENTLY PUBLISHED “TEMI” (*)

- N. 670 – *Credit risk and business cycle over different regimes*, by Juri Marcucci and Mario Quagliariello (June 2008).
- N. 671 – *Cyclical asymmetry in fiscal variables*, by Fabrizio Balassone, Maura Francese and Stefania Zotteri (June 2008).
- N. 672 – *Labour market for teachers: Demographic characteristics and allocative mechanisms*, by Gianna Barbieri, Piero Cipollone and Paolo Sestito (June 2008).
- N. 673 – *Output growth volatility and remittances*, by Matteo Bugamelli and Francesco Paternò (June 2008).
- N. 674 – *Agglomeration within and between regions: Two econometric based indicators*, by Valter Di Giacinto and Marcello Pagnini (June 2008).
- N. 675 – *Service regulation and growth: Evidence from OECD countries*, by Guglielmo Barone and Federico Cingano (June 2008).
- N. 676 – *Has globalisation changed the Phillips curve? Firm-level evidence on the effect of activity on prices*, by Eugenio Gaiotti (June 2008).
- N. 677 – *Forecasting inflation and tracking monetary policy in the euro area: Does national information help?* by Riccardo Cristadoro, Fabrizio Venditti and Giuseppe Saporito (June 2008).
- N. 678 – *Monetary policy effects: New evidence from the Italian flow of funds*, by Riccardo Bonci and Francesco Columba (June 2008).
- N. 679 – *Does the expansion of higher education increase the equality of educational opportunities? Evidence from Italy*, by Massimiliano Bratti, Daniele Checchi and Guido de Blasio (June 2008).
- N. 680 – *Family succession and firm performance: Evidence from Italian family firms*, by Marco Cucculelli and Giacinto Micucci (June 2008).
- N. 681 – *Short-term interest rate futures as monetary policy forecasts*, by Giuseppe Ferrero and Andrea Nobili (June 2008).
- N. 682 – *Vertical specialisation in Europe: Evidence from the import content of exports*, by Emanuele Breda, Rita Cappariello and Roberta Zizza (August 2008).
- N. 683 – *A likelihood-based analysis for relaxing the exclusion restriction in randomized experiments with imperfect compliance*, by Andrea Mercatanti (August 2008).
- N. 684 – *Balancing work and family in Italy: New mothers' employment decisions after childbirth*, by Piero Casadio, Martina Lo Conte and Andrea Neri (August 2008).
- N. 685 – *Temporal aggregation of univariate and multivariate time series models: A survey*, by Andrea Silvestrini and David Veredas (August 2008).
- N. 686 – *Exploring agent-based methods for the analysis of payment systems: A crisis model for StarLogo TNG*, by Luca Arciero, Claudia Biancotti, Leandro D'Aurizio and Claudio Impenna (August 2008).
- N. 687 – *The labor market impact of immigration in Western Germany in the 1990's*, by Francesco D'Amuri, Gianmarco I. P. Ottaviano and Giovanni Peri (August 2008).
- N. 688 – *Agglomeration and growth: the effects of commuting costs*, by Antonio Accetturo (September 2008).
- N. 689 – *A beta based framework for (lower) bond risk premia*, by Stefano Nobili and Gerardo Palazzo (September 2008).
- N. 690 – *Nonlinearities in the dynamics of the euro area demand for M1*, by Alessandro Calza and Andrea Zaghini (September 2008).
- N. 691 – *Educational choices and the selection process before and after compulsory schooling*, by Sauro Mocetti (September 2008).
- N. 692 – *Investors' risk attitude and risky behavior: a Bayesian approach with imperfect information*, by Stefano Iezzi (September 2008).
- N. 693 – *Competing influence*, by Enrico Sette (September 2008).

(*) Requests for copies should be sent to:
 Banca d'Italia – Servizio Studi di struttura economica e finanziaria – Divisione Biblioteca e Archivio storico – Via Nazionale, 91 – 00184 Rome – (fax 0039 06 47922059). They are available on the Internet www.bancaditalia.it.

2006

- F. BUSETTI, *Tests of seasonal integration and cointegration in multivariate unobserved component models*, Journal of Applied Econometrics, Vol. 21, 4, pp. 419-438, **TD No. 476 (June 2003)**.
- C. BIANCOTTI, *A polarization of inequality? The distribution of national Gini coefficients 1970-1996*, Journal of Economic Inequality, Vol. 4, 1, pp. 1-32, **TD No. 487 (March 2004)**.
- L. CANNARI and S. CHIRI, *La bilancia dei pagamenti di parte corrente Nord-Sud (1998-2000)*, in L. Cannari, F. Panetta (a cura di), *Il sistema finanziario e il Mezzogiorno: squilibri strutturali e divari finanziari*, Bari, Cacucci, **TD No. 490 (March 2004)**.
- M. BOFONDI and G. GOBBI, *Information barriers to entry into credit markets*, Review of Finance, Vol. 10, 1, pp. 39-67, **TD No. 509 (July 2004)**.
- W. FUCHS and LIPPI F., *Monetary union with voluntary participation*, Review of Economic Studies, Vol. 73, pp. 437-457 **TD No. 512 (July 2004)**.
- E. GAIOTTI and A. SECCHI, *Is there a cost channel of monetary transmission? An investigation into the pricing behaviour of 2000 firms*, Journal of Money, Credit and Banking, Vol. 38, 8, pp. 2013-2038 **TD No. 525 (December 2004)**.
- A. BRANDOLINI, P. CIPOLLONE and E. VIVIANO, *Does the ILO definition capture all unemployment?*, Journal of the European Economic Association, Vol. 4, 1, pp. 153-179, **TD No. 529 (December 2004)**.
- A. BRANDOLINI, L. CANNARI, G. D'ALESSIO and I. FAIELLA, *Household wealth distribution in Italy in the 1990s*, in E. N. Wolff (ed.) *International Perspectives on Household Wealth*, Cheltenham, Edward Elgar, **TD No. 530 (December 2004)**.
- P. DEL GIOVANE and R. SABBATINI, *Perceived and measured inflation after the launch of the Euro: Explaining the gap in Italy*, Giornale degli economisti e annali di economia, Vol. 65, 2, pp. 155-192, **TD No. 532 (December 2004)**.
- M. CARUSO, *Monetary policy impulses, local output and the transmission mechanism*, Giornale degli economisti e annali di economia, Vol. 65, 1, pp. 1-30, **TD No. 537 (December 2004)**.
- L. GUIISO and M. PAIELLA, *The role of risk aversion in predicting individual behavior*, In P. A. Chiappori e C. Gollier (eds.) *Competitive Failures in Insurance Markets: Theory and Policy Implications*, Monaco, CESifo, **TD No. 546 (February 2005)**.
- G. M. TOMAT, *Prices product differentiation and quality measurement: A comparison between hedonic and matched model methods*, Research in Economics, Vol. 60, 1, pp. 54-68, **TD No. 547 (February 2005)**.
- L. GUIISO, M. PAIELLA and I. VISCO, *Do capital gains affect consumption? Estimates of wealth effects from Italian household's behavior*, in L. Klein (ed), *Long Run Growth and Short Run Stabilization: Essays in Memory of Albert Ando (1929-2002)*, Cheltenham, Elgar, **TD No. 555 (June 2005)**.
- F. BUSETTI, S. FABIANI and A. HARVEY, *Convergence of prices and rates of inflation*, Oxford Bulletin of Economics and Statistics, Vol. 68, 1, pp. 863-878, **TD No. 575 (February 2006)**.
- M. CARUSO, *Stock market fluctuations and money demand in Italy, 1913 - 2003*, Economic Notes, Vol. 35, 1, pp. 1-47, **TD No. 576 (February 2006)**.
- S. IRANZO, F. SCHIVARDI and E. TOSETTI, *Skill dispersion and productivity: An analysis with matched data*, CEPR Discussion Paper, 5539, **TD No. 577 (February 2006)**.
- R. BRONZINI and G. DE BLASIO, *Evaluating the impact of investment incentives: The case of Italy's Law 488/92*. Journal of Urban Economics, Vol. 60, 2, pp. 327-349, **TD No. 582 (March 2006)**.
- R. BRONZINI and G. DE BLASIO, *Una valutazione degli incentivi pubblici agli investimenti*, Rivista Italiana degli Economisti, Vol. 11, 3, pp. 331-362, **TD No. 582 (March 2006)**.
- A. DI CESARE, *Do market-based indicators anticipate rating agencies? Evidence for international banks*, Economic Notes, Vol. 35, pp. 121-150, **TD No. 593 (May 2006)**.
- R. GOLINELLI and S. MOMIGLIANO, *Real-time determinants of fiscal policies in the euro area*, Journal of Policy Modeling, Vol. 28, 9, pp. 943-964, **TD No. 609 (December 2006)**.

- S. SIVIERO and D. TERLIZZESE, *Macroeconomic forecasting: Debunking a few old wives' tales*, Journal of Business Cycle Measurement and Analysis, v. 3, 3, pp. 287-316, **TD No. 395 (February 2001)**.
- S. MAGRI, *Italian households' debt: The participation to the debt market and the size of the loan*, Empirical Economics, v. 33, 3, pp. 401-426, **TD No. 454 (October 2002)**.
- L. CASOLARO and G. GOBBI, *Information technology and productivity changes in the banking industry*, Economic Notes, Vol. 36, 1, pp. 43-76, **TD No. 489 (March 2004)**.
- G. FERRERO, *Monetary policy, learning and the speed of convergence*, Journal of Economic Dynamics and Control, v. 31, 9, pp. 3006-3041, **TD No. 499 (June 2004)**.
- M. PAIELLA, *Does wealth affect consumption? Evidence for Italy*, Journal of Macroeconomics, Vol. 29, 1, pp. 189-205, **TD No. 510 (July 2004)**.
- F. LIPPI and S. NERI, *Information variables for monetary policy in a small structural model of the euro area*, Journal of Monetary Economics, Vol. 54, 4, pp. 1256-1270, **TD No. 511 (July 2004)**.
- A. ANZUINI and A. LEVY, *Monetary policy shocks in the new EU members: A VAR approach*, Applied Economics, Vol. 39, 9, pp. 1147-1161, **TD No. 514 (July 2004)**.
- D. JR. MARCHETTI and F. Nucci, *Pricing behavior and the response of hours to productivity shocks*, Journal of Money Credit and Banking, v. 39, 7, pp. 1587-1611, **TD No. 524 (December 2004)**.
- R. BRONZINI, *FDI Inflows, agglomeration and host country firms' size: Evidence from Italy*, Regional Studies, Vol. 41, 7, pp. 963-978, **TD No. 526 (December 2004)**.
- L. MONTEFORTE, *Aggregation bias in macro models: Does it matter for the euro area?*, Economic Modelling, 24, pp. 236-261, **TD No. 534 (December 2004)**.
- A. NOBILI, *Assessing the predictive power of financial spreads in the euro area: does parameters instability matter?*, Empirical Economics, Vol. 31, 1, pp. 177-195, **TD No. 544 (February 2005)**.
- A. DALMAZZO and G. DE BLASIO, *Production and consumption externalities of human capital: An empirical study for Italy*, Journal of Population Economics, Vol. 20, 2, pp. 359-382, **TD No. 554 (June 2005)**.
- M. BUGAMELLI and R. TEDESCHI, *Le strategie di prezzo delle imprese esportatrici italiane*, Politica Economica, v. 23, 3, pp. 321-350, **TD No. 563 (November 2005)**.
- L. GAMBACORTA and S. IANNOTTI, *Are there asymmetries in the response of bank interest rates to monetary shocks?*, Applied Economics, v. 39, 19, pp. 2503-2517, **TD No. 566 (November 2005)**.
- P. ANGELINI and F. LIPPI, *Did prices really soar after the euro cash changeover? Evidence from ATM withdrawals*, International Journal of Central Banking, Vol. 3, 4, pp. 1-22, **TD No. 581 (March 2006)**.
- A. LOCARNO, *Imperfect knowledge, adaptive learning and the bias against activist monetary policies*, International Journal of Central Banking, v. 3, 3, pp. 47-85, **TD No. 590 (May 2006)**.
- F. LOTTI and J. MARCUCCI, *Revisiting the empirical evidence on firms' money demand*, Journal of Economics and Business, Vol. 59, 1, pp. 51-73, **TD No. 595 (May 2006)**.
- P. CIPOLLONE and A. ROSOLIA, *Social interactions in high school: Lessons from an earthquake*, American Economic Review, Vol. 97, 3, pp. 948-965, **TD No. 596 (September 2006)**.
- L. DEDOLA and S. NERI, *What does a technology shock do? A VAR analysis with model-based sign restrictions*, Journal of Monetary Economics, Vol. 54, 2, pp. 512-549, **TD No. 607 (December 2006)**.
- A. BRANDOLINI, *Measurement of income distribution in supranational entities: The case of the European Union*, in S. P. Jenkins e J. Micklewright (eds.), *Inequality and Poverty Re-examined*, Oxford, Oxford University Press, **TD No. 623 (April 2007)**.
- M. PAIELLA, *The foregone gains of incomplete portfolios*, Review of Financial Studies, Vol. 20, 5, pp. 1623-1646, **TD No. 625 (April 2007)**.
- K. BEHRENS, A. R. LAMORGESE, G.I.P. OTTAVIANO and T. TABUCHI, *Changes in transport and non transport costs: local vs. global impacts in a spatial network*, Regional Science and Urban Economics, Vol. 37, 6, pp. 625-648, **TD No. 628 (April 2007)**.
- G. ASCARI and T. ROPELE, *Optimal monetary policy under low trend inflation*, Journal of Monetary Economics, v. 54, 8, pp. 2568-2583, **TD No. 647 (November 2007)**.
- R. GIORDANO, S. MOMIGLIANO, S. NERI and R. PEROTTI, *The Effects of Fiscal Policy in Italy: Evidence from a VAR Model*, European Journal of Political Economy, Vol. 23, 3, pp. 707-733, **TD No. 656 (December 2007)**.
- G. BARBIERI, P. CIPOLLONE and P. SESTITO, *Labour market for teachers: demographic characteristics and allocative mechanisms*, Giornale degli economisti e annali di economia, v. 66, 3, pp. 335-373, **TD No. 672 (June 2008)**.

E. BREDA, R. CAPPARIELLO and R. ZIZZA, *Vertical specialisation in Europe: evidence from the import content of exports*, *Rivista di politica economica*, numero monografico, **TD No. 682 (August 2008)**.

2008

P. ANGELINI, *Liquidity and announcement effects in the euro area*, *Giornale degli Economisti e Annali di Economia*, v. 67, 1, pp. 1-20, **TD No. 451 (October 2002)**.

F. SCHIVARDI and R. TORRINI, *Identifying the effects of firing restrictions through size-contingent Differences in regulation*, *Labour Economics*, v. 15, 3, pp. 482-511, **TD No. 504 (June 2004)**.

C. BIANCOTTI, G. D'ALESSIO and A. NERI, *Measurement errors in the Bank of Italy's survey of household income and wealth*, *Review of Income and Wealth*, v. 54, 3, pp. 466-493, **TD No. 520 (October 2004)**.

S. MOMIGLIANO, J. HENRY and P. HERNÁNDEZ DE COS, *The impact of government budget on prices: Evidence from macroeconomic models*, *Journal of Policy Modelling*, v. 30, 1, pp. 123-143 **TD No. 523 (October 2004)**.

L. GAMBACORTA, *How do banks set interest rates?*, *European Economic Review*, v. 52, 5, pp. 792-819, **TD No. 542 (February 2005)**.

P. ANGELINI and A. GENERALE, *On the evolution of firm size distributions*, *American Economic Review*, v. 98, 1, pp. 426-438, **TD No. 549 (June 2005)**.

S. DI ADDARIO and E. PATACCHINI, *Wages and the city. Evidence from Italy*, *Labour Economics*, v.15, 5, pp. 1040-1061, **TD No. 570 (January 2006)**.

S. FEDERICO and G. A. MINERVA, *Outward FDI and local employment growth in Italy*, *Review of World Economics*, *Journal of Money, Credit and Banking*, v. 144, 2, pp. 295-324, **TD No. 613 (February 2007)**.

F. Busetti and A. HARVEY, *Testing for trend*, *Econometric Theory*, v. 24, 1, pp. 72-87, **TD No. 614 (February 2007)**.

V. CESTARI, P. DEL GIOVANE and C. ROSSI-ARNAUD, *Memory for Prices and the Euro Cash Changeover: An Analysis for Cinema Prices in Italy*, In P. Del Giovane e R. Sabbatini (eds.), *The Euro Inflation and Consumers' Perceptions. Lessons from Italy*, Berlin-Heidelberg, Springer, **TD No. 619 (February 2007)**.

J. SOUSA and A. ZAGHINI, *Monetary Policy Shocks in the Euro Area and Global Liquidity Spillovers*, *International Journal of Finance and Economics*, v.13, 3, pp. 205-218, **TD No. 629 (June 2007)**.

M. DEL GATTO, GIANMARCO I. P. OTTAVIANO and M. PAGNINI, *Openness to trade and industry cost dispersion: Evidence from a panel of Italian firms*, *Journal of Regional Science*, v. 48, 1, pp. 97-129, **TD No. 635 (June 2007)**.

P. DEL GIOVANE, S. FABIANI and R. SABBATINI, *What's behind "inflation perceptions"? A survey-based analysis of Italian consumers*, in P. Del Giovane e R. Sabbatini (eds.), *The Euro Inflation and Consumers' Perceptions. Lessons from Italy*, Berlin-Heidelberg, Springer, **TD No. 655 (January 2008)**.

B. BORTOLOTTI, and P. PINOTTI, *Delayed privatization*, *Public Choice*, v. 136, 3-4, pp. 331-351, **TD No. 663 (April 2008)**.

R. BONCI and F. COLUMBA, *Monetary policy effects: New evidence from the Italian flow of funds*, *Applied Economics*, v. 40, 21, pp. 2803-2818, **TD No. 678 (June 2008)**.

M. CUCCULELLI, and G. MICUCCI, *Family Succession and firm performance: evidence from Italian family firms*, *Journal of Corporate Finance*, v. 14, 1, pp. 17-31, **TD No. 680 (June 2008)**.

FORTHCOMING

P. ANGELINI, P. DEL GIOVANE, S. SIVIERO and D. TERLIZZESE, *Monetary policy in a monetary union: What role for regional information?*, *International Journal of Central Banking*, **TD No. 457 (December 2002)**.

L. MONTEFORTE and S. SIVIERO, *The Economic Consequences of Euro Area Modelling Shortcuts*, *Applied Economics*, **TD No. 458 (December 2002)**.

L. GUISO and M. PAIELLA, *Risk aversion, wealth and background risk*, *Journal of the European Economic Association*, **TD No. 483 (September 2003)**.

- R. FELICI and M. PAGNINI, *Distance, bank heterogeneity and entry in local banking markets*, The Journal of Industrial Economics, **TD No. 557 (June 2005)**.
- M. BUGAMELLI and A. ROSOLIA, *Produttività e concorrenza estera*, Rivista di politica economica, **TD No. 578 (February 2006)**.
- M. PERICOLI and M. TABOGA, *Canonical term-structure models with observable factors and the dynamics of bond risk premia*, Journal of Money, Credit and Banking, **TD No. 580 (February 2006)**.
- E. VIVIANO, *Entry regulations and labour market outcomes. Evidence from the Italian retail trade sector*, Labour Economics, **TD No. 594 (May 2006)**.
- R. BRONZINI and P. PISELLI, *Determinants of long-run regional productivity with geographical spillovers: the role of R&D, human capital and public infrastructure*, Regional Science and Urban Economics, **TD No. 597 (September 2006)**.
- U. ALBERTAZZI and L. GAMBACORTA, *Bank profitability and the business cycle*, Journal of Financial Stability, **TD No. 601 (September 2006)**.
- M. BUGAMELLI, *Prezzi delle esportazioni, qualità dei prodotti e caratteristiche di impresa: analisi su un campione di imprese italiane*, Economia e Politica Industriale, **TD No. 634 (June 2007)**.
- A. CIARLONE, P. PISELLI and G. TREBESCHI, *Emerging Markets' Spreads and Global Financial Conditions*, Journal of International Financial Markets, Institutions & Money, **TD No. 637 (June 2007)**.
- S. MAGRI, *The financing of small innovative firms: The Italian case*, Economics of Innovation and New Technology, **TD No. 640 (September 2007)**.
- L. FORNI, L. MONTEFORTE and L. SESSA, *The general equilibrium effects of fiscal policy: Estimates for the euro area*, Journal of Public Economics, **TD No. 652 (November 2007)**.
- L. ARCIERO, C. BIANCOTTI, L. D'AURIZIO and C. IMPENNA, *Exploring agent-based methods for the analysis of payment systems: A crisis model for StarLogo TNG*, Journal of Artificial Societies and Social Simulation, **TD No. 686 (August 2008)**.