



BANCA D'ITALIA
EUROSISTEMA

Temi di discussione

(Working papers)

The generation gap: Relative earnings
of young and old workers in Italy

by Alfonso Rosolia and Roberto Torrini

September 2007

Number

639

The purpose of the Temi di discussione series is to promote the circulation of working papers prepared within the Bank of Italy or presented in Bank seminars by outside economists with the aim of stimulating comments and suggestions.

The views expressed in the articles are those of the authors and do not involve the responsibility of the Bank.

Editorial Board: DOMENICO J. MARCHETTI, MARCELLO BOFONDI, MICHELE CAIVANO, STEFANO IEZZI, ANDREA LAMORGESE, FRANCESCA LOTTI, MARCELLO PERICOLI, MASSIMO SBRACIA, ALESSANDRO SECCHI, PIETRO TOMMASINO.

Editorial Assistants: ROBERTO MARANO, ALESSANDRA PICCININI.

THE GENERATION GAP: RELATIVE EARNINGS OF YOUNG AND OLD WORKERS IN ITALY.

by Alfonso Rosolia* and Roberto Torrini**

Abstract

We describe the evolution of the relative earnings of young male workers and the evolution of the age-earnings profiles across cohorts in the last three decades. We draw on administrative records to document a significant deterioration of entry wages over the 1990s in the presence of basically stable experience profiles. We supplement the analysis with the Bank of Italy's Survey on Household Income and Wealth and show that the wage gap between younger and older workers widened in the 90s for all levels of educational attainment. These developments are not accounted for by changes in relative skill-age labor supplies or in other potential socio-demographic determinants of wages. We argue that they were probably the result of partial labor market reforms that generated a dual labor market along the age dimension, opening a gap between the earnings of old incumbent workers and those of new labor market entrants.

JEL Classification: J31.

Keywords: earnings distribution, cohort effects, labor market reforms.

Contents

1. Introduction.....	3
2. Earnings dynamics over the working life	5
3. Some potential explanations	8
3.A. Changing selection in and out.....	8
3.B. Changing socio-demographics.....	9
3.C. Changing relative supplies.....	12
4. Conclusions	14
Tables and Figures.....	17
References	27

* Bank of Italy, Economics and International Relations and CEPR.

** Bank of Italy, Economics and International Relations.

1. Introduction¹

This paper describes the evolution of entry wages and career profiles of the cohorts entered in the Italian labor market over the last three decades, with a specific focus on the developments of intergenerational earnings inequality. Much effort has been devoted to understanding the developments in earnings inequality in the US and of unemployment in Europe. The interplay between market forces and institutions has been suggested as the reason for the persistence of unemployment in Europe and for the rise in earnings inequality in the US². One strand of the literature considers the rise of inequality in the US mostly due to technological change and has suggested that institutional arrangements prevented wage dispersion from increasing in Europe and caused unemployment to rise in continental Europe. Labour market rigidities and trade unions are seen as the ultimate cause of such a resistance to market forces. The debate on institutional arrangements has triggered reforms in a number of European countries, and improvements in terms of employment growth have been achieved even in countries traditionally characterized by poor performances of their labour markets, like Italy and France (Brandolini et al., 2005; Bassanetti et al. 2006). However, partial reforms of labour market regulation could give rise to a dual labour market, where the burden of the adjustment is borne by only part of the labour force. In particular, when they affect mostly the new entrants, reforms are likely to have an impact on earnings dispersion along the age dimension, opening a gap between generations both in terms of expected lifetime labor earnings and pension wealth. The Italian case is particularly interesting in this respect since, moving from high unemployment rates and low participation up to first half of the 1990s, employment growth accelerated dramatically when compared to GDP dynamics, thanks to overall real wage moderation and piecemeal reforms of the labour market (Brandolini et al., 2005). Regulatory reforms have prompted greater flexibility in working arrangements in terms both of hiring conditions (intensive use of temporary contracts) and entry level wages³.

Wages evolve along the life cycle as a result of two different forces: economy wide productivity growth and the accumulation of working experience. Standard Mincerian equations estimated on cross-section data quantify the effect of experience comparing wages of workers at different points in their life cycle in a given year, assuming implicitly that less experienced workers will face in the

¹ We thank Andrea Brandolini, Piero Cipollone, Marco Magnani, Paolo Sestito, Eliana Viviano, two referees and participants at the Bank of Italy, XLVII meeting of Società Italiana degli Economisti (Verona, 2006), LoWER workshop (Annecy, 2006), EqualSOC meeting (Milan, 2006) for their comments. The views expressed in this paper do not necessarily reflect those of the Bank of Italy. E-mail: alfonso.rosolia@bancaditalia.it, roberto.torrini@bancaditalia.it.

² See Card and Di Nardo (2002); Di Nardo, Fortin and Lemieux (1996); Autor, Katz and Kearney (2005) for the inequality debate in the US, and Layard, Nickell, and Jackman (1991); OECD (1994); Blanchard (2005) for unemployment in Europe.

³ See Contini and Trivellato (2005), for an assessment of the evolution of the Italian labour market and the relevance of institutional changes in determining a divide between young and older workers.

future the same pattern as more experienced ones. This would be the case if the cross sectional distribution of wages according to work experience remained unchanged over time but for its mean, which in the long run should evolve roughly at the same rate as labour productivity. However, different cohorts of workers may experience different entry wages and age-earnings profile because of technological change⁴, institutional factors, or the interplay of supply and demand of imperfectly substitutable workers. These factors show up in a cohort effect, whereby the entry wage and/or the career pattern of workers vary across people entering the labour market at different points in time: a generation gap.

We document the evolution of the entry wages and subsequent career profiles of male workers drawing on a 30-year longitudinal panel of administrative records that allows us to track the working history of all cohorts entered in the labor market from the late 70s. We find a significant deterioration of entry wages starting from the early 1990s which was not compensated by relevant changes in the subsequent experience profile. We then examine potential explanations and find that such deterioration is not associated with an increase in wage dispersion, suggesting that it is not driven by the entry of less able individuals favoured by labor market reforms. The finding is confirmed when we complement the analysis with a richer dataset, the Survey of Household Income and Wealth of the Bank of Italy (SHIW), that allows to explicitly account for the evolution of socio-demographic factors not available in the administrative records. Finally, we show that also a simple supply-demand explanation is unable to account for the observed deterioration. We conclude that these developments are plausibly accounted for by the fact that institutional reforms aimed at lowering labor costs eventually affected mostly the new cohorts entering the labor market.

There is a long tradition of studies on the impact on life-cycle earnings profiles of cohort-specific factors. Freeman (1975) focuses on the negative impact on the relative wage of young college graduated workers of the entry in the labour market of a large cohort of college graduates in the early 1970s. Freeman (1979) and Welch (1979) analyse the effect of the entry into the labour market of the baby-boom generation, finding a sizeable negative impact on the relative wage of young workers. More recently, Card and Lemieux (2001) explain part of the rise in the overall US college premium by the slowdown in the supply of new college graduates, which mainly benefited younger cohorts. Gosling, Machin and Meghir (2000) find evidence for the UK of an increasing wage differential between young and older workers. This is attributed to a negative cohort effect on young cohorts' entry wages but not their growth over the life cycle. This implies that new cohorts

⁴ The positive relation between experience and wages can be justified on the basis of both human capital accumulation and of incentive mechanisms, where a growing patterns for salaries respond to the need of spurring work effort. Here for short we will label these different factors as technological.

experience a permanent loss in their working life earning due to a lower entry wage which is not offset by a faster career. They do not identify the source of such a cohort effect but point at institutions, educational quality or labour market condition rather than cohort size as possible explanations. Similarly, Beaudry and Green (2000) and Beach and Finnie (2004) for Canada find a declining entry wage for cohort entered in the labour market during the 1990. On the contrary, Fitzenberg et al. (2001) compare different cohorts of German workers and find a quite stable wage structure.

In addition to quantifying the evolution of inequality along the cohort dimension, the evidence discussed in the paper is also relevant for a correct assessment of the actual cost for firms of expanding the labour input, as the wage rate of new entrants is likely to be the relevant price for firms when deciding whether to expand productive capacity via labour or capital input. In this respect, the analysis adds to the interpretation of the relative dynamics of output and labor input observed in Italy over the past decade and offers elements to predict the medium-run evolution of labor costs.

2. Earnings dynamics over the working life.

We start our analysis with a description of the evolution of entry wages and career profiles over the life cycle. We draw on a longitudinal sample of administrative records that allows us to track each worker since he enters the labor market⁵. We have information on weeks worked each year, yearly compensation, the identity of the firm along with basic information on age and sex. The data cover a sample of around 70,000 private non-agricultural Italian employees over the period 1975-2004. A major limitation of this data is the lack of information on educational attainment⁶. Over the period spanned by the data Italy recorded a significant increase in education achievements: between 1977 and 2004 the share of high school graduates in the labor forces went from less than 13 percent to about 44 percent; that of college graduates from 4 to 14 percent. We deal with this shortcoming proxying the educational achievement by the (observed) entry age: we assume that workers who entered the labour market at age 21-22 have plausibly completed secondary education but not college and workers entered at age 25-26 plausibly hold a college degree⁷. Furthermore, we follow Beaudry and Green (2000) and define a cohort as workers born in two contiguous years so as to increase sample size in each cohort.

⁵ More precisely, our administrative records allow to track only employees in the private non agricultural sector. We thus miss the true entry date for those individuals who start out their working life as self-employed or as employees in the agricultural or in the public sectors.

⁶ Another issue with this data is that we observe gross earnings in private sector as reported for social security purposes, so that only regular workers enter the analysis.

⁷ We deal explicitly with secular changes in educational achievements in the next section.

Figure 1 describes the evolution of real⁸ weekly wages of male worker who entered at age 21-22 (top panel) and 25-26 (bottom panel); the thick line represents the entry wages of subsequent cohorts, while the thinner ones are the wage profiles over the working life for selected cohorts⁹. In both groups entry conditions in the labour market deteriorated since the early 1990s, after substantial improvements between the mid-1970s and late 1980s. For the lower educated group (entry at 21-22) initial wages grew between 1976 and 1992 by 35 percent and declined thereafter by 12 percent, going back to the levels recorded more than two decades earlier; among the more educated (entry at age 25-26), after an increase up to 1992 of similar magnitude (37 percent), starting wages declined by 8 percent in the following decade, with a slight recovery in 2004 that put the overall fall with respect to the 1992 peak to about 4 percent. As a benchmark, over the period 1976-1992 aggregate average yearly real wages per standard labor unit in the private sector, as measured by the National Accounts, grew by 33 percent and remained largely stationary thereafter. Worse initial conditions than in the past, however, do not necessarily imply a net welfare loss for the individual. First, overall labor income depends not only on initial conditions but also on the age-earnings profile the individual will experience during his working life. Second, in the presence of credit markets individuals could borrow against higher future labour incomes to smooth their consumption profile, which ultimately is the relevant measure of welfare.

The data allow us to explore also the career profile of different cohorts and therefore to establish whether the drop in the entry wage entails a persistent loss with respect to previous cohorts. Visual inspection of figure 1 however, does not suggest a steeper age-earning profiles for the cohorts who suffered drops in entry wages. The time patterns appear to be roughly the same, although moving from different starting points. If anything, younger cohorts seem to be characterized by even flatter careers. Note also that the drop in the entry wage does not seem to be matched by an economy-wide fall in wages: the wages of incumbent older cohorts did not show particular signs of weakness. To have a rough idea of the overall loss suffered by younger cohorts we compare the wage growth experienced by the cohorts entered at age 21-22 in 1986 and 1992: after 7 years the weekly wage had increased by more than 60 percent for the former as opposed to 38 percent for the latter; among those entered in the same years at age 25-26, after 7 years the 1986 entrants' wages had grown by 85 percent as opposed to 54 percent for the 1992 entrants.

⁸ Throughout the paper wages are deflated using the consumer price index.

⁹ Incidentally, note that the group of those entered in the market at 25-26 years old is smaller and likely to hide more variation in the educational attainments both across individuals (for example, it might include late high-school graduates, college dropouts, early and late college graduates) and over time (for example, an increasing share of college graduates).

This evidence is however only suggestive. Different cohorts experienced different macroeconomic conditions at corresponding points in life. Such considerations thus command a more formal analysis of the evolution of earnings over time and across cohorts that explicitly accounts for common macro developments and labor market conditions. Specifically, we model the log wage at time t of an agent i in cohort c at age a as the sum of a time effect common to all individuals μ_t , an age effect assumed to be the same for all agents μ_a , and a cohort effect μ_c . Formally:

$$W_{i,tca} = \mu_t + \mu_a + \mu_c + \varepsilon_{it} \quad (1)$$

where ε_{it} captures residual individual heterogeneity. In addition, we model age-effects as third order polynomials in age and the time-effects as third order polynomials in calendar date augmented with a measure of the unemployment rate¹⁰. We thus allow for cohort effects that *shift* the common wage profile over time. Such cohort effects represent estimates of the entry wages¹¹. Equation (1) is estimated separately for individuals who enter at age 21-22 and 25-26. The exercise largely confirms the intuitions obtained from the previous visual analysis. As expected, a formal test of the null that the entry wages are constant across cohorts is strongly rejected for both entry age groups. Figure 2 displays for both groups the evolution of the estimated cohort effects, expressed as log differences from the one estimated for the oldest cohort in the group. The econometric evidence shows that even accounting for common macroeconomic developments, after rising throughout the 80s entry wages of cohorts entering the labor market in the '90s decreased significantly, losing up to 12 percent in comparison to the oldest cohort in the group, who entered the market almost three decades earlier, and over 20 percent with respect to the peak cohorts that entered in the late 80s.

The previous evidence is obtained under the assumption that subsequent cohorts with a given educational level experience the same age-earnings profile. To assess how strong such a restriction is, we performed three exercises. First, we simply regressed the residuals of the previous regressions on a cubic in age and its interaction with a dummy for entries in the 1990s. Second, we defined a new dependent variable netted of the previously estimated cohort effects and regressed it on a polynomial in age and its interaction with a post-1990 entry, a cubic in time and the measure of cyclical unemployment. Third, we simply estimated the original model allowing for an additional quadratic in age specifically for cohorts entered in the 1990s. In all exercises, statistical significance

¹⁰Specifically, we regressed the unemployment rate on a cubic in time and included the residuals of such preliminary regression in the empirical model above to capture higher frequency shocks the cubic in time might miss because of its implicit smoothness. Note also that because of the linear relationship between age, time and birth year identification relies on the assumption that a cohort is defined as two contiguous birth years. We experimented with slight variations of the empirical models and found the results qualitatively unaffected.

¹¹Given our definition of cohort (two contiguous birth years), we only use data from every second year, starting in 1976.

of the age polynomial would be suggestive of differences in the age patterns of subsequent cohorts. Results show that cohorts who entered at age 21-22 experience the same age profile independently of entry year, while more educated groups exhibit some differences. While statistically significant, however, the estimated differences do not imply economically relevant effects. For example, after 10 years from entry the cumulated wage difference amounts at most to 1 percent in favour of educated workers entered in the 1990s.

Note that this result suggests that the observed developments in entry wages do not reflect the adjustment of a market imbalance due to the wage compression caused by the indexation mechanism in place until the early 1990s (Manacorda (2004), Ichino and Erickson (1994)). In fact, if this was the case, we should have also observed, together with falling initial wages, steeper wage profiles for younger cohorts reflecting the decompression of the tenure differentials.

To sum up, the analysis of this section supports the view that cohorts entered into the labour market since the early 1990s experienced a sizeable wage loss with respect to those entered in the previous decades. The loss due to a declining entry wage, only partly explained by a slightly negative general wage trend since the early 90s, was not off set by more rapid career paths. The above findings are even more worrisome if one considers that the underlying data do not include new working arrangements such as Collaborations and free-lance relations which have become increasingly important in the most recent years and are known to imply less favourable conditions than the standard dependent employment relationships covered by our data¹² (Berton, Pacelli and Segre, 2005).

What are the possible reasons for such a decline? Economic theory offers a variety of potential explanations. In the next section we contrast some of them with the available evidence.

3. Some potential explanations

3A. Changing selection in and out.

The first possibility we examine is the potentially adverse selection caused by the labor market reforms of the early 1990s which increased the degree of flexibility in labor adjustment through new contractual arrangements or less stringent rules on existing ones. Such institutional changes contributed to increase the degree of wage moderation thereby making it possible to employ also individuals who would have otherwise stayed unemployed because of their insufficient skills. Thus, the average entry wage would have gone down simply due to a recomposition effects. Indeed, the

¹² Collaborations, (“collaborazioni coordinate e continuative” recently changed in “project work”), are mixture of paid employment and free-lance relationships. They do not benefit from employment protection legislation and minimum contractual wages do not apply. Also, social security contributions and benefits are lower than for standard paid employment making the lifetime outlook even worse.

overall unemployment rate went down significantly between the mid 1990s and mid 2000s, from about 12 percent to around 8; similarly, the employment rate increased by more than 5 percentage points. The effect was large also for younger cohorts: the unemployment rate of 15-34 years old went from 20 to 13 percent and the employment rate from 45 to over 50 percent. However, in addition to the fall in the average we should have also observed an increase in the dispersion of entry wages. In fact, the wages of those who would have been employed anyway should have been largely unaffected while the bottom tail of the wage distribution should have become thicker, driving down the average. The top panel of figure 3 reports the coefficient of variation of entry wages for the cohorts entered between mid 1970s and early 2000s. Again, we focus on entrants of age 21-22 and 25-26. We do not find compelling evidence of increasing dispersion, although the figures suggest a slight increase in inequality among entrants over the 1990s. Such evidence, however, does not account for the overall developments in wage inequality. Therefore, in the bottom panel we have plotted the ratio of the coefficient of variation of entry wages displayed in the upper panel to the coefficient of variation of the overall wage distribution in the same year. Such a comparison suggests that throughout the 1990s initial inequality has been lower than overall dispersion and, more importantly, substantially stable relative to overall inequality. This evidence suggests that the developments of entry wages can hardly be reconciled with the entry of a larger proportion of less able individuals formerly priced out of the market.

Another way in which selection may affect the evidence of the previous section is through the retirement decision of older low earners. If for any reason the exit decision has changed over time, leading to more exits among the low earners, this would contribute to widening the actual gap between younger and older cohorts in the recent years because of the better (unobserved) quality of older employees. However, the oldest cohorts in our data (entered in 1976) are observed in employment for at most 28 years; the bulk of the data covers individuals with working lives not long enough to be significantly affected by retirement decisions¹³.

3B. Changing socio-demographics.

The evidence of the previous section concerns developments occurred over three decades. In this sense, the data limitation implicit in the underlying administrative records are likely to be important since they do not enable us to explore the effects of changes in the distribution of education, working hours, family structure, and a variety of other factors that are likely to shape an individual decision to participate and her reservation wage. We thus try to complement the previous analysis drawing on the Survey of Household Income and Wealth of the Bank of Italy. Unfortunately, in

¹³ This also applies to the early retirement policies implemented in Italy up to the first half of the 1990s when the cohorts studied here were again mostly below the minimal required age.

doing so we lose the panel dimension and cannot follow a given individual from his entry in the labor market. From now on we will be focussing on comparisons of net monthly wages of employees of different age at a given point in time¹⁴. Specifically, we focus on males aged 19-60 employed in the non-agricultural sector¹⁵. In this sample, between 1977 and 1989 average real net monthly earnings in this group increased by about 21 percent; they declined by 3 percent from 1989 to 2004. Most of the decline observed since 1989 stems from the reduction in the average earnings of young workers which partly counterbalanced the effect of longer tenures implied by an aging workforce: the incidence of young workers declined from 27 per cent of total employment in 1989 to 22 per cent in 2004. Holding the share of young workers at its 1989 level, average earnings would have dropped by almost 5 percent instead of 3, 70 percent of the decline (3.3 percentage points) due to the fall in average young workers' wages and 30 percent (1.4 points) due to the fall in those of older workers.

The top panel of figure 4 displays the difference between the (logarithm of the) net monthly wage of older (31-60) and younger (age 19-30) workers between 1977 and 2004¹⁶. The wage differential remained fairly stable between the mid-1970's and mid 1980s, declined in the late 1980s and increased again during the 1990s, reaching a peak at the beginning of this decade. In 2004 older workers earned 35 per cent more than younger ones as opposed to a 25 per cent differential in the late 1970s and less than a 20 per cent gap in 1989. Holding the age-education composition of the two groups constant at the 1977-78 level does not change substantially the picture, except for some reversal in most recent years¹⁷. Also, it is largely unaffected by a finer definition of earnings based on hourly wages, available only since 1987, although a partial narrowing of the gap seems to have taken place since the mid 1990s plausibly because of the spreading of part-time among younger workers (fig. 4, bottom panel). All in all, the evidence is largely consistent with the initial findings based on administrative records. These developments took place in spite of the fact that average education of young workers has kept increasing in the period we analyse, likely improving the relative efficiency of younger workers. In fact, we detect similar trends in the wage gaps for each education group. The four panels in figure 5 report the wage differential for the whole sample, for

¹⁴ Differently from the administrative records used so far, that record gross earnings in private sector as reported for social security purposes, the Survey collects information on self-reported after-taxes yearly labour incomes and months worked along with a variety of socio-demographic information. From 1987 on it also collects information on hours worked.

¹⁵ The classification adopted in the old waves of the survey does not allow us to distinguish between public and private sector employment for the entire period of analysis.

¹⁶ The survey was run annually until 1984 and every second year from then onward; the only exception is the 3 year gap between the waves of 1995 and 1998.

¹⁷ We split the sample in 15 cells, defined by 5 age classes 19-30, 31-40, 41-50, 51-60 and 3 education classes, compulsory school of less, high school, college or more. As a check, we have replicated the exercise holding also industry composition constant and basically found the same results.

workers with compulsory education or less, with secondary school and with college or more, respectively. For highly educated workers and less educated ones, apart from fluctuations due to the small size of the sample, the old-young differential follows the average pattern. Indeed it seems even more pronounced. For workers with secondary education, in the first half of this decade the old-young differential was still lower than at the beginning of the period, although relative earnings of younger workers followed the general path.

This evidence unveils an increasingly steeper cross-sectional age-earnings profile starting in the mid 1990s, especially because of the worsening of initial conditions of younger cohorts. To assess how much of this differential can be accounted for by changes in the distribution of underlying socio-demographic characteristics, we estimated a set of standard cross-sectional Mincerian wage equations that control for other observed individual characteristics beyond age and education:

$$W_{it} = \alpha_t + \beta_{0t}E_{it} + \beta_{1t}E_{it}^2 + \gamma S_i + \delta X_{it} + \varepsilon_{it} \quad (2)$$

where W_{it} is monthly wage of person i at time t , E_{it} is his potential labor market experience as of t , S_i are a set of education dummies and X_{it} are controls for marital status, family size, number of income earners, relative contribution of i to household income, his relationship to the head of household, residential location and town size¹⁸. Note that by assuming a year-specific cross-sectional experience profile $\{\alpha_t, \beta_{0t}, \beta_{1t}\}$, we can interpret α_t as the initial wage of individuals entering the labor market at time t (that is, with no experience, $E_{it} = 0$).

In figure 6 we plot the average wages and estimated entry wages obtained from such regressions relative to 1977 average wages¹⁹. As a general pattern, the average entry wage grew throughout the 80s, then declined returning in the mid-1990s to the average level recorded in the late 1970s and remained fairly stable thereafter, at a level which is 30 per cent lower than in late 1980s. The decline in the intercept went together with a rise in the slope due to the growing cross-sectional gap between young and older workers. In fact, the picture shows that the average wage increase by 20 percent between the late 1970s and the early 1990s, and dropped only slightly afterwards. The gap between entry and average wage went from about 30 percent in the late 1970s to around 50 percent in 2004. The broad pattern just described holds true for both workers with compulsory and high-school education, although with some differences. For low educated individuals the rise of the entry

¹⁸ We choose not to include in the empirical model the sector of activity and the type of occupation because these are endogenous and might explain part of the differential. However, as a check we replicated the analysis allowing for sector and occupation dummies and results are unaffected.

¹⁹ The entry wage is the constant in the estimated equations; the residual class is individuals who are the main contributor to household income living in large towns in the north-west of Italy; when estimated on all educational categories, the reference class is compulsory education.

wage in the 1980s seems more sudden and the subsequent drop in the 1990s larger and more marked. New entrants with high-school degrees experienced a somewhat more prolonged growth of their entry wages during the 1980s and a more moderate and delayed subsequent decline. The entry wages of college workers followed a more erratic pattern – possibly because of the limited sample size on which estimations are obtained. Overall, after a positive trend until late 1980s the entry wages went on a markedly negative trend; differently from other educational categories, however, the average wages of college educated individuals kept increasing, gaining roughly an additional 10 percent between the late 1980s and 2004, on top of the 20 percent growth recorded between 1977 and 1989.

All in all, the observed decline in entry wages turns out to be broadly robust to changes in a wide array of underlying socio-demographic attributes over the period of interest. Note also that, insofar as such characteristics proxy for some unobserved determinant of earning (say, ability), the above results also provide further support to the conclusion that changes in the composition of the workforce along unobserved dimensions favoured by labor market reforms may not account in a significant measure for the pattern of entry wages.

3C. Changing relative supplies.

Finally, we want to address the relevance of supply-demand based explanations. The discussion in the previous sections does not take explicitly into account secular changes in relative supplies. In particular, if workers with the same education but of different ages are imperfect substitutes then changes in relative supplies would reflect into cohort effects (Freeman (1979), Welch (1979), Card and Lemieux (2001)). More formally, assume output is produced by means of a CES production function that uses educated-uneducated and young-old workers:

$$y_t = (\theta_{st} S_t^\rho + \theta_{ut} U_t^\rho)^{\frac{1}{\rho}} \text{ with } S_t = (\alpha_Y S_{Yt}^\eta + \alpha_O S_{Ot}^\eta)^{\frac{1}{\eta}} \text{ and } U_t = (\beta_Y U_{Yt}^\eta + \beta_O U_{Ot}^\eta)^{\frac{1}{\eta}}$$

where S and U are skilled and unskilled workers, Y and O stand for young and old workers, $\rho = (1 - 1/\sigma_E)$, $\eta = (1 - 1/\sigma_A)$ are function of the elasticities of substitutions between education groups and age groups. In this framework the relative wage of young and old workers of the same education group is equal to:

$$\log\left(\frac{w_{SO}}{w_{SY}}\right) = \log\left(\frac{\alpha_O}{\alpha_Y}\right) + (1 - \eta)\log\left(\frac{S_Y}{S_O}\right) \quad (3a)$$

$$\log\left(\frac{w_{UO}}{w_{UY}}\right) = \log\left(\frac{\beta_O}{\beta_Y}\right) + (1 - \eta)\log\left(\frac{U_Y}{U_O}\right) \quad (3b)$$

which depend on both the relative efficiency and on the relative employment of young with respect to old workers.

In Italy, these effects are likely to play an important role. On the one hand, the increase in education attainments in younger cohorts could have depressed the wages of young educated workers relative to those of older individuals with similar educational achievements. Between 1977 and 2004 the share of employed men with at least high school in the age group 19-30 went from 35.8 to 66 per cent; that of college graduates from 4.8 to 8.3 per cent. On the other hand, the progressive decline in cohort size could have played in the opposite direction. The share of men aged 19-30 over the population 19-60 decreased by nearly one third between the late 70s and 2004, going from 30 percent to about 20 percent. To verify whether these changes may account for the developments of the young-old wage differential in the 1990s we build on equations (3a) and (3b) and estimate the following model for the (log) average relative wages of workers of age c to that of workers aged k :

$$\log\left(\frac{w_{ct}^S}{w_{kt}^S}\right) = \alpha_c + D_t\theta_c + \beta \log\left(\frac{E_{ct}^S}{E_{kt}^S}\right) + \varepsilon_{ct}^S \quad (4)$$

where E_{ct}^S is the number of employed males with education S in age group c in year t and age is measured in 5-year intervals (21-25 to 56-60); α_c is a dummy for the age class and D_t is a dummy equal to 1 if $t < 1993$ and zero otherwise. We will interpret estimates of $\alpha_c + \theta_c$ and α_c as the wage gap between age class c and k prior and after 1993, respectively, once changes in relative employment levels have been factored out. Notice that in a competitive wage setting framework these estimates have a clear economic interpretation: they represent the (pre- and post-1993) efficiency of workers of age c relative to those of (reference) age k . Also notice that we are holding the elasticity of substitution across age groups constant in the two sub-periods. Results are reported in table 1, where the reference age class is 51-60 which is therefore excluded from the sample. In column 1 we pool relative wages for all education categories allowing only for pre- and post-93 age-class dummies and the relative employment levels. Results show that the wage gap with the reference cohort (51-60) has widened in the 90s only for the younger 21-25 and 26-30 cohorts by around 13 percentage points, from around 42% to more than 55% for the 21-25 and from 27% to almost 40% for the 26-30 year old. In columns 2 and 3 we control for education achievements accounting for education dummies (col. 2; compulsory and high-school, the residual class being “at least college”) and allowing different elasticities of substitution across education categories (col. 3): the profile of the cohort wage gaps does not change, displaying an increase for the younger cohorts of comparable magnitude with the previous specification. Note that relative employment levels turn out to be significant only for high-school graduates suggesting that workers of different ages with

compulsory schooling or with college education are close to perfect substitutes. In columns 4 to 6 we estimate equation (2) separately for each education group. Results show that in the 90s college educated young employed aged 21-30 have lost more relative to older workers with similar education as compared to individuals of the same age and lower educational achievement, the gap being almost 27 percent for 21-25 year old and 20 for 26-30 year old employees). The gap turns out to be smaller for low educated young workers, between 7.5 and 10 percent, while for high-school graduates it is above 10 percent. Similar results are obtained narrowing the reference cell to employees age 56-60 and using alternative definitions of relative supplies²⁰.

As a whole, these results suggest that changes in the relative supplies are not able to account for the widening age gap initially described. Another possibility to reconcile this evidence with economic fundamentals, is that the relative efficiency of younger cohorts, captured by the estimated coefficients (see equations 3a and 3b), has dramatically declined in the last decade at all education levels. However, we cannot think of any major event in the recent past which could plausibly account for such a decay in the efficiency content of labor along the age dimension within education specific groups.

4. Conclusions

In this paper we have drawn on two data sources to document the earnings loss suffered by young workers who entered the labour market in the 1990s. We find that the wage gap between old and young workers went from 20 percent in the late 1980s to 35 percent in the early 2000s. We find that this decline is not accounted for by developments in relative supplies of skill-age groups overtime and reflects almost falling entry real wages. Younger cohorts do not experience any catch up: their earnings appear to grow at the same rate as older cohorts at comparable ages, so that new cohorts of workers seem to have suffered a permanent loss in their relative income.

But what did prompt such a pronounced shift in the relative wages of younger cohorts?

We argue that market forces, such as relative supply developments, technological change, and the selection of less productive young workers into the labour market, are not plausible explanations for the observed pattern in the young-old wage gap. We believe that institutional arrangements should be scrutinized as possible alternatives. Although a deep investigation of this hypothesis is beyond the scope of this paper, it may be useful so sketch here how institutional factors may give account of the observed wage patterns.

²⁰ In particular, we have included women in the measures of relative supply. The implicit assumption is that men and women are perfect substitutes within age-education cells. While our prior was that the secular increase in participation and employment of women would account at least for some of the young-old gap, the results were basically unaffected by such extension.

In a system where older workers' jobs are protected and their wage is downward rigid due to institutional arrangements (namely regulation and trade unions objective function), an adverse shock to the labour market can have an asymmetric impact on old incumbent cohorts and young cohorts of workers (Freeman (1975), Brunello and Lauter (2004)). In this context, which does not seem to be too far from the Italian case, if the productivity-adjusted wage of young workers is set at the same level as the elders' wage, an adverse shock would prompt a rise in young workers' unemployment rate; instead, if the wage of new entrants is downward flexible, an adverse shock would give rise to a two tier wage system, with the real wage of younger workers set at the lower level.

The young-old unemployment rate differential in Italy grew until the end of the 1980s, reversing the trend in the early 1990s, when also the entry wage and the permanent labour income of younger cohorts started to decline²¹ (figure 7). These patterns are consistent with institutional factors. In a context where both real wages and jobs of incumbents are sheltered from labour market developments and new entrants are paid the same wage as the incumbents, a negative shock would prompt a rise in young workers unemployment. The persistent rise in youth unemployment would call for action to increase their employability. Indeed, since the late 1980s growing youth unemployment prompted the reaction of the policy maker with the introduction, for instance, of the so called "training and work contract". In addition to substantial cuts in social security contributions, it allowed firms to pay young workers an entry wage lower than the standard one, as a compensation for loosely defined firms' training obligations. In the same vein, during the 1990s several other arrangements made possible a reduction of the cost of hiring young workers. Against this backdrop, in the 1990s we observe an increasing share of new entrants that work less than 6 and 3 months in a year, a growing incidence of apprenticeships and a decaying share of white-collar jobs (figures 8 and 9).

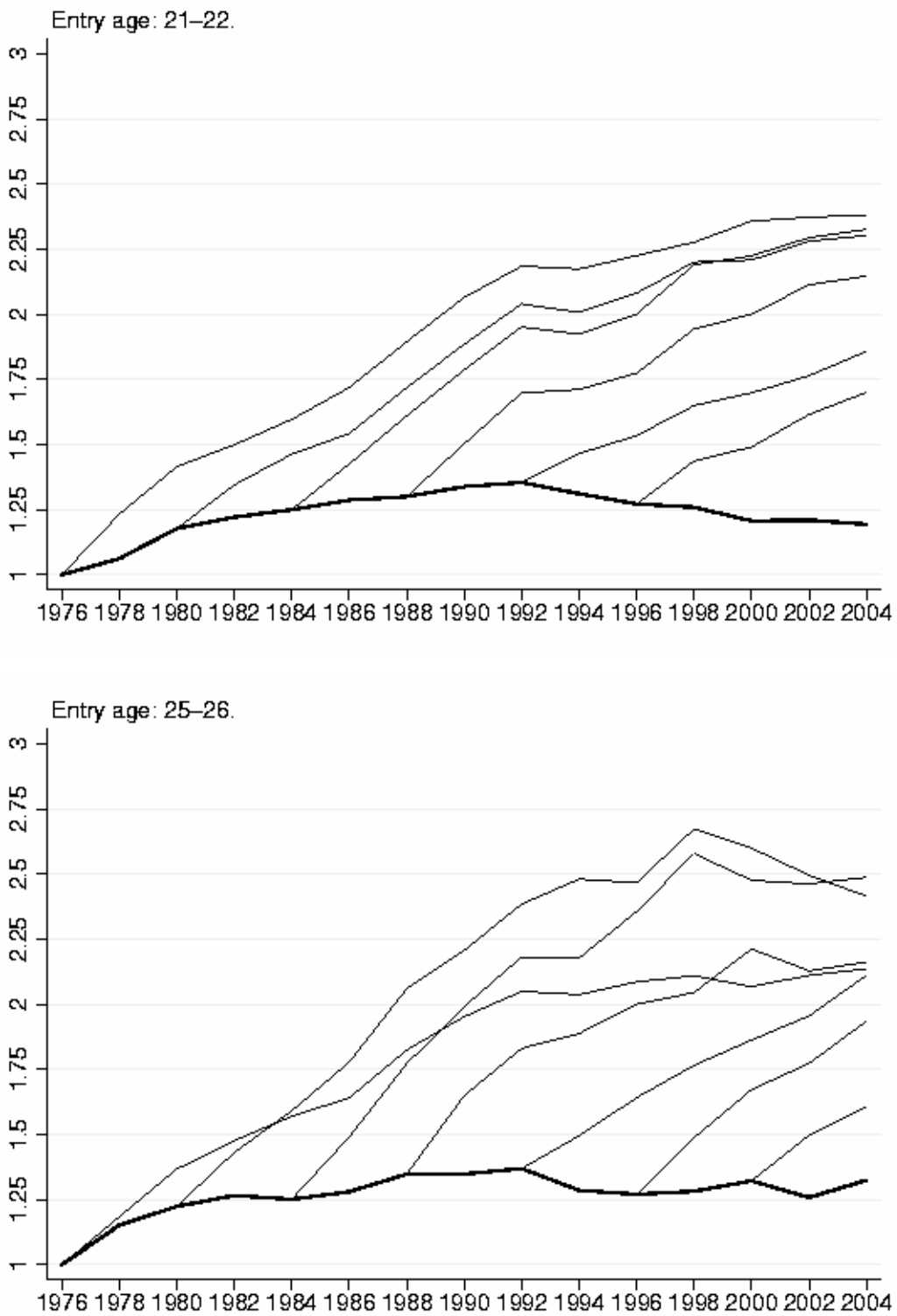
We thus conjecture that difficult labour market conditions in the early 1990s prompted overall wage moderation and drove the adoption of a two tier wage mechanism, protecting - up to a certain extent - the real wage of incumbents while allowing the employment growth of younger ones.

In itself, falling entry wages and constant returns to tenure across cohorts would be less of a concern in the presence of aggregate real wage growth. However, this was not the case: in the last 15 years the productivity slowdown and the decline in the aggregate wage share have determined a stagnation of average real wages (Bassanetti et al. (2005), Torrini (2005)). This made the decline in

²¹ We refer to self-reported information on unemployed status as available in the Survey of Household Income and Wealth of the Bank of Italy to investigate the differential over a longer horizon than that available in the Labor Force Survey.

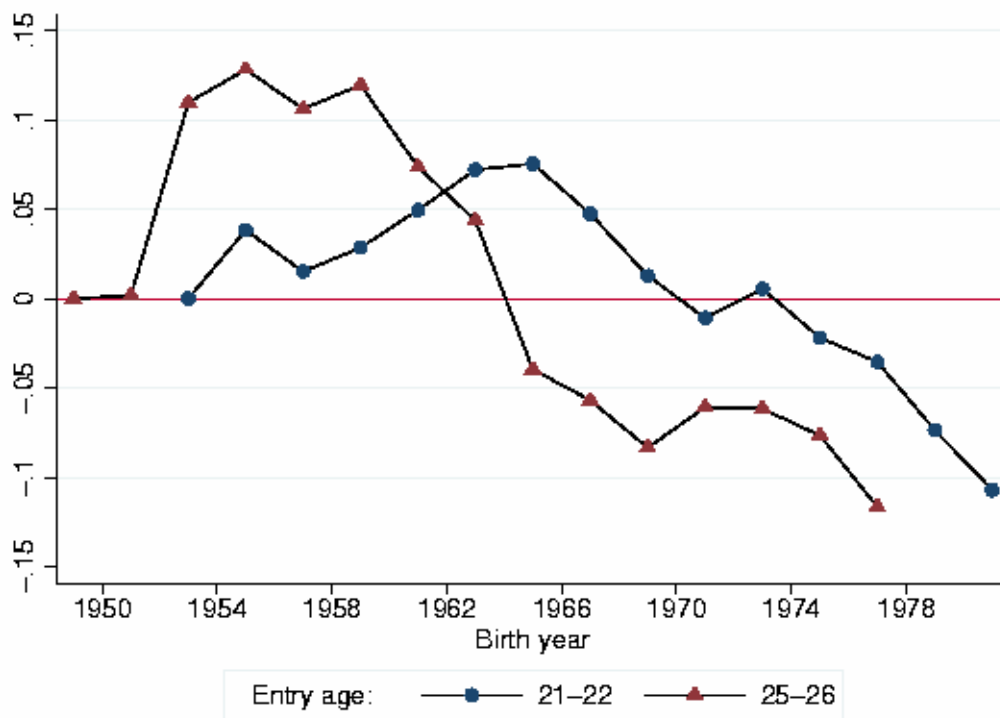
relative earnings a loss in absolute terms with respect to previous generations. Moreover, recent reforms of the pension system have created a gap between generations also in terms of pension wealth, exacerbating the generational divide: the small cohorts of young workers seem to bear the burden of high social security contributions and tax rates, slow growth of real wages and meagre pension benefits, together with more unstable careers. There is enough to justify growing concerns, even in the presence of better employment growth with respect to the past.

Figure 1: Entry wages and career profiles (index: 1976=1).



Source: authors' calculations on Inps data.
Note: Wages are deflated with the consumer price index.

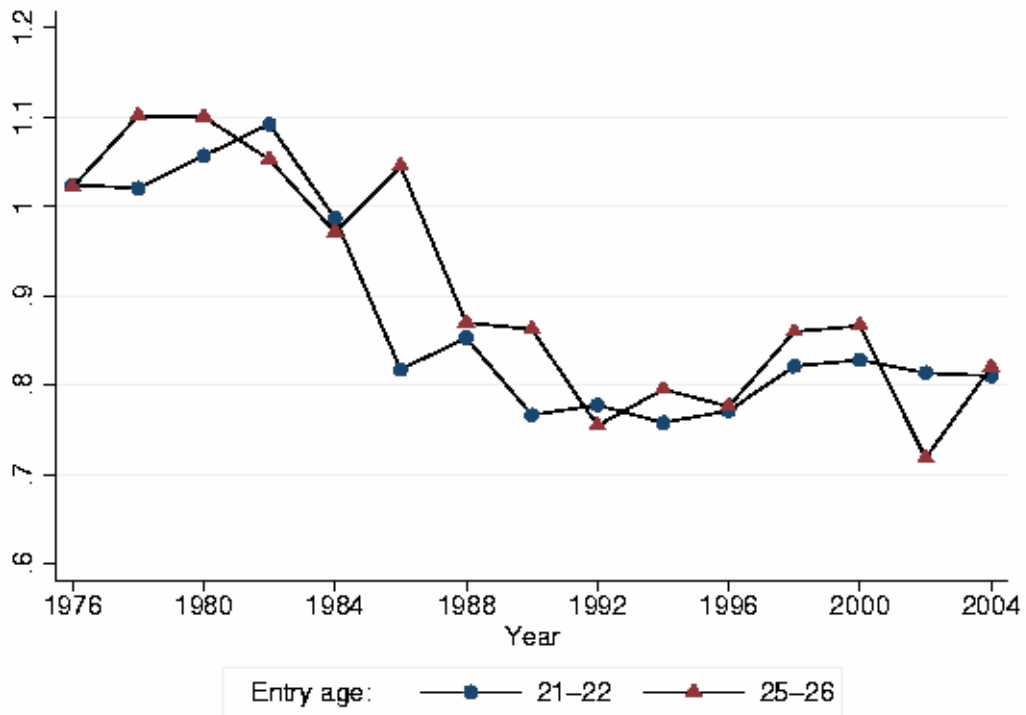
Figure 2: Entry wage differentials.



Source: authors' elaborations on Inps data.

Note: Estimated log differences in entry wages with respect to oldest cohort in entry-age class.

Figure 3: Entry wages dispersion.

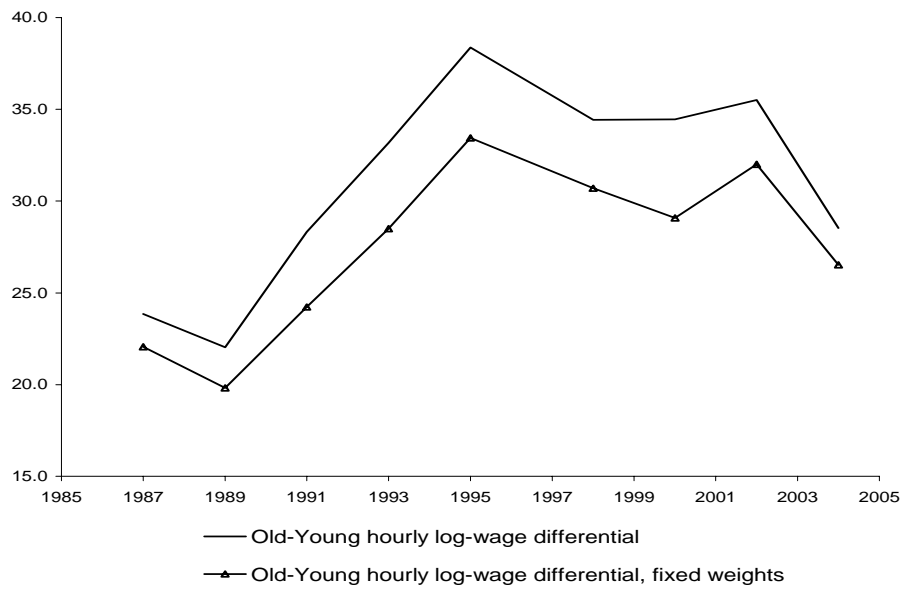
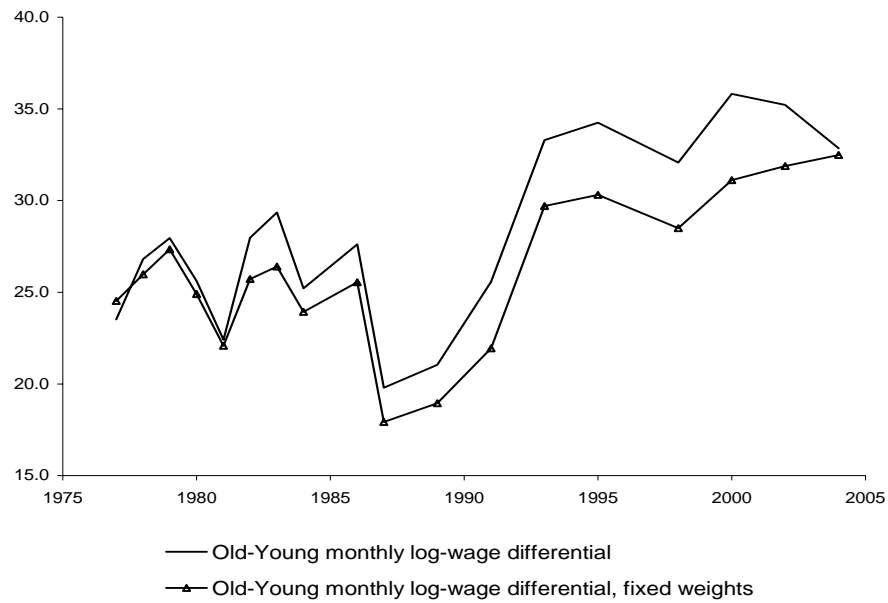


Source: authors' elaborations on Inps data.

Notes:

Top panel – coefficient of variation of log real weekly entry wages; Bottom panel – ratio of coefficient of variation of entry wages to coefficient of variation of wages in relevant year.

Figure 4: Old-young wage gap

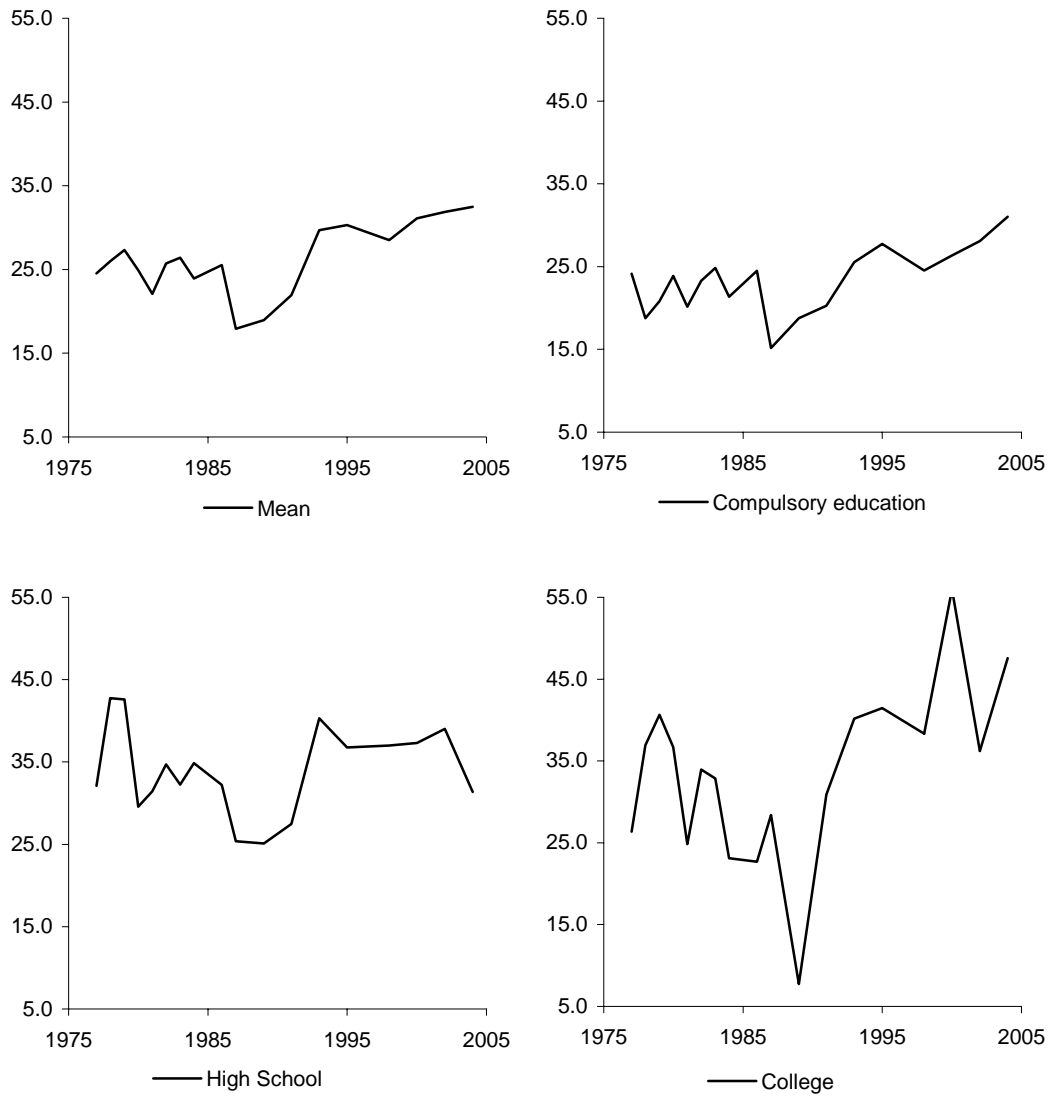


Source: authors' elaborations on Survey of Household Income and Wealth, Bank of Italy.

Notes:

(1) Old = 31-60 years old, young = 19-30 years old; (2) The survey was extensively revised in 1987; (3) Top panel – monthly after-tax wage, bottom panel – hourly after-tax wage.

Figure 5: Old-young wage gaps by education

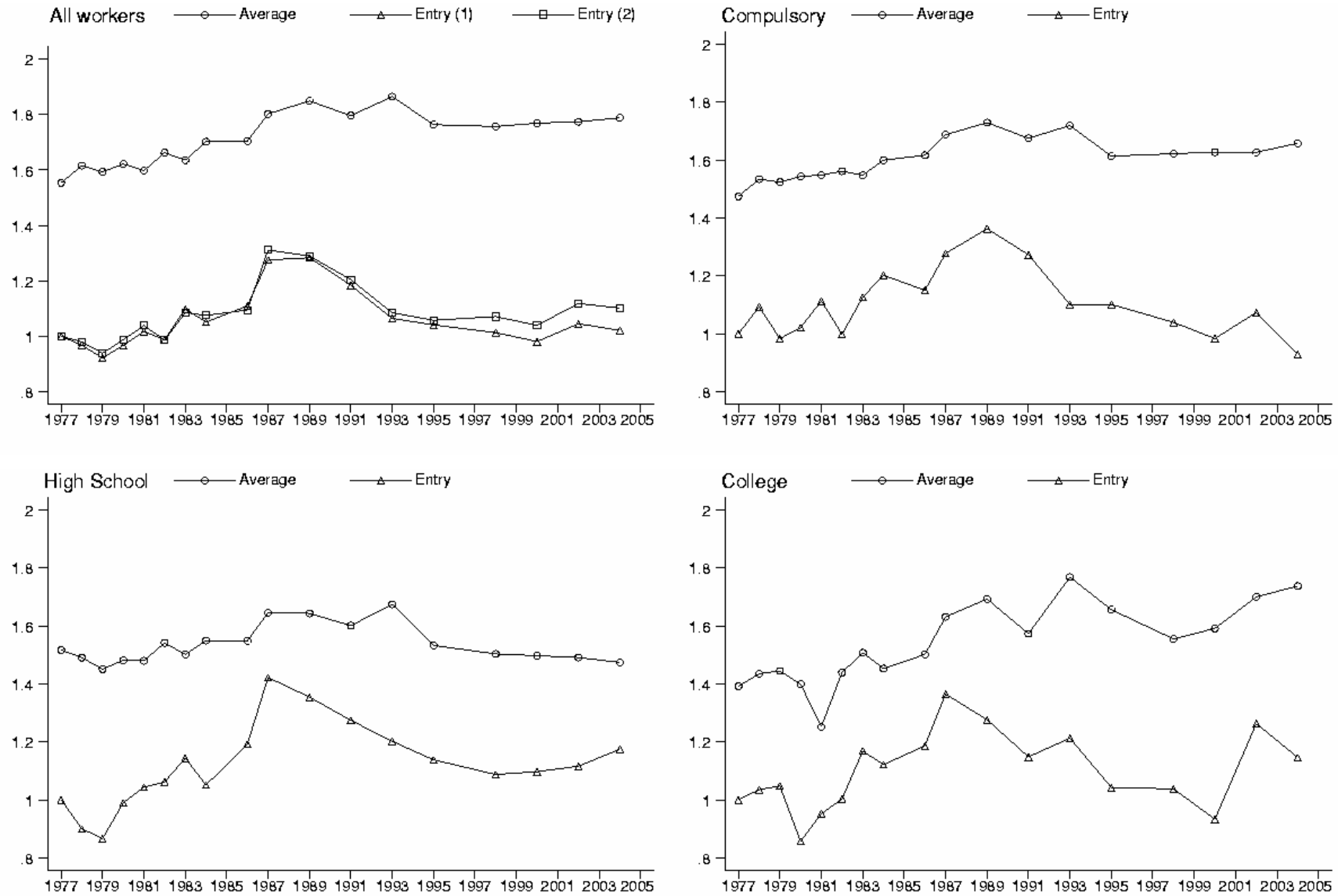


Source: authors' elaborations on Survey of Household Income and Wealth (SHIW), Bank of Italy.

Notes:

(1) Old = 31-60 years old, young = 19-30 years old; (2) The survey was extensively revised in 1987.

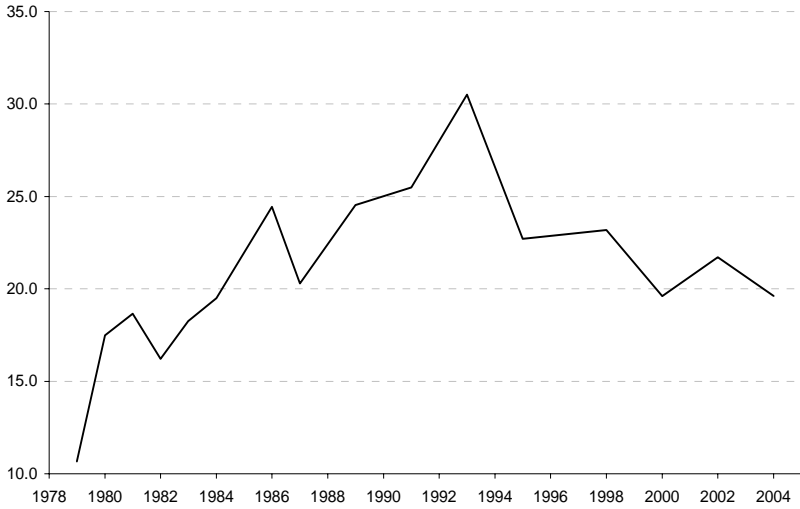
Figure 6: Estimated monthly entry wages and average monthly wages (index: entry wage in 1977=1).



Source: authors' elaborations on Survey of Household Income and Wealth (SHIW), Bank of Italy.

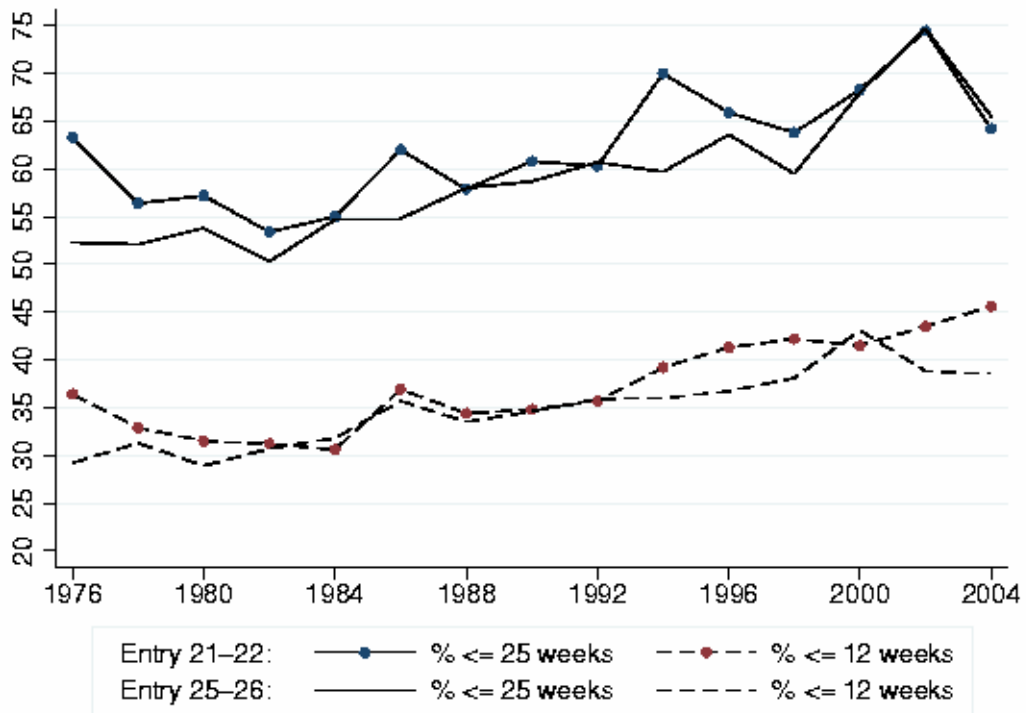
Notes: (1) Entry wages estimated from equation (2) in main text controlling also for individual education; (2) Estimated from equation (2) not controlling for education.

Figure 7: Young-old unemployment rate differential



Source: Survey of Household Income and Wealth, Bank of Italy.

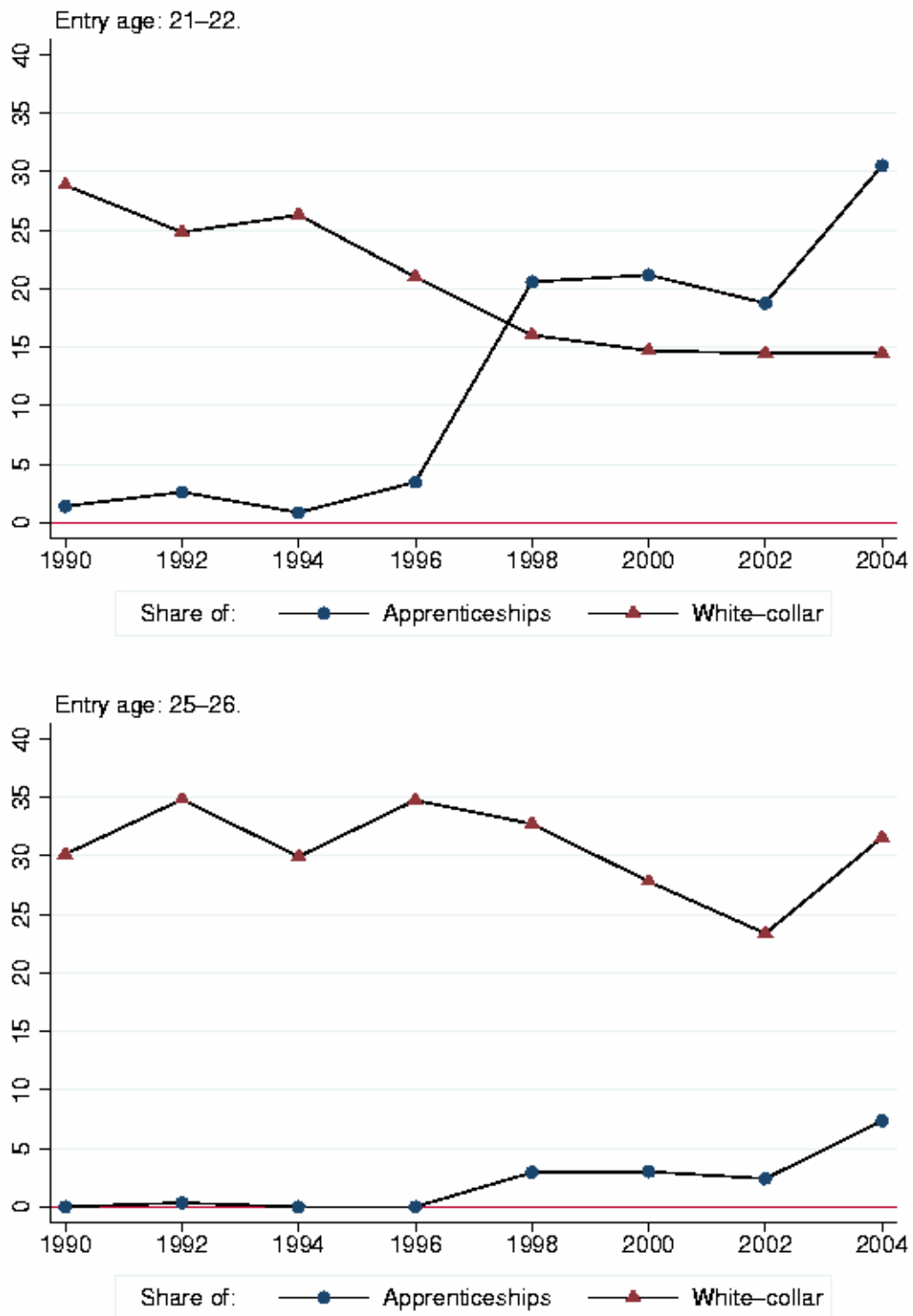
Figure 8: Short jobs for new entrants.



Source: authors' elaborations on Inps data.

Note: The figure plots the share of new entrants with less than, respectively, 25 and 12 weeks in an employment relationship in the entry year, by age at entry.

Figure 9: White-collar jobs and apprenticeships among new entrants.



Source: authors' elaborations on Inps data.
 Note: the residual category is blue-collar jobs.

Table 1: Age-education relative wages

	All education			Compulsory	High-school	Tertiary
	(1)	(2)	(3)	(4)	(5)	(6)
Age-education specific relative supply (ERS)	-0.004 (0.016)	0.011 (0.013)		0.035 (0.028)	-0.140** (0.048)	0.021 (0.048)
ERS X Compulsory			-0.092+ (0.048)			
ERS X High-school			-0.148** (0.047)			
ERS X Tertiary			0.022 (0.013)			
21-25	-0.551** (0.040)	-0.614** (0.034)	-0.629** (0.033)	-0.310** (0.030)	-0.560** (0.036)	-0.685** (0.150)
26-30	-0.397** (0.035)	-0.476** (0.028)	-0.475** (0.027)	-0.191** (0.022)	-0.399** (0.036)	-0.552** (0.061)
31-35	-0.228** (0.035)	-0.309** (0.027)	-0.294** (0.026)	-0.066** (0.017)	-0.249** (0.037)	-0.324** (0.059)
36-40	-0.112** (0.035)	-0.193** (0.027)	-0.175** (0.027)	-0.011 (0.016)	-0.145** (0.037)	-0.140* (0.060)
41-45	-0.094** (0.035)	-0.176** (0.027)	-0.157** (0.027)	0.029+ (0.016)	-0.078* (0.038)	-0.190** (0.059)
46-50	-0.024 (0.035)	-0.104** (0.028)	-0.102** (0.027)	0.020 (0.017)	-0.036 (0.036)	-0.044 (0.060)
21-25 X pre-1993	0.134** (0.047)	0.130** (0.034)	0.152** (0.033)	0.074** (0.023)	0.083 (0.051)	0.267** (0.079)
26-30 X pre-1993	0.126** (0.047)	0.124** (0.034)	0.133** (0.033)	0.098** (0.022)	0.112* (0.050)	0.201* (0.078)
31-35 X pre-1993	0.017 (0.047)	0.015 (0.034)	0.009 (0.033)	0.033 (0.024)	0.048 (0.049)	-0.007 (0.081)
36-40 X pre-1993	-0.002 (0.047)	-0.005 (0.034)	-0.014 (0.033)	0.023 (0.024)	0.002 (0.049)	-0.026 (0.087)
41-45 X pre-1993	0.042 (0.047)	0.041 (0.034)	0.031 (0.033)	0.027 (0.023)	0.018 (0.049)	0.080 (0.080)
46-50 X pre-1993	0.012 (0.047)	0.011 (0.034)	-0.000 (0.032)	0.032 (0.022)	0.005 (0.049)	-0.017 (0.080)
Compulsory		0.211** (0.017)	0.162** (0.025)			
High-school		0.037+ (0.019)	0.059** (0.020)			
Observations	198	198	198	66	66	66
R-squared	0.61	0.80	0.82	0.93	0.85	0.76

Standard errors in parentheses; + significant at 10%; * significant at 5%; ** significant at 1%.

Source: authors' elaborations on Survey of Household Income and Wealth (SHIW), Bank of Italy.

Notes:

(1) Reference age-cell is 51-60; (2) Relative supply only includes men of age-education cell; (3) Cells are 5 years age groups except reference, age 51-60; (4) Sample years:1984-2004.

References

Autor D. H., L. F. Katz and M. S. Kearney (2005) *Trends in U.S. Wage Inequality: Re-assessing the Revisionists*, NBER Working paper, n. 11627.

Bassanetti A., M. Iommi, C. Jona-Lasinio and F. Zollino (2005), *La Crescita dell'Economia Italiana negli Anni Novanta tra Ritardo Tecnologico e Rallentamento della Produttività*, Bank of Italy, Economic Working Papers, n. 539.

Bassanetti A., J. Doepke, R. Torrini and R. Zizza (2006) *Capital, Labour and Productivity: What role they play in the potential GDP weakness of France, Germany and Italy*, Deutsche Bundesbank Working paper, n. 9/2006.

Beaudry P. and D. A. Green (2000), *Cohort Patterns in Canadian Earnings: Assessing the Role of Skill Premia in Inequality Trends*, in *The Canadian Journal of Economics*, v. 33 pp. 907-936.

Beach C. M. and R. Finnie (2004), *A longitudinal analysis of earning changes in Canada*, in *The Canadian Journal of Economics*, v. 37 pp. 219-240.

Berton F., L. Pacelli and G. Segre (2005), *Tra lavoro parasubordinato e lavoro dipendente: evoluzione della carriera nel breve periodo*, in In Contini B., U. Trivellato (editors), *Eppur si muove*, il Mulino, Bologna.

Blanchard O. (2005), *European Unemployment: the Evolution of Facts and Ideas*, MIT Working paper n. 05-24.

Brandolini A., P. Casadio, P. Cipollone, M. Magnani, A. Rosolia and R. Torrini (2005), *Employment Growth in Italy: Institutional Arrangements and Market Forces*, Bank of Italy, mimeo.

Brunello G. and C. Lauer (2004), *Are Wages in Southern Europe More Flexible? The effects of cohort Size on European Earnings*, IZA Working paper, n. 1299.

Card D. and J. DiNardo (2002), *Skill-Biased Technological Change and Rising Wage Inequality: Some problems and Puzzels*, in *The Journal of Labor Economics* v. 20 pp. 733-783.

Card D. and T. Lemieux (2001), *Can Falling Supply Explain the Rising Return to college for Younger Men? A Cohort Based Analysis*, in *The Quarterly Journal of Economics*, v. 66 pp. 705-746.

Contini B. and U. Trivellato (2005), *Dinamiche e persistenze nel mercato del lavoro italiano: una sintesi*, in Contini B. and U. Trivellato (editors), *Eppur si muove*, il Mulino, Bologna.

DiNardo J., Fortin N. and T. Lemieux (1996), *Labor Market Institutions and the Distribution of Wages, 1973-1992: A Semiparametric Approach*, in *Econometrica*, vol. 64(5), pp. 1001-44.

Erickson C. L. and A. Ichino (1994), *Wage differentials in Italy: Market Forces, Institutions and Inflation*, NBER Working paper, n. 4922.

Fitzenberg B., R. Hujer, T. E. MaCurdy and R. Schnabel (2001), *Testing for uniform wage trends in West-Germany: A cohort analysis using quantile regressions for censored data*, in *Empirical Economics*, v. 26, pp. 41-86.

Freeman R. (1975) *Overinvestment in College Training? In The Journal of Human Resources*, v. 10 pp. 287-311.

Freeman R. (1979), *The Effect of Demographic Factors in Age-Earnings Profiles*, in *The Journal of Human Resources*, v. 14 pp. 289-318.

Gosling A., S. Machin and C. Meghir (2000), *The Changing Distribution of Male Wages in the UK*, in *The Review of Economic Studies*, v. 67 pp. 635-666.

Layard R., S. Nickell and R. Jackman (1991), *Unemployment*, Oxford, Oxford University Press.

Manacorda M. (2004), *Can the Scala Mobile Explain the Fall and Rise of Earnings Inequality in Italy? A Semiparametric Analysis 1977-1993*, in *Journal of Labor Economics*, v. 22 pp. 585-613.

OECD (1994), *Employment Outlook*, OECD, Paris.

Welch F. (1979), *Effects of Cohort Size on Earnings: The Baby Boom Babies' Financial Bust*, in *Journal of Political Economy*, v. 87 pp. S65-S97.

Torrini R. (2005), *Quota dei profitti e redditività del capitale in Italia: un tentativo di interpretazione*, in *Politica Economica*, v. 21, pp. 7-41.

RECENTLY PUBLISHED “TEMI” (*)

- N. 615 – *Macroeconomic uncertainty and banks' lending decisions: The case of Italy*, by Mario Quagliariello (February 2007).
- N. 616 – *Entry barriers in italian retail trade*, by Fabiano Schivardi and Eliana Viviano (February 2007).
- N. 617 – *A policy-sensible core-inflation measure for the euro area*, by Stefano Siviero and Giovanni Veronese (February 2007).
- N. 618 – *Le opinioni degli italiani sull'evasione fiscale*, by Luigi Cannari and Giovanni D'Alessio (February 2007).
- N. 619 – *Memory for prices and the euro cash changeover: An analysis for cinema prices in Italy*, by Vincenzo Cestari, Paolo Del Giovane and Clelia Rossi-Arnaud (February 2007).
- N. 620 – *Intertemporal consumption choices, transaction costs and limited participation in financial markets: Reconciling data and theory*, by Orazio P. Attanasio and Monica Paiella (April 2007).
- N. 621 – *Why demand uncertainty curbs investment: Evidence from a panel of Italian manufacturing firms*, by Maria Elena Bontempi, Roberto Golinelli and Giuseppe Parigi (April 2007).
- N. 622 – *Employment, innovation and productivity: Evidence from Italian microdata*, by Bronwyn H. Hall, Francesca Lotti and Jacques Mairesse (April 2007).
- N. 623 – *Measurement of income distribution in supranational entities: The case of the European Union*, by Andrea Brandolini (April 2007).
- N. 624 – *Un nuovo metodo per misurare la dotazione territoriale di infrastrutture di trasporto*, by Giovanna Messina (April 2007).
- N. 625 – *The forgone gains of incomplete portfolios*, by Monica Paiella (April 2007).
- N. 626 – *University drop-out: The case of Italy*, by Federico Cingano and Piero Cipollone (April 2007).
- N. 627 – *The sectoral distribution of money supply in the euro area*, by Giuseppe Ferrero, Andrea Nobili and Patrizia Passiglia (April 2007).
- N. 628 – *Changes in transport and non-transport costs: Local vs global impacts in a spatial network*, by Kristian Behrens, Andrea R. Lamorgese, Gianmarco I.P. Ottaviano and Takatoshi Tabuchi (April 2007).
- N. 629 – *Monetary policy shocks in the euro area and global liquidity spillovers*, by João Sousa and Andrea Zaghini (June 2007).
- N. 630 – *Endogenous growth and trade liberalization between asymmetric countries*, by Daniela Marconi (June 2007).
- N. 631 – *New Eurocoin: Tracking economic growth in real time*, by Filippo Altissimo, Riccardo Cristadoro, Mario Forni, Marco Lippi and Giovanni Veronese (June 2007).
- N. 632 – *Oil supply news in a VAR: Information from financial markets*, by Alessio Anzuini, Patrizio Pagano and Massimiliano Pisani (June 2007).
- N. 633 – *The reliability of EMU fiscal indicators: Risks and safeguards*, by Fabrizio Balassone, Daniele Franco and Stefania Zotteri (June 2007).
- N. 634 – *Prezzi delle esportazioni, qualità dei prodotti e caratteristiche di impresa: un'analisi su un campione di imprese italiane*, by Matteo Bugamelli (June 2007).
- N. 635 – *Openness to trade and industry cost dispersion: Evidence from a panel of Italian firms*, by Massimo Del Gatto, Gianmarco I.P. Ottaviano and Marcello Pagnini (June 2007).
- N. 636 – *The weighting process in the SHIW*, by Ivan Faiella and Romina Gambacorta (June 2007).
- N. 637 – *Emerging markets spreads and global financial conditions*, by Alessio Ciarlone, Paolo Piselli and Giorgio Trebeschi (June 2007).
- N. 638 – *Comparative advantage patterns and domestic determinants in emerging countries: An analysis with a focus on technology*, by Daniela Marconi and Valeria Rolli (September 2007).

(*) Requests for copies should be sent to:
 Banca d'Italia – Servizio Studi – Divisione Biblioteca e pubblicazioni – Via Nazionale, 91 – 00184 Rome
 (fax 0039 06 47922059). They are available on the Internet www.bancaditalia.it.

2004

- P. ANGELINI and N. CETORELLI, *Gli effetti delle modifiche normative sulla concorrenza nel mercato creditizio*, in F. Panetta (eds.), *Il sistema bancario negli anni novanta: gli effetti di una trasformazione*, Bologna, il Mulino, **TD No. 380 (October 2000)**.
- P. CHIADES and L. GAMBACORTA, *The Bernanke and Blinder model in an open economy: The Italian case*, *German Economic Review*, Vol. 5, 1, pp. 1-34, **TD No. 388 (December 2000)**.
- M. BUGAMELLI and P. PAGANO, *Barriers to investment in ICT*, *Applied Economics*, Vol. 36, 20, pp. 2275-2286, **TD No. 420 (October 2001)**.
- F. BUSETTI, *Preliminary data and econometric forecasting: An application with the Bank of Italy quarterly model*, CEPR Discussion Paper, 4382, **TD No. 437 (December 2001)**.
- A. BAFFIGI, R. GOLINELLI and G. PARIGI, *Bridge models to forecast the euro area GDP*, *International Journal of Forecasting*, Vol. 20, 3, pp. 447-460, **TD No. 456 (December 2002)**.
- D. AMEL, C. BARNES, F. PANETTA and C. SALLEO, *Consolidation and efficiency in the financial sector: A review of the international evidence*, *Journal of Banking and Finance*, Vol. 28, 10, pp. 2493-2519, **TD No. 464 (December 2002)**.
- M. PAIELLA, *Heterogeneity in financial market participation: Appraising its implications for the C-CAPM*, *Review of Finance*, Vol. 8, 3, pp. 445-480, **TD No. 473 (June 2003)**.
- F. CINGANO and F. SCHIVARDI, *Identifying the sources of local productivity growth*, *Journal of the European Economic Association*, Vol. 2, 4, pp. 720-742, **TD No. 474 (June 2003)**.
- E. BARUCCI, C. IMPENNA and R. RENÒ, *Monetary integration, markets and regulation*, *Research in Banking and Finance*, 4, pp. 319-360, **TD No. 475 (June 2003)**.
- G. ARDIZZI, *Cost efficiency in the retail payment networks: first evidence from the Italian credit card system*, *Rivista di Politica Economica*, Vol. 94, 3, pp. 51-82, **TD No. 480 (June 2003)**.
- E. BONACCORSI DI PATTI and G. DELL'ARICCIA, *Bank competition and firm creation*, *Journal of Money Credit and Banking*, Vol. 36, 2, pp. 225-251, **TD No. 481 (June 2003)**.
- R. GOLINELLI and G. PARIGI, *Consumer sentiment and economic activity: a cross country comparison*, *Journal of Business Cycle Measurement and Analysis*, Vol. 1, 2, pp. 147-170, **TD No. 484 (September 2003)**.
- L. GAMBACORTA and P. E. MISTRULLI, *Does bank capital affect lending behavior?*, *Journal of Financial Intermediation*, Vol. 13, 4, pp. 436-457, **TD No. 486 (September 2003)**.
- F. SPADAFORA, *Il pilastro privato del sistema previdenziale: il caso del Regno Unito*, *Economia Pubblica*, 34, 5, pp. 75-114, **TD No. 503 (June 2004)**.
- C. BENTIVOGLI and F. QUINTILIANI, *Tecnologia e dinamica dei vantaggi comparati: un confronto fra quattro regioni italiane*, in C. Conigliani (eds.), *Tra sviluppo e stagnazione: l'economia dell'Emilia-Romagna*, Bologna, Il Mulino, **TD No. 522 (October 2004)**.
- G. GOBBI and F. LOTTI, *Entry decisions and adverse selection: An empirical analysis of local credit markets*, *Journal of Financial Services Research*, Vol. 26, 3, pp. 225-244, **TD No. 535 (December 2004)**.
- E. GAIOTTI and F. LIPPI, *Pricing behavior and the introduction of the euro: Evidence from a panel of restaurants*, *Giornale degli Economisti e Annali di Economia*, 2004, Vol. 63, 3-4, pp. 491-526, **TD No. 541 (February 2005)**.
- L. GAMBACORTA, *How do banks set interest rates?*, NBER Working Paper, 10295, **TD No. 542 (February 2005)**.
- A. CICCONE, F. CINGANO and P. CIPOLLONE, *The private and social return to schooling in Italy*, *Giornale degli Economisti e Annali di Economia*, Vol. 63, 3-4, pp. 413-444, **TD No. 569 (January 2006)**.

- L. DEDOLA and F. LIPPI, *The monetary transmission mechanism: Evidence from the industries of 5 OECD countries*, *European Economic Review*, 2005, Vol. 49, 6, pp. 1543-1569, **TD No. 389 (December 2000)**.
- D. Jr. MARCHETTI and F. NUCCI, *Price stickiness and the contractionary effects of technology shocks*, *European Economic Review*, Vol. 49, 5, pp. 1137-1164, **TD No. 392 (February 2001)**.
- G. CORSETTI, M. PERICOLI and M. SBRACIA, *Some contagion, some interdependence: More pitfalls in tests of financial contagion*, *Journal of International Money and Finance*, Vol. 24, 8, pp. 1177-1199, **TD No. 408 (June 2001)**.
- GUIISO L., L. PISTAFERRI and F. SCHIVARDI, *Insurance within the firm*, *Journal of Political Economy*, Vol. 113, 5, pp. 1054-1087, **TD No. 414 (August 2001)**.
- R. CRISTADORO, M. FORNI, L. REICHLIN and G. VERONESE, *A core inflation indicator for the euro area*, *Journal of Money, Credit, and Banking*, Vol. 37, 3, pp. 539-560, **TD No. 435 (December 2001)**.
- F. ALTISSIMO, E. GAIOTTI and A. LOCARNO, *Is money informative? Evidence from a large model used for policy analysis*, *Economic & Financial Modelling*, Vol. 22, 2, pp. 285-304, **TD No. 445 (July 2002)**.
- G. DE BLASIO and S. DI ADDARIO, *Do workers benefit from industrial agglomeration?* *Journal of regional Science*, Vol. 45, (4), pp. 797-827, **TD No. 453 (October 2002)**.
- G. DE BLASIO and S. DI ADDARIO, *Salari, imprenditorialità e mobilità nei distretti industriali italiani*, in L. F. Signorini, M. Omiccioli (eds.), *Economie locali e competizione globale: il localismo industriale italiano di fronte a nuove sfide*, Bologna, il Mulino, **TD No. 453 (October 2002)**.
- R. TORRINI, *Cross-country differences in self-employment rates: The role of institutions*, *Labour Economics*, Vol. 12, 5, pp. 661-683, **TD No. 459 (December 2002)**.
- A. CUKIERMAN and F. LIPPI, *Endogenous monetary policy with unobserved potential output*, *Journal of Economic Dynamics and Control*, Vol. 29, 11, pp. 1951-1983, **TD No. 493 (June 2004)**.
- M. OMICCIOLI, *Il credito commerciale: problemi e teorie*, in L. Cannari, S. Chiri e M. Omiccioli (eds.), *Imprese o intermediari? Aspetti finanziari e commerciali del credito tra imprese in Italia*, Bologna, Il Mulino, **TD No. 494 (June 2004)**.
- L. CANNARI, S. CHIRI and M. OMICCIOLI, *Condizioni di pagamento e differenziazione della clientela*, in L. Cannari, S. Chiri e M. Omiccioli (eds.), *Imprese o intermediari? Aspetti finanziari e commerciali del credito tra imprese in Italia*, Bologna, Il Mulino, **TD No. 495 (June 2004)**.
- P. FINALDI RUSSO and L. LEVA, *Il debito commerciale in Italia: quanto contano le motivazioni finanziarie?*, in L. Cannari, S. Chiri e M. Omiccioli (eds.), *Imprese o intermediari? Aspetti finanziari e commerciali del credito tra imprese in Italia*, Bologna, Il Mulino, **TD No. 496 (June 2004)**.
- A. CARMIGNANI, *Funzionamento della giustizia civile e struttura finanziaria delle imprese: il ruolo del credito commerciale*, in L. Cannari, S. Chiri e M. Omiccioli (eds.), *Imprese o intermediari? Aspetti finanziari e commerciali del credito tra imprese in Italia*, Bologna, Il Mulino, **TD No. 497 (June 2004)**.
- G. DE BLASIO, *Credito commerciale e politica monetaria: una verifica basata sull'investimento in scorte*, in L. Cannari, S. Chiri e M. Omiccioli (eds.), *Imprese o intermediari? Aspetti finanziari e commerciali del credito tra imprese in Italia*, Bologna, Il Mulino, **TD No. 498 (June 2004)**.
- G. DE BLASIO, *Does trade credit substitute bank credit? Evidence from firm-level data*, *Economic notes*, Vol. 34, 1, pp. 85-112, **TD No. 498 (June 2004)**.
- A. DI CESARE, *Estimating expectations of shocks using option prices*, *The ICFAI Journal of Derivatives Markets*, Vol. 2, 1, pp. 42-53, **TD No. 506 (July 2004)**.
- M. BENVENUTI and M. GALLO, *Il ricorso al "factoring" da parte delle imprese italiane*, in L. Cannari, S. Chiri e M. Omiccioli (eds.), *Imprese o intermediari? Aspetti finanziari e commerciali del credito tra imprese in Italia*, Bologna, Il Mulino, **TD No. 518 (October 2004)**.
- L. CASOLARO and L. GAMBACORTA, *Redditività bancaria e ciclo economico*, *Bancaria*, Vol. 61, 3, pp. 19-27, **TD No. 519 (October 2004)**.
- F. PANETTA, F. SCHIVARDI and M. SHUM, *Do mergers improve information? Evidence from the loan market*, *CEPR Discussion Paper*, 4961, **TD No. 521 (October 2004)**.
- P. DEL GIOVANE and R. SABBATINI, *La divergenza tra inflazione rilevata e percepita in Italia*, in P. Del Giovane, F. Lippi e R. Sabbatini (eds.), *L'euro e l'inflazione: percezioni, fatti e analisi*, Bologna, Il Mulino, **TD No. 532 (December 2004)**.

- R. TORRINI, *Quota dei profitti e redditività del capitale in Italia: un tentativo di interpretazione*, *Politica economica*, Vol. 21, 1, pp. 7-41, **TD No. 551 (June 2005)**.
- M. OMICCIOLI, *Il credito commerciale come "collateral"*, in L. Cannari, S. Chiri, M. Omiccioli (eds.), *Imprese o intermediari? Aspetti finanziari e commerciali del credito tra imprese in Italia*, Bologna, il Mulino, **TD No. 553 (June 2005)**.
- L. CASOLARO, L. GAMBACORTA and L. GUISO, *Regulation, formal and informal enforcement and the development of the household loan market. Lessons from Italy*, in Bertola G., Grant C. and Disney R. (eds.) *The Economics of Consumer Credit: European Experience and Lessons from the US*, Boston, MIT Press, **TD No. 560 (September 2005)**.
- S. DI ADDARIO and E. PATACCHINI, *Lavorare in una grande città paga, ma poco*, in Brucchi Luchino (ed.), *Per un'analisi critica del mercato del lavoro*, Bologna, il Mulino, **TD No. 570 (January 2006)**.
- P. ANGELINI and F. LIPPI, *Did inflation really soar after the euro changeover? Indirect evidence from ATM withdrawals*, CEPR Discussion Paper, 4950, **TD No. 581 (March 2006)**.
- S. FEDERICO, *Internazionalizzazione produttiva, distretti industriali e investimenti diretti all'estero*, in L. F. Signorini, M. Omiccioli (eds.), *Economie locali e competizione globale: il localismo industriale italiano di fronte a nuove sfide*, Bologna, il Mulino, **TD No. 592 (October 2002)**.
- S. DI ADDARIO, *Job search in thick markets: Evidence from Italy*, Oxford Discussion Paper 235, Department of Economics Series, **TD No. 605 (December 2006)**.

2006

- F. BUSETTI, *Tests of seasonal integration and cointegration in multivariate unobserved component models*, *Journal of Applied Econometrics*, Vol. 21, 4, pp. 419-438, **TD No. 476 (June 2003)**.
- C. BIANCOTTI, *A polarization of inequality? The distribution of national Gini coefficients 1970-1996*, *Journal of Economic Inequality*, Vol. 4, 1, pp. 1-32, **TD No. 487 (March 2004)**.
- L. CANNARI and S. CHIRI, *La bilancia dei pagamenti di parte corrente Nord-Sud (1998-2000)*, in L. Cannari, F. Panetta (a cura di), *Il sistema finanziario e il Mezzogiorno: squilibri strutturali e divari finanziari*, Bari, Cacucci, **TD No. 490 (March 2004)**.
- M. BOFONDI and G. GOBBI, *Information barriers to entry into credit markets*, *Review of Finance*, Vol. 10, 1, pp. 39-67, **TD No. 509 (July 2004)**.
- FUCHS W. and LIPPI F., *Monetary union with voluntary participation*, *Review of Economic Studies*, Vol. 73, pp. 437-457 **TD No. 512 (July 2004)**.
- GAJOTTI E. and A. SECCHI, *Is there a cost channel of monetary transmission? An investigation into the pricing behaviour of 2000 firms*, *Journal of Money, Credit and Banking*, Vol. 38, 8, pp. 2013-2038 **TD No. 525 (December 2004)**.
- A. BRANDOLINI, P. CIPOLLONE and E. VIVIANO, *Does the ILO definition capture all unemployment?*, *Journal of the European Economic Association*, Vol. 4, 1, pp. 153-179, **TD No. 529 (December 2004)**.
- A. BRANDOLINI, L. CANNARI, G. D'ALESSIO and I. FAIELLA, *Household wealth distribution in Italy in the 1990s*, in E. N. Wolff (ed.) *International Perspectives on Household Wealth*, Cheltenham, Edward Elgar, **TD No. 530 (December 2004)**.
- P. DEL GIOVANE and R. SABBATINI, *Perceived and measured inflation after the launch of the Euro: Explaining the gap in Italy*, *Giornale degli economisti e annali di economia*, Vol. 65, 2, pp. 155-192, **TD No. 532 (December 2004)**.
- M. CARUSO, *Monetary policy impulses, local output and the transmission mechanism*, *Giornale degli economisti e annali di economia*, Vol. 65, 1, pp. 1-30, **TD No. 537 (December 2004)**.
- L. GUISO and M. PAIELLA, *The role of risk aversion in predicting individual behavior*, in P. A. Chiappori e C. Gollier (eds.) *Competitive Failures in Insurance Markets: Theory and Policy Implications*, Monaco, CESifo, **TD No. 546 (February 2005)**.
- G. M. TOMAT, *Prices product differentiation and quality measurement: A comparison between hedonic and matched model methods*, *Research in Economics*, Vol. 60, 1, pp. 54-68, **TD No. 547 (February 2005)**.
- F. LOTTI, E. SANTARELLI and M. VIVARELLI, *Gibrat's law in a medium-technology industry: Empirical evidence for Italy*, in E. Santarelli (ed.), *Entrepreneurship, Growth, and Innovation: the Dynamics of Firms and Industries*, New York, Springer, **TD No. 555 (June 2005)**.
- F. BUSETTI, S. FABIANI and A. HARVEY, *Convergence of prices and rates of inflation*, *Oxford Bulletin of Economics and Statistics*, Vol. 68, 1, pp. 863-878, **TD No. 575 (February 2006)**.

- M. CARUSO, *Stock market fluctuations and money demand in Italy, 1913 - 2003*, Economic Notes, Vol. 35, 1, pp. 1-47, **TD No. 576 (February 2006)**.
- S. IRANZO, F. SCHIVARDI and E. TOSETTI, *Skill dispersion and productivity: An analysis with matched data*, CEPR Discussion Paper, 5539, **TD No. 577 (February 2006)**.
- R. BRONZINI and G. DE BLASIO, *Evaluating the impact of investment incentives: The case of Italy's Law 488/92*. Journal of Urban Economics, Vol. 60, 2, pp. 327-349, **TD No. 582 (March 2006)**.
- R. BRONZINI and G. DE BLASIO, *Una valutazione degli incentivi pubblici agli investimenti*, Rivista Italiana degli Economisti, Vol. 11, 3, pp. 331-362, **TD No. 582 (March 2006)**.
- A. DI CESARE, *Do market-based indicators anticipate rating agencies? Evidence for international banks*, Economic Notes, Vol. 35, pp. 121-150, **TD No. 593 (May 2006)**.
- L. DEDOLA and S. NERI, *What does a technology shock do? A VAR analysis with model-based sign restrictions*, Journal of Monetary Economics, Vol. 54, 2, pp. 512-549, **TD No. 607 (December 2006)**.
- R. GOLINELLI and S. MOMIGLIANO, *Real-time determinants of fiscal policies in the euro area*, Journal of Policy Modeling, Vol. 28, 9, pp. 943-964, **TD No. 609 (December 2006)**.
- P. ANGELINI, S. GERLACH, G. GRANDE, A. LEVY, F. PANETTA, R. PERLI, S. RAMASWAMY, M. SCATIGNA and P. YESIN, *The recent behaviour of financial market volatility*, BIS Papers, 29, **QEF No. 2 (August 2006)**.

2007

- L. CASOLARO and G. GOBBI, *Information technology and productivity changes in the banking industry*, Economic Notes, Vol. 36, 1, pp. 43-76, **TD No. 489 (March 2004)**.
- M. PAIELLA, *Does wealth affect consumption? Evidence for Italy*, Journal of Macroeconomics, Vol. 29, 1, pp. 189-205, **TD No. 510 (July 2004)**.
- F. LIPPI and S. NERI, *Information variables for monetary policy in a small structural model of the euro area*, Journal of Monetary Economics, Vol. 54, 4, pp. 1256-1270, **TD No. 511 (July 2004)**.
- A. ANZUINI and A. LEVY, *Monetary policy shocks in the new EU members: A VAR approach*, Applied Economics, Vol. 39, 9, pp. 1147-1161, **TD No. 514 (July 2004)**.
- L. MONTEFORTE, *Aggregation bias in macro models: Does it matter for the euro area?*, Economic Modelling, 24, pp. 236-261, **TD No. 534 (December 2004)**.
- A. DALMAZZO and G. DE BLASIO, *Production and consumption externalities of human capital: An empirical study for Italy*, Journal of Population Economics, Vol. 20, 2, pp. 359-382, **TD No. 554 (June 2005)**.
- S. DI ADDARIO and E. PATACCHINI, *Wages and the city. Evidence from Italy*, Development Studies Working Papers 231, Centro Studi Luca d'Agliano, **TD No. 570 (January 2006)**.
- A. LOCARNO, *Imperfect knowledge, adaptive learning and the bias against activist monetary policies*, International Journal of Central Banking, v. 3, 3, pp. 47-85, **TD No. 590 (May 2006)**.
- F. LOTTI and J. MARCUCCI, *Revisiting the empirical evidence on firms' money demand*, Journal of Economics and Business, Vol. 59, 1, pp. 51-73, **TD No. 595 (May 2006)**.
- P. CIPOLLONE and A. ROSOLIA, *Social interactions in high school: Lessons from an earthquake*, American Economic Review, Vol. 97, 3, pp. 948-965, **TD No. 596 (September 2006)**.
- M. PAIELLA, *The foregone gains of incomplete portfolios*, Review of Financial Studies, Vol. 20, 5, pp. 1623-1646, **TD No. 625 (April 2007)**.

FORTHCOMING

- P. ANGELINI, *Liquidity and announcement effects in the euro area*, Giornale degli economisti e annali di economia, **TD No. 451 (October 2002)**.
- S. MAGRI, *Italian households' debt: The participation to the debt market and the size of the loan*, Empirical Economics, **TD No. 454 (October 2002)**.
- L. GUISO and M. PAIELLA, *Risk aversion, wealth and background risk*, Journal of the European Economic Association, **TD No. 483 (September 2003)**.
- G. FERRERO, *Monetary policy, learning and the speed of convergence*, Journal of Economic Dynamics and Control, **TD No. 499 (June 2004)**.

- S. MOMIGLIANO, J. Henry and P. Hernández de Cos, *The impact of government budget on prices: Evidence from macroeconomic models*, Journal of Policy Modelling, **TD No. 523 (October 2004)**.
- D. Jr. MARCHETTI and F. Nucci, *Pricing behavior and the response of hours to productivity shocks*, Journal of Money Credit and Banking, **TD No. 524 (December 2004)**.
- R. BRONZINI, *FDI Inflows, Agglomeration and host country firms' size: Evidence from Italy*, Regional Studies, **TD No. 526 (December 2004)**.
- L. GAMBACORTA, *How do banks set interest rates?*, European Economic Review, **TD No. 542 (February 2005)**.
- A. NOBILI, *Assessing the predictive power of financial spreads in the euro area: does parameters instability matter?*, Empirical Economics, Vol. 31, 4, pp. , **TD No. 544 (February 2005)**.
- P. ANGELINI and A. Generale, *On the evolution of firm size distributions*, American Economic Review, **TD No. 549 (June 2005)**.
- R. FELICI and M. PAGNINI, *Distance, bank heterogeneity and entry in local banking markets*, The Journal of Industrial Economics, **TD No. 557 (June 2005)**.
- M. BUGAMELLI and R. TEDESCHI, *Le strategie di prezzo delle imprese esportatrici italiane*, Politica Economica, **TD No. 563 (November 2005)**.
- L. GAMBACORTA and S. IANNOTTI, *Are there asymmetries in the response of bank interest rates to monetary shocks?*, Applied Economics, **TD No. 566 (November 2005)**.
- S. DI ADDARIO and E. PATACCHINI, *Wages and the city. Evidence from Italy*, Labour Economics, **TD No. 570 (January 2006)**.
- M. BUGAMELLI and A. ROSOLIA, *Produttività e concorrenza estera*, Rivista di politica economica, **TD No. 578 (February 2006)**.
- P. ANGELINI and F. LIPPI, *Did prices really soar after the euro cash changeover? Evidence from ATM withdrawals*, International Journal of Central Banking, **TD No. 581 (March 2006)**.
- S. FEDERICO and G. A. MINERVA, *Outward FDI and local employment growth in Italy*, Review of World Economics, **TD No. 613 (February 2007)**.
- F. Busetti and A. HARVEY, *Testing for trend*, Econometric Theory **TD No. 614 (February 2007)**.
- B. ROFFIA and A. ZAGHINI, *Excess money growth and inflation dynamics*, International Finance, **TD No. 629 (June 2007)**.
- M. DEL GATTO, GIANMARCO I. P. OTTAVIANO and M. PAGNINI, *Openness to trade and industry cost dispersion: Evidence from a panel of Italian firms*, Journal of Regional Science, **TD No. 635 (June 2007)**.