

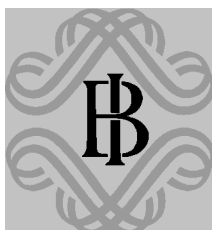
BANCA D'ITALIA

Temi di discussione

del Servizio Studi

**Bank capital and lending behaviour:
empirical evidence for Italy**

by Leonardo Gambacorta and Paolo Emilio Mistrulli



Number 486 - September 2003

La serie “Temi di discussione” intende promuovere la circolazione, in versione provvisoria, di lavori prodotti all’interno della Banca d’Italia o presentati da economisti esterni nel corso di seminari presso l’Istituto, al fine di suscitare commenti critici e suggerimenti.

I lavori pubblicati nella serie riflettono esclusivamente le opinioni degli autori e non impegnano la responsabilità dell’Istituto.

Comitato di redazione:

STEFANO SIVIERO, EMILIA BONACCORSI DI PATTI, MATTEO BUGAMELLI, FABIO BusetTI, FABIO FORNARI, RAFFAELA GIORDANO, MONICA PAIELLA, FRANCESCO PATERNÒ, ALFONSO ROSOLIA, RAFFAELA BISCEGLIA (*segretaria*)

BANK CAPITAL AND LENDING BEHAVIOUR: EMPIRICAL EVIDENCE FOR ITALY

by Leonardo Gambacorta* and Paolo Emilio Mistrulli*

Abstract

This paper investigates the existence of cross-sectional differences in the response of lending to monetary policy and GDP shocks owing to a different degree of bank capitalization. The effects on lending of shocks to bank capital that are caused by a specific (higher than 8 per cent) solvency ratio for highly risky banks are also analyzed. The paper adds to the existing literature in three ways. First, it considers a measure of capitalization (the excess capital) that is better able to control for the riskiness of banks' portfolios than the well-known capital-to-asset ratio. Second, it disentangles the effects of the "bank lending channel" from those of the "bank capital channel" in the case of a monetary shock; it also provides an explanation for asymmetric effects of GDP shocks on lending based on the link between bank capital and risk aversion. Third, it uses a unique dataset of quarterly data for Italian banks over the period 1992-2001; the full coverage of banks and the long sample period helps to overcome some distributional bias detected for other available public datasets. The results indicate that well-capitalized banks can better shield their lending from monetary policy shocks as they have easier access to non-deposit fund-raising consistently with the "bank lending channel" hypothesis. A "bank capital channel" is also detected, with stronger effects for cooperative banks that have a larger maturity mismatch. Capitalization also influences the way banks react to GDP shocks. Again, the credit supply of well-capitalized banks is less pro-cyclical. The introduction of a specific solvency ratio for highly risky banks determines an overall reduction in lending.

JEL classification: E44, E51, E52

Keywords: Basel standards, monetary transmission mechanisms, bank lending, bank capital.

Index

1. Introduction.....	7
2. Bank capital and the business cycle.....	10
3. Some stylized facts on bank capital.....	15
4. The econometric model and the data.....	19
5. The results.....	23
5.1 Robustness checks.....	26
6. Conclusions.....	27
Appendix 1 – A simple theoretical model.....	30
Appendix 2 - Description of the database.....	38
Tables and figures.....	40
References.....	45

* Bank of Italy, Economic Research Department.

1. Introduction¹

The role of bank capital in the monetary transmission mechanism has been largely neglected by economic theory. The traditional interpretation of the “bank lending channel” focuses on the effects of reserve requirements on demand deposits, while no attention is paid to bank equity; bank capital is traditionally interpreted as an “irrelevant” balance-sheet item (Friedman, 1991; Van den Heuvel, 2003). Moreover, in contrast with the wide literature that analyzes the link between risk aversion and wealth, there is scarce evidence on the relationship between a bank’s risk attitude and its level of capitalization. This lack of attention contrasts with the importance given, at both an empirical and a theoretical level, to the macroeconomic consequences of the Basel Capital Accord that designed risk-based capital requirements for banks.²

The main aim of this paper is to study how bank capital may influence the response of lending to monetary policy and GDP shocks. There are two ways in which bank capital may affect the impact of monetary shocks: through the traditional “bank lending channel” and through a more “direct” mechanism defined “bank capital channel”. Both channels rest on the failure of the Modigliani-Miller theorem of financial structure irrelevance but for different reasons as we will discuss.

Bank capitalization influences the “bank lending channel” owing to imperfections in the market for debt. In particular, bank capital influences the capacity to raise uninsured forms of debt and therefore banks’ ability to contain the effect of a deposit drop on lending. The mechanism is the following. After a monetary tightening, reservable deposits drop and banks raise non-reservable debt in order to protect their loan portfolios. As these non-reservable funds are typically uninsured (i.e. bonds or CDs), banks encounter an adverse

¹ The authors are grateful to Giorgio Gobbi, Simonetta Iannotti, Francesco Lippi, Silvia Magri, Alberto Franco Pozzolo, Skander Van den Heuvel, Stefano Siviero and an anonymous referee for useful comments. We are also particularly grateful to the participants in the Basel Committee on Banking Supervision conference “Banking and Financial Stability” (Rome, 20-21 March, 2003). The model owes a lot to discussions with Michael Ehrmann, Jorge Martinez-Pagès, Patrick Sevestre and Andreas Worms. The opinions expressed in this paper are those of the authors only and in no way involve the responsibility of the Bank of Italy. E-mail gambacorta.leonardo@insedia.interbusiness.it; mistrulli.paoloemilio@insedia.interbusiness.it.

² See Basel Committee on Banking Supervision (1999) for a reference on the subject.

selection problem (Stein, 1998); low-capitalized banks, perceived to be more risky by the market, have greater difficulty issuing bonds and therefore are less able to shield their credit relationships (Kishan and Opiela, 2000).

The “bank capital channel” is based on three hypotheses: 1) an imperfect market for bank equity (Myers and Majluf, 1984; Stein, 1998; Calomiris and Hubbard, 1995; Cornett and Tehranian, 1994); 2) a maturity mismatch between assets and liabilities that exposes banks to interest rate risk; 3) a “direct” influence of regulatory capital requirements on the supply of credit. The “bank capital channel” works in the following way. After an increase in market interest rates, a lower fraction of loans can be renegotiated with respect to deposits (loans are mainly long-term, while deposits are typically short-term): banks therefore bear a cost due to the maturity transformation performed that reduces profits and then capital. If equity is sufficiently low (and it is too costly to issue new shares), banks reduce lending because prudential regulations establish that capital has to be at least a minimum percentage of loans (Thakor, 1996; Bolton and Freixas, 2001; Van den Heuvel, 2001a).

Bank capitalization may also influence the reaction of credit supply to output shocks. This effect depends upon the link between bank capital and risk aversion. A part of the literature argues that well-capitalized banks are less risk-averse. In the presence of a solvency regulation, banks maintain a higher level of capital just because their lending portfolios are riskier (Kim and Santomero, 1988; Rochet, 1992; Hellman, Murdock and Stiglitz, 2000). In this case we should observe that well-capitalized banks react more to business cycle fluctuations because they have selected *ex-ante* a lending portfolio with higher return and risk. On the contrary, other models stress that well-capitalized banks are more risk-averse because the implicit subsidy that derives from deposit insurance is a decreasing function of capital (Flannery, 1989; Genotte and Pyle, 1991) or because they want to limit the probability of not meeting capital requirements (Dewatripont and Tirole, 1994). In this case, since the quality of the loan portfolio of well-capitalized banks is comparatively better they should reduce their lending supply by less in bad states of nature.

The empirical investigations concerning the effect of bank capital on lending mostly refer to the US banking system (Hancock, Laing and Wilcox, 1995; Furfine, 2000; Kishan and Opiela, 2000; Van den Heuvel, 2001b). All these works underline the relative importance of bank capital in influencing lending behaviour. The literature on European

countries, instead, is far from conclusive; Altunbas et al. (2002) and Ehrmann et al. (2003) find that lending of under-capitalized banks suffers more from monetary tightening, but their results are not significant at conventional values for the main European countries.

This paper presents three novelties with respect to the existing literature. The first one is the definition of capitalization; we define banks' capitalization as the amount of capital that banks hold in excess of the minimum required to meet prudential regulation standards. This definition allows us to overcome some problems of the capital-to-asset ratio generally used in the existing literature. Since minimum capital requirements take into account the quality of banks' balance sheet assets, the excess capital represents a cushion that controls for the level of banks' risk and indicates a lower probability of a bank defaulting. Moreover, excess capital is a direct measure of banks' capacity to expand credit because it takes into consideration prudential regulation constraints. The second novelty lies in the attempt to analyze the effects of capitalization on banks' response to various economic shocks. In the case of monetary shocks we separate the effects of the "bank lending channel" from those of the "bank capital channel". We provide a tentative explanation of the effect of GDP shocks on lending based on the link between bank capital and risk aversion. Exogenous capital shocks that refer to specific solvency ratios that supervisors set for very risky banks are also analyzed. The third novelty is the use of a unique dataset of quarterly data for Italian banks over the period 1992-2001; the full coverage of banks and the long sample period should overcome some distributional bias detected for other available public datasets. To tackle problems in the use of dynamic panels, all the models have been estimated using the GMM estimator suggested by Arellano and Bond (1991).

The results indicate that well-capitalized banks can better shield their lending from monetary policy shocks as they have an easier access to non-deposit fund raising, consistently with the "bank lending channel" hypothesis. In this respect, the bank capitalization effect is greater for non-cooperative banks, which are more dependent on non-deposit forms of external funds. Capitalization also influences the way banks react to GDP shocks. Again, the credit supply of well-capitalized banks is less pro-cyclical. This result indicates that well-capitalized banks are more risk-averse and, as their borrowers are less risky, suffer less from economic downturns via loan losses. Moreover, well-capitalized banks can better absorb temporarily financial difficulties on the part of their borrowers and

preserve long-term lending relationships. Exogenous capital shocks, caused by the introduction of a specific (higher than 8 per cent) solvency ratio for highly risky banks determine an overall reduction of 20 per cent in lending after two years. This result is consistent with the hypothesis that it costs less to adjust lending than capital.

The remainder of the paper is organized as follows. The next section reviews the literature and explains the main link between capital requirements and banks' loan supply. Section 3 discusses some stylized facts concerning bank capital in Italy. In Section 4 we describe the econometric model and the data. Section 5 presents our empirical results and the robustness checks. The last section summarizes the main conclusions.

2. Bank capital and the business cycle

There are several theories that explain how bank capital could influence the propagation of economic shocks. All these theories suggest the existence of market imperfections that modify the standard results of the Modigliani and Miller theorem. Broadly speaking, if capital markets were perfect a bank would always be able to raise funds (debt or equity) in order to finance lending opportunities and its level of capital would have no role.

The aim of this Section is to discuss how bank capital can influence the reaction of bank lending to two kinds of economic disturbances: monetary policy and GDP shocks.

The first kind of shock occurs when a monetary tightening (easing) determines a reduction (increase) of reservable deposits and an increase (reduction) of market interest rates. In this case, there are two ways in which bank capital can influence the impact of monetary policy changes on lending: through the traditional "bank lending channel" and through a more "direct" mechanism defined as "bank capital channel".

Both mechanisms are based on adverse selection problems that affect banks' fund-raising: the "bank lending channel" relies on imperfections in the market for bank debt (Bernanke and Blinder, 1988; Stein, 1998; Kishan and Opiela, 2000), while the "bank capital channel" concentrates on an imperfect market for bank equity (Thakor, 1996; Bolton and Freixas, 2001; Van den Heuvel, 2001a).

According to the "bank lending channel" thesis, a monetary tightening has effect on

bank lending because the drop in reservable deposits cannot be completely offset by issuing other forms of funding (or liquidating some assets). Therefore, a necessary condition for the “bank lending channel” to be operative is that the market for non-reservable bank liabilities should not be frictionless. On the contrary, if banks had the possibility to raise, limitless, CDs or bonds, which are not subject to reserve requirements, the “bank lending channel” would be ineffective. This is the point of the Romer and Romer (1990) critique.

On the contrary, Kashyap and Stein (1995, 2000) and Stein (1998) claim that the market for bank debt is imperfect. Since non-reservable liabilities are not insured and there is an asymmetric information problem about the value of banks’ assets, a “lemon’s premium” is paid to investors. In this case, bank capital has an important role because it affects banks’ external ratings and provides the investors with a signal about their creditworthiness. This hypothesis implies that banks are subject to “market discipline”. Therefore the cost of non-reservable funding (i.e. bonds or CDs) would be higher for low-capitalized banks because they have less equity to absorb future losses and are then perceived as more risky by the market.³ Low-capitalized banks are therefore more exposed to asymmetric information problems and have less capacity to shield their credit relationships (Kishan and Opiela, 2000).⁴

It is important to note that this effect of bank capital on the “bank lending channel” cannot be captured by the capital-to-asset ratio. This measure, generally used by the existing literature to analyze the distributional effects of bank capitalization on lending, does not take into account the riskiness of a bank portfolio. A relevant measure is instead the excess capital, that is, the amount of capital that banks hold in excess of the minimum required to meet prudential regulation standards. Since minimum capital requirements are determined by the quality of banks’ balance-sheet assets (for more details see Section 3), the excess capital represents a risk-adjusted measure of bank capitalization that gives more indications regarding the probability of a bank default. Moreover, the excess capital is a relevant

³ Empirical evidence has found that lower capital levels are associated with higher prices for uninsured liabilities. See, for example, Ellis and Flannery (1992) and Flannery and Sorescu (1996).

⁴ The total effect also depends on the amount of bank liquidity. Other things being equal, banks with a high buffer of liquid assets should cut back their lending less in response to a monetary tightening. This result indicates that banks with a large amount of very liquid assets have the option of selling them to shield loan portfolio (Kashyap and Stein, 2000; Ehrmann et al. 2003).

measure of the bank's ability to expand credit because it directly controls for prudential regulation constraints.

The "bank capital channel" is based on three hypotheses. First, there is an imperfect market for bank equity: banks cannot easily issue new equity because of the presence of agency costs and tax disadvantages (Myers and Majluf, 1984; Cornett and Tehranian, 1994; Calomiris and Hubbard, 1995; Stein, 1998). Second, banks are subject to interest rate risk because their assets typically have a longer maturity than liabilities (maturity transformation). Third, regulatory capital requirements limit the supply of credit (Thakor, 1996; Bolton and Freixas, 2001; Van den Heuvel, 2001a).

The mechanism is the following. After an increase in market interest rates, a smaller fraction of loans can be renegotiated compared with deposits (loans are mainly long-term, while deposits are typically short-term): banks therefore have to bear a cost connected with the maturity mismatching that reduces profits and then capital. If equity is sufficiently low and it is too costly to issue new shares, banks reduce lending, otherwise they fail to meet regulatory capital requirements.

The "bank capital channel" can also be at work if capital requirements are currently not binding. Van den Heuvel (2001a) shows that low-capitalized banks may optimally forgo lending opportunities now in order to lower the risk of capital inadequacy in the future. This is interesting because in reality, as shown in Section 3, most banks are not constrained at any given time. It is also worth noting that, according to the "bank capital channel", a negative effect of a monetary tightening on bank lending could also be generated if banks face a perfect market for non-reservable liabilities.

Bank capitalization may also influence the way lending supply reacts to output shocks. Bank capitalization, that is bank wealth, is linked to risk-taking behaviour and then to banks' portfolio choices; this means that lending by banks with different degrees of capitalization (or risk aversion) may react differently to economic downturns. While a wide stream of literature on financial intermediation has analyzed the relation between bank capitalization

and risk-taking behaviour,⁵ the nature of this link is still quite controversial. A first class of models (Kim and Santomero, 1988; Rochet, 1992; Hellman, Murdock and Stiglitz, 2000) argue that well-capitalized banks are less risk-averse. In the presence of a solvency regulation, well-capitalized banks detain a higher level of capital just because their lending portfolio is riskier. In this case we should observe that well-capitalized banks react more to business cycle fluctuations because they have selected “ex-ante” a lending portfolio with higher return and risk.

In Kim and Santomero (1988), the introduction of a solvency regulation entails inefficient asset allocation by banks. The total volume of their risky portfolio will decrease (as a direct effect of the solvency regulation), but its composition will be distorted in the direction of more risky assets (recomposition effect). In this model, the probability of failure increases after capital requirements are introduced because the direct effect is dominated by the recomposition of the risky portfolio. Along the same lines, Hellman, Murdock and Stiglitz (2000) argue that higher capital requirements are the cause of excessive risk-taking by banks. Since capital regulation increases the cost of funding for banks (equity is more costly than debt) and lower the value of the bank, its management reacts by increasing the level of credit portfolio risk.⁶

There are three main implications of this class of models. First, well-capitalized banks are less risk averse because regulation creates an incentive to do so. Second, risk-based capital standards would become efficient only if the weights that reflect the relative riskiness

⁵ The relation between wealth and attitude to risk is central to many fields of economics. As far as credit markets are concerned, this relation has largely been employed to analyze the role of collateral in mitigating asymmetric information problems between banks and borrowers (see Coco, 2000, for a recent survey of this subject).

⁶ A different explanation is given by Besanko and Kanatas (1996). They depart from Kim and Santomero (1988) and Hellman, Murdock and Stiglitz (2000) by allowing for “outside equity” (owned by shareholders who are not in control of the firm) and by stressing the role of managerial incentive schemes in a “moral hazard” framework. Modeling asset-substitution (among assets with different risk profiles) and effort aversion moral hazard at the same time, they show that while a higher capital requirement reduces asset-substitution problems, it lowers the incentive to exert the optimal amount of effort. This result rests on what they call a “dilution effect”: if bank insiders are wealth-constrained or risk-averse, more stringent capital standards dilute insiders’ ownership share, and thus their marginal benefit of effort. The main conclusion of the model is that, if the effort-aversion effect is larger than the asset-substitution effect, higher capital standards induce banks to take more risk on average. Gorton and Rosen (1996) argue that excessive risk taking among well-capitalized banks could also reflect exogenous conditions such as managerial incompetence or a lack of lending opportunities.

of assets in the solvency ratio were market-based (Kim and Santomero, 1988).⁷ In this case distortion in the banks' asset allocation disappears and capital requirements reflect the effective risk taking of the bank.⁸ Third, these models are not able to explain why banks typically detain excess capital with respect to the minimum requirements imposed by the supervisory authority (for example, see van den Heuvel (2003) for the US). As we will see, this is a crucial point when studying heterogeneity in the behaviour of banks as a result of capitalization.

A different result is reached by other models based on a portfolio approach (Flannery, 1989; Gennotte and Pyle, 1991) for which well-capitalized banks are more risk-averse. They support this result by studying the relation between deposit insurance schemes and the risk-taking attitude of banks. If the insurance premium undervalues banks' risk, the implicit subsidy from deposit insurance is a decreasing function of capital. That is, highly capitalized banks are more risk-averse. This means that, since the quality of the loan portfolio of well-capitalized banks is comparatively higher, such banks suffer fewer losses in the event of an economic downturn; the small amount of write-offs allows well-capitalized banks to reduce their lending supply by less in bad states of nature. In this class of model the presence of capital requirements attenuates the distortions caused by deposit guarantees: banks cannot limit the amount of equity to obtain the maximum implicit subsidy from deposit insurance. An implication of these models is that if a bank has excess capital with respect to the minimum requirements it is more risk-averse because it evaluates its risk more cautiously than the supervisory authority.

The hypothesis that well-capitalized banks are more risk-averse can also be supported by interpreting excess capital as a cushion against contingencies. When a solvency regulation is introduced, banks have to face the possibility that they could fail to meet capital

⁷ Thakor (1996) proves that a more stringent risk-based standard may reduce banks' willingness to screen risky borrowers. In this sense, market pricing of uninsured liabilities (the so-called "market discipline") could help avoid excessive risk-taking by undercapitalized banks. More cautious conclusions in evaluating the potential effects of subordinated debt requirement are developed in Calem and Rob (1999). Sheldon (1996) provides weak evidence that the implementation of the Basel Accord had a risk-increasing impact on bank portfolios.

⁸ Analyzing a model with limited liability (capital can not be negative as in Kim and Santomero, 1988) Rochet (1992) suggests introducing an additional regulation, namely a minimum level of capital, independent of the size of bank assets.

requirements and that, if this really happens, they could lose part of their control in favour of supervisors (Dewatripont and Tirole, 1994; Repullo, 2000; Van den Heuvel, 2001a). Therefore, banks choose a certain excess capital at time t taking into account the possibility that in the future they might not be able to meet regulatory standards. The amount of capital banks hold in excess with respect of capital requirement depends on their (global) risk aversion that is independent of the initial level of wealth.⁹ Differences in (global) risk aversion among banks may emerge not only because of heterogeneity in corporate governance but also, and more substantially, for institutional reasons. In Italy, as we will discuss in the following section, the institutional characteristics of credit cooperative banks (CCBs) are very different from those of limited companies. If we allow for heterogeneity in (global) risk aversion among banks, the excess capital becomes a crucial measure to capture differences in the risk profile of banks' portfolios. The simple capital-to-asset ratio is no longer informative because it does not capture the constraint due to regulation.

3. Some stylized facts on bank capital

The 1988 Basel Capital Accord and its subsequent amendments require capital to be above a threshold that is defined as a function of several types of risk. In other words, it is possible to distinguish between the default risk (credit risk) and the risk related to adverse fluctuations in asset market prices (market risk).¹⁰ In Italy, the capital requirements for credit risks were introduced in 1992, those for market risks in 1995.

As far as credit risk is concerned, capital must be at least equal to 8 per cent of the total amount of risk-weighted assets (solvency ratio).¹¹ A bank-specific solvency ratio (higher

⁹ A simple way to say that bank i is globally more averse than bank j is to assume that the objective function of bank i is a concave transformation of bank j objective function.

¹⁰ In general, the need for capital requirements arises to overcome moral hazard problems by inducing banks to detain a "socially optimal" amount of capital. In the event of a crisis, the lower is the leverage ratio, the higher the probability that a bank will fail to pay back its debts. The moral hazard problem is amplified in the presence of a deposit insurance system. For a more detailed explanation of the rationale for capital requirements, see among others, Giammarino, Lewis and Sappington (1993), Dewatripont and Tirole (1994), Vlaar (2000) and Rime (2001).

¹¹ In Italy, regulation establishes a minimum capital requirement as a function of the amount of risk-weighted assets (and certain off-balance sheet assets). Assets are classified into five buckets with different risk weights. Risk weights are zero for cash and government bonds, 20 per cent for bank claims on other banks, 50 per cent for mortgage lending, 100 per cent for other loans to the private sector, 200 per cent for participating in

than 8 per cent) can be set in the case of a poor performance in terms of asset quality, liquidity and organization. On the contrary, the ratio decreases to 7 per cent for banks belonging to a banking group that meets an 8 per cent solvency ratio on a consolidated basis. Capital requirements against market risks are related to open trading positions in securities, foreign exchange and commodities.¹²

Banks have to hold an amount of capital that must be at least equal to the sum of credit and market risk capital requirements.¹³

One of the objectives of the 1988 Basel Accord was to increase banks' capitalization (Basel Committee on Banking Supervision, 1999). We observe that banks' capitalization increased during the period that preceded the implementation of the Basel Accord in Italy and it declined slightly afterwards (Fig. 1). It seems, therefore, that banks constituted sufficient capital and reserve endowments before risk-based capital requirements were implemented. This apparently supports the thesis that bank capital is sticky.

Large banks' capitalization has been constantly below the average.¹⁴ By contrast, credit cooperative banks (CCBs), which are typically very small, are better capitalized than

highly risky non-financial firms (firms that have recorded losses in the last two years). Until September 1996 the weight of bad loans was also equal to 200 per cent. For any bank j its capital requirement is defined as:

$$k_j \cdot WA_j = k_j \cdot \sum_{i=1}^5 \alpha_i A_{ij}$$

where k_j is the *solvency ratio*, WA_j the total amount of risk-weighted assets, α_i is the risk weight for asset type i and A_{ij} is the unweighted amount of the i -type asset bank j holds.

¹² Market risk capital requirements are computed on the basis of a quite complex algorithm. Regulations distinguish between a "specific risk" and a "general risk". The former refers to losses that can be determined by market price fluctuations, which are specifically related to the issuers' economic conditions. The latter is related to asset price fluctuations correlated to market developments ("systematic risk"). The capital requirement depends on issuer characteristics and on the asset maturity. "Ceteris paribus", the capital requirement against market risks is lower for banks belonging to a group.

¹³ Prudential regulations allow banks to meet capital requirements by holding an amount of capital that is defined as the sum of the so-called "Tier 1" and "Tier 2" capital (regulatory capital). "Tier 1" or "core capital" includes stock issues, reserves and provisions for "general banking risks"; "Tier 2" or "supplementary" capital consists of general loan loss provisions, hybrid instruments and subordinated debt. "Tier 1" capital is required to be equal at least to 50 per cent of the total. Subordinated debts must not exceed 50 per cent of "Tier 1" capital. Recently, banks have been allowed to issue subordinated debts specifically to face market risk requirements (the so-called "Tier 3" capital).

¹⁴ We have considered large banks to be those with total assets of more than 10 billions euro in September 2001. To control for mergers we have assumed that consolidation took place at the beginning of the period (see Appendix 2 for further details of merger treatment).

other banks. The different degree of capitalization among Italian banks could reflect a diverse capacity to issue capital. As capital is relatively costly, banks minimize their holdings, subject to different “adjustment cost” constraints. This implies that, “*ceteris paribus*”, capitalization is smaller for those banks that incur lower costs in order to adjust their level of capital. As we have pointed in Section 2, differences in the level of capitalization also depend on banks’ risk aversion related to different corporate governance and institutional settings.

For all groups of banks the excess capital (the amount that banks hold in excess of the minimum regulatory capital requirement) has always been always much greater than zero. This is consistent with the hypothesis that capital is difficult to adjust and banks create a cushion against contingencies. If we define as x_{it} the ratio between regulatory capital and capital requirement this should be close to one if banks choose their capital endogenously to meet the constraint imposed by the supervision authority. In reality, we observe that this ratio is significantly greater than one (Fig. 2). The cushion is smaller for large banks than for CCBs. On the basis of the literature discussed in the previous section, this stylized fact is consistent with the hypothesis that small banks are more risk averse than large banks.

Figure 3 shows the time evolution of the deviation of excess capital from its “long-run equilibrium”. For each bank i at time t , the bank deviation is defined as: $z_{it} = \frac{x_{it} - \bar{x}_i}{\sigma_{x_i}}$ where, \bar{x}_i is the average bank capitalization and σ_{x_i} is the standard error of x_{it} . We can interpret \bar{x}_i as a proxy of the “long-run equilibrium” capitalization, that we assume to be bank specific. We then calculate, at every time t , the aggregate index as a mean of each bank index.

We have split banks into three different groups: large banks, other banks (CCBs excluded) and CCBs. The indicator is more stable for large banks, more volatile for CCBs. This seems consistent with the view that large banks have easier access to capital markets and therefore can adjust their capitalization degree more rapidly to loan demand fluctuations; capitalization is less flexible for smaller banks and for CCBs, which are more dependent on self-financing.

Figure 4 shows the maturity transformation performed by banks. As we discussed in the previous section, the existence of a maturity mismatch between assets and liabilities is a necessary condition for the “bank capital channel” to be at work. Since loans typically have a longer maturity than bank fund-raising, the average maturity of total assets is longer than that of liabilities. In this case, as predicted by the “bank capital channel”, the bank bears a cost when interest rates are raised and obtains a gain when they are lowered. The difference between the average maturity of assets and that of liabilities is greater for CCBs than for other banks. In fact, CCBs’ balance sheets contain a larger percentage of long-term loans, while their bond issues are more modest. For example, at the end of September 2001, the ratio between medium and long-term loans over total loans was 57 per cent for CCBs and 46 per cent for other banks. On the contrary, the ratio between bonds and total fund-raising was, respectively, 27 and 29 per cent. These differences were even greater at the beginning of our sample period. Therefore, the analysis of the maturity mismatch between assets and liabilities indicates that there is room for a “bank capital channel” in Italy with a potentially greater effect for CCBs.

There is no conclusive evidence about the effects of bank capital on the lending behaviour of Italian banks. In principle, the financial structure of the Italian economy during the 1990s makes it more likely that a “bank lending channel” was at work (see Gambacorta, 2001). Most empirical papers based on VAR analysis confirm the existence of such a channel in Italy (Buttiglione and Ferri, 1994; Angeloni et al., 1995; Bagliano and Favero, 1995; Fanelli and Paruolo, 1999; Chiades and Gambacorta, 2003). However, there is much less evidence on cross-sectional differences in the effectiveness of the “bank lending channel” in Italy, due to capitalization (see de Bondt, 1999; Favero et al., 2001; King 2002; which analyze mainly the effect of bank size and liquidity; some evidence of the effect of capitalization on the lending of Italian banks is detected by Altunbas, 2002). So far no evidence has been provided of the existence of the so-called “bank capital channel”.

Apart from the differences in specification, all these paper use the BankScope dataset which, as Ehrmann et al. (2003) point out suffers from two weaknesses. First, the data are collected annually, which might be too infrequent to capture the adjustment of bank aggregates to monetary policy. Second, the sample of Italian banks available in BankScope is biased towards large banks. For example, in 1998 only 576 of the 921 Italian banks were

included in the BankScope dataset. Moreover, the average size of the banks was 3.7 billions of euros against 1.7 for the total population. To tackle these problems our analysis is based on the Bank of Italy Supervisory Reports database, using quarterly data for the full population of Italian banks.

4. The econometric model and the data

The empirical specification, based on Kashyap and Stein (1995), is designed to test whether banks with a different degree of capitalization react differently to a monetary policy or a GDP shock. A simple theoretical framework that justifies the choice of the specification is reported in Appendix 1.¹⁵

The empirical model is given by the following equation, which includes interaction terms that are the product of the excess capital with the monetary policy indicator and the real GDP; all bank specific characteristics (excess capital, cost due to maturity mismatching, etc.) refer to $t-1$ to avoid an endogeneity bias (see Kashyap and Stein, 1995; 2000; Ehrmann et al., 2003):

$$(1) \quad \begin{aligned} \Delta \ln L_{it} = & \mu_i + \sum_{j=1}^4 \alpha_j \Delta \ln L_{it-j} + \sum_{j=0}^4 \beta_j \Delta MP_{t-j} + \sum_{j=0}^4 \varphi_j \pi_{t-j} + \sum_{j=0}^4 \delta_j \Delta \ln y_{t-j} + \\ & + \lambda X_{it-1} + \phi \Delta(\rho_i \Delta MP)_{t-1} + \sum_{j=1}^4 \gamma_j X_{it-1} \Delta MP_{t-j} + \sum_{j=1}^4 \tau_j X_{it-1} \Delta \ln y_{t-j} + \Phi_{it} + \varepsilon_{it} \end{aligned}$$

with $i=1, \dots, N$ (N = number of banks) and $t=1, \dots, T$ (t = quarters) and where:

L_{it} = loans of bank i in quarter t

MP_t = monetary policy indicator

y_t = real GDP

π_t = inflation rate

¹⁵ The model presented in Appendix 1 is a slightly modified version of the analytical framework in Ehrmann et al. (2003). There are two main differences. First, it introduces bank capital regulation in a static way as in Kishan and Opiela (2000). Second, following the literature on bank capital and risk attitude (see Section 2) we model loan losses as a function of bank capitalization.

X_{it} = measure of excess capital

ρ_{it} = cost per unit of asset that the bank incurs in case of a one per cent increase in MP

Φ_{it} = control variables.

The model allows for fixed effects across banks, as indicated by the bank-specific intercept μ_i . Four lags are introduced in order to obtain white noise residuals. The model is specified in growth rates to avoid the problem of spurious correlations among variables that are likely to be non-stationary.

The sample used goes from the third quarter of 1992 to the third quarter of 2001. The interest rate taken as monetary policy indicator is that on repurchase agreements between the Bank of Italy and credit institutions in the period 1992-1998, and the interest rates on main refinancing operation of the ECB for the period 1999-2001.¹⁶

CPI inflation and the growth rate of real GDP are used to control for loan demand effects. The introduction of these two variables allows us to capture cyclical movements and serves to isolate the monetary policy component of interest rate changes.¹⁷

To test for the existence of asymmetric effects due to bank capitalization, the following measure is adopted:

$$X_{it} = \frac{EC_{it}}{A_{it}} - \left(\sum_t \frac{\sum_i EC_{it} / A_{it}}{N_t} \right) / T$$

where EC stands for excess capital (regulatory capital minus capital requirements) and A represents total assets. The excess capital indicator is normalized with respect to the average across all the banks in the respective sample in order to obtain a variable that sums to zero over all observations. This has two implications. First, the sums of the interaction terms

¹⁶ As pointed out by Buttiglione, Del Giovane and Gaiotti (1997), in the period under investigation the repo rate mostly affected the short-term end of the yield curve and, as it represented the cost of banks' refinancing, it represented the value to which market rates and bank rates eventually tended to converge. It is worth noting that the interest rate on main refinancing operations of the ECB does not present any particular break with the repo rate.

¹⁷ For more details on data sources, variable definitions, merger treatment, trimming of the sample and outlier elimination see Appendix 2.

$\sum_{j=1}^4 \gamma_j X_{it-1} \Delta MP_{t-j}$ and $\sum_{j=1}^4 \tau_j X_{it-1} \Delta \ln y_{t-j}$ in equation (1) are zero for the average bank ($\bar{X}_{it-1} = 0$). Second, the coefficients β_j and δ_j are directly interpretable, respectively, as the average monetary policy effect and the average GDP effect.

To test for the existence of a “bank capital channel” we introduce a variable ($\rho_i \Delta MP$) that represents the bank-specific interest rate cost due to maturity transformation. In particular ρ_i measures the loss (gain) per unit of asset the bank suffers (obtains) when the monetary policy interest rate is raised (decreased) by one percentage point. We compute this variable according to supervisory regulations relating to interest rate risk exposure that depends on the maturity mismatching among assets and liabilities.¹⁸ In other words, if a bank’s assets have a longer maturity than its liabilities ρ_i is positive and indicates the cost per unit of asset a bank bears if interest rates are raised by one per cent. To work out the real cost we therefore multiply this measure by the actual change in interest rates. The term $\rho_i \Delta MP$ represents the real cost (gain) that a bank bears (obtains) in each quarter. As formalized in Appendix 1, this measure influences the level of loans. Since the dependent variable is a growth rate, we include this measure in first differences.

The set of control variables Φ_{it} include a liquidity indicator, given by the sum of cash and securities to total assets ratio, and a size indicator, given by the log of total assets. The liquidity indicator is normalized with respect to the mean over the whole sample period, while the size indicator has been normalized with respect to the mean on each single period. This procedure removes trends in size (for more details see Gambacorta, 2001). As for the other bank specific characteristics, liquidity and size indicators refer to $t-1$ to avoid an endogeneity bias.

The fact that supervisors can set solvency ratios greater than 8 per cent for highly risky banks (see Section 3), allows us to test for the effects of exogenous capital shocks on bank lending. We analyze the impact of these supervisory actions on lending in the first two years, computing different dummy variables (one for each quarter following the solvency ratio

¹⁸ See Appendix 2 for further details.

raise) that equal 1 for banks whose solvency ratio is higher than 8 per cent. This allows us to capture the bank lending adjustment process. A specific dummy variable controls for the effects of the introduction of market risk capital requirements in the first quarter of 1995.

The sample represents 82 per cent of total bank credit in Italy. Table 1 gives some basic information on what bank balance sheets look like. Credit Cooperative Banks (CCBs) are treated separately because they are considerably smaller, more liquid and better capitalized than other banks. This evidence is consistent with the view that smaller banks need bigger buffer stocks of securities because of their limited ability to raise external finance on the financial market. This interpretation is confirmed on the liability side, where the percentage of bonds is smaller among CCBs. The high capitalization of CCBs is due, at least in part, to the Banking Law prescription that significantly limits the distribution of net profits.¹⁹

Within each category, banks are split according to their capitalization.²⁰ Low-capitalized banks are larger and less irrespective of their form (CCBs or other banks), liquid and they issue more bonds than well-capitalized banks. While these differences are small among CCBs, they are quite significant among non-CCBs. Among non-cooperative banks, low-capitalized banks are much larger than well-capitalized ones; a greater share is listed and belongs to a banking group. Moreover, they issue more subordinated debt to meet the capital requirements. This evidence is consistent with the view that, “*ceteris paribus*”, capitalization is lower for those banks that bear less adjustment costs from issuing new (regulatory) capital; large and listed banks can more easily raise funds on the capital market and they can also rely on a wider set of “quasi-equity” securities that can be issued to meet capital requirements (e.g. subordinated debts); at the same time, banks belonging to a group

¹⁹ According to Art. 37 of the 1993 Banking Law “*Banche di credito cooperativo must allocate at least 70 per cent of net profits for the year to the legal reserve.*”

²⁰ A “low-capitalized” bank has a capital ratio equal to the average capital ratio below the 10th percentile, a “well-capitalized” bank, that of the banks above the 90th percentile. Since the characteristics of each bank could change over time, percentiles are worked out on mean values.

can better diversify the risk of regulatory capital shortage if an internal capital market is active at the group level.²¹

5. The results

The results of the study are summarized in Table 2, which presents the long-run elasticities of bank lending with respect to the variables.²² The models are estimated using the GMM estimator suggested by Arellano and Bond (1991) which ensures efficiency and consistency provided that the models are not subject to serial correlation of order two and that the instruments used are valid (which is tested for with the Sargan test).²³

The existence of asymmetric effects due to bank capital is tested considering three samples. The first includes all banks and is our benchmark regression; the other two consider separately credit cooperative and other banks. These sample splits are intended to capture differences in the bank capital effect due to the institutional characteristics discussed in the previous sections.

²¹ Houston and James (1998) analyze the role of internal capital markets for banks' liquidity management. The same framework could be applied to soften the regulatory capital constraint among banks belonging to the same group.

²² For example, the long-run elasticity of lending with respect to monetary policy for the average bank (reported on the second row of Table 2) is given by $\sum_{j=0}^4 \beta_j / (1 - \sum_{j=1}^4 \alpha_j)$, while that with respect to the interaction term between excess capital and monetary policy is represented by $\sum_{j=1}^4 \gamma_j / (1 - \sum_{j=1}^4 \alpha_j)$ (see the fifth row of Table 2). Therefore the overall long-run elasticity of the dependent variable with respect to monetary policy for a well-capitalized bank (seventh row) is worked out through $\sum_{j=0}^4 \beta_j / (1 - \sum_{j=1}^4 \alpha_j) + \sum_{j=1}^4 \gamma_j / (1 - \sum_{j=1}^4 \alpha_j) \bar{X}_{>0.90}$, where $\bar{X}_{>0.90}$ is the average excess capital for the banks above the 90th percentile. It is interesting to note that testing the null hypothesis that monetary policy effects are equal in the long-run among banks with different capitalization corresponds to testing $H_0: \sum_{j=1}^4 \gamma_j = 0$ using the t-statistic of $\sum_{j=1}^4 \gamma_j$ in equation (1). Standard errors for the long-run effect have been approximated with the "delta method" which expands a function of a random variable with a one-step Taylor expansion (Rao, 1973). In order to increase the degree of freedom we drop the contemporaneous and the fourth lags that are statistically not different from zero.

²³ In the GMM estimation, instruments are the second and further lags of the quarterly growth rate of loans and of the bank-specific characteristics included in each equation. Inflation, GDP growth rate and the monetary policy indicator are considered exogenous variables.

From the first row of the table it is possible to note that the effect of excess capital on lending is always significant and positive: well-capitalized banks are less constrained by capital requirements and have more opportunity to expand their loan portfolio. The effect is higher for CCBs than for other banks because they encounter higher capital adjustment costs: CCBs are more dependent on self-financing and cannot easily raise new regulatory capital.

The response of bank lending to a monetary policy shock has the expected negative sign. These estimates roughly imply that a one per cent increase in the monetary policy indicator leads to a decline in lending of around 1.2 per cent for the average bank. The effect is higher for CCBs (-1.8 per cent) than for other banks (-0.2 per cent), which have more access to markets for non-reservable liabilities. Testing the null hypothesis that monetary policy effects are equal among banks with a different degree of capitalization is identical to testing the significance of the long-run coefficient of the interaction between excess capital and the monetary policy indicator (see “Excess capital*MP” in Table 2). As predicted by the “bank lending channel” hypothesis the effects of a monetary tightening are smaller for banks with a higher capitalization, which have easier access to non-deposit financing. Bank capitalization interaction with monetary policy is very high (in absolute value) for non-CCBs, which are more dependent on non-deposit forms of external funds. It is worth noting that well-capitalized non-CCBs are completely insulated from the effect of a monetary tightening (the effect is statistically not different from zero).

The effects of the so-called “bank capital channel” are reported on the eighth row of Table 2. The coefficients have the expected negative sign for all banks groups. These estimates roughly imply that an increase (decrease) of one basis point in the ratio between the maturity transformation cost and total assets determines a reduction (increase) of 1 per cent in the growth rate of lending. The reduction (increase) is bigger for CCBs, which as we saw in Section 3, typically have a greater maturity mismatch between assets and liabilities. In fact, CCBs balance sheets contain a larger percentage of long-term loans, while their bonds issues are more modest. Another possible explanation for the greater effect of the “bank capital channel” for CCBs could be they make less use of derivatives to shield the maturity transformation gap. With these characteristics CCBs bear a higher cost when interest rates are raised and obtain a higher gain in the opposite case. To sum up, the results

indicate the existence of a “bank capital channel” that amplifies the effects of monetary policy changes on bank lending and asymmetric effects of such a channel among banks groups.

The models show a positive correlation between credit and output. A one per cent increase in GDP (which produces a loan demand shift) determines a loan increase of around 0.7 per cent. The effect is smaller for CCBs than for other banks. This has two main explanations. First, for CCBs local economic conditions are more important than national ones; second, they have closer customer relationships because they grant credit primarily to their members (see the 1993 Banking Law, Art. 35).

The interaction term between GDP and excess capital is negative. This means that the credit supply of well-capitalized banks is less dependent on the business cycle. This result is consistent with Kwan and Eisenbeis (1997), where capital is found to have a significantly negative effect on credit risk. On theoretical grounds our findings are consistent with Flannery (1989) and Genotte and Pyle (1991), who argue that well-capitalized banks are more risk averse and select *ex-ante* borrowers with less probability of defaulting. Their risk attitude therefore limits credit supply adjustments in bad states of nature, preserving credit relationships. This explanation needs to be discussed in relation to the institutional categories of Italian banks. From the sample split it emerges that the heterogeneity coefficient is highly significant only for CCBs, while there are no significant asymmetric effects for the other banks. This is consistent with the stylized fact discussed in Section 3 that CCBs are more risk-averse than other banks. They detain high levels of excess capital and are more able to insulate the effect of an economic downturn. As in Vander Vennet and Van Landshoot (2002), capital provides banks with a structural protection against credit risk changes. Looking at Table 2, well-capitalized CCBs are able to completely insulate the effect of GDP on their lending. On the other hand, non-CCBs seem to be risk-neutral: the effect of a 1 per cent increase in GDP on lending does not differ too much between well-capitalized (1.3 per cent) and low-capitalized banks (1.5).

As explained in Section 4, the effects of exogenous capital shocks on bank lending are captured by dummy variables related to the introduction of a specific (higher than 8 per cent) solvency ratio. In this case there are not many differences among the three samples. The introduction of specific solvency ratio determines an overall reduction of around 20 per cent

in bank lending after two years. The magnitude of the effect is similar among banks groups. This result seems consistent with the hypothesis that issuing new equity can be costly for a bank in the presence of agency costs and tax disadvantages (Myers and Majluf, 1984; Stein, 1998; Calomiris and Hubbard, 1995; Cornett and Tehranian, 1994).

5.1 Robustness checks

We test the robustness of these results in several ways. The first test introduces additional interaction terms by combining excess capital with inflation, making the basic equation (1):

$$(2) \quad \Delta \ln L_{it} = \mu_i + \sum_{j=1}^4 \alpha_j \Delta \ln L_{it-j} + \sum_{j=0}^4 \beta_j \Delta MP_{t-j} + \sum_{j=0}^4 \varphi_j \pi_{t-j} + \sum_{j=0}^4 \delta_j \Delta \ln y_{t-j} + \lambda X_{it-1} + \phi \Delta(\rho_t \Delta MP)_{t-1} + \sum_{j=1}^4 \gamma_j X_{it-1} \Delta MP_{t-j} + \sum_{j=1}^4 \tau_j X_{it-1} \Delta \ln y_{t-j} + \sum_{j=1}^4 \psi_j X_{it-1} \pi_{t-j} + \Phi_{it} + \varepsilon_{it}$$

The reason for this test is the possible presence of endogeneity between inflation and capitalization; excess capital may be higher when inflation is high or vice versa. However, when the test is performed nothing changes and the double interaction is always not significant ($\sum_{j=1}^4 \psi_j$ turns out to be statistically not different from zero).

The second robustness check compares equation (1) with the following model:

$$(3) \quad \Delta \ln L_{it} = \mu_i + \sum_{j=1}^4 \alpha_j \Delta \ln L_{it-j} + \theta_t + \lambda X_{it-1} + \phi \Delta(\rho_t \Delta MP)_{t-1} + \sum_{j=1}^4 \gamma_j X_{it-1} \Delta MP_{t-j} + \sum_{j=1}^4 \tau_j X_{it-1} \Delta \ln y_{t-j} + \Phi_{it} + \varepsilon_{it}$$

where all variables are defined as before, and θ_t describes a complete set of time dummies.

This model completely eliminates time variation and tests whether the three pure time variables used in the baseline equation (prices, income and the monetary policy indicator) capture all the relevant time effects. The results are presented in the fourth column of Table 2. Again, the estimated coefficients on the interaction terms do not vary much between the

two kinds of models, which testifies to the reliability of the cross-sectional evidence obtained.

A geographical control dummy is introduced in each model and given the value of one if the head office of the bank is in the North of Italy and zero if elsewhere. In all cases the maturity transformation variable and the interactions between monetary policy and output shocks with respect to excess capital remains unchanged.

The last robustness check includes the interaction between monetary policy and the liquidity indicator in the baseline regression. The reason for this test is to verify if the asymmetric effects of monetary policy due to excess capital remains relevant; the interactions between monetary policy and liquidity do in fact represent a significant factor. We obtain:

$$(4) \quad \Delta \ln L_{it} = \mu_i + \sum_{j=1}^4 \alpha_j \Delta \ln L_{it-j} + \sum_{j=0}^4 \beta_j \Delta MP_{t-j} + \sum_{j=0}^4 \varphi_j \pi_{t-j} + \sum_{j=0}^4 \delta_j \Delta \ln y_{t-j} + \lambda X_{it-1} + \\ + \phi \Delta(\rho_i \Delta MP)_{t-1} + \sum_{j=1}^4 \gamma_j X_{it-1} \Delta MP_{t-j} + \sum_{j=1}^4 \tau_j X_{it-1} \Delta \ln y_{t-j} + \sum_{j=1}^4 \psi_j Liq_{it-1} \Delta MP_{t-j} + \Phi_{it} + \varepsilon_{it}$$

The results, which are presented in the fifth column of Table 2, confirm that liquidity is an important factor in enabling banks to attenuate the effect of a decrease in deposits on lending but, at the same time, it leaves the distributional effects of excess capital unaltered. The result on liquidity is in line with Gambacorta (2001) and Ehrmann et al. (2003); banks with a higher liquidity ratio are better able to buffer their lending activity against shocks to the availability of external finance by drawing on their stock of liquid assets. In these studies, however, bank capital (defined as the capital-to-asset ratio) does not significantly affect the banks' reaction to a monetary policy impulse. This additional test therefore allow us to cast some doubt on the use of the capital-to-asset ratio to capture distributional effects in a lending regression because this measure poorly approximates the relevant capital constraint under the Basel standards.

6. Conclusions

This paper investigates the existence of cross-sectional differences in the response of lending to monetary policy change and output shocks due to a different degree of

capitalization. It adds to the existing literature in three ways. First, it considers a measure of capitalization that is better able to capture the relevant capital constraint under the Basel standards than the well-known capital-to-asset ratio. Defining banks' capitalization as the amount of capital that banks hold in excess of the minimum required to meet prudential regulation standards we are able to measure the effect of capital requirements and to reflect information on the structure of the loan portfolio or its risk characteristics. Second, it disentangles the effects of the "bank lending channel" (triggered by a reduction in deposits) from those of the "bank capital channel" (due to maturity transformation); different kinds of shocks on lending for the Italian banking system are analyzed: not only monetary policy shocks, but also GDP and capital shocks. In the last case, shocks are genuinely exogenous because they refer to an increase in minimum capital requirements that supervisors set for very risky banks. Third, it uses a unique dataset of quarterly data for Italian banks over the period 1992-2001; the full coverage of banks and the long sample period should overcome some distributional bias detected for other available public dataset.

The main results of the study are as follows. Well-capitalized banks can better shield their lending from monetary policy shocks as they have easier access to non-deposit fund-raising consistently with the "bank lending channel" hypothesis. In this respect, the bank capitalization effect is greater for non-cooperative banks, which are more dependent on non-deposit forms of external funds. A "bank capital channel" is also detected, with stronger effects on cooperative banks whose balance sheets contain a larger maturity mismatch between assets and liabilities. Capitalization also influences the way banks react to GDP shocks. Again, the credit supply of well-capitalized banks is less pro-cyclical. This result has at least two explanations. First, well-capitalized banks are more risk-averse (as argued by Flannery, 1989, and Genotte and Pyle, 1991) and, as their borrowers are less risky, suffer less from economic downturns via loan losses. Second, well-capitalized banks can better absorb temporarily financial difficulties of their borrowers and preserve long-term lending relationships. Exogenous capital shocks due to the imposition of a specific (higher than 8 per cent) solvency ratio for highly risky banks determine an overall reduction of 20 per cent in lending after two years. This result is consistent with the hypothesis that it costs less to adjust lending as opposed to capital.

This study shows that capital matters for the response of bank lending to economic shocks. However, it is difficult to deduce the implications of this result in terms of the new directions of the Basel Accord to be implemented in 2005. The main goal of the amendments is to make the risk weights used to calculate the solvency ratio more risk-sensitive. In fact, as shown in Section 3, the actual buckets are somewhat too crude and could lead to regulatory arbitrage. The new weights will be dependent on the ratings of borrowers given by rating agencies or internal models developed by banks. This has two consequences. First, the new Basel Accord will affect banks differently, depending on their riskness: for riskier (safer) banks the level of capital requirements will be higher (lower), compared with the present regulation which set a solvency ratio that is almost constant among different classes of risk for private customers. As a direct consequence, heterogeneity in the response of lending to GDP shocks due to capitalization could be attenuated. On the other hand, by imposing a higher degree of information disclosure, the new capital regulation could make “market discipline” more effective, thereby reducing the information problems on which the “bank lending channel” and the “bank capital channel” rely.

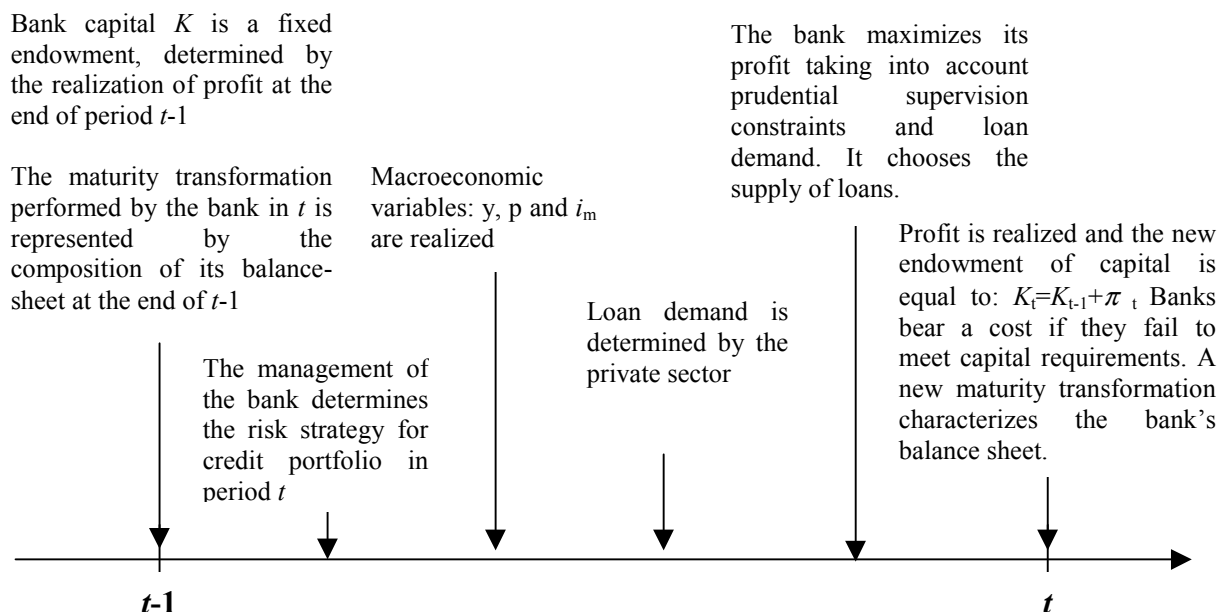
Second, the pro/counter-cyclicality of capital regulations will strongly depend upon the capacity of external rating agencies and internal models to anticipate economic downturns. If borrowers are downgraded during a recession this should lead to higher capital requirements that could exacerbate the effect on lending. On the contrary, if ratings are able to anticipate slowdowns or respond smoothly to economic conditions (they are set “through the cycle”) the effects of monetary policy and GDP shocks on lending should be less pronounced.

Appendix 1 – A simple theoretical model

In order to justify the empirical framework adopted for the econometric analysis, in this Appendix we develop a simple one-period model highlighting the main channels through which bank capital can affect loan supply (see Kishan and Opiela, 2000; Ehrmann, 2003). A causal interpretation of the step of the model is given in Figure A1.²⁴

Figure A1

The sequential steps of the model



The balance-sheet constraint of the representative bank is given by the following identity:

$$(A1.1) \quad L + S = D + B + R + X$$

where L stands for loans, S for securities, D for deposits, B for bonds, R for capital requirements and X for excess capital. At the end of $t-1$ bank capital, defined as $K = X + R$,

²⁴ This causal interpretation has the sole aim of stressing that bank-specific characteristics are given in $t-1$ and are predetermined with respect to the maximization in t . On the contrary, the steps in t , whose subscript is omitted in the model for simplicity, are simultaneously determined.

is a given endowment. This hypothesis indicates that the management of the bank (which we assume is also its owner to rule out problems of informational asymmetries) does not alter the capitalization of the firm buying or selling shares between $t-1$ and t ; capital therefore remains fixed until period t when it will be modified by the realization of the profit or the loss ($K_t = K_{t-1} + \pi_t$).²⁵

At the beginning of period t the management of the bank determines the risk strategy for credit allocation. The allocation of credit portfolio among industries, sectors of activity, geographical areas, depends upon the risk aversion of the management, which we indicate with $\theta \in [-\infty, +\infty]$. This measure could be interpreted as an Arrow-Pratt measure of absolute risk aversion that is equal to zero if the bank is risk-neutral. It is worth noting that the decision on the risk strategy profile is taken before the actual supply of credit. The latter will be chosen to meet loan demand after the realization of economic conditions. Therefore, in choosing the risk profile the management of the bank takes into account ex-ante information about the possible distribution of the macro variables (income, price, interest rates) and selects a strategy for each possible state of the world.

The choice of risk profile for the lending portfolio (that, as we have shown, depends on the risk aversion of the management of the bank) has two important implications. First, it influences the percentage of non-performing loans (j) that are written-off at time t . Second, it affects the average rate of return on lending since risky loans are associated with a higher level of return. This means that the risk premium is negatively related to the bank's risk aversion.

In the spirit of the actual BIS capital adequacy rules, R is given by a fixed amount (k) of loans.²⁶ We assume that capital requirements are linked only to credit risk (loans) and not

²⁵ This is an extreme case of capital costly adjustment that we assume here to simplify the model. This hypothesis is widely used in the literature (see, amongst others, Koehn and Santomero, 1980; Kim and Santomero, 1988; Rochet, 1992). Issuing new equity can be costly for a bank. The main reasons are agency costs and tax disadvantages (Myers and Majluf, 1984; Stein, 1998; Calomiris and Hubbard, 1995; Cornett and Tehranian, 1994). A discussion on the exogeneity/endogeneity of the capital goes beyond the scope of this study. Here exogeneity has been assumed in order to simplify the algebra since it does not modify the main findings of the model. In the empirical part of the paper this hypothesis is relaxed using the Arellano and Bond (1991) procedure, which allows us to control for endogeneity through instrument variables (see Section 4).

²⁶ A more complicated version of the capital constraint would have not changed the main result of the analysis. A possible extension of the simple capital requirement rule could be to consider a different weight on

to interest rate risk (investment in securities, which are considered completely safe for simplicity).

$$(A1.2) \quad R = kL$$

We assume that banks hold capital in excess of capital requirements. This hypothesis is consistent with the fact that capital requirement constraints are slack for most banks at any given time. Banks may hold a buffer as a cushion against contingencies (Wall and Peterson, 1987; Barrios and Blanco, 2001) as they face capital adjustment costs or to convey positive information on their economic value (Leland and Pyle, 1977; Myers and Majluf, 1984). Another explanation is that banks face a private cost of bankruptcy, which reduces their expected future income. Van den Heuvel (2001a) argues that even if capital requirements are currently not binding, a low-capitalized bank may optimally forgo profitable lending opportunities now in order to lower the risk of future capital inadequacy. To capture this aspect in a simple way we assume that banks pay a lump-sum tax if they cannot meet capital requirements in t .

The private sector sets its lending demand after the realization of macroeconomic variables. The bank acts on a loan market characterized by monopolistic competition, which enables it to set the interest rate along the loan demand schedule.²⁷ The interest rate on loans (i_t) is therefore given by:²⁸

$$(A1.3) \quad i_t = c_0 L^d + c_1 i_m + c_2 y + c_3 p + \eta \quad (c_0 > 0, c_1 > 0, c_2 > 0, c_3 > 0)$$

non-performing loans (j L): $R = k_1 (1-j) L + k_2 j L$, with $1 \geq k_2 \geq k_1 \geq 0$. This should reflect the fact until 1996 the weight applied to non-performing loans was double with respect to performing loans ($k_2 = 0.16 > k_1 = 0.08$). Another possible extension could be to consider a different weight for loans backed by real guarantee. Indeed, loans to the private sector bear a weight of 0.04 if backed by real guarantees, 0.08 in all other cases (non-performing loans backed by real guarantees included).

²⁷ This hypothesis is generally adopted by the existing literature on bank interest rate behaviour. For a survey on modeling the banking firm see Santomero (1984). See also Green (1998) and Lim (2000).

²⁸ For simplicity we assume that all banks face the same loan demand schedule, i. e. the coefficients c_i for $i=0, 1, 2, 3$, are equal among banks. The model could easily be extended to a more general case where each coefficient depends upon some bank-specific characteristics, but this goes beyond the scope of this study. The simplifying hypothesis allows us to concentrate on the effects of bank-specific characteristics on loan supply.

which is positively related to loan demand (L^d), the opportunity cost of self-financing, proxied by the money market interest rate (i_m), the real GDP (y), the price level (p) and the risk-premium (η).²⁹

The risk premium in equation (A1.3) is negatively related to the bank's risk aversion which, as discussed before, influences the risk profile of the loan portfolio. Therefore, we have:

$$(A1.4) \quad \eta = \eta_0 + \eta_1 \theta \quad (\eta_0 > 0, \eta_1 < 0)$$

Loans are risky and, in each period, a percentage j of them is written off from the balance sheet, therefore reducing the bank's profitability. The percentage of loans which goes into default (j) depends inversely on the state of the economy, proxied by real GDP, and on the risk-taking behaviour of the bank (θ). Therefore, per-unit loan losses of the bank are given by:

$$(A1.5) \quad j(y, \theta) = j_0 y + j_1 \theta y + j_2 \theta \quad (j_0 < 0, j_1 < 0, j_2 < 0)$$

Equation (A1.5) states that the quality of bank portfolios reacts differently to changes in the state of the economy and this in turn depends on the bank's *ex-ante* risk attitude. The cross-product indicates that the write-offs of more risk-averse banks react less to GDP shocks. If the bank is risk-neutral ($\theta=0$), j depends only on real GDP.

Following the literature that links risk-aversion and bank capital (see Section 2), we hypothesize that the parameter θ is related to the excess capital X at the end of period $t-1$.³⁰

$$(A1.6) \quad \theta = \mu X_{t-1}$$

²⁹ As far as GDP is concerned, there is no clear consensus about how economic activity affects credit demand. Some empirical works underline a positive relation because better economic conditions would improve the number of projects becoming profitable in terms of expected net present value and therefore increase credit demand (Kashyap, Stein and Wilcox, 1993). This is also the hypothesis used in Bernanke and Blinder (1988). On the contrary, other works stress the fact that if expected income and profits increase, the private sector has more internal sources of financing and this could reduce the proportion of bank debt (Friedman and Kuttner, 1993). On the basis of the evidence provided by Ehrmann et al. (2001) for the four main countries of the euro area and by Calza et al. (2001) for the euro area as a whole, we expect that the first effect dominates and that a higher income determines an increase in credit demand ($c_2 > 0$).

³⁰ An analysis of the causal direction of influence between capital (wealth) and risk aversion goes beyond the scope of this paper. In the model we suppose that this link is bi-directional. For a discussion on the link between bank capital and risk aversion see Section 2.

It is worth noting that we analyze the link between risk aversion and excess capital instead of the level of capital. As discussed in the introduction and in Section 2, the excess capital is a risk-adjusted measure of bank wealth that is independent of prudential supervision constraints and therefore can be correctly studied with respect to risk aversion. On the contrary, the level of capital, which is widely used in the existing literature, does not give information on the structure of the loan portfolio or its risk characteristics.

As discussed in Section 2, the effect of the excess capital on banks' risk attitude is controversial in the existing literature; therefore, the sign of μ is not certain *a priori*. A positive value of μ would imply that well-capitalized banks are more risk-averse: they *ex-ante* select less risky borrowers whose ability to repay their debts is less influenced by output shocks. In this case, the low burden of write-offs on their profit and loss account allows well-capitalized banks to smooth the effects of an economic downturn on credit supply. In other words, well-capitalized banks can better perform the "intertemporal smoothing function" described by Allen and Gale (1997) as they are more able to preserve credit relationships in bad states of nature. On the contrary, if μ is negative, well-capitalized banks are more risk-tolerant and the quality of their credit portfolio should suffer more from the effects of a drop in income.

The bank holds securities in order to face unexpected deposit outflows. We assume that security holdings are a fixed share of outstanding deposits:

$$(A1.7) \quad S = sD \quad (0 < s < 1)$$

Deposits are fully insured and are not remunerated. Their demand schedule is negatively related to the deposit opportunity cost that is equal to the monetary policy rate i_m :

$$(A1.8) \quad D = d i_m \quad (0 < d < 1)$$

The latter equation implies that the overall amount of deposits is completely controlled by the monetary authority.

³¹ Note that a reverse causality from risk aversion to capital requirements and then excess capital is excluded in the current regulatory framework characterized by an almost constant loan solvency ratio.

Because banks are risky and bonds are not insured, the bond interest rate incorporates a risk premium that we assume depends on banks' excess capital at the end of period $t-1$. Subscribers of the bonds have a complete knowledge of the last balance sheet of the bank and demand a lower interest rate if, taking into account the riskiness of the bank credit, it is well-capitalized. We include both a direct influence of capitalization on the spread between the interest rate on bonds and the money market rate and an interaction term between the two rates.

$$(A1.9) \quad i_b(i_m, X) = i_m + b_0 X_{t-1} + b_1 i_m X_{t-1} \quad (b_0 < 0, b_1 < 0)$$

This assumption implies that the relevance of the “bank lending channel” depends on banks' capital adequacy, which determines the degree of substitutability between insured bank debt, typically deposits, and uninsured bank debt, typically bonds or CDs (Romer and Romer, 1990). Equation (A1.9) also implies that, because of “market discipline”, it could be optimal for banks to hold a capital endowment greater than the lowest level necessary to meet regulatory capital requirements.

The effects of the so-called “bank capital channel” are captured by the following equation:

$$(A1.10) \quad C^{MT} = \rho_{t-1} \Delta i_m (L + S) \quad (\rho > 0)$$

where C^{MT} represents the total cost (or gain) borne (obtained) by the bank in the event of a change in monetary policy due to the maturity transformation performed by the bank in $t-1$, before the monetary shock occurs. In particular, ρ_{t-1} reflects how assets and liabilities differ in terms of interest rate sensitivity at the end of $t-1$, and depends on the maturity transformation performed by the bank. In particular, this parameter represents the cost (gain) per unit of asset that the bank incurs in case of a one per cent variation in the monetary policy interest rate. Therefore, since loans typically have a longer maturity than bank fund-raising we expect that $\rho_{t-1} > 0$. In this case the bank bears a cost when interest rates are raised and obtains a gain in the opposite case.

Operating costs (C^{OC}), which can be interpreted as screening and monitoring costs, depend on the amount of loans:

$$(A1.11) \quad C^{OC} = g_0 + g_1 L \quad (g_0 > 0, g_1 > 0)$$

The representative bank maximizes its profits subject to the balance-sheet constraint (A1.1), the regulatory capital requirement (A1.2) and loan demand (A1.3):³²

$$\underset{L}{Max} \pi = i_L L + i_m S - jL - i_B B - C^{MT} - C^{OC}$$

s.t. (A1.1), (A1.2) and (A1.3)

Solving the maximization problem it is possible to find the optimal level of loan supply:

$$(A.12) \quad L^s = \Psi_0 + \Psi_1 p + \Psi_2 i_m + \Psi_3 i_m X_{t-1} + \Psi_4 y + \Psi_5 y X_{t-1} + \Psi_6 \rho_{t-1} \Delta i_m + \Psi_7 X_{t-1}$$

where:

$$\Psi_0 = \frac{g_1 - \eta_0}{2c_0}; \quad \Psi_1 = \frac{c_3}{-2c_0} > 0; \quad \Psi_2 = \frac{b_0(k-1) + c_1}{-2c_0}; \quad \Psi_3 = \frac{b_1(1-k)}{2c_0} > 0;$$

$$\Psi_4 = \frac{c_2 - j_0}{-2c_0} > 0; \quad \Psi_5 = \frac{j_1 \mu}{2c_0}; \quad \Psi_6 = \frac{1}{2c_0} < 0; \quad \Psi_7 = \frac{(\eta_1 - j_2)\mu + (k-1)b_2}{-2c_0}.$$

Equation (A.12) states that monetary tightening causes a decrease in lending ($\Psi_2 < 0$) only if the “bank lending channel” ($b_0(1-k) < 0$) is greater than the “opportunity cost” effect ($c_1 > 0$). The effect of a monetary squeeze is smaller for well-capitalized banks ($\Psi_3 > 0$), which are better able to compensate for the deposit drop by issuing bonds at a lower price. Credit supply reacts positively to an output expansion ($\Psi_4 > 0$), but the effect depends on the bank’s excess capital, affecting its risk attitude and its sensitivity to the business cycle. The effect of capital regulation on credit supply could be checked through the solvency ratio (k) and the excess capital (X). A higher capital requirement (k high) reduces the effect of the “bank lending channel” (it lowers $b_0(1-k)$) and the effects via “market discipline” (it lowers Ψ_3). On the other hand, excess capital alters the asymmetric effects on output, but its sign is not clear

³² In this model, banks optimally choose loan supply. Since K is given, the optimal choice of L determines the level of excess capital $X > 0$. We assume that banks never expand loan supply until the point where $X=0$, because they want to avoid capital inadequacy costs (see Dewatripont and Tirole, 1994 and Van den Heuvel, 2001a).

“a priori” because, as we have seen, this also depends on the bank risk aversion effect. The effects of the so-called “bank capital channel” are captured by $\Psi_6 < 0$; due to the longer maturity of bank assets with respect to liabilities ($\rho > 0$), in the event of monetary tightening ($\Delta i_m > 0$) the bank bears a maturity transformation cost; given the capital constraint, the reduction in profit determines a decrease in lending.

The last coefficient reflects the direct influence of excess capital on loan supply. A sufficient condition for Ψ_7 to be positive is that the saving obtained by the bank on bond funding due to market discipline (represented by the absolute value of b_2) overcomes the risk-aversion effect (whose sign is uncertain “a priori”).

The empirical model (1) in Section 4 is given by a slightly modified version of equation (A.12). In particular, there are three main differences. The first is due to the non-stationary of some variables that could cause problems of spurious correlation. Since these variables have a unit root (this has been checked by means of an Augmented Dickey Fuller test) we have expressed the model in growth rates. The ratios X_{t-1} and ρ_{t-1} turn out to be stationary and are included in levels. The second difference concerns the number of lags used in the specification. In fact, the contemporaneous variables were not sufficient to capture the dynamics of the interaction terms and the macro variables. We have therefore included a more complete dynamic setting, allowing the adjustment to be completed in four periods (one year). We rule out the interactions of $X_{i,t-1}$ with contemporaneous values of the monetary policy indicator and real GDP to avoid endogeneity problems. The third difference relates to the inclusion of quarterly dummies (to tackle seasonality problems) and other control variables (to control for specific effects in the loan supply equation due to regulation, see Section 4). These modifications are standard in the literature. For similar approaches see Kashyap and Stein (1995, 2000) for the US and Ehrmann et al. (2003) for the euro-area countries.

Appendix 2 - Description of the database

The data are taken from the Bank of Italy Supervisory Reports database. Loans do not include bad debts and repurchase agreements. Liquidity is equal to the sum of cash, securities and repurchase agreements at book value (repos have been considered for statistical reasons). The size of a bank is measured by the logarithm of the total balance sheet. Capitalization is given by the ratio of regulatory capital in excess of capital requirements to total asset (see Section 3). The growth rates are computed by first difference of variables in logs.

The cost a bank bears owing to its maturity transformation function stems from the different sensitivity of its assets and liabilities to interest rates. Using a maturity ladder, we have:

$$\rho_i = \frac{\sum_j (\chi_j \cdot A_j - \zeta_j P_j)}{\sum_j A_j} * 100$$

where A_j (P_j) is the amount of assets (liabilities) of j months-to-maturity and χ_j (ζ_j) measures the increase in interest on assets (liabilities) of class j due to a one per cent increase in the monetary policy interest rate ($\Delta i_m = 0.01$). Broadly speaking if $\sum_j (\chi_j \cdot A_j - \zeta_j P_j) > 0$, ρ_i represents the cost per unit of asset bank i bears if the monetary policy interest rate is raised by one percentage point. We obtain χ_i and ζ_i directly from supervisory regulations on interest rates risk exposure. In particular, the regulations assume, for any given class j of months-to-maturity: 1) the same sensitivity parameter ($\chi_j = \zeta_j$) and 2) a non-parallel shift in the yield curve ($\Delta i_m = 0.01$ for the first maturity class and then decreasing for longer maturity classes). Then, for each bank, after classifying assets and liabilities according to their months-to-maturity class, we computed the bank-specific variable ρ_i . This variable was multiplied then by the change in the monetary policy indicator (Δi_m) to obtain the realized loss (or gain) per unit of asset in each quarter.

In assembling our sample, the so-called special credit institutions (long-term credit banks) have been excluded since they were subject to different supervisory regulations

regarding the maturity range of their assets and liabilities. Nevertheless, special long-term credit sections of commercial banks have been considered part of the banks to which they belong. Foreign banks are also excluded as they are subject to their “home country control”.

Particular attention has been paid to mergers. In practice, it is assumed that these took place at the beginning of the sample period, summing the balance-sheet items of the merging parties. For example, if bank A is incorporated by bank B at time t , bank B is reconstructed backward as the sum of the merging banks before the merger.

Data are quarterly and are not seasonally adjusted. Three seasonal dummies and a constant are also included. For cleaning, all observations for which lending, liquidity and total assets are equal to or less than zero were excluded. After this treatment, the sample includes 691 banks and 26,108 observations.

An observation has been defined as an outlier if it lies within the top or bottom percentile of the distribution of the quarterly growth rate of lending. If a bank has an outlier in the quarterly growth rate of lending it is completely removed from the sample. The final dataset was composed of 558 banks (20,727 observations).

A “low-capitalized” bank has a capital ratio equal to the average capital ratio below the 10th percentile, a “well-capitalized” bank, that of the banks above the 90th percentile. Since the characteristics of each bank could change over time, percentiles have been worked out on mean values.

Tables and figures

Table 1

DATA DESCRIPTION
(September 2001)

	Credit cooperative banks			Other banks					Total		
	<i>well capitalized</i>	<i>low capitalized</i>	Total	<i>well capitalized</i>	<i>low capitalized</i>	<i>large banks (2)</i>	Total	<i>large banks (2)</i>	<i>well capitalized</i>	<i>low capitalized</i>	Total
Number of banks	40	40	401	15	16	5	155	31	55	55	556
Banks belonging to a group (1)	0.0	0.0	0.0	33.3	81.3	100.0	71.6	100.0	0.0	67.9	19.9
Listed banks	0.0	0.0	0.0	0.0	37.5	80.0	16.8	51.6	0.0	26.8	4.7
Mean total assets (millions of euros)	160	246	205	1,341	12,468	35,766	9,160	38,581	159	12,486	2,692
- fraction of total assets	7.8	12.0	100.0	1.4	14.1	12.6	100.0	84.2	0.6	45.9	100.0
Liquidity/total assets	33.5	21.2	25.3	23.1	18.7	15.3	18.2	13.9	34.3	17.8	23.3
Loans/total assets	39.7	50.0	47.8	40.8	51.3	50.1	49.4	50.0	39.3	51.1	48.3
Bad loans/total loans	7.5	6.4	5.6	11.2	8.3	10.0	6.2	4.3	6.6	5.7	5.8
Bonds issues/deposits and bonds	18.5	30.6	27.3	23.5	30.7	31.7	29.3	33.5	19.5	29.4	27.9
Subordinated debt/capital requirements	0.0	2.9	2.3	1.1	19.3	16.9	14.4	34.1	1.4	16.7	5.7
(Regulatory capital - capital requirements) / total assets	16.0	2.5	7.9	10.4	1.6	1.3	4.3	3.3	15.4	2.0	6.9
Share of branches located in the South of Italy	32.5	26.7	22.6	26.3	28.6	44.7	22.6	19.9	34.5	27.4	22.6

Source: Bank of Italy supervisory reports.

Note: A "low-capitalized" bank has a capital ratio (regulatory capital - capital requirements/total assets) equal to the average capital ratio below the 10th percentile, a "well-capitalized" bank has the average capitalization above the 90th percentile.

(1) Only groups with more than one bank member are considered. - (2) Large banks are non-cooperative banks with total assets over 10 billion euro in September 2001

Table 2

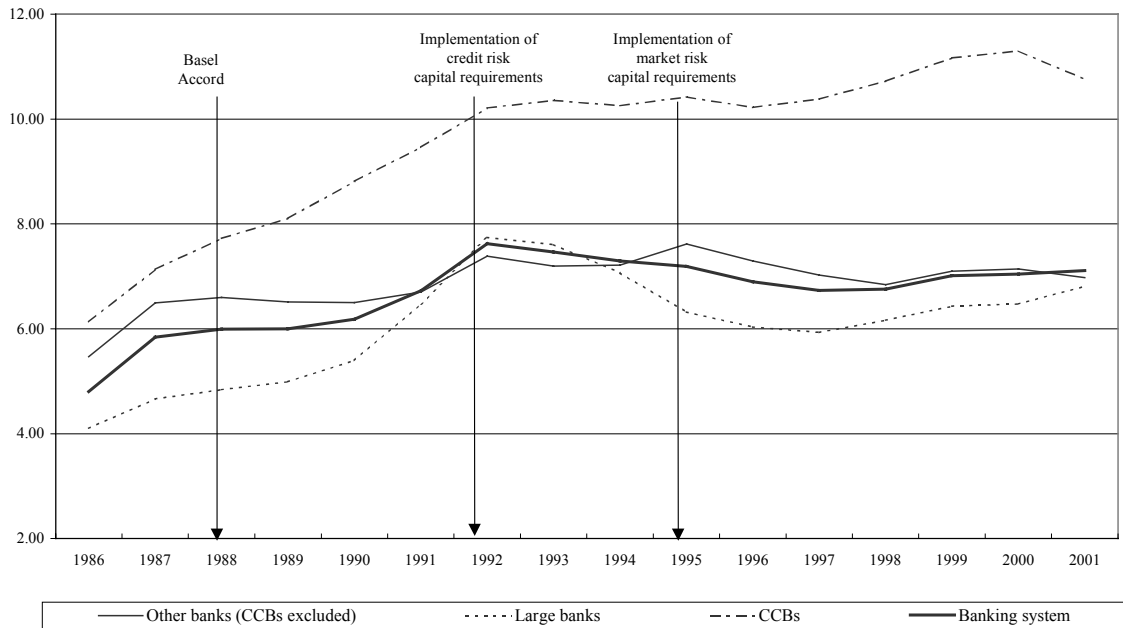
THE EFFECT OF BANK CAPITAL ON LOAN SUPPLY

Dependent variable: quarterly growth rate of lending	Model 1 Baseline regression						Model 2 T-dummies		Model 3 Liquidity*MP interactions	
	Total		Credit cooperative banks		Other banks		Total		Total	
	Coeff.	S.Error	Coeff.	S.Error	Coeff.	S.Error	Coeff.	S.Error	Coeff.	S.Error
Excess capital (t-1)	0.744 ***	0.021	1.058 ***	0.032	0.516 ***	0.057	0.763 ***	0.019	0.713 ***	0.022
<i>Long-run coefficients</i>										
Monetary policy (MP)	-1.187 ***	0.055	-1.778 ***	0.091	-0.201	0.175			-1.282 ***	0.056
Real GDP growth	0.668 ***	0.087	0.751 ***	0.125	1.350 ***	0.295			0.708 ***	0.087
Inflation (CPI)	1.127 ***	0.116	2.558 ***	0.175	0.654 **	0.300			1.312 ***	0.117
Excess capital*MP ("bank lending channel")	8.010 ***	0.906	8.921 ***	1.119	11.790 ***	2.139	7.363 ***	0.714	6.445 ***	0.984
MP effect for:										
well-capitalized banks	-0.622 ***	0.092	-1.106 ***	0.110	0.176	0.196			-0.799 ***	0.100
low-capitalized banks	-1.615 ***	0.066	-2.159 ***	0.122	-0.968 ***	0.208			-1.628 ***	0.068
Maturity transformation ("bank capital channel")	-1.173 ***	0.053	-1.287 ***	0.091	-0.597 ***	0.154	-0.933 ***	0.011	-1.116 ***	0.054
Excess capital*GDP ("risk-aversion effect")	-4.894 ***	1.621	-11.620 ***	2.517	-2.304	4.092	-4.336 ***	1.274	-4.375 ***	1.650
GDP shock effect for:										
well-capitalized banks	0.323 **	0.145	-0.126	0.217	1.278 ***	0.329			0.380 **	0.153
low-capitalized banks	0.930 ***	0.122	1.246 ***	0.180	1.491 ***	0.388			0.943 ***	0.122
Liquidity *MP ("bank lending channel")									0.992 ***	0.248
MP effect for:										
liquid banks									-1.124 ***	0.058
low-liquid banks									-1.416 ***	0.071
Specific capital requirements (total effect after two years)	-0.199 ***	0.023	-0.188 ***	0.016	-0.186 *	0.107	-0.215 ***	0.021	-0.243 ***	0.023
Sargan test (2nd step; pvalue)		0.115		0.146		0.092		0.112		0.106
MA(1), MA(2) (p-value)	0.000	0.129	0.000	0.077	0.000	0.479	0.000	0.103	0.000	0.131
No of banks, no of observations	556	17792	401	12795	155	4960	556	17792	556	17792

*=significance at the 10 per cent; **=significance at the 5 per cent; ***=significance at the 1 per cent.

Fig.1

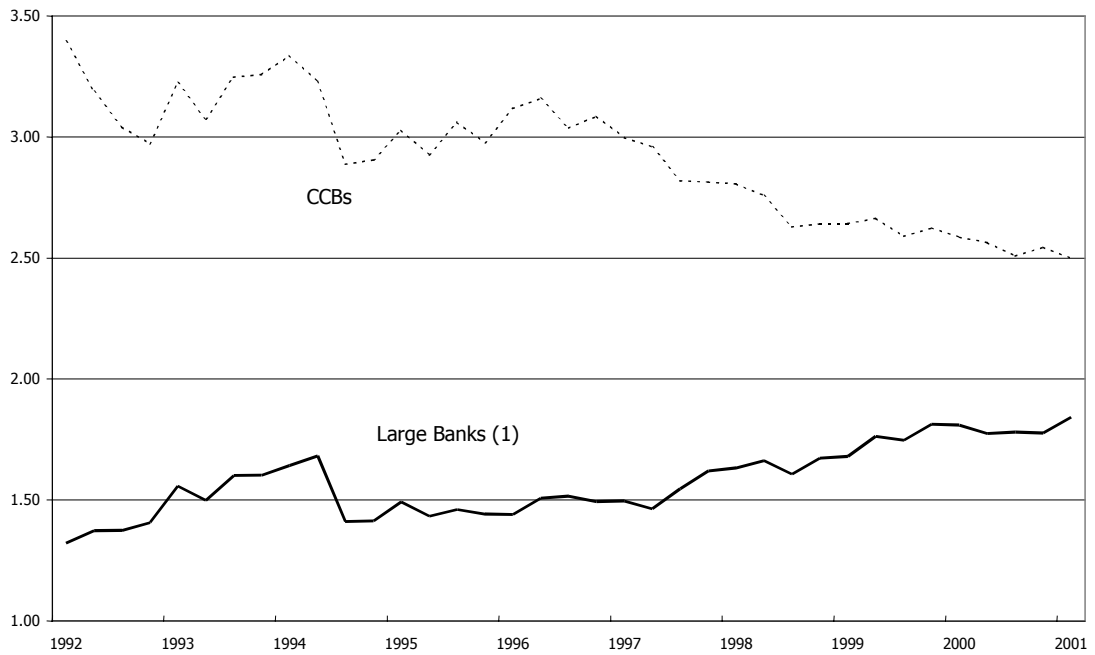
Capital and reserves (1)
(as a percentage of total assets)



Source: Bank of Italy, supervisory reports.
(1) Large banks are those with more than 10 billions of euros at 2001:3.

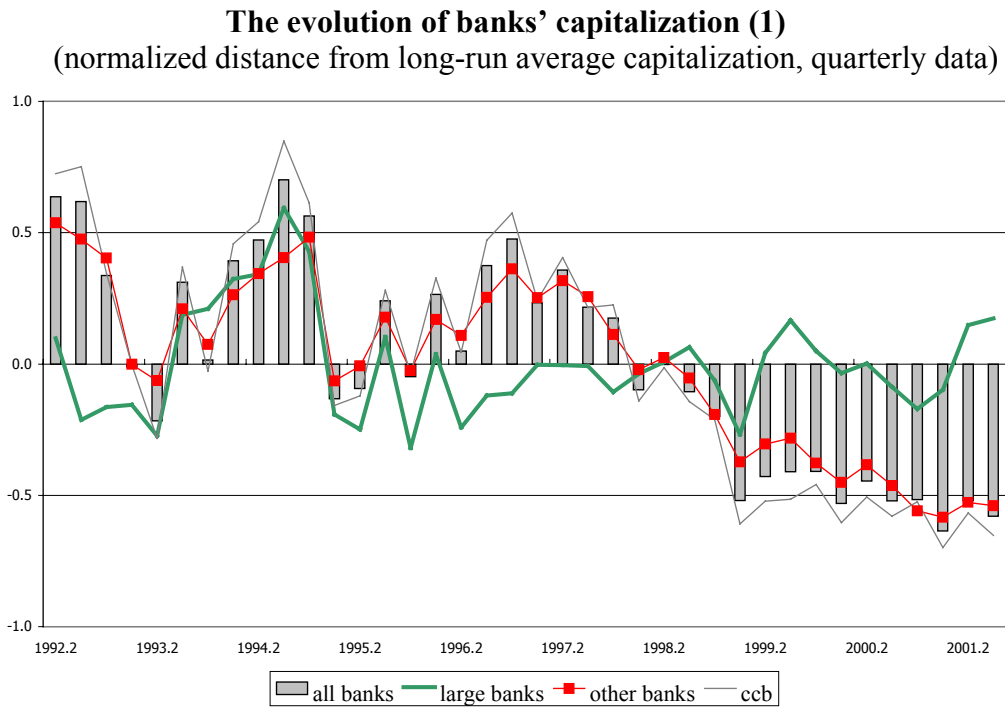
Fig.2

Capital requirement to regulatory capital ratio
(percentages)



Source: Bank of Italy, supervisory reports.
(1) Large banks are those with more than 10 billions of euros at 2001:3.

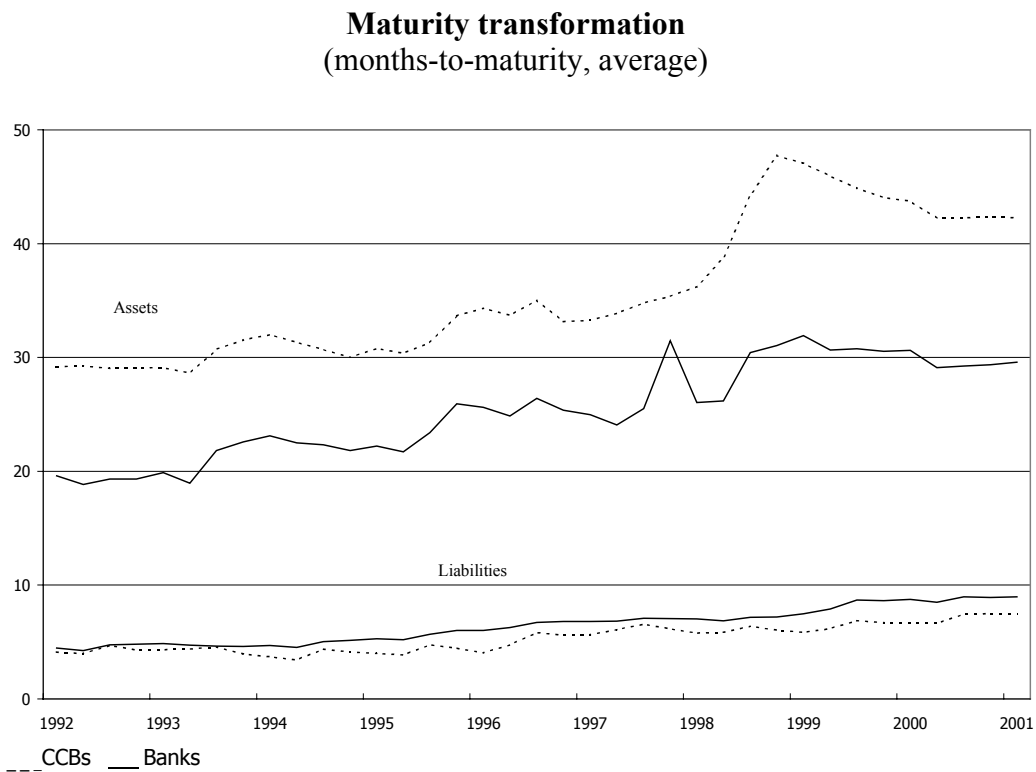
Fig. 3



Source: Bank of Italy, supervisory reports.

(1) Large banks are those with more than 10 billions of euros at 2001.3.

Fig. 4



Source: Bank of Italy, supervisory reports.

References

- Allen F. and Gale D. (1997), "Financial Markets, Intermediaries, and Intertemporal Smoothing", *Journal of Political Economy*, 3, 523-546.
- Altunbas Y., Fazylow O. and Molyneux, P. (2002), "Evidence on the Bank Lending Channel in Europe", *Journal of Banking and Finance*, forthcoming.
- Angeloni I., Buttiglione L., Ferri G. and Gaiotti E. (1995), "The Credit Channel of Monetary Policy across Heterogeneous Banks: The Case of Italy", Banca d'Italia, *Temi di discussione*, No. 256.
- Arellano M. and Bond S.R. (1991), "Some Tests of Specification for Panel Data: Monte Carlo Evidence and an Application to Employment Equations", *Review of Economic Studies*, Vol. 58, No. 2, pp.277-297.
- Bagliano F.C. and Favero C.A. (1995), "The Credit Channel of Monetary Transmission: The Case of Italy", Università Cattolica del Sacro Cuore, Milan, mimeo.
- Barrios V.E. and Blanco J.M. (2001), "The Effectiveness of Bank Capital Adequacy Requirements: A Theoretical and Empirical Approach", IRES, *Discussion Paper*, No.1.
- Basel Committee on Banking Supervision (1988), "International Convergence of Capital Measurements and Capital Standards", July.
- Basel Committee on Banking Supervision (1999), "Capital Requirements and Bank Behavior: the Impact of the Basel Accord", *Working Paper* No. 1, April.
- Bernanke B. and Blinder A.S. (1988), "Is it Money or Credit, or Both or Neither? Credit, Money and Aggregate Demand", *American Economic Review*, Vol. 78, No. 2, pp. 435-9. Paper and Proceedings of the One-Hundredth Annual Meeting of the American Economic Association.
- Besanko D. and Kanatas G. (1996), "The Regulation of Bank Capital: Do Capital Standards Promote Bank Safety?", *Journal of Financial Intermediation*, 5, 160-183.
- Bolton P. and Freixas X. (2001), "Corporate Finance and the Monetary Transmission Mechanism", CEPR, *Discussion Paper Series*, No. 2982.
- Buttiglione L. and Ferri G. (1994), "Monetary Policy Transmission via Lending Rates in Italy: Any Lessons from Recent Experience?", Banca d'Italia, *Temi di discussione*, No. 224.
- Buttiglione L., Del Giovane P. and Gaiotti E. (1997), "The Role of Different Central Bank Rates in the Transmission of Monetary Policy", Banca d'Italia, *Temi di discussione*, No. 305.
- Calem P. and Rob R. (1999), "The Impact of Capital-Based Regulation on Bank Risk Taking", *Journal of Financial Intermediation*, Vol. 8, pp.317-352.
- Calomiris C. W. and Hubbard G.R., (1995), "Internal Finance and Investment: Evidence from the Undistributed Profit Tax of 1936-37", *Journal of Business*, Vol. 68. No. 4.

- Calza A., Gartner C. and Sousa J. (2001), "Modelling the Demand for Loans to the Private Sector in the Euro Area", ECB, *Working Paper*, No. 55.
- Chiades P. and Gambacorta L. (2003), "The Bernanke and Blinder Model in an Open Economy: the Italian Case", *German Economic Review*, forthcoming.
- Coco G. (2000), "On the Use of Collateral", *Journal of Economic Surveys*, Vol. 14, pp. 191-214.
- Cornett M. M. and Tehranian H. (1994), "An Examination of Voluntary Versus Involuntary Security Issuances by Commercial Banks: The Impact of Capital Regulations on Common Stock Returns", *Journal of Financial Economics*, Vol. 35, pp. 99-122.
- de Bondt G. (1999), "Banks and Monetary Transmission in Europe: Empirical Evidence", *BNL Quarterly Review*, Vol. 52, No. 209, pp. 149-68.
- Dewatripont M. and Tirole J. (1994), *The Prudential Regulation of Banks*, Cambridge, Massachusetts, MIT Press.
- Ehrmann M., Gambacorta L., Martinez Pagés J., Sevestre P. and Worms A. (2003), "Financial Systems and the Role of Banks in Monetary Policy Transmission in the Euro Area", in Angeloni I., Kashyap A. and Mojon B., *Monetary Policy Transmission in the Euro Area*, Cambridge, Cambridge University Press.
- Ellis D.M. and Flannery M.J. (1992), "Risk Premia in Large CD Rates: Time Series Evidence on Market Discipline", *Journal of Monetary Economics*, Vol. 30, pp.481-502.
- Fanelli L. and Paruolo P. (1999), "New Evidence on the Transmission Mechanisms of Monetary Policy in Italy before Stage III of European Monetary Union" presented at the 9th Sadiba Conference "Ricerche Quantitative per la Politica Economica", Perugia, December.
- Favero C. A., Flabbi L. and Giavazzi F. (1999), "The Transmission Mechanism of Monetary Policy in Europe: Evidence from Banks' Balance Sheets", *CEPR Discussion Paper*, No. 2303.
- Flannery M.J. (1989), "Capital Regulation and Insured Banks' Choice of Individual Loan Default Risks", *Journal of Monetary Economics*, Vol. 24, pp. 235-58.
- Flannery M.J. and Sorescu S.M. (1996), "Evidence of Market Discipline in Subordinated Debenture Yields: 1983-1991", *Journal of Finance*, Vol. 51, pp. 1347-77.
- Friedman B. (1991), "Comment on 'The Credit Crunch'" by Bernanke B.S. and C.S. Lown, *Brooking Papers on Economic Activity*, No. 2, pp. 240-7.
- Friedman B. and Kuttner K.N. (1993), "Another Look at the Evidence on Money Income Casuality", *Journal of Econometrics*, Vol.57, No. 2, pp. 189-204.
- Furfine C. (2000), Evidence on the Response of US Banks to Changes in Capital Requirements, BIS Working Papers, No. 88.
- Gambacorta L. (2001), "Bank Specific Characteristics and Monetary Policy Transmission: the Case of Italy", *Temi di discussione, Banca d'Italia*, No. 430.

- Gennotte G. and Pyle D. (1991), "Capital Controls and Bank Risk", *Journal of Banking and Finance*, Vol. 15, pp. 805-24.
- Giammarino R.M., Lewis T.R. and Sappington D. (1993), "An Incentive Approach to Banking Regulation", *Journal of Finance*, Vol. 48, No. 4, pp. 1523-42.
- Gorton G. and Rosen R. (1996), "Corporate Control, Portfolio Choice, and the Decline of Banking", *Journal of Finance*, Vol. 50, pp.1377-1420.
- Green C.J. (1998), "Banks as Interest Rate Managers", *Journal of Financial Services Research*, Vol. 14, No. 3, pp. 189-208.
- Hancock D., Laing J.A. and Wilcox J.A. (1995), "Bank Capital Shocks: Dynamic Effects on Securities, Loans, and Capital", *Journal of Banking and Finance*, Vol. 19, pp.661-77.
- Hellman T., Murdock K., and Stiglitz J. (2000), "Liberalization, Moral Hazard in Banking, and Prudential Regulation: Are Capital Requirement Enough?", *American Economic Review*, March, pp. 147-65.
- Houston J. and C. James (1998), "Do Bank Internal Markets Promote Lending?", *Journal of Banking and Finance*, No.6-8, pp.899-918.
- Kashyap A.K and J.C. Stein (1995), "The Impact of Monetary Policy on Bank Balance Sheets" , *Carnegie – Rochester Conference Series on Public Policy*, Vol. 42, pp.151-195.
- Kashyap A.K. and J.C. Stein (2000), "What Do a Million Observations on Banks Say about the Transmission of Monetary Policy?", *American Economic Review*, Vol. 90, No.3, pp.407-428.
- Kashyap A.K., Stein J.C. and Wilcox D.W. (1993), "Monetary Policy and Credit Conditions: Evidence from the Composition of External Finance", *American Economic Review*, Vol. 83, No.1, pp.78-98.
- Keeley M.C. (1990), "Deposit Insurance, Risk and Market Power in Banking", *American Economic Review*, Vol. 80, pp. 305-60.
- Kim D. and Santomero A. M. (1988), "Risk in Banking and Capital Regulation", *Journal of Finance*, Vol. 43, pp.1219-33.
- King S.K. (2002), "A Credit Channel in Europe: Evidence from Banks' Balance Sheets", University of California, Davis, mimeo.
- Kishan R. P. and Opiela T. P. (2000), "Bank Size, Bank Capital and the Bank Lending Channel", *Journal of Money, Credit and Banking*, Vol. 32, No. 1, pp. 121-41.
- Koehn M. and Santomero A. M (1980), "Regulation of Bank Capital and Portfolio Risk", *Journal of Finance*, Vol. 35, pp. 1235-1244.
- Kwan S. and Eisenbeis R. A. (1997), "Bank Risk, Capitalization, and Operating Efficiency", *Journal of Financial Service Research*, Vol. 12, No. 2-3, pp. 117-31.
- Leland H. E. and Pyle D. H. (1977), "Informational Asymmetries, Financial Structures and Financial Intermediation", *The Journal of Finance*, Vol. 32, pp. 371-87.
- Lim G.C. (2000), "Bank Interest Rate Adjustments: Are They Asymmetric?", *The Economic Record*, Vol. 77, no. 237, pp.135-147.

- Myers S.C. and Majluf N. S. (1984), "Corporate Finance and Investment Decisions when Firms Have Information that Investors Do Not Have", *Journal of Financial Economics*, Vol. 13, pp.187-221.
- Rao C. R. (1973), *Linear Statistical Inference and its Applications*, New York, John Wiley and Sons.
- Repullo R. (2000), "Who Should Act as Lender of Last Resort? An Incomplete Contracts Model", *Journal of Money, Credit and Banking*, Vol. 32, pp. 580-605.
- Rime B. (2001), "Capital Requirements and Bank Behavior: Empirical Evidence for Switzerland", *Journal of Banking and Finance*, No.4, pp.789-805.
- Rochet J. C. (1992), "Capital Requirements and the Behavior of Commercial Banks", *European Economic Review*, Vol. 36, pp.733-62.
- Romer C.D. and Romer D.H. (1990), "New Evidence on the Monetary Transmission Mechanism", *Brooking Paper on Economic Activity*, No. 1, 1990, pp.149-213.
- Santomero A.M. (1984), "Modeling the Banking Firm: A Survey", *Journal of Money Credit and Banking*, Vo. 16, No. 4, pp. 576-602.
- Sheldon G. (1996), "Capital Adequacy Rules and the Risk-Seeking Behavior of Banks: A Firm-Level Analysis", *Swiss Journal of Economics and Statistics*, Vol. 132, pp. 709-734.
- Stein J. C. (1998), "An Adverse-Selection Model of Bank Asset and Liability Management with Implications for the Transmission of Monetary Policy", *RAND Journal of Economics*, Vol. 29, No. 3, pp. 466-86.
- Thakor A.V. (1996), "Capital Requirements, Monetary Policy, and Aggregate Bank Lending: Theory and Empirical Evidence", *The Journal of Finance*, Vol. 51, No. 1, pp. 279-324.
- Van den Heuvel S.J. (2001a), "The Bank Capital Channel of Monetary Policy", University of Pennsylvania, mimeo.
- Van den Heuvel S.J. (2001b), "Banking Conditions and the Effects of Monetary Policy: Evidence from U.S. States", University of Pennsylvania, mimeo.
- Van den Heuvel S.J. (2003), "Does Bank Capital Matter for Monetary Transmission?", *FRBNY Economic Policy Review*, forthcoming.
- Vander Vennet R. and Van Landshoot A. (2002), "How Do Internationalization, Diversification and Capitalization Affect Bank Credit Risk? Evidence from Bank Stock Market Returns", paper presented at the 17th European Economic Association Annual Conference (Venice, 22-24 August).
- Vlaar P.J.G. (2000), "Capital Requirements and Competition in the Banking Industry", De Nederlandsche Bank, *Research Memorandum WO&E*, No. 634.
- Wall L.D. and Peterson D.R. (1987), "The Effect of Capital Adequacy Guidelines on Large Bank Holding Companies", *Journal of Banking and Finance*, Vol. 11, No. 4, pp.581-600.

RECENTLY PUBLISHED TEMI(*)

- No. 460 — *Dealing with forward-looking expectations and policy rules in quantifying the channels of transmission of monetary policy*, by F. ALTISSIMO, A. LOCARNO and S. SIVIERO (December 2002).
- No. 461 — *Macroeconomics of international price discrimination*, by G. CORSETTI and L. DEDOLA (December 2002).
- No. 462 — *Non-response behaviour in the Bank of Italy's Survey of Household Income and Wealth*, by G. DA LESSIO and I. FAIELLA (December 2002).
- No. 463 — *Metodologie di stima dell'economia sommersa: un'applicazione al caso italiano*, by R. ZIZZA (December 2002).
- No. 464 — *Consolidation and efficiency in the financial sector: a review of the international evidence*, by D. AMEL, C. BARNES, F. PANETTA and C. SALLEO (December 2002).
- No. 465 — *Human capital, technical change and the welfare state*, by R. BÉABOU (December 2002).
- No. 466 — *What do we learn from recall consumption data?*, by E. BATTISTIN, R. MINIACI and G. WEBER (February 2003).
- No. 467 — *Evoluzione del sistema bancario e finanziamento dell'economia nel Mezzogiorno*, by F. PANETTA (March 2003).
- No. 468 — *Transaction technology innovation and demand for overnight deposits in Italy*, by F. COLUMBA (March 2003).
- No. 469 — *Sunk costs of exports*, by M. BUGAMELLI and L. INFANTE (March 2003).
- No. 470 — *Testing against stochastic trend and seasonality in the presence of unattended breaks and unit roots*, by F. Busetti and A. M. R. TAYLOR (March 2003).
- No. 471 — *Tax credit policy and firms' behaviour: the case of subsidies to open-end labour contracts in Italy*, by P. CIPOLLONE and A. GUELFÌ (April 2003).
- No. 472 — *Gaussian inference on certain long-range dependent volatility models*, by P. ZAFFARONI (June 2003).
- No. 473 — *Revisiting the implications of heterogeneity in financial market participation for the C-CAPM*, by M. PAIELLA (June 2003).
- No. 474 — *Identifying the sources of local productivity growth*, by F. CINGANO and F. SCHIVARDI (June 2003).
- No. 475 — *The Italian overnight market: microstructure effects, the martingale hypothesis and the payment system*, by E. BARUCCI, C. IMPENNA and R. RENÒ (June 2003).
- No. 476 — *Tests of seasonal integration and cointegration in multivariate unobserved component models*, by F. Busetti (June 2003).
- No. 477 — *La composizione familiare e l'imposta sul reddito delle persone fisiche: un'analisi degli effetti redistributivi e alcune considerazioni sul benessere sociale*, by M.R. MARINO and C. RAPALLINI (June 2003).
- No. 478 — *Dealing with unexpected shocks to the budget*, by E. GENNARI, R. GIORDANO and S. MOMIGLIANO (June 2003).
- No. 479 — *The effects of bank mergers on credit availability: evidence from corporate data*, by E. BONACCORSI DI PATTI and G. GOBBI (June 2003).
- No. 480 — *Cost efficiency in the retail payment networks: first evidence from the Italian credit card system*, by G. ARDIZZI (June 2003).
- No. 481 — *Bank competition and firm creation*, by E. BONACCORSI DI PATTI and G. DELL'ARICCIA (June 2003).
- No. 482 — *La distribuzione del reddito e della ricchezza nelle regioni italiane*, by L. CANNARI and G. D'ALESSIO (June 2003).
- No. 483 — *Risk aversion, wealth and background risk*, by L. GUIISO and M. PAIELLA (September 2003).
- No. 484 — *What is this thing called confidence? A comparative analysis of consumer indices in eight major countries*, by R. GOLINELLI and G. PARIGI (September 2003).
- No. 485 — *L'utilizzo degli indicatori compositi nell'analisi congiunturale territoriale: un'applicazione all'economia del Veneto*, by P. CHIADES, M. GALLO and A. VENTURINI (September 2003).

(*) Requests for copies should be sent to:
 Banca d'Italia - Servizio Studi - Divisione Biblioteca e pubblicazioni - Via Nazionale, 91 - 00184 Rome
 (fax 0039 06 47922059). They are available on the Internet at www.bancaditalia.it

"TEMI" LATER PUBLISHED ELSEWHERE

1999

- L. GUISO and G. PARIGI, *Investment and demand uncertainty*, Quarterly Journal of Economics, Vol. 114 (1), pp. 185-228, **TD No. 289 (November 1996)**.
- A. F. POZZOLO, *Gli effetti della liberalizzazione valutaria sulle transazioni finanziarie dell'Italia con l'estero*, Rivista di Politica Economica, Vol. 89 (3), pp. 45-76, **TD No. 296 (February 1997)**.
- A. CUKIERMAN and F. LIPPI, *Central bank independence, centralization of wage bargaining, inflation and unemployment: theory and evidence*, European Economic Review, Vol. 43 (7), pp. 1395-1434, **TD No. 332 (April 1998)**.
- P. CASELLI and R. RINALDI, *La politica fiscale nei paesi dell'Unione europea negli anni novanta*, Studi e note di economia, (1), pp. 71-109, **TD No. 334 (July 1998)**.
- A. BRANDOLINI, *The distribution of personal income in post-war Italy: Source description, data quality, and the time pattern of income inequality*, Giornale degli economisti e Annali di economia, Vol. 58 (2), pp. 183-239, **TD No. 350 (April 1999)**.
- L. GUISO, A. K. KASHYAP, F. PANETTA and D. TERLIZZESE, *Will a common European monetary policy have asymmetric effects?*, Economic Perspectives, Federal Reserve Bank of Chicago, Vol. 23 (4), pp. 56-75, **TD No. 384 (October 2000)**.

2000

- P. ANGELINI, *Are Banks Risk-Averse? Timing of the Operations in the Interbank Market*, Journal of Money, Credit and Banking, Vol. 32 (1), pp. 54-73, **TD No. 266 (April 1996)**
- F. DRUDI and R. GIORDANO, *Default Risk and optimal debt management*, Journal of Banking and Finance, Vol. 24 (6), pp. 861-892, **TD No. 278 (September 1996)**.
- F. DRUDI and R. GIORDANO, *Wage indexation, employment and inflation*, Scandinavian Journal of Economics, Vol. 102 (4), pp. 645-668, **TD No. 292 (December 1996)**.
- F. DRUDI and A. PRATI, *Signaling fiscal regime sustainability*, European Economic Review, Vol. 44 (10), pp. 1897-1930, **TD No. 335 (September 1998)**.
- F. FORNARI and R. VIOLI, *The probability density function of interest rates implied in the price of options*, in: R. Violi, (ed.) , *Mercati dei derivati, controllo monetario e stabilità finanziaria*, Il Mulino, Bologna, **TD No. 339 (October 1998)**.
- D. J. MARCHETTI and G. PARIGI, *Energy consumption, survey data and the prediction of industrial production in Italy*, Journal of Forecasting, Vol. 19 (5), pp. 419-440, **TD No. 342 (December 1998)**.
- A. BAFFIGI, M. PAGNINI and F. QUINTILIANI, *Localismo bancario e distretti industriali: assetto dei mercati del credito e finanziamento degli investimenti*, in: L.F. Signorini (ed.), *Lo sviluppo locale: un'indagine della Banca d'Italia sui distretti industriali*, Donzelli, **TD No. 347 (March 1999)**.
- A. SCALIA and V. VACCA, *Does market transparency matter? A case study*, in: *Market Liquidity: Research Findings and Selected Policy Implications*, Basel, Bank for International Settlements, **TD No. 359 (October 1999)**.
- F. SCHIVARDI, *Rigidità nel mercato del lavoro, disoccupazione e crescita*, Giornale degli economisti e Annali di economia, Vol. 59 (1), pp. 117-143, **TD No. 364 (December 1999)**.
- G. BODO, R. GOLINELLI and G. PARIGI, *Forecasting industrial production in the euro area*, Empirical Economics, Vol. 25 (4), pp. 541-561, **TD No. 370 (March 2000)**.
- F. ALTISSIMO, D. J. MARCHETTI and G. P. ONETO, *The Italian business cycle: Coincident and leading indicators and some stylized facts*, Giornale degli economisti e Annali di economia, Vol. 60 (2), pp. 147-220, **TD No. 377 (October 2000)**.
- C. MICHELACCI and P. ZAFFARONI, *(Fractional) Beta convergence*, Journal of Monetary Economics, Vol. 45, pp. 129-153, **TD No. 383 (October 2000)**.

- R. DE BONIS and A. FERRANDO, *The Italian banking structure in the nineties: testing the multimarket contact hypothesis*, *Economic Notes*, Vol. 29 (2), pp. 215-241, **TD No. 387 (October 2000)**.
- 2001
- M. CARUSO, *Stock prices and money velocity: A multi-country analysis*, *Empirical Economics*, Vol. 26 (4), pp. 651-72, **TD No. 264 (February 1996)**.
- P. CIPOLLONE and D. J. MARCHETTI, *Bottlenecks and limits to growth: A multisectoral analysis of Italian industry*, *Journal of Policy Modeling*, Vol. 23 (6), pp. 601-620, **TD No. 314 (August 1997)**.
- P. CASELLI, *Fiscal consolidations under fixed exchange rates*, *European Economic Review*, Vol. 45 (3), pp. 425-450, **TD No. 336 (October 1998)**.
- F. ALTISSIMO and G. L. VIOLANTE, *Nonlinear VAR: Some theory and an application to US GNP and unemployment*, *Journal of Applied Econometrics*, Vol. 16 (4), pp. 461-486, **TD No. 338 (October 1998)**.
- F. NUCCI and A. F. POZZOLO, *Investment and the exchange rate*, *European Economic Review*, Vol. 45 (2), pp. 259-283, **TD No. 344 (December 1998)**.
- L. GAMBACORTA, *On the institutional design of the European monetary union: Conservatism, stability pact and economic shocks*, *Economic Notes*, Vol. 30 (1), pp. 109-143, **TD No. 356 (June 1999)**.
- P. FINALDI RUSSO and P. ROSSI, *Credit constraints in Italian industrial districts*, *Applied Economics*, Vol. 33 (11), pp. 1469-1477, **TD No. 360 (December 1999)**.
- A. CUKIERMAN and F. LIPPI, *Labor markets and monetary union: A strategic analysis*, *Economic Journal*, Vol. 111 (473), pp. 541-565, **TD No. 365 (February 2000)**.
- G. PARIGI and S. SIVIERO, *An investment-function-based measure of capacity utilisation, potential output and utilised capacity in the Bank of Italy's quarterly model*, *Economic Modelling*, Vol. 18 (4), pp. 525-550, **TD No. 367 (February 2000)**.
- F. BALASSONE and D. MONACELLI, *Emu fiscal rules: Is there a gap?*, in: M. Bordignon and D. Da Empoli (eds.), *Politica fiscale, flessibilità dei mercati e crescita*, Milano, Franco Angeli, **TD No. 375 (July 2000)**.
- A. B. ATKINSON and A. BRANDOLINI, *Promise and pitfalls in the use of "secondary" data-sets: Income inequality in OECD countries*, *Journal of Economic Literature*, Vol. 39 (3), pp. 771-799, **TD No. 379 (October 2000)**.
- D. FOCARELLI and A. F. POZZOLO, *The determinants of cross-border bank shareholdings: An analysis with bank-level data from OECD countries*, *Journal of Banking and Finance*, Vol. 25 (12), pp. 2305-2337, **TD No. 382 (October 2000)**.
- M. SBRACIA and A. ZAGHINI, *Expectations and information in second generation currency crises models*, *Economic Modelling*, Vol. 18 (2), pp. 203-222, **TD No. 391 (December 2000)**.
- F. FORNARI and A. MELE, *Recovering the probability density function of asset prices using GARCH as diffusion approximations*, *Journal of Empirical Finance*, Vol. 8 (1), pp. 83-110, **TD No. 396 (February 2001)**.
- P. CIPOLLONE, *La convergenza dei salari manifatturieri in Europa*, *Politica economica*, Vol. 17 (1), pp. 97-125, **TD No. 398 (February 2001)**.
- E. BONACCORSI DI PATTI and G. GOBBI, *The changing structure of local credit markets: Are small businesses special?*, *Journal of Banking and Finance*, Vol. 25 (12), pp. 2209-2237, **TD No. 404 (June 2001)**.
- G. MESSINA, *Decentramento fiscale e perequazione regionale. Efficienza e redistribuzione nel nuovo sistema di finanziamento delle regioni a statuto ordinario*, *Studi economici*, Vol. 56 (73), pp. 131-148, **TD No. 416 (August 2001)**.

2002

- R. CESARI and F. PANETTA, *Style, fees and performance of Italian equity funds*, Journal of Banking and Finance, Vol. 26 (1), **TD No. 325 (January 1998)**.
- C. GIANNINI, *"Enemy of none but a common friend of all"? An international perspective on the lender-of-last-resort function*, Essay in International Finance, Vol. 214, Princeton, N. J., Princeton University Press, **TD No. 341 (December 1998)**.
- A. ZAGHINI, *Fiscal adjustments and economic performing: A comparative study*, Applied Economics, Vol. 33 (5), pp. 613-624, **TD No. 355 (June 1999)**.
- F. ALTISSIMO, S. SIVIERO and D. TERLIZZESE, *How deep are the deep parameters?*, Annales d'Economie et de Statistique, (67/68), pp. 207-226, **TD No. 354 (June 1999)**.
- F. FORNARI, C. MONTICELLI, M. PERICOLI and M. TIVEGNA, *The impact of news on the exchange rate of the lira and long-term interest rates*, Economic Modelling, Vol. 19 (4), pp. 611-639, **TD No. 358 (October 1999)**.
- D. FOCARELLI, F. PANETTA and C. SALLEO, *Why do banks merge?*, Journal of Money, Credit and Banking, Vol. 34 (4), pp. 1047-1066, **TD No. 361 (December 1999)**.
- D. J. MARCHETTI, *Markup and the business cycle: Evidence from Italian manufacturing branches*, Open Economies Review, Vol. 13 (1), pp. 87-103, **TD No. 362 (December 1999)**.
- F. BUSETTI, *Testing for stochastic trends in series with structural breaks*, Journal of Forecasting, Vol. 21 (2), pp. 81-105, **TD No. 385 (October 2000)**.
- F. LIPPI, *Revisiting the Case for a Populist Central Banker*, European Economic Review, Vol. 46 (3), pp. 601-612, **TD No. 386 (October 2000)**.
- F. PANETTA, *The stability of the relation between the stock market and macroeconomic forces*, Economic Notes, Vol. 31 (3), **TD No. 393 (February 2001)**.
- G. GRANDE and L. VENTURA, *Labor income and risky assets under market incompleteness: Evidence from Italian data*, Journal of Banking and Finance, Vol. 26 (2-3), pp. 597-620, **TD No. 399 (March 2001)**.
- A. BRANDOLINI, P. CIPOLLONE and P. SESTITO, *Earnings dispersion, low pay and household poverty in Italy, 1977-1998*, in D. Cohen, T. Piketty and G. Saint-Paul (eds.), *The Economics of Rising Inequalities*, pp. 225-264, Oxford, Oxford University Press, **TD No. 427 (November 2001)**.
- L. CANNARI and G. D'ALESSIO, *La distribuzione del reddito e della ricchezza nelle regioni italiane*, Rivista Economica del Mezzogiorno (Trimestrale della SVIMEZ), Vol. XVI(4), pp. 809-847, Il Mulino, **TD No. 482 (June 2003)**.

2003

- F. SCHIVARDI, *Reallocation and learning over the business cycle*, European Economic Review, , Vol. 47 (1), pp. 95-111, **TD No. 345 (December 1998)**.
- P. CASELLI, P. PAGANO and F. SCHIVARDI, *Uncertainty and slowdown of capital accumulation in Europe*, Applied Economics, Vol. 35 (1), pp. 79-89, **TD No. 372 (March 2000)**.
- M. PERICOLI and M. SBRACIA, *A Primer on Financial Contagion*, Journal of Economic Surveys, **TD No. 407 (June 2001)**.
- M. SBRACIA and A. ZAGHINI, *The role of the banking system in the international transmission of shocks*, World Economy, **TD No. 409 (June 2001)**.
- E. GAIOTTI and A. GENERALE, *Does monetary policy have asymmetric effects? A look at the investment decisions of Italian firms*, Giornale degli Economisti e Annali di Economia, Vol. 61 (1), pp. 29-59, **TD No. 429 (December 2001)**.
- F. SPADAFORA, *Financial crises, moral hazard and the speciality of the international market: further evidence from the pricing of syndicated bank loans to emerging markets*, Emerging Markets Review, Vol. 4 (2), pp. 167-198, **TD No. 438 (March 2002)**.

D. FOCARELLI and F. PANETTA, *Are mergers beneficial to consumers? Evidence from the market for bank deposits*, *American Economic Review*, Vol. 93 (4), pp. 1152-1172, **TD No. 448 (July 2002)**.

FORTHCOMING

A. F. POZZOLO, *Research and development regional spillovers, and the localisation of economic activities*, *The Manchester School*, **TD No. 331 (March 1998)**.

L. GAMBACORTA, *Asymmetric bank lending channels and ECB monetary policy*, *Economic Modelling*, **TD No. 340 (October 1998)**.

F. LIPPI, *Strategic monetary policy with non-atomistic wage-setters*, *Review of Economic Studies*, **TD No. 374 (June 2000)**.

P. ANGELINI and N. CETORELLI, *Bank competition and regulatory reform: The case of the Italian banking industry*, *Journal of Money, Credit and Banking*, **TD No. 380 (October 2000)**.

P. CHIADES and L. GAMBACORTA, *The Bernanke and Blinder model in an open economy: The Italian case*, *German Economic Review*, **TD No. 388 (December 2000)**.

P. PAGANO and F. SCHIVARDI, *Firm size distribution and growth*, *Scandinavian Journal of Economics*, **TD No. 394 (February 2001)**.

L. GAMBACORTA, *The Italian banking system and monetary policy transmission: Evidence from bank level data*, in: I. Angeloni, A. Kashyap and B. Mojon (eds.), *Monetary Policy Transmission in the Euro Area*, Cambridge, Cambridge University Press, **TD No. 430 (December 2001)**.

M. EHRMANN, L. GAMBACORTA, J. MARTÍNEZ PAGÉS, P. SEVESTRE and A. WORMS, *Financial systems and the role of banks in monetary policy transmission in the euro area*, in: I. Angeloni, A. Kashyap and B. Mojon (eds.), *Monetary Policy Transmission in the Euro Area*, Cambridge, Cambridge University Press, **TD No. 432 (December 2001)**.

D. FOCARELLI, *Bootstrap bias-correction procedure in estimating long-run relationships from dynamic panels, with an application to money demand in the euro area*, *Economic Modelling*, **TD No. 440 (March 2002)**.

A. BAFFIGI, R. GOLINELLI and G. PARIGI, *Bridge models to forecast the euro area GDP*, *International Journal of Forecasting*, **TD No. 456 (December 2002)**.

F. Busetti and A. M. ROBERT TAYLOR, *Testing against stochastic trend and seasonality in the presence of unattended breaks and unit roots*, *Journal of Econometrics*, **TD No. 470 (February 2003)**.