



BANCA D'ITALIA
EUROSISTEMA

Supplements to the Statistical Bulletin

Monetary and Financial Indicators

Public Finance Statistics in the European Union

New series

Volume XXIV - 5 December 2014

Number

65

Notice to Readers

From this issue on this Supplement shows, for European countries, data compiled following the new European System of Accounts (ESA2010) starting from the year 1995. Some countries have not yet produced ESA2010 data for the whole period 1995-2013; data are available for Croatia starting from 2001, for Lithuania from 2004, for Greece from 2006, for Estonia and Poland from 2010. For the years in which ESA2010 data are not available, these countries have been excluded from the calculation of averages for the euro area, the European Union and European Union countries outside the euro area.

Time series of ESA95 data for the 1995-2013 period have been discontinued and are available on request; requests should be addressed to statistiche@bancaditalia.it.

Contents

Figure 1	-	Net borrowing (+)/lending (-) in 2013
Figure 2	-	Gross public debt in 2013
Figure 3	-	Total revenue in 2013
Figure 4	-	Total expenditure excluding interest payments in 2013
Figure 5	-	Primary net borrowing (+)/lending(-) in 2013
Figure 6	-	Interest payments in 2013
Figure 7	-	Tax revenue and social security contributions in the leading EU countries
Figure 8	-	Current expenditure, excluding interest payments in the leading EU countries
Figure 9	-	Interest payments in the leading EU countries
Figure 10	-	Investment in the leading EU countries
Table 1	- (TUEE0100)	- Net borrowing (+)/lending (-)
Table 2	- (TUEE0110)	- Primary net borrowing (+)/lending (-)
Table 3	- (TUEE0120)	- Current account balance
Table 4	- (TUEE0130)	- Capital account balance
Table 5	- (TUEE0140)	- Gross public debt
Table 6	- (TUEE0150)	- Total revenue
Table 7	- (TUEE0160)	- Current revenue
Table 8	- (TUEE0170)	- Tax revenue and social security contributions
Table 9	- (TUEE0180)	- Tax revenue and social security contributions, excluding capital taxes
Table 10	- (TUEE0210)	- Direct taxes
Table 11	- (TUEE0220)	- Indirect taxes
Table 12	- (TUEE0230)	- Social security contributions
Table 13	- (TUEE0240)	- Total expenditure
Table 14	- (TUEE0250)	- Total expenditure, excluding interest payments
Table 15	- (TUEE0260)	- Current expenditure
Table 16	- (TUEE0270)	- Current expenditure, excluding interest payments
Table 17	- (TUEE0280)	- Interest payments
Table 18	- (TUEE0290)	- Final consumption expenditure
Table 19	- (TUEE0300)	- Compensation of employees
Table 20	- (TUEE0330)	- Social benefits other than social transfers in kind
Table 21	- (TUEE0400)	- Capital expenditure
Table 22	- (TUEE0350)	- Investment
Methodological Appendix		
General information		

Figure 1

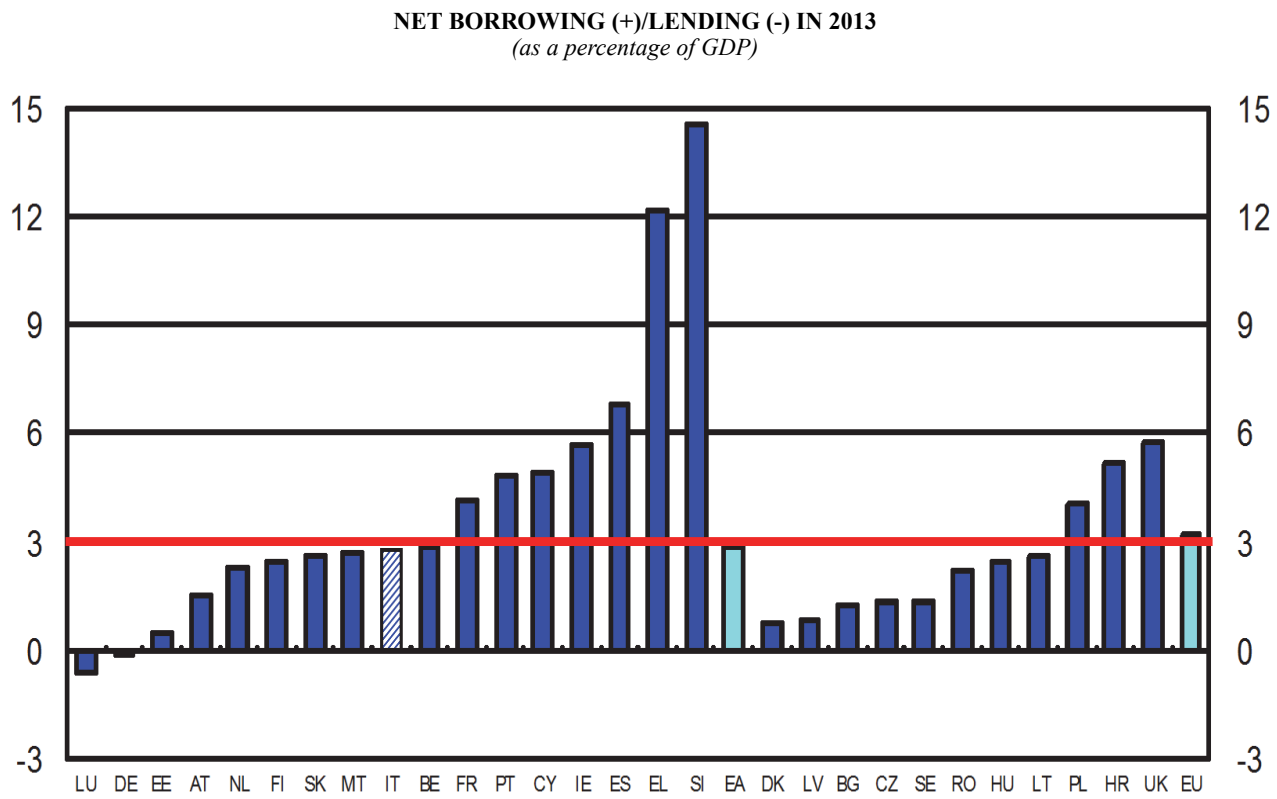
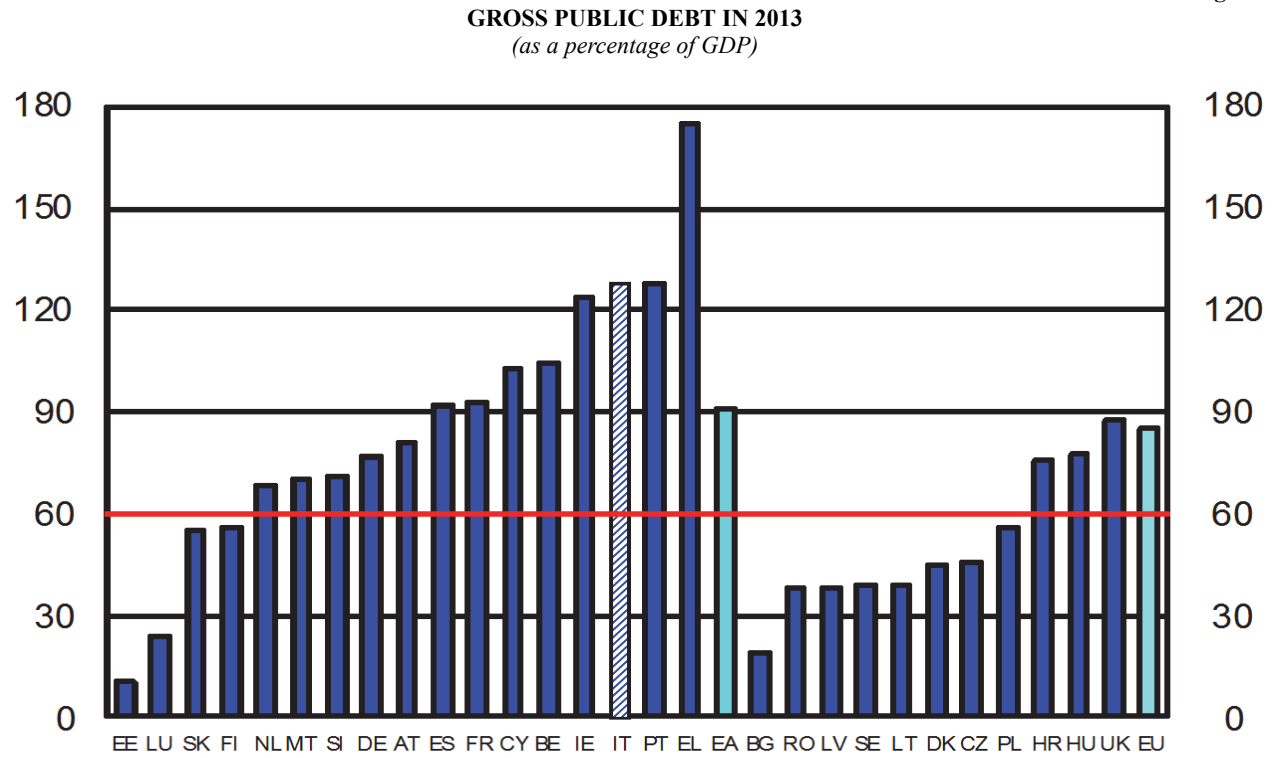


Figure 2



Public Finance Statistics in the European Union

Figure 3

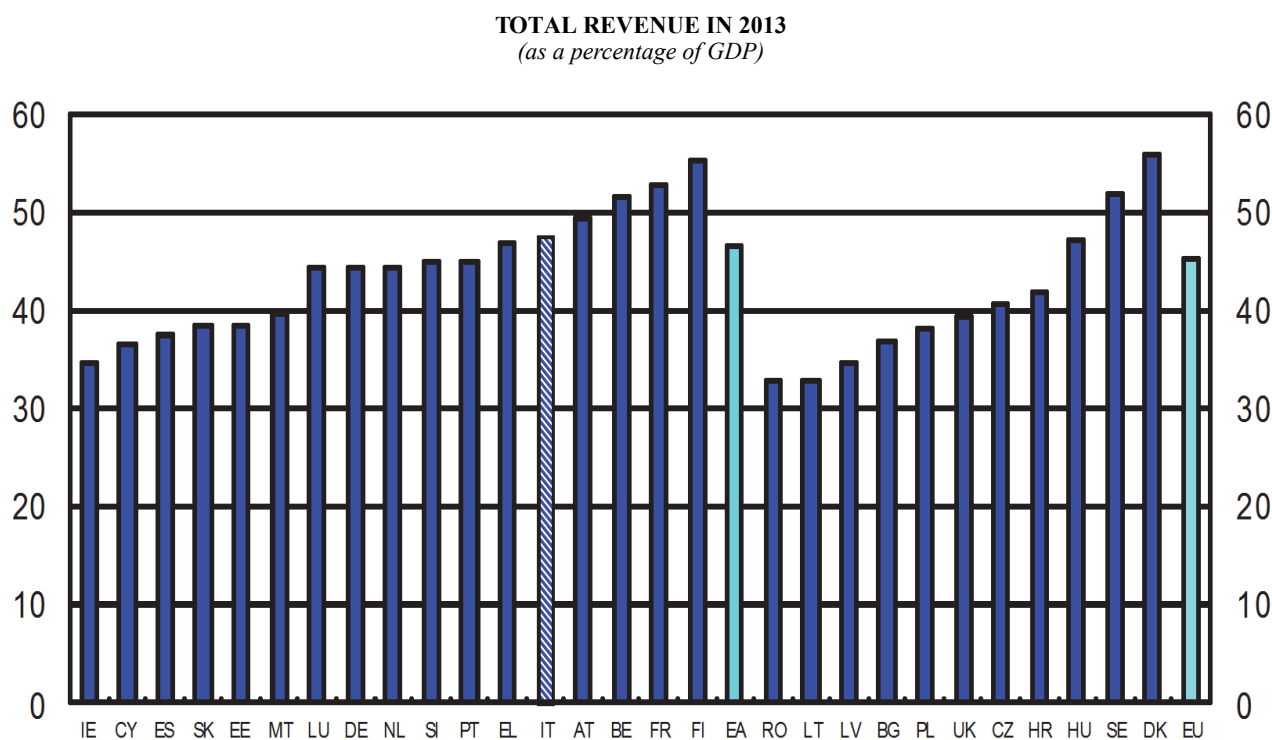
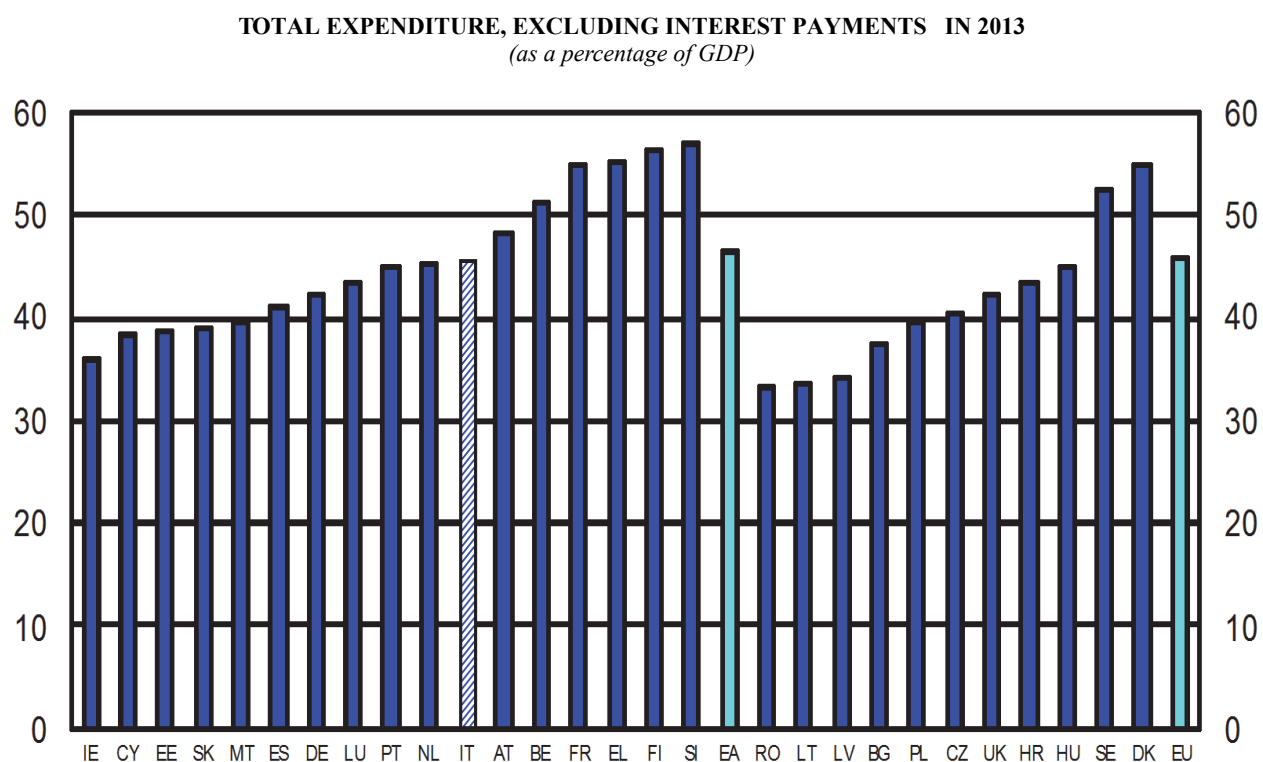


Figure 4



Public Finance Statistics in the European Union

Figure 5

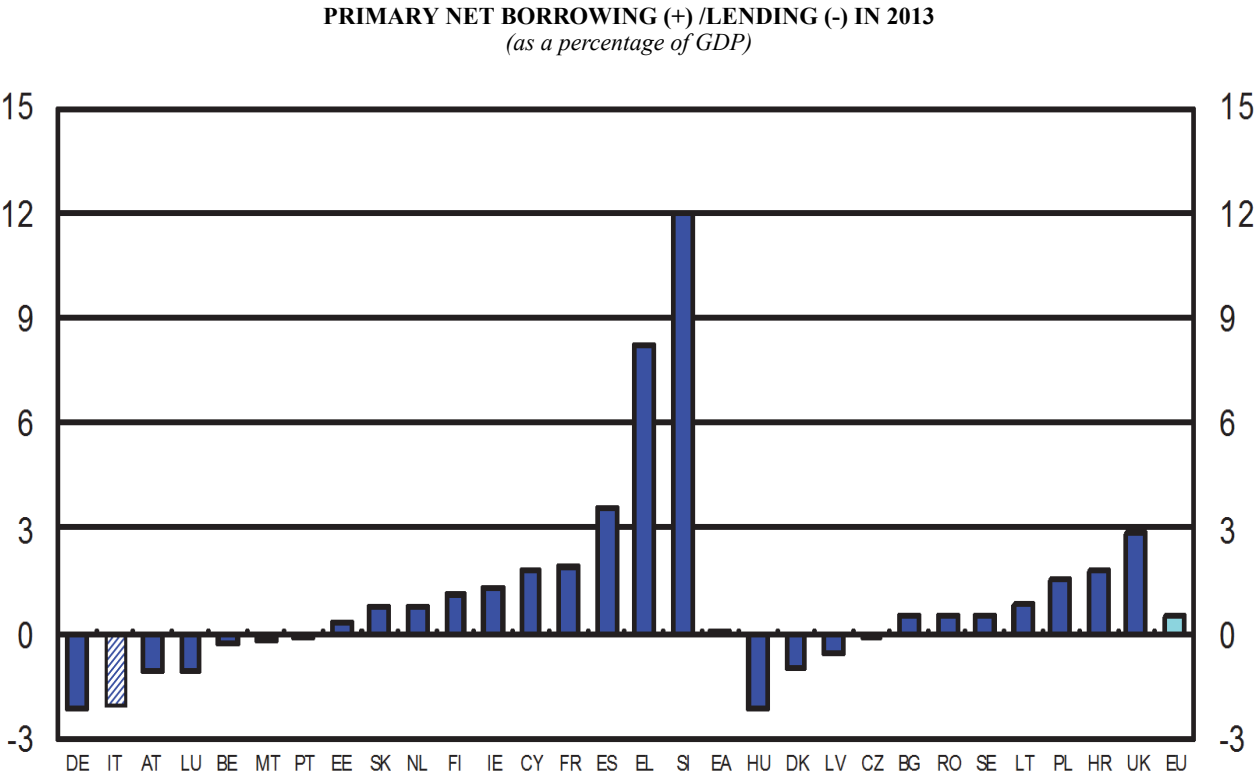
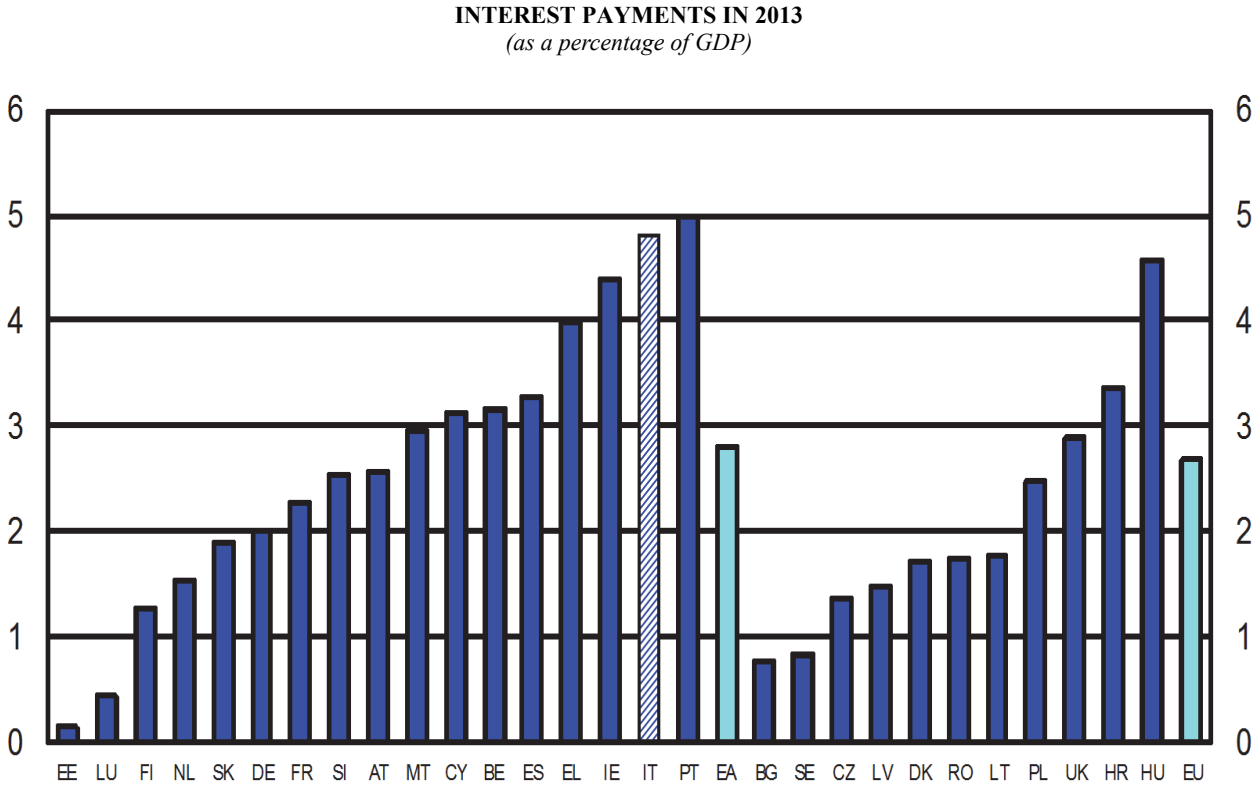


Figure 6



Public Finance Statistics in the European Union

Figure 7

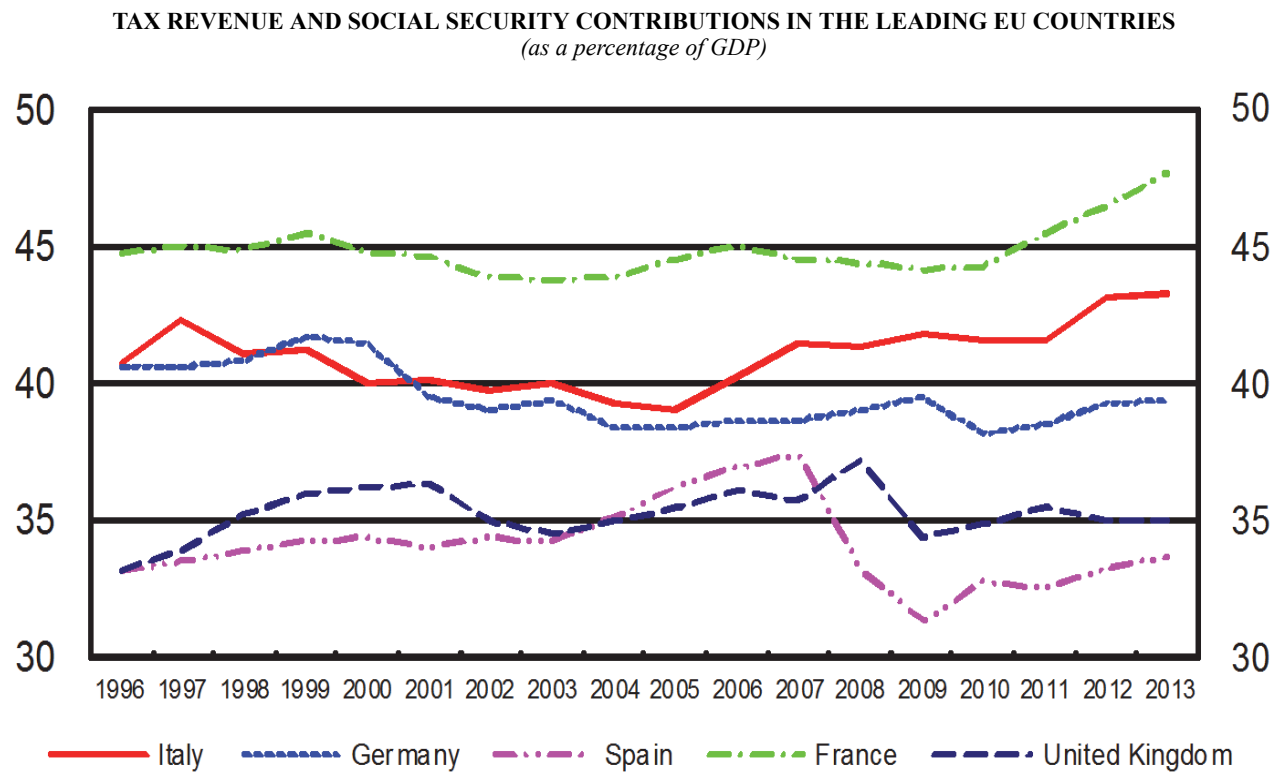


Figure 8

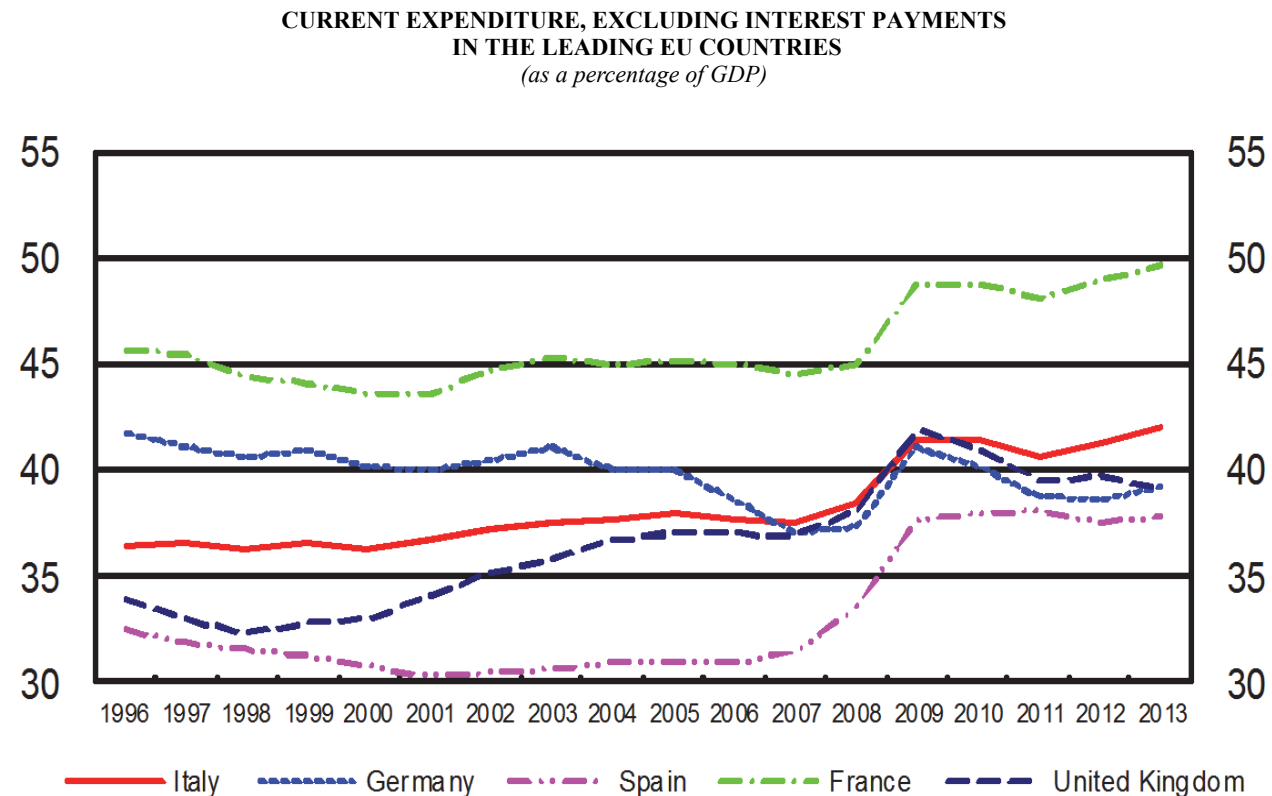


Figure 9

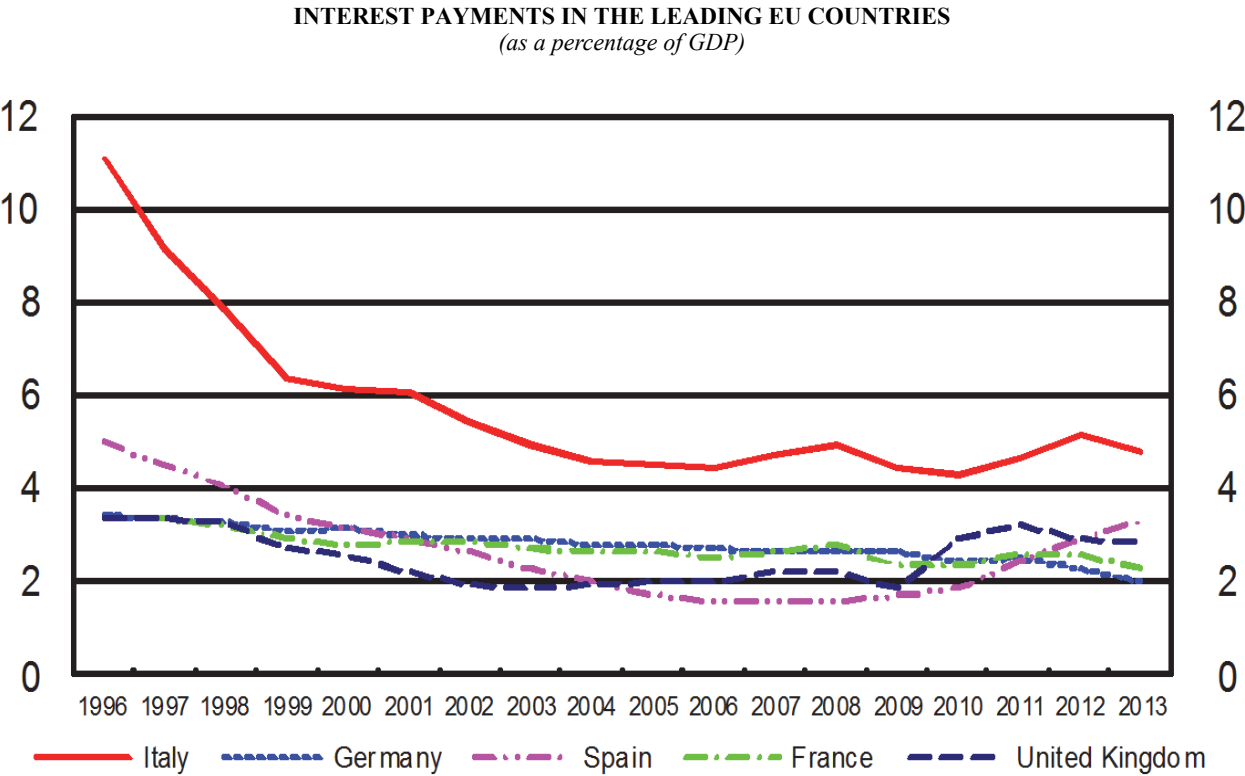
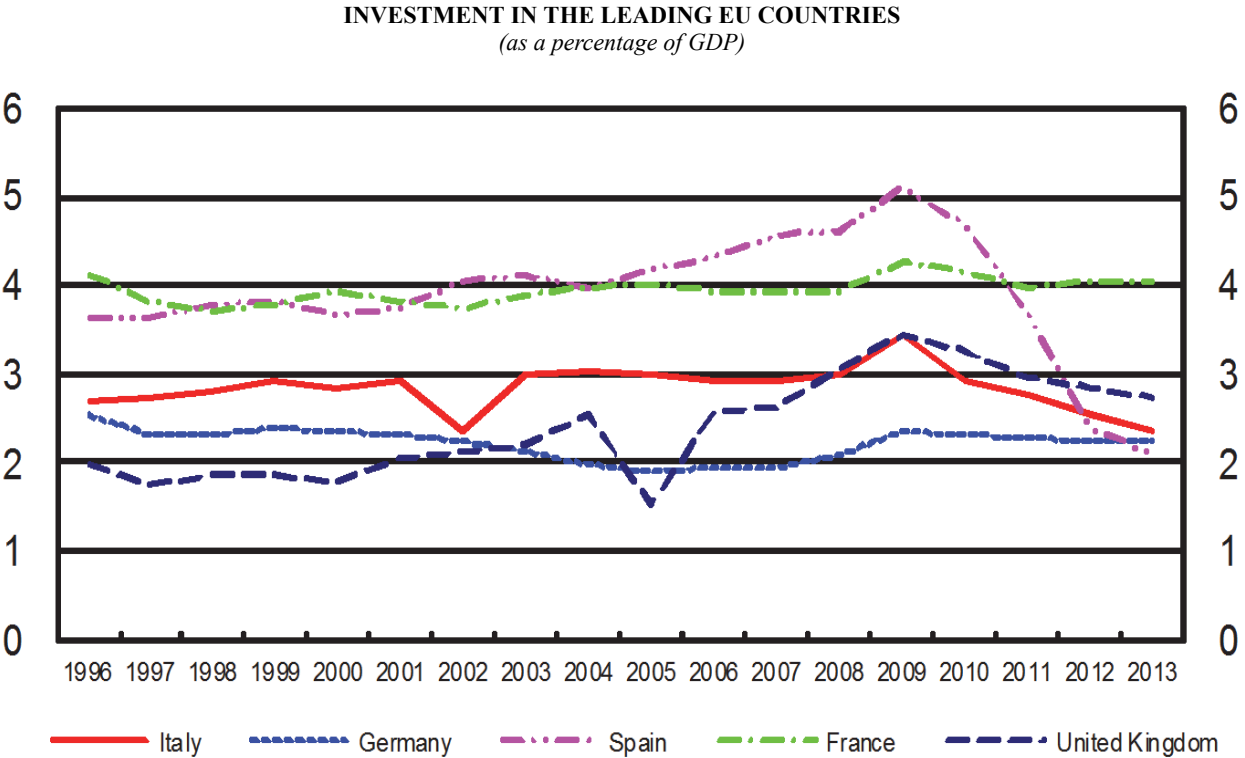


Figure 10



Public Finance Statistics in the European Union

Table 1
TUEE0100

Net borrowing (+)/lending (-)

(as a percentage of GDP)

	1995	1996	1997	1998	1999	2000	2001	2002	2003	2004	2005	2006	2007	2008	2009	2010	2011	2012	2013
Italy	7.3	6.6	3.0	3.0	1.8	1.3	3.4	3.1	3.4	3.6	4.2	3.6	1.5	2.7	5.3	4.2	3.5	3.0	2.8
Belgium	4.4	4.0	2.3	1.0	0.6	0.1	-0.2	-0.1	1.8	0.2	2.6	-0.2	0.0	1.1	5.5	4.0	3.9	4.1	2.9
Germany	9.3	3.4	2.8	2.4	1.5	-1.0	3.1	3.9	4.1	3.7	3.3	1.5	-0.3	0.0	3.0	4.1	0.9	-0.1	-0.1
Estonia	-0.2	-1.0	0.3	0.5
Ireland	2.2	0.3	-1.3	-2.0	-2.4	-4.8	-0.9	0.3	-0.4	-1.4	-1.6	-2.8	-0.2	7.0	13.9	32.4	12.6	8.0	5.7
Greece	6.1	6.7	9.9	15.2	11.1	10.1	8.6	12.2
Spain	7.0	5.4	3.9	2.9	1.3	1.0	0.5	0.4	0.4	0.0	-1.2	-2.2	-2.0	4.4	11.0	9.4	9.4	10.3	6.8
France	5.1	3.9	3.6	2.4	1.6	1.3	1.4	3.1	3.9	3.5	3.2	2.3	2.5	3.2	7.2	6.8	5.1	4.9	4.1
Cyprus	0.8	3.0	4.7	3.9	4.0	2.2	2.1	4.1	6.0	3.8	2.2	1.1	-3.2	-0.9	5.6	4.8	5.8	5.8	4.9
Luxembourg	-2.4	-1.3	-3.6	-3.4	-3.5	-5.7	-6.0	-2.3	-0.6	1.0	-0.2	-1.4	-4.2	-3.3	0.5	0.6	-0.3	-0.1	-0.6
Malta	3.5	7.7	7.1	9.3	6.7	5.5	6.1	5.4	9.1	4.4	2.7	2.6	2.3	4.2	3.3	3.3	2.6	3.7	2.7
Netherlands	8.6	1.7	1.3	0.9	-0.3	-1.9	0.4	2.1	3.0	1.8	0.3	-0.2	-0.2	-0.2	5.5	5.0	4.3	4.0	2.3
Austria	6.2	4.4	2.4	2.7	2.6	2.1	0.6	1.3	1.7	4.8	2.5	2.5	1.3	1.5	5.3	4.5	2.6	2.3	1.5
Portugal	5.2	4.7	3.7	4.4	3.0	3.2	4.8	3.3	4.4	6.2	6.2	4.3	3.0	3.8	9.8	11.2	7.4	5.5	4.9
Slovenia	8.2	1.1	2.3	2.3	3.0	3.6	3.9	2.4	2.6	2.2	1.5	1.3	0.1	1.8	6.1	5.7	6.2	3.7	14.6
Slovakia	3.3	9.7	6.2	5.2	7.3	12.1	6.4	8.1	2.7	2.3	2.9	3.6	1.9	2.4	7.9	7.5	4.1	4.2	2.6
Finland	5.9	3.2	1.2	-1.6	-1.7	-6.9	-5.0	-4.1	-2.4	-2.2	-2.6	-3.9	-5.1	-4.2	2.5	2.6	1.0	2.1	2.4
<i>Euro area</i>	7.3	4.2	2.9	2.3	1.4	0.2	1.9	2.6	3.1	2.8	2.5	1.5	0.6	2.1	6.2	6.1	4.1	3.6	2.9
<i>Euro area excluding Italy</i>	7.3	3.7	2.9	2.2	1.3	-0.1	1.6	2.5	3.0	2.6	2.1	1.0	0.4	2.0	6.4	6.5	4.2	3.7	2.9
Bulgaria	7.2	10.1	-0.5	-1.1	-0.1	0.5	-1.0	1.2	0.4	-1.8	-1.0	-1.8	-1.1	-1.6	4.2	3.2	2.0	0.5	1.2
Czech Republic	12.4	3.1	3.5	4.6	3.4	3.5	5.3	6.3	6.4	2.7	3.1	2.3	0.7	2.1	5.5	4.4	2.9	4.0	1.3
Denmark	3.6	2.5	1.2	0.4	-0.9	-1.9	-1.1	0.0	0.1	-2.1	-5.0	-5.0	-5.0	-3.2	2.8	2.7	2.1	3.9	0.7
Croatia	2.1	4.5	4.6	5.1	3.7	3.4	2.5	2.7	5.9	6.0	7.7	5.6	5.2
Latvia	1.4	0.4	-1.4	0.0	3.8	2.8	2.0	2.2	1.6	1.0	0.4	0.6	0.6	4.0	8.9	8.2	3.4	0.8	0.9
Lithuania	1.5	0.5	0.4	1.0	3.3	9.3	6.9	9.0	3.2	2.6
Hungary	8.7	4.4	5.6	7.5	5.1	3.0	4.1	8.9	7.2	6.4	7.9	9.4	5.1	3.7	4.6	4.5	5.5	2.3	2.4
Poland	7.6	4.9	3.7	4.0
Romania	2.0	3.5	4.4	3.2	4.4	4.7	3.5	2.0	1.5	1.2	1.2	2.2	2.9	5.6	8.9	6.6	5.5	3.0	2.2
Sweden	7.0	3.1	1.6	-0.9	-0.8	-3.2	-1.4	1.5	1.3	-0.3	-1.8	-2.2	-3.3	-2.0	0.7	0.0	0.1	0.9	1.3
United Kingdom	5.6	4.1	2.1	0.2	-0.8	-1.2	-0.4	2.0	3.4	3.6	3.5	2.9	3.0	5.1	10.8	9.6	7.6	8.3	5.8
<i>EU excluding euro area</i>	5.8	3.7	2.1	0.4	-0.4	-1.1	-0.2	2.2	3.0	2.7	2.3	1.8	1.6	3.3	8.2	7.2	5.6	5.9	4.2
<i>EU</i>	7.0	4.1	2.7	1.9	0.9	-0.2	1.4	2.5	3.1	2.8	2.4	1.6	0.9	2.4	6.7	6.4	4.5	4.2	3.2
<i>EU excluding Italy</i>	7.0	3.7	2.7	1.7	0.8	-0.4	1.1	2.4	3.0	2.6	2.2	1.2	0.8	2.3	6.9	6.7	4.6	4.4	3.3
United States	4.1	3.0	1.6	0.4	0.0	-0.8	1.4	4.7	5.9	5.4	4.2	3.0	3.5	7.0	12.7	12.0	10.6	8.9	5.6
Japan	4.6	4.9	3.8	10.3	7.1	7.5	6.0	7.7	7.7	5.9	4.8	1.3	2.1	1.9	8.8	8.3	8.8	8.7
Canada	5.2	2.7	-0.2	-0.2	-1.8	-2.9	-0.8	0.0	-0.1	-1.0	-1.7	-1.8	-1.5	0.3	4.5	4.9	3.7	3.3	3.0

Public Finance Statistics in the European Union

Table 2

TUEE0110

Primary net borrowing (+)/lending (-)

(as a percentage of GDP)

	1995	1996	1997	1998	1999	2000	2001	2002	2003	2004	2005	2006	2007	2008	2009	2010	2011	2012	2013
Italy	-3.9	-4.4	-6.2	-4.8	-4.6	-4.8	-2.7	-2.4	-1.6	-1.0	-0.3	-0.9	-3.2	-2.2	0.9	0.0	-1.2	-2.2	-2.0
Belgium	-4.3	-4.4	-5.3	-6.3	-6.2	-6.4	-6.5	-5.7	-3.4	-4.4	-1.6	-4.2	-3.8	-2.7	1.8	0.6	0.5	0.7	-0.3
Germany	5.9	0.0	-0.5	-0.9	-1.5	-4.1	0.0	0.9	1.1	0.9	0.5	-1.2	-3.0	-2.7	0.4	1.6	-1.6	-2.4	-2.2
Estonia	-0.3	-1.2	0.1	0.3
Ireland	-3.0	-4.1	-5.0	-5.4	-4.8	-6.8	-2.4	-1.0	-1.6	-2.5	-2.6	-3.8	-1.2	5.8	11.9	29.4	9.2	3.9	1.3
Greece	1.6	2.1	5.0	10.2	5.2	2.9	3.6	8.2
Spain	2.1	0.3	-0.6	-1.1	-2.1	-2.1	-2.4	-2.2	-1.9	-1.9	-2.9	-3.8	-3.6	2.9	9.3	7.5	7.0	7.4	3.5
France	1.9	0.5	0.3	-0.8	-1.3	-1.5	-1.5	0.2	1.1	0.8	0.5	-0.2	-0.1	0.4	4.8	4.4	2.5	2.3	1.9
Cyprus	-1.1	0.8	2.4	1.0	1.2	-1.0	-1.1	1.1	2.7	0.7	-1.0	-1.9	-6.0	-3.4	3.3	2.7	3.6	2.9	1.8
Luxembourg	-3.0	-1.8	-4.1	-3.9	-3.9	-6.1	-6.3	-2.6	-0.8	0.9	-0.3	-1.6	-4.5	-3.6	0.1	0.2	-0.7	-0.5	-1.1
Malta	1.7	5.7	4.6	6.4	2.9	1.5	2.4	1.5	5.6	0.7	-1.1	-1.1	-1.2	0.9	0.1	0.2	-0.5	0.7	-0.2
Netherlands	3.5	-3.1	-3.2	-3.3	-4.2	-5.2	-2.5	-0.5	0.7	-0.6	-1.9	-2.2	-2.1	-2.2	3.4	3.3	2.6	2.3	0.8
Austria	2.1	0.4	-1.2	-0.9	-0.8	-1.5	-3.0	-2.1	-1.5	1.8	-0.7	-0.6	-1.8	-1.5	2.2	1.6	-0.1	-0.4	-1.1
Portugal	-0.4	-0.1	-0.1	1.2	0.1	0.2	1.8	0.5	1.8	3.6	3.6	1.6	0.1	0.7	6.8	8.2	3.0	0.6	-0.1
Slovenia	6.1	-0.9	0.0	0.2	0.7	1.3	1.6	0.3	0.7	0.6	-0.1	0.0	-1.2	0.7	4.8	4.1	4.3	1.7	12.0
Slovakia	1.0	7.2	3.8	2.7	4.0	8.1	2.5	4.6	0.3	0.2	1.2	2.1	0.6	1.1	6.5	6.2	2.6	2.4	0.7
Finland	2.1	-0.8	-2.9	-5.1	-4.6	-9.6	-7.5	-6.1	-4.3	-3.9	-4.2	-5.4	-6.5	-5.6	1.2	1.3	-0.4	0.7	1.2
<i>Euro area</i>	2.2	-1.0	-1.8	-2.0	-2.5	-3.6	-1.7	-0.8	-0.1	-0.2	-0.4	-1.4	-2.3	-0.8	3.4	3.4	1.1	0.6	0.1
<i>Euro area excluding Italy</i>	3.3	-0.3	-0.9	-1.4	-2.0	-3.3	-1.5	-0.4	0.2	0.0	-0.4	-1.5	-2.1	-0.6	3.9	4.1	1.6	1.2	0.5
Bulgaria	-5.6	-9.0	-7.1	-4.8	-3.6	-3.5	-5.2	-1.1	-1.8	-3.7	-2.6	-3.2	-2.3	-2.5	3.4	2.5	1.3	-0.3	0.5
Czech Republic	11.4	2.0	2.4	3.6	2.5	2.7	4.4	5.2	5.4	1.6	2.0	1.2	-0.4	1.1	4.3	3.1	1.5	2.5	0.0
Denmark	-2.2	-3.1	-3.8	-4.1	-5.0	-5.6	-4.5	-3.1	-2.6	-4.6	-7.0	-6.8	-6.6	-4.6	0.9	0.8	0.1	2.1	-1.0
Croatia	0.3	2.9	3.0	3.4	2.0	1.7	0.9	1.1	3.8	3.7	4.8	2.4	1.8
Latvia	0.6	-0.9	-2.3	-0.7	3.1	1.8	1.1	1.5	0.8	0.3	-0.1	0.1	0.3	3.5	7.4	6.5	1.6	-0.9	-0.6
Lithuania	0.6	-0.3	-0.3	0.3	2.6	8.1	5.1	7.1	1.2	0.9
Hungary	-0.1	-4.7	-2.9	0.4	-1.5	-2.2	-0.6	4.9	3.1	2.0	3.8	5.5	1.0	-0.4	0.1	0.4	1.3	-2.3	-2.2
Poland	5.1	2.4	1.1	1.5
Romania	0.4	1.8	0.0	-0.7	-0.6	0.7	0.1	-0.5	-0.1	-0.2	-0.1	1.4	2.2	4.9	7.4	5.1	3.9	1.2	0.5
Sweden	1.9	-2.1	-3.4	-5.2	-4.6	-6.5	-4.0	-1.4	-0.8	-2.0	-3.6	-3.8	-5.0	-3.5	-0.4	-1.0	-1.0	0.0	0.5
United Kingdom	2.3	0.7	-1.2	-3.1	-3.5	-3.8	-2.7	0.1	1.5	1.7	1.5	0.8	0.7	2.8	8.9	6.7	4.4	5.4	2.9
<i>EU excluding euro area</i>	1.9	-0.2	-1.7	-3.1	-3.5	-3.9	-2.6	0.0	1.1	0.7	0.3	-0.1	-0.4	1.3	6.3	4.7	2.9	3.4	1.8
<i>EU</i>	2.1	-0.9	-1.8	-2.3	-2.7	-3.7	-1.9	-0.6	0.2	0.0	-0.2	-1.0	-1.8	-0.3	4.1	3.7	1.6	1.4	0.5
<i>EU excluding Italy</i>	3.0	-0.3	-1.1	-1.9	-2.4	-3.5	-1.8	-0.3	0.4	0.2	-0.2	-1.1	-1.6	0.0	4.6	4.3	2.0	1.9	0.9
United States	-1.3	-2.2	-3.3	-4.2	-4.1	-4.6	-2.3	1.3	2.4	2.1	0.7	-0.5	0.0	3.6	9.0	8.3	6.7	5.1	2.0
Japan	1.2	1.6	0.5	7.0	3.8	4.4	3.3	5.4	5.6	4.1	3.1	-0.5	0.2	-0.1	6.8	6.3	6.7	6.6
Canada	-4.2	-6.2	-8.5	-8.3	-9.3	-9.9	-7.2	-5.7	-5.3	-5.8	-6.1	-6.0	-5.5	-3.5	0.9	1.3	0.2	0.0	-0.2

Current account balance

(as a percentage of GDP)

	1995	1996	1997	1998	1999	2000	2001	2002	2003	2004	2005	2006	2007	2008	2009	2010	2011	2012	2013
Italy	3.1	2.9	0.1	-0.5	-2.1	-1.4	-1.0	-0.7	0.3	-0.1	0.0	-1.6	-2.7	-1.4	1.1	0.5	0.4	-0.6	-0.1
Belgium	1.6	1.1	-0.8	-2.0	-2.4	-3.0	-2.7	-2.4	-1.1	-1.9	-2.0	-2.4	-2.5	-1.5	2.3	1.2	0.6	0.3	0.0
Germany	-0.5	0.1	-0.2	-0.8	-1.6	-1.9	-0.4	0.5	0.8	0.7	0.3	-1.2	-2.9	-3.0	-0.2	0.0	-2.1	-2.9	-2.8
Estonia	-3.1	-4.0	-4.9	-4.3
Ireland	0.1	-1.7	-3.1	-4.1	-6.5	-7.9	-5.0	-3.4	-3.7	-4.6	-4.8	-6.0	-4.3	1.2	7.2	6.9	5.9	5.4	4.1
Greece	3.1	3.4	5.1	9.9	8.3	8.3	4.2	0.1
Spain	1.3	0.6	-0.8	-1.7	-3.1	-3.4	-4.0	-4.3	-4.2	-4.9	-5.9	-7.1	-7.3	-1.3	4.6	3.7	4.6	3.7	4.0
France	-0.4	-1.0	-1.1	-2.1	-3.1	-3.1	-3.1	-1.3	-0.4	-0.9	-1.3	-2.3	-2.1	-1.8	1.8	1.7	0.3	-0.1	-0.7
Cyprus	-4.2	-2.6	-0.9	0.5	0.3	-1.5	-2.5	-1.1	1.1	0.2	-0.7	-2.8	-7.0	-4.7	0.5	-0.7	1.2	2.0	1.5
Luxembourg	-7.2	-6.9	-7.5	-8.5	-8.3	-10.2	-9.4	-8.0	-6.3	-4.8	-6.1	-6.8	-9.0	-7.9	-5.0	-5.1	-5.5	-5.0	-5.0
Malta	0.4	5.2	3.3	5.1	2.9	2.5	2.3	1.4	1.3	2.2	1.2	1.0	-0.5	1.9	1.2	1.6	0.9	1.4	0.6
Netherlands	0.1	-1.5	-2.2	-2.5	-4.0	-5.0	-3.9	-2.2	-1.3	-2.0	-3.1	-3.6	-3.8	-4.1	0.5	0.3	0.2	0.0	-1.1
Austria	1.2	-0.8	-2.3	-2.1	-1.6	-1.6	-3.4	-2.5	-1.8	-2.3	-1.4	-1.4	-2.7	-2.7	0.3	0.2	-1.3	-1.7	-1.8
Portugal	1.2	0.3	-0.9	-0.9	-1.8	-0.9	0.2	0.0	0.9	1.9	2.5	1.2	0.2	0.7	5.7	5.2	4.1	4.0	2.8
Slovenia	-4.2	-3.9	-2.3	-3.0	-2.7	-1.4	-1.2	-2.2	-2.3	-2.7	-3.0	-3.4	-5.0	-3.9	0.3	0.4	0.7	-0.5	0.1
Slovakia	-5.4	-1.4	-1.9	-1.9	-1.8	-0.7	0.4	0.9	-1.0	-1.0	-1.9	-0.5	-1.3	-1.5	3.2	4.0	0.9	1.5	0.2
Finland	-0.5	-2.0	-3.2	-5.8	-6.0	-10.4	-8.5	-7.7	-6.1	-6.0	-6.2	-7.1	-8.5	-7.6	-1.5	-1.0	-2.8	-1.8	-1.6
Euro area	0.4	0.2	-0.7	-1.5	-2.5	-2.7	-2.1	-1.2	-0.6	-1.0	-1.4	-2.5	-3.2	-2.0	1.7	1.3	0.3	-0.4	-0.6
Euro area excluding Italy	-0.1	-0.3	-0.9	-1.7	-2.6	-3.0	-2.4	-1.4	-0.8	-1.2	-1.7	-2.6	-3.3	-2.2	1.8	1.5	0.3	-0.3	-0.7
Bulgaria	6.5	9.6	-2.1	-5.4	-4.5	-3.6	-5.1	-3.0	-3.2	-5.5	-4.9	-5.6	-7.9	-6.3	0.1	-0.4	-0.5	-1.9	-1.0
Czech Republic	-5.9	-4.8	-4.5	-4.3	-3.6	-3.0	-3.1	-2.5	-2.4	-4.3	-4.1	-3.9	-4.7	-3.6	0.3	-0.1	-1.2	-1.9	-2.1
Denmark	0.3	-0.8	-1.9	-2.6	-3.8	-4.8	-3.8	-2.7	-2.5	-4.6	-7.4	-7.7	-7.9	-6.6	-0.5	-0.8	-1.7	-1.6	-2.9
Croatia	-4.3	-2.0	-3.6	-3.0	-3.8	-3.7	-4.8	-4.3	-0.4	0.3	1.6	1.6	0.8
Latvia	-1.4	-2.8	-2.5	-2.7	-0.3	-1.2	-2.7	-2.5	-2.4	-4.4	-3.5	-5.4	-5.5	-1.3	2.8	0.1	-2.6	-4.5	-3.9
Lithuania	-2.2	-2.6	-3.2	-3.9	-1.6	5.9	4.1	2.3	1.1	-0.1
Hungary	2.4	-0.1	0.1	-0.2	0.0	-2.8	-2.2	0.2	1.8	1.8	2.9	3.3	-0.2	-0.2	1.3	1.4	1.4	-0.9	-0.6
Poland	2.6	0.3	0.0	0.7
Romania	-2.3	-0.9	1.2	0.4	1.3	0.3	-0.5	-2.6	-3.3	-3.7	-2.8	-4.4	-3.7	-1.5	2.8	0.7	-1.8	-2.0	-2.8
Sweden	1.5	-1.7	-3.2	-4.4	-5.2	-7.1	-5.5	-2.9	-2.9	-4.3	-5.9	-6.3	-7.4	-6.2	-3.8	-4.5	-4.4	-3.5	-3.0
United Kingdom	2.2	1.3	-0.1	-2.0	-3.0	-3.3	-3.0	-0.6	0.5	0.6	0.5	-0.3	-0.1	1.0	5.7	5.5	4.1	4.5	2.8
EU excluding euro area	1.6	0.4	-0.8	-2.4	-3.2	-3.8	-3.3	-1.1	-0.4	-0.7	-1.1	-1.8	-2.0	-1.1	3.3	2.9	1.5	1.8	0.8
EU	0.6	0.3	-0.8	-1.7	-2.7	-3.0	-2.4	-1.2	-0.6	-0.9	-1.3	-2.3	-2.9	-1.8	2.0	1.7	0.6	0.2	-0.2
EU excluding Italy	0.3	-0.2	-0.9	-1.9	-2.8	-3.2	-2.6	-1.3	-0.7	-1.1	-1.5	-2.4	-2.9	-1.9	2.2	1.9	0.7	0.3	-0.3
United States	0.6	-0.5	-1.7	-2.8	-3.3	-4.1	-2.1	1.1	2.1	1.7	0.3	-0.6	-0.3	2.7	7.6	7.5	6.4	5.2	2.3
Japan	-2.9	-3.0	-3.1	-1.5	-0.1	0.0	-0.3	1.8	2.2	2.4	1.1	-0.4	-0.6	0.1	5.8	5.4	5.3	4.9
Canada	1.8	-0.4	-2.9	-2.9	-4.4	-5.7	-3.7	-3.1	-3.2	-4.4	-5.3	-5.5	-5.3	-3.7	-0.2	0.0	-0.7	-1.1	-1.3

Capital account balance*(as a percentage of GDP)*

	1995	1996	1997	1998	1999	2000	2001	2002	2003	2004	2005	2006	2007	2008	2009	2010	2011	2012	2013
Italy	4.1	3.8	3.0	3.5	3.9	2.7	4.4	3.8	3.1	3.7	4.2	5.2	4.2	4.1	4.2	3.8	3.1	3.6	3.0
Belgium	2.9	2.8	3.1	3.0	3.0	3.1	2.6	2.3	2.9	2.1	4.6	2.1	2.5	2.6	3.1	2.8	3.3	3.8	2.9
Germany	9.8	3.3	3.1	3.2	3.2	0.9	3.5	3.4	3.3	3.0	2.9	2.8	2.6	3.1	3.2	4.1	3.0	2.8	2.7
Estonia	2.9	3.0	5.2	4.8
Ireland	2.1	2.0	1.8	2.1	4.1	3.1	4.1	3.7	3.2	3.3	3.2	3.1	4.1	5.8	6.7	25.5	6.7	2.6	1.6
Greece	3.0	3.4	4.8	5.3	2.8	1.8	4.4	12.1
Spain	5.8	4.8	4.7	4.6	4.4	4.5	4.6	4.7	4.6	4.9	4.7	4.9	5.3	5.7	6.4	5.7	4.9	6.6	2.7
France	5.6	4.9	4.7	4.5	4.7	4.4	4.5	4.4	4.2	4.4	4.4	4.6	4.7	4.9	5.4	5.1	4.8	4.9	4.9
Cyprus	5.0	5.6	5.6	3.3	3.7	3.7	4.6	5.2	4.9	3.6	2.9	3.9	3.8	3.8	5.1	5.5	4.6	3.8	3.4
Luxembourg	4.7	5.6	3.9	5.0	4.8	4.5	3.4	5.7	5.8	5.8	6.0	5.4	4.8	4.6	5.5	5.8	5.1	4.9	4.3
Malta	3.0	2.5	3.8	4.2	3.8	3.0	3.8	4.0	7.8	2.2	1.5	1.6	2.8	2.3	2.1	1.7	1.7	2.2	2.1
Netherlands	8.6	3.3	3.5	3.4	3.7	3.1	4.3	4.3	4.4	3.7	3.4	3.4	3.6	3.9	5.0	4.7	4.1	4.0	3.4
Austria	5.0	5.2	4.6	4.9	4.2	3.6	4.0	3.8	3.6	7.1	3.9	3.9	4.0	4.2	5.0	4.3	3.9	4.0	3.3
Portugal	3.9	4.4	4.6	5.3	4.8	4.1	4.6	3.4	3.5	4.3	3.6	3.1	2.9	3.0	4.1	5.9	3.2	1.5	2.1
Slovenia	12.4	5.0	4.6	5.3	5.7	5.0	5.1	4.6	4.9	4.9	4.5	4.7	5.1	5.8	5.8	5.3	5.6	4.2	14.4
Slovakia	8.7	11.1	8.1	7.1	9.1	12.8	6.1	7.2	3.7	3.3	4.8	4.1	3.2	3.9	4.8	3.5	3.2	2.7	2.4
Finland	6.4	5.3	4.4	4.1	4.3	3.5	3.5	3.7	3.7	3.8	3.6	3.2	3.4	3.4	4.0	3.7	3.8	3.9	4.0
<i>Euro area</i>	6.9	4.0	3.7	3.8	3.9	2.9	4.1	3.9	3.7	3.8	3.9	3.9	3.8	4.1	4.6	4.8	3.8	4.0	3.5
<i>Euro area excluding Italy</i>	7.4	4.0	3.8	3.9	3.9	2.9	4.0	3.9	3.8	3.9	3.8	3.7	3.8	4.1	4.6	5.0	3.9	4.1	3.6
Bulgaria	0.8	0.5	1.5	4.3	4.4	4.2	4.0	4.2	3.6	3.7	3.8	3.7	6.8	4.7	4.1	3.7	2.6	2.4	2.2
Czech Republic	18.4	7.9	8.0	9.0	7.0	6.4	8.4	8.8	8.8	7.0	7.2	6.1	5.4	5.7	5.3	4.5	4.1	5.9	3.4
Denmark	3.3	3.3	3.1	2.9	2.9	2.9	2.7	2.7	2.6	2.6	2.5	2.7	2.9	3.4	3.3	3.5	3.8	5.5	3.7
Croatia	6.4	6.5	8.2	8.1	7.6	7.1	7.3	7.0	6.3	5.8	6.0	4.0	4.4
Latvia	2.8	3.2	1.1	2.7	4.0	4.0	4.7	4.8	4.0	5.4	3.9	6.0	6.1	5.4	6.0	8.1	6.0	5.3	4.8
Lithuania	3.7	3.1	3.6	4.9	4.8	3.4	2.8	6.7	2.1	2.7
Hungary	6.3	4.5	5.5	7.7	5.2	5.9	6.3	8.7	5.4	4.6	5.0	6.1	5.3	3.8	3.3	3.2	4.1	3.2	3.0
Poland	5.0	4.6	3.7	3.3
Romania	4.3	4.5	3.2	2.8	3.1	4.3	4.0	4.6	4.8	4.9	3.9	6.6	6.6	7.1	6.1	5.9	7.3	5.0	5.0
Sweden	5.5	4.8	4.7	3.6	4.4	3.8	4.1	4.4	4.2	4.0	4.1	4.1	4.1	4.2	4.5	4.5	4.5	4.4	4.3
United Kingdom	3.4	2.7	2.3	2.2	2.3	2.1	2.5	2.6	2.9	3.0	3.0	3.2	3.0	4.1	5.2	4.1	3.5	3.8	3.0
<i>EU excluding euro area</i>	4.2	3.3	2.9	2.8	2.8	2.7	3.1	3.3	3.4	3.4	3.4	3.6	3.6	4.3	4.9	4.3	4.0	4.1	3.4
<i>EU</i>	6.4	3.8	3.5	3.6	3.6	2.8	3.8	3.7	3.6	3.7	3.8	3.8	3.8	4.2	4.6	4.7	3.9	4.0	3.5
<i>EU excluding Italy</i>	6.7	3.8	3.6	3.6	3.6	2.8	3.7	3.7	3.7	3.7	3.7	3.6	3.7	4.2	4.7	4.8	4.0	4.1	3.5
United States	3.5	3.5	3.3	3.2	3.3	3.3	3.4	3.7	3.8	3.8	3.8	3.6	3.9	4.4	5.1	4.5	4.2	3.7	3.3
Japan	7.5	7.9	6.8	11.9	7.2	7.5	6.3	5.9	5.5	3.5	3.7	1.7	2.7	1.8	3.1	2.9	3.5	3.8
Canada	3.4	3.1	2.6	2.6	2.6	2.8	3.0	3.1	3.2	3.4	3.6	3.7	3.8	4.0	4.8	4.9	4.4	4.4	4.3

Gross public debt*(as a percentage of GDP)*

	1995	1996	1997	1998	1999	2000	2001	2002	2003	2004	2005	2006	2007	2008	2009	2010	2011	2012	2013
Italy	116.9	116.3	113.7	110.8	109.6	105.1	104.7	101.9	100.4	100.0	101.9	102.5	99.7	102.3	112.5	115.3	116.4	122.2	127.9
Belgium	131.1	128.5	123.8	118.8	114.7	109.1	107.8	104.9	101.3	96.6	94.8	90.8	86.9	92.2	99.3	99.6	102.1	104.0	104.5
Germany	54.6	57.4	58.6	59.3	59.9	58.7	57.5	59.2	62.9	64.6	66.8	66.3	63.5	64.9	72.4	80.3	77.6	79.0	76.9
Estonia	6.5	6.0	9.7	10.1
Ireland	78.7	70.0	61.7	51.6	46.7	36.3	33.4	30.7	30.1	28.3	26.2	23.8	24.0	42.6	62.2	87.4	111.1	121.7	123.3
Greece	103.4	103.1	109.3	126.8	146.0	171.3	156.9	174.9
Spain	61.7	65.6	64.4	62.5	60.9	58.0	54.2	51.3	47.6	45.3	42.3	38.9	35.5	39.4	52.7	60.1	69.2	84.4	92.1
France	55.5	59.4	60.8	60.8	60.0	58.4	57.9	59.8	63.9	65.5	67.0	64.2	64.2	67.8	78.8	81.5	85.0	89.2	92.2
Cyprus	47.9	49.2	53.3	54.9	55.1	55.2	56.9	60.1	63.6	64.7	63.4	59.3	54.1	45.3	54.1	56.5	66.0	79.5	102.2
Luxembourg	7.7	7.6	7.5	7.2	6.4	6.1	6.6	6.5	6.4	6.5	6.3	7.0	7.2	14.4	15.5	19.6	18.5	21.4	23.6
Malta	34.4	38.7	46.6	51.2	62.1	60.9	65.5	63.2	69.1	72.0	70.1	64.6	62.4	62.7	67.8	67.6	69.8	67.9	69.8
Netherlands	73.5	71.8	66.0	62.7	58.5	51.3	48.8	48.3	49.4	50.0	49.4	44.9	42.7	54.8	56.5	59.0	61.3	66.5	68.6
Austria	68.0	68.0	63.2	63.6	66.4	65.9	66.5	66.3	65.5	64.8	68.3	67.0	64.8	68.5	79.7	82.4	82.1	81.7	81.2
Portugal	58.3	59.5	55.2	51.8	51.0	50.3	53.4	56.2	58.7	62.0	67.4	69.2	68.4	71.7	83.6	96.2	111.1	124.8	128.0
Slovenia	18.3	21.6	22.1	22.8	23.7	25.9	26.1	27.3	26.7	26.8	26.3	26.0	22.7	21.6	34.5	37.9	46.2	53.4	70.4
Slovakia	21.7	30.5	33.0	33.9	47.1	49.6	48.3	42.8	41.5	40.6	33.8	30.7	29.8	28.2	36.0	41.1	43.5	52.1	54.6
Finland	55.1	55.3	52.2	46.9	44.1	42.5	41.0	40.2	42.8	42.7	40.0	38.2	34.0	32.7	41.7	47.1	48.5	53.0	56.0
<i>Euro area</i>	69.8	72.6	72.2	71.0	70.1	67.4	66.3	66.2	67.5	67.8	68.5	67.6	65.3	68.9	78.6	83.8	85.9	89.1	91.1
<i>Euro area excluding Italy</i>	60.9	63.2	62.9	62.2	61.5	59.2	57.8	58.2	60.1	60.6	61.1	60.2	58.1	62.0	71.6	77.4	79.9	83.0	84.4
Bulgaria	97.3	69.3	75.2	70.1	64.0	51.2	43.5	36.1	27.1	21.3	16.6	13.3	14.2	15.9	15.7	18.0	18.3
Czech Republic	13.6	11.6	12.1	13.9	15.2	17.0	22.8	25.9	28.1	28.5	28.0	27.9	27.8	28.7	34.1	38.2	41.0	45.5	45.7
Denmark	71.3	68.0	64.0	59.7	56.1	52.4	48.5	49.1	46.2	44.2	37.4	31.5	27.3	33.4	40.4	42.9	46.4	45.6	45.0
Croatia	35.1	35.1	36.4	38.3	38.6	36.1	34.4	36.0	44.5	52.8	59.9	64.5	75.7
Latvia	13.9	13.3	10.7	9.1	12.2	12.2	14.0	13.2	13.9	14.2	11.7	9.9	8.4	18.6	36.4	46.8	42.7	40.9	38.2
Lithuania	23.6	23.0	22.2	21.0	19.3	18.3	18.0	16.7	15.4	29.0	36.3	37.3	39.9	39.0
Hungary	84.5	71.6	62.2	60.1	60.0	55.2	51.9	55.1	57.8	58.8	60.8	65.0	65.9	71.9	78.2	80.9	81.0	78.5	77.3
Poland	53.6	54.8	54.4	55.7
Romania	6.6	10.6	14.9	16.7	21.6	22.4	25.7	24.8	21.3	18.6	15.7	12.3	12.7	13.2	23.2	29.9	34.2	37.3	37.9
Sweden	69.9	70.3	68.2	66.7	61.5	51.3	51.8	49.9	49.1	47.9	48.2	43.2	38.2	36.8	40.3	36.7	36.1	36.4	38.6
United Kingdom	48.3	47.9	46.9	44.2	41.9	39.1	36.2	35.9	37.3	40.2	41.5	42.5	43.6	51.6	65.9	76.4	81.9	85.8	87.2
<i>EU excluding euro area</i>	52.6	51.7	50.0	47.2	44.9	41.0	38.7	38.4	39.2	40.7	40.8	40.2	39.8	44.8	55.9	62.1	65.4	68.5	69.4
<i>EU</i>	66.4	68.2	67.1	65.4	64.1	60.7	59.3	59.1	60.5	60.9	61.4	60.6	58.7	63.1	73.5	78.2	80.6	83.5	85.2
<i>EU excluding Italy</i>	59.0	60.4	59.4	58.1	56.9	53.8	52.2	52.4	54.1	54.8	55.1	54.3	52.6	57.2	67.5	72.9	75.6	78.5	79.7
United States	68.3	66.3	61.7	57.7	52.3	48.1	50.7	57.4	58.8	66.7	66.8	63.9	64.3	78.1	92.5	101.8	107.7	110.5	109.2
Japan	88.2	95.1	101.7	113.8	127.9	136.1	144.4	153.5	158.3	166.3	169.5	166.8	162.4	171.1	188.7	193.3	209.5	216.5	224.2
Canada	103.9	109.4	103.1	101.6	92.2	84.2	85.7	84.8	80.3	76.5	75.8	74.9	70.4	74.7	87.4	89.5	93.1	95.5	92.9

Total revenue*(as a percentage of GDP)*

	1995	1996	1997	1998	1999	2000	2001	2002	2003	2004	2005	2006	2007	2008	2009	2010	2011	2012	2013
Italy	44.5	45.0	46.6	45.3	45.5	44.2	44.1	43.7	43.8	43.3	43.0	44.0	45.2	45.1	45.9	45.6	45.6	47.4	47.7
<i>Italy - Traditional account</i> ..	45.1	45.4	47.0	45.6	45.7	44.4	44.4	44.0	44.3	43.8	43.5	44.7	45.8	45.8	46.6	46.3	46.2	48.0	48.3
Belgium	47.5	48.3	48.8	49.3	49.1	48.6	48.9	49.1	48.4	48.2	48.3	47.9	47.6	48.3	47.7	48.4	49.3	50.7	51.5
Germany	45.3	45.4	45.2	45.2	46.1	45.7	43.8	43.4	43.7	42.6	42.8	43.0	43.1	43.5	44.4	43.1	43.7	44.3	44.5
Estonia	40.6	39.1	39.5	38.4
Ireland	38.8	38.8	37.9	36.7	36.4	35.9	33.6	32.9	33.6	34.6	35.1	36.9	36.2	35.0	33.7	33.6	33.5	34.2	34.8
Greece	38.7	40.1	40.6	38.7	41.0	43.6	45.2	47.0
Spain	37.3	37.6	37.7	38.1	38.6	38.1	37.9	38.2	37.9	38.6	39.5	40.5	40.9	36.7	34.8	36.2	36.0	37.0	37.5
France	49.1	50.4	50.3	49.9	50.5	49.8	49.8	49.2	48.9	49.0	49.7	50.2	49.7	49.8	49.6	49.6	50.8	51.8	53.0
Cyprus	30.1	29.8	29.1	30.1	30.1	32.2	33.2	32.8	34.6	35.1	37.3	37.9	41.2	39.6	36.9	37.7	37.0	36.3	36.5
Luxembourg	41.0	41.0	42.7	43.0	41.2	42.1	43.1	42.9	42.9	41.7	42.7	41.0	42.3	42.6	44.5	43.3	42.6	43.5	44.5
Malta	35.7	33.9	34.6	32.3	35.1	34.7	35.6	36.0	36.1	37.8	39.5	39.7	38.9	38.4	38.5	37.7	38.3	39.0	39.8
Netherlands	45.1	45.5	44.3	43.3	44.0	43.6	42.8	41.9	41.8	42.2	42.4	43.7	42.9	44.0	42.7	43.2	42.7	43.5	44.5
Austria	48.8	50.6	49.7	49.4	49.1	48.3	50.4	49.4	49.3	48.7	48.5	47.7	47.8	48.3	48.8	48.3	48.2	48.7	49.5
Portugal	37.4	38.4	38.7	38.3	39.5	39.4	39.3	40.4	40.9	39.9	40.5	40.9	41.5	41.6	40.4	40.6	42.6	43.0	45.2
Slovenia	43.9	42.9	41.9	42.7	42.8	42.5	43.1	43.4	43.2	43.1	43.4	42.9	42.1	42.1	42.3	43.6	43.6	44.4	45.2
Slovakia	44.8	43.4	42.1	40.1	40.4	39.7	37.9	36.7	36.9	35.2	36.4	34.9	34.1	34.0	35.9	34.5	36.4	36.0	38.4
Finland	55.1	56.3	54.9	54.0	52.6	54.9	52.3	52.6	51.8	51.5	51.9	52.3	51.9	52.4	52.2	52.1	53.3	54.2	55.4
<i>Euro area</i>	45.5	46.0	46.0	45.7	46.1	45.5	44.8	44.3	44.3	44.0	44.3	44.6	44.7	44.5	44.4	44.3	44.9	45.9	46.6
<i>Euro area excluding Italy</i> ..	45.6	46.2	45.9	45.7	46.2	45.8	44.9	44.5	44.4	44.1	44.5	44.7	44.6	44.3	44.1	44.1	44.7	45.6	46.4
Bulgaria	34.0	33.0	31.0	35.8	39.2	39.8	40.9	37.9	38.3	39.8	38.1	36.1	39.4	39.3	36.4	34.1	32.6	34.7	37.1
Czech Republic	39.4	37.8	38.0	37.1	37.6	36.9	37.2	38.0	42.1	39.4	38.7	38.5	39.3	38.1	38.1	38.6	39.6	39.8	40.7
Denmark	54.9	55.5	54.7	55.0	55.4	54.6	54.0	53.2	53.5	55.1	56.2	54.8	54.6	53.7	54.0	54.3	54.8	54.9	55.9
Croatia	43.3	43.3	42.2	41.6	41.3	41.6	42.2	41.6	41.2	40.8	40.6	41.3	41.8
Latvia	34.3	35.1	36.7	38.2	37.5	34.9	32.9	33.0	31.8	33.5	33.7	35.5	33.3	33.0	34.5	36.0	35.5	35.8	34.8
Lithuania	32.5	33.6	33.9	34.3	34.8	35.6	35.4	33.5	33.0	32.8
Hungary	46.8	46.7	44.1	43.4	43.6	44.2	43.3	42.2	42.1	42.5	42.0	42.5	45.2	45.3	46.2	45.2	44.4	46.4	47.3
Poland	38.2	39.0	39.1	38.2
Romania	32.1	29.4	30.0	32.4	34.6	33.8	32.6	32.9	31.7	32.2	32.3	33.1	35.4	33.4	31.8	33.0	33.7	33.4	32.8
Sweden	56.5	58.3	57.7	58.1	57.4	56.8	54.5	52.8	53.1	53.1	54.5	53.5	53.0	52.3	52.4	52.0	51.4	51.7	51.9
United Kingdom	36.2	36.2	36.7	38.0	38.9	39.1	39.7	38.1	37.5	38.3	39.0	39.8	39.6	41.2	38.5	38.6	38.9	38.4	39.5
<i>EU excluding euro area</i> ..	41.3	41.5	41.0	41.9	42.6	42.4	42.3	40.9	40.8	41.3	41.8	42.1	42.1	42.9	41.3	41.2	41.4	41.2	41.9
<i>EU</i>	44.6	45.0	44.9	44.8	45.3	44.7	44.2	43.5	43.4	43.3	43.6	44.0	44.1	44.1	43.7	43.5	44.0	44.6	45.3
<i>EU excluding Italy</i>	44.6	45.1	44.6	44.7	45.2	44.8	44.2	43.4	43.4	43.3	43.7	44.0	43.9	43.9	43.4	43.2	43.8	44.2	45.0
United States	33.0	33.4	33.7	34.0	34.0	34.5	33.6	31.3	30.7	30.9	32.3	33.2	33.4	31.9	30.2	30.6	30.9	31.2	33.1
Japan	31.1	31.5	31.5	31.2	31.1	31.3	32.0	30.6	30.2	30.7	31.6	34.7	33.7	35.1	33.1	32.4	33.1	33.2
Canada	42.5	43.1	43.8	43.7	43.6	43.4	41.9	40.4	40.3	40.0	40.1	40.4	40.1	38.9	39.1	38.3	38.0	37.9	37.8

Current revenue

(as a percentage of GDP)

Paesi	1995	1996	1997	1998	1999	2000	2001	2002	2003	2004	2005	2006	2007	2008	2009	2010	2011	2012	2013
Italy	43.7	44.6	45.7	44.6	45.1	43.8	43.9	43.3	42.2	42.4	42.5	43.7	45.0	44.9	44.9	45.2	45.0	47.0	47.1
<i>Italy - Traditional account</i>	44.3	45.0	46.0	44.9	45.3	44.0	44.1	43.6	42.7	42.9	43.1	44.4	45.6	45.5	45.6	45.9	45.5	47.6	47.7
Belgium	47.1	47.9	48.2	48.8	48.5	48.1	48.4	48.5	47.8	47.4	47.5	47.2	46.9	47.6	47.0	47.6	48.5	49.7	50.4
Germany	44.8	45.0	44.8	44.8	45.6	45.3	43.5	43.0	43.3	42.2	42.4	42.7	42.7	43.1	44.0	42.7	43.3	43.9	44.1
Estonia	39.2	37.6	37.6	36.9
Ireland	37.0	37.2	36.1	35.2	34.8	34.5	32.5	31.7	32.3	33.5	33.9	35.5	34.7	33.8	33.1	33.3	33.0	33.9	34.5
Greece	36.3	37.6	38.4	37.4	38.9	41.2	42.6	43.5
Spain	36.6	37.0	37.2	37.4	37.8	37.5	37.3	37.4	37.1	37.8	38.7	39.8	40.4	36.5	34.8	36.2	36.1	36.8	37.1
France	48.8	50.1	50.0	49.7	50.2	49.5	49.5	48.8	48.4	48.5	49.2	49.8	49.4	49.6	49.4	49.4	50.6	51.5	52.7
Cyprus	30.0	29.8	29.1	30.1	30.0	32.1	33.2	32.8	34.6	34.4	36.4	37.8	41.1	39.5	36.8	37.6	36.9	36.2	36.4
Luxembourg	40.7	40.8	42.5	42.7	41.0	41.9	42.9	42.6	42.6	41.5	42.4	40.8	42.1	42.4	44.2	43.1	42.5	43.3	44.2
Malta	35.0	31.9	33.6	31.4	33.8	33.3	35.2	35.7	35.8	36.2	36.4	36.7	37.8	37.7	37.6	36.1	36.6	37.0	37.9
Netherlands	44.8	45.0	44.0	43.0	43.6	43.2	42.5	41.5	41.4	41.8	42.1	43.3	42.6	43.7	42.4	42.8	42.4	43.2	44.2
Austria	48.5	50.4	49.6	49.2	48.9	48.1	50.2	49.1	49.1	48.5	48.2	47.5	47.5	48.1	48.2	48.2	48.0	48.5	49.1
Portugal	36.2	37.1	37.1	37.1	38.4	38.5	37.9	38.8	39.2	38.7	39.2	40.1	40.7	40.8	39.6	39.4	41.5	41.2	44.2
Slovenia	43.8	42.7	41.7	42.4	42.6	42.3	42.8	43.2	43.1	43.0	43.3	42.7	41.7	42.1	42.2	43.5	43.5	44.2	44.8
Slovakia	44.8	43.2	42.0	40.1	40.3	39.6	37.8	36.6	36.8	35.0	36.2	34.6	33.7	33.8	35.1	33.6	35.3	35.1	37.2
Finland	54.9	56.0	54.6	53.7	52.3	54.5	52.0	52.2	51.4	51.1	51.5	51.9	51.6	52.0	51.9	51.8	53.0	53.9	55.0
<i>Euro area</i>	45.0	45.6	45.5	45.2	45.6	45.1	44.4	43.9	43.6	43.4	43.7	44.1	44.3	44.1	44.0	44.0	44.5	45.5	46.1
<i>Euro area excluding Italy</i> .	45.2	45.8	45.5	45.3	45.8	45.3	44.5	44.0	43.9	43.6	44.0	44.2	44.1	43.9	43.8	43.7	44.4	45.2	45.9
Bulgaria	33.8	32.8	30.9	35.7	39.1	39.6	40.8	37.8	38.2	39.6	37.8	35.7	37.9	38.3	35.1	32.7	31.4	33.0	34.8
Czech Republic	38.9	37.6	37.9	37.0	37.5	36.7	36.9	37.9	38.8	39.1	38.4	38.0	38.5	37.3	36.7	37.1	38.3	38.8	39.7
Denmark	54.8	55.5	54.6	54.9	55.3	54.4	53.8	53.0	53.3	54.8	56.0	54.7	54.5	53.5	53.9	54.2	54.4	54.8	55.8
Croatia	43.3	43.3	42.2	41.6	41.3	41.5	42.1	41.6	41.1	40.7	40.3	40.5	41.6
Latvia	34.2	34.8	35.3	37.0	36.8	34.5	33.6	33.7	32.7	34.4	33.3	35.1	33.0	33.3	35.3	37.3	35.7	36.0	35.2
Lithuania	32.1	32.8	32.9	32.8	33.8	34.1	32.9	31.4	31.0	30.9
Hungary	46.5	46.2	43.7	43.0	43.2	43.8	42.8	41.7	41.7	42.1	41.4	41.6	44.3	44.6	44.9	43.3	42.2	44.3	44.7
Poland	37.0	37.3	37.8	37.2
Romania	31.8	29.4	30.0	32.4	34.6	33.7	32.5	32.8	31.7	31.8	31.9	33.0	34.1	32.6	31.5	32.3	33.1	32.5	32.2
Sweden	56.3	58.1	57.5	57.9	57.1	56.6	54.3	52.5	52.9	52.9	54.3	53.4	52.9	52.2	52.3	51.9	51.3	51.3	51.6
United Kingdom	36.0	35.9	36.5	37.8	38.7	38.9	39.4	37.8	37.2	38.0	38.6	39.4	39.2	39.4	38.1	38.4	38.7	38.2	39.2
<i>EU excluding euro area</i> . .	41.0	41.2	40.8	41.7	42.3	42.2	42.1	40.6	40.4	41.0	41.5	41.8	41.7	41.7	40.9	40.7	40.9	40.7	41.4
<i>EU</i>	44.2	44.7	44.4	44.4	44.9	44.3	43.8	43.1	42.8	42.8	43.2	43.5	43.6	43.5	43.3	43.1	43.5	44.2	44.8
<i>EU excluding Italy</i>	44.2	44.7	44.2	44.3	44.8	44.4	43.8	43.0	42.9	42.8	43.3	43.5	43.4	43.3	43.0	42.8	43.3	43.8	44.5
United States	32.7	33.2	33.4	33.7	33.6	34.1	33.2	31.0	30.4	30.6	32.0	32.9	33.1	31.7	30.1	30.4	30.8	31.0	33.0
Japan	30.4	31.9	32.3	32.7	30.8	30.8	32.0
Canada	41.6	40.1	40.0

Tax revenue and social security contributions

(as a percentage of GDP)

	1995	1996	1997	1998	1999	2000	2001	2002	2003	2004	2005	2006	2007	2008	2009	2010	2011	2012	2013
Italy	40.3	40.7	42.3	41.1	41.2	40.0	40.1	39.7	40.0	39.3	39.1	40.2	41.5	41.3	41.8	41.6	41.6	43.2	43.3
Belgium	44.4	45.0	45.5	46.1	45.9	45.5	45.5	45.7	45.1	45.1	44.9	44.6	44.4	44.9	44.3	44.6	45.3	46.4	47.2
Germany	40.2	40.7	40.6	40.8	41.7	41.4	39.5	39.0	39.4	38.5	38.4	38.7	38.7	39.0	39.5	38.1	38.6	39.2	39.4
Estonia	33.2	31.9	32.1	31.9
Ireland	33.3	33.6	32.9	32.2	32.2	31.9	29.9	29.2	29.8	30.9	31.3	32.7	32.0	30.4	29.2	28.8	28.6	29.4	30.2
Greece	32.5	33.3	33.6	32.8	33.9	35.8	37.3	37.0
Spain	32.6	33.1	33.5	33.9	34.3	34.4	34.0	34.4	34.3	35.1	36.2	37.0	37.4	33.3	31.3	32.7	32.6	33.3	33.7
France	43.5	44.8	45.0	44.8	45.5	44.7	44.6	43.9	43.8	43.9	44.5	44.9	44.5	44.4	44.1	44.2	45.4	46.5	47.6
Cyprus	24.9	24.5	24.0	25.6	25.9	27.7	28.5	28.5	29.4	30.1	31.9	32.6	36.6	35.3	32.3	32.6	32.5	31.8	31.6
Luxembourg	36.2	36.6	38.2	38.3	37.2	38.0	39.0	38.9	39.1	38.0	39.1	37.2	38.2	38.1	40.2	39.1	38.6	39.5	40.4
Malta	27.6	25.6	27.8	25.7	27.9	28.3	30.0	30.8	30.7	31.2	32.7	33.1	33.9	33.2	33.6	32.3	32.9	33.2	34.1
Netherlands	38.3	38.6	38.0	37.4	38.3	37.7	36.6	36.1	35.8	35.9	36.2	37.0	36.5	36.8	35.6	36.3	36.1	36.5	37.3
Austria	42.5	43.9	44.6	44.6	44.3	43.4	45.0	43.8	43.6	43.0	42.0	41.3	41.4	42.2	41.8	41.7	41.8	42.4	43.3
Portugal	31.3	32.1	32.1	32.5	33.1	33.5	33.2	33.9	34.2	33.3	34.1	34.7	34.9	34.8	33.4	33.6	35.4	34.4	37.0
Slovenia	38.6	37.5	36.4	37.1	37.5	36.9	37.1	37.4	37.6	37.7	38.2	37.9	37.2	36.7	36.6	37.1	36.7	37.0	37.2
Slovakia	39.6	38.7	36.5	36.1	34.9	33.7	32.8	32.7	32.4	31.3	31.0	29.1	29.0	28.8	28.7	28.0	28.6	28.3	30.2
Finland	44.9	46.1	45.3	45.1	44.5	45.9	43.2	43.4	42.5	41.9	42.2	42.2	41.5	41.2	41.0	40.8	42.1	42.9	44.0
Euro area	40.3	40.9	41.2	41.0	41.4	40.9	40.1	39.7	39.7	39.4	39.6	39.9	40.0	39.6	39.3	39.2	39.7	40.7	41.2
Euro area excluding Italy	40.3	40.9	40.9	40.9	41.5	41.1	40.1	39.7	39.7	39.5	39.7	39.8	39.7	39.3	38.8	38.8	39.4	40.2	40.8
Bulgaria	28.2	28.0	25.6	28.2	30.1	30.5	29.8	27.9	30.4	31.7	30.8	30.3	32.0	31.1	27.9	26.9	26.0	27.1	28.0
Czech Republic	34.5	33.2	33.5	32.3	33.1	32.5	32.4	33.4	34.1	34.5	34.0	33.7	34.2	32.9	32.0	32.4	33.5	34.0	34.7
Denmark	48.2	48.4	48.3	48.8	49.4	48.5	47.5	47.0	47.2	47.9	49.4	47.8	47.7	46.0	46.5	46.6	46.6	47.4	48.8
Croatia	38.3	37.6	37.1	36.4	36.2	36.8	37.1	36.7	36.4	36.1	35.2	35.9	36.3
Latvia	30.7	29.9	31.3	32.3	31.7	30.2	29.6	29.1	28.5	28.8	28.5	29.3	28.6	29.0	29.1	30.4	29.4	30.1	30.0
Lithuania	28.9	29.0	29.9	29.8	30.3	30.2	28.4	27.2	27.0	27.1
Hungary	40.5	39.5	37.9	37.8	38.5	39.3	38.2	37.5	37.6	37.2	36.8	36.7	39.6	39.6	39.2	37.6	36.9	38.6	38.4
Poland	32.2	32.8	33.0	32.7
Romania	27.6	25.9	26.4	29.1	31.2	30.4	28.8	28.4	27.9	27.7	28.3	29.0	29.5	28.1	27.1	27.0	28.0	27.9	27.2
Sweden	46.4	48.7	48.9	49.4	49.7	49.5	47.4	45.8	46.2	46.3	47.3	46.6	45.7	44.7	44.9	44.9	44.2	44.3	44.6
United Kingdom	33.4	33.2	33.9	35.2	36.0	36.2	36.3	35.0	34.5	35.0	35.4	36.1	35.8	37.2	34.4	34.9	35.5	35.0	35.0
EU excluding euro area	36.8	36.9	37.0	37.9	38.6	38.6	38.2	37.0	36.8	37.1	37.5	37.7	37.4	38.0	36.2	36.1	36.4	36.3	36.5
EU	39.6	40.1	40.2	40.2	40.8	40.3	39.6	39.0	39.0	38.8	39.0	39.3	39.3	39.2	38.6	38.4	38.9	39.5	40.0
EU excluding Italy	39.5	39.9	39.9	40.1	40.7	40.4	39.5	38.9	38.8	38.8	39.0	39.2	39.0	38.9	38.2	38.0	38.5	39.0	39.5
United States	27.0	27.4	27.8	28.3	28.3	28.7	27.7	25.4	24.9	25.1	26.4	27.2	27.3	25.8	23.8	24.2	24.5	25.1	26.4
Japan	27.0	27.4	27.5	27.1	26.9	27.4	28.2	27.0	26.8	26.3	27.5	28.9	29.3	29.9	27.9	28.2	29.4	30.0
Canada	34.0	32.8	32.5

Tax revenue and social security contributions, excluding capital taxes

(as a percentage of GDP)

	1995	1996	1997	1998	1999	2000	2001	2002	2003	2004	2005	2006	2007	2008	2009	2010	2011	2012	2013
Italy	39.7	40.5	41.7	40.7	41.1	39.9	40.0	39.5	38.7	38.7	38.9	40.2	41.5	41.3	41.0	41.4	41.1	43.1	43.0
Belgium	44.0	44.6	45.1	45.7	45.5	45.0	45.0	45.2	44.6	44.4	44.3	44.0	43.8	44.2	43.6	43.9	44.6	45.6	46.2
Germany	40.1	40.5	40.5	40.7	41.5	41.3	39.3	38.9	39.2	38.3	38.2	38.5	38.5	38.8	39.3	38.0	38.4	39.1	39.3
Estonia	33.2	31.9	32.1	31.9
Ireland	33.2	33.5	32.8	32.0	32.0	31.7	29.8	29.0	29.7	30.8	31.2	32.6	31.8	30.2	29.1	28.7	28.5	29.2	30.0
Greece	32.3	33.2	33.4	32.5	33.8	35.7	37.2	36.9
Spain	32.2	32.8	33.1	33.5	33.9	34.0	33.7	34.0	33.9	34.7	35.7	36.5	36.9	32.9	30.9	32.4	32.2	32.9	33.2
France	43.2	44.4	44.5	44.4	45.1	44.3	44.1	43.4	43.3	43.4	44.0	44.5	44.0	44.0	43.7	43.8	44.9	46.0	47.1
Cyprus	24.8	24.4	23.9	25.5	25.8	27.7	28.5	28.5	29.3	29.4	31.1	32.6	36.6	35.3	32.3	32.6	32.5	31.8	31.6
Luxembourg	36.1	36.5	38.1	38.2	37.1	37.9	38.9	38.7	38.9	37.9	38.9	37.0	38.1	38.0	40.1	39.0	38.5	39.3	40.3
Malta	27.5	25.5	27.6	25.6	27.8	28.2	29.9	30.7	30.6	31.0	32.3	32.8	33.6	32.9	33.4	32.1	32.7	33.0	33.9
Netherlands	38.0	38.4	37.7	37.1	38.0	37.3	36.3	35.7	35.5	35.6	35.8	36.7	36.2	36.5	35.3	36.1	35.8	36.3	37.0
Austria	42.4	43.8	44.6	44.5	44.2	43.4	44.9	43.7	43.5	43.0	41.9	41.3	41.3	42.2	41.8	41.7	41.7	42.4	43.0
Portugal	31.2	32.0	32.0	32.4	33.1	33.4	33.1	33.8	34.2	33.3	34.1	34.7	34.9	34.8	33.4	33.5	35.4	34.2	37.0
Slovenia	38.5	37.4	36.3	36.9	37.3	36.8	37.0	37.3	37.6	37.6	38.2	37.8	37.1	36.7	36.6	37.1	36.6	37.0	37.1
Slovakia	39.6	38.7	36.5	36.1	34.9	33.7	32.7	32.6	32.3	31.3	31.0	29.1	29.0	28.8	28.7	28.0	28.6	28.3	30.2
Finland	44.7	45.9	45.1	44.9	44.2	45.6	43.0	43.1	42.2	41.6	41.9	41.9	41.3	40.9	40.7	40.6	41.9	42.6	43.7
Euro area	40.0	40.6	40.8	40.7	41.2	40.7	39.8	39.4	39.2	39.0	39.3	39.6	39.8	39.4	39.0	39.0	39.4	40.4	40.9
Euro area excluding Italy	40.1	40.7	40.7	40.7	41.2	40.8	39.8	39.4	39.4	39.1	39.4	39.5	39.4	39.0	38.6	38.5	39.1	39.9	40.5
Bulgaria	28.0	27.9	25.5	28.1	30.0	30.4	29.7	27.7	30.2	31.5	30.6	29.9	31.5	30.6	27.7	26.6	25.7	26.9	27.7
Czech Republic	34.5	33.2	33.5	32.3	33.1	32.5	32.4	33.3	34.1	34.5	34.0	33.7	34.2	32.9	32.0	32.4	33.5	34.0	34.7
Denmark	48.0	48.1	48.1	48.6	49.2	48.3	47.3	46.8	47.0	47.7	49.2	47.5	47.4	45.8	46.3	46.4	46.4	47.1	48.6
Croatia	38.3	37.6	37.1	36.4	36.2	36.8	37.1	36.7	36.4	36.1	35.2	35.9	36.3
Latvia	30.7	29.9	31.3	32.3	31.7	30.2	29.6	29.1	28.5	28.8	28.5	29.3	28.6	29.0	29.1	30.4	29.4	30.1	30.0
Lithuania	28.9	29.0	29.9	29.8	30.3	30.2	28.4	27.2	27.0	27.1
Hungary	40.4	39.5	37.9	37.8	38.4	39.2	38.1	37.5	37.5	37.1	36.7	36.6	39.5	39.6	39.2	37.5	36.9	38.5	38.3
Poland	32.2	32.7	33.0	32.7
Romania	27.6	25.9	26.4	29.1	31.2	30.4	28.8	28.4	27.9	27.7	28.3	29.0	29.5	28.1	27.1	27.0	28.0	27.9	27.2
Sweden	46.3	48.6	48.8	49.3	49.5	49.4	47.3	45.7	46.1	46.3	47.3	46.6	45.7	44.7	44.9	44.9	44.2	44.3	44.6
United Kingdom	33.2	33.0	33.7	35.0	35.8	36.0	36.1	34.8	34.3	34.8	35.2	35.8	35.5	35.5	34.1	34.7	35.3	34.8	34.7
EU excluding euro area	36.6	36.7	36.8	37.7	38.5	38.4	38.0	36.8	36.6	36.9	37.3	37.5	37.2	36.9	36.0	36.0	36.3	36.2	36.3
EU	39.3	39.8	39.9	40.0	40.5	40.1	39.4	38.7	38.6	38.5	38.8	39.1	39.1	38.8	38.3	38.2	38.6	39.3	39.7
EU excluding Italy	39.3	39.7	39.6	39.9	40.5	40.1	39.3	38.6	38.6	38.5	38.8	38.9	38.8	38.4	37.9	37.7	38.2	38.7	39.2
United States	26.8	27.2	27.5	27.9	28.0	28.3	27.3	25.1	24.6	24.8	26.2	27.0	27.1	25.6	23.6	24.1	24.4	24.9	26.2
Japan	26.5	26.9	27.0	26.7	26.6	27.0	27.9	26.6	26.5	26.1	27.2	28.6	29.0	29.6	27.7	27.9	29.1	29.6
Canada	34.5	35.1	35.7	35.6	35.6	35.1	33.8	32.8	32.5	32.5	32.4	32.6	32.4	30.9	31.6	30.7	30.4	30.6	30.4

Direct taxes

(as a percentage of GDP)

	1995	1996	1997	1998	1999	2000	2001	2002	2003	2004	2005	2006	2007	2008	2009	2010	2011	2012	2013
Italy	13.9	14.5	15.2	13.7	14.3	13.8	14.1	13.4	12.8	12.8	12.8	13.8	14.5	14.7	14.1	14.1	13.8	14.7	14.9
Belgium	16.0	16.0	16.4	16.9	16.5	16.6	16.8	16.7	16.2	16.2	16.3	16.1	15.9	16.1	14.9	15.2	15.7	16.1	16.7
Germany	11.7	11.6	11.3	11.7	12.2	12.4	10.9	10.5	10.5	10.2	10.5	11.3	11.7	12.0	11.2	10.6	11.1	11.6	11.9
Estonia	6.6	6.4	6.7	7.2
Ireland	13.6	14.0	14.0	13.8	14.0	13.8	12.9	12.3	12.7	13.2	13.1	13.9	13.5	12.5	12.2	12.1	12.4	13.1	13.3
Greece	8.2	8.3	8.2	8.5	8.2	9.1	10.6	10.3
Spain	9.7	10.0	9.9	9.8	9.8	10.0	9.8	10.3	9.8	10.2	10.8	11.6	12.7	10.4	9.4	9.3	9.5	10.1	10.0
France	7.8	8.4	8.9	11.0	11.6	11.6	11.9	11.1	10.8	10.9	11.1	11.7	11.6	11.7	10.5	11.0	11.6	12.3	12.7
Cyprus	8.1	7.9	8.1	9.1	10.0	10.3	10.4	10.4	8.8	7.4	8.5	9.8	12.6	11.8	10.3	10.1	10.8	10.1	10.6
Luxembourg	14.6	15.0	15.6	15.2	14.1	14.2	14.6	14.8	14.6	12.9	13.8	13.3	13.6	14.0	14.6	14.6	14.2	14.3	14.6
Malta	8.2	6.7	8.0	7.5	8.5	8.9	9.5	10.7	11.0	10.4	10.9	11.3	12.6	12.1	13.0	12.2	12.3	13.0	13.9
Netherlands	11.6	12.0	11.4	11.1	11.0	10.8	10.8	10.8	10.0	9.8	10.8	10.9	11.2	10.9	11.0	11.1	10.7	10.2	10.2
Austria	11.9	12.8	13.4	13.6	13.2	13.1	14.7	13.6	13.4	13.2	12.7	12.7	13.1	13.7	12.5	12.5	12.6	12.9	13.3
Portugal	8.1	8.7	8.8	8.5	9.0	9.4	9.0	8.9	8.2	8.1	8.0	8.3	9.2	9.3	8.6	8.5	9.5	8.9	11.3
Slovenia	6.7	7.2	7.2	7.1	7.1	7.2	7.3	7.6	7.8	8.0	8.5	9.0	9.0	8.7	8.1	8.0	7.8	7.5	7.2
Slovakia	10.6	9.5	9.0	8.8	8.9	7.3	7.4	6.9	7.0	6.4	6.3	6.4	6.4	6.8	5.9	5.7	5.8	5.9	6.4
Finland	16.8	18.4	17.9	18.3	17.8	20.5	18.3	18.2	17.1	17.0	16.9	16.8	17.0	16.8	15.5	15.4	15.9	15.7	16.4
Euro area	11.2	11.6	11.8	12.0	12.4	12.4	12.0	11.6	11.3	11.3	11.5	12.0	12.4	12.3	11.5	11.4	11.7	12.2	12.5
Euro area excluding Italy	10.7	10.9	11.0	11.7	12.0	12.1	11.6	11.2	10.9	10.9	11.2	11.7	12.0	11.8	10.9	10.9	11.2	11.7	12.0
Bulgaria	8.0	8.9	8.3	7.5	7.3	6.6	7.2	6.1	5.9	5.6	4.6	4.7	7.4	6.0	5.4	5.0	4.7	4.8	5.1
Czech Republic	8.9	7.7	8.2	7.7	7.8	7.6	7.9	8.4	8.8	8.7	8.4	8.4	8.6	7.6	6.9	6.6	6.8	6.8	7.0
Denmark	29.9	29.8	29.5	29.1	29.2	29.3	28.3	28.1	28.4	29.0	30.3	28.8	28.6	28.0	28.5	28.7	28.6	29.4	30.8
Croatia	7.8	6.0	5.9	5.9	6.1	6.8	7.3	7.1	7.1	6.4	6.2	6.1	6.3
Latvia	6.6	6.6	7.3	7.5	7.5	7.3	7.5	7.6	7.2	7.5	7.5	7.9	8.3	9.0	7.0	7.3	7.3	7.6	7.6
Lithuania	8.7	8.9	9.5	9.1	9.2	5.9	4.6	4.3	4.8	5.0
Hungary	8.5	9.0	8.7	8.7	9.2	9.6	9.9	9.9	9.4	8.8	8.8	9.2	10.1	10.4	9.7	7.9	6.3	6.8	6.7
Poland	6.7	6.8	7.0	6.8
Romania	10.6	9.8	10.3	8.3	7.7	7.2	6.3	5.7	5.9	6.4	5.3	6.0	6.7	6.6	6.4	6.0	6.1	6.0	5.9
Sweden	18.9	19.8	20.1	19.9	20.6	21.4	19.6	18.5	19.1	19.8	20.9	21.1	20.1	18.7	18.5	18.2	17.6	17.4	17.7
United Kingdom	14.0	13.7	14.2	15.4	15.5	15.7	16.0	14.9	14.3	14.5	15.2	15.9	15.7	15.9	14.8	14.6	14.7	14.1	14.0
EU excluding euro area	15.9	15.7	15.8	16.5	16.7	16.8	16.5	15.6	15.2	15.4	15.9	16.3	16.0	15.7	15.0	13.9	13.8	13.7	13.7
EU	12.2	12.4	12.7	13.1	13.4	13.5	13.2	12.6	12.3	12.3	12.7	13.1	13.3	13.1	12.3	12.1	12.2	12.6	12.8
EU excluding Italy	11.9	12.1	12.3	13.0	13.3	13.5	13.0	12.5	12.2	12.2	12.6	13.0	13.2	12.9	12.0	11.8	12.0	12.3	12.6
United States	12.5	13.1	13.6	14.0	14.1	14.5	13.5	11.3	10.8	11.0	12.3	13.1	13.3	11.8	9.7	10.4	11.4	12.0	12.6
Japan	9.6	9.7	9.7	8.5	8.2	8.7	9.2	7.9	7.5	7.5	8.3	9.1	9.5	9.6	7.7	7.8	8.1	8.3
Canada	15.8	16.7	17.3	17.4	17.7	17.9	16.5	15.2	14.9	15.3	15.5	16.0	16.1	15.4	15.2	14.5	14.5	14.6	14.5

Indirect taxes

(as a percentage of GDP)

	1995	1996	1997	1998	1999	2000	2001	2002	2003	2004	2005	2006	2007	2008	2009	2010	2011	2012	2013
Italy	11.7	11.6	12.0	14.8	14.6	14.4	14.1	14.1	13.7	13.7	13.9	14.5	14.4	13.6	13.4	13.9	14.1	15.1	14.8
Belgium	12.2	12.7	12.9	12.8	13.2	13.0	12.6	12.6	12.6	12.7	12.9	12.8	12.7	12.5	12.5	12.7	12.7	13.1	12.9
Germany	10.3	10.2	10.2	10.3	10.8	10.8	10.6	10.5	10.7	10.4	10.3	10.3	10.7	10.7	11.2	10.8	10.9	10.9	10.8
Estonia	13.7	13.6	13.9	13.4
Ireland	13.6	13.8	13.4	13.2	13.1	13.0	11.8	11.8	12.0	12.5	12.9	13.4	12.9	11.8	10.8	10.9	10.3	10.5	10.9
Greece	12.2	12.5	12.5	11.7	12.5	13.4	13.0	13.3
Spain	10.1	10.2	10.6	11.2	11.6	11.5	11.1	11.1	11.4	11.8	12.2	12.3	11.5	9.7	8.5	10.2	9.9	10.4	11.0
France	15.5	16.1	16.1	16.0	15.9	15.3	14.9	14.9	14.9	15.1	15.2	15.1	14.9	14.7	14.9	14.7	15.1	15.3	15.5
Cyprus	10.6	10.3	9.6	10.0	9.7	11.3	11.7	11.9	14.1	15.0	15.1	15.6	17.1	16.4	14.1	14.4	13.7	13.9	13.5
Luxembourg	11.2	11.2	12.0	12.4	12.6	13.2	13.0	12.5	12.6	13.3	13.6	12.8	13.3	12.5	12.8	12.4	12.3	12.7	13.3
Malta	12.1	11.4	11.9	10.9	12.0	12.0	12.5	12.3	12.2	13.3	14.1	14.2	14.1	13.8	13.3	12.9	13.3	12.9	13.0
Netherlands	10.6	10.9	11.0	11.0	11.5	11.3	11.8	11.6	11.6	11.8	11.9	12.0	11.8	11.5	11.0	11.3	10.8	10.7	11.1
Austria	14.5	14.9	15.1	15.0	15.1	14.7	14.7	14.8	14.7	14.5	14.2	13.8	13.7	13.9	14.3	14.2	14.3	14.5	14.4
Portugal	13.2	13.5	13.2	13.7	14.0	13.5	13.5	14.0	14.5	13.8	14.5	14.8	14.4	14.0	12.6	13.2	13.9	13.8	13.7
Slovenia	15.1	15.4	15.0	15.6	16.2	15.5	15.2	15.5	15.7	15.4	15.4	14.8	14.4	13.9	13.6	13.9	13.8	14.2	14.8
Slovakia	14.2	13.5	12.8	12.6	12.2	12.3	11.2	11.2	11.7	11.9	12.2	11.1	11.0	10.3	10.3	10.0	10.4	9.9	10.4
Finland	13.6	13.7	14.3	14.0	13.9	13.4	12.9	13.2	13.7	13.2	13.3	13.2	12.7	12.4	12.9	12.9	13.8	14.1	14.5
<i>Euro area</i>	12.1	12.2	12.3	12.9	13.1	12.9	12.6	12.6	12.7	12.7	12.8	12.9	12.8	12.3	12.3	12.4	12.6	12.8	12.9
<i>Euro area excluding Italy</i>	12.1	12.3	12.4	12.5	12.8	12.5	12.3	12.3	12.4	12.4	12.6	12.5	12.5	12.1	12.0	12.1	12.3	12.4	12.6
Bulgaria	11.1	10.9	9.6	12.3	12.9	13.3	13.0	12.3	14.2	15.9	16.4	17.0	16.3	17.1	14.8	14.7	14.1	15.1	15.1
Czech Republic	11.4	11.3	10.7	10.3	10.8	10.5	10.2	10.1	10.2	10.9	10.8	10.3	10.6	10.4	10.8	11.1	11.9	12.4	12.9
Denmark	16.3	16.7	16.9	17.9	17.8	16.7	16.8	17.0	16.9	17.1	17.4	17.3	17.4	16.5	16.4	16.3	16.4	16.5	16.7
Croatia	19.3	19.7	19.4	18.8	18.5	18.5	18.2	17.9	17.2	17.9	17.4	18.3	18.8
Latvia	13.1	12.9	13.8	14.5	13.6	12.8	12.8	12.2	12.7	12.9	12.9	13.1	12.2	11.6	12.6	14.3	13.3	13.7	13.9
Lithuania	11.1	11.1	11.2	11.5	11.4	11.4	11.9	11.6	11.2	11.1
Hungary	17.3	16.7	15.2	15.4	16.1	16.4	15.3	14.8	15.6	16.1	15.5	15.0	15.8	15.6	16.4	17.6	17.4	18.6	18.6
Poland	13.7	13.8	13.0	12.7
Romania	9.3	8.7	9.0	11.3	12.1	11.9	11.3	11.6	12.2	11.7	12.8	12.7	12.4	11.6	10.7	11.8	13.0	13.1	12.6
Sweden	21.5	22.4	21.9	24.3	24.1	22.7	22.8	23.0	22.8	22.3	22.5	22.0	22.0	22.3	22.6	22.2	21.9	22.2	22.2
United Kingdom	12.3	12.4	12.5	12.6	13.1	13.0	12.7	12.7	12.5	12.5	12.1	12.1	12.0	11.6	11.1	12.2	12.7	12.7	12.8
<i>EU excluding euro area</i>	14.0	14.2	14.1	14.5	14.8	14.5	14.2	14.2	14.2	14.1	13.8	13.7	13.7	13.5	13.2	14.0	14.3	14.4	14.4
<i>EU</i>	12.5	12.6	12.7	13.3	13.5	13.3	13.0	13.0	13.0	13.0	13.1	13.1	13.0	12.6	12.5	12.8	13.0	13.3	13.3
<i>EU excluding Italy</i>	12.6	12.8	12.8	13.0	13.3	13.1	12.9	12.9	12.9	12.9	12.9	12.9	12.8	12.4	12.3	12.7	12.9	13.0	13.1
United States	7.3	7.2	7.1	7.0	7.0	6.9	6.9	6.9	7.0	7.0	7.1	7.2	7.1	7.1	7.1	7.1	7.1	7.0	6.9
Japan	7.7	7.9	7.8	8.4	8.5	8.5	8.5	8.3	8.2	8.3	8.4	8.6	8.4	8.5	8.2	8.3	8.5	8.5
Canada	13.8	13.7	13.7	13.6	13.3	12.7	12.7	12.8	12.7	12.5	12.3	11.9	11.7	11.1	11.7	11.6	11.4	11.4	11.2

Social security contributions*(as a percentage of GDP)*

	1995	1996	1997	1998	1999	2000	2001	2002	2003	2004	2005	2006	2007	2008	2009	2010	2011	2012	2013
Italy	14.1	14.4	14.4	12.2	12.2	11.8	11.8	12.0	12.1	12.2	12.2	11.9	12.6	13.0	13.5	13.3	13.2	13.3	13.3
Belgium	15.9	16.0	15.8	15.9	15.8	15.4	15.6	15.9	15.8	15.4	15.2	15.1	15.2	15.6	16.3	15.9	16.1	16.4	16.6
Germany	18.1	18.7	19.0	18.7	18.5	18.1	17.8	17.9	18.1	17.7	17.4	16.9	16.1	16.1	16.9	16.5	16.4	16.5	16.6
Estonia	12.9	12.0	11.5	11.3
Ireland	6.0	5.7	5.3	5.0	4.9	4.9	5.0	5.0	5.0	5.2	5.2	5.2	5.4	5.9	6.1	5.8	5.8	5.6	5.9
Greece	11.9	12.4	12.7	12.4	13.1	13.1	13.6	13.3
Spain	12.4	12.5	12.6	12.5	12.6	12.6	12.7	12.7	12.7	12.7	12.6	12.6	12.6	12.7	12.9	12.8	12.8	12.5	12.2
France	19.8	19.9	19.5	17.4	17.6	17.4	17.3	17.4	17.7	17.5	17.6	17.7	17.5	17.6	18.3	18.1	18.3	18.5	18.9
Cyprus	6.1	6.2	6.3	6.4	6.2	6.1	6.4	6.2	6.4	7.1	7.6	7.1	6.9	7.1	7.9	8.1	8.0	7.8	7.5
Luxembourg	10.4	10.3	10.5	10.5	10.4	10.4	11.3	11.4	11.7	11.6	11.5	10.9	11.1	11.5	12.7	12.0	12.0	12.2	12.3
Malta	7.2	7.3	7.7	7.3	7.3	7.4	7.8	7.7	7.4	7.4	7.4	7.2	6.9	7.0	7.1	6.9	7.1	7.0	7.0
Netherlands	15.9	15.5	15.3	15.0	15.5	15.2	13.7	13.3	13.8	14.0	13.1	13.8	13.2	14.1	13.4	13.7	14.3	15.3	15.7
Austria	16.0	16.1	16.0	15.9	15.9	15.6	15.6	15.4	15.4	15.3	15.0	14.8	14.5	14.6	15.1	14.9	14.9	14.9	15.3
Portugal	9.9	9.8	10.0	10.2	10.1	10.5	10.7	11.0	11.5	11.3	11.6	11.5	11.3	11.6	12.1	11.9	12.0	11.5	11.9
Slovenia	16.7	14.9	14.1	14.2	14.0	14.2	14.4	14.2	14.1	14.2	14.2	14.0	13.7	14.0	14.9	15.2	15.0	15.2	15.0
Slovakia	14.8	15.7	14.7	14.7	13.9	14.0	14.2	14.5	13.7	13.0	12.5	11.7	11.6	11.8	12.5	12.3	12.3	12.5	13.5
Finland	14.3	13.8	12.9	12.6	12.5	11.8	11.8	11.6	11.5	11.4	11.6	11.9	11.6	11.6	12.3	12.2	12.2	12.8	12.9
<i>Euro area</i>	16.7	16.9	16.8	15.8	15.7	15.4	15.2	15.2	15.3	15.1	15.0	14.7	14.6	14.8	15.3	15.1	15.2	15.3	15.5
<i>Euro area excluding Italy</i> . .	17.2	17.4	17.3	16.5	16.5	16.1	15.9	15.9	16.0	15.8	15.6	15.3	15.0	15.1	15.6	15.5	15.6	15.8	15.9
Bulgaria	8.9	8.0	7.5	8.3	9.9	10.5	9.5	9.4	10.1	10.0	9.6	8.2	7.8	7.6	7.5	6.9	6.9	7.0	7.5
Czech Republic	14.3	14.2	14.6	14.3	14.4	14.4	14.3	14.9	15.0	14.8	14.8	15.0	15.1	14.9	14.3	14.6	14.7	14.8	14.8
Denmark	1.7	1.7	1.6	1.6	2.2	2.4	2.3	1.7	1.7	1.6	1.5	1.4	1.4	1.3	1.4	1.4	1.4	1.2	1.1
Croatia	11.1	11.9	11.8	11.8	11.6	11.5	11.5	11.7	12.1	11.8	11.6	11.5	11.3
Latvia	11.1	10.4	10.3	10.2	10.7	10.1	9.3	9.2	8.6	8.4	8.1	8.3	8.1	8.4	9.6	8.8	8.8	8.8	8.5
Lithuania	9.2	9.0	9.2	9.2	9.6	12.8	11.9	11.3	11.0	11.0
Hungary	14.7	13.7	13.9	13.7	13.1	13.2	12.9	12.7	12.5	12.2	12.5	12.5	13.6	13.6	13.0	12.1	13.1	13.1	13.1
Poland	11.8	12.2	13.0	13.2
Romania	7.8	7.4	7.2	9.5	11.3	11.4	11.2	11.1	9.8	9.6	10.2	10.3	10.4	9.9	10.0	9.3	9.0	8.8	8.6
Sweden	5.9	6.5	6.8	5.0	4.8	5.4	5.0	4.2	4.2	4.2	3.8	3.5	3.5	3.6	3.8	4.5	4.6	4.7	4.7
United Kingdom	6.9	6.9	7.0	7.0	7.2	7.3	7.4	7.2	7.5	7.8	7.9	7.9	7.8	8.1	8.1	7.9	7.9	7.9	7.9
<i>EU excluding euro area</i> . . .	6.7	6.7	6.9	6.8	7.0	7.1	7.2	7.0	7.2	7.4	7.5	7.5	7.5	7.7	7.8	8.1	8.1	8.2	8.1
<i>EU</i>	14.7	14.8	14.5	13.6	13.6	13.3	13.2	13.1	13.3	13.2	13.1	12.9	12.7	13.1	13.6	13.3	13.3	13.4	13.5
<i>EU excluding Italy</i>	14.8	14.8	14.5	13.9	13.8	13.5	13.4	13.3	13.5	13.3	13.2	13.0	12.8	13.1	13.6	13.3	13.3	13.4	13.5
United States	7.0	6.9	6.9	6.9	6.9	6.9	6.9	6.9	6.8	6.8	6.7	6.7	6.7	6.7	6.7	6.6	5.9	5.9	6.6
Japan	9.2	9.4	9.6	9.8	9.8	9.9	10.3	10.4	10.7	10.3	10.6	10.9	11.0	11.5	11.8	11.8	12.5	12.8
Canada	4.9	4.7	4.7	4.6	4.6	4.5	4.7	4.9	4.9	4.7	4.6	4.6	4.5	4.4	4.7	4.6	4.5	4.6	4.7

Total expenditure

(as a percentage of GDP)

	1995	1996	1997	1998	1999	2000	2001	2002	2003	2004	2005	2006	2007	2008	2009	2010	2011	2012	2013
Italy	51.8	51.6	49.6	48.3	47.3	45.5	47.5	46.8	47.2	46.8	47.1	47.6	46.8	47.8	51.1	49.9	49.1	50.4	50.5
Italy - Traditional account	52.3	52.1	50.0	48.6	47.6	45.7	47.8	47.1	47.7	47.3	47.7	48.3	47.4	48.4	51.8	50.5	49.7	51.0	51.1
Belgium	52.0	52.3	51.1	50.3	49.7	48.7	48.8	49.0	50.1	48.4	50.9	47.7	47.6	49.4	53.2	52.3	53.2	54.8	54.4
Germany	54.6	48.8	48.0	47.6	47.6	44.7	46.9	47.3	47.8	46.3	46.1	44.6	42.7	43.5	47.4	47.2	44.6	44.2	44.3
Estonia	40.4	38.0	39.7	38.9
Ireland	40.9	39.1	36.6	34.7	34.0	31.1	32.7	33.2	33.1	33.3	33.5	34.1	36.0	42.0	47.6	66.1	46.1	42.2	40.5
Greece	44.8	46.8	50.5	54.0	52.1	53.7	53.8	59.2
Spain	44.3	43.0	41.6	41.0	39.9	39.1	38.5	38.6	38.3	38.7	38.3	38.3	38.9	41.1	45.8	45.6	45.4	47.3	44.3
France	54.2	54.3	53.9	52.3	52.1	51.1	51.2	52.3	52.8	52.5	52.9	52.5	52.2	53.0	56.8	56.4	55.9	56.7	57.1
Cyprus	30.9	32.8	33.8	34.0	34.1	34.3	35.3	36.9	40.6	38.9	39.5	39.0	38.0	38.7	42.5	42.5	42.8	42.1	41.4
Luxembourg	38.5	39.7	39.2	39.6	37.7	36.4	37.1	40.6	42.3	42.7	42.5	39.6	38.1	39.4	45.0	43.9	42.3	43.4	43.8
Malta	39.1	41.6	41.7	41.5	41.8	40.2	41.7	41.4	45.2	42.2	42.2	42.3	41.1	42.6	41.9	41.0	40.9	42.7	42.5
Netherlands	53.7	47.3	45.6	44.2	43.7	41.7	43.2	44.0	44.8	43.9	42.7	43.5	42.8	43.8	48.2	48.2	47.0	47.5	46.8
Austria	54.9	55.0	52.1	52.1	51.7	50.3	51.0	50.7	51.0	53.4	51.0	50.2	49.1	49.8	54.1	52.8	50.9	51.0	50.9
Portugal	42.6	43.1	42.4	42.7	42.6	42.6	44.1	43.7	45.3	46.1	46.7	45.2	44.5	45.3	50.2	51.8	50.0	48.5	50.1
Slovenia	52.1	44.0	44.2	45.0	45.8	46.1	47.0	45.8	45.8	45.3	44.9	44.2	42.2	44.0	48.5	49.2	49.8	48.1	59.7
Slovakia	48.2	53.1	48.2	45.4	47.7	51.8	44.3	44.8	39.6	37.5	39.3	38.5	36.1	36.4	43.8	42.0	40.6	40.2	41.0
Finland	61.1	59.5	56.1	52.4	51.0	48.0	47.3	48.5	49.4	49.3	49.3	48.3	46.8	48.3	54.8	54.8	54.4	56.3	57.8
Euro area	52.7	50.2	49.0	48.0	47.5	45.6	46.7	47.0	47.4	46.8	46.7	46.1	45.4	46.6	50.6	50.5	49.0	49.5	49.4
Euro area excluding Italy	52.9	49.9	48.8	47.9	47.5	45.7	46.5	47.0	47.4	46.8	46.6	45.7	45.1	46.3	50.5	50.6	49.0	49.3	49.2
Bulgaria	41.3	43.1	30.5	34.7	39.1	40.3	39.9	39.1	38.7	38.0	37.1	34.2	38.2	37.7	40.6	37.4	34.7	35.2	38.3
Czech Republic	51.8	40.9	41.5	41.7	41.0	40.4	42.5	44.3	48.5	42.1	41.8	40.8	40.0	40.2	43.6	43.0	42.5	43.8	42.0
Denmark	58.5	58.0	55.9	55.4	54.5	52.7	52.8	53.2	53.6	53.0	51.2	49.8	49.6	50.5	56.8	57.1	56.9	58.8	56.7
Croatia	45.4	47.8	46.8	46.6	45.0	44.9	44.7	44.3	47.2	46.8	48.2	46.9	47.0
Latvia	35.7	35.5	35.3	38.2	41.3	37.7	34.9	35.2	33.4	34.5	34.2	36.0	33.9	37.0	43.4	44.2	38.9	36.6	35.7
Lithuania	34.1	34.1	34.3	35.3	38.1	44.9	42.3	42.5	36.1	35.5
Hungary	55.4	51.1	49.6	50.8	48.8	47.3	47.4	51.1	49.3	48.9	49.8	51.9	50.2	48.9	50.8	49.7	49.9	48.7	49.7
Poland	45.9	43.9	42.9	42.2
Romania	34.1	32.9	34.4	35.6	39.0	38.4	36.1	34.9	33.2	33.4	33.4	35.3	38.3	38.9	40.6	39.6	39.2	36.4	35.1
Sweden	63.5	61.4	59.2	57.3	56.6	53.6	53.0	54.2	54.4	52.8	52.7	51.3	49.7	50.3	53.1	52.0	51.4	52.6	53.2
United Kingdom	41.9	40.2	38.9	38.3	38.2	37.9	39.3	40.1	40.9	41.9	42.5	42.7	42.6	46.2	49.3	48.3	46.5	46.7	45.3
EU excluding euro area	47.1	45.2	43.1	42.3	42.1	41.3	42.1	43.1	43.9	44.0	44.1	44.0	43.7	46.2	49.5	48.3	47.0	47.1	46.1
EU	51.6	49.1	47.6	46.7	46.2	44.5	45.6	46.0	46.5	46.1	46.1	45.5	44.9	46.5	50.4	49.9	48.5	48.9	48.5
EU excluding Italy	51.6	48.7	47.3	46.4	46.0	44.4	45.3	45.9	46.4	46.0	45.9	45.2	44.6	46.3	50.3	49.9	48.4	48.7	48.3
United States	37.1	36.4	35.3	34.4	34.0	33.7	34.9	36.0	36.6	36.3	36.4	36.1	36.9	39.0	42.9	42.6	41.5	40.1	38.7
Japan	35.7	36.4	35.3	41.5	38.2	38.8	38.0	38.3	37.8	36.6	36.4	36.0	35.8	36.9	41.9	40.7	41.9	42.0
Canada	47.7	45.8	43.5	43.5	41.8	40.5	41.2	40.4	40.2	39.0	38.4	38.6	38.6	39.2	43.7	43.3	41.7	41.2	40.8

Total expenditure, excluding interest payments

(as a percentage of GDP)

	1995	1996	1997	1998	1999	2000	2001	2002	2003	2004	2005	2006	2007	2008	2009	2010	2011	2012	2013
Italy	40.6	40.5	40.4	40.4	41.0	39.4	41.4	41.3	42.3	42.2	42.6	43.2	42.0	42.9	46.7	45.6	44.5	45.2	45.7
Italy - Traditional account	41.2	41.0	40.8	40.7	41.2	39.6	41.7	41.7	42.7	42.7	43.2	43.8	42.6	43.5	47.4	46.3	45.0	45.8	46.3
Belgium	43.2	44.0	43.5	43.0	43.0	42.2	42.4	43.4	45.0	43.8	46.7	43.8	43.8	45.7	49.6	48.9	49.8	51.4	51.2
Germany	51.2	45.4	44.7	44.3	44.6	41.5	43.9	44.3	44.8	43.5	43.3	41.9	40.1	40.8	44.8	44.7	42.1	41.9	42.3
Estonia	40.3	37.9	39.6	38.8
Ireland	35.8	34.7	32.9	31.4	31.7	29.1	31.2	31.9	31.9	32.2	32.5	33.1	35.0	40.7	45.6	63.1	42.7	38.1	36.1
Greece	40.3	42.2	45.6	49.0	46.2	46.5	48.8	55.2
Spain	39.4	38.0	37.1	37.0	36.5	35.9	35.5	36.0	36.0	36.7	36.6	36.7	37.4	39.6	44.1	43.7	43.0	44.4	41.0
France	50.9	50.9	50.6	49.1	49.1	48.3	48.3	49.4	50.0	49.8	50.3	50.0	49.6	50.2	54.4	54.1	53.3	54.1	54.9
Cyprus	29.0	30.6	31.5	31.1	31.3	31.2	32.2	34.0	37.4	35.8	36.3	36.0	35.2	36.1	40.2	40.4	40.6	39.2	38.3
Luxembourg	38.0	39.2	38.7	39.1	37.3	36.1	36.8	40.3	42.1	42.6	42.3	39.4	37.8	39.0	44.6	43.5	41.9	43.0	43.4
Malta	37.3	39.6	39.3	38.6	38.0	36.2	38.0	37.5	41.6	38.5	38.5	38.6	37.7	39.2	38.6	38.0	37.7	39.6	39.6
Netherlands	48.6	42.4	41.1	40.0	39.8	38.4	40.3	41.4	42.4	41.6	40.5	41.4	40.8	41.8	46.1	46.4	45.3	45.8	45.3
Austria	50.9	51.1	48.5	48.5	48.3	46.8	47.4	47.2	47.8	50.4	47.7	47.1	46.0	46.8	50.9	49.9	48.1	48.3	48.4
Portugal	37.1	38.3	38.6	39.6	39.6	39.6	41.1	40.9	42.7	43.5	44.1	42.5	41.5	42.2	47.2	48.9	45.7	43.5	45.1
Slovenia	50.0	41.9	41.9	42.9	43.5	43.8	44.6	43.7	43.9	43.7	43.4	42.8	40.9	42.9	47.2	47.6	47.9	46.1	57.2
Slovakia	45.8	50.6	45.9	42.9	44.4	47.8	40.4	41.3	37.1	35.4	37.6	37.0	34.7	35.2	42.4	40.7	39.0	38.4	39.1
Finland	57.2	55.5	52.0	48.9	48.1	45.3	44.8	46.5	47.6	47.6	47.7	46.8	45.4	46.9	53.4	53.4	53.0	54.9	56.6
Euro area	47.6	45.0	44.2	43.6	43.7	41.9	43.1	43.6	44.2	43.8	43.8	43.2	42.5	43.6	47.8	47.7	46.0	46.5	46.6
Euro area excluding Italy	48.9	45.9	45.1	44.3	44.3	42.5	43.5	44.1	44.6	44.1	44.1	43.3	42.6	43.8	48.1	48.2	46.3	46.8	46.8
Bulgaria	28.5	24.0	23.9	31.0	35.6	36.2	35.7	36.9	36.5	36.1	35.5	32.9	37.1	36.9	39.8	36.6	33.9	34.3	37.5
Czech Republic	50.8	39.7	40.4	40.7	40.1	39.6	41.6	43.2	47.5	41.1	40.7	39.8	38.9	39.2	42.4	41.6	41.1	42.4	40.7
Denmark	52.7	52.4	50.9	50.9	50.4	49.0	49.5	50.1	50.9	50.5	49.2	48.0	48.0	49.1	54.9	55.1	54.9	56.9	54.9
Croatia	43.6	46.2	45.2	45.0	43.3	43.3	43.1	42.7	45.0	44.5	45.3	43.7	43.6
Latvia	34.9	34.2	34.4	37.5	40.6	36.7	34.0	34.5	32.7	33.8	33.6	35.6	33.5	36.4	41.9	42.5	37.1	34.9	34.2
Lithuania	33.1	33.3	33.6	34.6	37.4	43.7	40.5	40.6	34.1	33.7
Hungary	46.6	42.0	41.2	43.8	42.1	42.0	42.7	47.1	45.2	44.5	45.7	48.0	46.2	44.8	46.3	45.6	45.7	44.1	45.1
Poland	43.4	41.4	40.2	39.7
Romania	32.5	31.2	30.0	31.6	34.0	34.5	32.7	32.4	31.6	31.9	32.1	34.5	37.6	38.2	39.1	38.1	37.6	34.6	33.3
Sweden	58.4	56.3	54.3	52.9	52.8	50.3	50.4	51.3	52.2	51.1	50.9	49.7	48.0	48.8	51.9	51.0	50.3	51.7	52.4
United Kingdom	38.5	36.9	35.5	34.9	35.4	35.3	37.0	38.2	39.0	40.0	40.5	40.6	40.3	44.0	47.4	45.4	43.3	43.8	42.4
EU excluding euro area	43.2	41.3	39.3	38.8	39.1	38.5	39.7	40.9	41.9	42.0	42.1	42.0	41.7	44.2	47.7	45.9	44.3	44.6	43.7
EU	46.7	44.2	43.1	42.5	42.6	41.0	42.2	42.9	43.6	43.3	43.4	42.9	42.3	43.8	47.8	47.2	45.6	46.0	45.8
EU excluding Italy	47.6	44.8	43.5	42.8	42.8	41.3	42.4	43.2	43.8	43.5	43.5	42.9	42.3	43.9	48.0	47.5	45.8	46.1	45.9
United States	31.7	31.2	30.4	29.9	29.9	29.8	31.3	32.6	33.1	33.0	33.0	32.7	33.3	35.5	39.2	38.9	37.6	36.2	35.1
Japan	32.4	33.1	32.1	38.1	34.9	35.6	35.3	35.9	35.8	34.7	34.7	34.2	33.9	35.0	39.9	38.7	39.7	39.8
Canada	38.3	36.9	35.3	35.4	34.3	33.5	34.7	34.7	35.0	34.2	34.0	34.4	34.6	35.4	40.0	39.7	38.2	37.9	37.5

Current expenditure

(as a percentage of GDP)

	1995	1996	1997	1998	1999	2000	2001	2002	2003	2004	2005	2006	2007	2008	2009	2010	2011	2012	2013
Italy	46.8	47.5	45.7	44.1	43.0	42.4	42.9	42.6	42.5	42.3	42.5	42.1	42.2	43.5	45.9	45.7	45.3	46.4	46.9
Italy - Traditional account	47.4	47.9	46.1	44.4	43.2	42.6	43.2	43.0	43.0	42.8	43.1	42.8	42.8	44.1	46.6	46.4	45.9	47.0	47.5
Belgium	48.7	49.0	47.3	46.8	46.0	45.1	45.7	46.2	46.7	45.5	45.5	44.8	44.4	46.2	49.4	48.7	49.1	50.0	50.4
Germany	44.3	45.1	44.5	44.0	44.0	43.4	43.0	43.5	44.1	42.9	42.8	41.4	39.7	40.1	43.9	42.7	41.2	41.0	41.3
Estonia	36.1	33.6	32.6	32.6
Ireland	37.1	35.5	33.0	31.1	28.3	26.6	27.5	28.3	28.6	28.8	29.1	29.6	30.4	35.0	40.2	40.2	38.9	39.3	38.6
Greece	39.5	41.0	43.5	47.3	47.2	49.5	46.9	43.7
Spain	37.8	37.6	36.5	35.7	34.7	34.0	33.2	33.1	32.9	32.9	32.8	32.7	33.1	35.2	39.4	39.9	40.6	40.5	41.2
France	48.4	49.1	48.9	47.6	47.1	46.4	46.5	47.6	48.0	47.7	47.9	47.5	47.2	47.8	51.2	51.1	50.8	51.4	52.0
Cyprus	25.8	27.2	28.2	30.6	30.4	30.6	30.7	31.7	35.7	34.6	35.7	35.0	34.1	34.8	37.3	36.9	38.1	38.2	38.0
Luxembourg	33.5	33.9	35.1	34.2	32.7	31.7	33.5	34.6	36.2	36.7	36.3	34.0	33.1	34.5	39.2	37.9	37.0	38.3	39.3
Malta	35.4	37.1	36.9	36.5	36.7	35.8	37.5	37.1	37.0	38.4	37.5	37.7	37.2	39.6	38.8	37.6	37.5	38.4	38.5
Netherlands	44.9	43.5	41.8	40.5	39.6	38.2	38.6	39.3	40.1	39.9	39.0	39.7	38.8	39.6	42.8	43.1	42.6	43.2	43.1
Austria	49.7	49.6	47.3	47.1	47.3	46.5	46.9	46.7	47.3	46.1	46.8	46.0	44.7	45.4	48.5	48.4	46.8	46.8	47.3
Portugal	37.4	37.5	36.1	36.2	36.6	37.6	38.1	38.8	40.2	40.6	41.7	41.2	40.8	41.5	45.3	44.6	45.6	45.2	46.9
Slovenia	39.6	38.9	39.5	39.4	39.9	40.9	41.7	41.1	40.8	40.3	40.3	39.4	36.8	38.1	42.5	43.8	44.1	43.7	44.9
Slovakia	39.4	41.8	40.1	38.2	38.5	38.9	38.1	37.4	35.9	34.0	34.3	34.1	32.4	32.3	38.2	37.6	36.2	36.6	37.4
Finland	54.5	54.0	51.4	47.9	46.3	44.1	43.5	44.5	45.3	45.1	45.3	44.8	43.1	44.4	50.4	50.7	50.2	52.0	53.4
Euro area	45.4	45.8	44.8	43.7	43.1	42.4	42.3	42.6	42.9	42.4	42.3	41.7	41.1	42.1	45.6	45.3	44.8	45.1	45.4
Euro area excluding Italy	45.1	45.4	44.6	43.7	43.2	42.3	42.2	42.6	43.1	42.4	42.3	41.6	40.8	41.8	45.5	45.2	44.7	44.8	45.1
Bulgaria	40.3	42.4	28.9	30.3	34.6	36.0	35.7	34.8	35.0	34.1	33.0	30.1	30.0	31.9	35.2	32.3	30.8	31.1	33.8
Czech Republic	33.0	32.8	33.4	32.7	33.9	33.8	33.8	35.4	36.5	34.8	34.2	34.1	33.8	33.7	37.0	37.0	37.1	37.0	37.6
Denmark	55.2	54.6	52.7	52.3	51.5	49.6	50.0	50.3	50.9	50.1	48.6	47.0	46.5	46.9	53.4	53.4	52.8	53.2	52.9
Croatia	39.0	41.3	38.6	38.6	37.5	37.8	37.4	37.3	40.8	41.0	41.9	42.1	42.4
Latvia	32.9	32.0	32.8	34.3	36.6	33.3	31.0	31.2	30.2	30.0	29.8	29.6	27.4	32.0	38.1	37.5	33.1	31.6	31.3
Lithuania	30.0	30.2	29.7	29.0	32.2	40.1	37.0	33.7	32.1	30.8
Hungary	48.8	46.1	43.8	42.8	43.2	41.0	40.6	41.9	43.4	43.8	44.2	44.9	44.1	44.5	46.1	44.6	43.6	43.5	44.0
Poland	39.6	37.6	37.9	37.9
Romania	29.5	28.5	31.2	32.8	35.9	34.0	32.0	30.2	28.4	28.1	29.2	28.6	30.4	31.1	34.3	33.0	31.3	30.5	29.4
Sweden	57.8	56.4	54.3	53.5	52.0	49.6	48.7	49.7	50.0	48.6	48.3	47.2	45.5	46.0	48.5	47.5	46.8	47.8	48.6
United Kingdom	38.3	37.2	36.3	35.8	35.7	35.5	36.4	37.2	37.7	38.6	39.1	39.1	39.2	40.4	43.8	44.0	42.8	42.7	42.0
EU excluding euro area	42.7	41.7	40.0	39.3	39.1	38.4	38.8	39.5	40.0	40.3	40.3	40.0	39.7	40.6	44.2	43.6	42.4	42.5	42.2
EU	44.8	44.9	43.7	42.7	42.2	41.3	41.4	41.9	42.2	41.8	41.8	41.2	40.7	41.7	45.3	44.8	44.2	44.4	44.6
EU excluding Italy	44.5	44.5	43.3	42.5	42.0	41.2	41.2	41.7	42.2	41.8	41.7	41.1	40.5	41.4	45.2	44.7	44.0	44.1	44.2
United States	33.3	32.7	31.7	30.9	30.3	30.0	31.2	32.1	32.5	32.3	32.3	32.3	32.8	34.4	37.7	38.0	37.2	36.2	35.3
Japan	31.4	31.5	31.6	32.8	36.6	36.1	37.3
Canada	37.9	37.0	36.8

Current expenditure, excluding interest payments
(as a percentage of GDP)

	1995	1996	1997	1998	1999	2000	2001	2002	2003	2004	2005	2006	2007	2008	2009	2010	2011	2012	2013
Italy	35.7	36.4	36.6	36.3	36.6	36.3	36.8	37.2	37.5	37.7	38.0	37.7	37.5	38.5	41.5	41.4	40.7	41.3	42.1
Italy - Traditional account	36.2	36.8	36.9	36.6	36.8	36.5	37.1	37.5	38.0	38.2	38.6	38.3	38.1	39.2	42.2	42.1	41.2	41.8	42.7
Belgium	39.9	40.7	39.8	39.6	39.3	38.6	39.3	40.5	41.5	40.9	41.3	40.9	40.6	42.4	45.8	45.3	45.7	46.6	47.2
Germany	40.8	41.7	41.2	40.7	41.0	40.3	40.0	40.5	41.1	40.1	40.0	38.7	37.0	37.4	41.2	40.3	38.7	38.7	39.2
Estonia	35.9	33.4	32.5	32.5
Ireland	31.9	31.1	29.3	27.7	26.0	24.6	26.0	26.9	27.4	27.7	28.1	28.5	29.4	33.7	38.2	37.3	35.5	35.2	34.2
Greece	35.0	36.4	38.6	42.3	41.3	42.2	41.9	39.7
Spain	32.9	32.6	31.9	31.6	31.3	30.9	30.3	30.5	30.6	30.9	31.1	31.1	31.5	33.6	37.7	38.0	38.2	37.6	37.9
France	45.1	45.7	45.6	44.4	44.2	43.6	43.6	44.7	45.3	45.0	45.3	45.0	44.6	45.0	48.8	48.7	48.2	48.9	49.7
Cyprus	23.9	25.0	25.9	27.7	27.5	27.4	27.5	28.7	32.4	31.6	32.5	32.1	31.3	32.2	34.9	34.9	35.9	35.3	34.8
Luxembourg	33.0	33.4	34.6	33.8	32.3	31.4	33.2	34.4	36.0	36.5	36.1	33.8	32.9	34.2	38.8	37.5	36.6	37.9	38.8
Malta	33.6	35.1	34.5	33.6	32.9	31.8	33.8	33.2	33.5	34.7	33.8	34.0	33.7	36.3	35.5	34.6	34.4	35.4	35.5
Netherlands	39.7	38.6	37.3	36.3	35.7	34.9	35.7	36.7	37.7	37.5	36.8	37.7	36.9	37.5	40.8	41.4	40.8	41.6	41.5
Austria	45.7	45.7	43.7	43.5	43.9	42.9	43.3	43.2	44.1	43.1	43.6	42.9	41.6	42.4	45.4	45.5	44.0	44.1	44.7
Portugal	31.9	32.7	32.3	33.1	33.7	34.5	35.1	35.9	37.5	38.1	39.2	38.5	37.9	38.4	42.4	41.7	41.3	40.3	42.0
Slovenia	37.5	36.8	37.2	37.3	37.6	38.6	39.4	38.9	38.9	38.7	38.8	38.0	35.5	37.1	41.2	42.2	42.3	41.7	42.4
Slovakia	37.1	39.3	37.7	35.7	35.1	34.9	34.2	34.0	33.4	31.9	32.6	32.6	31.0	31.0	36.8	36.3	34.7	34.8	35.5
Finland	50.6	49.9	47.4	44.5	43.4	41.4	40.9	42.4	43.5	43.4	43.7	43.3	41.7	43.0	49.0	49.4	48.8	50.6	52.2
Euro area	40.2	40.6	40.0	39.4	39.3	38.6	38.7	39.3	39.8	39.4	39.5	38.8	38.2	39.1	42.8	42.5	41.8	42.1	42.6
Euro area excluding Italy	41.1	41.5	40.8	40.0	39.9	39.1	39.1	39.7	40.3	39.7	39.8	39.1	38.3	39.2	43.1	42.8	42.0	42.2	42.7
Bulgaria	27.5	23.4	22.3	26.5	31.1	32.0	31.6	32.5	32.8	32.2	31.4	28.8	28.9	31.1	34.5	31.5	30.1	30.2	33.0
Czech Republic	32.0	31.7	32.4	31.6	33.0	33.0	32.9	34.3	35.4	33.8	33.2	33.0	32.7	32.7	35.7	35.7	35.7	35.5	36.3
Denmark	49.3	49.0	47.6	47.8	47.3	45.8	46.7	47.2	48.1	47.6	46.5	45.2	44.9	45.5	51.4	51.4	50.8	51.3	51.2
Croatia	37.2	39.7	37.0	36.9	35.8	36.2	35.8	35.7	38.7	38.6	39.0	38.8	39.0
Latvia	32.1	30.7	31.9	33.6	35.9	32.4	30.0	30.5	29.5	29.3	29.3	29.2	27.1	31.4	36.6	35.8	31.2	29.9	29.9
Lithuania	29.0	29.4	29.0	28.3	31.6	38.8	35.2	31.8	30.1	29.1
Hungary	40.1	37.0	35.3	35.7	36.5	35.7	35.9	37.9	39.4	39.4	40.1	41.0	40.0	40.4	41.6	40.5	39.5	38.9	39.5
Poland	37.1	35.1	35.2	35.5
Romania	27.9	26.7	26.8	28.8	30.9	30.1	28.6	27.8	26.8	26.7	27.9	27.8	29.7	30.4	32.8	31.5	29.7	28.8	27.6
Sweden	52.7	51.2	49.3	49.1	48.1	46.3	46.2	46.8	47.8	46.9	46.6	45.5	43.8	44.5	47.4	46.5	45.7	46.9	47.7
United Kingdom	34.9	33.9	33.0	32.5	32.9	32.9	34.2	35.3	35.8	36.7	37.1	37.1	36.9	38.2	41.9	41.1	39.6	39.8	39.1
EU excluding euro area	38.7	37.7	36.2	35.7	36.0	35.6	36.4	37.4	38.0	38.3	38.4	38.1	37.7	38.6	42.4	41.1	39.8	40.0	39.8
EU	39.9	40.0	39.1	38.5	38.5	37.9	38.1	38.8	39.3	39.1	39.2	38.6	38.0	39.0	42.7	42.2	41.3	41.5	41.9
EU excluding Italy	40.5	40.6	39.6	38.9	38.8	38.1	38.3	39.0	39.6	39.3	39.4	38.8	38.1	39.1	42.9	42.3	41.4	41.6	41.8
United States	27.9	27.5	26.8	26.3	26.2	26.2	27.6	28.6	29.1	29.0	28.9	28.8	29.3	30.9	34.0	34.2	33.3	32.4	31.7
Japan	29.7	29.8	29.8	30.8	34.5	34.1	35.2
Canada	31.5	31.3	31.5

Interest payments

(as a percentage of GDP)

	1995	1996	1997	1998	1999	2000	2001	2002	2003	2004	2005	2006	2007	2008	2009	2010	2011	2012	2013
Italy	11.1	11.1	9.2	7.9	6.4	6.1	6.1	5.5	5.0	4.6	4.5	4.4	4.8	4.9	4.4	4.3	4.7	5.2	4.8
Belgium	8.7	8.3	7.6	7.2	6.7	6.5	6.4	5.6	5.2	4.6	4.2	3.9	3.8	3.8	3.6	3.4	3.4	3.4	3.2
Germany	3.4	3.4	3.3	3.3	3.0	3.1	3.0	3.0	2.9	2.8	2.8	2.7	2.7	2.7	2.6	2.5	2.5	2.3	2.0
Estonia	0.1	0.1	0.2	0.1
Ireland	5.1	4.4	3.7	3.4	2.4	2.0	1.4	1.3	1.2	1.1	1.0	1.0	1.0	1.3	2.0	3.0	3.4	4.1	4.4
Greece	4.5	4.6	4.9	5.0	5.9	7.3	5.0	4.0
Spain	4.9	5.0	4.5	4.1	3.4	3.2	3.0	2.6	2.3	2.0	1.7	1.6	1.6	1.5	1.7	1.9	2.4	2.9	3.3
France	3.3	3.4	3.4	3.2	2.9	2.8	2.9	2.9	2.7	2.7	2.6	2.5	2.6	2.8	2.4	2.4	2.6	2.5	2.3
Cyprus	1.9	2.2	2.3	2.9	2.8	3.1	3.1	2.9	3.3	3.0	3.2	3.0	2.8	2.6	2.3	2.1	2.2	2.9	3.1
Luxembourg	0.5	0.5	0.5	0.5	0.4	0.3	0.3	0.3	0.2	0.2	0.2	0.2	0.3	0.3	0.4	0.4	0.4	0.4	0.4
Malta	1.8	2.0	2.4	2.9	3.8	4.1	3.7	3.9	3.5	3.7	3.8	3.7	3.5	3.3	3.3	3.1	3.2	3.0	2.9
Netherlands	5.2	4.8	4.5	4.2	3.9	3.3	2.9	2.6	2.4	2.3	2.2	2.0	2.0	2.0	2.0	1.8	1.8	1.7	1.5
Austria	4.0	3.9	3.6	3.6	3.4	3.6	3.6	3.5	3.2	3.0	3.2	3.1	3.1	3.0	3.2	2.9	2.8	2.7	2.6
Portugal	5.5	4.8	3.8	3.1	2.9	3.0	3.0	2.8	2.7	2.6	2.6	2.8	2.9	3.1	3.0	2.9	4.3	4.9	5.0
Slovenia	2.1	2.0	2.3	2.1	2.3	2.4	2.3	2.1	1.9	1.7	1.5	1.4	1.2	1.1	1.3	1.6	1.9	2.0	2.5
Slovakia	2.3	2.5	2.4	2.5	3.3	4.0	3.9	3.5	2.5	2.1	1.7	1.4	1.4	1.2	1.4	1.3	1.5	1.8	1.9
Finland	3.8	4.1	4.1	3.4	2.9	2.7	2.6	2.0	1.8	1.7	1.6	1.5	1.4	1.4	1.3	1.3	1.4	1.4	1.3
Euro area	5.1	5.2	4.8	4.4	3.8	3.7	3.6	3.4	3.2	3.0	2.9	2.8	2.9	3.0	2.8	2.7	3.0	3.0	2.8
Euro area excluding Italy . .	4.0	4.0	3.8	3.6	3.3	3.2	3.1	2.9	2.8	2.6	2.5	2.5	2.5	2.5	2.5	2.4	2.6	2.6	2.4
Bulgaria	12.8	19.1	6.5	3.7	3.5	4.0	4.1	2.2	2.2	1.9	1.6	1.3	1.1	0.9	0.8	0.7	0.7	0.8	0.8
Czech Republic	1.0	1.1	1.0	1.1	0.9	0.8	0.9	1.1	1.0	1.1	1.1	1.0	1.1	1.0	1.2	1.3	1.3	1.4	1.4
Denmark	5.8	5.6	5.0	4.5	4.1	3.7	3.4	3.1	2.8	2.5	2.1	1.8	1.6	1.4	1.9	1.9	2.0	1.8	1.7
Croatia	1.8	1.6	1.6	1.7	1.7	1.6	1.6	1.7	2.1	2.4	2.9	3.3	3.4
Latvia	0.8	1.3	0.9	0.6	0.6	0.9	0.9	0.7	0.7	0.7	0.5	0.4	0.4	0.5	1.5	1.7	1.8	1.7	1.5
Lithuania	0.9	0.8	0.7	0.7	0.7	1.3	1.8	1.8	2.0	1.8
Hungary	8.8	9.1	8.5	7.0	6.7	5.3	4.7	4.0	4.0	4.4	4.1	3.9	4.1	4.1	4.5	4.1	4.2	4.6	4.6
Poland	2.5	2.5	2.7	2.5
Romania	1.6	1.8	4.4	4.0	5.0	3.9	3.4	2.5	1.6	1.4	1.3	0.8	0.7	0.7	1.5	1.5	1.6	1.7	1.7
Sweden	5.1	5.2	5.0	4.3	3.8	3.3	2.6	2.9	2.1	1.7	1.8	1.6	1.7	1.6	1.2	1.0	1.1	0.9	0.8
United Kingdom	3.3	3.3	3.4	3.3	2.8	2.6	2.3	1.9	1.9	1.9	2.0	2.0	2.2	2.2	1.9	2.9	3.2	2.9	2.9
EU excluding euro area . . .	3.9	3.9	3.8	3.6	3.1	2.8	2.4	2.2	2.0	2.0	2.0	1.9	2.0	2.0	1.8	2.4	2.6	2.5	2.4
EU	4.9	4.9	4.5	4.2	3.7	3.5	3.3	3.1	2.9	2.7	2.7	2.6	2.7	2.7	2.6	2.7	2.9	2.9	2.7
EU excluding Italy	4.0	4.0	3.8	3.6	3.2	3.1	2.9	2.7	2.6	2.4	2.4	2.3	2.3	2.4	2.3	2.4	2.6	2.6	2.4
United States	5.5	5.2	4.9	4.6	4.1	3.8	3.6	3.4	3.4	3.3	3.4	3.5	3.6	3.4	3.7	3.7	3.9	3.8	3.6
Japan	3.3	3.3	3.3	3.3	3.4	3.2	2.7	2.3	2.0	1.9	1.7	1.8	1.9	2.0	2.0	2.0	2.1	2.1
Canada	9.4	8.9	8.2	8.1	7.5	7.0	6.5	5.7	5.3	4.8	4.4	4.2	4.1	3.8	3.7	3.6	3.5	3.4	3.2

Final consumption expenditure

(as a percentage of GDP)

	1995	1996	1997	1998	1999	2000	2001	2002	2003	2004	2005	2006	2007	2008	2009	2010	2011	2012	2013
Italy	17.5	17.7	17.8	17.7	17.7	17.9	18.4	18.6	19.0	19.1	19.6	19.4	18.9	19.4	20.6	20.4	19.6	19.4	19.4
Belgium	21.2	21.6	21.0	20.9	21.1	20.9	21.3	22.0	22.4	22.1	22.2	22.0	21.7	22.7	24.1	23.6	23.8	24.3	24.4
Germany	19.2	19.5	19.1	18.9	19.0	18.7	18.6	18.9	19.0	18.5	18.4	18.0	17.5	17.9	19.6	19.2	18.7	19.0	19.3
Estonia	20.1	18.9	18.7	19.1
Ireland	17.3	16.6	16.1	15.3	14.8	14.6	15.3	15.6	15.9	16.0	15.9	16.2	16.7	18.6	20.1	18.7	17.9	17.7	17.5
Greece	19.5	19.9	20.3	22.7	21.6	21.2	21.1	19.9
Spain	17.7	17.5	17.1	16.9	16.8	16.7	16.6	16.6	16.8	17.2	17.3	17.4	17.7	18.8	20.5	20.5	20.4	19.6	19.5
France	22.9	23.2	23.1	22.4	22.4	22.1	21.9	22.5	22.9	22.8	22.9	22.6	22.3	22.4	23.9	23.8	23.6	23.8	24.1
Cyprus	12.2	12.9	14.6	16.0	16.0	15.1	15.1	15.5	17.5	16.8	16.7	17.1	16.6	17.1	18.9	18.4	18.9	18.1	17.7
Luxembourg	15.1	15.5	15.6	15.0	14.6	14.3	15.4	15.8	16.3	16.5	16.6	15.4	15.0	15.3	17.2	16.7	16.3	16.8	17.3
Malta	18.0	19.1	18.4	18.3	17.8	17.7	19.0	18.8	18.8	19.1	18.1	18.6	17.9	19.7	19.8	19.5	19.4	20.1	19.8
Netherlands	22.5	21.5	21.0	20.8	20.6	20.4	20.9	22.1	22.9	22.6	22.5	23.6	23.5	24.0	26.4	26.5	26.0	26.5	26.3
Austria	19.3	19.3	19.4	19.3	19.6	19.0	18.8	18.7	18.9	18.7	19.2	19.1	18.7	19.2	20.6	20.4	19.8	19.8	19.8
Portugal	17.6	17.8	17.7	18.0	18.2	19.0	19.4	19.7	20.2	20.5	21.1	20.5	19.8	19.9	21.4	20.7	19.9	18.3	19.0
Slovenia	18.0	17.8	17.7	17.7	17.9	18.5	18.9	18.7	18.8	18.7	18.7	18.4	17.3	18.0	20.1	20.4	20.5	20.5	20.4
Slovakia	20.3	22.5	20.5	21.1	19.3	19.3	19.9	19.6	19.8	18.5	17.9	18.5	16.9	17.4	19.8	19.3	18.6	17.9	18.1
Finland	21.9	22.2	21.4	20.6	20.3	19.8	20.0	20.7	21.2	21.3	21.5	21.4	20.9	21.7	24.2	23.9	23.6	24.5	24.9
Euro area	19.9	20.0	19.7	19.4	19.4	19.3	19.3	19.7	20.0	19.9	20.0	19.8	19.5	20.0	21.7	21.4	21.0	21.0	21.1
Euro area excluding Italy . .	20.3	20.5	20.1	19.8	19.8	19.6	19.5	19.9	20.2	20.0	20.0	19.9	19.6	20.1	21.9	21.6	21.2	21.3	21.4
Bulgaria	15.1	12.0	11.9	14.7	16.9	18.1	17.9	18.1	19.2	18.6	17.8	17.5	16.5	16.5	16.0	15.8	15.0	15.1	16.5
Czech Republic	19.9	19.3	20.0	19.0	19.9	19.5	19.5	20.9	21.8	20.7	20.4	20.0	19.1	19.1	20.7	20.5	19.7	19.4	19.6
Denmark	24.1	24.1	23.6	24.1	24.4	23.9	24.3	24.9	25.0	24.9	24.5	24.2	24.3	25.2	28.1	27.6	26.8	26.9	26.8
Croatia	19.2	18.9	18.4	18.4	18.3	18.3	18.9	18.5	20.3	20.1	20.1	20.1	20.0
Latvia	23.6	22.0	21.1	22.9	22.7	20.9	20.5	20.5	21.0	19.7	17.8	17.2	17.7	19.8	18.9	18.1	18.2	17.2	16.3
Lithuania	19.0	18.3	18.9	17.3	18.4	21.0	19.7	18.2	17.3	16.8
Hungary	23.0	21.7	21.3	20.9	21.2	21.1	21.1	21.8	23.1	22.1	22.3	22.2	21.0	21.5	22.2	21.7	20.8	20.2	19.9
Poland	19.3	18.1	18.1	18.1
Romania	12.2	11.6	12.6	11.8	16.6	16.8	15.7	14.8	16.1	15.1	16.6	16.3	16.2	16.8	17.3	15.6	14.5	14.5	14.2
Sweden	25.5	25.9	25.4	25.5	25.4	24.5	24.7	25.5	25.7	25.0	24.9	24.6	24.1	24.6	26.2	25.2	25.2	25.9	26.2
United Kingdom	17.9	17.6	17.1	16.9	17.4	17.5	18.1	18.9	19.5	20.0	20.2	20.3	20.0	20.8	22.3	21.7	20.9	20.8	20.3
EU excluding euro area . .	19.7	19.5	18.8	18.6	19.1	19.0	19.4	20.2	20.7	20.9	21.0	20.9	20.5	21.2	22.8	21.8	21.1	21.1	20.8
EU	19.8	19.9	19.5	19.2	19.3	19.2	19.4	19.8	20.2	20.1	20.2	20.1	19.8	20.3	21.9	21.5	21.0	21.0	21.0
EU excluding Italy	20.2	20.2	19.8	19.5	19.6	19.4	19.5	20.0	20.4	20.3	20.3	20.2	19.9	20.4	22.1	21.6	21.2	21.2	21.3
United States	14.9	14.5	14.2	14.0	14.1	14.0	14.5	15.0	15.3	15.2	15.1	15.1	15.3	16.1	16.9	16.9	16.3	15.8	15.2
Japan	15.2	15.4	15.4	15.9	16.5	16.9	17.7	18.3	18.3	18.2	18.4	18.2	18.1	18.6	19.9	19.7	20.4	20.5
Canada	21.7	20.9	20.0	20.0	19.3	19.0	19.4	19.7	19.9	19.4	19.2	19.4	19.6	20.1	22.5	22.0	21.6	21.5	21.5

Compensation of employees

(as a percentage of GDP)

	1995	1996	1997	1998	1999	2000	2001	2002	2003	2004	2005	2006	2007	2008	2009	2010	2011	2012	2013
Italy	10.5	10.9	11.0	10.2	10.2	10.1	10.1	10.2	10.4	10.4	10.5	10.6	10.2	10.4	10.9	10.7	10.3	10.2	10.2
Belgium	11.4	11.5	11.3	11.2	11.3	11.0	11.2	11.6	11.8	11.4	11.5	11.5	11.3	11.7	12.3	12.1	12.1	12.3	12.5
Germany	8.7	8.7	8.6	8.4	8.4	8.2	8.1	8.2	8.2	8.0	7.9	7.7	7.3	7.4	8.1	7.9	7.7	7.7	7.7
Estonia	11.6	10.8	10.4	10.7
Ireland	10.7	10.2	9.7	9.0	8.5	8.3	8.6	8.9	9.2	9.3	9.8	9.9	10.1	11.3	12.3	11.7	11.2	10.9	10.7
Greece	10.7	10.9	11.4	12.9	12.3	12.4	12.4	11.9
Spain	11.0	10.9	10.6	10.4	10.3	10.1	9.9	9.7	9.8	9.8	9.7	9.7	9.9	10.6	11.6	11.6	11.4	10.8	10.9
France	13.2	13.3	13.2	13.1	13.1	12.9	12.8	13.0	13.1	12.8	12.8	12.6	12.4	12.4	13.1	13.0	12.8	12.8	12.9
Cyprus	11.7	12.4	12.8	12.6	12.6	12.6	12.3	12.7	14.2	13.7	13.6	13.6	13.3	13.3	14.8	14.5	14.8	14.6	14.2
Luxembourg	7.9	8.0	8.2	8.0	7.4	7.2	7.6	7.8	8.1	8.1	8.0	7.5	7.4	7.5	8.4	8.2	8.0	8.2	8.4
Malta	14.4	14.9	14.0	14.0	13.4	12.7	14.3	13.9	13.8	13.7	13.1	12.7	12.4	13.8	13.7	13.0	12.8	12.9	13.0
Netherlands	10.0	9.6	9.4	9.2	9.1	8.9	8.9	9.2	9.5	9.4	9.1	8.8	8.6	8.7	9.5	9.5	9.3	9.4	9.2
Austria	11.8	11.7	11.3	11.2	11.2	11.0	10.8	10.8	10.8	10.7	10.9	10.7	10.4	10.6	11.2	11.1	10.7	10.7	10.6
Portugal	12.5	12.6	12.7	13.0	13.3	13.7	13.9	14.1	14.3	14.3	14.5	13.8	13.1	13.1	14.0	13.7	12.8	11.8	12.4
Slovenia	11.1	11.0	11.0	10.7	10.7	11.1	11.5	11.3	11.5	11.3	11.3	11.0	10.4	10.8	12.2	12.4	12.5	12.5	12.5
Slovakia	9.3	9.3	9.1	9.3	9.3	8.7	8.8	9.0	8.7	7.9	7.8	7.7	7.2	7.4	8.5	8.4	8.2	8.1	8.5
Finland	14.8	15.0	14.2	13.5	13.1	12.8	12.6	12.9	13.2	13.2	13.3	13.1	12.6	12.9	14.3	14.1	13.9	14.3	14.5
<i>Euro area</i>	10.6	10.7	10.6	10.4	10.3	10.2	10.1	10.3	10.4	10.3	10.3	10.1	9.9	10.1	10.9	10.7	10.4	10.3	10.4
<i>Euro area excluding Italy</i> . .	10.7	10.7	10.6	10.4	10.4	10.2	10.1	10.3	10.4	10.2	10.2	10.0	9.8	10.0	10.8	10.7	10.5	10.4	10.4
Bulgaria	8.8	7.1	6.4	8.7	10.0	9.9	8.4	9.2	9.9	9.8	9.3	8.6	8.5	8.9	9.6	9.3	8.8	8.8	9.6
Czech Republic	6.8	7.0	6.9	6.3	6.8	6.5	6.7	7.2	7.6	7.3	7.3	7.2	7.0	7.0	7.5	7.2	7.0	7.1	7.2
Denmark	16.1	16.0	15.8	16.0	16.1	15.5	15.7	16.0	16.3	16.1	15.6	15.4	15.3	15.6	17.6	17.4	16.9	16.8	16.8
Croatia	12.0	11.9	11.5	11.4	11.2	10.9	11.3	11.2	12.3	12.2	12.4	12.2	12.0
Latvia	10.3	10.4	10.1	10.2	11.0	10.8	10.2	10.2	10.2	10.0	9.5	9.4	9.9	11.4	11.9	10.2	9.5	9.1	9.2
Lithuania	10.8	10.3	10.4	9.8	10.6	12.7	10.9	10.2	9.7	9.5
Hungary	11.7	10.7	10.5	10.5	10.7	10.6	11.0	12.1	13.1	12.5	12.4	12.0	11.5	11.4	11.3	10.9	10.2	10.0	10.1
Poland	11.0	10.6	10.4	10.3
Romania	6.6	6.4	5.4	5.8	8.1	7.9	8.3	8.5	8.1	8.1	8.7	9.2	9.7	10.3	10.7	9.5	7.8	7.7	8.0
Sweden	13.5	13.9	13.6	12.6	12.6	12.4	12.6	12.8	13.1	12.9	12.8	12.5	12.3	12.4	12.8	12.2	12.1	12.5	12.6
United Kingdom	10.0	9.9	9.6	9.3	9.3	9.3	9.8	10.0	10.3	10.7	10.9	10.9	10.6	10.6	11.2	11.1	10.6	10.4	9.8
<i>EU excluding euro area</i> . . .	11.0	10.9	10.5	10.1	10.2	10.1	10.5	10.7	11.0	11.2	11.3	11.2	11.0	11.0	11.7	11.4	10.9	10.8	10.5
<i>EU</i>	10.7	10.8	10.6	10.3	10.3	10.2	10.2	10.4	10.5	10.5	10.5	10.4	10.2	10.3	11.1	10.9	10.6	10.5	10.4
<i>EU excluding Italy</i>	10.7	10.8	10.5	10.3	10.3	10.2	10.2	10.4	10.6	10.5	10.5	10.4	10.2	10.3	11.1	10.9	10.6	10.5	10.4
United States	10.2	9.9	9.7	9.6	9.6	9.5	9.9	10.2	10.4	10.3	10.1	10.0	10.1	10.4	11.0	11.0	10.6	10.3	10.0
Japan	6.2	6.2	6.2	6.4	6.5	6.5	6.5	6.7	6.5	6.4	6.3	6.2	6.2	6.2	6.5	6.1	6.3	6.2
Canada	13.5	12.8	12.2	11.9	11.5	11.2	11.3	11.5	11.7	11.3	11.1	11.3	11.4	11.5	12.9	12.4	12.2	12.1	12.1

Social benefits other than social transfers in kind

(as a percentage of GDP)

	1995	1996	1997	1998	1999	2000	2001	2002	2003	2004	2005	2006	2007	2008	2009	2010	2011	2012	2013
Italy	15.6	15.9	16.3	16.0	16.2	15.8	15.6	15.9	16.1	16.2	16.3	16.3	16.4	17.0	18.5	18.6	18.6	19.1	19.7
Belgium	15.6	15.7	15.5	15.2	14.9	14.5	14.6	15.1	15.3	15.0	14.9	14.7	14.7	15.2	16.5	16.2	16.3	16.8	17.2
Germany	17.2	18.0	18.0	17.7	18.0	17.5	17.6	18.0	18.4	18.1	17.9	17.1	16.0	15.8	17.4	16.7	15.7	15.6	15.7
Estonia	12.7	11.3	10.9	10.7
Ireland	10.7	10.3	10.4	9.5	8.3	7.6	8.1	8.6	8.6	8.8	9.2	9.4	9.9	11.9	14.7	14.7	14.2	14.3	13.7
Greece	14.0	14.6	16.1	17.6	17.8	19.3	19.8	18.5
Spain	13.2	13.1	12.7	12.2	11.9	11.7	11.5	11.6	11.5	11.6	11.5	11.3	11.5	12.3	14.4	15.1	15.3	16.0	16.3
France	17.6	17.7	17.8	17.4	17.2	16.7	16.8	17.1	17.3	17.3	17.5	17.5	17.4	17.6	19.2	19.2	19.1	19.5	19.9
Cyprus	7.3	7.7	8.1	8.2	8.4	8.5	8.7	9.6	10.5	11.1	11.7	11.2	10.5	11.1	12.2	13.0	13.4	13.4	13.8
Luxembourg	13.6	13.5	13.8	13.6	12.8	12.5	13.5	14.2	15.2	14.9	14.8	13.9	13.5	14.3	16.6	15.8	15.2	15.7	16.0
Malta	11.0	11.9	12.0	12.1	12.1	11.4	11.8	11.9	11.8	11.9	12.0	11.8	11.9	11.7	12.5	12.2	12.1	12.4	12.3
Netherlands	14.2	13.8	12.8	11.9	11.3	10.5	10.4	10.5	10.8	10.8	10.4	10.1	9.7	9.7	10.7	11.0	11.1	11.5	11.9
Austria	19.9	19.8	19.2	18.9	18.9	18.8	18.7	18.9	19.2	18.8	18.5	18.1	17.6	17.8	19.2	19.4	18.7	18.8	19.2
Portugal	10.7	10.8	10.6	10.8	10.8	11.1	11.4	11.9	13.1	13.5	14.0	14.1	14.1	14.6	16.4	16.4	17.0	17.5	18.4
Slovenia	15.3	15.1	15.5	15.5	15.5	15.6	15.6	15.6	15.6	15.5	15.4	15.0	14.1	14.4	16.2	16.8	17.2	17.2	17.1
Slovakia	13.9	13.9	13.3	13.4	14.1	13.4	13.4	13.5	11.7	12.4	12.5	12.1	11.8	11.5	14.0	14.3	13.8	14.0	14.0
Finland	21.3	20.7	19.1	17.6	17.0	15.7	15.3	15.8	16.1	15.9	15.8	15.3	14.5	14.7	17.3	17.5	17.2	18.1	19.1
<i>Euro area</i>	16.4	16.6	16.6	16.2	16.1	15.6	15.5	15.8	16.0	15.9	15.8	15.5	15.1	15.4	17.1	17.0	16.8	17.1	17.3
<i>Euro area excluding Italy</i> . .	16.6	16.8	16.6	16.2	16.1	15.5	15.5	15.8	16.0	15.9	15.8	15.3	14.9	15.1	16.8	16.7	16.4	16.7	16.9
Bulgaria	9.1	9.0	8.1	9.1	10.8	12.0	11.4	11.6	11.0	10.9	10.4	10.0	9.2	9.8	11.7	12.3	11.4	11.3	12.1
Czech Republic	10.8	11.1	11.6	11.6	12.1	12.4	12.1	12.4	12.3	11.8	11.5	11.6	11.9	11.8	13.0	13.1	13.1	13.2	13.3
Denmark	19.5	18.9	18.0	17.4	16.9	16.3	16.4	16.5	17.2	16.9	16.2	15.2	14.8	14.7	16.7	17.4	17.4	17.7	17.8
Croatia	13.1	16.1	13.3	13.6	12.5	13.3	12.6	12.2	13.7	13.8	14.1	14.1	13.5
Latvia	11.7	12.3	12.1	12.7	14.6	12.4	11.2	9.9	9.0	8.8	7.9	7.5	6.6	7.6	12.4	12.5	10.6	9.7	9.6
Lithuania	9.7	9.3	9.2	9.7	11.5	16.2	14.3	12.5	12.0	11.2
Hungary	14.9	13.3	12.4	12.9	13.1	12.6	12.5	13.1	13.7	13.8	14.3	14.8	15.2	15.6	16.2	15.7	15.4	15.2	14.9
Poland	14.6	13.9	14.0	14.3
Romania	9.2	9.0	9.4	10.6	10.3	9.7	9.7	9.3	8.5	8.8	9.0	8.7	9.2	10.2	12.5	12.7	11.8	11.2	10.6
Sweden	17.2	16.4	15.9	15.7	15.4	14.8	14.9	15.1	15.6	15.2	15.0	14.4	13.6	13.6	14.8	14.0	13.4	14.0	14.3
United Kingdom	14.1	13.6	13.3	12.8	12.4	12.0	12.4	12.4	12.3	12.3	12.2	11.9	12.1	12.6	14.3	14.2	14.2	14.6	14.5
<i>EU excluding euro area</i> . . .	14.8	14.3	13.9	13.4	13.1	12.7	12.9	13.0	13.0	12.9	12.7	12.4	12.3	12.7	14.4	14.4	14.1	14.4	14.4
<i>EU</i>	16.1	16.2	15.9	15.5	15.4	14.8	14.9	15.1	15.3	15.2	15.0	14.7	14.4	14.8	16.5	16.3	16.1	16.4	16.5
<i>EU excluding Italy</i>	16.2	16.2	15.9	15.4	15.2	14.7	14.8	15.0	15.2	15.0	14.8	14.5	14.1	14.5	16.2	16.0	15.7	16.0	16.1
United States	11.3	11.2	10.9	10.6	10.3	10.2	10.8	11.4	11.5	11.5	11.4	11.6	11.8	12.7	14.7	15.0	14.7	14.4	14.3
Japan	8.4	8.6	8.7	9.3	9.9	10.0	10.4	10.9	11.0	11.1	11.2	11.5	11.6	12.1	13.7	13.8	14.4	14.3
Canada	10.7	10.4	9.8	9.7	9.3	8.7	9.0	8.9	8.7	8.5	8.3	8.5	8.5	8.6	9.9	9.7	9.3	9.3	9.3

Public Finance Statistics in the European Union

Table 21

TUEE0400

Capital expenditure

(as a percentage of GDP)

	1995	1996	1997	1998	1999	2000	2001	2002	2003	2004	2005	2006	2007	2008	2009	2010	2011	2012	2013
Italy	4.9	4.2	3.9	4.2	4.4	3.1	4.6	4.2	4.7	4.5	4.6	5.5	4.5	4.4	5.2	4.2	3.8	4.0	3.6
Belgium	3.3	3.3	3.7	3.4	3.6	3.6	3.1	2.8	3.5	2.9	5.4	2.8	3.2	3.3	3.8	3.6	4.1	4.8	4.0
Germany	10.3	3.7	3.5	3.6	3.6	1.3	3.9	3.8	3.7	3.4	3.3	3.2	3.0	3.4	3.6	4.5	3.4	3.2	3.1
Estonia	4.4	4.5	7.1	6.3
Ireland	3.9	3.6	3.6	3.6	5.7	4.5	5.2	4.9	4.5	4.4	4.4	4.5	5.6	7.0	7.4	25.8	7.2	2.9	1.9
Greece	5.3	5.8	7.0	6.7	4.9	4.3	6.9	15.5
Spain	6.5	5.4	5.2	5.4	5.3	5.1	5.2	5.5	5.3	5.8	5.5	5.6	5.9	6.0	6.4	5.7	4.8	6.8	3.1
France	5.8	5.2	5.0	4.7	5.0	4.8	4.7	4.7	4.8	4.9	5.0	4.9	5.0	5.2	5.6	5.3	5.1	5.2	5.2
Cyprus	5.1	5.6	5.6	3.4	3.8	3.8	4.7	5.2	4.9	4.3	3.8	4.0	3.8	3.9	5.2	5.6	4.6	3.8	3.4
Luxembourg	5.0	5.8	4.1	5.3	5.1	4.7	3.6	5.9	6.1	6.0	6.2	5.6	5.0	4.9	5.8	6.0	5.3	5.1	4.6
Malta	3.7	4.5	4.8	5.0	5.1	4.4	4.2	4.3	8.1	3.8	4.7	4.6	3.9	2.9	3.0	3.4	3.4	4.2	4.1
Netherlands	8.9	3.8	3.8	3.7	4.1	3.5	4.6	4.7	4.7	4.1	3.7	3.8	3.9	4.2	5.3	5.1	4.4	4.3	3.7
Austria	5.2	5.3	4.8	5.0	4.4	3.8	4.2	4.0	3.8	7.3	4.2	4.2	4.4	4.4	5.6	4.4	4.1	4.2	3.7
Portugal	5.2	5.7	6.3	6.5	5.9	5.1	6.0	4.9	5.2	5.5	5.0	4.0	3.7	3.8	4.9	7.2	4.3	3.3	3.1
Slovenia	12.5	5.1	4.7	5.6	5.9	5.2	5.3	4.8	5.0	5.0	4.6	4.8	5.4	5.8	5.9	5.4	5.7	4.4	14.8
Slovakia	8.7	11.3	8.1	7.1	9.3	13.0	6.2	7.3	3.7	3.5	5.0	4.4	3.7	4.1	5.6	4.4	4.4	3.6	3.6
Finland	6.6	5.5	4.7	4.5	4.6	3.9	3.8	4.1	4.0	4.2	4.0	3.6	3.7	3.9	4.4	4.0	4.1	4.3	4.4
<i>Euro area</i>	7.4	4.4	4.2	4.3	4.4	3.3	4.4	4.3	4.4	4.4	4.4	4.4	4.3	4.5	5.0	5.2	4.2	4.4	4.0
<i>Euro area excluding Italy</i> . .	7.9	4.4	4.3	4.3	4.4	3.3	4.4	4.4	4.4	4.4	4.3	4.2	4.3	4.6	5.0	5.4	4.3	4.5	4.1
Bulgaria	1.0	0.7	1.6	4.4	4.5	4.3	4.1	4.3	3.8	3.9	4.1	4.1	8.2	5.8	5.4	5.1	3.8	4.1	4.5
Czech Republic	18.9	8.1	8.0	9.1	7.1	6.6	8.7	8.9	12.1	7.3	7.6	6.7	6.2	6.4	6.6	5.9	5.4	6.8	4.4
Denmark	3.3	3.4	3.2	3.1	3.1	3.1	2.8	2.9	2.8	2.9	2.6	2.8	3.1	3.6	3.4	3.7	4.2	5.6	3.8
Croatia	6.4	6.5	8.2	8.1	7.6	7.1	7.4	7.0	6.4	5.9	6.4	4.9	4.6
Latvia	2.9	3.5	2.5	3.9	4.7	4.3	4.0	4.0	3.2	4.5	4.3	6.4	6.5	5.0	5.3	6.8	5.8	5.1	4.4
Lithuania	4.1	3.9	4.6	6.3	5.9	4.9	5.3	8.8	4.0	4.6
Hungary	6.6	4.9	5.8	8.1	5.6	6.3	6.8	9.2	5.8	5.0	5.6	7.0	6.2	4.4	4.7	5.1	6.3	5.3	5.7
Poland	6.3	6.3	5.0	4.3
Romania	4.6	4.5	3.2	2.8	3.1	4.4	4.1	4.6	4.8	5.3	4.3	6.7	7.9	7.9	6.4	6.6	7.9	5.8	5.7
Sweden	5.7	5.0	5.0	3.8	4.6	4.0	4.3	4.6	4.4	4.2	4.4	4.2	4.2	4.3	4.6	4.6	4.6	4.8	4.7
United Kingdom	3.6	3.0	2.5	2.5	2.5	2.4	2.8	2.9	3.2	3.3	3.4	3.5	3.4	5.8	5.5	4.3	3.7	4.1	3.4
<i>EU excluding euro area</i> . . .	4.4	3.6	3.1	3.1	3.0	2.9	3.4	3.6	3.8	3.7	3.8	4.0	4.0	5.6	5.3	4.7	4.5	4.6	3.9
<i>EU</i>	6.8	4.2	3.9	4.0	4.0	3.2	4.2	4.1	4.3	4.2	4.2	4.3	4.2	4.8	5.1	5.1	4.3	4.5	4.0
<i>EU excluding Italy</i>	7.1	4.2	4.0	3.9	4.0	3.2	4.1	4.1	4.2	4.2	4.2	4.1	4.2	4.8	5.1	5.2	4.4	4.5	4.0
United States	3.8	3.8	3.6	3.6	3.7	3.7	3.8	4.0	4.0	4.0	4.1	3.8	4.1	4.6	5.2	4.6	4.3	3.9	3.5
Japan	5.0	4.4	4.1	4.1	5.3	4.6	4.6
Canada	3.2	3.4	3.4

Investment

(as a percentage of GDP)

	1995	1996	1997	1998	1999	2000	2001	2002	2003	2004	2005	2006	2007	2008	2009	2010	2011	2012	2013
Italy	2.6	2.7	2.7	2.8	2.9	2.8	2.9	2.4	3.0	3.0	3.0	2.9	2.9	3.0	3.4	2.9	2.8	2.5	2.4
Belgium	2.2	2.1	2.1	2.1	2.4	2.4	2.1	2.1	2.1	2.0	2.1	1.9	2.0	2.0	2.2	2.2	2.3	2.3	2.2
Germany	2.6	2.5	2.3	2.3	2.4	2.3	2.3	2.2	2.1	2.0	1.9	1.9	2.0	2.1	2.3	2.3	2.3	2.3	2.2
Estonia	4.8	5.0	6.3	5.5
Ireland	2.4	2.5	2.6	2.7	3.1	3.5	4.2	4.2	3.6	3.5	3.5	3.8	4.6	5.2	3.7	3.4	2.4	1.9	1.7
Greece	4.1	4.3	4.9	4.6	3.2	2.4	2.4	2.7
Spain	4.3	3.6	3.6	3.8	3.8	3.7	3.8	4.0	4.1	4.0	4.2	4.3	4.6	4.6	5.1	4.7	3.7	2.4	2.1
France	4.2	4.1	3.8	3.7	3.8	3.9	3.8	3.8	3.9	4.0	4.0	3.9	3.9	3.9	4.3	4.1	4.0	4.0	4.0
Cyprus	4.5	5.3	5.1	2.9	3.1	3.3	4.2	4.7	4.3	4.1	3.4	3.2	2.9	3.1	4.0	4.2	3.7	2.6	2.0
Luxembourg	3.7	4.7	3.0	4.4	4.2	3.8	4.2	4.8	4.7	4.4	4.7	3.9	3.7	3.7	4.3	4.6	4.1	3.9	3.5
Malta	3.0	3.5	3.8	4.6	4.5	3.9	3.5	4.1	4.5	3.8	4.6	4.0	3.8	2.4	2.4	2.2	2.8	3.2	2.8
Netherlands	3.7	3.8	3.6	3.5	3.8	3.7	3.9	4.2	4.2	3.9	3.8	4.0	3.9	4.0	4.3	4.1	4.0	3.7	3.6
Austria	3.9	3.7	2.9	2.9	2.8	2.6	2.4	2.6	2.4	2.4	2.9	2.8	2.9	3.2	3.4	3.2	3.0	2.9	2.9
Portugal	4.4	4.9	5.6	5.1	4.9	4.6	5.0	4.6	4.4	4.4	4.1	3.4	3.2	3.7	4.1	5.3	3.5	2.5	2.2
Slovenia	4.1	4.0	3.7	3.7	4.0	3.7	3.9	3.7	3.7	3.9	3.8	4.3	4.5	4.7	5.0	4.9	4.1	3.9	4.3
Slovakia	3.3	4.7	6.2	4.8	3.7	3.6	3.9	4.1	3.2	2.9	3.4	3.7	3.1	3.3	3.7	3.5	3.7	3.0	3.0
Finland	3.7	4.0	4.4	4.1	3.9	3.5	3.4	3.7	3.8	3.9	3.7	3.4	3.5	3.6	4.0	3.7	3.8	4.0	4.2
Euro area	3.3	3.2	3.0	3.0	3.1	3.1	3.1	3.0	3.2	3.1	3.1	3.1	3.2	3.3	3.6	3.4	3.1	2.9	2.8
Euro area excluding Italy . .	3.4	3.3	3.1	3.1	3.2	3.2	3.2	3.2	3.2	3.1	3.1	3.2	3.2	3.4	3.6	3.5	3.2	3.0	2.9
Bulgaria	0.9	0.7	1.3	3.6	4.1	3.9	3.8	3.4	3.2	3.5	3.7	4.2	5.3	5.7	5.1	4.8	3.5	3.5	4.1
Czech Republic	5.3	4.7	4.4	4.4	3.7	4.2	3.7	3.7	7.3	4.7	4.9	4.9	4.6	5.0	5.5	4.7	4.1	3.9	3.4
Denmark	2.9	3.1	2.9	2.7	2.7	2.8	3.0	2.7	2.6	2.8	2.7	2.9	3.0	3.0	3.1	3.3	3.3	3.8	3.5
Croatia	5.2	5.5	7.2	6.4	5.6	5.6	6.1	5.8	5.5	3.3	3.5	3.5	3.3
Latvia	2.2	2.6	1.7	1.7	1.9	2.0	1.7	1.8	2.8	3.5	3.4	4.9	5.9	5.1	4.8	4.6	5.0	4.8	4.0
Lithuania	3.6	3.6	4.3	5.4	5.4	4.4	5.0	4.7	3.9	3.7
Hungary	0.6	1.9	2.9	3.5	3.4	3.6	3.9	5.1	3.8	3.8	4.2	5.2	4.2	3.2	3.4	3.7	3.4	3.7	4.4
Poland	5.6	5.9	4.7	4.1
Romania	4.1	3.9	2.6	1.8	1.6	3.4	2.7	3.2	3.5	2.8	2.8	5.2	6.4	6.8	6.0	5.7	5.5	4.8	4.6
Sweden	5.1	4.9	4.4	4.3	4.3	3.9	4.2	4.3	4.2	4.1	4.1	4.1	4.1	4.3	4.5	4.5	4.4	4.6	4.5
United Kingdom	2.4	2.0	1.8	1.8	1.9	1.8	2.0	2.1	2.2	2.5	1.5	2.6	2.6	3.1	3.4	3.2	3.0	2.9	2.7
EU excluding euro area . . .	2.9	2.6	2.3	2.4	2.3	2.3	2.5	2.6	2.8	2.9	2.3	3.1	3.2	3.6	3.8	3.9	3.7	3.5	3.3
EU	3.2	3.1	2.9	2.9	2.9	2.9	3.0	2.9	3.1	3.1	2.9	3.1	3.2	3.4	3.6	3.5	3.3	3.0	2.9
EU excluding Italy	3.3	3.1	2.9	2.9	2.9	2.9	3.0	3.0	3.1	3.1	2.9	3.2	3.2	3.4	3.7	3.6	3.3	3.1	3.0
United States	3.8	3.7	3.6	3.5	3.6	3.6	3.7	3.8	3.8	3.8	3.7	3.7	3.8	4.0	4.2	4.1	3.9	3.6	3.3
Japan	5.9	6.2	5.6	5.4	5.8	5.1	5.0	4.7	4.2	3.9	3.6	3.3	3.1	3.0	3.4	3.3	3.1	3.2
Canada	3.4	3.0	2.9	2.8	2.7	2.9	3.1	3.2	3.2	3.3	3.4	3.6	3.7	3.9	4.5	4.7	4.2	4.2	4.1

METHODOLOGICAL APPENDIX

GENERAL INDICATIONS

The annual series refer to the consolidated general government accounts and gross debt of the European Union countries and of the remaining G-7 countries (the United States, Japan and Canada). For the European countries this Supplement refers to the data obtained for the Excessive deficit procedure laid down in the Maastricht Treaty. For these countries total revenue and total expenditure are defined according to Regulation (EU) No. 549/2013 (ESA2010), which confirmed the provisions of Regulation (CE) 1500/2000. The data on Italy include - as memorandum items - revenue (total and current) and expenditure (total and current, including and excluding interest payments) defined in accordance with the traditional format for general government accounts. In the transition from the traditional account aggregates to those computed in accordance with Regulation 549/2013, on the one hand, gross operating surplus and indirect taxes on products paid by general government are excluded from both revenue and expenditure items; on the other hand, proceeds from the sale of goods and services, residual sales and production for own use are added to revenue rather than deducted from expenditure. By construction the adjustments have the same impact on revenue and expenditure, leaving the balances unaltered; they affect "other current revenue" and "other current expenditure", residual items not explicitly mentioned in this Supplement.

The definition of gross debt for European countries is the one adopted in the Excessive deficit procedure following the methodological criteria described in Regulation (UE) 479/2009 of the European Council, as amended by Regulations 679/2010 of the European Council and 220/2014 of the European Commission.

The time series cover the period 1980-2013. The printable version of the Supplement provides data only for 1995-2013; those for the years 1980-1994 can be consulted through the electronic Statistical Database (BDS), available in the Statistics section of the Bank of Italy web site (<https://infostat.bancaditalia.it/inquiry/>).

The sources used are as follows:

- Istat, for the general government accounts of Italy;
- for the other European countries, European Commission, DG Economic and Financial Affairs annual macro-economic database, October 2004 (data based on the 1979 version of the European System of Accounts - ESA79) and November 2014 (data based on the current version of the European System of Accounts - ESA2010); for data on capital taxes based on ESA79, European Commission, March 1999, and Eurostat, supplemented by data supplied directly by the Commission;
- OECD, National Accounts Statistics Database, at www.oecd-ilibrary.org, November 2014 for the items of the economic accounts of Canada, Japan and the United States;
- OECD, Economic Outlook: Statistics and Projections Database, at www.oecd-ilibrary.org, November 2014 for the GDP and debt of Canada, Japan and the United States.

For Italy, the data are based on ESA95 for the period 1980-1994 and on ESA2010 for the period 1995-2013. For the other European countries, data for 1980-1994 are based on ESA79 and those from 1995 onwards on ESA2010.

For the individual items of the accounts and for gross debt, averages have been calculated for: (1) the 17 countries belonging to the euro area as of 31 December 2013 (Belgium, Germany, Estonia, Ireland, Greece, Spain, France, Italy, Cyprus, Luxembourg, Malta, the Netherlands, Austria, Portugal, Slovenia, Slovakia and Finland), both including and

excluding Italy; (2) all the EU countries, both including and excluding Italy; (3) the EU countries not belonging to the euro area as of 31 December 2013. The averages are computed as ratios of the sum, for the relevant countries, of the values of the variable under consideration to the sum, for the same countries, of the values of GDP. The values of GDP are those determined for the Excessive deficit procedure. The values of the variables used in the calculations are expressed in ECUs until 1994, in euros from 1995 onwards; national currency data have been converted into ECU or euros using the average exchange rate of each year. Where a figure is missing for a country, the average has been calculated omitting that country. Averages have been computed using data (including those for Italy) based on ESA79 until 1994. With reference to debt, averages are computed excluding intergovernmental lending in the context of the financial crisis (both bilateral loans and loans made through the European Financial Stability Facility are excluded). Data on intergovernmental loans are provided by Eurostat (Press release 158, 21 October 2014).

Data for Latvia, which adopted the euro on 1 January 2014, are not included among those of the euro area countries in this edition of the Supplement.

The figures for Germany up to and including 1990 refer to the country's western regions.

The data referring to the EU countries include the proceeds of the sale of UMTS licences. These proceeds are recorded, with a negative sign, among capital expenditure.

Data are processed according to SNA 2008 for the United States and Canada, and to SNA93 for Japan.

Because of rounding, the sum of the separate items may sometimes differ from the total shown.

Prepared by Mauro Bucci; technical assistance by Diana Nicoletti and Attilio Mattiocco.

NOTES TO THE TABLES

The order of the tables in the following notes is based on their code numbers. The notes to each table are set out below; together with references to the "Notes to the classification variables" section where appropriate.

TUEE0100 - Net borrowing (+)/lending (-)

The balance of the consolidated general government non-financial accounts. The item corresponds to the net resources that general government makes available to or draws from other sectors.

TUEE0110 - Primary net borrowing (+)/lending (-)

Net borrowing or lending excluding interest payments (see the note to Table TUEE0280).

TUEE0120 - Current account balance

The difference between current expenditure and current revenue (see the notes to Tables TUEE0160 and TUEE0260). A positive balance indicates a deficit, a negative balance a surplus.

TUEE0130 - Capital account balance

The difference between capital expenditure and capital revenue.

TUEE0140 - Gross public debt

For the EU countries, the definition is that adopted for the Excessive deficit procedure provided for in the Treaty on the European Union (on the basis of the methods specified in Council Regulation No. 479/2009). The aggregate refers to general government total gross debt at face value outstanding at the end of the year, with the exception of those liabilities of which the corresponding financial assets are held by the sector of general government.

TUEE0150 - Total revenue

The sum of current revenue and capital revenue. For the EU countries data on total revenue are compiled according to ESA2010. The data on Italy include - as

memorandum items - total revenue defined in accordance with the traditional format for general government accounts. In the transition from the traditional account aggregates to those calculated in accordance with ESA2010, gross operating surplus and indirect taxes on products paid by general government are excluded from revenue while proceeds from the sale of goods and services, residual sales and production for own use are added. An adjustment of the same size is made for total expenditure, implying a null impact on net borrowing.

TUEE0160 - Current revenue

The sum of direct taxes, indirect taxes, social security contributions and other current revenue. For the EU countries, data on current revenue are compiled according to ESA2010. The data on Italy include - as memorandum items - current revenue defined in accordance with the traditional format for general government accounts. In the transition from the traditional account aggregates to those calculated in accordance with ESA2010, gross operating surplus and indirect taxes on products paid by general government are excluded from current revenue while proceeds from the sale of goods and services, residual sales and production for own use are added. An adjustment of the same size is made for current expenditure, implying a null impact on the current balance.

TUEE0170 - Tax revenue and social security contributions

The sum of direct and indirect taxes, social security contributions and capital taxes (see the notes to Tables TUEE0210, TUEE0220 and TUEE0230).

TUEE0180 - Tax revenue and social security contributions, excluding capital taxes

The sum of direct and indirect taxes and social security contributions (see the notes to Tables TUEE0210, TUEE0220 and TUEE0230).

TUEE0210 - Direct taxes

Taxes on income and wealth due to general government.

TUEE0220 - Indirect taxes

Taxes on the production and importation of goods and services due to general government.

TUEE0230 - Social security contributions

The sum of actual social security contributions paid by workers and employers (directly or through ad hoc agencies) and imputed social security contributions.

TUEE0240 - Total expenditure

The sum of current and capital expenditure (see the notes to tables TUEE0260 and TUEE0400). For the EU countries data on current expenditure are compiled according to ESA2010. The data on Italy include - as memorandum items - current expenditure defined in accordance with the traditional format for general government accounts. In the transition from the traditional account aggregates to those calculated in accordance with ESA2010, proceeds from the sale of goods and services, residual sales and production for own use, which are computed as expenses (with a negative sign) in the traditional accounts, are excluded from current expenditure, as well as net operating surplus and consumption of fixed capital, while indirect taxes on products paid by general government are added. An adjustment of the same size is made for total revenue, implying a null impact on net borrowing.

TUEE0250 - Total expenditure, excluding interest payments

The difference between total expenditure and interest payments (see the notes to Tables TUEE0240 and TUEE0280).

TUEE0260 - Current expenditure

The sum of current transfers, interest payments and final consumption expenditure. For the EU countries, data on current expenditure are compiled according to ESA2010. The data on Italy include - as memorandum items - current expenditure defined in accordance with the traditional format for general government accounts. In the transition from the traditional account aggregates to those calculated in accordance with ESA2010, proceeds from the sale of goods and services, residual sales and production for own use, which are computed as expenses (with a negative sign) in the traditional accounts, are excluded from current expenditure as well as net operating surplus and consumption of fixed capital, while indirect taxes on products paid by general government are added. An adjustment of the same size is made for current revenue, implying a null impact on the current balance.

TUEE0270 - Current expenditure, excluding interest payments

The difference between current expenditure and interest payments (see the notes to Tables TUEE0260 and TUEE0280).

TUEE0280 - Interest payments

Interest payments and other borrowing costs. Following the introduction of ESA2010, this item does not include interest on swaps and forward rate agreements in the figures from 1995 onwards.

TUEE0290 - Final consumption expenditure

Expenditure incurred by general government (compensation of employees, purchases of goods and services, social transfers in kind related to expenditure on products supplied to households via market producers and consumption of fixed capital) for the satisfaction of individual or collective needs. Data from 1995 do not include expenditure on research and development and on weapons systems, treated as investment rather than intermediate consumption in ESA2010 (see note to Table TUEE0350).

TUEE0300 - Compensation of employees

General government payments in cash or in kind to employees, including net earnings and actual and imputed social security contributions.

TUEE0330 - Social benefits other than social transfers in kind

Social benefits, including social security and social assistance benefits in cash.

TUEE0350 - Investment

Gross (with respect to depreciation) fixed capital formation, consisting of the value of purchases less sales of durable goods to be utilized in production processes for a period longer than one year. Data from 1995, compiled according to ESA2010, include expenditure on research and development and on weapons systems.

TUEE0400 - Capital expenditure

Investment (see the note to table TUEE0350), net acquisition of other non-financial assets and capital transfers. The net acquisition of other non-financial assets includes the proceeds of the sale of UMTS licencees (with a negative sign). In EU countries, these proceeds were mainly recorded in 2000.

GENERAL INFORMATION

- I - Unless indicated otherwise, figures have been computed by the Bank of Italy.
- II - Symbols and Conventions:
- the phenomenon in question does not occur;
 - the phenomenon occurs but its value is not known;
 - .. the value is known but is nil or less than half the final digit shown.
- Figures in parentheses in roman type () are provisional. those in parentheses in italics () are estimated.
- III - The tables are identified both by a number and by an alphanumeric code that defines the content of the table in the database in the electronic archive in which information to be released to the public is held. A similar code identifies the different aggregates shown in each table.
- IV - The methodological notes in the last part of the Supplement are identified by electronic codes that refer to the tables and, within each table, to the individual aggregates. Notes that refer to a single observation are also identified by the date of that observation.

SUPPLEMENTS TO THE STATISTICAL BULLETIN

Money and Banking (monthly)

The Financial Market (monthly)

The Public Finances, borrowing requirement and debt (monthly)

Balance of Payments and International Investment Position (monthly)

Financial Accounts (quarterly)

Payment System (half yearly)

Public Finance Statistics in the European Union (half yearly)

Local Government Debt (half yearly)

Household Wealth in Italy (annual)

Sample Surveys (irregular)

Methodological Notes (irregular)

All the supplements are available on the Bank of Italy's site (www.bancaditalia.it).

Requests for clarifications concerning data contained in this publication can be sent by e-mail to statistiche@bancaditalia.it

