



BANCA D'ITALIA
EUROSISTEMA

Supplements to the Statistical Bulletin

Monetary and Financial Indicators

Public Finance Statistics in the European Union

New series

Volume XXIV - 10 June 2014

Number

31

Contents

Figure 1	-	Net borrowing (+)/lending (-) in 2013
Figure 2	-	Gross public debt in 2013
Figure 3	-	Total revenue (Regulation EC 1500/2000) in 2013
Figure 4	-	Total expenditure, excluding interest payments (Regulation EC 1500/2000) in 2013
Figure 5	-	Primary net borrowing (+)/lending(-) in 2013
Figure 6	-	Interest payments in 2013
Figure 7	-	Tax revenue and social security contributions in the leading EU countries
Figure 8	-	Current expenditure, excluding interest payments (Regulation EC 1500/2000) in the leading EU countries
Figure 9	-	Interest payments in the leading EU countries
Figure 10	-	Investment in the leading EU countries
Table 1	- (TUEE0100)	- Net borrowing (+)/lending (-)
Table 2	- (TUEE0110)	- Primary net borrowing (+)/lending (-)
Table 3	- (TUEE0120)	- Current account balance
Table 4	- (TUEE0130)	- Capital account balance
Table 5	- (TUEE0140)	- Gross public debt
Table 6	- (TUEE0150)	- Total revenue (Regulation EC 1500/2000)
Table 7	- (TUEE0160)	- Current revenue (Regulation EC 1500/2000)
Table 8	- (TUEE0170)	- Tax revenue and social security contributions
Table 9	- (TUEE0180)	- Tax revenue and social security contributions, excluding capital taxes
Table 10	- (TUEE0210)	- Direct taxes
Table 11	- (TUEE0220)	- Indirect taxes
Table 12	- (TUEE0230)	- Social security contributions
Table 13	- (TUEE0240)	- Total expenditure (Regulation EC 1500/2000)
Table 14	- (TUEE0250)	- Total expenditure, excluding interest payments (Regulation EC 1500/2000)
Table 15	- (TUEE0260)	- Current expenditure (Regulation EC 1500/2000)
Table 16	- (TUEE0270)	- Current expenditure, excluding interest payments (Regulation EC 1500/2000)
Table 17	- (TUEE0280)	- Interest payments
Table 18	- (TUEE0290)	- Final consumption expenditure
Table 19	- (TUEE0300)	- Compensation of employees
Table 20	- (TUEE0330)	- Social benefits other than social transfers in kind
Table 21	- (TUEE0400)	- Capital expenditure
Table 22	- (TUEE0350)	- Investment
Methodological Appendix		
General information		

Public Finance Statistics in the European Union

Figure 1

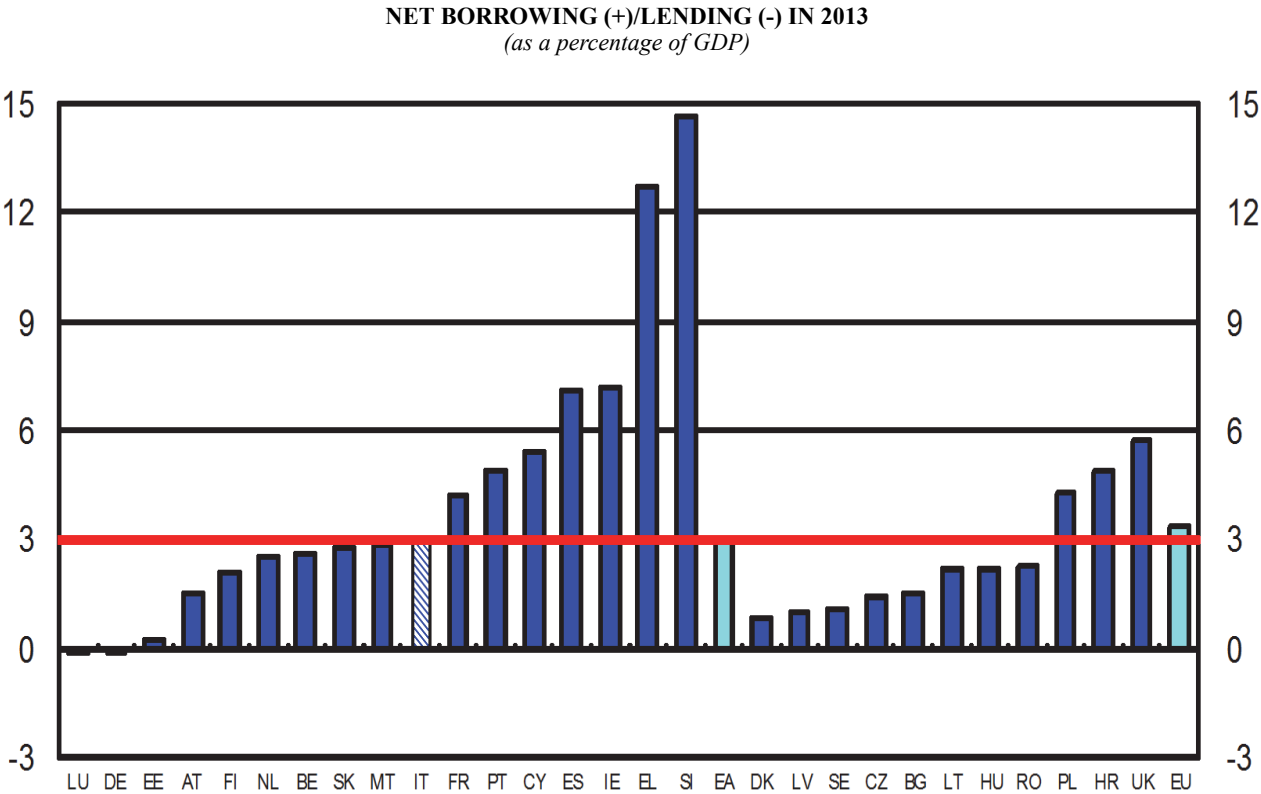
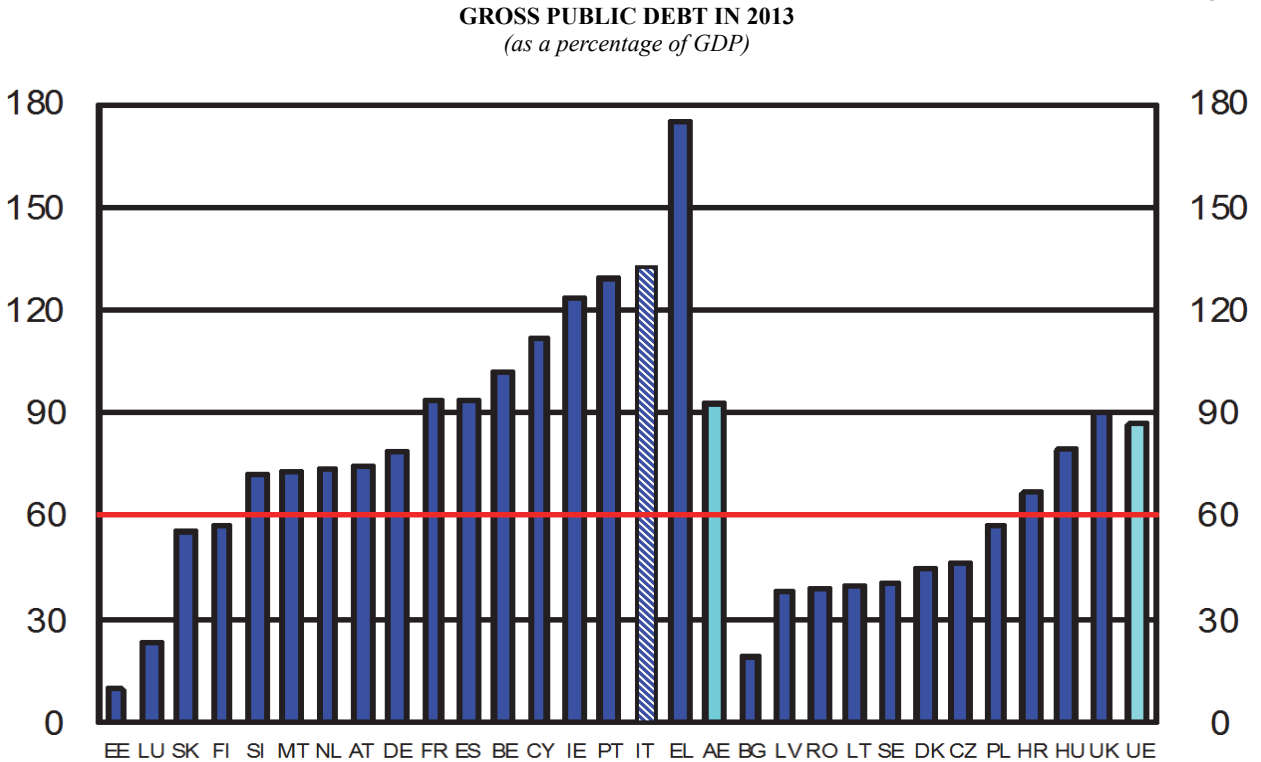


Figure 2



Public Finance Statistics in the European Union

Figure 3

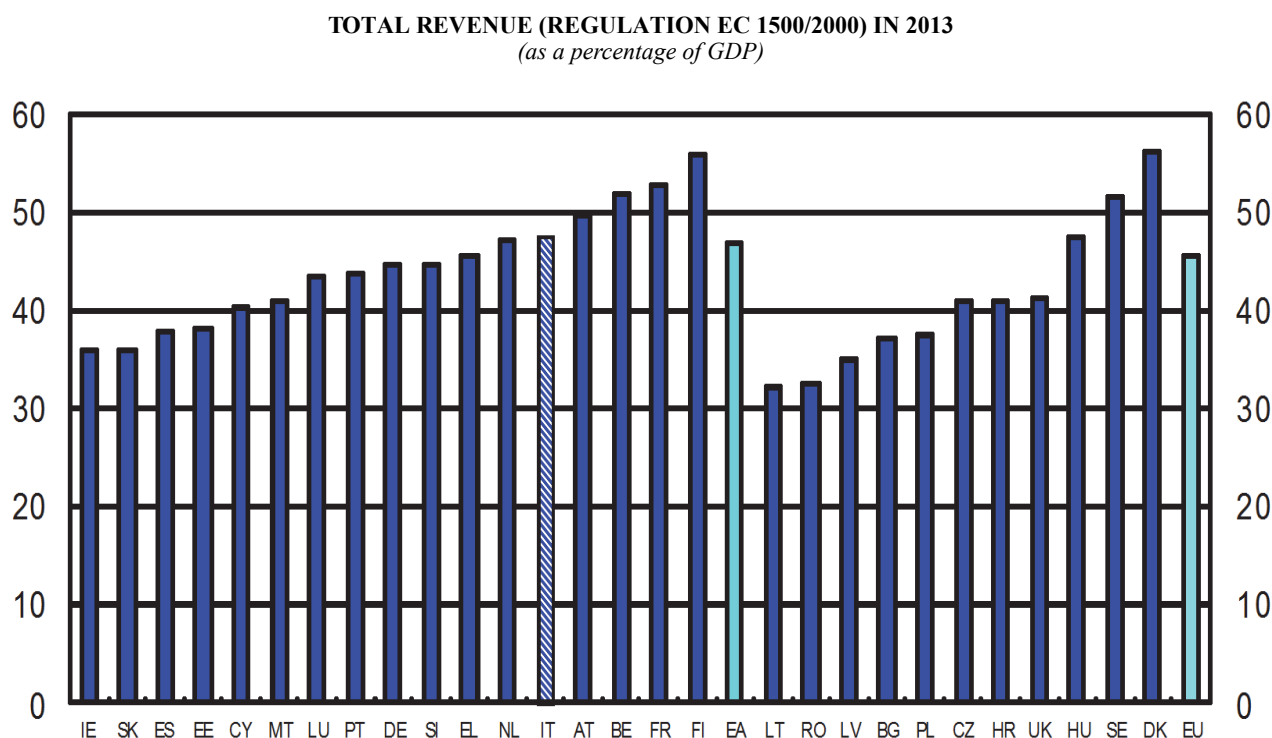
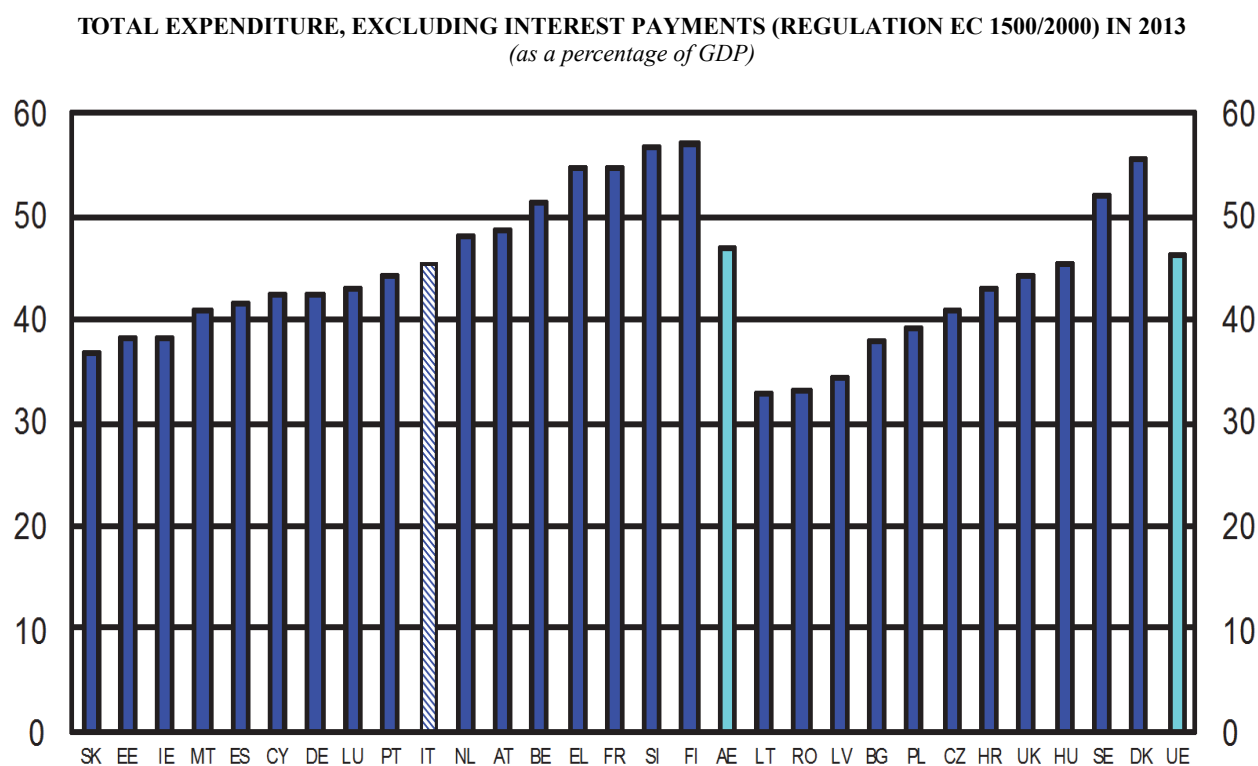


Figure 4



Public Finance Statistics in the European Union

Figure 5

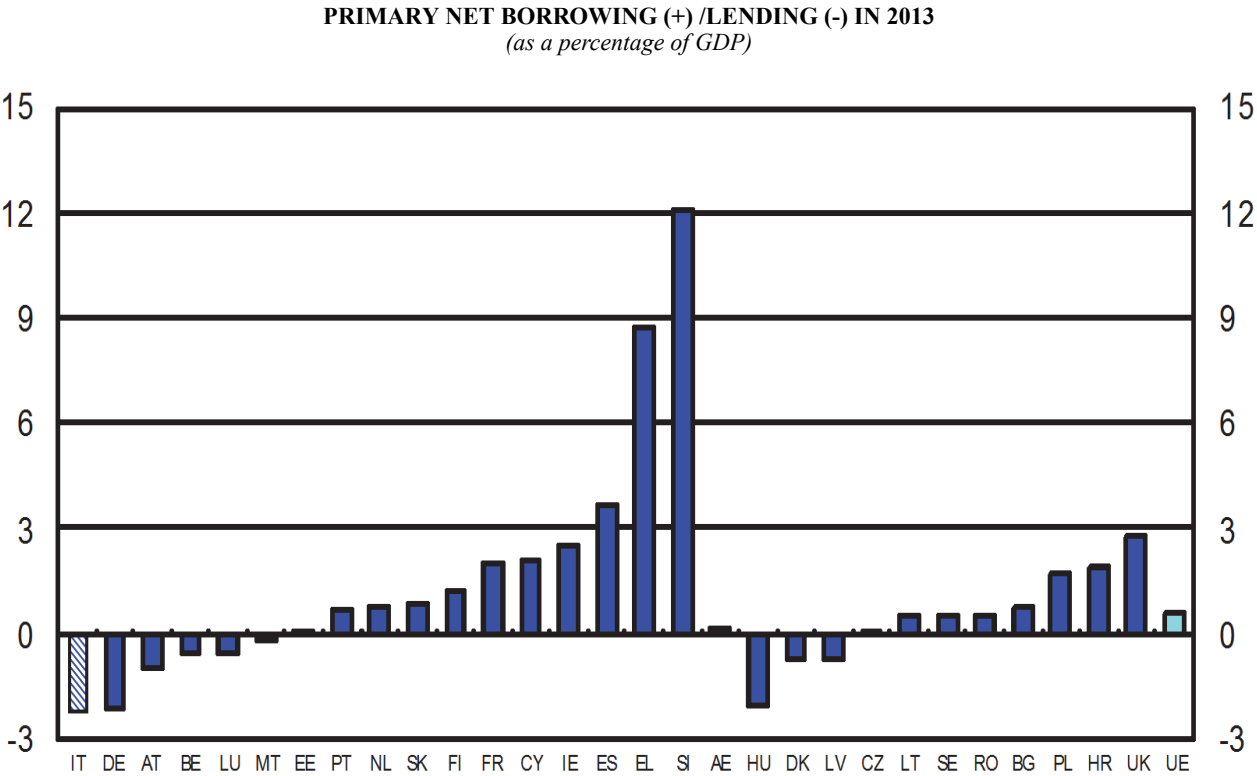


Figure 6

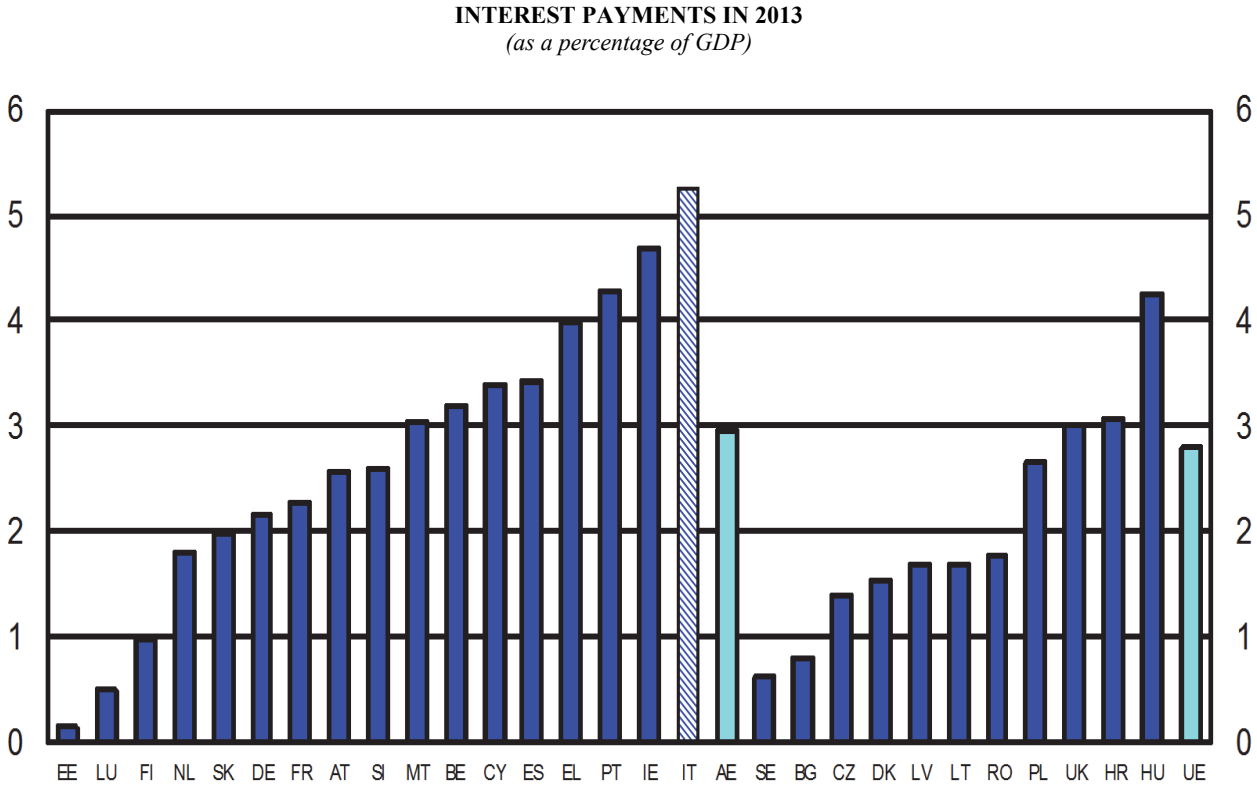


Figure 7

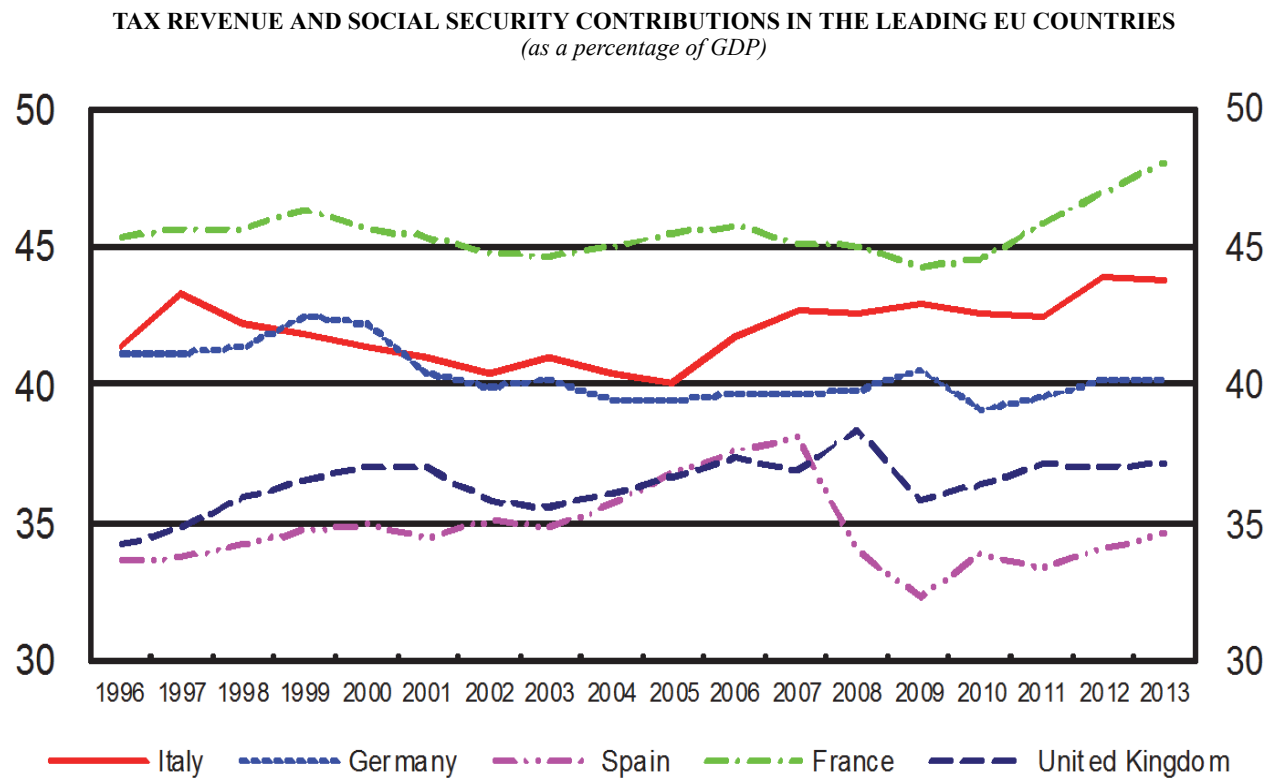


Figure 8

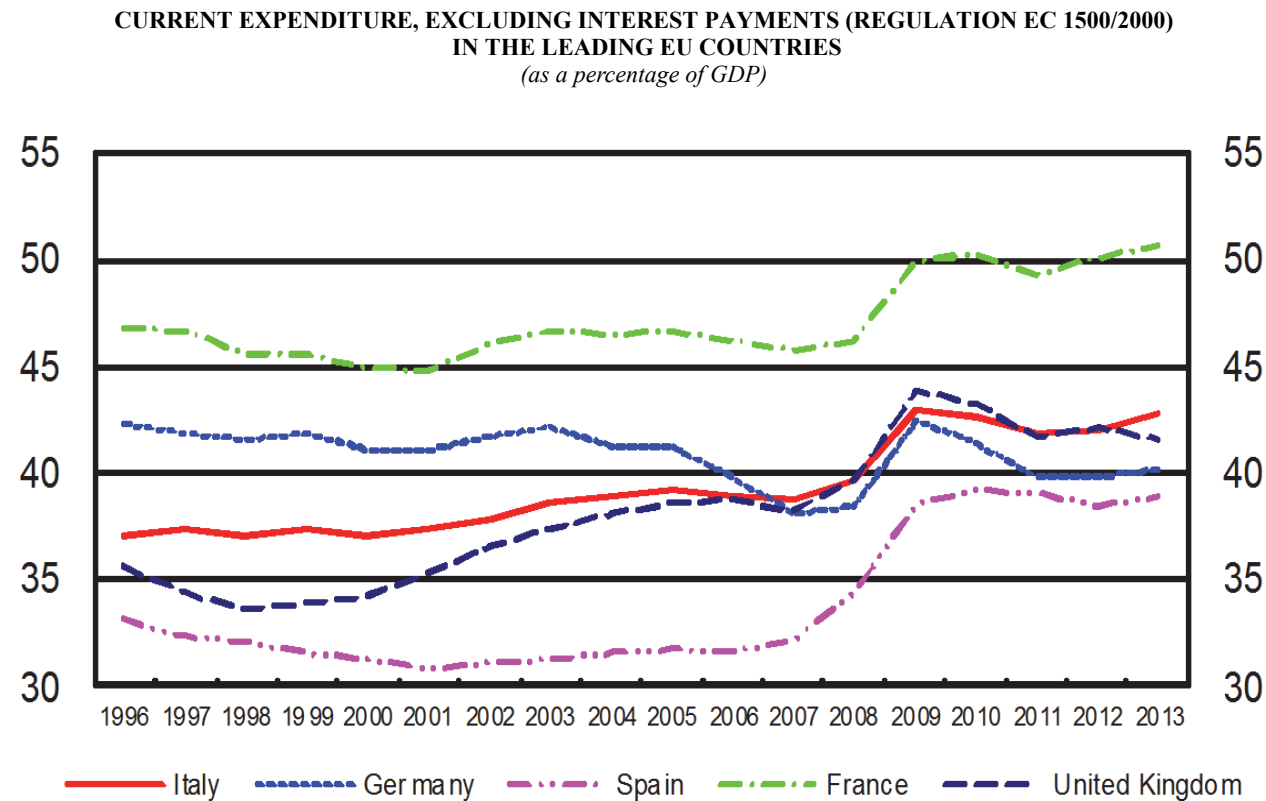


Figure 9

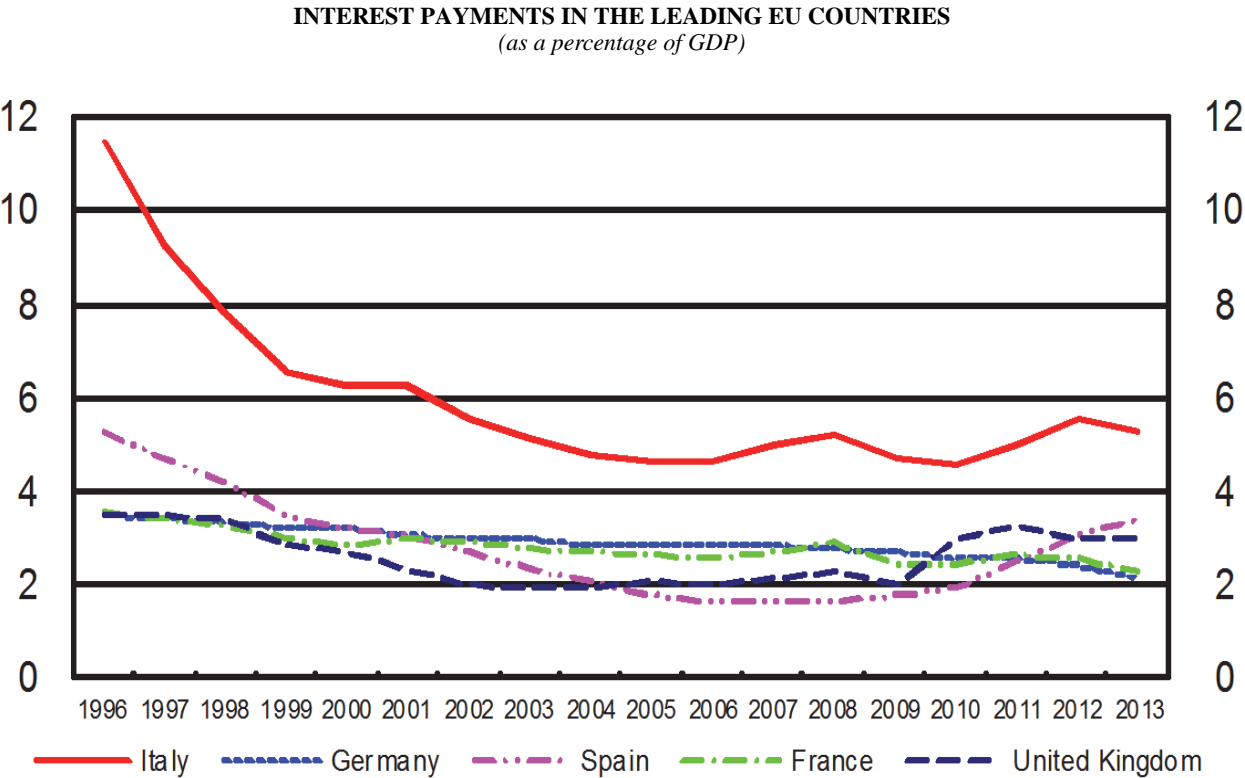
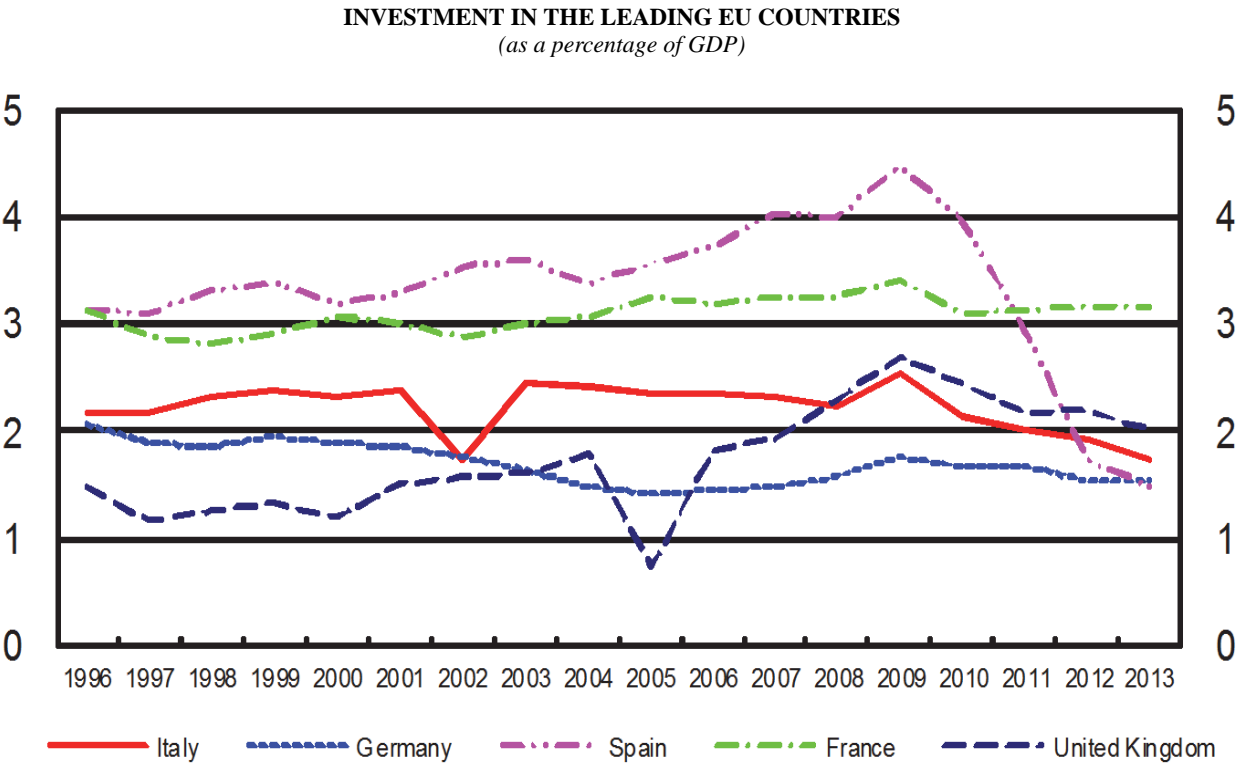


Figure 10



Public Finance Statistics in the European Union

Table 1
TUEE0100

Net borrowing (+)/lending (-) (as a percentage of GDP)

		1996	1997	1998	1999	2000	2001	2002	2003	2004	2005	2006	2007	2008	2009	2010	2011	2012	2013
Italy	S212733Y	7.0	2.7	2.7	1.9	0.8	3.1	3.1	3.6	3.5	4.4	3.4	1.6	2.7	5.5	4.5	3.7	3.0	3.0
Belgium	S416942Y	4.0	2.2	0.9	0.6	0.0	-0.4	0.1	0.1	0.1	2.5	-0.4	0.1	1.0	5.6	3.8	3.8	4.1	2.6
Germany	S413846Y	3.4	2.8	2.3	1.6	-1.1	3.1	3.8	4.2	3.8	3.3	1.6	-0.2	0.1	3.1	4.2	0.8	-0.1	0.0
Estonia	S810645Y	0.3	-2.2	0.7	3.5	0.2	0.1	-0.3	-1.7	-1.6	-1.6	-2.5	-2.4	3.0	2.0	-0.2	-1.1	0.2	0.2
Ireland	S986090Y	0.3	-1.0	-2.2	-2.6	-4.9	-0.9	0.4	-0.4	-1.4	-1.6	-2.9	-0.2	7.4	13.7	30.6	13.1	8.2	7.2
Greece	S012944Y	6.7	5.9	3.9	3.1	3.7	4.5	4.9	5.7	7.6	5.5	6.0	6.5	9.8	15.7	10.9	9.6	8.9	12.7
Spain	S188930Y	5.5	4.0	3.0	1.3	0.9	0.5	0.3	0.3	0.1	-1.3	-2.4	-2.0	4.5	11.1	9.6	9.6	10.6	7.1
France	S529905Y	4.0	3.3	2.6	1.8	1.5	1.6	3.3	4.1	3.6	2.9	2.3	2.7	3.3	7.5	7.0	5.2	4.9	4.3
Cyprus	S964736Y	3.2	5.1	4.2	4.3	2.3	2.2	4.4	6.6	4.1	2.4	1.2	-3.5	-0.9	6.1	5.3	6.3	6.4	5.4
Luxembourg	S806706Y	-1.2	-3.7	-3.4	-3.4	-6.0	-6.1	-2.1	-0.5	1.1	0.0	-1.4	-3.7	-3.2	0.7	0.8	-0.2	0.0	-0.1
Malta	S183993Y	7.9	7.4	9.7	6.9	5.7	6.3	5.7	9.0	4.6	2.9	2.7	2.3	4.6	3.7	3.5	2.7	3.3	2.8
Netherlands	S317847Y	1.9	1.2	0.9	-0.4	-2.0	0.2	2.1	3.1	1.7	0.3	-0.5	-0.2	-0.5	5.6	5.1	4.3	4.1	2.5
Austria	S229288Y	4.0	1.8	2.4	2.3	1.7	0.0	0.7	1.5	4.4	1.7	1.5	0.9	0.9	4.1	4.5	2.5	2.6	1.5
Portugal	S730692Y	4.9	3.7	3.9	3.1	3.3	4.8	3.4	3.7	4.0	6.5	4.6	3.1	3.6	10.2	9.8	4.3	6.4	4.9
Slovenia	S360626Y	1.1	2.3	2.4	3.0	3.7	4.0	2.4	2.7	2.3	1.5	1.4	0.0	1.9	6.3	5.9	6.4	4.0	14.7
Slovakia	S544183Y	9.9	6.3	5.3	7.4	12.3	6.5	8.2	2.8	2.4	2.8	3.2	1.8	2.1	8.0	7.5	4.8	4.5	2.8
Finland	S366317Y	3.4	1.3	-1.7	-1.7	-7.0	-5.1	-4.2	-2.6	-2.5	-2.9	-4.2	-5.3	-4.4	2.5	2.5	0.7	1.8	2.1
Euro area	S391488Y	4.3	2.8	2.3	1.5	0.1	2.0	2.7	3.1	2.9	2.5	1.4	0.7	2.1	6.3	6.2	4.1	3.7	3.1
Euro area excluding Italy	S473870Y	3.8	2.9	2.2	1.4	0.0	1.7	2.6	3.0	2.8	2.1	0.9	0.5	2.0	6.5	6.6	4.2	3.8	3.1
Bulgaria	S595598Y	11.2	-0.9	-1.2	-0.1	0.5	-1.1	1.2	0.4	-1.9	-1.0	-1.9	-1.2	-1.7	4.3	3.1	2.0	0.8	1.5
Czech Republic	S232571Y	3.1	3.6	4.8	3.6	3.6	5.6	6.5	6.7	2.8	3.2	2.4	0.7	2.2	5.8	4.7	3.2	4.2	1.5
Denmark	S615120Y	2.0	0.6	0.0	-1.3	-2.3	-1.5	-0.4	-0.1	-2.1	-5.2	-5.2	-4.8	-3.2	2.7	2.5	1.9	3.8	0.8
Croatia	5.3	6.4	7.8	5.0	4.9
Latvia	S994631Y	0.4	-1.5	0.0	3.8	2.8	2.0	2.3	1.6	1.1	0.4	0.6	0.7	4.4	9.2	8.2	3.5	1.3	1.0
Lithuania	S637678Y	3.2	11.7	3.0	2.8	3.2	3.5	1.9	1.3	1.5	0.5	0.4	1.0	3.3	9.4	7.2	5.5	3.2	2.2
Hungary	S763347Y	4.4	6.0	8.0	5.5	3.0	4.1	9.0	7.3	6.5	7.9	9.4	5.1	3.7	4.6	4.3	-4.3	2.1	2.2
Poland	S510168Y	4.9	4.6	4.3	2.3	3.0	5.3	5.0	6.2	5.4	4.1	3.6	1.9	3.7	7.5	7.8	5.1	3.9	4.3
Romania	S925297Y	3.6	4.4	3.2	4.4	4.7	3.5	2.0	1.5	1.2	1.2	2.2	2.9	5.7	9.0	6.8	5.5	3.0	2.3
Sweden	S122237Y	3.2	1.5	-0.7	-0.9	-3.6	-1.5	1.3	1.0	-0.6	-2.2	-2.3	-3.6	-2.2	0.7	-0.3	-0.2	0.6	1.1
United Kingdom	S725209Y	4.2	2.2	0.1	-0.9	-3.5	-0.4	2.1	3.5	3.5	3.4	2.8	2.8	5.0	11.4	10.0	7.6	6.1	5.8
EU excluding euro area	S518588Y	3.9	2.3	0.7	-0.3	-2.4	0.2	2.4	3.3	2.8	2.3	1.9	1.5	3.3	8.4	7.4	5.2	4.6	4.1
EU	S019754Y	4.2	2.7	1.9	1.0	-0.6	1.5	2.6	3.2	2.9	2.5	1.5	0.9	2.4	6.8	6.5	4.4	3.9	3.3
EU excluding Italy	S808385Y	3.8	2.7	1.8	0.9	-0.8	1.3	2.5	3.1	2.8	2.2	1.2	0.8	2.4	7.0	6.8	4.5	4.1	3.4
United States	S910261Y	3.0	1.6	0.4	0.0	-0.8	1.4	4.7	5.9	5.4	4.2	3.0	3.6	7.0	12.7	12.0	10.6	9.2
Japan	S451105Y	4.9	3.8	10.3	7.1	7.5	6.0	7.7	7.7	5.9	4.8	1.3	2.1	1.9	8.8	8.3	8.8	8.7
Canada	S763208Y	2.7	-0.2	-0.2	-1.8	-2.9	-0.8	0.0	-0.1	-1.0	-1.7	-1.8	-1.5	0.3	4.5	4.9	3.7	3.4

Primary net borrowing (+)/lending (-)

(as a percentage of GDP)

		1996	1997	1998	1999	2000	2001	2002	2003	2004	2005	2006	2007	2008	2009	2010	2011	2012	2013
Italy	S238801Y	-4.5	-6.5	-5.2	-4.6	-5.4	-3.1	-2.5	-1.5	-1.2	-0.2	-1.2	-3.4	-2.5	0.8	-0.1	-1.2	-2.5	-2.2
Belgium	S441592Y	-4.4	-5.4	-6.4	-6.2	-6.5	-6.8	-5.6	-5.1	-4.5	-1.7	-4.3	-3.8	-2.8	1.9	0.5	0.5	0.7	-0.6
Germany	S440855Y	-0.1	-0.6	-1.0	-1.6	-4.3	0.0	0.9	1.1	0.9	0.5	-1.2	-3.0	-2.7	0.4	1.6	-1.7	-2.5	-2.2
Estonia	S840303Y	0.0	-2.4	0.1	3.2	0.0	-0.1	-0.5	-1.9	-1.9	-1.8	-2.6	-2.6	2.7	1.8	-0.3	-1.2	0.1	0.0
Ireland	S021923Y	-4.2	-5.1	-5.5	-4.9	-6.9	-2.5	-1.0	-1.7	-2.6	-2.7	-3.9	-1.2	6.1	11.6	27.5	9.9	4.5	2.5
Greece	S035677Y	-3.9	-3.4	-4.4	-4.3	-3.7	-2.0	-0.7	0.7	2.6	1.0	1.6	2.0	4.8	10.5	5.1	2.4	3.9	8.7
Spain	S217678Y	0.3	-0.7	-1.2	-2.2	-2.3	-2.5	-2.4	-2.0	-2.0	-3.1	-4.0	-3.6	2.9	9.3	7.7	7.0	7.6	3.7
France	S560580Y	0.5	-0.1	-0.7	-1.2	-1.4	-1.4	0.3	1.3	0.8	0.3	-0.2	0.0	0.4	5.0	4.6	2.5	2.3	2.0
Cyprus	S034201Y	0.8	2.6	1.1	1.3	-1.1	-1.1	1.2	3.0	0.8	-1.1	-2.1	-6.5	-3.8	3.6	3.0	4.0	3.2	2.0
Luxembourg	S833059Y	-1.6	-4.1	-3.8	-3.7	-6.3	-6.4	-2.4	-0.7	0.9	-0.2	-1.5	-3.9	-3.5	0.3	0.3	-0.7	-0.5	-0.6
Malta	S204693Y	5.8	4.7	6.5	3.3	2.2	3.1	2.3	5.8	1.1	-0.7	-0.7	-0.9	1.5	0.6	0.6	-0.3	0.2	-0.2
Netherlands	S333693Y	-3.4	-3.7	-3.8	-4.7	-5.6	-2.9	-0.7	0.6	-0.7	-2.1	-2.7	-2.4	-2.7	3.4	3.1	2.3	2.2	0.7
Austria	S255319Y	0.1	-1.8	-1.2	-1.1	-1.8	-3.3	-2.4	-1.4	1.6	-1.2	-1.2	-1.9	-1.7	1.3	1.8	-0.2	0.0	-1.0
Portugal	S753271Y	0.0	-0.1	0.8	0.2	0.3	1.8	0.6	1.0	1.4	4.0	1.8	0.2	0.6	7.3	7.0	0.3	2.1	0.6
Slovenia	S382743Y	-1.0	0.0	0.2	0.7	1.3	1.6	0.3	0.7	0.6	-0.1	0.0	-1.2	0.8	5.0	4.2	4.5	1.9	12.1
Slovakia	S569687Y	7.4	3.9	2.8	4.0	8.2	2.5	4.7	0.3	0.2	1.1	1.7	0.4	0.8	6.6	6.2	3.2	2.7	0.8
Finland	S392463Y	-0.8	-2.9	-5.2	-4.7	-9.8	-7.8	-6.3	-4.4	-4.0	-4.4	-5.6	-6.8	-5.8	1.3	1.4	-0.4	0.8	1.2
Euro area	S552039Y	-1.2	-2.1	-2.2	-2.5	-3.8	-1.8	-0.8	-0.2	-0.2	-0.5	-1.5	-2.3	-0.9	3.5	3.4	1.1	0.6	0.1
Euro area excluding Italy	S568861Y	-0.5	-1.1	-1.6	-2.1	-3.4	-1.5	-0.4	0.1	0.0	-0.5	-1.6	-2.1	-0.6	4.0	4.1	1.5	1.2	0.6
Bulgaria	S617276Y	-10.5	-8.1	-5.4	-3.8	-3.6	-5.3	-1.1	-1.8	-3.8	-2.7	-3.2	-2.3	-2.6	3.6	2.4	1.2	-0.1	0.7
Czech Republic	S257360Y	2.0	2.5	3.7	2.6	2.8	4.6	5.4	5.6	1.8	2.2	1.3	-0.4	1.2	4.5	3.3	1.8	2.7	0.1
Denmark	S643949Y	-3.6	-4.4	-4.5	-5.4	-5.9	-4.8	-3.4	-2.8	-4.4	-7.1	-6.8	-6.4	-4.7	0.9	0.9	0.1	2.2	-0.7
Croatia	3.3	4.1	5.2	2.0	1.9
Latvia	S012101Y	-1.0	-2.4	-0.7	3.2	1.8	1.1	1.6	0.9	0.3	-0.1	0.1	0.3	3.8	7.6	6.8	2.0	0.0	-0.7
Lithuania	S664938Y	2.4	11.0	1.9	1.4	1.5	2.0	0.6	0.0	0.6	-0.3	-0.3	0.3	2.6	8.2	5.4	3.7	1.4	0.5
Hungary	S790043Y	-4.7	-3.0	0.4	-1.6	-2.3	-0.6	4.9	3.2	2.0	3.8	5.5	1.0	-0.5	-0.1	0.2	-8.5	-2.2	-2.1
Poland	S535222Y	0.3	0.1	0.3	-0.6	0.0	2.1	2.1	3.2	2.6	1.3	1.0	-0.4	1.5	4.8	5.1	2.4	1.0	1.7
Romania	S958667Y	1.8	0.0	-0.7	-0.6	0.7	0.1	-0.5	-0.1	-0.3	-0.1	1.4	2.2	5.0	7.5	5.3	3.9	1.2	0.5
Sweden	S154449Y	-2.1	-3.6	-5.4	-4.8	-7.1	-4.3	-1.6	-1.0	-2.2	-3.8	-3.9	-5.3	-3.8	-0.2	-1.1	-1.2	-0.2	0.5
United Kingdom	S758368Y	0.7	-1.3	-3.3	-3.7	-6.2	-2.7	0.1	1.5	1.6	1.4	0.8	0.7	2.7	9.4	7.1	4.4	3.1	2.8
EU excluding euro area	S588601Y	-0.2	-1.6	-3.0	-3.4	-5.3	-2.3	0.2	1.2	0.7	0.2	-0.1	-0.5	1.2	6.5	4.9	2.6	2.1	1.7
EU	S052711Y	-1.0	-2.0	-2.4	-2.7	-4.2	-2.0	-0.5	0.2	0.0	-0.3	-1.1	-1.8	-0.3	4.2	3.8	1.5	1.0	0.5
EU excluding Italy	S833516Y	-0.4	-1.3	-2.0	-2.5	-4.0	-1.8	-0.3	0.4	0.2	-0.3	-1.1	-1.6	0.0	4.7	4.3	1.8	1.5	0.9
United States	S937176Y	-2.2	-3.3	-4.2	-4.1	-4.6	-2.3	1.3	2.4	2.1	0.8	-0.5	0.0	3.6	9.0	8.3	6.7	5.3
Japan	S480451Y	1.6	0.5	7.0	3.8	4.4	3.3	5.4	5.6	4.1	3.1	-0.5	0.2	-0.1	6.8	6.3	6.7	6.6
Canada	S790629Y	-6.2	-8.5	-8.3	-9.3	-9.9	-7.2	-5.7	-5.3	-5.8	-6.1	-6.0	-5.5	-3.5	0.9	1.3	0.2	0.0

Current account balance

(as a percentage of GDP)

		1996	1997	1998	1999	2000	2001	2002	2003	2004	2005	2006	2007	2008	2009	2010	2011	2012	2013
Italy	S302836Y	3.7	0.3	-0.4	-1.5	-1.3	-0.7	-0.1	1.0	0.5	0.8	-1.3	-2.1	-0.8	2.1	1.5	1.3	0.3	0.9
Belgium	S495829Y	1.6	-0.3	-1.6	-2.0	-2.6	-2.4	-1.9	-0.6	-1.5	-1.8	-2.1	-2.0	-1.0	2.9	1.8	1.4	1.2	0.9
Germany	S503822Y	0.5	0.2	-0.4	-1.2	-1.5	0.0	0.9	1.3	1.2	0.8	-0.7	-2.5	-2.4	0.4	0.7	-1.5	-2.2	-2.0
Estonia	S889781Y	-4.2	-6.7	-4.7	-0.9	-3.5	-4.3	-5.7	-6.0	-5.1	-5.3	-6.8	-7.6	-3.2	-2.0	-2.1	-3.3	-4.2	-3.3
Ireland	S076359Y	-1.6	-2.8	-4.2	-6.7	-7.8	-5.0	-3.4	-3.6	-4.6	-4.8	-6.1	-4.2	1.5	7.5	7.5	6.8	6.2	5.4
Greece	S091012Y	4.7	2.4	0.3	-0.6	0.1	0.1	0.6	1.8	3.1	2.7	3.7	4.1	6.4	11.9	9.0	8.8	4.9	0.9
Spain	S269349Y	1.2	-0.2	-1.1	-2.7	-3.1	-3.6	-4.0	-3.8	-4.3	-5.4	-6.7	-6.8	-0.6	5.3	4.6	5.4	4.5	4.9
France	S634691Y	0.1	0.0	-1.0	-2.0	-2.1	-2.0	-0.2	0.7	0.1	-0.3	-1.3	-1.1	-0.6	3.3	3.3	1.5	1.1	0.5
Cyprus	S105877Y	-0.4	1.1	0.8	1.2	-1.1	-1.1	0.9	2.6	0.7	-0.2	-2.5	-7.4	-4.9	0.7	0.1	1.9	2.7	1.8
Luxembourg	S902570Y	-7.1	-7.7	-8.6	-8.5	-10.7	-9.8	-8.1	-6.1	-4.5	-5.7	-6.5	-8.0	-7.5	-4.6	-4.6	-5.0	-4.6	-4.2
Malta	S240744Y	5.5	3.9	5.6	2.9	2.4	2.5	1.8	1.8	2.5	1.5	1.2	-0.4	2.1	1.7	1.8	1.3	1.9	0.8
Netherlands	S389165Y	-0.9	-1.6	-2.0	-3.4	-4.5	-3.5	-1.7	-0.7	-1.4	-2.8	-3.5	-3.4	-4.2	0.8	0.7	0.6	0.3	-0.4
Austria	S311892Y	-0.5	-1.9	-1.7	-1.3	-1.4	-3.2	-2.3	-1.4	-2.0	-1.4	-1.5	-2.6	-2.4	0.5	0.4	-0.9	-1.4	-1.3
Portugal	S817307Y	0.7	-0.6	-0.8	-1.2	-0.4	0.8	0.5	1.4	2.4	3.2	1.9	0.6	1.3	6.9	6.9	4.9	5.0	3.4
Slovenia	S430261Y	-3.0	-1.5	-2.3	-2.1	-0.8	-0.4	-1.4	-1.8	-2.2	-2.4	-2.7	-4.7	-3.6	1.0	1.0	1.3	0.4	0.8
Slovakia	S626945Y	-0.1	-0.9	-0.8	-0.9	0.3	1.4	1.9	-0.2	-0.3	-1.0	0.2	-0.7	-0.8	4.0	4.6	1.8	2.2	0.8
Finland	S435865Y	-0.7	-1.7	-4.5	-4.8	-9.4	-7.7	-6.8	-5.3	-5.2	-5.3	-6.3	-7.7	-6.8	-0.5	0.0	-1.8	-0.8	-0.6
Euro area	S901582Y	1.0	-0.1	-0.9	-1.9	-2.2	-1.6	-0.6	0.1	-0.3	-0.7	-2.0	-2.6	-1.3	2.6	2.3	1.1	0.4	0.3
Euro area excluding Italy	S794756Y	0.4	-0.2	-1.0	-1.9	-2.4	-1.7	-0.8	-0.1	-0.5	-1.0	-2.1	-2.7	-1.5	2.6	2.4	1.1	0.5	0.2
Bulgaria	S667461Y	10.6	-2.5	-5.6	-4.2	-3.3	-4.7	-2.7	-2.9	-5.3	-4.6	-5.3	-7.9	-6.3	0.4	-0.3	-0.4	-1.5	-0.7
Czech Republic	S315925Y	-4.6	-4.2	-4.1	-3.1	-2.3	-2.4	-1.9	-1.3	-3.8	-3.5	-3.5	-4.4	-3.2	0.9	0.6	-0.5	-1.1	-1.5
Denmark	S705252Y	-0.1	-1.4	-1.9	-3.1	-4.0	-3.0	-1.9	-1.6	-3.5	-6.7	-6.8	-6.5	-5.5	0.5	0.1	-0.7	-0.5	-1.6
Croatia	0.4	0.9	2.2	2.1	1.2
Latvia	S056777Y	-2.1	-1.7	-2.2	0.3	-0.2	-1.3	-1.0	-1.1	-2.7	-3.5	-5.4	-5.5	-0.4	4.4	3.7	-0.2	-2.0	-1.7
Lithuania	S714466Y	-1.7	-3.3	-0.7	-0.6	-1.6	-0.7	-1.7	-1.8	-2.0	-2.5	-3.1	-3.6	-1.0	6.6	4.8	2.9	1.5	0.3
Hungary	S859296Y	0.3	1.0	0.6	0.8	-2.6	-2.0	0.5	2.1	2.1	3.2	4.0	0.4	0.2	1.7	2.3	2.4	0.0	0.3
Poland	S615623Y	0.0	0.0	-0.6	-1.6	0.1	1.2	1.0	1.8	1.5	0.2	-0.7	-2.5	-1.3	1.8	2.7	0.6	0.2	1.2
Romania	S018706Y	-0.9	1.2	0.4	1.3	0.3	-0.5	-2.4	-3.3	-3.4	-3.4	-4.3	-3.6	-1.2	3.0	0.9	-1.8	-2.0	-2.5
Sweden	S236464Y	-0.1	-1.9	-2.9	-4.1	-6.3	-4.4	-1.9	-1.9	-3.5	-5.3	-5.5	-6.7	-5.4	-2.8	-3.7	-3.6	-2.7	-2.1
United Kingdom	S816979Y	2.0	0.5	-1.5	-2.5	-2.7	-2.4	0.1	1.2	1.2	1.1	0.3	0.3	1.6	6.7	6.6	4.8	5.2	3.5
EU excluding euro area	S875774Y	1.1	-0.1	-1.6	-2.6	-2.9	-2.3	-0.3	0.5	0.1	-0.5	-1.2	-1.5	-0.5	3.9	3.7	2.2	2.4	1.5
EU	S111851Y	1.0	-0.1	-1.1	-2.0	-2.4	-1.7	-0.5	0.2	-0.2	-0.6	-1.8	-2.3	-1.1	2.9	2.6	1.4	1.0	0.6
EU excluding Italy	S899034Y	0.6	-0.2	-1.2	-2.1	-2.5	-1.9	-0.6	0.1	-0.3	-0.9	-1.8	-2.4	-1.2	3.0	2.8	1.4	1.1	0.6
United States	S982684Y	-0.5	-1.7	-2.8	-3.3	-4.1	-2.0	1.1	2.1	1.7	0.3	-0.6	-0.3	2.7	7.6	7.5	6.4	5.4
Japan	S527186Y	-3.0	-3.1	-1.5	-0.1	0.0	-0.3	1.8	2.2	2.4	1.1	-0.4	-0.6	0.1	5.8	5.4	5.3	4.9
Canada	S841805Y	-0.4	-2.9	-2.9	-4.4	-5.7	-3.7	-3.1	-3.2	-4.4	-5.3	-5.5	-5.3	-3.7	-0.2	0.0	-0.7	-1.1

Capital account balance

(as a percentage of GDP)

		1996	1997	1998	1999	2000	2001	2002	2003	2004	2005	2006	2007	2008	2009	2010	2011	2012	2013
Italy	S310569Y	3.3	2.4	3.1	3.4	2.2	3.9	3.2	2.7	3.1	3.7	4.7	3.7	3.5	3.4	3.0	2.4	2.7	2.1
Belgium	S501937Y	2.4	2.6	2.5	2.6	2.7	2.0	2.0	0.8	1.7	4.3	1.8	2.0	2.0	2.6	2.0	2.5	2.8	1.7
Germany	S510830Y	2.8	2.6	2.7	2.8	0.4	3.1	2.9	2.8	2.5	2.5	2.3	2.2	2.5	2.7	3.5	2.4	2.1	2.0
Estonia	S895450Y	4.6	4.5	5.4	4.4	3.8	4.3	5.4	4.3	3.5	3.7	4.3	5.2	6.2	3.9	2.0	2.2	4.4	3.5
Ireland	S085742Y	1.9	1.8	2.0	4.1	3.0	4.1	3.8	3.2	3.1	3.2	3.2	4.1	5.9	6.2	23.2	6.3	2.0	1.8
Greece	S099465Y	2.0	3.6	3.6	3.7	3.6	4.4	4.2	3.9	4.5	2.8	2.2	2.4	3.4	3.8	1.9	0.8	4.0	11.8
Spain	S275886Y	4.3	4.2	4.2	4.0	4.0	4.1	4.3	4.1	4.4	4.1	4.3	4.8	5.1	5.8	5.0	4.2	6.1	2.2
France	S641997Y	3.9	3.3	3.6	3.8	3.6	3.7	3.5	3.3	3.5	3.2	3.7	3.8	4.0	4.1	3.7	3.7	3.7	3.8
Cyprus	S117378Y	3.6	3.9	3.4	3.1	3.4	3.4	3.5	4.0	3.5	2.6	3.7	3.9	3.9	5.4	5.2	4.5	3.7	3.7
Luxembourg	S908998Y	5.9	4.0	5.3	5.1	4.7	3.7	6.0	5.7	5.6	5.7	5.1	4.4	4.3	5.2	5.4	4.8	4.6	4.1
Malta	S245890Y	2.4	3.5	4.0	4.0	3.4	3.8	3.9	7.2	2.1	1.4	1.5	2.7	2.5	2.0	1.6	1.4	1.4	2.0
Netherlands	S399282Y	2.8	2.8	2.8	3.0	2.5	3.7	3.8	3.8	3.2	3.1	2.9	3.2	3.7	4.8	4.5	3.7	3.8	2.9
Austria	S322146Y	4.5	3.7	4.1	3.5	3.1	3.3	3.0	2.9	6.4	3.1	3.0	3.4	3.3	3.6	4.1	3.4	4.0	2.8
Portugal	S826093Y	4.1	4.3	4.7	4.3	3.7	4.0	2.8	2.2	1.6	3.3	2.7	2.5	2.4	3.2	2.9	-0.6	1.4	1.5
Slovenia	S437665Y	4.1	3.8	4.6	5.1	4.5	4.4	3.9	4.4	4.4	3.9	4.1	4.8	5.4	5.4	4.9	5.1	3.6	13.9
Slovakia	S633950Y	10.1	7.2	6.1	8.3	12.0	5.1	6.3	3.0	2.7	3.8	2.9	2.5	2.9	4.1	2.9	2.9	2.3	1.9
Finland	S442951Y	4.1	3.0	2.8	3.1	2.4	2.6	2.6	2.6	2.7	2.5	2.2	2.4	2.4	2.9	2.5	2.5	2.6	2.7
Euro area	S922729Y	3.3	3.0	3.2	3.4	2.3	3.5	3.3	3.1	3.2	3.2	3.3	3.3	3.5	3.8	3.9	3.0	3.3	2.7
Euro area excluding Italy	S606672Y	3.4	3.1	3.3	3.3	2.3	3.4	3.3	3.1	3.2	3.1	3.0	3.2	3.5	3.9	4.1	3.1	3.4	2.9
Bulgaria	S675961Y	0.6	1.7	4.4	4.1	3.9	3.6	3.9	3.3	3.4	3.5	3.4	6.8	4.6	3.9	3.5	2.4	2.3	2.3
Czech Republic	S321758Y	7.7	7.8	8.9	6.7	5.9	8.0	8.4	8.0	6.7	6.7	5.9	5.2	5.4	4.9	4.1	3.7	5.3	2.9
Denmark	S716392Y	2.1	2.0	1.9	1.8	1.7	1.5	1.6	1.5	1.5	1.5	1.6	1.7	2.2	2.1	2.5	2.6	4.3	2.5
Croatia	4.9	5.4	5.7	2.9	3.7
Latvia	S065445Y	2.6	0.3	2.1	3.5	3.0	3.3	3.3	2.7	3.7	3.9	6.0	6.1	4.7	4.7	4.5	3.7	3.4	2.7
Lithuania	S721074Y	4.9	15.1	3.7	3.4	4.7	4.3	3.5	3.1	3.6	3.0	3.5	4.6	4.3	2.8	2.4	2.6	1.8	1.9
Hungary	S868450Y	4.1	4.9	7.3	4.7	5.6	6.1	8.5	5.2	4.4	4.7	5.4	4.7	3.5	3.0	2.0	-6.7	2.1	1.8
Poland	S625092Y	4.9	4.6	4.9	3.9	3.0	4.1	4.0	4.4	3.8	3.8	4.3	4.3	5.0	5.7	5.1	4.5	3.6	3.1
Romania	S025924Y	4.5	3.2	2.8	3.1	4.3	4.0	4.4	4.8	4.6	4.5	6.5	6.5	6.9	6.0	5.9	7.3	5.0	4.8
Sweden	S244717Y	3.3	3.4	2.2	3.2	2.7	2.8	3.1	3.0	2.9	3.1	3.1	3.1	3.2	3.5	3.4	3.5	3.3	3.2
United Kingdom	S825520Y	2.2	1.6	1.6	1.6	-0.8	1.9	2.0	2.3	2.3	2.3	2.5	2.5	3.4	4.7	3.4	2.8	0.9	2.3
EU excluding euro area	S615058Y	2.8	2.4	2.3	2.2	0.5	2.5	2.7	2.8	2.7	2.8	3.0	3.0	3.8	4.5	3.7	3.0	2.2	2.6
EU	S116032Y	3.2	2.8	3.0	3.1	1.8	3.3	3.1	3.0	3.1	3.1	3.3	3.2	3.5	3.9	3.9	3.0	3.0	2.7
EU excluding Italy	S908384Y	3.2	2.9	3.0	3.0	1.8	3.2	3.1	3.0	3.1	3.0	3.0	3.2	3.6	4.0	4.0	3.1	3.0	2.8
United States	S992338Y	3.5	3.3	3.2	3.3	3.3	3.4	3.7	3.8	3.8	3.8	3.6	3.8	4.4	5.1	4.5	4.2	3.7
Japan	S548060Y	7.9	6.8	11.9	7.2	7.5	6.3	5.9	5.5	3.5	3.7	1.7	2.7	1.8	3.1	2.9	3.5	3.8
Canada	S850720Y	3.1	2.6	2.6	2.6	2.8	3.0	3.1	3.2	3.4	3.6	3.7	3.8	4.0	4.8	4.9	4.5	4.4

Public Finance Statistics in the European Union

Table 5
TUEE0140

Gross public debt

(as a percentage of GDP)

		1996	1997	1998	1999	2000	2001	2002	2003	2004	2005	2006	2007	2008	2009	2010	2011	2012	2013
Italy	S164287Y	120.2	117.5	114.3	113.1	108.6	108.3	105.4	104.1	103.7	105.7	106.3	103.3	106.1	116.4	119.3	120.7	127.0	132.6
Belgium	S381161Y	127.2	122.5	117.2	113.6	107.8	106.5	103.4	98.4	94.0	92.0	87.9	84.0	89.2	95.7	96.6	99.2	101.1	101.5
Germany	S383684Y	58.5	59.8	60.5	61.3	60.2	59.1	60.7	64.4	66.2	68.6	68.0	65.2	66.8	74.5	82.5	80.0	81.0	78.4
Estonia	S780619Y	7.6	7.0	6.0	6.5	5.1	4.8	5.7	5.6	5.0	4.6	4.4	3.7	4.5	7.1	6.7	6.1	9.8	10.0
Ireland	S950832Y	72.1	63.6	53.0	47.0	37.0	34.5	31.8	31.0	29.4	27.2	24.6	24.9	44.2	64.4	91.2	104.1	117.4	123.7
Greece	S964495Y	100.3	97.5	95.4	94.9	104.4	104.7	102.6	98.3	99.8	110.0	107.8	107.3	112.9	129.7	148.3	170.3	157.2	175.1
Spain	S152268Y	67.5	66.2	64.2	62.4	59.4	55.6	52.6	48.8	46.3	43.2	39.7	36.3	40.2	54.0	61.7	70.5	86.0	93.9
France	S495862Y	58.1	59.5	59.6	59.0	57.5	57.1	59.1	63.3	65.2	66.8	64.1	64.2	68.2	79.2	82.7	86.2	90.6	93.5
Cyprus	S927219Y	53.1	57.4	59.2	59.3	59.6	61.2	65.1	69.7	70.9	69.4	64.7	58.8	48.9	58.5	61.3	71.5	86.6	111.7
Luxembourg	S767900Y	7.4	7.4	7.1	6.4	6.2	6.3	6.3	6.2	6.4	6.1	6.7	6.7	14.4	15.5	19.5	18.7	21.7	23.1
Malta	S155247Y	38.6	46.7	51.8	55.2	53.9	58.9	57.9	66.0	69.8	68.0	62.5	60.7	60.9	66.5	66.0	68.8	70.8	73.0
Netherlands	S289714Y	74.1	68.2	65.7	61.1	53.8	50.7	50.5	52.0	52.4	51.8	47.4	45.3	58.5	60.8	63.4	65.7	71.3	73.5
Austria	S182377Y	68.1	64.1	64.4	66.8	66.2	66.8	66.2	65.3	64.7	64.2	62.3	60.2	63.8	69.2	72.5	73.1	74.4	74.5
Portugal	S694495Y	58.2	55.5	51.8	51.4	50.7	53.8	56.8	59.4	61.9	67.7	69.4	68.4	71.7	83.7	94.0	108.2	124.1	129.0
Slovenia	S331933Y	21.9	22.4	23.1	24.1	26.3	26.5	27.8	27.2	27.3	26.7	26.4	23.1	22.0	35.2	38.7	47.1	54.4	71.7
Slovakia	S511562Y	31.1	33.7	34.5	47.8	50.3	48.9	43.4	42.4	41.5	34.2	30.5	29.6	27.9	35.6	41.0	43.6	52.7	55.4
Finland	S329985Y	57.0	53.9	48.4	45.7	43.8	42.5	41.5	44.5	44.4	41.7	39.6	35.2	33.9	43.5	48.8	49.3	53.6	57.0
<i>Euro area</i>	S632925Y	74.0	73.7	72.5	71.7	69.3	68.3	68.1	69.3	69.7	70.6	68.7	66.4	70.2	80.0	85.6	87.5	90.8	92.7
<i>Euro area excluding Italy.</i>	S642131Y	64.5	64.2	63.5	62.9	60.9	59.6	60.1	61.8	62.4	63.1	60.8	58.7	62.8	72.5	78.8	80.9	84.1	85.5
Bulgaria	S566576Y	108.3	77.6	77.6	72.5	66.0	52.4	44.4	37.0	27.5	21.6	17.2	13.7	14.6	16.2	16.3	18.4	18.9
Czech Republic	S191451Y	11.9	12.6	14.5	15.8	17.8	23.9	27.1	28.6	28.9	28.4	28.3	27.9	28.7	34.6	38.4	41.4	46.2	46.0
Denmark	S576514Y	69.4	65.4	61.4	58.1	52.4	49.6	49.5	47.2	45.1	37.8	32.1	27.1	33.4	40.7	42.8	46.4	45.4	44.5
Croatia	46.1	46.9	48.1	45.7	46.0
Latvia	S960776Y	14.0	11.1	9.3	12.4	12.4	14.1	13.6	14.7	15.0	12.5	10.7	9.0	19.8	36.9	44.5	42.0	40.8	38.1
Lithuania	S608676Y	13.8	15.4	16.5	22.7	23.6	23.0	22.2	21.0	19.3	18.3	17.9	16.8	15.5	29.3	37.8	38.3	40.5	39.4
Hungary	S713412Y	72.4	62.9	60.9	60.8	56.1	52.7	55.9	58.6	59.5	61.7	65.9	67.0	73.0	79.8	82.2	82.1	79.8	79.2
Poland	S468039Y	43.4	42.9	38.9	39.6	36.8	37.6	42.2	47.1	45.7	47.1	47.7	45.0	47.1	50.9	54.9	56.2	55.6	57.0
Romania	S884859Y	10.6	15.0	16.8	21.7	22.5	25.7	24.9	21.5	18.7	15.8	12.4	12.8	13.4	23.6	30.5	34.7	38.0	38.4
Sweden	S080151Y	73.3	71.2	69.9	64.3	53.9	54.7	52.5	51.7	50.3	50.4	45.2	40.2	38.8	42.6	39.4	38.6	38.3	40.6
United Kingdom	S700901Y	49.9	48.7	45.8	43.0	40.5	37.3	37.1	38.7	40.3	41.7	42.7	43.7	51.9	67.1	78.4	84.3	89.1	90.6
<i>EU excluding euro area.</i>	S670973Y	52.7	51.1	48.0	45.6	42.0	39.7	39.8	41.1	41.6	41.8	41.3	40.6	45.6	56.2	63.5	67.0	70.3	71.2
<i>EU.</i>	S978342Y	69.5	68.3	66.5	65.2	62.1	60.8	60.7	62.1	62.4	62.9	61.3	59.3	63.8	74.2	79.9	82.2	85.3	86.9
<i>EU excluding Italy.</i>	S771253Y	61.5	60.6	59.1	57.9	55.1	53.6	53.9	55.7	56.1	56.6	54.8	53.1	57.7	67.9	74.3	76.8	79.9	81.1
United States	S899643Y	67.6	65.3	62.1	58.6	52.7	52.7	55.1	58.3	65.2	64.6	63.4	63.8	72.6	85.8	94.6	98.8	102.1	104.3
Japan	S979763Y	95.1	101.7	113.8	127.9	136.1	144.4	153.5	158.3	166.3	169.5	166.8	162.4	171.1	188.7	193.3	209.5	216.5	224.6
Canada	S267719Y	109.4	103.1	101.6	92.2	84.2	85.7	84.8	80.3	76.5	75.8	74.9	70.4	74.7	87.4	89.5	93.6	96.1	93.6

Total revenue (Regulation EC 1500/2000)

(as a percentage of GDP)

		1996	1997	1998	1999	2000	2001	2002	2003	2004	2005	2006	2007	2008	2009	2010	2011	2012	2013
Italy	S347697Y	45.2	47.2	46.0	45.9	45.0	44.5	44.0	44.4	44.0	43.4	45.0	46.0	45.9	46.5	46.1	46.1	47.7	47.7
Italy - Traditional account	S334938Y	45.4	47.4	46.1	45.9	45.1	44.7	44.1	44.7	44.3	43.9	45.5	46.5	46.5	47.1	46.7	46.5	48.1	48.2
Belgium	S510269Y	48.4	48.9	49.4	49.5	49.0	49.5	49.6	50.9	48.9	49.3	48.8	48.1	48.7	48.1	48.7	49.6	51.0	52.0
Germany	S518793Y	45.7	45.5	45.7	46.6	46.2	44.5	44.1	44.3	43.3	43.6	43.7	43.7	44.0	45.2	43.7	44.3	44.8	44.7
Estonia	S908676Y	39.1	39.6	38.5	36.7	35.9	34.7	36.0	36.5	35.6	35.2	36.1	36.4	36.7	42.8	40.7	38.7	39.2	38.1
Ireland	S101502Y	38.9	38.1	36.8	36.6	36.1	34.2	33.2	33.7	35.1	35.6	37.4	36.9	35.4	34.5	34.9	34.0	34.5	35.9
Greece	S105280Y	37.8	39.3	40.9	41.8	43.4	41.3	40.6	39.4	38.4	39.0	39.2	40.7	40.7	38.3	40.4	42.2	44.4	45.8
Spain	S282326Y	37.7	37.6	38.1	38.6	38.2	38.1	38.6	38.1	38.8	39.7	40.7	41.1	36.9	35.1	36.7	36.2	37.2	37.8
France	S656471Y	50.5	50.9	50.1	50.8	50.2	50.0	49.6	49.3	49.6	50.6	50.6	49.9	49.9	49.2	49.5	50.7	51.8	52.8
Cyprus	S127832Y	32.2	31.4	32.5	32.3	34.7	35.7	35.6	38.0	38.3	40.7	41.4	44.8	43.1	40.1	40.9	39.9	39.4	40.3
Luxembourg	S916135Y	42.3	44.3	44.4	42.6	43.6	44.2	43.6	42.3	41.5	41.5	39.9	39.9	42.3	44.5	42.8	42.7	44.0	43.6
Malta	S250523Y	33.1	34.0	32.1	34.7	33.7	35.0	35.9	36.6	39.0	40.7	40.4	39.5	38.7	38.8	37.7	38.6	39.9	41.1
Netherlands	S408394Y	47.5	46.3	45.8	46.4	46.1	45.1	44.1	43.9	44.3	44.5	46.1	45.4	46.7	45.8	46.3	45.6	46.4	47.3
Austria	S333625Y	51.7	51.5	51.2	51.0	50.1	51.1	49.8	49.7	49.2	48.2	47.5	47.6	48.3	48.5	48.3	48.3	49.1	49.7
Portugal	S834253Y	37.6	37.9	37.6	38.4	38.3	38.3	39.6	40.9	41.4	40.1	40.6	41.1	41.1	39.6	41.6	45.0	40.9	43.7
Slovenia	S447376Y	43.0	42.2	43.0	43.1	42.8	43.4	43.8	43.6	43.4	43.6	43.0	42.2	42.2	42.3	43.6	43.5	44.4	44.7
Slovakia	S639431Y	43.8	42.6	40.5	40.7	39.9	38.0	36.8	37.4	35.3	35.2	33.3	32.4	32.8	33.5	32.3	34.1	33.7	35.9
Finland	S449138Y	56.7	55.3	54.6	53.4	55.4	53.1	53.2	52.8	52.5	53.0	53.3	52.7	53.6	53.4	53.0	54.1	54.5	56.0
Euro area	S694022Y	46.2	46.4	46.1	46.5	46.1	45.2	44.8	44.8	44.5	44.8	45.3	45.3	45.0	44.9	44.8	45.4	46.3	46.8
Euro area excluding Italy	S718663Y	46.3	46.2	46.1	46.7	46.3	45.4	45.0	44.9	44.7	45.1	45.3	45.2	44.8	44.6	44.6	45.2	46.0	46.6
Bulgaria	S686662Y	37.8	34.8	39.6	40.1	40.7	41.7	38.4	38.7	40.4	38.3	36.2	40.4	40.1	37.1	34.3	33.6	35.0	37.2
Czech Republic	S326105Y	38.5	39.0	38.1	38.6	38.0	38.3	39.1	43.3	40.4	39.8	39.6	40.3	38.9	38.9	39.1	40.0	40.3	40.9
Denmark	S724813Y	56.9	56.1	56.2	56.8	55.8	55.4	54.8	55.0	56.4	57.8	56.6	55.6	54.8	55.3	55.0	55.7	55.5	56.2
Croatia	40.8	40.6	40.3	40.8	41.0
Latvia	S072093Y	36.6	37.6	39.1	37.8	34.8	33.0	33.7	33.3	34.8	35.4	37.7	35.3	34.7	34.5	35.3	34.9	35.1	35.1
Lithuania	S727933Y	33.1	38.5	38.1	38.0	36.6	33.9	33.5	32.5	32.5	33.5	33.7	34.3	34.6	35.5	35.0	33.2	32.7	32.3
Hungary	S878970Y	46.9	44.3	43.6	44.0	44.7	43.7	42.5	42.4	42.6	42.2	42.7	45.6	45.5	46.9	45.6	54.3	46.6	47.6
Poland	S634064Y	46.1	41.8	40.1	40.4	38.1	38.5	39.3	38.5	37.2	39.4	40.2	40.3	39.5	37.2	37.5	38.4	38.3	37.5
Romania	S031462Y	29.6	30.2	32.5	34.8	33.9	32.7	33.0	32.0	32.3	32.4	33.3	35.3	33.6	32.1	33.3	33.9	33.7	32.7
Sweden	S260619Y	59.6	59.0	59.7	58.9	58.7	56.1	54.1	54.4	54.6	55.8	54.9	54.5	53.9	54.0	52.3	51.5	51.2	51.5
United Kingdom	S832983Y	37.3	37.7	38.8	39.4	39.9	40.3	38.8	38.4	39.1	40.0	40.8	40.5	42.1	39.6	39.8	40.3	42.0	41.3
EU excluding euro area	S732643Y	42.9	42.0	42.6	43.0	42.9	42.6	41.5	41.4	41.8	42.5	42.9	42.7	43.4	41.8	41.9	42.5	43.1	42.8
EU	S122513Y	45.5	45.4	45.2	45.7	45.2	44.6	43.9	44.0	43.8	44.2	44.6	44.6	44.6	44.1	44.1	44.6	45.4	45.7
EU excluding Italy	S916551Y	45.5	45.1	45.1	45.6	45.3	44.6	43.9	43.9	43.8	44.3	44.6	44.4	44.4	43.8	43.8	44.4	45.1	45.5
United States	S000863Y	33.4	33.7	34.0	34.0	34.5	33.6	31.3	30.7	30.9	32.2	33.2	33.3	31.9	30.2	30.6	30.9	30.8
Japan	S559225Y	31.5	31.5	31.2	31.1	31.3	32.0	30.6	30.2	30.7	31.6	34.7	33.7	35.1	33.1	32.4	33.1	33.3
Canada	S861325Y	42.4	43.0	42.9	42.8	42.6	41.1	39.6	39.5	39.2	39.3	39.7	39.3	38.1	38.2	37.4	37.3	37.2

Current revenue (Regulation EC 1500/2000)

(as a percentage of GDP)

Paesi	1996	1997	1998	1999	2000	2001	2002	2003	2004	2005	2006	2007	2008	2009	2010	2011	2012	2013
Italy S187164Y	44.8	46.3	45.3	45.4	44.5	44.2	43.5	42.8	43.1	43.0	44.7	45.8	45.7	45.4	45.7	45.4	47.3	47.2
Italy - Traditional account S352890Y	45.0	46.4	45.4	45.4	44.6	44.4	43.7	43.1	43.4	43.4	45.2	46.2	46.2	46.0	46.3	45.9	47.7	47.6
Belgium S396251Y	47.9	48.3	48.9	48.8	48.5	48.9	49.1	48.4	48.1	48.3	48.0	47.4	48.0	47.4	47.9	48.7	50.0	50.8
Germany S397653Y	45.3	45.0	45.2	46.2	45.8	44.1	43.7	43.9	42.9	43.1	43.3	43.3	43.6	44.8	43.3	43.9	44.4	44.3
Estonia S792886Y	38.8	39.3	38.1	36.4	35.5	34.6	35.7	36.1	35.3	34.9	35.3	35.6	36.3	41.1	39.3	37.3	37.3	36.7
Ireland S965736Y	37.3	36.3	35.2	35.0	34.6	33.0	31.9	32.4	33.9	34.4	36.0	35.3	34.2	33.4	33.9	33.4	33.9	35.2
Greece S984999Y	35.8	37.4	38.7	39.6	40.5	39.8	39.4	37.7	36.8	37.4	36.7	38.1	38.4	36.9	38.3	39.8	41.9	42.4
Spain S170453Y	37.1	37.1	37.3	37.7	37.6	37.4	37.8	37.3	37.9	38.9	40.0	40.6	36.6	35.1	36.6	36.2	37.0	37.4
France S512587Y	50.2	50.1	49.9	50.5	49.8	49.8	49.2	48.8	49.1	49.6	50.1	49.5	49.7	49.0	49.3	50.4	51.5	52.5
Cyprus S944076Y	32.1	31.3	32.4	32.3	34.6	35.6	35.5	37.9	37.5	39.7	41.3	44.8	43.0	40.0	40.8	39.9	39.3	40.3
Luxembourg S786325Y	42.2	44.1	44.2	42.4	43.4	44.1	43.5	42.0	41.2	41.3	39.8	39.7	42.1	44.3	42.5	42.6	43.7	43.4
Malta S167973Y	31.2	33.0	31.2	33.6	32.6	34.6	35.5	36.1	37.1	37.2	37.2	38.2	37.9	37.8	36.0	36.8	37.7	38.9
Netherlands S306512Y	47.0	46.0	45.4	46.0	45.7	44.7	43.7	43.6	44.0	44.1	45.7	45.1	46.4	45.5	46.0	45.3	46.1	47.0
Austria S206857Y	51.6	51.3	51.1	50.8	49.9	50.9	49.6	49.4	49.0	48.0	47.3	47.4	48.2	48.4	48.2	48.2	49.0	49.4
Portugal S712292Y	36.3	36.2	36.4	37.3	37.4	36.9	38.1	38.5	38.1	38.7	39.7	40.4	40.4	38.9	38.8	40.5	39.4	42.8
Slovenia S343032Y	42.9	42.0	42.7	42.9	42.6	43.1	43.6	43.4	43.3	43.5	42.8	41.9	42.1	42.2	43.5	43.5	44.3	44.3
Slovakia S531046Y	43.7	42.6	40.4	40.5	39.8	37.8	36.7	37.3	35.1	35.2	33.3	32.2	32.6	33.1	31.7	33.4	32.9	35.2
Finland S346559Y	56.4	55.0	54.3	53.1	55.0	52.7	52.7	52.4	52.1	52.6	52.9	52.4	53.1	53.0	52.6	53.7	54.1	55.6
Euro area S757500Y	45.7	45.8	45.6	46.0	45.6	44.8	44.3	44.0	43.9	44.1	44.8	44.8	44.6	44.4	44.4	44.9	45.8	46.3
Euro area excluding Italy . S777444Y	45.9	45.6	45.6	46.2	45.8	45.0	44.5	44.3	44.0	44.4	44.8	44.6	44.4	44.2	44.2	44.8	45.5	46.2
Bulgaria S581912Y	37.6	34.7	39.5	39.9	40.6	41.5	38.2	38.6	40.2	38.0	35.8	38.9	38.9	35.9	32.8	32.3	33.3	34.9
Czech Republic S213183Y	38.4	38.9	38.0	38.5	37.9	38.0	38.9	39.9	40.1	39.4	39.0	39.5	38.2	37.5	37.6	38.6	39.2	39.9
Denmark S591689Y	56.5	55.6	55.8	56.2	55.3	54.9	54.2	54.5	55.6	57.2	55.9	55.0	54.2	54.8	54.5	54.8	55.0	55.7
Croatia	40.7	40.4	40.0	39.9	40.8
Latvia S978257Y	35.9	35.9	37.6	37.0	34.1	32.8	33.4	33.2	34.3	34.3	36.6	34.6	33.8	33.4	33.8	33.3	33.4	33.5
Lithuania S625045Y	33.1	38.5	38.1	37.9	36.5	33.8	33.0	32.1	32.0	32.7	32.7	32.8	33.5	33.8	32.4	30.9	30.7	30.6
Hungary S736818Y	46.5	44.0	43.2	43.6	44.3	43.2	42.0	42.0	42.2	41.5	41.8	44.7	44.9	45.4	42.8	41.7	43.8	44.3
Poland S489353Y	42.6	41.8	40.1	40.4	38.1	38.5	39.3	38.4	37.2	38.8	39.7	39.8	39.1	36.6	36.3	36.6	37.0	36.5
Romania S903388Y	29.6	30.2	32.5	34.8	33.8	32.6	32.9	31.9	31.9	32.1	33.2	34.1	32.8	31.8	32.6	33.2	32.8	32.1
Sweden S100540Y	59.4	58.8	59.5	58.7	58.5	55.9	53.9	54.2	54.4	55.7	54.9	54.4	53.8	53.9	52.2	51.4	50.8	51.2
United Kingdom S713235Y	37.1	37.4	38.6	39.2	39.7	40.0	38.5	38.0	38.8	39.6	40.4	40.1	40.3	39.2	39.6	40.1	39.9	41.0
EU excluding euro area . . S800323Y	42.4	41.8	42.3	42.8	42.7	42.3	41.2	41.0	41.5	42.1	42.5	42.3	42.1	41.3	41.3	41.6	41.5	42.2
EU S999966Y	45.0	44.8	44.8	45.2	44.8	44.2	43.5	43.2	43.2	43.6	44.2	44.1	44.0	43.7	43.6	44.0	44.7	45.2
EU excluding Italy S791068Y	45.0	44.6	44.7	45.2	44.8	44.2	43.5	43.3	43.3	43.7	44.1	43.9	43.7	43.4	43.3	43.8	44.3	45.0
United States S893334Y	33.2	33.4	33.7	33.6	34.1	33.2	31.0	30.4	30.6	32.0	32.9	33.1	31.7	30.1	30.5	30.8	30.7
Japan S424961Y	30.4	31.9	32.3	32.7	30.8	30.8	32.0
Canada S747203Y

Tax revenue and social security contributions

(as a percentage of GDP)

	1996	1997	1998	1999	2000	2001	2002	2003	2004	2005	2006	2007	2008	2009	2010	2011	2012	2013
Italy S276937Y	41.4	43.4	42.2	41.9	41.3	41.0	40.5	41.0	40.4	40.1	41.7	42.7	42.6	43.0	42.6	42.5	44.0	43.8
Belgium S473018Y	45.5	46.0	46.6	46.7	46.3	46.4	46.7	46.1	46.3	46.2	45.9	45.4	45.7	45.1	45.5	46.0	47.3	48.4
Germany S476444Y	41.1	41.1	41.4	42.4	42.2	40.4	40.0	40.2	39.4	39.4	39.6	39.7	39.8	40.6	39.1	39.6	40.2	40.2
Estonia S867040Y	34.3	34.3	34.1	32.6	31.0	30.3	31.1	30.8	30.4	30.4	30.4	31.2	31.6	35.2	33.8	32.1	32.4	32.2
Ireland S048567Y	33.7	33.1	32.2	32.4	32.0	30.4	29.4	29.9	31.3	31.7	33.2	32.6	30.7	29.5	29.3	29.4	30.0	31.5
Greece S066905Y	30.9	32.2	34.0	35.2	36.4	35.1	35.6	34.1	33.5	34.1	33.1	34.0	33.9	32.6	33.6	34.7	36.5	36.1
Spain S248527Y	33.6	33.8	34.2	34.7	34.9	34.5	35.1	34.9	35.7	36.8	37.7	38.1	34.0	32.3	33.8	33.4	34.1	34.6
France S596440Y	45.4	45.6	45.6	46.4	45.6	45.4	44.8	44.7	45.1	45.5	45.8	45.1	45.0	44.2	44.6	45.8	47.0	48.0
Cyprus S077842Y	26.4	25.9	27.6	27.8	30.0	30.7	30.9	32.2	32.7	34.8	35.5	39.9	38.4	35.1	35.4	35.1	34.5	35.1
Luxembourg S867583Y	37.9	39.7	39.8	38.7	39.5	40.2	39.9	38.8	38.0	38.3	36.5	36.3	38.2	40.7	39.0	39.1	40.3	40.2
Malta S222615Y	25.6	27.8	26.1	28.2	28.4	30.3	31.4	31.8	32.5	33.9	34.1	34.8	33.9	34.5	33.0	33.7	34.5	35.5
Netherlands S360001Y	40.5	39.8	39.7	40.6	40.1	38.7	38.2	37.9	38.0	38.1	39.3	38.9	39.4	38.6	39.3	38.8	39.2	39.9
Austria S283614Y	44.4	45.6	45.7	45.3	44.5	46.3	45.0	44.9	44.4	43.4	42.8	43.0	44.0	43.9	43.6	43.7	44.5	45.2
Portugal S788320Y	31.8	31.8	32.1	32.8	33.1	32.9	33.8	34.3	33.5	34.7	35.3	35.6	35.7	34.2	34.5	35.9	34.6	37.6
Slovenia S410866Y	38.1	37.0	37.8	38.1	37.5	37.8	38.1	38.3	38.3	38.7	38.3	37.6	37.3	37.2	37.8	37.2	37.6	37.7
Slovakia S603181Y	39.5	37.4	36.8	35.4	34.1	33.2	33.1	33.0	31.5	31.2	29.1	29.1	28.9	28.6	28.0	28.6	28.2	30.0
Finland S419086Y	47.0	46.3	46.1	45.8	47.0	44.5	44.6	44.0	43.4	43.8	43.7	42.8	42.8	42.7	42.4	43.6	44.0	45.5
Euro area S826271Y	41.3	41.7	41.6	42.1	41.8	40.9	40.5	40.5	40.3	40.5	41.0	41.0	40.6	40.3	40.2	40.7	41.6	42.1
Euro area excluding Italy S842773Y	41.3	41.3	41.5	42.2	41.9	40.8	40.5	40.4	40.3	40.5	40.8	40.7	40.1	39.8	39.7	40.3	41.1	41.7
Bulgaria S646155Y	32.1	28.7	31.6	31.1	31.5	30.8	28.5	31.0	32.5	31.3	30.7	33.0	31.9	28.7	27.3	27.0	27.5	28.3
Czech Republic S291136Y	34.1	34.7	33.5	34.3	33.9	33.8	34.6	35.5	35.7	35.4	35.0	35.6	34.1	33.2	33.3	34.3	35.0	35.4
Denmark S678500Y	50.2	49.9	50.2	50.9	50.2	49.3	48.7	48.9	49.9	51.7	50.5	49.7	48.5	48.7	48.4	48.7	49.2	50.4
Croatia	36.5	36.4	35.5	35.9	36.2
Latvia S036548Y	30.9	32.0	32.9	32.1	29.9	29.0	28.7	28.8	28.5	29.0	30.3	30.2	29.2	27.3	27.2	27.5	27.9	27.6
Lithuania S696348Y	31.2	32.7	33.0	31.2	29.7	29.3	28.9	29.1	29.1	30.0	30.2	30.7	30.6	28.6	27.5	27.3	27.3
Hungary S827446Y	40.0	38.4	38.3	39.0	39.9	38.8	38.1	38.1	37.6	37.2	37.2	40.2	40.1	39.9	37.9	37.2	39.0	39.1
Poland S578412Y	37.4	36.6	35.6	35.1	32.8	32.2	32.9	32.5	31.7	32.9	33.9	34.7	34.1	31.6	31.6	32.2	32.4	31.9
Romania S987464Y	26.1	26.6	29.2	31.3	30.6	28.9	28.5	28.1	27.7	28.5	29.2	29.5	28.5	27.5	27.4	28.3	28.3	27.5
Sweden S206530Y	50.3	50.6	51.2	51.5	51.6	49.4	47.6	47.9	48.3	49.0	48.4	47.6	46.7	46.9	45.7	44.8	44.4	44.8
United Kingdom S792164Y	34.2	34.8	36.0	36.5	37.1	37.1	35.9	35.5	36.1	36.7	37.4	36.9	38.4	35.8	36.5	37.2	37.0	37.1
EU excluding euro area S855559Y	38.1	37.9	38.5	39.0	39.1	38.5	37.5	37.4	37.8	38.3	38.6	38.3	38.7	37.0	37.1	37.6	37.6	37.7
EU S087728Y	40.6	40.8	40.9	41.4	41.1	40.2	39.7	39.7	39.6	39.9	40.3	40.3	40.1	39.5	39.4	39.9	40.5	40.9
EU excluding Italy S869738Y	40.5	40.4	40.7	41.3	41.0	40.1	39.6	39.5	39.5	39.8	40.1	39.9	39.7	39.0	39.0	39.5	40.0	40.5
United States S960925Y	27.4	27.8	28.3	28.3	28.6	27.7	25.4	24.8	25.1	26.4	27.2	27.3	25.8	23.8	24.2	24.5	24.7
Japan S508404Y	27.4	27.5	27.1	26.9	27.4	28.2	27.0	26.8	26.3	27.5	28.9	29.3	29.9	27.9	28.2	29.4	30.0
Canada S820519Y

Tax revenue and social security contributions, excluding capital taxes

(as a percentage of GDP)

	1996	1997	1998	1999	2000	2001	2002	2003	2004	2005	2006	2007	2008	2009	2010	2011	2012	2013
Italy S249600Y	41.1	42.7	41.8	41.8	41.2	40.9	40.2	39.7	39.8	39.9	41.7	42.7	42.6	42.2	42.4	42.1	43.9	43.5
Belgium S448954Y	45.1	45.7	46.2	46.3	45.8	45.9	46.2	45.6	45.5	45.6	45.2	44.7	45.0	44.5	44.8	45.3	46.4	47.3
Germany S448636Y	41.0	41.0	41.3	42.3	42.1	40.2	39.9	40.1	39.2	39.2	39.5	39.5	39.7	40.4	38.9	39.5	40.0	40.0
Estonia S846889Y	34.3	34.3	34.1	32.6	31.0	30.3	31.1	30.8	30.4	30.4	30.4	31.2	31.6	35.2	33.8	32.1	32.4	32.2
Ireland S030391Y	33.5	33.0	32.0	32.2	31.8	30.3	29.3	29.7	31.2	31.6	33.0	32.4	30.5	29.3	29.1	28.9	29.5	31.0
Greece S043169Y	30.6	31.8	33.7	34.9	36.1	34.8	35.4	33.9	33.3	33.9	32.9	33.8	33.6	32.3	33.5	34.6	36.4	36.0
Spain S225994Y	33.3	33.5	33.9	34.3	34.5	34.2	34.7	34.5	35.3	36.3	37.2	37.6	33.6	31.8	33.4	33.0	33.7	34.1
France S570008Y	45.0	45.2	45.2	45.9	45.2	44.9	44.3	44.3	44.5	44.9	45.3	44.7	44.6	43.8	44.2	45.3	46.5	47.5
Cyprus S046506Y	26.3	25.8	27.5	27.8	29.9	30.6	30.8	32.2	32.0	33.9	35.5	39.8	38.4	35.1	35.4	35.1	34.5	35.1
Luxembourg S839409Y	37.8	39.5	39.7	38.5	39.3	40.1	39.7	38.6	37.9	38.1	36.4	36.1	38.1	40.5	38.9	39.0	40.1	40.0
Malta S209140Y	25.5	27.7	26.0	28.1	28.3	30.2	31.3	31.6	32.3	33.6	33.8	34.6	33.7	34.3	32.7	33.5	34.3	35.3
Netherlands S339431Y	40.2	39.6	39.4	40.3	39.8	38.4	37.8	37.5	37.7	37.8	38.9	38.6	39.1	38.2	39.0	38.5	39.0	39.6
Austria S260869Y	44.3	45.6	45.6	45.3	44.5	46.2	44.9	44.8	44.3	43.4	42.7	42.9	44.0	43.9	43.6	43.7	44.5	45.0
Portugal S761261Y	31.8	31.7	32.1	32.7	33.0	32.8	33.8	34.3	33.5	34.6	35.3	35.6	35.7	34.2	34.4	35.9	34.5	37.6
Slovenia S389111Y	38.0	36.9	37.6	38.0	37.4	37.6	38.0	38.3	38.2	38.7	38.3	37.6	37.2	37.2	37.7	37.2	37.6	37.6
Slovakia S579657Y	39.5	37.4	36.8	35.4	34.1	33.2	33.1	33.0	31.5	31.2	29.1	29.1	28.9	28.6	28.0	28.6	28.2	30.0
Finland S400460Y	46.8	46.1	45.9	45.5	46.7	44.2	44.3	43.7	43.1	43.5	43.4	42.6	42.4	42.5	42.2	43.3	43.7	45.2
Euro area S869777Y	41.1	41.4	41.4	41.9	41.5	40.6	40.2	40.1	39.9	40.2	40.7	40.7	40.3	39.9	40.0	40.3	41.3	41.7
Euro area excluding Italy S888601Y	41.1	41.1	41.3	41.9	41.6	40.6	40.2	40.1	40.0	40.2	40.5	40.3	39.8	39.5	39.5	40.0	40.8	41.4
Bulgaria S622647Y	32.0	28.7	31.5	31.0	31.4	30.6	28.4	30.8	32.3	31.0	30.3	32.4	31.3	28.5	27.0	26.8	27.2	28.1
Czech Republic S263262Y	34.1	34.6	33.4	34.2	33.8	33.8	34.6	35.5	35.7	35.3	35.0	35.6	34.1	33.2	33.3	34.3	35.0	35.4
Denmark S651514Y	49.9	49.7	50.0	50.7	49.9	49.1	48.5	48.7	49.7	51.5	50.2	49.5	48.2	48.5	48.2	48.4	48.9	50.2
Croatia	36.5	36.4	35.5	35.9	36.2
Latvia S018646Y	30.9	32.0	32.9	32.1	29.9	29.0	28.7	28.8	28.5	29.0	30.3	30.2	29.2	27.3	27.2	27.5	27.9	27.6
Lithuania S671587Y	27.1	31.2	32.7	33.0	31.2	29.7	29.3	28.9	29.1	29.1	30.0	30.2	30.7	30.6	28.6	27.5	27.3	27.3
Hungary S799667Y	39.9	38.3	38.3	39.0	39.8	38.7	38.0	38.0	37.5	37.2	37.1	40.1	40.0	39.9	37.4	36.6	38.5	38.6
Poland S545921Y	37.4	36.6	35.6	35.1	32.7	32.2	32.9	32.4	31.7	32.9	33.9	34.6	34.1	31.6	31.6	32.2	32.3	31.9
Romania S966098Y	26.1	26.6	29.2	31.3	30.6	28.9	28.5	28.1	27.7	28.5	29.2	29.5	28.5	27.5	27.4	28.3	28.3	27.5
Sweden S169929Y	50.2	50.5	51.1	51.4	51.5	49.3	47.4	47.8	48.2	49.0	48.4	47.6	46.7	46.9	45.7	44.8	44.4	44.8
United Kingdom S767898Y	34.0	34.6	35.8	36.3	36.9	36.8	35.6	35.3	35.8	36.4	37.1	36.7	36.7	35.5	36.3	37.0	36.8	36.8
EU excluding euro area S902801Y	37.9	37.8	38.4	38.9	38.9	38.3	37.3	37.3	37.6	38.1	38.4	38.1	37.7	36.8	37.0	37.4	37.4	37.5
EU S062814Y	40.4	40.5	40.6	41.1	40.8	40.0	39.5	39.3	39.3	39.6	40.1	40.0	39.6	39.2	39.2	39.6	40.3	40.6
EU excluding Italy S841580Y	40.3	40.2	40.4	41.0	40.8	39.9	39.4	39.3	39.2	39.6	39.9	39.6	39.2	38.7	38.7	39.2	39.8	40.2
United States S947599Y	27.2	27.5	27.9	27.9	28.3	27.3	25.1	24.6	24.8	26.2	27.0	27.1	25.6	23.6	24.1	24.4	24.6
Japan S490803Y	26.9	27.0	26.7	26.6	27.0	27.9	26.6	26.5	26.1	27.2	28.6	29.0	29.6	27.7	27.9	29.1	29.6
Canada S804070Y	35.1	35.7	35.6	35.6	35.1	33.8	32.8	32.5	32.5	32.4	32.6	32.4	30.9	31.6	30.7	30.5	30.7

Direct taxes

(as a percentage of GDP)

	1996	1997	1998	1999	2000	2001	2002	2003	2004	2005	2006	2007	2008	2009	2010	2011	2012	2013
Italy S180050Y	15.0	15.7	14.2	14.8	14.3	14.7	13.8	13.3	13.3	13.2	14.3	15.0	15.2	14.6	14.6	14.3	15.1	15.3
Belgium S387637Y	16.3	16.7	17.3	16.9	17.0	17.2	17.1	16.6	16.6	16.9	16.5	16.3	16.5	15.2	15.5	16.0	16.4	17.1
Germany S389099Y	11.9	11.6	12.0	12.5	12.8	11.3	10.9	10.8	10.6	10.9	11.7	12.1	12.2	11.6	11.0	11.5	12.0	12.2
Estonia S786636Y	9.2	9.2	10.4	9.8	7.7	7.2	7.5	8.0	7.9	7.0	7.1	7.4	7.9	7.5	6.8	6.5	6.8	7.4
Ireland S958516Y	13.8	13.8	13.6	13.6	13.4	12.6	11.5	11.7	12.2	12.1	13.0	12.7	11.5	10.7	10.5	11.9	12.6	13.2
Greece S974469Y	6.4	7.0	8.6	8.9	9.7	8.6	8.6	7.9	8.1	8.6	8.1	8.2	8.0	8.3	8.0	8.7	10.2	9.8
Spain S161705Y	10.3	10.2	10.1	10.0	10.2	10.1	10.6	10.0	10.4	11.0	11.8	13.0	10.6	9.6	9.5	9.7	10.3	10.3
France S504646Y	8.6	9.2	11.4	12.0	12.0	12.2	11.3	11.0	11.1	11.3	11.8	11.5	11.6	9.8	10.5	11.2	11.9	12.4
Cyprus S936406Y	8.5	8.7	9.8	10.7	11.1	11.2	11.2	9.7	8.1	9.3	10.8	13.8	12.9	11.2	11.1	11.7	11.1	11.6
Luxembourg S776542Y	15.8	16.4	16.0	14.8	14.9	15.2	15.3	14.6	13.0	13.6	13.0	13.0	14.1	14.8	14.6	14.4	14.6	14.6
Malta S160345Y	6.7	8.0	7.6	8.6	8.9	9.6	10.9	11.3	10.8	11.3	11.7	13.0	12.5	13.4	12.5	12.7	13.6	14.5
Netherlands S300326Y	12.7	12.1	11.9	11.8	11.6	11.4	11.4	10.7	10.4	11.4	11.5	11.9	11.7	11.8	12.0	11.5	10.9	10.9
Austria S194662Y	12.7	13.4	13.6	13.2	13.1	14.9	13.8	13.6	13.4	12.8	12.8	13.3	14.0	12.7	12.8	13.0	13.4	13.7
Portugal S703073Y	8.8	8.9	8.6	9.0	9.5	9.1	9.0	8.4	8.3	8.2	8.6	9.5	9.7	9.0	8.8	9.9	9.3	11.8
Slovenia S337752Y	7.3	7.4	7.2	7.3	7.3	7.5	7.7	7.9	8.2	8.7	9.1	9.2	8.9	8.3	8.2	8.0	7.7	7.3
Slovakia S522744Y	9.7	9.2	9.0	9.0	7.4	7.5	7.0	7.1	6.1	6.0	6.1	6.2	6.5	5.5	5.4	5.5	5.6	5.9
Finland S337376Y	18.9	18.4	18.9	18.5	21.1	19.0	18.8	17.8	17.5	17.5	17.3	17.5	17.4	16.1	16.0	16.4	16.0	16.9
Euro area S913107Y	11.8	12.0	12.3	12.7	12.8	12.3	11.9	11.5	11.5	11.7	12.3	12.7	12.5	11.6	11.6	11.9	12.4	12.7
Euro area excluding Italy S920738Y	11.1	11.2	11.9	12.2	12.4	11.8	11.5	11.1	11.1	11.4	11.9	12.2	11.9	10.9	10.9	11.4	11.9	12.2
Bulgaria S574561Y	10.1	9.3	8.4	7.5	6.8	7.4	6.2	6.0	5.7	4.7	4.8	7.6	6.1	5.6	5.1	4.9	4.9	5.2
Czech Republic S201997Y	8.0	8.5	8.0	8.2	7.9	8.3	8.7	9.2	9.1	8.9	8.8	9.0	8.0	7.2	6.9	7.2	7.2	7.3
Denmark S582991Y	30.7	30.3	29.9	30.1	30.3	29.3	29.1	29.4	30.2	31.7	30.5	29.9	29.4	29.7	29.6	29.7	30.4	31.8
Croatia	7.2	6.5	6.3	6.1	6.3
Latvia S968045Y	7.0	7.5	7.8	7.6	7.3	7.6	7.9	7.6	7.9	7.9	8.5	9.2	9.8	7.2	7.4	7.4	7.7	7.7
Lithuania S617862Y	8.0	8.7	9.0	9.1	8.4	7.8	7.4	7.9	8.7	9.0	9.5	9.2	9.3	6.0	4.7	4.4	4.9	5.0
Hungary S724792Y	9.2	8.9	8.8	9.4	9.8	10.1	10.1	9.5	9.0	9.0	9.4	10.3	10.6	9.9	8.1	6.4	7.0	6.9
Poland S478108Y	11.3	11.1	10.8	7.7	7.2	6.3	6.7	6.5	6.5	7.0	7.5	8.6	8.6	7.4	6.9	7.0	7.2	7.0
Romania S892718Y	9.8	10.3	8.4	7.8	7.0	6.4	5.8	6.0	6.4	5.3	6.0	6.7	6.7	6.5	6.1	6.2	6.1	6.0
Sweden S091709Y	20.6	21.0	20.9	21.6	22.5	20.7	19.4	20.1	20.8	22.0	22.2	21.2	19.8	19.6	19.2	18.5	18.1	18.5
United Kingdom S707414Y	14.4	14.7	15.9	15.9	16.3	16.4	15.4	14.8	15.0	15.8	16.5	16.2	16.5	15.5	15.4	15.5	15.0	14.9
EU excluding euro area S933840Y	16.0	16.0	16.5	16.4	16.6	16.2	15.4	15.2	15.4	15.9	16.3	16.0	15.6	14.8	14.5	14.5	14.3	14.4
EU S986535Y	12.7	13.0	13.4	13.6	13.8	13.4	12.8	12.4	12.5	12.8	13.4	13.6	13.3	12.4	12.3	12.5	12.9	13.2
EU excluding Italy S782247Y	12.4	12.5	13.2	13.5	13.7	13.2	12.7	12.3	12.4	12.8	13.3	13.4	13.0	12.0	12.0	12.3	12.6	12.9
United States S880821Y	13.1	13.6	14.0	14.1	14.5	13.5	11.3	10.8	11.0	12.3	13.1	13.3	11.8	9.7	10.4	11.4	11.8
Japan S413980Y	9.7	9.7	8.5	8.2	8.7	9.2	7.9	7.5	7.5	8.3	9.1	9.5	9.6	7.7	7.8	8.1	8.3
Canada S738314Y	16.7	17.3	17.4	17.7	17.9	16.5	15.2	14.9	15.3	15.5	16.0	16.1	15.4	15.2	14.5	14.6	14.7

Indirect taxes

(as a percentage of GDP)

	1996	1997	1998	1999	2000	2001	2002	2003	2004	2005	2006	2007	2008	2009	2010	2011	2012	2013
Italy S201645Y	11.5	12.1	15.0	14.8	14.6	14.1	14.2	13.9	14.0	14.1	14.8	14.6	13.7	13.6	14.0	14.0	15.0	14.5
Belgium S406741Y	12.5	12.7	12.6	13.1	12.9	12.5	12.6	12.6	12.9	13.0	13.1	12.7	12.5	12.5	12.8	12.6	12.9	12.9
Germany S406400Y	9.9	9.9	10.1	10.8	10.6	10.6	10.6	10.8	10.6	10.5	10.5	10.9	10.9	11.5	11.1	11.2	11.2	11.1
Estonia S802124Y	13.4	13.7	12.5	11.7	12.3	12.3	12.5	12.1	12.1	13.1	13.2	13.1	12.0	14.5	13.9	13.6	13.9	13.4
Ireland S975307Y	13.5	13.3	12.9	13.0	12.9	11.9	12.1	12.3	12.9	13.4	13.9	13.4	12.3	11.2	11.4	10.8	11.0	11.6
Greece S998018Y	12.6	12.8	13.0	13.7	13.8	13.5	13.0	12.1	11.8	11.8	12.4	12.7	12.4	11.3	12.1	12.8	12.5	12.8
Spain S179175Y	10.1	10.4	11.0	11.5	11.4	11.1	11.2	11.5	11.9	12.4	12.5	11.6	9.8	8.8	10.5	10.0	10.5	11.0
France S520395Y	15.9	15.9	15.8	15.8	15.2	14.8	15.0	15.0	15.3	15.4	15.3	15.1	14.9	15.2	15.0	15.4	15.6	15.8
Cyprus S953793Y	11.1	10.3	10.8	10.4	12.2	12.6	12.9	15.4	16.2	16.3	16.9	18.5	17.7	15.2	15.4	14.6	14.9	14.5
Luxembourg S795162Y	11.1	12.1	12.5	12.7	13.5	13.1	12.7	12.3	13.3	13.2	12.6	12.4	12.4	12.8	12.3	12.4	12.9	13.2
Malta S178664Y	11.4	12.0	11.1	12.1	12.0	12.7	12.6	12.6	13.7	14.5	14.6	14.4	14.0	13.6	13.1	13.5	13.3	13.5
Netherlands S313148Y	11.1	11.2	11.4	11.9	11.7	12.2	12.1	12.1	12.4	12.4	12.6	12.5	12.2	11.9	12.2	11.6	11.4	11.7
Austria S219095Y	14.4	14.8	14.8	15.0	14.6	14.7	14.8	14.8	14.7	14.5	14.0	13.9	14.1	14.6	14.5	14.4	14.6	14.5
Portugal S719112Y	13.0	12.7	13.2	13.5	13.0	13.0	13.7	14.3	13.7	14.5	14.9	14.5	14.1	12.7	13.3	13.7	13.7	13.6
Slovenia S350210Y	15.6	15.2	15.9	16.5	15.7	15.5	15.8	16.0	15.6	15.5	14.9	14.5	14.0	13.7	14.0	14.0	14.3	15.1
Slovakia S537018Y	13.8	13.1	12.8	12.4	12.5	11.3	11.4	11.9	12.1	12.4	11.2	11.1	10.4	10.4	10.1	10.5	9.9	10.4
Finland S356873Y	13.7	14.3	14.0	14.0	13.5	13.0	13.4	14.0	13.8	13.8	13.7	13.0	12.9	13.4	13.4	14.2	14.4	14.8
<i>Euro area</i> S943962Y	12.0	12.2	12.9	13.1	12.9	12.7	12.8	12.8	12.9	13.0	13.1	13.0	12.5	12.6	12.7	12.8	13.0	13.1
<i>Euro area excluding Italy</i> S953697Y	12.1	12.2	12.4	12.8	12.5	12.3	12.4	12.6	12.7	12.8	12.8	12.7	12.3	12.4	12.5	12.5	12.6	12.8
Bulgaria S589224Y	12.4	10.7	13.8	13.3	13.8	13.4	12.6	14.5	16.3	16.6	17.2	16.7	17.4	15.1	14.9	14.5	15.1	15.1
Czech Republic S221602Y	11.5	11.0	10.6	11.1	10.8	10.5	10.3	10.6	11.1	11.0	10.5	10.8	10.6	11.0	11.1	11.6	12.2	12.4
Denmark S605129Y	17.2	17.4	18.1	18.1	17.0	17.2	17.4	17.2	17.4	17.7	17.9	17.7	17.0	16.8	16.6	16.8	16.7	16.6
Croatia	17.1	18.0	17.5	18.2	18.6
Latvia S987489Y	13.0	13.8	14.6	13.6	12.4	11.9	11.3	12.1	11.7	12.5	12.9	12.3	10.9	10.7	11.3	11.4	11.5	11.6
Lithuania S631171Y	11.5	13.5	13.8	13.7	12.6	12.2	12.4	11.7	11.0	11.0	11.0	11.5	11.4	11.4	11.7	11.5	11.1	11.0
Hungary S754417Y	16.9	15.4	15.6	16.3	16.6	15.5	15.0	15.8	16.1	15.5	15.0	15.9	15.6	16.6	17.1	16.9	18.2	18.3
Poland S501811Y	14.4	13.9	13.1	13.6	12.6	12.5	13.2	13.2	12.9	13.6	14.2	14.1	14.2	12.8	13.6	13.8	12.9	12.6
Romania S913927Y	8.8	9.1	11.4	12.2	12.2	11.3	11.6	12.3	11.7	12.9	12.8	12.3	11.7	10.7	11.9	13.0	13.2	12.7
Sweden S112081Y	15.8	15.9	16.7	17.9	15.9	15.9	16.3	16.4	16.2	16.3	16.5	16.5	17.9	18.7	17.8	18.6	18.5	18.8
United Kingdom S719384Y	12.4	12.6	12.6	13.0	13.1	12.8	12.9	12.7	12.8	12.4	12.4	12.3	11.9	11.6	12.6	13.2	13.4	13.5
<i>EU excluding euro area</i> S965044Y	13.5	13.5	13.5	14.0	13.6	13.4	13.5	13.5	13.5	13.3	13.4	13.3	13.2	13.0	13.7	14.2	14.3	14.4
<i>EU</i> S010073Y	12.3	12.5	13.0	13.3	13.1	12.8	12.9	13.0	13.0	13.1	13.2	13.1	12.7	12.7	13.0	13.2	13.4	13.4
<i>EU excluding Italy</i> S797708Y	12.5	12.6	12.7	13.1	12.9	12.7	12.8	12.8	12.9	12.9	13.0	12.9	12.6	12.5	12.8	13.0	13.1	13.3
United States S901790Y	7.2	7.1	7.0	7.0	6.9	6.8	6.9	7.0	7.0	7.1	7.2	7.1	7.1	7.1	7.1	7.1	6.9
Japan S437186Y	7.9	7.8	8.4	8.5	8.5	8.5	8.3	8.2	8.3	8.4	8.6	8.4	8.5	8.2	8.3	8.5	8.5
Canada S754200Y	13.7	13.7	13.6	13.3	12.7	12.7	12.8	12.7	12.5	12.3	11.9	11.7	11.1	11.7	11.6	11.4	11.4

Social security contributions

(as a percentage of GDP)

	1996	1997	1998	1999	2000	2001	2002	2003	2004	2005	2006	2007	2008	2009	2010	2011	2012	2013
Italy S153295Y	14.6	14.9	12.6	12.2	12.3	12.1	12.2	12.5	12.6	12.6	12.6	13.1	13.7	14.0	13.8	13.7	13.8	13.8
Belgium S373086Y	16.4	16.3	16.3	16.3	16.0	16.2	16.5	16.4	16.0	15.8	15.7	15.7	16.1	16.8	16.5	16.7	17.1	17.3
Germany S374045Y	19.2	19.5	19.2	19.0	18.6	18.4	18.4	18.5	18.1	17.9	17.3	16.5	16.5	17.3	16.9	16.7	16.8	16.8
Estonia S773043Y	11.6	11.4	11.2	11.1	11.0	10.7	11.0	10.7	10.4	10.4	10.2	10.6	11.8	13.2	13.2	12.1	11.6	11.4
Ireland S944292Y	6.2	5.9	5.5	5.6	5.5	5.8	5.7	5.8	6.0	6.0	6.1	6.3	6.8	7.4	7.3	6.2	5.9	6.2
Greece S951517Y	11.6	12.0	12.2	12.3	12.6	12.7	13.7	13.9	13.4	13.5	12.4	13.0	13.2	12.7	13.4	13.1	13.7	13.4
Spain S143558Y	12.9	12.9	12.8	12.8	12.9	13.0	13.0	13.0	13.0	12.9	12.9	13.0	13.2	13.4	13.4	13.3	13.0	12.8
France S488177Y	20.5	20.0	17.9	18.1	17.9	17.9	18.0	18.3	18.1	18.2	18.2	18.0	18.1	18.8	18.7	18.8	19.0	19.4
Cyprus S914845Y	6.7	6.8	6.9	6.7	6.6	6.8	6.8	7.1	7.8	8.3	7.8	7.5	7.8	8.7	8.9	8.8	8.5	8.9
Luxembourg S760438Y	10.9	11.1	11.2	11.0	10.9	11.8	11.8	11.7	11.6	11.3	10.8	10.7	11.5	12.9	12.0	12.2	12.6	12.2
Malta S147558Y	7.3	7.7	7.3	7.4	7.4	7.9	7.8	7.7	7.7	7.7	7.5	7.1	7.2	7.3	7.1	7.3	7.3	7.3
Netherlands S283873Y	16.4	16.2	16.1	16.6	16.4	14.7	14.3	14.7	14.9	13.9	14.8	14.2	15.2	14.6	14.9	15.5	16.6	16.9
Austria S172202Y	17.2	17.3	17.1	17.1	16.8	16.6	16.3	16.4	16.2	16.1	15.9	15.7	15.9	16.5	16.3	16.3	16.4	16.7
Portugal S684351Y	9.9	10.1	10.3	10.2	10.6	10.8	11.1	11.6	11.5	11.9	11.8	11.6	11.9	12.5	12.3	12.3	11.6	12.2
Slovenia S326650Y	15.1	14.4	14.5	14.2	14.4	14.6	14.5	14.4	14.4	14.5	14.3	13.9	14.3	15.2	15.5	15.3	15.5	15.2
Slovakia S499204Y	16.0	15.1	14.9	14.1	14.2	14.4	14.7	14.0	13.3	12.8	11.9	11.9	12.0	12.7	12.5	12.5	12.7	13.8
Finland S321934Y	14.2	13.3	13.0	13.0	12.1	12.2	12.0	11.9	11.8	12.1	12.4	12.0	12.2	12.9	12.8	12.7	13.3	13.4
Euro area S977512Y	17.3	17.2	16.2	16.1	15.8	15.6	15.6	15.7	15.5	15.4	15.3	15.1	15.3	15.8	15.7	15.7	15.9	16.0
Euro area excluding Italy . . . S001425Y	17.8	17.7	16.9	16.9	16.6	16.4	16.3	16.5	16.2	16.0	15.8	15.5	15.6	16.2	16.1	16.1	16.3	16.4
Bulgaria S557695Y	9.4	8.6	9.3	10.2	10.8	9.8	9.6	10.3	10.2	9.7	8.3	8.1	7.8	7.7	7.0	7.3	7.2	7.8
Czech Republic S184305Y	14.6	15.1	14.9	15.0	15.1	15.0	15.5	15.7	15.5	15.5	15.7	15.7	15.6	14.9	15.2	15.5	15.6	15.6
Denmark S569172Y	2.0	2.0	2.0	2.5	2.6	2.6	2.1	2.1	2.1	2.0	1.9	1.9	1.8	1.9	1.9	2.0	1.9	1.8
Croatia	12.2	12.0	11.7	11.5	11.3
Latvia S954776Y	10.9	10.6	10.5	10.8	10.2	9.4	9.5	9.1	8.9	8.6	8.9	8.7	8.5	9.4	8.6	8.7	8.6	8.3
Lithuania S601601Y	7.7	9.0	10.0	10.1	10.2	9.7	9.4	9.3	9.4	9.2	9.4	9.5	10.0	13.2	12.2	11.6	11.3	11.2
Hungary S702819Y	13.9	14.1	13.9	13.3	13.4	13.1	12.9	12.7	12.4	12.6	12.7	13.9	13.8	13.3	12.2	13.3	13.3	13.4
Poland S456361Y	11.6	11.7	11.6	13.7	12.9	13.4	12.9	12.8	12.3	12.3	12.2	12.0	11.3	11.3	11.1	11.4	12.3	12.2
Romania S873877Y	7.5	7.2	9.5	11.4	11.4	11.2	11.1	9.9	9.7	10.3	10.3	10.5	10.1	10.2	9.5	9.1	9.0	8.8
Sweden S072170Y	13.8	13.5	13.5	12.0	13.1	12.6	11.7	11.4	11.1	10.7	9.8	9.9	9.0	8.7	8.7	7.7	7.7	7.5
United Kingdom S693235Y	7.2	7.3	7.2	7.4	7.5	7.6	7.4	7.8	8.0	8.2	8.2	8.1	8.3	8.4	8.3	8.3	8.4	8.4
EU excluding euro area . . . S013962Y	8.4	8.3	8.3	8.4	8.6	8.7	8.4	8.6	8.7	8.8	8.7	8.8	8.9	8.9	8.7	8.7	8.8	8.7
EU S967966Y	15.3	15.0	14.2	14.2	13.9	13.8	13.7	13.9	13.8	13.7	13.5	13.3	13.6	14.1	13.9	13.9	14.0	14.0
EU excluding Italy S754260Y	15.4	15.1	14.5	14.4	14.2	14.1	13.9	14.1	13.9	13.8	13.6	13.4	13.6	14.1	13.9	13.9	14.0	14.1
United States S870398Y	6.9	6.9	6.9	6.9	6.9	6.9	6.9	6.8	6.8	6.7	6.7	6.7	6.7	6.7	6.6	5.9	5.9
Japan S400980Y	9.4	9.6	9.8	9.8	9.9	10.3	10.4	10.7	10.3	10.6	10.9	11.0	11.5	11.8	11.8	12.5	12.8
Canada S730785Y	4.7	4.7	4.6	4.6	4.5	4.7	4.9	4.9	4.7	4.6	4.6	4.5	4.4	4.7	4.6	4.5	4.6

Total expenditure (Regulation EC 1500/2000)

(as a percentage of GDP)

	1996	1997	1998	1999	2000	2001	2002	2003	2004	2005	2006	2007	2008	2009	2010	2011	2012	2013
Italy S357242Y	52.2	50.0	48.6	47.8	45.8	47.7	47.0	48.0	47.5	47.9	48.5	47.7	48.6	52.0	50.6	49.8	50.7	50.8
Italy - Traditional account . S312773Y	52.4	50.1	48.7	47.9	45.9	47.8	47.2	48.4	47.8	48.3	49.0	48.2	49.2	52.5	51.2	50.3	51.1	51.2
Belgium S519590Y	52.4	51.2	50.3	50.1	49.0	49.1	49.7	51.0	49.1	51.7	48.4	48.2	49.7	53.7	52.5	53.4	55.0	54.6
Germany S531577Y	49.1	48.2	48.0	48.2	45.1	47.6	47.9	48.5	47.1	46.9	45.3	43.5	44.1	48.3	47.9	45.2	44.7	44.7
Estonia S918835Y	39.4	37.4	39.2	40.1	36.1	34.8	35.8	34.8	34.0	33.6	33.6	34.0	39.7	44.8	40.5	37.6	39.5	38.3
Ireland S111425Y	39.2	37.1	34.6	34.1	31.2	33.3	33.6	33.3	33.7	34.0	34.5	36.7	42.8	48.2	65.5	47.2	42.7	43.1
Greece S112222Y	44.5	45.3	44.7	44.8	47.1	45.8	45.5	45.1	46.0	44.4	45.1	47.2	50.5	54.0	51.3	51.8	53.3	58.5
Spain S288441Y	43.2	41.6	41.1	39.9	39.2	38.6	38.9	38.4	38.9	38.4	38.3	39.2	41.4	46.2	46.3	45.7	47.8	44.9
France S664973Y	54.5	54.2	52.8	52.6	51.7	51.7	52.9	53.4	53.2	53.5	52.9	52.6	53.3	56.7	56.5	55.9	56.7	57.0
Cyprus S137386Y	35.4	36.5	36.7	36.7	37.1	38.0	40.0	44.6	42.4	43.1	42.6	41.3	42.1	46.2	46.2	46.3	45.8	45.8
Luxembourg S921841Y	41.1	40.7	41.1	39.2	37.6	38.1	41.5	41.8	42.6	41.5	38.6	36.3	39.1	45.2	43.5	42.6	43.9	43.5
Malta S256142Y	41.0	41.4	41.7	41.6	39.5	41.2	41.7	45.6	43.6	43.6	43.2	41.8	43.3	42.5	41.2	41.3	43.1	43.9
Netherlands S419325Y	49.4	47.5	46.7	46.0	44.2	45.3	46.2	47.1	46.1	44.8	45.5	45.2	46.2	51.4	51.4	49.9	50.5	49.9
Austria S341540Y	55.7	53.3	53.6	53.3	51.8	51.2	50.5	51.2	53.6	49.9	49.0	48.5	49.3	52.6	52.8	50.8	51.6	51.2
Portugal S841563Y	42.4	41.6	41.4	41.5	41.6	43.1	43.0	44.6	45.4	46.6	45.2	44.3	44.7	49.7	51.5	49.3	47.4	48.6
Slovenia S455538Y	44.2	44.5	45.4	46.2	46.5	47.3	46.2	46.2	45.6	45.1	44.3	42.3	44.1	48.7	49.5	49.9	48.4	59.4
Slovakia S645755Y	53.7	48.9	45.8	48.1	52.1	44.5	45.1	40.1	37.7	38.0	36.5	34.2	34.9	41.6	39.8	38.9	38.2	38.7
Finland S461095Y	60.1	56.6	52.9	51.7	48.3	48.0	49.0	50.1	50.0	50.2	49.1	47.4	49.2	55.9	55.5	54.8	56.3	58.1
Euro area S029982Y	50.5	49.2	48.4	48.0	46.2	47.2	47.5	48.0	47.4	47.3	46.6	46.0	47.1	51.2	51.1	49.5	50.0	49.9
Euro area excluding Italy . . S042055Y	50.1	49.1	48.3	48.1	46.2	47.1	47.6	48.0	47.4	47.2	46.3	45.6	46.8	51.1	51.1	49.4	49.8	49.7
Bulgaria S694475Y	49.0	33.9	38.4	40.0	41.3	40.6	39.6	39.1	38.6	37.3	34.4	39.2	38.4	41.4	37.4	35.6	35.8	38.7
Czech Republic S332257Y	41.7	42.6	43.0	42.2	41.6	43.9	45.6	50.0	43.3	43.0	42.0	41.0	41.2	44.7	43.8	43.2	44.5	42.4
Denmark S732769Y	58.9	56.7	56.3	55.4	53.6	54.1	54.4	54.9	54.3	52.6	51.5	50.8	51.6	58.0	57.5	57.5	59.2	57.0
Croatia	46.1	46.9	48.1	45.7	46.0
Latvia S078989Y	37.1	36.2	39.1	41.6	37.6	35.0	36.0	34.9	35.9	35.8	38.3	36.0	39.1	43.7	43.5	38.4	36.4	36.1
Lithuania S733959Y	36.4	50.2	41.1	40.8	39.8	37.5	35.4	33.8	34.0	34.0	34.2	35.3	37.9	44.9	42.2	38.7	36.0	34.4
Hungary S895188Y	51.4	50.3	51.6	49.5	47.7	47.8	51.5	49.7	49.1	50.1	52.1	50.7	49.3	51.5	49.9	50.0	48.6	49.8
Poland S642387Y	51.0	46.4	44.3	42.7	41.1	43.8	44.3	44.7	42.6	43.4	43.9	42.2	43.2	44.6	45.4	43.4	42.2	41.9
Romania S038230Y	33.2	34.6	35.8	39.2	38.6	36.2	35.0	33.5	33.6	33.6	35.5	38.2	39.3	41.1	40.1	39.4	36.7	35.0
Sweden S271698Y	62.8	60.6	58.9	58.0	55.1	54.6	55.4	55.4	54.0	53.6	52.6	50.9	51.7	54.7	52.0	51.3	51.8	52.6
United Kingdom S840831Y	41.5	39.8	38.9	38.5	36.4	39.9	40.9	41.8	42.6	43.4	43.6	43.3	47.1	50.9	49.9	48.0	48.1	47.1
EU excluding euro area . . . S052404Y	46.8	44.3	43.3	42.7	40.5	42.9	43.9	44.7	44.6	44.9	44.8	44.2	46.7	50.2	49.2	47.7	47.7	46.9
EU S128446Y	49.7	48.1	47.1	46.7	44.7	46.1	46.5	47.1	46.7	46.7	46.2	45.5	47.0	51.0	50.6	49.0	49.4	49.1
EU excluding Italy S924412Y	49.3	47.8	46.9	46.5	44.5	45.8	46.5	47.0	46.6	46.5	45.8	45.2	46.8	50.8	50.6	48.9	49.2	48.8
United States S010606Y	36.4	35.3	34.4	34.0	33.7	34.9	36.0	36.6	36.3	36.4	36.1	36.9	39.0	42.9	42.6	41.5	40.0
Japan S569476Y	36.4	35.3	41.5	38.2	38.8	38.0	38.3	37.8	36.6	36.4	36.0	35.8	36.9	41.9	40.7	41.9	42.0
Canada S880406Y	45.1	42.7	42.6	41.0	39.7	40.3	39.6	39.4	38.2	37.6	37.9	37.8	38.4	42.7	42.3	41.0	40.6

Total expenditure, excluding interest payments (Regulation EC 1500/2000)

(as a percentage of GDP)

	1996	1997	1998	1999	2000	2001	2002	2003	2004	2005	2006	2007	2008	2009	2010	2011	2012	2013
Italy S258496Y	40.7	40.7	40.8	41.2	39.5	41.4	41.5	42.9	42.8	43.2	43.8	42.7	43.5	47.3	46.0	44.9	45.2	45.5
Italy - Traditional account . S299380Y	40.9	40.9	40.9	41.3	39.6	41.6	41.7	43.2	43.1	43.7	44.3	43.2	44.0	47.9	46.6	45.3	45.6	46.0
Belgium S457990Y	44.0	43.5	43.0	43.3	42.5	42.6	44.0	45.7	44.4	47.6	44.5	44.3	45.9	50.0	49.1	50.1	51.6	51.4
Germany S455922Y	45.6	44.8	44.6	45.1	41.9	44.5	45.0	45.4	44.2	44.1	42.5	40.7	41.3	45.6	45.3	42.6	42.3	42.5
Estonia S853841Y	39.1	37.1	38.7	39.9	35.9	34.7	35.6	34.6	33.8	33.4	33.4	33.8	39.5	44.6	40.3	37.4	39.3	38.2
Ireland S036234Y	34.7	33.0	31.3	31.8	29.2	31.7	32.2	32.0	32.5	32.9	33.4	35.7	41.4	46.1	62.3	43.9	39.0	38.4
Greece S051438Y	33.9	35.9	36.5	37.4	39.7	39.3	39.9	40.1	41.0	39.9	40.7	42.7	45.5	48.8	45.5	44.7	48.3	54.6
Spain S234357Y	38.0	37.0	36.9	36.4	36.0	35.6	36.2	36.0	36.8	36.6	36.7	37.5	39.8	44.4	44.4	43.2	44.7	41.4
France S579339Y	50.9	50.7	49.4	49.6	48.8	48.6	49.9	50.6	50.5	50.9	50.4	49.9	50.4	54.3	54.1	53.2	54.1	54.8
Cyprus S055632Y	33.0	34.0	33.6	33.6	33.7	34.6	36.8	41.0	39.1	39.6	39.3	38.3	39.3	43.7	43.9	43.9	42.6	42.4
Luxembourg S847812Y	40.7	40.3	40.6	38.9	37.3	37.8	41.3	41.6	42.4	41.4	38.4	36.0	38.8	44.8	43.1	42.1	43.4	43.0
Malta S213689Y	38.9	38.8	38.6	38.0	36.0	38.0	38.2	42.4	40.1	40.0	39.7	38.5	40.1	39.4	38.3	38.3	40.0	40.9
Netherlands S344076Y	44.1	42.6	42.0	41.7	40.5	42.2	43.4	44.5	43.6	42.4	43.3	43.1	44.0	49.3	49.4	47.9	48.6	48.1
Austria S269701Y	51.9	49.7	50.0	49.9	48.3	47.8	47.3	48.2	50.8	47.0	46.3	45.7	46.7	49.8	50.2	48.2	49.0	48.7
Portugal S770101Y	37.6	37.8	38.4	38.6	38.6	40.2	40.2	42.0	42.8	44.0	42.4	41.4	41.7	46.9	48.7	45.3	43.1	44.3
Slovenia S396481Y	42.1	42.1	43.2	43.8	44.1	45.0	44.0	44.3	43.9	43.5	42.9	41.0	42.9	47.3	47.8	48.0	46.2	56.8
Slovakia S585036Y	51.2	46.5	43.2	44.7	48.1	40.5	41.5	37.6	35.5	36.3	35.1	32.8	33.7	40.1	38.5	37.3	36.4	36.7
Finland S407058Y	55.9	52.4	49.4	48.7	45.5	45.3	46.9	48.4	48.5	48.7	47.6	45.9	47.8	54.7	54.4	53.7	55.3	57.2
Euro area S069181Y	45.0	44.3	43.9	44.0	42.3	43.4	44.0	44.7	44.3	44.3	43.8	43.0	44.1	48.4	48.2	46.4	46.9	46.9
Euro area excluding Italy . . S087396Y	45.9	45.1	44.5	44.6	42.9	43.8	44.6	45.1	44.7	44.6	43.7	43.1	44.2	48.6	48.7	46.7	47.2	47.2
Bulgaria S628476Y	27.3	26.6	34.3	36.3	37.1	36.3	37.3	36.9	36.7	35.7	33.0	38.0	37.5	40.7	36.7	34.9	34.9	37.9
Czech Republic S268447Y	40.5	41.5	41.8	41.3	40.8	42.9	44.5	49.0	42.2	41.9	40.9	40.0	40.1	43.4	42.4	41.8	43.1	41.0
Denmark S662366Y	53.2	51.7	51.8	51.4	50.0	50.8	51.4	52.2	52.0	50.7	49.8	49.2	50.1	56.2	55.9	55.8	57.6	55.5
Croatia	44.2	44.7	45.5	42.7	42.9
Latvia S025152Y	35.7	35.2	38.4	41.0	36.6	34.0	35.2	34.2	35.2	35.3	37.9	35.6	38.5	42.2	42.0	36.9	35.1	34.4
Lithuania S681118Y	35.5	49.5	40.0	39.4	38.0	36.0	34.1	32.6	33.1	33.2	33.5	34.6	37.2	43.6	40.4	36.9	34.1	32.7
Hungary S806317Y	42.2	41.4	44.1	42.4	42.4	43.1	47.4	45.6	44.6	45.9	48.2	46.6	45.1	46.8	45.8	45.8	44.4	45.5
Poland S558309Y	46.4	41.9	40.3	39.8	38.1	40.7	41.4	41.7	39.9	40.6	41.2	39.9	41.0	42.0	42.7	40.8	39.3	39.2
Romania S974053Y	31.4	30.2	31.8	34.2	34.6	32.8	32.5	31.9	32.1	32.4	34.7	37.5	38.6	39.6	38.6	37.8	34.9	33.2
Sweden S183826Y	57.5	55.4	54.2	54.1	51.6	51.8	52.6	53.4	52.4	52.0	51.0	49.2	50.1	53.7	51.2	50.3	51.0	52.0
United Kingdom S777302Y	38.0	36.3	35.5	35.7	33.7	37.5	38.9	39.9	40.7	41.3	41.6	41.1	44.8	48.9	46.9	44.7	45.1	44.1
EU excluding euro area . . . S099391Y	42.7	40.4	39.5	39.6	37.6	40.3	41.6	42.6	42.6	42.8	42.9	42.2	44.6	48.3	46.8	45.1	45.2	44.5
EU S073003Y	44.5	43.4	42.8	42.9	41.1	42.6	43.4	44.2	43.9	43.9	43.5	42.8	44.2	48.3	47.8	46.1	46.4	46.3
EU excluding Italy S848792Y	45.1	43.8	43.1	43.2	41.3	42.8	43.7	44.3	44.0	44.0	43.5	42.8	44.3	48.5	48.1	46.3	46.6	46.4
United States S954253Y	31.2	30.4	29.9	29.9	29.8	31.3	32.6	33.1	33.0	33.0	32.7	33.3	35.5	39.3	38.9	37.6	36.2
Japan S499519Y	33.1	32.1	38.1	34.9	35.6	35.3	35.9	35.8	34.7	34.7	34.2	33.9	35.0	39.9	38.7	39.7	39.8
Canada S812801Y	36.2	34.5	34.6	33.5	32.7	33.9	33.9	34.2	33.4	33.2	33.6	33.8	34.6	39.0	38.7	37.5	37.2

Current expenditure (Regulation EC 1500/2000)

(as a percentage of GDP)

	1996	1997	1998	1999	2000	2001	2002	2003	2004	2005	2006	2007	2008	2009	2010	2011	2012	2013
Italy S379341Y	48.5	46.6	44.9	43.9	43.2	43.5	43.4	43.7	43.5	43.8	43.5	43.6	44.9	47.5	47.2	46.7	47.6	48.1
Italy - Traditional account . . . S071647Y	48.7	46.7	45.0	43.9	43.3	43.7	43.6	44.0	43.9	44.2	44.0	44.1	45.4	48.1	47.8	47.2	48.0	48.5
Belgium S538586Y	49.5	48.0	47.3	46.8	45.9	46.5	47.1	47.8	46.5	46.5	45.9	45.4	47.1	50.3	49.7	50.1	51.2	51.8
Germany S546671Y	45.8	45.2	44.8	45.0	44.3	44.2	44.6	45.2	44.1	44.0	42.6	40.9	41.2	45.2	43.9	42.4	42.1	42.3
Estonia S933714Y	34.6	32.6	33.5	35.5	32.0	30.3	30.1	30.1	30.2	29.6	28.5	28.0	33.1	39.1	37.1	34.0	33.2	33.4
Ireland S131518Y	35.7	33.5	31.0	28.3	26.8	28.0	28.6	28.8	29.3	29.6	29.9	31.1	35.7	41.0	41.3	40.2	40.1	40.6
Greece S128362Y	40.6	39.7	38.9	39.0	40.6	40.0	40.0	39.5	39.9	40.1	40.4	42.2	44.8	48.8	47.3	48.6	46.7	43.4
Spain S302469Y	38.3	37.0	36.2	35.1	34.6	33.8	33.8	33.6	33.6	33.5	33.3	33.8	36.0	40.4	41.2	41.6	41.5	42.3
France S681026Y	50.3	50.1	48.9	48.5	47.7	47.7	49.0	49.5	49.2	49.3	48.8	48.4	49.1	52.3	52.6	51.9	52.6	53.0
Cyprus S161096Y	31.7	32.5	33.2	33.5	33.5	34.5	36.4	40.5	38.2	39.5	38.8	37.3	38.2	40.7	40.9	41.7	42.0	42.1
Luxembourg S941695Y	35.1	36.4	35.5	34.0	32.7	34.3	35.4	35.9	36.7	35.6	33.3	31.7	34.6	39.7	38.0	37.6	39.1	39.2
Malta S271215Y	36.7	36.9	36.8	36.5	35.0	37.1	37.3	37.9	39.6	38.7	38.5	37.8	40.0	39.4	37.8	38.2	39.6	39.8
Netherlands S437075Y	46.1	44.3	43.5	42.6	41.2	41.3	42.0	42.9	42.5	41.3	42.2	41.6	42.2	46.3	46.6	45.9	46.4	46.6
Austria S358530Y	51.0	49.4	49.4	49.5	48.5	47.7	47.2	48.0	47.0	46.6	45.8	44.8	45.8	48.9	48.7	47.3	47.6	48.1
Portugal S856786Y	37.0	35.6	35.6	36.0	37.0	37.7	38.6	39.9	40.5	42.0	41.7	41.0	41.7	45.8	45.7	45.4	44.4	46.2
Slovenia S476781Y	40.0	40.6	40.5	40.8	41.8	42.7	42.2	41.7	41.1	41.1	40.1	37.2	38.5	43.1	44.5	44.8	44.7	45.1
Slovakia S665397Y	43.5	41.7	39.6	39.6	40.1	39.3	38.6	37.1	34.8	34.2	33.6	31.5	31.8	37.0	36.3	35.2	35.1	36.0
Finland S473157Y	55.8	53.2	49.8	48.3	45.5	45.0	45.9	47.1	46.9	47.3	46.5	44.7	46.3	52.6	52.6	51.9	53.4	55.0
Euro area S111124Y	46.7	45.6	44.7	44.2	43.4	43.3	43.7	44.1	43.5	43.4	42.8	42.2	43.3	47.0	46.7	46.0	46.3	46.6
Euro area excluding Italy . . . S131364Y	46.3	45.4	44.6	44.2	43.4	43.2	43.7	44.1	43.5	43.4	42.7	41.9	42.9	46.9	46.6	45.8	46.0	46.4
Bulgaria S708893Y	48.3	32.1	33.9	35.7	37.3	36.8	35.6	35.7	35.0	33.4	30.5	30.9	32.7	36.3	32.5	31.9	31.8	34.1
Czech Republic S352624Y	33.7	34.7	33.9	35.5	35.5	35.6	37.0	38.6	36.2	35.9	35.5	35.1	34.9	38.3	38.2	38.1	38.1	38.5
Denmark S754352Y	56.3	54.2	53.9	53.1	51.3	51.9	52.3	52.9	52.1	50.5	49.2	48.5	48.7	55.4	54.5	54.2	54.5	54.1
Croatia	41.1	41.4	42.1	42.0	42.0
Latvia S092282Y	33.8	34.1	35.5	37.3	33.9	31.5	32.4	32.1	31.7	30.8	31.2	29.1	33.4	37.8	37.5	33.1	31.4	31.8
Lithuania S746466Y	31.5	35.2	37.4	37.3	35.0	33.1	31.4	30.3	30.0	30.2	29.6	29.2	32.4	40.4	37.2	33.8	32.2	30.9
Hungary S916888Y	46.8	45.0	43.9	44.3	41.7	41.2	42.5	44.1	44.3	44.7	45.8	45.1	45.1	47.1	45.2	44.1	43.7	44.6
Poland S662208Y	42.6	41.8	39.5	38.8	38.2	39.8	40.2	40.2	38.7	39.0	39.0	37.3	37.7	38.4	39.0	37.2	37.2	37.7
Romania S054352Y	28.7	31.4	32.9	36.1	34.1	32.1	30.5	28.6	28.5	28.7	28.9	30.5	31.6	34.8	33.5	31.5	30.9	29.6
Sweden S304653Y	59.3	57.0	56.5	54.7	52.2	51.6	52.1	52.3	50.9	50.4	49.4	47.8	48.4	51.1	48.5	47.7	48.1	49.0
United Kingdom S856436Y	39.1	37.9	37.1	36.6	36.9	37.6	38.6	39.2	40.0	40.7	40.7	40.4	41.9	45.8	46.2	44.9	45.2	44.5
EU excluding euro area . . . S141167Y	43.5	41.7	40.7	40.2	39.7	40.1	40.9	41.5	41.6	41.7	41.4	40.7	41.7	45.2	45.0	43.8	44.0	43.8
EU S137138Y	46.0	44.7	43.7	43.2	42.4	42.4	42.9	43.4	43.0	43.0	42.4	41.8	42.8	46.6	46.3	45.4	45.7	45.9
EU excluding Italy S947878Y	45.6	44.4	43.5	43.1	42.3	42.3	42.9	43.4	42.9	42.8	42.3	41.5	42.6	46.4	46.1	45.2	45.4	45.6
United States S029739Y	32.7	31.7	30.9	30.3	30.0	31.2	32.1	32.5	32.3	32.3	32.3	32.8	34.4	37.7	38.0	37.2	36.1
Japan S587947Y	31.4	31.5	31.6	32.8	36.6	36.1	37.3
Canada S897447Y

Current expenditure, excluding interest payments (Regulation EC 1500/2000)

(as a percentage of GDP)

	1996	1997	1998	1999	2000	2001	2002	2003	2004	2005	2006	2007	2008	2009	2010	2011	2012	2013
Italy S266039Y	37.0	37.3	37.0	37.3	36.9	37.3	37.9	38.6	38.8	39.1	38.8	38.7	39.7	42.9	42.6	41.8	42.1	42.8
Italy - Traditional account . S282887Y	37.2	37.5	37.1	37.4	37.1	37.4	38.1	38.9	39.1	39.6	39.3	39.1	40.3	43.5	43.2	42.2	42.5	43.2
Belgium S464541Y	41.1	40.3	40.0	40.0	39.3	40.1	41.5	42.5	41.9	42.3	41.9	41.6	43.2	46.7	46.3	46.8	47.8	48.6
Germany S466222Y	42.3	41.8	41.5	41.8	41.1	41.1	41.7	42.2	41.2	41.2	39.8	38.1	38.5	42.5	41.4	39.9	39.8	40.1
Estonia S860292Y	34.2	32.3	32.9	35.2	31.7	30.2	29.9	29.9	29.9	29.4	28.3	27.9	32.9	38.9	37.0	33.8	33.0	33.2
Ireland S041840Y	31.2	29.4	27.7	26.0	24.7	26.4	27.2	27.5	28.1	28.5	28.8	30.1	34.3	38.9	38.2	36.9	36.3	35.9
Greece S059049Y	30.0	30.4	30.7	31.6	33.2	33.4	34.5	34.5	34.9	35.6	36.0	37.7	39.8	43.6	41.5	41.5	41.7	39.4
Spain S242192Y	33.1	32.3	32.0	31.6	31.3	30.8	31.1	31.2	31.6	31.7	31.6	32.2	34.4	38.6	39.3	39.1	38.5	38.9
France S588452Y	46.8	46.7	45.6	45.5	44.9	44.7	46.0	46.7	46.5	46.6	46.2	45.7	46.1	49.9	50.2	49.3	50.1	50.8
Cyprus S065699Y	29.3	30.0	30.1	30.4	30.1	31.2	33.2	36.9	34.9	36.0	35.5	34.3	35.3	38.2	38.7	39.3	38.8	38.7
Luxembourg S857529Y	34.7	36.0	35.1	33.6	32.4	34.0	35.1	35.7	36.5	35.4	33.1	31.5	34.2	39.3	37.5	37.1	38.6	38.7
Malta S218427Y	34.6	34.3	33.7	32.9	31.5	33.9	33.9	34.7	36.1	35.1	35.0	34.5	36.8	36.3	34.9	35.2	36.5	36.8
Netherlands S350266Y	40.8	39.4	38.8	38.4	37.6	38.1	39.2	40.3	40.1	38.9	40.0	39.5	40.0	44.1	44.5	43.8	44.5	44.8
Austria S277603Y	47.2	45.8	45.8	46.1	45.1	44.3	44.1	45.1	44.1	43.7	43.0	42.1	43.2	46.2	46.0	44.7	45.0	45.6
Portugal S779254Y	32.2	31.8	32.5	33.1	34.0	34.8	35.8	37.3	37.9	39.4	38.9	38.1	38.6	42.9	42.9	41.3	40.1	41.9
Slovenia S403015Y	37.9	38.2	38.3	38.5	39.4	40.3	40.0	39.7	39.4	39.5	38.7	35.9	37.4	41.8	42.9	42.8	42.5	42.5
Slovakia S593020Y	41.0	39.3	37.1	36.3	36.0	35.3	35.1	34.6	32.7	32.5	32.1	30.1	30.6	35.6	35.0	33.6	33.3	34.1
Finland S412405Y	51.6	49.0	46.3	45.2	42.7	42.4	43.8	45.4	45.4	45.8	45.1	43.2	44.9	51.4	51.6	50.8	52.3	54.1
Euro area S154622Y	41.2	40.7	40.1	40.1	39.5	39.5	40.2	40.8	40.5	40.5	39.9	39.2	40.2	44.1	43.9	42.9	43.2	43.7
Euro area excluding Italy . . S161815Y	42.1	41.4	40.8	40.8	40.1	40.0	40.7	41.3	40.8	40.7	40.1	39.4	40.3	44.4	44.1	43.2	43.4	43.9
Bulgaria S635472Y	26.6	24.9	29.7	32.1	33.1	32.6	33.3	33.5	33.0	31.8	29.2	29.8	31.8	35.5	31.8	31.1	30.9	33.4
Czech Republic S275898Y	32.6	33.6	32.8	34.5	34.7	34.6	35.9	37.5	35.1	34.8	34.4	34.0	33.9	37.1	36.8	36.7	36.7	37.1
Denmark S671559Y	50.7	49.2	49.4	49.1	47.7	48.5	49.2	50.2	49.7	48.6	47.5	46.9	47.3	53.6	52.9	52.4	52.9	52.5
Croatia	39.2	39.1	39.5	39.0	38.9
Latvia S030521Y	32.4	33.2	34.8	36.7	32.9	30.6	31.7	31.4	30.9	30.3	30.8	28.7	32.8	36.3	36.0	31.7	30.0	30.1
Lithuania S690080Y	30.6	34.4	36.3	35.9	33.2	31.6	30.1	29.1	29.0	29.4	28.9	28.5	31.8	39.1	35.4	32.0	30.4	29.2
Hungary S817216Y	37.6	36.1	36.3	37.3	36.3	36.4	38.5	40.0	39.8	40.6	42.0	40.9	40.9	42.4	41.0	39.9	39.5	40.4
Poland S567797Y	38.0	37.3	35.5	35.9	35.1	36.6	37.3	37.2	36.0	36.2	36.4	35.0	35.5	35.8	36.3	34.5	34.4	35.1
Romania S981942Y	26.9	26.9	29.0	31.0	30.2	28.7	28.0	27.0	27.0	27.5	28.1	29.8	30.9	33.3	32.0	29.8	29.1	27.9
Sweden S195833Y	54.0	51.9	51.9	50.8	48.8	48.8	49.2	50.3	49.3	48.7	47.8	46.0	46.8	50.1	47.7	46.7	47.3	48.4
United Kingdom S785277Y	35.6	34.4	33.6	33.8	34.2	35.3	36.6	37.3	38.1	38.6	38.7	38.3	39.6	43.9	43.2	41.6	42.1	41.5
EU excluding euro area . . . S170015Y	39.4	37.7	37.0	37.1	36.8	37.5	38.6	39.4	39.5	39.6	39.4	38.7	39.6	43.3	42.6	41.2	41.5	41.3
EU S080460Y	40.8	40.0	39.4	39.4	38.8	39.0	39.8	40.4	40.2	40.2	39.8	39.1	40.1	43.9	43.5	42.5	42.7	43.1
EU excluding Italy S858617Y	41.4	40.4	39.7	39.7	39.1	39.2	40.1	40.7	40.4	40.4	39.9	39.2	40.1	44.1	43.7	42.6	42.8	43.1
United States S922310Y	27.5	26.8	26.3	26.2	26.2	27.5	28.6	29.1	29.0	28.9	28.8	29.3	31.0	34.0	34.3	33.3	32.3
Japan S002159Y	29.7	29.8	29.8	30.8	34.5	34.1	35.2
Canada S326823Y

Interest payments

(as a percentage of GDP)

	1996	1997	1998	1999	2000	2001	2002	2003	2004	2005	2006	2007	2008	2009	2010	2011	2012	2013
Italy S221647Y	11.5	9.2	7.9	6.6	6.2	6.2	5.6	5.1	4.7	4.6	4.6	5.0	5.2	4.7	4.6	5.0	5.5	5.3
Belgium S424578Y	8.4	7.7	7.3	6.8	6.6	6.4	5.7	5.3	4.7	4.2	4.0	3.9	3.8	3.6	3.4	3.3	3.4	3.2
Germany S421703Y	3.5	3.4	3.4	3.2	3.2	3.1	3.0	3.0	2.9	2.8	2.8	2.8	2.8	2.7	2.5	2.5	2.4	2.2
Estonia S819098Y	0.4	0.3	0.5	0.3	0.2	0.1	0.2	0.2	0.2	0.2	0.2	0.2	0.2	0.2	0.1	0.1	0.2	0.1
Ireland S008536Y	4.5	4.1	3.3	2.3	2.0	1.6	1.4	1.3	1.2	1.1	1.1	1.0	1.3	2.0	3.1	3.3	3.7	4.7
Greece S021613Y	10.6	9.4	8.2	7.4	7.4	6.5	5.6	5.0	5.0	4.5	4.4	4.5	5.0	5.2	5.8	7.1	5.0	4.0
Spain S200044Y	5.2	4.7	4.2	3.5	3.2	3.0	2.7	2.3	2.0	1.8	1.6	1.6	1.6	1.8	1.9	2.5	3.1	3.4
France S541905Y	3.6	3.4	3.3	3.0	2.9	3.0	2.9	2.8	2.7	2.7	2.6	2.7	2.9	2.4	2.4	2.6	2.6	2.3
Cyprus S975951Y	2.4	2.5	3.1	3.1	3.4	3.4	3.2	3.6	3.3	3.5	3.3	3.0	2.8	2.6	2.2	2.4	3.2	3.4
Luxembourg S817353Y	0.4	0.4	0.4	0.3	0.3	0.3	0.3	0.2	0.2	0.2	0.2	0.2	0.3	0.4	0.4	0.5	0.5	0.5
Malta S189908Y	2.2	2.6	3.1	3.6	3.5	3.2	3.4	3.2	3.5	3.6	3.5	3.3	3.1	3.1	2.9	3.0	3.1	3.0
Netherlands S322697Y	5.3	4.9	4.7	4.3	3.7	3.2	2.8	2.6	2.5	2.3	2.2	2.2	2.2	2.2	2.1	2.1	1.9	1.8
Austria S236619Y	3.9	3.6	3.6	3.4	3.4	3.4	3.1	2.9	2.8	2.9	2.7	2.7	2.6	2.8	2.7	2.6	2.6	2.6
Portugal S740310Y	4.8	3.7	3.1	2.9	2.9	2.9	2.8	2.6	2.6	2.6	2.8	2.9	3.0	2.8	2.8	4.0	4.3	4.3
Slovenia S368845Y	2.1	2.4	2.2	2.3	2.4	2.4	2.2	2.0	1.7	1.6	1.4	1.3	1.1	1.4	1.6	1.9	2.2	2.6
Slovakia S551845Y	2.5	2.4	2.5	3.4	4.1	4.0	3.6	2.5	2.2	1.7	1.5	1.4	1.2	1.4	1.3	1.6	1.8	2.0
Finland S375805Y	4.2	4.2	3.5	3.0	2.8	2.7	2.1	1.7	1.6	1.5	1.4	1.5	1.4	1.1	1.1	1.1	1.0	1.0
Euro area S183087Y	5.5	4.9	4.5	4.0	3.9	3.8	3.5	3.3	3.1	3.0	2.9	3.0	3.0	2.9	2.8	3.1	3.1	2.9
Euro area excluding Italy . . . S193509Y	4.2	4.0	3.8	3.5	3.4	3.3	3.0	2.9	2.7	2.6	2.5	2.5	2.6	2.5	2.5	2.7	2.6	2.5
Bulgaria S602404Y	21.7	7.3	4.1	3.7	4.2	4.3	2.3	2.2	1.9	1.6	1.3	1.2	0.9	0.8	0.7	0.7	0.9	0.8
Czech Republic S237267Y	1.2	1.1	1.1	1.0	0.8	1.0	1.1	1.1	1.1	1.1	1.1	1.1	1.1	1.3	1.4	1.4	1.5	1.4
Denmark S621830Y	5.7	5.0	4.5	4.0	3.6	3.3	3.1	2.7	2.3	1.9	1.6	1.6	1.4	1.8	1.7	1.8	1.6	1.5
Croatia	2.0	2.2	2.6	3.0	3.1
Latvia S000226Y	1.4	0.9	0.7	0.7	1.0	0.9	0.7	0.7	0.7	0.5	0.4	0.4	0.6	1.5	1.4	1.5	1.3	1.7
Lithuania S645520Y	0.8	0.7	1.1	1.5	1.7	1.5	1.3	1.2	0.9	0.8	0.7	0.7	0.7	1.3	1.8	1.8	1.8	1.7
Hungary S772719Y	9.2	8.9	7.5	7.1	5.3	4.7	4.1	4.1	4.4	4.1	3.9	4.2	4.2	4.7	4.1	4.1	4.3	4.2
Poland S516559Y	4.6	4.5	4.0	3.0	3.0	3.1	2.9	3.0	2.8	2.8	2.7	2.3	2.2	2.6	2.7	2.7	2.8	2.6
Romania S934532Y	1.8	4.4	4.0	5.0	3.9	3.4	2.5	1.6	1.5	1.2	0.8	0.7	0.7	1.5	1.5	1.6	1.8	1.8
Sweden S136421Y	5.3	5.1	4.7	3.9	3.5	2.8	2.8	2.0	1.6	1.6	1.6	1.7	1.7	1.0	0.8	1.0	0.7	0.6
United Kingdom S735484Y	3.5	3.5	3.4	2.8	2.7	2.3	2.0	1.9	1.9	2.1	2.0	2.2	2.3	2.0	3.0	3.3	3.0	3.0
EU excluding euro area . . . S215008Y	4.1	4.0	3.7	3.1	2.9	2.6	2.2	2.1	2.0	2.1	1.9	2.0	2.0	1.9	2.4	2.6	2.5	2.4
EU S032985Y	5.2	4.7	4.3	3.8	3.6	3.5	3.2	3.0	2.8	2.7	2.6	2.7	2.8	2.6	2.7	2.9	2.9	2.8
EU excluding Italy S816923Y	4.2	4.0	3.8	3.4	3.2	3.0	2.8	2.7	2.5	2.4	2.3	2.4	2.4	2.3	2.5	2.7	2.6	2.5
United States S919104Y	5.2	4.9	4.6	4.1	3.8	3.6	3.4	3.4	3.3	3.4	3.5	3.6	3.4	3.7	3.7	3.9	3.8
Japan S460408Y	3.3	3.3	3.3	3.4	3.2	2.7	2.3	2.0	1.9	1.7	1.8	1.9	2.0	2.0	2.0	2.1	2.1
Canada S772263Y	8.9	8.2	8.1	7.5	7.0	6.5	5.7	5.3	4.8	4.4	4.2	4.1	3.8	3.7	3.6	3.5	3.4

Final consumption expenditure

(as a percentage of GDP)

	1996	1997	1998	1999	2000	2001	2002	2003	2004	2005	2006	2007	2008	2009	2010	2011	2012	2013
Italy S141280Y	18.1	18.2	18.0	18.1	18.3	18.8	19.0	19.5	19.7	20.1	20.0	19.5	20.0	21.4	21.1	20.4	20.0	19.9
Belgium S365580Y	21.8	21.3	21.2	21.4	21.3	21.7	22.5	22.9	22.5	22.7	22.4	22.2	23.1	24.7	24.3	24.4	25.0	25.3
Germany S368838Y	19.7	19.3	19.1	19.2	19.0	19.0	19.2	19.3	18.9	18.8	18.4	17.9	18.3	20.0	19.5	19.1	19.3	19.5
Estonia S762208Y	23.2	20.9	20.7	22.0	19.8	18.8	18.4	18.3	17.6	17.2	16.2	16.4	19.3	21.7	20.8	19.2	19.2	19.5
Ireland S930956Y	16.8	16.2	15.4	14.9	14.7	15.5	16.0	16.1	16.4	16.3	16.5	17.2	19.1	20.5	19.2	18.4	18.0	18.0
Greece S941448Y	15.5	16.1	16.2	17.0	18.0	17.5	18.5	17.2	17.4	19.6	19.6	20.5	21.0	23.6	21.5	20.7	20.9	20.0
Spain S135861Y	17.9	17.4	17.3	17.1	17.1	17.0	17.1	17.3	17.8	18.0	18.0	18.3	19.5	21.4	21.5	21.2	20.2	20.1
France S480230Y	23.9	23.9	23.1	23.2	22.9	22.8	23.5	23.8	23.8	23.8	23.5	23.1	23.3	24.5	24.5	24.2	24.4	24.7
Cyprus S905902Y	15.5	17.1	16.7	17.4	16.2	17.2	18.2	19.8	17.9	18.0	18.4	17.5	18.0	20.1	20.0	20.1	19.2	18.6
Luxembourg S752471Y	16.4	16.7	15.8	15.5	15.1	16.1	16.5	16.4	16.9	16.5	15.4	14.5	15.5	17.7	16.9	16.7	17.4	17.5
Malta S141740Y	19.2	18.6	18.7	18.1	17.8	19.2	19.2	19.6	20.1	19.1	19.4	18.7	20.4	20.7	20.0	20.2	21.1	20.8
Netherlands S278856Y	22.8	22.3	22.2	22.2	22.0	22.6	23.7	24.5	24.2	23.7	25.1	25.2	25.7	28.6	28.5	27.9	28.5	28.3
Austria S782924Y	20.2	19.3	19.2	19.6	19.0	18.7	18.4	18.7	18.4	18.4	18.3	18.0	18.7	19.8	19.5	18.9	19.0	19.0
Portugal S673041Y	17.7	17.7	17.9	18.1	19.0	19.4	19.7	20.0	20.3	21.1	20.5	19.8	20.1	22.1	21.6	19.9	18.2	19.0
Slovenia S318987Y	18.3	18.1	18.1	18.1	18.7	19.3	19.1	19.0	18.8	19.0	18.8	17.3	18.1	20.2	20.8	20.8	20.8	20.2
Slovakia S488075Y	23.9	21.8	22.2	20.1	20.1	20.6	20.3	20.4	19.0	18.3	18.8	17.1	17.5	19.9	19.3	18.5	18.1	18.3
Finland S310439Y	23.2	22.5	21.8	21.4	20.6	20.7	21.4	22.1	22.2	22.5	22.2	21.5	22.5	25.2	24.7	24.5	25.1	25.7
Euro area S223082Y	20.4	20.1	19.8	19.8	19.7	19.8	20.2	20.5	20.4	20.5	20.3	20.1	20.6	22.3	22.0	21.5	21.5	21.6
Euro area excluding Italy . . S232948Y	20.8	20.5	20.2	20.2	20.0	20.1	20.5	20.7	20.5	20.6	20.4	20.2	20.7	22.5	22.2	21.8	21.8	21.9
Bulgaria S549034Y	13.7	13.2	16.8	17.8	19.0	18.8	18.9	19.9	19.4	18.3	18.0	17.2	17.1	16.8	16.2	15.7	15.5	17.1
Czech Republic S173803Y	19.5	20.3	19.4	20.5	20.3	20.3	21.7	22.7	21.5	21.4	20.7	19.8	19.7	21.5	21.3	20.7	20.5	20.7
Denmark S559612Y	25.4	25.0	25.6	25.7	25.1	25.7	26.2	26.5	26.5	26.0	25.9	26.0	26.5	29.8	29.0	28.4	28.5	28.2
Croatia	21.1	20.9	20.7	20.6	20.4
Latvia S948477Y	21.3	20.5	22.6	22.5	20.9	20.7	21.4	21.8	19.8	17.8	16.8	17.8	20.0	19.6	18.4	17.7	16.6	16.5
Lithuania S593931Y	24.4	24.3	26.0	23.8	22.6	21.3	20.8	19.7	19.3	18.6	19.1	17.8	19.2	21.9	20.4	18.7	17.6	16.9
Hungary S690269Y	22.1	21.9	21.4	21.7	21.5	21.4	22.2	23.5	22.4	22.6	23.0	21.6	21.8	22.7	22.0	21.0	20.4	20.5
Poland S444781Y	18.3	17.8	17.3	17.4	17.4	17.9	17.9	18.1	17.6	18.1	18.3	18.0	18.5	18.5	18.9	18.0	17.8	18.0
Romania S865261Y	12.6	13.5	12.7	17.4	17.5	16.2	15.1	17.0	15.7	17.1	16.7	16.9	17.7	18.1	16.3	15.1	15.2	14.9
Sweden S062418Y	27.3	26.7	26.8	26.7	25.8	26.3	27.0	27.3	26.5	26.2	26.0	25.5	26.1	27.7	26.7	26.6	26.9	27.5
United Kingdom S675113Y	18.7	17.9	17.6	18.0	18.3	18.8	19.7	20.3	20.8	21.0	21.2	20.7	21.5	23.2	22.8	21.7	21.8	21.3
EU excluding euro area . . . S240557Y	20.4	19.6	19.4	19.7	19.7	20.1	20.8	21.4	21.5	21.5	21.6	21.0	21.7	23.2	22.7	21.9	21.9	21.7
EU S958161Y	20.4	20.0	19.7	19.8	19.7	19.9	20.4	20.7	20.7	20.8	20.7	20.3	20.9	22.5	22.2	21.6	21.6	21.6
EU excluding Italy S745246Y	20.7	20.3	19.9	20.1	19.9	20.1	20.6	20.9	20.8	20.9	20.8	20.4	21.0	22.7	22.3	21.8	21.8	21.9
United States S862555Y	14.5	14.2	14.0	14.0	14.0	14.5	15.0	15.2	15.2	15.1	15.1	15.3	16.1	16.9	16.9	16.3	15.7
Japan S388953Y	15.4	15.4	15.9	16.5	16.9	17.7	18.3	18.3	18.2	18.4	18.2	18.1	18.6	19.9	19.7	20.4	20.5
Canada S721056Y	20.9	20.0	20.0	19.3	19.0	19.4	19.7	19.9	19.4	19.2	19.4	19.6	20.1	22.5	22.0	21.7	21.7

Compensation of employees

(as a percentage of GDP)

	1996	1997	1998	1999	2000	2001	2002	2003	2004	2005	2006	2007	2008	2009	2010	2011	2012	2013
Italy S293025Y	11.2	11.4	10.5	10.5	10.4	10.5	10.6	10.8	10.7	10.9	10.9	10.6	10.8	11.3	11.1	10.7	10.5	10.5
Belgium S486636Y	11.9	11.8	11.7	11.7	11.5	11.7	12.1	12.3	11.9	12.0	11.9	11.8	12.1	12.8	12.6	12.6	12.9	13.1
Germany S494735Y	8.8	8.7	8.5	8.4	8.3	8.2	8.2	8.2	8.1	7.9	7.7	7.3	7.4	8.0	7.8	7.6	7.6	7.6
Estonia S881532Y	11.3	10.5	10.5	11.8	10.8	10.2	10.3	10.2	10.2	9.9	9.3	9.5	11.3	12.7	11.9	10.9	10.5	10.7
Ireland S067336Y	10.4	9.9	9.1	8.7	8.4	8.9	9.2	9.5	9.7	10.2	10.2	10.5	11.8	12.8	12.2	11.8	11.5	11.2
Greece S081201Y	9.7	10.4	10.5	10.6	10.6	10.5	11.2	10.9	11.6	11.6	11.2	11.4	12.0	13.4	12.5	12.3	12.4	12.0
Spain S261881Y	11.2	10.8	10.6	10.5	10.3	10.1	10.0	10.0	10.1	10.0	10.0	10.2	10.9	12.0	12.0	11.8	11.2	11.3
France S621182Y	13.7	13.6	13.4	13.5	13.3	13.2	13.4	13.5	13.3	13.2	13.0	12.8	12.8	13.5	13.4	13.2	13.2	13.3
Cyprus S097108Y	13.3	13.8	13.5	13.5	13.6	13.2	13.8	15.6	15.0	14.9	14.9	14.6	14.6	16.2	15.8	16.1	15.9	15.6
Luxembourg S893220Y	8.5	8.8	8.5	7.8	7.5	7.9	8.1	8.0	8.1	7.9	7.4	7.1	7.5	8.5	8.2	8.2	8.4	8.4
Malta S235098Y	14.6	13.9	14.0	13.3	12.5	14.2	13.9	14.1	14.1	13.5	13.0	12.7	13.9	13.9	13.1	13.0	13.3	13.5
Netherlands S376898Y	10.1	9.8	9.7	9.7	9.5	9.6	9.8	10.1	10.0	9.6	9.3	9.1	9.2	10.1	10.1	9.8	9.8	9.5
Austria S299152Y	12.3	11.5	11.3	11.3	11.0	9.8	9.5	9.6	9.3	9.3	9.3	9.0	9.2	9.8	9.8	9.5	9.5	9.4
Portugal S803684Y	12.7	12.7	13.0	13.3	13.7	13.9	14.2	13.6	13.6	14.0	13.1	12.1	12.0	12.7	12.2	11.3	10.0	10.7
Slovenia S423117Y	11.2	11.1	10.9	10.9	11.3	11.7	11.6	11.7	11.6	11.5	11.2	10.5	11.0	12.4	12.7	12.8	12.7	12.3
Slovakia S619457Y	9.5	9.3	9.5	9.4	8.8	8.9	9.1	8.9	8.1	7.3	7.2	6.6	6.8	7.7	7.7	7.4	7.3	7.6
Finland S429868Y	15.4	14.6	13.9	13.6	13.1	13.0	13.3	13.7	13.6	13.8	13.5	12.9	13.3	14.8	14.5	14.2	14.5	14.7
Euro area S247547Y	11.0	10.9	10.6	10.6	10.4	10.4	10.5	10.6	10.5	10.5	10.3	10.1	10.3	11.1	10.9	10.6	10.5	10.5
Euro area excluding Italy .. S254863Y	11.0	10.8	10.6	10.6	10.5	10.4	10.5	10.6	10.5	10.4	10.2	10.0	10.2	11.0	10.8	10.6	10.5	10.5
Bulgaria S659856Y	8.0	7.1	9.8	10.3	10.2	8.7	9.4	10.1	10.0	9.4	8.8	8.8	9.2	9.9	9.5	9.2	9.0	9.9
Czech Republic S305423Y	7.2	7.1	6.6	7.0	6.8	7.1	7.5	8.0	7.6	7.6	7.5	7.3	7.3	7.8	7.5	7.3	7.4	7.6
Denmark S695429Y	17.2	17.0	17.4	17.5	17.1	17.4	17.8	18.0	17.8	17.3	17.0	16.8	17.1	19.4	19.0	18.5	18.3	18.2
Croatia	12.2	12.1	12.4	12.1	11.9
Latvia S050909Y	10.9	10.4	10.5	11.2	10.9	10.4	10.6	10.8	10.5	10.1	10.1	10.7	12.1	12.1	10.2	9.5	9.1	9.2
Lithuania S707412Y	10.4	11.1	12.6	13.3	12.1	11.7	11.3	10.8	10.8	10.3	10.4	9.9	10.7	12.8	11.0	10.3	9.8	9.6
Hungary S850423Y	10.8	10.6	10.7	10.9	10.8	11.2	12.3	13.3	12.6	12.6	12.2	11.7	11.6	11.5	11.0	10.3	10.1	10.3
Poland S598321Y	10.5	10.5	10.0	10.1	10.1	10.7	10.8	10.7	10.1	10.0	9.8	9.6	10.0	10.3	10.2	9.7	9.4	9.3
Romania S008913Y	6.4	5.4	5.8	8.1	7.9	8.3	8.5	8.2	8.1	8.7	9.3	9.7	10.5	10.9	9.7	7.9	7.8	8.1
Sweden S226538Y	16.8	16.4	15.8	15.4	15.2	15.5	15.7	16.0	15.8	15.6	15.1	14.9	14.8	15.2	14.5	14.0	14.3	14.4
United Kingdom S810320Y	10.3	9.9	9.5	9.5	9.6	10.0	10.2	10.6	10.9	11.1	11.1	10.8	10.8	11.5	11.4	10.9	10.7	10.1
EU excluding euro area ... S265540Y	11.7	11.1	10.8	10.8	10.7	11.0	11.3	11.7	11.7	11.7	11.6	11.3	11.4	12.2	11.9	11.4	11.2	11.0
EU S107285Y	11.2	11.0	10.7	10.6	10.5	10.6	10.7	10.9	10.8	10.8	10.7	10.4	10.6	11.3	11.1	10.8	10.7	10.6
EU excluding Italy. S889242Y	11.1	10.9	10.7	10.7	10.5	10.6	10.7	10.9	10.8	10.8	10.6	10.4	10.6	11.3	11.1	10.8	10.7	10.6
United States S974123Y	9.9	9.7	9.6	9.5	9.5	9.9	10.2	10.4	10.3	10.1	10.0	10.1	10.4	11.0	11.0	10.6	10.2
Japan S517470Y	6.2	6.2	6.4	6.5	6.5	6.5	6.7	6.5	6.4	6.3	6.2	6.2	6.2	6.5	6.1	6.3	6.2
Canada S832361Y	12.8	12.2	11.9	11.5	11.2	11.3	11.5	11.7	11.3	11.1	11.3	11.4	11.5	12.9	12.4	12.2	12.2

Social benefits other than social transfers in kind

(as a percentage of GDP)

	1996	1997	1998	1999	2000	2001	2002	2003	2004	2005	2006	2007	2008	2009	2010	2011	2012	2013
Italy S285077Y	16.4	16.9	16.6	16.8	16.3	16.1	16.5	16.7	16.8	16.9	16.9	17.0	17.6	19.2	19.2	19.3	19.9	20.5
Belgium S481322Y	16.4	16.1	15.9	15.6	15.2	15.4	15.8	16.1	15.8	15.7	15.5	15.4	15.8	17.3	17.0	17.1	17.7	18.2
Germany S487168Y	18.4	18.5	18.2	18.5	18.0	18.2	18.7	19.0	18.7	18.5	17.7	16.5	16.3	18.0	17.2	16.3	16.1	16.1
Estonia S874720Y	9.8	9.4	9.6	10.5	9.5	9.1	8.9	8.8	9.2	8.9	8.7	8.5	10.5	13.9	13.0	11.5	11.0	10.9
Ireland S058389Y	10.5	10.5	9.7	8.5	7.7	8.3	8.8	8.8	9.1	9.5	9.7	10.3	12.3	15.1	15.3	15.2	15.0	14.7
Greece S074303Y	13.9	14.0	14.2	14.3	14.9	15.5	15.6	16.0	15.7	14.1	14.7	15.3	16.7	18.1	18.1	19.2	19.9	18.6
Spain S254662Y	13.5	13.0	12.5	12.1	12.0	11.7	11.8	11.7	11.7	11.6	11.4	11.6	12.5	14.7	15.5	15.6	16.3	16.6
France S607223Y	18.1	18.2	17.8	17.7	17.2	17.1	17.5	17.7	17.7	17.8	17.8	17.7	17.8	19.5	19.6	19.6	19.9	20.3
Cyprus S086510Y	8.3	8.8	8.9	9.0	9.2	9.4	10.4	11.5	12.2	12.8	12.3	11.5	12.1	13.3	14.2	14.6	14.7	15.7
Luxembourg S877200Y	14.2	14.5	14.3	13.5	13.1	13.9	14.5	15.0	14.7	14.4	13.5	12.9	14.4	16.8	15.9	15.4	16.0	15.9
Malta S230525Y	11.9	12.0	12.2	12.3	11.4	12.0	12.1	12.1	12.4	12.5	12.2	12.3	12.1	12.9	12.5	12.5	12.9	12.8
Netherlands S367251Y	14.6	13.5	12.7	12.1	11.3	11.1	11.2	11.5	11.4	10.9	10.8	10.3	10.3	11.4	11.7	11.8	12.2	12.7
Austria S290726Y	19.7	19.3	18.9	19.0	18.9	18.9	19.2	19.4	19.1	18.8	18.4	17.8	18.1	19.7	19.8	19.1	19.3	19.6
Portugal S796822Y	11.0	10.7	10.9	10.8	11.2	11.5	12.1	13.3	13.8	14.4	14.5	14.6	15.1	17.0	17.1	17.4	18.0	18.9
Slovenia S417107Y	15.3	15.7	15.8	15.7	15.9	15.9	15.9	15.9	15.8	15.7	15.3	14.3	14.7	16.5	17.2	17.6	17.6	17.7
Slovakia S611616Y	14.2	13.6	13.6	14.3	13.5	13.6	13.7	11.9	12.3	12.4	11.9	11.6	11.4	13.8	14.1	13.6	13.8	13.9
Finland S424417Y	21.4	19.7	18.3	17.7	16.2	15.9	16.3	16.8	16.6	16.5	16.0	15.1	15.3	18.2	18.3	18.0	18.8	19.7
Euro area S274092Y	17.1	17.0	16.6	16.5	16.0	16.0	16.3	16.5	16.4	16.3	15.9	15.6	15.9	17.6	17.6	17.3	17.6	17.9
Euro area excluding Italy .. S304509Y	17.2	17.0	16.6	16.5	16.0	16.0	16.3	16.5	16.3	16.1	15.7	15.3	15.5	17.3	17.2	16.9	17.2	17.4
Bulgaria S653194Y	10.3	9.0	10.2	11.2	12.4	11.7	11.9	11.2	11.2	10.6	10.2	9.6	10.1	12.1	12.6	11.9	11.6	12.5
Czech Republic S298929Y	11.4	12.0	12.1	12.6	12.9	12.7	13.0	12.8	12.3	12.0	12.2	12.5	12.4	13.5	13.7	13.8	13.9	14.0
Denmark S688004Y	18.9	17.9	17.4	16.8	16.2	16.3	16.4	17.1	16.9	16.3	15.4	14.9	14.7	16.7	16.9	17.1	17.2	17.2
Croatia	13.8	14.0	14.3	14.1	13.6
Latvia S043578Y	12.9	12.5	13.1	14.8	12.5	11.3	10.2	9.5	9.2	8.4	8.1	7.1	8.1	12.6	12.5	10.6	9.6	9.6
Lithuania S701652Y	8.5	9.6	10.8	12.2	11.5	11.3	10.0	9.8	9.7	9.3	9.2	9.8	11.6	16.3	14.5	12.6	12.1	11.3
Hungary S841405Y	13.4	12.6	13.1	13.3	12.8	12.7	13.3	13.9	14.0	14.5	15.0	15.5	15.9	16.5	16.0	15.6	15.5	15.3
Poland S589199Y	17.1	17.1	16.3	16.8	16.0	16.9	17.0	16.9	16.0	15.7	15.2	14.2	14.0	14.7	14.8	14.1	14.2	14.6
Romania S999507Y	8.8	9.4	10.5	10.4	9.7	9.7	9.3	8.4	8.7	8.9	8.8	9.2	10.4	12.7	12.9	12.0	11.3	10.8
Sweden S215670Y	17.1	16.6	16.4	16.1	15.6	15.7	15.9	16.4	16.0	15.7	15.2	14.4	14.4	15.7	14.7	14.1	14.5	14.8
United Kingdom S802598Y	14.3	13.8	13.2	12.7	12.5	12.8	12.8	12.7	12.7	12.6	12.4	12.5	13.0	14.9	14.9	14.9	15.5	15.3
EU excluding euro area ... S319584Y	15.0	14.5	14.0	13.7	13.3	13.6	13.6	13.7	13.5	13.3	13.0	12.9	13.3	14.9	14.9	14.6	15.0	14.9
EU S102887Y	16.6	16.4	16.0	15.8	15.3	15.4	15.6	15.8	15.6	15.5	15.1	14.8	15.2	16.9	16.9	16.6	16.9	17.1
EU excluding Italy. S881151Y	16.6	16.3	15.9	15.7	15.2	15.3	15.5	15.6	15.5	15.3	14.9	14.5	14.9	16.6	16.5	16.2	16.5	16.6
United States S926645Y	11.2	10.9	10.6	10.3	10.2	10.8	11.4	11.5	11.5	11.4	11.6	11.8	12.7	14.7	15.0	14.7	14.4
Japan S014742Y	8.6	8.7	9.3	9.9	10.0	10.4	10.9	11.0	11.1	11.2	11.5	11.6	12.1	13.7	13.8	14.4	14.3
Canada S338041Y	10.4	9.8	9.7	9.3	8.7	9.0	8.9	8.7	8.5	8.3	8.5	8.5	8.6	9.9	9.7	9.4	9.4

Capital expenditure

(as a percentage of GDP)

	1996	1997	1998	1999	2000	2001	2002	2003	2004	2005	2006	2007	2008	2009	2010	2011	2012	2013
Italy S368005Y	3.7	3.4	3.8	3.9	2.6	4.2	3.6	4.3	3.9	4.1	5.0	4.0	3.8	4.4	3.4	3.1	3.1	2.7
Belgium S526786Y	2.9	3.2	3.0	3.3	3.2	2.5	2.6	3.2	2.5	5.2	2.5	2.7	2.7	3.4	2.8	3.3	3.8	2.8
Germany S538427Y	3.2	3.0	3.2	3.2	0.8	3.4	3.3	3.2	3.0	2.9	2.7	2.6	2.8	3.1	3.9	2.8	2.5	2.4
Estonia S925772Y	4.9	4.8	5.7	4.7	4.2	4.5	5.7	4.7	3.8	4.0	5.1	5.9	6.6	5.6	3.3	3.6	6.3	5.0
Ireland S119278Y	3.6	3.6	3.6	5.8	4.4	5.3	5.0	4.5	4.4	4.4	4.6	5.6	7.1	7.2	24.1	7.0	2.7	2.5
Greece S121110Y	3.9	5.5	5.8	5.8	6.5	5.9	5.4	5.6	6.2	4.4	4.7	5.0	5.7	5.2	4.0	3.2	6.6	15.2
Spain S295998Y	4.9	4.7	4.9	4.8	4.6	4.8	5.1	4.8	5.2	4.9	5.1	5.4	5.4	5.8	5.1	4.1	6.3	2.5
France S672056Y	4.2	4.0	3.8	4.1	3.9	3.9	3.9	3.9	4.0	4.2	4.1	4.2	4.2	4.4	3.9	3.9	4.0	4.0
Cyprus S147836Y	3.7	4.0	3.4	3.2	3.5	3.4	3.6	4.1	4.2	3.6	3.8	4.0	4.0	5.5	5.2	4.5	3.8	3.7
Luxembourg S932568Y	6.0	4.2	5.5	5.2	4.8	3.8	6.2	5.9	5.9	6.0	5.3	4.5	4.6	5.5	5.6	5.0	4.8	4.3
Malta S264077Y	4.3	4.5	4.9	5.1	4.5	4.1	4.3	7.7	4.0	4.9	4.7	4.0	3.3	3.1	3.4	3.2	3.6	4.1
Netherlands S429186Y	3.3	3.2	3.2	3.4	2.9	4.1	4.2	4.2	3.5	3.5	3.3	3.6	4.0	5.2	4.8	4.0	4.0	3.3
Austria S348936Y	4.7	4.0	4.2	3.8	3.2	3.5	3.2	3.2	6.7	3.3	3.2	3.7	3.5	3.7	4.2	3.5	4.1	3.1
Portugal S848294Y	5.4	6.0	5.9	5.4	4.6	5.4	4.4	4.7	4.9	4.6	3.5	3.3	3.1	4.0	5.7	4.0	2.9	2.4
Slovenia S467167Y	4.2	3.9	4.9	5.3	4.7	4.6	4.0	4.6	4.5	4.0	4.2	5.1	5.5	5.5	4.9	5.1	3.7	14.3
Slovakia S653558Y	10.2	7.2	6.2	8.5	12.1	5.2	6.4	3.0	2.8	3.8	3.0	2.7	3.1	4.5	3.5	3.7	3.1	2.7
Finland S466843Y	4.3	3.3	3.1	3.5	2.8	2.9	3.1	3.0	3.1	2.9	2.6	2.7	2.9	3.3	2.9	2.9	2.9	3.1
Euro area S328718Y	3.8	3.6	3.7	3.9	2.8	3.9	3.8	3.9	3.9	3.9	3.9	3.8	3.9	4.3	4.4	3.5	3.7	3.2
Euro area excluding Italy . . S338272Y	3.8	3.7	3.7	3.9	2.8	3.9	3.9	3.8	3.9	3.8	3.6	3.7	3.9	4.2	4.6	3.6	3.8	3.3
Bulgaria S702422Y	0.7	1.8	4.5	4.2	4.0	3.7	4.0	3.4	3.6	3.8	3.9	8.3	5.7	5.2	4.9	3.7	4.0	4.6
Czech Republic S343058Y	7.9	7.9	9.0	6.8	6.1	8.3	8.6	11.4	7.1	7.1	6.5	6.0	6.2	6.4	5.6	5.1	6.4	3.9
Denmark S740996Y	2.6	2.5	2.4	2.3	2.3	2.2	2.2	2.0	2.3	2.1	2.3	2.3	2.8	2.6	3.0	3.4	4.8	2.9
Croatia	5.0	5.6	6.0	3.7	3.9
Latvia S086419Y	3.3	2.0	3.6	4.3	3.7	3.4	3.6	2.8	4.2	5.0	7.1	6.9	5.7	5.9	6.0	5.2	5.0	4.3
Lithuania S740297Y	4.9	15.1	3.7	3.5	4.8	4.4	4.0	3.5	4.0	3.8	4.5	6.1	5.5	4.5	5.0	4.9	3.7	3.5
Hungary S907975Y	4.6	5.3	7.7	5.2	6.1	6.7	9.0	5.6	4.8	5.4	6.3	5.6	4.2	4.4	4.7	5.9	4.9	5.2
Poland S652519Y	8.4	4.6	4.8	3.9	2.9	4.0	4.0	4.5	3.9	4.4	4.8	4.8	5.5	6.2	6.4	6.2	4.9	4.1
Romania S044398Y	4.5	3.2	2.8	3.1	4.5	4.1	4.5	4.9	5.0	4.9	6.6	7.7	7.7	6.3	6.6	7.9	5.8	5.3
Sweden S292296Y	3.5	3.6	2.4	3.3	2.9	3.0	3.3	3.1	3.0	3.3	3.2	3.2	3.3	3.6	3.5	3.6	3.7	3.6
United Kingdom S848927Y	2.5	1.9	1.9	1.9	-0.5	2.3	2.3	2.6	2.6	2.7	2.9	2.9	5.2	5.1	3.7	3.0	3.0	2.6
EU excluding euro area . . . S349588Y	3.3	2.7	2.6	2.5	0.8	2.8	3.0	3.2	3.0	3.2	3.4	3.5	5.0	5.0	4.2	3.9	3.7	3.2
EU S132691Y	3.7	3.4	3.4	3.5	2.3	3.6	3.6	3.7	3.7	3.7	3.7	3.7	4.2	4.4	4.3	3.6	3.7	3.2
EU excluding Italy S934247Y	3.7	3.4	3.4	3.5	2.2	3.6	3.6	3.6	3.6	3.6	3.6	3.7	4.2	4.4	4.5	3.7	3.8	3.3
United States S019353Y	3.8	3.6	3.6	3.7	3.7	3.8	4.0	4.0	4.0	4.1	3.8	4.1	4.6	5.2	4.6	4.2	3.8
Japan S580383Y	5.0	4.4	4.1	4.1	5.3	4.6	4.6
Canada S889267Y

Public Finance Statistics in the European Union

Table 22

TUEE0350

Investment

(as a percentage of GDP)

	1996	1997	1998	1999	2000	2001	2002	2003	2004	2005	2006	2007	2008	2009	2010	2011	2012	2013
Italy S230367Y	2.2	2.2	2.3	2.4	2.3	2.4	1.7	2.5	2.4	2.4	2.4	2.3	2.2	2.5	2.2	2.0	1.9	1.7
Belgium S431180Y	1.7	1.7	1.7	1.9	2.0	1.7	1.7	1.6	1.6	1.7	1.6	1.6	1.6	1.7	1.6	1.7	1.8	1.6
Germany S430680Y	2.1	1.9	1.9	2.0	1.9	1.8	1.8	1.6	1.5	1.4	1.5	1.5	1.6	1.8	1.7	1.7	1.5	1.6
Estonia S826745Y	4.4	4.3	4.9	4.2	3.7	4.1	5.3	4.4	3.8	4.0	4.7	5.1	5.4	5.1	3.9	4.1	5.4	4.3
Ireland S014598Y	2.4	2.5	2.7	3.1	3.5	4.2	4.2	3.6	3.5	3.5	3.8	4.7	5.3	3.7	3.4	2.4	1.9	1.7
Greece S027748Y	2.9	3.1	3.2	3.2	3.7	3.6	3.4	3.5	3.6	2.8	3.4	3.4	3.7	3.1	2.3	1.7	1.8	1.9
Spain S209848Y	3.1	3.1	3.3	3.4	3.2	3.3	3.5	3.6	3.4	3.6	3.7	4.0	4.0	4.5	4.0	3.0	1.7	1.5
France S551972Y	3.1	2.9	2.8	2.9	3.1	3.0	2.9	3.0	3.1	3.3	3.2	3.3	3.2	3.4	3.1	3.1	3.2	3.2
Cyprus S986203Y	3.3	3.4	2.9	2.5	3.0	2.9	3.0	3.4	4.1	3.1	3.0	3.0	3.1	4.2	3.8	3.6	2.5	2.1
Luxembourg S825798Y	4.9	3.0	4.5	4.3	3.8	4.3	4.9	4.6	4.3	4.5	3.6	3.3	3.4	3.9	4.1	3.8	3.5	3.1
Malta S199759Y	3.3	3.6	4.4	4.3	3.7	3.3	4.0	4.5	3.7	4.6	3.9	3.7	2.3	2.3	2.1	2.5	3.0	2.7
Netherlands S327063Y	3.3	2.9	3.0	3.0	3.1	3.3	3.5	3.6	3.2	3.3	3.3	3.3	3.5	3.8	3.6	3.3	3.3	3.2
Austria S246179Y	2.8	2.0	1.9	1.8	1.6	1.2	1.4	1.3	1.2	1.2	1.1	1.1	1.1	1.2	1.1	1.0	1.0	1.0
Portugal S745487Y	4.6	5.3	4.7	4.5	4.1	4.4	4.1	3.9	3.8	3.6	2.8	2.7	2.9	3.0	3.8	2.6	1.7	1.4
Slovenia S376172Y	3.1	2.9	3.0	3.4	3.2	3.2	3.0	3.2	3.4	3.2	3.7	4.2	4.4	4.6	4.5	3.5	3.3	3.7
Slovakia S560134Y	3.8	5.4	4.0	2.9	2.8	3.1	3.3	2.6	2.4	2.1	2.2	1.9	2.0	2.3	2.6	2.7	2.2	2.1
Finland S386606Y	2.8	3.0	2.8	2.7	2.4	2.5	2.6	2.8	2.8	2.5	2.3	2.4	2.5	2.8	2.5	2.5	2.6	2.8
Euro area S359297Y	2.6	2.4	2.5	2.5	2.5	2.5	2.4	2.6	2.5	2.5	2.5	2.6	2.6	2.8	2.6	2.3	2.1	2.1
Euro area excluding Italy . . S369605Y	2.7	2.5	2.5	2.6	2.6	2.6	2.6	2.6	2.5	2.5	2.6	2.6	2.7	2.9	2.6	2.4	2.2	2.1
Bulgaria S610645Y	0.7	1.5	3.6	3.8	3.6	3.4	3.1	2.9	3.2	3.4	4.0	5.2	5.6	4.9	4.6	3.4	3.3	4.1
Czech Republic S250108Y	4.4	4.1	4.1	3.2	3.5	3.0	3.1	6.8	4.2	4.3	4.5	4.2	4.6	5.1	4.2	3.6	3.2	2.8
Denmark S631013Y	1.9	1.8	1.7	1.7	1.7	1.9	1.8	1.6	1.9	1.8	1.9	1.9	1.9	2.0	2.2	2.2	2.6	2.3
Croatia	3.6	2.4	2.3	2.0	2.2
Latvia S006333Y	2.3	1.2	1.3	1.4	1.3	1.1	1.3	2.4	3.1	3.1	4.6	5.7	4.8	4.3	3.7	4.2	4.2	3.9
Lithuania S653850Y	2.4	2.3	2.5	2.6	2.4	2.2	2.9	3.0	3.5	3.5	4.2	5.2	4.9	3.9	4.6	4.4	3.7	3.4
Hungary S781970Y	1.5	2.3	3.1	2.9	3.3	3.7	4.9	3.5	3.6	4.0	4.5	3.7	2.9	3.1	3.4	3.1	3.5	3.9
Poland S525099Y	3.6	3.9	3.9	3.5	2.4	3.4	3.4	3.3	3.4	3.4	3.9	4.2	4.6	5.2	5.6	5.7	4.6	3.9
Romania S945348Y	3.9	2.7	1.8	1.6	3.4	2.7	3.4	3.5	3.0	3.9	5.1	6.2	6.6	5.9	5.7	5.5	4.7	4.5
Sweden S145226Y	3.4	3.0	3.1	3.1	2.8	2.9	3.1	2.9	2.9	3.0	3.0	3.1	3.3	3.5	3.5	3.4	3.5	3.3
United Kingdom S745751Y	1.5	1.2	1.3	1.3	1.2	1.5	1.6	1.6	1.8	0.7	1.8	1.9	2.3	2.7	2.5	2.2	2.2	2.0
EU excluding euro area . . . S379617Y	2.1	1.8	1.9	1.8	1.7	2.0	2.1	2.2	2.2	1.6	2.5	2.6	3.0	3.3	3.2	3.0	2.9	2.6
EU S042319Y	2.5	2.3	2.3	2.4	2.3	2.4	2.3	2.5	2.4	2.3	2.5	2.6	2.7	2.9	2.7	2.5	2.3	2.2
EU excluding Italy S825591Y	2.5	2.3	2.3	2.4	2.3	2.4	2.4	2.5	2.4	2.3	2.5	2.6	2.8	3.0	2.8	2.6	2.4	2.3
United States S927352Y	3.7	3.6	3.5	3.6	3.6	3.7	3.8	3.8	3.8	3.7	3.7	3.8	4.0	4.2	4.1	3.8	3.6
Japan S470251Y	6.2	5.6	5.4	5.8	5.1	5.0	4.7	4.2	3.9	3.6	3.3	3.1	3.0	3.4	3.3	3.1	3.2
Canada S779271Y	3.0	2.9	2.8	2.7	2.9	3.1	3.2	3.2	3.3	3.4	3.6	3.7	3.9	4.5	4.7	4.3	4.2

METHODOLOGICAL APPENDIX

GENERAL INDICATIONS

The annual series refer to the consolidated general government accounts and gross debt of the European Union countries and of the remaining G-7 countries (the United States, Japan and Canada). For the European countries this Supplement refers to the data obtained for the Excessive deficit procedure laid down in the Maastricht Treaty. For these countries total revenue and total expenditure are defined according to Commission Regulation (EC) No. 1500/2000. The data on Italy include - as memorandum items - revenue (total and current) and expenditure (total and current, including and excluding interest payments) defined in accordance with the traditional format for general government accounts. In the transition from the traditional account aggregates to those computed in accordance with Commission Regulation (EC) No. 1500/2000, on the one hand, gross operating surplus and indirect taxes on products paid by general government are excluded from both revenue and expenditure items; on the other hand, proceeds from the sale of goods and services, residual sales and production for own use are added to revenue rather than deducted from expenditure. By construction the adjustments have the same impact on revenue and expenditure, leaving the balances unaltered; they affect "other current revenue" and "other current expenditure", residual items not explicitly mentioned in this Supplement.

The time series cover the period 1980-2013. The paper version of the Supplement provides data only for 1996-2013; those for the years 1980-1995 are available in the electronic version of the Supplement.

The sources used are as follows:

- Istat, for the general government accounts of Italy;
- for the other European countries, European Commission, DG II Economic and Financial Affairs, General Government Data, October 2004 (data based on the 1979 version of the European System of Accounts - ESA79) and May 2014 (data based on the 1995 version of the European System of Accounts - ESA95); for data on capital taxes based on ESA79, European Commission, March 1999, and Eurostat, supplemented by data supplied directly by the Commission;
- OECD, National Accounts Statistics Database, at www.oecd-ilibrary.org, May 2014 for the items of the economic accounts of Canada, Japan and the United States;
- OECD, Economic Outlook: Statistics and Projections Database, at www.oecd-ilibrary.org, May 2014 for the GDP and debt of Canada, Japan and the United States.

For Italy, the data are based on ESA95 for the entire period 1980-2013.

For the other European countries, data based on ESA95 are available for different periods. For comparability, this Supplement sets the accounting change in the same year for every country. The data for 1980-1994 are based on ESA79 and those from 1995 onwards on ESA95.

For the individual items of the accounts and for gross debt, averages have been calculated for: (1) the 17 countries belonging to the euro area as of 31 December 2013 (Belgium, Germany, Estonia, Ireland, Greece, Spain, France, Italy, Cyprus, Luxembourg, Malta, the Netherlands, Austria, Portugal, Slovenia, Slovakia and Finland), both including and excluding Italy; (2) all the EU countries, both including and excluding Italy; (3) the EU countries not belonging to the euro area as of 31 December 2013. The averages are computed as ratios of the sum, for the relevant countries, of the values of the variable under consideration to the sum, for the same countries, of the values of GDP. The values of GDP are those

determined for the Excessive deficit procedure. The values of the variables used in the calculations are expressed in ECU until 1994, in euros from 1995 onwards; national currency data have been converted into ECU or euros using the average exchange rate of each year. Where a figure is missing for a country, the average has been calculated omitting that country. Averages have been computed using data (including those for Italy) based on ESA79 until 1994. With reference to debt, averages are computed excluding intergovernmental lending in the context of the financial crisis (both bilateral loans and loans made through the European Financial Stability Facility are excluded). Data on intergovernmental loans are provided by Eurostat (Press release 64, 23 April 2014).

For the sake of comparability, the euro area includes Estonia, Greece, Cyprus, Malta, Slovenia and Slovakia in all the years considered.

Data for Latvia, which adopted the euro on 1 January 2014, are not included among those of the euro area countries in this edition of the Supplement.

The figures for Germany up to and including 1990 refer to the country's western regions.

The data referring to the EU countries include the proceeds of the sale of UMTS licences. These proceeds are recorded, with a negative sign, among capital expenditure.

Data are processed according to SNA 2008 for the United States and Canada, and to SNA93 for Japan.

Because of rounding, the sum of the separate items may sometimes differ from the total shown.

Prepared by Mauro Bucci; technical assistance by Diana Nicoletti and Attilio Mattiocco.

NOTES TO THE TABLES

The order of the tables in the following notes is based on their code numbers. The notes to each table are set out below; together with references to the "Notes to the classification variables" section where appropriate.

TUEE0100 - Net borrowing (+)/lending (-)

The balance of the consolidated general government accounts (excluding financial transactions). The item corresponds to the net resources the general government makes available to other sectors.

TUEE0110 - Primary net borrowing (+)/lending (-)

Net borrowing or lending excluding interest payments (see the note to Table TUEE0280).

TUEE0120 - Current account balance

The difference between current expenditure and current revenue (see the notes to Tables TUEE0160 and TUEE0260). A positive balance indicates a deficit, a negative balance a surplus, i.e. public saving.

TUEE0130 - Capital account balance

The difference between capital expenditure and capital revenue.

TUEE0140 - Gross public debt

For the EU countries, the definition is that adopted for the Excessive deficit procedure provided for in the Treaty on the European Union (on the basis of the methods specified in Council Regulation No. 479/2009). The aggregate refers to general government total gross debt at the nominal value outstanding at the end of the year, with the exception of those liabilities of which the corresponding financial assets are held by the sector of general government.

Following Eurostat's decision of 31 July 2012, from 1997 onwards data concerning Italy include trade credits assignments without recourse to non-bank financial intermediaries.

TUEE0150 - Total revenue (regulation EC 1500/2000)

The sum of current revenue and capital revenue. For the EU countries data on total revenue are defined according to Commission Regulation (EC) No. 1500/2000. The data on Italy include - as memorandum items - total revenue defined in accordance with the traditional

format for general government accounts. In the transition from the traditional account aggregates to those calculated in accordance with Commission Regulation (EC) No. 1500/2000, gross operating surplus and indirect taxes on products paid by general government are excluded from revenue while proceeds from the sale of goods and services, residual sales and production for own use are added. An adjustment of the same size is made for total expenditure, implying a null impact on net borrowing.

TUEE0160 - Current revenue (regulation EC 1500/2000)

The sum of direct taxes, indirect taxes, social security contributions and other current revenue. For the EU countries, data on current revenue are defined according to Commission Regulation (EC) No. 1500/2000. The data on Italy include - as memorandum items - current revenue defined in accordance with the traditional format for general government accounts. In the transition from the traditional account aggregates to those calculated in accordance with Commission Regulation (EC) No. 1500/2000, gross operating surplus and indirect taxes on products paid by general government are excluded from current revenue while proceeds from the sale of goods and services, residual sales and production for own use are added. An adjustment of the same size is made for current expenditure, implying a null impact on the current balance.

TUEE0170 - Tax revenue and social security contributions

The sum of direct and indirect taxes, social security contributions and capital taxes (see the notes to Tables TUEE0210, TUEE0220 and TUEE0230).

TUEE0180 - Tax revenue and social security contributions, excluding capital taxes

The sum of direct and indirect taxes and social security contributions (see the notes to Tables TUEE0210, TUEE0220 and TUEE0230).

TUEE0210 - Direct taxes

Taxes on income and wealth due to general government.

TUEE0220 - Indirect taxes

Taxes on the production and importation of goods and services due to general government.

TUEE0230 - Social security contributions

The sum of actual social security contributions paid by workers and employers (directly or through ad hoc agencies) and imputed social security contributions. The figures for Canada do not include imputed social security contributions.

TUEE0240 - Total expenditure (regulation EC 1500/2000)

The sum of current and capital expenditure (see the notes to tables TUEE0260 and TUEE0400). For the EU countries data on current expenditure are defined according to Commission Regulation (EC) No. 1500/2000. Interest payments are those determined for the Excessive deficit procedure (see the note to Table TUEE0280). The data on Italy include - as memorandum items - current expenditure defined in accordance with the traditional format for general government accounts. In the transition from the traditional account aggregates to those calculated in accordance with Commission Regulation (EC) No. 1500/2000, proceeds from the sale of goods and services, residual sales and production for own use, which are computed as minor expenses in the traditional accounts, are excluded from current expenditure, while gross operating surplus and indirect taxes on products paid by general government are added. An adjustment of the same size is made for total revenue, implying a null impact on net borrowing.

TUEE0250 - Total expenditure, excluding interest payments (regulation EC 1500/2000)

The difference between total expenditure and interest payments (see the notes to Tables TUEE0240 and TUEE0280).

TUEE0260 - Current expenditure (regulation EC 1500/2000)

The sum of current transfers, interest payments and final consumption expenditure. For the EU countries, data on current expenditure are defined according to Commission Regulation (EC) No. 1500/2000. Interest payments are those determined for the Excessive deficit procedure (see the note to Table TUEE0280). The data on Italy include - as memorandum items - current expenditure defined in accordance with the traditional format for general government accounts. In the transition from the traditional account aggregates to those calculated in accordance with Commission Regulation (EC) No. 1500/2000, proceeds from the sale of goods and services,

residual sales and production for own use, which are computed as minor expenses in the traditional accounts, are excluded from current expenditure, while gross operating surplus and indirect taxes on products paid by general government are added. An adjustment of the same size is made for current revenue, implying a null impact on the current balance.

TUEE0270 - Current expenditure, excluding interest payments (regulation EC 1500/2000)

The difference between current expenditure and interest payments (see the notes to Tables TUEE0260 and TUEE0280).

TUEE0280 - Interest payments

Interest payments and other borrowing costs, including the effects of swaps and forward rate agreements.

TUEE0290 - Final consumption expenditure

Expenditure incurred by general government (compensation of employees, purchases of goods and services, social transfers in kind related to expenditure on products supplied to households via market producers and consumption of fixed capital) for the satisfaction of individual or collective needs.

TUEE0300 - Compensation of employees

General government payments in cash or in kind to employees, including net earnings and actual and imputed social security contributions.

TUEE0330 - Social benefits other than social transfers in kind

Social benefits, including social security and social assistance benefits in cash.

TUEE0350 - Investment

Gross (with respect to depreciation) fixed capital formation, consisting of the value of purchases less sales of durable goods to be utilized in production processes for a period longer than one year. The data based on ESA79 include net purchases of land.

TUEE0400 - Capital expenditure

Investment (see the note to table TUEE0350), net acquisition of other non-financial assets and capital transfers. The net acquisition of other non-financial assets includes the proceeds of the sale of UMTS licences (with a negative sign). In EU countries, these proceeds were mainly recorded in 2000.

GENERAL INFORMATION

- I - Unless indicated otherwise, figures have been computed by the Bank of Italy.
- II - Symbols and Conventions:
- the phenomenon in question does not occur;
 - the phenomenon occurs but its value is not known;
 - .. the value is known but is nil or less than half the final digit shown.
- Figures in parentheses in roman type () are provisional. those in parentheses in italics () are estimated.
- III - The tables are identified both by a number and by an alphanumeric code that defines the content of the table in the database in the electronic archive in which information to be released to the public is held. A similar code identifies the different aggregates shown in each table.
- IV - The methodological notes in the last part of the Supplement are identified by electronic codes that refer to the tables and, within each table, to the individual aggregates. Notes that refer to a single observation are also identified by the date of that observation.

SUPPLEMENTS TO THE STATISTICAL BULLETIN

Money and Banking (monthly)

The Financial Market (monthly)

The Public Finances, borrowing requirement and debt (monthly)

Balance of Payments and International Investment Position (monthly)

Financial Accounts (quarterly)

Payment System (half yearly)

Public Finance Statistics in the European Union (half yearly)

Local Government Debt (half yearly)

Household Wealth in Italy (annual)

Sample Surveys (irregular)

Methodological Notes (irregular)

All the supplements are available on the Bank of Italy's site (www.bancaditalia.it).

Requests for clarifications concerning data contained in this publication can be sent by e-mail to statistiche@bancaditalia.it

