



BANCA D'ITALIA  
EUROSISTEMA

# Supplements to the Statistical Bulletin

Monetary and Financial Indicators

Public Finance Statistics in the European Union

New series

Volume XIX - 6 October 2009

Number

49

## Contents

Figure 1	-	Net borrowing (+)/lending(-) in 2008
Figure 2	-	Gross public debt in 2008
Figure 3	-	Total revenue (Regulation EC 1500/2000) in 2008
Figure 4	-	Total expenditure (Regulation EC 1500/2000) in 2008
Figure 5	-	Tax revenue and social security contributions in the leading EU countries
Figure 6	-	Current expenditure, excluding interest payments (Regulation EC 1500/2000) in the leading EU countries
Figure 7	-	Interest payments in the leading EU countries
Figure 8	-	Investment in the leading EU countries
Table 1	- (TUEE0100)-	Net borrowing (+)/lending (-)
Table 2	- (TUEE0110)-	Primary net borrowing (+)/lending (-)
Table 3	- (TUEE0120)-	Current account balance
Table 4	- (TUEE0130)-	Capital account balance
Table 5	- (TUEE0140)-	Gross public debt
Table 6	- (TUEE0150)-	Total revenue (Regulation EC 1500/2000)
Table 7	- (TUEE0160)-	Current revenue (Regulation EC 1500/2000)
Table 8	- (TUEE0170)-	Tax revenue and social security contributions
Table 9	- (TUEE0180)-	Tax revenue and social security contributions, excluding capital taxes
Table 10	- (TUEE0210)-	Direct taxes
Table 11	- (TUEE0220)-	Indirect taxes
Table 12	- (TUEE0230)-	Social security contributions
Table 13	- (TUEE0240)-	Total expenditure (Regulation EC 1500/2000)
Table 14	- (TUEE0250)-	Total expenditure, excluding interest payments (Regulation EC 1500/2000)
Table 15	- (TUEE0260)-	Current expenditure (Regulation EC 1500/2000)
Table 16	- (TUEE0270)-	Current expenditure, excluding interest payments (Regulation EC 1500/2000)
Table 17	- (TUEE0280)-	Interest payments
Table 18	- (TUEE0290)-	Final consumption expenditure
Table 19	- (TUEE0300)-	Compensation of employees
Table 20	- (TUEE0330)-	Social benefits other than social transfers in kind
Table 21	- (TUEE0400)-	Capital expenditure
Table 22	- (TUEE0350)-	Investment
Methodological appendix		
General information		

## Public Finance Statistics in the European Union

Figure 1

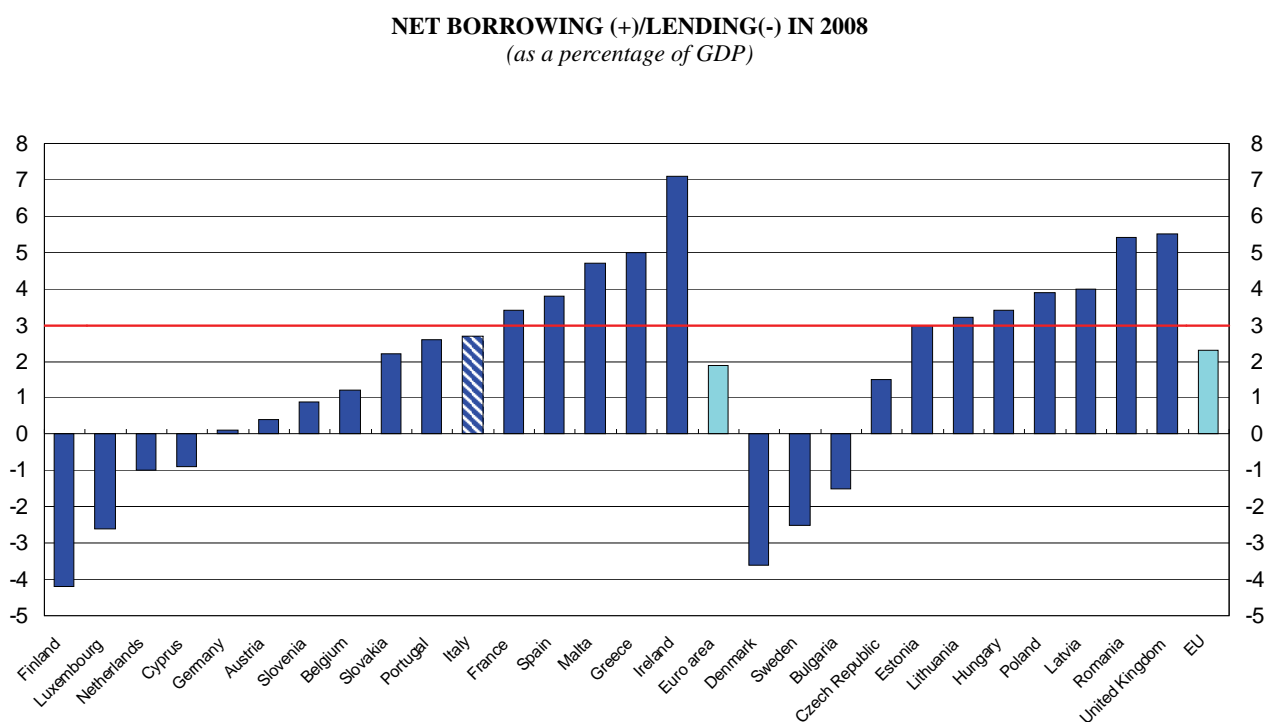
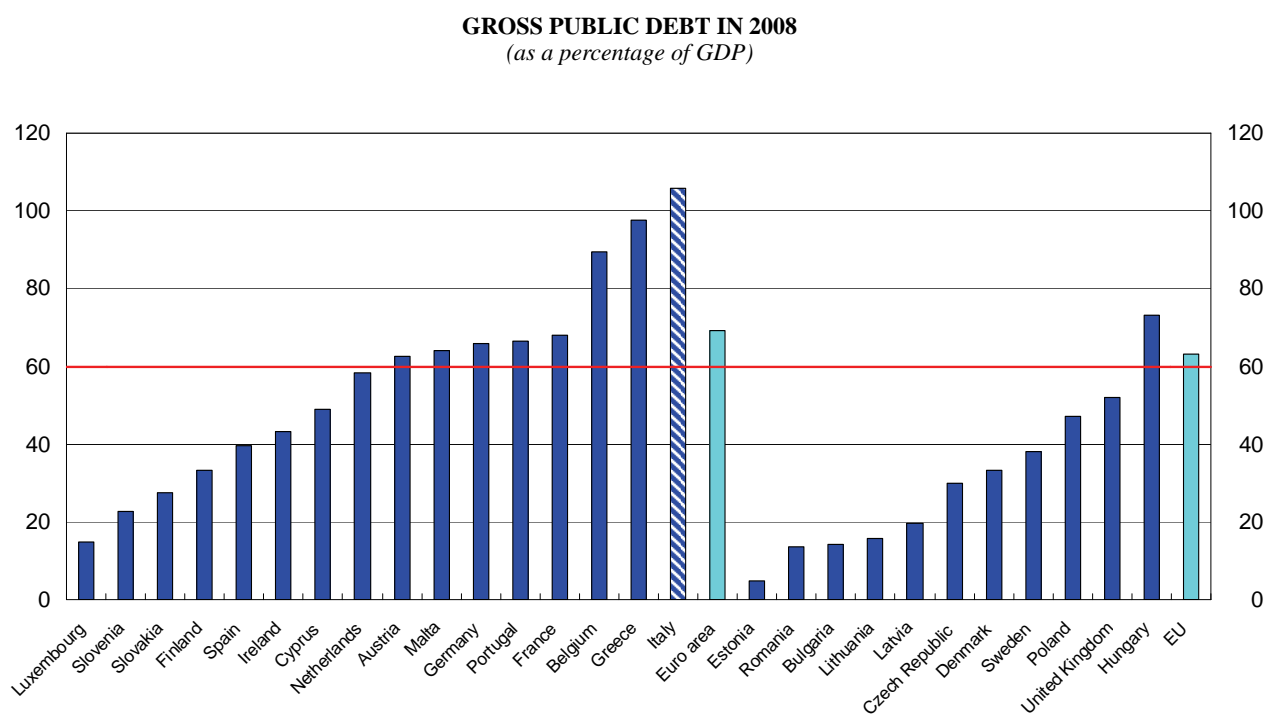


Figure 2



## Public Finance Statistics in the European Union

Figure 3

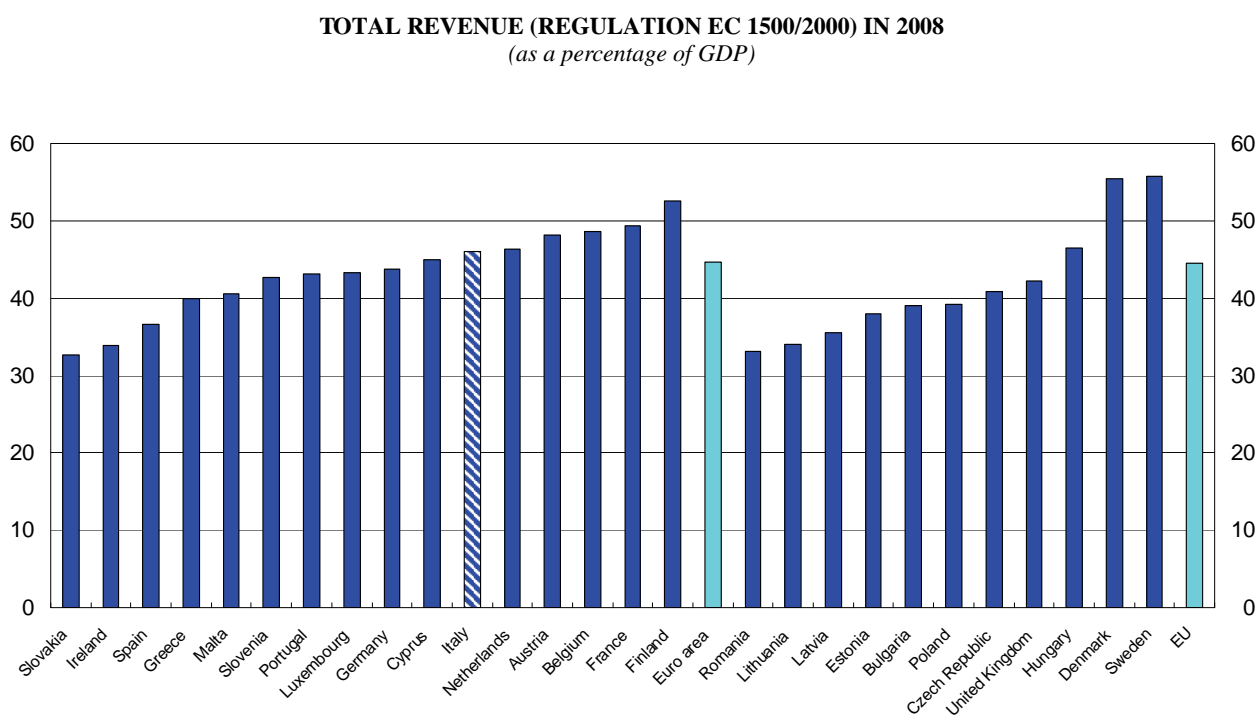
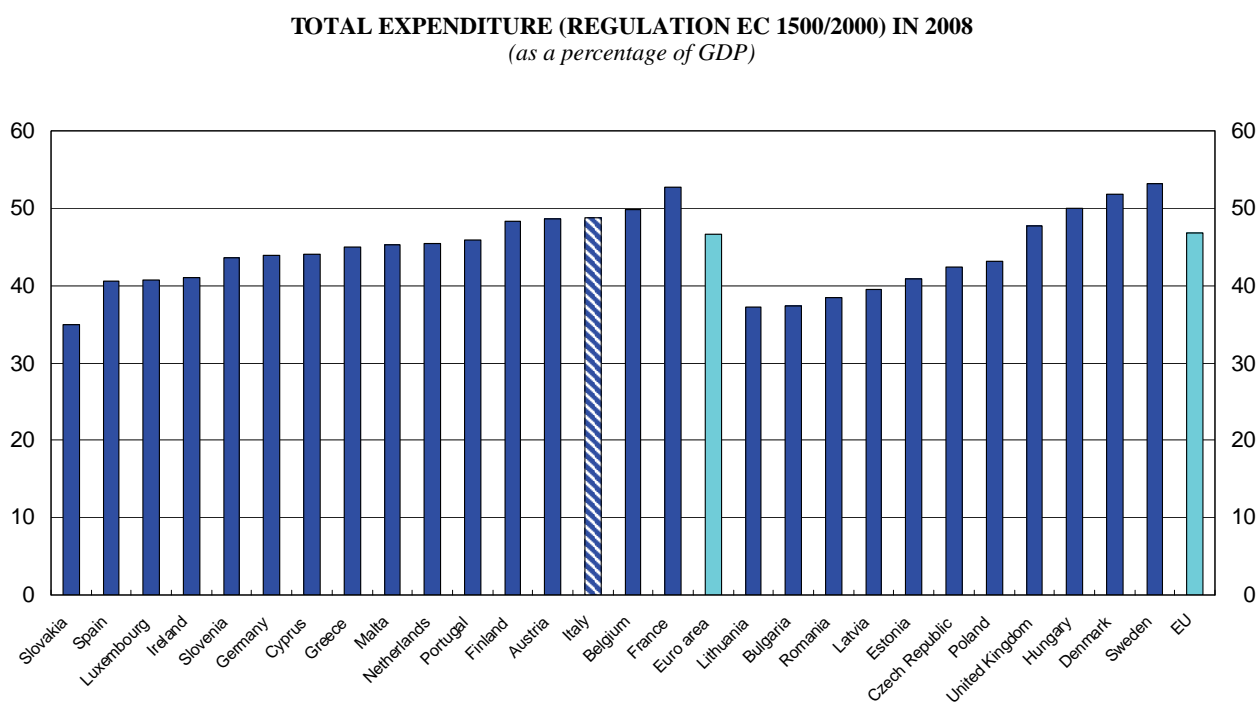


Figure 4



## Public Finance Statistics in the European Union

Figure 5

### TAX REVENUE AND SOCIAL SECURITY CONTRIBUTIONS IN THE LEADING EU COUNTRIES (as a percentage of GDP)

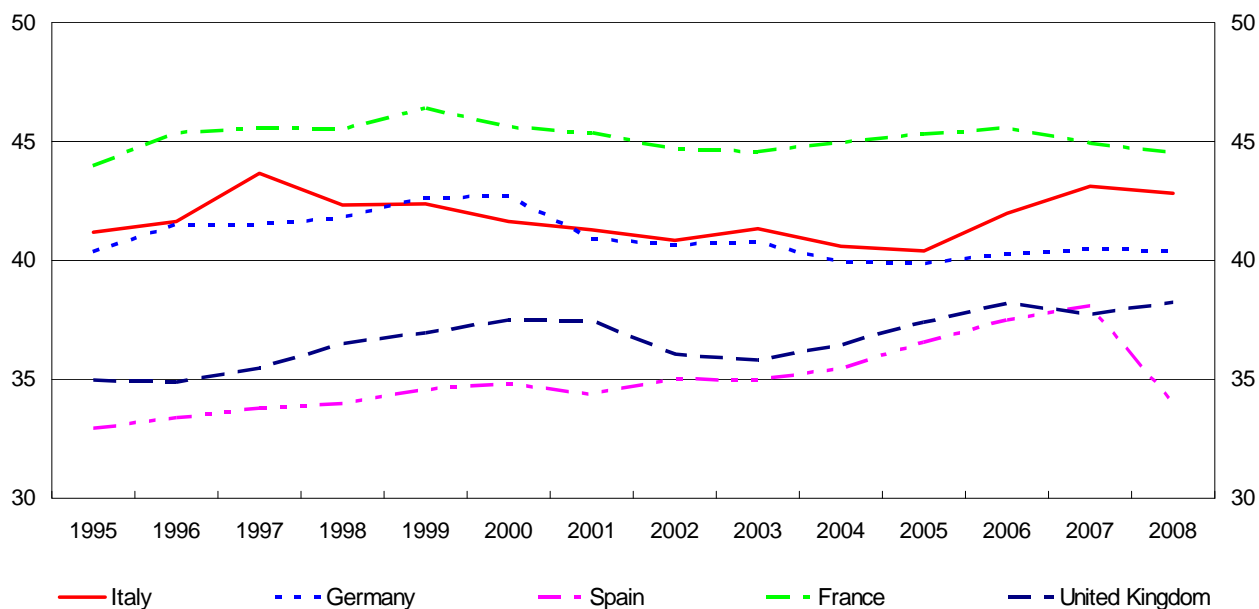


Figure 6

### CURRENT EXPENDITURE, EXCLUDING INTEREST PAYMENTS (REGULATION EC 1500/2000) IN THE LEADING EU COUNTRIES (as a percentage of GDP)

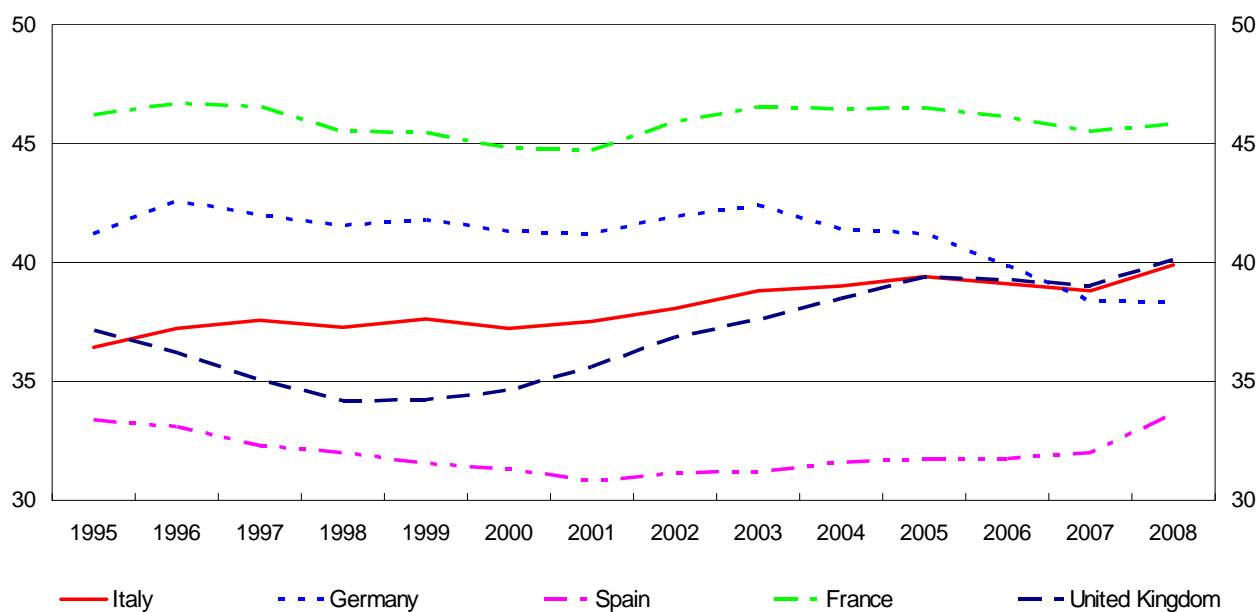


Figure 7

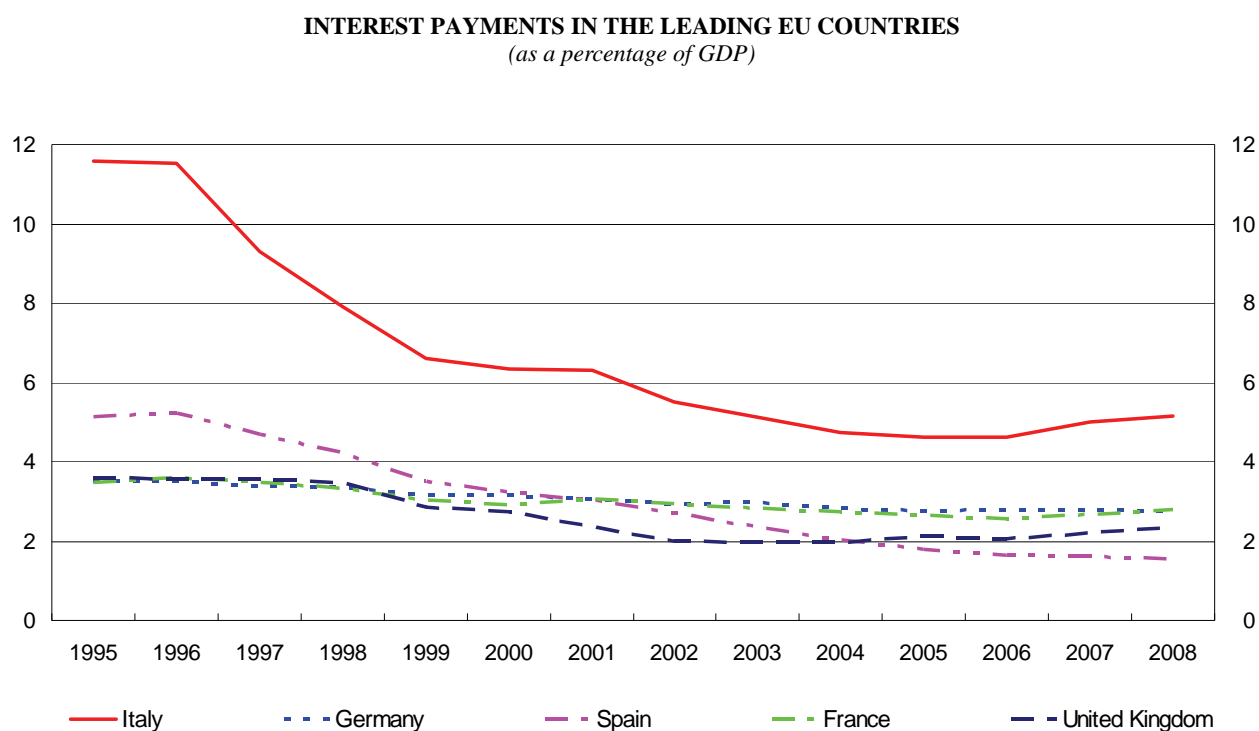
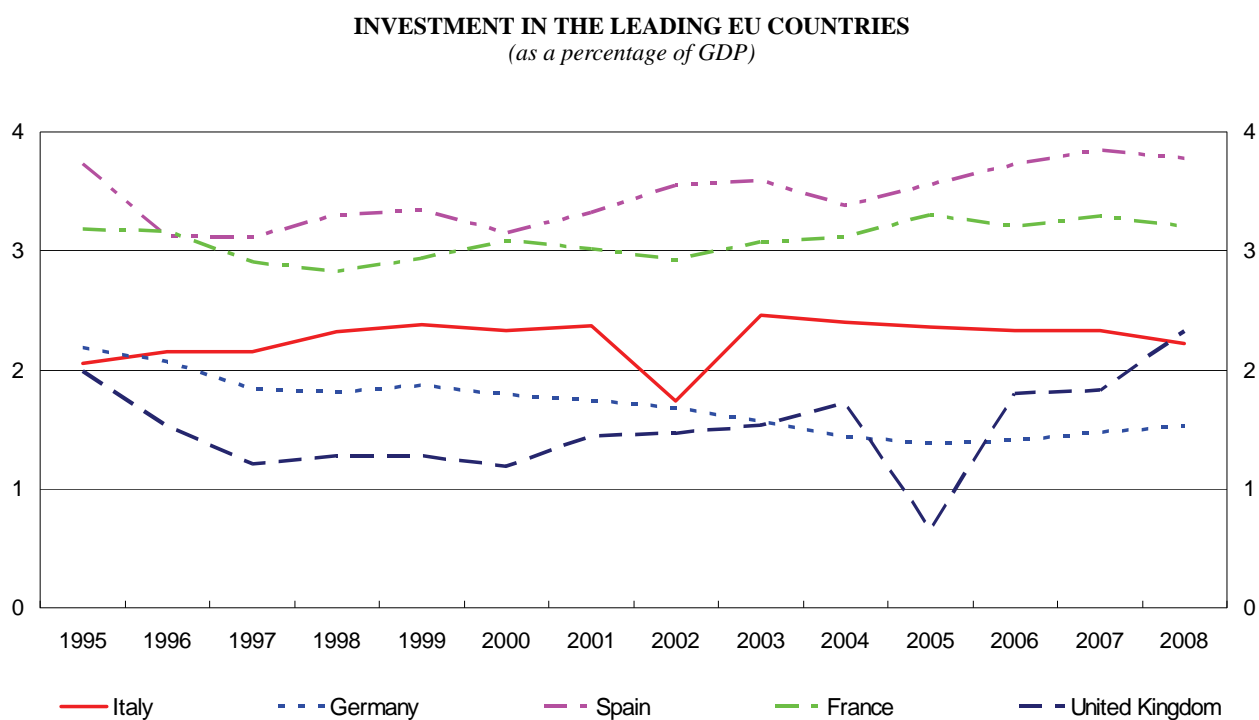


Figure 8



**Table 1**  
**TUEE0100**

**Net borrowing (+)/lending (-)**  
*(as a percentage of GDP)*

	1991	1992	1993	1994	1995	1996	1997	1998	1999	2000	2001	2002	2003	2004	2005	2006	2007	2008
Italy . . . . . S212733Y	11.4	10.4	10.0	9.1	7.4	7.0	2.7	2.8	1.7	0.8	3.1	2.9	3.5	3.5	4.3	3.3	1.5	2.7
Belgium . . . . . S416942Y	6.2	6.9	7.2	4.8	4.5	3.9	2.2	0.9	0.6	0.0	-0.5	0.0	0.1	0.3	2.7	-0.3	0.2	1.2
Germany . . . . . S413846Y	3.2	2.8	3.5	2.6	3.2	3.3	2.6	2.2	1.5	-1.3	2.8	3.7	4.0	3.8	3.3	1.5	0.2	0.1
Ireland . . . . . S986090Y	2.3	2.4	2.3	1.6	2.1	0.1	-1.1	-2.4	-2.7	-4.8	-0.9	0.4	-0.4	-1.4	-1.7	-3.0	-0.2	7.1
Greece . . . . . S012944Y	11.4	12.6	13.6	9.9	9.3	6.8	6.0	3.9	3.1	3.7	4.5	4.8	5.7	7.5	5.1	2.8	3.6	5.0
Spain . . . . . S188930Y	4.3	4.0	6.7	6.1	6.5	4.8	3.4	3.2	1.4	1.0	0.6	0.5	0.2	0.3	-1.0	-2.0	-2.2	3.8
France . . . . . S529905Y	2.0	3.9	5.6	5.6	5.5	4.0	3.3	2.6	1.8	1.5	1.5	3.1	4.1	3.6	2.9	2.3	2.7	3.4
Cyprus . . . . . S964736Y	....	....	....	....	....	....	....	4.1	4.3	2.3	2.2	4.4	6.5	4.1	2.4	1.2	-3.4	-0.9
Luxembourg . . . . . S806706Y	-1.8	-0.7	-1.5	-2.6	-2.4	-1.2	-3.7	-3.4	-3.4	-6.0	-6.1	-2.1	-0.5	1.1	0.0	-1.4	-3.6	-2.6
Malta . . . . . S183993Y	....	....	....	....	4.2	8.0	7.7	9.9	7.7	6.2	6.4	5.5	9.8	4.7	2.9	2.6	2.2	4.7
Netherlands . . . . . S317847Y	2.8	3.8	3.1	3.6	4.3	1.9	1.2	0.9	-0.4	-2.0	0.2	2.1	3.1	1.7	0.3	-0.6	-0.3	-1.0
Austria . . . . . S229288Y	2.9	1.9	4.1	4.8	5.8	4.0	1.8	2.4	2.3	1.7	0.0	0.7	1.4	4.4	1.6	1.6	0.5	0.4
Portugal . . . . . S730692Y	5.8	2.9	5.9	5.9	5.0	4.5	3.5	3.4	2.8	2.9	4.3	2.8	2.9	3.4	6.1	3.9	2.6	2.6
Slovenia . . . . . S360626Y	....	....	....	....	8.4	1.1	2.4	2.4	2.0	3.8	4.1	2.5	2.7	2.2	1.4	1.3	-0.5	0.9
Slovakia . . . . . S544183Y	....	....	....	....	3.4	9.9	6.3	5.3	7.4	12.3	6.5	8.2	2.8	2.4	2.8	3.5	1.9	2.2
Finland . . . . . S366317Y	1.5	5.7	7.8	6.0	6.2	3.5	1.3	-1.6	-1.6	-6.9	-5.0	-4.1	-2.6	-2.4	-2.8	-4.0	-5.2	-4.2
Euro area . . . . . S391488Y	4.3	4.6	5.6	5.1	5.0	4.3	2.7	2.3	1.4	0.1	1.9	2.6	3.1	2.9	2.5	1.3	0.6	1.9
Euro area excluding Italy . . . . . S473870Y	3.2	3.6	4.8	4.2	4.5	3.7	2.7	2.2	1.3	-0.1	1.6	2.5	3.0	2.8	2.1	0.8	0.5	1.7
Bulgaria . . . . . S595598Y	....	....	....	....	3.4	1.8	-5.3	-1.7	-0.2	0.3	-0.6	0.8	0.3	-1.6	-1.9	-3.0	-0.1	-1.5
Czech Republic . . . . . S232571Y	....	....	....	....	13.4	3.3	3.8	5.0	3.7	3.7	5.7	6.8	6.6	3.0	3.6	2.6	0.6	1.5
Denmark . . . . . S615120Y	2.4	2.2	2.8	2.6	2.9	1.9	0.5	-0.1	-1.5	-2.4	-1.5	-0.3	-0.1	-2.0	-5.2	-5.2	-4.5	-3.6
Estonia . . . . . S810645Y	....	....	....	....	-1.1	0.4	-2.2	0.7	3.5	0.2	0.1	-0.3	-1.7	-1.7	-1.5	-2.9	-2.7	3.0
Latvia . . . . . S994631Y	....	....	....	....	1.6	0.4	-1.1	0.0	3.9	2.8	2.1	2.3	1.6	1.0	0.4	0.5	0.4	4.0
Lithuania . . . . . S637678Y	....	....	....	....	1.6	3.3	11.9	3.1	2.8	3.2	3.6	1.9	1.3	1.5	0.5	0.4	1.0	3.2
Hungary . . . . . S763347Y	....	....	....	....	....	4.6	6.1	8.0	5.4	2.9	4.0	9.0	7.2	6.4	7.8	9.2	4.9	3.4
Poland . . . . . S510168Y	....	....	....	....	4.4	4.9	4.6	4.3	2.3	3.0	5.1	5.0	6.3	5.7	4.3	3.9	1.9	3.9
Romania . . . . . S925297Y	....	....	....	....	15.6	3.7	4.5	3.2	4.5	4.7	3.5	2.0	1.5	1.2	1.2	2.2	2.5	5.4
Sweden . . . . . S122237Y	1.1	7.3	11.5	9.6	7.4	3.2	1.5	-1.1	-1.3	-3.7	-1.6	1.2	0.9	-0.8	-2.3	-2.5	-3.8	-2.5
United Kingdom . . . . . S725209Y	2.3	6.1	7.7	6.7	5.9	4.3	2.2	0.1	-0.9	-3.6	-0.5	2.0	3.3	3.4	3.4	2.7	2.7	5.5
EU excluding euro area . . . . . S518588Y	....	....	....	....	6.1	3.9	2.3	0.6	-0.4	-2.5	0.2	2.3	3.2	2.7	2.3	1.8	1.4	3.5
EU . . . . . S019754Y	3.9	4.9	6.0	5.4	5.2	4.2	2.6	1.9	1.0	-0.6	1.4	2.5	3.1	2.9	2.4	1.4	0.8	2.3
EU excluding Italy . . . . . S808385Y	2.9	4.1	5.4	4.8	4.9	3.7	2.6	1.7	0.8	-0.8	1.2	2.4	3.0	2.8	2.2	1.1	0.8	2.2
United States . . . . . S910261Y	4.7	5.6	4.8	3.5	3.0	2.1	0.7	-0.5	-0.9	-1.7	0.3	3.7	4.7	4.2	3.1	2.1	2.7	....
Japan . . . . . S451105Y	....	....	....	....	....	5.1	4.0	11.2	7.4	7.6	6.3	8.0	7.9	6.2	6.7	1.6	2.5	....
Canada . . . . . S763208Y	8.3	9.1	8.7	6.7	5.3	2.8	-0.2	-0.1	-1.6	-2.9	-0.7	0.1	0.1	-0.9	-1.5	-1.3	-1.4	....

**Table 2**  
**TUEE0110**

**Primary net borrowing (+)/lending (-)**  
*(as a percentage of GDP)*

	1991	1992	1993	1994	1995	1996	1997	1998	1999	2000	2001	2002	2003	2004	2005	2006	2007	2008
Italy . . . . . S238801Y	0.0	-1.8	-2.6	-2.3	-4.2	-4.6	-6.6	-5.1	-4.9	-5.5	-3.2	-2.7	-1.6	-1.2	-0.3	-1.3	-3.5	-2.4
Belgium . . . . . S441592Y	-3.8	-3.7	-3.5	-5.1	-4.4	-4.5	-5.5	-6.4	-6.3	-6.6	-6.9	-5.7	-5.2	-4.4	-1.5	-4.2	-3.6	-2.5
Germany . . . . . S440855Y	0.6	-0.4	0.2	-0.7	-0.3	-0.2	-0.7	-1.2	-1.7	-4.5	-0.2	0.7	1.1	1.0	0.5	-1.3	-2.6	-2.6
Ireland . . . . . S021923Y	-5.0	-4.3	-4.0	-4.0	-3.2	-4.4	-5.2	-5.7	-5.0	-6.8	-2.4	-1.0	-1.7	-2.5	-2.7	-3.9	-1.1	6.1
Greece . . . . . S035677Y	2.1	1.1	1.0	-4.0	-2.4	-4.2	-3.7	-4.6	-4.5	-3.6	-2.0	-0.7	0.7	2.6	0.7	-1.3	-0.5	0.7
Spain . . . . . S217678Y	0.6	-0.3	1.7	1.4	1.4	-0.4	-1.3	-1.0	-2.1	-2.2	-2.4	-2.2	-2.1	-1.7	-2.8	-3.7	-3.8	2.3
France . . . . . S560580Y	-0.9	0.7	2.3	2.2	2.0	0.4	-0.2	-0.7	-1.2	-1.4	-1.5	0.2	1.3	0.9	0.3	-0.3	0.0	0.6
Cyprus . . . . . S034201Y	....	....	....	....	....	....	....	1.1	1.3	-1.0	-1.1	1.2	3.1	0.8	-1.1	-2.1	-6.5	-3.8
Luxembourg . . . . . S833059Y	-2.1	-1.1	-1.9	-3.0	-2.8	-1.6	-4.1	-3.8	-3.7	-6.3	-6.4	-2.4	-0.7	0.9	-0.2	-1.5	-3.9	-2.9
Malta . . . . . S204693Y	....	....	....	....	2.2	5.7	5.0	6.7	4.0	2.5	3.1	1.9	6.4	1.1	-0.8	-1.0	-1.1	1.4
Netherlands . . . . . S333693Y	-3.1	-2.3	-2.9	-2.0	-1.3	-3.4	-3.7	-3.8	-4.7	-5.6	-2.9	-0.7	0.6	-0.7	-2.1	-2.8	-2.6	-3.2
Austria . . . . . S255319Y	-1.2	-2.2	-0.1	0.9	1.8	0.1	-1.8	-1.2	-1.1	-1.8	-3.4	-2.5	-1.5	1.5	-1.3	-1.1	-2.2	-2.1
Portugal . . . . . S753271Y	-1.8	-4.1	-0.1	-0.2	-0.8	-0.5	-0.4	0.2	-0.2	-0.1	1.3	0.0	0.2	0.7	3.5	1.2	-0.2	-0.3
Slovenia . . . . . S382743Y	....	....	....	....	6.2	-1.0	0.0	0.2	-0.2	1.4	1.7	0.3	0.7	0.5	-0.1	-0.1	-1.8	-0.2
Slovakia . . . . . S569687Y	....	....	....	....	1.0	7.4	3.9	2.8	4.0	8.2	2.5	4.7	0.3	0.2	1.1	2.0	0.5	0.9
Finland . . . . . S392463Y	-0.4	3.1	3.3	1.0	2.2	-0.6	-2.9	-5.1	-4.6	-9.7	-7.6	-6.2	-4.3	-4.0	-4.3	-5.4	-6.7	-5.6
Euro area . . . . . S552039Y	-0.4	-0.7	0.0	-0.3	-0.5	-1.3	-2.2	-2.3	-2.6	-3.8	-1.9	-0.9	-0.2	-0.2	-0.4	-1.6	-2.3	-1.1
Euro area excluding Italy . . . . . S568861Y	-0.5	-0.5	0.6	0.0	0.3	-0.6	-1.3	-1.7	-2.1	-3.5	-1.7	-0.5	0.1	0.1	-0.5	-1.7	-2.1	-0.8
Bulgaria . . . . . S617276Y	....	....	....	....	-10.7	-19.3	-13.6	-5.9	-3.9	-3.7	-4.0	-1.5	-1.7	-3.4	-3.6	-4.4	-1.1	-2.4
Czech Republic . . . . . S257360Y	....	....	....	....	12.4	2.1	2.7	3.9	2.7	2.9	4.7	5.5	5.5	1.8	2.4	1.5	-0.5	0.3
Denmark . . . . . S643949Y	-4.9	-4.4	-4.5	-4.1	-3.1	-3.7	-4.5	-4.6	-5.5	-5.9	-4.8	-3.3	-2.7	-4.3	-7.0	-6.8	-6.1	-5.0
Estonia . . . . . S840303Y	....	....	....	....	-1.6	0.0	-2.4	0.1	3.2	0.0	-0.1	-0.5	-1.9	-1.9	-1.7	-3.1	-2.9	2.7
Latvia . . . . . S012101Y	....	....	....	....	0.6	-1.0	-2.1	-0.8	3.2	1.8	1.2	1.5	0.9	0.3	-0.2	0.0	-0.1	3.1
Lithuania . . . . . S664938Y	....	....	....	....	1.2	2.5	11.2	1.9	1.4	1.5	2.0	0.6	0.0	0.6	-0.3	-0.3	0.3	2.6
Hungary . . . . . S790043Y	....	....	....	....	....	-5.0	-3.5	0.4	-1.8	-2.4	-0.6	4.9	3.1	2.0	3.7	5.3	0.9	-0.8
Poland . . . . . S535222Y	....	....	....	....	-1.3	0.3	0.1	0.3	-0.6	0.0	2.0	2.1	3.3	2.9	1.5	1.2	-0.4	1.7
Romania . . . . . S958667Y	....	....	....	....	0.0	1.9	0.0	-0.7	-0.6	0.7	0.1	-0.5	-0.1	-0.2	0.1	1.3	1.8	4.7
Sweden . . . . . S154449Y	-3.8	2.2	5.7	3.3	2.0	-2.1	-3.6	-5.8	-5.2	-7.2	-4.4	-1.7	-1.1	-2.4	-3.9	-4.2	-5.6	-4.2
United Kingdom . . . . . S758368Y	-0.4	3.4	4.9	3.5	2.3	0.7	-1.4	-3.4	-3.8	-6.3	-2.9	0.0	1.4	1.5	1.3	0.7	0.5	3.1
EU excluding euro area . . . . . S588601Y	....	....	....	....	1.6	-0.3	-1.7	-3.1	-3.5	-5.4	-2.4	0.1	1.1	0.7	0.2	-0.2	-0.6	1.4
EU . . . . . S052711Y	-0.6	-0.1	0.8	0.2	-0.1	-1.0	-2.1	-2.5	-2.8	-4.2	-2.1	-0.6	0.1	0.1	-0.3	-1.2	-1.9	-0.4
EU excluding Italy . . . . . S833516Y	-0.7	0.2	1.3	0.6	0.6	-0.5	-1.4	-2.1	-2.5	-4.0	-1.9	-0.3	0.4	0.3	-0.3	-1.2	-1.6	-0.2
United States . . . . . S937176Y	-0.3	0.8	0.2	-1.0	-1.6	-2.5	-3.6	-4.7	-4.7	-5.3	-3.0	0.8	2.1	1.7	0.4	-0.7	-0.1	....
Japan . . . . . S480451Y	....	....	....	....	....	1.6	0.6	7.7	3.9	4.3	3.1	5.0	5.1	3.6	4.3	-0.8	0.0	....
Canada . . . . . S790629Y	-1.1	-0.2	-0.5	-2.3	-4.2	-6.3	-8.6	-8.3	-9.3	-10.1	-7.3	-5.7	-5.3	-5.8	-6.1	-5.7	-5.5	....



**Table 3**  
**TUEE0120**

**Current account balance**  
*(as a percentage of GDP)*

	1991	1992	1993	1994	1995	1996	1997	1998	1999	2000	2001	2002	2003	2004	2005	2006	2007	2008
Italy . . . . . S302836Y	7.0	8.1	6.8	5.9	3.8	3.7	0.2	-0.3	-1.7	-1.3	-0.8	-0.3	0.8	0.4	0.6	-1.4	-2.3	-0.8
Belgium . . . . . S495829Y	4.5	5.0	5.1	3.0	1.9	1.5	-0.4	-1.6	-2.1	-2.7	-2.4	-2.0	-0.7	-1.4	-1.8	-2.1	-1.9	-0.8
Germany . . . . . S503822Y	-1.2	-1.4	-0.5	-1.0	0.1	0.5	0.1	-0.5	-1.2	-1.6	-0.1	0.8	1.3	1.3	0.9	-0.7	-2.4	-2.4
Ireland . . . . . S076359Y	1.2	1.2	1.0	-0.6	0.0	-1.8	-2.9	-4.4	-6.9	-7.8	-5.1	-3.5	-3.8	-4.7	-4.9	-6.3	-4.6	1.0
Greece . . . . . S091012Y	6.4	7.0	7.9	7.1	6.2	4.8	2.4	0.3	-0.6	0.1	0.1	0.6	1.5	2.8	2.1	1.2	1.9	2.4
Spain . . . . . S269349Y	-1.2	-0.7	1.7	1.5	1.9	1.3	-0.3	-1.0	-2.6	-3.0	-3.5	-3.9	-3.9	-4.0	-5.1	-6.4	-7.0	-1.3
France . . . . . S634691Y	-1.4	0.4	2.2	2.1	0.9	0.1	0.0	-1.1	-2.0	-2.1	-2.0	-0.3	0.7	0.1	-0.3	-1.3	-1.1	-0.5
Cyprus . . . . . S105877Y	....	....	....	....	....	....	....	0.8	1.2	-1.1	-1.1	0.9	2.6	0.6	-0.2	-2.5	-7.1	-4.4
Luxembourg . . . . . S902570Y	....	....	....	....	-7.4	-7.1	-7.7	-8.6	-8.5	-10.7	-9.8	-8.1	-6.1	-4.5	-5.7	-6.5	-8.1	-7.5
Malta . . . . . S240744Y	....	....	....	....	1.3	5.5	4.1	5.8	3.6	2.6	2.4	1.5	2.4	2.2	1.6	1.3	-0.4	2.1
Netherlands . . . . . S389165Y	-0.3	0.9	0.3	1.0	0.8	-0.9	-1.6	-2.0	-3.4	-4.5	-3.5	-1.7	-0.7	-1.4	-2.8	-3.6	-3.6	-4.5
Austria . . . . . S311892Y	-1.7	-2.6	-0.8	0.0	1.3	-0.5	-1.9	-1.7	-1.3	-1.5	-3.3	-2.5	-1.6	-2.1	-1.6	-1.5	-2.6	-2.6
Portugal . . . . . S817307Y	2.5	-0.8	2.0	2.8	1.5	0.5	-0.7	-1.1	-1.3	-0.6	0.6	0.3	1.3	2.4	3.2	1.6	0.0	0.9
Slovenia . . . . . S430261Y	....	....	....	....	-3.3	-2.9	-1.4	-2.2	-2.1	-0.8	-0.4	-1.4	-1.8	-2.2	-2.5	-2.9	-4.7	-4.0
Slovakia . . . . . S626945Y	....	....	....	....	-4.3	-0.1	-0.9	-0.8	-0.9	0.3	1.4	1.9	-0.2	-0.3	-1.0	0.5	-0.6	-1.1
Finland . . . . . S435865Y	-2.6	2.1	4.9	2.9	0.7	-0.6	-1.8	-4.5	-4.8	-9.4	-7.6	-6.8	-5.3	-5.2	-5.3	-6.2	-7.7	-6.6
Euro area . . . . . S901582Y	0.3	1.0	1.8	1.5	1.3	1.0	-0.2	-0.9	-1.9	-2.2	-1.6	-0.7	0.0	-0.3	-0.7	-2.0	-2.7	-1.5
Euro area excluding Italy . . S794756Y	-0.8	-0.2	1.1	0.7	0.8	0.4	-0.3	-1.1	-2.0	-2.4	-1.8	-0.8	-0.2	-0.4	-1.0	-2.2	-2.8	-1.7
Bulgaria . . . . . S667461Y	....	....	....	....	....	....	....	....	-5.0	-4.0	-5.6	-3.3	-3.7	-6.1	-6.6	-7.5	-7.6	-6.8
Czech Republic . . . . . S315925Y	....	....	....	....	-5.8	-4.7	-4.3	-4.1	-3.1	-2.4	-2.7	-2.0	-1.4	-4.0	-3.5	-3.7	-4.7	-4.0
Denmark . . . . . S705252Y	1.0	0.4	1.0	0.7	1.0	-0.1	-1.4	-1.8	-3.1	-4.0	-2.9	-1.9	-1.6	-3.5	-6.7	-6.7	-6.0	-5.7
Estonia . . . . . S889781Y	....	....	....	....	-5.9	-4.2	-6.7	-4.7	-0.9	-3.6	-4.3	-5.7	-6.0	-5.1	-5.2	-7.6	-7.9	-3.4
Latvia . . . . . S056777Y	....	....	....	....	-0.9	-2.1	-1.4	-2.2	0.3	-0.2	-1.2	-1.0	-1.1	-2.7	-3.5	-5.5	-5.7	-0.5
Lithuania . . . . . S714466Y	....	....	....	....	-3.2	-1.7	-3.4	-0.7	-0.6	-1.5	-0.7	-1.6	-1.8	-2.0	-2.4	-3.0	-3.6	-1.1
Hungary . . . . . S859296Y	....	....	....	....	....	0.4	0.9	0.5	0.7	-2.6	-2.0	0.5	2.1	2.1	3.2	4.0	0.4	0.2
Poland . . . . . S615623Y	....	....	....	....	0.5	0.0	0.0	-0.6	-1.6	0.1	0.9	0.8	1.7	1.7	0.3	-0.6	-2.6	-1.4
Romania . . . . . S018706Y	....	....	....	....	11.5	-1.0	1.2	0.4	1.3	0.3	-0.5	-2.4	-3.3	-3.4	-3.4	-4.3	-4.2	-1.3
Sweden . . . . . S236464Y	-1.4	3.2	6.6	6.4	3.2	-0.1	-1.9	-3.3	-4.5	-6.4	-4.5	-1.9	-2.0	-3.6	-5.4	-5.7	-7.0	-5.9
United Kingdom . . . . . S816979Y	-0.5	3.2	4.9	4.2	3.0	2.0	0.5	-1.5	-2.5	-2.7	-2.4	0.1	1.2	1.2	1.1	0.2	0.3	1.8
EU excluding euro area . . S875774Y	....	....	....	....	2.5	1.0	-0.1	-1.7	-2.6	-2.9	-2.3	-0.3	0.4	0.0	-0.5	-1.3	-1.6	-0.5
EU . . . . . S111851Y	0.1	1.4	2.4	2.0	1.5	1.0	-0.2	-1.1	-2.1	-2.4	-1.8	-0.6	0.1	-0.2	-0.6	-1.8	-2.4	-1.2
EU excluding Italy . . . . . S899034Y	-0.8	0.5	1.9	1.5	1.2	0.6	-0.2	-1.2	-2.2	-2.6	-1.9	-0.7	0.0	-0.3	-0.8	-1.9	-2.5	-1.3
United States . . . . . S982684Y	2.3	3.4	2.6	1.4	1.0	0.0	-1.3	-2.5	-3.1	-3.9	-2.1	1.2	2.2	1.8	0.7	-0.2	0.1	....
Japan . . . . . S527186Y	....	....	....	....	....	-2.8	-2.8	-1.3	0.2	0.2	-0.1	2.1	2.4	2.6	1.4	-0.1	-0.2	....
Canada . . . . . S841805Y	5.0	6.0	5.9	3.9	2.6	0.4	-2.2	-2.1	-3.6	-5.1	-3.0	-2.3	-2.3	-3.5	-4.4	-4.3	-4.5	....

**Table 4**  
**TUEE0130**

**Capital account balance**  
*(as a percentage of GDP)*

	1991	1992	1993	1994	1995	1996	1997	1998	1999	2000	2001	2002	2003	2004	2005	2006	2007	2008
Italy . . . . . S310569Y	4.4	2.3	3.3	3.2	3.7	3.3	2.4	3.1	3.4	2.2	3.9	3.2	2.7	3.1	3.7	4.7	3.8	3.5
Belgium . . . . . S501937Y	1.8	1.9	2.1	1.8	2.5	2.4	2.6	2.5	2.6	2.7	2.0	2.0	0.8	1.7	4.5	1.8	2.1	2.0
Germany . . . . . S510830Y	4.5	4.2	4.0	3.5	3.1	2.8	2.5	2.7	2.7	0.3	2.9	2.8	2.7	2.5	2.4	2.3	2.6	2.5
Ireland . . . . . S085742Y	1.1	1.2	1.3	2.2	2.1	1.9	1.8	2.0	4.2	3.1	4.2	3.9	3.4	3.3	3.2	3.3	4.4	6.1
Greece . . . . . S099465Y	4.9	5.6	5.6	2.8	3.0	2.0	3.6	3.6	3.7	3.6	4.3	4.1	4.1	4.7	3.0	1.6	1.7	2.6
Spain . . . . . S275886Y	5.5	4.7	5.1	4.6	4.6	3.5	3.7	4.3	4.1	4.0	4.2	4.4	4.1	4.4	4.1	4.4	4.8	5.1
France . . . . . S641997Y	3.5	3.4	3.4	3.6	4.6	3.9	3.3	3.7	3.8	3.6	3.6	3.4	3.4	3.5	3.2	3.6	3.8	3.9
Cyprus . . . . . S117378Y	....	....	....	....	....	....	....	3.3	3.1	3.4	3.3	3.5	3.9	3.4	2.6	3.7	3.7	3.4
Luxembourg . . . . . S908998Y	....	....	....	....	5.0	5.9	4.0	5.3	5.1	4.7	3.7	6.0	5.7	5.6	5.7	5.1	4.5	4.9
Malta . . . . . S245890Y	....	....	....	....	2.9	2.4	3.6	4.1	4.1	3.5	4.0	4.0	7.4	2.5	1.3	1.2	2.6	2.6
Netherlands . . . . . S399282Y	3.1	2.9	2.8	2.7	3.5	2.8	2.8	2.8	3.0	2.5	3.7	3.8	3.8	3.2	3.1	3.0	3.2	3.5
Austria . . . . . S322146Y	4.7	4.5	4.9	4.8	4.5	4.5	3.7	4.1	3.6	3.1	3.3	3.2	3.0	6.5	3.1	3.1	3.1	2.9
Portugal . . . . . S826093Y	3.3	3.7	3.9	3.1	3.5	4.0	4.2	4.5	4.1	3.6	3.7	2.5	1.6	1.0	2.8	2.3	2.6	1.8
Slovenia . . . . . S437665Y	....	....	....	....	11.6	4.1	3.8	4.6	4.0	4.6	4.6	3.9	4.4	4.4	3.9	4.2	4.2	4.9
Slovakia . . . . . S633950Y	....	....	....	....	7.7	10.1	7.2	6.1	8.3	12.0	5.1	6.3	3.0	2.7	3.8	2.9	2.5	3.3
Finland . . . . . S442951Y	4.1	3.7	2.9	3.2	5.4	4.1	3.1	2.9	3.2	2.5	2.6	2.7	2.7	2.8	2.5	2.2	2.4	2.4
Euro area . . . . . S922729Y	4.1	3.6	3.8	3.5	3.8	3.3	2.9	3.2	3.3	2.3	3.5	3.3	3.1	3.2	3.2	3.3	3.4	3.4
Euro area excluding Italy . . . . . S606672Y	4.0	3.8	3.8	3.5	3.8	3.3	3.0	3.2	3.3	2.3	3.4	3.3	3.1	3.2	3.1	3.0	3.3	3.4
Bulgaria . . . . . S675961Y	....	....	....	....	....	....	....	....	4.9	4.3	5.0	4.1	4.1	4.5	4.7	4.5	7.5	5.3
Czech Republic . . . . . S321758Y	....	....	....	....	19.2	8.0	8.1	9.1	6.8	6.1	8.4	8.8	8.0	7.0	7.1	6.3	5.3	5.5
Denmark . . . . . S716392Y	1.4	1.9	1.8	1.9	1.9	2.0	1.9	1.8	1.6	1.6	1.5	1.6	1.5	1.5	1.5	1.5	1.5	2.2
Estonia . . . . . S895450Y	....	....	....	....	4.8	4.6	4.6	5.4	4.4	3.8	4.4	5.4	4.3	3.5	3.7	4.7	5.2	6.4
Latvia . . . . . S065445Y	....	....	....	....	2.5	2.6	0.3	2.2	3.6	3.0	3.3	3.3	2.7	3.7	3.9	6.0	6.1	4.5
Lithuania . . . . . S721074Y	....	....	....	....	4.8	5.1	15.2	3.7	3.4	4.7	4.3	3.5	3.1	3.5	2.9	3.5	4.6	4.3
Hungary . . . . . S868450Y	....	....	....	....	....	4.2	5.2	7.5	4.6	5.5	6.1	8.5	5.1	4.3	4.7	5.2	4.5	3.2
Poland . . . . . S625092Y	....	....	....	....	4.0	4.9	4.6	4.9	3.9	3.0	4.3	4.2	4.6	4.0	4.0	4.5	4.5	5.3
Romania . . . . . S025924Y	....	....	....	....	4.2	4.7	3.3	2.8	3.1	4.3	4.0	4.4	4.8	4.6	4.5	6.5	6.8	6.7
Sweden . . . . . S244717Y	2.4	4.1	4.8	3.2	4.2	3.3	3.4	2.2	3.2	2.7	2.8	3.1	3.0	2.8	3.1	3.1	3.1	3.3
United Kingdom . . . . . S825520Y	2.8	2.8	2.8	2.5	2.9	2.2	1.6	1.6	1.6	-0.9	1.9	1.9	2.2	2.2	2.3	2.5	2.4	3.6
EU excluding euro area . . . . . S615058Y	....	....	....	....	3.6	2.9	2.4	2.3	2.2	0.5	2.5	2.6	2.7	2.7	2.8	3.1	3.0	3.9
EU . . . . . S116032Y	3.8	3.5	3.7	3.4	3.7	3.2	2.8	3.0	3.1	1.8	3.2	3.1	3.0	3.1	3.1	3.2	3.3	3.5
EU excluding Italy . . . . . S908384Y	3.7	3.6	3.6	3.3	3.7	3.2	2.9	3.0	3.0	1.8	3.1	3.1	3.0	3.1	3.0	3.0	3.2	3.5
United States . . . . . S992338Y	2.4	2.2	2.1	2.1	2.0	2.1	2.0	2.0	2.2	2.2	2.3	2.5	2.6	2.5	2.5	2.3	2.6	....
Japan . . . . . S548060Y	....	....	....	....	....	7.9	6.9	12.5	7.2	7.5	6.4	5.9	5.5	3.5	5.3	1.7	2.8	....
Canada . . . . . S850720Y	3.4	3.1	2.8	2.8	2.7	2.4	2.0	2.0	2.0	2.2	2.3	2.4	2.4	2.6	2.8	3.0	3.1	....

**Table 5**  
**TUEE0140**

**Gross public debt**

(as a percentage of GDP)

	1991	1992	1993	1994	1995	1996	1997	1998	1999	2000	2001	2002	2003	2004	2005	2006	2007	2008
Italy ..... S164287Y	98.6	105.5	115.7	121.8	121.5	120.9	118.1	114.9	113.7	109.2	108.8	105.7	104.4	103.8	105.8	106.5	103.5	105.7
Belgium ..... S381161Y	127.1	128.8	134.2	131.5	129.8	127.0	122.3	117.1	113.6	107.8	106.5	103.4	98.6	94.3	92.2	87.9	84.0	89.6
Germany ..... S383684Y	40.3	43.0	46.9	49.3	55.6	58.4	59.7	60.3	60.9	59.7	58.8	60.3	63.8	65.6	67.8	67.6	65.1	65.9
Ireland ..... S950832Y	92.8	89.7	93.6	87.7	81.1	72.5	63.7	53.1	48.1	37.7	35.5	32.2	31.1	29.4	27.5	24.9	25.0	43.2
Greece ..... S964495Y	82.2	87.8	110.1	107.9	99.2	101.6	104.1	102.6	102.5	101.8	102.9	101.5	97.8	98.6	98.8	95.9	94.8	97.6
Spain ..... S152268Y	44.2	46.6	58.1	60.5	62.7	66.8	65.3	63.2	61.5	59.2	55.5	52.5	48.7	46.2	43.0	39.6	36.2	39.5
France ..... S495862Y	35.3	38.9	44.3	47.6	55.5	58.0	59.3	59.4	58.8	57.3	56.9	58.8	62.9	64.9	66.4	63.7	63.8	68.0
Cyprus ..... S927219Y	....	....	....	....	....	50.2	54.4	58.4	58.7	58.8	60.7	64.6	68.9	70.2	69.1	64.6	59.4	49.1
Luxembourg ..... S767900Y	3.8	4.7	5.7	5.4	7.4	7.8	7.7	7.4	6.7	6.4	6.5	6.5	6.2	6.3	6.1	6.7	6.9	14.7
Malta ..... S155247Y	....	....	....	....	....	39.0	47.5	52.6	57.0	55.9	62.1	60.1	69.3	72.2	69.8	63.7	62.1	64.1
Netherlands ..... S289714Y	75.6	76.7	78.0	74.7	76.1	74.1	68.2	65.7	61.1	53.8	50.7	50.5	52.0	52.4	51.8	47.4	45.6	58.2
Austria ..... S182377Y	56.1	55.8	60.4	63.0	68.3	68.3	64.4	64.8	67.2	66.4	67.0	66.4	65.4	64.8	63.7	62.0	59.4	62.5
Portugal ..... S694495Y	67.0	60.7	61.3	62.1	61.0	59.9	56.1	52.1	51.4	50.4	52.9	55.5	56.9	58.3	63.6	64.7	63.5	66.4
Slovenia ..... S331933Y	....	....	....	....	....	20.4	20.8	21.5	23.9	26.8	27.4	28.1	27.5	27.2	27.0	26.7	23.4	22.8
Slovakia ..... S511562Y	....	....	....	....	22.2	31.1	33.8	34.5	47.8	50.3	48.9	43.4	42.4	41.4	34.2	30.4	29.4	27.6
Finland ..... S329985Y	22.6	40.6	56.7	58.2	56.7	56.9	53.8	48.2	45.5	43.8	42.3	41.3	44.4	44.2	41.4	39.2	35.1	33.4
Euro area ..... S632925Y	56.2	59.8	66.2	68.8	72.7	74.3	73.7	72.5	71.7	69.2	68.1	67.9	69.0	69.4	70.0	68.2	66.0	69.3
Euro area excluding Italy. S642131Y	47.3	50.2	55.7	57.7	62.5	64.3	64.2	63.4	62.8	60.7	59.5	59.8	61.5	62.0	62.4	60.2	58.2	61.9
Bulgaria ..... S566576Y	....	....	....	....	....	....	105.1	79.6	79.3	74.3	67.3	53.6	45.9	37.9	29.2	22.7	18.2	14.1
Czech Republic ..... S191451Y	....	....	....	....	14.6	12.5	13.1	15.0	16.4	18.5	25.1	28.5	30.1	30.4	29.8	29.6	28.9	29.8
Denmark ..... S576514Y	62.3	66.3	78.0	73.5	72.5	69.2	65.2	60.8	57.4	51.7	47.4	46.8	45.8	44.5	37.1	31.3	26.8	33.3
Estonia ..... S780619Y	....	....	....	....	9.0	7.4	6.2	5.5	6.0	5.2	4.8	5.6	5.5	5.0	4.5	4.3	3.5	4.8
Latvia ..... S960776Y	....	....	....	....	....	13.9	11.1	9.6	12.5	12.3	14.0	13.5	14.6	14.9	12.4	10.7	9.0	19.5
Lithuania ..... S608676Y	....	....	....	....	11.9	14.3	15.6	16.6	22.8	23.7	23.1	22.3	21.1	19.4	18.4	18.0	17.0	15.6
Hungary ..... S713412Y	....	....	....	....	85.1	71.7	62.3	60.4	59.5	54.2	52.1	55.8	58.1	59.4	61.7	65.6	65.8	73.0
Poland ..... S468039Y	....	....	....	....	....	43.4	42.9	38.9	39.6	36.8	37.6	42.2	47.1	45.7	47.1	47.7	44.9	47.1
Romania ..... S884859Y	....	....	....	....	....	....	16.5	18.8	22.1	24.6	25.7	24.9	21.5	18.7	15.8	12.4	12.7	13.6
Sweden ..... S080151Y	50.1	63.2	71.2	73.8	72.1	72.1	69.2	69.1	64.8	53.6	54.4	52.6	52.3	51.2	51.0	45.9	40.5	38.0
United Kingdom ..... S700901Y	34.9	40.8	47.5	49.4	50.8	51.0	49.8	46.7	43.7	41.0	37.7	37.5	38.7	40.6	42.3	43.4	44.2	52.0
EU excluding euro area . S670973Y	....	....	....	....	55.8	54.0	51.5	48.4	46.0	42.2	39.8	39.8	41.0	41.7	42.1	41.6	40.8	45.5
EU ..... S978342Y	52.9	57.3	64.0	66.4	69.4	70.0	68.4	66.6	65.3	62.1	60.7	60.5	61.9	62.3	62.6	61.1	59.1	63.2
EU excluding Italy ..... S771253Y	45.6	49.5	55.4	57.2	61.0	61.8	60.6	59.2	58.0	55.1	53.5	53.8	55.5	56.0	56.2	54.5	52.8	57.0
United States ..... S899643Y	67.7	70.2	71.9	71.1	70.7	70.0	67.6	64.5	61.0	55.2	55.2	57.6	61.0	61.9	62.3	61.7	62.9	73.3
Japan ..... S979763Y	64.1	67.9	73.9	79.4	86.7	94.0	100.5	113.2	127.0	135.4	143.7	152.3	158.0	165.5	175.3	171.9	170.6	173.0
Canada ..... S267719Y	82.3	90.2	96.3	98.0	101.6	101.7	96.3	95.2	91.4	82.1	82.7	80.5	76.6	72.6	71.1	68.0	64.0	63.0

**Table 6**  
**TUEE0150**

**Total revenue (Regulation EC 1500/2000)**

(as a percentage of GDP)

	1991	1992	1993	1994	1995	1996	1997	1998	1999	2000	2001	2002	2003	2004	2005	2006	2007	2008
Italy ..... S347697Y	42.6	45.0	46.3	44.4	45.1	45.5	47.6	46.2	46.4	45.3	44.9	44.4	44.8	44.2	43.8	45.4	46.4	46.0
Traditional Italy account . S334938Y	43.0	45.2	46.6	44.7	45.3	45.7	47.7	46.2	46.4	45.4	45.0	44.5	45.1	44.5	44.2	45.8	46.9	46.6
Belgium ..... S510269Y	....	....	....	....	47.6	48.5	49.0	49.5	49.6	49.1	49.6	49.8	51.1	49.1	49.4	48.7	48.1	48.6
Germany ..... S518793Y	....	....	....	....	45.1	46.0	45.7	45.9	46.6	46.4	44.7	44.4	44.5	43.3	43.5	43.8	44.0	43.8
Ireland ..... S101502Y	....	....	....	....	39.1	39.0	38.1	36.8	36.7	36.3	34.3	33.3	33.8	35.1	35.4	37.0	35.9	33.8
Greece ..... S105280Y	....	....	....	....	37.3	38.1	39.7	41.2	42.1	43.0	40.9	40.3	39.3	38.0	38.1	39.1	40.1	39.9
Spain ..... S282326Y	....	....	....	....	38.0	38.4	38.2	37.8	38.4	38.1	38.0	38.4	38.2	38.5	39.4	40.5	41.0	36.6
France ..... S656471Y	....	....	....	....	49.0	50.4	50.8	50.1	50.8	50.2	50.0	49.5	49.2	49.6	50.4	50.4	49.6	49.3
Cyprus ..... S127832Y	....	....	....	....	....	....	....	32.6	32.5	34.7	35.9	35.8	38.5	38.7	41.2	42.2	46.4	44.9
Luxembourg ..... S916135Y	....	....	....	....	42.1	42.3	44.3	44.4	42.6	43.6	44.2	43.6	42.2	41.4	41.6	39.9	40.8	43.3
Malta ..... S250523Y	....	....	....	....	35.5	34.6	35.3	33.1	35.3	34.8	36.6	37.7	37.9	40.7	41.8	41.2	40.4	40.6
Netherlands ..... S408394Y	....	....	....	....	47.2	47.5	46.3	45.8	46.4	46.1	45.1	44.1	43.9	44.3	44.5	46.2	45.6	46.4
Austria ..... S333625Y	....	....	....	....	50.5	51.8	51.7	51.5	51.3	50.3	51.4	50.1	49.9	49.5	48.2	47.7	48.0	48.2
Portugal ..... S834253Y	....	....	....	....	38.4	39.7	39.7	39.4	40.5	40.2	40.1	41.4	42.5	43.1	41.6	42.3	43.1	43.2
Slovenia ..... S447376Y	....	....	....	....	44.3	43.3	42.5	43.3	43.4	43.0	43.6	43.9	43.7	43.6	43.8	43.3	42.9	42.7
Slovakia ..... S639431Y	....	....	....	....	45.2	43.8	42.6	40.4	40.4	38.6	38.0	36.8	37.4	35.3	35.4	33.5	32.5	32.7
Finland ..... S449138Y	....	....	....	....	55.3	56.4	55.0	54.2	53.1	55.2	52.7	52.9	52.5	52.3	52.9	52.6	52.5	52.5
Euro area ..... S694022Y	....	....	....	....	45.6	46.4	46.7	46.2	46.7	46.2	45.4	45.0	45.0	44.6	44.8	45.3	45.4	44.7
Euro area excluding Italy. S718663Y	....	....	....	....	45.7	46.6	46.5	46.2	46.7	46.4	45.5	45.1	45.0	44.6	45.0	45.3	45.2	44.5
Bulgaria ..... S686662Y	....	....	....	....	....	....	....	....	42.0	42.2	40.9	39.5	40.0	41.3	41.2	39.5	41.5	39.0
Czech Republic ..... S326105Y	....	....	....	....	41.0	39.3	39.4	38.2	38.6	38.1	38.7	39.5	40.7	42.2	41.4	41.2	42.0	40.9
Denmark ..... S724813Y	....	....	....	....	56.4	56.9	56.1	56.2	56.8	55.8	55.3	54.8	55.0	56.4	57.8	56.6	55.4	55.4
Estonia ..... S908676Y	....	....	....	....	42.5	39.2	39.7	38.7	36.8	36.2	35.0	36.1	36.6	35.7	35.5	37.1	38.2	37.9
Latvia ..... S072093Y	....	....	....	....	37.0	36.5	37.5	40.2	37.9	34.6	32.5	33.4	33.2	34.7	35.2	37.7	35.5	35.5
Lithuania ..... S727933Y	....	....	....	....	34.1	34.1	38.4	37.4	37.3	35.9	33.2	32.9	31.9	31.8	32.8	33.1	33.9	34.0
Hungary ..... S878970Y	....	....	....	....	....	46.7	44.8	43.5	43.2	43.6	43.2	42.4	42.0	42.6	42.3	42.7	44.8	46.5
Poland ..... S634064Y	....	....	....	....	43.3	46.1	41.8	40.1	40.4	38.1	38.6	39.2	38.4	36.9	39.1	39.9	40.2	39.2
Romania ..... S031462Y	....	....	....	....	33.8	30.9	30.5	32.0	35.2	33.8	32.5	33.0	32.0	32.3	32.3	33.1	34.0	33.1
Sweden ..... S260619Y	....	....	....	....	57.8	59.7	59.3	60.1	59.8	59.3	57.2	55.3	55.8	56.1	57.2	56.5	56.3	55.7
United Kingdom ..... S832983Y	....	....	....	....	38.0	38.0	38.3	39.4	39.8	40.3	40.6	39.0	38.7	39.5	40.7	41.5	41.3	42.2
EU excluding euro area . S732643Y	....	....	....	....	42.9	43.5	42.6	43.0	43.3	43.2	43.0	41.7	41.7	42.2	43.2	43.6	43.4	43.7
EU ..... S122513Y	....	....	....	....	45.1	45.8	45.7	45.4	45.8	45.4	44.8	44.1	44.1	44.0	44.4	44.9	44.9	44.5
EU excluding Italy ..... S916551Y	....	....	....	....	45.1	45.8	45.4	45.3	45.8	45.4	44.7	44.1	44.0	43.9	44.5	44.8	44.6	44.2
United States ..... S000863Y	....	....	....	....	....	....	....	....	....	....	....	....	....	....	....	....	....	....
Japan ..... S559225Y	....	....	....	....	....	....	....	....	....	....	....	....	....	....	....	....	....	....
Canada ..... S861325Y	....	....	....	....	....	....	....	....	....	....	....	....	....	....	....	....	....	....

**Table 7**  
**TUEE0160**

**Current revenue (Regulation EC 1500/2000)**

(as a percentage of GDP)

	1991	1992	1993	1994	1995	1996	1997	1998	1999	2000	2001	2002	2003	2004	2005	2006	2007	2008
Italy . . . . . S187164Y	42.3	42.8	45.4	44.0	44.3	45.1	46.6	45.5	45.9	44.9	44.6	43.9	43.1	43.3	43.3	45.1	46.1	45.8
Traditional Italy account . . S352890Y	42.6	43.1	45.7	44.3	44.5	45.2	46.7	45.5	45.9	44.9	44.8	44.1	43.4	43.6	43.8	45.6	46.6	46.3
Belgium . . . . . S396251Y	....	....	....	....	47.2	48.0	48.4	49.0	49.0	48.6	49.1	49.3	48.7	48.3	48.5	48.0	47.4	47.9
Germany . . . . . S397653Y	....	....	....	....	44.6	45.5	45.3	45.4	46.2	46.0	44.4	44.0	44.0	42.9	43.1	43.4	43.5	43.4
Ireland . . . . . S965736Y	....	....	....	....	37.3	37.4	36.3	35.2	35.1	34.8	33.1	32.1	32.6	34.0	34.3	35.7	34.8	32.7
Greece . . . . . S984999Y	....	....	....	....	35.9	36.1	37.7	39.0	39.9	40.1	39.4	39.0	37.5	36.3	36.5	36.7	37.7	37.9
Spain . . . . . S170453Y	....	....	....	....	36.6	37.0	37.3	37.2	37.7	37.6	37.4	37.7	37.5	37.7	38.6	39.8	40.6	36.5
France . . . . . S512587Y	....	....	....	....	48.8	50.2	50.0	49.9	50.5	49.8	49.8	49.1	48.6	49.0	49.4	50.0	49.3	49.0
Cyprus . . . . . S944076Y	....	....	....	....	....	....	....	32.5	32.4	34.6	35.9	35.8	38.4	37.9	40.2	42.2	46.3	44.8
Luxembourg . . . . . S786325Y	....	....	....	....	41.9	42.2	44.1	44.2	42.4	43.4	44.1	43.4	42.0	41.1	41.3	39.7	40.7	43.0
Malta . . . . . S167973Y	....	....	....	....	34.8	32.6	34.2	32.2	34.2	33.7	36.3	37.2	37.4	38.8	38.2	37.9	39.1	39.8
Netherlands . . . . . S306512Y	....	....	....	....	46.9	47.0	46.0	45.4	46.0	45.7	44.7	43.7	43.6	44.0	44.1	45.8	45.3	46.1
Austria . . . . . S206857Y	....	....	....	....	50.2	51.7	51.5	51.4	51.0	50.1	51.3	49.9	49.7	49.3	48.1	47.5	47.9	48.1
Portugal . . . . . S712292Y	....	....	....	....	36.6	37.7	37.4	37.9	38.8	38.8	38.4	39.6	39.8	39.6	40.1	41.2	42.2	42.3
Slovenia . . . . . S343032Y	....	....	....	....	44.1	43.2	42.3	43.0	43.2	42.8	43.4	43.7	43.6	43.5	43.7	43.1	42.5	42.4
Slovakia . . . . . S531046Y	....	....	....	....	45.2	43.6	42.6	40.4	40.2	38.5	37.9	36.7	37.3	35.1	35.4	33.4	32.3	32.7
Finland . . . . . S346559Y	....	....	....	....	55.1	56.1	54.6	53.8	52.8	54.8	52.4	52.5	52.1	51.9	52.5	52.2	52.2	52.1
Euro area . . . . . S757500Y	....	....	....	....	45.0	45.9	46.0	45.7	46.2	45.7	45.0	44.5	44.1	43.9	44.1	44.8	45.0	44.4
Euro area excluding Italy . S777444Y	....	....	....	....	45.2	46.1	45.8	45.8	46.2	45.9	45.1	44.6	44.4	44.0	44.3	44.8	44.7	44.1
Bulgaria . . . . . S581912Y	....	....	....	....	....	....	....	....	42.6	42.5	42.0	40.0	40.6	42.0	41.6	39.7	40.9	38.5
Czech Republic . . . . . S213183Y	....	....	....	....	40.5	39.1	39.3	38.0	38.5	37.9	38.5	39.4	40.5	41.8	41.1	40.6	41.1	40.2
Denmark . . . . . S591689Y	....	....	....	....	55.8	56.5	55.6	55.8	56.2	55.3	54.8	54.2	54.4	55.6	57.2	56.0	54.8	54.8
Estonia . . . . . S792886Y	....	....	....	....	42.0	38.9	39.4	38.3	36.5	35.8	34.9	35.8	36.2	35.4	35.2	36.3	37.4	37.4
Latvia . . . . . S978257Y	....	....	....	....	36.8	35.8	35.7	38.7	37.2	33.9	32.4	33.1	33.1	34.3	34.0	36.6	34.8	34.3
Lithuania . . . . . S625045Y	....	....	....	....	34.1	34.1	38.4	37.4	37.2	35.8	33.1	32.4	31.5	31.3	32.0	32.1	32.4	32.9
Hungary . . . . . S736818Y	....	....	....	....	....	46.2	44.4	43.1	42.8	43.2	42.7	42.0	41.6	42.1	41.6	41.6	43.9	45.4
Poland . . . . . S489353Y	....	....	....	....	43.2	42.6	41.8	40.1	40.4	38.1	38.9	39.5	38.6	37.1	38.8	39.6	39.9	39.1
Romania . . . . . S903388Y	....	....	....	....	33.8	30.9	30.5	32.0	35.1	33.7	32.4	32.9	31.9	31.9	32.0	32.9	33.9	33.0
Sweden . . . . . S100540Y	....	....	....	....	57.6	59.6	59.1	59.9	59.6	59.2	57.0	55.1	55.6	56.0	57.1	56.4	56.3	55.6
United Kingdom . . . . . S713235Y	....	....	....	....	37.7	37.7	38.1	39.1	39.6	40.1	40.3	38.7	38.4	39.2	40.3	41.1	40.9	40.6
EU excluding euro area . . S800323Y	....	....	....	....	42.7	43.0	42.3	42.8	43.1	43.0	42.7	41.4	41.4	41.9	42.8	43.2	43.0	42.6
EU . . . . . S999966Y	....	....	....	....	44.6	45.3	45.1	45.0	45.4	45.0	44.4	43.7	43.4	43.4	43.8	44.4	44.4	43.9
EU excluding Italy . . . . . S791068Y	....	....	....	....	44.6	45.3	44.9	44.9	45.3	45.0	44.4	43.7	43.5	43.4	43.8	44.3	44.2	43.6
United States . . . . . S893334Y	30.0	29.0	29.1	29.4	29.8	30.3	30.6	31.0	31.1	31.8	30.8	28.3	27.7	27.9	29.3	30.1	30.3	....
Japan . . . . . S424961Y	....	....	....	....	....	29.9	29.9	29.5	29.4	29.6	30.5	29.1	28.8	28.1	29.4	30.6	31.1	....
Canada . . . . . S747203Y	40.6	40.8	40.1	39.7	39.7	40.3	40.7	40.7	40.3	40.4	39.0	37.6	37.6	37.5	37.6	37.5	37.3	....

**Table 8**  
**TUEE0170**

**Tax revenue and social security contributions**  
*(as a percentage of GDP)*

	1991	1992	1993	1994	1995	1996	1997	1998	1999	2000	2001	2002	2003	2004	2005	2006	2007	2008
Italy . . . . . S276937Y	39.4	41.9	42.9	40.8	41.2	41.6	43.7	42.3	42.4	41.6	41.3	40.8	41.4	40.6	40.4	42.0	43.1	42.8
Belgium . . . . . S473018Y	46.1	46.4	47.0	47.8	44.9	45.6	46.1	46.7	46.8	46.5	46.6	46.9	46.4	46.6	46.4	46.0	45.4	45.9
Germany . . . . . S476444Y	41.0	41.9	42.4	42.9	40.4	41.5	41.5	41.8	42.6	42.7	40.9	40.7	40.7	39.9	39.8	40.2	40.5	40.4
Ireland . . . . . S048567Y	34.3	34.6	34.7	35.8	33.7	33.9	33.2	32.3	32.4	32.2	30.5	29.5	30.1	31.4	31.8	33.2	32.3	29.8
Greece . . . . . S066905Y	....	....	....	....	30.9	31.3	32.6	34.4	35.5	36.0	34.7	35.3	34.0	33.1	33.3	33.2	34.1	34.3
Spain . . . . . S248527Y	35.3	37.0	36.1	35.7	32.9	33.3	33.8	34.0	34.5	34.8	34.4	35.0	35.0	35.4	36.5	37.5	38.1	34.0
France . . . . . S596440Y	44.9	44.6	44.9	45.3	44.0	45.3	45.5	45.5	46.4	45.6	45.3	44.7	44.5	44.9	45.3	45.6	44.9	44.5
Cyprus . . . . . S077842Y	....	....	....	....	....	....	....	27.7	28.0	30.0	30.9	31.2	33.0	33.2	35.3	36.2	41.4	40.1
Luxembourg . . . . . S867583Y	....	....	....	....	37.4	37.9	39.7	39.8	38.7	39.4	40.2	39.8	38.8	37.9	38.3	36.5	37.2	39.0
Malta . . . . . S222615Y	....	....	....	....	27.9	26.8	28.8	26.9	28.7	29.3	31.9	33.0	32.8	34.0	34.9	34.7	35.7	35.7
Netherlands . . . . . S360001Y	45.6	45.6	46.8	44.7	40.3	40.5	39.8	39.7	40.6	40.1	38.7	38.2	37.9	38.0	38.1	39.4	39.2	39.3
Austria . . . . . S283614Y	42.4	43.5	44.5	43.3	43.0	44.5	45.8	45.9	45.6	44.7	46.6	45.3	45.2	44.7	43.6	43.1	43.5	44.1
Portugal . . . . . S788320Y	32.3	34.7	33.7	33.8	32.0	32.9	33.0	33.4	34.2	34.6	34.4	35.3	35.7	34.9	36.0	36.7	37.5	37.5
Slovenia . . . . . S410866Y	....	....	....	....	39.5	38.3	37.2	38.1	38.4	37.7	38.0	38.2	38.4	38.4	38.7	38.4	38.1	37.7
Slovakia . . . . . S603181Y	....	....	....	....	40.4	39.5	37.4	36.8	35.5	34.2	33.2	33.3	33.2	31.7	31.4	29.3	29.2	29.2
Finland . . . . . S419086Y	46.4	46.3	44.8	47.0	45.7	46.9	46.2	46.0	45.6	47.0	44.4	44.5	43.9	43.4	43.9	43.4	42.9	42.6
Euro area . . . . . S826271Y	41.8	42.7	43.2	42.8	40.7	41.5	41.9	41.8	42.3	42.0	41.1	40.8	40.8	40.5	40.6	41.2	41.3	40.7
Euro area excluding Italy . . . . . S842773Y	42.1	42.6	42.9	43.1	40.6	41.5	41.6	41.7	42.3	42.1	41.1	40.8	40.6	40.4	40.6	41.0	41.0	40.2
Bulgaria . . . . . S646155Y	....	....	....	....	36.8	37.2	34.0	34.7	31.7	33.0	32.2	30.3	33.0	34.0	34.7	34.0	34.3	33.1
Czech Republic . . . . . S291136Y	....	....	....	....	36.2	34.7	35.0	33.4	34.1	33.9	34.0	34.8	35.8	37.3	36.8	36.5	36.9	36.0
Denmark . . . . . S678500Y	47.8	48.3	49.8	50.9	49.8	50.2	49.9	50.2	50.9	50.2	49.3	48.7	48.9	49.9	51.7	50.5	49.4	49.2
Estonia . . . . . S867040Y	....	....	....	....	36.4	34.4	34.4	34.2	32.7	31.3	30.5	31.2	30.9	30.5	30.7	31.1	32.8	32.4
Latvia . . . . . S036548Y	....	....	....	....	33.2	30.8	32.1	33.8	32.3	29.7	28.7	28.5	28.7	28.5	28.9	30.3	30.4	29.3
Lithuania . . . . . S696348Y	....	....	....	....	....	....	31.0	32.0	32.1	30.4	29.0	28.6	28.2	28.4	28.5	29.4	29.8	30.2
Hungary . . . . . S827446Y	....	....	....	....	....	39.6	38.0	38.0	38.2	38.6	38.3	38.0	37.8	37.5	37.3	37.0	39.5	40.3
Poland . . . . . S578412Y	....	....	....	....	37.3	37.4	36.6	35.6	35.1	32.8	32.6	33.1	32.6	31.6	32.9	33.9	34.7	34.2
Romania . . . . . S987464Y	....	....	....	....	29.3	27.3	26.9	29.0	31.7	30.6	28.9	28.5	28.1	27.7	28.5	29.2	30.0	29.5
Sweden . . . . . S206530Y	50.2	48.7	47.7	47.1	47.8	50.3	50.7	51.4	51.8	51.9	50.0	48.2	48.7	49.1	49.9	49.4	48.7	47.6
United Kingdom . . . . . S792164Y	35.2	34.0	33.1	33.7	35.0	34.9	35.5	36.5	36.9	37.5	37.4	36.0	35.8	36.4	37.4	38.2	37.7	38.2
EU excluding euro area . . . . . S855559Y	....	....	....	....	38.3	38.6	38.4	38.9	39.3	39.3	38.8	37.7	37.7	38.1	38.9	39.2	38.9	38.9
EU . . . . . S087728Y	41.3	41.8	42.0	41.8	40.2	40.9	41.1	41.1	41.6	41.3	40.5	40.0	40.0	39.9	40.1	40.7	40.7	40.2
EU excluding Italy . . . . . S869738Y	41.4	41.6	41.6	41.9	40.0	40.8	40.7	40.9	41.5	41.2	40.4	39.8	39.8	39.7	40.1	40.5	40.3	39.8
United States . . . . . S960925Y	....	....	....	....	....	....	....	....	....	....	....	....	....	....	....	....	....	....
Japan . . . . . S508404Y	....	....	....	....	....	....	....	....	....	....	....	....	....	....	....	....	....	....
Canada . . . . . S820519Y	....	....	....	....	....	....	....	....	....	....	....	....	....	....	....	....	....	....

**Table 9**  
**TUEE0180**

**Tax revenue and social security contributions, excluding capital taxes**

(as a percentage of GDP)

	1991	1992	1993	1994	1995	1996	1997	1998	1999	2000	2001	2002	2003	2004	2005	2006	2007	2008
Italy . . . . . S249600Y	39.2	39.9	42.2	40.7	40.6	41.4	43.0	42.0	42.3	41.5	41.2	40.6	40.0	40.0	40.3	42.0	43.1	42.7
Belgium . . . . . S448954Y	45.8	46.1	46.6	47.4	44.5	45.2	45.7	46.3	46.4	46.0	46.1	46.4	45.9	45.8	45.8	45.3	44.8	45.2
Germany . . . . . S448636Y	40.9	41.8	42.3	42.8	40.3	41.4	41.4	41.7	42.5	42.5	40.8	40.5	40.6	39.7	39.7	40.1	40.3	40.2
Ireland . . . . . S030391Y	34.1	34.5	34.5	35.6	33.6	33.7	33.0	32.1	32.2	32.0	30.4	29.4	30.0	31.3	31.7	33.0	32.1	29.6
Greece . . . . . S043169Y	31.1	31.7	32.3	33.2	30.6	31.0	32.3	34.2	35.3	35.7	34.4	35.0	33.8	32.9	33.1	33.0	34.0	34.0
Spain . . . . . S225994Y	35.1	36.8	35.9	35.5	32.6	33.0	33.4	33.6	34.2	34.4	34.0	34.6	34.6	35.0	36.0	37.0	37.6	33.6
France . . . . . S570008Y	44.3	43.9	44.4	44.7	43.6	44.9	45.1	45.1	45.9	45.1	44.8	44.2	44.1	44.4	44.8	45.1	44.4	44.1
Cyprus . . . . . S046506Y	....	....	....	....	....	....	....	27.6	27.9	29.9	30.9	31.2	32.9	32.5	34.4	36.2	41.4	40.1
Luxembourg . . . . . S839409Y	....	....	....	....	37.3	37.8	39.5	39.7	38.5	39.3	40.1	39.7	38.6	37.8	38.2	36.3	37.1	38.9
Malta . . . . . S209140Y	....	....	....	....	27.8	26.7	28.7	26.8	28.6	29.2	31.8	32.9	32.7	33.8	34.5	34.4	35.4	35.5
Netherlands . . . . . S339431Y	45.4	45.4	46.5	44.4	40.0	40.2	39.6	39.4	40.3	39.8	38.4	37.8	37.5	37.7	37.8	39.1	38.8	39.0
Austria . . . . . S260869Y	42.3	43.4	44.4	43.2	42.9	44.4	45.8	45.9	45.6	44.7	46.6	45.3	45.1	44.7	43.5	43.0	43.4	44.1
Portugal . . . . . S761261Y	32.1	34.6	33.6	33.7	31.9	32.9	32.9	33.4	34.1	34.5	34.3	35.2	35.6	34.9	36.0	36.7	37.5	37.5
Slovenia . . . . . S389111Y	....	....	....	....	39.4	38.3	37.2	37.9	38.2	37.6	37.8	38.1	38.4	38.4	38.7	38.3	38.0	37.6
Slovakia . . . . . S579657Y	....	....	....	....	40.4	39.5	37.4	36.8	35.4	34.1	33.2	33.3	33.2	31.7	31.4	29.3	29.2	29.2
Finland . . . . . S400460Y	46.2	46.1	44.6	46.8	45.5	46.7	46.0	45.7	45.4	46.7	44.1	44.2	43.6	43.1	43.6	43.1	42.6	42.2
Euro area . . . . . S869777Y	41.5	42.0	42.7	42.4	40.4	41.3	41.6	41.5	42.1	41.7	40.9	40.5	40.3	40.1	40.3	40.9	41.1	40.4
Euro area excluding Italy . . . . . S888601Y	41.7	42.2	42.5	42.6	40.3	41.3	41.3	41.4	42.0	41.8	40.8	40.5	40.3	40.1	40.3	40.7	40.6	39.9
Bulgaria . . . . . S622647Y	....	....	....	....	36.6	37.0	33.9	34.5	31.6	32.8	32.1	30.1	32.8	33.8	34.4	33.6	33.7	32.6
Czech Republic . . . . . S263262Y	....	....	....	....	36.2	34.7	35.0	33.4	34.1	33.9	34.0	34.8	35.8	37.2	36.8	36.5	36.9	36.0
Denmark . . . . . S651514Y	47.5	48.0	49.5	50.7	49.6	49.9	49.7	50.0	50.7	49.9	49.1	48.5	48.7	49.7	51.5	50.3	49.2	48.9
Estonia . . . . . S846889Y	....	....	....	....	36.4	34.4	34.4	34.2	32.7	31.3	30.5	31.2	30.9	30.5	30.7	31.1	32.8	32.4
Latvia . . . . . S018646Y	....	....	....	....	33.2	30.8	32.1	33.8	32.3	29.7	28.7	28.5	28.7	28.5	28.9	30.3	30.3	29.3
Lithuania . . . . . S671587Y	....	....	....	....	28.6	27.9	31.0	32.0	32.1	30.4	29.0	28.5	28.2	28.4	28.5	29.4	29.8	30.2
Hungary . . . . . S799667Y	....	....	....	....	41.7	39.5	38.0	38.0	38.1	38.5	38.3	38.0	37.7	37.4	37.2	36.9	39.4	40.2
Poland . . . . . S545921Y	....	....	....	....	37.2	37.4	36.6	35.6	35.1	32.7	32.5	33.0	32.5	31.6	32.9	33.9	34.7	34.1
Romania . . . . . S966098Y	....	....	....	....	29.3	27.3	26.9	29.0	31.7	30.6	28.9	28.5	28.1	27.7	28.5	29.2	30.0	29.5
Sweden . . . . . S169929Y	50.1	48.6	47.6	47.0	47.7	50.2	50.6	51.3	51.7	51.8	49.9	48.1	48.6	49.0	49.9	49.4	48.7	47.6
United Kingdom . . . . . S767898Y	35.0	33.8	32.9	33.5	34.8	34.7	35.3	36.3	36.7	37.3	37.2	35.8	35.6	36.2	37.1	37.9	37.4	37.0
EU excluding euro area . . . . . S902801Y	....	....	....	....	38.2	38.4	38.2	38.8	39.1	39.1	38.6	37.5	37.5	37.9	38.7	39.1	38.7	38.2
EU . . . . . S062814Y	40.9	41.2	41.6	41.5	39.9	40.7	40.8	40.8	41.3	41.0	40.3	39.7	39.6	39.5	39.9	40.4	40.4	39.8
EU excluding Italy . . . . . S841580Y	41.0	41.2	41.3	41.5	39.8	40.5	40.5	40.7	41.2	41.0	40.1	39.6	39.5	39.5	39.8	40.2	40.0	39.4
United States . . . . . S947599Y	26.9	26.7	27.0	27.4	27.7	28.1	28.5	29.0	29.1	29.6	28.6	26.3	25.8	26.0	27.5	28.2	28.3	....
Japan . . . . . S490803Y	....	....	....	....	....	27.3	27.4	27.0	26.9	27.3	28.3	27.0	26.9	26.3	27.4	28.5	28.9	....
Canada . . . . . S804070Y	35.8	36.1	35.6	35.1	35.1	35.8	36.4	36.4	36.2	35.7	34.6	33.6	33.3	33.3	33.3	33.0	33.1	....

**Table 10**  
**TUEE0210**

**Direct taxes**

(as a percentage of GDP)

	1991	1992	1993	1994	1995	1996	1997	1998	1999	2000	2001	2002	2003	2004	2005	2006	2007	2008
Italy . . . . . S180050Y	14.0	14.3	15.7	14.6	14.5	15.1	15.8	14.3	14.9	14.4	14.7	13.9	13.4	13.3	13.3	14.4	15.1	15.4
Belgium . . . . . S387637Y	16.3	16.2	16.2	17.4	16.3	16.3	16.8	17.3	16.9	17.1	17.3	17.1	16.7	16.7	16.9	16.5	16.3	16.5
Germany . . . . . S389099Y	11.3	11.6	11.2	10.8	10.8	11.2	11.0	11.3	11.8	12.3	10.9	10.6	10.4	10.0	10.1	10.8	11.2	11.3
Ireland . . . . . S958516Y	13.7	14.1	14.8	15.2	13.5	13.9	13.8	13.6	13.7	13.3	12.6	11.5	11.8	12.3	12.2	13.0	12.6	11.1
Greece . . . . . S974469Y	5.5	5.4	5.7	6.8	6.8	6.5	7.1	8.7	9.0	9.7	8.6	8.6	7.9	8.0	8.4	7.9	7.9	7.7
Spain . . . . . S161705Y	11.6	12.0	11.5	11.0	9.9	10.1	10.3	10.0	10.0	10.2	10.0	10.4	10.1	10.2	10.9	11.7	12.9	10.7
France . . . . . S504646Y	9.2	8.8	9.0	9.2	8.1	8.6	9.2	11.4	12.0	12.0	12.1	11.3	10.9	11.1	11.3	11.7	11.4	11.4
Cyprus . . . . . S936406Y	....	....	....	....	....	....	....	9.7	10.6	10.9	11.1	11.1	9.6	8.0	9.2	10.8	14.0	13.1
Luxembourg . . . . . S776542Y	....	....	....	....	15.3	15.8	16.4	16.0	14.8	14.9	15.2	15.3	14.6	13.0	13.6	13.0	13.4	14.4
Malta . . . . . S160345Y	....	....	....	....	8.2	7.2	8.2	7.9	8.7	9.1	10.1	11.3	11.8	11.2	11.6	11.9	13.3	13.1
Netherlands . . . . . S300326Y	16.2	15.3	16.2	13.6	12.3	12.7	12.1	11.9	11.8	11.6	11.4	11.4	10.7	10.4	11.4	11.6	12.0	11.6
Austria . . . . . S194662Y	11.9	12.4	12.5	11.1	11.7	12.7	13.5	13.7	13.3	13.2	15.0	13.9	13.7	13.5	12.8	12.9	13.5	14.0
Portugal . . . . . S703073Y	8.8	9.8	9.0	8.8	8.4	9.1	9.1	8.9	9.3	9.8	9.4	9.3	8.6	8.5	8.4	8.8	9.7	9.9
Slovenia . . . . . S337752Y	....	....	....	....	6.9	7.4	7.4	7.3	7.3	7.3	7.5	7.8	8.0	8.2	8.7	9.1	9.5	9.3
Slovakia . . . . . S522744Y	....	....	....	....	10.8	9.7	9.2	9.0	9.0	7.4	7.5	7.0	7.1	6.1	6.0	6.1	6.2	6.4
Finland . . . . . S337376Y	17.6	16.9	15.1	16.8	17.3	18.9	18.4	18.8	18.5	21.1	18.9	18.8	17.8	17.5	17.6	17.2	17.5	17.4
Euro area . . . . . S913107Y	11.9	11.9	12.1	11.6	11.1	11.6	11.8	12.1	12.5	12.6	12.2	11.8	11.4	11.3	11.5	12.1	12.4	12.2
Euro area excluding Italy . . . . . S920738Y	11.4	11.4	11.3	11.0	10.4	10.9	11.0	11.7	12.0	12.3	11.7	11.4	11.0	10.9	11.1	11.6	11.9	11.6
Bulgaria . . . . . S574561Y	....	....	....	....	11.8	12.8	11.2	9.9	7.6	6.9	7.4	6.3	6.5	5.8	5.5	5.5	6.6	6.5
Czech Republic . . . . . S201997Y	....	....	....	....	9.6	8.3	8.8	8.3	8.5	8.3	8.8	9.1	9.6	9.6	9.2	9.2	9.4	8.7
Denmark . . . . . S582991Y	28.5	29.0	30.1	30.6	30.7	30.7	30.3	29.9	30.1	30.3	29.3	29.1	29.3	30.2	31.7	30.4	29.6	29.6
Estonia . . . . . S786636Y	....	....	....	....	10.9	9.3	9.3	10.4	9.8	7.8	7.3	7.6	8.1	8.0	7.0	7.2	7.8	8.1
Latvia . . . . . S968045Y	....	....	....	....	7.1	7.0	7.5	8.0	7.7	7.3	7.6	7.8	7.6	7.9	7.9	8.5	9.2	9.7
Lithuania . . . . . S617862Y	....	....	....	....	8.7	8.2	8.9	9.0	9.2	8.4	7.8	7.5	8.0	8.7	9.0	9.6	9.3	9.3
Hungary . . . . . S724792Y	....	....	....	....	9.1	9.1	8.9	8.8	9.3	9.5	10.0	10.1	9.5	9.0	9.0	9.3	10.2	10.6
Poland . . . . . S478108Y	....	....	....	....	11.7	11.3	11.1	10.8	7.7	7.2	6.6	6.9	6.6	6.4	7.0	7.5	8.6	8.6
Romania . . . . . S892718Y	....	....	....	....	11.2	10.3	10.4	8.3	7.9	7.0	6.4	5.8	6.0	6.4	5.3	6.0	6.8	6.9
Sweden . . . . . S091709Y	18.8	19.3	19.5	19.7	19.6	20.6	21.1	21.0	21.7	21.9	19.5	17.5	18.2	19.0	19.9	19.9	19.1	17.5
United Kingdom . . . . . S707414Y	12.8	12.1	11.4	11.9	15.0	14.7	15.0	16.2	16.1	16.4	16.6	15.5	14.9	15.2	16.1	16.9	16.6	16.6
EU excluding euro area . . . . . S933840Y	....	....	....	....	16.4	16.3	16.2	16.7	16.6	16.7	16.2	15.3	15.1	15.3	15.9	16.3	15.9	15.5
EU . . . . . S986535Y	12.6	12.5	12.6	12.3	12.2	12.6	12.9	13.2	13.5	13.7	13.3	12.7	12.3	12.3	12.7	13.2	13.4	13.1
EU excluding Italy . . . . . S782247Y	12.3	12.2	12.0	11.9	11.9	12.2	12.4	13.1	13.3	13.6	13.1	12.5	12.2	12.2	12.6	13.0	13.1	12.7
United States . . . . . S880821Y	12.1	11.9	12.2	12.4	13.0	13.6	14.1	14.5	14.7	15.3	14.2	11.9	11.3	11.6	13.0	13.8	14.0	....
Japan . . . . . S413980Y	....	....	....	....	....	9.8	9.8	8.6	8.3	8.8	9.3	8.0	7.6	7.6	8.3	9.0	9.5	....
Canada . . . . . S738314Y	16.6	16.2	15.7	15.7	16.1	17.1	17.7	17.8	18.0	18.2	16.9	15.5	15.2	15.7	16.0	16.2	16.7	....



**Table 11**  
**TUEE0220**

**Indirect taxes**

(as a percentage of GDP)

	1991	1992	1993	1994	1995	1996	1997	1998	1999	2000	2001	2002	2003	2004	2005	2006	2007	2008
Italy . . . . . S201645Y	10.8	11.0	11.7	11.5	11.8	11.6	12.2	15.1	14.9	14.7	14.2	14.3	14.0	14.0	14.2	14.8	14.7	13.7
Belgium . . . . . S406741Y	12.1	12.1	12.3	12.6	11.9	12.5	12.7	12.7	13.1	12.9	12.5	12.7	12.7	13.0	13.0	13.1	12.8	12.5
Germany . . . . . S406400Y	12.2	12.4	12.7	13.1	11.1	11.2	11.2	11.4	12.0	11.9	11.7	11.7	11.8	11.8	11.8	12.1	12.6	12.5
Ireland . . . . . S975307Y	15.2	15.2	14.4	15.3	13.4	13.5	13.3	12.9	13.0	13.1	12.0	12.2	12.4	13.0	13.4	13.9	13.3	11.9
Greece . . . . . S998018Y	14.6	15.3	14.7	14.3	12.4	12.8	13.0	13.1	13.8	13.6	13.3	12.9	12.1	11.6	11.5	12.0	12.2	12.3
Spain . . . . . S179175Y	10.3	10.8	10.1	10.6	10.0	10.0	10.3	10.9	11.4	11.4	11.0	11.2	11.5	11.9	12.2	12.4	11.7	9.8
France . . . . . S520395Y	14.5	14.3	14.3	14.7	15.2	15.9	15.9	15.8	15.8	15.2	14.8	14.9	15.0	15.3	15.4	15.3	15.1	14.8
Cyprus . . . . . S953793Y	....	....	....	....	....	....	....	11.1	10.7	12.4	13.0	13.3	16.4	16.8	16.9	17.6	19.7	18.7
Luxembourg . . . . . S795162Y	14.7	15.3	15.8	16.1	11.0	11.1	12.1	12.5	12.7	13.5	13.1	12.7	12.3	13.2	13.2	12.5	12.6	12.8
Malta . . . . . S178664Y	....	....	....	....	12.3	11.7	12.4	11.4	12.4	12.6	13.3	13.6	12.9	14.6	14.9	14.9	14.7	14.7
Netherlands . . . . . S313148Y	11.9	12.3	12.5	12.4	10.7	11.1	11.2	11.4	11.9	11.7	12.2	12.1	12.1	12.4	12.4	12.6	12.6	12.2
Austria . . . . . S219095Y	15.2	15.2	15.4	15.3	14.0	14.5	14.9	14.9	15.1	14.7	14.8	14.9	14.9	14.9	14.5	14.1	14.1	14.1
Portugal . . . . . S719112Y	12.9	13.7	12.9	13.4	13.0	13.3	13.1	13.6	14.0	13.5	13.5	14.2	14.8	14.2	15.0	15.4	15.0	14.6
Slovenia . . . . . S350210Y	....	....	....	....	15.5	15.7	15.3	16.0	16.6	15.8	15.6	15.9	16.0	15.7	15.5	14.9	14.6	14.0
Slovakia . . . . . S537018Y	....	....	....	....	14.5	13.8	13.1	12.8	12.4	12.5	11.4	11.6	12.1	12.3	12.6	11.3	11.2	10.7
Finland . . . . . S356873Y	15.0	14.7	14.5	14.2	13.5	13.7	14.3	14.0	14.0	13.5	13.0	13.4	13.9	13.8	13.9	13.6	13.0	12.8
Euro area . . . . . S943962Y	12.6	12.7	12.9	13.1	12.3	12.5	12.6	13.3	13.5	13.3	13.0	13.1	13.1	13.2	13.4	13.5	13.5	12.9
Euro area excluding Italy . S953697Y	12.9	13.0	13.1	13.4	12.4	12.6	12.7	12.9	13.3	13.0	12.7	12.8	12.9	13.1	13.2	13.3	13.2	12.8
Bulgaria . . . . . S589224Y	....	....	....	....	12.8	13.5	12.7	13.3	13.7	15.0	14.6	14.4	15.8	17.5	18.7	19.4	18.5	18.0
Czech Republic . . . . . S221602Y	....	....	....	....	12.3	12.1	11.5	11.0	11.5	11.3	11.0	10.8	11.1	11.6	11.5	11.0	11.2	11.1
Denmark . . . . . S605129Y	16.7	16.6	16.9	17.3	16.8	17.2	17.4	18.1	18.1	17.0	17.2	17.4	17.2	17.4	17.7	17.9	17.8	17.4
Estonia . . . . . S802124Y	....	....	....	....	13.2	13.4	13.7	12.5	11.8	12.4	12.4	12.5	12.2	12.1	13.2	13.4	13.8	12.3
Latvia . . . . . S987489Y	....	....	....	....	14.1	13.0	13.9	15.0	13.7	12.3	11.8	11.2	12.1	11.7	12.4	12.8	12.2	10.8
Lithuania . . . . . S631171Y	....	....	....	....	12.4	11.9	13.7	13.9	13.7	12.6	12.2	12.4	11.7	11.1	11.0	11.1	11.6	11.5
Hungary . . . . . S754417Y	....	....	....	....	17.4	16.6	15.1	15.4	15.9	16.1	15.3	15.0	15.6	16.1	15.5	15.0	15.6	15.7
Poland . . . . . S501811Y	....	....	....	....	14.2	14.4	13.9	13.1	13.6	12.6	12.5	13.2	13.2	12.9	13.6	14.2	14.2	14.2
Romania . . . . . S913927Y	....	....	....	....	9.8	9.2	9.2	11.3	12.3	12.2	11.3	11.6	12.3	11.7	12.9	12.8	12.7	12.3
Sweden . . . . . S112081Y	16.8	15.4	14.6	13.9	15.3	15.8	16.0	16.8	18.0	16.0	16.1	16.4	16.6	16.4	16.5	16.7	16.8	18.2
United Kingdom . . . . . S719384Y	16.0	15.6	15.3	15.4	12.4	12.6	12.9	12.8	13.2	13.2	12.9	12.9	12.8	12.9	12.6	12.6	12.5	11.9
EU excluding euro area . . S965044Y	....	....	....	....	13.4	13.7	13.6	13.7	14.1	13.8	13.5	13.6	13.6	13.6	13.6	13.6	13.6	13.4
EU . . . . . S010073Y	13.3	13.3	13.3	13.5	12.5	12.7	12.9	13.4	13.7	13.4	13.1	13.2	13.2	13.3	13.4	13.6	13.5	13.0
EU excluding Italy . . . . . S797708Y	13.7	13.6	13.6	13.8	12.6	12.9	13.0	13.1	13.5	13.2	13.0	13.0	13.1	13.2	13.3	13.4	13.3	13.0
United States . . . . . S901790Y	7.6	7.6	7.6	7.7	7.5	7.4	7.4	7.3	7.3	7.2	7.2	7.3	7.4	7.4	7.5	7.4	7.3	....
Japan . . . . . S437186Y	....	....	....	....	....	8.0	7.9	8.5	8.6	8.6	8.6	8.4	8.4	8.3	8.4	8.6	8.4	....
Canada . . . . . S754200Y	14.7	14.9	14.8	14.3	14.1	14.0	14.0	13.9	13.6	12.9	13.0	13.1	13.0	12.8	12.6	12.2	11.9	....

**Table 12**  
**TUEE0230**

**Social security contributions**

(as a percentage of GDP)

	1991	1992	1993	1994	1995	1996	1997	1998	1999	2000	2001	2002	2003	2004	2005	2006	2007	2008
Italy . . . . . S153295Y	14.4	14.7	14.9	14.6	14.4	14.7	15.0	12.6	12.5	12.4	12.3	12.5	12.6	12.6	12.8	12.8	13.3	13.7
Belgium . . . . . S373086Y	17.5	17.8	18.1	17.5	16.4	16.4	16.3	16.4	16.4	16.0	16.3	16.6	16.5	16.2	15.9	15.7	15.7	16.2
Germany . . . . . S374045Y	17.5	17.8	18.4	18.9	18.3	19.0	19.2	18.9	18.7	18.3	18.2	18.2	18.3	17.9	17.7	17.2	16.5	16.4
Ireland . . . . . S944292Y	5.2	5.3	5.3	5.1	6.7	6.3	5.9	5.5	5.6	5.7	5.8	5.7	5.8	6.0	6.1	6.1	6.3	6.7
Greece . . . . . S951517Y	11.1	11.0	11.9	12.1	11.5	11.8	12.1	12.4	12.5	12.5	12.6	13.6	13.8	13.3	13.2	13.2	13.9	14.0
Spain . . . . . S143558Y	13.2	14.0	14.3	14.0	12.7	12.9	12.8	12.7	12.8	12.9	13.0	13.0	13.0	13.0	12.9	12.9	13.0	13.0
France . . . . . S488177Y	20.7	20.9	21.1	20.7	20.3	20.5	20.0	17.9	18.1	17.9	17.9	18.0	18.2	18.0	18.1	18.2	18.0	17.9
Cyprus . . . . . S914845Y	....	....	....	....	....	....	....	6.9	6.6	6.5	6.8	6.7	7.0	7.7	8.3	7.8	7.7	8.3
Luxembourg . . . . . S760438Y	....	....	....	....	11.0	10.9	11.1	11.2	11.0	10.9	11.8	11.8	11.7	11.6	11.4	10.8	11.0	11.7
Malta . . . . . S147558Y	....	....	....	....	7.3	7.7	8.1	7.4	7.5	7.5	8.4	8.0	8.0	8.0	7.9	7.6	7.3	7.6
Netherlands . . . . . S283873Y	17.2	17.8	17.9	18.4	17.1	16.4	16.2	16.1	16.6	16.4	14.7	14.3	14.7	14.9	13.9	14.9	14.3	15.2
Austria . . . . . S172202Y	15.2	15.8	16.5	16.8	17.2	17.3	17.3	17.2	17.2	16.8	16.7	16.4	16.5	16.3	16.2	16.0	15.9	16.0
Portugal . . . . . S684351Y	10.5	11.1	11.7	11.5	10.5	10.5	10.7	10.9	10.8	11.2	11.4	11.7	12.2	12.2	12.5	12.5	12.7	13.0
Slovenia . . . . . S326650Y	....	....	....	....	17.0	15.2	14.5	14.6	14.3	14.5	14.7	14.5	14.4	14.5	14.5	14.3	14.0	14.3
Slovakia . . . . . S499204Y	....	....	....	....	15.1	16.0	15.1	15.0	14.1	14.2	14.4	14.7	14.0	13.3	12.8	11.9	11.8	12.1
Finland . . . . . S321934Y	13.6	14.5	15.0	15.8	14.7	14.2	13.3	13.0	12.9	12.1	12.2	12.0	11.9	11.8	12.2	12.3	12.0	12.1
Euro area . . . . . S977512Y	17.0	17.4	17.7	17.7	17.0	17.2	17.2	16.1	16.1	15.8	15.6	15.6	15.7	15.5	15.4	15.3	15.1	15.3
Euro area excluding Italy . . S001425Y	17.5	17.8	18.2	18.3	17.5	17.8	17.6	16.9	16.8	16.5	16.3	16.3	16.4	16.2	16.0	15.8	15.5	15.6
Bulgaria . . . . . S557695Y	....	....	....	....	12.0	10.8	10.0	11.4	10.3	11.0	10.0	9.5	10.6	10.5	10.3	8.7	8.7	8.1
Czech Republic . . . . . S184305Y	....	....	....	....	14.4	14.2	14.6	14.1	14.1	14.2	14.2	14.9	15.1	16.1	16.2	16.3	16.3	16.2
Denmark . . . . . S569172Y	2.3	2.4	2.5	2.8	2.1	2.0	2.0	2.0	2.5	2.6	2.6	2.1	2.1	2.1	2.0	1.9	1.9	1.8
Estonia . . . . . S773043Y	....	....	....	....	12.3	11.7	11.4	11.3	11.1	11.1	10.8	11.1	10.7	10.5	10.4	10.4	11.1	12.1
Latvia . . . . . S954776Y	....	....	....	....	12.0	10.9	10.7	10.8	10.9	10.1	9.4	9.5	9.1	8.9	8.6	9.0	8.9	8.8
Lithuania . . . . . S601601Y	....	....	....	....	7.5	7.9	8.5	9.1	9.3	9.4	9.0	8.6	8.5	8.7	8.4	8.7	8.9	9.3
Hungary . . . . . S702819Y	....	....	....	....	15.2	13.7	14.0	13.8	13.0	12.9	12.9	12.9	12.6	12.4	12.6	12.6	13.6	13.9
Poland . . . . . S456361Y	....	....	....	....	11.3	11.6	11.7	11.6	13.7	12.9	13.4	12.9	12.8	12.3	12.3	12.2	12.0	11.4
Romania . . . . . S873877Y	....	....	....	....	8.3	7.8	7.3	9.4	11.5	11.4	11.2	11.1	9.9	9.7	10.3	10.3	10.6	10.3
Sweden . . . . . S072170Y	14.6	13.9	13.4	13.4	12.8	13.8	13.6	13.6	12.0	13.8	14.3	14.1	13.8	13.5	13.4	12.8	12.8	11.9
United Kingdom . . . . . S693235Y	6.2	6.1	6.1	6.2	7.4	7.3	7.4	7.3	7.5	7.6	7.7	7.4	7.8	8.1	8.4	8.4	8.2	8.5
EU excluding euro area . . S013962Y	....	....	....	....	8.3	8.5	8.4	8.4	8.5	8.7	8.9	8.7	8.9	9.0	9.2	9.2	9.2	9.3
EU . . . . . S967966Y	15.0	15.4	15.7	15.7	15.2	15.3	15.1	14.2	14.2	13.9	13.9	13.8	14.0	13.9	13.8	13.7	13.5	13.7
EU excluding Italy . . . . . S754260Y	15.1	15.4	15.7	15.8	15.3	15.4	15.1	14.5	14.4	14.2	14.1	14.0	14.2	14.0	13.9	13.8	13.6	13.7
United States . . . . . S870398Y	7.2	7.2	7.2	7.2	7.2	7.1	7.1	7.1	7.1	7.2	7.2	7.2	7.1	7.1	7.0	7.0	7.0	....
Japan . . . . . S400980Y	....	....	....	....	....	9.5	9.7	9.9	10.0	10.0	10.4	10.5	10.9	10.4	10.6	10.8	10.9	....
Canada . . . . . S730785Y	4.5	5.0	5.0	5.0	5.0	4.8	4.8	4.8	4.7	4.6	4.8	5.0	5.0	4.8	4.8	4.7	4.5	....

**Table 13**  
**TUEE0240**

**Total expenditure (Regulation EC 1500/2000)**

(as a percentage of GDP)

	1991	1992	1993	1994	1995	1996	1997	1998	1999	2000	2001	2002	2003	2004	2005	2006	2007	2008
Italy . . . . . S357242Y	54.0	55.3	56.3	53.5	52.5	52.5	50.3	49.0	48.1	46.2	48.0	47.2	48.3	47.7	48.1	48.7	47.9	48.8
Traditional Italy account . . S312773Y	54.3	55.6	56.6	53.8	52.7	52.6	50.3	49.0	48.1	46.2	48.1	47.4	48.6	48.0	48.5	49.2	48.4	49.3
Belgium . . . . . S519590Y	....	....	....	....	52.1	52.4	51.1	50.3	50.2	49.1	49.2	49.8	51.2	49.4	52.1	48.4	48.3	49.8
Germany . . . . . S531577Y	....	....	....	....	48.3	49.3	48.4	48.0	48.1	45.1	47.6	48.1	48.5	47.1	46.8	45.3	44.2	43.9
Ireland . . . . . S111425Y	....	....	....	....	41.1	39.1	37.0	34.4	34.0	31.5	33.4	33.7	33.4	33.7	33.7	34.0	35.7	41.0
Greece . . . . . S112222Y	....	....	....	....	46.6	44.9	45.8	45.1	45.2	46.6	45.3	45.0	44.9	45.5	43.1	42.0	43.7	44.9
Spain . . . . . S288441Y	....	....	....	....	44.4	43.2	41.6	41.1	39.9	39.1	38.6	38.9	38.4	38.9	38.4	38.5	38.8	40.5
France . . . . . S664973Y	....	....	....	....	54.4	54.5	54.1	52.7	52.6	51.6	51.6	52.6	53.3	53.2	53.3	52.7	52.3	52.7
Cyprus . . . . . S137386Y	....	....	....	....	....	....	....	36.7	36.8	37.0	38.2	40.2	45.0	42.8	43.6	43.4	42.9	44.0
Luxembourg . . . . . S921841Y	....	....	....	....	39.7	41.1	40.7	41.1	39.2	37.6	38.1	41.5	41.8	42.5	41.6	38.6	37.2	40.7
Malta . . . . . S256142Y	....	....	....	....	39.7	42.6	42.9	43.0	43.0	41.0	43.1	43.2	47.8	45.5	44.7	43.7	42.6	45.3
Netherlands . . . . . S419325Y	....	....	....	....	51.6	49.4	47.5	46.7	46.0	44.2	45.3	46.2	47.1	46.1	44.8	45.6	45.3	45.4
Austria . . . . . S341540Y	....	....	....	....	56.2	55.8	53.5	53.8	53.5	52.0	51.5	50.8	51.4	53.9	49.8	49.3	48.5	48.6
Portugal . . . . . S841563Y	....	....	....	....	43.4	44.1	43.2	42.8	43.2	43.1	44.4	44.2	45.4	46.5	47.7	46.3	45.7	45.9
Slovenia . . . . . S455538Y	....	....	....	....	52.6	44.5	44.8	45.7	45.4	46.8	47.7	46.3	46.4	45.8	45.3	44.6	42.4	43.6
Slovakia . . . . . S645755Y	....	....	....	....	48.6	53.7	48.9	45.8	47.8	50.9	44.5	45.0	40.1	37.6	38.2	36.9	34.4	34.9
Finland . . . . . S461095Y	....	....	....	....	61.5	59.9	56.2	52.6	51.5	48.3	47.8	48.8	49.9	49.9	50.1	48.6	47.3	48.3
Euro area . . . . . S029982Y	....	....	....	....	50.7	50.7	49.4	48.5	48.1	46.3	47.3	47.6	48.0	47.5	47.3	46.6	46.0	46.6
Euro area excluding Italy . S042055Y	....	....	....	....	50.3	50.3	49.2	48.4	48.1	46.3	47.1	47.6	48.0	47.4	47.1	46.2	45.7	46.2
Bulgaria . . . . . S694475Y	....	....	....	....	....	....	....	....	41.8	42.6	40.3	40.3	40.3	39.7	39.3	36.5	41.5	37.4
Czech Republic . . . . . S332257Y	....	....	....	....	54.5	42.6	43.2	43.2	42.3	41.8	44.5	46.3	47.3	45.2	45.0	43.9	42.6	42.4
Denmark . . . . . S732769Y	....	....	....	....	59.3	58.8	56.6	56.2	55.3	53.5	54.1	54.5	54.9	54.4	52.6	51.5	50.9	51.8
Estonia . . . . . S918835Y	....	....	....	....	41.4	39.6	37.5	39.4	40.3	36.5	35.1	35.9	34.9	34.1	34.0	34.2	35.5	40.9
Latvia . . . . . S078989Y	....	....	....	....	38.6	36.9	36.3	40.2	41.8	37.3	34.6	35.6	34.8	35.8	35.6	38.2	35.9	39.5
Lithuania . . . . . S733959Y	....	....	....	....	35.7	37.4	50.3	40.4	40.1	39.1	36.8	34.7	33.2	33.3	33.3	33.6	34.9	37.2
Hungary . . . . . S895188Y	....	....	....	....	....	51.2	50.8	51.4	48.6	46.5	47.3	51.4	49.2	49.0	50.1	51.9	49.7	49.9
Poland . . . . . S642387Y	....	....	....	....	47.7	51.0	46.4	44.3	42.7	41.1	43.8	44.2	44.6	42.6	43.4	43.8	42.1	43.1
Romania . . . . . S038230Y	....	....	....	....	49.8	34.7	34.9	35.2	39.6	38.5	36.0	35.0	33.5	33.5	33.5	35.3	36.6	38.5
Sweden . . . . . S271698Y	....	....	....	....	65.2	62.9	60.8	59.0	58.4	55.6	55.6	56.5	56.7	55.3	55.0	54.0	52.5	53.1
United Kingdom . . . . . S840831Y	....	....	....	....	43.9	42.3	40.5	39.5	38.9	36.8	40.1	41.0	42.0	42.9	44.1	44.2	44.0	47.7
EU excluding euro area . . S052404Y	....	....	....	....	49.0	47.4	44.9	43.6	43.0	40.8	43.1	44.0	44.8	44.9	45.5	45.4	44.8	47.2
EU . . . . . S128446Y	....	....	....	....	50.3	50.0	48.3	47.3	46.8	44.8	46.2	46.6	47.2	46.8	46.8	46.3	45.7	46.8
EU excluding Italy . . . . . S924412Y	....	....	....	....	50.0	49.6	48.0	47.0	46.6	44.6	45.9	46.5	47.1	46.7	46.6	45.9	45.4	46.5
United States . . . . . S010606Y	....	....	....	....	....	....	....	....	....	....	....	....	....	....	....	....	....	....
Japan . . . . . S569476Y	....	....	....	....	....	....	....	....	....	....	....	....	....	....	....	....	....	....
Canada . . . . . S880406Y	....	....	....	....	....	....	....	....	....	....	....	....	....	....	....	....	....	....

**Table 14**  
**TUEE0250**

**Total expenditure, excluding interest payments (Regulation EC 1500/2000)**

(as a percentage of GDP)

	1991	1992	1993	1994	1995	1996	1997	1998	1999	2000	2001	2002	2003	2004	2005	2006	2007	2008
Italy . . . . . S258496Y	42.7	43.1	43.6	42.1	40.9	40.9	41.0	41.1	41.5	39.8	41.7	41.7	43.1	42.9	43.5	44.1	42.9	43.6
Traditional Italy account . . S299380Y	43.0	43.4	44.0	42.4	41.2	41.1	41.1	41.1	41.5	39.9	41.8	41.9	43.4	43.3	43.9	44.5	43.4	44.1
Belgium . . . . . S457990Y	....	....	....	....	43.2	43.9	43.4	43.0	43.3	42.5	42.7	44.1	45.9	44.7	47.9	44.5	44.5	46.1
Germany . . . . . S455922Y	....	....	....	....	44.8	45.8	45.0	44.7	44.9	42.0	44.5	45.2	45.5	44.3	44.1	42.5	41.4	41.1
Ireland . . . . . S036234Y	....	....	....	....	35.8	34.6	32.9	31.1	31.7	29.5	31.9	32.3	32.1	32.6	32.7	33.1	34.8	39.9
Greece . . . . . S051438Y	....	....	....	....	34.9	33.9	36.1	36.7	37.6	39.3	38.8	39.5	40.0	40.5	38.8	37.9	39.6	40.6
Spain . . . . . S234357Y	....	....	....	....	39.3	38.0	36.9	36.9	36.4	35.9	35.6	36.2	36.0	36.8	36.7	36.8	37.2	38.9
France . . . . . S579339Y	....	....	....	....	51.0	50.9	50.6	49.3	49.5	48.7	48.5	49.7	50.4	50.4	50.7	50.1	49.6	49.9
Cyprus . . . . . S055632Y	....	....	....	....	....	....	....	33.7	33.8	33.6	34.8	37.1	41.6	39.5	40.1	40.2	39.8	41.1
Luxembourg . . . . . S847812Y	....	....	....	....	39.3	40.7	40.2	40.6	38.9	37.3	37.8	41.3	41.6	42.3	41.4	38.4	37.0	40.4
Malta . . . . . S213689Y	....	....	....	....	37.6	40.3	40.2	39.8	39.3	37.4	39.7	39.6	44.4	41.8	40.9	40.2	39.3	42.0
Netherlands . . . . . S344076Y	....	....	....	....	45.9	44.1	42.6	42.0	41.7	40.5	42.2	43.4	44.5	43.6	42.4	43.4	43.1	43.3
Austria . . . . . S269701Y	....	....	....	....	52.2	51.9	49.9	50.2	50.2	48.5	48.1	47.6	48.4	51.0	46.9	46.6	45.8	46.1
Portugal . . . . . S770101Y	....	....	....	....	37.6	39.2	39.3	39.6	40.2	40.1	41.4	41.4	42.7	43.8	45.1	43.5	42.9	43.0
Slovenia . . . . . S396481Y	....	....	....	....	50.5	42.4	42.4	43.5	43.3	44.4	45.3	44.1	44.4	44.1	43.7	43.2	41.1	42.4
Slovakia . . . . . S585036Y	....	....	....	....	46.3	51.1	46.5	43.2	44.4	46.8	40.5	41.5	37.6	35.5	36.5	35.4	33.0	33.7
Finland . . . . . S407058Y	....	....	....	....	57.5	55.7	52.1	49.1	48.5	45.5	45.1	46.7	48.2	48.4	48.6	47.2	45.8	46.9
Euro area . . . . . S069181Y	....	....	....	....	45.1	45.2	44.5	43.9	44.1	42.4	43.5	44.1	44.8	44.4	44.3	43.7	43.1	43.7
Euro area excluding Italy . S087396Y	....	....	....	....	46.0	46.1	45.2	44.6	44.6	42.9	43.9	44.6	45.1	44.7	44.5	43.6	43.1	43.7
Bulgaria . . . . . S628476Y	....	....	....	....	....	....	....	....	38.0	38.5	36.9	38.0	38.3	37.9	37.6	35.1	40.4	36.6
Czech Republic . . . . . S268447Y	....	....	....	....	53.4	41.4	42.1	42.0	41.3	41.0	43.5	45.1	46.2	44.0	43.8	42.7	41.5	41.3
Denmark . . . . . S662366Y	....	....	....	....	53.3	53.1	51.6	51.7	51.3	49.9	50.8	51.4	52.2	52.0	50.8	49.9	49.4	50.3
Estonia . . . . . S853841Y	....	....	....	....	40.9	39.2	37.2	38.8	40.0	36.3	34.9	35.6	34.7	33.9	33.9	34.0	35.3	40.7
Latvia . . . . . S025152Y	....	....	....	....	37.6	35.6	35.4	39.4	41.1	36.4	33.7	34.9	34.1	35.0	35.0	37.7	35.5	38.6
Lithuania . . . . . S681118Y	....	....	....	....	35.4	36.6	49.5	39.3	38.7	37.3	35.3	33.4	31.9	32.4	32.5	32.8	34.2	36.6
Hungary . . . . . S806317Y	....	....	....	....	....	41.6	41.3	43.9	41.4	41.2	42.6	47.4	45.1	44.6	46.0	47.9	45.7	45.6
Poland . . . . . S558309Y	....	....	....	....	42.0	46.4	41.9	40.3	39.8	38.1	40.6	41.3	41.7	39.9	40.6	41.2	39.8	40.9
Romania . . . . . S974053Y	....	....	....	....	34.2	32.8	30.5	31.3	34.5	34.5	32.6	32.5	31.9	32.1	32.4	34.5	35.8	37.8
Sweden . . . . . S183826Y	....	....	....	....	59.8	57.6	55.7	54.3	54.6	52.1	52.7	53.7	54.7	53.7	53.3	52.4	50.8	51.5
United Kingdom . . . . . S777302Y	....	....	....	....	40.3	38.7	36.9	36.0	36.0	34.0	37.8	39.0	40.1	41.0	42.0	42.1	41.8	45.4
EU excluding euro area . . S099391Y	....	....	....	....	44.7	43.3	40.9	39.9	39.8	37.9	40.6	41.8	42.7	42.9	43.4	43.4	42.7	45.1
EU . . . . . S073003Y	....	....	....	....	45.0	44.8	43.6	43.0	43.0	41.2	42.7	43.5	44.2	44.0	44.1	43.6	43.0	44.0
EU excluding Italy . . . . . S848792Y	....	....	....	....	45.7	45.4	44.0	43.3	43.2	41.4	42.9	43.8	44.4	44.2	44.2	43.6	43.0	44.1
United States . . . . . S954253Y	....	....	....	....	....	....	....	....	....	....	....	....	....	....	....	....	....	....
Japan . . . . . S499519Y	....	....	....	....	....	....	....	....	....	....	....	....	....	....	....	....	....	....
Canada . . . . . S812801Y	....	....	....	....	....	....	....	....	....	....	....	....	....	....	....	....	....	....

**Table 15**  
**TUEE0260**

**Current expenditure (Regulation EC 1500/2000)**

(as a percentage of GDP)

	1991	1992	1993	1994	1995	1996	1997	1998	1999	2000	2001	2002	2003	2004	2005	2006	2007	2008
Italy . . . . . S379341Y	49.2	50.9	52.2	49.9	48.0	48.8	46.9	45.2	44.2	43.6	43.8	43.6	43.9	43.7	44.0	43.7	43.8	45.0
Traditional Italy account . . S071647Y	49.6	51.2	52.5	50.2	48.3	48.9	47.0	45.2	44.2	43.6	43.9	43.8	44.2	44.0	44.4	44.1	44.3	45.5
Belgium . . . . . S538586Y	....	....	....	....	49.1	49.5	47.9	47.4	46.9	45.9	46.7	47.3	48.0	46.8	46.7	45.8	45.5	47.1
Germany . . . . . S546671Y	....	....	....	....	44.7	46.1	45.4	44.9	44.9	44.4	44.2	44.9	45.3	44.2	44.0	42.7	41.2	41.0
Ireland . . . . . S131518Y	....	....	....	....	37.3	35.5	33.4	30.8	28.2	27.0	28.0	28.6	28.8	29.3	29.3	29.4	30.2	33.7
Greece . . . . . S128362Y	....	....	....	....	42.1	40.9	40.2	39.3	39.3	40.2	39.5	39.7	39.1	39.1	38.6	38.0	39.6	40.3
Spain . . . . . S302469Y	....	....	....	....	38.5	38.3	37.0	36.2	35.0	34.5	33.8	33.8	33.5	33.6	33.5	33.4	33.6	35.2
France . . . . . S681026Y	....	....	....	....	49.7	50.3	50.0	48.8	48.4	47.7	47.7	48.8	49.4	49.2	49.1	48.6	48.2	48.5
Cyprus . . . . . S161096Y	....	....	....	....	....	....	....	33.3	33.6	33.5	34.8	36.7	41.0	38.6	40.0	39.7	39.2	40.4
Luxembourg . . . . . S941695Y	....	....	....	....	34.5	35.1	36.4	35.5	34.0	32.7	34.3	35.4	35.9	36.6	35.6	33.3	32.6	35.5
Malta . . . . . S271215Y	....	....	....	....	36.1	38.1	38.3	38.0	37.7	36.3	38.8	38.7	39.8	40.9	39.7	39.2	38.7	41.9
Netherlands . . . . . S437075Y	....	....	....	....	47.7	46.1	44.3	43.5	42.6	41.2	41.3	42.0	42.9	42.5	41.3	42.3	41.7	41.6
Austria . . . . . S358530Y	....	....	....	....	51.5	51.1	49.6	49.7	49.7	48.6	47.9	47.4	48.2	47.2	46.5	46.1	45.3	45.6
Portugal . . . . . S856786Y	....	....	....	....	38.1	38.2	36.7	36.8	37.5	38.2	39.0	39.9	41.2	42.0	43.4	42.9	42.2	43.2
Slovenia . . . . . S476781Y	....	....	....	....	40.9	40.3	40.9	40.8	41.2	42.0	42.9	42.3	41.8	41.3	41.2	40.2	37.8	38.4
Slovakia . . . . . S665397Y	....	....	....	....	40.9	43.4	41.7	39.6	39.4	38.8	39.3	38.6	37.1	34.8	34.4	33.9	31.7	31.6
Finland . . . . . S473157Y	....	....	....	....	55.8	55.5	52.9	49.4	48.0	45.4	44.7	45.7	46.8	46.7	47.2	46.0	44.5	45.5
Euro area . . . . . S111124Y	....	....	....	....	46.3	46.9	45.8	44.8	44.2	43.5	43.4	43.8	44.1	43.6	43.4	42.8	42.2	42.9
Euro area excluding Italy . S131364Y	....	....	....	....	46.0	46.5	45.6	44.7	44.2	43.5	43.3	43.8	44.2	43.6	43.3	42.6	41.9	42.4
Bulgaria . . . . . S708893Y	....	....	....	....	49.6	50.0	38.2	44.8	37.6	38.6	36.4	36.7	36.9	35.9	35.0	32.2	33.4	31.7
Czech Republic . . . . . S352624Y	....	....	....	....	34.7	34.4	35.0	33.9	35.4	35.6	35.8	37.4	39.1	37.8	37.5	36.9	36.4	36.2
Denmark . . . . . S754352Y	....	....	....	....	56.8	56.4	54.2	53.9	53.1	51.3	51.9	52.3	52.9	52.1	50.5	49.2	48.8	49.1
Estonia . . . . . S933714Y	....	....	....	....	36.1	34.7	32.7	33.6	35.6	32.3	30.6	30.1	30.2	30.3	30.0	28.7	29.5	34.0
Latvia . . . . . S092282Y	....	....	....	....	35.9	33.7	34.3	36.5	37.5	33.6	31.2	32.1	32.0	31.6	30.6	31.1	29.1	33.8
Lithuania . . . . . S746466Y	....	....	....	....	31.0	32.4	35.0	36.7	36.6	34.2	32.4	30.7	29.7	29.3	29.6	29.1	28.8	31.8
Hungary . . . . . S916888Y	....	....	....	....	....	46.6	45.3	43.6	43.6	40.6	40.7	42.4	43.6	44.2	44.7	45.6	44.3	45.6
Poland . . . . . S662208Y	....	....	....	....	43.7	42.6	41.8	39.5	38.8	38.2	39.8	40.2	40.2	38.7	39.0	39.0	37.3	37.7
Romania . . . . . S054352Y	....	....	....	....	45.3	30.0	31.7	32.4	36.5	34.0	31.9	30.5	28.6	28.5	28.6	28.6	29.7	31.7
Sweden . . . . . S304653Y	....	....	....	....	60.8	59.4	57.2	56.6	55.1	52.7	52.5	53.2	53.6	52.3	51.7	50.8	49.3	49.7
United Kingdom . . . . . S856436Y	....	....	....	....	40.7	39.8	38.6	37.6	37.0	37.3	37.9	38.8	39.5	40.4	41.5	41.3	41.2	42.4
EU excluding euro area . . S141167Y	....	....	....	....	45.2	44.0	42.2	41.1	40.5	40.0	40.4	41.1	41.8	41.9	42.3	41.9	41.3	42.2
EU . . . . . S137138Y	....	....	....	....	46.1	46.3	44.9	43.9	43.3	42.6	42.6	43.1	43.6	43.2	43.1	42.6	42.0	42.7
EU excluding Italy . . . . . S947878Y	....	....	....	....	45.8	45.9	44.6	43.7	43.2	42.4	42.4	43.0	43.5	43.1	43.0	42.4	41.7	42.3
United States . . . . . S029739Y	32.3	32.4	31.8	30.8	30.8	30.3	29.3	28.5	28.0	27.9	28.7	29.5	29.9	29.7	29.9	29.9	30.4	....
Japan . . . . . S587947Y	....	....	....	....	....	27.1	27.1	28.2	29.6	29.8	30.4	31.2	31.2	30.7	30.7	30.6	30.8	....
Canada . . . . . S897447Y	45.6	46.8	46.0	43.6	42.3	40.7	38.5	38.6	36.7	35.3	36.1	35.3	35.3	34.0	33.2	33.2	32.8	....

**Table 16**  
**TUEE0270**

**Current expenditure, excluding interest payments (Regulation EC 1500/2000)**

(as a percentage of GDP)

	1991	1992	1993	1994	1995	1996	1997	1998	1999	2000	2001	2002	2003	2004	2005	2006	2007	2008
Italy . . . . . S266039Y	37.9	38.7	39.5	38.6	36.4	37.2	37.6	37.3	37.6	37.2	37.5	38.1	38.8	39.0	39.4	39.1	38.8	39.9
Traditional Italy account . . S282887Y	38.2	39.0	39.8	38.9	36.7	37.4	37.7	37.3	37.6	37.3	37.6	38.3	39.1	39.3	39.8	39.5	39.3	40.4
Belgium . . . . . S464541Y	....	....	....	....	40.2	41.1	40.2	40.0	40.1	39.3	40.2	41.6	42.7	42.1	42.5	41.9	41.6	43.4
Germany . . . . . S466222Y	....	....	....	....	41.2	42.6	42.0	41.6	41.8	41.3	41.2	42.0	42.4	41.4	41.2	39.9	38.4	38.3
Ireland . . . . . S041840Y	....	....	....	....	32.0	31.1	29.3	27.5	25.9	24.9	26.4	27.2	27.5	28.2	28.3	28.5	29.3	32.6
Greece . . . . . S059049Y	....	....	....	....	30.4	29.9	30.5	30.8	31.7	32.9	33.0	34.2	34.1	34.2	34.2	33.9	35.5	36.0
Spain . . . . . S242192Y	....	....	....	....	33.3	33.1	32.3	32.0	31.6	31.3	30.8	31.1	31.2	31.6	31.7	31.7	32.0	33.6
France . . . . . S588452Y	....	....	....	....	46.2	46.7	46.5	45.5	45.4	44.8	44.7	45.9	46.5	46.4	46.5	46.1	45.5	45.8
Cyprus . . . . . S065699Y	....	....	....	....	....	....	....	30.3	30.6	30.2	31.4	33.5	37.6	35.3	36.5	36.4	36.1	37.6
Luxembourg . . . . . S857529Y	....	....	....	....	34.1	34.7	36.0	35.1	33.6	32.4	34.0	35.1	35.7	36.4	35.5	33.1	32.3	35.2
Malta . . . . . S218427Y	....	....	....	....	34.0	35.9	35.6	34.7	34.0	32.7	35.4	35.1	36.4	37.3	36.0	35.7	35.4	38.6
Netherlands . . . . . S350266Y	....	....	....	....	42.1	40.8	39.4	38.8	38.4	37.6	38.1	39.2	40.3	40.1	38.9	40.1	39.5	39.4
Austria . . . . . S277603Y	....	....	....	....	47.5	47.3	45.9	46.1	46.4	45.2	44.6	44.2	45.2	44.4	43.7	43.3	42.6	43.0
Portugal . . . . . S779254Y	....	....	....	....	32.3	33.2	32.9	33.6	34.5	35.2	36.0	37.1	38.5	39.3	40.8	40.1	39.4	40.3
Slovenia . . . . . S403015Y	....	....	....	....	38.7	38.2	38.5	38.6	39.0	39.6	40.5	40.1	39.8	39.6	39.7	38.8	36.5	37.3
Slovakia . . . . . S593020Y	....	....	....	....	38.5	40.9	39.3	37.1	36.0	34.7	35.3	35.0	34.6	32.6	32.7	32.5	30.3	30.4
Finland . . . . . S412405Y	....	....	....	....	51.9	51.4	48.7	45.9	45.0	42.6	42.1	43.6	45.1	45.2	45.7	44.6	43.0	44.1
Euro area . . . . . S154622Y	....	....	....	....	40.8	41.4	40.8	40.2	40.2	39.6	39.6	40.3	40.9	40.5	40.5	39.9	39.3	39.9
Euro area excluding Italy . S161815Y	....	....	....	....	41.7	42.2	41.5	40.9	40.8	40.1	40.0	40.8	41.3	40.9	40.7	40.1	39.4	39.9
Bulgaria . . . . . S635472Y	....	....	....	....	35.5	28.9	29.9	40.6	33.8	34.5	33.1	34.4	34.9	34.1	33.3	30.8	32.3	30.9
Czech Republic . . . . . S275898Y	....	....	....	....	33.7	33.2	33.9	32.8	34.3	34.7	34.8	36.2	37.9	36.7	36.4	35.8	35.2	35.1
Denmark . . . . . S671559Y	....	....	....	....	50.9	50.7	49.2	49.4	49.1	47.7	48.6	49.3	50.2	49.8	48.7	47.6	47.3	47.6
Estonia . . . . . S860292Y	....	....	....	....	35.6	34.3	32.4	33.1	35.3	32.0	30.4	29.9	30.0	30.0	29.8	28.6	29.3	33.8
Latvia . . . . . S030521Y	....	....	....	....	35.0	32.3	33.4	35.7	36.8	32.6	30.3	31.4	31.3	30.8	30.0	30.6	28.6	32.9
Lithuania . . . . . S690080Y	....	....	....	....	30.6	31.5	34.3	35.6	35.1	32.5	30.9	29.4	28.4	28.4	28.8	28.3	28.1	31.2
Hungary . . . . . S817216Y	....	....	....	....	....	37.0	35.7	36.0	36.4	35.3	36.1	38.4	39.6	39.8	40.6	41.7	40.3	41.4
Poland . . . . . S567797Y	....	....	....	....	38.0	38.0	37.3	35.5	35.9	35.1	36.6	37.3	37.2	36.0	36.2	36.4	35.0	35.5
Romania . . . . . S981942Y	....	....	....	....	29.6	28.1	27.2	28.5	31.4	30.1	28.5	28.0	27.0	27.0	27.5	27.8	28.9	31.0
Sweden . . . . . S195833Y	....	....	....	....	55.4	54.2	52.1	51.9	51.2	49.3	49.7	50.4	51.6	50.7	50.1	49.2	47.5	48.1
United Kingdom . . . . . S785277Y	....	....	....	....	37.1	36.2	35.1	34.2	34.2	34.6	35.6	36.8	37.6	38.4	39.4	39.3	39.0	40.1
EU excluding euro area . . S170015Y	....	....	....	....	40.8	39.9	38.2	37.4	37.4	37.1	37.8	38.9	39.7	39.9	40.3	39.9	39.3	40.1
EU . . . . . S080460Y	....	....	....	....	40.8	41.0	40.2	39.5	39.5	39.0	39.1	40.0	40.6	40.4	40.4	39.9	39.3	39.9
EU excluding Italy . . . . . S858617Y	....	....	....	....	41.5	41.6	40.6	39.9	39.8	39.2	39.4	40.2	40.8	40.6	40.6	40.1	39.4	39.9
United States . . . . . S922310Y	27.3	27.6	27.2	26.4	26.1	25.7	24.9	24.4	24.3	24.3	25.4	26.6	27.2	27.1	27.2	27.1	27.6	....
Japan . . . . . S002159Y	....	....	....	....	....	23.6	23.7	24.7	26.1	26.5	27.3	28.2	28.4	28.2	28.3	28.1	28.4	....
Canada . . . . . S326823Y	36.2	37.5	36.8	34.6	32.8	31.6	30.1	30.4	29.1	28.2	29.5	29.5	29.9	29.0	28.6	28.8	28.7	....

**Table 17**  
**TUEE0280**

**Interest payments**

(as a percentage of GDP)

	1991	1992	1993	1994	1995	1996	1997	1998	1999	2000	2001	2002	2003	2004	2005	2006	2007	2008
Italy . . . . . S221647Y	11.3	12.2	12.7	11.4	11.6	11.5	9.3	7.9	6.6	6.3	6.3	5.5	5.1	4.7	4.6	4.6	5.0	5.1
Belgium . . . . . S424578Y	10.0	10.6	10.6	9.9	8.9	8.4	7.7	7.3	6.8	6.6	6.5	5.7	5.3	4.7	4.2	3.9	3.8	3.7
Germany . . . . . S421703Y	2.6	3.2	3.2	3.3	3.5	3.5	3.4	3.4	3.1	3.2	3.1	2.9	3.0	2.8	2.8	2.8	2.8	2.8
Ireland . . . . . S008536Y	7.2	6.7	6.3	5.6	5.3	4.5	4.1	3.3	2.3	2.0	1.5	1.4	1.3	1.1	1.0	0.9	1.0	1.1
Greece . . . . . S021613Y	9.3	11.5	12.6	13.9	11.6	10.9	9.7	8.5	7.6	7.3	6.5	5.5	4.9	4.9	4.4	4.1	4.1	4.4
Spain . . . . . S200044Y	3.7	4.3	5.0	4.7	5.1	5.2	4.7	4.2	3.5	3.2	3.0	2.7	2.3	2.0	1.8	1.6	1.6	1.6
France . . . . . S541905Y	2.9	3.2	3.3	3.5	3.5	3.6	3.5	3.3	3.0	2.9	3.0	2.9	2.8	2.7	2.6	2.5	2.7	2.8
Cyprus . . . . . S975951Y	....	....	....	....	....	....	....	3.1	3.0	3.4	3.4	3.2	3.4	3.3	3.5	3.3	3.1	2.9
Luxembourg . . . . . S817353Y	0.4	0.3	0.3	0.3	0.4	0.4	0.4	0.4	0.3	0.3	0.3	0.3	0.2	0.2	0.2	0.2	0.2	0.3
Malta . . . . . S189908Y	....	....	....	....	2.0	2.2	2.7	3.2	3.7	3.6	3.4	3.6	3.4	3.6	3.7	3.5	3.3	3.3
Netherlands . . . . . S322697Y	5.9	6.0	6.0	5.7	5.6	5.3	4.9	4.7	4.3	3.7	3.2	2.8	2.6	2.5	2.3	2.2	2.2	2.2
Austria . . . . . S236619Y	4.1	4.1	4.2	3.9	4.0	3.9	3.6	3.6	3.4	3.5	3.4	3.1	3.0	2.9	2.9	2.7	2.7	2.5
Portugal . . . . . S740310Y	7.6	7.0	6.0	6.1	5.8	5.0	3.9	3.2	3.0	3.0	3.0	2.8	2.7	2.6	2.6	2.7	2.8	2.9
Slovenia . . . . . S368845Y	....	....	....	....	2.1	2.1	2.4	2.2	2.2	2.4	2.4	2.2	2.0	1.7	1.6	1.4	1.3	1.2
Slovakia . . . . . S551845Y	....	....	....	....	2.4	2.5	2.4	2.5	3.4	4.1	4.0	3.6	2.5	2.2	1.7	1.5	1.4	1.2
Finland . . . . . S375805Y	1.9	2.6	4.5	5.0	3.9	4.2	4.2	3.5	3.0	2.8	2.6	2.1	1.7	1.6	1.5	1.4	1.5	1.4
Euro area . . . . . S183087Y	4.7	5.3	5.5	5.4	5.5	5.5	4.9	4.5	4.0	3.9	3.8	3.5	3.3	3.1	2.9	2.9	2.9	3.0
Euro area excluding Italy . . S193509Y	3.6	4.1	4.2	4.3	4.3	4.2	4.0	3.8	3.5	3.4	3.3	3.0	2.9	2.7	2.6	2.5	2.5	2.5
Bulgaria . . . . . S602404Y	....	....	....	....	14.1	21.1	8.3	4.3	3.8	4.0	3.3	2.3	2.0	1.8	1.7	1.4	1.0	0.8
Czech Republic . . . . . S237267Y	....	....	....	....	1.0	1.2	1.1	1.2	1.0	0.8	1.0	1.2	1.2	1.2	1.2	1.1	1.2	1.1
Denmark . . . . . S621830Y	7.3	6.6	7.3	6.7	5.9	5.7	5.0	4.5	4.0	3.6	3.3	3.0	2.6	2.3	1.8	1.6	1.5	1.4
Estonia . . . . . S819098Y	....	....	....	....	0.5	0.4	0.3	0.5	0.3	0.2	0.1	0.2	0.2	0.2	0.2	0.2	0.2	0.2
Latvia . . . . . S000226Y	....	....	....	....	0.9	1.4	0.9	0.7	0.7	1.0	0.9	0.7	0.7	0.7	0.6	0.5	0.5	0.9
Lithuania . . . . . S645520Y	....	....	....	....	0.4	0.9	0.7	1.1	1.5	1.7	1.5	1.3	1.2	0.9	0.8	0.7	0.7	0.6
Hungary . . . . . S772719Y	....	....	....	....	....	9.6	9.6	7.6	7.2	5.3	4.6	4.0	4.1	4.4	4.1	3.9	4.1	4.3
Poland . . . . . S516559Y	....	....	....	....	5.7	4.6	4.5	4.0	3.0	3.0	3.1	2.9	3.0	2.8	2.8	2.7	2.3	2.2
Romania . . . . . S934532Y	....	....	....	....	15.6	1.9	4.5	3.9	5.1	3.9	3.4	2.5	1.6	1.4	1.1	0.8	0.8	0.8
Sweden . . . . . S136421Y	4.9	5.1	5.8	6.4	5.4	5.3	5.1	4.7	3.9	3.5	2.8	2.8	2.0	1.6	1.6	1.6	1.8	1.7
United Kingdom . . . . . S735484Y	2.7	2.7	2.8	3.2	3.6	3.6	3.6	3.5	2.8	2.7	2.3	2.0	2.0	1.9	2.1	2.0	2.2	2.3
EU excluding euro area . . S215008Y	....	....	....	....	4.4	4.2	4.0	3.7	3.1	2.9	2.5	2.2	2.1	2.0	2.1	2.0	2.0	2.1
EU . . . . . S032985Y	4.5	4.9	5.2	5.1	5.3	5.2	4.7	4.3	3.8	3.6	3.5	3.1	3.0	2.8	2.7	2.6	2.7	2.7
EU excluding Italy . . . . . S816923Y	3.6	3.9	4.1	4.2	4.3	4.2	4.0	3.8	3.4	3.2	3.0	2.8	2.7	2.5	2.4	2.3	2.4	2.4
United States . . . . . S919104Y	5.0	4.8	4.5	4.4	4.6	4.5	4.3	4.1	3.7	3.6	3.3	2.9	2.6	2.5	2.7	2.8	2.9	....
Japan . . . . . S460408Y	....	....	....	....	....	3.5	3.4	3.5	3.5	3.3	3.2	3.0	2.7	2.5	2.4	2.4	2.5	....
Canada . . . . . S772263Y	9.4	9.3	9.2	9.0	9.6	9.1	8.4	8.3	7.6	7.1	6.6	5.8	5.4	4.9	4.6	4.4	4.1	....

**Table 18**  
**TUEE0290**

**Final consumption expenditure**  
*(as a percentage of GDP)*

	1991	1992	1993	1994	1995	1996	1997	1998	1999	2000	2001	2002	2003	2004	2005	2006	2007	2008
Italy . . . . . S141280Y	20.2	20.1	20.0	19.3	18.0	18.3	18.3	18.1	18.2	18.4	19.0	19.2	19.7	19.9	20.3	20.1	19.7	20.2
Belgium . . . . . S365580Y	14.3	14.2	14.6	14.5	21.5	22.0	21.5	21.3	21.5	21.3	21.8	22.5	23.0	22.8	22.9	22.4	22.2	23.1
Germany . . . . . S368838Y	18.9	19.5	19.6	19.4	19.6	19.8	19.4	19.1	19.2	19.0	18.9	19.2	19.3	18.8	18.7	18.3	18.0	18.1
Ireland . . . . . S930956Y	15.1	15.4	15.3	15.2	16.3	15.6	15.0	14.2	13.8	13.8	14.6	15.0	15.1	15.4	15.4	15.5	16.0	17.4
Greece . . . . . S941448Y	14.2	13.7	14.3	13.8	14.0	13.3	13.9	14.0	14.9	17.8	17.4	18.3	17.2	17.1	16.7	16.1	16.7	16.5
Spain . . . . . S135861Y	15.6	16.4	16.8	16.2	18.1	18.0	17.5	17.3	17.2	17.2	17.1	17.2	17.4	17.8	18.0	18.1	18.3	19.1
France . . . . . S480230Y	17.9	18.5	19.4	19.2	23.7	23.9	23.9	23.1	23.2	22.9	22.8	23.4	23.7	23.7	23.7	23.4	23.1	23.0
Cyprus . . . . . S905902Y	....	....	....	....	....	....	....	16.6	17.4	16.1	17.2	18.2	19.7	17.8	18.0	18.6	17.7	18.1
Luxembourg . . . . . S752471Y	12.1	12.3	12.0	11.9	15.9	16.4	16.7	15.8	15.5	15.1	16.1	16.5	16.4	16.9	16.5	15.4	15.3	16.4
Malta . . . . . S141740Y	....	....	....	....	18.6	20.0	19.4	19.4	18.8	18.5	20.1	20.0	20.6	20.7	19.7	19.9	19.1	20.8
Netherlands . . . . . S278856Y	13.9	14.1	14.3	13.9	23.8	22.8	22.3	22.2	22.2	22.0	22.6	23.7	24.5	24.2	23.7	25.1	25.1	25.1
Austria . . . . . S782924Y	18.2	18.6	19.5	19.6	20.5	20.4	19.4	19.4	19.7	19.1	18.9	18.6	18.9	18.6	18.5	18.4	18.3	18.6
Portugal . . . . . S673041Y	16.7	16.7	17.4	17.1	17.9	18.2	18.1	18.3	18.6	19.3	19.7	20.0	20.3	20.6	21.4	20.7	20.3	20.7
Slovenia . . . . . S318987Y	....	....	....	....	18.6	18.4	18.2	18.2	18.2	18.8	19.4	19.2	19.1	19.0	19.1	18.8	17.7	17.9
Slovakia . . . . . S488075Y	....	....	....	....	21.7	23.9	21.8	22.2	20.1	20.1	20.7	20.5	20.6	19.2	18.5	19.1	17.5	16.4
Finland . . . . . S310439Y	23.8	24.3	22.7	21.8	22.8	23.2	22.3	21.5	21.2	20.3	20.4	21.1	21.8	22.0	22.3	21.9	21.4	22.1
Euro area . . . . . S223082Y	17.7	18.1	18.4	18.1	20.3	20.4	20.1	19.8	19.8	19.8	19.9	20.2	20.5	20.4	20.4	20.3	20.0	20.3
Euro area excluding Italy . . . . . S232948Y	17.7	18.2	18.6	18.3	20.8	20.9	20.5	20.1	20.2	20.0	20.0	20.5	20.6	20.5	20.4	20.3	20.1	20.3
Bulgaria . . . . . S549034Y	....	....	....	....	15.3	11.9	12.6	15.3	16.5	17.9	17.4	18.1	19.0	18.4	18.0	16.6	16.2	16.3
Czech Republic . . . . . S173803Y	....	....	....	....	20.9	20.2	20.9	20.0	21.2	21.1	21.1	22.3	23.4	22.1	22.1	21.3	20.3	20.3
Denmark . . . . . S559612Y	25.7	25.8	26.8	25.9	25.2	25.4	25.0	25.6	25.7	25.1	25.7	26.2	26.5	26.5	26.0	25.9	26.0	26.5
Estonia . . . . . S762208Y	....	....	....	....	25.6	23.2	21.0	20.8	22.1	19.9	19.0	18.5	18.4	17.7	17.3	16.5	17.2	19.5
Latvia . . . . . S948477Y	....	....	....	....	22.7	21.2	20.6	23.2	22.7	20.8	20.5	21.0	21.4	19.5	17.4	16.6	17.4	20.0
Lithuania . . . . . S593931Y	....	....	....	....	21.7	22.1	22.6	24.4	22.3	22.8	21.4	20.9	19.9	19.4	18.7	19.3	18.2	19.1
Hungary . . . . . S690269Y	....	....	....	....	22.9	21.6	21.9	21.2	21.2	20.9	21.2	22.2	23.2	22.4	22.5	22.8	21.2	21.5
Poland . . . . . S444781Y	....	....	....	....	18.7	18.3	17.8	17.3	17.4	17.4	17.9	17.9	18.1	17.6	18.1	18.3	18.0	18.5
Romania . . . . . S865261Y	....	....	....	....	13.9	13.2	13.7	12.6	17.6	17.5	16.2	15.1	19.3	16.3	17.4	16.7	16.0	17.3
Sweden . . . . . S062418Y	25.7	26.3	26.3	25.3	26.6	27.3	26.7	27.0	26.9	26.0	26.4	27.2	27.5	26.8	26.4	26.3	25.9	26.4
United Kingdom . . . . . S675113Y	21.2	21.6	21.5	21.2	19.3	19.0	18.2	17.9	18.1	18.5	19.0	19.7	20.4	20.9	21.4	21.6	21.0	21.7
EU excluding euro area . . . . . S240557Y	....	....	....	....	20.9	20.7	19.9	19.5	19.8	19.8	20.2	20.8	21.6	21.6	21.8	21.8	21.2	21.8
EU . . . . . S958161Y	18.7	19.1	19.2	18.9	20.4	20.5	20.1	19.7	19.8	19.8	19.9	20.4	20.8	20.7	20.8	20.7	20.3	20.7
EU excluding Italy . . . . . S745246Y	18.8	19.3	19.5	19.2	20.8	20.8	20.3	20.0	20.1	20.0	20.1	20.6	20.9	20.8	20.9	20.7	20.4	20.8
United States . . . . . S862555Y	17.1	16.6	16.1	15.5	15.2	14.8	14.4	14.2	14.2	14.3	14.7	15.4	15.8	15.8	15.8	15.8	16.1	....
Japan . . . . . S388953Y	....	....	....	....	....	15.3	15.3	15.9	16.5	16.9	17.5	18.0	18.1	17.9	18.1	17.8	17.9	....
Canada . . . . . S721056Y	23.7	24.1	23.5	22.3	21.3	20.4	19.5	19.6	18.9	18.6	19.1	19.5	19.6	19.2	19.0	19.2	19.3	....



**Table 19**  
**TUEE0300**

**Compensation of employees**

(as a percentage of GDP)

	1991	1992	1993	1994	1995	1996	1997	1998	1999	2000	2001	2002	2003	2004	2005	2006	2007	2008
Italy . . . . . S293025Y	12.3	12.1	12.0	11.6	11.0	11.3	11.5	10.6	10.6	10.4	10.5	10.6	10.8	10.8	11.0	11.0	10.6	10.9
Belgium . . . . . S486636Y	11.5	11.6	12.0	12.0	11.9	11.9	11.8	11.7	11.8	11.5	11.7	12.2	12.3	12.0	12.1	11.9	11.7	12.0
Germany . . . . . S494735Y	10.1	10.4	10.6	10.3	8.7	8.7	8.5	8.3	8.2	8.1	7.9	7.9	7.8	7.7	7.5	7.2	6.9	6.9
Ireland . . . . . S067336Y	10.5	10.6	10.8	10.4	10.1	9.6	9.1	8.4	8.1	8.0	8.3	8.7	9.0	9.2	9.2	9.3	9.4	10.3
Greece . . . . . S081201Y	11.5	10.9	10.9	10.6	10.3	9.8	10.6	10.6	10.7	10.5	10.4	11.1	10.8	11.4	11.3	10.9	11.0	11.2
Spain . . . . . S261881Y	11.1	11.8	11.8	11.3	11.2	11.2	10.8	10.6	10.5	10.3	10.1	10.0	10.1	10.1	10.0	10.0	10.2	10.7
France . . . . . S621182Y	13.1	13.4	14.0	14.0	13.6	13.8	13.6	13.5	13.5	13.3	13.3	13.5	13.5	13.3	13.2	13.0	12.8	12.7
Cyprus . . . . . S097108Y	....	....	....	....	....	....	....	13.5	13.5	13.5	13.2	13.8	15.5	14.8	14.7	14.7	14.5	14.3
Luxembourg . . . . . S893220Y	....	....	....	....	8.5	8.5	8.8	8.5	7.8	7.5	7.9	8.1	8.0	8.1	7.9	7.4	7.3	7.9
Malta . . . . . S235098Y	....	....	....	....	14.6	15.2	14.4	14.4	13.8	13.0	14.9	14.5	14.7	14.6	13.9	13.3	13.0	13.9
Netherlands . . . . . S376898Y	9.2	9.4	9.6	9.3	10.6	10.1	9.8	9.7	9.7	9.5	9.6	9.8	10.1	10.0	9.6	9.3	9.2	9.2
Austria . . . . . S299152Y	11.6	11.8	12.2	12.2	12.6	12.3	11.5	11.4	11.4	11.0	9.9	9.6	9.7	9.4	9.4	9.3	9.1	9.1
Portugal . . . . . S803684Y	12.8	13.8	14.2	13.7	12.9	13.1	13.1	13.4	13.7	14.2	14.3	14.7	14.1	14.1	14.4	13.6	12.9	12.9
Slovenia . . . . . S423117Y	....	....	....	....	11.4	11.3	11.2	11.0	11.0	11.3	11.8	11.6	11.7	11.6	11.5	11.2	10.6	10.8
Slovakia . . . . . S619457Y	....	....	....	....	9.5	9.5	9.3	9.5	9.4	8.8	8.9	9.1	8.9	8.0	7.3	7.4	6.8	6.6
Finland . . . . . S429868Y	16.8	17.3	16.1	15.2	15.2	15.4	14.5	13.8	13.5	13.0	12.9	13.2	13.6	13.6	13.8	13.4	13.0	13.2
Euro area . . . . . S247547Y	11.6	11.8	12.0	11.7	11.0	11.0	10.9	10.6	10.5	10.4	10.3	10.4	10.5	10.4	10.4	10.2	10.0	10.1
Euro area excluding Italy . . S254863Y	11.3	11.6	11.9	11.6	10.9	10.9	10.7	10.6	10.5	10.4	10.3	10.4	10.4	10.3	10.2	10.0	9.8	9.9
Bulgaria . . . . . S659856Y	....	....	....	....	9.3	7.0	6.8	9.7	10.5	10.0	8.9	9.6	10.4	10.2	9.8	9.0	9.0	9.0
Czech Republic . . . . . S305423Y	....	....	....	....	7.3	7.5	7.4	6.8	7.3	7.1	7.4	7.8	8.3	7.9	8.0	7.8	7.6	7.6
Denmark . . . . . S695429Y	17.7	17.8	18.1	17.5	17.2	17.2	17.0	17.4	17.5	17.1	17.4	17.8	18.0	17.8	17.3	17.1	16.9	17.1
Estonia . . . . . S881532Y	....	....	....	....	11.9	11.3	10.6	10.5	11.8	10.9	10.3	10.3	10.2	10.2	10.0	9.5	10.0	11.5
Latvia . . . . . S050909Y	....	....	....	....	11.2	10.9	10.5	10.8	11.3	10.8	10.2	10.5	10.7	10.5	10.0	10.0	10.6	12.0
Lithuania . . . . . S707412Y	....	....	....	....	10.0	10.7	11.2	12.7	13.4	12.1	11.7	11.4	10.8	10.8	10.3	10.4	10.0	10.8
Hungary . . . . . S850423Y	....	....	....	....	11.9	10.6	10.6	10.6	10.6	10.5	11.1	12.2	13.2	12.6	12.6	12.1	11.5	11.6
Poland . . . . . S598321Y	....	....	....	....	10.7	10.5	10.5	10.0	10.1	10.1	10.7	10.8	10.7	10.1	10.0	9.8	9.6	9.8
Romania . . . . . S008913Y	....	....	....	....	7.0	6.7	5.4	5.8	8.2	7.9	8.3	8.5	8.2	8.1	8.7	9.1	9.4	10.2
Sweden . . . . . S226538Y	17.9	18.3	18.0	17.1	16.4	16.8	16.4	15.9	15.5	15.3	15.6	15.8	16.1	15.9	15.7	15.3	15.1	14.9
United Kingdom . . . . . S810320Y	11.7	11.8	10.7	9.1	10.6	10.5	10.0	9.7	9.6	9.7	10.1	10.3	10.7	11.0	11.2	11.1	11.0	11.1
EU excluding euro area . . S265540Y	....	....	....	....	11.9	11.8	11.3	10.9	10.9	10.8	11.1	11.4	11.7	11.8	11.8	11.6	11.4	11.6
EU . . . . . S107285Y	11.9	12.1	12.1	11.6	11.1	11.2	11.0	10.7	10.6	10.5	10.5	10.7	10.8	10.8	10.7	10.6	10.4	10.5
EU excluding Italy . . . . . S889242Y	11.8	12.0	12.0	11.5	11.2	11.2	10.9	10.7	10.6	10.5	10.5	10.7	10.8	10.8	10.7	10.5	10.3	10.4
United States . . . . . S974123Y	11.2	11.0	10.9	10.6	10.4	10.1	9.8	9.7	9.6	9.5	9.8	10.2	10.4	10.3	10.2	10.0	10.1	....
Japan . . . . . S517470Y	....	....	....	....	....	6.3	6.2	6.5	6.6	6.5	6.6	6.7	6.6	6.4	6.3	6.2	6.1	....
Canada . . . . . S832361Y	15.1	15.6	15.2	14.3	13.7	13.0	12.3	12.0	11.6	11.3	11.4	11.7	11.8	11.5	11.4	11.5	11.4	....

**Table 20**  
**TUEE0330**

**Social benefits other than social transfers in kind**

(as a percentage of GDP)

	1991	1992	1993	1994	1995	1996	1997	1998	1999	2000	2001	2002	2003	2004	2005	2006	2007	2008
Italy . . . . . S285077Y	15.1	16.1	16.6	16.8	16.3	16.5	17.0	16.7	16.9	16.4	16.2	16.5	16.8	16.9	17.0	17.0	17.1	17.7
Belgium . . . . . S481322Y	24.0	24.4	24.6	24.0	16.2	16.3	16.1	15.9	15.6	15.2	15.4	15.8	16.1	15.9	15.7	15.4	15.4	15.9
Germany . . . . . S487168Y	16.6	17.3	18.4	18.6	17.6	18.8	18.8	18.6	18.6	18.4	18.6	19.5	19.8	19.4	19.2	18.4	17.3	16.9
Ireland . . . . . S058389Y	14.1	14.6	14.5	14.4	11.7	11.2	10.4	9.6	8.5	7.8	8.3	8.8	8.8	9.2	9.2	9.5	9.8	11.5
Greece . . . . . S074303Y	14.9	14.8	15.1	15.2	13.8	14.0	14.2	14.4	14.4	14.8	15.4	15.4	15.9	15.5	16.1	16.5	17.3	18.4
Spain . . . . . S254662Y	14.7	15.5	16.2	15.8	13.6	13.5	13.0	12.5	12.1	12.0	11.7	11.8	11.7	11.7	11.6	11.5	11.6	12.3
France . . . . . S607223Y	21.4	22.0	23.1	22.9	17.9	18.0	18.1	17.7	17.6	17.1	17.1	17.3	17.5	17.6	17.7	17.6	17.4	17.6
Cyprus . . . . . S086510Y	....	....	....	....	....	....	....	8.7	8.9	9.0	9.2	10.2	11.3	12.0	12.7	12.2	11.6	12.5
Luxembourg . . . . . S877200Y	....	....	....	....	14.3	14.2	14.5	14.3	13.5	13.1	13.9	14.5	15.0	14.7	14.5	13.5	13.1	14.4
Malta . . . . . S230525Y	....	....	....	....	11.3	12.4	12.5	12.6	12.7	11.9	12.5	12.6	12.7	12.8	12.8	12.4	12.6	13.5
Netherlands . . . . . S367251Y	26.2	26.8	27.0	26.0	15.2	14.6	13.5	12.7	12.1	11.3	11.1	11.2	11.5	11.4	10.9	10.8	10.4	10.3
Austria . . . . . S290726Y	19.3	19.5	21.0	21.2	19.7	19.7	19.3	19.0	19.1	18.9	19.0	19.2	19.5	19.2	18.8	18.4	18.0	18.1
Portugal . . . . . S796822Y	12.5	13.4	15.0	14.8	11.2	11.3	11.1	11.3	11.3	11.7	12.0	12.6	13.8	14.3	14.9	15.1	15.1	15.6
Slovenia . . . . . S417107Y	....	....	....	....	15.6	15.5	15.8	15.9	15.8	16.0	16.0	15.9	15.9	15.9	15.7	15.3	14.4	14.7
Slovakia . . . . . S611616Y	....	....	....	....	14.2	14.2	13.7	13.6	14.3	13.6	13.6	13.7	11.9	12.2	12.4	11.9	11.6	11.3
Finland . . . . . S424417Y	19.3	23.2	24.6	24.5	21.9	21.3	19.7	18.2	17.7	16.2	15.9	16.3	16.8	16.6	16.6	15.9	15.1	15.2
Euro area . . . . . S274092Y	18.8	19.5	20.4	20.2	16.8	17.2	17.1	16.7	16.6	16.2	16.1	16.5	16.7	16.6	16.5	16.2	15.8	16.0
Euro area excluding Italy . . . . . S304509Y	18.9	19.5	20.5	20.3	16.9	17.4	17.2	16.7	16.5	16.1	16.1	16.5	16.7	16.5	16.4	16.0	15.5	15.7
Bulgaria . . . . . S653194Y	....	....	....	....	10.6	8.8	8.7	10.7	10.8	12.7	12.0	12.7	12.7	12.0	11.9	11.4	10.9	10.5
Czech Republic . . . . . S298929Y	....	....	....	....	10.7	10.9	11.5	11.3	11.7	12.1	11.9	12.4	12.2	12.9	12.6	12.7	12.9	12.7
Denmark . . . . . S688004Y	18.7	19.2	20.3	21.7	19.5	18.9	17.9	17.4	16.8	16.2	16.3	16.4	17.1	16.9	16.3	15.4	15.0	14.9
Estonia . . . . . S874720Y	....	....	....	....	9.5	9.9	9.5	9.7	10.6	9.6	9.1	8.9	8.9	9.2	9.1	8.9	9.0	10.8
Latvia . . . . . S043578Y	....	....	....	....	12.7	12.9	12.5	13.4	14.9	12.4	11.2	10.1	9.4	9.2	8.4	8.1	7.1	8.3
Lithuania . . . . . S701652Y	....	....	....	....	8.4	8.8	9.2	9.9	11.3	10.7	10.5	9.3	9.1	9.0	8.6	8.5	9.2	11.0
Hungary . . . . . S841405Y	....	....	....	....	15.4	13.5	12.5	13.1	13.0	12.4	12.5	13.3	13.8	13.9	14.6	14.9	15.2	15.9
Poland . . . . . S589199Y	....	....	....	....	17.0	17.1	17.1	16.3	16.8	16.0	16.9	17.0	16.9	16.0	15.7	15.2	14.2	14.1
Romania . . . . . S999507Y	....	....	....	....	9.4	9.1	9.5	10.4	10.5	9.7	9.7	9.3	8.4	8.7	8.9	8.8	9.3	10.6
Sweden . . . . . S215670Y	20.1	22.2	23.6	23.3	20.1	19.3	18.5	18.3	17.8	17.1	16.9	17.0	17.7	17.5	17.0	16.3	15.3	15.1
United Kingdom . . . . . S802598Y	11.8	13.1	13.8	13.6	15.0	14.5	14.1	13.4	12.8	12.6	12.9	12.8	12.8	12.9	12.9	12.6	12.7	13.2
EU excluding euro area . . . . . S319584Y	....	....	....	....	16.0	15.5	14.9	14.3	13.9	13.5	13.8	13.7	13.8	13.8	13.6	13.3	13.1	13.5
EU . . . . . S102887Y	17.8	18.7	19.5	19.4	16.7	16.8	16.6	16.1	15.9	15.5	15.5	15.8	16.0	15.9	15.7	15.4	15.1	15.4
EU excluding Italy . . . . . S881151Y	17.7	18.5	19.5	19.4	16.7	16.9	16.5	16.1	15.8	15.3	15.4	15.7	15.9	15.7	15.5	15.2	14.8	15.0
United States . . . . . S926645Y	10.8	11.6	11.7	11.5	11.6	11.6	11.3	10.9	10.7	10.6	11.3	11.9	12.0	12.0	11.9	12.0	12.2	....
Japan . . . . . S014742Y	....	....	....	....	....	8.7	8.8	9.5	10.0	10.1	10.5	11.1	11.2	11.2	11.3	11.4	11.6	....
Canada . . . . . S338041Y	12.2	13.3	13.5	12.8	12.2	11.8	11.4	11.4	10.8	10.3	10.6	10.5	10.3	10.1	9.9	10.0	9.9	....

**Table 21**  
**TUEE0400**

**Capital expenditure**  
*(as a percentage of GDP)*

	1991	1992	1993	1994	1995	1996	1997	1998	1999	2000	2001	2002	2003	2004	2005	2006	2007	2008
Italy . . . . . S368005Y	4.8	4.4	4.1	3.6	4.5	3.7	3.4	3.8	3.9	2.6	4.2	3.6	4.3	4.0	4.1	5.0	4.1	3.8
Belgium . . . . . S526786Y	....	....	....	....	3.0	2.9	3.2	3.0	3.3	3.2	2.5	2.6	3.2	2.6	5.4	2.6	2.8	2.8
Germany . . . . . S538427Y	....	....	....	....	3.6	3.2	3.0	3.1	3.1	0.7	3.3	3.2	3.2	2.9	2.9	2.7	3.0	2.9
Ireland . . . . . S119278Y	....	....	....	....	3.9	3.6	3.6	3.6	5.9	4.5	5.4	5.1	4.6	4.4	4.4	4.6	5.5	7.3
Greece . . . . . S121110Y	....	....	....	....	4.5	4.0	5.6	5.9	5.9	6.4	5.8	5.4	5.9	6.4	4.6	4.0	4.1	4.6
Spain . . . . . S295998Y	....	....	....	....	6.0	4.9	4.7	4.9	4.8	4.6	4.8	5.1	4.8	5.2	4.9	5.1	5.2	5.3
France . . . . . S672056Y	....	....	....	....	4.8	4.2	4.1	3.9	4.1	3.9	3.8	3.8	3.9	4.0	4.2	4.1	4.1	4.1
Cyprus . . . . . S147836Y	....	....	....	....	....	....	....	3.4	3.2	3.5	3.4	3.6	4.0	4.2	3.6	3.7	3.7	3.5
Luxembourg . . . . . S932568Y	....	....	....	....	5.2	6.0	4.2	5.5	5.2	4.8	3.8	6.2	5.9	5.9	6.0	5.3	4.7	5.2
Malta . . . . . S264077Y	....	....	....	....	3.6	4.5	4.6	5.1	5.3	4.7	4.3	4.5	8.0	4.5	4.9	4.5	3.9	3.4
Netherlands . . . . . S429186Y	....	....	....	....	3.9	3.3	3.2	3.2	3.4	2.9	4.1	4.2	4.2	3.5	3.5	3.3	3.6	3.8
Austria . . . . . S348936Y	....	....	....	....	4.7	4.7	4.0	4.2	3.8	3.3	3.5	3.4	3.2	6.6	3.3	3.2	3.2	3.0
Portugal . . . . . S848294Y	....	....	....	....	5.3	5.9	6.4	6.0	5.8	4.9	5.4	4.3	4.3	4.5	4.3	3.4	3.5	2.7
Slovenia . . . . . S467167Y	....	....	....	....	11.8	4.2	3.9	4.9	4.2	4.8	4.8	4.0	4.6	4.5	4.1	4.4	4.6	5.2
Slovakia . . . . . S653558Y	....	....	....	....	7.8	10.2	7.2	6.2	8.5	12.1	5.2	6.4	3.0	2.8	3.8	3.0	2.7	3.3
Finland . . . . . S466843Y	....	....	....	....	5.6	4.4	3.4	3.2	3.5	2.9	3.0	3.1	3.1	3.2	2.9	2.6	2.8	2.9
Euro area . . . . . S328718Y	....	....	....	....	4.3	3.8	3.6	3.7	3.8	2.8	3.9	3.8	3.9	3.9	3.9	3.8	3.8	3.8
Euro area excluding Italy . . . . . S338272Y	....	....	....	....	4.3	3.8	3.7	3.7	3.8	2.8	3.8	3.8	3.8	3.8	3.8	3.5	3.8	3.8
Bulgaria . . . . . S702422Y	....	....	....	....	....	....	....	....	4.2	4.0	3.8	3.6	3.4	3.8	4.4	4.3	8.1	5.7
Czech Republic . . . . . S343058Y	....	....	....	....	19.8	8.2	8.2	9.2	6.9	6.3	8.7	8.9	8.3	7.3	7.5	6.9	6.2	6.2
Denmark . . . . . S740996Y	....	....	....	....	2.5	2.4	2.4	2.3	2.2	2.2	2.2	2.2	2.0	2.3	2.1	2.3	2.1	2.7
Estonia . . . . . S925772Y	....	....	....	....	5.3	4.9	4.8	5.8	4.7	4.2	4.5	5.7	4.7	3.8	4.1	5.4	6.0	6.9
Latvia . . . . . S086419Y	....	....	....	....	2.7	3.3	2.0	3.7	4.3	3.7	3.4	3.5	2.8	4.2	5.0	7.1	6.9	5.7
Lithuania . . . . . S740297Y	....	....	....	....	4.8	5.1	15.3	3.7	3.5	4.8	4.4	4.0	3.5	4.0	3.8	4.5	6.1	5.4
Hungary . . . . . S907975Y	....	....	....	....	....	4.7	5.6	7.9	5.0	5.9	6.6	9.0	5.5	4.8	5.4	6.2	5.4	4.3
Poland . . . . . S652519Y	....	....	....	....	4.0	8.4	4.6	4.8	3.9	2.9	4.0	4.0	4.4	3.9	4.4	4.8	4.8	5.4
Romania . . . . . S044398Y	....	....	....	....	4.6	4.7	3.3	2.8	3.2	4.5	4.1	4.5	4.9	5.0	4.9	6.7	6.9	6.8
Sweden . . . . . S292296Y	....	....	....	....	4.4	3.5	3.6	2.4	3.3	2.9	3.0	3.3	3.1	3.0	3.2	3.2	3.2	3.4
United Kingdom . . . . . S848927Y	....	....	....	....	3.2	2.5	1.9	1.9	1.8	-0.6	2.2	2.2	2.5	2.5	2.7	2.9	2.8	5.3
EU excluding euro area . . . . . S349588Y	....	....	....	....	3.9	3.4	2.7	2.6	2.4	0.7	2.8	2.9	3.0	3.0	3.2	3.4	3.4	5.0
EU . . . . . S132691Y	....	....	....	....	4.3	3.7	3.4	3.4	3.5	2.2	3.6	3.5	3.7	3.6	3.7	3.7	3.7	4.1
EU excluding Italy . . . . . S934247Y	....	....	....	....	4.2	3.7	3.4	3.4	3.4	2.2	3.5	3.5	3.6	3.6	3.6	3.5	3.7	4.1
United States . . . . . S019353Y	....	....	....	....	....	....	....	....	....	....	....	....	....	....	....	....	....	....
Japan . . . . . S580383Y	....	....	....	....	....	....	....	....	....	....	....	....	....	....	....	....	....	....
Canada . . . . . S889267Y	....	....	....	....	....	....	....	....	....	....	....	....	....	....	....	....	....	....

**Table 22**  
**TUEE0350**

**Investment**

(as a percentage of GDP)

	1991	1992	1993	1994	1995	1996	1997	1998	1999	2000	2001	2002	2003	2004	2005	2006	2007	2008
Italy . . . . . S230367Y	3.1	2.9	2.5	2.2	2.1	2.2	2.2	2.3	2.4	2.3	2.4	1.7	2.5	2.4	2.4	2.3	2.3	2.2
Belgium . . . . . S431180Y	1.3	1.4	1.5	1.6	1.9	1.8	1.7	1.7	2.0	2.0	1.7	1.7	1.7	1.6	1.8	1.6	1.6	1.6
Germany . . . . . S430680Y	2.6	2.8	2.7	2.5	2.2	2.1	1.8	1.8	1.9	1.8	1.7	1.7	1.6	1.4	1.4	1.4	1.5	1.5
Ireland . . . . . S014598Y	2.1	2.0	2.2	2.3	2.3	2.4	2.5	2.7	3.1	3.5	4.3	4.3	3.7	3.5	3.5	3.7	4.4	5.4
Greece . . . . . S027748Y	3.1	3.5	3.3	3.1	2.9	2.9	3.1	3.2	3.2	3.6	3.6	3.4	3.6	3.7	2.9	3.0	3.0	2.9
Spain . . . . . S209848Y	4.7	4.0	4.1	3.9	3.7	3.1	3.1	3.3	3.3	3.2	3.3	3.5	3.6	3.4	3.6	3.7	3.8	3.8
France . . . . . S551972Y	3.5	3.5	3.1	3.1	3.2	3.2	2.9	2.8	2.9	3.1	3.0	2.9	3.1	3.1	3.3	3.2	3.3	3.2
Cyprus . . . . . S986203Y	....	....	....	....	....	....	....	2.9	2.5	2.9	2.9	3.0	3.4	4.0	3.1	3.0	3.0	3.0
Luxembourg . . . . . S825798Y	4.5	5.1	5.0	4.2	3.8	4.9	3.0	4.5	4.3	3.8	4.3	4.9	4.6	4.2	4.5	3.6	3.4	3.9
Malta . . . . . S199759Y	....	....	....	....	2.9	3.5	3.7	4.6	4.5	3.9	3.4	4.1	4.7	3.9	4.9	4.1	4.0	2.7
Netherlands . . . . . S327063Y	2.1	2.0	2.0	2.0	3.2	3.3	2.9	3.0	3.0	3.1	3.3	3.5	3.6	3.2	3.3	3.3	3.3	3.3
Austria . . . . . S246179Y	3.2	3.2	3.1	3.2	3.0	2.8	2.0	1.8	1.7	1.5	1.2	1.3	1.2	1.1	1.1	1.1	1.0	1.0
Portugal . . . . . S745487Y	3.3	3.7	3.9	3.5	3.8	4.2	4.5	4.0	4.1	3.8	3.9	3.5	3.1	3.1	2.9	2.4	2.3	2.1
Slovenia . . . . . S376172Y	....	....	....	....	3.2	3.1	2.9	2.9	3.4	3.2	3.2	3.0	3.2	3.5	3.2	3.7	3.7	4.2
Slovakia . . . . . S560134Y	....	....	....	....	2.3	3.8	5.4	4.0	2.9	2.8	3.1	3.3	2.6	2.4	2.1	2.2	1.9	1.8
Finland . . . . . S386606Y	3.8	3.5	2.8	2.9	2.7	2.8	3.1	2.9	2.8	2.5	2.6	2.7	2.9	2.9	2.6	2.4	2.5	2.5
Euro area . . . . . S359297Y	3.0	3.0	2.9	2.7	2.6	2.6	2.4	2.4	2.5	2.5	2.5	2.4	2.5	2.5	2.5	2.5	2.5	2.5
Euro area excluding Italy . . . . . S369605Y	3.0	3.0	2.9	2.8	2.7	2.7	2.5	2.5	2.5	2.5	2.5	2.5	2.5	2.5	2.5	2.5	2.6	2.6
Bulgaria . . . . . S610645Y	....	....	....	....	0.8	0.9	1.4	3.2	3.9	3.7	3.5	2.8	2.7	2.9	4.2	4.2	4.8	5.6
Czech Republic . . . . . S250108Y	....	....	....	....	5.3	4.6	4.3	4.2	3.3	3.6	3.5	3.9	4.5	4.8	4.9	5.0	4.7	4.8
Denmark . . . . . S631013Y	1.5	1.9	1.8	1.8	1.8	1.9	1.8	1.7	1.7	1.7	1.9	1.8	1.6	1.9	1.8	1.9	1.7	1.8
Estonia . . . . . S826745Y	....	....	....	....	5.1	4.4	4.3	4.9	4.3	3.8	4.1	5.3	4.4	3.8	4.0	5.1	5.4	5.6
Latvia . . . . . S006333Y	....	....	....	....	1.9	2.3	1.2	1.4	1.5	1.3	1.1	1.3	2.4	3.1	3.1	4.6	5.7	4.9
Lithuania . . . . . S653850Y	....	....	....	....	3.3	2.4	2.3	2.5	2.6	2.4	2.2	2.9	3.0	3.4	3.4	4.1	5.2	4.9
Hungary . . . . . S781970Y	....	....	....	....	....	1.7	2.6	3.3	2.9	3.2	3.7	4.9	3.5	3.5	4.0	4.4	3.6	2.8
Poland . . . . . S525099Y	....	....	....	....	3.3	3.6	3.9	3.9	3.5	2.4	3.4	3.4	3.3	3.4	3.4	3.9	4.1	4.6
Romania . . . . . S945348Y	....	....	....	....	4.4	4.1	2.7	1.8	1.7	3.4	2.7	3.4	3.5	3.0	3.9	5.1	5.7	5.4
Sweden . . . . . S145226Y	2.1	2.6	1.0	2.8	3.8	3.4	3.0	3.1	3.1	2.8	2.9	3.1	2.9	2.9	3.0	3.1	3.1	3.3
United Kingdom . . . . . S745751Y	2.1	2.0	1.8	1.8	2.0	1.5	1.2	1.3	1.3	1.2	1.4	1.5	1.5	1.7	0.7	1.8	1.8	2.3
EU excluding euro area . . . . . S379617Y	....	....	....	....	2.5	2.1	1.8	1.9	1.8	1.7	1.9	2.0	2.0	2.2	1.6	2.5	2.6	3.0
EU . . . . . S042319Y	2.8	2.8	2.6	2.6	2.6	2.5	2.3	2.3	2.3	2.3	2.4	2.3	2.4	2.4	2.3	2.5	2.5	2.7
EU excluding Italy . . . . . S825591Y	2.8	2.8	2.6	2.6	2.7	2.5	2.3	2.3	2.3	2.3	2.4	2.4	2.4	2.4	2.2	2.5	2.6	2.7
United States . . . . . S927352Y	2.5	2.5	2.4	2.3	2.3	2.4	2.3	2.4	2.5	2.6	2.7	2.7	2.6	2.6	2.5	2.4	2.6	....
Japan . . . . . S470251Y	....	....	....	....	....	7.5	6.6	6.5	6.8	6.0	5.8	5.4	4.8	4.4	5.8	3.7	3.5	....
Canada . . . . . S779271Y	3.1	3.0	2.7	2.8	2.7	2.3	2.3	2.2	2.0	2.3	2.5	2.5	2.5	2.5	2.7	2.8	3.0	....

## METHODOLOGICAL APPENDIX

### GENERAL INDICATIONS

The series refer to the consolidated general government accounts and gross debt of the European Union countries and of the remaining G-7 countries (the United States, Japan and Canada). For the European countries this Supplement refers to the data obtained for the Excessive deficit procedure laid down in the Maastricht Treaty. For these countries total revenue and total expenditure are defined according to Commission Regulation (EC) No. 1500/2000. The data on Italy include - as memorandum items - revenue (total and current) and expenditure (total and current, including and excluding interest payments) defined in accordance with the traditional format for general government accounts. In the transition from the traditional account aggregates to those computed in accordance with Commission Regulation (EC) No. 1500/2000, on the one hand, gross operating surplus and indirect taxes on products paid by general government are excluded from both revenue and expenditure items; on the other hand, proceeds from the sale of goods and services, residual sales and production for own use are added to revenue rather than deducted from expenditure. By construction the adjustments have the same impact on revenue and expenditure, leaving the balances unaltered; they affect "other current revenue" and "other current expenditure", residual items not explicitly mentioned in this Supplement.

The time series cover the period 1980-2008. The paper version of the Supplement provides data only for 1991-2008; those for the years 1980-1990 are available in the electronic version of the Supplement.

The sources used are as follows:

- Istat, for Italy;
- for European countries, European Commission, DG II Economic and Financial Affairs, General Government Data, October 2004 (data based on the 1979 version of the European System of Accounts - ESA79) and May 2009 (data based on the 1995 version of the European System of Accounts - ESA95); for data on capital taxes based on ESA79, European Commission, March 1999, and Eurostat, supplemented by data supplied directly by the Commission;
- OECD, Annual National Accounts 2009, at [www.sourceoecd.org](http://www.sourceoecd.org) (as updated to July 2009) for the items of the economic accounts of the United States, Japan and Canada;
- OECD, Economic Outlook 2009, at [www.sourceoecd.org](http://www.sourceoecd.org) (as updated to July 2009) for the GDP and debt of the United States, Japan and Canada.

Owing to the differences between the methods used by the OECD and the other sources in constructing general government accounts, the single items are strictly comparable only for the European Union countries.

For Italy, the data are based on ESA95 for the entire period 1980-2008.

For the other European countries, data based on ESA95 are available for different periods. For comparability, this Supplement sets the accounting change in the same year for every country. The data for 1980-1994 are based on ESA79 and those from 1995 onwards on ESA95. In the tables the breaks due to the change in the European system of accounts are marked by a boldface vertical line.

Some of the Commission data concerning individual items of the general government accounts have been adjusted. In particular, for those based on ESA79, the Commission disaggregation does not show total capital revenue and total capital expenditure separately, but gives only the balance. Here, in order to obtain the separate items, the Commission data have

been supplemented by other data provided by Eurostat and the Commission itself, and by Bank of Italy estimates where necessary. As a first step, series were constructed for capital revenue. These were then used, together with the Commission series for capital account balance, to obtain series for total capital expenditure. The capital revenue and expenditure series were then used to recalculate the series for total revenue and total expenditure, which thus differ from those used by the EU Commission (in particular, total expenditure was not obtained by adding capital expenditure net of capital revenue to current expenditure, as the Commission does, but by adding total capital expenditure). Instead, for the data based on ESA95, total expenditure series (obtained as the sum of current expenditure and capital expenditure) and total revenue series (inclusive of capital revenue) are available from the Commission.

For the data on revenue (total and current) and expenditure (total and current, including and excluding interest payments) - defined in accordance with Regulation (EC) No. 1500/2000 - figures are based on ESA95. The data cover the period 1980-2008 for Italy, and 1995-2008 for the other European countries.

For the individual items of the accounts, averages have been calculated for the 16 countries belonging to the euro area in January 2009 (Belgium, Germany, Ireland, Greece, Spain, France, Italy, Cyprus, Luxembourg, Malta, the Netherlands, Austria, Portugal, Slovenia, Slovakia and Finland), both including and excluding Italy. For data based on ESA79, the averages are computed by weighting the ratios to GDP, where the weights are the ratios of the GDP of each country (expressed in euros) to the total GDP of the relevant group of countries. For data based on ESA95, the averages are computed as ratios of the sum, for the relevant countries, of the values of the variable under consideration (expressed in euros) to the sum, for the same countries, of the values of GDP (expressed in euros). In both cases, the values of GDP are those determined for the Excessive Deficit Procedure. Where a figure is missing for a country, the average has been calculated omitting that country. Averages have been computed using data (including those for Italy) based on ESA79 until 1994.

For the sake of comparability, the euro area includes Greece, Cyprus, Malta, Slovenia and Slovakia in all the years considered.

The figures for Germany up to and including 1990 refer to the country's western regions.

The data referring to the EU countries include the proceeds of the sale of UMTS licences. These proceeds are recorded, with a negative sign, among capital expenditure.

Because of rounding, the sum of the separate items may sometimes differ from the total shown.

Prepared by Paola Umaldi. The Bank of Italy thanks the Economic and Financial Affairs Directorate General of the European Commission, Eurostat and the OECD for permission to use data they produce.

## NOTES TO THE TABLES

*The order of the tables in the following notes is based on their code numbers. The notes to each table are set out below; together with references to the "Notes to the classification variables" section where appropriate.*

### **TUEE0100 - NET BORROWING (+)/LENDING (-)**

The balance of the consolidated general government accounts (excluding financial transactions). The item corresponds to the net resources the general government makes available to other sectors.

### **TUEE0110 - PRIMARY NET BORROWING (+)/LENDING (-)**

Net borrowing or lending excluding interest payments (see the note to Table TUEE0280).

### **TUEE0120 - CURRENT ACCOUNT BALANCE**

The difference between current expenditure and current revenue (see the notes to Tables TUEE0160 and TUEE0260). A positive balance indicates a deficit, a negative balance a surplus, i.e. public saving.

### **TUEE0130 - CAPITAL ACCOUNT BALANCE**

The difference between capital expenditure and capital revenue.

### **TUEE0140 - GROSS PUBLIC DEBT**

For the EU countries, the definition is that adopted for the Excessive deficit procedure provided for in the Treaty on the European Union (on the basis of the methods specified in Council Regulation No. 3605/93). The aggregate refers to the total gross debt at the nominal value outstanding at the end of the year of general government, with the exception of those liabilities of which the corresponding financial assets are held by the sector of general government.

For the United States, Japan and Canada, data are processed according to SNA93.

### **TUEE0150 - TOTAL REVENUE (REGULATION EC 1500/2000)**

The sum of current revenue and capital revenue. For the EU countries data on total revenue are defined according to Commission Regulation (EC) No. 1500/2000. The data on Italy include - as memorandum items - total revenue defined in accordance with the traditional format for general government accounts. In the transition from the traditional account aggregates to those calculated in accordance with Commission Regulation (EC) No. 1500/2000, gross operating surplus and indirect taxes on

products paid by general government are excluded from revenue while proceeds from the sale of goods and services, residual sales and production for own use are added. An adjustment of the same size is made for total expenditure, implying a null impact on net borrowing.

### **TUEE0160 - CURRENT REVENUE (REGULATION EC 1500/2000)**

The sum of direct taxes, indirect taxes, social security contributions and other current revenue. For the EU countries, data on current revenue are defined according to Commission Regulation (EC) No. 1500/2000. The data on Italy include - as memorandum items - current revenue defined in accordance with the traditional format for general government accounts. In the transition from the traditional account aggregates to those calculated in accordance with Commission Regulation (EC) No. 1500/2000, gross operating surplus and indirect taxes on products paid by general government are excluded from current revenue while proceeds from the sale of goods and services, residual sales and production for own use are added. An adjustment of the same size is made for current expenditure, implying a null impact on the current balance.

### **TUEE0170 - TAX REVENUE AND SOCIAL SECURITY CONTRIBUTIONS**

The sum of direct and indirect taxes, social security contributions and capital taxes (see the notes to Tables TUEE0210, TUEE0220 and TUEE0230).

### **TUEE0180 - TAX REVENUE AND SOCIAL SECURITY CONTRIBUTIONS, EXCLUDING CAPITAL TAXES**

The sum of direct and indirect taxes and social security contributions (see the notes to Tables TUEE0210, TUEE0220 and TUEE0230).

### **TUEE0210 - DIRECT TAXES**

Taxes on income and wealth due to general government.

### **TUEE0220 - INDIRECT TAXES**

Taxes on the production and importation of goods and services due to general government.

**TUEE0230 - SOCIAL SECURITY CONTRIBUTIONS**

The sum of actual social security contributions paid by workers and employers (directly or through ad hoc agencies) and imputed social security contributions. The figures for Canada do not include imputed social security contributions.

**TUEE0240 - TOTAL EXPENDITURE (REGULATION EC 1500/2000)**

The sum of current and capital expenditure (see the notes to tables TUEE0260 and TUEE0400). For the EU countries data on current expenditure are defined according to Commission Regulation (EC) No. 1500/2000. The data on Italy include - as memorandum items - current expenditure defined in accordance with the traditional format for general government accounts. In the transition from the traditional account aggregates to those calculated in accordance with Commission Regulation (EC) No. 1500/2000, current expenditure excludes the sale of goods and services, residual sales and production for own use, which are computed as minor expenses in the traditional accounts, the gross operating surplus and the indirect taxes on products paid by general government. An adjustment of the same size is made for total revenue, implying a null impact on net borrowing.

**TUEE0250 - TOTAL EXPENDITURE, EXCLUDING INTEREST PAYMENTS (REGULATION EC 1500/2000)**

The difference between total expenditure and interest payments (see the notes to Tables TUEE0240 and TUEE0280).

**TUEE0260 - CURRENT EXPENDITURE (REGULATION EC 1500/2000)**

The sum of current transfers, interest payments and final consumption expenditure. For the EU countries, data on current expenditure are defined according to Commission Regulation (EC) No. 1500/2000. The data on Italy include - as memorandum items - current expenditure defined in accordance with the traditional format for general government accounts. In the transition from the traditional account aggregates to those calculated in accordance with Commission Regulation (EC) No. 1500/2000, current expenditure excludes the sale of goods and services, residual sales and production for own use, which are computed as minor expenses in the traditional accounts, the gross operating surplus and the indirect taxes on products paid by general government. An

adjustment of the same size is made for current revenue, implying a null impact on the current balance.

**TUEE0270 - CURRENT EXPENDITURE, EXCLUDING INTEREST PAYMENTS (REGULATION EC 1500/2000)**

The difference between current expenditure and interest payments (see the notes to Tables TUEE0260 and TUEE0280).

**TUEE0280 - INTEREST PAYMENTS**

Interest payments and other borrowing costs, including the effects of swaps and forward rate agreements.

**TUEE0290 - FINAL CONSUMPTION EXPENDITURE**

Expenditure incurred by general government (compensation of employees, purchases of goods and services, social transfers in kind related to expenditure on products supplied to households via market producers and consumption of fixed capital) for the satisfaction of individual or collective needs.

**TUEE0300 - COMPENSATION OF EMPLOYEES**

General government payments in cash or in kind to employees, including net earnings and actual and imputed social security contributions.

**TUEE0330 - SOCIAL BENEFITS OTHER THAN SOCIAL TRANSFERS IN KIND**

Social benefits, including social security and social assistance benefits in cash.

**TUEE0350 - INVESTMENT**

Gross (with respect to depreciation) fixed capital formation, consisting of the value of purchases less sales of durable goods to be utilized in production processes for a period longer than one year. The data based on ESA79 include net purchases of land.

**TUEE0400 - CAPITAL EXPENDITURE**

Investment (see the note to table TUEE0350), net acquisition of other non-financial assets and capital transfers. The net acquisition of other non-financial assets includes the proceeds of the sale of UMTS licences (with a negative sign). In EU countries, these proceeds were mainly recorded in 2000.



## GENERAL INFORMATION

- I - Unless indicated otherwise, figures have been computed by the Bank of Italy.
- II - Symbols and Conventions:
- the phenomenon in question does not occur;
  - .... the phenomenon occurs but its value is not known;
  - .. the value is known but is nil or less than half the final digit shown.
- Figures in parentheses in roman type () are provisional, those in parentheses in italics () are estimated.
- III - The tables are identified both by a number and by an alphanumeric code that defines the content of the table in the database in the electronic archive in which information to be released to the public is held. A similar code identifies the different aggregates shown in each table.
- IV - The methodological notes in the last part of the Supplement are identified by electronic codes that refer to the tables and, within each table, to the individual aggregates. Notes that refer to a single observation are also identified by the date of that observation.

## SUPPLEMENTS TO THE STATISTICAL BULLETIN

**Money and Banking** (monthly)

**The Financial Market** (monthly)

**The Public Finances, borrowing requirement and debt** (monthly)

**Balance of Payments and International Investment Position** (monthly)

**Financial Accounts** (quarterly)

**Payment System** (half yearly)

**Public Finance Statistics in the European Union** (annual)

**Local Government Debt** (annual)

**Household Wealth in Italy** (annual)

**Sample Surveys** (irregular)

**Methodological Notes** (irregular)

*All the supplements are available on the Bank of Italy's site ([www.bancaditalia.it](http://www.bancaditalia.it)).*

*Requests for clarifications concerning data contained in this publication can be sent by e-mail to [statistiche@bancaditalia.it](mailto:statistiche@bancaditalia.it)*

