



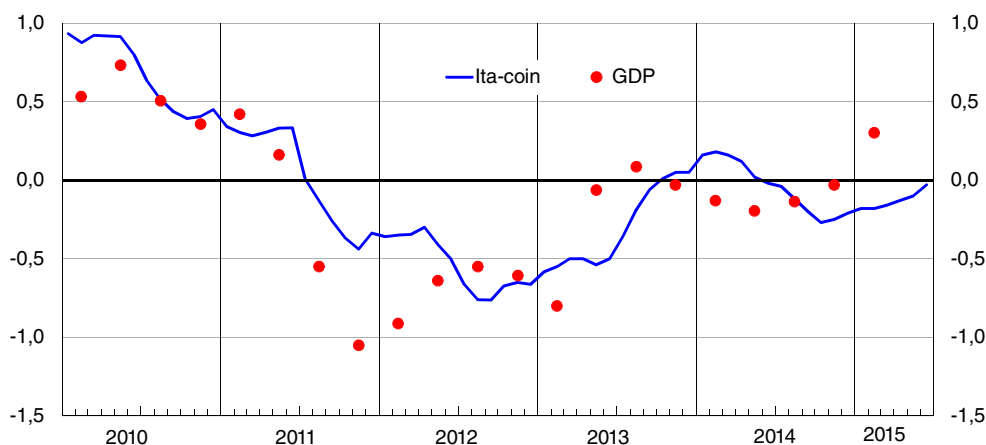
ECONOMIC ACTIVITY AND EMPLOYMENT	1
FOREIGN TRADE AND COMPETITIVENESS	5
INFLATION	7
CREDIT	8
THE PUBLIC FINANCES	11
MACROECONOMIC PROJECTIONS	12

NUMBER 99  
JULY 2015

# THE ITALIAN ECONOMY IN BRIEF

Directorate general for economics, statistics and research

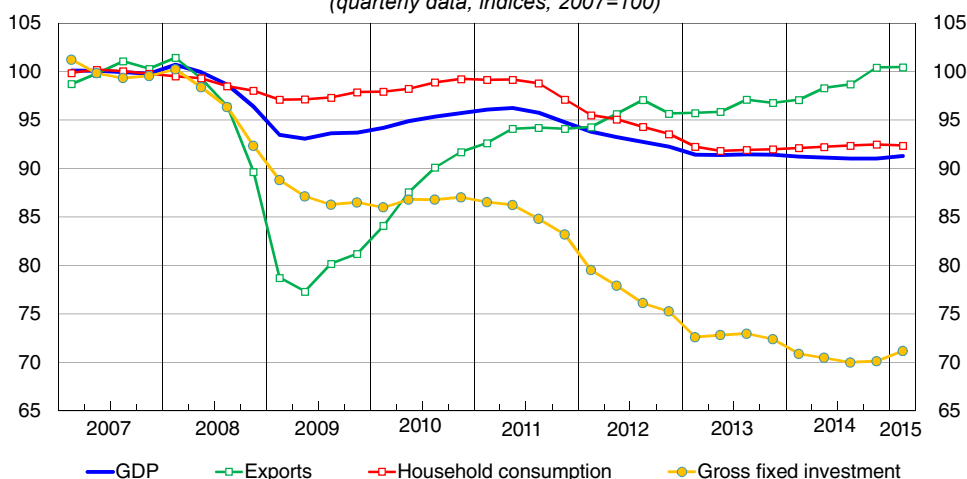
Coincident indicator (Ita-coin) and Italian GDP (1)  
(percentage changes)



Source: Banca d'Italia.  
(1) Percentage change over the previous quarter. The Ita-coin indicator tracks quarterly Italian GDP growth net of the most volatile components.

### GDP and the main components of demand (1)

(quarterly data; indices, 2007=100)



Source: Based on Istat data.  
 (1) Chain-linked volumes adjusted for seasonal and calendar effect

### GDP, national demand, foreign trade

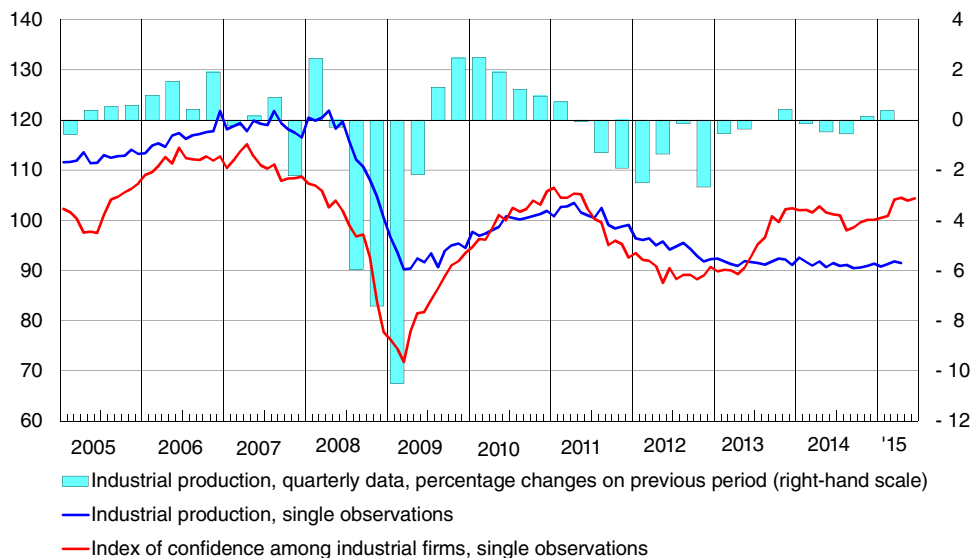
(Chained linked volumes; percentage changes on previous period; seasonally and working-day adjusted for quarterly data)

	Gross domestic product	Gross fixed investment	Resident household and NPISH consumption (1)	Government consumption	Total national demand (2)	Exports of goods and services	Imports of goods and services
2011	0.6	-1.9	0.0	-1.8	-0.6	5.2	0.5
2012	-2.8	-9.3	-3.9	-1.2	-5.6	2.3	-8.1
2013	-1.7	-5.8	-2.8	-0.3	-2.5	0.5	-2.3
2014	-0.4	-3.3	0.3	-1.0	-0.7	2.6	1.8
2014 II	-0.1	-0.6	0.1	-0.6	-0.2	1.3	1.2
III	-0.1	-0.7	0.2	0.2	0.0	0.4	0.8
IV	0.0	0.2	0.1	0.4	-0.4	1.8	0.5
2015 I	0.3	1.5	-0.1	0.1	0.7	0.0	1.4

Source: Istat.  
 (1) Non-profit institutions serving households.  
 (2) Including changes in inventories and acquisitions less disposals of valuable

### Industrial production and business confidence

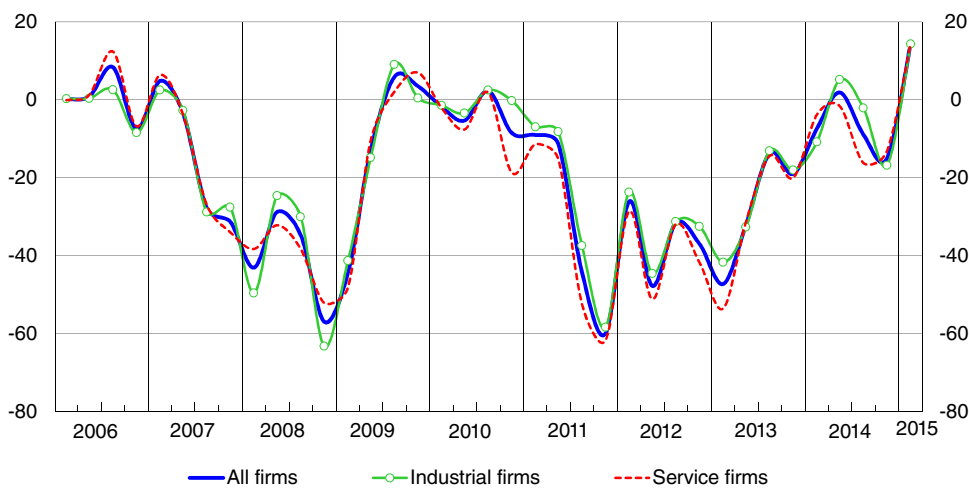
(indices, 2010=100; seasonally adjusted data)



Source: Based on Istat data.

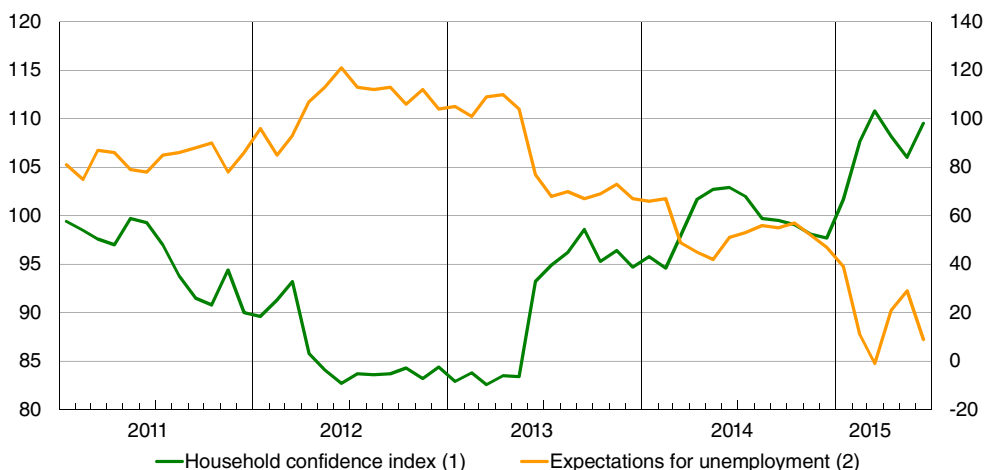
### Firms' assessment of the conditions for investing compared with the previous quarter (1)

(quarterly data; percentage points)



(1) Balance between judgments of improvement and of deterioration compared, with the previous quarter reported in the quarterly Survey on Inflation and Growth Expectations, conducted by the Bank of Italy with I Sole 24 Ore among service firms industrial firms and published in Supplements to the Statistical Bulletin and non-construction

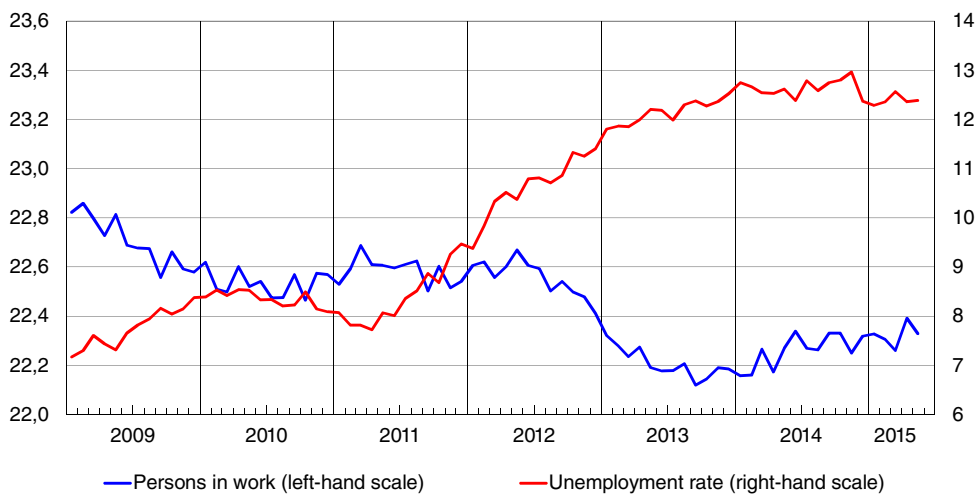
### Household confidence index and expectations for unemployment *(seasonally adjusted data)*



Source: Based on Istat data.

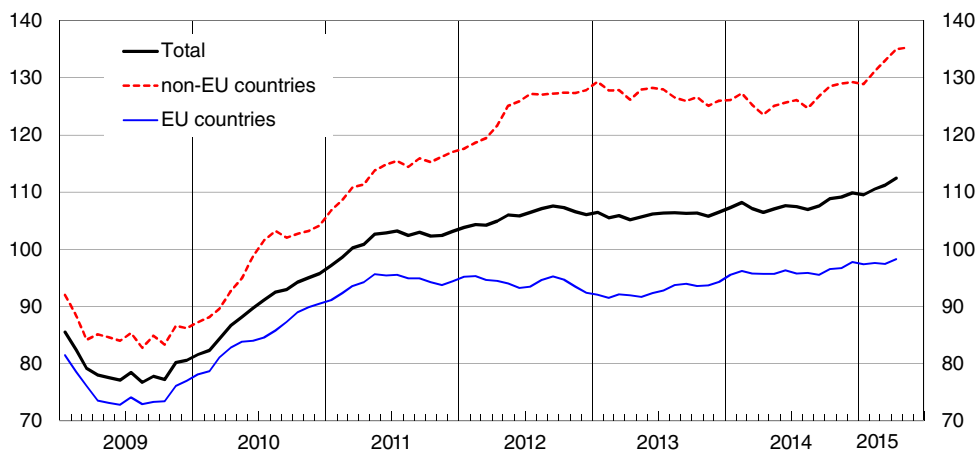
(1) Indices, 2010=100. In June 2013 Istat introduced methodological innovations such that subsequent data are not directly comparable with those preceding that date. – (2) Right-hand scale. The indicator is the simple average of the weighted balance between positive responses ("high", "increasing") and negative responses ("low", "decreasing") to the questions on the trend in unemployment.

### Persons in work and unemployment rate *(seasonally adjusted monthly data; millions of persons and per cent)*



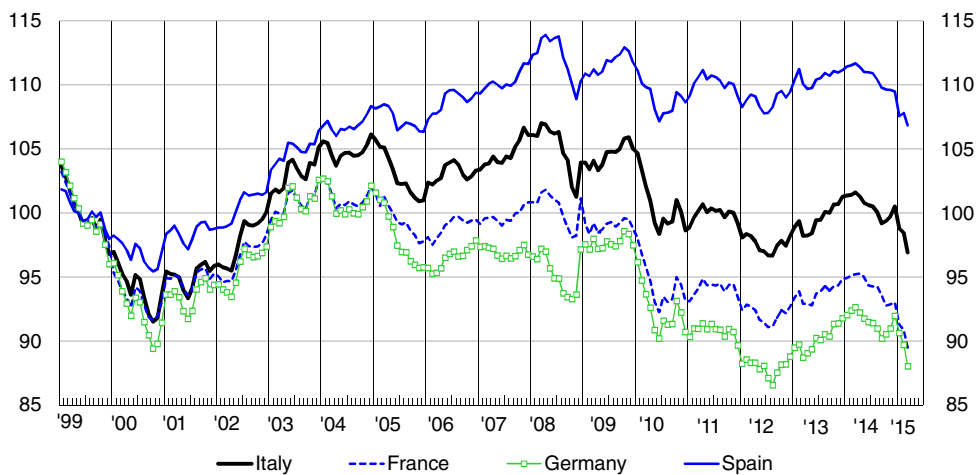
Source: Istat, Rilevazione sulle forze di lavoro, monthly estimates, provisional

### Italy's exports of goods in value (seasonally adjusted; index, 2007 Q4 = 100; three-term moving averages ending in the reference month)



Source: Based on Istat data.

### Indicators of competitiveness (1) (monthly data; indices, 1999=100)

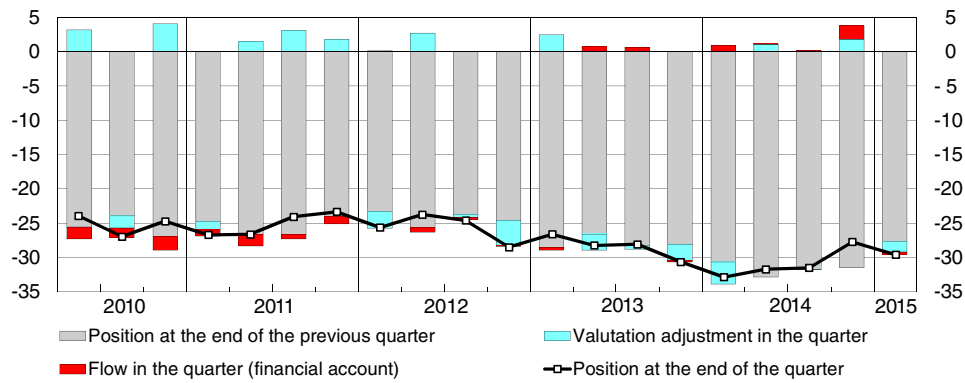


Sources: Based on IMF, OECD and Eurostat data.

(1) In relation to 61 competitor countries; based on producer prices of manufactured goods. An increase in an index indicates a loss of competitiveness.

## International investment position (1)

(percentages of GDP)

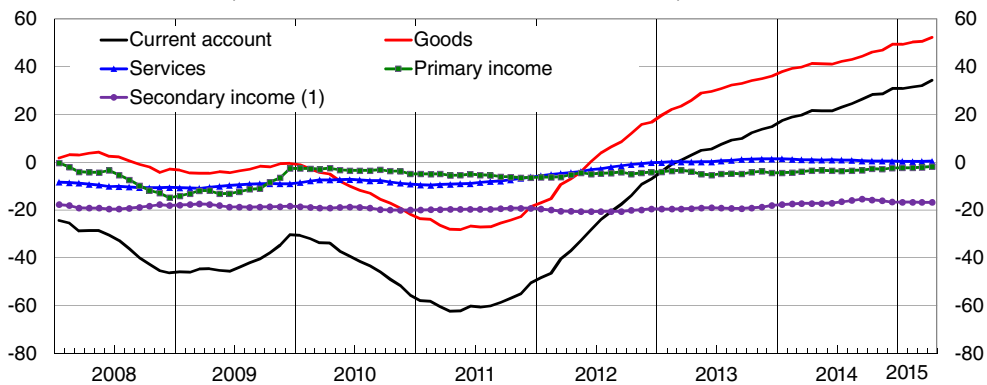


Source for GDP: ISTAT.

(1) The position at the end of the quarter is equal to the position at the end of the previous quarter adjusted for the flows on the financial account during the quarter and for valuation adjustments.

## Italy: current account of the balance of payments

(12-month cumulative balance; billions of euros)



(1) According to the IMF Balance of Payments Manual 6th edition, secondary income consists in almost all the items previously classed as current transfers.

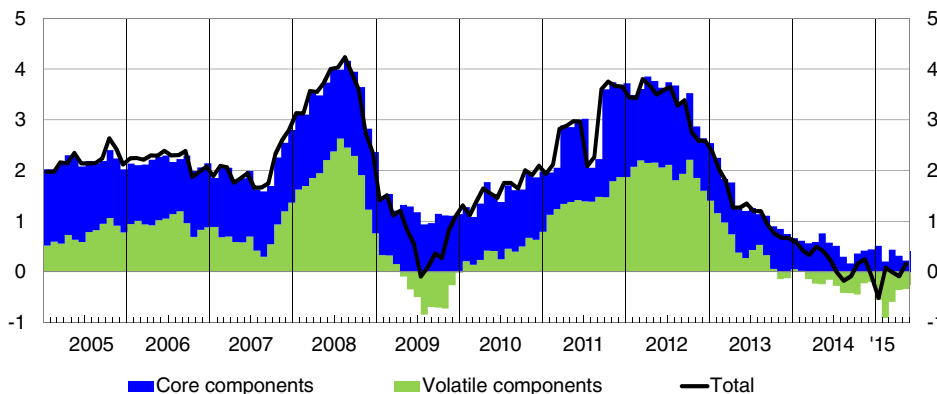
## Balance of payments

(net balances; billions of euros)

	Current account		Capital account	Net lending to the rest of the world	Financial account			
	Total	of which: Merchandise			Total	of which: Portfolio investment	Change in reserve assets	Errors and omissions C-(A+B)
	A		B	(A+B)	C			
2011	-50.4	-18.6	1.0	-49.3	-69.1	9.7	0.9	-19.7
2012	-6.9	16.8	4.0	-3.0	-14.8	-25.9	1.5	-11.8
2013	15.0	36.1	0.2	15.1	11.3	-14.6	1.5	-3.8
2014	30.9	49.5	3.4	34.3	50.2	-4.5	-1.0	15.9
2014 Jan.-April	2.6	12.6	-0.6	2.0	18.0	-49.3	0.1	15.9
2015 Jan.-April	6.0	15.5	-0.4	5.7	0.7	-2.0	-0.3	-4.9
2014 April	2.9	4.2	0.0	2.8	3.1	-17.6	0.2	0.2
May	0.8	4.2	0.0	0.8	-4.1	-23.2	-0.2	-5.0
June	2.6	3.9	0.3	2.9	1.8	-4.9	-0.1	-1.1
July	7.6	7.4	0.2	7.8	4.3	-11.1	0.3	-3.6
Aug.	1.6	2.7	0.2	1.8	4.3	25.5	-0.1	2.5
Sept.	1.3	2.6	0.1	1.4	-5.4	11.8	-0.1	-6.8
Oct.	6.0	5.9	1.3	7.3	12.6	18.5	-0.7	5.3
Nov.	3.2	4.0	1.2	4.3	9.6	5.3	0.2	5.3
Dec.	5.2	6.2	0.8	6.0	9.3	22.9	-0.3	3.3
2015 Jan.	-1.4	0.8	0.0	-1.5	-4.4	-16.8	0.0	-2.9
Feb.	1.3	4.1	0.0	1.3	-2.4	10.9	-0.1	-3.6
Mar.	1.1	4.6	-0.2	0.8	0.4	-2.1	-0.3	-0.4
April	5.1	6.0	-0.1	5.0	7.1	5.9	0.1	2.1

### Consumer price inflation and contributions of the main components (1)

(monthly data; percentage changes over 12-months and percentage points)



Source: Based on Eurostat data.

(1) Harmonized index of consumer prices. The core component consists of non-food, non-energy and services; the volatile component is food and energy goods.

### Indicators of inflation in Italy (monthly data; 12-month percentage changes)

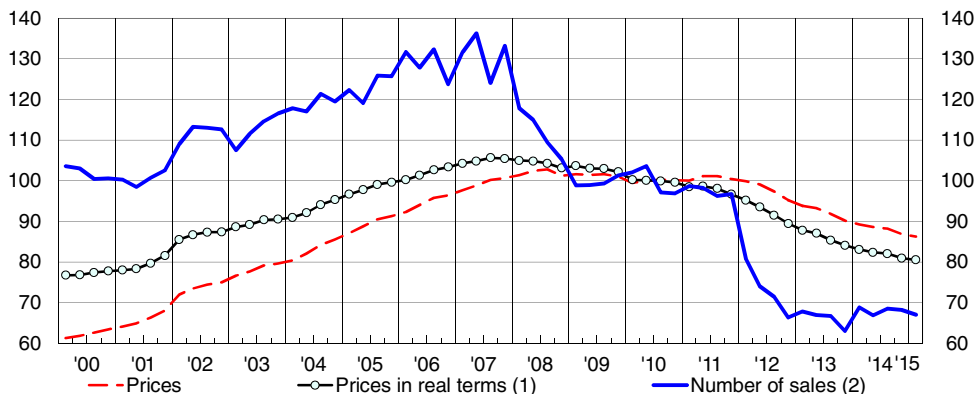
	HICP (1)				CPI (2)		PPI (3)
	Overall index	Excl. energy	Excl. Energy and food	Overall index at constant taxation	Overall index	Overall index	Non-food products
2014 Mar.	0.3	0.8	0.9	-0.1	0.4	-1.9	0.7
April	0.5	0.9	1.1	0.2	0.6	-1.7	0.9
May	0.4	0.6	0.8	0.0	0.5	-1.7	1.1
June	0.2	0.3	0.7	-0.2	0.3	-1.8	0.7
July	0.0	0.3	0.5	-0.3	0.1	-1.9	0.9
Aug.	-0.2	0.2	0.4	-0.6	-0.1	-2.1	0.8
Sept.	-0.1	0.3	0.5	-0.5	-0.2	-2.0	0.8
Oct.	0.2	0.4	0.6	0.2	0.1	-1.5	0.7
Nov.	0.3	0.6	0.6	0.3	0.2	-1.5	0.6
Dec.	-0.1	0.5	0.7	-0.1	0.0	-2.1	0.5
2015 Jan.	-0.5	0.3	0.5	-0.5	-0.6	-3.8	0.4
Feb.	0.1	1.0	0.9	0.0	-0.1	-3.2	0.6
Mar.	0.0	0.7	0.4	-0.1	-0.1	-3.0	0.5
April	-0.1	0.6	0.3	-0.3	-0.1	-3.0	-0.1
May	0.2	0.8	0.7	0.2	0.1	-2.7	-0.1

Source: Based on Istat and Eurostat data.

(1) Harmonized index of consumer prices. – (2) Consumer price index for the entire resident population. – (3) Index of producer prices of industrial products sold on the domestic market.

### House prices and sales

(quarterly data; indices, 2005=100)

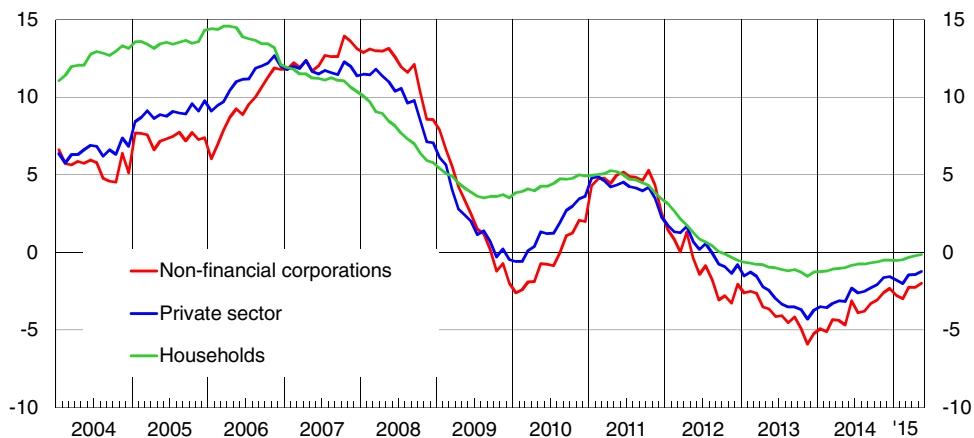


Sources: Based on Osservatorio del Mercato Immobiliare, Bank of Italy, Istat, and Consulente immobiliare data.

(1) House prices deflated by the consumer price index. (2) Adjusted for seasonal and calendar effects.

### Bank lending to the private sector (1)

(monthly data; 12-month percentage changes)

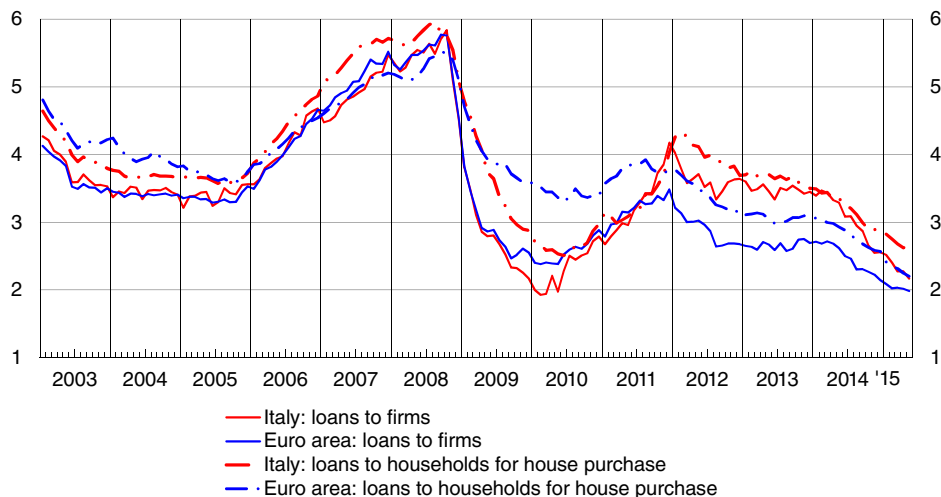


Source: Supervisory reports.

(1) Includes bad debts, repos and loans not recorded in banks' balance sheets because they have been securitized. The percentage changes are net of reclassifications, exchange rate variations value adjustments and other variations not due to transactions; operations concluded with central counterparties are excluded.

### Interest rates on new loans (1)

(monthly data; per cent)



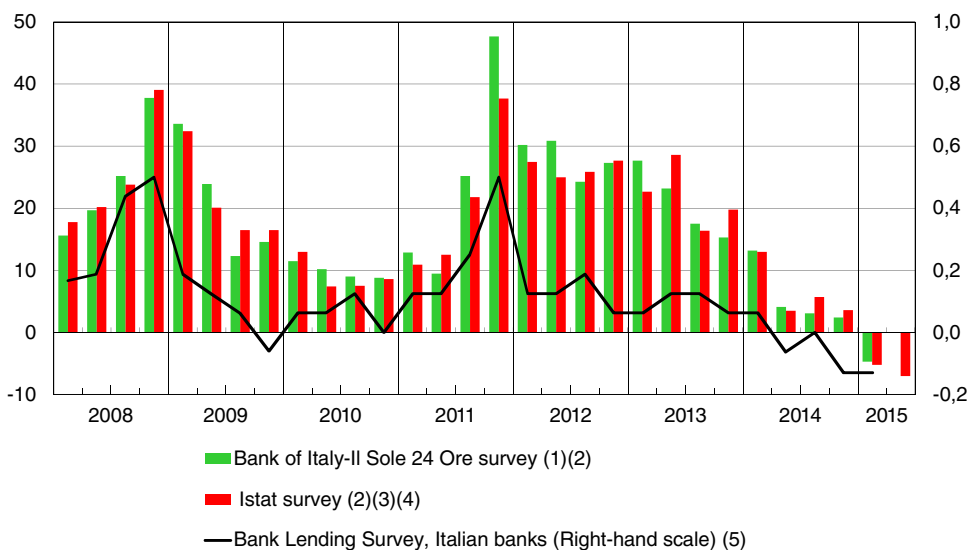
Source: Based on Bank of Italy and ECB data.

(1) Averages. Data refer only to transactions in euros and are gathered and processed using the Eurosystem's harmonized method.

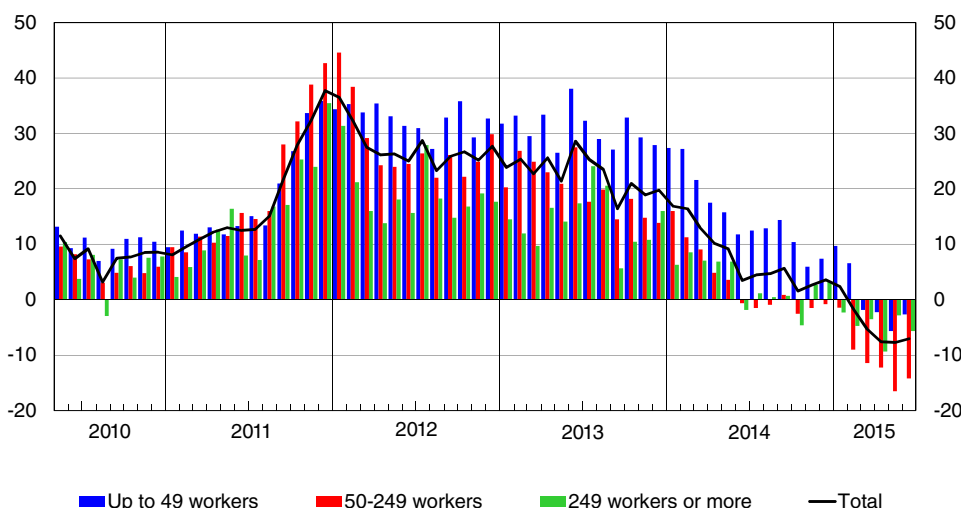


### Credit access conditions for Italian firms

a) Total  
(quarterly data)



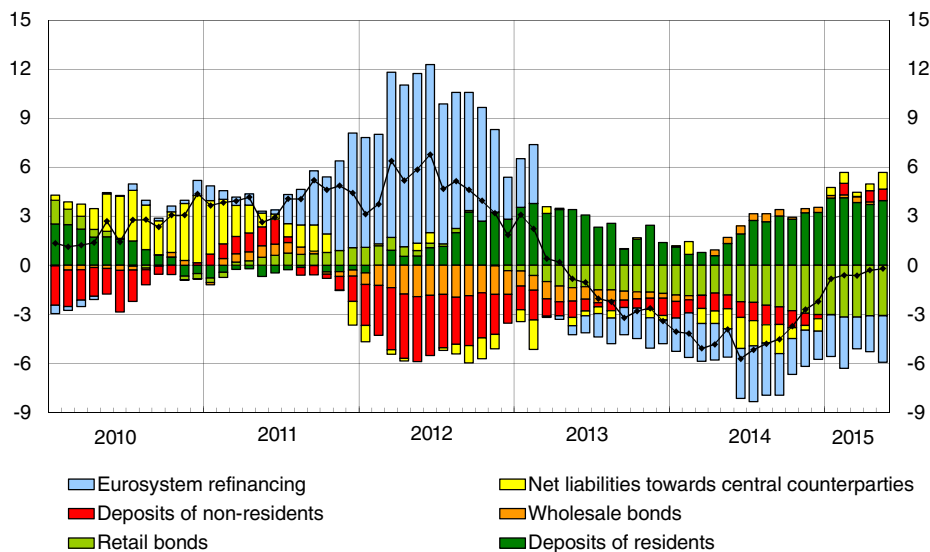
b) By firm size (2)(3)  
(monthly data)



(1) Source: Bank of Italy, Survey on inflation and growth expectations. The survey is conducted on samples of firms in industry (excluding construction) and services. - (2) Net percentage of firms reporting difficulty in obtaining credit calculated as the difference between the percentage of replies indicating a tightening of lending conditions and the percentage of those indicating an easing. - (3) Source: Istat, Business confidence survey in the manufacturing sector. In June 2013 some methodological changes involving the sample and data observation techniques were made precluding direct comparison with previous periods. - (4) Last survey in the quarter. - (5) Source: The euro area bank lending survey. Degree of credit supply tightening compared with the previous quarter (diffusion index); based on the replies by eight leading Italian banking groups.

### Growth in bank funding: contributions of the various components (1)

(percentage points and 12-month percentage changes)

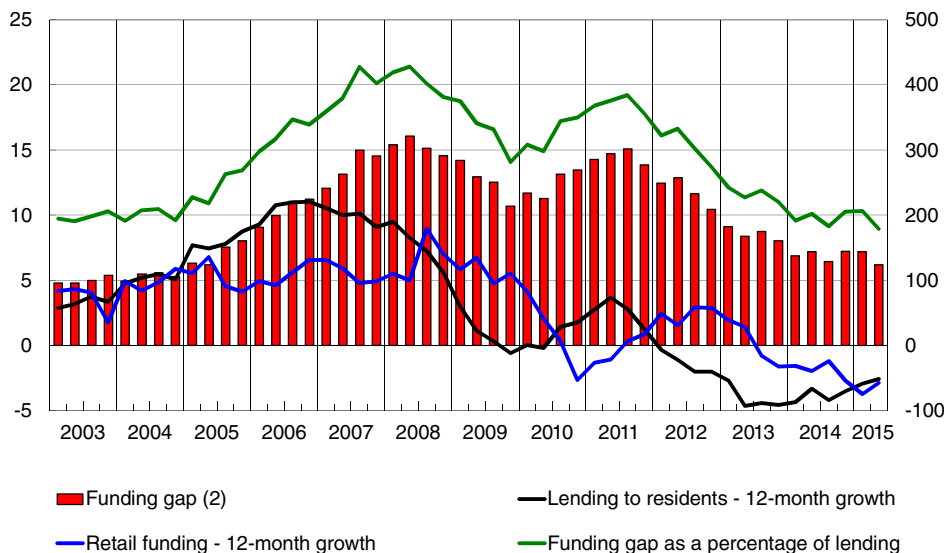


Source: Supervisory reports.

(1) The sum of the contributions is equal to the percentage change over 12 months in the total funds raised. The percentage changes in the single components are calculated net of reclassifications, exchange-rate variations, value adjustments and other variations not due to transactions. Liabilities towards resident monetary financial institutions are excluded. Net liabilities towards central counterparties are the funds raised by way of repos with non-residents via central counterparties.

### Italian banks' funding gap (1)

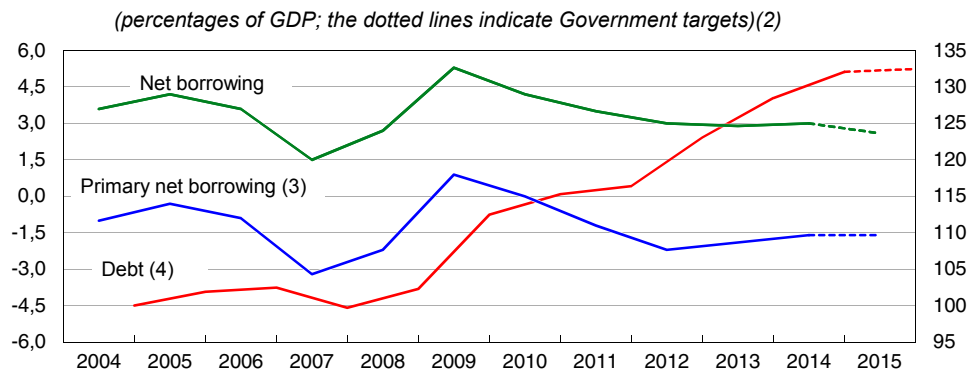
(billions of euros and per cent)



Source: Supervisory reports. Excludes Cassa Depositi e Prestiti and branches of foreign banks.

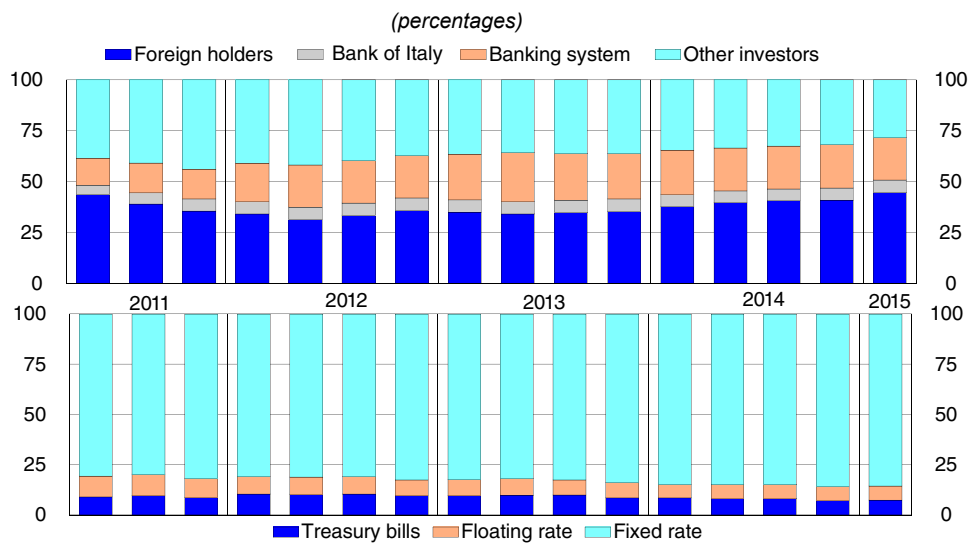
(1) Difference between lending to residents and retail funding (residents' deposits plus bank bonds subscribed by households). (2) Right-hand scale (billions). For 2015, funding gap last data at the end of May.

### General government net borrowing, primary net borrowing and debt (1)



(1) The data are in accordance with ESA 2010. (2) Source: 2015 Economic and Financial Document (April 2015). (3) Overall balance net of interest payments. (4) Calculated according to the EC Regulation no. 2009/479; Right-hand scale.

### Stock of government securities by type of investor and security



### Government benchmark bonds: gross yields to maturity

(annual and monthly averages of daily data)

	Fixed rate					Floating rate
	2 years	3 years	5 years	10 years	30 years	
2011	3.80	4.19	4.68	5.43	6.04	4.29
2012	3.15	3.63	4.53	5.51	6.01	5.11
2013	1.61	2.21	3.11	4.32	5.03	2.54
2014	0.70	0.96	1.57	2.90	4.03	1.36
2014 July.	0.56	0.78	1.38	2.79	3.99	1.28
Aug.	0.43	0.66	1.24	2.63	3.82	1.21
Sept.	0.43	0.57	1.07	2.40	3.70	1.13
Oct.	0.62	0.78	1.15	2.42	3.76	1.19
Nov.	0.60	0.78	1.10	2.29	3.70	1.23
Dec.	0.57	0.74	1.05	1.99	3.33	1.11
2015 Jan.	0.42	0.58	0.89	1.70	3.02	0.93
Feb.	0.29	0.43	0.78	1.56	2.63	0.76
Mar.	0.23	0.27	0.55	1.29	2.17	0.57
Apr.	0.14	0.27	0.56	1.36	2.26	0.75
May	0.14	0.36	0.82	1.81	2.87	0.77
June	0.28	0.54	1.14	2.20	3.23	0.82

## Growth and inflation forecasts – Italy

## Growth

(percentage change on previous period) (1)

	2014				2015				2016				2014	2015	2016
	Q1	Q2	Q3	Q4	Q1	Q2	Q3	Q4	Q1	Q2	Q3	Q4			
Bank of Italy (Jan.)(2)	-	-	-	-	-	-	-	-	-	-	-	-	-0.4	0.4	1.2
European Commission (May)(3)	-0.1	-0.2	-0.1	0.0	0.1	0.2	0.4	0.5	0.1	0.4	0.5	0.6	-0.4	0.6	1.4
IMF (Apr.)(4)	-	-	-	-	-	-	-	-	-	-	-	-	-0.4	0.5	1.1
OECD (June)(5)	-	-	-	-	-	-	-	-	-	-	-	-	-0.4	0.6	1.5
Consensus Economics (June)(6)	-	-	-	-	-	-	-	-	-	-	-	-	-0.4	0.7	1.2

## Inflation (7)

(percentage change on corresponding period of previous year)

	2014				2015				2016				2014	2015	2016
	Q1	Q2	Q3	Q4	Q1	Q2	Q3	Q4	Q1	Q2	Q3	Q4			
Bank of Italy (Jan.)(2)	-	-	-	-	-	-	-	-	-	-	-	-	0.2	-0.2	0.7
European Commission (May)(3)	0.5	0.4	-0.1	0.1	-0.1	0.0	0.4	0.7	1.7	1.8	1.9	1.9	0.2	0.2	1.8
IMF (Apr.)(4)	-	-	-	-	-	-	-	-	-	-	-	-	0.2	0.0	0.8
OECD (June)(5)	-	-	-	-	-	-	-	-	-	-	-	-	0.2	0.2	1.3
Consensus Economics (June)(6)	-	-	-	-	-	-	-	-	-	-	-	-	0.2	0.2	0.9

(1) The quarterly data are seasonally adjusted.

(2) Source: Economic Bulletin No. 1, January 2015. GDP data adjusted for calendar effects.

(3) Source: European Economic Forecast - Spring 2015.

(4) Source: World Economic Outlook, April 2015.

(5) Source: OECD Economic Outlook, June 2015. GDP data adjusted for calendar effects.

(6) Source: Consensus Forecasts, 8 June 2015.

(7) Forecasts for HICP.

[www.bancaditalia.it](http://www.bancaditalia.it) [Youtube.com/bancaditalia](https://www.youtube.com/bancaditalia) [Google.com/+BancaditaliaEurosistema](https://plus.google.com/+BancaditaliaEurosistema) [@UfficioStampaBI](https://twitter.com/UfficioStampaBI)

## THE ITALIAN ECONOMY IN BRIEF

DIRECTORATE GENERAL FOR ECONOMICS, STATISTICS AND RESEARCH

Via Nazionale, 91  
00184 Roma - Italia  
Tel. +390647921

Registration with the Court of Rome No. 70/2008, 26 February 2008

ISSN 2384-9134 (online)

Director: Eugenio Gaiotti