

A tail of labor supply and a tale of monetary policy

Banca D'Italia - Online

C. Cantore¹ F. Ferroni² H. Mumtaz³ A. Theophilopoulou⁴

22/03/2022

¹Bank of England and University of Surrey; ²Federal Reserve Bank of Chicago ; ³Queen Mary, University of London; ⁴Brunel University London;

The views expressed in this paper are those of the authors and are not necessarily reflective of views at the Bank of England, the Federal Reserve Bank of Chicago or the Federal Reserve System.

Roadmap

Introduction

Empirical Evidence

Theory

Conclusions

Appendix

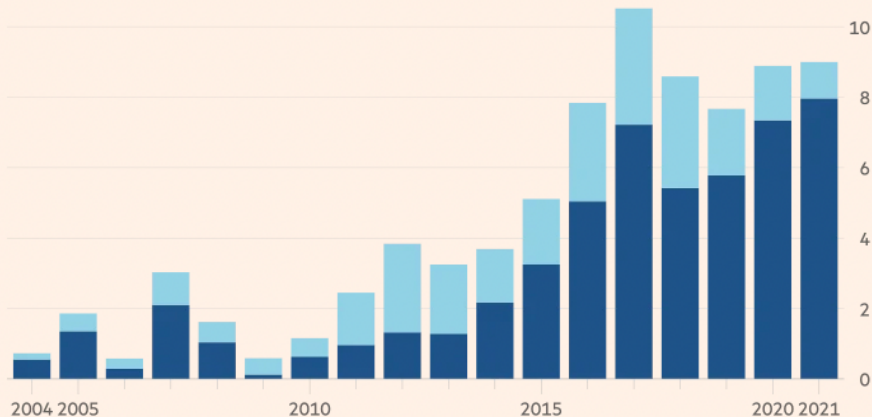
Introduction

Central bankers become increasingly 'woke' on inequality

Central bankers' speeches: per cent mentioning 'inequality' or 'distributional impact/consequences'

Advanced economies

Emerging market economies



Source: BIS

© FT

Motivation

- Relative to the inter-temporal channel (**Euler equation**), the intra-temporal allocation between consumption and leisure (**Labor Supply equation**) has received much less attention.
- We study the effect of **monetary policy** (MP) on **labor supply** decisions at the household level (HH).
- Revisit the implications of **inequality** on the effectiveness of **monetary policy**.

Preview of the results

- 1 The **left tail** of the income distribution (in US and the UK) represents a **non negligible %** of total private hours and exhibits a **strong income effect on labor supply**:
 - Conditional on keeping the job they **increase their labor supply** after an $\uparrow R$.
 - Larger elasticity of labor supply.
- 2 Two-agent New Keynesian (**TANK**) set up with **poor HtM**
 - Allow for: **IES heterogeneity** (increasing with income)
- 3 **Implications of inequality for MP effectiveness.**
 - Homogeneous IES: \uparrow inequality \Rightarrow amplifies MP.
 - **Heterogeneous IES**: \uparrow inequality \Rightarrow **dampens MP**.

- **Heterogenous effects of Monetary Policy in the data:**

- **MPC and income:** Cloyne, Ferreira, and Surico, 2020; Auclert, 2019; Andersen et al., 2020;
Holm, Paul, and Tischbirek, 2020; Amberg et al., 2021.

- **Labor mkt:** Kehoe et al., 2020; Bergman, Matsa, and Weber, 2021; Jasova et al., 2021.

- **Heterogenous effects of Monetary Policy in theory:**

- **HANK:** Athreya, Owens, and Schwartzman, 2017, McKay, Nakamura, and Steinsson, 2016, Guerrieri and Lorenzoni, 2017, Kaplan, Moll, and Violante, 2018, Auclert, 2019, Wong, 2020

- **TANK:** F. Bilbiie, 2008, Debortoli and Galí, 2017, F. Bilbiie, 2020, F. O. Bilbiie, Monacelli, and Perotti, 2013, F. Bilbiie, 2021

- **Heterogenous IES due to Income & Asset market participation:**

- Mankiw and Zeldes, 1991, Blundell, Browning, and Meghir, 1994, Attanasio and Browning, 1995, Attanasio, Banks, and Tanner, 2002, Vissing-Jørgensen, 2002, Calvet et al., 2021

- **Marginal propensity to consume/earn:**

- **MPC:** Patterson, 2021

- **MPE:** Golosov et al., 2021, Cesarini et al., 2017, Powell, 2016, Domeij and Flodén, 2006, Imbens, Rubin, and Sacerdote, 2001

- **Monetary Policy/Agg. Demand and Inequality:**

- Coibion et al., 2017, Mumtaz and Theophilopoulou, 2017, Auclert and Rognlie, 2020, Broer, Kramer, and Mitman, 2021

Poor Hand to Mouth

- Literature on **consumption heterogeneity** has stressed the importance of **borrowing constraints** and **wealthy HtM** (Kaplan, Violante, and Weidner, 2014).
- We show that focusing on **labor supply heterogeneity** puts the focus back on the **poor HtM** with preference **heterogeneity**.
- ▶ Cross-sectional variance contribution of the left tail of the earnings/income distribution:

| | Hours | Consumption | Relative |
|-----------------------|-------|-------------|----------|
| CPS bottom 20% | 24% | - | - |
| CEX bottom 25% | 18% | 12% | 1.5 |

Roadmap

Introduction

Empirical Evidence

Theory

Conclusions

Appendix

Empirical Evidence

Data

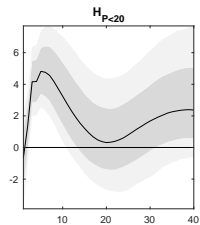
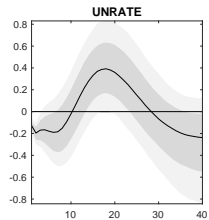
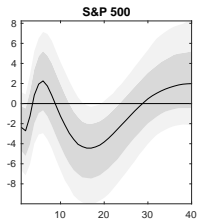
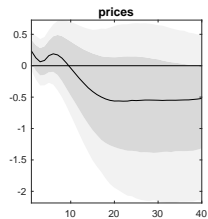
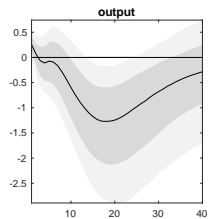
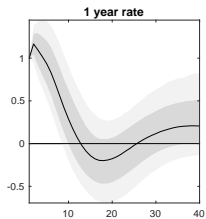
- **Individual & Household survey data** for US (CEX/CPS) and UK (FES/LFS) working age population to study decisions by percentile of gross **income/earnings**.
- Individuals/HH are assigned to each month/quarter of the year by their date of interview (see Cloyne and Surico, 2016) and sorted into multiple bins by gross earning/income.
- We look at **hours worked** and **labor income** (CEX/FES) or **hourly wages** (CPS/LFS). [▶ details](#) [▶ aggregate](#)
- Averages are computed in each of these groups using survey weights.
- Repeat this for each year in the sample to get a monthly/quarterly time-series for each group.

Empirics

- **FAVAR with IV identification** (in levels). [▶ details](#)
- X_t (Macro-Financial plus Survey): real activity, employment, inflation, money, credit, spreads and asset prices.
 - US : CEX 238 series, 1984Q1 to 2018Q4
CPS 137 series, 1994m1 to 2019m12.
 - UK : FES 75 series, 1979Q1 to 2019Q4.
LFS 103 series, 1994Q1 to 2019Q4.
- m_t (instrument): intraday variation of interest rates to MP announcements
 - US : Gertler and Karadi, 2015, Miranda-Agrippino and Ricco, 2020
 - UK : Gerko and Rey, 2017, Cesa-Bianchi, Thwaites, and Vicendoa, 2020
- Why FAVAR? structural vs idiosyncratic shocks (and ME) [De Giorgi and Gambetti, 2017].

US: CEX

▶ UK



US: Hours and Unemployment

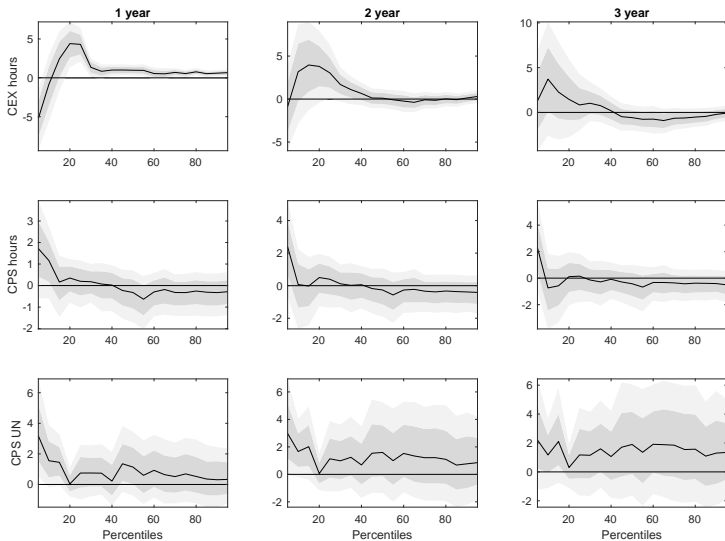
▶ CEX

▶ CPS

▶ Unempl

▶ UK

across the income/earnings distribution



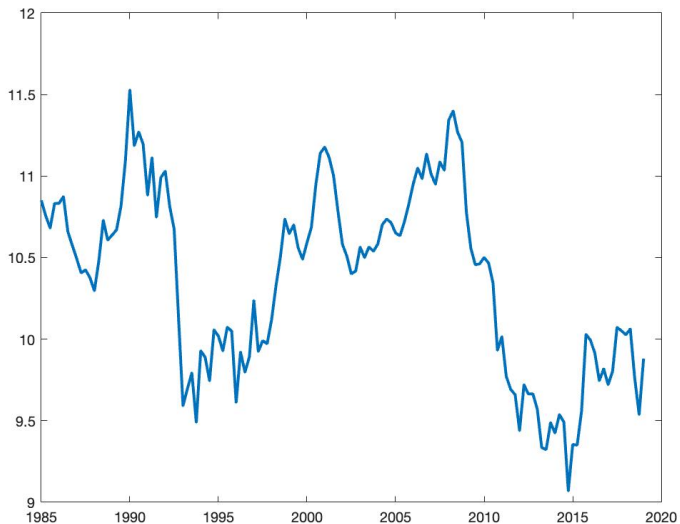
Robustness

- Alternative Monetary policy shock ▶ identification
- Response by ▶ industry
- Response by ▶ occupation
- Response by Housing ▶ tenure
- Asymmetric effects: easing vs tightening.

US: Hours proportion of the bottom 25% CEX

▶ CPS

▶ pHTM



Roadmap

Introduction

Empirical Evidence

Theory

Conclusions

Appendix

Theory

Two-agents NK (TANK) models

- Permanent Income Hypothesis: after a rate hike $\downarrow C$ & $\downarrow H$.
(**return on savings** > **return on working**)
- We need to move away from the PIH.
- TANK models where a fraction of HH cannot optimize intertemporally
 - Poor HtM with standard homogenous IES F. Bilbiie, 2008
 - Poor HtM with heterogeneous IES (Attanasio, Banks, and Tanner, 2002; Vissing-Jørgensen, 2002).
 1. IES bondholders=0.8
 2. IES non bondholders=0.1
- Key is to have **income** > **substitution effect**

Simple TANK model

F. Bilbiie, 2008, F. Bilbiie, 2020

- Discrete time, infinite horizon model;
- Real quantities are in terms of the consumption good (x_t) while nominal variables (X_t).
- Log-linear variables in deviation from their steady state (\hat{x}_t).
- The economy consists of households, firms and a central bank.
- The firm sector is standard. Only labor used in production and Rotemberg price adjustment costs. No technology shocks.
- The central bank follows a Taylor type rule to choose the *real* interest rate. Monetary policy shock.

Households

- There is a continuum of households $[0, 1]$.
- There are two types of households: A share λ of households are HtM (**H**) who work and consume all of their income.
- The remaining $1 - \lambda$ are savers (**S**) who hold bonds and shares in monopolistic firms and get firm profits.
- Both the same utility function $\left(\frac{(c_t^j - \bar{c})^{1 - \frac{1}{\sigma_j}}}{1 - \frac{1}{\sigma_j}} - \nu \frac{(H_t^j)^2}{2} \right)$ (with $j=S,H$) allowing for RA decreasing with income. [▶ non-homothetic preferences](#)
- Savers price all assets and get all returns, thus there is limited asset market participation.
- The savers problem is the one of a standard permanent income hypothesis/ricardian agent.

Log-linearized Conditions of TANK with HtM

- 1: Aggregate Condition $(1 - \lambda)\hat{H}_t^S + \lambda\hat{H}_t^H = \hat{H}_t = \hat{c}_t = (1 - \lambda)\hat{c}_t^S + \lambda\hat{c}_t^H$
- 2: Euler $\hat{c}_t^S = \hat{c}_{t+1|t}^S - \sigma_S \left(\hat{R}_t - \hat{\Pi}_{t+1|t} \right)$
- 3-4: Labor Supply $j = S, H$ $\varphi\hat{H}_t^j = \hat{w}_t - \frac{1}{\sigma_j}\hat{c}_t^j$
- 5: Budget constraint H $\hat{c}_t^H = \hat{H}_t^H + \hat{w}_t$
- 6: Phillips Curve $\hat{\Pi}_t = \beta\hat{\Pi}_{t+1|t} + \kappa\hat{w}_t$
- 7: Taylor Rule $\hat{R}_t = \hat{\Pi}_{t+1|t} + \epsilon_t^m$
-
-

Table: TANKs: S PIH Savers; H poor HtM. Symmetric steady state:

$$c^H = c^S = H^H = H^S = 1$$

Analytical results

- **Savers:** $\hat{c}_t^S = -\sigma_S \epsilon_t^m$
- **HtM:** $\hat{H}_t^H = \frac{\sigma_H - 1}{\sigma_H \varphi + 1} \hat{w}_t$; $\hat{c}_t^H = \frac{\sigma_H(\varphi + 1)}{\sigma_H \varphi + 1} \hat{w}_t$
- **Proposition:** Under SADL ($\lambda < \frac{1}{1+\varphi}$) and with a sufficiently low IES of the HtM (e.g. $\sigma_H < 1$), a rate hike induces a decline in total hours worked and an increase in the HtM labor supply.
- **Labor supply elasticities**

MP *amplification* or *dampening*?

- $\chi = \frac{\hat{c}_t^H}{\hat{y}_t}$ as the **elasticity of HtM consumption to aggregate income**.
- F. Bilbiie, 2008: $\chi > 1 \Rightarrow$ MP *amplification*. (countercyclical inequality)
- with $\sigma_H = \sigma_S \Rightarrow \chi = 1 + \varphi$. Independent of λ and IES.
- with $\sigma_H \neq \sigma_S$:

$$\chi = \frac{\frac{\sigma_H}{\sigma_S} (\varphi + 1) (\sigma_S \varphi + 1)}{\lambda \left(\frac{\sigma_H}{\sigma_S} - 1 \right) (\varphi + 1) + \sigma_H \varphi + 1}.$$

- χ increasing in λ if $\frac{\sigma_H}{\sigma_S} < 1$.

Inequality (λ) and Monetary Policy

Homogeneous IES - $\sigma_H = \sigma_S$

- χ is crucial because it affects the **slope** of the Aggregate Demand:

$$\hat{c}_t = \hat{c}_{t+1|t} - \frac{(1-\lambda)\sigma_S}{1-\chi\lambda} (\hat{R}_t - \hat{\Pi}_{t+1|t}). \quad (1)$$

- Standard Aggregate Demand Logic (SADL) ($\lambda < \frac{1}{\chi}$) = the slope of the aggregate IS curve remains negative.
- What happens when inequality (λ) increases (under SADL)?
 - Aggregate consumption $\hat{c}_t = -\sigma_S \frac{(1-\lambda)}{1-\chi\lambda} \epsilon_t^m$.
We have that $\lambda \uparrow \rightarrow |c| \uparrow$. **Monetary policy amplification**

Inequality (λ) and Monetary Policy

Heterogeneous IES - $\sigma_S \neq \sigma_H$

- Aggregate Euler equation:

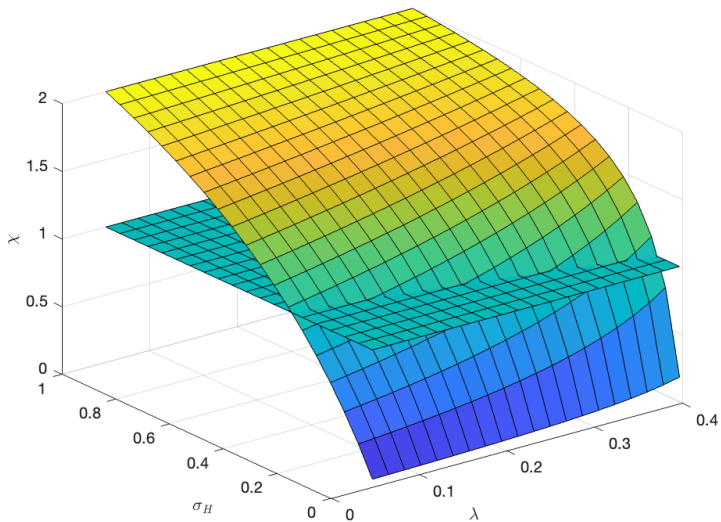
$$\hat{c}_t = \hat{c}_{t+1|t} - \underbrace{\frac{(1-\lambda)\sigma_S}{1-(1+\varphi)\lambda}}_{(+)\text{ when } \lambda \uparrow} \times \underbrace{\frac{\lambda \left(\frac{\sigma_H}{\sigma_S} - 1 \right) (\varphi + 1) + \sigma_H \varphi + 1}{\sigma_H \varphi + 1}}_{(-)\text{ when } \lambda \uparrow \text{ if } \frac{\sigma_H}{\sigma_S} < 1} \times (\hat{R}_t - \hat{\Pi}_{t+1|t}) \quad (2)$$

Heterogeneity in Marginal Rate of Substitution (MRS)

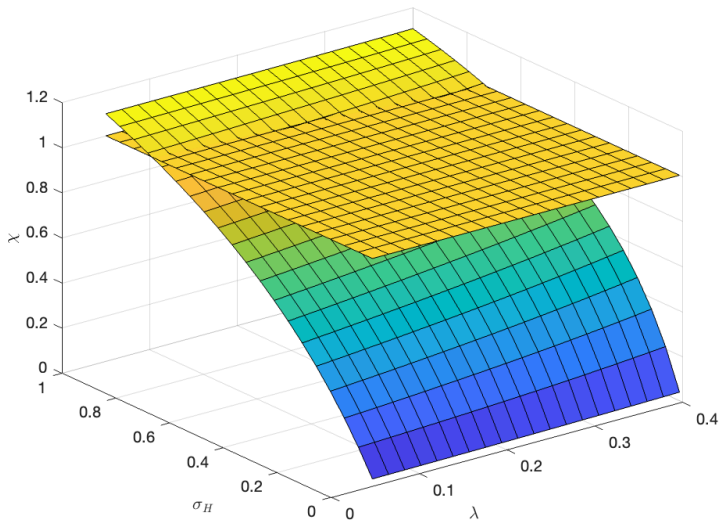
- The dampening effect is a consequence of the **heterogeneity in the MRS** between hours and consumption.
- With **homogenous preferences** individual and aggregate MRS move in the same proportion $\varphi \hat{H}_t + \frac{\hat{c}_t}{\sigma_S} = \hat{w}_t$.
- With heterogeneous preference this is no longer true:

$$\left(\varphi \hat{H}_t + \frac{\hat{c}_t}{\sigma_S} \right) + \underbrace{\lambda \left(1 - \frac{\sigma_H}{\sigma_S} \right) \frac{\hat{c}_t^H}{\sigma_H}}_{\downarrow \text{ when } \lambda \uparrow \& \frac{\sigma_H}{\sigma_S} < 1} = \hat{w}_t$$

- IES heterogeneity makes the sign of the slope of the Euler equation depend on λ even if we restrict our attention to the SADL region.

χ 

χ - Sticky Wages



Medium Scale TANK

F. Bilbiie, 2008 meets Christiano, Eichenbaum, and Evans, 2005

- Consumption & hours inequality in steady state.
- Capital + Investment adjustment costs.
- Sticky wages.
- Taylor rule with contemporaneous inflation + smoothing.
- **Calibration** : $\sigma_H = 0.1$ and $\sigma_S = 0.80$ (Vissing-Jørgensen, 2002)
 $\Rightarrow \chi = 0.5$.

Inequality and Monetary Policy

Dampening

- Changes in the effect of monetary policy tightening when λ increases from 10 to 11%:

| | Output | Consumption | Agg. Hours | Inflation |
|---------------|---------------|--------------------|-------------------|------------------|
| Impact | -0.54% | -0.56% | -0.54% | 0.16% |
| 1 year | -3.17% | -4.22% | -3.25% | 0.99% |
| 2 year | -45.95% | -6.23% | -17.86% | 2.95% |

Roadmap

Introduction

Empirical Evidence

Theory

Conclusions

Appendix

Conclusions

- We study the effect of monetary policy on labor supply.
- Using **survey data** and a **FAVAR** we find that in US and in the UK this response is **heterogeneous**.
- While aggregate hours decline, **labor supply of poor household increases** (conditionally on keeping the job).
- We rationalize this result allowing for **IES heterogeneity** in a two-agents New-Keynesian model set up and revisit the implications of inequality on the effectiveness of monetary policy.
- When IES are heterogeneous **higher inequality dampens the aggregate effects of monetary policy**.

References I

Amberg, Niklas et al. (Jan. 2021). *The Heterogeneous Effects of Monetary Policy Shocks: Microeconomic Evidence*. Mimeo.

Andersen, Asger Lau et al. (Dec. 2020). *Monetary policy and inequality*. Economics Working Papers 1761. Department of Economics and Business, Universitat Pompeu Fabra. URL:

<https://ideas.repec.org/p/upf/upfgen/1761.html>.

Athreya, Kartik, Andrew Owens, and Felipe Schwartzman (2017). "Does redistribution increase output? The centrality of labor supply". *Quantitative Economics* 8.3, pp. 761–808. DOI: <https://doi.org/10.3982/QE578>. eprint: <https://onlinelibrary.wiley.com/doi/pdf/10.3982/QE578>. URL: <https://onlinelibrary.wiley.com/doi/abs/10.3982/QE578>.

References II

- Attanasio, Orazio, James Banks, and Sarah Tanner (Aug. 2002). "Asset Holding and Consumption Volatility". *Journal of Political Economy* 110.4, pp. 771–792. DOI: [10.1086/340774](https://doi.org/10.1086/340774). URL: <https://ideas.repec.org/a/ucp/jpolec/v110y2002i4p771-792.html>.
- Attanasio, Orazio and Martin Browning (Dec. 1995). "Consumption over the Life Cycle and over the Business Cycle". *American Economic Review* 85.5, pp. 1118–1137. URL: <https://ideas.repec.org/a/aea/aecrev/v85y1995i5p1118-37.html>.
- Auclert, Adrien (June 2019). "Monetary Policy and the Redistribution Channel". *American Economic Review* 109.6, pp. 2333–2367.
- Auclert, Adrien and Matthew Rognlie (2020). *Inequality and Aggregate Demand*. en. Tech. rep. Mimeo, p. 82.

References III

- Bahaj, Saleem (2020). "Sovereign spreads in the Euro area: Cross border transmission and macroeconomic implications". *Journal of Monetary Economics* 110, pp. 116–135. ISSN: 0304-3932.
- Bai, Jushan and Serena Ng (Jan. 2002). "Determining the Number of Factors in Approximate Factor Models". *Econometrica* 70.1, pp. 191–221.
- Bayer, Christian, Benjamin Born, and Ralph Luetticke (2020). "Shocks, Frictions, and Inequality in US Business Cycles". en. *SSRN Electronic Journal*. ISSN: 1556-5068. DOI: [10.2139/ssrn.3536730](https://doi.org/10.2139/ssrn.3536730). URL: <https://www.ssrn.com/abstract=3536730> (visited on 12/06/2021).
- Bergman, Nittai, David Matsa, and Michael Weber (2021). *Heterogeneous Labor Market Effects of Monetary Policy Heterogeneous Labor Market Effects of Monetary Policy* *. Chicago Booth WP no 21-02. URL: <http://ssrn.com/abstract=3757645> [Electronic copy available at: https://ssrn.com/abstract=3757645](https://ssrn.com/abstract=3757645).

References IV

- Bilbiie, Florin (May 2008). “Limited Asset Markets Participation, Monetary Policy and (Inverted) Aggregate Demand Logic”. *Journal of Economic Theory* 140.1, pp. 162–196.
- (2020). “The New Keynesian cross”. *Journal of Monetary Economics* 114, pp. 90–108. ISSN: 0304-3932. DOI: <https://doi.org/10.1016/j.jmoneco.2019.03.003>. URL: <https://www.sciencedirect.com/science/article/pii/S0304393219300492>.
- (Jan. 2021). *Monetary Policy and Heterogeneity: An Analytical Framework*. Mimeo.
- Bilbiie, Florin O., Tommaso Monacelli, and Roberto Perotti (2013). “Public Debt and Redistribution with Borrowing Constraints”. *The Economic Journal* 123.566, F64–F98. DOI: [10.1111/eoj.12012](https://doi.org/10.1111/eoj.12012).

References V

- Blundell, Richard, Martin Browning, and Costas Meghir (1994). "Consumer Demand and the Life-Cycle Allocation of Household Expenditures". *The Review of Economic Studies* 61.1, pp. 57–80. ISSN: 00346527, 1467937X. URL: <http://www.jstor.org/stable/2297877>.
- Broer, Tobias, John Kramer, and Kurt Mitman (2021). *The Curious Incidence of Monetary Policy Shocks Across the Income Distribution*. Mimeo.
- Calvet, Laurent E et al. (2021). *The Cross-Section of Household Preferences*. Tech. rep. National Bureau of Economic Research.
- Cesa-Bianchi, Ambrogio, Gregory Thwaites, and Alejandro Vicondoa (2020). "Monetary policy transmission in the United Kingdom: A high frequency identification approach". *European Economic Review* 123, p. 103375. ISSN: 0014-2921.

References VI

- Cesarini, David et al. (Dec. 2017). "The Effect of Wealth on Individual and Household Labor Supply: Evidence from Swedish Lotteries". *American Economic Review* 107.12, pp. 3917–46. DOI: [10.1257/aer.20151589](https://doi.org/10.1257/aer.20151589). URL: <https://www.aeaweb.org/articles?id=10.1257/aer.20151589>.
- Chetty, Raj et al. (May 2011). "Are Micro and Macro Labor Supply Elasticities Consistent? A Review of Evidence on the Intensive and Extensive Margins". *American Economic Review* 101.3, pp. 471–75. DOI: [10.1257/aer.101.3.471](https://doi.org/10.1257/aer.101.3.471). URL: <https://www.aeaweb.org/articles?id=10.1257/aer.101.3.471>.
- Christiano, Lawrence J., Martin Eichenbaum, and Charles L. Evans (Feb. 2005). "Nominal Rigidities and the Dynamic Effects of a Shock to Monetary Policy". *Journal of Political Economy* 113.1, pp. 1–45. DOI: [10.1086/426038](https://doi.org/10.1086/426038). URL: <https://ideas.repec.org/a/ucp/jpolec/v113y2005i1p1-45.html>.

References VII

- Cloyne, Clodomiro Ferreira, and Paolo Surico (2020). "Monetary Policy when Households have Debt: New Evidence on the Transmission Mechanism". *Review of Economic Studies* 87.1, pp. 102–129.
- Cloyne and Paolo Surico (May 2016). "Household Debt and the Dynamic Effects of Income Tax Changes". *The Review of Economic Studies* 84.1, pp. 45–81.
- Coibion, Olivier et al. (2017). "Innocent Bystanders? Monetary policy and inequality". *Journal of Monetary Economics* 88.C, pp. 70–89. DOI: [10.1016/j.jmoneco.2017.05](https://ideas.repec.org/a/eee/moneco/v88y2017icp70-89.html). URL: <https://ideas.repec.org/a/eee/moneco/v88y2017icp70-89.html>.
- De Giorgi, Giacomo and Luca Gambetti (2017). "Business cycle fluctuations and the distribution of consumption". *Review of Economic Dynamics* 23, pp. 19–41. ISSN: 1094-2025.

References VIII

- Debortoli, Davide and Jordi Galí (Sept. 2017). *Monetary policy with heterogeneous agents: Insights from TANK models*. Economics Working Papers 1686. Department of Economics and Business, Universitat Pompeu Fabra.
- Domeij, David and Martin Flodén (Apr. 2006). "The labor-supply elasticity and borrowing constraints: Why estimates are biased". en. *Review of Economic Dynamics* 9.2, pp. 242–262. ISSN: 10942025. DOI: [10.1016/j.red.2005.11.001](https://doi.org/10.1016/j.red.2005.11.001). URL: <https://linkinghub.elsevier.com/retrieve/pii/S1094202505000748> (visited on 03/24/2021).

References IX

- Gerko, Elena and Hélène Rey (Aug. 2017). "Monetary Policy in the Capitals of Capital". *Journal of the European Economic Association* 15.4, pp. 721–745. ISSN: 1542-4766. DOI: [10.1093/jeea/jvx022](https://doi.org/10.1093/jeea/jvx022). eprint: <https://academic.oup.com/jeea/article-pdf/15/4/721/19518111/jvx022.pdf>. URL: <https://doi.org/10.1093/jeea/jvx022>.
- Gertler, Mark and Peter Karadi (Jan. 2015). "Monetary Policy Surprises, Credit Costs, and Economic Activity". *American Economic Journal: Macroeconomics* 7.1, pp. 44–76. DOI: [10.1257/mac.20130329](https://doi.org/10.1257/mac.20130329).
- Golosov, Mikhail et al. (2021). "How Americans Respond to Idiosyncratic and Exogenous Changes in Household Wealth and Unearned Income". en, p. 132.

References X

- Guerrieri, Veronica and Guido Lorenzoni (2017). “Credit Crises, Precautionary Savings, and the Liquidity Trap”. *The Quarterly Journal of Economics* 132.3, pp. 1427–1467. URL: <https://ideas.repec.org/a/oup/qjecon/v132y2017i3p1427-1467..html>.
- Holm, Martin, Pascal Paul, and Andreas Tischbirek (Jan. 2020). *The Transmission of Monetary Policy under the Microscope*. Working Paper Series 2020-03. Federal Reserve Bank of San Francisco.
- Imbens, Guido W., Donald B. Rubin, and Bruce I. Sacerdote (Sept. 2001). “Estimating the Effect of Unearned Income on Labor Earnings, Savings, and Consumption: Evidence from a Survey of Lottery Players”. *American Economic Review* 91.4, pp. 778–794. DOI: [10.1257/aer.91.4.778](https://doi.org/10.1257/aer.91.4.778). URL: <https://www.aeaweb.org/articles?id=10.1257/aer.91.4.778>.

References XI

- Jasova, Martina et al. (2021). *Monetary Policy, Labor Income Redistribution and the Credit Channel: Evidence from Matched Employer-Employee and Credit Registers*. en. Tech. rep. Mimeo.
- Kaplan, Greg, Benjamin Moll, and Giovanni L. Violante (Mar. 2018). “Monetary Policy According to HANK”. *American Economic Review* 108.3, pp. 697–743. DOI: [10.1257/aer.20160042](https://doi.org/10.1257/aer.20160042).
- Kaplan, Greg, Giovanni L. Violante, and Justin Weidner (2014). “The Wealthy Hand-to-Mouth”. *Brookings Papers on Economic Activity* 45.1 (Spring, pp. 77–153. URL: <https://ideas.repec.org/a/bin/bpeajo/v45y2014i2014-01p77-153.html>.
- Kehoe, Patrick J. et al. (Jan. 2020). *The Dynamic Effects of Monetary Policy With Heterogeneous Agents*. Mimeo.

References XII

- Mankiw, N.Gregory and Stephen P. Zeldes (1991). "The consumption of stockholders and nonstockholders". *Journal of Financial Economics* 29.1, pp. 97–112. ISSN: 0304-405X. DOI: [https://doi.org/10.1016/0304-405X\(91\)90015-C](https://doi.org/10.1016/0304-405X(91)90015-C). URL: <https://www.sciencedirect.com/science/article/pii/0304405X9190015C>.
- McKay, Alisdair, Emi Nakamura, and Jon Steinsson (Oct. 2016). "The Power of Forward Guidance Revisited". *American Economic Review* 106.10, pp. 3133–58. DOI: [10.1257/aer.20150063](https://doi.org/10.1257/aer.20150063).
- Mertens, Karel and Morten O. Ravn (June 2013). "The Dynamic Effects of Personal and Corporate Income Tax Changes in the United States". *American Economic Review* 103.4, pp. 1212–47.
- Miranda-Agrippino, Silvia and Giovanni Ricco (2020). "The Transmission of Monetary Policy Shocks". *American Economic Journal: Macroeconomics* forthcoming.

References XIII

- Mumtaz, Haroon and Angeliki Theophilopoulou (2017). "The impact of monetary policy on inequality in the UK. An empirical analysis". *European Economic Review* 98.C, pp. 410–423.
- Patterson, Christina (2021). *The Matching Multiplier and the Amplification of Recessions*. en. Mimeo.
- Powell, David (2016). "Does Labor Supply Respond to Transitory Income? Evidence from the Economic Stimulus Payments of 2008". *Proceedings. Annual Conference on Taxation and Minutes of the Annual Meeting of the National Tax Association* 109, pp. 1–59. ISSN: 15497542, 23775661. URL: <https://www.jstor.org/stable/26816579>.
- Smets, Frank and Rafael Wouters (2017). "Shocks and Frictions in US Business Cycles: A Bayesian DSGE Approach". (). (Visited on 07/01/2017).
- Stock, James H. and Mark W. Watson (2008). *What's New in Econometrics-Time Series*. Lecture 7. National Bureau of Economic Research, Inc.

References XIV

- Vissing-Jørgensen, Annette (Aug. 2002). "Limited Asset Market Participation and the Elasticity of Intertemporal Substitution". en. *Journal of Political Economy* 110.4, pp. 825–853. ISSN: 0022-3808, 1537-534X. DOI: [10.1086/340782](https://doi.org/10.1086/340782). URL: <https://www.journals.uchicago.edu/doi/10.1086/340782> (visited on 06/10/2021).
- Wong, Arlene (Jan. 2020). *Refinancing and the Transmission of Monetary Policy to Consumption*. Mimeo.

Roadmap

Introduction

Empirical Evidence

Theory

Conclusions

Appendix

Appendix

Cross sectional variance

▶ return

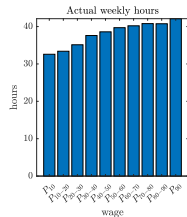
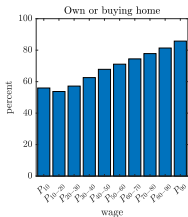
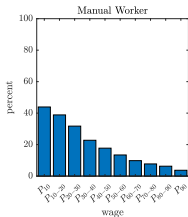
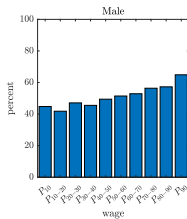
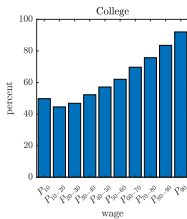
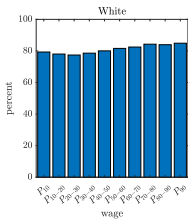
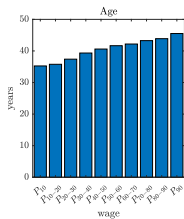
- $$\underbrace{\Gamma}_{\text{Total variance}} = \underbrace{\Gamma^G}_{\text{Between Groups}} + \underbrace{\Gamma^1}_{\text{Group1}} + \dots + \underbrace{\Gamma^T}_{\text{GroupT}}$$
- We are interested in $\frac{\Gamma^1}{\Gamma}$.
 - $\Gamma = \sum_{i=1}^N (h(i) - \bar{h})^2$
 - $\Gamma^1 = \sum_{i=1}^{N^1} (h^1(i) - \bar{h}^1)^2$
 - \bar{h} is the mean across all individuals,
 - \bar{h}^1 is the mean across individuals that belongs to group 1,
 - $h^1(i)$ from $i = 1, \dots, N^1$ people in group 1.

Hours and Wage data

US CPS

- We use actual hours worked in the main job (**AHRSWORK1**) as our main measure of weekly hours.
- Our measure of hourly earnings is constructed by using the variable **HOURWAGE**, the amount earned per hour in current job reported by respondents who are paid hourly.
 - For respondents that are paid weekly, we construct earnings by dividing the variable **EARNWEEK** (usual weekly earnings) by **UHRSWORK1** (usual weekly hours in main job).
- We drop respondents that lie in the top and bottom percentile of the earnings distribution or are aged less than 18 or more than 66.

[▶ return](#)

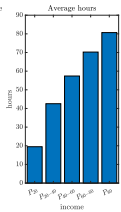
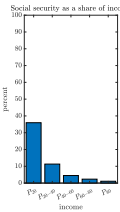
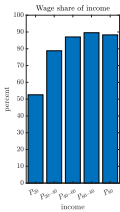
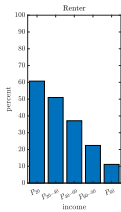
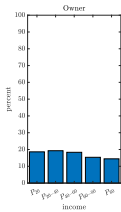
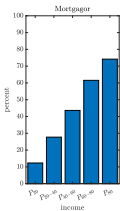
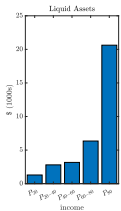
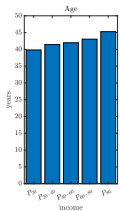
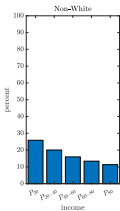
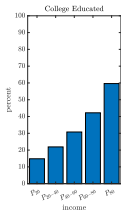
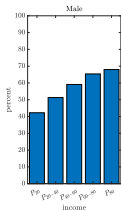


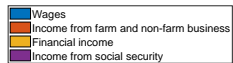
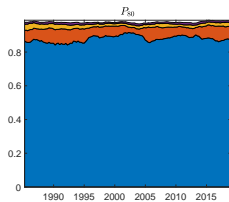
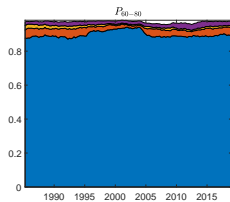
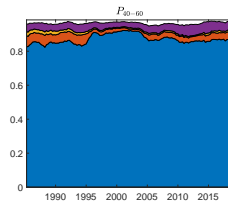
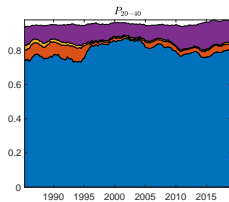
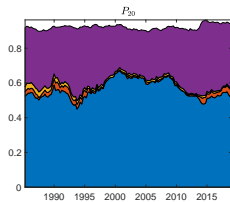
Hours and earnings data

[▶ return](#)

US CEX

- We decompose income into the following categories:
 1. **Labor Income.**
 2. **Ambiguous Income:** Amount of income or loss from non-farm business + Amount of income or loss from farm business.
 3. **Social Security:** Amount of Social Security and Railroad Retirement income + Unemployment Compensations + Workers Compensation and veterans' payments + public assistance or welfare including job grants plus food stamps.
 4. **Financial Income:** Interest on saving or bonds + Amount of regular income from dividends royalties, estates, or trusts + Amount of income from pensions or annuities from private companies + Amount of net income or loss from roomers or boarders + Amount of net income or loss from other rental units.



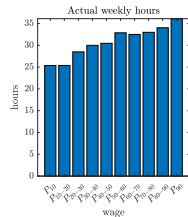
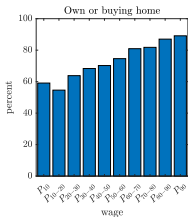
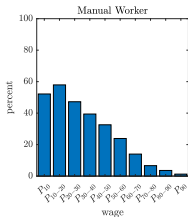
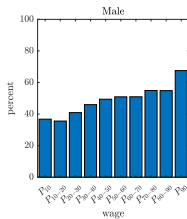
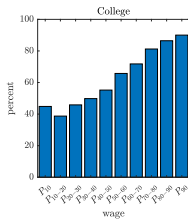
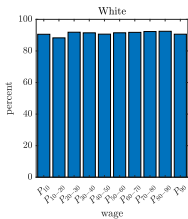
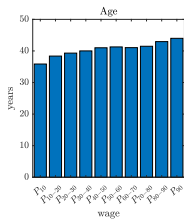


Hours and Wage data

UK LFS

- We use actual hours worked for each individual (TTACHR).
- Our measure of hourly earnings is the variable HOURPAY.
- We drop respondents that lie in the top and bottom percentile of the earnings distribution or are aged less than 18 or more than 66.

▶ [return](#)

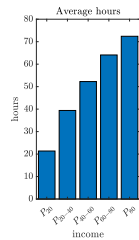
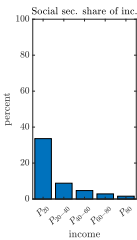
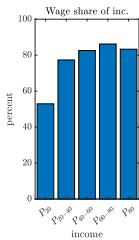
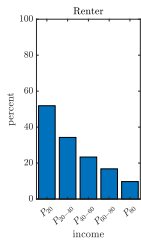
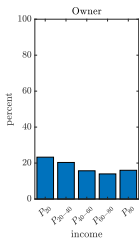
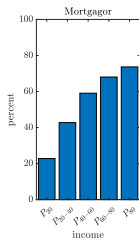
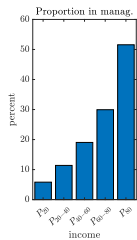
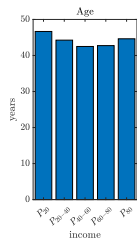
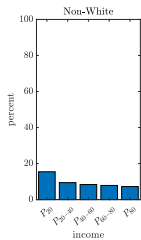
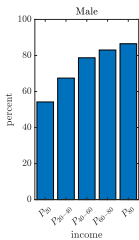


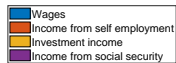
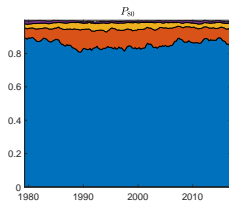
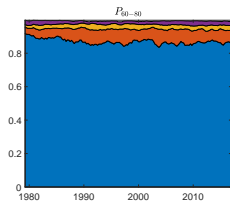
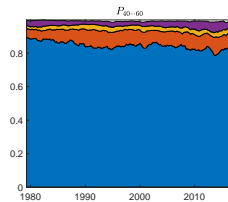
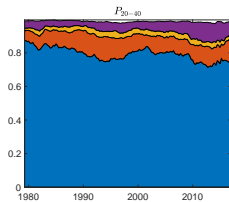
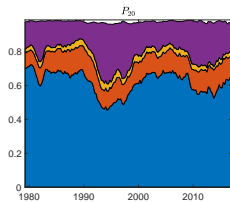
Hours and earnings data

[▶ return](#)

UK FES

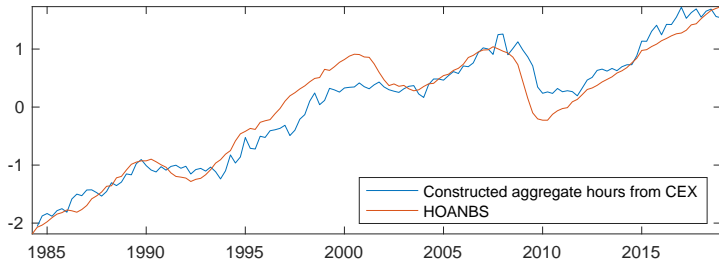
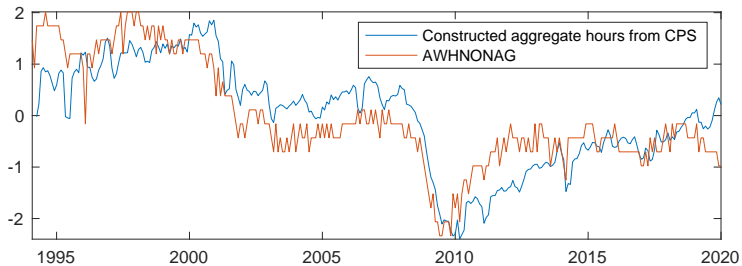
- We decompose income into the following categories:
 1. **Labor Income.**
 2. **Ambiguous Income:** wage from subsidiary employment plus income subsidiary self-employment plus income from self-employment.
 3. **Social Security.**
 4. **Financial Income:** income from investment and income from pensions annuities.





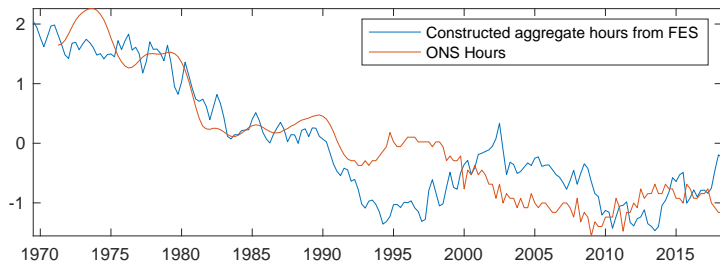
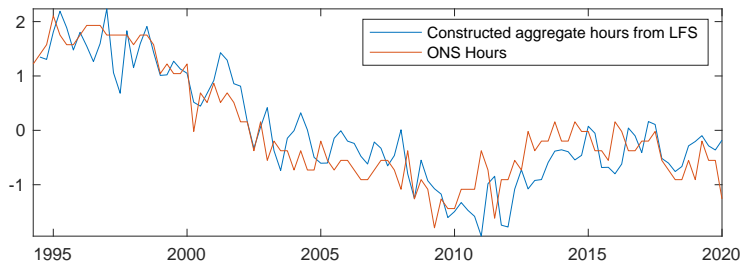
Comparison with aggregate data US

[▶ return](#)



Comparison with aggregate data UK

[▶ return](#)



Empirical Model

▶ return

- We estimate a Factor Augmented VAR (FAVAR) in the US and in the UK in **levels**

$$Y_t = \begin{pmatrix} R_t \\ F_t \end{pmatrix} = c + \sum_{j=1}^P B_j Y_{t-j} + u_t \quad (3)$$

$$X_t = \beta_0 + \beta_1 \tau + \Lambda F_t + \xi_t \quad (4)$$

R_t denotes the interest rate, X_t contains **many** times series including surveys and \hat{F}_t represent factors that summarize this information.

- Reduced form u_t are related to structural macro shocks ε_t via

$$u_t = A_0 \varepsilon_t$$

- Why a FAVAR?

Empirical Model

▶ return

- m_t observed proxy of monetary policy *surprise*. [Stock and Watson, 2008 and Mertens and Ravn, 2013]
- Relevance and exogeneity conditions

$$E(m_t \varepsilon_t') = [\alpha \ 0]$$

$$E(m_t u_t') = [\alpha \ 0] A_0' = b$$

- The latter parametrized and stacked with the FAVAR equations

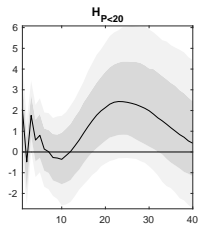
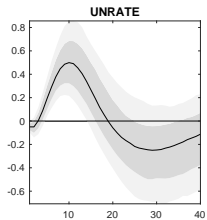
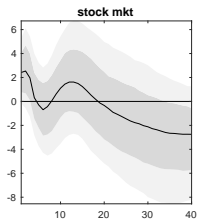
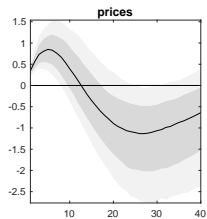
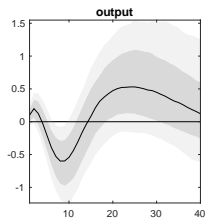
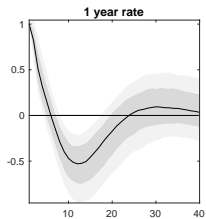
$$m_t = b u_t + v_t \tag{5}$$

- the correlation is not spurious if u_t and m_t are unpredictable based on $t - 1$ info set. With small scale VARs, u_t might be predictable

- The number of factors in the FAVAR model for the US are chosen via the information criteria of Bai and Ng, 2002.
- The PC_P criteria suggest the presence of 11 factors for the US.
- The number of factors for the UK FAVAR are also set to 11. (PC_P suggests 10 but IRFs not consistent with theory: large price puzzle)
- The lag length is set to 2.
- The parameters of the VAR model and the instrument equation are estimated using the Gibbs sampling algorithm introduced by Bahaj, 2020.

UK: FES

▶ return



UK: Hours and Unemployment

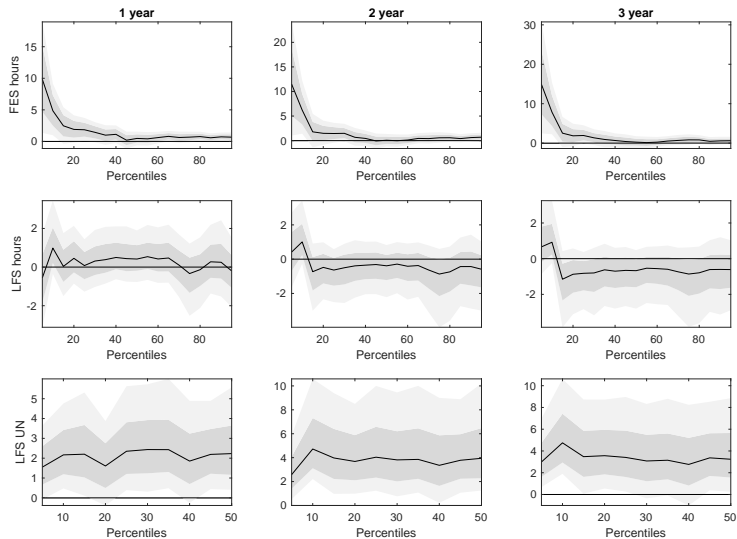
across the income/earnings distribution

▶ FES

▶ LFS

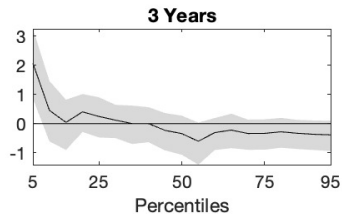
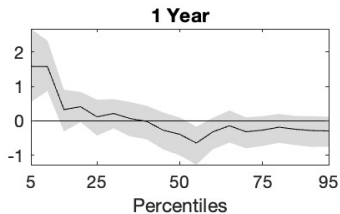
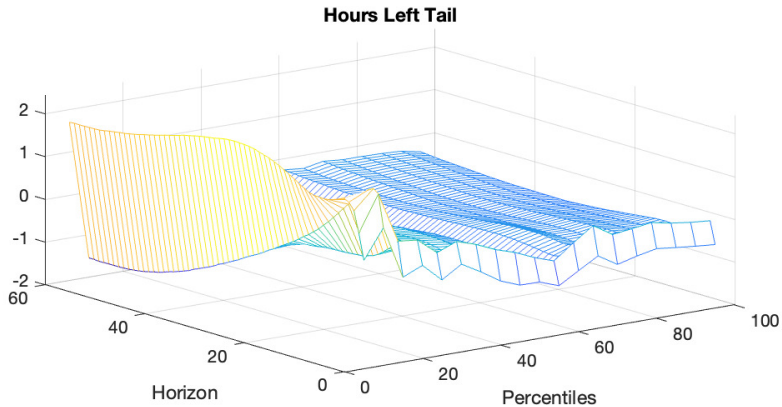
▶ Unempl

▶ return



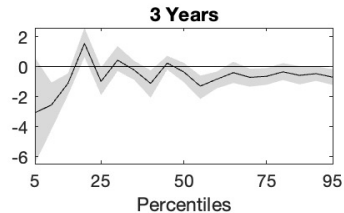
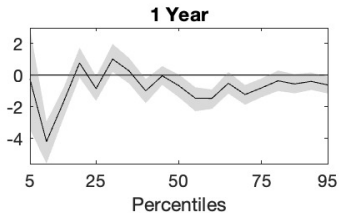
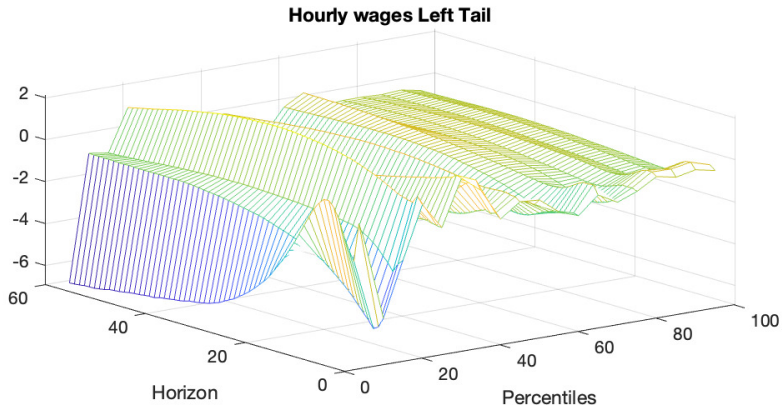
US: 3D Hours of the left tail - CPS

[▶ return](#)



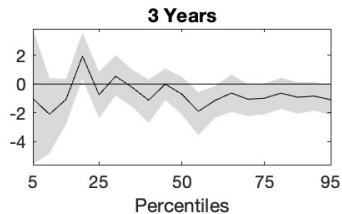
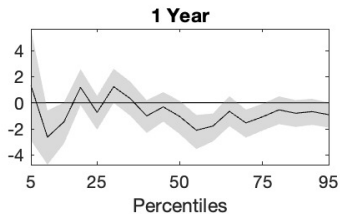
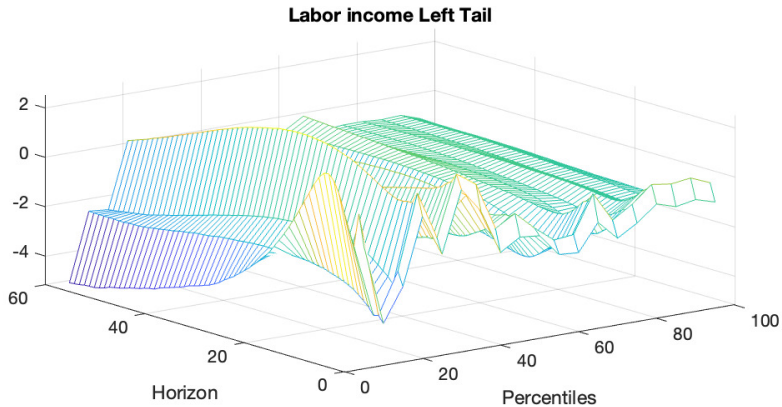
US: 3D Wages of the left tail - CPS

[▶ return](#)



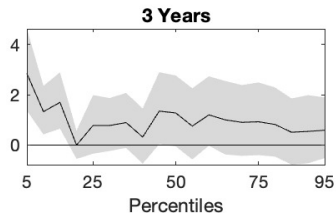
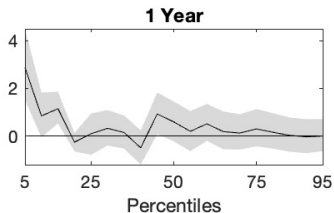
US: 3D Labor income of the left tail - CPS

[▶ return](#)



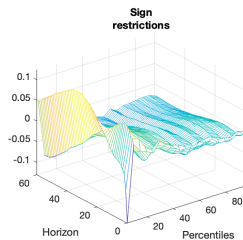
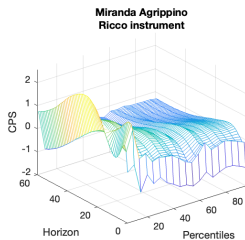
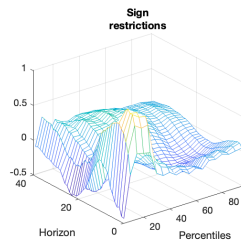
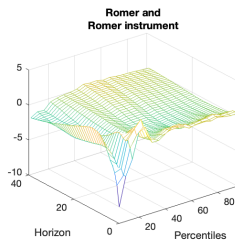
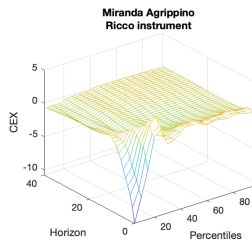
US: 3D Unemployment of the left tail - CPS

▶ return



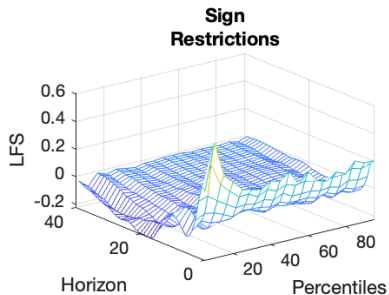
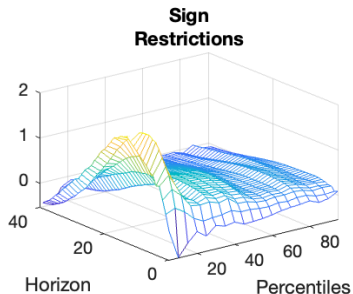
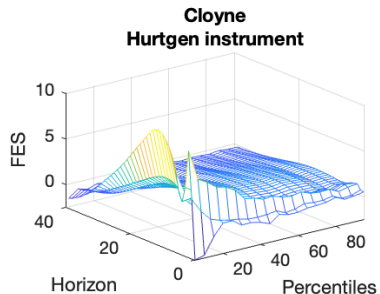
US: Robustness

▶ return



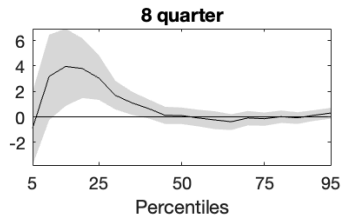
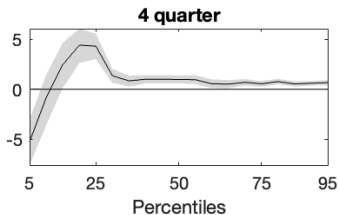
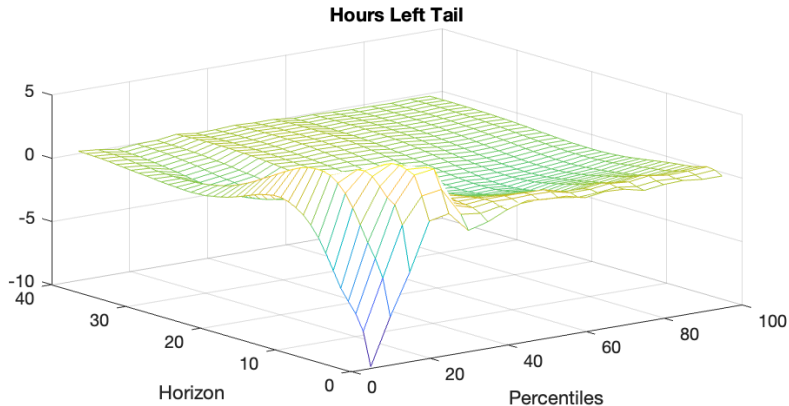
UK: Robustness

▶ return



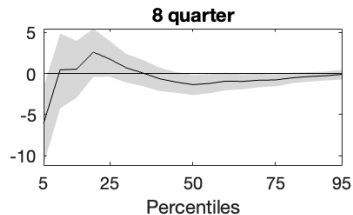
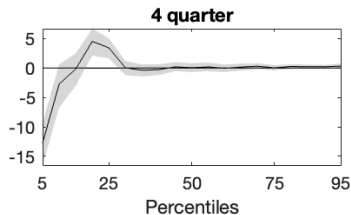
US: 3D Hours of the left tail - CEX

[▶ return](#)



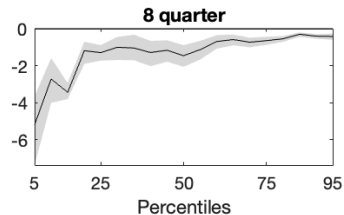
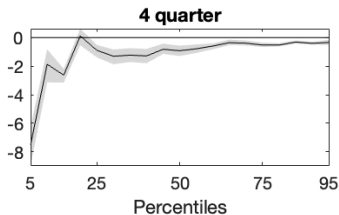
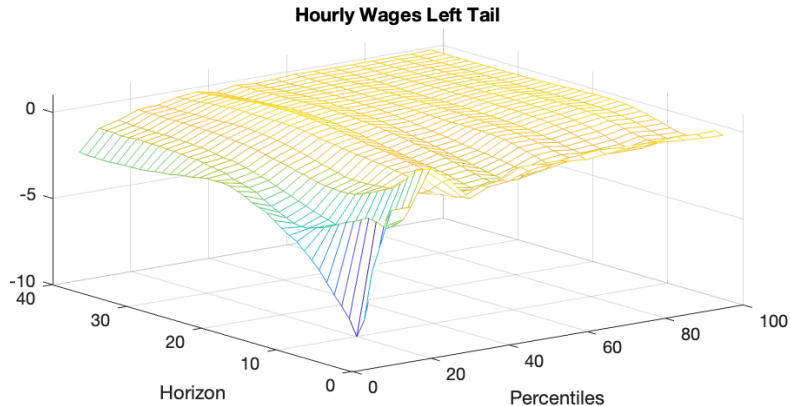
US: 3D Labor income of the left tail - CEX

[▶ return](#)



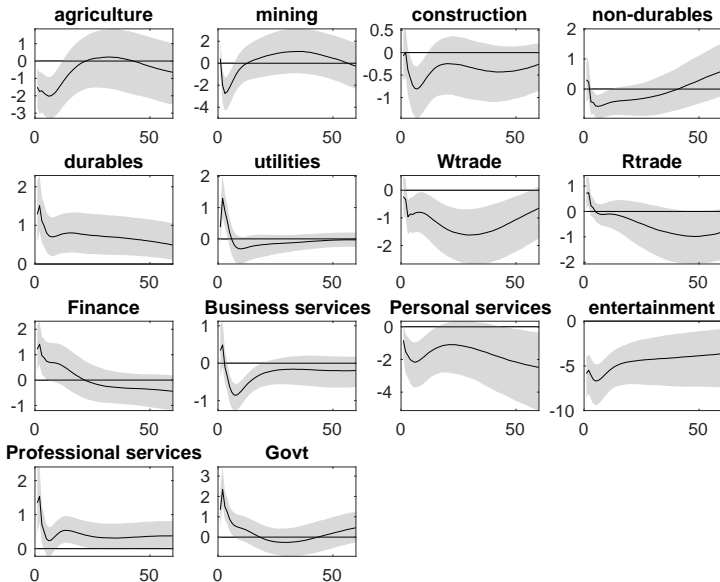
US: 3D Hourly wage of the left tail - CEX

[▶ return](#)



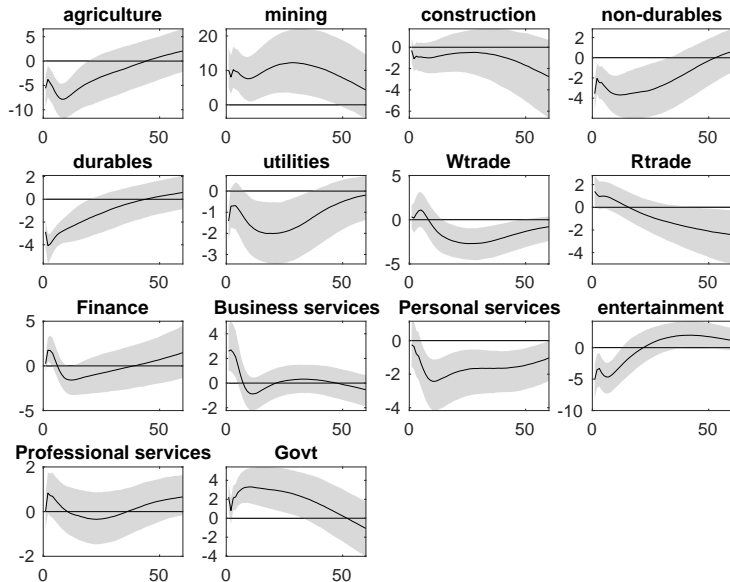
US: (CPS) Results by industry (Hours)

[▶ return](#)



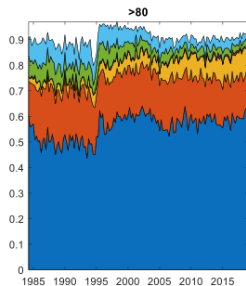
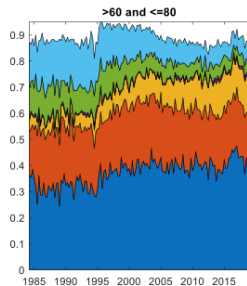
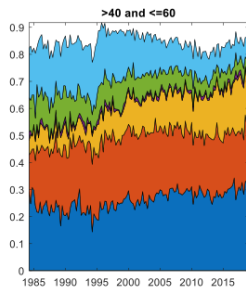
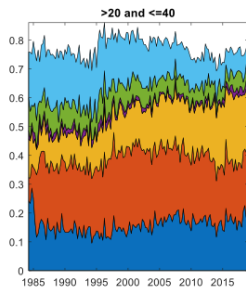
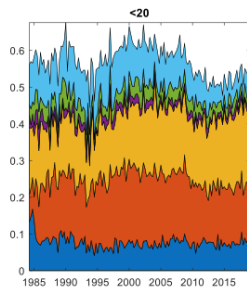
US: (CPS) Results by industry (Wages)

[▶ return](#)



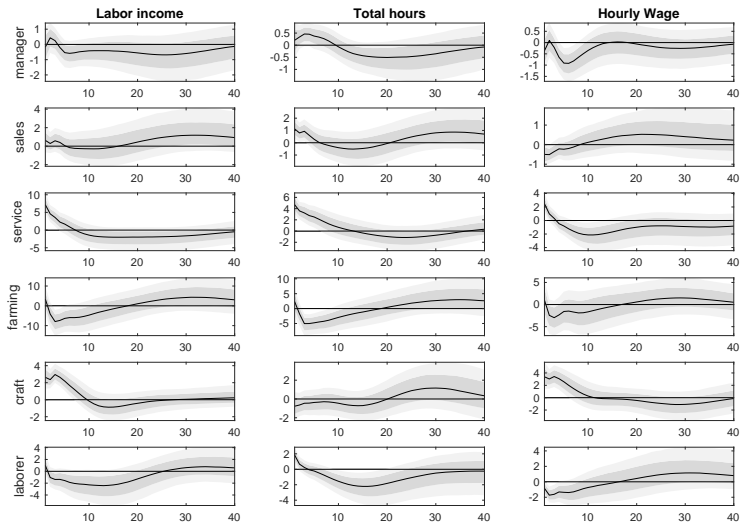
US: (CEX) Results by occupation

[▶ return](#)



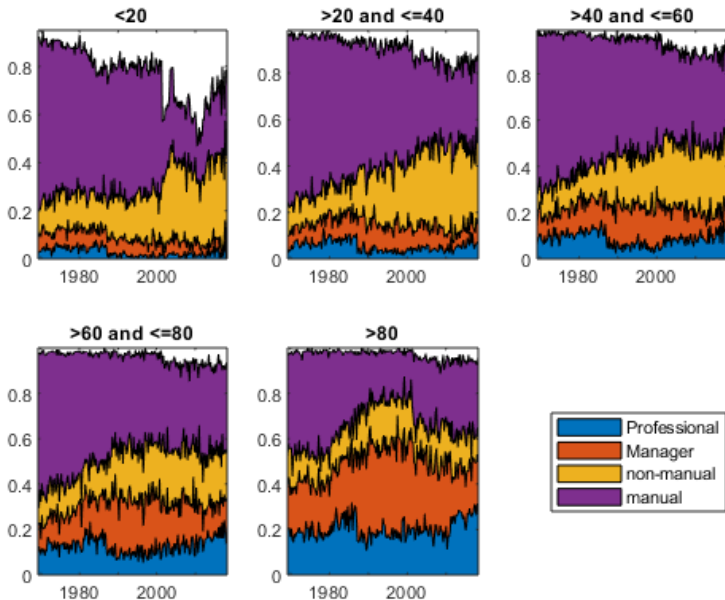
US: (CEX) Results by occupation

[▶ return](#)



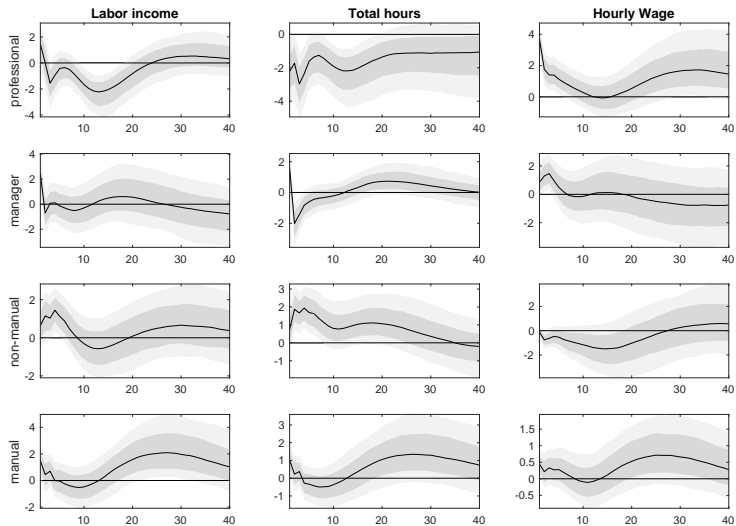
UK: (FES) Results by occupation

[▶ return](#)



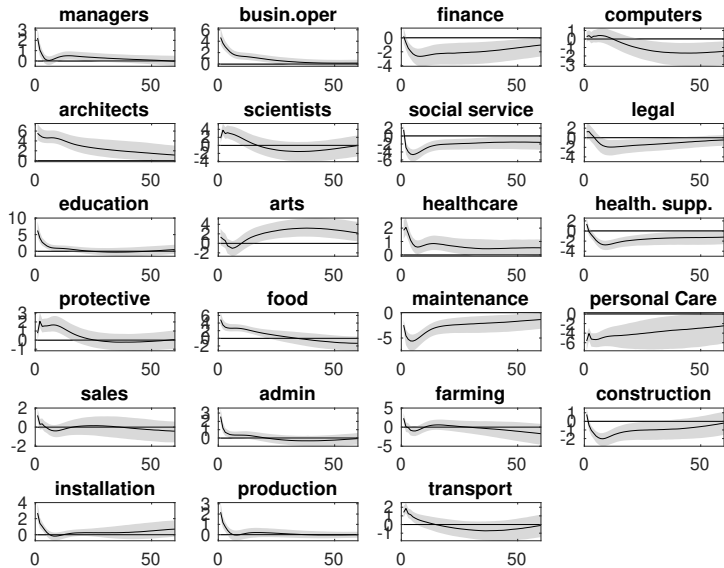
UK: (FES) Results by occupation

[▶ return](#)



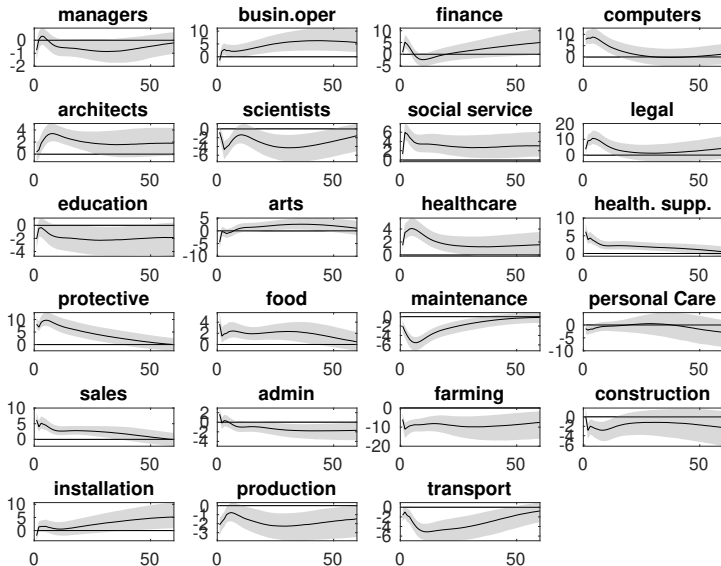
US: (CPS) Hours by occupation

[▶ return](#)



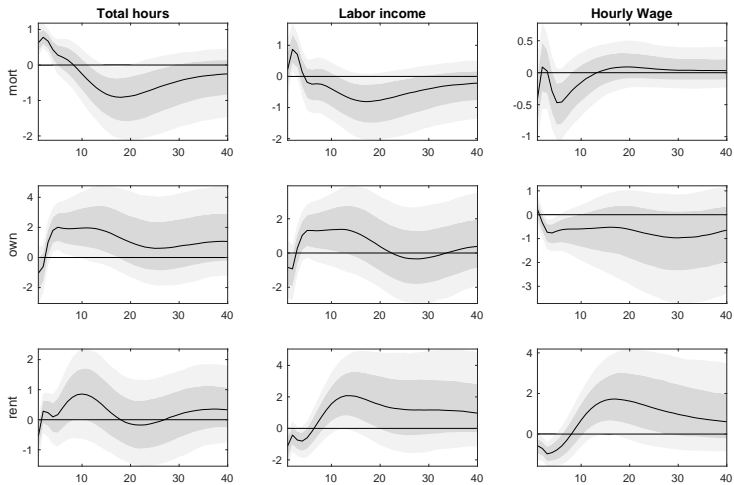
US: (CPS) Hourly wages by occupation

[▶ return](#)



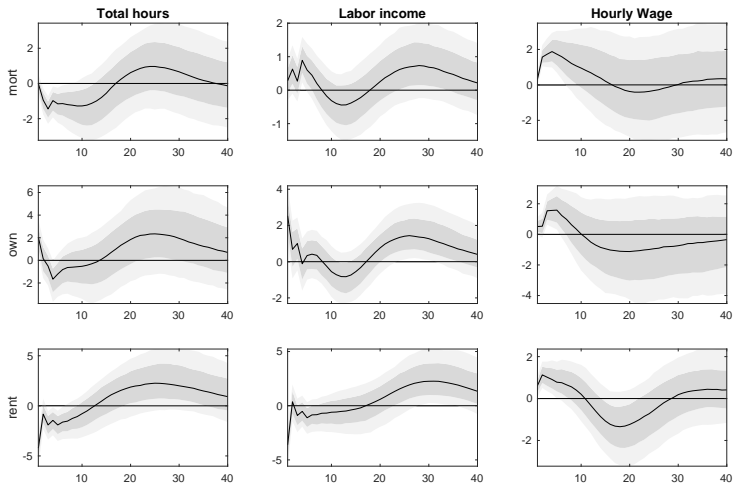
US: (CEX) Results by housing tenure

[▶ return](#)



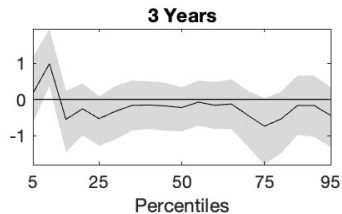
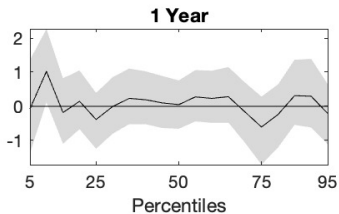
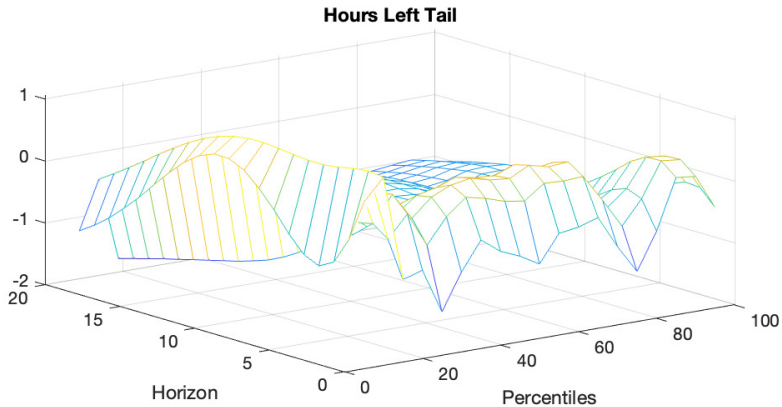
UK: (FES) Results by housing tenure

[▶ return](#)



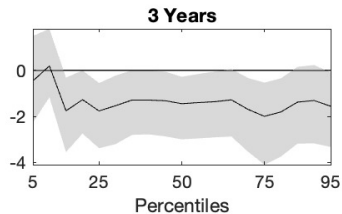
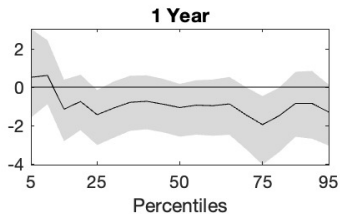
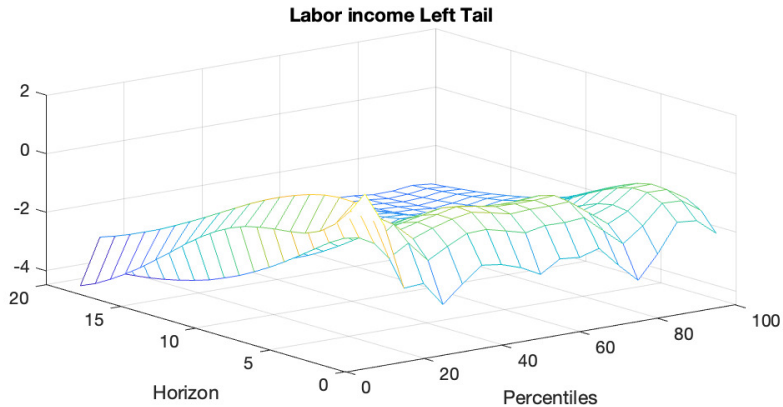
UK: 3D Hours of the left tail - LFS

[▶ return](#)



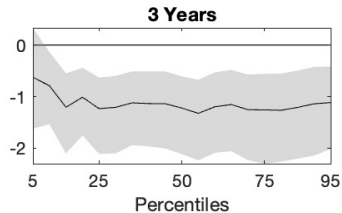
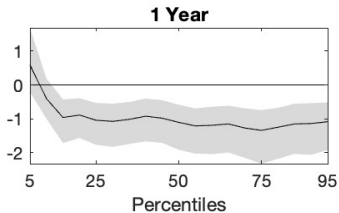
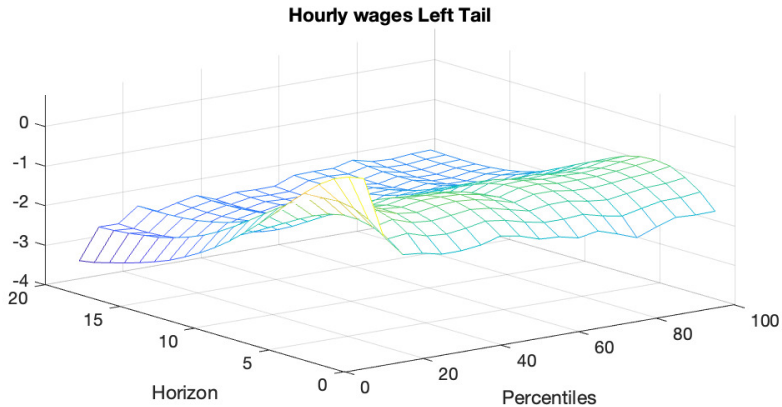
UK: 3D Labor income of the left tail - LFS

[▶ return](#)



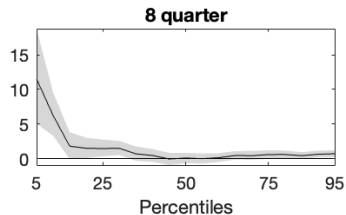
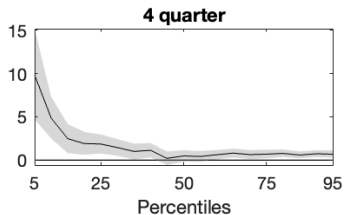
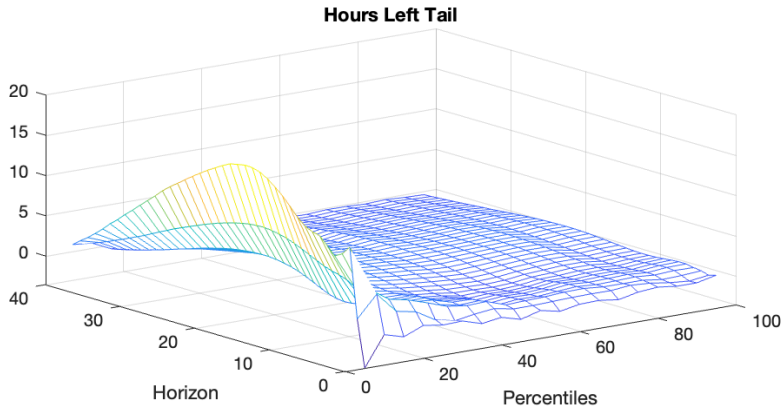
UK: 3D hourly wages of the left tail - LFS

[▶ return](#)



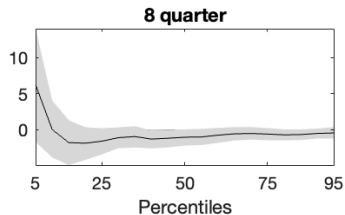
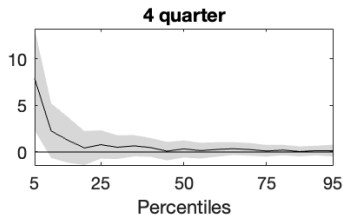
UK: 3D Hours of the left tail - FES

[▶ return](#)



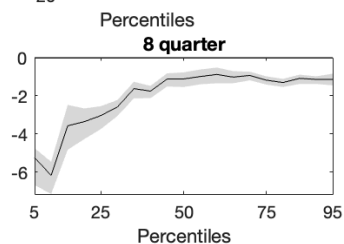
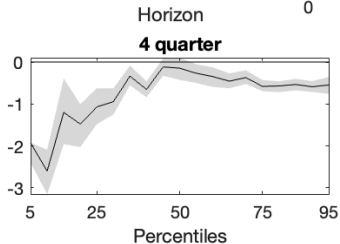
UK: 3D Labor income of the left tail - FES

[▶ return](#)



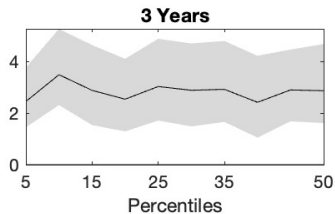
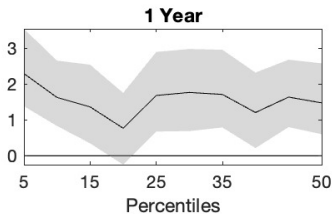
UK: 3D Wages of the left tail - FES

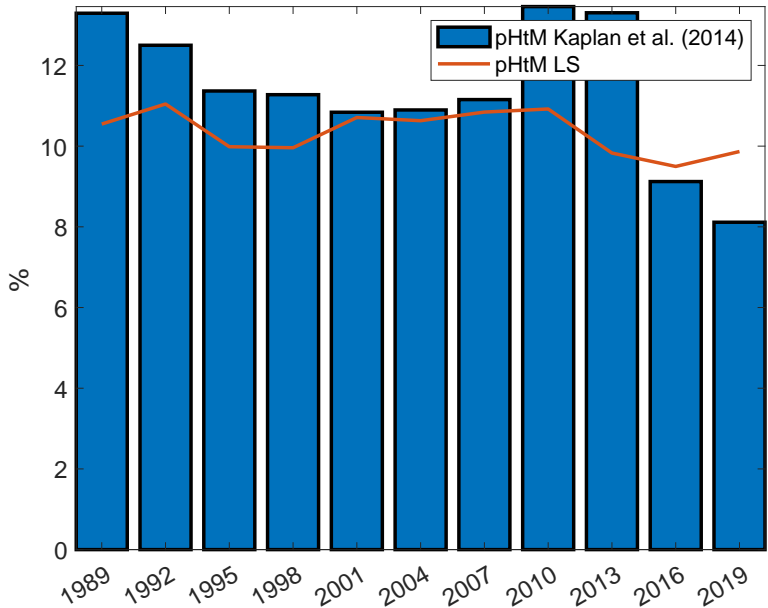
[▶ return](#)



UK: 3D Unemployment of the left tail

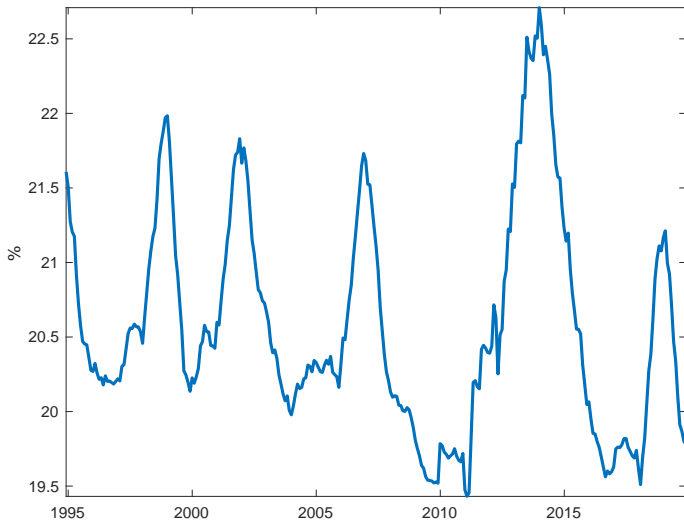
[▶ return](#)





US: Hours proportion of the bottom 20% CPS

[▶ return](#)



Savers

▶ return

- Savers maximize their lifetime utility subject to their budget constraint, taking prices and wages as given:

$$\max_{c_t^S, b_t^S, H_t^S} \mathbb{E}_t \sum_{t=0}^{\infty} \beta^t \left(\frac{(c_t^S)^{1-\frac{1}{\sigma_S}}}{1-\frac{1}{\sigma_S}} - \nu^S \frac{(H_t^S)^2}{2} \right) \quad \text{subject to}$$

$$c_t^S + b_t^S = \frac{1}{1-\lambda} d_t + H_t^S w_t + \frac{R_{t-1}}{\Pi_t} b_{t-1}^S,$$

- Π_t is inflation, w_t are real wages, R is the gross nominal interest rate on bonds and d_t are firm profits. σ_S is the inter-temporal elasticity of substitution and ν^S indicates how leisure is valued relative to consumption.

- HtM have no assets and thus consume their labor income as well as the transfer they get from the government:

$$\max_{c_t^H, H_t^H} \mathbb{E}_t \sum_{t=0}^{\infty} \beta^t \left(\frac{(c_t^H)^{1-\frac{1}{\sigma_H}}}{1-\frac{1}{\sigma_H}} - \nu^H \frac{(H_t^H)^2}{2} \right) \quad \text{subject to}$$

$$c_t^H \leq H_t^H w_t.$$

Inequality and Monetary Policy

▶ return

- **Proposition** Under SADL ($\lambda < \frac{1}{1+\varphi}$), if $\sigma_H < \sigma_H^*$ an increase in λ reduces (increases) the aggregate impact of monetary policy shocks if $\lambda < \lambda^*$ ($\lambda > \lambda^*$). Where

$$\lambda^* = -\frac{\sigma_S - \sigma_H + \sqrt{-\sigma_H \varphi (\sigma_H - \sigma_S) (\sigma_S \varphi + 1)}}{(\sigma_H - \sigma_S)(1 + \varphi)}$$
$$\sigma_H^* = \frac{\sigma_S}{\sigma_S \varphi^2 + \varphi + 1}.$$

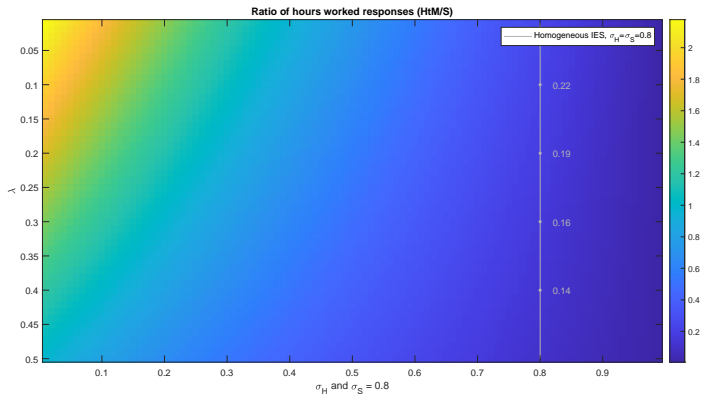
- **inequality** $\uparrow \Rightarrow \downarrow$ **effectiveness of monetary policy.**

- With $\sigma_S = 1 \Rightarrow \sigma_H^* = 0.33$:

- $\sigma_H^* = 0.33 \Rightarrow \lambda^* = 0$
- $\sigma_H^* = 0.1 \Rightarrow \lambda^* = 0.2643$
- $\sigma_H^* = 0.05 \Rightarrow \lambda^* = 0.3378$

IES and difference in labor supply

▶ return



Relative (absolute) magnitude of the response of HtM and savers hours worked to a monetary policy shock for different values of σ_H and λ . Values larger than one indicate a larger volatility of HtM labor supply relative to Savers. The gray vertical line indicates the relative ratio when the IES equals 0.8 for both agents.

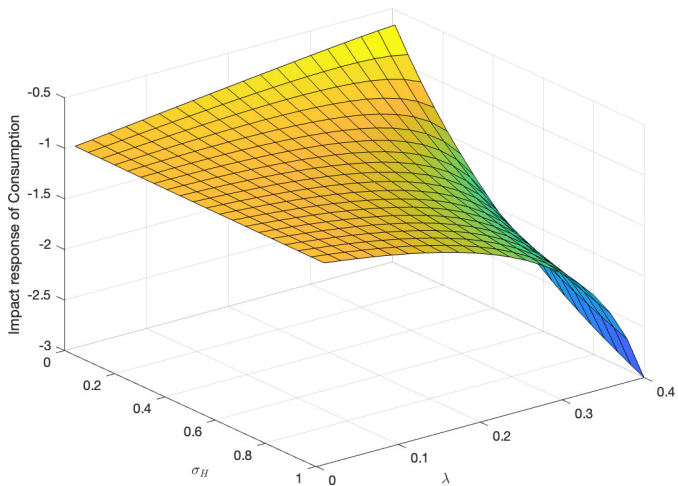
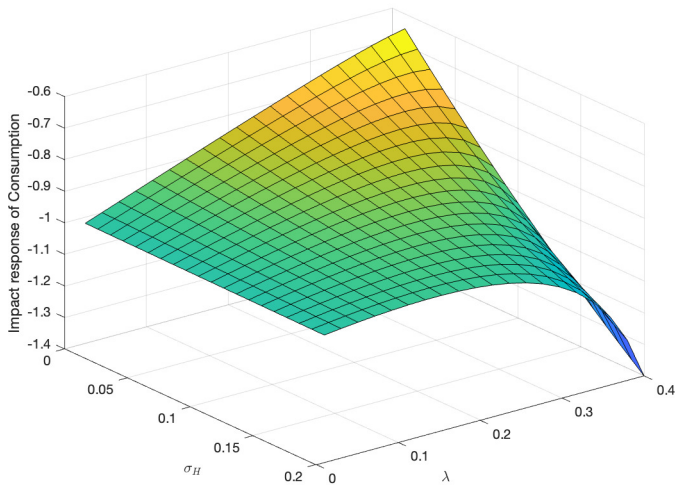


Figure: Impact response of Hours/Consumption to a 1% tightening with $\sigma_S = 1$.

▶ return



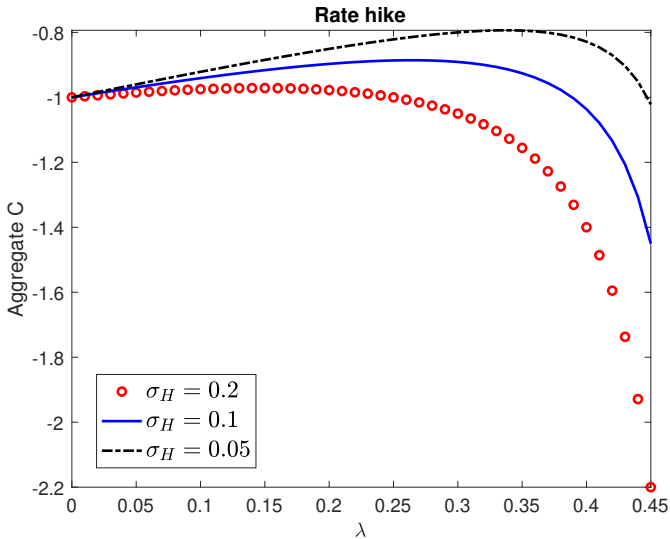
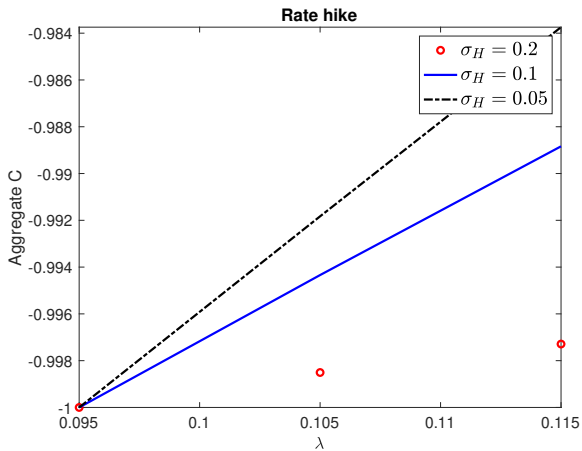


Figure: Impact response of Hours/Consumption to a 1% tightening with $\sigma_S = 1$.

▶ return



$$U(c_t^j, H_t^j) = \frac{(c_t^j - \bar{c})^{1 - \frac{1}{\sigma}}}{1 - \frac{1}{\sigma}} - \nu^j \frac{(H_t^j)^{1 + \varphi}}{1 + \varphi}$$

- for $c^j \geq \bar{c}$ **IES increasing in consumption:**

$$-c^j \frac{U''_{c^j}}{U'_{c^j}} = \frac{c^j}{\sigma(c^j - \bar{c})}$$

- Log-linear Labor supply: $\varphi \hat{H}_t^j = \hat{w}_t - \frac{c^j}{\sigma(c^j - \bar{c})} \hat{c}_t^j$
- If $\sigma < \frac{c^H}{(c^H - \bar{c})} \Leftrightarrow \frac{\partial \hat{H}_t^j}{\partial \hat{w}_t} < 0$

Log-linearized Conditions of TANK with Non-homothetic preferences

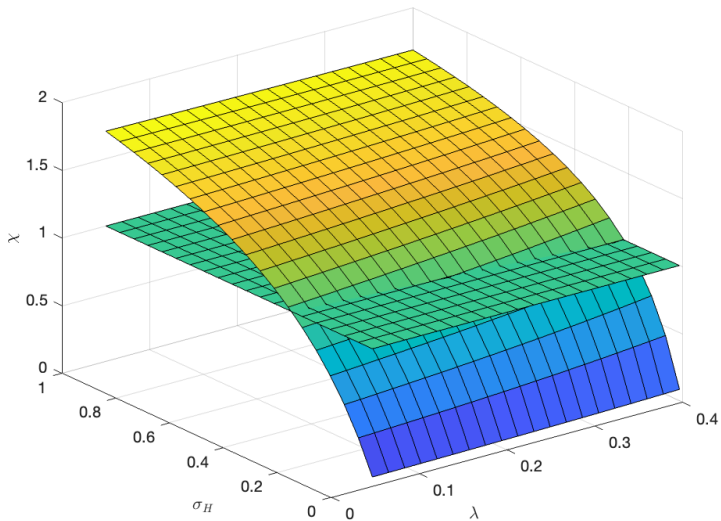
| | | |
|------|-------------------------|--|
| 1: | Aggregate Hours | $(1 - \lambda)\hat{H}_t^S \frac{H^S}{H} + \lambda \frac{H^H}{H} \hat{H}_t^H = \hat{H}_t$ |
| 2: | Aggregate Consumption | $\hat{c}_t = (1 - \lambda) \frac{c^S}{c} \hat{c}_t^S + \lambda \frac{c^h}{c} \hat{c}_t^H$ |
| 3: | Euler | $\hat{c}_t^S = \hat{c}_{t+1 t}^S - \frac{\sigma(c^S - \bar{c})}{c^S} \left(\hat{R}_t - \hat{\Pi}_{t+1 t} \right)$ |
| 4-5: | Labor Supply $j = S, H$ | $\hat{H}_t^j = \hat{w}_t - \frac{c^j}{(c^j - \bar{c})\sigma} \hat{c}_t^j$ |
| 6: | Budget constraint H | $\hat{c}_t^H = (\hat{H}_t^H + \hat{w}_t) \frac{w^H}{c^H}$ |
| 7: | Phillips Curve | $\hat{\Pi}_t = \beta \hat{\Pi}_{t+1 t} + \kappa \hat{w}_t$ |
| 8: | Taylor Rule | $\hat{R}_t = \hat{\Pi}_{t+1 t} + \epsilon_t^m$ |

Table: TANKs: S PIH Savers; H poor HtM.

Calibration

[▶ return](#)

| Parameter | Value | Description | Source |
|-------------|--------|---|----------------------------------|
| β | 0.99 | Discount Factor | Quarterly |
| σ^H | 0.10 | Intertemporal elasticity of substitution, H | Vissing-Jørgensen, 2002 |
| σ^S | 0.80 | Intertemporal elasticity of substitution, S | Vissing-Jørgensen, 2002 |
| φ | 2 | Inverse of Frish elasticity of Labor Supply | Chetty et al., 2011 |
| δ | 0.0175 | Capital depreciation | NIPA |
| ι | 5.5 | Investment adjustment costs | Smets and Wouters, 2017 |
| η | 11 | Elasticity of substitution goods | Price markup 10% |
| η^w | 11 | Elasticity of substitution labor | Wage markup 10% |
| ϕ^r | 0.78 | Interest rate smoothing | Bayer, Born, and Luetticke, 2020 |
| ϕ^π | 2.45 | Taylor rule coeff of inflation | Bayer, Born, and Luetticke, 2020 |
| ϕ^y | 0.11 | Taylor rule coeff of output | Bayer, Born, and Luetticke, 2020 |
| λ | 0.10 | Share of HtM Agents | hours of bottom 25% in CEX |
| κ | 0.097 | Slope of Phillips Curve | Bayer, Born, and Luetticke, 2020 |
| κ^w | 0.110 | Slope of Wage Phillips Curve | Bayer, Born, and Luetticke, 2020 |
| \bar{H}^H | 0.20 | Steady State Hours, HtM | CPS |
| \bar{H}^S | 0.25 | Steady State Hours, Savers | CPS |
| $\bar{\Pi}$ | 1 | Steady State Inflation | Convention |

χ [▶ return](#)

χ Sticky Wages

[▶ return](#)

