

**DATA COLLECTION METHODS
FOR INTERNATIONAL FREIGHT AND
PASSENGER TRANSPORT
IN THE ITALIAN
BALANCE OF PAYMENTS**

Antonello Biagioli, Enrico Tosti, Simonetta Zappa

UFFICIO ITALIANO DEI CAMBI

10th World Conference on Transport Research

Istanbul, 8 July 2004

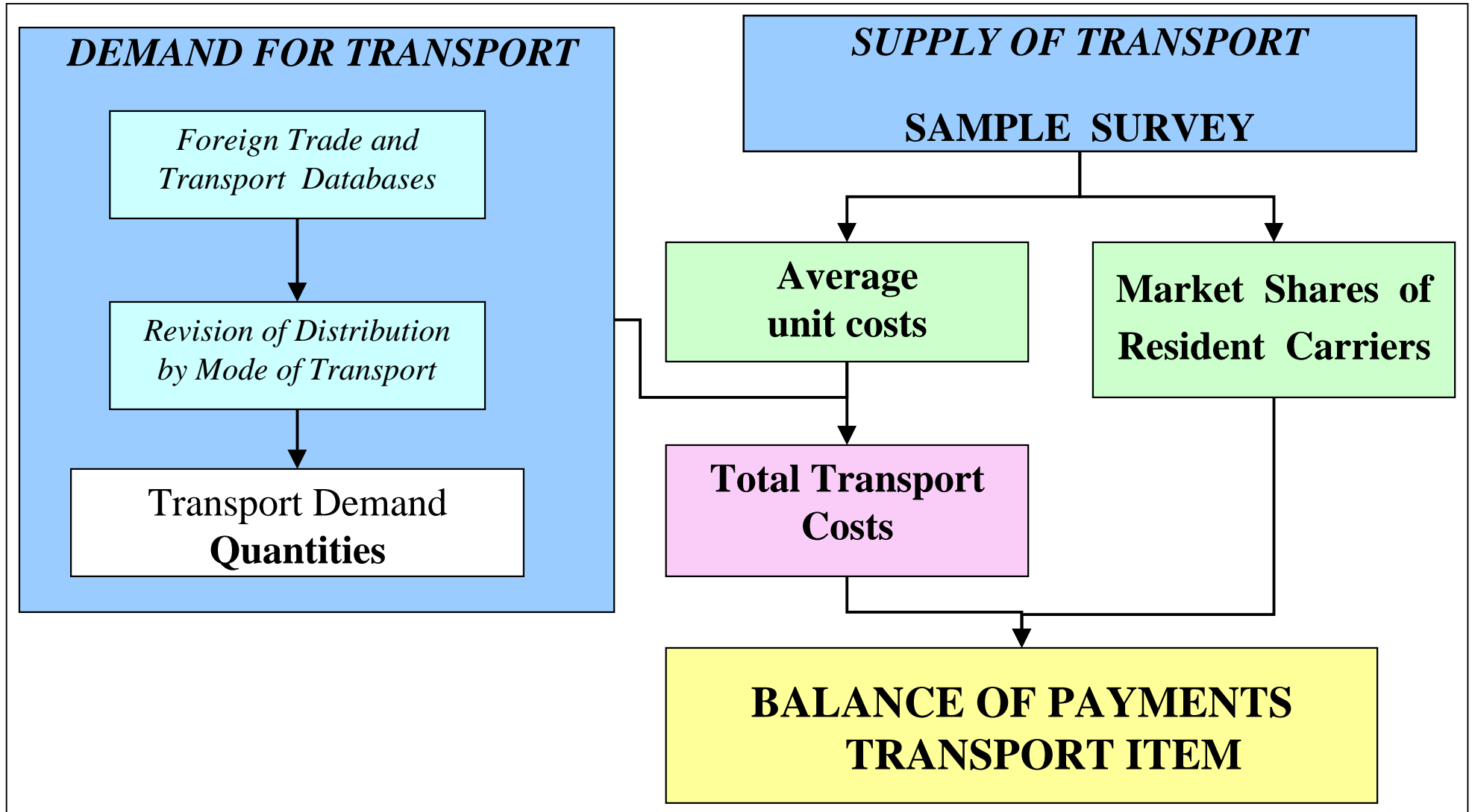
BALANCE OF PAYMENTS

Standard components (International Monetary Fund)

- CURRENT ACCOUNT
 - GOODS
 - SERVICES
 - TRANSPORTATION
 - TRAVEL
 -
 -
 - OTHER SERVICES
 - INCOME
 - CURRENT TRANSFERS
- CAPITAL ACCOUNT
- FINANCIAL ACCOUNT



MERCHANDISE TRANSPORT METHODOLOGY



MERCHANDISE TRANSPORT SURVEY

relevant statistical indicators (year 2002)

Mode of transport	Number of interviewed operators	Number of standard consignments	Average weighted sampling error
<i>Sea Container</i>	33	294	7.5%
<i>Sea Bulk (liquid and solid)</i>	15	160	7.3%
<i>Sea General cargo</i>	10	81	9.3%
<i>Air</i>	11	442	7.0%
<i>Road</i>	45	618	4.4%
<i>Rail Container</i>	10	126	5.0%
Total	124	1,721	6.4%

DATA SOURCES FOR INTERNATIONAL TRAVEL

Old system
(->1995)



**Information from
bank settlements**

New system
(1996 ->)



Traveller

**Information
from sample
surveys**

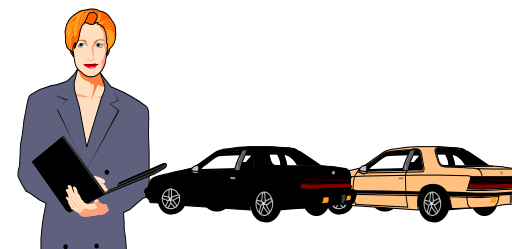
INTERNATIONAL TRAVEL SURVEY DESIGN

Survey operations

Two operations are carried out at each border point:

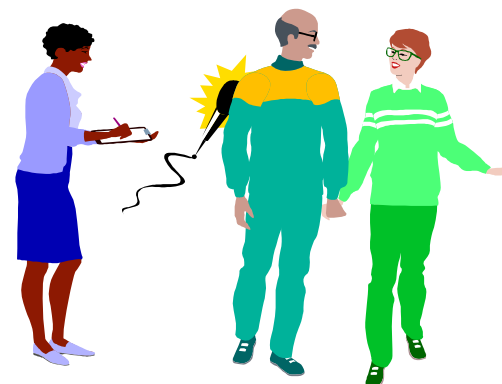
COUNTING

the number and the nationality of all travellers, entering or exiting Italy, are assessed

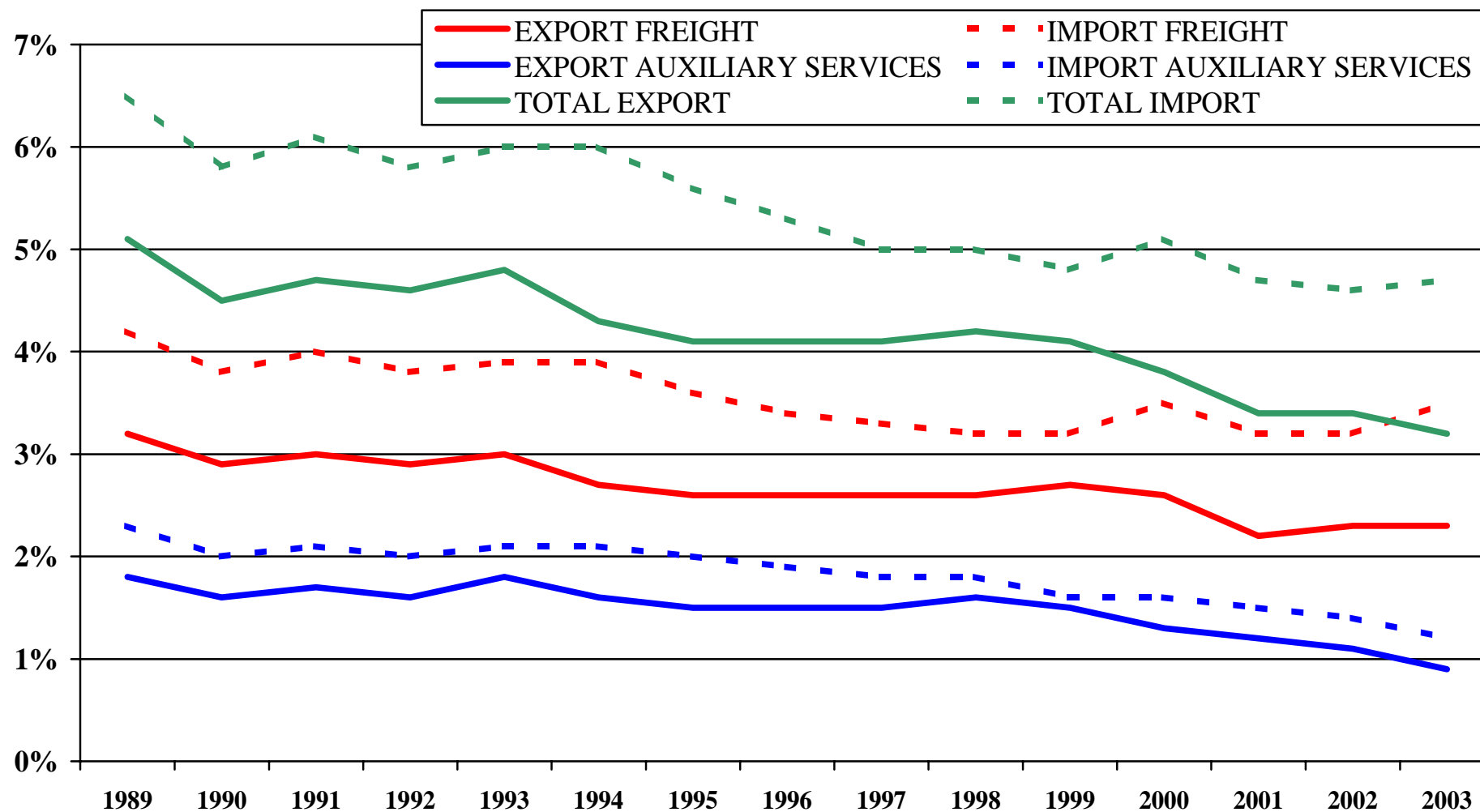


INTERVIEWING

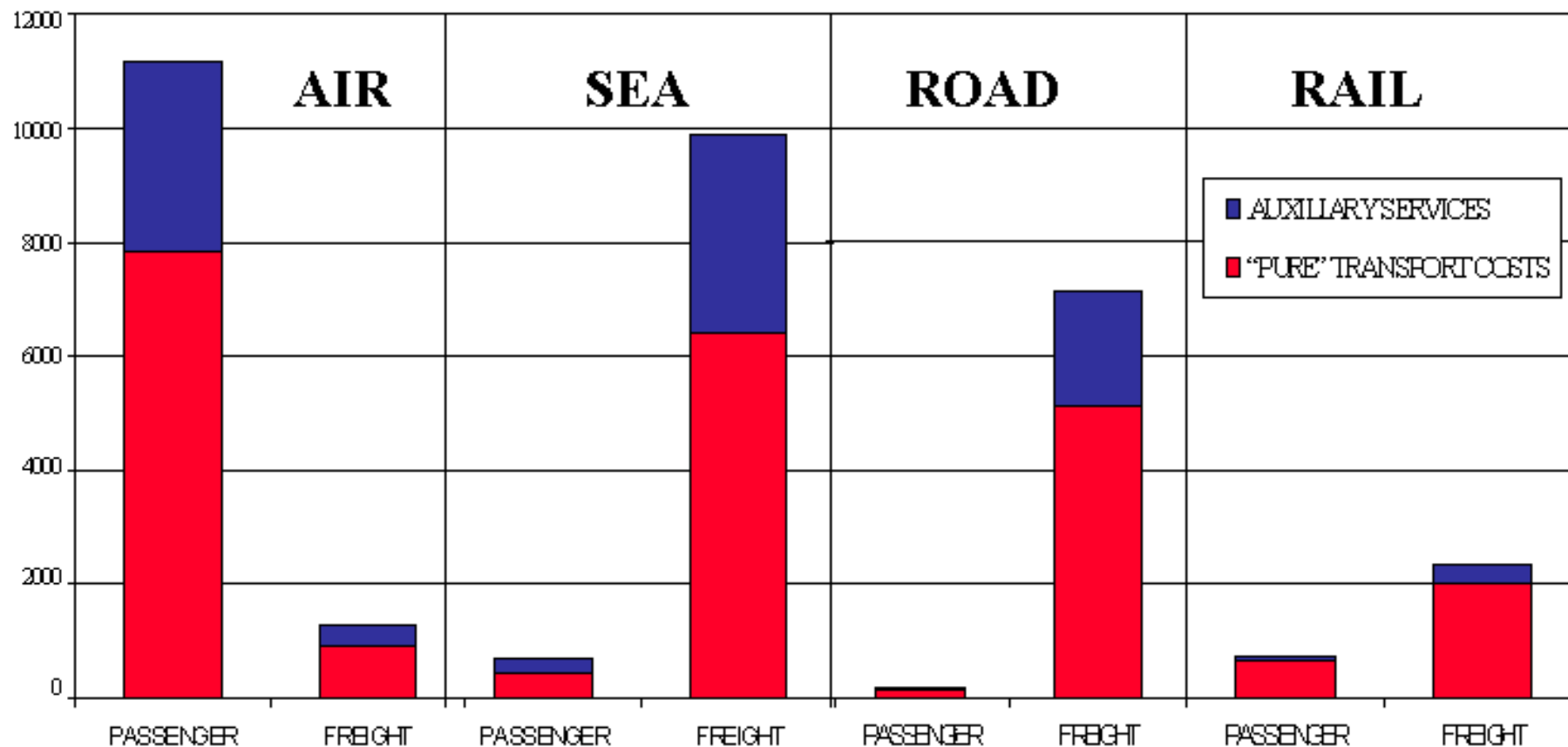
travellers are stopped and interviewed to obtain information about trip, expenditure, etc.



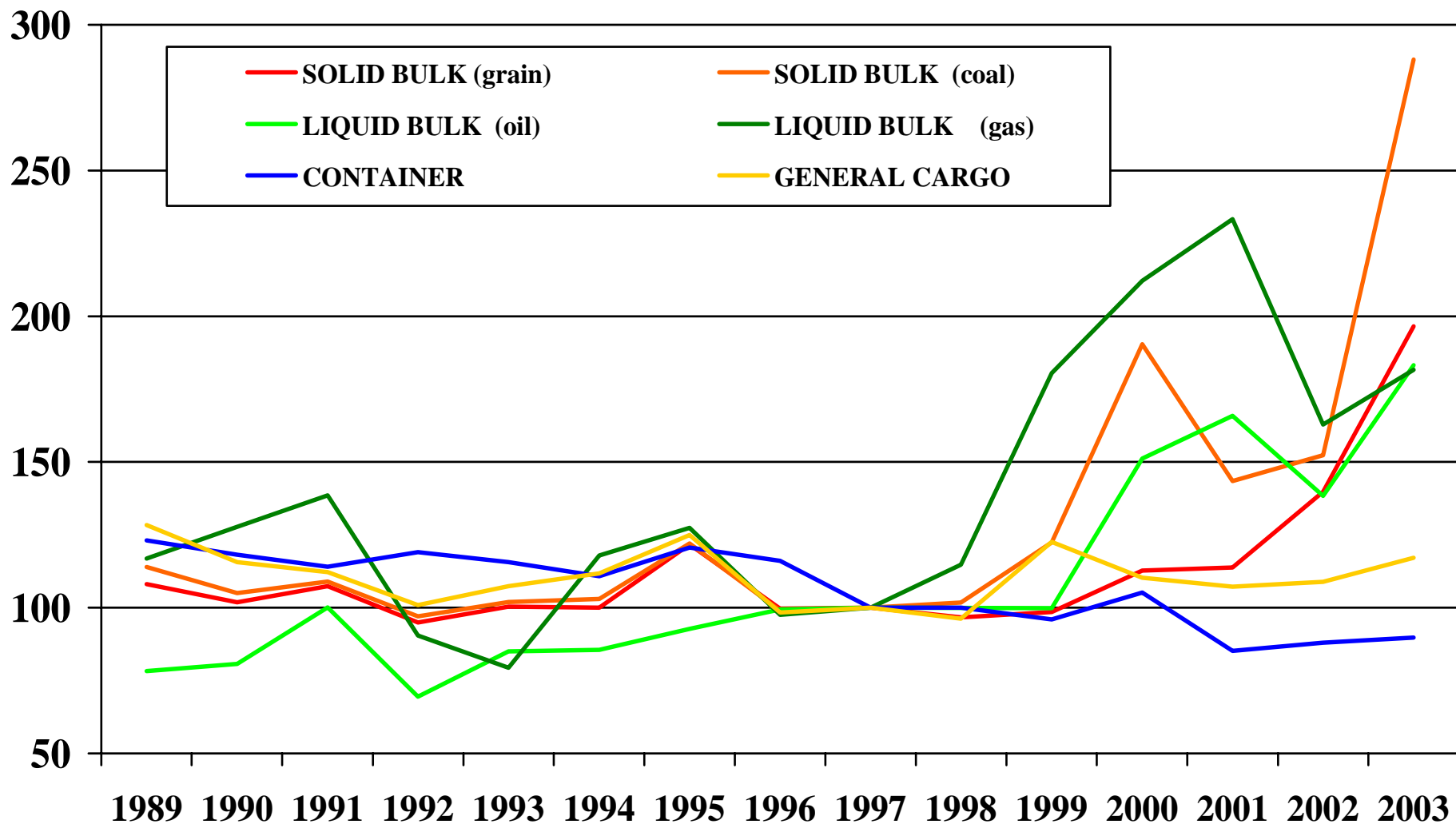
THE INCIDENCE OF INTERNATIONAL TRANSPORT COSTS ON MERCHANDISE VALUES



PASSENGER AND FREIGHT COSTS BY MODE OF TRANSPORT YEAR 2003 - MILLIONS OF EURO

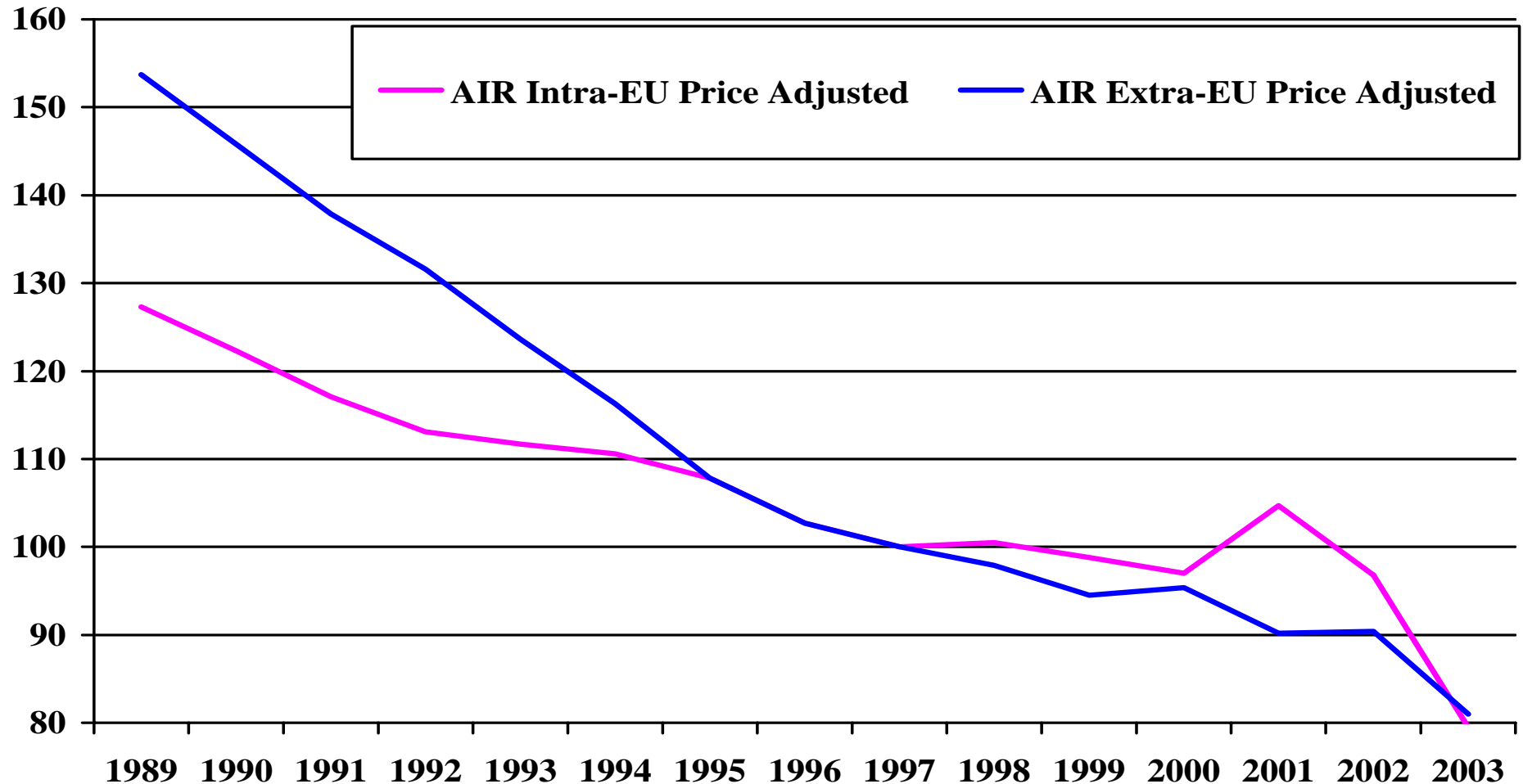


Sea freight indexes in US dollar current values (base year 1997=100)



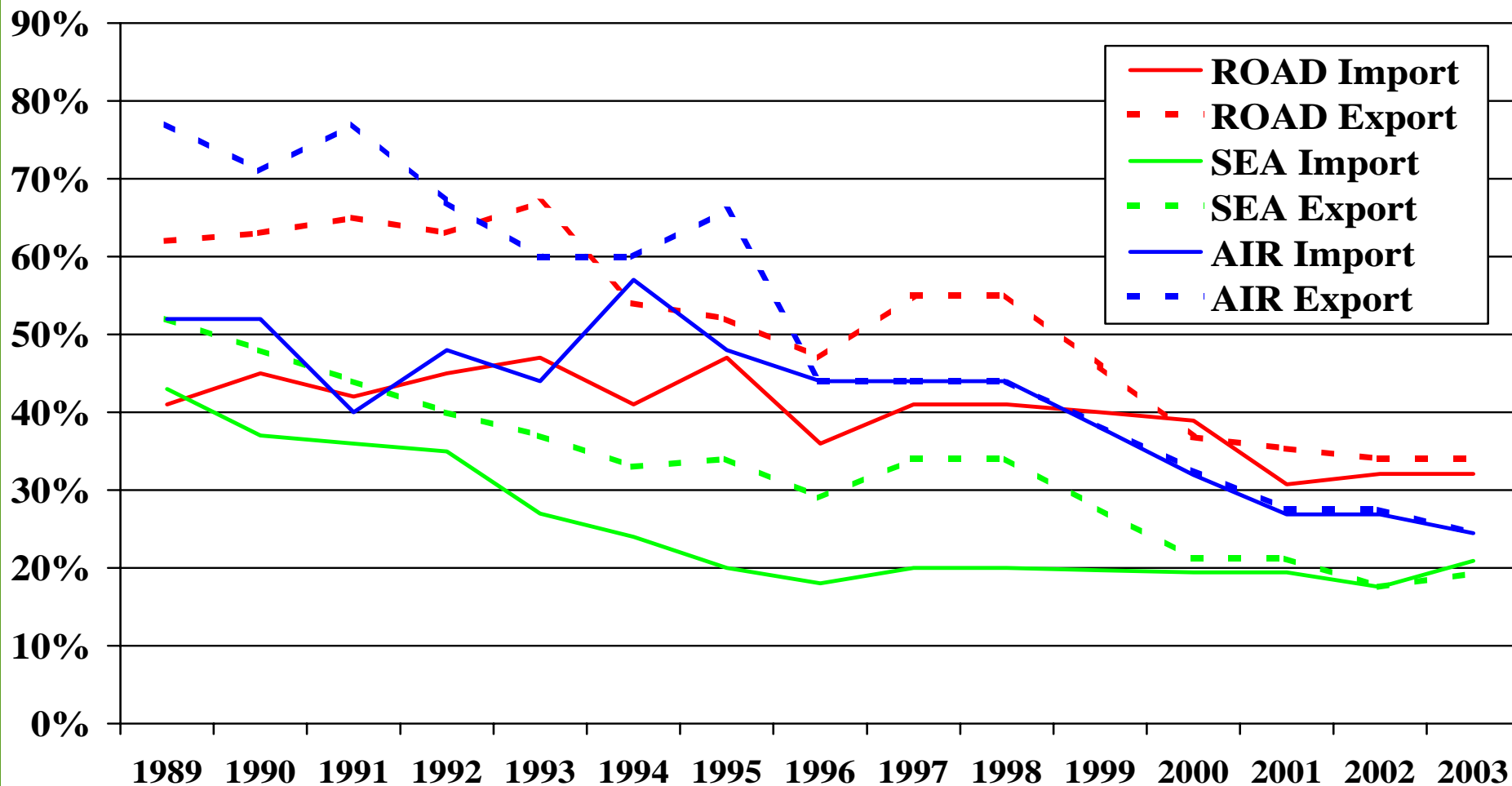
PASSENGER TRANSPORT

Intra and extra-EU air fare indexes (price-adjusted values)
(base year 1997=100)



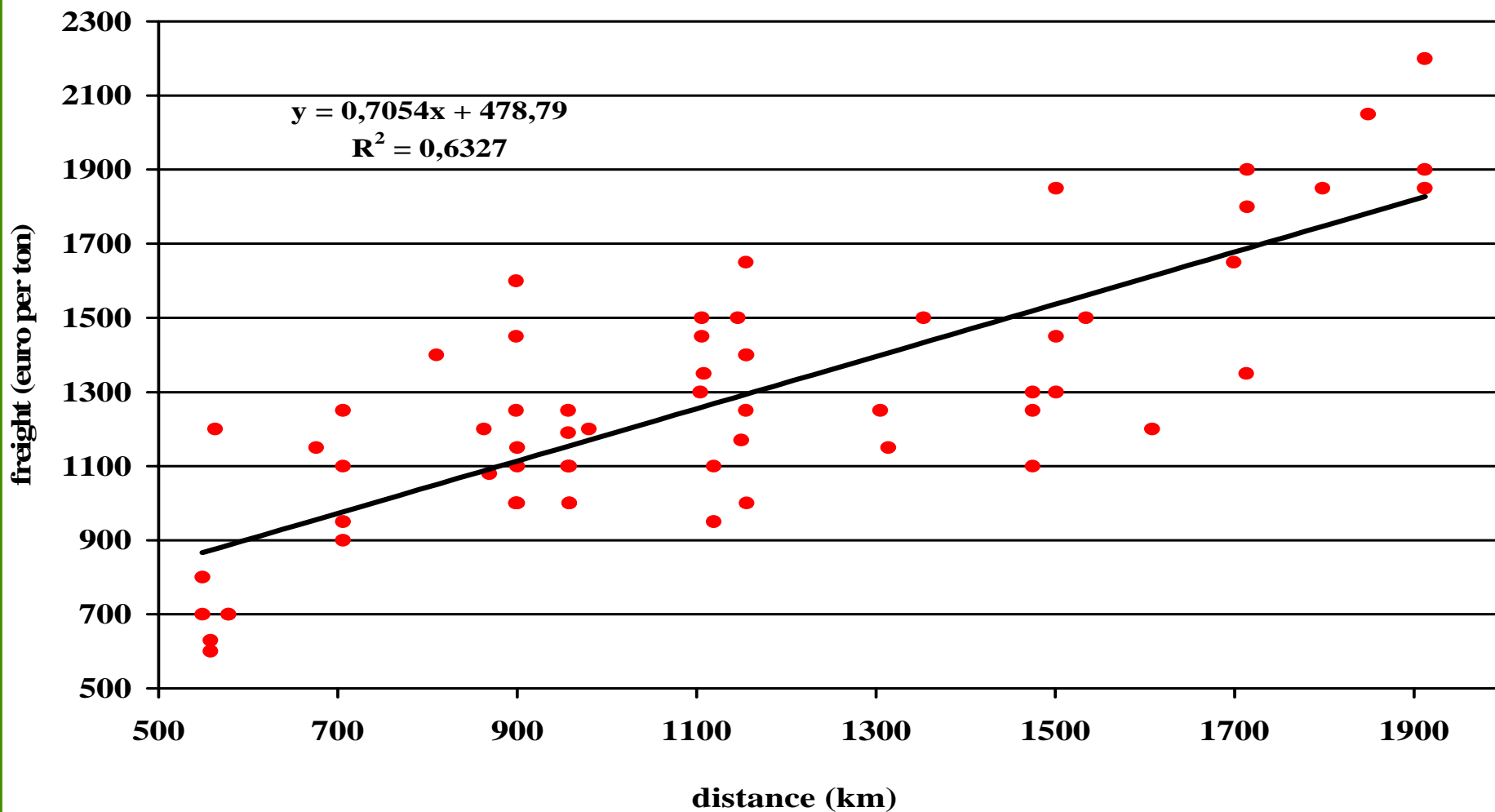
MERCHANDISE TRANSPORT

MARKET SHARES OF ITALIAN CARRIERS



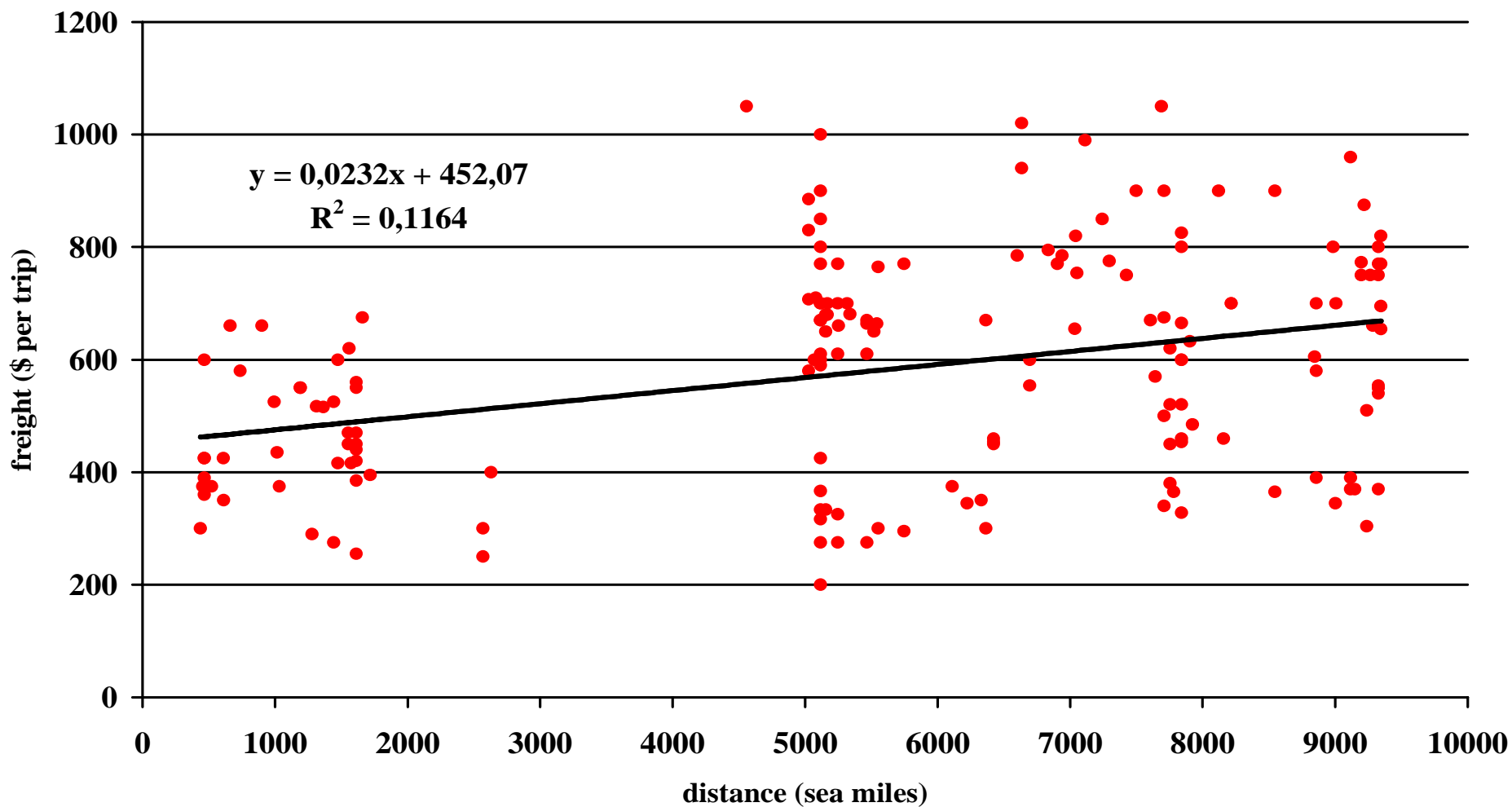
ROAD FREIGHT RATES - GERMANY

import and export (year 2002)



SEA CONTAINER FREIGHT RATES (year 2002)

North America, Far East and Mediterranean - import and export



FINDING VARIABLES DETERMINING FREIGHT RATES

$$TC = f (M, D, T, L, U, C, \dots)$$



where:

TC = Transport Cost (per ton)

M = Mode of transport

D = Distance

T = Time of consignment

L = Type of Load

U = Unbalance of flows (possibility of empty or partial load trips)

C = Competitive pressure