



EUROPEAN CENTRAL BANK  
EUROSYSTEM

## Press release

2 January 2025

# Monetary developments in the euro area: November 2024

- Annual growth rate of broad [monetary aggregate M3](#) increased to 3.8% in November 2024 from 3.4% in October
- Annual growth rate of narrower [monetary aggregate M1](#), comprising currency in circulation and overnight deposits, increased to 1.5% in November from 0.2% in October
- Annual growth rate of [adjusted loans to households](#) stood at 0.9% in November, compared with 0.8% in October
- Annual growth rate of [adjusted loans to non-financial corporations](#) decreased to 1.0% in November from 1.2% in October

## Components of the broad monetary aggregate M3

The annual growth rate of the broad monetary aggregate M3 increased to 3.8% in November 2024 from 3.4% in October, averaging 3.5% in the three months up to November. The [components of M3](#) showed the following developments. The annual growth rate of the narrower aggregate M1, which comprises currency in circulation and overnight deposits, increased to 1.5% in November from 0.2% in October. The annual growth rate of short-term deposits other than overnight deposits (M2-M1) decreased to 6.1% in November from 7.3% in October. The annual growth rate of marketable instruments (M3-M2) decreased to 17.0% in November from 20.1% in October.

### European Central Bank

Directorate General Communications

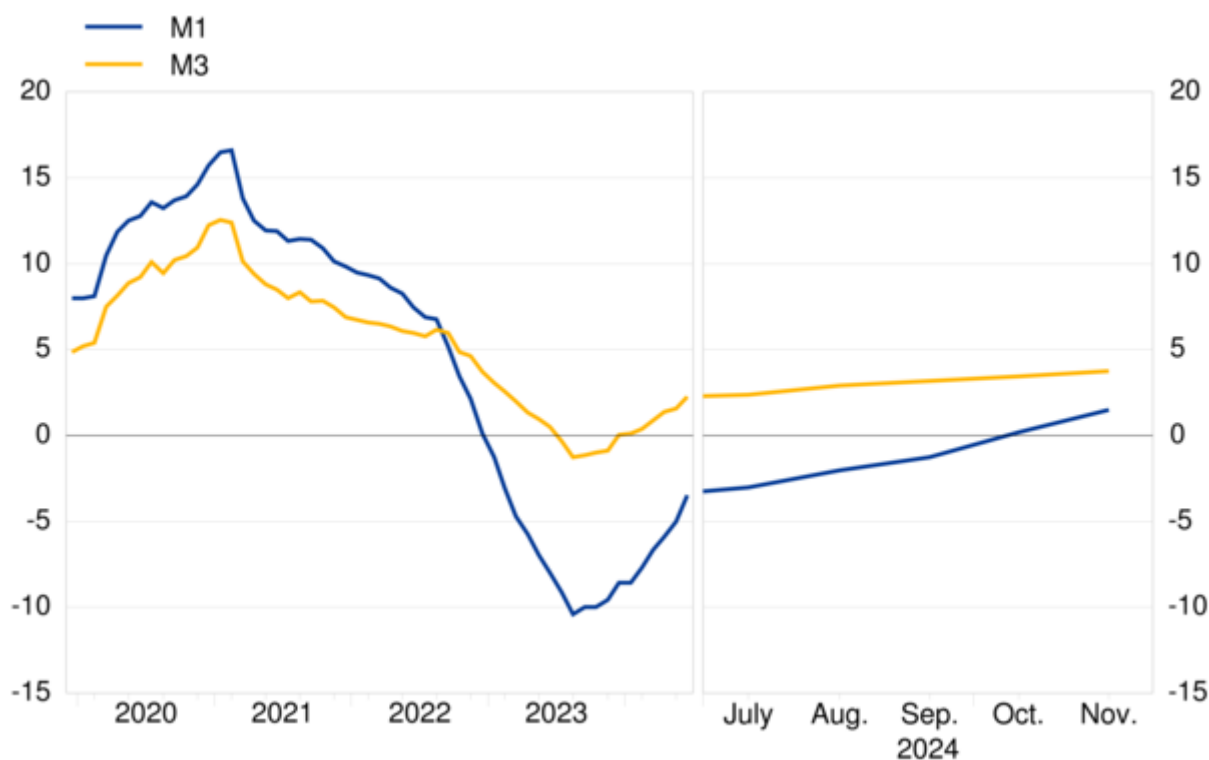
Sonnemannstrasse 20, 60314 Frankfurt am Main, Germany

Tel.: +49 69 1344 7455, e-mail: [media@ecb.europa.eu](mailto:media@ecb.europa.eu), website: [www.ecb.europa.eu](http://www.ecb.europa.eu)

Reproduction is permitted provided that the source is acknowledged.

## Chart 1 Monetary aggregates

(annual growth rates)



### [Data for monetary aggregates](#)

Looking at the [components' contributions to the annual growth rate of M3](#), the narrower aggregate M1 contributed 1.0 percentage points (up from 0.1 percentage points in October), short-term deposits other than overnight deposits (M2-M1) contributed 1.8 percentage points (down from 2.1 percentage points) and marketable instruments (M3-M2) contributed 1.0 percentage points (down from 1.2 percentage points).

Among the holding sectors of [deposits in M3](#), the annual growth rate of deposits placed by households increased to 3.5% in November from 3.2% in October, while the annual growth rate of deposits placed by non-financial corporations increased to 2.2% in November from 1.7% in October. Finally, the annual growth rate of deposits placed by investment funds other than money market funds decreased to 8.0% in November from 8.8% in October.

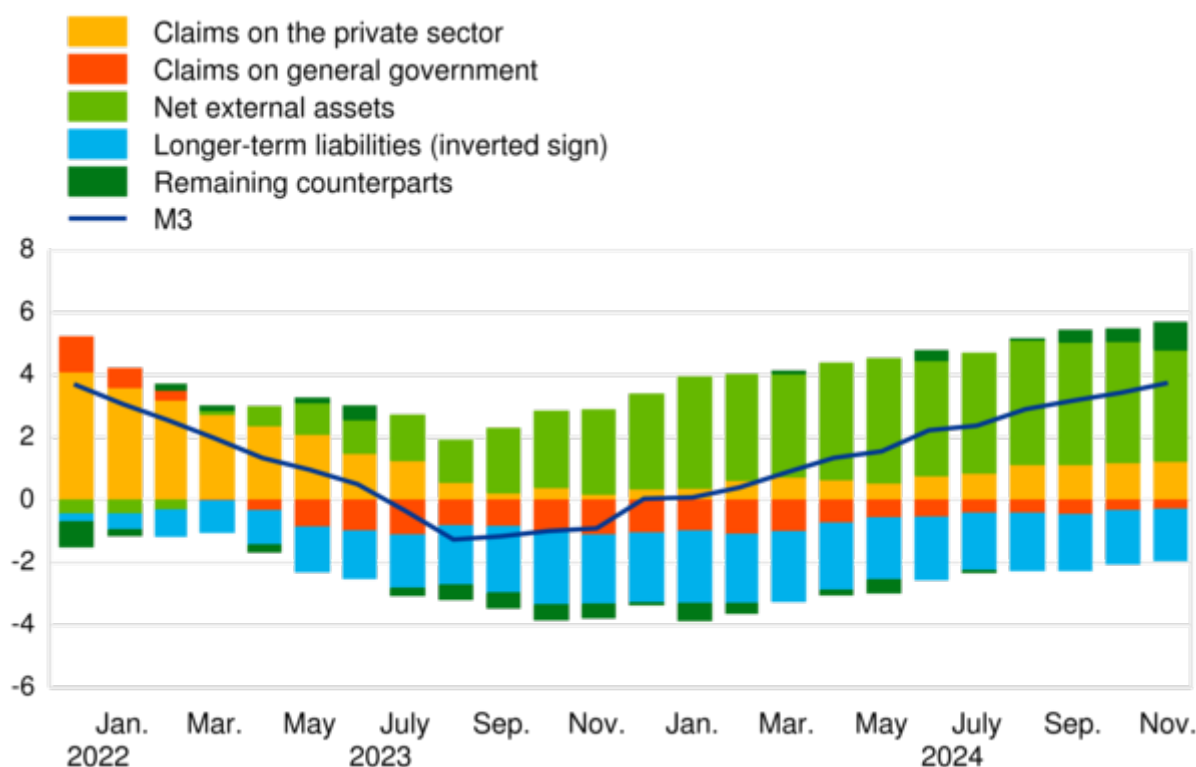
## Counterparts of the broad monetary aggregate M3

The annual growth rate of M3 in November 2024, as a reflection of changes in the items on the monetary financial institution (MFI) consolidated balance sheet other than M3 ([counterparts of M3](#)), can be broken down as follows: net external assets contributed 3.5 percentage points (down from 3.9 percentage points in October), claims on the private sector contributed 1.2 percentage points (as in the previous month), claims on general government contributed -0.3 percentage points (as in the previous month), longer-term liabilities contributed -1.6 percentage points (up from -1.7 percentage points), and the remaining counterparts of M3 contributed 0.9 percentage points (up from 0.4 percentage points).

### Chart 2

Contribution of the M3 counterparts to the annual growth rate of M3

(percentage points)



[Data for contribution of the M3 counterparts to the annual growth rate of M3](#)

#### European Central Bank

Directorate General Communications  
Sonnemannstrasse 20, 60314 Frankfurt am Main, Germany  
Tel.: +49 69 1344 7455, e-mail: [media@ecb.europa.eu](mailto:media@ecb.europa.eu), website: [www.ecb.europa.eu](http://www.ecb.europa.eu)

Reproduction is permitted provided that the source is acknowledged.

## Claims on euro area residents

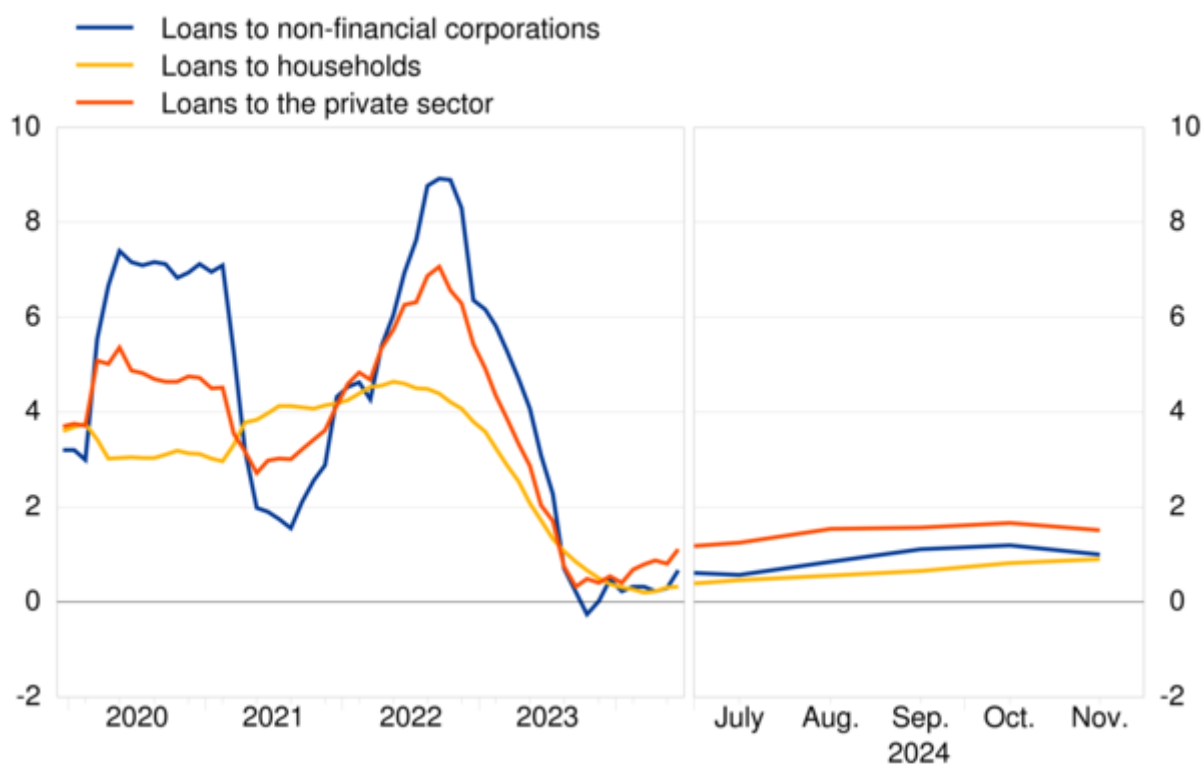
The annual growth rate of total [claims on euro area residents](#) stood at 0.7% in November 2024, compared with 0.6% in the previous month. The annual growth rate of [claims on general government](#) stood at -0.8% in November, unchanged from the previous month, while the annual growth rate of [claims on the private sector](#) stood at 1.3% in November, compared with 1.2% in October.

The annual growth rate of [adjusted loans to the private sector](#) (i.e. adjusted for loan transfers and notional cash pooling) decreased to 1.5% in November from 1.7% in October. Among the borrowing sectors, the annual growth rate of [adjusted loans to households](#) stood at 0.9% in November, compared with 0.8% in October, while the annual growth rate of [adjusted loans to non-financial corporations](#) decreased to 1.0% in November from 1.2% in October.

### Chart 3

#### Adjusted loans to the private sector

(annual growth rates)



[Data for adjusted loans to the private sector](#)

#### European Central Bank

Directorate General Communications  
Sonnemannstrasse 20, 60314 Frankfurt am Main, Germany  
Tel.: +49 69 1344 7455, e-mail: [media@ecb.europa.eu](mailto:media@ecb.europa.eu), website: [www.ecb.europa.eu](http://www.ecb.europa.eu)

Reproduction is permitted provided that the source is acknowledged.

**Notes:**

- Data in this press release are adjusted for seasonal and end-of-month calendar effects, unless stated otherwise.
- "Private sector" refers to euro area non-MFIs excluding general government.
- Hyperlinks lead to data that may change with subsequent releases as a result of revisions. Figures shown in annex tables are a snapshot of the data as at the time of the current release.

## 1 Monetary developments in the euro area: November 2024

(EUR billions and annual percentage changes; data adjusted for seasonal effects <sup>a)</sup>)

	End-of-month level	Monthly flow			Annual growth rate		
	Nov 2024	Sep 2024	Oct 2024	Nov 2024	Sep 2024	Oct 2024	Nov 2024
<b>COMPONENTS OF M3</b>							
<b>1. M3</b>	<b>16682</b>	<b>97</b>	<b>22</b>	<b>90</b>	<b>3.2</b>	<b>3.4</b>	<b>3.8</b>
1.1. M2	15540	88	12	106	2.0	2.4	2.9
1.1.1. M1	10548	56	48	102	-1.3	0.2	1.5
Currency in circulation	1551	3	4	5	0.5	0.7	1.2
Overnight deposits	8997	53	44	96	-1.6	0.1	1.5
1.1.2. Other short-term deposits (M2 - M1)	4992	32	-35	4	9.6	7.3	6.1
Deposits with an agreed maturity of up to two years	2559	33	-38	-2	22.9	16.8	13.3
Deposits redeemable at notice of up to three months	2434	-2	3	6	-1.7	-1.1	-0.6
1.2. Marketable instruments (M3 - M2)	1142	9	10	-16	21.6	20.1	17.0
Repurchase agreements	246	-5	11	-4	61.5	55.6	39.9
Money market fund shares	859	17	-5	5	19.2	18.5	17.8
Debt securities issued with a maturity of up to two years	37	-3	5	-17	-34.4	-35.8	-50.9
<b>COUNTERPARTS OF M3</b>							
<b>MFI liabilities:</b>							
<b>2. Liabilities to central government <sup>b)</sup></b>	<b>424</b>	<b>-16</b>	<b>43</b>	<b>-22</b>	<b>-11.2</b>	<b>0.6</b>	<b>0.2</b>
<b>3. Longer-term liabilities to other euro area residents</b>	<b>7805</b>	<b>33</b>	<b>10</b>	<b>7</b>	<b>3.9</b>	<b>3.7</b>	<b>3.6</b>
3.1. Deposits with an agreed maturity of over two years	1839	11	-3	5	0.0	0.1	0.6
3.2. Deposits redeemable at notice of over three months	116	2	1	0	54.7	47.0	37.4
3.3. Debt securities issued with a maturity of over two years	2575	14	5	1	9.6	8.7	8.0
3.4. Capital and reserves	3275	6	7	0	0.6	0.9	0.9
<b>MFI assets:</b>							
<b>4. Claims on euro area residents</b>	<b>21961</b>	<b>17</b>	<b>42</b>	<b>0</b>	<b>0.5</b>	<b>0.6</b>	<b>0.7</b>
4.1. Claims on general government	6276	-5	7	-8	-1.2	-0.8	-0.8
Loans	990	-2	9	3	-1.0	-0.2	0.3
Debt securities	5259	-3	-2	-11	-1.2	-1.0	-1.0
Equity	26	0	0	0	2.8	2.3	2.0
4.2. Claims on the private sector <sup>c)</sup>	15686	22	35	8	1.2	1.2	1.3
Loans	13179	15	22	8	1.3	1.2	1.2
Adjusted loans <sup>d)</sup>	13419	15	41	-1	1.6	1.7	1.5
Debt securities	1576	4	11	-1	-1.4	-0.1	0.3
Equity	622	1	1	-1	4.5	3.8	5.0
Shares issued by investment funds other than money market funds	309	1	2	2	3.8	3.8	3.9
<b>5. Net external assets</b>	<b>2641</b>	<b>61</b>	<b>46</b>	<b>9</b>	<b>-</b>	<b>-</b>	<b>-</b>
<b>6. Other counterparts of M3 (residual)</b>	<b>310</b>	<b>36</b>	<b>-13</b>	<b>67</b>	<b>-</b>	<b>-</b>	<b>-</b>
of which:							
6.1. Repos with central counterparties (liabilities) <sup>e)</sup>	177	-8	-15	7	22.1	5.6	5.3
6.2. Reverse repos to central counterparties (assets) <sup>e)</sup>	164	18	-16	-8	15.4	13.7	1.2

a) Figures may not add up due to rounding. The information in this table is based on the consolidated balance sheet of monetary financial institutions (MFIs) located in the euro area. The MFI sector comprises the Eurosystem, deposit-taking corporations except central banks and money market funds.

Monthly flows are derived from differences in levels excluding changes that do not arise from transactions, such as revaluations, exchange rate variations and statistical reclassifications.

M3 comprises liabilities of MFIs, as well as short-term deposit liabilities of post offices and specific central government entities, vis-à-vis non-MFI euro area residents other than central government.

b) Includes holdings of the central government of deposits with the MFI sector and of securities issued by the MFI sector.

c) Private sector refers to euro area non-MFIs excluding general government.

d) Loans adjusted for the effects of transfers to and from MFI balance sheets, as well as for notional cash pooling services provided by MFIs. For further breakdowns see Table 4.

e) The series is not adjusted for seasonal effects.

## 2 Contributions to the M3 annual growth rate: November 2024

(contributions in terms of the M3 annual percentage change; data adjusted for seasonal effects <sup>a)</sup>)

	Sep 2024	Oct 2024	Nov 2024
<b>COMPONENTS OF M3</b>			
1. M1	-0.8	0.1	1.0
1.1. Currency in circulation	0.0	0.1	0.1
1.2. Overnight deposits	-0.9	0.0	0.8
2. M2 - M1 (other short-term deposits)	2.7	2.1	1.8
3. M3 - M2 (marketable instruments)	1.3	1.2	1.0
<b>COUNTERPARTS OF M3</b>			
4. Claims on the private sector	1.1	1.2	1.2
5. Claims on general government	-0.5	-0.3	-0.3
6. Net external assets	3.9	3.9	3.5
7. Longer-term liabilities (inverted sign) <sup>b)</sup>	-1.8	-1.7	-1.6
8. Remaining counterparts	0.4	0.4	0.9
<b>M3 (sum of items 1 to 3, or items 4 to 8)</b>	<b>3.2</b>	<b>3.4</b>	<b>3.8</b>

a) Figures may not add up due to rounding.

b) Longer-term liabilities to euro area residents excluding central government.

### 3 Deposits in M3: November 2024

(EUR billions and annual percentage changes; data adjusted for seasonal effects <sup>a)</sup>)

	End-of-month level	Monthly flow			Annual growth rate		
	Nov 2024	Sep 2024	Oct 2024	Nov 2024	Sep 2024	Oct 2024	Nov 2024
<b>Total deposits</b>	<b>14235</b>	<b>80</b>	<b>19</b>	<b>96</b>	<b>2.8</b>	<b>3.2</b>	<b>3.6</b>
<b>1. Deposits placed by households <sup>b)</sup></b>	<b>8698</b>	<b>31</b>	<b>37</b>	<b>38</b>	<b>2.8</b>	<b>3.2</b>	<b>3.5</b>
1.1. Overnight deposits	5166	3	29	43	-2.7	-1.2	0.2
1.2. Deposits with an agreed maturity of up to two years	1260	28	7	-9	48.0	39.1	30.0
1.3. Deposits redeemable at notice of up to three months	2271	0	1	4	-1.4	-0.9	-0.4
1.4. Repurchase agreements	1	0	0	0	21.7	25.2	-3.1
<b>2. Deposits placed by non-financial corporations</b>	<b>3409</b>	<b>2</b>	<b>9</b>	<b>26</b>	<b>1.6</b>	<b>1.7</b>	<b>2.2</b>
2.1. Overnight deposits	2453	9	15	28	-1.0	0.5	1.7
2.2. Deposits with an agreed maturity of up to two years	812	-8	-9	-5	11.5	5.9	4.6
2.3. Deposits redeemable at notice of up to three months	130	-1	2	2	-4.2	-2.5	-1.0
2.4. Repurchase agreements	13	1	2	0	-15.0	17.5	-4.1
<b>3. Deposits placed by investment funds other than money market funds</b>	<b>447</b>	<b>6</b>	<b>-6</b>	<b>1</b>	<b>11.0</b>	<b>8.8</b>	<b>8.0</b>
3.1. Overnight deposits	357	5	-2	0	6.7	5.4	5.0
3.2. Deposits with an agreed maturity of up to two years	41	0	-4	2	-2.2	-9.1	-6.4
3.3. Deposits redeemable at notice of up to three months	2	0	0	0	-20.6	-5.0	-1.2
3.4. Repurchase agreements	47	1	0	0	98.0	84.7	67.3
<b>4. Deposits placed by insurance corporations and pension funds</b>	<b>229</b>	<b>13</b>	<b>-10</b>	<b>8</b>	<b>10.0</b>	<b>3.6</b>	<b>1.6</b>
4.1. Overnight deposits	153	7	-2	3	0.0	2.3	4.2
4.2. Deposits with an agreed maturity of up to two years	42	1	-4	4	2.1	-6.4	-0.8
4.3. Deposits redeemable at notice of up to three months	3	0	0	0	-5.7	-4.7	-5.5
4.4. Repurchase agreements	31	5	-4	1	110.6	38.6	-5.4
<b>5. Deposits placed by other non-monetary financial corporations <sup>c)</sup></b>	<b>888</b>	<b>22</b>	<b>-9</b>	<b>9</b>	<b>4.9</b>	<b>7.5</b>	<b>7.7</b>
5.1. Overnight deposits	479	19	3	6	1.1	7.5	7.7
5.2. Deposits with an agreed maturity of up to two years	252	8	-19	2	-0.3	-4.2	-4.5
5.3. Deposits redeemable at notice of up to three months	18	0	0	0	0.3	5.1	1.6
5.4. Repurchase agreements <sup>c)</sup>	139	-5	6	0	40.8	37.1	42.2
<b>6. Deposits placed by other general government</b>	<b>564</b>	<b>7</b>	<b>-3</b>	<b>15</b>	<b>-1.6</b>	<b>0.2</b>	<b>4.7</b>

a) Figures may not add up due to rounding. The information in this table is based on the consolidated balance sheet of monetary financial institutions (MFIs) located in the euro area. The MFI sector comprises the Eurosystem, deposit-taking corporations except central banks and money market funds.

Monthly flows are derived from differences in levels excluding changes that do not arise from transactions, such as exchange rate variations and statistical reclassifications.

b) Includes deposits by non-profit institutions serving households.

c) Excludes repurchase agreements with central counterparties.



**4 Adjusted loans to the private sector: November 2024** <sup>a)</sup>  
(EUR billions and annual percentage changes; data adjusted for seasonal effects <sup>b)</sup>)

	End-of-month level	Monthly flow			Annual growth rate		
	Nov 2024	Sep 2024	Oct 2024	Nov 2024	Sep 2024	Oct 2024	Nov 2024
<b>1. Loans to households</b> <sup>c)</sup>	<b>6918</b>	<b>9</b>	<b>10</b>	<b>11</b>	<b>0.7</b>	<b>0.8</b>	<b>0.9</b>
1.1. Credit for consumption	775	2	3	1	3.0	3.3	3.2
1.2. Lending for house purchase	5448	7	6	8	0.7	0.8	0.9
1.3. Other lending	694	0	0	2	-2.1	-1.8	-1.5
<i>of which: sole proprietors</i>	358	-1	-1	-1	-2.7	-2.7	-2.6
<b>2. Loans to non-financial corporations</b>	<b>5162</b>	<b>16</b>	<b>5</b>	<b>3</b>	<b>1.1</b>	<b>1.2</b>	<b>1.0</b>
2.1. up to 1 year	819	10	-3	-4	0.9	1.4	0.1
2.2. over 1 year and up to 5 years	1105	5	-1	-3	0.3	0.1	0.0
2.3. over 5 years	3238	1	9	9	1.4	1.5	1.6
<b>3. Loans to investment funds other than money market funds</b>	<b>177</b>	<b>2</b>	<b>-1</b>	<b>0</b>	<b>5.8</b>	<b>5.5</b>	<b>6.1</b>
<b>4. Loans to insurance corporations and pension funds</b>	<b>126</b>	<b>-2</b>	<b>1</b>	<b>-1</b>	<b>-1.4</b>	<b>0.6</b>	<b>0.7</b>
<b>5. Loans to other non-monetary financial corporations</b> <sup>d)</sup>	<b>1036</b>	<b>-10</b>	<b>26</b>	<b>-14</b>	<b>10.5</b>	<b>9.9</b>	<b>7.8</b>

a) Loans adjusted for the effects of transfers to and from MFI balance sheets, as well as for notional cash pooling services provided by MFIs. Data on transferred loans that have been derecognised from MFI balance sheets are included in these figures, where available.

Monthly flows are derived from differences in levels excluding changes that do not arise from transactions, such as revaluations, exchange rate variations and statistical reclassifications.

b) Figures may not add up due to rounding.

c) Includes loans to non-profit institutions serving households.

d) Excludes reverse repos to central counterparties.