



ECMS: Migration activities for the go-live

Seminario ECMS - 16 dicembre 2022

Alessandro Intonti
Banca d'Italia
Servizio Sistema dei Pagamenti

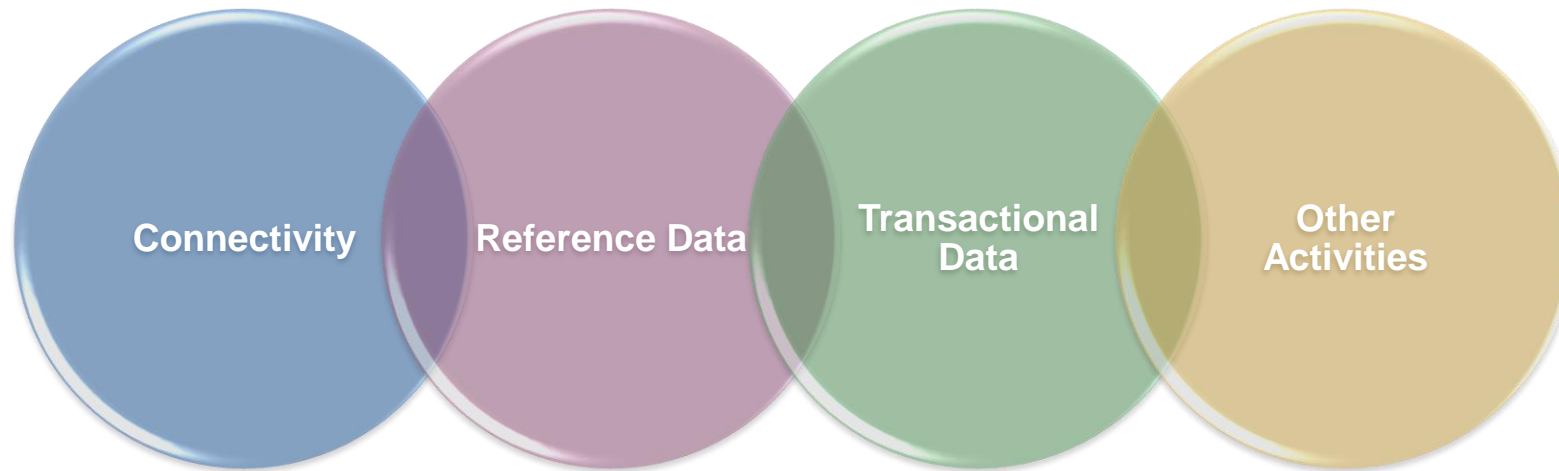


What is the ECMS Migration Process?

The ECMS Migration is the process responsible for the **creation or migration of data in the ECMS**, as well as other necessary activities such as **connectivity of the actors and connectivity to other systems**, to prepare the **ECMS for the go-live**

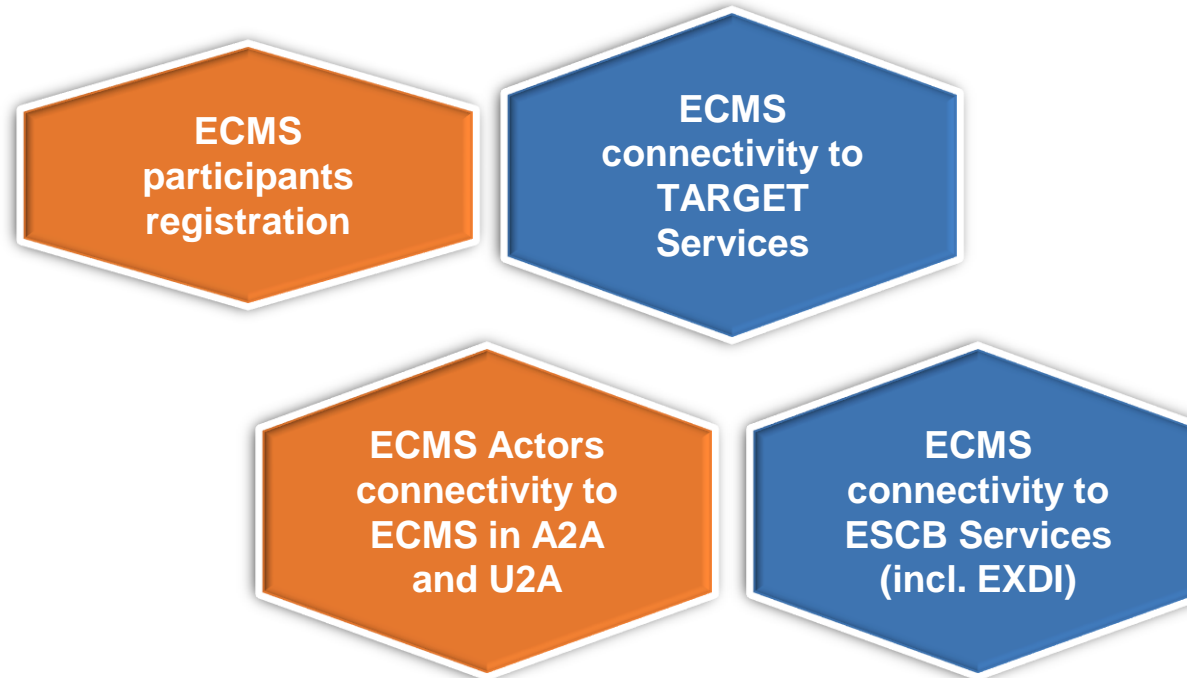
What is the scope of the ECMS Migration?

Considering the ECMS functionalities and the goal of the ECMS migration process, the ECMS migration scope is:



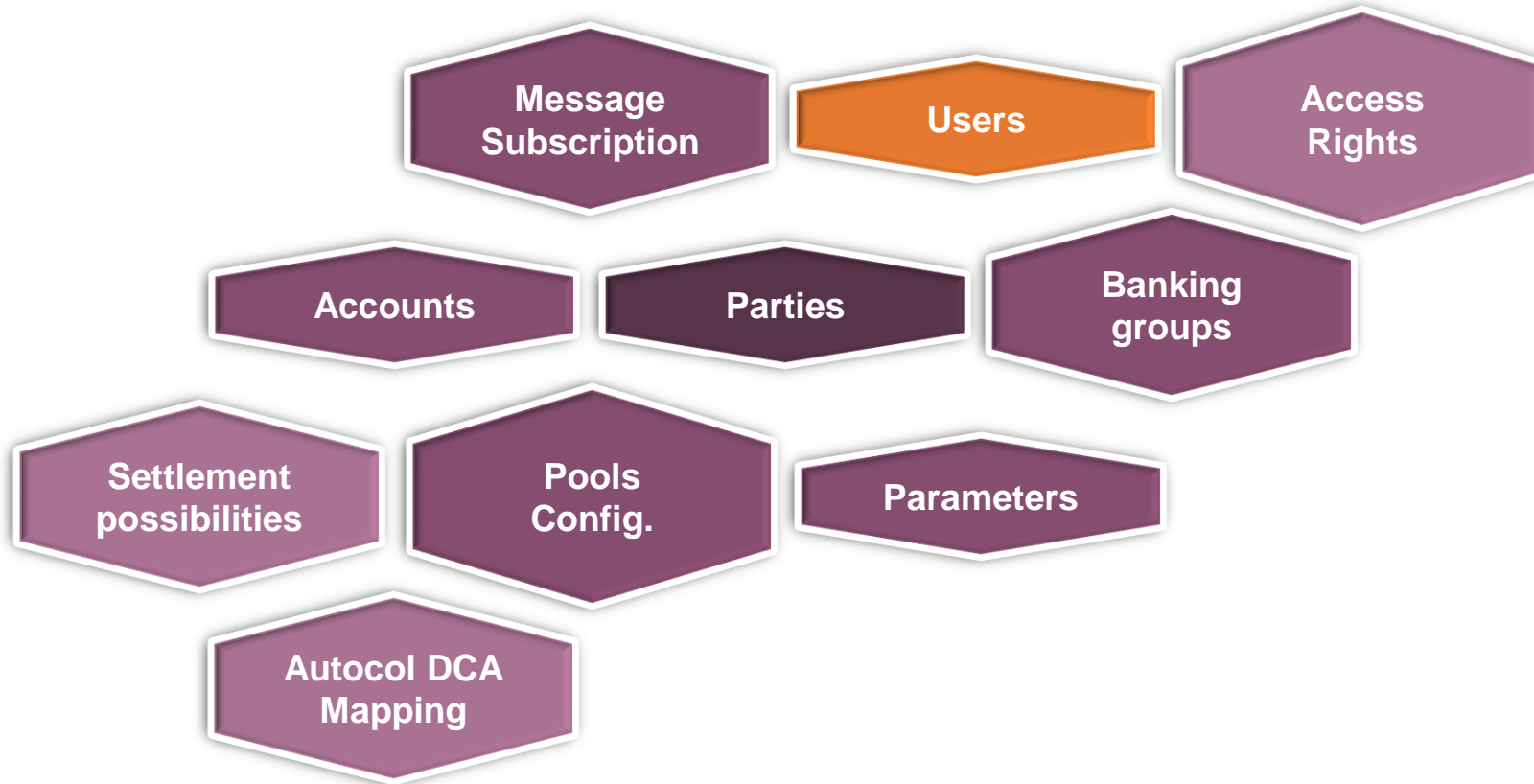
What is the scope of the ECMS Migration?

Connectivity:



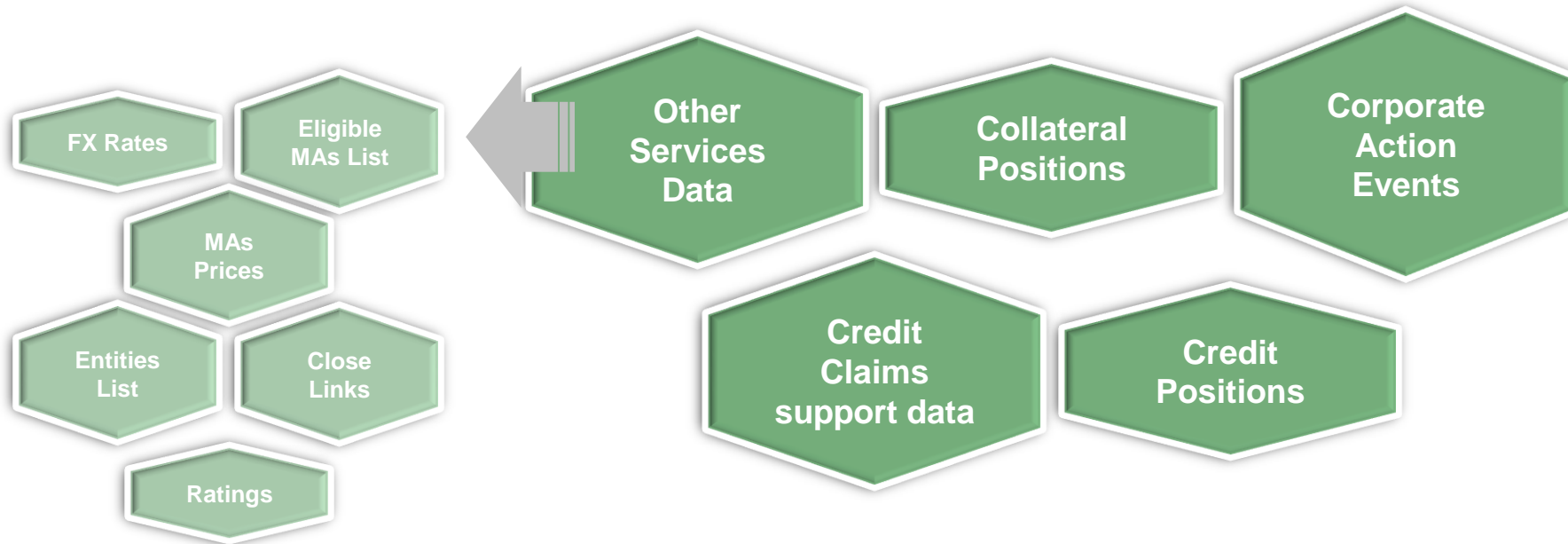
What is the scope of the ECMS Migration?

Reference Data:



What is the scope of the ECMS Migration?

Transactional Data:



Roles and Responsibilities

- Even though there are many ECMS active stakeholders, **the majority of the activities in scope of the ECMS migration process are to be performed by the NCB or the ECMS Service Desk.**
- **NCBs, CTPYs, CSDs and TPAs are responsible for their readiness and migration.**

Principles

- The ECMS migration follows a **big-bang approach**, meaning all the NCBs and their communities participating in the ECMS will be migrated simultaneously so that all participants are live in production from the start for the collateral management functionalities that are moved by the NCBs from local CMSs to the new ECMS.
- The migration is split into 4 major parts: Preparing the migration, Migration Testing (i.e. the rehearsals), Conducting migration (i.e. execution of the migration), Post migration.
- **The migration execution is split into 4 phases: set-up for connectivity, pre-migration, preparation week for the migration weekend, migration weekend.**
- As a pre-condition to start the Migration execution, the collection of participant's production data (including the reference data **registration forms filled in by the participants**), the initial environment configuration and evaluation of migration testing results must be finalized.

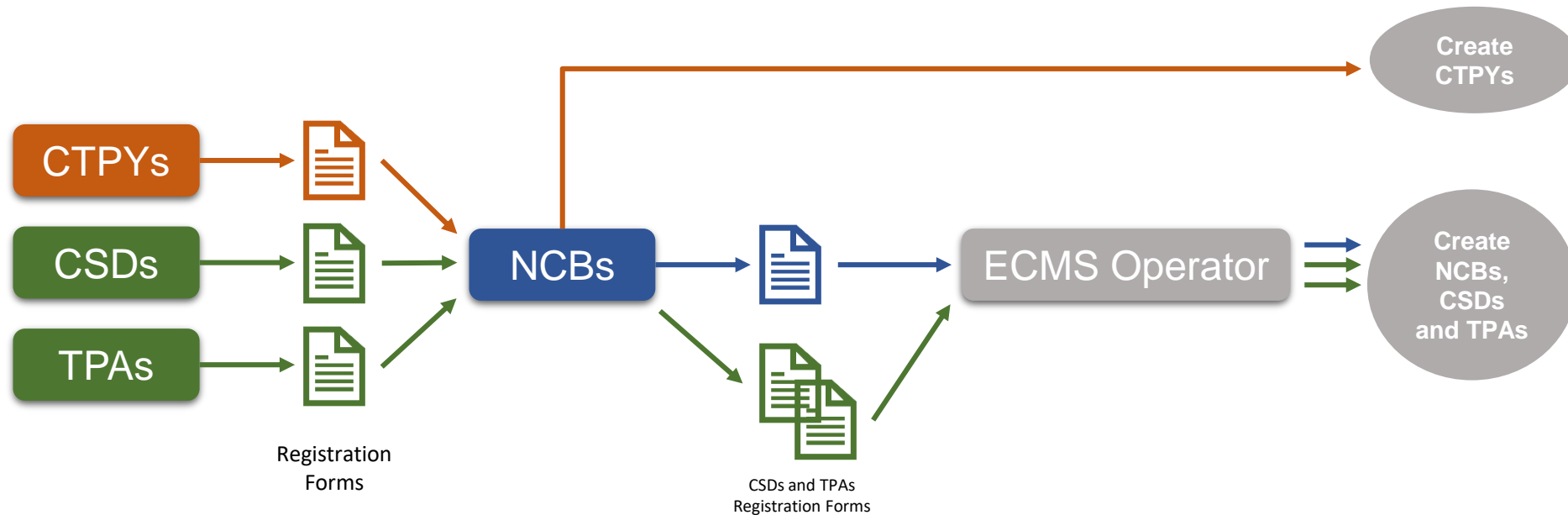
Strategy for Migration and Testing

- The **Strategy for Migration and Testing document** aims at ensuring a smooth transition from the current situation to the ECMS. Hence, it includes the following:
 - ❑ Principles for the testing and migration
 - ❑ General roles and responsibilities
 - ❑ Migration framework
 - ❑ Testing framework
 - ❑ Communication framework
- Migration framework: definition and elaboration of a specific strategy to coordinate all activities required for preparing the migration process from the ECMS stakeholders' perspective and their interdependencies.

Registration Forms

- The goal of the migration registration forms is to collect reference data needed to set up the ECMS parties for go-live, namely data that can only be created by a different actor and needs to be confirmed by said party.
- The forms should be completed and send to the NCBs (or ECMS Operator) sufficiently before the connectivity testing phase start, both for the User Testing and actual go-live.
- To not be confused with the forms needed by the NSPs to established the CGU subscription.

[for more information please check the TARGET Services Connectivity Guide]



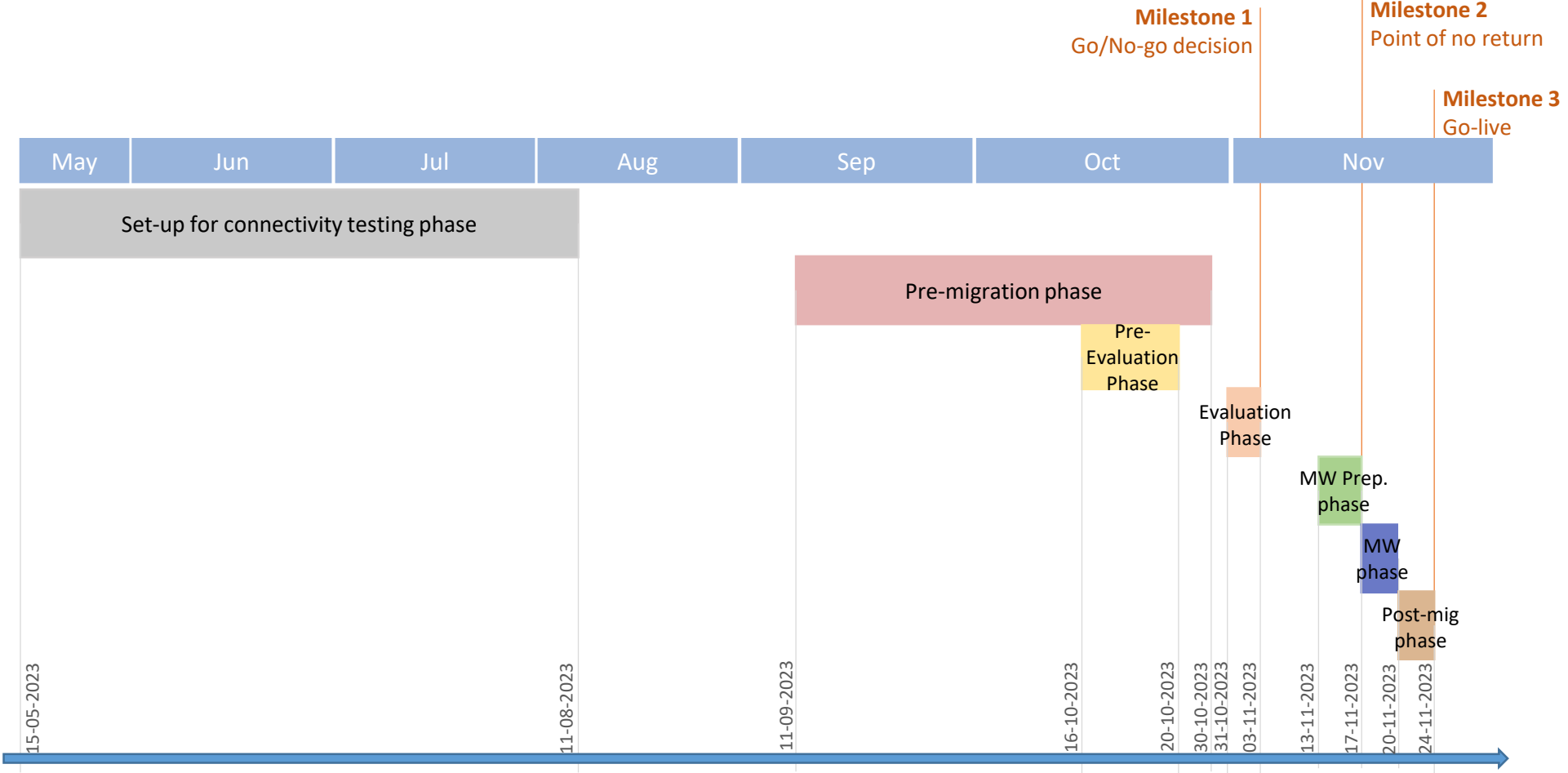
ECMS Migration Activities and Schedule – CTPYs & CSDs/TPAs

- **The ECMS Migration Activities and Schedule is a document that reports all the relevant content and activities for Counterparties (CTPYs), CSDs and Triparty agents.**
- There will be 2 versions of the document – 1 for the CTPYs and 1 for the CSDs/TPAs.

Overall Timeline

DATES UNDER RE-ASSESSMENT FOLLOWING THE NEW GO-LIVE DATE ON 8° APR 2024

The following timeline gives an overview on the timing, duration and chronology of the migration process in ECMS, by highlighting the different phases and milestones:



Definition of the ECMS migration stages, phases and milestones

| Stage/Phase/ Milestone | Dates | Definition |
|---------------------------------|--------------------------|--|
| Set-up for connectivity testing | 15-05-2023 11-08-2023 | Encompasses the migration activities that need to be performed before the pre-migration, in order to allow the NCBs, CSDs, TPAs and Counterparties to test their connectivity to the ECMS Production Environment (excluding the connectivity itself). It is not expected to last the whole period – as that is the duration of the whole connectivity testing. |
| Pre-migration | 11-09-2023 30-10-2023 | Used for the creation or migration of all reference data for the different ECMS participants, namely for NCBs and counterparties. Additionally covers the connectivity, access and set-up of the ECMS DWH. |
| Pre-evaluation | 16-10-2023 20-10-2023 | Occurs after the finalisation of the ECMS User Testing (i.e. foreseen for 13 October 2023), to allow the analysis by the ECMS-UTMSG of the progress of the ECMS migration activities thus far, accounting for the results of the User Testing. Runs in parallel to the Pre-migration phase. |
| Evaluation | 31-10-2023 03-11-2023 | Final phase of the Pre-migration stage. Each NCB shall confirm and report to the ECMS-WG the correctness of their data. ECMS-WG shall evaluate the progress and result of the activities, and consecutively report to the MIB the overall readiness for the migration weekend and go-live. This is the Pre-migration Report. |
| Go/No-go decision | 03-11-2023 | Is the decision to be taken by the MIB, following the evaluation period, to process with the migration and go-live or not. |
| Migration Weekend Preparation | 13-11-2023 17-11-2023 | The goal is to receive all data from the external sources in order to initialise the ECMS database, or other reference data considered too volatile for the pre-migration (such as the credit claims data support data) and therefore reduce the workload and risk of failure during the actual migration weekend. |
| Point of no return | 17-11-2023 | As ECMS pursues a 'Big Bang' approach there is no point of return after the beginning of the actual migration process on 17 November 2023. Hence, at this date any issue with the previous migration activities shall be solved. |
| Migration weekend | 17-11-2023 20-11-2023 | Starts after the closing of the Friday business day on the local collateral management systems (CMSs). All transactional data shall be migrated to the ECMS during the weekend. Additionally, other activities will be done in order to ensure ECMS is fully operable on go-live. |
| Go-live | 20-11-2023 | The ECMS will come into operation and be used to manage the collateral of the Eurosystem with the scheduled start of the day-time processing (DTP) for the business day 20 November 2023 (i.e. 7AM CET). |
| Post-migration | 20-11-2023 24-11-2023 | The main objective is to monitor the ECMS and to make sure the migration was done correctly enabling the ECMS to perform as expected after the big bang migration weekend. This end migration phase also includes the reporting on the results of the migration to the involved stakeholders. |

ECMS availability during migration

- **Set-up and connectivity phase**

- During this phase some reference data needs to be created, hence necessarily the ECMS GUI is available for both NCBs and CTPYs to perform the necessary activities.(Creation of users with their DN and their role)
- Following this step, the NCBs, CSDs, TPAs and CTPYs users in charge of connectivity tests need to test their A2A and U2A connectivity (when applicable).
- The ECMS GUI will be available for both NCBs and CTPYs to perform the necessary activities
- The Service Desk will be available from 09:00 to 17:30 during connectivity tests

ECMS availability during migration

- Migration weekend phase

- The migration weekend will be processed using a dedicated operational day – still to be defined – based on the migration weekend schedule;
- The change of operational day should be done at the end of the migration;
- The processes available in the scheduler will be released manually by the ECMS Operator upon ECB migration coordinator green light;
- ECMS access (U2A and A2A) , being discussed with ESMIG team, will be available during all the migration week-end;it could be envisaged to migrate outside the regular working hours, this topic is still under study.

Counterparty activities for ECMS migration

Counterparties activities

For the ECMS migration the following activities are expected to be performed by the counterparties:

| | | | |
|--|---|---|--|
| <p>Provide registration form to the NCB</p> <ul style="list-style-type: none">Used to collect the reference data from the counterparty needed to set it as a party in the ECMS as well as to create the U2A Administrator user <p><i>Bilaterally</i></p> | <p>Participate in connectivity testing in production</p> <ul style="list-style-type: none">Used to ensure the CTPY users can access the ECMS GUI as well as to communicate in A2A to the ECMS (if applicable)The CTPY Administrator User shall create the A2A user in order to test the A2A connectivity <p><i>In ECMS</i></p> | <p>Set-up their own A2A and U2A users</p> <ul style="list-style-type: none">The CTPY user administrator shall create its U2A users, including attributing the necessary roles to each <p><i>In ECMS</i></p> | <p>Check that CTPY reference data is correct</p> <ul style="list-style-type: none">CTPYs shall check if its reference data created by the NCB is as expected <p><i>In ECMS</i></p> |
|--|---|---|--|

ECMS migration CTPY related activities

| 1. Send CTPY Registration Form for migration | | | |
|--|---|-----------------------|--|
| <i>What</i> | Send filled in registration form to the NCB | <i>Pre-requisites</i> | <ul style="list-style-type: none"> n/a |
| <i>When</i> | Before start of set-up for connectivity testing phase | <i>Steps</i> | <ul style="list-style-type: none"> CTPY fills and submits to the its NCB user the registration form |
| <i>Who</i> | CTPY | | |

| 2. CTPY Configuration in the ECMS (for connectivity) | | | |
|--|---|-----------------------|--|
| <i>What</i> | Creation of CTPY as ECMS entity in the ECMS | <i>Pre-requisites</i> | <ul style="list-style-type: none"> CTPYs have submitted the registration forms to the NCBs |
| <i>When</i> | Set-up for connectivity testing | <i>Steps</i> | <ul style="list-style-type: none"> NCB sets up CTPYs as ECMS entity NCB creates CTPY Administrator user with its DN for the ECMS Entity NCB allocates the corresponding roles to allow CTPY Administrator user access to the ECMS |
| <i>Who</i> | NCB | | |

ECMS migration CTPY related activities

| 3. CTPY Connectivity | | | |
|----------------------|--|-----------------------|--|
| <i>What</i> | Establish connection via ESMIG between CTPY and ECMS | <i>Pre-requisites</i> | <ul style="list-style-type: none"> CTPYs have completed the CGU subscription. CTPYs are connected to ESMIG. CTPYs are properly configured as ECMS entities |
| <i>When</i> | Set-up for connectivity testing | <i>Steps</i> | <ul style="list-style-type: none"> CTPY Administrator user test U2A connectivity by accessing the ECMS CTPY Administrator user sets up A2A users (if applicable) to test the CTPY A2A connectivity to the ECMS CTPYs test the connectivity with the ECMS (admin.005 / admin.007) – following the steps described in TARGET Services Connectivity Guide After successful connectivity testing, NCB user removes the CTPY access to ECMS until go-live |
| <i>Who</i> | CTPY NCB | | |

ECMS migration CTPY related activities

| 4. NCB creates remaining reference data for its counterparties | | | |
|--|---|-----------------------|--|
| What | NCB parametrises the counterparty collateral and cash accounts, the pools, the authorised operations, the message subscription | Pre-requisites | <ul style="list-style-type: none"> CTPYs have submitted the complete registration forms |
| When | Pre-migration | Steps | <ul style="list-style-type: none"> NCB creates the counterparty contact information NCB creates the collateral and cash accounts of the counterparties NCB creates the pools, with the required characteristics, including authorised monetary policy operations or maximum credit line if applicable NCB creates the banking groups and parametrise the CTPY as a banking group manager or banking group participant if applicable NCB performs the creditor configuration and the Selected Credit Assessment Sources & System for credit claims if applicable NCB confirms the CTPYs message subscription is correct in ECMS |
| Who | NCB | | |
| Note | <ul style="list-style-type: none"> Some data is requested from counterparties through the registration form, such as the contact information. Some data is created in ECMS by NCB based on the data already existing in the NCB local CMSs (e.g. accounts and pools). | | |
| 5. Set-up counterparty users | | | |
| What | Set-up all counterparty users with the respective access rights | Pre-requisites | <ul style="list-style-type: none"> CTPYs are properly configured as ECMS entities NCB has finalised the counterparty parametrisation in ECMS |
| When | Pre-migration | Steps | <ul style="list-style-type: none"> The CTPY Administrator user shall create the remaining U2A users of is counterparty, including the attribution of the correct roles |
| Who | CTPY | | |

ECMS migration CTPY related activities

| 6. CTPY checks and confirms that its data | | | |
|---|---|-----------------------|---|
| What | The CTPY shall check if its reference data in ECMS is as expected | Pre-requisites | <ul style="list-style-type: none"> CTPY users with the correct roles have been configured |
| When | Pre-migration | Steps | <ul style="list-style-type: none"> The CTPY shall check their entity data, pool configuration and message subscription In case of questions, the CTPY shall liaise with its NCB |
| Who | CTPY | | |
| 7. Migration of credit and collateral positions | | | |
| What | The CTPY collateral and credit positions are migrated to the ECMS pools | Pre-requisites | <ul style="list-style-type: none"> CTPY accounts have been set-up NCB accounts have been set-up CTPY pools have been parametrised Reference data for marketable assets are up to date in the ECMS. T2S securities accounts are properly set up in the ECMS T2S settlement window of the day prior to the migration weekend has been closed (i.e. Friday EOD) NCBs have performed a reconciliation of the positions hold on their T2S securities accounts and have a list of positions to migrate |
| When | Migration Weekend | Steps | <ul style="list-style-type: none"> Marketable Asset Positions, Credit Claim Positions, Fixed-term deposits and cash as collateral positions hold on behalf of the CTPY at Friday End of Business day will have to be recorded (in ECMS) as the positions valid in the ECMS for Monday Start of Business Day Open Market Operation (OMO) positions (in scope of the ECMS) for the CTPY at the Friday End of Business day will be recorded in ECMS |
| Who | NCB | | |
| Note | <ul style="list-style-type: none"> The counterparties do not perform any active role in the migration/recording of the positions in the ECMS. Only ongoing OMO shall be migrated into the ECMS – i.e. matured or totally repaid operations shall not be migrated. Marginal Lending positions (either form automatic or request) will not be migrated to ECMS, and their management is handled by CLM until Monday. | | |

ECMS migration CTPY related activities

| 8. CTPY new credit line value | | | |
|-------------------------------|---|-----------------------|--|
| What | The ECMS will recalculate and send to CLM the new suggested credit line value | Pre-requisites | <ul style="list-style-type: none"> • Collateral and credit positions migration has been concluded |
| When | Migration Weekend | Steps | <ul style="list-style-type: none"> • Pool revaluation is executed for Monday business day – i.e., calculation of the new collateral value and of the new OMO outstanding amount • ECMS recalculates the suggested credit line • ECMS sends to CLM a modify credit line message with the new credit line value |
| Who | ECMS Operator | | |