



BANCA D'ITALIA
EUROSISTEMA

Temi di Discussione

(Working Papers)

Looking behind mortgage delinquencies

by Sauro Mocetti and Eliana Viviano

January 2015

Number

999



BANCA D'ITALIA
EUROSISTEMA

Temi di discussione

(Working papers)

Looking behind mortgage delinquencies

by Sauro Mocetti and Eliana Viviano

Number 999 - January 2015

The purpose of the Temi di discussione series is to promote the circulation of working papers prepared within the Bank of Italy or presented in Bank seminars by outside economists with the aim of stimulating comments and suggestions.

The views expressed in the articles are those of the authors and do not involve the responsibility of the Bank.

Editorial Board: GIUSEPPE FERRERO, PIETRO TOMMASINO, PIERGIORGIO ALESSANDRI, MARGHERITA BOTTERO, LORENZO BURLON, GIUSEPPE CAPPELLETTI, STEFANO FEDERICO, FRANCESCO MANARESI, ELISABETTA OLIVIERI, ROBERTO PIAZZA, MARTINO TASSO.
Editorial Assistants: ROBERTO MARANO, NICOLETTA OLIVANTI.

ISSN 1594-7939 (print)
ISSN 2281-3950 (online)

Printed by the Printing and Publishing Division of the Bank of Italy

LOOKING BEHIND MORTGAGE DELINQUENCIES

by Sauro Mocetti * and Eliana Viviano **

Abstract

We examine the delinquency rate for mortgages originated before and after the 2008 financial crisis, using a novel and large representative panel obtained by merging data from tax records and credit registers. First, we estimate the selection into the mortgage market using an exogenous index of local credit supply as exclusion restriction. Second, controlling for selection we estimate the impact of income shocks on the probability of recording a delinquency. We find that since 2008 the selection process operated by banks has led to the halving of the delinquency rate. Conditional on mortgage origination, a job loss nearly doubles the delinquency risk. Estimates uncorrected for selection are subject to severe downward biased.

JEL Classification: D12, E51, G01, G21.

Keywords: mortgage delinquency, income, selection, lending policies.

Contents

1. Introduction.....	5
2. Data and descriptive evidence	8
3. The estimation strategy.....	12
3.1 Heckman selection models	12
3.2 The exclusion restriction	14
4. Results.....	16
4.1 Main findings.....	16
4.2 Robustness	18
5. Conclusions.....	19
References	20
Figures	22
Tables	26

* Bank of Italy Economic Research Unit, Bologna Branch.

** Bank of Italy, Directorate General for Economics, Statistics and Research.

1. Introduction¹

As the U.S. subprime crisis has showed, even a small number of indebted households can produce a considerable turmoil if the sustainability of their debt is in question (Mayer et al., 2009). Thus, understanding the determinants of financial difficulties is crucial not only at the microeconomic level, but also for the stability of the financial system.²

In spite of the relevance of the issue, the empirical evidence on the determinants of debt delinquencies is surprisingly scant and disproportionately focused on the housing equity (i.e. the difference between the market value of the house and the outstanding mortgage debt). The relevance of the housing equity channel, however, is lower in those countries (other than the US), where the institutional setting is less favorable to the strategic behavior of borrowers.³ Indeed, many commentators put emphasis on the deterioration of the quality of the pool of the borrowers as one of the main drivers of the increase in the delinquency rate in the 2000s. Moreover, the large income fluctuations as the ones recorded after the Global Financial Crisis of 2008 are plausibly another important driver of household financial difficulties.

In this paper we address the two following questions: how much do lending policies affect the household delinquency rate? And how much, given selection, do labor shocks impact on individual financial health? To the best of our knowledge, this is the first paper that tries to address the roles of both selection into indebtedness and of income shocks in a unified framework, by exploiting individual heterogeneity.

Our analysis relies on a novel and large dataset obtained by merging data from the Italian tax records (TR) with information on individual financial situation drawn from the credit register managed by the Bank of Italy (CR). The final merged dataset contains roughly 1 million individuals representing a random sample of the population born between 1950 and 1986 (around 1/30 of the Italian population in the same cohort).

¹ We wish to thank David Card, Francesco Manaresi, Paolo Sestito, seminar participants at the University of California, Berkeley and at the Bank of Italy, participants at the Rimini Conference on Economics and Finance and the AIEL conference and, finally, two anonymous referees for very useful suggestions. Paolo Acciari and Elisabetta Manzoli provided excellent help in the construction of the dataset, making this research project possible. Sauro Mocetti is grateful to UC Berkeley's Center for Labor Economics for their generous hospitality during the research on this project. The views expressed in this paper are those of the authors alone and do not necessarily reflect those of the Bank of Italy.

² The microeconomic consequences include credit costs (since delinquent households will suffer worsened credit ratings and larger credit constraints in the future) and non-monetary costs associated with the stigma of default. From a macroeconomic point of view, troubles in the mortgage portfolio of a large bank may lead to a reduction in the domestic credit supply and propagate internationally through the funding markets (Aiyar, 2012).

³ Strategic behavior is commonly referred to the households' propensity to default on mortgages – even if they can afford to pay them – when the value of the mortgage exceeds the value of the house. See Duygan-Bump and Grant (2009) for a discussion on the importance of institutions in affecting household repayment behaviors.

These individuals are followed yearly from 2005 to 2011. Thus, we are able to map out – from TR – the evolution of the individual economic conditions and to observe – from CR – those who originated a mortgage and their subsequent repayment behavior (the possible anomalies being past due, substandard loans and bad loans, which are interpretable in terms of increasing degrees of financial bad health).

From the empirical point of view we analyze, for different cohorts of mortgages, the determinants of household delinquencies after two years from origination using a Heckman probit approach. We believe that this estimation strategy has two advantages. First, it allows us to examine the relationship between income changes and debt delinquencies while controlling for unobserved variables that are systematically related to the likelihood of originating a loan and to the subsequent repayment behavior. Second, the replication of the analysis for different cohorts of mortgages allows us directly assessing whether and to what extent selection matters and, more importantly, whether its role has changed across years.

To model selection we first derive a quantitative measure of credit supply at the local level, following an approach which is in spirit very similar to the one proposed by Greenstone and Mas (2012). Specifically, we estimate a bank-year fixed effect – interpreted as an indicator of the bank’s lending policy in a given year– in a regression where overall household debt at the province-bank-year level is the dependent variable and province-year fixed effects are among the controls. The bank-year indicator of the credit supply is, by construction, nationwide and unrelated to local economic conditions. This indicator has been translated at the local level using the number of branches of each bank in each local credit market as weights. In the selection-corrected main equation we estimate the probability that an individual records a deterioration of her/his financial health as a function of the changes in labor income after the mortgage origination.

We find that the probability of originating a mortgage is significantly correlated with the bank lending policies that were characterized, from 2008 onwards, by a remarkable tightening of the standards applied to the approval decision. This led to a weakening of the supply-driven effect in mortgage origination and a strengthening of the (positive) selection of borrowers, thus reducing the probability of delinquencies for more recent cohorts of mortgages. According to our estimates, because of the positive selection, the delinquency rate of the new borrowers has been roughly 50 per cent lower with respect to the rest of the population (i.e. 3.5 points lower with respect to a predicted probability equal slightly above 6 percent). Before the crisis, on the contrary, the selection effect was not statistically significant from zero and negligible from an economic point of view (0.3 points). Conditional on selection, the exposure of individual financial health to the labor market shocks is sizeable. According to our estimates, a 10 percent drop in earnings is associated to about 5 percent increase in the delinquency rate. In case of job loss the delinquency rate nearly doubles. The correction for sample selection leads to larger negative effects, suggesting that the selection-

uncorrected estimates suffer from a severe attenuation bias (roughly one third of the true parameter).

All in all, our findings highlight the importance of a labor market perspective in examining mortgage origination and debt repayment behavior. Moreover, they provide some insights about the role of institutions and policy design. First, the selection mechanism underlying the mortgage origination strongly affects the quality of the pool of borrowers. Thus, the regulatory framework might play a key role in avoiding an improper attenuation of the screening policies. Second, the household financial difficulties are significantly and strongly related to adverse shocks in the labor market. On this respect, institutions – from unemployment insurance to credit market legislation – might mitigate the negative consequences of these shocks and have much wider effects (e.g. financial stability) than those traditionally thought.

Most of the existing empirical evidence – based on loans data – refers to the US mortgage market (e.g. Deng et al., 2000; Foote et al., 2008; Haughwout et al., 2008; Demyanyk and Van Hemert, 2011; Bajari et al., 2013) and focuses on the evolution of the housing equity. A general finding is that housing equity explains a large part of default behavior and that the sharp reversal in house price dynamics observed in the second half of the 2000s was a critical factor in the recent increase of default rates. The drawbacks of these studies are that they refer to a selected sample of the population (those who have a loan) and they have almost no information on the borrower (i.e. if any, they are collected only at the time of mortgage origination).⁴

A second group of studies – based on surveys – includes Boheim and Taylor (2000), Fay et al. (2002), Diaz-Serrano (2005), Duygan-Bump and Grant (2009), Gathergood (2009), Gerardi et al. (2013) and Guiso et al. (2013). These studies exploit the availability of a richer set of information compared to loan data and (in some cases) explore also the consequences of “trigger events” inside households (such as episodes of unemployment or long-term sickness).⁵ These studies also document that proxies of employment status at the aggregate level (e.g. state or MSA) can lead to a severe attenuation bias that substantially understates the role of unemployment (Gerardi et al., 2013). However, surveys suffer for some limitations. First, the estimation of low-probability events (like household delinquencies) requires sufficiently large sample that

⁴ Some other papers address the repayment behavior for other types of loans like personal loans and credit cards (Domowitz and Sartain, 1999; Gross and Souleles, 2002; Adams et al., 2009), focusing on the role of borrowers’ financial conditions, adverse selection and default costs.

⁵ Fay et al. (2002) use the Panel Study of Income Dynamics (PSID) and find evidence of the strategic behavior of the households (i.e. households are more likely to file for bankruptcy when their financial benefit is higher). Guiso et al. (2013) find that the strategic behavior is affected also by the social stigma associated with the default. Diaz-Serrano (2005), using the European Household Community Panel (ECHP), finds that income volatility is associated to a higher mortgage delinquency risk. Duygan-Bump and Grant (2009) present a descriptive analysis based again on the ECHP and find that household repayment behavior differs across European countries and that this is related to differences in institutions. Gathergood (2009) relies on the British Household Panel Survey (BHPS) and finds that unemployment, long-term sickness and relationship breakdown predict repayment difficulties. Gerardi et al. (2013) use the PSID and find that individual unemployment is a strong predictor of default.

indeed are not available.⁶ Second, surveys do not collect data on repayment difficulties or mortgage arrears on a regular basis. Third, like any survey, the willingness of household to participate and/or to accurately answer to the questions may vary significantly with income and the financial situation itself, thus inducing potential severe biases in the estimates.⁷ Finally, the panel dimension of the survey is typically small, thus exacerbating some of the limitations discussed above. Beyond these drawbacks, none of the existing studies have directly addressed the selection issue. A notable exception is Mian and Sufi (2009) who find more mortgages defaults in areas with a larger share of subprime borrowers, thus highlighting the role of the quality of the pool of borrowers. However, they look at aggregate data while we focus on individual heterogeneity.

Our paper is also related, though to a lesser extent, to the studies that address the strength of credit scoring models in predicting the individual default risk (Boyes et al., 1989; Jacobson and Roszbach, 2003). Indeed, our results, which explicitly deal with selection, suggest that credit scoring models based on parameters' estimates on the pool of accepted applicants can be severely biased (i.e. their ability to predict the exposure to income risk can be overrated).

The remainder of the paper is organized as follows. In section 2 we describe the data. In section 3 we present the empirical strategy. Results and robustness checks are discussed in section 4. Section 5 briefly concludes.

2. Data and descriptive evidence

We built a large and representative panel of Italian population of tax payers, merging confidential data from TR and CR. The dataset contains information for roughly 1 million individuals, randomly selected among those born between 1950 and 1986 and who filled tax record at least once from 2005 to 2011. Therefore, our sample includes all the employed people in this very large cohort, almost all the unemployed people (i.e. those who experience a transition from employment to unemployment and vice versa) and a fraction of inactive people – for instance, non-labor-income earners (e.g. pensions or rents) and youngsters before and after they enter the labor market. The sample is followed on a yearly base.

From TR we draw information on after-tax income by income sources and main demographic characteristics (age, gender, country of birth, city of residence, etc.). Income items reported on personal tax returns include salaries and pensions, self-

⁶ As Fay et al. (2002) and Duygan-Bump and Grant (2009) acknowledge, an important limitation of their studies is that they are based on a small number of bankruptcy filings and arrears, respectively.

⁷ One reason is that households tend to guard their financial privacy jealously. In Fay et al. (2002) the fraction of households that filed for bankruptcy in the PSID is less than half the national rate. Duygan-Bump and Grant (2009) recognize that in the ECHP arrears are self-reported and, likely, under-reported; the definition of arrears itself is vague, including a wide range of borrowers' behaviors, from bankruptcy to being only a few weeks behind on their payments. Acciari et al. (2014) find evidence of under-reporting in the delinquency rate in the Survey of Household Income and Wealth (SHIW) in Italy.

employment and unincorporated business income, real estate income, and other smaller income items. Tax declaration covers capital income incompletely and excludes most capital gains. There is also a fraction of people who are excluded from TR because of their very low income (e.g. people receiving social pensions and people with yearly revenues from land and buildings lower than 500 Euros).

The CR is managed by the Bank of Italy and collects data on the (residual) debt and debt repayment behavior from all banks and financial intermediaries operating in Italy. More precisely, CR records all debts of individuals, firms, and public entities above 75,000 Euros until December 2008 and above 30,000 afterwards. We focus only on households and, for comparability, on debts larger than 75,000 Euros that are mainly (but not necessarily) borrowed to buy a house and this is why we refer, for simplicity, to the mortgage market.⁸ The banks assign the credit “health status” to their clients and each other bank can access to individual data in order to evaluate individual credit risk. Banks have to report changes in debt and health status each month. Credit status, assigned according to official guidelines, can take the following values: “performing loan”; “past due”, “substandard loan” or “bad loan”. Bad loans (*sofferenze*) are loans which are deemed to be uncollectable on the basis of relevant circumstances; substandard loans (*incagli*) are loans with a well-defined weakness and the paying capacity of the borrower is not assured; finally, past due (*crediti scaduti*) are loans whose payments are past due by three months or more.⁹ The consequences of being registered as bad borrowers are severe, as individuals incur in the substantial risk of being excluded from the credit market. In this paper we observe the credit status at the end of each year.

Our dataset has also some drawbacks. First, we do not observe households but individuals. Therefore, our estimates of the relationship between income changes and delinquency do not take into account the fact that the negative consequences of income losses for individuals might be compensated through intra-household redistribution of resources. This means that, if any, we underestimate the effects of income shocks. Second, from TR we do observe income, while we do not have information on wealth. However, in Italy real assets account for nearly two thirds of total wealth and from TR we observe the real estate incomes, thus we are implicitly able to (partially) control for individual wealth. Third, we do not observe the value of the house and we proxy it – as commonly done – with the average house price at the municipality level.¹⁰ Fourth, as already mentioned, TR does not include information on people with very low income from sources other than labor income. This restriction, however, is not expected to

⁸ In Italy mortgages represent a sizeable part of the credit market, around two thirds of the total loans to the households.

⁹ See Acciari et al. (2014) for more details on the data and Bonaccorsi di Patti and Felici (2008) and Felici et al. (2012) for a descriptive analysis on the mortgage market in Italy.

¹⁰ Other than house prices, the dataset has been enriched with other variables capturing local socio-economic conditions, such as the population density in the municipality where the individual resides, and the employment rate in the local labor market (LLM) where the individual lives and work.

affect our main results, as these individuals are unlikely to get a mortgage (see Acciari et al. 2014 for analysis on the distribution of mortgages by income quantiles).

Main descriptive statistics are reported in Table 1. On average, about 80 percent of the sampled individuals fill the tax record with a positive income. Among those, three out of four are in paid employment (i.e. their main source of income comes from dependent employment), 11 and 5 percent are mainly self-employed and rentiers, respectively. The average after-tax income from labor (paid employment and self-employment income) is about 17,300 Euros and the ratio between the interquartile range (the difference between the upper and the lower quartile) and the median is nearly 80 percent, thus suggesting a high heterogeneity in the earning distribution. The remaining 20 percent of the sample includes both unemployed and inactive individuals with zero income. Looking at the main socio-demographic characteristics, the average age is 40 years old. The fraction of female (45 percent) is, as expected, lower than that of males, due to their lower labor market participation. The fraction of foreign-born (16 percent) is higher than the national average, likely reflecting both the higher employment rate of foreigners and the exclusion (in our sample) of the more aged cohorts. Finally, 30 percent of the individuals have (at least) a dependent child.

In a longitudinal perspective, labor market conditions deteriorated from the financial crisis on, likely weakening the housing demand. The employment rate (i.e. individuals with strictly positive labor income over population) decreased by one percentage point from the period 2005-2007 (3 years before the crisis) to 2008-2010 (3 years during the crisis). Looking at employment transitions, 73 percent of non-employed individuals remain in the same status in the next year while 7 of the employed become non-employed; the corresponding figures before the crisis were 71 and 6 percent, respectively. Among employed individuals, mean earnings experienced a drop of nearly 5 percent with respect to 2007 in real terms (Figure 1); moreover, the decrease in labor income has been accompanied by an increase in the earnings dispersion.

Within our sample one tenth of the individuals originated a mortgage between 2005 and 2011. The average (residual) debt for new debtors is 140,000 Euros. Among them, the fraction of individuals recording a bad loan, a substandard loan or a past due are, respectively, 2.6, 1.3 and 1.9 percent; relatively to overall population the same figures are 0.4, 0.1 and 0.2 percent.¹¹ Thus, mortgage household delinquencies are extremely rare events, though they may have large economic consequences.

Taking again a longitudinal perspective, there has been a substantial improvement in the delinquency rates of mortgages originated from 2008 onwards (Figure 2). Namely, less than 2 percent of mortgages originated in 2009 recorded a delinquency

¹¹ See Acciari et al. (2014) for a comparison between our statistics and those drawn from the SHIW – the survey commonly used for the analysis on the financial situation of the Italian households. See also Magri and Pico (2012) for descriptive evidence on household debt in Italy after the 2008 crisis.

within the next two years while the corresponding figures for mortgages originated before the financial crisis were well above 5 percent.¹²

In Table 2 we report a descriptive assessment about who are the individuals recording (to a greater or lesser extent) financial anomalies. The results are purely descriptive because we are not considering sample selection (we observe delinquencies only for those who originated a mortgage) and we are omitting important variables that may affect individual financial repayment behavior, like income shocks and/or local variables. Independently from the definition of delinquency we adopt, males and foreigners have, on average, higher propensity to fail the payments. Among the occupations self-employed have higher likelihood of recording a delinquency than employees, while the reverse is true for rentiers (i.e. those with real estate rents as main source of income). Finally, the delinquency rate is negatively correlated with labor incomes.

The pool of borrowers has changed over the years both in quantity – as can be concluded by looking at the ratio between the number of new borrowers and the reference population – and in quality, as suggested by the predicted probability of recording a delinquency (based on the regression presented in Table 2). According to our data, new borrowers in the mortgage market were about 2 percent of the reference population between 2005 and 2007 and sharply decreased to around 1.5 percent in the subsequent three years (Figure 3a). As far the quality of new borrowers is concerned, they have, on average, a lower predicted probability of delinquency (Figure 3b), suggesting that debtors are positively selected with respect to the remainder of the population (e.g. they disproportionately belong to higher income classes). However, the relative quality of new borrowers changed over the years. Namely, after the 2008 crisis the predicted probability of delinquency for the whole population increased, while the same figure for the group of new borrowers progressively decreased.

In Figure 4 we examine the change in the selection of borrowers looking at the main socioeconomic characteristics. Borrowers' labor income is higher compared to the rest of the population; however, this earning-gap increased from around 8,500 Euros in the period 2005-2007 to nearly 10,000 Euros in the period 2008-2010 (Figure 4a). Moreover, compared to the rest of the population, after the crisis new borrowers were older (Figure 4b) and with a slight prevalence of females (Figure 4c). Finally, the fraction of foreign-born among new borrowers decreased from 14.4 percent to 9.0

¹² The sharp decline in the mortgage delinquency rate can be partially related to the moratoria agreed between banks and consumers, which allowed mortgage holders in difficulty to suspend temporarily payment of installments. Unfortunately our data do not allow us controlling for these agreements. However, according to Bank of Italy (various years), these interventions accounted for a small fraction of the mortgage loans with overdue installments; moreover, the majority of loans with installments in arrears at the start of the moratorium returned to a regular schedule of repayment. Finally, since the aim of our paper is to estimate the probability of delinquency, even if the effects of moratoria were large, they would imply that we are underestimating the delinquency rate. For these reasons we believe that the unobserved impact of the moratoria is not a big issue in our case.

percent, widening the gap with respect to the corresponding figure in the rest of population (Figure 4d).

Many other variables may have affected selection. They may be unobservable for the econometrician and observable for the local bank manager managing the loan approval process. They may include additional sources of income not recorded in the tax declarations, the type of the job contract, the strength of the family ties (representing a source of monetary and non-monetary support to the borrower), the market value of the house and other soft information related to the borrower creditworthiness. In the next section we discuss how to address these issues with a more rigorous empirical framework.

3. The estimation strategy

We examine how mortgage delinquencies react to income changes, conditional on selection of individuals into indebtedness. To this end we rely on a standard Heckman approach that has been repeated for different cohorts of mortgages, thus directly assessing the time-varying selection.

3.1 Heckman selection models

Let i be an individual who must choose on mortgage origination (m) at time t and, eventually, on subsequent delinquent behavior (d) between time t and time $t + k$. The propensity to originate a mortgage and to be delinquent (conditional on having originated a mortgage) can be represented by two latent variables:

$$y_{m,i,t}^* = x_{i,t}\delta + \varepsilon_{m,i,t} \quad (1)$$

$$y_{d,i,t+k}^* = z_{i,t+k}\gamma + \varepsilon_{d,i,t+k} \quad (2)$$

They are both expressed as the sum of an observed component ($x_{i,t}$ and $z_{i,t+k}$, respectively) and an unobserved random component ($\varepsilon_{m,i,t}$ and $\varepsilon_{d,i,t+k}$, respectively). Of course, individual propensities are unobservables. However, the origination of the mortgage is observable and can be defined as a binary outcome:

$$y_{m,i,t} = \begin{cases} 1 & \text{if } \varepsilon_{m,i,t} > -x_{i,t}\delta \\ 0 & \text{otherwise} \end{cases} \quad (3)$$

Subsequently, conditional on having got a mortgage, the repayment behavior can be defined as:

$$y_{d,i,t+k} = \begin{cases} 1 & \text{if } \varepsilon_{d,i,t+k} > -z_{i,t+k}\gamma \\ 0 & \text{otherwise} \end{cases} \quad (4)$$

Namely, $y_{d,i,t+k}$ is observed only when $y_{m,i,t} = 1$, i.e. for a non-random sample of the population. Moreover, we let $y_{d,i,t+k}$ be equal to 1 if the credit status of individual i records a deterioration within 2 years after mortgage origination and 0

otherwise. Deterioration means the switch from a status of performing loan to a delinquency (bad or substandard loans or past due). We also assume that the error components $\varepsilon_{m,i}$ and $\varepsilon_{d,i}$ are correlated across individuals and are drawn from a bivariate normal distribution with a correlation coefficient ρ .

Since different types of repayment delinquencies can be interpreted in terms of increasing degree of financial bad health, we also rely on an ordered probit with sample selection. The latter can be thought as an extension of the Heckman probit. Equation (4) is thus re-written as:

$$y_{d,i,t+k} = j \text{ if } c_{j-1} < y_{d,i,t+k}^* < c_j \quad (5)$$

In words, the latent variable $y_{d,i,t+k}^*$ is related to the outcome $y_{d,i,t+k}$ through the observational rule (5), where j represents the hierarchically ordered alternative (i.e. performing loan, past due, substandard loan and bad loans) and c is a set of strictly increasing thresholds that partition $y_{d,i,t+k}^*$ into j exhaustive and mutually exclusive intervals. Selectivity effects are allowed to operate again through the correlation between the latent regression errors.

The set of variables z_i includes controls for initial conditions (i.e. variables observed at the time of mortgage origination) and controls for changes in individual variables after mortgage origination. The set of variables x_i includes the same variables observed at the time of mortgage origination included in z_i , and an exclusion restriction. The latter is a variable affecting the probability to get a mortgage but which is unrelated to household repayment behavior in the subsequent years and it is necessary to identify the model.

Among the initial conditions observed at time t (i.e. variables that may affect both the probability of originating a mortgage at time t and the ability to repay it later) we include the log of after-tax labor income, the log of income from rents (a proxy also for individual wealth), dummies for the occupational status (identified with the main source of income), age and age squared, dummies for gender, country of birth (i.e. natives and foreign-born) and the presence of dependent children. The set of initial conditions includes also local level variables, such as the log of house price in the city where the individual resides, the employment rate and the population density at the time of mortgage origination. Finally, dummies for geographical areas capture other unobserved local variables.

In the main equation, i.e. the probability of being delinquent within two years, we also include variables capturing changes occurred after mortgage origination such house price change (that may affect the propensity to repay the debt) and labor income changes (that may affect the capability to repay the debt). Specifically, the labor income change is measured as $(y_{t+2} - y_t)/(0.5 \cdot y_{t+2} + 0.5 \cdot y_t)$. The variable varies within the interval $[-2; 2]$ and captures changes occurred with respect to the mortgage origination year; extreme values -2 and 2 capture transitions from employment to non-

employment status occurred within this time interval and vice versa (i.e. a change from positive/zero labor income to zero/positive labor income).¹³

3.2 The exclusion restriction

Our exclusion restriction is a quantitative index of credit supply at the local level, aimed at capturing the orientation of bank lending policies in the local credit market where the individual lives. In order to identify the credit supply orientation at the local level, we proceed in two steps.

First we run the regression:

$$m_{b,p,t} = \pi_{p \times t} + \pi_{b \times t} + \mu_{b,p,t} \quad (6)$$

where the dependent variable is the log of mortgages by bank b in province p at time t . The set of dummies $\pi_{p \times t}$ is defined for each province-year and captures any variable varying at the province-year level (e.g. local economic cycle). The variable $\pi_{b \times t}$ is a set of dummies for bank-year measuring the time-varying bank lending policy. This is a pure supply factor since the aggregate mortgage demand is controlled with the province-year fixed effects. Last, $\mu_{b,p,t}$ is the error term. Regression (6) has been run on a different dataset, drawn from the Bank of Italy, and referring to the universe of bank loans to the household sector.¹⁴ The identification of $\pi_{b \times t}$ is guaranteed by the presence of multiple banks in each province (i.e. multiple banks exposed to the same local demand) and the presence of each bank in multiple provinces (i.e. multiple provinces exposed to the same bank's supply condition).

The bank-year $\pi_{b \times t}$ variable is the main input for the construction of the credit supply index used as exclusion restriction. To check the goodness of our bank-year indicator we have first examined its correlation with the “diffusion index” provided by the Bank Lending Survey of ECB (BLS), which collects qualitative information on Euro area main credit supply, by the mean of a questionnaire to the largest banks, and it is used to construct various indexes of banks' lending policies.¹⁵ The correlation between the latter and $\pi_{b \times t}$ for the largest Italian banks estimated through equation (6) is

¹³ A virtue of this measure is that it facilitates an integrated treatment of transitions from employment to unemployment and changes in income for those who continue to be employed. Moreover, this variable is related to the conventional income growth rate measure (the two measures are approximately equal for small growth rates), while delivering a variable with a much smoother distribution.

¹⁴ More precisely, the data are drawn from the Bank of Italy Supervisory Report database, collecting data on the balance sheets (including loans) of all banks operating in Italy. We preferred to use data on the universe of loans to the household sector instead of data on mortgages drawn from our database because our goal is to build an aggregate indicator that captures lending policies orientation of all Italian banks operating in each local credit market. Moreover, since we identify the banks' lending policies by the use of a model with fixed-effect, we measure changes in the stocks of banks' loans, which is indeed a good proxy for changes in banks' supply.

¹⁵ The diffusion index is the (weighted) difference between the share of banks reporting that credit standards have been tightened and the share of banks reporting that they have been eased. See e.g. <http://www.ecb.europa.eu/stats/money/surveys/lend/html/index.en.html>

reported in Figure 5. As expected the two lines mirror each other. Indeed, positive values of the diffusion index suggest a tightening of credit standards applied to loan approval decisions and lower values of $\pi_{b \times t}$ indicate less expansive lending policy of the banks.

In Table 3 we perform a statistical test for the predictive power of our bank-year credit supply indicator. Namely, we consider the period 2005-2010 and we regress the log of loans of each bank to the household sector on $\pi_{b \times t}$; the specification also includes bank fixed effects, to capture time-invariant factors that characterize each bank, and year dummies, to capture trend common to all banks. The credit supply indicator enters with the positive sign, as expected, and is highly significant. The impact is also substantial from an economic point of view since one standard deviation in the bank-year indicator leads to an increase of nearly half the standard deviation in the log of loans.

Second, since our aim is to get an index of credit supply at the local level, under the assumption that the individual probability to get a mortgage is affected by the credit policy of banks located in the place he/she lives, the bank-year dummies $\pi_{b \times t}$ are aggregated at the local level using, as weights, the number of branches of each bank in the local labor market (LLM, since, differently from data on loans we have data on branches with this higher level of detail¹⁶) at time $t - 1$. Formally:

$$CS_{l,t} = \sum_b \frac{branches_{b,l,t-1}}{branches_{l,t-1}} \cdot \pi_{b \times t} \quad (7)$$

where $CS_{l,t}$ captures the orientation of the credit supply in the local credit market l at time t and it is expected to be positively related to the likelihood of originating a mortgage in the same local credit market at the same year (i.e. intention to treat). The sources of variability are the substantial heterogeneity in lending policies across banks and the variation of banks' market share at the local level.

An implicit assumption of the exclusion restriction is that the banks' nationwide lending policies ($\pi_{b \times t}$) are unaffected by unobserved factors at the local level. This assumption might be violated when some province markets are relevant for banks' lending policies. This may happen both when the province is large with respect to the national credit market or when the bank's credit market is very concentrated a given territory (e.g. in the case of small banks). Moreover, some banks might systematically sort into specific provinces anticipating local future prospects. These violations of our assumption would undermine the validity of the research design. In order to address these issues and to reinforce the exogeneity of the indicator, the bank fixed effects used to build the aggregate indicator for the LLM l belonging to province p are estimated on

¹⁶ LLM is a geographic unit represented by cluster of municipalities and built on the basis of intra-municipality daily commuting patterns. LLMs in Italy are more numerous than provinces and they are arguably closer to the definition of local credit market. However, since we do not have data on loans by LLM we cannot estimate equation 3 at the level of LLM.

a regression sample including all province but p . This strategy allows avoiding that unobservable shocks in province p affect the lending policies of banks operating in that province.

Figure 6 reports the distribution of credit supply index across LLMs and over time. There is a remarkable heterogeneity of the index at the local level: the ratio between the interquartile range and the median is about 70 percent. Moreover, from the financial crisis onwards there was a shift towards left of the distribution of the index, suggesting a tightening of the credit supply conditions at the local level. Unsurprisingly, the local credit supply explains a significant fraction of the reduction in the entry into the mortgage market between the years before and after the financial crisis. Table 4 displays the Oaxaca-Blinder decomposition of this difference. According to our estimates, individual variables explain about 20 percent of the reduction in the entry rate (column I). The explained fraction of the gap increases only marginally when adding local variables (column II) and significantly when adding $CS_{l,t}$ (column III). Local lending policies, as captured by our proxy, account for roughly one third of the explained gap. Since this index is unrelated by construction to current local conditions, it provides an exogenous source of variation for the probability to get a mortgage, randomizing selection into indebtedness.

4. Results

4.1 Main findings

We consider different cohorts of mortgages. For each cohort, we first model the selection process driving the decision to become indebted, including standard personal characteristics and the credit-supply index described in Section 3. Second, we focus on income changes, i.e. changes occurred after the mortgage origination, and their association with the probability of default. The two steps are estimated simultaneously by maximum likelihood using a standard Heckman probit model. For sake of clarity, we comment the two steps separately.

In Table 5 we report the marginal effects of the probit in the selection equation. We consider cohorts of mortgages from 2005 to 2009 because, as our dataset is limited to 2011, these are the only ones we re-observe after two years from mortgage origination. Income is positively correlated with the probability of becoming indebted, suggesting that, on-average, indebted people are richer than the rest of the population. The estimates also suggest that the fraction of youngsters and foreign-born decreased over time. The credit supply indicator $CS_{l,t}$ enters, as expected, with a positive effect and it is highly significant in all years, even if in 2008 and 2009 its marginal impact declined, probably due to the banks' lower propensity towards lending.

In Tables 6 we report the marginal effects of the main equation, where the dependent variable is a wide definition of financial bad health, which includes bad

loans, substandard loans and past due.¹⁷ Moreover, the table reports two different estimates for each cohort, the first being from a simple probit on the selected sample of borrowers and the second from the Heckman probit, thus taking into account the selection process into the mortgage market.

Consider first the coefficient of the selectivity term λ , which is always negative, but it is significantly different from zero only for the two more recent cohorts (2008 and 2009). Moreover, also the absolute value of the coefficient increases, reaching its peak, again, for more recent cohorts of mortgages. The sign and the magnitude of the impact of λ depend on the parameter ρ that captures the correlation between ε_i and μ_i . Therefore there are unobserved (to the econometrician) factors positively affecting mortgage origination and negatively correlated with the probability of observing financial difficulties (or vice versa). This evidence, as expected, signals positive selection of the borrowers on unobservables. Moreover, the relevance of those factors was negligible (both economically and statistically) before the financial crisis and sizeable after the crisis. According to our estimates (i.e. multiplying the average Inverse Mill's ratio by its marginal effect at the average), the selection process in mortgage origination reduced the probability of default by around 50 percent in the period 2008-2009, which corresponds to a 3.5 points decrease in the delinquency rate. Before the crisis the corresponding figures, though not statistically significant, were much lower in magnitudes (less than 10 per cent and 0.3 points, respectively).

As far as labor income changes are concerned, the parameter of interest varies between 0.2 and 0.3. Therefore, a 10 percent negative income change leads to an increase between 0.2 and 0.3 percentage points in the probability of delinquency, which roughly corresponds to a 5 percent increase in the observed delinquency rate. In case of job loss (which, according to our variable, corresponds to a -200 percent decrease in earnings) the delinquency rate nearly doubles. Also initial conditions matter. Having an income 10 percent higher at the mortgage origination reduces the delinquency rate by around 0.1-0.2 percentage points.

The correction for sample selection, with respect to the simple probit model, leads to larger negative effect for both income variation and income at origination. The size of the bias for the two more recent cohorts is between 30 and 40 percent of the true parameter. Therefore, unobserved factors are positively related to income and their omission may severely bias the estimates.

¹⁷ The wide definition is our preferred indicator. Indeed, the latter indicates with certainty the existence of a financial difficulty, while the same is not true for substandard and bad loans that are affected, to some extent, by a subjective evaluation of the lender. For instance, the transition from past due to bad loan can be delayed by internal organizational procedures or because the lender voluntarily allowing the lengthening of the delinquency period. In other words, while the existence of an anomaly unambiguously identifies a financial difficulty, the degrees of anomaly depend also on some external factors that may have little to do with it.

4.2 Robustness

To check the robustness of our findings we enrich the previous specifications along several directions.

In Table 7, we use the same set of variables in both the selection and the main equation (with the exception of the exclusion restriction). Indeed, income and/or house price changes after mortgage origination can be partly anticipated (at the time of mortgage origination) and, therefore, they may affect selection into indebtedness. According to our findings, income changes are positively correlated with the probability of originating a mortgage. However, and more importantly, the key findings on the role of selection and on the sensitivity of the delinquency rate to income shock are unchanged.

In Table 8, we enrich the specification with further controls. Namely, we add two individual-level variables: the log of the debt and a dummy for debts that are jointly held by at least two individuals. Both variables are observed, by definition, only for individuals with a debt and, therefore, may be included only in the main equation. They are plausibly correlated with individual riskiness and, therefore, may capture factors affecting both the probability of recording a delinquency and the probability to get a mortgage. Moreover, we add a variable capturing changes in the delinquency rate at the bank level. Indeed one may argue that easier credit conditions at time t may affect future banks' propensity to report and address household financial difficulties and, consequently, the individual probability of default. Finally, we add local-level variables that are aimed at capturing unobserved features of the local financial development. The first is the density of bank branches (i.e. branches per square meter), used as a proxy for the accessibility of the banking system. The second is the Herfindahl index, which proxies the degree of banking competition at the local level. Both variables may be correlated to both the probability of originating a mortgage and of recording a delinquency and are included in both the selection and the main equation. We find that higher debts increase financial vulnerability while joints debts reduce it; among the other variables, higher bank concentration and lower branch density reduce the probability of mortgage origination though they are substantially unrelated to individual delinquency rate. As far our key variables, the selectivity term continues to be significant (and with the expected sign) only for the more recent cohorts and the coefficients of explanatory variables in the main equation are qualitatively similar to those of our baseline specification.

Our main estimates, as already mentioned, refer to all loans larger than 75,000 Euros, independently from the motivation of the loan. They may also include loans of self-employed people to finance their activities. Moreover, income from self-employment is severely underreported in tax records (Marino and Zizza, 2011). To control for this sources of heterogeneity and mis-measurement, which could affect the analysis of both the selection process and the repayment behavior, in Table 9 we

replicate our estimates in a sub-sample which excludes self-employed. The sign and the size of the estimated coefficients are again qualitatively similar.

Finally, in Table 10 we adopt a different empirical strategy, relying to an ordered probit with selection correction. We exploit the fact that the performing status of loans can be hierarchically ordered, going from the status of (1) performing loan to, in increasing order of financial bad health, (2) past due, (3) substandard loan and (4) bad loan (see also equation 5). The results should be interpreted with caution since the attribution to a certain financial status partly depends on idiosyncratic bank features. However, our key findings are qualitatively similar to those discussed above.

5. Conclusions

Why some indebted individuals stop repaying debt? In institutional settings where there is limited room for strategic behavior and the consequences of being registered as delinquent are severe, other factors may play a relevant role.

On this respect, our paper sheds light on two important and almost neglected issues: selection into the mortgage market and income changes after mortgage origination. According to our findings, the impact of labor market income changes is sizeable, as an episode of unemployment more than doubles the individual delinquency rate. Second, the tightening of the selection process from the Global Financial Crisis on largely explains the trend in delinquency rates of the most recent cohorts of mortgages. Neglecting selection mechanisms may severely bias the estimates of individuals' credit risk.

The huge impact of selection and job loss we found in a country like Italy, traditionally characterized by prudent lending policies and strong employment protection for permanent workers calls for further scrutiny of these channels also in other countries, where both employment protection and lending policies are less tight. Our results also suggest that instruments designed to absorb the consequences of income shocks, like for instance the unemployment benefit, tax cuts and in general any policy which relaxes household financial constraints, may have positive effects not only on household consumption, but also on financial stability as they reduce the probability of default. Finally, our results suggest that credit risk models as those typically used by lenders, may systematically underestimate the relationship between income and the probability of default: this may lead to loan mispricing and sub-optimal risk composition of the borrowers.

References

- Acciari, P., E. Manzoli, S. Mocetti and E. Viviano (2014), La vulnerabilità finanziaria: un'analisi per classi di reddito, *Moneta e Credito*, forthcoming.
- Aiyar, S. (2012), From financial crisis to Great Recession: the role of globalized banks, *American Economic Review: Papers & Proceedings*, 102: 225-230.
- Adams, W., L. Einav and J. Levin (2009), Liquidity constraints and imperfect information in subprime lending, *American Economic Review* 99: 49-84.
- Bajari, P., S. Chu, D. Nekipelov and M. Park (2013), A dynamic model of subprime mortgage default: estimation and policy implications, NBER working paper 18850.
- Bank of Italy (various years), *Annual Report*, Rome.
- Boheim, R. and M.P. Taylor (2000), My home was my castle: evictions and repossessions in Britain, *Journal of Housing Economics*, 9: 287-319.
- Bonaccorsi di Patti, E. and R. Felici (2008), Il rischio dei mutui alle famiglie in Italia: evidenza da un milione di contratti, *Questioni di Economia e Finanza* n. 32.
- Boyes, W.J., D.L. Hoffman and S.A. Low (1989), An econometric analysis of the bank credit scoring problem, *Journal of Econometrics*, 40: 3-14.
- Deng, Y., J.M. Quigley and R. van Order (2000), Mortgage terminations, heterogeneity, and the exercise of mortgage options, *Econometrica*, 68: 275-307.
- Demyanyk, Y. and O. van Hemert (2011), Understanding the subprime mortgage crisis, *Review of Financial Studies*, 24: 1847-1880.
- Diaz-Serrano, L. (2005), Income volatility and residential mortgage delinquency across the EU, *Journal of Housing Economics*, 14: 153-177.
- Domowitz I. and R.L. Sartain (1999), Determinants of the consumer bankruptcy decision, *Journal of Finance*, 44:403-420.
- Duygan-Bump, B. and C. Grant (2009), Household debt repayment behavior: what role do institutions play? *Economic Policy*, 24: 107-140.
- Fay, S., E. Hurst and M.J. White (2002), The household bankruptcy decision, *American Economic Review*, 92: 706-718.
- Felici, R., E. Manzoli, e R. Pico (2012), La crisi e le famiglie italiane: un'analisi microeconomica dei contratti di mutuo, *Questioni di Economia e Finanza* n. 125.
- Foote, C., K. Gerardi and P. Willen (2008), Negative equity and foreclosure: theory and evidence, *Journal of Urban Economics*, 64: 234-245.
- Gathergood, J. (2009), Income shocks, mortgage repayment risk and financial distress among UK households, working paper.
- Gerardi, K., K.F. Herkenhoff, L.E. Ohanian and P.S. Willen (2013), Unemployment, negative equity, and strategic default, working paper.

Greenstone, M. and A. Mas (2012), Do credit market shocks affect the real economy? Quasi-experimental evidence from the Great Recession and ‘normal’ economic times, MIT working paper.

Gross, D.B. and N.S. Souleles (2002), An empirical analysis of personal bankruptcy and delinquency, *Review of Financial Studies*, 15: 319-347.

Guiso, L., P. Sapienza and L. Zingales (2013), The determinants of attitudes towards strategic default on mortgages, *Journal of Finance*, 68: 1473-1515.

Haughwout, A., R. Peach and J. Tracy (2008), Juvenile delinquent mortgages: Bad credit or bad economy? *Journal of Urban Economics*, 64: 246-257.

Jacobson, T. and K. Roszbach (2003), Bank lending policy, credit scoring and value-at-risk, *Journal of Banking and Finance*, 27: 615-633.

Magri, S. and R. Pico (2012), L’indebitamento delle famiglie italiane dopo la crisi del 2008, *Questioni di Economia e Finanza* n. 134.

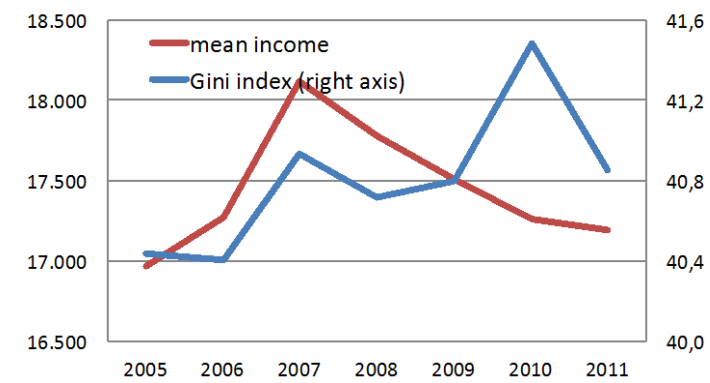
Marino, M.R. and R. Zizza (2011), The personal income tax evasion in Italy: an estimate by taxpayer’s type, in M. Pickhardt and A. Prinz (eds.), *Tax evasion and the shadow economy*, Edward Elgar Publishing.

Mayer, C., K. Pence and S.M. Sherlund (2009), The rise in mortgage defaults, *Journal of Economic Perspectives*, 23: 27-50.

Mian, A. and A. Sufi (2009), The consequences of mortgage credit expansion: evidence from the U.S. mortgage default crisis, *Quarterly Journal of Economics*, 124: 1449-1496.

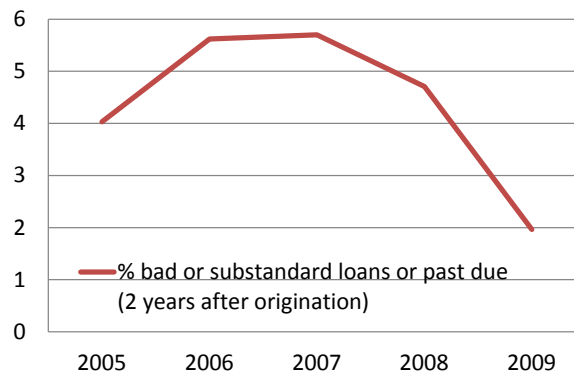
Figures

Figure 1. Income trend



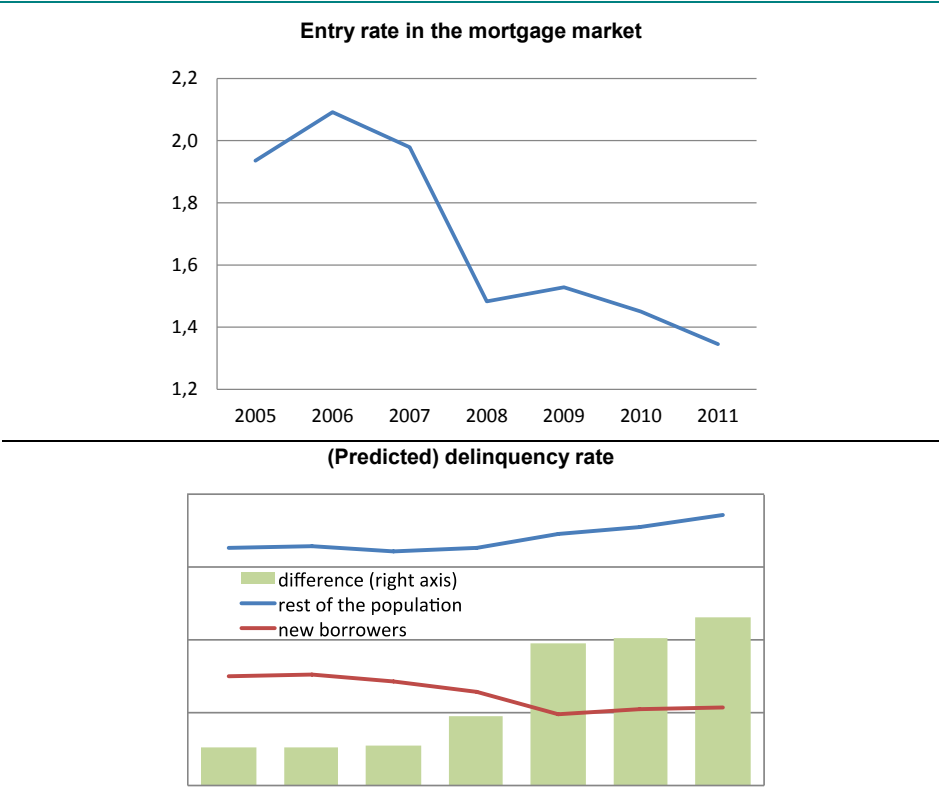
We consider only individual with strictly positive labor income and in the age-bracket 25-54.
Source: authors' elaborations on data from TR and CR.

Figure 2. Mortgage delinquency rate



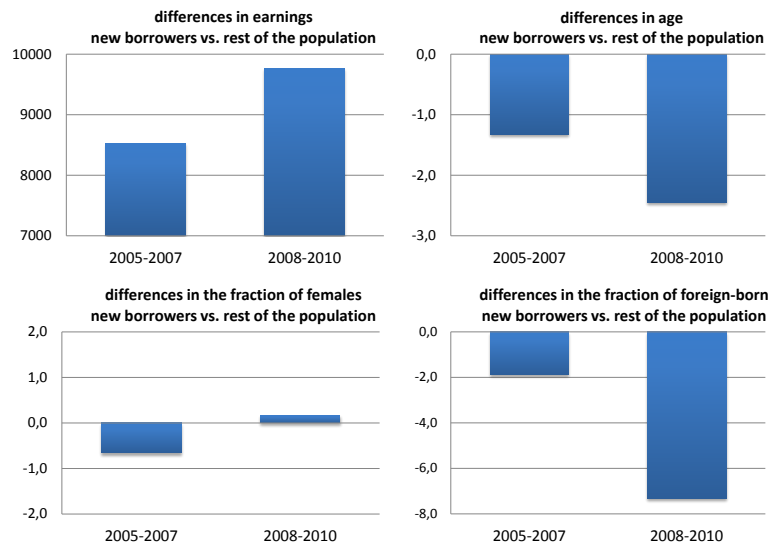
Delinquency rates for different cohorts of mortgages (years in the x-axis refer to origination).
Source: authors' elaboration on data from CR.

Figure 3. Quantity and quality of new borrowers



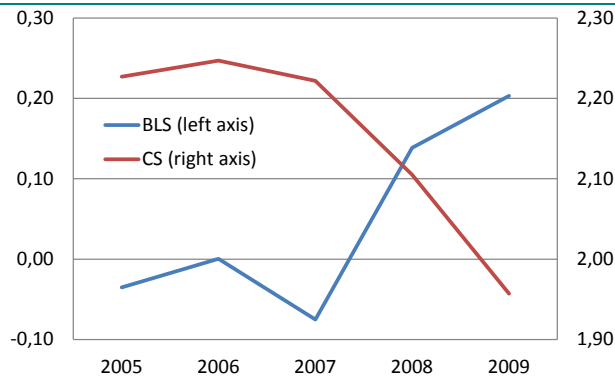
The entry rate (top panel) is the ratio of new borrowers over population. The predicted delinquency rate (bottom panel) is estimated from a regression where the dependent variable is equal to 1 if the borrower has a past due or a substandard or bad loans and 0 otherwise and the explanatory variables are age, gender, birth of country, occupation and incomes; the predicted probability of delinquency is computed for the new borrowers and the rest of the population, with histograms measuring the gap between the two groups. Source: authors' elaborations on data from TR and CR.

Figure 4. Positive selection of new borrowers before and after the crisis



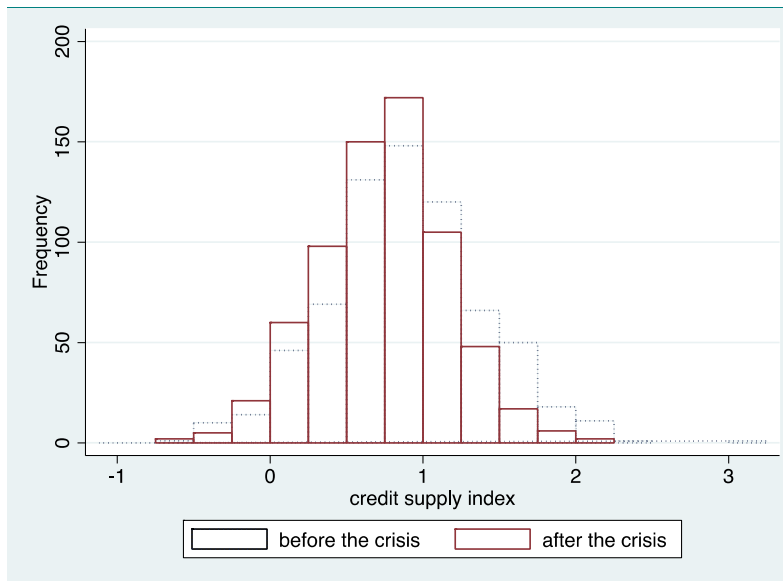
The histograms represent the difference in the observables between the new borrowers and the rest of the population; for each observable differences are computed for the years before and after the crisis.

Figure 5. BLS and the credit supply index



The blue line represents credit supply conditions as measured by the BLS (yearly values from Figure 4); positive (negative) values indicate a tightening (easing) of credit conditions. The red line is the credit supply index for the largest Italian banks as estimated from equation (6); higher (lower) values indicate more (less) expansive lending policies. Source: authors' elaboration on data drawn from Bank of Italy.

Figure 6. Credit supply index before and after the crisis



Source: authors' elaboration on data drawn from Bank of Italy.

Tables

Table 1. Descriptive statistics

	Mean	St. dev.	25°	75°
<i>Individual variables:</i>				
% of individual with positive income	80.0	40.0	1	1
Income (thousands of Euros)	17.3	23.4	9.2	21.5
% of employees	75.1	43.2	1	1
Age	40.0	10.2	32	48
% female	44.7	49.7	0	1
% foreign-born	16.3	36.9	0	1
% dependent children	31.6	46.5	0	1
% of individuals who originate a mortgage	10.6	30.8	0	0
Debt (thousands of Euros)	140.5	120.7	95.8	156.7
% bad loans (new mortgages)	2.6	15.9	0	0
% substandard loans (new mortgages)	1.3	11.3	0	0
% past dues (new mortgages)	1.8	13.3	0	0
<i>Local variables:</i>				
Credit supply	0.9	0.4	0.7	1.2
House price (Euros per sq. m.)	1,683	976	1,019	1,976
Employment rate	45.7	7.3	39.4	51.5
Population density	1.3	1.9	0.2	1.7

Source: Individual variables are drawn from TR and CR; local variables are drawn from Bank of Italy (the credit supply indicator), OMI (house prices) and Istat (employment rate and population density).

Table 2. Individual correlates of mortgage delinquency

Dependent variable:	Delinquency
Female	-0.285*** (0.006)
Age	0.012*** (0.004)
Age squared	0.014*** (0.005)
Dependent children	0.019*** (0.006)
Foreign-born	0.367*** (0.007)
Log of labor income	-0.188*** (0.005)
Log of income from rents	-0.083*** (0.001)
<i>Main source of incomes:</i>	
Pensions	-1.225*** (0.058)
Self-employment	0.104*** (0.008)
Rents	-1.200*** (0.050)
Observations	611,121

The table reports the marginal effects of a cross-section where the dependent variable is the existence of a debt delinquency; the sample includes individuals who originate a debt, independently from when it was originated; robust standard errors in parentheses; *, **, *** mean significantly different from zero at the 10, 5 and 1 percent level, respectively.

Table 3. Credit and supply conditions

Dependent variable:	Log of loans to the households
Credit supply index	0.843*** (0.010)
Year FE	YES
Bank FE	YES
Observations	3,372
R-squared	0.813

The table reports the estimates of a panel where the dependent variable is the log of the loans to the household sector of bank b in the year t (period 2005-2010) and the key explanatory variable is $\pi_{b \times t}$ estimated in equation (6); robust standard errors in parentheses; *, **, *** mean significantly different from zero at the 10, 5 and 1 percent level, respectively.

Table 4. Entry rate before and after the crisis

Specification:	I	II	III
Individual controls	YES	YES	YES
Local controls	-	YES	YES
$CS_{l,t}$	-	-	YES
Entry rate in the period 2005-2007	1,830	1,830	1,830
Entry rate in the period 2008-2010	1,380	1,380	1,380
Difference (a)	0,450	0,450	0,450
Explained by covariates (b)	0,071	0,076	0,118
% explained by covariates (b)/(a)	15.8	16.9	26.2

The table reports the Oaxaca-Blinder decomposition of the difference in the entry rate between the periods before and after the financial crisis; individual controls include age, gender, dependent children, country of birth, log of incomes and occupational dummies, local controls include log of house prices, employment rate, population density and geographical dummies.

Table 5. Determinants of selection into the mortgage market

Dependent variable:	Mortgage origination in year:				
	2005	2006	2007	2008	2009
Log of labor income	0.004*** (0.000)	0.004*** (0.000)	0.004*** (0.000)	0.003*** (0.000)	0.003*** (0.000)
Log of income from rents	-0.002*** (0.000)	-0.001*** (0.000)	-0.001*** (0.000)	-0.001*** (0.000)	-0.000*** (0.000)
Age	0.003*** (0.000)	0.003*** (0.000)	0.002*** (0.000)	0.001*** (0.000)	0.001*** (0.000)
Age squared	-0.004*** (0.000)	-0.004*** (0.000)	-0.004*** (0.000)	-0.002*** (0.000)	-0.001*** (0.000)
Female	0.002*** (0.000)	0.002*** (0.000)	0.002*** (0.000)	0.001*** (0.000)	0.001*** (0.000)
Dependent children	0.008*** (0.000)	0.008*** (0.000)	0.004*** (0.000)	0.002*** (0.000)	0.002*** (0.000)
Foreign-born	-0.001 (0.001)	0.000 (0.001)	-0.002*** (0.001)	-0.004*** (0.000)	-0.007*** (0.000)
Log of house price	0.002*** (0.000)	0.001*** (0.001)	0.001*** (0.000)	0.001* (0.000)	0.002*** (0.000)
Occupational dummies	YES	YES	YES	YES	YES
Geographical dummies	YES	YES	YES	YES	YES
Other local controls	YES	YES	YES	YES	YES
$CS_{l,t}$	0.163*** (0.051)	0.313*** (0.070)	0.268*** (0.058)	0.122** (0.049)	0.168*** (0.055)
Observations	1,013,536	1,013,536	1,013,536	1,013,536	1,013,314
Pseudo R-squared	0.058	0.051	0.042	0.039	0.039

The table reports the marginal effects of the selection equation where the dependent variable is entry in the debt market; standard errors clustered at the LLM level in parentheses; *, **, *** mean significantly different from zero at the 10, 5 and 1 percent level, respectively.

Table 6. Determinants of mortgage delinquency: baseline estimates

	Cohort 2005		Cohort 2006		Cohort 2007		Cohort 2008		Cohort 2009	
	Probit	Heckman probit	Probit	Heckman probit	Probit	Heckman probit	Probit	Heckman probit	Probit	Heckman probit
Income change	-0.015*** (0.002)	-0.020*** (0.003)	-0.020*** (0.002)	-0.026*** (0.003)	-0.022*** (0.002)	-0.030*** (0.003)	-0.015*** (0.002)	-0.021*** (0.003)	-0.011*** (0.002)	-0.018*** (0.003)
House price change	-0.014** (0.006)	-0.019** (0.009)	-0.022** (0.009)	-0.030*** (0.011)	-0.000 (0.009)	0.000 (0.011)	-0.003 (0.009)	-0.005 (0.014)	0.005 (0.008)	0.008 (0.013)
Log of labor income	-0.007*** (0.001)	-0.010*** (0.002)	-0.019*** (0.002)	-0.025*** (0.002)	-0.016*** (0.002)	-0.021*** (0.003)	-0.008*** (0.001)	-0.011*** (0.002)	-0.006*** (0.001)	-0.010*** (0.002)
Log of income from rents	-0.000 (0.001)	-0.000 (0.001)	-0.002*** (0.001)	-0.003*** (0.001)	-0.002*** (0.001)	-0.002*** (0.001)	-0.002*** (0.001)	-0.003*** (0.001)	0.000 (0.000)	0.000 (0.001)
Log of house price	-0.014*** (0.004)	-0.019*** (0.006)	-0.016*** (0.005)	-0.021*** (0.006)	-0.010** (0.005)	-0.014** (0.006)	-0.004 (0.004)	-0.007 (0.006)	-0.007** (0.003)	-0.011** (0.005)
Controls	YES	YES	YES	YES	YES	YES	YES	YES	YES	YES
λ		-0.116 (0.825)		-0.335 (0.545)		-0.783 (0.583)		-1.727*** (0.365)		-1.623** (0.725)
ρ		-0.115		-0.323		-0.655		-0.939		-0.925
Likelihood ratio test (Chi-square)		0.045		0.569		1.502		23.903***		11.914***
Predicted delinquency rate		3.5		4.4		4.3		3.2		2.0
Observations	15,276	1,011,061	16,778	1,010,898	16,703	1,011,758	12,781	1,012,409	12,658	1,011,545

The table reports the marginal effects of a probit and of a Heckman probit model where the dependent variable is, for each cohort of mortgages, the probability of recording a delinquency within two years after mortgage origination. Controls include socio-demographic variables (age, gender, country of birth, dependent children) and local variables (employment rate, population density, geographical dummies); *, **, *** stay for significantly different from zero at the 10, 5 and 1 percent level, respectively.

Table 7. Determinants of mortgage delinquency: balanced equations

	Cohort 2005	Cohort 2006	Cohort 2007	Cohort 2008	Cohort 2009
	Heckman probit	Heckman probit	Heckman probit	Heckman probit	Heckman probit
Income change	-0.020*** (0.003)	-0.026*** (0.003)	-0.030*** (0.003)	-0.021*** (0.003)	-0.018*** (0.003)
House price change	-0.019** (0.009)	-0.030*** (0.011)	-0.000 (0.011)	-0.005 (0.014)	0.008 (0.013)
Log of labor income	-0.010*** (0.002)	-0.025*** (0.002)	-0.021*** (0.003)	-0.011*** (0.002)	-0.010*** (0.002)
Log of income from rents	-0.000 (0.001)	-0.003*** (0.001)	-0.002*** (0.001)	-0.003*** (0.001)	0.000 (0.001)
Log of house price	-0.019*** (0.006)	-0.021*** (0.006)	-0.014** (0.006)	-0.007 (0.006)	-0.012** (0.005)
Controls	YES	YES	YES	YES	YES
λ	-0.214 (0.830)	-0.350 (0.540)	-0.816 (0.550)	-1.763** (0.787)	-1.637** (0.688)
ρ	-0.211	-0.337	-0.673	-0.943	-0.927
Observations	1,011,061	1,010,898	1,011,758	1,012,409	1,011,545

The table reports the marginal effects of a Heckman probit model where the dependent variable is, for each cohort of mortgages, the probability of recording a delinquency within two years after mortgage origination. Controls include socio-demographic variables (age, gender, country of birth, dependent children) and local variables (employment rate, population density, geographical dummies); *, **, *** stay for significantly different from zero at the 10, 5 and 1 percent level, respectively.

Table 8. Determinants of mortgage delinquency: adding controls

	Cohort 2005	Cohort 2006	Cohort 2007	Cohort 2008	Cohort 2009
	Heckman probit	Heckman probit	Heckman probit	Heckman probit	Heckman probit
Income change	-0.015*** (0.002)	-0.019*** (0.002)	-0.020*** (0.002)	-0.018*** (0.003)	-0.018*** (0.003)
House price change	-0.017*** (0.006)	-0.026*** (0.008)	-0.003 (0.008)	-0.007 (0.012)	0.001 (0.012)
Log of labor income	-0.008*** (0.002)	-0.021*** (0.002)	-0.016*** (0.002)	-0.010*** (0.002)	-0.011*** (0.002)
Log of income from rents	-0.001 (0.001)	-0.003*** (0.001)	-0.002*** (0.001)	-0.003*** (0.001)	0.000 (0.001)
Log of house price	-0.018*** (0.004)	-0.020*** (0.005)	-0.016*** (0.004)	-0.008 (0.005)	-0.013** (0.005)
Log of debt	0.022*** (0.003)	0.031*** (0.003)	0.034*** (0.003)	0.018*** (0.004)	0.004 (0.004)
Joint debt	-0.010*** (0.003)	-0.025*** (0.003)	-0.021*** (0.003)	-0.021*** (0.004)	-0.029*** (0.004)
Bank delinquency rate	0.001 (0.001)	0.001 (0.001)	0.007*** (0.001)	0.001 (0.002)	0.002 (0.001)
Bank branch density	0.001 (0.005)	0.000 (0.005)	0.002 (0.005)	-0.007 (0.006)	0.007 (0.006)
Herfindahl index	0.008 (0.047)	-0.016 (0.046)	-0.011 (0.044)	-0.091 (0.060)	0.071** (0.035)
Controls	YES	YES	YES	YES	YES
λ	-0.474 (0.933)	-0.467 (0.667)	-0.620 (0.573)	-1.762*** (0.659)	-1.581*** (0.564)
ρ	-0.441	-0.436	-0.551	-0.943	-0.919
Observations	1,011,058	1,010,898	1,011,755	1,012,407	1,011,536

The table reports the marginal effects of a Heckman probit model where the dependent variable is, for each cohort of mortgages, the probability of recording a delinquency within two years after mortgage origination. Controls include socio-demographic variables (age, gender, country of birth, dependent children) and local variables (employment rate, population density, geographical dummies); *, **, *** stay for significantly different from zero at the 10, 5 and 1 percent level, respectively.

Table 9. Determinants of mortgage delinquency: excluding self-employed individuals

	Cohort 2005 Heckman probit	Cohort 2006 Heckman probit	Cohort 2007 Heckman probit	Cohort 2008 Heckman probit	Cohort 2009 Heckman probit
Income change	-0.013*** (0.002)	-0.016*** (0.002)	-0.018*** (0.002)	-0.016*** (0.003)	-0.012*** (0.003)
House price change	-0.017** (0.007)	-0.022*** (0.009)	-0.002 (0.008)	-0.008 (0.012)	0.009 (0.012)
Log of labor income	-0.008*** (0.002)	-0.019*** (0.002)	-0.016*** (0.002)	-0.009*** (0.002)	-0.009*** (0.002)
Log of income from rents	-0.000 (0.001)	-0.003*** (0.001)	-0.002** (0.001)	-0.004*** (0.001)	0.000 (0.001)
Log of house price	-0.017*** (0.005)	-0.023*** (0.005)	-0.014*** (0.005)	-0.010* (0.006)	-0.013** (0.005)
Controls	YES	YES	YES	YES	YES
λ	-0.733 (0.730)	-0.206 (0.809)	-0.673 (0.563)	-1.589*** (0.537)	-1.595** (0.767)
ρ	-0.625	-0.203	-0.587	-0.920	-0.921
Observations	891,012	887,008	885,788	897,251	900,696

The table reports the marginal effects of a Heckman probit model where the dependent variable is, for each cohort of mortgages, the probability of recording a delinquency within two years after mortgage origination. Controls include socio-demographic variables (age, gender, country of birth, dependent children) local variables (employment rate, population density, geographical dummies) and additional controls introduced in the previous robustness checks (log of debt, joint debt, bank delinquency rate, local branch density, herfindahl index); *, **, *** stay for significantly different from zero at the 10, 5 and 1 percent level, respectively.

Table 10. Determinants of mortgage delinquency: ordered probit

	Cohort 2005	Cohort 2006	Cohort 2007	Cohort 2008	Cohort 2009
Income change	-0.194*** (0.058)	-0.211*** (0.029)	-0.194*** (0.057)	-0.097*** (0.035)	-0.103** (0.043)
House price change	-0.181** (0.088)	-0.244*** (0.091)	0.020 (0.074)	-0.014 (0.061)	0.064 (0.077)
Log of labor income	-0.125* (0.066)	-0.213*** (0.030)	-0.203*** (0.016)	-0.142*** (0.017)	-0.149*** (0.020)
Log of income from rents	0.008 (0.047)	-0.018 (0.023)	0.001 (0.016)	0.008 (0.008)	0.013*** (0.004)
Log of house price	-0.195*** (0.055)	-0.169*** (0.050)	-0.110*** (0.042)	-0.051 (0.031)	-0.117*** (0.038)
Controls	YES	YES	YES	YES	YES
1° threshold	-2.536 (5.381)	-2.494 (2.526)	-4.085*** (1.464)	-4.261*** (0.486)	-3.598*** (0.577)
2° threshold	-2.167 (5.481)	-2.119 (2.562)	-3.860** (1.524)	-4.139*** (0.517)	-3.493*** (0.611)
3° threshold	-1.937 (5.543)	-1.766 (2.596)	-3.528** (1.612)	-3.992*** (0.557)	-3.384*** (0.647)
λ	-0.287 (1.075)	-0.211 (0.521)	-0.697 (0.505)	-1.467*** (0.425)	-1.547*** (0.487)
Observations	1,011,061	1,010,898	1,011,758	1,012,409	1,011,545

The table reports the coefficients of an ordered probit with selection correction where the dependent variable is, for each cohort of mortgages, a discrete variable capturing financial health (0 = performing loan, 1 = past due, 2 = substandard loan, 3 = bad loan) within two years after mortgage origination. Controls include socio-demographic variables (age, gender, country of birth, dependent children) and local variables (employment rate, population density, geographical dummies); *, **, *** stay for significantly different from zero at the 10, 5 and 1 percent level, respectively.

RECENTLY PUBLISHED “TEMI” (*)

- N. 975 – *Hedonic value of Italian tourism supply: comparing environmental and cultural attractiveness*, by Valter Di Giacinto and Giacinto Micucci (September 2014).
- N. 976 – *Multidimensional poverty and inequality*, by Rolf Aaberge and Andrea Brandolini (September 2014).
- N. 977 – *Financial indicators and density forecasts for US output and inflation*, by Piergiorgio Alessandri and Haroon Mumtaz (October 2014).
- N. 978 – *Does issuing equities help R&D activity? Evidence from unlisted Italian high-tech manufacturing firms*, by Silvia Magri (October 2014).
- N. 979 – *Quantile aggregation of density forecasts*, by Fabio Busetti (October 2014).
- N. 980 – *Sharing information on lending decisions: an empirical assessment*, by Ugo Albertazzi, Margherita Bottero and Gabriele Sene (October 2014).
- N. 981 – *The academic and labor market returns of university professors*, by Michela Braga, Marco Paccagnella and Michele Pellizzari (October 2014).
- N. 982 – *Informational effects of monetary policy*, by Giuseppe Ferrero, Marcello Miccoli and Sergio Santoro (October 2014).
- N. 983 – *Science and Technology Parks in Italy: main features and analysis of their effects on the firms hosted*, by Danilo Liberati, Marco Marinucci and Giulia Martina Tanzi (October 2014).
- N. 984 – *Natural expectations and home equity extraction*, by Roberto Pancrazi and Mario Pietruni (October 2014).
- N. 985 – *Dif-in-dif estimators of multiplicative treatment effects*, by Emanuele Ciani and Paul Fisher (October 2014).
- N. 986 – *An estimated DSGE model with search and matching frictions in the credit market*, by Danilo Liberati (October 2014).
- N. 987 – *Large banks, loan rate markup and monetary policy*, by Vincenzo Cuciniello and Federico M. Signoretti (October 2014).
- N. 988 – *The interest-rate sensitivity of the demand for sovereign debt. Evidence from OECD countries (1995-2011)*, by Giuseppe Grande, Sergio Masciantonio and Andrea Tiseno (October 2014).
- N. 989 – *The determinants of household debt: a cross-country analysis*, by Massimo Coletta, Riccardo De Bonis and Stefano Piermattei (October 2014).
- N. 990 – *How much of bank credit risk is sovereign risk? Evidence from the Eurozone*, by Junye Li and Gabriele Zinna (October 2014).
- N. 991 – *The scapegoat theory of exchange rates: the first tests*, by Marcel Fratzscher, Dagfinn Rime, Lucio Sarno and Gabriele Zinna (October 2014).
- N. 992 – *Informed trading and stock market efficiency*, by Taneli Mäkinen (October 2014).
- N. 993 – *Optimal monetary policy rules and house prices: the role of financial frictions*, by Alessandro Notarpietro and Stefano Siviero (October 2014).
- N. 994 – *Trade liberalizations and domestic suppliers: evidence from Chile*, by Andrea Linarello (November 2014).
- N. 995 – *Dynasties in professions: the role of rents*, by Sauro Mocetti (November 2014).
- N. 996 – *Current account “core-periphery dualism” in the EMU*, by Tatiana Cesaroni and Roberta De Santis (November 2014).
- N. 997 – *Macroeconomic effects of simultaneous implementation of reforms after the crisis*, by Andrea Gerali, Alessandro Notarpietro and Massimiliano Pisani (November 2014).

(*) Requests for copies should be sent to:
 Banca d’Italia – Servizio Struttura economica e finanziaria – Divisione Biblioteca e Archivio storico –
 Via Nazionale, 91 – 00184 Rome – (fax 0039 06 47922059). They are available on the Internet www.bancaditalia.it.

2011

- S. DI ADDARIO, *Job search in thick markets*, Journal of Urban Economics, v. 69, 3, pp. 303-318, **TD No. 605 (December 2006)**.
- F. SCHIVARDI and E. VIVIANO, *Entry barriers in retail trade*, Economic Journal, v. 121, 551, pp. 145-170, **TD No. 616 (February 2007)**.
- G. FERRERO, A. NOBILI and P. PASSIGLIA, *Assessing excess liquidity in the Euro Area: the role of sectoral distribution of money*, Applied Economics, v. 43, 23, pp. 3213-3230, **TD No. 627 (April 2007)**.
- P. E. MISTRULLI, *Assessing financial contagion in the interbank market: maximum entropy versus observed interbank lending patterns*, Journal of Banking & Finance, v. 35, 5, pp. 1114-1127, **TD No. 641 (September 2007)**.
- E. CIAPANNA, *Directed matching with endogenous markov probability: clients or competitors?*, The RAND Journal of Economics, v. 42, 1, pp. 92-120, **TD No. 665 (April 2008)**.
- M. BUGAMELLI and F. PATERNO, *Output growth volatility and remittances*, Economica, v. 78, 311, pp. 480-500, **TD No. 673 (June 2008)**.
- V. DI GIACINTO e M. PAGNINI, *Local and global agglomeration patterns: two econometrics-based indicators*, Regional Science and Urban Economics, v. 41, 3, pp. 266-280, **TD No. 674 (June 2008)**.
- G. BARONE and F. CINGANO, *Service regulation and growth: evidence from OECD countries*, Economic Journal, v. 121, 555, pp. 931-957, **TD No. 675 (June 2008)**.
- P. SESTITO and E. VIVIANO, *Reservation wages: explaining some puzzling regional patterns*, Labour, v. 25, 1, pp. 63-88, **TD No. 696 (December 2008)**.
- R. GIORDANO and P. TOMMASINO, *What determines debt intolerance? The role of political and monetary institutions*, European Journal of Political Economy, v. 27, 3, pp. 471-484, **TD No. 700 (January 2009)**.
- P. ANGELINI, A. NOBILI and C. PICILLO, *The interbank market after August 2007: What has changed, and why?*, Journal of Money, Credit and Banking, v. 43, 5, pp. 923-958, **TD No. 731 (October 2009)**.
- G. BARONE and S. MOCETTI, *Tax morale and public spending inefficiency*, International Tax and Public Finance, v. 18, 6, pp. 724-49, **TD No. 732 (November 2009)**.
- L. FORNI, A. GERALI and M. PISANI, *The Macroeconomics of Fiscal Consolidation in a Monetary Union: the Case of Italy*, in Luigi Paganetto (ed.), Recovery after the crisis. Perspectives and policies, VDM Verlag Dr. Muller, **TD No. 747 (March 2010)**.
- A. DI CESARE and G. GUAZZAROTTI, *An analysis of the determinants of credit default swap changes before and during the subprime financial turmoil*, in Barbara L. Campos and Janet P. Wilkins (eds.), The Financial Crisis: Issues in Business, Finance and Global Economics, New York, Nova Science Publishers, Inc., **TD No. 749 (March 2010)**.
- A. LEVY and A. ZAGHINI, *The pricing of government guaranteed bank bonds*, Banks and Bank Systems, v. 6, 3, pp. 16-24, **TD No. 753 (March 2010)**.
- G. BARONE, R. FELICI and M. PAGNINI, *Switching costs in local credit markets*, International Journal of Industrial Organization, v. 29, 6, pp. 694-704, **TD No. 760 (June 2010)**.
- G. BARBIERI, C. ROSSETTI e P. SESTITO, *The determinants of teacher mobility: evidence using Italian teachers' transfer applications*, Economics of Education Review, v. 30, 6, pp. 1430-1444, **TD No. 761 (marzo 2010)**.
- G. GRANDE and I. VISCO, *A public guarantee of a minimum return to defined contribution pension scheme members*, The Journal of Risk, v. 13, 3, pp. 3-43, **TD No. 762 (June 2010)**.
- P. DEL GIOVANE, G. ERAMO and A. NOBILI, *Disentangling demand and supply in credit developments: a survey-based analysis for Italy*, Journal of Banking and Finance, v. 35, 10, pp. 2719-2732, **TD No. 764 (June 2010)**.
- G. BARONE and S. MOCETTI, *With a little help from abroad: the effect of low-skilled immigration on the female labour supply*, Labour Economics, v. 18, 5, pp. 664-675, **TD No. 766 (July 2010)**.
- S. FEDERICO and A. FELETTIGH, *Measuring the price elasticity of import demand in the destination markets of Italian exports*, Economia e Politica Industriale, v. 38, 1, pp. 127-162, **TD No. 776 (October 2010)**.
- S. MAGRI and R. PICO, *The rise of risk-based pricing of mortgage interest rates in Italy*, Journal of Banking and Finance, v. 35, 5, pp. 1277-1290, **TD No. 778 (October 2010)**.

- M. TABOGA, *Under/over-valuation of the stock market and cyclically adjusted earnings*, International Finance, v. 14, 1, pp. 135-164, **TD No. 780 (December 2010)**.
- S. NERI, *Housing, consumption and monetary policy: how different are the U.S. and the Euro area?*, Journal of Banking and Finance, v.35, 11, pp. 3019-3041, **TD No. 807 (April 2011)**.
- V. CUCINIELLO, *The welfare effect of foreign monetary conservatism with non-atomistic wage setters*, Journal of Money, Credit and Banking, v. 43, 8, pp. 1719-1734, **TD No. 810 (June 2011)**.
- A. CALZA and A. ZAGHINI, *welfare costs of inflation and the circulation of US currency abroad*, The B.E. Journal of Macroeconomics, v. 11, 1, Art. 12, **TD No. 812 (June 2011)**.
- I. FAIELLA, *La spesa energetica delle famiglie italiane*, Energia, v. 32, 4, pp. 40-46, **TD No. 822 (September 2011)**.
- D. DEPALO and R. GIORDANO, *The public-private pay gap: a robust quantile approach*, Giornale degli Economisti e Annali di Economia, v. 70, 1, pp. 25-64, **TD No. 824 (September 2011)**.
- R. DE BONIS and A. SILVESTRINI, *The effects of financial and real wealth on consumption: new evidence from OECD countries*, Applied Financial Economics, v. 21, 5, pp. 409-425, **TD No. 837 (November 2011)**.
- F. CAPRIOLI, P. RIZZA and P. TOMMASINO, *Optimal fiscal policy when agents fear government default*, Revue Economique, v. 62, 6, pp. 1031-1043, **TD No. 859 (March 2012)**.

2012

- F. CINGANO and A. ROSOLIA, *People I know: job search and social networks*, Journal of Labor Economics, v. 30, 2, pp. 291-332, **TD No. 600 (September 2006)**.
- G. GOBBI and R. ZIZZA, *Does the underground economy hold back financial deepening? Evidence from the italian credit market*, Economia Marche, Review of Regional Studies, v. 31, 1, pp. 1-29, **TD No. 646 (November 2006)**.
- S. MOCETTI, *Educational choices and the selection process before and after compulsory school*, Education Economics, v. 20, 2, pp. 189-209, **TD No. 691 (September 2008)**.
- P. PINOTTI, M. BIANCHI and P. BUONANNO, *Do immigrants cause crime?*, Journal of the European Economic Association, v. 10, 6, pp. 1318-1347, **TD No. 698 (December 2008)**.
- M. PERICOLI and M. TABOGA, *Bond risk premia, macroeconomic fundamentals and the exchange rate*, International Review of Economics and Finance, v. 22, 1, pp. 42-65, **TD No. 699 (January 2009)**.
- F. LIPPI and A. NOBILI, *Oil and the macroeconomy: a quantitative structural analysis*, Journal of European Economic Association, v. 10, 5, pp. 1059-1083, **TD No. 704 (March 2009)**.
- G. ASCARI and T. ROPELE, *Disinflation in a DSGE perspective: sacrifice ratio or welfare gain ratio?*, Journal of Economic Dynamics and Control, v. 36, 2, pp. 169-182, **TD No. 736 (January 2010)**.
- S. FEDERICO, *Headquarter intensity and the choice between outsourcing versus integration at home or abroad*, Industrial and Corporate Change, v. 21, 6, pp. 1337-1358, **TD No. 742 (February 2010)**.
- I. BUONO and G. LALANNE, *The effect of the Uruguay Round on the intensive and extensive margins of trade*, Journal of International Economics, v. 86, 2, pp. 269-283, **TD No. 743 (February 2010)**.
- A. BRANDOLINI, S. MAGRI and T. M. SMEEDING, *Asset-based measurement of poverty*, In D. J. Besharov and K. A. Couch (eds), Counting the Poor: New Thinking About European Poverty Measures and Lessons for the United States, Oxford and New York: Oxford University Press, **TD No. 755 (March 2010)**.
- S. GOMES, P. JACQUINOT and M. PISANI, *The EAGLE. A model for policy analysis of macroeconomic interdependence in the euro area*, Economic Modelling, v. 29, 5, pp. 1686-1714, **TD No. 770 (July 2010)**.
- A. ACCETTURO and G. DE BLASIO, *Policies for local development: an evaluation of Italy's "Patti Territoriali"*, Regional Science and Urban Economics, v. 42, 1-2, pp. 15-26, **TD No. 789 (January 2006)**.
- E. COCOZZA and P. PISELLI, *Testing for east-west contagion in the European banking sector during the financial crisis*, in R. Matoušek; D. Stavárek (eds.), Financial Integration in the European Union, Taylor & Francis, **TD No. 790 (February 2011)**.
- F. BUSETTI and S. DI SANZO, *Bootstrap LR tests of stationarity, common trends and cointegration*, Journal of Statistical Computation and Simulation, v. 82, 9, pp. 1343-1355, **TD No. 799 (March 2006)**.
- S. NERI and T. ROPELE, *Imperfect information, real-time data and monetary policy in the Euro area*, The Economic Journal, v. 122, 561, pp. 651-674, **TD No. 802 (March 2011)**.

- A. ANZUINI and F. FORNARI, *Macroeconomic determinants of carry trade activity*, Review of International Economics, v. 20, 3, pp. 468-488, **TD No. 817 (September 2011)**.
- M. AFFINITO, *Do interbank customer relationships exist? And how did they function in the crisis? Learning from Italy*, Journal of Banking and Finance, v. 36, 12, pp. 3163-3184, **TD No. 826 (October 2011)**.
- P. GUERRIERI and F. VERGARA CAFFARELLI, *Trade Openness and International Fragmentation of Production in the European Union: The New Divide?*, Review of International Economics, v. 20, 3, pp. 535-551, **TD No. 855 (February 2012)**.
- V. DI GIACINTO, G. MICUCCI and P. MONTANARO, *Network effects of public transport infrastructure: evidence on Italian regions*, Papers in Regional Science, v. 91, 3, pp. 515-541, **TD No. 869 (July 2012)**.
- A. FILIPPIN and M. PACCAGNELLA, *Family background, self-confidence and economic outcomes*, Economics of Education Review, v. 31, 5, pp. 824-834, **TD No. 875 (July 2012)**.

2013

- A. MERCATANTI, *A likelihood-based analysis for relaxing the exclusion restriction in randomized experiments with imperfect compliance*, Australian and New Zealand Journal of Statistics, v. 55, 2, pp. 129-153, **TD No. 683 (August 2008)**.
- F. CINGANO and P. PINOTTI, *Politicians at work. The private returns and social costs of political connections*, Journal of the European Economic Association, v. 11, 2, pp. 433-465, **TD No. 709 (May 2009)**.
- F. Busetti and J. MARCUCCI, *Comparing forecast accuracy: a Monte Carlo investigation*, International Journal of Forecasting, v. 29, 1, pp. 13-27, **TD No. 723 (September 2009)**.
- D. DOTTORI, S. I-LING and F. ESTEVAN, *Reshaping the schooling system: The role of immigration*, Journal of Economic Theory, v. 148, 5, pp. 2124-2149, **TD No. 726 (October 2009)**.
- A. FINICELLI, P. PAGANO and M. SBRACIA, *Ricardian Selection*, Journal of International Economics, v. 89, 1, pp. 96-109, **TD No. 728 (October 2009)**.
- L. MONTEFORTE and G. MORETTI, *Real-time forecasts of inflation: the role of financial variables*, Journal of Forecasting, v. 32, 1, pp. 51-61, **TD No. 767 (July 2010)**.
- R. GIORDANO and P. TOMMASINO, *Public-sector efficiency and political culture*, FinanzArchiv, v. 69, 3, pp. 289-316, **TD No. 786 (January 2011)**.
- E. GAIOTTI, *Credit availability and investment: lessons from the "Great Recession"*, European Economic Review, v. 59, pp. 212-227, **TD No. 793 (February 2011)**.
- F. NUCCI and M. RIGGI, *Performance pay and changes in U.S. labor market dynamics*, Journal of Economic Dynamics and Control, v. 37, 12, pp. 2796-2813, **TD No. 800 (March 2011)**.
- G. CAPPELLETTI, G. GUAZZAROTTI and P. TOMMASINO, *What determines annuity demand at retirement?*, The Geneva Papers on Risk and Insurance – Issues and Practice, pp. 1-26, **TD No. 805 (April 2011)**.
- A. ACCETTURO e L. INFANTE, *Skills or Culture? An analysis of the decision to work by immigrant women in Italy*, IZA Journal of Migration, v. 2, 2, pp. 1-21, **TD No. 815 (July 2011)**.
- A. DE SOCIO, *Squeezing liquidity in a "lemons market" or asking liquidity "on tap"*, Journal of Banking and Finance, v. 27, 5, pp. 1340-1358, **TD No. 819 (September 2011)**.
- S. GOMES, P. JACQUINOT, M. MOHR and M. PISANI, *Structural reforms and macroeconomic performance in the euro area countries: a model-based assessment*, International Finance, v. 16, 1, pp. 23-44, **TD No. 830 (October 2011)**.
- G. BARONE and G. DE BLASIO, *Electoral rules and voter turnout*, International Review of Law and Economics, v. 36, 1, pp. 25-35, **TD No. 833 (November 2011)**.
- O. BLANCHARD and M. RIGGI, *Why are the 2000s so different from the 1970s? A structural interpretation of changes in the macroeconomic effects of oil prices*, Journal of the European Economic Association, v. 11, 5, pp. 1032-1052, **TD No. 835 (November 2011)**.
- R. CRISTADORO and D. MARCONI, *Household savings in China*, in G. Gomel, D. Marconi, I. Musu, B. Quintieri (eds), The Chinese Economy: Recent Trends and Policy Issues, Springer-Verlag, Berlin, **TD No. 838 (November 2011)**.
- A. ANZUINI, M. J. LOMBARDI and P. PAGANO, *The impact of monetary policy shocks on commodity prices*, International Journal of Central Banking, v. 9, 3, pp. 119-144, **TD No. 851 (February 2012)**.
- R. GAMBACORTA and M. IANNARIO, *Measuring job satisfaction with CUB models*, Labour, v. 27, 2, pp. 198-224, **TD No. 852 (February 2012)**.

- G. ASCARI and T. ROPELE, *Disinflation effects in a medium-scale new keynesian model: money supply rule versus interest rate rule*, *European Economic Review*, v. 61, pp. 77-100, **TD No. 867 (April 2012)**.
- E. BERETTA and S. DEL PRETE, *Banking consolidation and bank-firm credit relationships: the role of geographical features and relationship characteristics*, *Review of Economics and Institutions*, v. 4, 3, pp. 1-46, **TD No. 901 (February 2013)**.
- M. ANDINI, G. DE BLASIO, G. DURANTON and W. STRANGE, *Marshallian labor market pooling: evidence from Italy*, *Regional Science and Urban Economics*, v. 43, 6, pp.1008-1022, **TD No. 922 (July 2013)**.
- G. SBRANA and A. SILVESTRINI, *Forecasting aggregate demand: analytical comparison of top-down and bottom-up approaches in a multivariate exponential smoothing framework*, *International Journal of Production Economics*, v. 146, 1, pp. 185-98, **TD No. 929 (September 2013)**.
- A. FILIPPIN, C. V. FIORIO and E. VIVIANO, *The effect of tax enforcement on tax morale*, *European Journal of Political Economy*, v. 32, pp. 320-331, **TD No. 937 (October 2013)**.

2014

- M. TABOGA, *The riskiness of corporate bonds*, *Journal of Money, Credit and Banking*, v.46, 4, pp. 693-713, **TD No. 730 (October 2009)**.
- G. MICUCCI and P. ROSSI, *Il ruolo delle tecnologie di prestito nella ristrutturazione dei debiti delle imprese in crisi*, in A. Zazzaro (a cura di), *Le banche e il credito alle imprese durante la crisi*, Bologna, Il Mulino, **TD No. 763 (June 2010)**.
- R. BRONZINI and E. IACHINI, *Are incentives for R&D effective? Evidence from a regression discontinuity approach*, *American Economic Journal : Economic Policy*, v. 6, 4, pp. 100-134, **TD No. 791 (February 2011)**.
- P. ANGELINI, S. NERI and F. PANETTA, *The interaction between capital requirements and monetary policy*, *Journal of Money, Credit and Banking*, v. 46, 6, pp. 1073-1112, **TD No. 801 (March 2011)**.
- M. BRAGA, M. PACCAGNELLA and M. PELLIZZARI, *Evaluating students' evaluations of professors*, *Economics of Education Review*, v. 41, pp. 71-88, **TD No. 825 (October 2011)**.
- M. FRANCESE and R. MARZIA, *Is there Room for containing healthcare costs? An analysis of regional spending differentials in Italy*, *The European Journal of Health Economics*, v. 15, 2, pp. 117-132, **TD No. 828 (October 2011)**.
- L. GAMBACORTA and P. E. MISTRULLI, *Bank heterogeneity and interest rate setting: what lessons have we learned since Lehman Brothers?*, *Journal of Money, Credit and Banking*, v. 46, 4, pp. 753-778, **TD No. 829 (October 2011)**.
- M. PERICOLI, *Real term structure and inflation compensation in the euro area*, *International Journal of Central Banking*, v. 10, 1, pp. 1-42, **TD No. 841 (January 2012)**.
- E. GENNARI and G. MESSINA, *How sticky are local expenditures in Italy? Assessing the relevance of the flypaper effect through municipal data*, *International Tax and Public Finance*, v. 21, 2, pp. 324-344, **TD No. 844 (January 2012)**.
- V. DI GACINTO, M. GOMELLINI, G. MICUCCI and M. PAGNINI, *Mapping local productivity advantages in Italy: industrial districts, cities or both?*, *Journal of Economic Geography*, v. 14, pp. 365-394, **TD No. 850 (January 2012)**.
- A. ACCETTURO, F. MANARESI, S. MOCETTI and E. OLIVIERI, *Don't Stand so close to me: the urban impact of immigration*, *Regional Science and Urban Economics*, v. 45, pp. 45-56, **TD No. 866 (April 2012)**.
- S. FEDERICO, *Industry dynamics and competition from low-wage countries: evidence on Italy*, *Oxford Bulletin of Economics and Statistics*, v. 76, 3, pp. 389-410, **TD No. 879 (September 2012)**.
- F. D'AMURI and G. PERI, *Immigration, jobs and employment protection: evidence from Europe before and during the Great Recession*, *Journal of the European Economic Association*, v. 12, 2, pp. 432-464, **TD No. 886 (October 2012)**.
- M. TABOGA, *What is a prime bank? A euribor-OIS spread perspective*, *International Finance*, v. 17, 1, pp. 51-75, **TD No. 895 (January 2013)**.
- L. GAMBACORTA and F. M. SIGNORETTI, *Should monetary policy lean against the wind? An analysis based on a DSGE model with banking*, *Journal of Economic Dynamics and Control*, v. 43, pp. 146-74, **TD No. 921 (July 2013)**.

- M. BARIGOZZI, CONTI A.M. and M. LUCIANI, *Do euro area countries respond asymmetrically to the common monetary policy?*, Oxford Bulletin of Economics and Statistics, v. 76, 5, pp. 693-714, **TD No. 923 (July 2013)**.
- U. ALBERTAZZI and M. BOTTERO, *Foreign bank lending: evidence from the global financial crisis*, Journal of International Economics, v. 92, 1, pp. 22-35, **TD No. 926 (July 2013)**.
- R. DE BONIS and A. SILVESTRINI, *The Italian financial cycle: 1861-2011*, Cliometrica, v.8, 3, pp. 301-334, **TD No. 936 (October 2013)**.
- D. PIANESELLI and A. ZAGHINI, *The cost of firms' debt financing and the global financial crisis*, Finance Research Letters, v. 11, 2, pp. 74-83, **TD No. 950 (February 2014)**.
- A. ZAGHINI, *Bank bonds: size, systemic relevance and the sovereign*, International Finance, v. 17, 2, pp. 161-183, **TD No. 966 (July 2014)**.
- M. SILVIA, *Does issuing equity help R&D activity? Evidence from unlisted Italian high-tech manufacturing firms*, Economics of Innovation and New Technology, v. 23, 8, pp. 825-854, **TD No. 978 (October 2014)**.

FORTHCOMING

- M. BUGAMELLI, S. FABIANI and E. SETTE, *The age of the dragon: the effect of imports from China on firm-level prices*, Journal of Money, Credit and Banking, **TD No. 737 (January 2010)**.
- F. D'AMURI, *Gli effetti della legge 133/2008 sulle assenze per malattia nel settore pubblico*, Rivista di Politica Economica, **TD No. 787 (January 2011)**.
- G. DE BLASIO, D. FANTINO and G. PELLEGRINI, *Evaluating the impact of innovation incentives: evidence from an unexpected shortage of funds*, Industrial and Corporate Change, **TD No. 792 (February 2011)**.
- A. DI CESARE, A. P. STORK and C. DE VRIES, *Risk measures for autocorrelated hedge fund returns*, Journal of Financial Econometrics, **TD No. 831 (October 2011)**.
- D. FANTINO, A. MORI and D. SCALISE, *Collaboration between firms and universities in Italy: the role of a firm's proximity to top-rated departments*, Rivista Italiana degli economisti, **TD No. 884 (October 2012)**.
- G. BARONE and S. MOCETTI, *Natural disasters, growth and institutions: a tale of two earthquakes*, Journal of Urban Economics, **TD No. 949 (January 2014)**.