



BANCA D'ITALIA
EUROSISTEMA

Supplements to the Statistical Bulletin

Monetary and Financial Indicators

Money and Banking

New Series

Volume XXI - 6 October 2011

Number

48

NOTICE TO READERS

The supplement is divided into three sections:

1. Monetary policy statistics;
2. Banking system balance sheet items and other information;
3. Banking interest rates.

The Methodological appendix describes the content of the supplement.

The complete time series are available on the Bank of Italy's website under Statistics/Statistical database (BIP on-line). In this database are also available additional tables, listed in the index of the Supplement.

An extract of the information contained in this publication will be released monthly, a few days beforehand, on the Bank of Italy's website under Statistics/Special Data Dissemination Standard (SDDS).

As of issue published on 11 July 2011, new time series are published on securitized loans originated by banks operating in Italy (tables 2.14 and 2.15), deposits of other residents by sector of economic activity (table 2.3), and new harmonized statistics on banking interest rates according to the Eurosystem standards. Moreover, the one-month percentage changes on an annual basis of deposits (tab. 2.7) are computed excluding deposits related to operations of loan sales.

As of issue published on 8 February 2011, new time series are published on the twelve-month rates of change of bank loans by sector and total bank deposits (Figures 2.1 and 2.2). All rates of change are adjusted to take account of changes in exchange rates, revaluations, and statistical reclassifications. The time series on the rate of change of bank loans are calculated including loans not stated in banks' balance sheets because securitized or otherwise sold, and excluding transactions concluded with central counterparties. The time series on the rate of change of total deposits is calculated excluding deposits related to securitizations and loan sales, and transactions concluded with central counterparties.

As of issue published on 6 August 2010, new statistics on loans and bad debts by branch of economic activity are published following the statistical classification ATECO 2007, the Italian version of the European statistical classification NACE Rev. 2.

The entry into force of the new Regulation ECB/2008/32 as of June 2010 and some changes to the supervisory reports have produced some breaks in the time series on loans, deposits, securities other than shares and capital and reserves. Series on total assets and total liabilities also show a statistical break in June 2010 as a consequence of these discontinuities. Interest rates have also been affected by some discontinuities due to the entry into force of Regulation ECB/2009/7. In November 2010, the time series of outstanding amounts of deposits, interbank loans with counterparties in Italy, and the time series "capital and reserves" and "shares and other equity issued by MFIs resident in Italy" show some discontinuities due to the effects of the reorganization of major banking groups; such operations almost entirely explain the changes compared to previous months.

C O N T E N T S

Section 1 Single monetary policy statistics: the Italian components

Figure 1.1--Italian contributions of euro-area monetary aggregates (percentage changes)

Table 1.1a	- (TAM10100)	- Consolidated balance sheet of MFIs resident in Italy: assets
Table 1.1b	- (TAM10110)	- Consolidated balance sheet of MFIs resident in Italy: liabilities
Table 1.2a	- (TAM10200)	- Italian components of monetary aggregates of the euro area: residents of the euro area (stocks)
Table 1.2b	- (TAM10210)	- Italian components of monetary aggregates of the euro area: residents of the euro area (flows)
Table 1.3a	- (TAM10300)	- Counterparts of money: residents of the euro area (stocks)
Table 1.3b	- (TAM10310)	- Counterparts of money: residents of the euro area (flows)
Table 1.4a	- (TAM10400)	- Balance sheet of the Bank of Italy: assets
Table 1.4b	- (TAM10410)	- Balance sheet of the Bank of Italy: liabilities
Table 1.5	- (TAM10500)	- Official Eurosystem interest rates
Table 1.6	- (TAM10600)	- Eurosystem monetary policy operations allotted by the Bank of Italy through tenders
Table 1.7a	- (TAM10700)	- Minimum reserve statistics - Reserve base of banks resident in Italy subject to reserve requirements
Table 1.7b	- (TAM10710)	- Minimum reserve statistics - Reserve maintenance by banks resident in Italy
Table 1.8-	(TAM10800)	- Banking system's liquidity position: Italian contribution
Table 1.9a	- (TAM10900)	- Balance sheet of other MFIs resident in Italy: assets
Table 1.9b	- (TAM10910)	- Balance sheet of other MFIs resident in Italy: liabilities

Tables available only on BIP-on-Line

VAM40260 - *Percentage changes of monetary and credit aggregates*

Section 2 Banks: balance sheet and other information

Figure 2.1--Bank loans to Italian residents by sector of economic activity (percentage changes)

Figure 2.2--Funds raised from Italian residents: deposits and debt securities issued (percentage changes)

Table 2.1a	- (TSC20100)	- Balance sheet of banks resident in Italy: assets
Table 2.1b	- (TSC20110)	- Balance sheet of banks resident in Italy: liabilities
Table 2.2	- (TSC20200)	- Funds raised from other general government and other sectors, in euros
Table 2.3	- (TSC20250)	- Deposits of other residents by sector of economic activity
Table 2.4	- (TSC20300)	- Loans by sector of economic activity
Table 2.5	- (TSC20400)	- Loans to residents of Italy, by maturity and type
Table 2.6	- (TSC20500)	- Bad debts by sector of economic activity: residents of Italy
Table 2.7	- (TSC20600)	- One-month percentage changes on an annual basis: fund-raising
Table 2.8	- (TSC20700)	- One-month percentage changes on an annual basis: loans and holding of securities
Table 2.9	- (TSC20810)	- Loans by branch of economic activity: residents of Italy
Table 2.10	- (TSC20910)	- Bad debts by branch of economic activity: residents of Italy
Table 2.11	- (TSC21000)	- Securities other than shares issued by residents of Italy
Table 2.12	- (TSC21110)	- Securities of third parties held in deposit: debt securities at face value by sector of holder
Table 2.13	- (TSC21210)	- Securities of third parties held in deposit at fair value by instrument
Table 2.14	- (TSC21400)	- Securitized loans, originated by banks resident in Italy, by type and borrowing sector: total
Tavola 2.15	- (TSC21500)	- Securitized loans, originated by banks resident in Italy, by type and borrowing sector:

Tables available only on Bip-on-Line

TSC40100 - *Percentage changes of bank loans to Italian residents by sector of economic activity*

TSC40500 - *Percentage changes funds raised from Italian residents: deposits and debt securities issued*

VDU40180 - *Income statement and other structural indicators*

Section 3 Banks: interest rates

Figure 3.1--Bank interest rates on euro loans by sector: new business (percentages)

Figure 3.2--Bank interest rates on euro deposits by instrument: outstanding amounts (percentages)

Table 3.1	-	(TTI30100)	-	Bank interest rates on euro loans to non-financial corporations: new business
Table 3.2	-	(TTI30200)	-	Bank interest rates on euro loans to households: new business
Table 3.3	-	(TTI30300)	-	Bank interest rates on euro loans to households and non-financial corporations: outstanding amounts
Table 3.4	-	(TTI30400)	-	Bank interest rates on euro deposits from households and non-financial corporations: new business
Table 3.5	-	(TTI30500)	-	Bank interest rates on euro deposits from households and non-financial corporations: outstanding amounts
Table 3.6	-	(TTI30600)	-	Other bank interest rates and interbank interest rates

Tables available only on Bip-on-Line

<i>VTI30100</i>	-	<i>Euro-denominated loans to non-financial corporations: new business</i>
<i>VTI30200</i>	-	<i>Euro-denominated loans to households: new business</i>
<i>VTI30400</i>	-	<i>Euro-denominated deposits from households and non-financial corporations: new business</i>

Methological Appendix

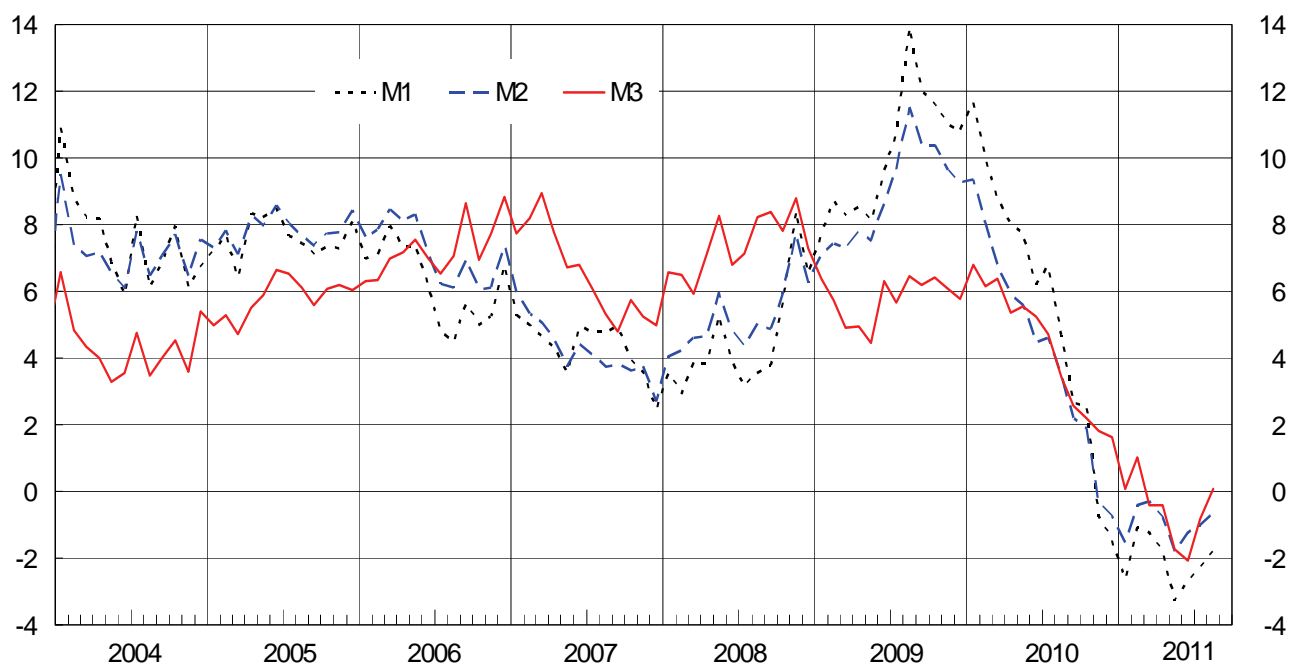
Attachment

Section 1

**Single monetary policy statistics:
the Italian components**

Figure 1.1

ITALIAN CONTRIBUTIONS OF EURO-AREA MONETARY AGGREGATES¹
(12-month percentage changes)



(1) See Methodological appendix.

Table 1.1a
TAM10100

Consolidated balance sheet of MFIs resident in Italy: assets

(stocks in millions of euros)

	Loans to euro-area residents			Holdings of securities other than shares issued by euro-area residents		
	Total	General government	Other euro-area residents	Total	General government	Other euro-area residents
	<i>S675501M</i>	<i>S508121M</i>	<i>S539135M</i>	<i>S855510M</i>	<i>S517303M</i>	<i>S551764M</i>
2008	1,793,981	235,400	1,558,581	349,430	261,367	88,063
2009	1,835,494	248,079	1,587,415	396,607	304,071	92,536
2010 - July.....	1,918,512	253,122	1,665,390	536,726	365,502	171,224
Aug.....	1,923,521	253,722	1,669,799	535,741	365,703	170,038
Sept.....	1,947,899	253,775	1,694,124	540,744	365,375	175,369
Oct.	1,935,219	252,800	1,682,419	539,659	368,483	171,176
Nov.....	1,968,652	255,537	1,713,115	544,703	369,887	174,816
Dec.....	1,976,700	258,562	1,718,138	534,077	366,455	167,622
2011 - Jan.	2,001,405	261,560	1,739,845	535,644	369,536	166,108
Feb.....	2,003,822	261,037	1,742,785	530,650	361,044	169,606
Mar.	2,001,820	261,621	1,740,199	516,285	353,402	162,883
Apr.....	1,994,283	263,969	1,730,314	525,302	356,546	168,756
May	2,004,206	264,746	1,739,460	526,663	364,732	161,931
June	2,013,046	265,073	1,747,973	535,642	372,380	163,262
July.....	2,002,140	262,258	1,739,882	537,737	376,935	160,803
Aug.....	(1,997,714)	(260,391)	(1,737,323)	(558,151)	(394,283)	(163,868)

	Holdings of shares/other equity issued by other euro-area residents	External assets		Fixed assets	Remaining assets	Total
		Loans	Securities and other assets			
	<i>S560093M</i>	<i>S870314M</i>	<i>S882856M</i>	<i>S894130M</i>	<i>S904700M</i>	<i>S922895M</i>
2008	79,081	64,815	53,339	84,761	436,274	2,861,681
2009	87,071	66,061	54,515	85,363	389,742	2,914,852
2010 - July.....	87,961	74,980	57,977	85,569	440,376	3,202,100
Aug.....	87,997	79,577	58,677	85,688	494,205	3,265,406
Sept.....	90,779	78,119	56,736	85,922	463,566	3,263,765
Oct.	90,278	78,677	56,187	85,998	450,437	3,236,455
Nov.....	92,450	77,091	57,832	86,583	452,360	3,279,672
Dec.....	93,637	77,749	56,066	87,376	411,817	3,237,421
2011 - Jan.	93,335	81,983	56,014	87,522	394,906	3,250,808
Feb.....	93,583	80,242	55,566	87,466	397,483	3,248,813
Mar.	94,319	83,623	55,039	87,496	381,538	3,220,120
Apr.....	97,413	83,094	51,719	87,689	383,542	3,223,040
May	100,855	85,216	53,391	87,841	400,051	3,258,224
June	94,188	86,053	52,003	86,556	386,729	3,254,220
July.....	91,760	89,366	52,538	86,587	424,824	3,284,952
Aug.....	(90,239)	(92,919)	(50,692)	(86,452)	(453,553)	(3,329,721)

Consolidated balance sheet of MFIs resident in Italy: liabilities

(stocks in millions of euros)

	Currency in circulation	Deposits of Central government	Deposits of other general government/other euro-area residents			Debt securities issued
			Total	Other general government	Other residents	
	<i>S932288M</i>	<i>S401859M</i>	<i>S831089M</i>	<i>S948823M</i>	<i>S960696M</i>	<i>S977600M</i>
2008	127,913	33,292	1,141,251	30,995	1,110,255	555,999
2009	136,828	47,640	1,209,696	30,025	1,179,671	575,571
2010 - July	141,414	80,120	1,385,152	31,599	1,353,553	556,988
Aug.	140,338	74,387	1,367,399	31,516	1,335,883	559,412
Sept.	140,270	63,760	1,381,622	30,577	1,351,045	563,514
Oct.	141,208	78,844	1,386,301	30,859	1,355,442	567,569
Nov.	140,420	76,292	1,391,105	30,660	1,360,446	570,445
Dec.	143,562	60,077	1,424,359	29,131	1,395,228	565,567
2011 - Jan.	140,942	93,727	1,400,531	32,951	1,367,580	566,549
Feb.	141,160	77,359	1,395,184	31,277	1,363,907	569,888
Mar.	142,005	51,308	1,386,439	31,155	1,355,284	583,626
Apr.	143,020	64,075	1,398,047	30,137	1,367,910	584,026
May	143,749	62,275	1,386,865	29,870	1,356,995	589,970
June	145,455	67,071	1,389,422	30,842	1,358,581	587,029
July	146,947	80,470	1,391,766	30,834	1,360,932	587,485
Aug.	(146,386)	(61,395)	(1,390,335)	(31,466)	(1,358,869)	(583,240)

	Money market funds shares/units	Capital and reserves	External liabilities	Remaining liabilities	Excess of inter-MFI liabilities	Total
	<i>S233288M</i>	<i>S443687M</i>	<i>S477662M</i>	<i>S985209M</i>	<i>S017482M</i>	<i>S922895M</i>
2008	56,669	198,808	199,409	469,308	79,033	2,861,681
2009	53,811	229,997	196,017	416,705	48,587	2,914,852
2010 - July	44,935	307,614	188,845	400,548	96,484	3,202,100
Aug.	44,329	318,022	194,985	451,246	115,287	3,265,406
Sept.	43,041	313,408	195,399	442,235	120,515	3,263,765
Oct.	41,824	314,634	194,470	404,383	107,223	3,236,455
Nov.	39,986	318,545	202,358	440,632	99,888	3,279,672
Dec.	37,512	318,520	195,832	363,007	128,984	3,237,421
2011 - Jan.	36,349	321,765	193,207	375,175	122,562	3,250,808
Feb.	35,461	330,622	202,199	364,897	132,044	3,248,813
Mar.	33,215	328,125	196,909	346,030	152,462	3,220,120
Apr.	32,813	329,450	192,508	328,165	150,936	3,223,040
May	32,496	337,448	201,375	356,554	147,492	3,258,224
June	32,222	341,707	199,197	339,865	152,251	3,254,220
July	31,836	349,421	179,496	343,729	173,802	3,284,952
Aug.	(31,575)	(361,456)	(175,687)	(369,851)	(209,796)	(3,329,721)

Italian components of monetary aggregates of the euro area: residents of the euro area

(end of period amounts in millions of euros)

	Currency held by the public (a)	Overnight deposits (b)	Total (c)=(a+b)	Deposits with agreed maturity up to 2 years (d)	Deposits redeemable at notice up to 3 months (e)	Total (f)=(c+d+e)
	S932288M	S114222M	S026473M	S185934M	S195243M	S294296M
2008	127,913	731,419	859,333	67,494	268,326	1,195,153
2009	136,828	809,839	946,668	68,144	286,861	1,301,673
2010 - July	141,414	804,383	945,798	59,235	288,692	1,293,724
Aug.	140,338	786,696	927,034	61,440	290,645	1,279,119
Sept.	140,270	785,138	925,408	62,225	290,639	1,278,272
Oct.	141,208	797,894	939,102	60,469	290,606	1,290,177
Nov.	140,420	776,498	916,918	61,244	292,159	1,270,322
Dec.	143,562	797,306	940,868	62,775	296,443	1,300,086
2011 - Jan.	140,942	786,761	927,704	60,138	296,389	1,284,231
Feb.	141,160	783,337	924,496	60,854	296,100	1,281,451
Mar.	142,005	783,194	925,200	62,426	295,794	1,283,420
Apr.	143,020	791,623	934,643	61,020	294,814	1,290,477
May	143,749	782,338	926,087	61,204	294,050	1,281,341
June	145,455	784,927	930,382	61,856	294,198	1,286,435
July	146,947	784,819	931,766	61,374	294,044	1,287,184
Aug.	(146,386)	(771,445)	(917,832)	(62,855)	(295,506)	(1,276,193)

	Repurchase agreements (g)	Money market fund shares/units (h)	Debt securities up to 2 years (i)	Total monetary liabilities (l)=(f+g+h+i)	Contribution to euro-area monetary aggregates (excluding currency held by the public)		
					M1	M2	M3
	S222525M	S233288M	S244529M	S314580M	S995653M	S612973M	S633960M
2008	116,701	56,669	52,299	1,420,822	731,419	1,067,240	1,292,909
2009	85,586	53,811	59,226	1,500,296	809,839	1,164,844	1,363,467
2010 - July	127,436	44,935	46,671	1,512,766	804,383	1,152,310	1,371,352
Aug.	124,507	44,329	45,573	1,493,528	786,696	1,138,782	1,353,191
Sept.	133,619	43,041	46,714	1,501,646	785,138	1,138,002	1,361,376
Oct.	129,201	41,824	46,402	1,507,604	797,894	1,148,969	1,366,396
Nov.	151,897	39,986	44,607	1,506,812	776,498	1,129,902	1,366,392
Dec.	158,996	37,512	43,626	1,540,220	797,306	1,156,524	1,396,658
2011 - Jan.	148,015	36,349	44,023	1,512,618	786,761	1,143,288	1,371,675
Feb.	150,304	35,461	42,976	1,510,192	783,337	1,140,290	1,369,031
Mar.	139,379	33,215	44,392	1,500,406	783,194	1,141,414	1,358,400
Apr.	141,093	32,813	46,302	1,510,685	791,623	1,147,456	1,367,664
May	145,294	32,496	44,878	1,504,009	782,338	1,137,592	1,360,260
June	145,438	32,222	45,407	1,509,502	784,927	1,140,981	1,364,048
July	146,180	31,836	47,043	1,512,242	784,819	1,140,237	1,365,295
Aug.	(152,211)	(31,575)	(45,307)	(1,505,286)	(771,445)	(1,129,807)	(1,358,900)

Italian components of monetary aggregates of the euro area: residents of the euro area

(flows in millions of euros)

	Currency held by the public (a)	Overnight deposits (b)	Total (c)=(a+b)	Deposits with agreed maturity up to 2 years (d)	Deposits redeemable at notice over 3 months (e)	Total (f)=(c+d+e)
	S948561M	S284470M	S334157M	S310731M	S320642M	S352424M
2008	14,190	44,750	58,940	8,247	10,057	77,244
2009	8,915	78,772	87,687	1,171	18,539	107,397
2010 - July	2,054	-3,327	-1,273	-598	-24	-1,895
Aug.	-1,076	-18,000	-19,076	2,055	1,952	-15,069
Sept.	-68	-957	-1,025	1,067	-3	39
Oct.	938	12,813	13,751	-1,724	-33	11,994
Nov.	-788	-21,868	-22,656	384	1,551	-20,721
Dec.	3,142	20,967	24,109	1,597	4,285	29,991
2011 - Jan.	-2,620	-10,307	-12,927	-2,557	-53	-15,537
Feb.	217	-3,349	-3,132	738	-289	-2,683
Mar.	846	135	981	1,653	-305	2,329
Apr.	1,015	8,788	9,803	-1,303	-979	7,521
May	727	-9,452	-8,725	124	-710	-9,311
June	1,706	2,721	4,427	411	148	4,986
July	1,492	-346	1,146	-559	-155	433
Aug.	(-561)	(-13,271)	(-13,831)	(1,519)	(1,463)	(-10,850)

	Repurchase agreements (g)	Money market fund shares/units (h)	Debt securities up to 2 years (i)	Total monetary liabilities (l)=(f+g+h+i)	Contribution to euro-area monetary aggregates (excluding currency held by the public)		
					M1	M2	M3
	S345934M	S354990M	S379096M	S365333M	S646203M	S656313M	S666306M
2008	8,713	-8,121	24,343	102,179	44,750	63,056	87,994
2009	-31,115	-2,004	9,030	83,308	78,772	98,486	74,393
2010 - July	-9,081	-1,186	-2,584	-14,746	-3,327	-3,950	-16,801
Aug.	-2,930	-606	-1,050	-19,655	-18,000	-13,993	-18,578
Sept.	9,114	-1,288	723	8,588	-957	106	8,655
Oct.	-8,568	-1,217	-463	1,746	12,813	11,056	809
Nov.	22,695	-1,838	-2,419	-2,283	-21,868	-19,932	-1,495
Dec.	7,099	-2,474	-972	33,644	20,967	26,848	30,501
2011 - Jan.	-10,980	-1,163	292	-27,388	-10,307	-12,916	-24,768
Feb.	2,289	-888	-1,132	-2,414	-3,349	-2,901	-2,631
Mar.	-10,924	-2,246	1,263	-9,578	135	1,484	-10,423
Apr.	1,715	-402	1,836	10,670	8,788	6,507	9,657
May	4,248	-317	-1,331	-6,711	-9,452	-10,040	-7,438
June	144	-274	481	5,337	2,721	3,280	3,631
July	740	-386	1,641	2,428	-346	-1,059	937
Aug.	(6,032)	(-261)	(-1,764)	(-6,844)	(-13,271)	(-10,289)	(-6,283)

Counterparts of money: residents of the euro area

(end of period amounts in millions of euros)

	Total monetary liabilities	Other liabilities of MFIs					
		Deposits of central government	Non-monetary liabilities to the "money-holding sector"				Liabilities to non-residents of the euro area
			Deposits with agreed maturity over 2 years and deposits redeemable at notice over 3 months	Debt securities over 2 years' agreed maturity	Capital and reserves	Total	
	<i>S314580M</i>	<i>S401859M</i>	<i>S685586M</i>	<i>S430860M</i>	<i>S443687M</i>	<i>S452703M</i>	<i>S477662M</i>
2008	1,420,822	33,292	21,529	503,700	198,808	724,037	199,409
2009	1,500,296	47,640	22,909	516,345	229,997	769,251	196,017
2010 - July	1,512,766	80,120	168,182	510,317	307,614	986,113	188,845
Aug.	1,493,528	74,387	166,218	513,839	318,022	998,079	194,985
Sept.	1,501,646	63,760	170,647	516,800	313,408	1,000,855	195,399
Oct.	1,507,604	78,844	168,472	521,167	314,634	1,004,273	194,470
Nov.	1,506,812	76,292	171,505	525,838	318,545	1,015,888	202,358
Dec.	1,540,220	60,077	168,483	521,941	318,520	1,008,944	195,832
2011 - Jan.	1,512,618	93,727	168,371	522,526	321,765	1,012,662	193,207
Feb.	1,510,192	77,359	163,896	526,912	330,622	1,021,430	202,199
Mar.	1,500,406	51,308	160,999	539,234	328,125	1,028,358	196,909
Apr.	1,510,685	64,075	165,644	537,724	329,450	1,032,818	192,508
May	1,504,009	62,275	158,831	545,092	337,448	1,041,371	201,375
June	1,509,502	67,071	162,004	541,622	341,707	1,045,333	199,197
July	1,512,242	80,470	163,447	540,443	349,421	1,053,311	179,496
Aug.	(1,505,286)	(61,395)	(165,626)	(537,933)	(361,456)	(1,065,015)	(175,687)

	Claims on residents of the euro area						Claims on non-residents of the euro area	Other counterparts
	Finance to general government		Finance to other residents			Total		
	Total	<i>of which:</i> bonds	Total	<i>of which:</i> bonds	<i>of which:</i> holding of shares/other equity			
	<i>S528658M</i>	<i>S517303M</i>	<i>S569330M</i>	<i>S551764M</i>	<i>S560093M</i>	<i>S578891M</i>	<i>S590393M</i>	<i>S090607M</i>
2008	496,767	261,367	1,725,725	88,063	79,081	2,222,492	118,154	36,914
2009	552,150	304,071	1,767,022	92,536	87,071	2,319,172	120,576	73,456
2010 - July	618,624	365,502	1,924,575	171,224	87,961	2,543,199	132,956	91,689
Aug.	619,425	365,703	1,927,834	170,038	87,997	2,547,259	138,254	75,466
Sept.	619,150	365,375	1,960,272	175,369	90,779	2,579,422	134,855	47,383
Oct.	621,283	368,483	1,943,873	171,176	90,278	2,565,156	134,864	85,171
Nov.	625,424	369,887	1,980,381	174,816	92,450	2,605,805	134,924	60,621
Dec.	625,017	366,455	1,979,397	167,622	93,637	2,604,414	133,814	66,845
2011 - Jan.	631,096	369,536	1,999,288	166,108	93,335	2,630,384	137,996	43,834
Feb.	622,081	361,044	2,005,974	169,606	93,583	2,628,055	135,809	47,315
Mar.	615,023	353,402	1,997,401	162,883	94,319	2,612,424	138,662	25,895
Apr.	620,515	356,546	1,996,483	168,756	97,413	2,616,998	134,812	48,276
May	629,478	364,732	2,002,246	161,931	100,855	2,631,724	138,608	38,698
June.....	637,453	372,380	2,005,423	163,262	94,188	2,642,876	138,058	40,170
July	639,192	376,935	1,992,445	160,803	91,760	2,631,637	141,904	51,979
Aug.	(654,673)	(394,283)	(1,991,430)	(163,868)	(90,239)	(2,646,104)	(143,612)	(17,668)

Money and Banking

Table 1.3b
TAM10310

Counterparts of money: residents of the euro area

(flows in millions of euros)

	Total monetary liabilities	Other liabilities of MFIs					
		Deposits of central government	Non-monetary liabilities to the "money-holding sector"				Liabilities to non-residents of the euro area
			Deposits with agreed maturity over 2 years and deposits redeemable at notice over 3 months	Debt securities over 2 years' agreed maturity	Capital and reserves	Total	
	S365333M	S614462M	S504484M	S643023M	S655271M	S663170M	S670564M
2008	102,179	9,563	9,244	29,396	-7,458	31,182	-20,308
2009	83,308	14,350	1,376	18,793	7,633	27,802	-1,604
2010 - July	-14,746	17,665	-3,389	881	-474	-2,982	2,033
Aug.	-19,655	-5,733	-1,966	3,414	1,815	3,263	4,803
Sept.	8,588	-10,627	4,433	4,014	-1,917	6,530	4,025
Oct.	1,746	15,084	-2,175	2,294	-9	110	-142
Nov.	-2,283	-2,552	3,232	2,708	185	6,125	4,890
Dec.	33,644	-16,213	-3,023	-3,999	303	-6,719	-5,362
2011 - Jan.	-27,388	33,650	-111	-30	-2,225	-2,366	-1,578
Feb.	-2,414	-16,368	-4,475	1,273	5,298	2,096	9,351
Mar.	-9,578	-26,051	-2,896	13,600	-1,343	9,361	-4,173
Apr.	10,670	12,767	1,746	-3,265	465	-1,054	-2,837
May.	-6,711	-1,799	-6,910	7,411	4,517	5,018	7,560
June.	5,337	4,880	-428	-3,166	6,574	2,980	-1,965
July.	2,428	13,392	-2,358	-1,501	7,612	3,752	-15,901
Aug.	(-6,844)	(-19,068)	(2,179)	(-2,530)	(11,950)	(11,600)	(-3,809)

	Claims on residents of the euro-area						Claims on non-residents of the euro area	Other counterparts
	Finance to general government		Finance to other residents			Total		
	Total	<i>of which:</i> bonds		<i>of which:</i> bonds	<i>of which:</i> holding of shares/other equity			
	<i>S694706M</i>	<i>S685772M</i>	<i>S733156M</i>	<i>S717344M</i>	<i>S725899M</i>	<i>S741113M</i>	<i>S748692M</i>	<i>S258764M</i>
2008	15,891	3,729	121,264	42,490	-6,831	137,155	-7,090	-7,449
2009	61,936	49,254	52,612	4,987	10,233	114,548	3,716	5,592
2010 - July	1,436	1,479	-5,602	-2,882	265	-4,166	2,762	3,374
Aug.	-1,015	-1,613	1,812	-1,323	-145	797	3,306	-21,425
Sept.	648	590	34,240	5,154	3,019	34,888	376	-26,748
Oct.	2,177	3,151	-19,771	-2,676	-1,341	-17,594	548	33,844
Nov.	9,354	6,622	37,712	4,021	3,208	47,066	-2,824	-38,062
Dec.	30	-2,996	279	-6,650	983	309	43	4,998
2011 - Jan.	5,727	2,727	8,211	-894	-1,293	13,938	4,991	-16,611
Feb.	-8,020	-7,497	6,673	3,579	-239	-1,347	-2,265	-3,723
Mar.	-6,830	-7,416	-5,942	-5,864	1,497	-12,772	4,182	-21,851
Apr.	4,765	4,215	-1,425	3,110	2,645	3,340	-2,027	18,233
May	8,008	7,231	6,702	-7,124	4,563	14,710	1,835	-12,477
June.....	10,157	9,830	5,131	837	-5,404	15,288	-84	-3,972
July	8,768	11,584	-11,238	-2,485	-455	-2,470	3,504	2,638
Aug.	(10,407)	(12,274)	(1,305)	(2,909)	(468)	(11,712)	(2,124)	(-31,956)

Table 1.4a
TAM10400

Balance sheet of the Bank of Italy: assets

(end of period amounts in millions of euros)

	Gold and gold receivables	Claims on non-euro-area residents		Lending to euro-area financial sector counterparties denominated in euros					
			of which: receivables from the IMF		Refinancing operations		Fine-tuning reverse operations	Marginal lending facilities	Credits related to margin calls and other claims
					Main	Longer term			
	<i>S034162M</i>	<i>S954323M</i>	<i>S347791M</i>	<i>S453206M</i>	<i>S486433M</i>	<i>S500879M</i>	<i>S980349M</i>	<i>S528886M</i>	<i>S999299M</i>
2008	48,995	26,658	1,793	50,498	12,980	36,976	..	383	160
2009	60,410	31,783	8,369	27,515	1,945	25,193	378
2010 - July	70,733	36,160	9,465	40,244	12,540	27,220	484
Aug.	77,461	36,777	9,629	36,188	8,404	27,167	617
Sept.	75,490	35,162	9,264	31,647	5,157	24,943	10	..	1,537
Oct.	76,613	35,095	9,215	33,708	7,303	24,646	..	70	1,690
Nov.	83,905	36,669	9,504	31,320	3,616	25,038	..	99	2,568
Dec.	83,197	35,750	9,483	50,589	16,558	31,013	65	..	2,954
2011 - Jan.	76,399	36,031	9,330	49,931	16,816	30,597	2,518
Feb.	80,402	35,327	9,210	42,753	8,993	31,244	2,516
Mar.	79,844	35,609	9,698	36,256	6,103	29,960	193
Apr.	81,455	31,909	9,605	43,367	11,015	29,720	2,633
May	84,199	33,676	10,431	33,468	3,754	27,073	2,642
June	82,112	33,278	10,380	43,948	10,599	30,716	2,633
July	90,023	34,342	10,775	83,171	35,874	44,613	2,684
Aug.	98,932	34,127	10,708	87,767	20,536	64,551	2,681

	Claims on euro-area residents denominated in foreign currency	Securities issued by euro-area residents	Claims on general government	Intra-Eurosystem claims			Other assets	Total
					of which: participation in ECB capital	of which: claims deriving from the transfer of foreign reserves		
	<i>S357439M</i>	<i>S555124M</i>	<i>S582769M</i>	<i>S538242M</i>	<i>S670688M</i>	<i>S683411M</i>	<i>S692767M</i>	<i>S726017M</i>
2008	6,952	42,439	18,103	31,392	722	7,218	45,114	270,152
2009	1,658	52,247	18,823	63,211	736	7,199	50,086	305,734
2010 - July	2,175	74,868	18,601	41,536	736	7,199	50,754	335,072
Aug.	2,538	78,296	19,062	36,071	736	7,199	51,331	337,723
Sept.	2,156	79,333	18,821	23,395	736	7,199	51,174	317,178
Oct.	1,925	82,450	18,760	37,879	736	7,199	51,378	337,808
Nov.	2,117	82,832	17,678	38,459	736	7,199	49,198	342,178
Dec.	2,065	83,947	17,655	11,843	945	7,199	48,818	333,864
2011 - Jan.	1,436	83,678	17,628	35,844	945	7,199	49,008	349,955
Feb.	1,466	83,504	17,348	27,778	945	7,199	49,085	337,661
Mar.	1,251	83,527	17,370	8,967	945	7,199	49,644	312,468
Apr.	885	83,582	17,427	20,162	945	7,199	51,203	329,991
May	969	85,913	17,553	22,009	945	7,199	50,507	328,296
June	1,070	86,596	17,325	14,141	945	7,199	51,285	329,755
July	1,082	85,770	16,227	8,144	945	7,199	50,170	368,928
Aug.	1,101	96,222	16,313	8,144	945	7,199	50,261	392,866

Table 1.4b
TAM10410

Balance sheet of the Bank of Italy: liabilities

(end of period amounts in millions of euros)

	Banknotes in circulation	Liabilities to euro-area financial sector counterparties denominated in euros						Liabilities to other euro-area residents denominated in euros
			Current accounts (covering the minimum reserves system)	Deposit facility	Fixed-term deposits	Fine-tuning reverse operations	Deposits related to margin calls	
	S777534M	S781721M	S844034M	S914820M	S925268M	S936415M	S005847M	S976464M
2008	126,159	35,441	28,435	6,966	41	19,413
2009	132,840	34,313	26,283	8,030	31,027
2010 - July	135,175	19,357	17,425	1,873	60	61,785
Aug	134,079	19,545	19,230	315	56,066
Sept	133,983	13,528	13,340	154	33	46,354
Oct	134,259	18,561	18,402	159	60,911
Nov	134,547	19,616	18,874	741	58,068
Dec	138,324	22,740	20,226	2,515	42,518
2011 - Jan.	134,957	17,361	17,120	241	75,840
Feb	134,774	17,580	17,180	400	60,445
Mar	135,416	20,347	20,009	338	34,294
Apr	137,094	24,552	24,240	312	46,031
May	137,686	20,555	20,218	337	44,379
June	139,164	20,507	20,244	263	49,790
July	140,597	21,969	21,589	380	63,029
Aug	139,629	13,888	13,119	591	177	43,995

	Liabilities to non-euro-area residents	Liabilities to euro-area residents denominated in foreign currency	Revaluation accounts	Capital and reserves	Intra-Eurosystem liabilities	Other liabilities	of which: Counterpart SDR	Total
	S036784M	S047488M	S143944M	S157776M	S695409M	S218927M	S113582M	S229220M
2008	203	411	36,599	19,622	13,313	18,989	777	270,152
2009	314	419	49,448	20,079	10,358	26,935	7,156	305,734
2010 - July	983	526	63,073	20,687	6,019	27,466	7,665	335,072
Aug	875	518	72,117	20,687	5,711	28,126	7,826	337,723
Sept	1,933	466	67,307	20,687	4,926	27,995	7,498	317,178
Oct	2,014	505	67,924	20,687	4,593	28,356	7,459	337,808
Nov	2,882	626	72,350	20,687	4,427	28,976	7,719	342,178
Dec	2,951	623	71,093	21,149	7,093	27,372	7,626	333,864
2011 - Jan.	3,157	619	63,436	21,149	5,753	27,683	7,502	349,955
Feb	2,957	575	66,799	21,149	5,084	28,297	7,478	337,661
Mar	3,238	555	64,961	21,149	4,566	27,941	7,339	312,468
Apr	2,902	517	65,109	21,149	4,427	28,210	7,173	329,991
May	2,887	529	69,250	21,149	3,000	28,860	7,318	328,296
June	2,703	510	65,853	21,429	1,737	28,063	7,282	329,755
July	2,850	579	71,078	21,429	18,845	28,553	7,374	368,928
Aug	2,761	560	81,542	21,429	59,736	29,327	7,324	392,866

Official Eurosystem interest rates

(percentages)

Date announced	Deposits and marginal lending facility operations			Main refinancing operations		
	Date effective	Deposit facility	Marginal lending facility	Date effective	Fixed rate (fixed rate tenders)	Minimum bid rate (variable rate tenders)
S743237A	S927443A	S939666A	S948632A	S834267A	S616974A	S998197A
22.12.1998	1.1.1999	2.00	4.50	7.1.1999	3.00	-
22.12.1998	4.1.1999	2.75	3.25	-	-	-
22.12.1998	22.1.1999	2.00	4.50	-	-	-
8.4.1999	9.4.1999	1.50	3.50	14.4.1999	2.50	-
4.11.1999	5.11.1999	2.00	4.00	10.11.1999	3.00	-
3.2.2000	4.2.2000	2.25	4.25	9.2.2000	3.25	-
16.3.2000	17.3.2000	2.50	4.50	22.3.2000	3.50	-
27.4.2000	28.4.2000	2.75	4.75	4.5.2000	3.75	-
8.6.2000	9.6.2000	3.25	5.25	15.6.2000	4.25	-
8.6.2000	-	-	-	28.6.2000	-	4.25
31.8.2000	1.9.2000	3.50	5.50	6.9.2000	-	4.50
5.10.2000	6.10.2000	3.75	5.75	11.10.2000	-	4.75
10.5.2001	11.5.2001	3.50	5.50	15.5.2001	-	4.50
30.8.2001	31.8.2001	3.25	5.25	5.9.2001	-	4.25
17.9.2001	18.9.2001	2.75	4.75	19.9.2001	-	3.75
8.11.2001	9.11.2001	2.25	4.25	14.11.2001	-	3.25
5.12.2002	6.12.2002	1.75	3.75	11.12.2002	-	2.75
6.3.2003	7.3.2003	1.50	3.50	12.3.2003	-	2.50
5.6.2003	6.6.2003	1.00	3.00	9.6.2003	-	2.00
1.12.2005	6.12.2005	1.25	3.25	6.12.2005	-	2.25
2.3.2006	8.3.2006	1.50	3.50	8.3.2006	-	2.50
8.6.2006	15.6.2006	1.75	3.75	15.6.2006	-	2.75
3.8.2006	9.8.2006	2.00	4.00	9.8.2006	-	3.00
5.10.2006	11.10.2006	2.25	4.25	11.10.2006	-	3.25
7.12.2006	13.12.2006	2.50	4.50	13.12.2006	-	3.50
8.3.2007	14.3.2007	2.75	4.75	14.3.2007	-	3.75
6.6.2007	13.6.2007	3.00	5.00	13.6.2007	-	4.00
3.7.2008	9.7.2008	3.25	5.25	9.7.2008	-	4.25
8.10.2008	8.10.2008	2.75	4.75	-	-	-
8.10.2008	9.10.2008	3.25	4.25	15.10.2008	3.75	-
6.11.2008	12.11.2008	2.75	3.75	12.11.2008	3.25	-
4.12.2008	10.12.2008	2.00	3.00	10.12.2008	2.50	-
18.12.2008	21.1.2009	1.00	3.00	-	-	-
15.1.2009	21.1.2009	1.00	3.00	21.1.2009	2.00	-
5.3.2009	11.3.2009	0.50	2.50	11.3.2009	1.50	-
2.4.2009	8.4.2009	0.25	2.25	8.4.2009	1.25	-
7.5.2009	13.5.2009	0.25	1.75	13.5.2009	1.00	-
7.4.2011	13.4.2011	0.50	2.00	13.4.2011	1.25	-
7.7.2011	13.7.2011	0.75	2.25	13.7.2011	1.50	-

Eurosysteem monetary policy operations allotted by the Bank of Italy through tenders

(millions of euros; interest rates as annual percentages; daily data)

Date of settlement	Amount		Fixed rate tenders	Variable-rate tenders			Running for ...days
	Bids	Allotment		Minimum bid rate	Marginal rate	Weighted average rate	
	S564033D	S889281D	S162532D	S022846D	S918373D	S928120D	S937249D
MAIN REFINANCING OPERATIONS							
2011 - Apr. 27.....	11,015	11,015	1.25	-	-	-	7
2011 - May 4.....	7,227	7,227	1.25	-	-	-	7
2011 - May 11.....	4,129	4,129	1.25	-	-	-	7
2011 - May 18.....	4,065	4,065	1.25	-	-	-	7
2011 - May 25.....	3,754	3,754	1.25	-	-	-	7
2011 - June 1.....	2,483	2,483	1.25	-	-	-	7
2011 - June 8.....	3,062	3,062	1.25	-	-	-	7
2011 - June 15.....	7,039	7,039	1.25	-	-	-	7
2011 - June 22.....	17,631	17,631	1.25	-	-	-	7
2011 - June 29.....	10,599	10,599	1.25	-	-	-	7
2011 - July 6.....	6,984	6,984	1.25	-	-	-	7
2011 - July 13.....	19,470	19,470	1.50	-	-	-	7
2011 - July 20.....	48,133	48,133	1.50	-	-	-	7
2011 - July 27.....	35,874	35,874	1.50	-	-	-	7
2011 - Aug. 3.....	33,601	33,601	1.50	-	-	-	7
2011 - Aug. 10.....	20,460	20,460	1.50	-	-	-	7
2011 - Aug. 17.....	17,927	17,927	1.50	-	-	-	7
2011 - Aug. 24.....	22,511	22,511	1.50	-	-	-	7
2011 - Aug. 31.....	20,536	20,536	1.50	-	-	-	7
2011 - Sept. 7.....	19,436	19,436	1.50	-	-	-	7
LONGER-TERM REFINANCING OPERATIONS							
	S971139D	S980124D	S451687D		S991005D	S998351D	S007260D
2011 - June 30.....	20,082	20,082	1.25	-	-	-	91
2011 - July 13.....	2,766	2,766	1.50	-	-	-	28
2011 - July 28.....	19,088	19,088	1.50	-	-	-	91
2011 - Aug. 10.....	12,541	12,541	1.50	-	-	-	35
2011 - Aug. 11.....	10,163	10,163	1.50	-	-	-	203
2011 - Sept. 1.....	1,695	1,695	1.50	-	-	-	91
OTHER OPERATIONS							
	S450762D	S937242D	S952858D	S793304D	S967007D	S980452D	S991423D
2011 - Aug. 17.....	-215	-215	-	0.80	1.00	1.05	7
2011 - Aug. 24.....	-270	-130	-	0.84	1.00	1.00	7
2011 - Aug. 31.....	-200	-177	-	0.80	1.00	1.05	7
2011 - Sept. 7.....	-130	-	-	-	-	-	7
2011 - Sept. 13.....	-3,095	-3,095	-	0.85	1.18	1.28	1

Table 1.7a

TAM10700

Minimum reserve statistics - Reserve base of banks resident in Italy subject to reserve requirements

(end of period amounts in millions of euros)

	Total liabilities subject to the reserve requirement	Liabilities to which a 2% reserve coefficient is applied		Liabilities to which a 0% reserve coefficient is applied		
		Deposits (overnight; up to 2 years' agreed maturity; redeemable at notice up to 2 years)	Debt securities up to 2 years' agreed maturity	Deposits (over 2 years' agreed maturity; redeemable at notice over 2 years)	Repos	Debt securities over 2 years' agreed maturity
	<i>S818869M</i>	<i>S857599M</i>	<i>S912913M</i>	<i>S941509M</i>	<i>S951125M</i>	<i>S957661M</i>
2008	2,049,340	1,172,409	52,926	60,490	126,756	636,759
2009	2,173,420	1,255,682	66,932	49,999	102,713	698,094
2010 - July.....	2,221,243	1,228,638	56,150	93,318	142,440	700,698
Aug.....	2,215,378	1,221,399	55,571	95,303	139,261	703,844
Sept.....	2,226,060	1,221,131	55,811	94,149	148,304	706,666
Oct.	2,230,891	1,229,853	53,083	93,578	144,686	709,690
Nov.	2,158,392	1,216,837	51,273	88,297	167,550	634,436
Dec.....	2,180,502	1,246,642	50,616	79,182	173,148	630,914
2011 - Jan.	2,156,736	1,216,472	50,494	95,509	162,121	632,141
Feb.	2,164,943	1,213,709	52,562	93,011	166,905	638,756
Mar.	2,178,008	1,208,539	53,681	97,956	158,563	659,269
Apr.....	2,180,767	1,210,742	57,369	97,036	158,279	657,340
May	2,196,506	1,209,577	57,333	99,090	162,180	668,325
June	2,196,092	1,210,425	58,425	97,902	161,908	667,432
July.....	2,179,448	1,193,611	59,504	95,705	163,175	667,451
Aug.....	(2,168,312)	(1,177,610)	(57,992)	(94,469)	(169,306)	(668,934)

Table 1.7b

TAM10710

Minimum reserve statistics - Reserve maintenance by banks resident in Italy

(average maintenance period amounts in millions of euros; interest rates as annual percentages)

Maintenance period ending		Required reserves	Credit institutions' current accounts	Excess reserves	Deficiencies	Interest rate on minimum reserves
<i>month</i>	<i>day</i>	<i>S966619M</i>	<i>S999640M</i>	<i>S010530M</i>	<i>S056748M</i>	<i>S246450M</i>
2008	dic.	23,646	23,689	43	..	3.25
2009	dic.	25,707	25,781	74	..	1.00
2010 - Aug.....	10	26,049	26,121	72	..	1.00
Sept.....	7	25,696	25,734	38	..	1.00
Oct.	12	25,622	25,658	36	..	1.00
Nov.	9	25,466	25,514	48	..	1.00
Dec.....	7	25,466	25,515	49	..	1.00
2011 - Jan.	18	25,587	25,627	40	1	1.00
Feb.....	8	25,290	25,322	32	1	1.00
Mar.	8	25,873	25,916	43	..	1.00
Apr.....	12	25,268	25,300	32	..	1.00
May	10	25,524	25,323	69	..	1.25
June	14	25,173	25,209	36	..	1.25
July.....	12	25,291	25,352	61	1	1.25
Aug.....	9	25,267	25,348	81	..	1.50
Sept.....	13	25,306	25,366	60	..	1.50

Banking system's liquidity position: Italian contribution

(maintenance period average amounts in millions of euros)

Maintenance period ending:		Liquidity-providing factors					
		Net assets in gold and foreign currency	Intra-Eurosystem net claims	Monetary policy operations			
				Main refinancing operations	Longer-term refinancing operations	Marginal lending facility	Other liquidity-providing operations
<i>month</i>	<i>day</i>	<i>S003675M</i>	<i>S246592M</i>	<i>S274091M</i>	<i>S283242M</i>	<i>S289794M</i>	<i>S297048M</i>
2008	dic.	75,324	24,976	33,798	7,709	9	5
2009	dic.	85,747	60,352	1,994	23,418	..	22
2010 - Sept.	7	117,134	23,044	6,693	26,883
Oct.	12	114,649	27,546	5,682	25,780	..	2
Nov.	9	110,757	23,245	6,155	24,121	60	..
Dec.	7	110,793	25,403	4,036	24,475	71	..
2011 - Jan.	18	114,989	20,387	10,021	29,241	..	19
Feb.	8	119,534	18,759	18,948	30,465
Mar.	8	119,526	16,938	9,635	30,812
Apr.	12	118,012	9,861	5,750	30,612
May.	10	113,066	5,575	6,598	29,520
June	14	112,825	11,451	3,499	28,189
July	12	114,106	12,076	10,563	29,024
Aug.	9	115,837	-23,123	34,269	38,176	1	..
Sept.	13	115,975	-62,674	20,174	63,896

Maintenance period ending		Liquidity-absorbing factors					Credit institutions' current accounts with the central bank	Italian contribution to base money
		Monetary policy operations		Currency in circulation (b)	Central government deposits	Other factors (net)		
		Other liquidity-absorbing operations	Deposit facility (a)				(c)	(a+b+c)
month	day	S227610M	S303829M	S312726M	S343364M	S354855M	S398166M	S405722M
2008	dic.	130	4,320	135,200	27,330	-48,848	23,689	163,209
2009	dic.	262	2,121	142,995	46,620	-46,247	25,781	170,897
2010 - Sept.	7	117	169	150,375	40,727	-43,369	25,734	176,279
Oct.	12	50	175	149,955	46,673	-48,853	25,658	175,788
Nov.	9	134	250	149,878	44,083	-55,521	25,514	175,642
Dec.	7	9	462	150,332	45,471	-57,011	25,515	176,309
2011 - Jan.	18	42	719	154,081	48,038	-53,403	25,180	179,981
Feb.	8	156	417	150,243	59,909	-48,342	25,323	175,982
Mar.	8	90	362	150,440	48,989	-48,888	25,916	176,718
Apr.	12	35	345	151,478	38,019	-50,942	25,300	177,123
May	10	156	567	153,168	31,946	-56,402	25,323	179,058
June	14	8	393	153,216	37,033	-59,893	25,209	178,817
July	12	25	647	154,956	47,784	-62,995	25,352	180,955
Aug.	9	173	984	157,053	43,165	-61,563	25,348	183,385
Sept.	13	193	960	156,984	22,648	-68,782	25,366	183,311

Money and Banking

Table 1.9a
TAM10900

Balance sheet of other MFIs resident in Italy: assets (stocks in millions of euros)

	Cash	Loans						
		Residents of Italy			Residents of other euro-area countries			Rest of the world
		MFIs	General government	Other sectors	MFIs	General government	Other sectors	
	<i>S562518M</i>	<i>S589956M</i>	<i>S599104M</i>	<i>S612202M</i>	<i>S621694M</i>	<i>S634800M</i>	<i>S645671M</i>	<i>S655611M</i>
2009	11,647	580,425	247,678	1,552,593	79,275	367	34,821	64,219
2010 - Aug.....	9,723	530,578	253,264	1,638,022	76,218	424	31,776	77,678
Sept.....	9,671	533,768	255,080	1,659,018	73,486	424	33,342	75,952
Oct.	9,011	529,765	254,116	1,647,355	71,968	413	33,301	76,204
Nov.	10,161	381,340	256,853	1,677,480	70,800	413	33,871	74,152
Dec.....	11,155	375,022	259,760	1,682,065	77,253	466	34,374	75,103
2011 - Jan.	10,080	376,371	262,734	1,704,192	74,382	490	33,954	79,136
Feb.....	9,710	382,587	262,211	1,707,553	80,269	490	33,534	78,000
Mar.	9,571	379,067	262,751	1,701,707	75,570	535	36,794	81,097
Apr.	10,386	381,837	263,362	1,697,913	74,225	573	32,401	80,873
May	10,349	386,354	264,141	1,709,296	69,455	571	30,164	83,384
June	10,257	375,126	264,428	1,716,897	72,558	611	31,076	84,588
July	10,348	379,218	261,613	1,710,413	74,381	611	29,469	87,883
Aug.....	(9,874)	(379,759)	(259,736)	(1,709,075)	(73,526)	(621)	(28,248)	(91,333)
	Holdings of securities other than shares, at market value							
	Residents of Italy			Residents of other euro-area countries			Rest of the world	
	MFIs	General government	Other sectors	MFIs	General government	Other sectors		
	<i>S953876M</i>	<i>S140793M</i>	<i>S154530M</i>	<i>S184537M</i>	<i>S166032M</i>	<i>S181158M</i>	<i>S665123M</i>	
2009	212,851	198,227	65,289	25,772	11,522	26,780	20,601	
2010 - Aug.....	218,090	239,983	141,549	23,373	8,904	27,374	20,363	
Sept.....	217,961	239,015	145,896	23,180	8,883	28,369	20,016	
Oct.	211,181	239,054	142,815	22,648	8,956	27,267	19,344	
Nov.	208,252	242,946	146,968	22,161	8,565	26,757	19,434	
Dec.....	208,278	238,786	140,287	21,801	8,029	26,248	19,025	
2011 - Jan.	207,360	242,294	138,597	21,902	7,847	26,440	18,732	
Feb.....	205,375	234,776	142,590	22,016	7,441	25,942	18,307	
Mar.	212,620	226,374	136,299	22,816	7,240	25,517	18,094	
Apr.	212,442	228,173	139,795	23,016	7,209	27,894	18,104	
May	217,894	234,278	132,439	22,766	7,397	28,417	18,238	
June	219,177	239,721	132,632	22,539	8,782	29,560	17,767	
July	221,916	246,205	130,269	22,676	9,307	29,456	17,041	
Aug.....	(227,719)	(253,175)	(133,351)	(22,144)	(8,408)	(29,438)	(16,447)	
	Shares and other equity					Fixed assets	Other assets	Total assets
	Residents of Italy		Residents of other euro-area countries		Rest of the world			
	MFIs	Other sectors	MFIs	Other sectors				
	<i>S678647M</i>	<i>S687287M</i>	<i>S694873M</i>	<i>S737997M</i>	<i>S745236M</i>	<i>S753273M</i>	<i>S766152M</i>	<i>S200055M</i>
2009	87,910	64,196	46,486	16,197	10,757	81,902	306,948	3,746,465
2010 - Aug.....	89,222	65,095	48,325	16,888	11,330	82,188	392,894	4,003,261
Sept.....	89,260	69,292	48,482	15,204	11,261	82,411	364,656	4,004,629
Oct.	89,207	68,108	48,511	15,599	11,684	82,480	350,425	3,959,411
Nov.	74,463	70,868	48,506	15,371	12,388	83,059	345,037	3,829,845
Dec.....	74,436	71,815	48,629	15,269	11,601	84,015	305,798	3,789,215
2011 - Jan.	77,629	69,018	48,673	17,422	11,602	84,158	295,895	3,808,908
Feb.....	78,073	69,395	48,785	17,145	11,544	84,099	294,556	3,814,399
Mar.	78,207	69,959	48,756	17,463	11,758	84,125	278,827	3,785,146
Apr.	78,757	71,340	49,166	18,936	11,754	84,312	279,269	3,791,737
May	79,599	76,193	48,774	17,808	11,938	84,463	292,142	3,826,060
June	77,969	70,260	48,481	17,124	11,014	83,170	280,425	3,814,159
July	77,855	68,147	48,860	17,211	11,643	83,197	310,201	3,847,918
Aug.....	(77,561)	(67,289)	(48,606)	(17,265)	(10,751)	(83,060)	(329,956)	(3,877,345)

In November 2010 some time series related to positions towards domestic MFIs show a statistical break; for more information see Methodological Appendix, par. 2.3.

Balance sheet of other MFIs resident in Italy: liabilities

(stocks in millions of euros)

	Deposits						
	Residents of Italy			Residents of other euro-area countries			Rest of the world
	MFIs	Central government	Other general government and other sectors	MFIs	Central government	Other general government and other sectors	
	S640722M	S390776M	S273355M	S400654M	S408710M	S287103M	S416254M
2009	569,741	16,164	1,185,302	207,304	30	24,394	194,208
2010 - Aug.....	549,400	17,784	1,342,669	238,890	28	24,722	192,198
Sept.....	553,002	16,934	1,353,303	229,371	25	28,301	191,325
Oct.	550,144	17,462	1,359,806	224,695	18	26,443	189,303
Nov.....	394,580	17,598	1,364,968	220,682	22	26,115	196,316
Dec.....	405,068	16,947	1,399,946	229,048	18	24,383	189,734
2011 - Jan.	410,560	16,956	1,376,400	243,403	327	24,116	186,908
Feb.....	416,322	16,328	1,370,350	243,794	24	24,820	193,185
Mar.....	401,372	16,449	1,359,444	242,718	26	26,979	188,360
Apr.....	403,586	17,496	1,372,585	254,282	44	25,449	182,083
May	401,551	17,374	1,360,952	248,730	44	25,863	191,201
June	404,124	16,689	1,366,426	245,708	94	22,985	189,211
July.....	443,558	16,845	1,370,043	249,364	40	21,701	169,371
Aug.....	(454,144)	(16,818)	(1,368,831)	(245,878)	(42)	(21,483)	(165,696)

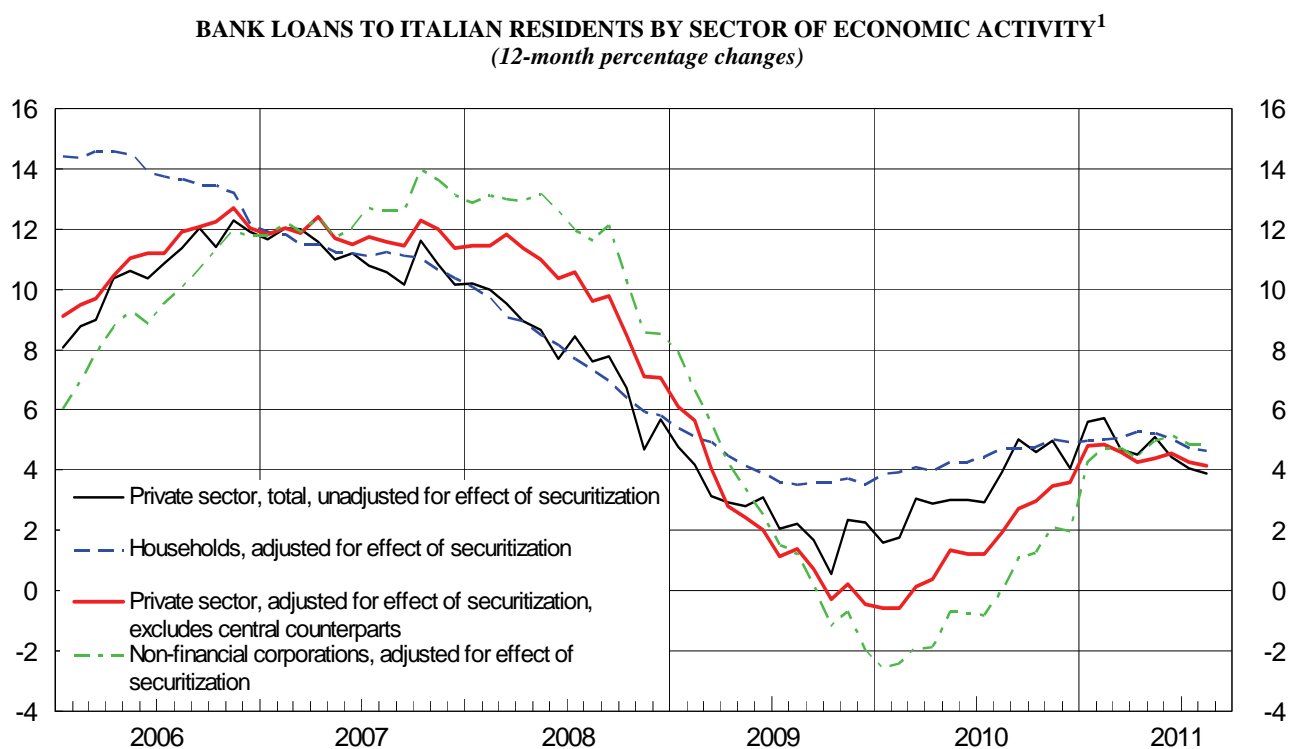
	Money market funds shares/ units	Debt securities issued	Capital and reserves	Other liabilities	Total
	S424528M	S303540M	S434899M	S442597M	S215509M
2009	55,133	819,601	293,936	380,651	3,746,465
2010 - Aug.....	45,786	811,148	360,869	419,766	4,003,261
Sept.....	44,407	815,103	361,274	411,585	4,004,629
Oct.	43,067	812,907	361,511	374,054	3,959,410
Nov.....	41,148	812,320	345,781	410,315	3,829,844
Dec.....	38,585	807,081	349,435	328,968	3,789,215
2011 - Jan.	37,413	807,086	363,069	342,670	3,808,908
Feb.....	36,624	811,385	368,463	333,102	3,814,399
Mar.....	34,578	832,162	368,296	314,761	3,785,145
Apr.....	34,053	834,959	370,058	297,142	3,791,737
May	33,699	845,974	373,877	326,795	3,826,060
June	33,395	844,003	379,941	311,584	3,814,159
July.....	32,956	847,183	382,172	314,686	3,847,918
Aug.....	(32,786)	(848,170)	(382,362)	(341,134)	(3,877,343)

In November 2010 deposits from domestic MFIs and "capital and reserves" show a statistical break; for more information see Methodological Appendix, par. 2.3.

Section 2

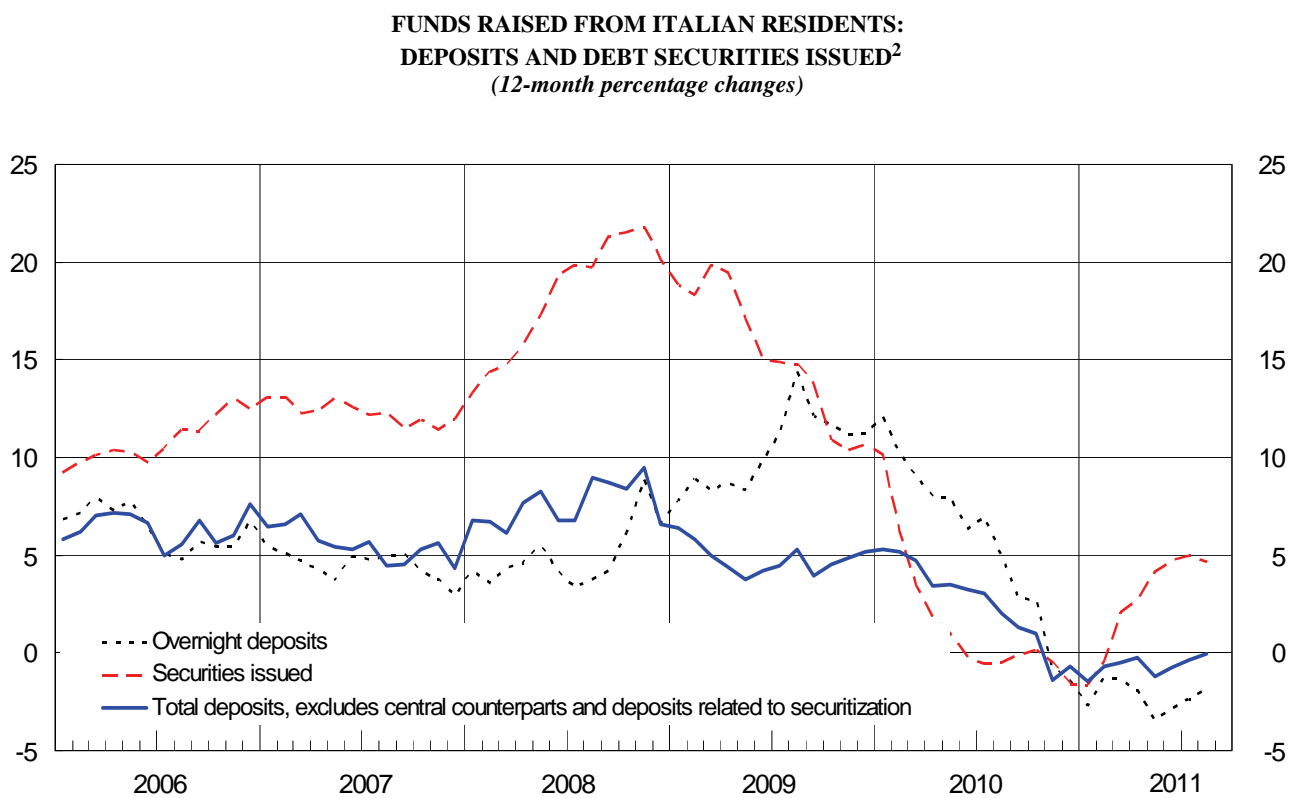
**Banks:
balance sheet and other information**

Figure 2.1



(1) See Methodological appendix

Figure 2.2



(2) See Methodological appendix

Money and Banking

Table 2.1a

TSC20100

Balance sheet of banks resident in Italy: assets

(end-of-period stocks in millions of euros)

end-of-period stocks in millions of euros)							
	Cash	Loans			Securities other than shares, at market value		
		Residents of Italy	Residents of other euro-area countries	Rest of the world	Residents of Italy		
					MFIs	Central government	Other sectors
	<i>S221763M</i>	<i>S685169M</i>	<i>S778594M</i>	<i>S793529M</i>	<i>S016397M</i>	<i>S990079M</i>	<i>S028395M</i>
2009	11,647	2,374,454	112,371	62,906	210,698	163,245	64,878
2010 - Aug.....	9,723	2,418,307	107,766	77,338	216,356	205,477	141,160
Sept.....	9,671	2,442,970	106,786	75,922	216,066	206,116	145,525
Oct.	9,011	2,427,895	105,141	75,893	209,189	206,117	142,449
Nov.	10,161	2,312,660	105,084	73,935	206,323	210,980	146,614
Dec.....	11,155	2,314,521	112,093	75,047	206,427	208,236	140,127
2011 - Jan.	10,080	2,341,449	108,826	79,047	205,535	212,357	138,475
Feb.....	9,710	2,351,673	114,293	77,729	203,616	204,366	142,438
Mar.	9,571	2,342,635	112,899	80,671	210,529	198,410	136,151
Apr.	10,386	2,342,430	107,198	80,640	210,399	199,586	139,647
May	10,349	2,358,782	100,190	83,061	215,902	206,999	132,294
June	10,257	2,354,574	104,245	84,186	217,276	213,360	132,489
July	10,348	2,350,153	104,460	87,682	220,074	219,573	130,199
Aug.....	(9,874)	(2,347,302)	(102,217)	(91,016)	(225,777)	(226,955)	(133,282)
	Securities other than shares, at market value			Securities other than shares of the rest of the world	Shares and other equity		
	Residents of other euro-area countries				Residents of Italy		
	MFIs	Central government	Other sectors		MFIs	Other sectors	
	<i>S051255M</i>	<i>S039781M</i>	<i>S062554M</i>	<i>S967226M</i>	<i>S312876M</i>	<i>S352420M</i>	
2009	23,726	6,772	26,103	19,059	87,910	64,196	
2010 - Aug.....	21,701	7,138	26,858	19,103	89,222	65,095	
Sept.....	21,593	7,052	27,881	18,820	89,260	69,292	
Oct.	21,208	7,205	26,791	18,315	89,207	68,108	
Nov.	20,749	6,776	26,371	18,438	74,463	70,868	
Dec.....	20,425	6,502	25,885	18,052	74,436	71,815	
2011 - Jan.	20,550	6,345	26,091	17,900	77,629	69,018	
Feb.....	20,650	5,887	25,655	17,463	78,073	69,395	
Mar.	21,428	5,898	25,236	17,244	78,207	69,959	
Apr.	21,694	5,722	27,594	17,260	78,757	71,340	
May	21,446	6,136	28,137	17,380	79,599	76,193	
June	21,251	7,242	29,293	16,953	77,969	70,260	
July	21,392	7,715	29,198	16,216	77,855	68,147	
Aug.....	(20,969)	(6,995)	(29,199)	(15,579)	(77,561)	(67,289)	
	Shares and other equity			Money market fund shares/units	Fixed assets	Other assets	Total assets
	Residents of other euro-area countries		Rest of the world				
	MFIs	Other sectors					
	<i>S361161M</i>	<i>S366484M</i>	<i>S373891M</i>	<i>S399788M</i>	<i>S420100M</i>	<i>S427463M</i>	<i>S463168M</i>
2009	46,486	16,171	10,757	995	81,902	306,420	3,690,692
2010 - Aug.....	48,325	16,854	11,330	1,177	82,188	391,662	3,956,780
Sept.....	48,482	15,170	11,261	1,087	82,411	363,827	3,959,192
Oct.	48,511	15,565	11,684	964	82,480	349,739	3,915,471
Nov.	48,506	15,337	12,388	883	83,059	344,552	3,788,145
Dec.....	48,629	15,235	11,601	810	84,015	305,102	3,750,113
2011 - Jan.	48,673	17,388	11,602	807	84,158	294,931	3,770,859
Feb.....	48,785	17,111	11,544	875	84,099	293,708	3,777,069
Mar.	48,756	17,429	11,758	1,074	84,125	278,201	3,750,180
Apr.	49,166	18,902	11,754	949	84,312	278,771	3,756,509
May	48,774	17,774	11,938	913	84,463	291,484	3,791,814
June	48,481	17,095	11,014	890	83,170	279,991	3,779,996
July	48,860	17,183	11,643	842	83,197	309,804	3,814,541
Aug.....	(48,606)	(17,237)	(10,751)	(940)	(83,060)	(329,425)	(3,844,034)

In November 2010 some time series related to positions towards domestic MFIs show a statistical break; for more information see Methodological Appendix.

Table 2.1b

TSC20110

Balance sheet of banks resident in Italy: liabilities

(end-of-period stocks in millions of euros)

	Deposits							
	Residents of Italy				Residents of other euro-area countries			
	MFIs		Central government	Other general government - other sectors	MFIs		Central government	Other general government - other sectors
		of which: banks				of which: banks		
	S305929M	S260954M	S283388M	S295597M	S358514M	S316791M	S332233M	S344636M
2009	569,733	565,804	16,164	1,185,302	207,304	206,543	30	24,394
2010 - Aug.	549,397	546,668	17,784	1,342,667	238,890	238,040	28	24,722
Sept.	552,944	550,084	16,934	1,353,303	229,371	228,762	25	28,301
Oct.	550,133	547,753	17,462	1,359,806	224,695	224,324	18	26,443
Nov.	394,566	392,191	17,598	1,364,968	220,682	220,464	22	26,115
Dec.	405,053	403,300	16,947	1,399,946	229,048	228,793	18	24,383
2011 - Jan.	410,555	408,369	16,956	1,376,400	243,403	243,239	327	24,116
Feb.	416,317	414,073	16,328	1,370,350	243,794	243,604	24	24,820
Mar.	401,364	399,445	16,449	1,359,444	242,718	242,555	26	26,979
Apr.	403,546	402,601	17,496	1,372,585	254,282	254,071	44	25,449
May.	401,543	400,183	17,374	1,360,952	248,730	248,418	44	25,863
June.	404,118	402,046	16,689	1,366,426	245,708	245,458	94	22,985
July.	443,546	442,217	16,845	1,370,043	249,364	249,077	40	21,701
Aug.	(454,135)	(452,381)	(16,818)	(1,368,831)	(245,878)	(245,594)	(42)	(21,483)

	Deposits of residents of the rest of the world		Debt securities issued	Capital and reserves	Other liabilities	Total liabilities
		of which: banks				
	S369637M	S381071M	S073907M	S504043M	S975074M	S159211M
2009	194,208	154,154	819,601	293,936	380,021	3,690,692
2010 - Aug.	192,198	149,633	811,148	360,869	419,077	3,956,780
Sept.	191,325	149,319	815,103	361,274	410,613	3,959,192
Oct.	189,303	147,920	812,907	361,511	373,193	3,915,471
Nov.	196,316	154,046	812,320	345,781	409,778	3,788,145
Dec.	189,734	146,748	807,081	349,435	328,466	3,750,113
2011 - Jan.	186,908	142,949	807,086	363,069	342,039	3,770,859
Feb.	193,185	147,755	811,385	368,463	332,403	3,777,070
Mar.	188,360	144,000	832,162	368,296	314,381	3,750,179
Apr.	182,083	138,951	834,959	370,058	296,007	3,756,509
May.	191,201	145,788	845,974	373,877	326,257	3,791,815
June.	189,211	143,416	844,003	379,941	310,822	3,779,996
July.	169,371	124,319	847,183	382,172	314,277	3,814,541
Aug.	(165,696)	(118,605)	(848,170)	(382,362)	(340,617)	(3,844,033)

In November 2010 deposits from domestic MFIs and "capital and reserves" show a statistical break; for more information see Methodological Appendix.

Table 2.2
TSC20200

Funds raised from other general government and other sectors, in euros

(end-of-period stocks in millions of euros)

	Deposits								
	Residents of Italy						Residents of other euro-area countries		
	Overnight deposits	Deposits with agreed maturity			Deposits redeemable at notice	Repos	Overnight deposits	Deposits with agreed maturity	
		Up to 2 years	More than 2 years					Up to 2 years	More than 2 years
				of which: related to operations of loans sales					
	S893463M	S452906M	S419174M	S984277M	S481577M	S392256M	S906791M	S472492M	S435869M
2008	683,089	38,622	2,471	-	243,719	116,217	4,785	7,573	12,934
2009	760,399	53,017	2,938	-	263,691	85,230	4,759	4,303	14,172
2010 - July	754,248	51,812	146,910	143,710	268,965	125,453	4,403	2,642	14,092
Aug.	737,013	53,653	144,640	141,700	271,169	122,097	3,971	3,081	14,521
Sept.	736,028	54,752	149,464	146,474	271,291	128,963	5,092	3,281	14,411
Oct.	748,434	53,635	147,285	144,305	271,400	126,105	4,983	2,916	14,637
Nov.	724,165	54,657	151,136	148,503	273,273	148,593	5,294	2,710	14,036
Dec.	748,415	56,199	148,326	144,557	277,855	156,398	4,282	2,892	13,992
2011 - Jan.....	737,710	54,413	146,534	142,915	280,250	145,016	4,263	2,512	13,741
Feb.	732,926	56,169	142,330	138,128	280,139	146,493	4,906	1,732	13,713
Mar.	732,162	57,735	142,149	138,986	280,007	134,717	4,979	1,749	14,811
Apr.	740,684	56,454	147,136	143,634	279,141	136,381	3,806	1,678	14,686
May.....	731,953	56,359	140,410	137,091	278,533	140,722	4,007	1,644	14,788
June.....	732,530	56,604	140,292	137,786	278,719	145,025	5,139	1,851	14,730
July	734,669	55,910	141,796	139,065	278,690	145,463	3,697	1,773	14,707
Aug.	(721,946)	(57,446)	(144,206)	(141,666)	(280,069)	(151,639)	(3,713)	(1,678)	(14,693)

	Deposits			Debt securities issued				Total
	Residents of other euro-area countries		Deposits of the rest of the world	Up to 1 year	From 1 to 2 years	More than 2 years	Memorandum item: debt securities issued over 1 year, at variable rate	
	Deposits redeemable at notice	Repos						
	<i>S495366M</i>	<i>S405494M</i>	<i>S243823M</i>	<i>S110876M</i>	<i>S133607M</i>	<i>S145963M</i>	<i>S194982M</i>	<i>S925954M</i>
2008	117	426	28,763	..	93,181	636,301	533,950	1,868,198
2009	134	311	35,157	..	105,420	705,741	546,045	2,035,272
2010 - July	160	1,961	37,191	10	86,172	713,247	528,580	2,207,266
Aug.	155	2,386	36,773	10	85,321	716,706	530,038	2,191,495
Sept.	145	4,622	36,766	10	85,477	721,032	529,785	2,211,333
Oct.	145	3,065	35,815	10	80,670	723,720	526,806	2,212,821
Nov.	149	3,274	35,525	10	79,235	724,387	524,514	2,216,445
Dec.	155	2,568	38,674	10	78,373	720,132	520,997	2,248,270
2011 - Jan.....	157	2,972	38,426	10	77,394	721,441	518,155	2,224,839
Feb.	154	3,786	39,866	..	78,740	722,217	507,409	2,223,172
Mar.	152	4,637	39,852	..	79,867	742,181	515,484	2,234,997
Apr.	153	4,687	37,944	..	83,897	741,648	513,157	2,248,296
May.....	154	4,542	39,753	..	84,987	751,306	518,620	2,249,158
June.....	155	391	40,159	..	86,025	748,345	514,092	2,249,966
July	156	698	39,747	..	87,376	749,955	515,314	2,254,637
Aug.	(157)	(555)	(42,122)	..	(85,851)	(752,641)	(517,609)	(2,256,718)

Deposits of other residents by sector of economic activity

(end-of-period stocks in millions of euros)

	Residents of Italy								Residents of other euro-area countries		
		Other Financial Institutions		Insurance corporations and pension funds	Non financial corporations	Households			Insurance corporations, pension funds and other financial institutions	Non financial Corporations	Households
			of which: central counterparties			Consumer Households	Producer Households	Non-profit institutions serving the households			
	S854332M	S886238M	S323832M	S900518M	S912432M	S917635M	S933546M	S941516M	S355038M	S950904M	S982173M
2008	1,083,842	82,598	19,352	20,655	171,509	743,621	45,266	20,193	21,538	4,070	806
2009	1,155,565	108,934	37,145	17,209	178,857	783,947	45,847	20,491	20,500	2,792	813
2010 - July	1,329,962	285,780	83,602	18,038	182,796	775,035	47,433	20,591	20,819	1,974	787
Aug.	1,311,427	277,708	80,883	15,952	175,555	775,769	45,157	21,001	21,456	2,193	797
Sept.....	1,322,963	291,300	87,735	15,333	175,852	773,117	45,855	21,212	24,808	2,478	778
Oct.	1,329,396	283,782	86,765	16,054	187,133	773,351	47,500	21,279	22,995	2,187	813
Nov.	1,334,768	312,072	109,069	15,553	175,929	766,899	43,129	21,188	22,677	2,178	801
Dec.	1,371,248	317,662	115,872	16,532	184,457	785,540	45,872	20,886	21,395	1,770	786
2011 - Jan.	1,343,924	306,313	106,915	17,227	167,007	787,573	44,623	20,875	21,200	1,642	801
Feb.	1,339,474	302,069	107,481	16,708	166,636	787,607	45,253	20,902	21,975	1,640	804
Mar.	1,328,751	290,477	94,790	17,086	174,683	780,152	45,149	20,901	23,709	2,017	791
Apr.	1,342,831	294,268	95,686	17,179	183,143	780,214	46,947	20,777	22,920	1,372	776
May	1,331,433	291,294	98,034	16,757	178,896	777,662	45,950	20,569	22,868	1,850	793
June	1,336,035	296,453	102,848	16,120	175,871	779,998	46,340	20,949	19,560	2,176	798
July	1,339,586	293,435	102,819	16,363	184,118	778,125	46,943	20,295	18,571	1,957	796
Aug.	(1,337,914)	(302,080)	(108,734)	(16,377)	(175,670)	(778,273)	(44,432)	(20,786)	(18,225)	(1,936)	(773)

Table 2.4

TSC20300

Loans by sector of economic activity

(end-of-period stocks in millions of euros)

	Residents of Italy										
	MFIs		General Government		Other sectors						
			Central government	Local government and social security funds	Other financial institutions		Insurance corporations and pension funds	Non-financial corporations	Households		
						of which: central counterparties			Consumer households	Producer households	Non-profit institutions
	S628348M	S541849M	S554530M	S223255M	S579814M	S798896M	S591009M	S640592M	S515363M	S530259M	S675057M
2008	560,841	525,787	159,843	75,389	179,496	9,362	8,843	869,431	371,387	89,118	8,121
2009	574,183	538,991	167,749	79,929	199,222	39,013	7,947	849,025	397,218	90,910	8,271
2010 - July	535,136	515,273	169,290	83,374	190,807	26,431	8,428	856,045	476,096	94,542	8,891
Aug.	527,021	507,197	169,772	83,492	192,910	29,449	8,267	857,032	475,584	95,360	8,868
Sept. ...	528,872	514,750	171,697	83,383	204,102	37,481	8,637	863,352	476,516	97,449	8,963
Oct.	526,425	507,690	171,762	82,354	197,926	32,443	8,168	856,143	478,956	97,065	9,097
Nov.....	378,327	358,120	174,756	82,097	206,353	39,402	8,302	872,689	483,422	97,119	9,596
Dec.	372,696	349,123	178,265	81,496	215,081	38,239	7,391	867,018	483,813	99,318	9,444
2011 - Jan.	374,522	357,116	178,232	84,502	208,392	36,353	7,270	890,463	488,898	99,426	9,742
Feb.....	381,908	364,151	177,032	85,180	206,701	39,864	7,124	893,944	489,301	100,608	9,873
Mar.....	378,178	357,478	177,347	85,404	200,264	32,936	6,817	891,391	492,320	100,988	9,926
Apr.	381,155	356,612	177,162	86,201	201,181	35,733	6,584	885,236	494,903	100,246	9,764
May	385,345	365,344	177,275	86,866	196,844	33,400	6,617	897,674	497,217	101,099	9,845
June	373,249	352,727	179,281	85,147	196,829	29,125	6,522	902,956	499,346	101,370	9,875
July	378,127	356,336	175,242	86,371	190,875	25,039	6,424	900,168	502,417	100,516	10,012
Aug.	(378,491)	(364,287)	(174,613)	(85,123)	(189,305)	(27,143)	(6,376)	(900,579)	(501,579)	(101,198)	(10,038)

	Residents of other euro-area countries							Rest of the world	
	MFIs		General government	Other sectors					
				Other financial institutions	Insurance corporations and pension funds	Non-financial corporations	Households		
									of which: banks
	S755713M	S696190M	S730389M	S716420M	S743137M	S767099M	S705257M	S793529M	S816567M
2008	121,705	119,405	134	20,048	344	10,858	535	62,829	47,115
2009	79,275	77,507	367	19,961	477	11,844	446	62,906	47,779
2010 - July	83,124	82,584	424	18,581	537	11,007	454	72,780	54,857
Aug.	75,566	75,033	424	19,690	543	11,095	448	77,338	58,265
Sept. ...	73,020	72,494	424	20,870	501	11,523	448	75,922	57,574
Oct.	71,427	70,948	413	21,474	486	10,878	463	75,893	58,339
Nov.....	70,800	70,320	413	21,689	497	11,189	496	73,935	55,813
Dec.	77,253	76,747	466	21,710	442	11,718	504	75,047	57,360
2011 - Jan.	74,382	73,924	490	21,486	438	11,533	497	79,047	60,190
Feb.....	80,269	79,823	490	20,798	454	11,798	485	77,729	59,555
Mar.....	75,570	75,185	535	24,456	410	11,461	467	80,671	63,052
Apr.	74,225	73,904	573	20,673	411	10,841	476	80,640	62,956
May	69,455	69,030	571	18,526	393	10,771	475	83,061	65,799
June	72,558	72,148	611	19,089	446	11,064	476	84,186	66,174
July	74,381	73,805	611	17,662	410	10,914	482	87,682	70,000
Aug.	(73,348)	(72,914)	(621)	(16,235)	(440)	(11,102)	(470)	(91,016)	(72,585)

In November 2010 loans to domestic MFIs show a statistical break; for more information see Methodological Appendix.

Loans to residents of Italy, by maturity and type

(end-of-period stocks in millions of euros)

	General government and other residents				Non-financial corporations			
	Total	Up to 1 year	From 1 to 5 years	More than 5 years	Total	Up to 1 year	From 1 to 5 years	More than 5 years
	<i>S349700M</i>	<i>S722243M</i>	<i>S807750M</i>	<i>S819246M</i>	<i>S640592M</i>	<i>S829984M</i>	<i>S847968M</i>	<i>S878852M</i>
2008	1,761,628	610,639	259,561	891,428	869,431	348,626	158,883	361,921
2009	1,800,271	613,981	241,250	945,041	849,025	319,028	148,127	381,869
2010 - July	1,887,473	610,346	236,611	1,040,516	856,045	316,020	144,074	395,951
Aug.	1,891,285	613,061	236,011	1,042,214	857,032	316,108	143,809	397,116
Sept.	1,914,098	632,434	235,310	1,046,355	863,352	323,209	143,685	396,458
Oct.	1,901,470	615,612	233,138	1,052,720	856,143	313,690	143,247	399,206
Nov.	1,934,333	640,968	228,529	1,064,837	872,689	327,587	140,596	404,505
Dec.	1,941,825	645,737	226,417	1,069,671	867,018	320,731	140,630	405,657
2011 - Jan.	1,966,927	666,129	228,636	1,072,161	890,463	341,047	142,861	406,556
Feb.	1,969,764	664,935	228,372	1,076,457	893,944	342,790	142,702	408,452
Mar.	1,964,457	658,590	225,889	1,079,979	891,391	338,695	142,596	410,100
Apr.	1,961,276	652,467	224,948	1,083,860	885,236	331,637	142,309	411,290
May	1,973,437	656,967	227,311	1,089,160	897,674	342,122	142,386	413,166
June	1,981,325	664,241	227,452	1,089,633	902,956	347,898	141,610	413,448
July	1,972,026	655,257	224,952	1,091,816	900,168	345,762	140,104	414,301
Aug.	(1,968,811)	(652,796)	(222,550)	(1,093,465)	(900,579)	(345,618)	(138,459)	(416,502)

	Total	Households								
		Consumer credit			Lending for house purchase			Other lending		
		Up to 1 year	From 1 to 5 years	More than 5 years	Up to 1 year	From 1 to 5 years	More than 5 years	Up to 1 year	From 1 to 5 years	More than 5 years
	<i>S566656M</i>	<i>S939290M</i>	<i>S950332M</i>	<i>S963911M</i>	<i>S170272M</i>	<i>S181584M</i>	<i>S194449M</i>	<i>S206111M</i>	<i>S219203M</i>	<i>S230506M</i>
2008	468,626	1,511	23,535	29,658	64	1,676	262,548	51,824	22,852	74,959
2009	496,399	2,008	21,562	34,001	54	1,917	278,365	50,932	22,360	85,199
2010 - July ...	579,529	2,371	22,994	37,703	93	2,523	342,959	50,712	22,532	97,641
Aug. ...	579,812	2,427	22,556	37,667	92	2,554	342,699	51,299	22,509	98,009
Sept. ...	582,928	2,290	22,441	37,860	89	2,695	344,055	52,012	22,373	99,112
Oct. ...	585,117	2,353	22,199	38,145	56	2,774	345,568	51,473	22,286	100,264
Nov. ...	590,137	2,150	22,193	37,861	46	1,098	349,119	53,371	21,745	102,554
Dec. ...	592,575	2,267	22,060	38,163	48	1,101	350,963	52,368	22,087	103,516
2011 - Jan.	598,066	2,078	21,863	38,225	53	1,102	351,603	54,970	22,578	105,595
Feb. ...	599,783	1,782	21,898	38,568	52	1,075	353,163	54,877	22,460	105,909
Mar. ...	603,234	1,687	21,789	38,911	48	1,048	355,614	55,757	22,491	105,890
Apr.	604,913	1,729	21,681	39,174	34	1,049	357,256	55,123	22,543	106,325
May ...	608,161	1,743	21,628	39,577	33	1,040	358,674	55,595	22,723	107,148
June ..	610,590	1,737	21,520	39,763	30	1,024	360,331	55,783	22,700	107,701
July ...	612,946	1,948	21,487	40,383	29	1,022	362,472	54,788	22,700	108,118
Aug. ...	(612,815)	(1,922)	(21,182)	(40,319)	(27)	(1,009)	(362,039)	(55,801)	(22,581)	(107,935)

Table 2.6
TSC20500

Bad debts by sector of economic activity: residents of Italy

(end-of-period stocks in millions of euros)

	Total	Memorandum item: bad debts at estimated realizable value	General government				Total other sectors
			Total	Central government	Local government	Social security funds	
	833618M	S867225M	S122755M	S084475M	S144845M	S174384M	S163567M
2008	41,319	21,787	26	2	24	..	41,293
2009	59,166	36,036	29	2	27	..	59,137
2010 - July.....	70,056	40,593	262	2	261	..	69,794
Aug.....	71,177	41,108	262	2	261	..	70,915
Sept.....	72,924	42,564	264	2	262	..	72,660
Oct.	74,321	43,899	264	2	262	..	74,057
Nov.	75,641	44,928	264	2	262	..	75,377
Dec.....	77,837	46,518	273	11	262	..	77,564
2011 - Jan.	91,093	48,862	289	11	273	4	90,804
Feb.....	92,294	47,875	289	11	273	4	92,005
Mar.	93,877	48,848	288	11	272	4	93,589
Apr.....	95,069	49,616	288	12	272	4	94,781
May	96,290	50,941	288	12	272	4	96,003
June	97,692	52,004	289	12	273	4	97,403
July.....	98,974	53,371	289	12	273	4	98,685
Aug.....	(100,204)	(54,494)	(289)	(12)	(273)	(4)	(99,915)
	Other sectors						
	Other financial institutions	Insurance corporations and pension funds	Non-financial corporations	Households			
				Consumer households	Producer households	Non-profit institutions	
	S111236M	S136147M	S153928M	S742491M	S073607M	S183823M	
2008	388	..	26,058	9,143	5,566	138	
2009	480	2	38,663	12,830	6,871	292	
2010 - July.....	502	2	45,721	15,783	7,479	307	
Aug.....	492	2	46,432	16,113	7,567	308	
Sept.....	467	2	47,637	16,422	7,805	326	
Oct.	483	2	48,589	16,732	7,924	326	
Nov.	495	2	49,367	17,243	7,943	327	
Dec.....	494	2	50,849	17,539	8,340	339	
2011 - Jan.	642	2	59,213	21,427	9,140	379	
Feb.....	626	4	60,082	21,617	9,297	379	
Mar.	654	2	61,213	21,937	9,404	379	
Apr.....	639	3	62,056	22,213	9,491	379	
May	620	3	63,057	22,370	9,578	375	
June	642	3	63,915	22,816	9,650	376	
July.....	642	3	64,803	23,146	9,714	377	
Aug.....	(644)	(3)	(65,709)	(23,372)	(9,809)	(379)	

Money and Banking

Table 2.7
TSC20600

One-month percentage changes on an annual basis: fund-raising (percentages)

	Deposits					Debt securities issued
	Total	of which: net of central government				
		Overnight deposits	Deposits with agreed maturity	Deposits redeemable at notice	Repos	
	<i>S767761M</i>	<i>S777217M</i>	<i>S748587M</i>	<i>S762726M</i>	<i>S803617M</i>	<i>S799055M</i>
2009	5.1	1.0	-20.8	2.4	39.2	7.8
2010 - June	0.1	-3.9	-11.6	4.3	196.3	-5.1
July.....	1.8	7.5	7.4	4.3	-40.8	5.9
Aug.....	2.0	0.8	6.1	5.1	-2.0	9.1
Sept.....	-4.0	-15.3	10.8	5.0	69.0	6.6
Oct.	3.0	3.6	-2.3	5.1	-7.9	-1.7
Nov.....	4.4	-16.8	-3.2	5.1	235.2	0.8
Dec.....	2.6	-5.7	21.2	4.1	50.4	-4.4
2011 - Jan.	-3.7	-0.3	3.5	1.9	-28.8	4.1
Feb.....	7.9	8.6	20.4	2.5	11.5	-0.4
Mar.	-9.0	-2.1	-11.5	1.8	-51.1	21.0
Apr.....	2.6	-3.4	30.9	2.9	16.8	4.8
May	-5.7	-8.2	-9.9	3.2	-11.9	11.8
June	-4.5	2.4	-29.3	4.1	-4.2	2.0
July.....	12.9	10.5	24.9	3.2	30.1	8.2
Aug.....	(15.6)	(7.4)	(26.9)	(1.6)	(103.7)	(5.4)

Table 2.8
TSC20700

One-month percentage changes on an annual basis: loans and holding of securities¹ (percentages)

	Loans to General government and other sectors in Italy				Securities other than shares	
	Total	Up to 1 year	From 1 to 5 years	More than 5 years	One-month percentage changes	Memorandum item: 12-month percentage changes
	<i>S812248M</i>	<i>S782311M</i>	<i>S793601M</i>	<i>S788106M</i>	<i>S818174M</i>	<i>S470004M</i>
2009	10.2	5.1	22.4	10.7	11.2	29.7
2010 - June	4.3	5.8	1.6	4.3	-15.7	13.2
July	6.4	5.5	4.5	7.4	7.9	10.0
Aug.	8.7	21.3	-2.2	4.3	10.7	8.9
Sept.	11.7	26.4	-0.5	8.7	8.0	7.6
Oct.	-2.9	-13.1	-8.8	5.3	-14.2	5.9
Nov.	6.1	16.9	-0.9	1.6	30.1	8.4
Dec.	0.8	-3.4	-7.2	5.3	8.8	8.2
2011 - Jan.	7.3	18.5	10.2	0.4	-1.6	8.1
Feb.	5.0	6.1	0.0	5.4	-17.4	5.6
Mar.	-0.8	-6.3	-9.8	4.8	-17.5	2.9
Apr.	1.6	-4.2	-3.2	4.3	5.3	2.2
May	10.6	21.5	14.0	3.8	-0.7	-0.1
June	0.4	-8.2	4.3	5.2	-11.3	-0.1
July	2.4	2.9	-11.1	5.1	38.6	2.0
Aug.	(3.9)	(11.4)	(-11.0)	(2.9)	(61.5)	(5.3)

(1) The rates of change are not adjusted for the effect of loan sales and securitization.

Loans by branch of economic activity: residents of Italy

(end-of-period stocks in millions of euros)

Branches of economic activity		July 2011			August 2011		
		Producer households	Non financial corporations	Total	Producer households	Non financial corporations	Total
		61	12020	3902	61	12020	3902
Agriculture, forestry and fishing	A	26,123	17,007	43,129	(26,225)	(17,093)	(43,318)
Mining and quarrying	B	77	2,980	3,058	(77)	(3,000)	(3,077)
Manufacturing.....	C	9,618	234,138	243,756	(9,653)	(232,733)	(242,386)
Food, beverages and tobacco products.....	1000061	1,700	30,381	32,082	(1,690)	(30,301)	(31,991)
Textiles, clothing and leather products	1000062	1,396	24,755	26,151	(1,401)	(24,594)	(25,995)
Wood and wood products and furnishings	1000066	1,357	15,300	16,657	(1,367)	(15,248)	(16,615)
Paper, paper products and printing	1000063	387	11,039	11,426	(387)	(11,041)	(11,427)
Refined petroleum products, chemical products and pharmaceuticals	1000067	133	24,768	24,901	(130)	(24,669)	(24,800)
Rubber and plastic products	22	199	12,338	12,537	(198)	(12,379)	(12,577)
Basic metals, fabricated metal products and non-metallic mineral products	1000068	2,370	60,617	62,987	(2,387)	(59,916)	(62,302)
Electronics products, electrical and non-electrical equipment and apparatus	1000069	418	13,486	13,904	(416)	(13,403)	(13,819)
Machinery and equipment.....	28	376	23,277	23,652	(377)	(23,128)	(23,505)
Motor vehicles and other transport equipment.....	1000060	216	9,708	9,925	(212)	(9,562)	(9,774)
Other products of manufacturing.....	1000070	1,066	8,468	9,534	(1,087)	(8,493)	(9,580)
Electricity, gas, steam and air conditioning supply	D	70	31,464	31,534	(71)	(31,502)	(31,573)
Water supply, sewerage, waste management and remediation activities	E	178	10,913	11,092	(179)	(11,035)	(11,214)
Construction	F	12,195	161,795	173,991	(12,340)	(162,451)	(174,792)
Wholesale and retail trade, repair of motor vehicles and motorcycles	G	22,269	126,930	149,199	(22,518)	(127,860)	(150,378)
Transportation and storage.....	H	2,875	36,225	39,100	(2,899)	(36,064)	(38,963)
Accommodation and food service activities.....	I	6,088	33,789	39,877	(6,047)	(33,025)	(39,072)
Information and communication	J	569	18,849	19,418	(574)	(19,102)	(19,676)
Real estate activities.....	L	2,486	124,936	127,422	(2,475)	(124,715)	(127,190)
Professional, scientific and technical activities	M	6,308	43,417	49,725	(6,484)	(44,586)	(51,070)
Administrative and support service activities.....	N	1,271	20,650	21,921	(1,292)	(20,572)	(21,864)
All remaining activities	1000073	10,389	37,074	47,463	(10,365)	(36,839)	(47,204)
All branches	1004999	100,516	900,168	1,000,684	(101,198)	(900,579)	(1,001,777)

Bad debts by branch of economic activity: residents of Italy

(end-of-period stocks in millions of euros)

Branches of economic activity		July 2011			August 2011		
		Producer households	Non financial corporations	Total	Producer households	Non financial corporations	Total
		61	12020	3902	61	12020	3902
Agriculture, forestry and fishing	A	1,840	1,458	3,298	(1,863)	(1,477)	(3,340)
Mining and quarrying	B	16	146	162	(16)	(145)	(161)
Manufacturing.....	C	1,368	20,922	22,290	(1,373)	(21,079)	(22,452)
Food, beverages and tobacco products.....	1000061	248	2,460	2,708	(249)	(2,471)	(2,720)
Textiles, clothing and leather products	1000062	278	3,939	4,217	(279)	(3,965)	(4,244)
Wood and wood products and furnishings	1000066	186	1,594	1,779	(186)	(1,616)	(1,802)
Paper, paper products and printing	1000063	50	1,108	1,159	(50)	(1,135)	(1,186)
Refined petroleum products, chemical products and pharmaceuticals	1000067	17	538	554	(16)	(546)	(563)
Rubber and plastic products	22	28	970	997	(28)	(980)	(1,008)
Basic metals, fabricated metal products and non-metallic mineral products	1000068	317	4,442	4,759	(319)	(4,427)	(4,746)
Electronics products, electrical and non-electrical equipment and apparatus	1000069	60	1,612	1,672	(60)	(1,620)	(1,680)
Machinery and equipment.....	28	53	1,888	1,941	(53)	(1,929)	(1,982)
Motor vehicles and other transport equipment.....	1000060	29	1,313	1,342	(29)	(1,311)	(1,340)
Other products of manufacturing.....	1000070	104	1,059	1,162	(104)	(1,078)	(1,182)
Electricity, gas, steam and air conditioning supply	D	2	85	88	(2)	(87)	(90)
Water supply, sewerage, waste management and remediation activities	E	16	387	403	(16)	(401)	(417)
Construction	F	1,967	13,484	15,450	(1,985)	(13,790)	(15,775)
Wholesale and retail trade, repair of motor vehicles and motorcycles	G	2,333	11,364	13,697	(2,363)	(11,533)	(13,896)
Transportation and storage.....	H	363	1,850	2,213	(364)	(1,860)	(2,224)
Accommodation and food service activities.....	I	556	2,278	2,834	(564)	(2,334)	(2,898)
Information and communication	J	63	1,151	1,214	(64)	(1,205)	(1,270)
Real estate activities.....	L	196	6,525	6,720	(196)	(6,565)	(6,761)
Professional, scientific and technical activities	M	252	1,246	1,499	(259)	(1,276)	(1,536)
Administrative and support service activities.....	N	153	1,722	1,875	(155)	(1,748)	(1,903)
All remaining activities	1000073	589	2,184	2,773	(589)	(2,208)	(2,797)
All branches	1004999	9,714	64,803	74,517	(9,809)	(65,709)	(75,518)

Securities other than shares issued by residents of Italy

(end-of-period stocks in millions of euros)

	Italian government securities					Other securities			Total
	of which:				of which				
	BOTs	CCTs	BTPs	CTZs	Total	bonds issued by banks	repurchases of their own securitised assets not derecognised		
	<i>S470453M</i>	<i>S484406M</i>	<i>S495781M</i>	<i>S504610M</i>	<i>S519936M</i>	<i>S438918M</i>	<i>S275097M</i>	<i>S570744M</i>	<i>S420415M</i>
2008	108,270	4,361	47,196	37,206	13,141	229,029	153,538	-	337,299
2009	147,131	17,905	41,464	65,892	16,129	291,689	210,698	-	438,820
2010 - July	193,283	28,269	47,336	90,054	19,849	373,836	215,096	108,003	567,120
Aug.	189,440	24,804	47,097	89,647	19,950	373,553	216,356	106,476	562,993
Sept.....	190,128	24,686	47,607	94,776	17,144	377,579	216,066	111,627	567,707
Oct.	190,164	23,936	49,833	93,979	16,473	367,591	209,189	109,806	557,755
Nov.	195,234	25,692	49,710	96,301	17,219	368,682	206,323	116,846	563,917
Dec.	192,991	24,256	47,348	98,536	16,605	361,798	206,427	114,537	554,790
2011 - Jan.	197,153	23,362	48,124	100,388	18,476	359,213	205,535	113,194	556,367
Feb.	189,169	20,035	47,084	98,019	17,250	361,250	203,616	112,125	550,420
Mar.	183,241	17,972	46,271	97,975	14,276	361,847	210,529	108,117	545,089
Apr.	184,460	16,966	46,584	100,079	14,065	365,173	210,399	111,627	549,633
May	191,885	18,870	46,515	104,767	14,962	363,309	215,902	105,480	555,194
June	198,450	20,074	47,995	110,080	13,545	364,675	217,276	105,907	563,126
July	204,675	23,279	47,508	110,382	14,618	365,171	220,074	105,015	569,847
Aug.	(212,203)	(25,374)	(48,928)	(113,156)	(15,884)	(373,811)	(225,777)	(108,333)	(586,014)

Money and banks

Table 2.12
TSC21110

Securities of third parties held in deposit: debt securities at face value by sector of holder

(end-of-period stocks in millions of euros)

	Residents of Italy							Rest of the world	Total
	Non financial corporations	Financial institutions	Insurance corporations	General government	Households		Total residents		
					Consumer households	Producer households			
	<i>S614465M</i>	<i>S071499M</i>	<i>S090183M</i>	<i>S133795M</i>	<i>S165359M</i>	<i>S181843M</i>	<i>S195955M</i>	<i>S232657M</i>	<i>S248779M</i>
2008	79,379	317,392	264,394	12,886	699,435	36,492	1,409,978	42,877	1,452,855
2009	80,885	365,021	292,751	13,928	673,886	33,726	1,460,196	43,863	1,504,060
2010 - July.....	82,199	353,533	313,295	13,401	671,662	33,082	1,467,172	49,804	1,516,976
Aug.....	82,171	363,083	316,594	13,386	669,529	32,945	1,477,708	43,480	1,521,188
Sept.....	81,955	370,040	318,490	13,394	670,074	33,819	1,487,771	46,906	1,534,677
Oct.	81,687	360,203	317,777	13,544	671,207	33,766	1,478,184	53,005	1,531,188
Nov.....	81,755	359,660	318,717	13,573	677,195	32,898	1,483,798	54,492	1,538,290
Dec.....	83,390	351,556	316,933	13,004	676,868	34,100	1,475,850	60,468	1,536,318
2011 - Jan.	83,519	356,003	320,944	12,931	683,008	33,566	1,489,971	53,340	1,543,311
Feb.....	83,983	358,894	324,987	13,126	687,993	34,217	1,503,200	56,517	1,559,717
Mar.....	84,366	350,772	325,820	13,270	700,233	34,649	1,509,110	56,961	1,566,071
Apr.....	86,588	351,531	326,765	13,305	706,784	35,002	1,519,975	52,595	1,572,570
May	86,814	350,632	327,044	13,213	711,921	35,078	1,524,701	51,814	1,576,516
June	86,875	339,255	326,185	13,145	711,721	35,007	1,512,189	56,845	1,569,034
July.....	87,278	339,129	328,474	14,047	717,235	34,962	1,521,125	50,333	1,571,458
Aug.....	(86,831)	(339,456)	(329,182)	(13,854)	(714,450)	(34,834)	(1,518,607)	(49,132)	(1,567,739)

Table 2.13
TSC21210

Securities of third parties held in deposit at fair value by instrument

(end-of-period stocks in millions of euros)

	Debt securities at fair value						Shares and other equity at fair value		
	of which:						of which:		
	Total	Government securities	of which: BOTS	of which: CCTs	of which: BTPs	Bank bonds	Total	Shares	Mutual funds shares
	S259771Q	S271712Q	S282091Q	S299994Q	S317378Q	S337122Q	S350588Q	S366382Q	S3382767Q
2008 -4th qtr.	1,418,805	569,695	115,888	114,909	303,183	325,450	695,852	392,850	303,002
2009 -1st qtr.	1,389,862	552,731	100,680	108,275	307,099	346,175	496,483	255,731	240,752
2nd "	1,401,480	545,393	89,274	107,897	311,715	360,658	522,498	279,887	242,611
3rd "	1,441,314	552,987	73,116	101,817	335,918	367,140	587,978	324,959	263,019
4th "	1,492,302	557,810	59,996	104,907	348,401	364,620	607,213	333,522	273,692
2010 -1st qtr.	1,503,398	550,527	56,638	96,683	351,077	363,302	623,627	335,052	288,575
2nd "	1,485,981	562,961	58,775	90,488	366,399	356,564	610,758	298,866	311,892
3rd "	1,490,334	588,843	56,918	96,380	389,429	354,522	625,688	309,421	316,267
4th "	1,475,443	583,691	51,207	93,104	383,676	347,738	619,481	303,905	315,577
2011 -1st..... qtr.	1,486,019	589,022	57,524	94,680	391,931	351,727	637,378	312,373	325,005
2nd "	1,484,571	591,281	58,919	88,367	403,262	358,183	641,059	308,176	332,884

Securitized loans, originated by banks resident in Italy, by type and borrowing sector: total*(end-of-period stocks in millions of euros)*

	Total securitized loans (including loans non derecognised from the balance sheets)								
	Total		Other residents of Italy						
		of which: bad debts		Insurance corporations, pension funds and other financial institutions	Non financial corporations		Households		
							Consumer credit	Lending for house purchase	Other lending
	S566523M	S571825M	S581652M	S594014M	S599608M	S611448M	S618267M	S625906M	S630780M
2010	195,389	30,814	194,809	4,932	38,301	151,577	7,979	120,827	22,770
2010 -Sept.	196,928	31,150	196,298	5,138	35,056	156,104	7,553	124,850	23,701
Oct.	194,938	31,062	194,309	5,139	34,758	154,412	8,148	123,436	22,829
Nov.	194,585	30,881	193,955	5,131	34,450	154,373	8,246	123,065	23,062
Dec.	195,389	30,814	194,809	4,932	38,301	151,577	7,979	120,827	22,770
2011 - Jan.	194,049	30,902	193,479	4,919	38,183	150,378	7,951	119,792	22,634
Feb.	190,595	30,765	190,032	4,927	38,729	146,376	7,705	116,992	21,679
Mar.	188,488	30,858	187,928	4,916	38,504	144,508	7,588	115,448	21,472
Apr.	186,872	30,754	186,322	4,861	37,860	143,601	7,500	114,707	21,394
May	181,393	30,641	180,842	4,850	37,413	138,580	7,273	110,542	20,764
June	180,662	30,583	180,135	4,809	36,908	138,417	7,138	110,295	20,984
July	181,161	30,766	180,646	4,784	36,512	139,350	9,455	109,089	20,806
Aug.	(180,282)	(30,524)	(179,991)	(4,773)	(36,319)	(138,899)	(10,168)	(108,085)	(20,646)

Tavola 2.15

TSC21500

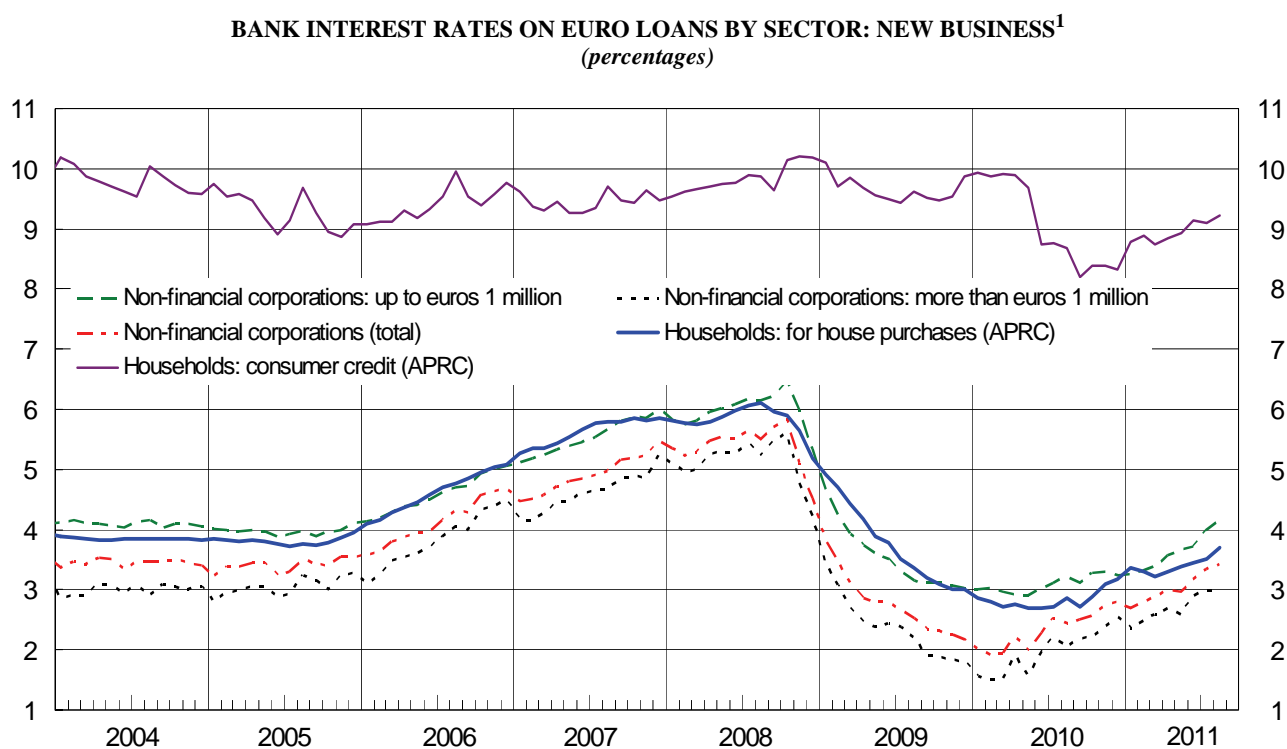
Securitized loans, originated by banks resident in Italy, by type and borrowing sector:**loans derecognised from the balance sheets***(end-of-period stocks in millions of euros)*

	Securitized loans derecognized from the balance sheets								
	Total		Other residents of Italy						
		of which: bad debts		Insurance corporations, pension funds and other financial institutions	Non financial corporations		Households		
							Consumer credit	Lending for house purchase	Other lending
	S067269M	S493705M	S510823M	S522003M	S535618M	S541843M	S547389M	S552707M	S558828M
2010	45,368	29,201	45,040	4,789	24,959	15,292	726	4,025	10,541
2010 -Sept.	45,136	29,762	44,771	4,997	24,054	15,719	737	4,225	10,758
Oct.	44,857	29,591	44,492	4,997	23,901	15,593	773	4,156	10,665
Nov.	44,348	29,332	43,983	4,997	23,574	15,412	751	4,139	10,522
Dec.	45,368	29,201	45,040	4,789	24,959	15,292	726	4,025	10,541
2011 - Jan.	45,435	29,200	45,114	4,787	25,083	15,244	774	3,977	10,492
Feb.	44,983	29,022	44,665	4,783	24,984	14,899	748	3,929	10,221
Mar.	44,407	29,060	44,092	4,774	24,961	14,356	723	3,444	10,189
Apr.	44,240	28,942	43,933	4,720	24,829	14,384	764	3,413	10,208
May	44,242	28,906	43,935	4,718	24,931	14,286	738	3,363	10,185
June	43,905	28,770	43,613	4,635	24,727	14,250	712	3,386	10,152
July	43,047	28,801	42,758	4,635	24,666	13,458	29	3,305	10,124
Aug.	(42,590)	(28,498)	(42,525)	(4,626)	(24,657)	(13,242)	(28)	(3,162)	(10,052)

Section 3

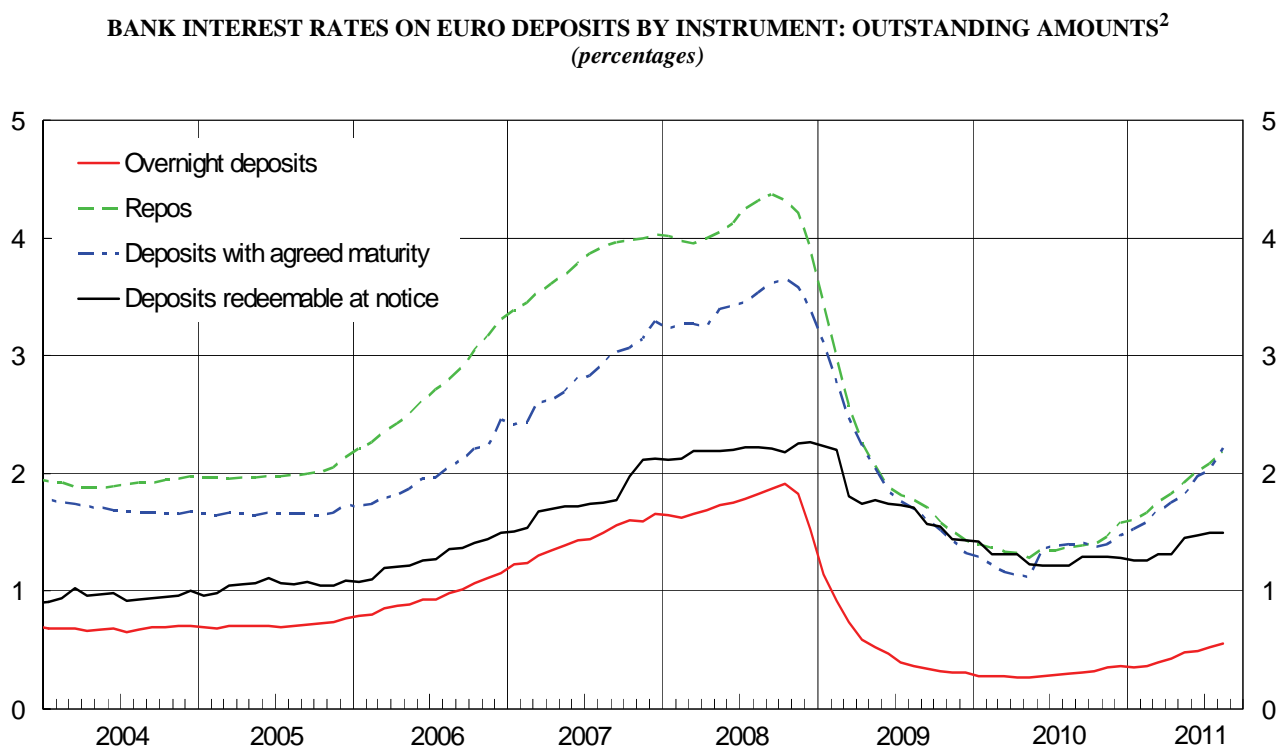
**Banks:
interest rates**

Figure 3.1



(1) See Methodological appendix.

Figure 3.2



(2) See Methodological appendix.

Bank interest rates on euro loans to non-financial corporations: new business

(percentages)

	Total	Loans up to 1 million euros						
		Total	of which: up to 250,000 euros	Memorandum item: for other purposes to producer households	Initial period of rate fixation			
					up to 3 months	over 3 months and up to 1 year	over 1 year and up to 5 years	over 5 years
	<i>S127845M</i>	<i>S148553M</i>	<i>S207961M</i>	<i>S588953M</i>	<i>S598463M</i>	<i>S604503M</i>	<i>S181533M</i>	<i>S201914M</i>
2008	4.52	5.34	6.06	5.59
2009	2.17	3.03	4.37	5.18
2010 - Aug.	2.45	3.23	3.62	3.77	3.11	3.38	4.68	4.72
Sept.	2.51	3.12	3.50	3.57	3.04	3.20	4.20	4.45
Oct.	2.58	3.28	3.64	3.68	3.18	3.41	4.32	4.42
Nov.	2.73	3.31	3.67	3.80	3.23	3.38	4.39	4.66
Dec.	2.79	3.24	3.57	3.72	3.16	3.24	4.48	4.88
2011 - Jan.	2.69	3.26	3.59	3.89	3.15	3.35	4.64	5.01
Feb.	2.79	3.32	3.65	3.92	3.26	3.32	4.82	5.15
Mar.	2.88	3.38	3.69	4.11	3.31	3.38	4.79	5.31
Apr.	3.01	3.57	3.87	4.26	3.47	3.64	5.06	5.45
May	2.96	3.65	3.96	4.48	3.59	3.66	5.19	5.52
June	3.18	3.71	4.05	4.56	3.65	3.73	5.10	5.52
July	3.34	3.99	4.32	4.78	3.90	4.06	5.14	5.43
Aug.	(3.42)	(4.15)	(4.47)	(5.08)	(4.08)	(4.23)	(5.06)	(5.52)

	Loans over 1 million euros					Loans with collateral and/or guarantees		
	Total	Initial period of rate fixation				Total	up to 1 million euros	over 1 million euros
		up to 3 months	over 3 months and up to 1 year	over 1 year and up to 5 years	over 5 years			
	<i>S212623M</i>	<i>S610487M</i>	<i>S615735M</i>	<i>S242176M</i>	<i>S254346M</i>	<i>S625012M</i>	<i>S632871M</i>	<i>S637692M</i>
2008	4.19	4.63	4.74
2009	1.82	2.25	3.57
2010 - Aug.	2.04	2.00	2.18	1.50	3.81	3.12	3.61	2.36
Sept.	2.20	2.25	2.06	1.37	3.26	2.86	3.47	2.21
Oct.	2.21	2.18	2.18	2.57	3.46	3.06	3.57	2.51
Nov.	2.39	2.44	1.99	1.60	4.49	3.20	3.59	2.69
Dec.	2.56	2.55	2.59	2.33	3.94	3.21	3.53	2.84
2011 - Jan.	2.35	2.25	2.84	1.84	3.38	3.33	3.67	2.87
Feb.	2.49	2.46	2.82	1.92	4.20	3.32	3.73	2.74
Mar.	2.59	2.54	2.92	1.59	3.88	3.42	3.76	2.88
Apr.	2.69	2.62	2.88	4.21	4.02	3.49	3.92	3.03
May	2.59	2.54	2.89	1.98	4.31	3.61	4.02	3.06
June	2.91	2.84	3.16	2.98	3.91	3.71	4.12	3.21
July	2.98	2.85	3.36	2.66	4.42	4.00	4.42	3.50
Aug.	(3.00)	(2.99)	(3.06)	(2.83)	(5.18)	(4.26)	(4.70)	(3.55)

Bank interest rates on euro loans to households: new business

(percentages)

	Loans for house purchases					
	Total	Initial period of rate fixation				APRC
		up to 1 year	over 1 year and up to 5 years	over 5 years and up to 10 years	over 10 years	
	<i>S921397M</i>	<i>S931765M</i>	<i>S944970M</i>	<i>S963373M</i>	<i>S976256M</i>	<i>S103279M</i>
2008	5.09	4.91	4.98	5.08	5.21	5.19
2009	2.88	2.24	3.35	4.05	4.92	3.01
2010 - Aug.	2.66	2.44	3.16	4.24	4.49	2.86
Sept.	2.64	2.39	3.14	3.66	4.09	2.73
Oct.	2.70	2.44	3.12	3.57	4.10	2.89
Nov.	2.88	2.52	3.32	3.85	4.20	3.09
Dec.	2.97	2.52	3.48	4.01	4.30	3.18
2011 - Jan.	3.15	2.58	3.58	4.04	4.22	3.36
Feb.	3.08	2.59	3.67	4.18	4.37	3.30
Mar.	2.99	2.61	3.81	4.34	4.74	3.23
Apr.	3.04	2.68	3.84	4.43	4.85	3.29
May	3.09	2.77	3.99	4.51	4.84	3.38
June	3.16	2.85	3.95	4.36	4.82	3.44
July	3.21	2.92	3.96	4.21	4.78	3.51
Aug.	(3.43)	(3.14)	(3.89)	(4.35)	(4.89)	(3.70)

	Consumer credit					Loans for other purposes			
	Total	Initial period of rate fixation			APRC	Total	of which: producer households	Initial period of rate fixation	
		up to 1 year	over 1 year and up to 5 years	over 5 years				up to 1 year	over 1 year
	<i>S984694M</i>	<i>S006081M</i>	<i>S032609M</i>	<i>S054671M</i>	<i>S118160M</i>	<i>S964935M</i>	<i>S588953M</i>	<i>S062897M</i>	<i>S643432M</i>
2008	9.29	11.42	8.64	8.15	10.19	6.06	6.18	5.73
2009	8.33	9.86	8.28	6.96	9.87	4.15	4.01	5.13
2010 - Aug.	7.05	7.23	6.85	7.04	8.67	4.29	3.77	4.25	4.65
Sept.	7.11	7.06	6.83	7.33	8.20	3.94	3.57	3.86	4.63
Oct.	7.03	6.75	7.05	7.24	8.39	3.97	3.68	3.88	4.61
Nov.	7.06	6.82	6.97	7.30	8.39	4.44	3.80	4.39	4.86
Dec.	6.71	6.63	6.65	6.81	8.33	4.18	3.72	4.06	4.98
2011 - Jan.	7.24	7.22	6.99	7.39	8.78	4.54	3.89	4.47	5.21
Feb.	7.46	7.32	7.31	7.66	8.88	4.58	3.92	4.49	5.36
Mar.	7.42	7.24	7.38	7.58	8.74	4.63	4.11	4.54	5.39
Apr.	7.56	7.35	7.47	7.77	8.84	4.50	4.26	4.39	5.51
May	7.63	7.39	7.50	7.89	8.92	4.84	4.48	4.75	5.50
June	7.71	7.55	7.60	7.92	9.14	4.95	4.56	4.88	5.54
July	7.74	7.43	7.58	8.06	9.11	4.87	4.78	4.79	5.49
Aug.	(7.83)	(7.74)	(7.55)	(8.04)	(9.23)	(5.05)	(5.08)	(5.00)	(5.57)

Bank interest rates on euro loans to households and non-financial corporations: outstanding amounts
(percentages)

	Households									
	Total	Loans for house purchases			Consumer credit and other loans			Revolving loans and overdrafts	Extended credit card debt	
		of which:		up to 1 year	over 1 year and up to 5 years	over 5 years				
		over 1 year and up to 5 years	over 5 years							
	<i>S681824M</i>	<i>S711581M</i>	<i>S741096M</i>	<i>S750813M</i>	<i>S761710M</i>	<i>S781559M</i>	<i>S790439M</i>	<i>S665496M</i>	<i>S966166M</i>	
2008	6.45	5.63	5.76	5.62	8.59	8.21	6.69	
2009	4.69	3.76	4.16	3.76	6.56	7.52	5.04	
2010 - Aug.	4.37	3.55	3.96	3.55	6.88	6.25	4.85	6.25	15.88	
Sept.	4.35	3.54	3.99	3.53	6.87	6.21	4.84	6.29	15.83	
Oct.	4.34	3.53	3.96	3.52	6.87	6.20	4.82	6.35	15.83	
Nov.	4.35	3.55	4.20	3.54	6.75	6.20	4.82	6.29	15.82	
Dec.	4.31	3.53	4.14	3.53	6.61	6.15	4.80	6.17	15.79	
2011 - Jan.	4.34	3.54	4.15	3.53	6.74	6.12	4.81	6.28	15.80	
Feb.	4.33	3.52	4.12	3.52	6.76	6.10	4.81	6.27	15.79	
Mar.	4.32	3.52	4.09	3.52	6.73	6.09	4.81	6.24	15.76	
Apr.	4.36	3.56	4.09	3.56	6.84	6.11	4.85	6.44	15.74	
May	4.41	3.61	4.09	3.61	6.85	6.13	4.89	6.48	15.73	
June	4.43	3.64	4.08	3.63	6.86	6.16	4.91	6.50	15.71	
July	4.50	3.72	4.14	3.71	6.93	6.22	5.00	6.60	15.76	
Aug.	(4.54)	(3.75)	(4.12)	(3.75)	(6.97)	(6.23)	(5.02)	(6.69)	(15.77)	
	Non-financial corporations					Households and non-financial corporations				
	Loans with original maturity:				Revolving loans and overdrafts	up to 1 year	of which: revolving loans and overdrafts			
	up to 1 year	over 1 year and up to 5 years	over 5 years							
	<i>S826547M</i>	<i>S845839M</i>	<i>S856925M</i>	<i>S866863M</i>	<i>S972742M</i>	<i>S889541M</i>	<i>S982988M</i>			
2008	5.89	6.35	5.33	5.71	6.65			
2009	3.21	3.81	2.79	2.89	4.21			
2010 - Aug.	3.06	3.46	2.83	2.83	4.06	3.96	4.43			
Sept.	3.10	3.50	2.88	2.86	4.13	3.98	4.49			
Oct.	3.11	3.49	2.91	2.88	4.13	3.99	4.51			
Nov.	3.16	3.58	2.95	2.90	4.16	4.04	4.52			
Dec.	3.15	3.52	2.99	2.91	4.09	3.97	4.44			
2011 - Jan.	3.22	3.63	2.99	2.97	4.25	4.07	4.60			
Feb.	3.24	3.68	2.96	2.97	4.29	4.11	4.62			
Mar.	3.25	3.66	3.00	3.00	4.23	4.10	4.58			
Apr.	3.35	3.80	3.14	3.06	4.33	4.24	4.70			
May	3.42	3.90	3.20	3.11	4.47	4.33	4.81			
June	3.51	3.98	3.33	3.18	4.53	4.39	4.86			
July	3.68	4.18	3.44	3.36	4.58	4.56	4.92			
Aug.	(3.75)	(4.32)	(3.46)	(3.38)	(4.72)	(4.70)	(5.06)			

Bank interest rates on euro deposits from households and non-financial corporations: new business

(percentages)

	Deposits with agreed maturity					Repos
		Households			Non-financial corporations	
		up to 1 year	over 1 year			
	<i>S050309M</i>	<i>S634356M</i>	<i>S654771M</i>	<i>S070248M</i>	<i>S077154M</i>	<i>S664243M</i>
2008	3.05	3.01	3.01	3.03	3.10	3.19
2009	0.86	1.02	1.01	1.12	0.73	1.18
2010 - Aug.....	0.71	1.38	1.40	1.05	0.41	1.21
Sept.....	0.80	1.38	1.39	1.12	0.58	1.24
Oct.	0.96	1.25	1.25	1.16	0.79	1.37
Nov.....	1.27	1.27	1.28	1.20	1.27	1.36
Dec.....	1.32	1.39	1.40	1.26	1.27	1.57
2011 - Jan.	1.39	1.50	1.50	1.43	1.27	1.41
Feb.....	1.60	1.64	1.61	1.99	1.56	1.55
Mar.	1.70	1.70	1.66	2.12	1.70	1.77
Apr.....	1.90	1.80	1.67	2.47	2.00	1.77
May	1.93	1.78	1.73	2.12	2.07	1.88
June	2.18	2.01	1.99	2.21	2.31	2.04
July.....	2.15	2.08	2.06	2.25	2.22	2.04
Aug.....	(2.43)	(2.41)	(2.41)	(2.47)	(2.45)	(2.22)

Bank interest rates on euro deposits from households and non-financial corporations: outstanding amounts

(percentages)

	Deposits	Total deposits (excluding repos)		Overnight deposits	Deposits with agreed maturity	Deposits of households redeemable at notice	Repos
		Households	Non-financial corporations				
	<i>S993623M</i>	<i>S081659M</i>	<i>S090430M</i>	<i>S525995M</i>	<i>S096275M</i>	<i>S101288M</i>	<i>S616764M</i>
2008	1.99	1.64	2.53	1.53	3.40	2.26	3.90
2009	0.68	0.69	0.48	0.31	1.33	1.43	1.43
2010 - Aug.....	0.63	0.62	0.53	0.30	1.40	1.21	1.38
Sept.....	0.65	0.65	0.55	0.31	1.41	1.29	1.38
Oct.	0.66	0.64	0.57	0.32	1.38	1.29	1.40
Nov.	0.69	0.66	0.66	0.35	1.40	1.29	1.47
Dec.....	0.69	0.66	0.67	0.36	1.47	1.28	1.58
2011 - Jan.	0.69	0.66	0.67	0.35	1.53	1.26	1.60
Feb.....	0.71	0.67	0.72	0.37	1.59	1.26	1.67
Mar.	0.75	0.70	0.81	0.40	1.68	1.31	1.75
Apr.....	0.78	0.71	0.87	0.43	1.75	1.31	1.82
May	0.86	0.78	0.99	0.48	1.81	1.45	1.92
June	0.88	0.80	1.03	0.50	1.98	1.47	2.02
July.....	0.91	0.83	1.06	0.53	2.03	1.50	2.08
Aug.....	(0.95)	(0.85)	(1.15)	(0.55)	(2.21)	(1.49)	(2.18)

	Overnight deposits		Deposits with agreed maturity		
	Households	Non-financial corporations	Households		Non-financial corporations
			up to 2 years	over 2 years	
	<i>S542604M</i>	<i>S108594M</i>	<i>S560715M</i>	<i>S590902M</i>	<i>S118607M</i>
2008	1.23	2.44	3.21	2.93	3.90
2009	0.26	0.44	1.37	2.85	1.08
2010 - Aug.....	0.25	0.49	1.42	2.78	1.21
Sept.....	0.25	0.51	1.44	2.77	1.22
Oct.	0.26	0.53	1.38	2.75	1.30
Nov.	0.27	0.60	1.40	2.77	1.33
Dec.....	0.28	0.62	1.49	2.78	1.36
2011 - Jan.	0.28	0.61	1.52	2.78	1.50
Feb.....	0.29	0.66	1.56	2.81	1.61
Mar.	0.30	0.72	1.60	2.84	1.83
Apr.....	0.32	0.78	1.63	2.86	2.00
May	0.35	0.90	1.68	2.83	2.10
June	0.36	0.93	1.86	2.86	2.30
July.....	0.39	0.96	1.91	2.86	2.37
Aug.....	(0.40)	(1.03)	(2.11)	(2.85)	(2.50)

Other bank and interbank interest rates
(percentages)

	Bank interest rates			Interbank interest rates			
	Minimum for loans up to 1 year (stocks)	Bonds		Overnight	1 month	3 months	6 months
		Average for stocks	Average for issues with initial period of rate fixation of more than 1 year				
	S099013M	S328906M	S492173M	S367355M	S058923M	S700980M	S463758M
2008	3.99	4.49	4.36	2.45	3.12	3.38	3.66
2009	0.99	2.91	2.98	0.29	0.51	0.69	1.03
2010 - Aug.	0.99	2.73	2.92	0.36	0.86	1.02	-
Sept.....	1.03	2.74	2.73	0.46	0.79	0.98	1.89
Oct.	1.06	2.76	4.12	0.67	1.15	1.18	-
Nov.	1.15	2.87	3.34	0.57	1.14	1.75	-
Dec.	1.17	2.91	2.52	0.50	1.26	1.84	2.25
2011 - Jan.	1.13	2.95	3.73	0.64	1.31	1.53	-
Feb.	1.16	3.00	3.78	0.70	1.36	2.10	-
Mar.	1.21	3.06	3.81	0.58	1.40	2.26	-
Apr.	1.35	3.11	3.94	0.92	1.62	1.96	-
May	1.53	3.17	3.62	0.96	1.78	2.47	-
June	1.59	3.21	3.72	1.12	1.87	2.76	-
July	1.69	3.23	3.20	1.07	2.13	2.43	-
Aug.	(1.79)	(3.27)	(3.66)	0.92	2.19	2.99	3.25

METHODOLOGICAL APPENDIX

GENERAL INDICATIONS

FIRST SECTION. SINGLE MONETARY POLICY STATISTICS: THE ITALIAN COMPONENTS

1.1. Introduction

The statistics describe the Italian components of the single monetary policy of the euro area. They refer to Monetary Financial Institutions (MFIs), which make up the money-issuing sector in the area. In Italy the sector includes: the Bank of Italy; banks; money market funds; electronic money institutions; and, as of September 2006, Cassa Depositi e Prestiti s.p.a. The term "other MFIs" is used for MFIs other than central banks. Money market funds (MMFs) issue units that can replace deposits in terms of liquidity and invest in transferable debt instruments with a residual life equal to or less than a year. The website of the European Central Bank contains a list, updated monthly, of the MFIs of the monetary union.

The "money-holding sector" comprises euro-area residents that are not MFIs or central government: "other general government" (local authorities and social security funds) and "other residents" (other financial institutions, including non-money market funds; insurance companies and pension funds; non-financial corporations; households; non-profit institutions serving households).

Since September 2006 Cassa Depositi e Prestiti s.p.a. has been subject to the Eurosystem's minimum reserve regime; since October 2007 the statistics have included the balance sheet data of Cassa Depositi e Prestiti s.p.a. The stock series have been affected by the reclassification of this company from "other financial institutions" to "other MFIs". Flows and growth rates are given net of the change.

For the definition of the statistics, reference can be made to ECB Regulation 2001/13 as amended and to ECB Regulation 2008/32.

The statistics cover monthly and annual end-of-period stocks and flows. For the items obtained from MFIs' balance sheets, the flows are adjusted for fluctuations in prices and exchange rates and other factors, such as the manner of accounting for loan losses and changes in the reporting population. The adjustment for fluctuations in exchange rates is applied to instruments denominated in dollars, yen, Swiss francs and pounds sterling.

Long series on the Italian monetary aggregates, the official discount rate, the official reference rate and other information are available on the Bank of Italy's website in the section: Statistics/Historical statistics/Historical data in the BIP on-line/Historical tables".

1.2. Content of the figures and tables

Figure 1.1 shows the twelve-month rates of change in the Italian contribution to the euro-area monetary aggregates. The rates of change are calculated from the differences in the stocks (delta stock), adjusted to take account of reclassifications, revaluations, changes in exchange rates and every other variation that does not originate from economic transactions. Statistical reclassifications, for example, are changes in the reporting population or the reassignment of balance sheet items; value adjustments, for example, are devaluations of loans and securities. The rates of growth of the Italian contributions to money are published excluding currency in circulation since, with the introduction of the euro, the quantity of notes and coin held in each country can no longer be measured directly.

Table 1.1 shows the consolidated balance sheet of the MFIs resident in Italy.

Tables 1.2a and 1.2b (stocks and flows) show the details of the Italian components of the monetary aggregates of the euro area. Tables 1.3a and 1.3b (stocks and flows) show the details of the counterparts. The Italian components of the monetary aggregates of the euro area refer to the liabilities of the MFIs resident in Italy and the postal funds raised from the "money-holding sector" of the euro area. The counterparts include central government. Since January 2002 a convention has been adopted for the measurement of currency in circulation (notes and coin held by the public). Under the convention each euro-area country is assigned a share of the euro banknotes proportional to the share of the ECB's capital paid up by its national central bank (the so-called Capital Share Mechanism). The euro-area countries' shares of the ECB's capital are equal to the average of each country's percentage of the total population and its percentage of total GDP. This criterion for dividing currency in circulation is based on evidence showing that the demand for banknotes is influenced to a considerable extent by the size of the population and the level of GDP. Since January 2003 currency in circulation excludes the residual amount denominated in lire; the other NCBs have taken the same decision for their own national currencies. The construction of the statistics on counterparts reflects the changes made to the monetary aggregates. In the items which show the Italian contribution to the money of the area, currency in circulation is excluded. Starting with the data for October 2007 M2 includes fixed-term and indexed postal savings certificates, which had previously been excluded from the monetary aggregates. As of the same date the series of the stocks of the monetary components and their counterparts have been affected by the reclassification of Cassa Depositi e Prestiti s.p.a. from "other financial institutions" to "other MFIs". Flows are given net of the change.

Tables 1.4a and 1.4b show the balance sheet of the Bank of Italy in accordance with the accounting layout adopted by the Eurosystem. Since 1 January 2008 the assets and liabilities of the Italian Foreign Exchange Office (UIC) have been included in the Bank's balance sheet. The flow series have been adjusted for the effects of this change. Table 1.5 shows the interest rates fixed by the Eurosystem. Table 1.6 contains data on the open-market operations carried out by the Bank of Italy on behalf of the Eurosystem. Tables 1.7a and 1.7b show the aggregates subject to the reserve requirement, the reserve maintenance and the rate of return of the reserve. Table 1.8 shows the liquidity position of the Italian banking system and the contribution to the monetary base of the area.

Tables 1.9a and 1.9b show the balance sheet of the "other MFIs" resident in Italy, i.e. the MFIs other than the Bank of Italy.

SECOND SECTION. BANKS: BALANCE SHEET AND OTHER INFORMATION

2.1 Introduction

The statistics refer to all the banks resident in Italy and, as of October 2007, to Cassa Depositi e Prestiti s.p.a. The statistics are distinguished in the section on the basis of the residence of the counterpart of the operations: residents in Italy, other euro-area countries and the rest of the world.

Tables 2.1-2.5 and tables 2.14-2.15 contain statistics harmonized according to the ESCB standards. For more details in this respect, see the document "L'armonizzazione delle statistiche bancarie europee e i riflessi sull'Italia", Banca d'Italia, Supplementi al Bollettino Statistico - Note metodologiche e informazioni statistiche, February 2000. Banks have been producing statistics harmonized at European level since June 1998. For the period from December 1995 to May 1998 the information is partially estimated on the basis of data available in automated prudential returns and foreign exchange reports.

The statistics shown in Tables 2.6-2.13 are not harmonized at European level.

2.2 Definition of the items

The balance sheet items refer to end-of-period stocks.

In addition to performing loans, the item "loans" contains bad debts and assets in the form of repos.

Listed securities belonging to the portfolio not held as financial fixed assets are reported at the fair value of the last trading day of the month the report refers to; other securities are reported at book value. The item "securities other than shares" includes unlisted debt securities, debt securities held to maturity and own debt securities issued and bought back.

"Equity holdings" are stated gross of the corresponding provisions for diminution in value.

The item "fixed assets" refers to movables, buildings, fixed assets to be leased and intangible fixed assets.

"Deposits" comprise overnight deposits, deposits with agreed maturity and redeemable at notice, and liabilities in the form of repos. Overnight deposits include banker's drafts but do not include tied accounts. Deposits with agreed maturity include certificates of deposit, tied accounts and tied savings deposits; they also include the issue of subordinated loans. Deposits redeemable at notice include free savings deposits and, as of the data for October 2007, the various forms of postal deposit of Cassa Depositi e Prestiti.

"Debt securities issued" are recorded at face value; they include own debt securities issued and bought back and the issue of subordinated liabilities. From December 2000 onwards the series includes reverse convertibles among the securities issued with maturity up to two years.

The item "capital and reserves" comprises share capital, reserves and the balance of prior year surpluses and losses. Since June 2010, this item includes loan loss provisions previously itemized in the remaining liabilities.

The items "other assets" and "other liabilities" include the premiums on options and variation margins in respect of financial derivatives. Normally, the latter are considered as off-balance-sheet positions and not as items included among the assets of the banking system.

2.3 Content of the figures and tables

Figures 2.1 and 2.2 show the twelve-month rates of change of bank loans by sector and of bank fund raising. The figures refer to the business of banks resident in Italy with counterparties resident in Italy. The private sector includes households, non-profit institutions, non-financial corporations, insurance corporations, pension funds and the other financial institutions. The rates of change are calculated from the differences in the stocks (delta stock), adjusted to take account of reclassifications, revaluations, changes in exchange rates and every other variation that does not originate from an economic transaction. Statistical reclassifications include, for example, changes in the reporting population and the reassignment of balance sheet items; value adjustments include, for example, writedowns of loans. The time series on the rate of change of bank loans are calculated including loans not stated in banks' balance sheets because securitized or otherwise sold; this component is partially estimated up to May 2010. Only for total loans to the private sector, Figure 2.1 shows two time series of the rate of change: the first is not adjusted (i.e. it does not include loans not stated in banks' balance sheets because securitized or otherwise sold, and includes transactions concluded with central counterparties); the second is adjusted, i.e. includes loans not stated in banks' balance sheets because securitized or otherwise sold, and excludes transactions concluded with central counterparties. The time series on total deposits' change rate is calculated excluding transactions concluded with central counterparties and excluding deposits related to securitizations and loan sales (namely, those liabilities that are "Counterparts of loans and/or other assets" disposed of in a securitization but still recognized on the statistical balance sheet, by convention, among deposits with agreed maturity over two years, as specified in Regulation ECB/2008/32; and those liabilities related to bonds connected with their own securitization not derecognized). In November 2008 the figures for loans with maturity up to one year and overnight deposits were influenced by the postponement to 1 December of the payment of the second payment on account of self-assessed taxes due to the fact that the deadline of 30 November fell on a Sunday. If this had not been the case, the rate of growth in loans would have been higher and that of deposits lower.

Tables 2.1a and 2.1b summarize the main asset and liability items of the balance sheet.

Table 2.2 provides details of the euro fund-raising of the money-holding sector. The difference between Table 2.2 and Table 2.1 is that the latter shows fund-raising in all currencies.

Table 2.3 disaggregates total deposits (current accounts, time deposits, deposits repayable with notice, and customer repos), denominated in all currencies, by customer sector. It excludes the deposits of MFIs and general government, which are given in Table 2.1b. The statistics follow the sectoral breakdown of ESA95. For the definition of the institutional sectors, see the glossary to the appendix of the Annual Report (in Italian).

Table 2.4 shows loans broken down according to the sector the borrower belong to. In October 2008 deposits of banks resident in Italy (Table 2.1b) and loans to banks resident in Italy (Tables 2.1a and 2.4) were affected by the operations of reorganization carried out between banks belonging to the same group. These operations almost entirely explain the changes with

respect to the previous month. In November 2010, the time series of outstanding amounts of deposits, interbank loans with counterparties in Italy, and the time series "capital and reserve" and "shares and other equity issued by MFIs resident in Italy" show some discontinuities due to the effects of the reorganization of major banking groups; such transactions almost entirely explain the changes compared to previous months.

Table 2.5 shows loans to households according to their type and maturity and those to non-financial corporations according to their maturity. Non-profit institutions are included among households.

Table 2.6 shows bad debts according to the sector debtors resident in Italy belong to. The estimated realizable value of banks' bad debts is shown net of writeoffs of bad debts from loans. In January 2011, the outstanding amounts of both bad debts and the corresponding estimated realizable values were influenced by statistical breaks due to corporate operations carried out by some banking groups. These operations almost entirely explain the changes with respect to the previous month. The entry into force of the new supervisory returns as of December 2008 caused a break in the statistical series of the estimated realizable value of banks' bad debts. The new series are provided starting from December 2008.

Tables 2.7 and 2.8 show the one-month rates of growth in banks' fund-raising, loans by maturity and securities portfolio. The technical forms of deposits are net of central government deposits and deposits related to operations of loan sales. The one-month rates of growth are calculated net of the changes due to reclassifications, revaluations, changes in exchange rates and every other variation that does not originate from economic transactions. The rates of change of loans are not adjusted to take account of loan sales or securitizations. The one-month percentage changes are expressed on an annual basis and calculated on seasonally-adjusted data where appropriate. For a description of the seasonal-adjustment procedure and the criteria underlying the policy for revising seasonally-adjusted data, see the document "Seasonal Adjustment of Bank Deposits and Loans", available on the Bank's website. The data for the last month are provisional and partly estimated.

Tables 2.9 and 2.10 show loans and bad debts broken down according to the branches of economic activity into which credit to producer households and non-financial corporations is divided. Starting with the Supplement to the Statistical Bulletin "Money and Banking", no. 40 - 6 August 2010, the new statistical classification ATECO 2007, the Italian version of the European statistical classification NACE Rev. 2 adopted under Regulation (EC) No 1893/2006, replaces the previous classification ATECO 1981. The 25 branches in Tables 2.9 and 2.10 correspond to the maximum level of aggregation of the ATECO 2007 classification into sections. For the "Manufacturing" branch only (Section C in the ATECO 2007 classification), a further breakdown into 11 subgroups is provided. For some branches, data before June 2010 are partly estimated. Previous time series, based on ATECO 1981 and available from June 1998 to May 2010, are available on the Bank of Italy's website at the following address: Statistics/Statistical Database (BIP on-line)/Moneyand Banking/Tables no longer produced.

Table 2.11 provides the breakdown by type of security, other than shares, held in banks' portfolios. On the basis of the definition contained in the automated prudential returns that entered into force with the data referring to December 2008 (Circular no. 272 of 30 July 2008), listed securities belonging to the portfolio not held as financial fixed assets are reported at the fair value of the last trading day of the month the report refers to; other securities are reported at book value. The item "securities other than shares" includes unlisted debt securities and debt securities held to maturity. In earlier publications the securities portfolio was shown at book value in the section devoted to non-harmonized statistics. Here again, to avoid discontinuities in the series, they have been reconstructed from June 1998 onwards, using estimates where necessary.

Tables 2.12 and 2.13 show respectively the sectors holding securities of third parties in deposit at banks and the financial instruments held. Securities of third parties are held in deposit: for custody or administration; for activity of depositary bank; for portfolio management; and for other purposes. Table 2.12 refers only to debt instruments, while Table 2.13 refers to debt and capital instruments. Securities are reported at face value for Table 2.12 and at fair value for Table 2.13 and do not include those deposited by banks and central banks. The rest of the world includes the holdings of residents of other euro area countries.

Tables 2.14 and 2.15 give the stocks of securitized loans originated by banks resident in Italy. The time series of Table 2.14 comprise all securitized loans, both those removed from the bank's balance sheet (derecognized) and those that have not been taken off the books. The time series of Table 2.15 give the breakdown only for the amounts of the securitizations of loans that have been derecognized and removed from the balance sheet. In both tables securitizations of bad loans are shown, and there is a breakdown by borrower's economic sector.

THIRD SECTION. BANKS: INTEREST RATES

3.1 Introduction

The section contains information on the interest rates applied by Italian banks and, since October 2007 for ESCB harmonized interest rates, by Cassa Depositi e Prestiti S.p.A.

Figures 3.1 and 3.2 and Tables 3.1-3.5 contain ESCB harmonized statistics on euro deposits and loans to euro-area households and non-financial corporations. The harmonized statistics have been obtained since January 2003 through a sample survey in accordance with ECB Regulation 2001/18. At the end of 2010 the sample consisted of 109 banks, accounting for 81 per cent of the loans and 86 per cent of the deposits of the Italian banking system. At each reference date the sample reflects any mergers and spinoffs that have occurred. The interest rate refers to outstanding amounts and new business for the main forms of funding and lending. New business consists of loan contracts concluded during the reporting period or for which previously established terms and conditions have been renegotiated. Households include producer households and non-profit institutions serving households.

For details on the method of data collection and the sample selection criteria, see "The Harmonization of European Statistics on Bank Interest Rates and the Methodology Adopted by Italy", Bank of Italy, Supplements to the Statistical Bulletin - Methodological Notes and Statistical Information, October 2003. The accuracy of the sample survey is documented in "The Measurement of Sampling Error in Bank Interest Rate Statistics", Bank of Italy, Supplements to the Statistical Bulletin - Methodological Notes, June 2007.

For the interest rates that are particularly significant in the Italian banking system, the harmonized series have also been estimated for past periods, generally back to 1995. The methodology is described in "Estimating Time-Series of Harmonized Bank Interest Rates", Bank of Italy, Supplements to the Statistical Bulletin - Methodological Notes, February 2006.

The first part of Table 3.6 contains the interest rates on bank bonds and on short-term bank loans; the data are taken from ten-day reports. The ten-day survey is based on a sample of intermediaries that is rendered consistent with the sample that reports the harmonized data. Since June 2010 the interest rates on bank bonds have been calculated excluding the issues intended for subscription by members of the reporting bank's group. The second part of Table 3.6 contains interbank rates as reported by the Interbank Deposit Market (MID), calculated as the arithmetic average of the weighted average rates of daily turnover on MID.

On the Bank of Italy's website under Statistics/Statistical database (BIP on-line) information on the amount of new business conducted during the reporting month is available for each interest rate on new business published in the Supplement. Data on the amount of new business refer to all resident credit institutions and are estimated by applying expansion factors to the results of the sample of reporting agents for statistics on interest rates (further details on the estimation methodology are given in ECB Regulation 2009/07 and in the "Manual On MFI Interest Rate Statistics", <http://www.ecb.int/pub/pdf/other/mfiintrestratestisticsmanualen.pdf>). Information on new business volumes is collected in order to assess Italy's importance in the euro-area average interest rates on new business. Consequently, taking into account the methods of collecting and aims of these statistics, data on new business are not suitable for analysing monetary and credit developments in Italy. For this purpose reference should be made to the data on growth rates published in Tables 2.7 and 2.8 of the Supplement and in the press releases on "The Main items of bank's balance sheets"

3.2 Definition of the items

The average harmonized interest rates are constructed as the weighted average of the rates on the different instruments by maturity and amount; the weights are given by respective amounts of the various instruments. With regard to the average rates on new business, the frequency of turnover of deposits and loans, higher in the case of instruments with a shorter maturity, can influence the aggregate rate.

In the case of "new business", the rates are weighted by the amount of the disbursements. In the case of outstanding amounts, the rates are weighted by the account balances at the end of reference month. Overdrafts are not counted in new business for the purposes of reporting the harmonized rates; they are counted in the outstanding amounts of loans with a maturity of up to one

year and in the interest rates obtained as a weighted average when these include this segment. Advances against bills, other credit instruments and uncleared documents, and factoring advances are treated as overdrafts. The amount classes refer to the amount of the individual transaction and not to the bank's entire creditor position with the borrower. The disaggregation by maturity refers to the initial period of interest rate fixation, i.e. the period of time during which no contractual provision is made for a change in the interest rate. The rates include those on supported loans, for which the total interest rate must be reported, regardless of how much the customer pays. By contrast, the rates on bad debts and restructured loans are excluded. Loans "for other uses" comprise repos, advances on invoices and other secured loans. The annual percentage rate of charge (APRC) includes accessory expenses (administrative, application processing, insurance) provided for in Directive 87/102/EEC. The item "Consumer credit and other loans", determined only for the rates on outstanding amounts, comprises overdrafts, repos, advances against invoices and other secured loans.

Since June 2010 harmonized statistics on interest rates have been modified in accordance with Regulation ECB/2009/7; these changes and the revision of the sample of banks caused some discontinuities in the time series. The main methodological innovation is that bad loans (not to be included in the weighted interest rates) are now defined in accordance with Annex II to Regulation ECB/2008/32 and include loans in respect of which repayment is overdue or otherwise identified as being impaired, either partially or totally.

Since June 2010, a further innovation is that interest rates on new business exclude extended credit card debt and revolving loans. Rates on (outstanding) extended credit card debt are now included in the statistics on "Extended credit card debt" while rates on (outstanding) revolving loans are included in the statistics on "Overdrafts and revolving loans". Revolving loans are loans that have all the following features:

1. The borrower may use or withdraw funds up to a pre-approved credit limit without giving prior notice to the lender;
2. The amount of available credit can increase and decrease as funds are borrowed and repaid;
3. The credit may be used repeatedly;
4. There is no obligation of regular repayment of funds.

The revision of the sample of banks has affected mainly interest rates statistics on deposits.

REVISION OF THE DATA

In principle the data revision policy observed in this publication follows the ECB Guidelines on monetary and banking statistics (available at www.ecb.int). The data for the last available month are provisional; revisions of these statistics are classified as ordinary revisions in the lexicon of the European System of Central Banks. Any revisions for periods other than the last month are classified as extraordinary revisions and are generally incorporated into the publication upon transmission from the reporting institutions. The impact of revisions on the aggregates is negligible in the majority of cases; where it is not, the reasons for the revisions are specified in this Appendix. The estimated values of the time series may be revised in the future.

THE NEW STATISTICS ON BANK BALANCE SHEETS SINCE JUNE 2010

The entry into force of the new Regulation ECB/2008/32 as of June 2010 and some changes to the supervisory reports have produced some breaks in the time series on loans, deposits, securities other than shares and capital and reserves. Series on total assets and total liabilities also show a statistical break in June 2010 as a consequence of these discontinuities. In more detail time series on loans include securitized, or otherwise transferred, loans which do not satisfy the criteria for derecognition as established in the international accounting standard IAS 39. The adoption of these criteria implied the re-recognition of assets that had previously been cancelled from the balance sheet, with a corresponding increase in some time series. Breaks in time series affect both Sections 1 and 2 of this Supplement.

In Section 1, the main items concerned are the following: "Loans to euro-area residents" (Table 1.1a - code TAM10100); "Finance to other residents" (Table 1.3a - code TAM10300); "Loans to residents of Italy" (Table 1.9a - code TAM10900). In

Section 2, the main items interested by discontinuities are: "Loans to residents of Italy (Table 2.1a - code TSC20100); Breakdowns of loans by maturity, sector and type in Tables 2.3 and 2.4 (codes TSC20300 and TSC20400).

Since June 2010, securities other than shares held by banks include the asset-backed securities bought back by the same bank when the securitized loans have not been derecognized from the balance sheets. Previous rules implied that only a small part of these securities were included in the banks' portfolios. This series is now available in Table 2.11m (code TSC21000). Also since June 2010, securitization liabilities that are "Counterpart of loans and/or other assets" disposed of in a securitization but still recognized on the statistical balance sheet are included, by convention, among deposits with agreed maturity over two years, as specified in Regulation ECB/2008/32. This series is now available in Table 2.2 (code TSC20200). In the table 1.7a (code TAM10700) the item "deposits with agreed maturity over two years" includes liabilities related to securitisations (approximately 36 billions of euros in June 2010) but excludes those related to bonds connected with their own securitisation not derecognised.

The overall impact on the total balance sheet of the methodological changes discussed above is approximately 146.9 billions of euros. A summary table of the breaks in the time series in June 2010 is provided below.

Money and banks

Attachment

Main items interested by the changes	Tables	BIP Code	Millions of euros
Loans (including bad debts)	Table 1.1a Table 1.3a Table 1.9a Table 2.1a Table 2.4 Table 2.5	TAM10100; TAM10300; TAM10900; TSC20100; TSC20300; TSC20400	65,861
<i>Of which:</i>			
Loans to domestic non financial corporations	Table 2.4	TSC20300	6,501
Loans to domestic households	Table 2.4	TSC20300	58,921
<i>Of which:</i>			
Loans to domestic households - consumer credit	Table 2.5	TSC20400	3,917
Loans to domestic households - lending for house purchase	Table 2.5	TSC20400	49,401
Loans to domestic households - other lending	Table 2.5	TSC20400	5,603
Securities	Table 1.1a ; Table 1.9a; Table 2.1a; Table 2.11	TAM10100; TAM10900; TSC20100; TSC21000	81,098
Deposits: deposits with agreed maturity over 2 years	Table 1.1b; Table 1.3a; Table 1.7a; Table 1.9b; Table 2.1b; Table 2.2.	TAMI10110; TAM10300; TAM10700; TAM10910; TSC20110; TSC20200	146,959

GENERAL INFORMATION

- I - Unless indicated otherwise, figures have been computed by the Bank of Italy.
- II - Symbols and Conventions:
- the phenomenon in question does not occur;
 - the phenomenon occurs but its value is not known;
 - .. the value is known but is nil or less than half the final digit shown.
- Figures in parentheses in roman type () are provisional, those in parentheses in italics () are estimated.
- III - The tables are identified both by a number and by an alphanumeric code that defines the content of the table in the database in the electronic archive in which information to be released to the public is held. A similar code identifies the different aggregates shown in each table.
- IV - The methodological notes in the last part of the Supplement are identified by electronic codes that refer to the tables and, within each table, to the individual aggregates. Notes that refer to a single observation are also identified by the date of that observation.

SUPPLEMENTS TO THE STATISTICAL BULLETIN

Money and Banking (monthly)

The Financial Market (monthly)

The Public Finances, borrowing requirement and debt (monthly)

Balance of Payments and International Investment Position (monthly)

Financial Accounts (quarterly)

Payment System (half yearly)

Public Finance Statistics in the European Union (annual)

Local Government Debt (annual)

Household Wealth in Italy (annual)

Sample Surveys (irregular)

Methodological Notes (irregular)

All the supplements are available on the Bank of Italy's site (www.bancaditalia.it).

Requests for clarifications concerning data contained in this publication can be sent by e-mail to statistiche@bancaditalia.it

