



BANCA D'ITALIA
EUROSISTEMA

Supplements to the Statistical Bulletin

Monetary and Financial Indicators

Public Finance Statistics in the European Union

New series

Volume XX - 3 September 2010

Number

44

Contents

Figure 1	-	Net borrowing (+)/lending (-) in 2009
Figure 2	-	Gross public debt in 2009
Figure 3	-	Total revenue (Regulation EC 1500/2000) in 2009
Figure 4	-	Total expenditure (Regulation EC 1500/2000) in 2009
Figure 5	-	Tax revenue and social security contributions in the leading EU countries
Figure 6	-	Current expenditure, excluding interest payments (Regulation EC 1500/2000) in the leading EU countries
Figure 7	-	Interest payments in the leading EU countries
Figure 8	-	Investment in the leading EU countries
Table 1	- (TUEE0100)	- Net borrowing (+)/lending (-)
Table 2	- (TUEE0110)	- Primary net borrowing (+)/lending (-)
Table 3	- (TUEE0120)	- Current account balance
Table 4	- (TUEE0130)	- Capital account balance
Table 5	- (TUEE0140)	- Gross public debt
Table 6	- (TUEE0150)	- Total revenue (Regulation EC 1500/2000)
Table 7	- (TUEE0160)	- Current revenue (Regulation EC 1500/2000)
Table 8	- (TUEE0170)	- Tax revenue and social security contributions
Table 9	- (TUEE0180)	- Tax revenue and social security contributions, excluding capital taxes
Table 10	- (TUEE0210)	- Direct taxes
Table 11	- (TUEE0220)	- Indirect taxes
Table 12	- (TUEE0230)	- Social security contributions
Table 13	- (TUEE0240)	- Total expenditure (Regulation EC 1500/2000)
Table 14	- (TUEE0250)	- Total expenditure, excluding interest payments (Regulation EC 1500/2000)
Table 15	- (TUEE0260)	- Current expenditure (Regulation EC 1500/2000)
Table 16	- (TUEE0270)	- Current expenditure, excluding interest payments (Regulation EC 1500/2000)
Table 17	- (TUEE0280)	- Interest payments
Table 18	- (TUEE0290)	- Final consumption expenditure
Table 19	- (TUEE0300)	- Compensation of employees
Table 20	- (TUEE0330)	- Social benefits other than social transfers in kind
Table 21	- (TUEE0400)	- Capital expenditure
Table 22	- (TUEE0350)	- Investment
Methodological Appendix		
General information		

Public Finance Statistics in the European Union

Figure 1

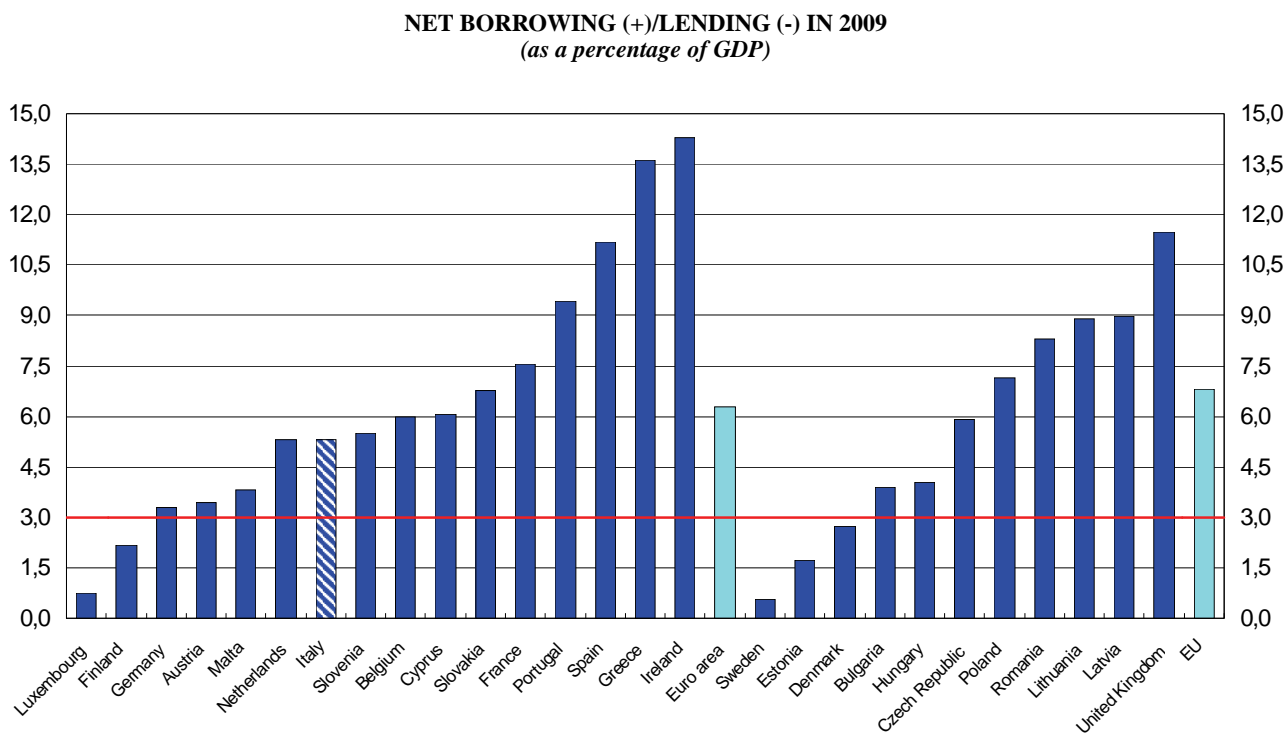
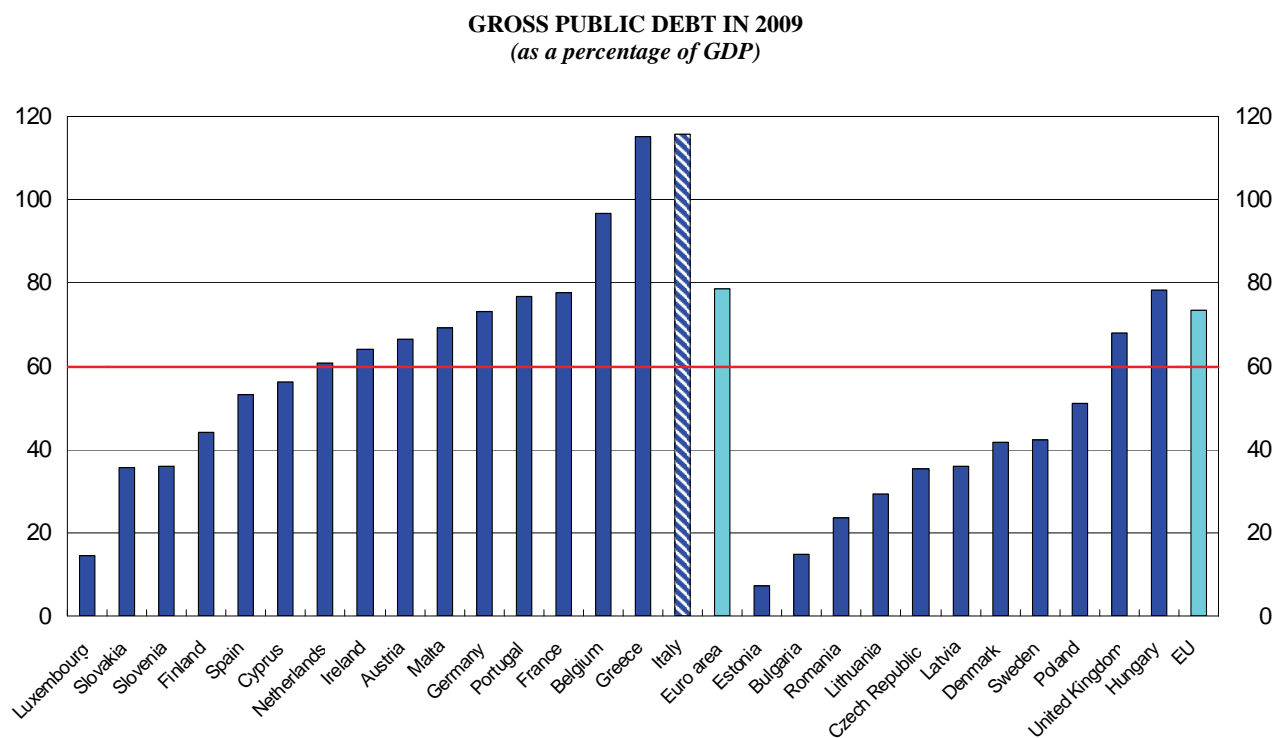


Figure 2



Public Finance Statistics in the European Union

Figure 3

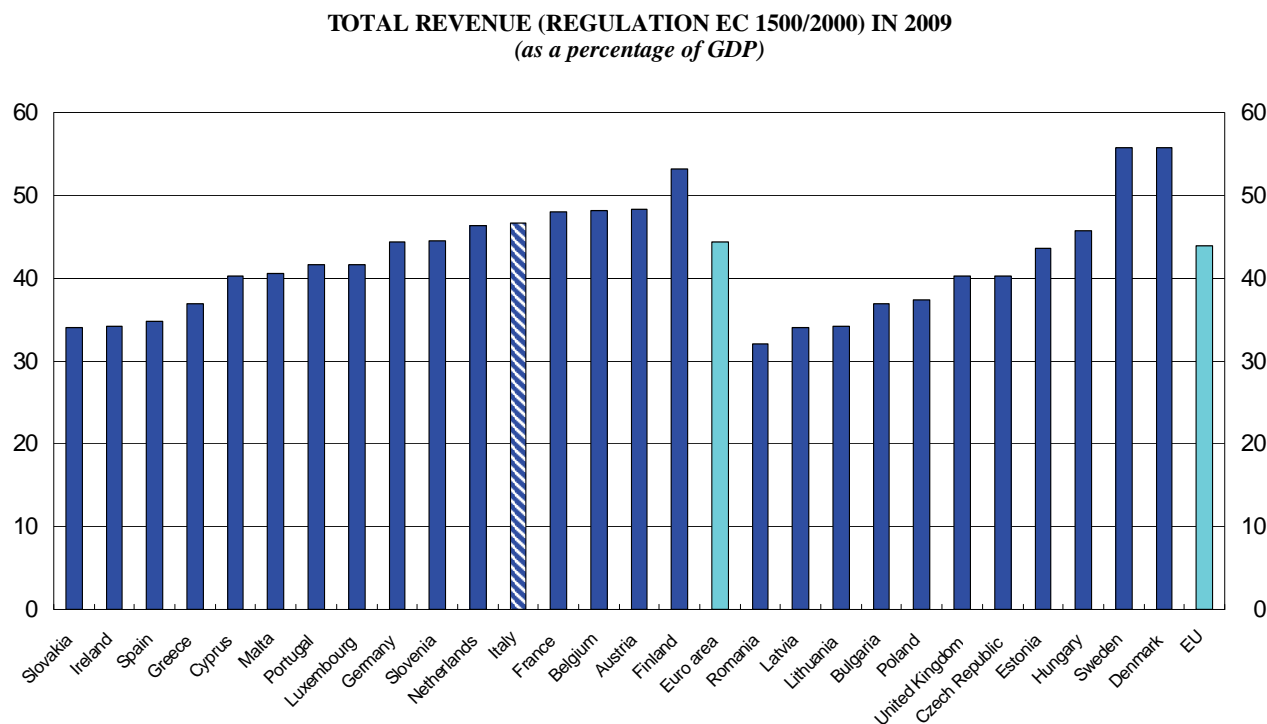
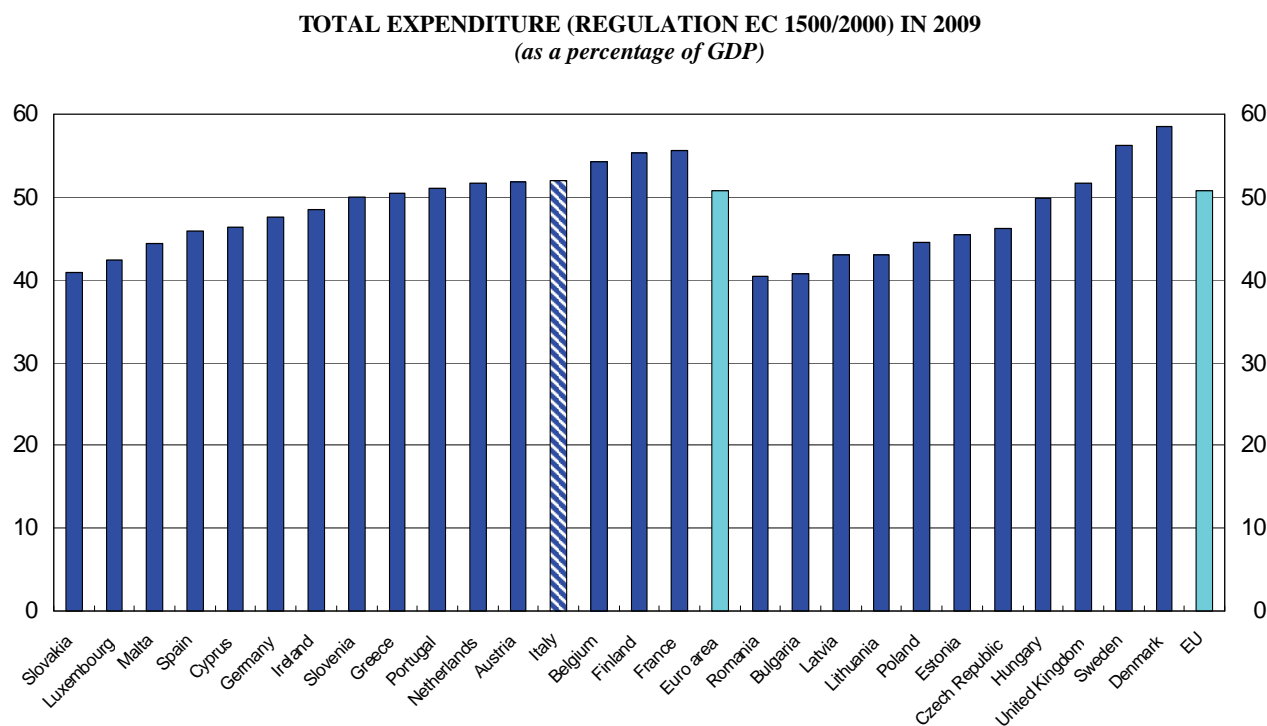


Figure 4



Public Finance Statistics in the European Union

Figure 5

TAX REVENUE AND SOCIAL SECURITY CONTRIBUTIONS IN THE LEADING EU COUNTRIES (as a percentage of GDP)

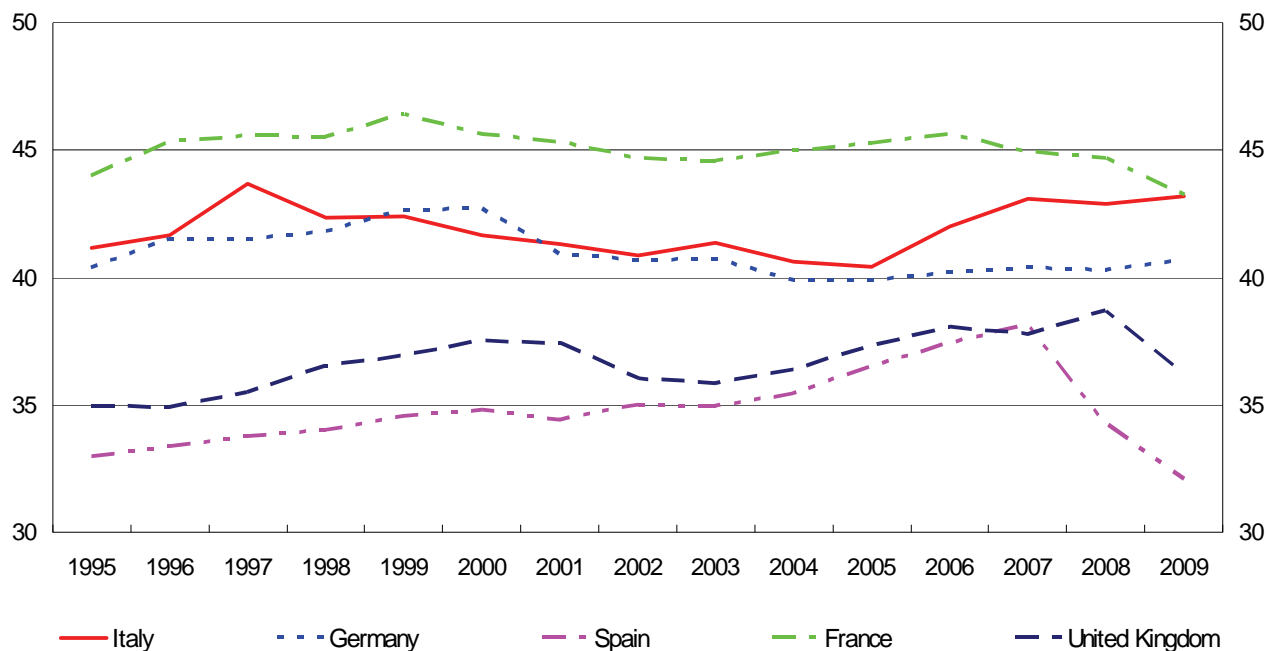
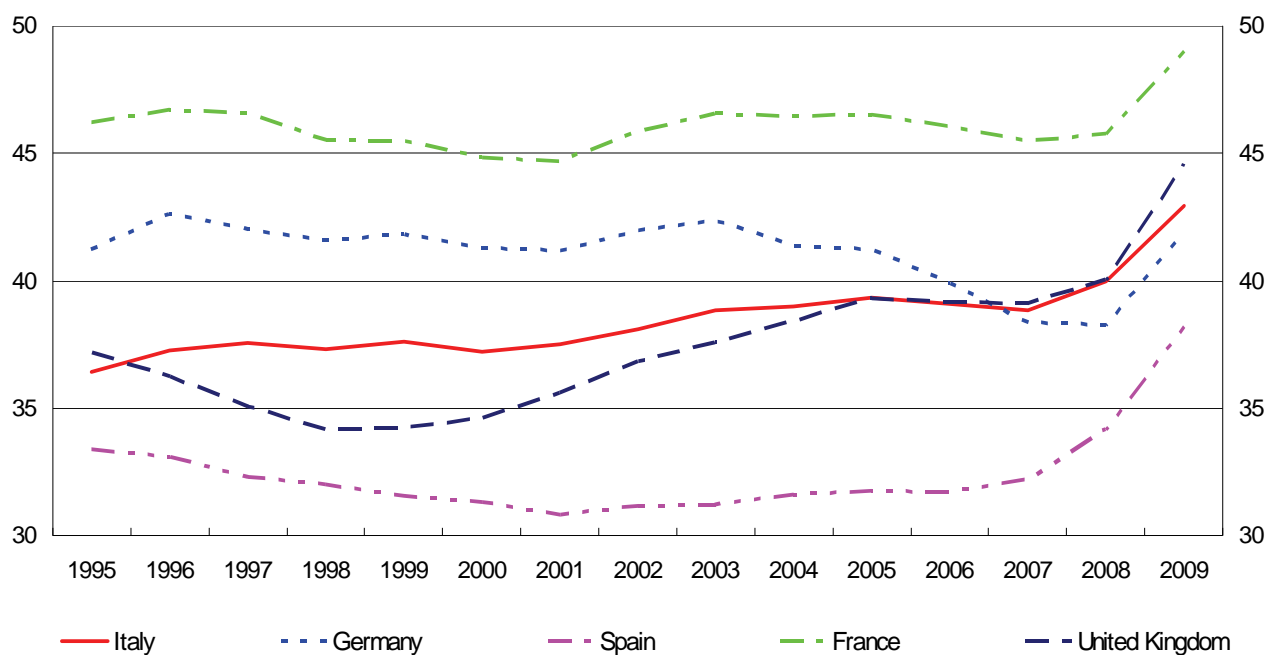


Figure 6

CURRENT EXPENDITURE, EXCLUDING INTEREST PAYMENTS (REGULATION EC 1500/2000) IN THE LEADING EU COUNTRIES (as a percentage of GDP)



Public Finance Statistics in the European Union

Figure 7

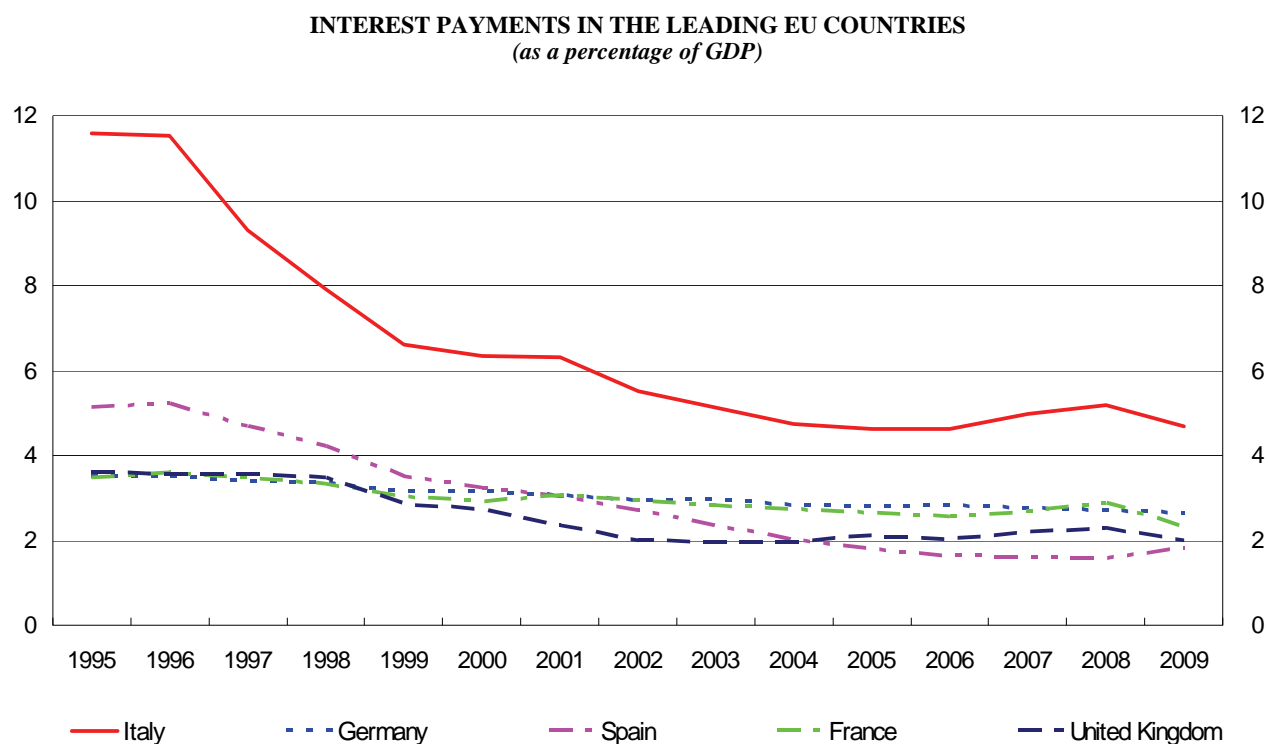
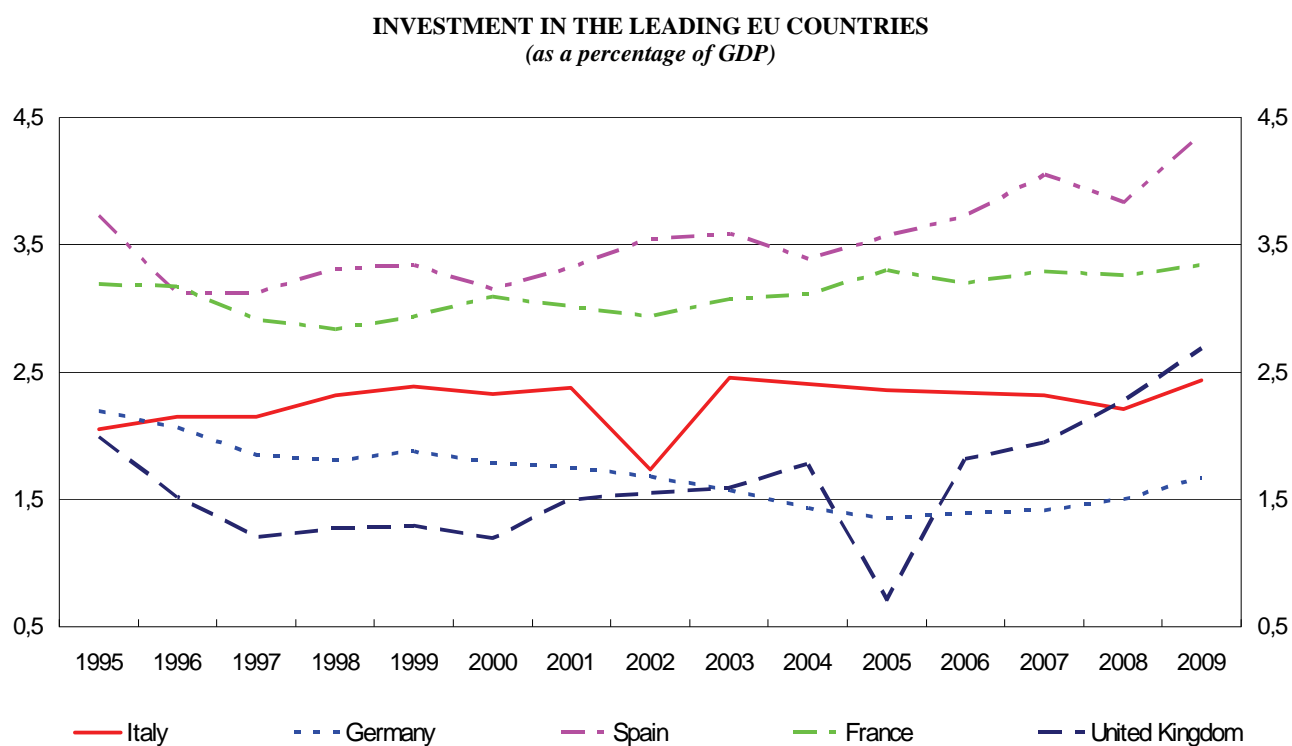


Figure 8



Public Finance Statistics in the European Union

Table 1
TUEE0100

Net borrowing (+)/lending (-)

(as a percentage of GDP)

	1992	1993	1994	1995	1996	1997	1998	1999	2000	2001	2002	2003	2004	2005	2006	2007	2008	2009
Italy S212733Y	10.4	10.0	9.1	7.4	7.0	2.7	2.8	1.7	0.8	3.1	2.9	3.5	3.5	4.3	3.3	1.5	2.7	5.3
Belgium S416942Y	6.9	7.2	4.8	4.5	4.0	2.3	0.9	0.6	0.0	-0.4	0.1	0.1	0.3	2.7	-0.3	0.2	1.2	6.0
Germany S413846Y	2.8	3.5	2.6	3.2	3.3	2.6	2.2	1.5	-1.3	2.8	3.7	4.0	3.8	3.3	1.6	-0.2	0.0	3.3
Ireland S986090Y	2.4	2.3	1.6	2.0	0.1	-1.1	-2.4	-2.7	-4.8	-0.9	0.3	-0.4	-1.4	-1.6	-3.0	-0.1	7.3	14.3
Greece S012944Y	12.6	13.6	9.9	9.1	6.6	5.9	3.8	3.1	3.7	4.5	4.8	5.6	7.5	5.2	3.6	5.1	7.7	13.6
Spain S188930Y	4.0	6.7	6.1	6.5	4.8	3.4	3.2	1.4	1.0	0.6	0.5	0.2	0.3	-1.0	-2.0	-1.9	4.1	11.2
France S529905Y	3.9	5.6	5.6	5.5	4.0	3.3	2.6	1.8	1.5	1.5	3.1	4.1	3.6	2.9	2.3	2.7	3.3	7.5
Cyprus S964736Y	0.8	3.2	5.0	4.1	4.3	2.3	2.2	4.4	6.5	4.1	2.4	1.2	-3.4	-0.9	6.1
Luxembourg S806706Y	-0.7	-1.5	-2.6	-2.4	-1.2	-3.7	-3.4	-3.4	-6.0	-6.1	-2.1	-0.5	1.1	0.0	-1.4	-3.6	-2.9	0.7
Malta S183993Y	4.2	8.0	7.7	9.9	7.7	6.2	6.4	5.5	9.8	4.7	2.9	2.6	2.2	4.5	3.8
Netherlands S317847Y	3.8	3.1	3.6	4.3	1.9	1.2	0.9	-0.4	-2.0	0.2	2.1	3.1	1.7	0.3	-0.5	-0.2	-0.7	5.3
Austria S229288Y	1.9	4.1	4.8	5.8	4.0	1.8	2.4	2.3	1.7	0.0	0.7	1.4	4.4	1.7	1.5	0.4	0.4	3.4
Portugal S730692Y	2.9	5.9	5.9	5.0	4.5	3.5	3.4	2.8	2.9	4.3	2.8	2.9	3.4	6.1	3.9	2.6	2.8	9.4
Slovenia S360626Y	8.4	1.1	2.4	2.4	3.0	3.7	4.0	2.5	2.7	2.2	1.4	1.3	0.0	1.7	5.5
Slovakia S544183Y	3.4	9.9	6.3	5.3	7.4	12.3	6.5	8.2	2.8	2.4	2.8	3.5	1.9	2.3	6.8
Finland S366317Y	5.7	7.8	6.0	6.2	3.5	1.4	-1.5	-1.6	-6.8	-5.0	-4.0	-2.4	-2.3	-2.7	-4.0	-5.2	-4.2	2.2
Euro area S391488Y	4.6	5.6	5.1	5.0	4.3	2.7	2.3	1.4	0.1	1.9	2.6	3.1	2.9	2.5	1.3	0.6	2.0	6.3
Euro area excluding Italy . . S473870Y	3.6	4.8	4.2	4.5	3.7	2.8	2.2	1.3	-0.1	1.6	2.5	3.0	2.8	2.1	0.9	0.4	1.8	6.5
Bulgaria S595598Y	3.4	1.8	-5.3	-1.3	-0.2	0.3	-0.6	0.8	0.3	-1.6	-1.9	-3.0	-0.1	-1.8	3.9
Czech Republic S232571Y	13.4	3.3	3.8	5.0	3.7	3.7	5.6	6.8	6.6	3.0	3.6	2.6	0.7	2.7	5.9
Denmark S615120Y	2.2	2.8	2.6	2.9	2.0	0.6	0.0	-1.3	-2.3	-1.5	-0.4	-0.1	-2.1	-5.2	-5.2	-4.8	-3.4	2.7
Estonia S810645Y	-1.1	0.4	-2.2	0.7	3.5	0.2	0.1	-0.3	-1.7	-1.6	-1.6	-2.5	-2.6	2.7	1.7
Latvia S994631Y	1.6	0.4	-1.1	0.0	3.9	2.8	2.1	2.3	1.6	1.0	0.4	0.5	0.3	4.1	9.0
Lithuania S637678Y	1.5	3.2	11.7	3.0	2.8	3.2	3.6	1.9	1.3	1.5	0.5	0.4	1.0	3.3	8.9
Hungary S763347Y	8.8	4.4	6.0	8.0	5.4	3.0	4.0	8.9	7.2	6.4	7.9	9.3	5.0	3.8	4.0
Poland S510168Y	4.4	4.9	4.6	4.3	2.3	3.0	5.3	5.0	6.2	5.4	4.1	3.6	1.9	3.7	7.1
Romania S925297Y	2.1	3.7	4.5	3.2	4.4	4.7	3.5	2.0	1.5	1.2	1.2	2.2	2.5	5.4	8.3
Sweden S122237Y	7.3	11.5	9.6	7.4	3.2	1.5	-1.1	-1.3	-3.7	-1.6	1.2	0.9	-0.8	-2.3	-2.5	-3.8	-2.5	0.5
United Kingdom S725209Y	6.1	7.7	6.7	5.9	4.3	2.2	0.1	-0.9	-3.6	-0.5	2.1	3.4	3.4	3.4	2.7	2.8	4.9	11.5
EU excluding euro area . . S518588Y	5.9	3.9	2.3	0.7	-0.4	-2.4	0.2	2.3	3.2	2.7	2.3	1.8	1.4	3.2	8.4
EU S019754Y	4.9	6.0	5.4	5.2	4.2	2.6	1.9	1.0	-0.6	1.4	2.5	3.1	2.9	2.5	1.4	0.8	2.3	6.8
EU excluding Italy S808385Y	4.1	5.4	4.8	4.9	3.7	2.6	1.7	0.9	-0.8	1.2	2.5	3.0	2.8	2.2	1.2	0.7	2.2	7.0
United States S910261Y	5.7	4.9	3.6	3.2	2.2	0.8	-0.4	-0.8	-1.5	0.5	3.9	4.9	4.4	3.2	2.0	2.7	6.3
Japan S451105Y	5.1	4.0	11.2	7.4	7.6	6.3	8.0	7.9	6.2	6.7	1.6	2.5
Canada S763208Y	9.1	8.7	6.7	5.3	2.8	-0.2	-0.1	-1.6	-2.9	-0.7	0.1	0.1	-0.9	-1.6	-1.6	-1.6	-0.1

Public Finance Statistics in the European Union

Table 2
TUEE0110

Primary net borrowing (+)/lending (-)

(as a percentage of GDP)

	1992	1993	1994	1995	1996	1997	1998	1999	2000	2001	2002	2003	2004	2005	2006	2007	2008	2009
Italy S238801Y	-1.8	-2.6	-2.3	-4.2	-4.6	-6.6	-5.1	-4.9	-5.5	-3.2	-2.7	-1.6	-1.2	-0.3	-1.3	-3.5	-2.5	0.6
Belgium S441592Y	-3.7	-3.5	-5.1	-4.3	-4.4	-5.4	-6.4	-6.2	-6.5	-6.8	-5.6	-5.2	-4.4	-1.5	-4.2	-3.6	-2.6	2.3
Germany S440855Y	-0.4	0.2	-0.7	-0.3	-0.2	-0.7	-1.2	-1.7	-4.5	-0.2	0.7	1.1	1.0	0.5	-1.2	-3.0	-2.7	0.7
Ireland S021923Y	-4.3	-4.0	-4.0	-3.2	-4.4	-5.2	-5.7	-5.0	-6.8	-2.4	-1.1	-1.6	-2.5	-2.7	-4.0	-1.2	5.9	12.2
Greece S035677Y	1.1	1.0	-4.0	-2.2	-3.9	-3.4	-4.3	-4.3	-3.6	-2.0	-0.7	0.7	2.6	0.7	-0.6	0.9	3.1	8.5
Spain S217678Y	-0.3	1.7	1.4	1.4	-0.4	-1.3	-1.0	-2.1	-2.2	-2.4	-2.2	-2.1	-1.7	-2.8	-3.7	-3.5	2.5	9.4
France S560580Y	0.7	2.3	2.2	2.0	0.4	-0.2	-0.7	-1.2	-1.4	-1.5	0.2	1.3	0.9	0.3	-0.3	0.0	0.5	5.2
Cyprus S034201Y	-1.2	0.8	2.6	1.1	1.3	-1.0	-1.1	1.2	3.1	0.8	-1.1	-2.1	-6.4	-3.7	3.6
Luxembourg S833059Y	-1.1	-1.9	-3.0	-2.8	-1.6	-4.1	-3.8	-3.7	-6.3	-6.4	-2.4	-0.7	0.9	-0.2	-1.5	-3.9	-3.2	0.2
Malta S204693Y	2.2	5.7	5.0	6.7	4.0	2.5	3.1	1.9	6.4	1.1	-0.8	-1.0	-1.2	1.2	0.6
Netherlands S333693Y	-2.3	-2.9	-2.0	-1.3	-3.4	-3.7	-3.8	-4.7	-5.6	-2.9	-0.7	0.6	-0.7	-2.1	-2.7	-2.4	-2.8	3.0
Austria S255319Y	-2.2	-0.1	0.9	1.8	0.1	-1.8	-1.2	-1.1	-1.8	-3.4	-2.5	-1.5	1.5	-1.2	-1.3	-2.3	-2.1	0.7
Portugal S753271Y	-4.1	-0.1	-0.2	-0.8	-0.5	-0.4	0.2	-0.2	-0.1	1.3	0.0	0.2	0.7	3.5	1.2	-0.2	-0.1	6.6
Slovenia S382743Y	6.2	-1.0	0.0	0.2	0.7	1.3	1.6	0.3	0.7	0.5	-0.1	-0.1	-1.3	0.6	4.1
Slovakia S569687Y	1.0	7.4	3.9	2.8	4.0	8.2	2.5	4.7	0.3	0.2	1.1	2.0	0.5	1.1	5.3
Finland S392463Y	3.1	3.3	1.0	2.2	-0.7	-2.8	-5.0	-4.6	-9.6	-7.6	-6.1	-4.2	-3.9	-4.2	-5.5	-6.7	-5.6	1.0
Euro area S552039Y	-0.7	0.0	-0.3	-0.5	-1.2	-2.2	-2.3	-2.6	-3.8	-1.9	-0.9	-0.2	-0.2	-0.4	-1.6	-2.3	-1.0	3.5
Euro area excluding Italy . . S568861Y	-0.5	0.6	0.0	0.3	-0.5	-1.2	-1.6	-2.1	-3.5	-1.7	-0.5	0.1	0.1	-0.5	-1.6	-2.1	-0.7	4.0
Bulgaria S617276Y	-10.7	-19.3	-13.6	-5.5	-3.9	-3.7	-4.0	-1.5	-1.7	-3.4	-3.6	-4.4	-1.1	-2.7	3.1
Czech Republic S257360Y	12.4	2.1	2.7	3.9	2.7	2.9	4.6	5.5	5.5	1.8	2.4	1.5	-0.5	1.6	4.6
Denmark S643949Y	-4.4	-4.5	-4.1	-3.0	-3.6	-4.4	-4.5	-5.4	-5.9	-4.8	-3.4	-2.8	-4.4	-7.1	-6.8	-6.3	-4.8	0.7
Estonia S840303Y	-1.6	0.0	-2.4	0.1	3.2	0.0	-0.1	-0.5	-1.9	-1.9	-1.8	-2.7	-2.8	2.5	1.4
Latvia S012101Y	0.6	-1.0	-2.1	-0.8	3.2	1.8	1.2	1.5	0.9	0.3	-0.1	0.0	0.0	3.5	7.4
Lithuania S664938Y	1.2	2.4	11.0	1.9	1.4	1.5	2.0	0.6	0.0	0.6	-0.3	-0.3	0.3	2.6	7.9
Hungary S790043Y	-0.2	-4.7	-3.0	0.6	-1.5	-2.1	-0.6	4.9	3.2	2.0	3.8	5.4	0.9	-0.4	-0.7
Poland S535222Y	-1.3	0.3	0.1	0.3	-0.6	0.0	2.1	2.1	3.2	2.6	1.3	1.0	-0.4	1.5	4.5
Romania S958667Y	0.4	1.9	0.0	-0.7	-0.6	0.7	0.1	-0.5	-0.1	-0.2	0.1	1.3	1.8	4.7	6.8
Sweden S154449Y	2.2	5.7	3.3	2.0	-2.1	-3.6	-5.8	-5.2	-7.2	-4.4	-1.7	-1.1	-2.4	-3.9	-4.2	-5.6	-4.1	-0.4
United Kingdom S758368Y	3.4	4.9	3.5	2.3	0.7	-1.4	-3.4	-3.8	-6.3	-2.8	0.1	1.4	1.5	1.3	0.7	0.6	2.6	9.5
EU excluding euro area . . S588601Y	1.6	-0.3	-1.7	-3.1	-3.5	-5.4	-2.3	0.1	1.1	0.7	0.2	-0.2	-0.6	1.2	6.4
EU S052711Y	-0.1	0.8	0.2	-0.1	-1.0	-2.1	-2.5	-2.8	-4.2	-2.0	-0.6	0.1	0.1	-0.3	-1.2	-1.9	-0.5	4.2
EU excluding Italy S833516Y	0.2	1.3	0.6	0.6	-0.5	-1.4	-2.0	-2.5	-4.0	-1.9	-0.3	0.4	0.3	-0.3	-1.2	-1.6	-0.2	4.7
United States S937176Y	0.9	0.4	-0.8	-1.4	-2.3	-3.5	-4.5	-4.5	-5.1	-2.7	1.0	2.3	1.9	0.6	-0.6	-0.2	3.6
Japan S480451Y	1.6	0.6	7.7	3.9	4.3	3.1	5.0	5.1	3.6	4.3	-0.8	0.0
Canada S790629Y	-0.2	-0.5	-2.3	-4.2	-6.3	-8.6	-8.3	-9.3	-10.1	-7.3	-5.7	-5.3	-5.8	-6.1	-5.9	-5.7	-4.0

Public Finance Statistics in the European Union

Table 3
TUEE0120

Current account balance

(as a percentage of GDP)

	1992	1993	1994	1995	1996	1997	1998	1999	2000	2001	2002	2003	2004	2005	2006	2007	2008	2009
Italy S302836Y	8.1	6.8	5.9	3.8	3.7	0.2	-0.3	-1.7	-1.3	-0.8	-0.3	0.8	0.4	0.6	-1.4	-2.3	-0.8	2.0
Belgium S495829Y	5.0	5.1	3.0	2.0	1.6	-0.3	-1.6	-2.0	-2.6	-2.4	-1.9	-0.7	-1.4	-1.7	-2.1	-1.9	-0.9	3.1
Germany S503822Y	-1.4	-0.5	-1.0	0.1	0.5	0.1	-0.5	-1.2	-1.6	-0.1	0.8	1.3	1.3	0.9	-0.6	-2.4	-2.4	0.7
Ireland S076359Y	1.2	1.0	-0.6	0.0	-1.8	-2.9	-4.4	-6.9	-7.8	-5.1	-3.5	-3.8	-4.7	-5.0	-6.3	-4.3	1.3	7.8
Greece S091012Y	7.0	7.9	7.1	6.1	4.7	2.4	0.3	-0.6	0.1	0.1	0.6	1.8	3.1	2.3	2.1	3.3	5.2	10.4
Spain S269349Y	-0.7	1.7	1.5	1.9	1.3	-0.3	-1.0	-2.6	-3.0	-3.5	-3.9	-3.9	-4.0	-5.1	-6.4	-6.9	-1.1	5.2
France S634691Y	0.4	2.2	2.1	0.9	0.1	0.0	-1.1	-2.0	-2.1	-2.0	-0.3	0.7	0.1	-0.3	-1.3	-1.1	-0.6	3.4
Cyprus S105877Y	-3.2	-0.4	1.1	0.8	1.2	-1.1	-1.1	0.9	2.6	0.6	-0.2	-2.5	-7.0	-4.4	1.3
Luxembourg S902570Y	-7.4	-7.1	-7.7	-8.6	-8.5	-10.7	-9.8	-8.1	-6.1	-4.5	-5.7	-6.5	-8.0	-7.0	-4.1
Malta S240744Y	1.3	5.5	4.1	5.8	3.6	2.6	2.4	1.5	2.4	2.2	1.6	1.3	-0.4	2.2	1.8
Netherlands S389165Y	0.9	0.3	1.0	0.8	-0.9	-1.6	-2.0	-3.4	-4.5	-3.5	-1.7	-0.7	-1.4	-2.8	-3.5	-3.4	-4.3	0.2
Austria S311892Y	-2.6	-0.8	0.0	1.3	-0.5	-1.9	-1.7	-1.3	-1.5	-3.3	-2.5	-1.6	-2.1	-1.5	-1.6	-2.7	-2.5	0.7
Portugal S817307Y	-0.8	2.0	2.8	1.5	0.5	-0.7	-1.1	-1.3	-0.6	0.6	0.3	1.3	2.4	3.2	1.6	0.0	0.9	6.4
Slovenia S430261Y	-3.3	-2.9	-1.4	-2.2	-2.1	-0.8	-0.4	-1.4	-1.8	-2.2	-2.5	-2.8	-4.7	-3.7	-0.3
Slovakia S626945Y	-4.3	-0.1	-0.9	-0.8	-0.9	0.3	1.4	1.9	-0.2	-0.3	-1.0	0.5	-0.6	-1.0	2.9
Finland S435865Y	2.1	4.9	2.9	0.8	-0.5	-1.6	-4.3	-4.7	-9.3	-7.5	-6.6	-5.1	-5.0	-5.2	-6.2	-7.6	-6.6	-0.7
Euro area S901582Y	1.0	1.8	1.5	1.3	1.0	-0.2	-0.9	-1.9	-2.2	-1.6	-0.7	0.0	-0.3	-0.7	-2.0	-2.7	-1.4	2.5
Euro area excluding Italy . . S794756Y	-0.2	1.1	0.7	0.8	0.4	-0.3	-1.1	-2.0	-2.4	-1.8	-0.8	-0.2	-0.4	-1.0	-2.1	-2.8	-1.6	2.6
Bulgaria S667461Y	-5.7	-5.0	-4.0	-5.6	-3.3	-3.7	-6.1	-6.6	-7.5	-7.6	-7.0	-1.5
Czech Republic S315925Y	-5.8	-4.7	-4.3	-4.1	-3.1	-2.4	-2.7	-2.0	-1.4	-4.0	-3.5	-3.7	-4.7	-3.0	0.9
Denmark S705252Y	0.4	1.0	0.7	0.9	-0.1	-1.4	-1.9	-3.1	-4.0	-3.0	-1.9	-1.6	-3.5	-6.7	-6.8	-6.4	-5.6	0.5
Estonia S889781Y	-5.9	-4.2	-6.7	-4.7	-0.9	-3.5	-4.3	-5.7	-6.0	-5.1	-5.3	-6.8	-7.8	-3.3	-2.2
Latvia S056777Y	-0.9	-2.1	-1.4	-2.2	0.3	-0.2	-1.2	-1.0	-1.1	-2.7	-3.5	-5.5	-5.7	-0.1	5.0
Lithuania S714466Y	-3.0	-1.7	-3.3	-0.7	-0.6	-1.5	-0.7	-1.6	-1.8	-2.0	-2.4	-3.0	-3.6	-1.1	6.1
Hungary S859296Y	2.8	0.3	1.0	0.6	0.7	-2.5	-2.0	0.5	2.1	2.0	3.2	4.0	0.4	0.3	1.5
Poland S615623Y	0.5	0.0	0.0	-0.6	-1.6	0.1	1.2	1.0	1.8	1.5	0.2	-0.7	-2.5	-1.3	1.4
Romania S018706Y	-2.5	-1.0	1.2	0.4	1.3	0.3	-0.5	-2.4	-3.3	-3.4	-3.4	-4.3	-4.2	-1.3	2.4
Sweden S236464Y	3.2	6.6	6.4	3.2	-0.1	-1.9	-3.3	-4.5	-6.4	-4.5	-1.9	-2.0	-3.6	-5.4	-5.7	-7.0	-5.7	-3.2
United Kingdom S816979Y	3.2	4.9	4.2	3.0	2.0	0.5	-1.5	-2.5	-2.7	-2.4	0.1	1.2	1.2	1.1	0.2	0.3	1.6	6.8
EU excluding euro area . . S875774Y	2.2	1.0	-0.1	-1.7	-2.6	-2.9	-2.3	-0.3	0.4	0.0	-0.5	-1.3	-1.7	-0.5	3.9
EU S111851Y	1.4	2.4	2.0	1.5	1.0	-0.2	-1.1	-2.1	-2.4	-1.8	-0.6	0.1	-0.2	-0.6	-1.8	-2.4	-1.2	2.9
EU excluding Italy S899034Y	0.5	1.9	1.5	1.1	0.6	-0.2	-1.2	-2.2	-2.6	-1.9	-0.6	0.0	-0.3	-0.8	-1.8	-2.4	-1.3	3.0
United States S982684Y	3.5	2.8	1.5	1.2	0.1	-1.2	-2.4	-2.9	-3.7	-1.7	1.5	2.4	1.9	0.7	-0.2	0.1	3.4
Japan S527186Y	-2.8	-2.8	-1.3	0.2	0.2	-0.1	2.1	2.4	2.6	1.4	-0.2	-0.2
Canada S841805Y	6.0	5.9	3.9	2.6	0.4	-2.2	-2.1	-3.6	-5.1	-3.0	-2.3	-2.3	-3.5	-4.4	-4.5	-4.6	-3.5

Capital account balance

(as a percentage of GDP)

	1992	1993	1994	1995	1996	1997	1998	1999	2000	2001	2002	2003	2004	2005	2006	2007	2008	2009
Italy S310569Y	2.3	3.3	3.2	3.7	3.3	2.4	3.1	3.4	2.2	3.9	3.2	2.7	3.1	3.7	4.7	3.8	3.5	3.3
Belgium S501937Y	1.9	2.1	1.8	2.5	2.4	2.6	2.5	2.6	2.7	2.0	2.0	0.8	1.7	4.4	1.8	2.1	2.1	2.8
Germany S510830Y	4.2	4.0	3.5	3.1	2.8	2.5	2.7	2.7	0.3	2.9	2.8	2.7	2.5	2.4	2.2	2.2	2.4	2.6
Ireland S085742Y	1.2	1.3	2.2	2.1	1.9	1.8	2.0	4.2	3.1	4.2	3.8	3.4	3.3	3.4	3.3	4.1	6.0	6.5
Greece S099465Y	5.6	5.6	2.8	3.0	2.0	3.5	3.6	3.7	3.6	4.3	4.1	3.8	4.4	2.8	1.5	1.8	2.4	3.3
Spain S275886Y	4.7	5.1	4.6	4.6	3.5	3.7	4.3	4.1	4.0	4.2	4.4	4.1	4.4	4.1	4.4	5.0	5.1	6.0
France S641997Y	3.4	3.4	3.6	4.6	3.9	3.3	3.7	3.8	3.6	3.6	3.4	3.4	3.5	3.2	3.6	3.9	3.9	4.1
Cyprus S117378Y	4.1	3.6	3.9	3.3	3.1	3.4	3.3	3.5	3.9	3.4	2.6	3.7	3.6	3.4	4.8
Luxembourg S908998Y	5.0	5.9	4.0	5.3	5.1	4.7	3.7	6.0	5.7	5.6	5.7	5.1	4.4	4.1	4.8
Malta S245890Y	2.9	2.4	3.6	4.1	4.1	3.5	4.0	4.0	7.4	2.5	1.3	1.2	2.6	2.3	2.0
Netherlands S399282Y	2.9	2.8	2.7	3.5	2.8	2.8	2.8	3.0	2.5	3.7	3.8	3.8	3.2	3.1	2.9	3.2	3.6	5.1
Austria S322146Y	4.5	4.9	4.8	4.5	4.5	3.7	4.1	3.6	3.1	3.3	3.2	3.0	6.5	3.2	3.1	3.1	2.9	2.7
Portugal S826093Y	3.7	3.9	3.1	3.5	4.0	4.2	4.5	4.1	3.6	3.7	2.5	1.6	1.0	2.8	2.3	2.6	1.9	3.1
Slovenia S437665Y	11.6	4.1	3.8	4.6	5.1	4.5	4.4	3.9	4.4	4.4	3.9	4.2	4.7	5.4	5.8
Slovakia S633950Y	7.7	10.1	7.2	6.1	8.3	12.0	5.1	6.3	3.0	2.7	3.8	2.9	2.5	3.3	3.8
Finland S442951Y	3.7	2.9	3.2	5.4	4.1	3.0	2.8	3.1	2.4	2.6	2.7	2.6	2.7	2.5	2.2	2.4	2.4	2.9
Euro area S922729Y	3.6	3.8	3.5	3.8	3.3	2.9	3.2	3.3	2.3	3.5	3.3	3.0	3.2	3.2	3.3	3.3	3.4	3.8
Euro area excluding Italy . . S606672Y	3.8	3.8	3.5	3.8	3.3	3.0	3.2	3.3	2.3	3.4	3.3	3.1	3.2	3.1	3.0	3.2	3.4	3.9
Bulgaria S675961Y	4.5	4.9	4.3	5.0	4.1	4.1	4.5	4.7	4.5	7.5	5.2	5.4
Czech Republic S321758Y	19.2	8.0	8.1	9.1	6.8	6.1	8.3	8.8	8.0	7.0	7.1	6.3	5.4	5.7	5.0
Denmark S716392Y	1.9	1.8	1.9	2.0	2.1	2.0	1.9	1.8	1.8	1.5	1.6	1.5	1.5	1.5	1.6	1.7	2.2	2.2
Estonia S895450Y	4.8	4.6	4.5	5.4	4.4	3.8	4.3	5.4	4.3	3.5	3.7	4.3	5.2	6.1	3.9
Latvia S065445Y	2.5	2.6	0.3	2.2	3.6	3.0	3.3	3.3	2.7	3.7	3.9	6.0	6.0	4.3	4.0
Lithuania S721074Y	4.6	4.9	15.1	3.7	3.4	4.7	4.3	3.5	3.1	3.5	2.9	3.5	4.7	4.4	2.8
Hungary S868450Y	6.0	4.1	5.0	7.4	4.7	5.5	6.1	8.5	5.1	4.4	4.7	5.3	4.6	3.5	2.6
Poland S625092Y	4.0	4.9	4.6	4.9	3.9	3.0	4.1	4.0	4.4	3.8	3.8	4.3	4.3	5.0	5.7
Romania S025924Y	4.6	4.7	3.3	2.8	3.1	4.3	4.0	4.4	4.8	4.6	4.5	6.5	6.7	6.7	5.9
Sweden S244717Y	4.1	4.8	3.2	4.2	3.3	3.4	2.2	3.2	2.7	2.8	3.1	3.0	2.8	3.1	3.1	3.1	3.2	3.7
United Kingdom S825520Y	2.8	2.8	2.5	2.9	2.2	1.6	1.6	1.6	-0.8	1.9	1.9	2.2	2.2	2.3	2.5	2.5	3.4	4.7
EU excluding euro area . . S615058Y	3.7	2.9	2.4	2.3	2.2	0.5	2.5	2.7	2.8	2.7	2.8	3.1	3.1	3.7	4.5
EU S116032Y	3.5	3.7	3.4	3.7	3.2	2.8	3.0	3.1	1.8	3.2	3.1	3.0	3.1	3.1	3.2	3.2	3.5	3.9
EU excluding Italy S908384Y	3.6	3.6	3.3	3.8	3.2	2.9	3.0	3.0	1.8	3.1	3.1	3.0	3.0	3.0	3.0	3.2	3.5	4.0
United States S992338Y	2.2	2.1	2.0	2.0	2.1	2.0	2.0	2.2	2.2	2.3	2.4	2.5	2.4	2.5	2.3	2.5	2.9
Japan S548060Y	7.9	6.9	12.5	7.2	7.5	6.4	5.9	5.5	3.5	5.3	1.8	2.8
Canada S850720Y	3.1	2.8	2.8	2.7	2.4	2.0	2.0	2.0	2.2	2.3	2.4	2.4	2.6	2.8	3.0	3.1	3.4

Gross public debt

(as a percentage of GDP)

	1992	1993	1994	1995	1996	1997	1998	1999	2000	2001	2002	2003	2004	2005	2006	2007	2008	2009
Italy S164287Y	105.5	115.7	121.8	121.5	120.9	118.1	114.9	113.7	109.2	108.8	105.7	104.4	103.8	105.8	106.5	103.5	106.1	115.8
Belgium S381161Y	128.8	134.2	131.5	129.9	127.0	122.3	117.4	113.7	107.9	106.6	103.5	98.5	94.2	92.1	88.1	84.2	89.8	96.7
Germany S383684Y	43.0	46.9	49.3	55.6	58.4	59.7	60.3	60.9	59.7	58.8	60.4	63.9	65.7	68.0	67.6	65.0	66.0	73.2
Ireland S950832Y	89.7	93.6	87.7	82.1	73.5	64.3	53.6	48.5	37.8	35.6	32.2	31.0	29.7	27.6	24.9	25.0	43.9	64.0
Greece S964495Y	87.8	110.1	107.9	97.0	99.4	96.6	94.5	94.0	103.4	103.7	101.7	97.4	98.6	100.0	97.8	95.7	99.2	115.1
Spain S152268Y	46.6	58.1	60.5	63.3	67.4	66.1	64.1	62.3	59.3	55.5	52.5	48.7	46.2	43.0	39.6	36.2	39.7	53.2
France S495862Y	38.9	44.3	47.6	55.5	58.0	59.3	59.4	58.8	57.3	56.9	58.8	62.9	64.9	66.4	63.7	63.8	67.5	77.6
Cyprus S927219Y	40.6	42.8	46.7	51.2	51.8	48.7	52.1	64.6	68.9	70.2	69.1	64.6	58.3	48.4	56.2
Luxembourg S767900Y	4.7	5.7	5.4	7.4	7.4	7.4	7.1	6.4	6.2	6.3	6.3	6.1	6.3	6.1	6.5	6.7	13.7	14.5
Malta S155247Y	35.3	40.1	48.4	53.4	57.1	55.9	62.1	60.1	69.3	72.3	70.1	63.7	61.9	63.7	69.1
Netherlands S289714Y	76.7	78.0	74.7	76.1	74.1	68.2	65.7	61.1	53.8	50.7	50.5	52.0	52.4	51.8	47.4	45.5	58.2	60.9
Austria S182377Y	55.8	60.4	63.0	68.3	68.3	64.4	64.8	67.2	66.5	67.1	66.5	65.5	64.8	63.9	62.2	59.5	62.6	66.5
Portugal S694495Y	60.7	61.3	62.1	61.0	59.9	56.1	52.1	51.4	50.5	52.9	55.6	56.9	58.3	63.6	64.7	63.6	66.3	76.8
Slovenia S331933Y	26.8	28.0	27.5	27.2	27.0	26.7	23.4	22.6	35.9
Slovakia S511562Y	22.1	31.1	33.8	34.5	47.9	50.3	48.9	43.4	42.4	41.5	34.2	30.5	29.3	27.7	35.7
Finland S329985Y	40.6	56.7	58.2	56.6	57.0	53.9	48.4	45.7	43.8	42.5	41.5	44.5	44.4	41.7	39.7	35.2	34.2	44.0
Euro area S632925Y	59.8	66.2	68.8	72.7	74.4	73.8	72.6	71.8	69.4	68.2	68.0	69.1	69.5	70.0	68.3	65.9	69.4	78.7
Euro area excluding Italy. S642131Y	50.2	55.7	57.7	62.5	64.5	64.2	63.5	62.9	60.8	59.5	59.9	61.5	62.1	62.4	60.2	58.2	61.9	71.1
Bulgaria S566576Y	105.1	79.6	79.3	74.3	67.3	53.6	45.9	37.9	29.2	22.7	18.2	14.1	14.8
Czech Republic S191451Y	14.6	12.5	13.1	15.0	16.4	18.5	24.9	28.2	29.8	30.1	29.7	29.4	29.0	30.0	35.4
Denmark S576514Y	66.3	78.0	73.5	72.5	69.2	65.2	60.8	57.4	51.5	48.7	48.3	45.8	44.5	37.1	32.1	27.4	34.2	41.6
Estonia S780619Y	9.0	7.4	6.2	5.5	6.0	5.1	4.8	5.7	5.6	5.0	4.6	4.5	3.8	4.6	7.2
Latvia S960776Y	15.1	13.9	11.1	9.6	12.5	12.3	14.0	13.5	14.6	14.9	12.4	10.7	9.0	19.5	36.1
Lithuania S608676Y	11.5	13.8	15.4	16.5	22.7	23.7	23.1	22.3	21.1	19.4	18.4	18.0	16.9	15.6	29.3
Hungary S713412Y	86.2	72.7	63.2	61.2	60.3	55.0	52.0	55.6	58.4	59.1	61.8	65.6	65.9	72.9	78.3
Poland S468039Y	49.0	43.4	42.9	38.9	39.6	36.8	37.6	42.2	47.1	45.7	47.1	47.7	45.0	47.2	51.0
Romania S884859Y	7.0	11.1	15.2	16.6	21.7	22.5	25.7	24.9	21.5	18.7	15.8	12.4	12.6	13.3	23.7
Sweden S080151Y	63.2	71.2	73.8	72.2	73.0	71.0	69.1	64.8	53.6	54.4	52.6	52.3	51.1	50.8	45.7	40.8	38.3	42.3
United Kingdom S700901Y	40.8	47.5	49.4	50.8	51.0	49.8	46.7	43.7	41.0	37.7	37.5	38.7	40.6	42.2	43.5	44.7	52.0	68.1
EU excluding euro area . S670973Y	54.3	53.3	51.7	48.4	46.0	42.2	39.9	39.9	41.0	41.7	42.0	41.8	41.1	45.6	56.9
EU S978342Y	57.3	64.0	66.4	68.9	69.9	68.5	66.7	65.3	62.2	60.8	60.6	62.0	62.3	62.7	61.2	59.2	63.2	73.5
EU excluding Italy S771253Y	49.5	55.4	57.2	60.5	61.7	60.7	59.3	58.0	55.2	53.6	53.9	55.5	56.0	56.3	54.6	52.9	57.1	67.2
United States S899643Y	70.2	71.8	71.0	70.6	69.8	67.3	64.1	60.4	54.5	54.4	56.8	60.1	61.1	61.4	60.9	61.9	70.3	83.0
Japan S979763Y	67.6	73.9	79.0	86.2	93.8	100.5	113.2	127.0	135.4	143.7	152.3	158.0	165.5	175.3	172.2	167.1	173.8	192.9
Canada S267719Y	90.2	96.3	98.0	101.6	101.7	96.3	95.2	91.4	82.1	82.7	80.5	76.6	72.6	71.6	69.5	65.0	69.7	82.5

Total revenue (Regulation EC 1500/2000)

(as a percentage of GDP)

	1992	1993	1994	1995	1996	1997	1998	1999	2000	2001	2002	2003	2004	2005	2006	2007	2008	2009
Italy S347697Y	45.0	46.3	44.4	45.1	45.5	47.6	46.2	46.4	45.3	44.9	44.4	44.8	44.2	43.8	45.4	46.4	46.2	46.6
Italy - Traditional account . S334938Y	45.2	46.6	44.7	45.3	45.7	47.7	46.2	46.4	45.4	45.0	44.5	45.1	44.5	44.2	45.8	46.9	46.7	47.2
Belgium S510269Y	47.6	48.5	49.0	49.5	49.5	49.1	49.5	49.7	50.9	49.0	49.4	48.7	48.2	48.8	48.2
Germany S518793Y	45.1	46.0	45.7	45.9	46.6	46.4	44.7	44.4	44.5	43.3	43.5	43.7	43.9	43.7	44.3
Ireland S101502Y	39.1	39.0	38.1	36.8	36.7	36.1	34.2	33.2	33.6	34.9	35.5	37.4	36.7	34.7	34.1
Greece S105280Y	36.7	37.4	39.0	40.5	41.3	43.0	40.9	40.3	39.0	38.0	38.5	39.3	39.7	39.1	36.9
Spain S282326Y	38.0	38.4	38.2	37.8	38.4	38.1	38.0	38.4	38.2	38.5	39.4	40.4	41.1	37.0	34.7
France S656471Y	49.0	50.4	50.8	50.1	50.8	50.2	50.0	49.5	49.2	49.6	50.4	50.4	49.6	49.5	48.1
Cyprus S127832Y	32.3	31.9	31.1	32.6	32.5	34.7	35.9	35.8	38.5	38.7	41.2	42.2	45.5	43.5	40.3
Luxembourg S916135Y	42.1	42.3	44.3	44.4	42.6	43.6	44.2	43.6	42.2	41.5	41.5	39.7	39.8	40.1	41.6
Malta S250523Y	35.5	34.6	35.3	33.1	35.3	34.8	36.6	37.7	37.9	40.8	42.0	41.2	40.3	40.3	40.5
Netherlands S408394Y	47.2	47.5	46.3	45.8	46.4	46.1	45.1	44.1	43.9	44.3	44.5	46.1	45.7	46.6	46.3
Austria S333625Y	50.5	51.8	51.7	51.5	51.3	50.3	51.4	50.1	49.9	49.5	48.4	47.9	48.1	48.4	48.3
Portugal S834253Y	38.4	39.7	39.7	39.4	40.5	40.2	40.1	41.4	42.5	43.1	41.6	42.3	43.2	43.2	41.6
Slovenia S447376Y	44.3	43.3	42.5	43.3	43.4	43.0	43.6	43.9	43.7	43.6	43.8	43.2	42.4	42.6	44.4
Slovakia S639431Y	45.2	43.8	42.6	40.5	40.7	39.9	38.0	36.9	37.4	35.3	35.2	33.5	32.5	32.5	34.0
Finland S449138Y	55.3	56.5	55.1	54.4	53.2	55.1	52.8	52.8	52.4	52.1	52.7	52.9	52.5	53.6	53.2
Euro area S694022Y	45.6	46.4	46.6	46.2	46.7	46.2	45.4	45.0	45.0	44.6	44.8	45.3	45.4	44.9	44.4
Euro area excluding Italy. S718663Y	45.7	46.6	46.4	46.2	46.7	46.4	45.5	45.1	45.0	44.6	45.0	45.3	45.2	44.6	44.0
Bulgaria S686662Y	40.6	42.0	42.2	40.9	39.5	40.0	41.3	41.2	39.5	41.5	39.1	36.9
Czech Republic S326105Y	41.0	39.3	39.4	38.2	38.6	38.1	38.7	39.5	40.7	42.2	41.4	41.1	41.8	40.2	40.3
Denmark S724813Y	56.4	56.9	56.1	56.2	56.8	55.8	55.4	54.8	55.0	56.4	57.8	56.6	55.7	55.3	55.8
Estonia S908676Y	42.4	39.1	39.6	38.5	36.7	35.9	34.7	36.0	36.5	35.6	35.2	36.5	37.4	37.1	43.6
Latvia S072093Y	37.0	36.5	37.5	40.2	37.9	34.6	32.5	33.4	33.2	34.7	35.1	37.7	35.4	34.4	34.0
Lithuania S727933Y	32.9	33.1	37.9	37.1	37.1	35.9	33.2	32.9	31.9	31.8	32.8	33.1	33.8	34.2	34.1
Hungary S878970Y	47.5	47.1	44.5	44.0	43.7	43.8	43.2	42.3	42.2	42.3	42.2	42.6	44.8	45.4	45.8
Poland S634064Y	43.3	46.1	41.8	40.1	40.4	38.1	38.5	39.3	38.5	37.2	39.4	40.2	40.3	39.6	37.4
Romania S031462Y	33.8	30.9	30.5	32.0	34.8	33.8	32.5	33.0	32.0	32.3	32.3	33.1	33.5	32.1	32.1
Sweden S260619Y	57.8	59.7	59.3	60.1	59.8	59.3	57.2	55.3	55.8	56.1	57.2	56.5	56.3	55.5	55.7
United Kingdom S832983Y	38.0	38.0	38.3	39.4	39.8	40.3	40.6	39.0	38.7	39.5	40.7	41.3	41.4	42.4	40.2
EU excluding euro area . S732643Y	43.0	43.5	42.6	43.0	43.3	43.2	43.0	41.7	41.7	42.2	43.2	43.5	43.4	43.7	42.4
EU S122513Y	45.1	45.8	45.7	45.4	45.8	45.4	44.8	44.1	44.1	43.9	44.4	44.8	44.9	44.6	43.9
EU excluding Italy S916551Y	45.1	45.8	45.4	45.3	45.8	45.4	44.7	44.1	44.0	43.9	44.5	44.7	44.6	44.3	43.5
United States S000863Y
Japan S559225Y
Canada S861325Y

Current revenue (Regulation EC 1500/2000)

(as a percentage of GDP)

	1992	1993	1994	1995	1996	1997	1998	1999	2000	2001	2002	2003	2004	2005	2006	2007	2008	2009
Italy S187164Y	42.8	45.4	44.0	44.3	45.1	46.6	45.5	45.9	44.9	44.6	43.9	43.1	43.3	43.3	45.1	46.1	45.9	45.6
Italy - Traditional account . S352890Y	43.1	45.7	44.3	44.5	45.2	46.7	45.5	45.9	44.9	44.8	44.1	43.4	43.6	43.8	45.6	46.6	46.5	46.2
Belgium S396251Y	47.2	48.0	48.4	49.0	48.9	48.5	49.0	49.1	48.5	48.1	48.4	48.0	47.4	48.1	47.5
Germany S397653Y	44.6	45.5	45.3	45.4	46.2	46.0	44.4	44.0	44.0	42.9	43.1	43.3	43.5	43.3	43.9
Ireland S965736Y	37.3	37.4	36.3	35.2	35.1	34.6	33.0	31.9	32.4	33.8	34.4	36.1	35.3	33.7	32.9
Greece S984999Y	35.3	35.5	37.0	38.3	39.2	40.1	39.4	39.0	37.3	36.3	36.9	36.9	37.3	37.1	35.5
Spain S170453Y	36.6	37.0	37.3	37.2	37.7	37.6	37.4	37.7	37.5	37.7	38.6	39.7	40.6	36.8	34.8
France S512587Y	48.8	50.2	50.0	49.9	50.5	49.8	49.8	49.1	48.6	49.0	49.4	50.0	49.3	49.2	47.9
Cyprus S944076Y	32.1	31.8	31.0	32.5	32.4	34.6	35.9	35.8	38.4	37.9	40.2	42.2	45.5	43.5	40.2
Luxembourg S786325Y	41.9	42.2	44.1	44.2	42.4	43.4	44.1	43.4	42.0	41.2	41.3	39.5	39.6	39.8	41.4
Malta S167973Y	34.8	32.6	34.2	32.2	34.2	33.7	36.3	37.2	37.4	38.8	38.4	37.9	39.0	39.6	39.4
Netherlands S306512Y	46.9	47.0	46.0	45.4	46.0	45.7	44.7	43.7	43.6	44.0	44.1	45.7	45.3	46.2	46.0
Austria S206857Y	50.2	51.7	51.5	51.4	51.0	50.1	51.3	49.9	49.7	49.3	48.3	47.7	47.9	48.3	48.2
Portugal S712292Y	36.6	37.7	37.4	37.9	38.8	38.8	38.4	39.6	39.8	39.6	40.1	41.2	42.3	42.3	40.7
Slovenia S343032Y	44.1	43.2	42.3	43.0	43.2	42.8	43.4	43.7	43.6	43.5	43.6	43.0	42.0	42.3	44.1
Slovakia S531046Y	45.2	43.6	42.6	40.4	40.6	39.8	37.9	36.8	37.4	35.2	35.2	33.4	32.3	32.5	34.0
Finland S346559Y	55.1	56.2	54.8	54.1	52.9	54.8	52.4	52.4	52.1	51.7	52.3	52.5	52.1	53.2	52.8
Euro area S757500Y	45.0	45.9	45.9	45.7	46.2	45.7	45.0	44.5	44.1	43.9	44.1	44.8	44.9	44.5	44.0
Euro area excluding Italy . S777444Y	45.2	46.0	45.8	45.7	46.2	45.9	45.1	44.6	44.3	44.0	44.3	44.8	44.7	44.2	43.7
Bulgaria S581912Y	40.5	42.6	42.5	42.0	40.0	40.6	42.0	41.6	39.7	40.9	38.7	37.0
Czech Republic S213183Y	40.5	39.1	39.3	38.0	38.5	37.9	38.5	39.4	40.5	41.8	41.1	40.5	41.0	39.4	38.8
Denmark S591689Y	55.8	56.5	55.6	55.8	56.2	55.3	54.9	54.2	54.5	55.6	57.2	55.9	55.1	54.7	55.3
Estonia S792886Y	41.9	38.8	39.3	38.1	36.4	35.5	34.6	35.7	36.1	35.3	34.9	35.7	36.6	36.7	42.1
Latvia S978257Y	36.8	35.8	35.7	38.7	37.2	33.9	32.4	33.1	33.1	34.3	34.0	36.6	34.7	33.1	33.0
Lithuania S625045Y	32.9	33.1	37.9	37.1	37.0	35.8	33.1	32.4	31.5	31.3	32.0	32.1	32.3	33.0	32.5
Hungary S736818Y	47.2	46.6	44.2	43.6	43.3	43.4	42.7	41.8	41.8	41.9	41.6	41.7	44.0	44.8	44.6
Poland S489353Y	43.2	42.6	41.8	40.1	40.4	38.1	38.5	39.3	38.4	37.2	38.8	39.7	39.8	39.1	36.8
Romania S903388Y	33.8	30.9	30.5	32.0	34.8	33.7	32.4	32.9	31.9	31.9	32.0	32.9	33.4	32.0	31.7
Sweden S100540Y	57.6	59.6	59.1	59.9	59.6	59.2	57.0	55.1	55.6	56.0	57.1	56.4	56.2	55.5	55.7
United Kingdom S713235Y	37.7	37.7	38.1	39.1	39.6	40.1	40.3	38.7	38.4	39.1	40.3	41.0	41.0	40.7	39.8
EU excluding euro area . . S800323Y	42.8	43.0	42.3	42.7	43.1	43.0	42.7	41.4	41.4	41.9	42.8	43.1	43.0	42.6	41.9
EU S999966Y	44.5	45.2	45.1	45.0	45.4	45.0	44.4	43.7	43.4	43.4	43.8	44.4	44.4	44.0	43.5
EU excluding Italy S791068Y	44.6	45.3	44.8	44.9	45.3	45.0	44.3	43.7	43.5	43.4	43.9	44.2	44.2	43.7	43.2
United States S893334Y	29.0	29.1	29.4	29.7	30.2	30.5	30.9	30.9	31.4	30.3	27.8	27.2	27.5	29.0	29.8	29.9	28.1
Japan S424961Y	29.8	29.9	29.5	29.4	29.6	30.5	29.1	28.8	28.1	29.4	30.7	31.1
Canada S747203Y	40.8	40.1	39.7	39.7	40.3	40.7	40.7	40.3	40.4	39.0	37.6	37.6	37.5	37.6	37.7	37.5	36.6

Tax revenue and social security contributions

(as a percentage of GDP)

	1992	1993	1994	1995	1996	1997	1998	1999	2000	2001	2002	2003	2004	2005	2006	2007	2008	2009
Italy S276937Y	41.9	42.9	40.8	41.2	41.6	43.7	42.3	42.4	41.6	41.3	40.8	41.4	40.6	40.4	42.0	43.1	42.9	43.2
Belgium S473018Y	46.4	47.0	47.8	44.9	45.6	46.1	46.7	46.8	46.4	46.5	46.7	46.2	46.4	46.3	45.9	45.4	45.9	45.3
Germany S476444Y	41.9	42.4	42.9	40.4	41.5	41.5	41.8	42.6	42.7	40.9	40.7	40.7	39.9	39.9	40.2	40.4	40.3	40.6
Ireland S048567Y	34.6	34.7	35.8	33.7	33.9	33.2	32.3	32.5	32.2	30.5	29.5	30.0	31.4	31.9	33.5	32.6	30.7	29.1
Greece S066905Y	30.2	30.6	31.9	33.7	34.8	36.0	34.7	35.3	33.8	33.1	33.7	33.5	34.0	33.5	32.1
Spain S248527Y	37.0	36.1	35.7	32.9	33.3	33.8	34.0	34.5	34.8	34.4	35.0	35.0	35.4	36.5	37.4	38.1	34.3	32.1
France S596440Y	44.6	44.9	45.3	44.0	45.3	45.5	45.5	46.4	45.6	45.3	44.7	44.5	44.9	45.3	45.6	44.9	44.6	43.2
Cyprus S077842Y	26.7	26.2	25.6	27.7	28.0	30.0	30.9	31.2	33.0	33.2	35.3	36.2	40.7	39.0	35.5
Luxembourg S867583Y	37.4	37.9	39.7	39.8	38.7	39.4	40.2	39.8	38.8	38.0	38.2	36.2	36.3	36.2	38.1
Malta S222615Y	27.9	26.8	28.8	26.9	28.7	29.3	31.9	33.0	32.8	34.0	35.0	34.7	35.6	35.5	36.0
Netherlands S360001Y	45.6	46.8	44.7	40.3	40.5	39.8	39.7	40.6	40.1	38.7	38.2	37.9	38.0	38.1	39.3	39.1	39.3	38.8
Austria S283614Y	43.5	44.5	43.3	43.0	44.5	45.8	45.9	45.6	44.7	46.6	45.3	45.2	44.7	43.7	43.3	43.5	44.2	43.8
Portugal S788320Y	34.7	33.7	33.8	32.0	32.9	33.0	33.4	34.2	34.6	34.4	35.3	35.7	34.9	36.0	36.7	37.5	37.5	35.9
Slovenia S410866Y	39.5	38.3	37.2	38.1	38.4	37.7	38.0	38.2	38.4	38.4	38.7	38.3	37.6	37.4	38.8
Slovakia S603181Y	40.4	39.5	37.4	36.8	35.5	34.2	33.2	33.2	33.1	31.5	31.2	29.1	29.0	28.9	29.0
Finland S419086Y	46.3	44.8	47.0	45.6	47.0	46.3	46.2	45.8	47.0	44.6	44.6	44.0	43.4	43.9	43.7	42.9	43.1	42.9
Euro area S826271Y	42.7	43.2	42.8	40.6	41.5	41.9	41.8	42.3	42.0	41.1	40.8	40.7	40.5	40.6	41.2	41.3	40.7	40.2
Euro area excluding Italy . . S842773Y	42.6	42.9	43.1	40.5	41.5	41.5	41.7	42.3	42.1	41.1	40.8	40.6	40.4	40.6	41.0	40.9	40.3	39.6
Bulgaria S646155Y	36.8	37.2	34.0	31.6	31.7	33.0	32.2	30.3	33.0	34.0	34.7	34.0	34.3	33.2	30.9
Czech Republic S291136Y	36.2	34.7	35.0	33.4	34.1	33.9	34.0	34.8	35.8	37.3	36.8	36.4	36.9	35.2	34.3
Denmark S678500Y	48.3	49.8	50.9	49.8	50.2	49.9	50.2	50.9	50.2	49.3	48.7	48.9	49.9	51.7	50.5	49.8	48.9	49.0
Estonia S867040Y	36.3	34.3	34.3	34.1	32.6	31.0	30.3	31.1	30.8	30.4	30.4	30.8	32.0	32.0	36.0
Latvia S036548Y	33.2	30.8	32.1	33.8	32.3	29.7	28.7	28.5	28.7	28.5	28.9	30.3	30.4	29.0	26.5
Lithuania S696348Y	30.6	31.8	32.0	30.4	29.0	28.6	28.2	28.4	28.5	29.4	29.7	30.2	29.3
Hungary S827446Y	41.3	40.1	38.5	38.5	38.7	39.1	38.3	37.9	38.0	37.3	37.3	37.0	39.5	40.1	39.2
Poland S578412Y	37.3	37.4	36.6	35.6	35.1	32.8	32.2	32.9	32.5	31.7	32.9	33.9	34.7	34.2	31.7
Romania S987464Y	29.3	27.3	26.9	29.0	31.3	30.6	28.9	28.5	28.1	27.7	28.5	29.2	29.5	28.5	28.0
Sweden S206530Y	48.7	47.7	47.1	47.8	50.3	50.7	51.4	51.8	51.9	50.0	48.2	48.7	49.1	49.9	49.4	48.7	47.6	47.8
United Kingdom S792164Y	34.0	33.1	33.7	35.0	34.9	35.5	36.5	36.9	37.5	37.4	36.0	35.8	36.3	37.3	38.1	37.7	38.7	36.2
EU excluding euro area . . S855559Y	38.4	38.6	38.4	38.9	39.3	39.3	38.7	37.7	37.7	38.1	38.8	39.2	38.9	39.0	37.4
EU S087728Y	41.8	42.0	41.8	40.2	40.9	41.1	41.1	41.6	41.3	40.5	40.0	40.0	39.8	40.1	40.6	40.6	40.3	39.5
EU excluding Italy S869738Y	41.6	41.6	41.9	40.0	40.7	40.7	40.9	41.4	41.2	40.4	39.8	39.8	39.7	40.1	40.4	40.3	39.9	39.0
United States S960925Y
Japan S508404Y
Canada S820519Y

Tax revenue and social security contributions, excluding capital taxes

(as a percentage of GDP)

	1992	1993	1994	1995	1996	1997	1998	1999	2000	2001	2002	2003	2004	2005	2006	2007	2008	2009
Italy S249600Y	39.9	42.2	40.7	40.6	41.4	43.0	42.0	42.3	41.5	41.2	40.6	40.0	40.0	40.3	42.0	43.0	42.8	42.4
Belgium S448954Y	46.1	46.6	47.4	44.5	45.2	45.7	46.3	46.3	45.9	46.0	46.3	45.7	45.6	45.7	45.3	44.8	45.2	44.6
Germany S448636Y	41.8	42.3	42.8	40.3	41.4	41.4	41.7	42.5	42.5	40.8	40.5	40.6	39.7	39.7	40.0	40.2	40.1	40.5
Ireland S030391Y	34.5	34.5	35.6	33.6	33.7	33.0	32.1	32.3	32.0	30.4	29.4	29.9	31.3	31.8	33.3	32.4	30.5	29.0
Greece S043169Y	31.7	32.3	33.2	29.9	30.3	31.6	33.4	34.5	35.7	34.4	35.0	33.6	32.9	33.5	33.4	33.9	33.3	31.9
Spain S225994Y	36.8	35.9	35.5	32.6	33.0	33.4	33.6	34.2	34.4	34.0	34.6	34.6	35.0	36.0	36.9	37.6	33.8	31.7
France S570008Y	43.9	44.4	44.7	43.6	44.9	45.1	45.1	45.9	45.1	44.8	44.2	44.1	44.4	44.8	45.1	44.4	44.2	42.8
Cyprus S046506Y	26.6	26.1	25.6	27.6	27.9	29.9	30.9	31.2	32.9	32.5	34.4	36.2	40.6	39.0	35.4
Luxembourg S839409Y	37.3	37.8	39.5	39.7	38.5	39.3	40.1	39.7	38.6	37.9	38.1	36.1	36.1	36.1	37.9
Malta S209140Y	27.8	26.7	28.7	26.8	28.6	29.2	31.8	32.9	32.7	33.8	34.6	34.4	35.3	35.2	35.8
Netherlands S339431Y	45.4	46.5	44.4	40.0	40.2	39.6	39.4	40.3	39.8	38.4	37.8	37.5	37.7	37.8	38.9	38.8	39.0	38.5
Austria S260869Y	43.4	44.4	43.2	42.9	44.4	45.8	45.9	45.6	44.7	46.6	45.3	45.1	44.7	43.7	43.2	43.5	44.1	43.8
Portugal S761261Y	34.6	33.6	33.7	31.9	32.9	32.9	33.4	34.1	34.5	34.3	35.2	35.6	34.9	36.0	36.7	37.5	37.5	35.9
Slovenia S389111Y	39.4	38.3	37.2	37.9	38.2	37.6	37.8	38.1	38.4	38.4	38.6	38.3	37.6	37.4	38.7
Slovakia S579657Y	40.4	39.5	37.4	36.8	35.4	34.1	33.2	33.1	33.0	31.5	31.2	29.1	29.0	28.9	29.0
Finland S400460Y	46.1	44.6	46.8	45.4	46.8	46.1	45.9	45.5	46.7	44.3	44.3	43.7	43.1	43.5	43.4	42.6	42.8	42.7
Euro area S869777Y	42.0	42.7	42.4	40.4	41.3	41.6	41.5	42.1	41.7	40.9	40.5	40.3	40.1	40.3	40.9	41.0	40.5	39.8
Euro area excluding Italy . . S888601Y	42.2	42.5	42.6	40.3	41.2	41.3	41.4	42.0	41.8	40.8	40.5	40.3	40.1	40.3	40.7	40.6	40.0	39.3
Bulgaria S622647Y	36.6	37.0	33.9	31.5	31.6	32.8	32.1	30.1	32.8	33.8	34.4	33.6	33.7	32.7	30.6
Czech Republic S263262Y	36.2	34.7	35.0	33.4	34.1	33.9	34.0	34.8	35.8	37.2	36.8	36.4	36.9	35.2	34.3
Denmark S651514Y	48.0	49.5	50.7	49.6	49.9	49.7	50.0	50.7	49.9	49.1	48.5	48.7	49.7	51.5	50.2	49.5	48.7	48.8
Estonia S846889Y	36.3	34.3	34.3	34.1	32.6	31.0	30.3	31.1	30.8	30.4	30.4	30.8	32.0	32.0	36.0
Latvia S018646Y	33.2	30.8	32.1	33.8	32.3	29.7	28.7	28.5	28.7	28.5	28.9	30.3	30.3	29.0	26.4
Lithuania S671587Y	27.5	27.1	30.6	31.8	32.0	30.4	29.0	28.5	28.2	28.4	28.5	29.4	29.6	30.2	29.3
Hungary S799667Y	41.3	40.1	38.5	38.5	38.6	39.1	38.2	37.8	37.9	37.3	37.2	36.9	39.5	40.0	39.1
Poland S545921Y	37.2	37.4	36.6	35.6	35.1	32.7	32.2	32.9	32.4	31.7	32.9	33.9	34.6	34.2	31.6
Romania S966098Y	29.3	27.3	26.9	29.0	31.3	30.6	28.9	28.5	28.1	27.7	28.5	29.2	29.5	28.5	28.0
Sweden S169929Y	48.6	47.6	47.0	47.7	50.2	50.6	51.3	51.7	51.8	49.9	48.1	48.6	49.0	49.9	49.4	48.7	47.6	47.8
United Kingdom S767898Y	33.8	32.9	33.5	34.8	34.7	35.3	36.3	36.7	37.3	37.2	35.8	35.6	36.1	37.1	37.8	37.5	37.1	35.9
EU excluding euro area . . S902801Y	38.2	38.4	38.3	38.8	39.1	39.2	38.6	37.5	37.5	37.9	38.7	39.0	38.7	38.1	37.2
EU S062814Y	41.2	41.6	41.5	39.9	40.6	40.8	40.8	41.3	41.0	40.3	39.7	39.6	39.5	39.9	40.4	40.4	39.8	39.2
EU excluding Italy S841580Y	41.2	41.3	41.5	39.8	40.5	40.4	40.7	41.2	41.0	40.1	39.6	39.5	39.4	39.8	40.2	40.0	39.4	38.7
United States S947599Y	26.8	27.0	27.3	27.7	28.1	28.4	28.9	28.9	29.3	28.2	25.9	25.4	25.7	27.1	27.9	27.9	26.0
Japan S490803Y	27.2	27.4	27.0	26.9	27.3	28.3	27.0	26.9	26.3	27.4	28.6	28.9
Canada S804070Y	36.1	35.6	35.1	35.1	35.8	36.4	36.4	36.2	35.7	34.6	33.6	33.3	33.3	33.3	33.3	33.2	32.1

Public Finance Statistics in the European Union

Table 10
TUEE0210

Direct taxes

(as a percentage of GDP)

	1992	1993	1994	1995	1996	1997	1998	1999	2000	2001	2002	2003	2004	2005	2006	2007	2008	2009
Italy S180050Y	14.3	15.7	14.6	14.5	15.1	15.8	14.3	14.9	14.4	14.7	13.9	13.4	13.3	13.3	14.4	15.1	15.3	14.6
Belgium S387637Y	16.2	16.2	17.4	16.3	16.3	16.8	17.3	16.9	17.0	17.2	17.1	16.6	16.7	16.9	16.5	16.3	16.6	15.3
Germany S389099Y	11.6	11.2	10.8	10.8	11.2	11.0	11.3	11.8	12.3	10.9	10.6	10.4	10.0	10.2	10.8	11.2	11.3	10.8
Ireland S958516Y	14.1	14.8	15.2	13.5	13.9	13.8	13.6	13.7	13.3	12.6	11.5	11.8	12.3	12.2	13.0	12.6	11.4	10.3
Greece S974469Y	5.4	5.7	6.8	6.6	6.4	7.0	8.5	8.8	9.7	8.6	8.6	7.8	8.0	8.5	8.0	7.9	7.7	8.0
Spain S161705Y	12.0	11.5	11.0	9.9	10.1	10.3	10.0	10.0	10.2	10.0	10.4	10.1	10.2	10.9	11.7	12.9	10.8	9.6
France S504646Y	8.8	9.0	9.2	8.1	8.6	9.2	11.4	12.0	12.0	12.1	11.3	10.9	11.1	11.3	11.7	11.4	11.5	9.7
Cyprus S936406Y	8.7	8.4	8.6	9.7	10.6	10.9	11.1	11.1	9.6	8.0	9.2	10.8	13.7	12.9	11.2
Luxembourg S776542Y	15.3	15.8	16.4	16.0	14.8	14.9	15.2	15.3	14.6	13.0	13.6	12.9	13.0	13.4	13.9
Malta S160345Y	8.2	7.2	8.2	7.9	8.7	9.1	10.1	11.3	11.8	11.2	11.7	11.9	13.3	13.0	13.9
Netherlands S300326Y	15.3	16.2	13.6	12.3	12.7	12.1	11.9	11.8	11.6	11.4	11.4	10.7	10.4	11.4	11.5	11.9	11.6	11.9
Austria S194662Y	12.4	12.5	11.1	11.7	12.7	13.5	13.7	13.3	13.2	15.0	13.9	13.7	13.5	12.9	13.0	13.5	14.0	12.7
Portugal S703073Y	9.8	9.0	8.8	8.4	9.1	9.1	8.9	9.3	9.8	9.4	9.3	8.6	8.5	8.4	8.8	9.8	9.9	9.2
Slovenia S337752Y	6.9	7.4	7.4	7.3	7.3	7.3	7.5	7.8	8.0	8.2	8.7	9.1	9.2	9.0	9.0
Slovakia S522744Y	10.8	9.7	9.2	9.0	9.0	7.4	7.5	7.0	7.1	6.1	6.0	6.1	6.2	6.4	6.0
Finland S337376Y	16.9	15.1	16.8	17.3	18.9	18.4	18.9	18.5	21.1	19.0	18.8	17.8	17.5	17.5	17.3	17.6	17.5	16.3
Euro area S913107Y	11.9	12.1	11.6	11.1	11.6	11.8	12.1	12.5	12.6	12.2	11.8	11.4	11.3	11.5	12.1	12.4	12.2	11.3
Euro area excluding Italy . . S920738Y	11.4	11.3	11.0	10.4	10.9	10.9	11.7	12.0	12.3	11.7	11.4	11.0	10.9	11.2	11.6	11.9	11.6	10.7
Bulgaria S574561Y	11.8	12.8	11.2	8.6	7.6	6.9	7.4	6.3	6.5	5.8	5.5	5.5	6.6	6.5	6.0
Czech Republic S201997Y	9.6	8.3	8.8	8.3	8.5	8.3	8.8	9.1	9.6	9.6	9.2	9.2	9.4	8.0	7.5
Denmark S582991Y	29.0	30.1	30.6	30.7	30.7	30.3	29.9	30.1	30.3	29.3	29.1	29.4	30.2	31.7	30.5	29.9	29.7	30.1
Estonia S786636Y	10.9	9.2	9.2	10.4	9.8	7.7	7.2	7.5	8.0	7.9	7.0	7.2	7.7	7.9	7.6
Latvia S968045Y	7.1	7.0	7.5	8.0	7.7	7.3	7.6	7.8	7.6	7.9	7.9	8.5	9.2	9.7	7.1
Lithuania S617862Y	8.4	8.0	8.7	9.0	9.1	8.4	7.8	7.5	8.0	8.7	9.0	9.6	9.2	9.4	6.0
Hungary S724792Y	8.7	9.2	8.9	8.9	9.3	9.7	10.0	10.0	9.5	8.9	9.0	9.3	10.2	10.6	9.8
Poland S478108Y	11.7	11.3	11.1	10.8	7.7	7.2	6.3	6.7	6.5	6.5	7.0	7.5	8.6	8.6	7.4
Romania S892718Y	11.2	10.3	10.4	8.3	7.8	7.0	6.4	5.8	6.0	6.4	5.3	6.0	6.7	6.7	6.6
Sweden S091709Y	19.3	19.5	19.7	19.6	20.6	21.1	21.0	21.7	21.9	19.5	17.5	18.2	19.0	19.9	19.9	19.0	17.4	17.0
United Kingdom S707414Y	12.1	11.4	11.9	15.0	14.7	15.0	16.2	16.1	16.4	16.6	15.5	14.9	15.1	16.1	16.9	16.6	16.7	15.7
EU excluding euro area . . S933840Y	16.4	16.3	16.2	16.7	16.6	16.7	16.2	15.3	15.1	15.3	15.9	16.2	15.9	15.5	14.8
EU S986535Y	12.5	12.6	12.3	12.2	12.6	12.9	13.2	13.5	13.7	13.3	12.7	12.3	12.3	12.7	13.2	13.4	13.1	12.2
EU excluding Italy S782247Y	12.2	12.0	11.9	11.9	12.2	12.4	13.1	13.3	13.6	13.1	12.5	12.2	12.2	12.6	13.0	13.1	12.7	11.8
United States S880821Y	11.9	12.2	12.4	12.9	13.5	14.0	14.5	14.6	15.0	14.0	11.7	11.1	11.4	12.8	13.6	13.7	11.8
Japan S413980Y	9.8	9.8	8.6	8.3	8.8	9.3	8.0	7.6	7.6	8.3	9.1	9.5
Canada S738314Y	16.2	15.7	15.7	16.1	17.1	17.7	17.8	18.0	18.2	16.9	15.5	15.2	15.7	16.0	16.3	16.7	16.3

Indirect taxes

(as a percentage of GDP)

	1992	1993	1994	1995	1996	1997	1998	1999	2000	2001	2002	2003	2004	2005	2006	2007	2008	2009
Italy S201645Y	11.0	11.7	11.5	11.8	11.6	12.2	15.1	14.9	14.7	14.2	14.3	14.0	14.0	14.2	14.8	14.7	13.8	13.6
Belgium S406741Y	12.1	12.3	12.6	11.9	12.5	12.7	12.6	13.1	12.9	12.5	12.6	12.7	12.9	13.0	13.1	12.7	12.6	12.6
Germany S406400Y	12.4	12.7	13.1	11.1	11.2	11.2	11.4	12.0	11.9	11.7	11.7	11.8	11.8	11.8	12.1	12.6	12.5	12.6
Ireland S975307Y	15.2	14.4	15.3	13.4	13.5	13.3	12.9	13.0	13.1	12.0	12.2	12.3	13.0	13.5	14.0	13.3	12.3	11.0
Greece S998018Y	15.3	14.7	14.3	12.1	12.5	12.7	12.8	13.5	13.6	13.3	12.9	12.0	11.6	11.7	12.5	12.5	12.1	11.1
Spain S179175Y	10.8	10.1	10.6	10.0	10.0	10.3	10.9	11.4	11.4	11.0	11.2	11.5	11.9	12.2	12.3	11.7	9.9	8.7
France S520395Y	14.3	14.3	14.7	15.2	15.9	15.9	15.8	15.8	15.2	14.8	14.9	15.0	15.3	15.4	15.3	15.1	14.8	14.8
Cyprus S953793Y	11.4	11.0	10.2	11.1	10.7	12.4	13.0	13.3	16.4	16.8	16.9	17.6	19.4	18.4	15.0
Luxembourg S795162Y	15.3	15.8	16.1	11.0	11.1	12.1	12.5	12.7	13.5	13.1	12.7	12.3	13.3	13.2	12.5	12.4	11.8	11.9
Malta S178664Y	12.3	11.7	12.4	11.4	12.4	12.6	13.3	13.6	12.9	14.6	15.0	14.9	14.7	14.6	14.2
Netherlands S313148Y	12.3	12.5	12.4	10.7	11.1	11.2	11.4	11.9	11.7	12.2	12.1	12.1	12.4	12.4	12.6	12.5	12.1	11.9
Austria S219095Y	15.2	15.4	15.3	14.0	14.5	14.9	14.9	15.1	14.7	14.8	14.9	14.9	14.9	14.6	14.2	14.1	14.2	14.6
Portugal S719112Y	13.7	12.9	13.4	13.0	13.3	13.1	13.6	14.0	13.5	13.5	14.2	14.8	14.2	15.0	15.4	15.0	14.6	13.0
Slovenia S350210Y	15.5	15.7	15.3	16.0	16.6	15.8	15.6	15.9	16.0	15.7	15.5	14.9	14.5	14.1	14.3
Slovakia S537018Y	14.5	13.8	13.1	12.8	12.4	12.5	11.4	11.4	12.0	12.1	12.4	11.2	11.0	10.4	10.3
Finland S356873Y	14.7	14.5	14.2	13.5	13.7	14.3	14.0	14.0	13.5	13.1	13.4	14.0	13.8	13.8	13.7	13.0	13.0	13.4
Euro area S943962Y	12.7	12.9	13.1	12.3	12.5	12.6	13.3	13.5	13.3	13.0	13.1	13.1	13.2	13.4	13.5	13.5	13.0	12.8
Euro area excluding Italy S953697Y	13.0	13.1	13.4	12.3	12.6	12.7	12.9	13.2	13.0	12.7	12.8	12.9	13.1	13.2	13.3	13.2	12.8	12.6
Bulgaria S589224Y	12.8	13.5	12.7	13.5	13.7	15.0	14.6	14.4	15.8	17.5	18.7	19.4	18.5	18.1	16.6
Czech Republic S221602Y	12.3	12.1	11.5	11.0	11.5	11.3	11.0	10.8	11.1	11.6	11.5	10.9	11.2	11.0	11.4
Denmark S605129Y	16.6	16.9	17.3	16.8	17.2	17.4	18.1	18.1	17.0	17.2	17.4	17.2	17.4	17.7	17.9	17.8	17.1	16.8
Estonia S802124Y	13.1	13.4	13.7	12.5	11.7	12.3	12.3	12.5	12.1	12.1	13.1	13.3	13.5	12.1	15.0
Latvia S987489Y	14.1	13.0	13.9	15.0	13.7	12.3	11.8	11.2	12.1	11.7	12.4	12.8	12.2	10.8	10.6
Lithuania S631171Y	12.0	11.5	13.5	13.8	13.6	12.6	12.2	12.4	11.7	11.1	11.0	11.1	11.5	11.5	11.3
Hungary S754417Y	17.6	16.9	15.4	15.6	16.2	16.3	15.3	14.9	15.7	16.0	15.5	15.0	15.6	15.6	16.3
Poland S501811Y	14.2	14.4	13.9	13.1	13.6	12.6	12.5	13.2	13.2	12.9	13.6	14.2	14.1	14.2	12.8
Romania S913927Y	9.8	9.2	9.2	11.3	12.2	12.2	11.3	11.6	12.3	11.7	12.9	12.8	12.3	11.7	11.0
Sweden S112081Y	15.4	14.6	13.9	15.3	15.8	16.0	16.8	18.0	16.0	16.1	16.4	16.6	16.4	16.5	16.7	16.9	18.2	18.9
United Kingdom S719384Y	15.6	15.3	15.4	12.4	12.6	12.9	12.8	13.2	13.2	12.9	12.9	12.8	12.9	12.6	12.6	12.5	12.0	11.6
EU excluding euro area S965044Y	13.4	13.7	13.6	13.7	14.1	13.8	13.5	13.6	13.6	13.6	13.5	13.6	13.6	13.3	13.1
EU S010073Y	13.3	13.3	13.5	12.5	12.7	12.9	13.4	13.7	13.4	13.1	13.2	13.2	13.3	13.4	13.6	13.5	13.1	12.8
EU excluding Italy S797708Y	13.6	13.6	13.8	12.6	12.9	13.0	13.1	13.5	13.2	13.0	13.0	13.1	13.2	13.3	13.4	13.3	13.0	12.7
United States S901790Y	7.6	7.5	7.7	7.5	7.4	7.3	7.3	7.2	7.1	7.1	7.2	7.2	7.3	7.4	7.4	7.3	7.3
Japan S437186Y	8.0	7.9	8.5	8.6	8.6	8.6	8.4	8.4	8.3	8.4	8.7	8.4
Canada S754200Y	14.9	14.8	14.3	14.1	14.0	14.0	13.9	13.6	12.9	13.0	13.1	13.0	12.8	12.6	12.2	11.9	11.4

Social security contributions

(as a percentage of GDP)

	1992	1993	1994	1995	1996	1997	1998	1999	2000	2001	2002	2003	2004	2005	2006	2007	2008	2009
Italy S153295Y	14.7	14.9	14.6	14.4	14.7	15.0	12.6	12.5	12.4	12.3	12.5	12.6	12.6	12.8	12.8	13.3	13.8	14.1
Belgium S373086Y	17.8	18.1	17.5	16.4	16.4	16.3	16.3	16.3	16.0	16.3	16.5	16.4	16.1	15.8	15.6	15.7	16.1	16.7
Germany S374045Y	17.8	18.4	18.9	18.3	19.0	19.2	18.9	18.7	18.3	18.2	18.2	18.3	17.9	17.7	17.2	16.5	16.4	17.1
Ireland S944292Y	5.3	5.3	5.1	6.7	6.3	5.9	5.5	5.6	5.7	5.8	5.7	5.8	6.0	6.1	6.3	6.5	6.9	7.6
Greece S951517Y	11.0	11.9	12.1	11.2	11.5	11.9	12.1	12.2	12.5	12.6	13.6	13.8	13.3	13.4	12.9	13.4	13.4	12.8
Spain S143558Y	14.0	14.3	14.0	12.7	12.9	12.8	12.7	12.8	12.9	13.0	13.0	13.0	13.0	12.9	12.9	13.0	13.1	13.4
France S488177Y	20.9	21.1	20.7	20.3	20.5	20.0	17.9	18.1	17.9	17.9	18.0	18.2	18.0	18.1	18.2	17.9	18.0	18.3
Cyprus S914845Y	6.5	6.6	6.8	6.9	6.6	6.5	6.8	6.7	7.0	7.7	8.3	7.8	7.5	7.7	9.3
Luxembourg S760438Y	11.0	10.9	11.1	11.2	11.0	10.9	11.8	11.8	11.7	11.6	11.3	10.7	10.7	10.9	12.1
Malta S147558Y	7.3	7.7	8.1	7.4	7.5	7.5	8.4	8.0	8.0	8.0	7.9	7.6	7.3	7.6	7.6
Netherlands S283873Y	17.8	17.9	18.4	17.1	16.4	16.2	16.1	16.6	16.4	14.7	14.3	14.7	14.9	13.9	14.8	14.3	15.2	14.7
Austria S172202Y	15.8	16.5	16.8	17.2	17.3	17.3	17.2	17.2	16.8	16.7	16.4	16.5	16.3	16.2	16.1	15.9	15.9	16.5
Portugal S684351Y	11.1	11.7	11.5	10.5	10.5	10.7	10.9	10.8	11.2	11.4	11.7	12.2	12.2	12.5	12.5	12.7	12.9	13.7
Slovenia S326650Y	17.0	15.2	14.5	14.6	14.3	14.5	14.7	14.5	14.4	14.5	14.5	14.3	13.9	14.3	15.4
Slovakia S499204Y	15.1	16.0	15.1	15.0	14.1	14.2	14.4	14.7	14.0	13.3	12.8	11.9	11.8	12.1	12.8
Finland S321934Y	14.5	15.0	15.8	14.7	14.2	13.4	13.0	13.0	12.1	12.2	12.0	11.9	11.8	12.2	12.4	12.0	12.2	13.0
Euro area S977512Y	17.4	17.7	17.7	17.0	17.2	17.1	16.1	16.0	15.8	15.6	15.6	15.7	15.5	15.4	15.3	15.1	15.3	15.7
Euro area excluding Italy . . S001425Y	17.8	18.2	18.3	17.5	17.7	17.6	16.9	16.8	16.5	16.3	16.3	16.4	16.2	16.0	15.8	15.5	15.6	16.0
Bulgaria S557695Y	12.0	10.8	10.0	9.4	10.3	11.0	10.0	9.5	10.6	10.5	10.3	8.7	8.7	8.1	8.0
Czech Republic S184305Y	14.4	14.2	14.6	14.1	14.1	14.2	14.2	14.9	15.1	16.1	16.2	16.3	16.3	16.2	15.4
Denmark S569172Y	2.4	2.5	2.8	2.1	2.0	2.0	2.0	2.5	2.6	2.6	2.1	2.1	2.1	2.0	1.9	1.9	1.8	1.9
Estonia S773043Y	12.3	11.7	11.4	11.2	11.1	11.0	10.7	11.0	10.7	10.4	10.4	10.3	10.9	11.9	13.4
Latvia S954776Y	12.0	10.9	10.7	10.8	10.9	10.1	9.4	9.5	9.1	8.9	8.6	9.0	8.9	8.6	8.8
Lithuania S601601Y	7.2	7.7	8.4	9.0	9.2	9.4	9.0	8.6	8.5	8.7	8.4	8.7	8.9	9.4	12.0
Hungary S702819Y	15.0	13.9	14.2	14.0	13.2	13.1	12.9	12.9	12.7	12.3	12.6	12.6	13.6	13.8	13.0
Poland S456361Y	11.3	11.6	11.7	11.6	13.7	12.9	13.4	12.9	12.8	12.3	12.3	12.2	12.0	11.4	11.3
Romania S873877Y	8.3	7.8	7.3	9.4	11.4	11.4	11.2	11.1	9.9	9.7	10.3	10.3	10.5	10.1	10.4
Sweden S072170Y	13.9	13.4	13.4	12.8	13.8	13.6	13.6	12.0	13.8	14.3	14.1	13.8	13.5	13.4	12.8	12.8	12.0	11.9
United Kingdom S693235Y	6.1	6.1	6.2	7.4	7.3	7.4	7.3	7.5	7.6	7.7	7.4	7.8	8.1	8.4	8.3	8.3	8.4	8.6
EU excluding euro area . . S013962Y	8.3	8.5	8.4	8.4	8.5	8.7	8.9	8.7	8.9	9.0	9.2	9.2	9.2	9.3	9.3
EU S967966Y	15.4	15.7	15.7	15.2	15.3	15.1	14.2	14.2	13.9	13.9	13.8	14.0	13.8	13.8	13.7	13.5	13.7	14.2
EU excluding Italy S754260Y	15.4	15.7	15.8	15.3	15.4	15.1	14.5	14.4	14.2	14.1	14.0	14.2	14.0	13.9	13.8	13.5	13.7	14.2
United States S870398Y	7.2	7.2	7.2	7.2	7.1	7.1	7.1	7.1	7.1	7.2	7.1	7.0	7.0	6.9	6.9	6.8	6.9
Japan S400980Y	9.5	9.7	9.9	10.0	10.0	10.4	10.5	10.9	10.4	10.6	10.8	10.9
Canada S730785Y	5.0	5.0	5.0	5.0	4.8	4.8	4.8	4.7	4.6	4.8	5.0	5.0	4.8	4.8	4.8	4.6	4.4

Total expenditure (Regulation EC 1500/2000)

(as a percentage of GDP)

	1992	1993	1994	1995	1996	1997	1998	1999	2000	2001	2002	2003	2004	2005	2006	2007	2008	2009
Italy S357242Y	55.3	56.3	53.5	52.5	52.5	50.3	49.0	48.1	46.2	48.0	47.2	48.3	47.7	48.1	48.7	47.9	48.9	51.9
Italy - Traditional account. S312773Y	55.6	56.6	53.8	52.7	52.6	50.3	49.0	48.1	46.2	48.1	47.4	48.6	48.0	48.5	49.2	48.4	49.4	52.5
Belgium S519590Y	52.2	52.5	51.2	50.4	50.2	49.1	49.1	49.8	51.0	49.3	52.1	48.5	48.4	50.0	54.2
Germany S531577Y	48.3	49.3	48.4	48.0	48.1	45.1	47.6	48.1	48.5	47.1	46.8	45.3	43.7	43.7	47.6
Ireland S111425Y	41.1	39.1	37.0	34.4	34.0	31.4	33.3	33.5	33.2	33.5	34.0	34.4	36.6	42.0	48.4
Greece S112222Y	45.7	44.1	44.9	44.3	44.4	46.6	45.3	45.0	44.7	45.5	43.7	42.9	44.7	46.8	50.5
Spain S288441Y	44.4	43.2	41.6	41.1	39.9	39.1	38.6	38.9	38.4	38.9	38.4	38.4	39.2	41.1	45.9
France S664973Y	54.4	54.5	54.1	52.7	52.6	51.6	51.6	52.6	53.3	53.2	53.3	52.7	52.3	52.8	55.6
Cyprus S137386Y	33.1	35.1	36.1	36.7	36.8	37.0	38.2	40.2	45.0	42.8	43.6	43.4	42.2	42.6	46.4
Luxembourg S921841Y	39.7	41.1	40.7	41.1	39.2	37.6	38.1	41.5	41.8	42.6	41.5	38.3	36.2	37.2	42.4
Malta S256142Y	39.7	42.6	42.9	43.0	43.0	41.0	43.1	43.2	47.8	45.5	44.8	43.7	42.4	44.8	44.3
Netherlands S419325Y	51.6	49.4	47.5	46.7	46.0	44.2	45.3	46.2	47.1	46.1	44.8	45.5	45.5	45.9	51.6
Austria S341540Y	56.2	55.8	53.5	53.8	53.5	52.0	51.5	50.8	51.4	53.9	50.1	49.4	48.5	48.9	51.8
Portugal S841563Y	43.4	44.1	43.2	42.8	43.2	43.1	44.4	44.2	45.4	46.5	47.7	46.3	45.7	46.1	51.0
Slovenia S455538Y	52.6	44.5	44.8	45.7	46.5	46.7	47.6	46.3	46.4	45.8	45.2	44.5	42.4	44.3	49.9
Slovakia S645755Y	48.6	53.7	49.0	45.8	48.1	52.2	44.5	45.1	40.2	37.7	38.0	36.9	34.4	34.8	40.8
Finland S461095Y	61.4	60.0	56.5	52.9	51.7	48.3	47.8	48.9	50.0	49.8	50.0	48.9	47.3	49.4	55.3
Euro area S029982Y	50.6	50.7	49.4	48.5	48.1	46.3	47.3	47.6	48.0	47.5	47.3	46.6	46.0	46.8	50.7
Euro area excluding Italy . S042055Y	50.2	50.3	49.2	48.4	48.1	46.3	47.1	47.6	48.0	47.4	47.1	46.2	45.6	46.4	50.5
Bulgaria S694475Y	39.3	41.8	42.6	40.3	40.3	40.3	39.7	39.3	36.5	41.5	37.3	40.7
Czech Republic S332257Y	54.5	42.6	43.2	43.2	42.3	41.8	44.4	46.3	47.3	45.2	45.0	43.8	42.5	42.9	46.2
Denmark S732769Y	59.3	58.9	56.7	56.3	55.4	53.6	54.1	54.4	54.9	54.3	52.6	51.5	50.9	51.9	58.5
Estonia S918835Y	41.3	39.5	37.4	39.2	40.1	36.1	34.8	35.8	34.8	34.0	33.6	34.0	34.8	39.9	45.4
Latvia S078989Y	38.6	36.9	36.3	40.2	41.8	37.3	34.6	35.6	34.8	35.8	35.5	38.1	35.7	38.6	43.0
Lithuania S733959Y	34.4	36.4	49.6	40.1	39.9	39.1	36.8	34.7	33.2	33.3	33.3	33.6	34.8	37.4	43.0
Hungary S895188Y	56.2	51.5	50.5	52.0	49.1	46.8	47.2	51.2	49.4	48.7	50.1	51.9	49.8	49.2	49.8
Poland S642387Y	47.7	51.0	46.4	44.3	42.7	41.1	43.8	44.3	44.7	42.6	43.4	43.9	42.2	43.3	44.5
Romania S038230Y	35.9	34.7	34.9	35.2	39.2	38.5	36.0	35.0	33.5	33.5	33.5	35.3	36.0	37.6	40.4
Sweden S271698Y	65.2	62.9	60.8	59.0	58.4	55.6	55.6	56.5	56.7	55.3	55.0	54.0	52.5	53.1	56.3
United Kingdom S840831Y	43.9	42.3	40.5	39.5	38.9	36.8	40.2	41.1	42.1	42.9	44.1	44.0	44.2	47.4	51.7
EU excluding euro area . . S052404Y	48.9	47.4	44.9	43.6	43.0	40.8	43.2	44.1	44.9	44.9	45.5	45.3	44.9	46.9	50.8
EU S128446Y	50.3	50.0	48.3	47.3	46.8	44.8	46.2	46.6	47.2	46.8	46.8	46.3	45.7	46.9	50.7
EU excluding Italy S924412Y	49.9	49.6	48.0	47.0	46.6	44.6	45.9	46.6	47.1	46.7	46.6	45.9	45.4	46.6	50.6
United States S010606Y
Japan S569476Y
Canada S880406Y

Total expenditure, excluding interest payments (Regulation EC 1500/2000)

(as a percentage of GDP)

	1992	1993	1994	1995	1996	1997	1998	1999	2000	2001	2002	2003	2004	2005	2006	2007	2008	2009
Italy S258496Y	43.1	43.6	42.1	40.9	40.9	41.0	41.1	41.5	39.8	41.7	41.7	43.1	42.9	43.5	44.1	42.9	43.7	47.3
Italy - Traditional account . S299380Y	43.4	44.0	42.4	41.2	41.1	41.1	41.1	41.5	39.9	41.8	41.9	43.4	43.3	43.9	44.6	43.4	44.2	47.8
Belgium S457990Y	43.3	44.0	43.5	43.1	43.3	42.5	42.7	44.1	45.8	44.6	47.9	44.6	44.5	46.2	50.5
Germany S455922Y	44.8	45.8	45.0	44.7	44.9	42.0	44.5	45.2	45.5	44.3	44.0	42.5	40.9	41.0	44.9
Ireland S036234Y	35.8	34.6	32.9	31.1	31.7	29.3	31.8	32.1	32.0	32.4	32.9	33.4	35.5	40.6	46.3
Greece S051438Y	34.5	33.6	35.6	36.2	37.0	39.3	38.8	39.5	39.8	40.5	39.2	38.7	40.6	42.2	45.4
Spain S234357Y	39.3	38.0	36.9	36.9	36.4	35.9	35.6	36.2	36.0	36.8	36.7	36.7	37.6	39.5	44.1
France S579339Y	51.0	50.9	50.6	49.3	49.6	48.7	48.5	49.7	50.4	50.4	50.7	50.1	49.6	49.9	53.3
Cyprus S055632Y	31.1	32.7	33.6	33.7	33.8	33.6	34.8	37.1	41.6	39.5	40.1	40.2	39.1	39.8	43.9
Luxembourg S847812Y	39.3	40.7	40.2	40.6	38.9	37.3	37.8	41.3	41.6	42.4	41.4	38.1	36.0	36.9	41.9
Malta S213689Y	37.6	40.3	40.2	39.8	39.3	37.4	39.7	39.6	44.4	41.9	41.1	40.2	39.1	41.5	41.1
Netherlands S344076Y	45.9	44.1	42.6	42.0	41.7	40.5	42.2	43.4	44.5	43.6	42.4	43.3	43.3	43.8	49.4
Austria S269701Y	52.2	51.9	49.9	50.2	50.2	48.5	48.1	47.6	48.4	51.0	47.2	46.7	45.8	46.3	49.0
Portugal S770101Y	37.6	39.2	39.3	39.6	40.2	40.1	41.4	41.4	42.7	43.8	45.1	43.5	42.9	43.2	48.1
Slovenia S396481Y	50.5	42.4	42.4	43.5	44.1	44.3	45.2	44.1	44.4	44.1	43.6	43.1	41.1	43.2	48.5
Slovakia S585036Y	46.3	51.1	46.6	43.3	44.7	48.1	40.5	41.5	37.7	35.5	36.3	35.5	33.0	33.6	39.3
Finland S407058Y	57.5	55.9	52.3	49.4	48.7	45.5	45.2	46.8	48.3	48.3	48.5	47.5	45.8	48.0	54.2
Euro area S069181Y	45.1	45.2	44.4	43.9	44.1	42.4	43.5	44.1	44.7	44.4	44.4	43.8	43.1	43.8	47.9
Euro area excluding Italy . S087396Y	46.0	46.1	45.2	44.6	44.6	42.9	43.8	44.6	45.1	44.7	44.6	43.7	43.1	43.9	48.0
Bulgaria S628476Y	35.1	38.0	38.5	36.9	38.0	38.3	37.9	37.6	35.1	40.4	36.5	39.9
Czech Republic S268447Y	53.4	41.4	42.1	42.0	41.3	41.0	43.3	45.1	46.2	44.0	43.8	42.6	41.4	41.8	44.8
Denmark S662366Y	53.4	53.2	51.7	51.8	51.4	50.0	50.8	51.4	52.2	52.0	50.7	49.8	49.3	50.4	56.4
Estonia S853841Y	40.8	39.1	37.1	38.7	39.9	35.9	34.7	35.6	34.6	33.8	33.4	33.8	34.6	39.6	45.0
Latvia S025152Y	37.6	35.6	35.4	39.4	41.1	36.4	33.7	34.9	34.1	35.0	35.0	37.7	35.4	38.0	41.3
Lithuania S681118Y	34.1	35.5	48.9	39.0	38.5	37.3	35.3	33.4	31.9	32.4	32.5	32.8	34.1	36.8	42.0
Hungary S806317Y	47.3	42.4	41.6	44.5	42.2	41.8	42.6	47.2	45.4	44.3	46.0	48.0	45.7	45.1	45.1
Poland S558309Y	42.0	46.4	41.9	40.3	39.8	38.1	40.7	41.4	41.7	39.9	40.6	41.2	39.9	41.1	41.9
Romania S974053Y	34.2	32.8	30.5	31.3	34.2	34.5	32.6	32.5	31.9	32.1	32.4	34.5	35.3	36.8	38.9
Sweden S183826Y	59.8	57.6	55.7	54.3	54.6	52.1	52.7	53.7	54.7	53.7	53.3	52.4	50.7	51.4	55.4
United Kingdom S777302Y	40.3	38.7	36.9	36.0	36.0	34.0	37.8	39.1	40.1	41.0	42.0	42.0	42.0	45.1	49.7
EU excluding euro area . . S099391Y	44.7	43.3	41.0	39.9	39.9	37.9	40.6	41.8	42.8	42.9	43.4	43.3	42.8	44.9	48.9
EU S073003Y	45.0	44.8	43.6	43.0	43.0	41.2	42.7	43.5	44.2	44.0	44.1	43.6	43.0	44.1	48.1
EU excluding Italy S848792Y	45.7	45.4	44.0	43.2	43.2	41.4	42.9	43.8	44.4	44.2	44.2	43.6	43.0	44.2	48.2
United States S954253Y
Japan S499519Y
Canada S812801Y

Current expenditure (Regulation EC 1500/2000)

(as a percentage of GDP)

	1992	1993	1994	1995	1996	1997	1998	1999	2000	2001	2002	2003	2004	2005	2006	2007	2008	2009
Italy S379341Y	50.9	52.2	49.9	48.0	48.8	46.9	45.2	44.2	43.6	43.8	43.6	43.9	43.7	44.0	43.7	43.8	45.2	47.6
Italy - Traditional account . S071647Y	51.2	52.5	50.2	48.3	48.9	47.0	45.2	44.2	43.6	43.9	43.8	44.2	44.0	44.4	44.2	44.3	45.7	48.2
Belgium S538586Y	49.2	49.6	48.0	47.4	46.9	45.9	46.6	47.2	47.9	46.8	46.7	45.9	45.5	47.2	50.6
Germany S546671Y	44.7	46.1	45.4	44.9	44.9	44.4	44.2	44.9	45.3	44.2	44.0	42.7	41.1	40.9	44.6
Ireland S131518Y	37.2	35.5	33.4	30.8	28.2	26.8	27.9	28.4	28.6	29.1	29.4	29.8	31.0	35.0	40.7
Greece S128362Y	41.4	40.2	39.4	38.6	38.6	40.2	39.5	39.7	39.1	39.4	39.3	38.9	40.5	42.3	45.9
Spain S302469Y	38.5	38.3	37.0	36.2	35.0	34.5	33.8	33.8	33.5	33.6	33.5	33.3	33.8	35.7	40.0
France S681026Y	49.7	50.3	50.0	48.8	48.4	47.7	47.7	48.8	49.4	49.2	49.1	48.6	48.1	48.6	51.3
Cyprus S161096Y	28.9	31.4	32.2	33.3	33.6	33.5	34.8	36.7	41.0	38.6	40.0	39.7	38.5	39.1	41.5
Luxembourg S941695Y	34.5	35.1	36.4	35.5	34.0	32.7	34.3	35.4	35.9	36.7	35.5	33.0	31.6	32.8	37.4
Malta S271215Y	36.1	38.1	38.3	38.0	37.7	36.3	38.8	38.7	39.8	41.0	39.9	39.2	38.6	41.8	41.2
Netherlands S437075Y	47.7	46.1	44.3	43.5	42.6	41.2	41.3	42.0	42.9	42.5	41.3	42.2	41.9	41.9	46.2
Austria S358530Y	51.5	51.1	49.6	49.7	49.7	48.6	47.9	47.4	48.2	47.2	46.8	46.2	45.2	45.8	49.0
Portugal S856786Y	38.1	38.2	36.7	36.8	37.5	38.2	39.0	39.9	41.2	42.0	43.4	42.9	42.3	43.2	47.0
Slovenia S476781Y	40.9	40.3	40.9	40.8	41.2	42.0	42.9	42.3	41.8	41.3	41.2	40.2	37.3	38.6	43.7
Slovakia S665397Y	40.9	43.4	41.7	39.6	39.7	40.1	39.3	38.6	37.1	34.9	34.2	34.0	31.7	31.5	36.9
Finland S473157Y	55.9	55.7	53.2	49.7	48.2	45.5	44.9	45.8	47.0	46.7	47.1	46.3	44.6	46.5	52.1
Euro area S111124Y	46.3	46.9	45.8	44.8	44.2	43.5	43.4	43.8	44.1	43.6	43.5	42.8	42.3	43.0	46.5
Euro area excluding Italy . S131364Y	45.9	46.4	45.5	44.7	44.2	43.5	43.3	43.8	44.2	43.6	43.4	42.7	41.9	42.6	46.3
Bulgaria S708893Y	49.6	50.0	38.2	34.8	37.6	38.6	36.4	36.7	36.9	35.9	35.0	32.2	33.4	31.7	35.5
Czech Republic S352624Y	34.7	34.4	35.0	33.9	35.4	35.6	35.8	37.4	39.1	37.8	37.5	36.8	36.3	36.4	39.7
Denmark S754352Y	56.8	56.3	54.2	53.9	53.1	51.3	51.9	52.3	52.9	52.1	50.5	49.2	48.6	49.1	55.7
Estonia S933714Y	36.0	34.6	32.6	33.5	35.5	32.0	30.3	30.1	30.1	30.2	29.6	28.9	28.9	33.4	40.0
Latvia S092282Y	35.9	33.7	34.3	36.5	37.5	33.6	31.2	32.1	32.0	31.6	30.6	31.1	28.9	33.0	38.0
Lithuania S746466Y	29.9	31.5	34.6	36.4	36.4	34.2	32.4	30.7	29.7	29.3	29.6	29.1	28.7	32.0	38.6
Hungary S916888Y	49.9	46.9	45.2	44.2	44.0	40.9	40.7	42.2	43.9	43.9	44.7	45.7	44.3	45.1	46.0
Poland S662208Y	43.7	42.6	41.8	39.5	38.8	38.2	39.8	40.2	40.2	38.7	39.0	39.0	37.3	37.8	38.2
Romania S054352Y	31.3	30.0	31.7	32.4	36.1	34.0	31.9	30.5	28.6	28.5	28.6	28.6	29.2	30.7	34.2
Sweden S304653Y	60.8	59.4	57.2	56.6	55.1	52.7	52.5	53.2	53.6	52.3	51.7	50.8	49.3	49.8	52.5
United Kingdom S856436Y	40.7	39.8	38.6	37.6	37.0	37.3	37.9	38.8	39.5	40.4	41.4	41.2	41.3	42.3	46.6
EU excluding euro area . . S141167Y	45.0	44.0	42.2	41.1	40.5	40.0	40.4	41.1	41.8	41.9	42.3	41.8	41.3	42.0	45.8
EU S137138Y	46.0	46.2	44.9	43.9	43.3	42.6	42.6	43.1	43.6	43.2	43.2	42.6	42.0	42.8	46.3
EU excluding Italy S947878Y	45.7	45.8	44.6	43.7	43.2	42.4	42.4	43.0	43.5	43.1	43.0	42.4	41.8	42.4	46.2
United States S029739Y	32.5	31.9	30.9	30.9	30.3	29.3	28.5	28.0	27.7	28.6	29.3	29.6	29.4	29.6	29.6	30.1	31.5
Japan S587947Y	27.1	27.1	28.2	29.6	29.8	30.4	31.2	31.2	30.7	30.7	30.6	30.8
Canada S897447Y	46.8	46.0	43.6	42.3	40.7	38.5	38.6	36.7	35.3	36.1	35.3	35.3	34.0	33.2	33.2	32.9	33.1

Current expenditure, excluding interest payments (Regulation EC 1500/2000)

(as a percentage of GDP)

	1992	1993	1994	1995	1996	1997	1998	1999	2000	2001	2002	2003	2004	2005	2006	2007	2008	2009
Italy S266039Y	38.7	39.5	38.6	36.4	37.2	37.6	37.3	37.6	37.2	37.5	38.1	38.8	39.0	39.4	39.1	38.8	40.0	42.9
Italy - Traditional account . S282887Y	39.0	39.8	38.9	36.7	37.4	37.7	37.3	37.6	37.3	37.6	38.3	39.1	39.3	39.8	39.5	39.3	40.5	43.5
Belgium S464541Y	40.3	41.2	40.3	40.1	40.1	39.3	40.2	41.5	42.6	42.1	42.5	42.0	41.7	43.4	46.9
Germany S466222Y	41.2	42.6	42.0	41.6	41.8	41.3	41.2	42.0	42.4	41.4	41.2	39.9	38.3	38.2	41.9
Ireland S041840Y	31.9	31.1	29.3	27.5	25.9	24.8	26.3	27.0	27.3	28.0	28.3	28.8	30.0	33.6	38.6
Greece S059049Y	30.1	29.7	30.1	30.4	31.2	32.9	33.0	34.2	34.2	34.5	34.8	34.8	36.4	37.7	40.8
Spain S242192Y	33.3	33.1	32.3	32.0	31.6	31.3	30.8	31.1	31.2	31.6	31.7	31.7	32.2	34.1	38.2
France S588452Y	46.2	46.7	46.5	45.5	45.4	44.8	44.7	45.9	46.5	46.4	46.5	46.1	45.5	45.7	49.0
Cyprus S065699Y	26.9	29.0	29.7	30.3	30.6	30.2	31.4	33.5	37.6	35.3	36.5	36.4	35.5	36.3	39.0
Luxembourg S857529Y	34.1	34.7	36.0	35.1	33.6	32.4	34.0	35.1	35.7	36.5	35.4	32.9	31.4	32.5	36.9
Malta S218427Y	34.0	35.9	35.6	34.7	34.0	32.7	35.4	35.1	36.4	37.4	36.2	35.7	35.2	38.5	38.0
Netherlands S350266Y	42.1	40.8	39.4	38.8	38.4	37.6	38.1	39.2	40.3	40.1	38.9	40.0	39.7	39.8	43.9
Austria S277603Y	47.5	47.3	45.9	46.1	46.4	45.2	44.6	44.2	45.2	44.4	43.9	43.4	42.5	43.3	46.3
Portugal S779254Y	32.3	33.2	32.9	33.6	34.5	35.2	36.0	37.1	38.5	39.3	40.8	40.1	39.4	40.3	44.2
Slovenia S403015Y	38.7	38.2	38.5	38.6	38.8	39.6	40.6	40.1	39.8	39.6	39.6	38.8	36.0	37.5	42.3
Slovakia S593020Y	38.5	40.9	39.3	37.1	36.3	36.0	35.3	35.1	34.6	32.7	32.5	32.5	30.3	30.3	35.4
Finland S412405Y	51.9	51.5	49.0	46.2	45.2	42.7	42.2	43.7	45.2	45.2	45.6	44.9	43.1	45.1	50.9
Euro area S154622Y	40.8	41.3	40.8	40.2	40.2	39.6	39.6	40.3	40.9	40.5	40.5	40.0	39.3	40.1	43.7
Euro area excluding Italy . S161815Y	41.7	42.2	41.5	40.9	40.8	40.1	40.0	40.8	41.3	40.9	40.8	40.1	39.4	40.1	43.8
Bulgaria S635472Y	35.5	28.9	29.9	30.5	33.8	34.5	33.1	34.4	34.9	34.1	33.3	30.8	32.3	30.9	34.7
Czech Republic S275898Y	33.7	33.2	33.9	32.8	34.3	34.7	34.8	36.2	37.9	36.7	36.4	35.7	35.2	35.3	38.4
Denmark S671559Y	50.8	50.7	49.2	49.4	49.1	47.7	48.5	49.2	50.2	49.7	48.6	47.5	47.1	47.7	53.7
Estonia S860292Y	35.5	34.2	32.3	32.9	35.2	31.7	30.2	29.9	29.9	29.9	29.4	28.7	28.7	33.2	39.6
Latvia S030521Y	35.0	32.3	33.4	35.7	36.8	32.6	30.3	31.4	31.3	30.8	30.0	30.6	28.6	32.4	36.4
Lithuania S690080Y	29.5	30.6	33.8	35.3	34.9	32.5	30.9	29.4	28.4	28.4	28.8	28.3	28.0	31.3	37.5
Hungary S817216Y	41.0	37.8	36.2	36.7	37.1	35.8	36.1	38.3	39.8	39.6	40.6	41.8	40.3	40.9	41.3
Poland S567797Y	38.0	38.0	37.3	35.5	35.9	35.1	36.6	37.3	37.2	36.0	36.2	36.4	35.0	35.6	35.6
Romania S981942Y	29.6	28.1	27.2	28.5	31.0	30.1	28.5	28.0	27.0	27.0	27.5	27.8	28.4	30.0	32.7
Sweden S195833Y	55.4	54.2	52.1	51.9	51.2	49.3	49.7	50.4	51.6	50.7	50.1	49.2	47.5	48.1	51.6
United Kingdom S785277Y	37.1	36.2	35.1	34.2	34.2	34.6	35.6	36.8	37.6	38.4	39.3	39.1	39.1	40.0	44.6
EU excluding euro area . . S170015Y	40.8	39.9	38.2	37.3	37.4	37.1	37.8	38.9	39.7	39.9	40.2	39.8	39.3	40.0	43.9
EU S080460Y	40.8	41.0	40.2	39.5	39.5	39.0	39.1	39.9	40.6	40.4	40.4	39.9	39.3	40.0	43.7
EU excluding Italy S858617Y	41.4	41.6	40.6	39.9	39.8	39.2	39.4	40.2	40.8	40.6	40.6	40.1	39.4	40.1	43.8
United States S922310Y	27.7	27.4	26.5	26.3	25.8	25.0	24.4	24.3	24.2	25.3	26.5	27.1	27.0	27.0	26.9	27.2	28.8
Japan S002159Y	23.6	23.7	24.7	26.1	26.5	27.3	28.2	28.4	28.2	28.3	28.1	28.4
Canada S326823Y	37.5	36.8	34.6	32.8	31.6	30.1	30.4	29.1	28.2	29.5	29.5	29.9	29.0	28.6	28.8	28.7	29.2

Interest payments

(as a percentage of GDP)

	1992	1993	1994	1995	1996	1997	1998	1999	2000	2001	2002	2003	2004	2005	2006	2007	2008	2009
Italy S221647Y	12.2	12.7	11.4	11.6	11.5	9.3	7.9	6.6	6.3	6.3	5.5	5.1	4.7	4.6	4.6	5.0	5.2	4.7
Belgium S424578Y	10.6	10.6	9.9	8.9	8.4	7.7	7.3	6.8	6.6	6.4	5.7	5.3	4.7	4.2	3.9	3.8	3.8	3.7
Germany S421703Y	3.2	3.2	3.3	3.5	3.5	3.4	3.4	3.1	3.2	3.1	2.9	3.0	2.8	2.8	2.8	2.8	2.7	2.6
Ireland S008536Y	6.7	6.3	5.6	5.3	4.5	4.1	3.3	2.3	2.0	1.5	1.4	1.3	1.2	1.1	1.0	1.0	1.4	2.1
Greece S021613Y	11.5	12.6	13.9	11.2	10.5	9.3	8.2	7.4	7.3	6.5	5.5	4.9	4.9	4.4	4.1	4.1	4.6	5.1
Spain S200044Y	4.3	5.0	4.7	5.1	5.2	4.7	4.2	3.5	3.2	3.0	2.7	2.3	2.0	1.8	1.6	1.6	1.6	1.8
France S541905Y	3.2	3.3	3.5	3.5	3.6	3.5	3.3	3.0	2.9	3.0	2.9	2.8	2.7	2.6	2.5	2.7	2.9	2.3
Cyprus S975951Y	2.0	2.4	2.5	3.1	3.0	3.4	3.4	3.2	3.4	3.3	3.5	3.3	3.0	2.8	2.5
Luxembourg S817353Y	0.3	0.3	0.3	0.4	0.4	0.4	0.4	0.3	0.3	0.3	0.3	0.2	0.2	0.2	0.2	0.2	0.3	0.5
Malta S189908Y	2.0	2.2	2.7	3.2	3.7	3.6	3.4	3.6	3.4	3.7	3.7	3.5	3.3	3.3	3.2
Netherlands S322697Y	6.0	6.0	5.7	5.6	5.3	4.9	4.7	4.3	3.7	3.2	2.8	2.6	2.5	2.3	2.2	2.2	2.1	2.3
Austria S236619Y	4.1	4.2	3.9	4.0	3.9	3.6	3.6	3.4	3.5	3.4	3.1	3.0	2.9	2.9	2.8	2.7	2.5	2.7
Portugal S740310Y	7.0	6.0	6.1	5.8	5.0	3.9	3.2	3.0	3.0	3.0	2.8	2.7	2.6	2.6	2.7	2.8	2.9	2.8
Slovenia S368845Y	2.1	2.1	2.4	2.2	2.4	2.4	2.4	2.2	2.0	1.7	1.6	1.4	1.3	1.1	1.4
Slovakia S551845Y	2.4	2.5	2.4	2.5	3.4	4.1	4.0	3.6	2.5	2.2	1.7	1.5	1.4	1.2	1.5
Finland S375805Y	2.6	4.5	5.0	3.9	4.2	4.2	3.5	3.0	2.8	2.7	2.1	1.7	1.6	1.5	1.4	1.5	1.4	1.2
Euro area S183087Y	5.3	5.5	5.4	5.5	5.5	4.9	4.5	4.0	3.9	3.8	3.5	3.3	3.1	2.9	2.9	2.9	3.0	2.8
Euro area excluding Italy . . S193509Y	4.1	4.2	4.3	4.3	4.2	4.0	3.8	3.5	3.4	3.3	3.0	2.9	2.7	2.6	2.5	2.5	2.5	2.5
Bulgaria S602404Y	14.1	21.1	8.3	4.3	3.8	4.0	3.3	2.3	2.0	1.8	1.7	1.4	1.0	0.8	0.8
Czech Republic S237267Y	1.0	1.2	1.1	1.2	1.0	0.8	1.0	1.2	1.2	1.2	1.2	1.1	1.1	1.1	1.3
Denmark S621830Y	6.6	7.3	6.7	5.9	5.7	5.0	4.5	4.0	3.6	3.3	3.1	2.7	2.3	1.9	1.6	1.6	1.5	2.0
Estonia S819098Y	0.5	0.4	0.3	0.5	0.3	0.2	0.1	0.2	0.2	0.2	0.2	0.2	0.2	0.2	0.3
Latvia S000226Y	0.9	1.4	0.9	0.7	0.7	1.0	0.9	0.7	0.7	0.7	0.5	0.4	0.3	0.6	1.6
Lithuania S645520Y	0.3	0.8	0.7	1.1	1.5	1.7	1.5	1.3	1.2	0.9	0.8	0.7	0.7	0.6	1.0
Hungary S772719Y	8.9	9.2	8.9	7.4	6.9	5.1	4.6	4.0	4.1	4.4	4.1	3.9	4.1	4.2	4.7
Poland S516559Y	5.7	4.6	4.5	4.0	3.0	3.0	3.1	2.9	3.0	2.8	2.8	2.7	2.3	2.2	2.6
Romania S934532Y	1.7	1.9	4.5	3.9	5.0	3.9	3.4	2.5	1.6	1.4	1.1	0.8	0.7	0.7	1.5
Sweden S136421Y	5.1	5.8	6.4	5.4	5.3	5.1	4.7	3.9	3.5	2.8	2.8	2.0	1.6	1.6	1.6	1.8	1.7	0.9
United Kingdom S735484Y	2.7	2.8	3.2	3.6	3.6	3.6	3.5	2.8	2.7	2.3	2.0	2.0	1.9	2.1	2.0	2.2	2.3	2.0
EU excluding euro area . . S215008Y	4.3	4.2	4.0	3.7	3.1	2.9	2.6	2.2	2.1	2.0	2.1	2.0	2.0	2.0	2.0
EU S032985Y	4.9	5.2	5.1	5.3	5.2	4.7	4.3	3.8	3.6	3.5	3.1	3.0	2.8	2.7	2.6	2.7	2.7	2.6
EU excluding Italy S816923Y	3.9	4.1	4.2	4.3	4.2	4.0	3.8	3.4	3.2	3.0	2.8	2.7	2.5	2.4	2.3	2.4	2.4	2.3
United States S919104Y	4.8	4.5	4.4	4.6	4.5	4.3	4.1	3.7	3.5	3.2	2.8	2.6	2.5	2.6	2.7	2.8	2.7
Japan S460408Y	3.5	3.4	3.5	3.5	3.3	3.2	3.0	2.7	2.5	2.4	2.4	2.5
Canada S772263Y	9.3	9.2	9.0	9.6	9.1	8.4	8.3	7.6	7.1	6.6	5.8	5.4	4.9	4.6	4.3	4.1	3.9

Final consumption expenditure

(as a percentage of GDP)

	1992	1993	1994	1995	1996	1997	1998	1999	2000	2001	2002	2003	2004	2005	2006	2007	2008	2009
Italy S141280Y	20.1	20.0	19.3	18.0	18.3	18.3	18.1	18.2	18.4	19.0	19.2	19.7	19.9	20.3	20.1	19.7	20.2	21.6
Belgium S365580Y	14.2	14.6	14.5	21.4	21.9	21.4	21.2	21.4	21.3	21.7	22.5	22.9	22.7	22.8	22.5	22.3	23.2	24.6
Germany S368838Y	19.5	19.6	19.4	19.6	19.8	19.4	19.1	19.2	19.0	18.9	19.2	19.3	18.8	18.7	18.3	17.9	18.1	19.7
Ireland S930956Y	15.4	15.3	15.2	16.3	15.6	15.0	14.2	13.8	13.6	14.5	14.9	15.0	15.3	15.2	15.5	16.2	18.2	19.4
Greece S941448Y	13.7	14.3	13.8	16.0	15.3	15.9	16.0	16.8	17.8	17.4	18.3	17.1	17.2	17.0	16.5	17.4	17.3	19.1
Spain S135861Y	16.4	16.8	16.2	18.1	18.0	17.5	17.3	17.2	17.2	17.1	17.2	17.4	17.8	18.0	18.0	18.4	19.4	21.2
France S480230Y	18.5	19.4	19.2	23.7	23.9	23.9	23.1	23.2	22.9	22.8	23.4	23.7	23.7	23.7	23.4	23.0	23.2	24.5
Cyprus S905902Y	13.6	15.4	16.9	16.6	17.4	16.1	17.2	18.2	19.7	17.8	18.0	18.6	17.4	17.9	19.9
Luxembourg S752471Y	12.3	12.0	11.9	15.9	16.4	16.7	15.8	15.5	15.1	16.1	16.5	16.4	16.9	16.5	15.3	14.8	15.1	16.7
Malta S141740Y	18.6	20.0	19.4	19.4	18.8	18.5	20.1	20.0	20.6	20.8	19.7	19.9	19.0	21.4	21.8
Netherlands S278856Y	14.1	14.3	13.9	23.8	22.8	22.3	22.2	22.2	22.0	22.6	23.7	24.5	24.2	23.7	25.1	25.3	25.5	28.2
Austria S782924Y	18.6	19.5	19.6	20.5	20.4	19.4	19.4	19.7	19.1	18.9	18.6	18.9	18.6	18.5	18.5	18.3	18.8	19.8
Portugal S673041Y	16.7	17.4	17.1	17.9	18.2	18.1	18.3	18.6	19.3	19.7	20.0	20.3	20.6	21.4	20.7	20.3	20.8	22.7
Slovenia S318987Y	18.6	18.4	18.2	18.2	18.2	18.8	19.4	19.1	19.0	18.9	19.0	18.8	17.3	18.1	20.2
Slovakia S488075Y	21.7	23.9	21.8	22.3	20.2	20.2	20.7	20.3	20.4	19.0	18.3	18.9	17.3	17.4	19.9
Finland S310439Y	24.3	22.7	21.8	22.7	23.2	22.5	21.7	21.4	20.5	20.7	21.4	22.1	22.2	22.5	22.2	21.5	22.6	25.1
Euro area S223082Y	18.1	18.4	18.1	20.3	20.4	20.2	19.8	19.9	19.8	19.9	20.2	20.5	20.4	20.4	20.3	20.0	20.5	22.1
Euro area excluding Italy . . S232948Y	18.2	18.6	18.3	20.8	20.9	20.6	20.2	20.2	20.0	20.0	20.5	20.6	20.5	20.5	20.3	20.1	20.5	22.2
Bulgaria S549034Y	15.3	11.9	12.6	15.7	16.5	17.9	17.4	18.1	19.0	18.4	18.0	16.6	16.2	16.3	16.2
Czech Republic S173803Y	20.9	20.2	20.9	20.0	21.2	21.1	21.1	22.3	23.4	22.1	22.1	21.3	20.3	20.4	22.1
Denmark S559612Y	25.8	26.8	25.9	25.2	25.4	25.0	25.6	25.7	25.1	25.7	26.2	26.5	26.5	26.0	25.9	26.0	26.7	29.7
Estonia S762208Y	25.5	23.2	20.9	20.7	22.0	19.8	18.8	18.4	18.3	17.6	17.2	16.4	16.9	19.4	22.2
Latvia S948477Y	22.7	21.2	20.6	23.2	22.7	20.8	20.5	21.0	21.4	19.5	17.4	16.6	17.4	19.7	18.4
Lithuania S593931Y	24.5	24.4	24.3	26.0	23.8	22.8	21.4	20.9	19.9	19.4	18.7	19.3	17.9	19.3	21.7
Hungary S690269Y	23.6	22.2	22.0	21.7	21.6	21.2	21.2	22.1	23.3	22.3	22.5	22.8	21.2	21.8	22.0
Poland S444781Y	18.7	18.3	17.8	17.3	17.4	17.4	17.9	17.9	18.1	17.6	18.1	18.3	18.0	18.5	18.4
Romania S865261Y	13.9	13.2	13.7	12.6	17.4	17.5	16.2	15.1	19.3	16.3	17.4	16.7	16.0	16.9	17.6
Sweden S062418Y	26.3	26.3	25.3	26.6	27.3	26.7	27.0	26.9	26.0	26.4	27.2	27.5	26.8	26.4	26.3	25.9	26.4	28.1
United Kingdom S675113Y	21.6	21.5	21.2	19.3	19.0	18.2	17.9	18.1	18.5	19.0	19.7	20.4	20.9	21.3	21.5	21.1	21.7	23.4
EU excluding euro area . . S240557Y	20.9	20.7	19.9	19.6	19.8	19.8	20.2	20.8	21.6	21.6	21.8	21.8	21.3	21.8	23.3
EU S958161Y	19.1	19.2	18.9	20.4	20.5	20.1	19.8	19.9	19.8	19.9	20.4	20.8	20.7	20.8	20.7	20.4	20.8	22.4
EU excluding Italy S745246Y	19.3	19.5	19.2	20.8	20.9	20.4	20.0	20.1	20.0	20.1	20.6	20.9	20.8	20.9	20.7	20.5	20.9	22.5
United States S862555Y	16.6	16.1	15.5	15.3	14.9	14.5	14.2	14.2	14.2	14.7	15.3	15.8	15.7	15.7	15.7	15.8	16.7
Japan S388953Y	15.3	15.3	15.9	16.5	16.9	17.5	18.0	18.1	17.9	18.1	17.9	17.9
Canada S721056Y	24.1	23.5	22.3	21.3	20.4	19.5	19.6	18.9	18.6	19.1	19.5	19.6	19.2	18.9	19.1	19.2	19.6

Compensation of employees

(as a percentage of GDP)

	1992	1993	1994	1995	1996	1997	1998	1999	2000	2001	2002	2003	2004	2005	2006	2007	2008	2009
Italy S293025Y	12.1	12.0	11.6	11.0	11.3	11.5	10.6	10.6	10.4	10.5	10.6	10.8	10.8	11.0	11.0	10.6	10.8	11.3
Belgium S486636Y	11.6	12.0	12.0	11.9	11.9	11.8	11.7	11.8	11.5	11.7	12.1	12.3	11.9	12.0	11.9	11.7	12.1	12.8
Germany S494735Y	10.4	10.6	10.3	8.7	8.7	8.5	8.3	8.2	8.1	7.9	7.9	7.8	7.7	7.5	7.2	6.9	6.9	7.4
Ireland S067336Y	10.6	10.8	10.4	10.1	9.6	9.1	8.4	8.1	8.0	8.3	8.7	9.0	9.2	9.8	9.9	10.2	11.2	12.1
Greece S081201Y	10.9	10.9	10.6	10.1	9.6	10.3	10.4	10.5	10.5	10.4	11.1	10.8	11.5	11.5	11.1	11.2	11.5	12.4
Spain S261881Y	11.8	11.8	11.3	11.2	11.2	10.8	10.6	10.5	10.3	10.1	10.0	10.1	10.1	10.0	10.0	10.2	10.8	11.8
France S621182Y	13.4	14.0	14.0	13.6	13.8	13.6	13.5	13.5	13.3	13.3	13.5	13.5	13.3	13.2	13.0	12.8	12.7	13.2
Cyprus S097108Y	12.5	13.2	13.7	13.5	13.5	13.5	13.2	13.8	15.5	14.8	14.7	14.7	14.2	14.1	15.6
Luxembourg S893220Y	8.5	8.5	8.8	8.5	7.8	7.5	7.9	8.1	8.0	8.1	7.9	7.3	7.1	7.1	7.9
Malta S235098Y	14.6	15.2	14.4	14.4	13.8	13.0	14.9	14.5	14.7	14.6	14.0	13.3	12.9	14.6	14.5
Netherlands S376898Y	9.4	9.6	9.3	10.6	10.1	9.8	9.7	9.7	9.5	9.6	9.8	10.1	10.0	9.6	9.3	9.2	9.1	10.0
Austria S299152Y	11.8	12.2	12.2	12.6	12.3	11.5	11.4	11.4	11.0	9.9	9.6	9.7	9.4	9.4	9.4	9.2	9.2	9.8
Portugal S803684Y	13.8	14.2	13.7	12.9	13.1	13.1	13.4	13.7	14.2	14.3	14.7	14.1	14.1	14.4	13.6	12.9	12.9	13.7
Slovenia S423117Y	11.4	11.3	11.2	11.0	11.0	11.3	11.8	11.6	11.7	11.6	11.5	11.2	10.5	11.1	12.6
Slovakia S619457Y	9.5	9.5	9.3	9.5	9.4	8.8	8.9	9.1	8.9	8.1	7.3	7.4	6.8	6.6	7.8
Finland S429868Y	17.3	16.1	15.2	15.2	15.4	14.6	13.9	13.6	13.1	13.0	13.3	13.7	13.6	13.8	13.5	12.9	13.4	14.9
Euro area S247547Y	11.8	12.0	11.7	11.0	11.0	10.9	10.6	10.5	10.4	10.3	10.4	10.5	10.4	10.4	10.2	10.0	10.1	10.8
Euro area excluding Italy S254863Y	11.6	11.9	11.6	10.9	10.9	10.7	10.6	10.5	10.4	10.3	10.4	10.4	10.3	10.3	10.0	9.9	10.0	10.7
Bulgaria S659856Y	9.3	7.0	6.8	9.9	10.5	10.0	8.9	9.6	10.4	10.2	9.8	9.0	9.0	9.0	9.7
Czech Republic S305423Y	7.3	7.5	7.4	6.8	7.3	7.1	7.4	7.8	8.3	7.9	8.0	7.8	7.6	7.6	8.1
Denmark S695429Y	17.8	18.1	17.5	17.2	17.2	17.0	17.4	17.5	17.1	17.4	17.8	18.0	17.8	17.3	17.0	16.8	17.2	19.4
Estonia S881532Y	11.8	11.3	10.5	10.5	11.8	10.8	10.2	10.3	10.2	10.2	9.9	9.4	9.8	11.4	12.9
Latvia S050909Y	11.2	10.9	10.5	10.8	11.3	10.8	10.2	10.5	10.7	10.5	10.0	10.0	10.6	12.0	11.9
Lithuania S707412Y	9.6	10.4	11.1	12.6	13.3	12.1	11.7	11.4	10.8	10.8	10.3	10.4	9.9	10.8	12.7
Hungary S850423Y	11.9	10.9	10.7	10.7	10.8	10.6	11.1	12.2	13.2	12.6	12.6	12.2	11.5	11.6	11.2
Poland S598321Y	10.7	10.5	10.5	10.0	10.1	10.1	10.7	10.8	10.7	10.1	10.0	9.8	9.6	10.0	10.2
Romania S008913Y	7.0	6.7	5.4	5.8	8.1	7.9	8.3	8.5	8.2	8.1	8.7	9.1	9.3	10.0	10.6
Sweden S226538Y	18.3	18.0	17.1	16.4	16.8	16.4	15.9	15.5	15.3	15.6	15.8	16.1	15.9	15.7	15.3	15.1	14.9	15.4
United Kingdom S810320Y	11.8	10.7	9.1	10.6	10.5	10.0	9.7	9.6	9.7	10.1	10.3	10.7	11.0	11.3	11.3	11.0	11.0	12.0
EU excluding euro area S265540Y	11.9	11.8	11.3	10.9	10.9	10.8	11.1	11.4	11.7	11.8	11.9	11.7	11.4	11.5	12.4
EU S107285Y	12.1	12.1	11.6	11.1	11.2	11.0	10.7	10.6	10.5	10.5	10.7	10.8	10.8	10.8	10.6	10.4	10.5	11.2
EU excluding Italy S889242Y	12.0	12.0	11.5	11.2	11.2	10.9	10.7	10.6	10.5	10.5	10.7	10.8	10.8	10.8	10.6	10.4	10.4	11.2
United States S974123Y	11.1	10.9	10.6	10.4	10.1	9.8	9.7	9.6	9.5	9.8	10.1	10.3	10.2	10.1	10.0	10.0	10.3
Japan S517470Y	6.3	6.2	6.5	6.6	6.5	6.6	6.7	6.6	6.4	6.3	6.2	6.1
Canada S832361Y	15.6	15.2	14.3	13.7	13.0	12.3	12.0	11.6	11.3	11.4	11.7	11.8	11.5	11.3	11.5	11.5	11.5

Social benefits other than social transfers in kind

(as a percentage of GDP)

	1992	1993	1994	1995	1996	1997	1998	1999	2000	2001	2002	2003	2004	2005	2006	2007	2008	2009
Italy S285077Y	16.1	16.6	16.8	16.3	16.5	17.0	16.7	16.9	16.4	16.2	16.5	16.8	16.9	17.0	17.0	17.1	17.7	19.2
Belgium S481322Y	24.4	24.6	24.0	16.3	16.4	16.2	15.9	15.6	15.2	15.4	15.8	16.1	15.9	15.8	15.5	15.4	15.9	17.4
Germany S487168Y	17.3	18.4	18.6	17.6	18.8	18.8	18.6	18.6	18.4	18.6	19.5	19.8	19.4	19.2	18.4	17.2	16.9	18.4
Ireland S058389Y	14.6	14.5	14.4	11.7	11.2	10.4	9.6	8.5	7.8	8.3	8.8	8.8	9.1	9.5	9.7	10.3	11.9	15.3
Greece S074303Y	14.8	15.1	15.2	13.5	13.7	13.9	14.1	14.1	14.8	15.4	15.4	15.9	15.5	16.3	16.8	17.6	18.8	20.6
Spain S254662Y	15.5	16.2	15.8	13.6	13.5	13.0	12.5	12.1	12.0	11.7	11.8	11.7	11.7	11.6	11.5	11.6	12.4	14.6
France S607223Y	22.0	23.1	22.9	17.9	18.0	18.1	17.7	17.7	17.1	17.1	17.3	17.5	17.6	17.7	17.6	17.4	17.6	18.8
Cyprus S086510Y	7.8	8.2	8.7	8.7	8.9	9.0	9.2	10.2	11.3	12.0	12.7	12.2	11.4	11.9	13.6
Luxembourg S877200Y	14.3	14.2	14.5	14.3	13.5	13.1	13.9	14.5	15.0	14.7	14.4	13.4	12.7	13.5	15.5
Malta S230525Y	11.3	12.4	12.5	12.6	12.7	11.9	12.5	12.6	12.7	12.8	12.9	12.4	12.6	12.7	13.4
Netherlands S367251Y	26.8	27.0	26.0	15.2	14.6	13.5	12.7	12.1	11.3	11.1	11.2	11.5	11.4	10.9	10.8	10.4	10.4	11.6
Austria S290726Y	19.5	21.0	21.2	19.7	19.7	19.3	19.0	19.1	18.9	19.0	19.2	19.5	19.2	18.8	18.5	18.0	18.1	19.5
Portugal S796822Y	13.4	15.0	14.8	11.2	11.3	11.1	11.3	11.3	11.7	12.0	12.6	13.8	14.3	14.9	15.1	15.2	15.6	17.2
Slovenia S417107Y	15.6	15.5	15.8	15.9	15.8	16.0	16.0	15.9	15.9	15.9	15.7	15.3	14.4	14.7	16.8
Slovakia S611616Y	14.2	14.2	13.7	13.6	14.3	13.6	13.6	13.7	11.9	12.3	12.4	11.9	11.6	11.3	13.6
Finland S424417Y	23.2	24.6	24.5	21.9	21.4	19.8	18.3	17.8	16.2	15.9	16.4	16.8	16.6	16.5	16.0	15.1	15.5	17.8
Euro area S274092Y	19.5	20.4	20.2	16.8	17.2	17.1	16.7	16.6	16.2	16.1	16.5	16.7	16.6	16.5	16.2	15.8	16.0	17.7
Euro area excluding Italy . . S304509Y	19.5	20.5	20.3	16.9	17.3	17.1	16.7	16.5	16.1	16.1	16.5	16.7	16.5	16.4	16.0	15.6	15.7	17.4
Bulgaria S653194Y	10.6	8.8	8.7	10.7	10.8	12.7	12.0	12.7	12.7	12.0	11.9	11.4	10.9	10.5	12.5
Czech Republic S298929Y	10.7	10.9	11.5	11.3	11.7	12.1	11.9	12.4	12.2	12.9	12.6	12.6	12.8	12.8	13.8
Denmark S688004Y	19.2	20.3	21.7	19.5	18.9	17.9	17.4	16.8	16.2	16.3	16.4	17.1	16.9	16.3	15.4	15.0	14.9	16.8
Estonia S874720Y	9.5	9.8	9.4	9.6	10.5	9.5	9.1	8.9	8.8	9.2	8.9	8.8	8.8	10.6	14.1
Latvia S043578Y	12.7	12.9	12.5	13.4	14.9	12.4	11.2	10.1	9.4	9.2	8.4	8.1	7.1	8.0	12.3
Lithuania S701652Y	8.1	8.5	9.0	9.8	11.3	10.7	10.5	9.3	9.1	9.0	8.6	8.5	9.1	11.0	15.0
Hungary S841405Y	15.2	13.5	12.6	13.2	13.2	12.6	12.5	13.2	13.9	13.9	14.6	15.0	15.2	15.9	16.1
Poland S589199Y	17.0	17.1	17.1	16.3	16.8	16.0	16.9	17.0	16.9	16.0	15.7	15.2	14.2	14.1	14.7
Romania S999507Y	9.4	9.1	9.5	10.4	10.4	9.7	9.7	9.3	8.4	8.7	8.9	8.8	9.2	10.4	12.9
Sweden S215670Y	22.2	23.6	23.3	20.1	19.3	18.5	18.3	17.8	17.1	16.9	17.0	17.7	17.5	17.0	16.3	15.3	15.1	16.6
United Kingdom S802598Y	13.1	13.8	13.6	15.0	14.5	14.1	13.4	12.8	12.6	12.9	12.8	12.8	12.8	12.9	12.6	12.8	13.1	15.1
EU excluding euro area . . S319584Y	16.0	15.5	14.9	14.3	13.9	13.5	13.7	13.7	13.8	13.7	13.6	13.3	13.1	13.4	15.2
EU S102887Y	18.7	19.5	19.4	16.6	16.8	16.6	16.1	15.9	15.5	15.5	15.8	16.0	15.8	15.7	15.4	15.1	15.4	17.1
EU excluding Italy S881151Y	18.5	19.5	19.4	16.7	16.9	16.5	16.1	15.8	15.3	15.4	15.7	15.9	15.7	15.6	15.2	14.8	15.0	16.8
United States S926645Y	11.6	11.7	11.6	11.7	11.6	11.3	10.9	10.7	10.5	11.2	11.8	11.9	11.9	11.8	11.9	12.1	12.9
Japan S014742Y	8.7	8.8	9.4	10.0	10.1	10.5	11.1	11.2	11.2	11.3	11.5	11.6
Canada S338041Y	13.3	13.5	12.8	12.2	11.8	11.4	11.4	10.8	10.3	10.6	10.5	10.3	10.1	9.9	10.1	10.0	10.1

Capital expenditure

(as a percentage of GDP)

	1992	1993	1994	1995	1996	1997	1998	1999	2000	2001	2002	2003	2004	2005	2006	2007	2008	2009
Italy S368005Y	4.4	4.1	3.6	4.5	3.7	3.4	3.8	3.9	2.6	4.2	3.6	4.3	4.0	4.1	5.0	4.0	3.7	4.3
Belgium S526786Y	3.0	2.9	3.2	3.0	3.3	3.2	2.5	2.6	3.2	2.5	5.3	2.6	2.8	2.8	3.5
Germany S538427Y	3.6	3.2	3.0	3.1	3.1	0.7	3.3	3.2	3.2	2.9	2.8	2.6	2.6	2.8	3.0
Ireland S119278Y	3.9	3.6	3.6	3.6	5.8	4.5	5.4	5.1	4.6	4.4	4.5	4.6	5.5	7.0	7.7
Greece S121110Y	4.4	3.9	5.5	5.8	5.8	6.4	5.8	5.4	5.5	6.1	4.4	3.9	4.2	4.5	4.6
Spain S295998Y	6.0	4.9	4.7	4.9	4.8	4.6	4.8	5.1	4.8	5.2	4.9	5.1	5.4	5.3	5.9
France S672056Y	4.8	4.2	4.1	3.9	4.1	3.9	3.8	3.8	3.9	4.0	4.2	4.1	4.2	4.2	4.3
Cyprus S147836Y	4.2	3.7	3.9	3.4	3.2	3.5	3.4	3.6	4.0	4.2	3.6	3.7	3.7	3.5	4.9
Luxembourg S932568Y	5.2	6.0	4.2	5.5	5.2	4.8	3.8	6.2	5.9	5.9	6.0	5.3	4.6	4.3	5.0
Malta S264077Y	3.6	4.5	4.6	5.1	5.3	4.7	4.3	4.5	8.0	4.5	4.9	4.5	3.9	3.0	3.1
Netherlands S429186Y	3.9	3.3	3.2	3.2	3.4	2.9	4.1	4.2	4.2	3.5	3.5	3.3	3.6	4.0	5.4
Austria S348936Y	4.7	4.7	4.0	4.2	3.8	3.3	3.5	3.4	3.2	6.6	3.3	3.3	3.3	3.1	2.8
Portugal S848294Y	5.3	5.9	6.4	6.0	5.8	4.9	5.4	4.3	4.3	4.5	4.3	3.4	3.5	2.8	4.0
Slovenia S467167Y	11.8	4.2	3.9	4.9	5.3	4.7	4.6	4.0	4.6	4.5	4.0	4.3	5.1	5.7	6.2
Slovakia S653558Y	7.8	10.2	7.2	6.2	8.5	12.1	5.2	6.5	3.0	2.8	3.8	3.0	2.7	3.3	3.9
Finland S466843Y	5.5	4.3	3.3	3.2	3.5	2.8	2.9	3.1	3.0	3.1	2.9	2.6	2.7	2.9	3.2
Euro area S328718Y	4.3	3.8	3.6	3.7	3.8	2.8	3.9	3.8	3.9	3.9	3.9	3.8	3.7	3.8	4.2
Euro area excluding Italy S338272Y	4.3	3.8	3.7	3.7	3.8	2.8	3.8	3.8	3.8	3.8	3.8	3.5	3.7	3.8	4.2
Bulgaria S702422Y	4.5	4.2	4.0	3.8	3.6	3.4	3.8	4.4	4.3	8.1	5.6	5.3
Czech Republic S343058Y	19.8	8.2	8.2	9.2	6.9	6.3	8.6	8.9	8.3	7.3	7.5	6.9	6.2	6.5	6.4
Denmark S740996Y	2.6	2.6	2.5	2.4	2.3	2.3	2.2	2.2	2.0	2.3	2.1	2.3	2.3	2.7	2.7
Estonia S925772Y	5.3	4.9	4.8	5.7	4.7	4.2	4.5	5.7	4.7	3.8	4.0	5.1	5.9	6.5	5.4
Latvia S086419Y	2.7	3.3	2.0	3.7	4.3	3.7	3.4	3.5	2.8	4.2	5.0	7.1	6.8	5.6	4.9
Lithuania S740297Y	4.6	4.9	15.1	3.7	3.5	4.8	4.4	4.0	3.5	4.0	3.8	4.5	6.1	5.5	4.5
Hungary S907975Y	6.3	4.6	5.3	7.8	5.1	5.9	6.6	8.9	5.6	4.8	5.4	6.2	5.5	4.1	3.8
Poland S652519Y	4.0	8.4	4.6	4.8	3.9	2.9	4.0	4.0	4.5	3.9	4.4	4.8	4.8	5.5	6.3
Romania S044398Y	4.6	4.7	3.3	2.8	3.1	4.5	4.1	4.5	4.9	5.0	4.9	6.7	6.8	6.9	6.2
Sweden S292296Y	4.4	3.5	3.6	2.4	3.3	2.9	3.0	3.3	3.1	3.0	3.2	3.2	3.2	3.3	3.8
United Kingdom S848927Y	3.2	2.5	1.9	1.9	1.8	-0.6	2.2	2.3	2.6	2.6	2.7	2.9	2.9	5.1	5.2
EU excluding euro area S349588Y	3.9	3.4	2.7	2.6	2.5	0.8	2.8	3.0	3.1	3.0	3.2	3.5	3.5	4.9	5.0
EU S132691Y	4.3	3.7	3.4	3.4	3.5	2.2	3.6	3.6	3.7	3.6	3.7	3.7	3.7	4.1	4.4
EU excluding Italy S934247Y	4.2	3.7	3.4	3.4	3.4	2.2	3.5	3.5	3.6	3.6	3.6	3.5	3.6	4.1	4.4
United States S019353Y
Japan S580383Y
Canada S889267Y

Investment

(as a percentage of GDP)

	1992	1993	1994	1995	1996	1997	1998	1999	2000	2001	2002	2003	2004	2005	2006	2007	2008	2009
Italy S230367Y	2.9	2.5	2.2	2.1	2.2	2.2	2.3	2.4	2.3	2.4	1.7	2.5	2.4	2.4	2.3	2.3	2.2	2.4
Belgium S431180Y	1.4	1.5	1.6	1.9	1.8	1.7	1.7	2.0	2.0	1.7	1.7	1.6	1.6	1.8	1.6	1.6	1.7	1.8
Germany S430680Y	2.8	2.7	2.5	2.2	2.1	1.8	1.8	1.9	1.8	1.7	1.7	1.6	1.4	1.3	1.4	1.4	1.5	1.7
Ireland S014598Y	2.0	2.2	2.3	2.3	2.4	2.5	2.7	3.1	3.5	4.3	4.3	3.7	3.5	3.6	3.7	4.4	5.1	4.5
Greece S027748Y	3.5	3.3	3.1	2.8	2.8	3.0	3.2	3.1	3.6	3.6	3.4	3.5	3.5	2.8	3.0	2.9	2.8	2.9
Spain S209848Y	4.0	4.1	3.9	3.7	3.1	3.1	3.3	3.3	3.2	3.3	3.5	3.6	3.4	3.6	3.7	4.0	3.8	4.4
France S551972Y	3.5	3.1	3.1	3.2	3.2	2.9	2.8	2.9	3.1	3.0	2.9	3.1	3.1	3.3	3.2	3.3	3.3	3.3
Cyprus S986203Y	3.5	3.3	3.3	2.9	2.5	2.9	2.9	3.0	3.4	4.0	3.1	3.0	2.9	3.0	4.1
Luxembourg S825798Y	5.1	5.0	4.2	3.8	4.9	3.0	4.5	4.3	3.8	4.3	4.9	4.6	4.3	4.5	3.6	3.3	3.2	3.6
Malta S199759Y	2.9	3.5	3.7	4.6	4.5	3.9	3.4	4.1	4.7	3.9	4.7	3.9	3.7	2.3	2.2
Netherlands S327063Y	2.0	2.0	2.0	3.2	3.3	2.9	3.0	3.0	3.1	3.3	3.5	3.6	3.2	3.3	3.3	3.4	3.5	4.0
Austria S246179Y	3.2	3.1	3.2	3.0	2.8	2.0	1.8	1.7	1.5	1.2	1.3	1.2	1.1	1.1	1.1	1.0	1.1	1.1
Portugal S745487Y	3.7	3.9	3.5	3.8	4.2	4.5	4.0	4.1	3.8	3.9	3.5	3.1	3.1	2.9	2.4	2.3	2.3	2.4
Slovenia S376172Y	3.2	3.1	2.9	2.9	3.4	3.2	3.2	3.0	3.2	3.5	3.2	3.7	4.2	4.3	4.9
Slovakia S560134Y	2.4	3.8	5.4	4.0	2.9	2.8	3.1	3.3	2.6	2.4	2.1	2.2	1.9	2.0	2.3
Finland S386606Y	3.5	2.8	2.9	2.6	2.8	3.0	2.8	2.7	2.4	2.5	2.6	2.8	2.8	2.5	2.3	2.4	2.5	2.8
Euro area S359297Y	3.0	2.9	2.7	2.6	2.6	2.4	2.4	2.5	2.5	2.5	2.4	2.5	2.4	2.5	2.5	2.6	2.5	2.8
Euro area excluding Italy S369605Y	3.0	2.9	2.8	2.7	2.7	2.5	2.4	2.5	2.5	2.5	2.5	2.5	2.5	2.5	2.5	2.6	2.6	2.8
Bulgaria S610645Y	0.8	0.9	1.4	3.2	3.9	3.7	3.5	2.8	2.7	2.9	4.2	4.2	4.8	5.7	4.8
Czech Republic S250108Y	5.3	4.6	4.3	4.2	3.3	3.6	3.5	3.9	4.5	4.8	4.9	5.0	4.7	4.9	5.4
Denmark S631013Y	1.9	1.8	1.8	1.8	1.9	1.8	1.7	1.7	1.7	1.9	1.8	1.6	1.9	1.8	1.9	1.9	1.8	2.1
Estonia S826745Y	5.1	4.4	4.3	4.9	4.2	3.7	4.1	5.3	4.4	3.8	4.0	4.7	5.2	5.3	4.9
Latvia S006333Y	1.9	2.3	1.2	1.4	1.5	1.3	1.1	1.3	2.4	3.1	3.1	4.6	5.7	4.8	3.9
Lithuania S653850Y	3.2	2.4	2.3	2.5	2.6	2.4	2.2	2.9	3.0	3.4	3.4	4.1	5.2	5.0	3.9
Hungary S781970Y	0.2	1.5	2.4	3.1	2.9	3.2	3.7	4.9	3.5	3.5	4.0	4.4	3.6	2.9	2.7
Poland S525099Y	3.3	3.6	3.9	3.9	3.5	2.4	3.4	3.4	3.3	3.4	3.4	3.9	4.2	4.6	5.3
Romania S945348Y	4.4	4.1	2.7	1.8	1.6	3.4	2.7	3.4	3.5	3.0	3.9	5.1	5.7	5.5	5.4
Sweden S145226Y	2.6	1.0	2.8	3.8	3.4	3.0	3.1	3.1	2.8	2.9	3.1	2.9	2.9	3.0	3.1	3.1	3.3	3.6
United Kingdom S745751Y	2.0	1.8	1.8	2.0	1.5	1.2	1.3	1.3	1.2	1.5	1.5	1.6	1.8	0.7	1.8	1.9	2.3	2.7
EU excluding euro area S379617Y	2.4	2.1	1.8	1.9	1.8	1.7	2.0	2.1	2.1	2.2	1.6	2.5	2.6	3.0	3.3
EU S042319Y	2.8	2.6	2.6	2.6	2.5	2.3	2.3	2.3	2.3	2.4	2.3	2.4	2.4	2.3	2.5	2.6	2.7	2.9
EU excluding Italy S825591Y	2.8	2.6	2.6	2.7	2.5	2.3	2.3	2.3	2.3	2.4	2.4	2.4	2.4	2.2	2.5	2.6	2.7	3.0
United States S927352Y	2.5	2.4	2.3	2.3	2.4	2.4	2.4	2.5	2.5	2.6	2.7	2.6	2.5	2.5	2.4	2.5	2.5
Japan S470251Y	7.4	6.6	6.5	6.8	6.0	5.8	5.4	4.8	4.4	5.8	3.7	3.5
Canada S779271Y	3.0	2.7	2.8	2.7	2.3	2.3	2.2	2.0	2.3	2.5	2.5	2.5	2.5	2.7	2.8	2.9	3.3

METHODOLOGICAL APPENDIX

GENERAL INDICATIONS

The series refer to the consolidated general government accounts and gross debt of the European Union countries and of the remaining G-7 countries (the United States, Japan and Canada). For the European countries this Supplement refers to the data obtained for the Excessive deficit procedure laid down in the Maastricht Treaty. For these countries total revenue and total expenditure are defined according to Commission Regulation (EC) No. 1500/2000. The data on Italy include - as memorandum items - revenue (total and current) and expenditure (total and current, including and excluding interest payments) defined in accordance with the traditional format for general government accounts. In the transition from the traditional account aggregates to those computed in accordance with Commission Regulation (EC) No. 1500/2000, on the one hand, gross operating surplus and indirect taxes on products paid by general government are excluded from both revenue and expenditure items; on the other hand, proceeds from the sale of goods and services, residual sales and production for own use are added to revenue rather than deducted from expenditure. By construction the adjustments have the same impact on revenue and expenditure, leaving the balances unaltered; they affect "other current revenue" and "other current expenditure", residual items not explicitly mentioned in this Supplement.

The time series cover the period 1980-2009. The paper version of the Supplement provides data only for 1992-2009; those for the years 1980-1991 are available in the electronic version of the Supplement.

The sources used are as follows:

- Istat, for Italy;
- for European countries, European Commission, DG II Economic and Financial Affairs, General Government Data, October 2004 (data based on the 1979 version of the European System of Accounts - ESA79) and May 2010 (data based on the 1995 version of the European System of Accounts - ESA95); for data on capital taxes based on ESA79, European Commission, March 1999, and Eurostat, supplemented by data supplied directly by the Commission;
- OECD, Annual National Accounts 2010, at www.sourceoecd.org (as updated to July 2010) for the items of the economic accounts of the United States, Japan and Canada;
- OECD, Economic Outlook 2010, at www.sourceoecd.org (as updated to July 2010) for the GDP and debt of the United States, Japan and Canada.

Owing to the differences between the methods used by the OECD and the other sources in constructing general government accounts, the single items are strictly comparable only for the European Union countries.

For Italy, the data are based on ESA95 for the entire period 1980-2009.

For the other European countries, data based on ESA95 are available for different periods. For comparability, this Supplement sets the accounting change in the same year for every country. The data for 1980-1994 are based on ESA79 and those from 1995 onwards on ESA95. In the tables the breaks due to the change in the European system of accounts are marked by a boldface vertical line.

Some of the Commission data concerning individual items of the general government accounts have been adjusted. In particular, for those based on ESA79, the Commission disaggregation does not show total capital revenue and total capital expenditure separately, but gives only the balance. Here, in order to obtain the separate items, the Commission data have

been supplemented by other data provided by Eurostat and the Commission itself, and by Bank of Italy estimates where necessary. As a first step, series were constructed for capital revenue. These were then used, together with the Commission series for capital account balance, to obtain series for total capital expenditure. The capital revenue and expenditure series were then used to recalculate the series for total revenue and total expenditure, which thus differ from those used by the EU Commission (in particular, total expenditure was not obtained by adding capital expenditure net of capital revenue to current expenditure, as the Commission does, but by adding total capital expenditure). Instead, for the data based on ESA95, total expenditure series (obtained as the sum of current expenditure and capital expenditure) and total revenue series (inclusive of capital revenue) are available from the Commission.

For the data on revenue (total and current) and expenditure (total and current, including and excluding interest payments) - defined in accordance with Regulation (EC) No. 1500/2000 - figures are based on ESA95. The data cover the period 1980-2009 for Italy, and 1995-2009 for the other European countries.

For the individual items of the accounts, averages have been calculated for the 16 countries belonging to the euro area in January 2010 (Belgium, Germany, Ireland, Greece, Spain, France, Italy, Cyprus, Luxembourg, Malta, the Netherlands, Austria, Portugal, Slovenia, Slovakia and Finland), both including and excluding Italy. For data based on ESA79, the averages are computed by weighting the ratios to GDP, where the weights are the ratios of the GDP of each country (expressed in euros) to the total GDP of the relevant group of countries. For data based on ESA95, the averages are computed as ratios of the sum, for the relevant countries, of the values of the variable under consideration (expressed in euros) to the sum, for the same countries, of the values of GDP (expressed in euros). In both cases, the values of GDP are those determined for the Excessive Deficit Procedure. Where a figure is missing for a country, the average has been calculated omitting that country. Averages have been computed using data (including those for Italy) based on ESA79 until 1994.

For the sake of comparability, the euro area includes Greece, Cyprus, Malta, Slovenia and Slovakia in all the years considered.

The figures for Germany up to and including 1990 refer to the country's western regions.

The data referring to the EU countries include the proceeds of the sale of UMTS licences. These proceeds are recorded, with a negative sign, among capital expenditure.

Because of rounding, the sum of the separate items may sometimes differ from the total shown.

Prepared by Paola Umaldi. The Bank of Italy thanks the Economic and Financial Affairs Directorate General of the European Commission, Eurostat and the OECD for permission to use data they produce.

NOTES TO THE TABLES

The order of the tables in the following notes is based on their code numbers. The notes to each table are set out below; together with references to the "Notes to the classification variables" section where appropriate.

TUEE0100 - NET BORROWING (+)/LENDING (-)

The balance of the consolidated general government accounts (excluding financial transactions). The item corresponds to the net resources the general government makes available to other sectors.

TUEE0110 - PRIMARY NET BORROWING (+)/LENDING (-)

Net borrowing or lending excluding interest payments (see the note to Table TUEE0280).

TUEE0120 - CURRENT ACCOUNT BALANCE

The difference between current expenditure and current revenue (see the notes to Tables TUEE0160 and TUEE0260). A positive balance indicates a deficit, a negative balance a surplus, i.e. public saving.

TUEE0130 - CAPITAL ACCOUNT BALANCE

The difference between capital expenditure and capital revenue.

TUEE0140 - GROSS PUBLIC DEBT

For the EU countries, the definition is that adopted for the Excessive deficit procedure provided for in the Treaty on the European Union (on the basis of the methods specified in Council Regulation No. 3605/93). The aggregate refers to the total gross debt at the nominal value outstanding at the end of the year of general government, with the exception of those liabilities of which the corresponding financial assets are held by the sector of general government.

For the United States, Japan and Canada, data are processed according to SNA93.

TUEE0150 - TOTAL REVENUE (REGULATION EC 1500/2000)

The sum of current revenue and capital revenue. For the EU countries data on total revenue are defined according to Commission Regulation (EC) No. 1500/2000. The data on Italy include - as memorandum items - total revenue defined in accordance with the traditional format for general government accounts. In the transition from the traditional account aggregates to those calculated in accordance with Commission Regulation (EC) No. 1500/2000, gross operating surplus and indirect taxes on products paid by general government are excluded from revenue while proceeds from the sale of goods and services, residual sales and production for own use are added. An adjustment of the same size is made for total expenditure, implying a null impact on net borrowing.

TUEE0160 - CURRENT REVENUE (REGULATION EC 1500/2000)

The sum of direct taxes, indirect taxes, social security contributions and other current revenue. For the EU countries, data on current revenue are defined according to Commission Regulation (EC) No. 1500/2000. The data on Italy include - as memorandum items - current revenue defined in accordance with the traditional format for general government accounts. In the transition from the traditional account aggregates to those calculated in accordance with Commission Regulation (EC) No. 1500/2000, gross operating surplus and indirect taxes on products paid by general government are excluded from current revenue while proceeds from the sale of goods and services, residual sales and production for own use are added. An adjustment of the same size is made for current expenditure, implying a null impact on the current balance.

TUEE0170 - TAX REVENUE AND SOCIAL SECURITY CONTRIBUTIONS

The sum of direct and indirect taxes, social security contributions and capital taxes (see the notes to Tables TUEE0210, TUEE0220 and TUEE0230).

TUEE0180 - TAX REVENUE AND SOCIAL SECURITY CONTRIBUTIONS, EXCLUDING CAPITAL TAXES

The sum of direct and indirect taxes and social security contributions (see the notes to Tables TUEE0210, TUEE0220 and TUEE0230).

TUEE0210 - DIRECT TAXES

Taxes on income and wealth due to general government.

TUEE0220 - INDIRECT TAXES

Taxes on the production and importation of goods and services due to general government.

TUEE0230 - SOCIAL SECURITY CONTRIBUTIONS

The sum of actual social security contributions paid by workers and employers (directly or through ad hoc agencies) and imputed social security contributions. The figures for Canada do not include imputed social security contributions.

TUEE0240 - TOTAL EXPENDITURE (REGULATION EC 1500/2000)

The sum of current and capital expenditure (see the notes to tables TUEE0260 and TUEE0400). For the EU countries data on current expenditure are defined according to Commission Regulation (EC) No. 1500/2000. The data on Italy include - as memorandum items - current expenditure defined in accordance with the traditional format for general government accounts. In the transition from the traditional account aggregates to those calculated in accordance with Commission Regulation (EC) No. 1500/2000, current expenditure excludes the sale of goods and services, residual sales and production for own use, which are computed as minor expenses in the traditional accounts, the gross operating surplus and the indirect taxes on products paid by general government. An adjustment of the same size is made for total revenue, implying a null impact on net borrowing.

**TUEE0250 - TOTAL EXPENDITURE, EXCLUDING
INTEREST PAYMENTS
(REGULATION EC 1500/2000)**

The difference between total expenditure and interest payments (see the notes to Tables TUEE0240 and TUEE0280).

**TUEE0260 - CURRENT EXPENDITURE
(REGULATION EC 1500/2000)**

The sum of current transfers, interest payments and final consumption expenditure. For the EU countries, data on current expenditure are defined according to Commission Regulation (EC) No. 1500/2000. The data on Italy include - as memorandum items - current expenditure defined in accordance with the traditional format for general government accounts. In the transition from the traditional account aggregates to those calculated in accordance with Commission Regulation (EC) No. 1500/2000, current expenditure excludes the sale of goods and services, residual sales and production for own use, which are computed as minor expenses in the traditional accounts, the gross operating surplus and the indirect taxes on products paid by general government. An adjustment of the same size is made for current revenue, implying a null impact on the current balance.

**TUEE0270 - CURRENT EXPENDITURE,
EXCLUDING INTEREST PAYMENTS
(REGULATION EC 1500/2000)**

The difference between current expenditure and interest payments (see the notes to Tables TUEE0260 and TUEE0280).

TUEE0280 - INTEREST PAYMENTS

Interest payments and other borrowing costs, including the effects of swaps and forward rate agreements.

**TUEE0290 - FINAL CONSUMPTION
EXPENDITURE**

Expenditure incurred by general government (compensation of employees, purchases of goods and services, social transfers in kind related to expenditure on products supplied to households via market producers and consumption of fixed capital) for the satisfaction of individual or collective needs.

TUEE0300 - COMPENSATION OF EMPLOYEES

General government payments in cash or in kind to employees, including net earnings and actual and imputed social security contributions.

**TUEE0330 - SOCIAL BENEFITS OTHER THAN
SOCIAL TRANSFERS IN KIND**

Social benefits, including social security and social assistance benefits in cash.

TUEE0350 - INVESTMENT

Gross (with respect to depreciation) fixed capital formation, consisting of the value of purchases less sales of durable goods to be utilized in production processes for a period longer than one year. The data based on ESA79 include net purchases of land.

TUEE0400 - CAPITAL EXPENDITURE

Investment (see the note to table TUEE0350), net acquisition of other non-financial assets and capital transfers. The net acquisition of other non-financial assets includes the proceeds of the sale of UMTS licences (with a negative sign). In EU countries, these proceeds were mainly recorded in 2000.

GENERAL INFORMATION

- I - Unless indicated otherwise, figures have been computed by the Bank of Italy.
- II - Symbols and Conventions:
- the phenomenon in question does not occur;
 - the phenomenon occurs but its value is not known;
 - .. the value is known but is nil or less than half the final digit shown.
- Figures in parentheses in roman type () are provisional, those in parentheses in italics () are estimated.
- III - The tables are identified both by a number and by an alphanumeric code that defines the content of the table in the database in the electronic archive in which information to be released to the public is held. A similar code identifies the different aggregates shown in each table.
- IV - The methodological notes in the last part of the Supplement are identified by electronic codes that refer to the tables and, within each table, to the individual aggregates. Notes that refer to a single observation are also identified by the date of that observation.

SUPPLEMENTS TO THE STATISTICAL BULLETIN

Money and Banking (monthly)

The Financial Market (monthly)

The Public Finances, borrowing requirement and debt (monthly)

Balance of Payments and International Investment Position (monthly)

Financial Accounts (quarterly)

Payment System (half yearly)

Public Finance Statistics in the European Union (annual)

Local Government Debt (annual)

Household Wealth in Italy (annual)

Sample Surveys (irregular)

Methodological Notes (irregular)

All the supplements are available on the Bank of Italy's site (www.bancaditalia.it).

Requests for clarifications concerning data contained in this publication can be sent by e-mail to statistiche@bancaditalia.it

