

BANCA D'ITALIA

Supplements to the Statistical Bulletin
Monetary and Financial Indicators

Public Finance Statistics
in the European Union



New series

Year IX Number 62 - 31 December 1999

CONTENTS

General information

Introductory note

Figure 1 - Breakdown of the ratio of interest payments to GDP into the average cost of debt and the ratio of the average debt to GDP in the euro-area countries in 1993 and 1998

Figure 2 - Breakdown of the ratio of interest payments to GDP into the average cost of debt and the ratio of the average debt to GDP in the high-debt countries between 1990 and 1998

Table 1 - (ITUE0100) - Net borrowing/lending

Table 2 - (ITUE0110) - Primary net borrowing/lending

Table 3 - (ITUE0120) - Current account balance

Table 4 - (ITUE0130) - Capital account balance

Table 5 - (ITUE0140) - Gross public debt

Table 6 - (ITUE0150) - Total revenue

Table 7 - (ITUE0160) - Current revenue

Table 8 - (ITUE0170) - Tax revenue and social security contributions

Table 9 - (ITUE0180) - Tax revenue and social security contributions, excluding capital taxes

Table 10 - (ITUE0190) - Tax revenue

Table 11 - (ITUE0200) - Tax revenue, excluding capital taxes

Table 12 - (ITUE0210) - Direct taxes

Table 13 - (ITUE0220) - Indirect taxes

Table 14 - (ITUE0230) - Social security contributions

Table 15 - (ITUE0240) - Total expenditure

Table 16 - (ITUE0250) - Total expenditure, excluding interest payments

Table 17 - (ITUE0260) - Current expenditure

Table 18 - (ITUE0270) - Current expenditure, excluding interest payments

Table 19 - (ITUE0280) - Interest payments

Table 20 - (ITUE0290) - Government consumption

Table 21 - (ITUE0300) - Compensation of employees

Table 22 - (ITUE0310) - Intermediate consumption

Table 23 - (ITUE0320) - Current transfers

Table 24 - (ITUE0330) - Current transfers to households

Table 25 - (ITUE0340) - Current transfers to enterprises

Table 26 - (ITUE0350) - Investment

Methodological appendix

GENERAL INFORMATION

- I. - Unless indicated otherwise, figures have been computed by the Bank of Italy.
- II. - Symbols and Conventions:
- the phenomenon in question does not occur;
 - the phenomenon occurs but its value is not known;
 - .. the value is known but is nil or less than half the final digit shown.
- Figures in parentheses in roman type () are provisional, those in parentheses in italics () are estimated.
- III. - The tables are identified both by a number and by an alphanumeric code that defines the content of the table in the database in the electronic archive in which information to be released to the public is held. A similar code identifies the different aggregates shown in each table.
- IV. - The methodological notes in the last part of the Supplement are marked by electronic codes that refer to the tables and, within each table, to the individual aggregates. When the methodological note refers to a particular observation, it follows the variable code associated with the reference date of the observation.

OTHER SUPPLEMENTS TO THE STATISTICAL BULLETIN (*)

Istituzioni Finanziarie Monetarie: Banche e Fondi Comuni Monetari
(Monetary Financial Institutions: Banks and Money Market Funds; monthly)

Mercato Finanziario *(Financial Market; monthly)*

Finanza Pubblica *(Public Finances; monthly)*

Bilancia dei Pagamenti *(Balance of Payments; monthly)*

Aggregati Monetari e Creditizi dell'Area dell'Euro: le componenti italiane
(Monetary and Credit Aggregates of the Euro Area: the Italian components; monthly)

Conti Finanziari *(Financial Accounts; quarterly)*

Note Metodologiche e Informazioni Statistiche
(Methodological Notes and Statistical Information; irregular)

All the Supplements are available on the Internet at www.bancaditalia.it

(*) Not yet available in English. Most of the Supplements will be published in English starting in early 2000.

PUBLIC FINANCE STATISTICS IN THE EUROPEAN UNION (1980-1998) ⁽¹⁾

INTRODUCTORY NOTE

This series of the Supplement to the Statistical Bulletin provides an instrument for the analysis of developments in the public finances in the European Union. The document reports data on the general government economic accounts of the EU countries and compares them with statistics on the other leading industrial countries.

The series cover the period from 1980 to 1998. Thanks to the cooperation of the European Commission, it has been possible to reclassify some of the items referring to EU countries (consequently, the figures given in this Supplement for total revenue and expenditure are different from those published by the General Directorate for Economic and Financial Affairs); the data for the non-European G-7 countries (the United States, Japan and Canada) have been processed to increase their comparability with those of the EU countries (see the Methodological appendix). The series covering the EU countries are not entirely comparable since some of them have compiled some statistics using the new European system of national accounts, ESA95, instead of the earlier system, ESA79 (see the Methodological appendix).

The first part of the publication contains the series showing the economic accounts balances and the second contains the series concerning revenue and expenditure.

* * *

Interest expenditure of the euro-area countries - The reduction in interest rates has facilitated the adjustment of many European countries' public finances. This issue of the Supplement focuses on the interest expenditure of the euro-area countries. For the sake of the consistency of the analysis, the data considered in the Introductory note are all based on ESA79 (see table).

Between 1990 and 1993 interest expenditure rose in the euro-area countries from 4.9 to 5.6 per cent of GDP on average; subsequently the ratio gradually declined to 4.6 per cent in 1998. Interest expenditure declined in relation to GDP between 1993 and 1998 in all the euro-area countries except Finland, France and Germany. In general, the countries with the largest debts in relation to GDP were those that recorded the largest reductions. In particular, Belgium and Italy, the two countries with the highest debt-to-GDP ratios, saw interest expenditure fall from 10.9 and 12.1 per cent of GDP, respectively, in 1993 to 7.5 per cent in 1998.

The ratio of interest expenditure to GDP (I/GDP) can be decomposed into the product of the average cost of the debt (I/D) and the ratio of the average debt to GDP (D/GDP). The average debt in year t is computed as half the sum of the nominal debt outstanding at the end of years $t-1$ and t . The average cost of the debt is the ratio of interest expenditure to the average debt. In Figure 1 the average debt is shown on the horizontal axis and the average cost of the debt on the vertical axis. The isoquants represent the combinations of I/D and D/GDP that give the same value of I/GDP . On the map of the isoquants each country is represented by two points, corresponding to the values observed in 1993 and 1998.

(1) This issue of the Supplement was prepared by Raffaella Giordano, Paola Umaldi and Stefania Zotteri. We are grateful to the General Directorate for Economic and Financial Affairs of the European Commission, Eurostat and the OECD for permission to use their data.

The changes in the average cost of the debt and the ratio of the average debt to GDP contributed to the changes in the ratio of interest expenditure to GDP to a different extent in the various euro-area countries. In particular, the reduction in this was entirely due to the fall in the average cost of the debt in Italy and Spain, where the average debt rose in relation to GDP by respectively 7.5 percentage points, to 118.8 per cent, and 12.7 percentage points, to 66.4 per cent. By contrast, the average cost of the debt fell by 4.6 percentage points, to 6.3 per cent, in Italy and by 3.7 percentage points, to 6.1 per cent, in Spain; it also fell substantially in Portugal, from 10.4 to 6 per cent.

The reduction in the ratio of the average debt to GDP had a significant effect in Belgium, the Netherlands and especially Ireland. Between 1993 and 1998 the ratio fell from 130.5 to 116.2 per cent in Belgium, from 79.1 to 67.1 per cent in the Netherlands and from 90.2 to 53.2 per cent in Ireland, where the contraction in the debt ratio was primarily due to the rapid growth in GDP; the decrease in the average cost of the debt has been relatively limited (1.3 percentage points). In Belgium and the Netherlands the average cost of the debt fell by respectively 1.8 and 0.8 percentage points.

Figure 2 shows the movement between 1990 and 1998 of the ratio of interest expenditure to GDP, broken down into the two components referred to above, in the high-debt countries, i.e. those with a ratio of debt to GDP close to or more than 100 per cent in 1990 (Belgium, Ireland and Italy).

In Belgium the ratio of debt to GDP rose until 1994 and then declined. The ratio of interest expenditure to GDP rose slightly until 1993, after which it fell significantly until 1998. Between 1993 and 1995 the fall was primarily due to the decline in the average cost of the debt (from 8.2 to 6.9 per cent), whereas subsequently the predominant factor was the fall in the ratio of debt to GDP.

In Ireland interest expenditure and the debt both declined steadily in relation to GDP over the period in question (respectively from 7.5 to 3.1 per cent and from 95.9 to 53.2 per cent). The average cost of the debt fell from 8.1 per cent in 1990 to 5.8 per cent in 1998.

In Italy the ratio of the year-end debt to GDP fell without interruption between 1995 and 1998, from 125.3 to 118.7 per cent; applying ESA95 results in a reduction in the ratio of 2.1 percentage points in 1995 and 1.9 percentage points in 1998. By contrast, the ratio of the average debt to GDP increased gradually between 1990 and 1997 (apart from a slight reduction in 1996), rising from 91.6 to 122.2 per cent. The ratio of interest expenditure to GDP nonetheless declined significantly from 1994 onwards. The improvement was largely attributable to the decrease in the average cost of the debt, which was larger than in the other euro-area countries owing to the substantial fall in interest rates over the period in question in Italy, where the convergence of interest rates produced the greatest benefits, and to the maturity structure of the debt, which resulted in interest expenditure being highly sensitive to rate changes. Italy's long-term interest rate differential with respect to the EU countries with the lowest yields (Belgium, Germany, France, the Netherlands and Austria) was virtually eliminated; at the beginning of 1990 it had been on the order of 5 percentage points. Moreover, the maturity composition of the debt in Italy was marked by a high proportion of short-term and variable rate securities in the early nineties, when the share of general government gross debt with short maturities or variable rates was equal to around 67 per cent, compared with 39 per cent in Belgium and 9 per cent in Ireland.

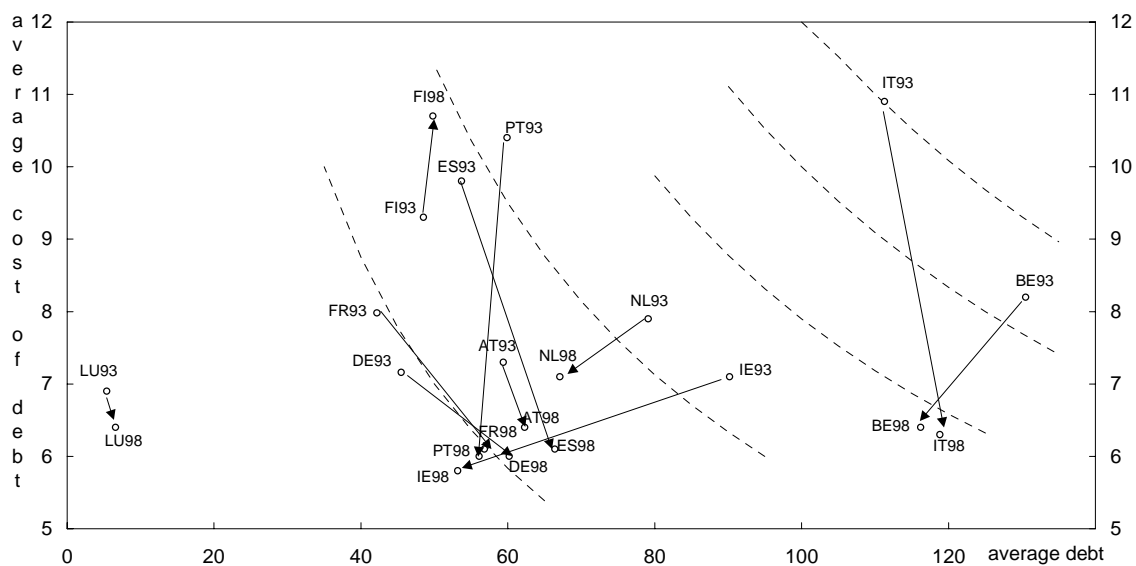
Interest payments, average cost of debt and average debt in the euro-area countries (1)

	1990	1991	1992	1993	1994	1995	1996	1997	1998
Interest payments (as a percentage of GDP)									
Italy	9.5	10.2	11.5	12.1	11.0	11.2	10.6	9.2	7.5
Belgium	10.5	10.1	10.8	10.9	10.2	9.0	8.6	7.9	7.5
Germany	2.6	2.7	3.2	3.3	3.3	3.8	3.7	3.7	3.6
Spain	3.9	3.8	4.3	5.1	4.7	5.4	4.9	4.4	3.9
France	2.9	3.0	3.3	3.4	3.6	3.7	3.8	3.6	3.5
Ireland	7.5	7.3	6.7	6.3	5.5	4.9	4.3	3.9	3.1
Luxembourg	0.5	0.4	0.3	0.4	0.3	0.3	0.3	0.3	0.4
Netherlands	6.0	6.2	6.3	6.3	5.9	6.0	5.6	5.2	4.8
Austria	4.1	4.2	4.3	4.3	4.1	4.4	4.4	4.0	4.0
Portugal	8.1	7.9	7.2	6.2	6.2	6.3	4.8	4.3	3.4
Finland	1.5	2.0	2.6	4.6	5.0	5.2	5.7	5.3	5.4
Average cost of debt									
Italy	10.3	10.6	11.2	10.9	9.2	9.1	8.7	7.6	6.3
Belgium	8.6	8.1	8.5	8.2	7.6	6.9	6.7	6.4	6.4
Germany	7.9	7.2	7.0	7.1	6.3	6.2	6.0
Spain	9.6	8.9	9.7	9.8	8.1	8.9	7.6	6.6	6.1
France	8.6	8.4	8.7	8.0	7.7	7.5	7.1	6.5	6.1
Ireland	8.1	8.0	7.6	7.1	6.4	6.3	6.0	6.4	5.8
Luxembourg	9.2	8.0	6.9	6.1	5.2	4.9	5.4	6.4
Netherlands	7.8	8.0	8.1	7.9	7.6	7.8	7.3	7.3	7.1
Austria	7.2	7.5	7.5	7.3	6.5	6.7	6.4	6.1	6.4
Portugal	13.5	12.7	12.0	10.4	10.2	10.1	7.6	6.9	6.0
Finland	10.1	10.2	8.1	9.3	8.8	9.1	10.0	9.8	10.7
Average debt (as a percentage of GDP)									
Italy	91.6	95.7	102.4	111.3	119.0	122.1	121.8	122.2	118.8
Belgium	121.9	123.7	125.0	130.5	131.0	129.5	127.0	121.7	116.2
Germany	41.3	45.5	47.9	53.4	58.8	60.3	60.2
Spain	41.9	43.5	45.5	53.7	60.0	62.3	66.5	68.0	66.4
France	34.0	34.9	37.2	42.2	45.8	49.5	53.2	55.7	56.8
Ireland	95.9	93.7	90.3	90.2	87.8	79.7	72.5	63.3	53.2
Luxembourg	4.3	4.5	5.4	5.6	5.6	6.2	6.4	6.6
Netherlands	76.5	76.9	77.6	79.1	76.7	76.3	75.8	71.6	67.1
Austria	56.1	56.0	56.5	59.4	62.5	66.1	68.3	65.6	62.3
Portugal	59.6	62.1	59.8	59.9	60.9	62.4	63.5	60.0	56.1
Finland	14.2	18.9	32.0	48.5	56.1	55.6	55.4	53.4	49.8

(1) Figures are on ESA79 basis. Rounding may cause discrepancies.

Figure 1

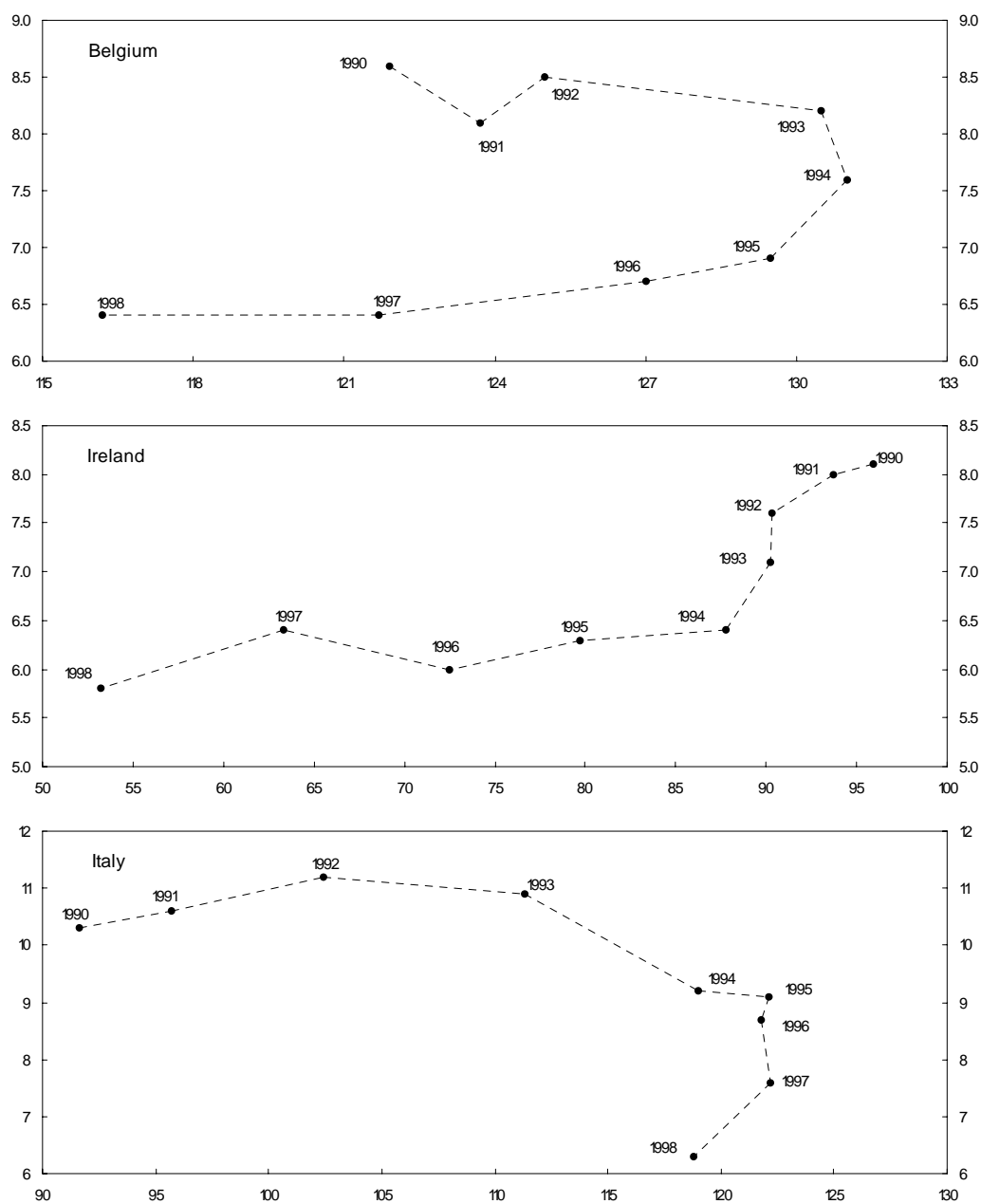
Breakdown of the ratio of interest payments to GDP into the average cost of debt and the ratio of the average debt to GDP in the euro-area countries in 1993 and 1998
(percentages)



(*) BE stands for Belgium; DE for Germany; ES for Spain; FR for France; IE for Ireland; IT for Italy; NL for Netherlands; AT for Austria; PT for Portugal; FI for Finland; LU for Luxembourg.

Figure 2

Breakdown of the ratio of interest payments to GDP into the average cost of debt and the ratio of the average debt to GDP in the high-debt countries between 1990 and 1998 (1)
(percentages)



(1) The values on the vertical axis refer to the average cost of debt; those on the horizontal axis refer to the ratio of average debt to GDP.

Table 1

ITUE0100

Net borrowing (+) /lending (-)

(as a percentage of GDP)

	1980	1981	1982	1983	1984	1985	1986	1987	1988	1989	1990	1991	1992	1993	1994	1995	1996	1997	1998
Italy S310028Y	8.3	11.4	11.2	10.5	11.5	12.3	11.4	11.0	10.7	9.8	11.1	10.1	9.6	9.5	9.2	7.7	7.0	2.8	2.7
Belgium S943755Y	8.7	12.8	10.9	11.6	9.6	9.1	9.4	7.6	6.8	6.2	5.4	6.3	7.1	7.3	4.9	4.0	3.1	1.9	1.3
Denmark S020287Y	3.2	6.8	8.9	7.1	4.0	2.0	-3.3	-2.4	-1.5	-0.3	1.1	2.5	2.3	2.9	2.7	2.4	0.9	-0.4	-0.8
Germany S051315Y	2.9	3.7	3.3	2.6	1.9	1.2	1.3	1.9	2.2	-0.1	2.1	3.3	2.8	3.5	2.6	3.3	3.4	2.7	2.1
Greece S095388Y	2.7	9.1	6.8	7.6	8.4	11.7	9.5	9.2	11.5	14.4	16.1	11.5	12.8	13.8	10.0	10.3	7.5	3.9	2.4
Spain S121934Y	2.6	3.9	5.6	4.7	5.4	6.4	5.7	3.9	3.3	3.6	4.2	4.4	4.0	6.8	6.2	7.1	4.6	2.6	1.8
France S167577Y	0.0	1.9	2.8	3.2	2.8	2.9	2.7	1.9	1.7	1.2	1.6	2.1	3.9	5.8	5.8	4.9	4.1	3.0	2.9
Ireland S215663Y	12.1	12.7	13.1	11.2	9.3	10.6	10.5	8.4	4.3	1.7	2.2	2.3	2.4	2.3	1.5	2.1	0.3	-1.1	-2.3
Luxembourg S260593Y	0.5	3.3	1.1	-2.1	-3.4	-6.5	-4.6	-2.9	-4.8	-1.9	-0.7	-1.6	-2.7	-1.8	-2.8	-2.9	-2.1
Netherlands S317355Y	4.2	5.4	6.6	5.8	5.5	3.6	5.1	5.9	4.6	4.8	5.1	2.9	3.9	3.2	3.8	4.0	2.0	0.9	0.9
Austria S366694Y	1.7	1.7	3.3	3.9	2.5	2.4	3.7	4.2	3.1	2.8	2.5	3.0	2.0	4.3	5.0	5.1	3.7	1.9	2.1
Portugal S411095Y	8.7	12.9	8.7	7.0	10.6	10.5	5.9	5.6	3.5	2.4	5.1	6.0	3.0	6.1	6.0	5.7	3.3	2.5	2.3
Finland S452925Y	-3.4	-4.4	-2.5	-1.0	-2.7	-2.9	-3.4	-1.0	-4.1	-6.3	-5.5	1.1	5.7	7.3	6.0	4.6	3.1	1.2	-1.0
Sweden S483728Y	4.0	5.3	7.0	5.0	2.9	3.8	1.3	-4.2	-3.5	-5.4	-4.2	1.1	7.7	12.2	10.3	6.9	3.5	0.7	-2.0
United Kingdom . S519512Y	3.4	2.7	2.5	3.4	3.9	2.9	2.5	1.7	-0.7	-1.0	1.6	2.9	6.7	8.2	6.9	5.7	4.5	1.9	-0.6
<i>Averages, including Italy</i>																			
Euro area S593237Y	3.4	5.1	5.3	5.0	4.9	4.8	4.7	4.5	4.1	3.1	4.2	4.6	4.7	5.6	5.1	4.8	4.2	2.5	2.1
EU S647188Y	3.4	4.8	5.0	4.9	4.7	4.5	4.1	3.7	3.1	2.2	3.6	4.3	5.2	6.2	5.5	5.0	4.2	2.3	1.5
<i>Averages, excluding Italy</i>																			
Euro area S673090Y	2.4	3.7	4.0	3.7	3.2	2.9	3.0	2.8	2.4	1.3	2.4	3.1	3.5	4.7	4.2	4.3	3.6	2.4	2.0
EU S727544Y	2.7	3.7	4.0	3.9	3.5	3.1	2.7	2.3	1.6	0.8	2.1	3.1	4.3	5.6	4.9	4.6	3.7	2.2	1.3
<i>France, Germany, United Kingdom . S804571Y</i>																			
United States ... S769114Y	1.6	1.3	4.1	5.0	3.8	4.2	4.5	3.6	3.1	2.8	3.8	4.5	5.6	4.7	3.3	2.9	2.0
Japan S808075Y	4.4	3.8	3.6	3.6	2.1	0.8	0.9	-0.5	-1.5	-2.5	-2.9	-2.9	-1.5	1.6	2.3	3.6	4.3
Canada S843163Y	3.1	1.7	5.8	6.9	6.6	7.4	6.0	4.2	3.1	3.4	4.6	7.3	8.1	7.7	5.6	4.4	2.0

Table 2

ITUE0110

Primary net borrowing (+) /lending (-)

(as a percentage of GDP)

	1980	1981	1982	1983	1984	1985	1986	1987	1988	1989	1990	1991	1992	1993	1994	1995	1996	1997	1998
Italy S885884Y	3.2	5.3	4.2	3.1	3.5	4.5	3.1	3.2	2.8	1.0	1.6	-0.1	-1.9	-2.6	-1.8	-3.8	-4.5	-6.7	-5.3
Belgium S896275Y	2.7	5.0	1.8	2.3	-0.2	-1.4	-1.6	-2.9	-3.2	-4.1	-5.1	-3.9	-3.8	-3.6	-5.3	-5.0	-5.5	-6.0	-6.2
Denmark S905480Y	-0.7	1.6	3.1	-0.8	-5.4	-7.7	-11.9	-10.4	-9.4	-7.8	-6.5	-5.0	-4.6	-4.6	-4.3	-4.1	-5.1	-6.1	-6.2
Germany S913830Y	1.0	1.4	0.6	-0.5	-1.1	-1.9	-1.7	-1.0	-0.7	-2.8	-0.6	0.6	-0.4	0.2	-0.7	-0.5	-0.3	-1.1	-1.5
Greece S922183Y	0.7	6.4	4.1	4.0	4.1	6.8	4.2	2.6	4.1	6.8	6.0	2.1	1.1	1.0	-4.1	-2.6	-4.6	-5.8	-6.7
Spain S931608Y	1.9	3.1	4.6	3.5	3.4	4.4	1.9	-0.5	0.0	-0.4	0.3	0.6	-0.3	1.7	1.5	1.7	-0.4	-1.8	-2.2
France S938574Y	-1.5	-0.1	0.7	0.6	0.1	0.0	-0.2	-0.9	-1.0	-1.5	-1.4	-0.9	0.7	2.4	2.2	1.2	0.3	-0.6	-0.6
Ireland S945133Y	5.8	5.7	4.6	2.3	0.4	0.9	1.4	-0.8	-4.0	-5.8	-5.3	-5.0	-4.3	-4.0	-4.0	-2.8	-4.0	-5.1	-5.4
Luxembourg S952464Y	-0.8	2.0	-0.4	-3.6	-4.9	-7.5	-5.5	-3.9	-5.3	-2.2	-1.1	-2.0	-3.1	-2.1	-3.1	-3.3	-2.5
Netherlands S959785Y	0.4	0.8	1.3	0.0	-0.6	-2.7	-1.3	-0.5	-1.7	-1.3	-0.9	-3.3	-2.4	-3.0	-2.1	-2.0	-3.5	-4.4	-3.8
Austria S968741Y	-0.8	-1.0	0.3	0.9	-0.8	-1.1	0.1	0.3	-0.9	-1.2	-1.6	-1.2	-2.3	-0.1	0.9	0.7	-0.6	-2.1	-1.9
Portugal S976418Y	6.0	8.1	3.5	0.9	3.7	2.8	-2.0	-2.2	-3.4	-3.8	-3.0	-1.8	-4.3	-0.1	-0.2	-0.6	-1.5	-1.7	-1.1
Finland S985982Y	-4.4	-5.6	-3.8	-2.5	-4.4	-4.7	-5.1	-2.7	-5.7	-7.8	-7.0	-0.9	3.0	2.7	0.9	-0.6	-2.6	-4.1	-6.4
Sweden S993719Y	-0.1	0.0	0.1	-2.2	-4.7	-4.5	-6.1	-10.7	-9.1	-10.7	-9.1	-4.0	2.4	6.1	3.5	0.5	-3.7	-5.5	-9.0
United Kingdom . S002936Y	-1.3	-2.4	-2.6	-1.4	-1.0	-2.1	-2.1	-2.7	-4.7	-5.1	-2.3	-0.4	3.5	5.0	3.5	2.3	0.8	-1.6	-3.8
<i>Averages, including Italy</i>																			
Euro area S010910Y	0.8	1.9	1.7	1.0	0.5	0.4	0.0	-0.1	-0.3	-1.6	-0.7	-0.4	-0.8	0.0	-0.3	-0.7	-1.4	-2.6	-2.5
EU S020645Y	0.4	1.1	1.0	0.5	0.0	-0.3	-0.8	-1.1	-1.5	-2.5	-1.3	-0.6	-0.1	0.8	0.2	-0.4	-1.3	-2.6	-3.0
<i>Averages, excluding Italy</i>																			
Euro area S029668Y	0.3	1.1	1.1	0.4	-0.2	-0.7	-0.8	-1.0	-1.2	-2.3	-1.3	-0.5	-0.5	0.6	0.0	-0.1	-0.8	-1.7	-1.9
EU S043066Y	0.0	0.5	0.4	0.0	-0.6	-1.2	-1.5	-1.9	-2.3	-3.2	-1.8	-0.7	0.2	1.3	0.5	0.1	-0.8	-2.0	-2.7
<i>France, Germany, United Kingdom . S052960Y</i>																			
United States ... S074816Y	-1.6	-2.4	-0.1	0.6	-0.9	-0.7	-0.5	-1.3	-1.8	-2.1	-1.2	-0.6	0.7	0.1	-1.1	-1.7	-2.5
Japan S082587Y	1.3	0.3	-0.2	-0.6	-2.3	-3.6	-3.5	-4.9	-5.7	-6.5	-6.8	-6.6	-5.2	-2.1	-1.4	-0.2	0.6
Canada S092710Y	-2.4	-4.6	-1.5	-0.5	-1.3	-1.1	-2.6	-4.2	-5.3	-5.6	-5.0	-2.3	-1.4	-1.6	-3.6	-5.4	-7.4

Table 3

ITUE0120

Current account balance

(as a percentage of GDP)

	1980	1981	1982	1983	1984	1985	1986	1987	1988	1989	1990	1991	1992	1993	1994	1995	1996	1997	1998
Italy S100732Y	4.2	6.8	6.9	6.6	7.0	6.5	6.3	5.8	5.8	5.1	5.8	5.8	7.1	5.5	5.5	3.8	3.7	0.2	-0.3
Belgium S141186Y	3.8	7.7	6.4	7.6	6.1	5.9	6.6	5.0	4.2	4.4	3.7	4.5	5.1	5.2	3.1	2.1	1.5	0.1	-0.8
Denmark S176966Y	-0.7	2.7	5.3	3.9	1.4	-0.9	-5.6	-4.6	-3.3	-2.0	-0.2	1.0	0.4	1.0	0.8	0.4	-1.6	-2.4	-2.6
Germany S187086Y	-2.4	-1.1	-1.1	-1.4	-2.0	-2.6	-2.4	-1.7	-1.3	-3.6	-1.3	-1.2	-1.5	-0.5	-1.0	0.0	0.4	0.0	-0.6
Greece S197226Y	0.1	6.0	3.8	3.8	4.3	7.5	5.9	6.1	7.7	10.3	9.6	6.5	7.1	8.1	7.2	7.2	5.1	1.8	0.7
Spain S242999Y	-0.6	-0.1	0.5	-0.1	0.7	-0.3	0.3	-0.9	-1.8	-2.2	-1.7	-1.2	-0.7	1.7	1.5	2.4	0.9	-1.0	-2.2
France S252252Y	-3.8	-1.7	-0.9	-0.4	-0.6	-0.5	-0.6	-1.5	-1.9	-2.4	-2.5	-1.5	0.4	2.3	2.1	1.5	1.0	0.5	-0.1
Ireland S285185Y	5.1	6.4	7.3	6.2	5.2	6.5	6.5	5.5	2.6	0.1	0.8	1.2	1.2	1.0	-0.6	0.2	-1.6	-2.9	-4.1
Luxembourg S339068Y	-7.4	-5.0	-6.2	-9.4	-9.4	-11.6	-9.1	-7.9	-7.7	-7.6	-6.8
Netherlands S375977Y	-1.4	-0.3	1.2	1.1	0.6	-0.9	0.3	0.9	0.4	1.0	1.6	-0.3	0.9	0.4	1.0	1.1	-0.2	-1.6	-1.5
Austria S407859Y	-4.3	-4.4	-2.3	-1.9	-3.1	-3.2	-2.0	-1.0	-2.0	-1.9	-2.2	-1.8	-2.8	-0.8	0.0	0.4	-0.8	-1.7	-1.8
Portugal S441445Y	3.6	7.1	2.7	1.9	6.5	6.2	1.8	2.1	0.0	-1.0	1.4	2.6	-0.8	2.1	2.9	2.4	0.1	-0.9	-1.5
Finland S480179Y	-7.4	-8.4	-6.7	-5.2	-6.5	-6.6	-7.1	-5.0	-8.7	-9.6	-9.6	-3.4	1.6	4.0	2.3	1.3	-0.5	-1.6	-4.0
Sweden S509819Y	-0.7	0.4	1.8	0.1	-0.9	0.1	-2.1	-5.4	-5.9	-8.0	-6.5	-1.5	3.4	7.1	6.9	4.0	1.1	-1.6	-3.2
United Kingdom . S925503Y	0.5	0.5	0.4	0.7	1.1	0.5	0.6	0.0	-1.9	-3.6	-2.9	-0.7	3.3	4.9	4.0	2.6	2.2	-0.1	-2.8
<i>Averages, including Italy</i>																			
Euro area S533813Y	-1.2	0.6	0.9	1.0	0.8	0.4	0.5	0.4	0.1	-0.9	0.0	0.4	1.1	1.7	1.5	1.4	1.1	-0.2	-0.8
EU S542882Y	-0.9	0.7	1.0	1.0	0.9	0.5	0.4	0.1	-0.4	-1.4	-0.5	0.3	1.6	2.4	2.0	1.7	1.2	-0.2	-1.2
<i>Averages, excluding Italy</i>																			
Euro area S552936Y	-2.3	-0.8	-0.4	-0.4	-0.7	-1.1	-0.9	-1.0	-1.4	-2.4	-1.5	-1.0	-0.4	0.9	0.6	0.9	0.5	-0.3	-0.9
EU S582462Y	-1.6	-0.3	0.1	0.1	-0.2	-0.6	-0.7	-1.0	-1.6	-2.7	-1.8	-0.8	0.5	1.9	1.5	1.3	0.8	-0.3	-1.4
France, Germany, United Kingdom . S591498Y	-2.1	-0.8	-0.6	-0.5	-0.7	-1.0	-1.0	-1.2	-1.7	-3.2	-2.1	-1.2	0.3	1.6	1.1	1.0	1.0	0.1	-1.1
United States ... S600264Y	0.2	0.0	2.9	3.6	2.5	2.7	2.9	2.1	1.7	1.2	2.2	2.8	4.0	3.1	1.8	1.4	0.5
Japan S631814Y	-3.2	-3.7	-3.5	-2.9	-3.9	-4.9	-4.8	-6.3	-7.4	-8.4	-8.9	-9.3	-8.2	-6.3	-5.6	-4.2	-4.0
Canada S641427Y	-0.3	-2.0	1.6	2.7	2.6	3.1	2.2	0.9	-0.2	0.1	1.1	3.8	4.9	4.8	2.7	1.6	-0.7

Table 4

ITUE0130

Capital account balance

(as a percentage of GDP)

	1980	1981	1982	1983	1984	1985	1986	1987	1988	1989	1990	1991	1992	1993	1994	1995	1996	1997	1998
Italy S682058Y	4.1	4.6	4.3	3.9	4.5	5.8	5.1	5.2	4.9	4.7	5.3	4.3	2.5	4.0	3.7	3.9	3.3	2.6	3.0
Belgium S707822Y	4.9	5.2	4.5	4.1	3.5	3.2	2.8	2.6	2.6	1.8	1.8	1.8	2.0	2.1	1.9	1.9	1.6	1.8	2.1
Denmark S714808Y	3.9	4.1	3.6	3.1	2.6	2.8	2.3	2.2	1.7	1.7	1.3	1.4	1.9	1.9	1.9	2.1	2.4	2.1	1.8
Germany S722040Y	5.3	4.8	4.4	4.0	3.9	3.8	3.7	3.6	3.4	3.5	3.4	4.5	4.3	4.0	3.6	3.3	2.9	2.6	2.7
Greece S749638Y	2.6	3.1	3.0	3.8	4.1	4.2	3.6	3.1	3.8	4.2	6.6	5.0	5.7	5.7	2.8	3.1	2.5	2.1	1.7
Spain S756472Y	3.2	4.0	5.1	4.8	4.7	6.7	5.5	4.8	5.2	5.8	5.9	5.6	4.8	5.2	4.7	4.8	3.7	3.5	3.9
France S766305Y	3.8	3.6	3.7	3.5	3.3	3.4	3.3	3.4	3.6	3.7	4.0	3.5	3.5	3.5	3.7	3.4	3.2	2.5	3.1
Ireland S773219Y	6.9	6.4	5.8	5.0	4.2	4.1	4.0	2.9	1.7	1.6	1.4	1.1	1.2	1.3	2.2	2.0	1.9	1.8	1.7
Luxembourg S783357Y	7.9	8.3	7.3	7.4	6.0	5.1	4.5	5.1	4.9	4.7	4.6
Netherlands S790856Y	5.6	5.7	5.4	4.7	4.9	4.5	4.8	5.0	4.2	3.7	3.5	3.2	3.0	2.9	2.8	2.9	2.2	2.4	2.4
Austria S799778Y	6.0	6.1	5.6	5.8	5.6	5.6	5.7	5.2	5.0	4.7	4.7	4.8	4.7	5.1	5.0	4.7	4.5	3.6	3.9
Portugal S825622Y	5.1	5.8	6.0	5.1	4.2	4.3	4.1	3.4	3.6	3.4	3.7	3.4	3.8	4.0	3.2	3.4	3.2	3.4	3.8
Finland S835296Y	4.1	4.0	4.3	4.2	3.8	3.7	3.7	3.9	4.6	3.3	4.1	4.5	4.0	3.3	3.7	3.3	3.6	2.8	3.0
Sweden S865654Y	4.7	4.9	5.1	5.0	3.8	3.7	3.4	1.1	2.4	2.7	2.3	2.6	4.4	5.2	3.4	3.0	2.4	2.4	1.2
United Kingdom . S900419Y	2.9	2.2	2.1	2.7	2.8	2.3	1.9	1.7	1.2	2.7	4.5	3.6	3.4	3.2	2.9	3.1	2.3	2.0	2.1
<i>Averages, including Italy</i>																			
Euro area S927021Y	4.6	4.5	4.4	4.0	4.1	4.4	4.1	4.1	4.0	4.0	4.2	4.2	3.6	3.9	3.6	3.5	3.1	2.7	3.0
EU S934952Y	4.3	4.1	4.0	3.8	3.8	4.0	3.7	3.6	3.5	3.7	4.1	4.0	3.6	3.8	3.5	3.4	2.9	2.5	2.7
<i>Averages, excluding Italy</i>																			
Euro area S944182Y	4.7	4.5	4.4	4.1	4.0	4.1	3.9	3.8	3.8	3.8	3.9	4.1	3.9	3.8	3.6	3.4	3.0	2.7	2.9
EU S957807Y	4.3	4.0	4.0	3.8	3.7	3.7	3.5	3.3	3.2	3.5	3.9	3.9	3.8	3.8	3.4	3.3	2.9	2.5	2.7
France, Germany, United Kingdom . S966231Y	4.2	3.6	3.5	3.4	3.4	3.2	3.1	3.0	2.9	3.3	3.9	4.0	3.8	3.7	3.4	3.3	2.9	2.4	2.6
United States ... S974698Y	1.4	1.3	1.2	1.4	1.3	1.5	1.6	1.5	1.4	1.6	1.6	1.7	1.6	1.6	1.5	1.5	1.5
Japan S011081Y	7.6	7.5	7.1	6.5	6.0	5.7	5.7	5.8	5.9	5.9	6.0	6.4	6.7	7.9	7.9	7.8	8.3
Canada S020162Y	3.4	3.7	4.2	4.2	4.0	4.3	3.8	3.3	3.3	3.3	3.5	3.5	3.2	2.9	2.9	2.8	2.7

Table 5

ITUE0140

Gross public debt

(as a percentage of GDP)

	1980	1981	1982	1983	1984	1985	1986	1987	1988	1989	1990	1991	1992	1993	1994	1995	1996	1997	1998
Italy S026792Y	57.7	59.9	64.7	70.8	76.3	82.7	86.5	90.6	92.9	95.8	98.0	101.5	108.7	119.1	124.9	123.2	122.5	120.2	116.8
Belgium S051544Y	77.1	90.7	101.0	111.8	116.2	120.2	124.9	128.8	128.8	126.6	126.0	128.4	130.6	137.6	135.1	132.2	128.0	123.4	117.3
Denmark S074754Y	38.5	51.1	63.9	73.4	73.4	70.4	62.3	58.3	62.0	59.8	59.7	64.5	68.6	80.7	76.5	72.2	67.4	63.6	58.1
Germany S103320Y	31.7	35.4	38.7	40.2	41.0	41.7	41.6	42.6	43.1	41.8	43.8	40.9	43.6	47.5	49.9	58.3	60.8	61.5	61.0
Greece S138893Y	23.8	28.3	31.9	36.6	43.9	51.6	53.7	59.7	65.8	69.2	90.1	92.3	98.8	111.6	109.3	110.1	112.2	109.4	106.5
Spain S165996Y	17.5	21.4	26.6	32.0	38.2	43.7	45.1	45.5	40.5	41.9	43.9	44.6	47.0	58.8	61.3	64.2	68.6	67.5	65.6
France S190423Y	20.1	22.2	25.8	27.3	29.5	31.0	31.4	33.6	33.8	34.5	35.5	35.8	39.9	45.4	48.6	52.8	55.7	58.1	58.5
Ireland S223733Y	70.4	76.0	85.4	95.4	99.6	102.5	114.0	115.1	108.5	100.1	93.3	92.6	89.5	93.1	86.5	78.9	69.4	61.3	52.1
Luxembourg S247630Y	12.5	13.0	12.9	13.7	13.6	13.0	12.5	11.0	8.8	7.2	4.6	4.0	4.9	5.9	5.5	5.8	6.4	6.4	6.7
Netherlands S271368Y	46.9	50.9	56.5	62.7	66.8	71.5	73.5	76.1	79.3	79.3	79.1	79.0	79.9	81.1	77.8	79.0	77.0	71.2	67.7
Austria S299890Y	36.6	38.4	40.8	45.2	47.8	49.8	54.3	58.2	59.6	58.8	58.0	58.2	58.1	62.8	65.6	69.4	69.8	64.3	63.1
Portugal S327877Y	32.4	41.3	44.3	49.4	54.5	61.9	68.0	65.5	65.1	63.4	65.5	67.3	59.9	63.2	63.8	65.9	64.9	61.7	57.9
Finland S356827Y	11.6	11.9	14.3	15.9	15.7	16.4	17.1	18.2	17.4	15.0	14.5	23.1	41.5	58.0	59.6	58.1	57.8	54.9	49.6
Sweden S394303Y	41.0	49.3	58.9	62.8	64.3	63.8	63.5	56.2	50.4	45.3	43.3	52.8	66.8	75.8	79.0	77.6	76.7	76.7	75.1
United Kingdom . S425398Y	54.3	54.5	53.4	53.7	55.7	53.8	52.0	49.5	43.9	38.2	35.5	35.7	41.8	48.6	50.6	53.0	53.7	52.1	49.4
<i>Averages, including Italy</i>																			
Euro area S451046Y	35.2	38.6	42.8	46.7	49.7	52.6	54.3	56.6	56.9	57.2	58.6	58.7	62.1	67.1	69.3	72.6	74.9	74.7	73.0
EU S462452Y	38.3	41.8	45.4	48.8	51.6	53.6	54.4	55.6	54.9	54.0	55.1	55.7	60.0	65.7	67.7	70.6	72.5	71.4	69.4
<i>Averages, excluding Italy</i>																			
Euro area S487580Y	30.5	33.9	37.8	40.9	43.1	45.1	46.1	47.8	47.6	47.0	48.2	47.5	50.5	56.0	57.9	63.0	64.8	64.6	63.4
EU S519465Y	35.4	39.0	42.2	44.9	47.1	48.3	48.4	48.9	47.6	45.9	46.6	46.8	50.9	56.9	58.6	62.9	64.3	63.4	61.7
France, Germany, United Kingdom . S554391Y	33.9	36.5	38.7	39.8	41.4	41.7	40.8	41.4	40.3	38.4	38.9	38.0	42.0	47.1	49.6	55.5	57.6	58.0	57.1
United States ... S575750Y	38.0	37.1	41.8	45.0	46.7	51.1	54.2	55.5	55.9	55.8	57.2	61.7	64.1	65.5	64.7	64.3	63.6
Japan S612452Y	49.6	54.2	58.0	63.4	64.5	65.3	66.7	68.9	65.5	62.6	61.4	58.2	59.8	63.0	69.4	76.0	81.0
Canada S638539Y	43.9	44.7	49.7	55.3	58.9	64.0	68.0	68.6	68.5	69.7	72.6	79.8	87.5	94.4	97.1	99.1	99.1

Table 6

ITUE0150

Total revenue

(as a percentage of GDP)

	1980	1981	1982	1983	1984	1985	1986	1987	1988	1989	1990	1991	1992	1993	1994	1995	1996	1997	1998
Italy S693581Y	33.9	35.1	37.4	39.5	38.6	38.9	39.7	39.8	40.1	42.0	42.7	43.8	46.5	48.3	45.7	45.6	46.0	48.2	46.5
Belgium S740406Y	48.7	49.5	51.5	51.0	51.7	51.6	50.7	50.8	49.2	48.0	48.2	48.6	48.9	50.0	50.9	50.3	50.6	50.9	50.6
Denmark S763483Y	51.1	51.2	50.3	52.6	54.2	55.4	56.8	57.3	60.6	59.5	57.6	57.3	58.3	60.3	60.9	60.7	59.9	60.0	59.6
Germany S776048Y	45.6	45.8	46.4	45.8	45.9	46.3	45.5	45.3	44.5	45.4	43.6	44.5	45.8	46.3	46.8	47.2	46.3	45.8	45.4
Greece S787311Y
Spain S797758Y	30.5	31.8	31.9	33.8	33.5	35.8	36.6	38.2	37.4	39.1	39.4	40.3	42.1	42.3	41.3	39.9	40.4	41.0	41.3
France S827766Y	46.8	47.7	48.6	49.3	50.2	50.3	49.9	50.3	49.8	49.2	49.7	49.9	50.0	50.4	50.2	50.6	51.8	52.3	52.1
Ireland S837042Y	37.2	38.3	40.0	41.6	42.1	41.4	41.4	41.7	41.0	37.7	37.8	38.7	38.6	38.6	38.5	36.1	35.9	35.4	34.8
Luxembourg S865532Y	50.1	50.7	50.6	53.0	51.4	52.9	49.6	50.7
Netherlands S905894Y	52.9	53.6	54.5	55.4	54.6	54.7	53.1	53.9	53.5	50.5	50.4	53.2	52.7	53.6	50.9	49.2	49.1	49.4	47.9
Austria S938562Y	46.2	47.4	46.5	45.8	47.5	48.6	48.2	48.0	48.0	46.9	48.0	48.5	50.2	50.9	49.6	50.2	51.0	50.2	49.1
Portugal S949405Y	40.8	31.1	33.1	35.8	37.7	40.8	34.7	34.1	35.1	35.8	36.6	38.3	41.7	39.9	39.1	40.1	42.0	42.7	43.3
Finland S958917Y	42.4	44.6	44.1	44.2	45.7	47.7	48.9	47.0	49.5	49.8	52.9	55.1	55.9	55.8	56.2	55.4	56.7	54.8	54.6
Sweden S991128Y	65.3	64.8	61.6	60.8	60.3	59.4	59.0	62.7	62.8	64.6
United Kingdom . S024753Y	40.2	42.3	42.8	42.0	41.8	41.8	40.7	39.9	40.0	42.6	42.1	41.7	40.2	38.8	39.3	40.4	40.2	40.5	41.3
<i>Averages, including Italy</i>																			
Euro area S033913Y	43.2	43.7	44.5	45.2	45.2	45.7	45.4	45.5	45.0	45.3	45.2	45.9	47.1	47.9	47.4	47.3	47.5	47.8	47.2
EU S059941Y	42.8	43.6	44.4	44.8	44.8	45.3	44.9	44.9	44.5	45.9	45.7	46.1	46.8	47.2	46.8	47.0	47.2	47.3	47.0
<i>Averages, excluding Italy</i>																			
Euro area S069407Y	45.1	45.5	46.2	46.6	46.9	47.4	46.8	47.0	46.3	46.2	45.8	46.5	47.3	47.8	47.7	47.7	47.8	47.7	47.4
EU S078546Y	44.3	45.0	45.6	45.8	46.0	46.5	46.0	46.0	45.4	46.7	46.2	46.5	46.9	47.0	47.0	47.2	47.4	47.1	47.0
France, Germany, United Kingdom . S088390Y	44.6	45.4	46.1	45.8	46.2	46.3	45.8	45.6	45.0	45.9	45.2	45.4	45.7	45.8	46.1	46.7	46.6	46.2	46.2
United States ... S099700Y
Japan S108979Y
Canada S117981Y

Table 7

ITUE0160

Current revenue

(as a percentage of GDP)

	1980	1981	1982	1983	1984	1985	1986	1987	1988	1989	1990	1991	1992	1993	1994	1995	1996	1997	1998
Italy S148770Y	33.6	34.8	36.5	38.3	38.1	38.6	39.4	39.5	39.8	41.6	42.4	43.4	44.3	47.4	45.2	44.7	45.5	47.2	45.9
Belgium S156348Y	48.3	49.1	51.2	50.7	51.4	51.3	50.4	50.5	48.9	47.6	47.9	48.3	48.6	49.6	50.2	49.9	50.1	50.4	50.1
Denmark S181627Y	50.4	50.6	49.8	52.0	53.6	54.8	56.5	56.9	60.2	59.2	57.0	56.6	57.9	59.9	60.5	59.3	59.9	59.4	59.0
Germany S188837Y	45.1	45.3	46.0	45.4	45.6	46.0	45.2	45.0	44.2	45.1	43.3	44.2	45.5	45.9	46.4	46.7	45.9	45.4	44.9
Greece S198914Y	26.5	25.9	28.9	30.0	30.7	30.7	32.0	32.8	31.4	30.0	32.9	33.8	34.6	35.9	37.4	38.5	38.8	39.5	40.3
Spain S206464Y	30.3	31.6	31.7	33.6	33.3	35.4	36.1	37.8	36.8	38.4	38.8	39.5	41.3	41.5	40.3	38.6	39.4	40.0	40.3
France S213882Y	46.5	47.3	48.2	48.9	49.8	49.9	49.4	49.8	49.2	48.7	49.1	49.0	49.0	49.7	49.3	49.9	51.1	51.5	51.3
Ireland S224276Y	35.9	36.8	38.8	40.5	41.1	40.3	40.5	40.6	39.9	36.7	36.2	36.8	36.9	36.7	37.1	34.2	34.1	33.7	33.1
Luxembourg S252008Y	49.9	50.6	50.4	52.8	51.1	52.7	49.4	50.5	46.7	45.6	44.4
Netherlands S259459Y	52.5	53.2	54.1	55.0	54.2	54.4	52.8	53.6	53.2	50.2	50.1	52.8	52.4	53.2	50.5	48.8	48.6	49.0	47.4
Austria S269250Y	46.1	47.3	46.4	45.7	47.4	48.5	48.1	47.9	47.9	46.8	47.9	48.4	50.1	50.8	49.5	50.1	50.9	50.1	49.0
Portugal S278646Y	28.9	30.9	32.9	35.5	34.7	34.0	34.0	33.3	34.2	34.3	35.1	36.4	39.5	37.9	37.3	38.1	40.0	40.7	41.3
Finland S285377Y	42.3	44.5	44.0	44.1	45.6	47.4	48.8	46.8	49.3	49.6	52.7	54.9	55.6	55.5	56.0	55.1	56.3	54.5	54.3
Sweden S292224Y	57.6	58.9	59.4	61.1	60.6	61.1	61.9	63.6	62.9	65.1	64.6	61.4	60.6	60.1	59.2	58.8	62.5	62.6	64.4
United Kingdom . S298952Y	40.0	42.0	42.6	41.8	41.6	41.5	40.4	39.6	39.7	42.3	41.8	41.4	40.0	38.6	39.0	40.1	39.8	40.2	41.0
<i>Averages, including Italy</i>																			
Euro area S316187Y	42.7	43.3	44.1	44.7	44.8	45.3	45.0	45.2	44.6	44.9	44.7	45.4	46.2	47.3	46.8	46.7	46.9	47.1	46.6
EU S327111Y	42.7	43.5	44.2	44.7	44.8	45.2	45.0	45.1	44.7	45.3	45.1	45.4	45.9	46.5	46.2	46.3	46.5	46.6	46.3
<i>Averages, excluding Italy</i>																			
Euro area S333942Y	44.5	45.1	45.8	46.2	46.5	47.0	46.4	46.6	45.9	45.8	45.4	45.9	46.7	47.2	47.1	47.0	47.2	47.1	46.7
EU S343089Y	44.1	44.9	45.5	45.8	46.1	46.5	46.1	46.2	45.6	46.1	45.6	45.8	46.2	46.4	46.3	46.5	46.7	46.5	46.4
France, Germany, United Kingdom . S350708Y	44.2	45.0	45.7	45.5	45.9	46.0	45.4	45.2	44.6	45.5	44.8	44.9	45.2	45.4	45.6	46.2	46.1	45.7	45.7
United States ... S358286Y	30.6	31.3	30.8	30.4	30.3	30.8	31.0	31.7	31.3	31.5	31.5	32.2	31.0	31.2	31.5	31.9	32.4
Japan S365596Y	27.6	29.0	29.4	29.6	30.2	30.8	31.0	32.5	32.8	33.1	34.2	33.8	33.2	32.1	32.1	32.0	31.7
Canada S942259Y	36.9	39.3	39.9	39.4	39.3	39.2	40.1	40.4	40.9	41.1	42.7	43.5	43.7	42.8	42.6	42.7	43.3

Table 8

ITUE0170

Tax revenue and social security contributions

(as a percentage of GDP)

	1980	1981	1982	1983	1984	1985	1986	1987	1988	1989	1990	1991	1992	1993	1994	1995	1996	1997	1998
Italy S378793Y	31.3	32.3	34.8	36.8	35.8	35.7	36.1	36.7	37.2	39.0	39.5	40.5	43.0	44.4	41.6	42.2	42.6	44.6	43.2
Belgium S404947Y	46.1	46.7	48.4	48.4	49.2	49.3	48.7	48.9	47.5	46.2	46.4	46.7	47.1	48.2	49.1	48.8	48.7	49.3	49.1
Denmark S442814Y	45.6	45.5	44.7	46.6	47.6	48.9	50.6	51.4	53.2	51.8	49.6	49.4	49.9	51.5	52.9	52.4	52.5	52.7	52.7
Germany S452001Y	42.9	42.8	42.9	42.4	42.6	42.9	42.2	42.4	42.0	42.5	40.7	41.6	42.4	43.0	43.5	44.0	43.4	42.9	42.5
Greece S483969Y
Spain S495030Y	27.0	28.0	27.9	30.0	30.1	31.3	32.1	34.3	33.3	35.2	35.3	35.6	37.4	36.6	36.2	35.1	35.9	36.3	36.6
France S526523Y	43.4	43.7	44.6	45.4	46.4	46.3	45.8	46.2	45.7	45.4	45.4	45.7	45.6	46.0	46.1	46.6	47.9	48.3	48.2
Ireland S551835Y	32.6	33.7	35.2	36.6	37.5	36.5	37.3	37.5	37.1	34.6	34.1	34.4	34.5	34.5	35.2	32.5	32.5	32.2	31.8
Luxembourg S581226Y	43.4	43.9	44.1	47.2	45.8	46.9	44.4	44.8	43.0	41.7	40.2
Netherlands S590519Y	46.1	45.5	46.5	47.4	45.9	45.5	45.8	48.2	48.5	45.5	45.2	47.6	47.6	48.7	46.5	45.3	45.1	45.8	44.9
Austria S625790Y	43.4	44.3	43.4	42.9	44.6	45.6	45.4	45.0	45.0	43.9	43.5	44.0	45.3	46.3	45.1	45.6	46.9	47.2	46.4
Portugal S659293Y	26.9	28.6	30.3	32.3	31.6	31.4	31.5	30.4	31.3	31.6	32.3	33.5	35.9	34.8	34.7	35.3	36.1	36.6	37.4
Finland S685490Y	38.6	40.6	39.7	39.5	40.8	42.4	43.8	41.9	44.2	44.1	46.6	47.8	47.6	46.9	48.8	47.5	48.8	47.5	47.9
Sweden S716152Y	56.5	56.0	53.0	51.5	50.7	50.5	50.5	52.9	54.1	55.9
United Kingdom . S750052Y	33.8	35.7	36.0	35.8	35.9	35.6	35.1	34.5	34.8	38.9	38.7	38.5	37.4	36.2	36.6	37.6	37.6	37.9	39.1
<i>Averages, including Italy</i>																			
Euro area S780034Y	39.8	40.0	40.8	41.5	41.5	41.7	41.5	42.0	41.7	41.9	41.5	42.2	43.2	43.8	43.5	43.7	43.9	44.3	43.7
EU S789691Y	38.9	39.4	40.0	40.6	40.7	40.8	40.8	41.1	40.8	42.2	41.8	42.2	42.8	43.1	42.9	43.2	43.5	43.7	43.5
<i>Averages, excluding Italy</i>																			
Euro area S798857Y	41.5	41.7	42.1	42.6	42.9	43.2	42.9	43.4	42.9	42.7	42.1	42.6	43.2	43.7	43.8	44.0	44.2	44.2	43.9
EU S810542Y	40.1	40.5	40.9	41.3	41.6	41.8	41.7	42.0	41.5	42.8	42.2	42.5	42.7	42.9	43.1	43.4	43.6	43.5	43.5
France, Germany, United Kingdom . S819073Y	40.7	41.1	41.5	41.5	42.0	41.9	41.6	41.6	41.2	42.5	41.7	42.1	42.2	42.3	42.7	43.4	43.4	43.1	43.2
United States ... S835731Y
Japan S835731Y
Canada S846027Y

Table 9

ITUE0180

Tax revenue and social security contributions, excluding capital taxes

(as a percentage of GDP)

	1980	1981	1982	1983	1984	1985	1986	1987	1988	1989	1990	1991	1992	1993	1994	1995	1996	1997	1998
Italy S883938Y	31.2	32.2	34.3	35.7	35.5	35.6	36.0	36.6	37.1	38.8	39.4	40.3	41.0	43.7	41.5	41.6	42.3	43.9	42.8
Belgium S911280Y	45.7	46.3	48.1	48.1	48.9	49.0	48.4	48.6	47.2	45.9	46.1	46.4	46.8	47.8	48.7	48.4	48.4	49.0	48.8
Denmark S918472Y	45.3	45.3	44.5	46.4	47.4	48.7	50.4	51.1	52.9	51.5	49.3	49.1	49.6	51.2	52.7	52.2	52.5	52.5	52.5
Germany S926608Y	42.8	42.7	42.8	42.3	42.5	42.8	42.1	42.3	41.9	42.4	40.6	41.5	42.3	42.9	43.4	43.9	43.3	42.8	42.4
Greece S951547Y	24.6	24.2	27.5	28.5	29.1	29.0	30.7	31.3	30.0	28.4	31.2	31.6	32.1	32.8	33.6	34.3	34.3	35.0	36.0
Spain S958919Y	26.8	27.8	27.7	29.8	29.9	31.1	31.9	34.0	33.1	35.0	35.1	35.4	37.2	36.4	36.0	34.9	35.5	36.1	36.4
France S967846Y	43.2	43.4	44.4	45.1	46.1	46.0	45.4	45.9	45.3	45.0	45.1	44.9	44.9	45.5	45.5	46.0	47.3	47.7	47.7
Ireland S977012Y	32.5	33.6	35.1	36.5	37.4	36.4	37.2	37.4	37.0	34.5	34.0	34.2	34.4	34.3	35.0	32.4	32.3	32.1	31.7
Luxembourg S004654Y	43.3	43.8	44.0	47.1	45.7	46.8	44.3	44.7	42.9	41.6	40.1
Netherlands S012452Y	45.9	45.3	46.3	47.2	45.7	45.3	45.6	47.9	48.3	45.3	45.0	47.4	47.4	48.4	46.2	45.0	44.8	45.5	44.6
Austria S019855Y	43.3	44.2	43.3	42.8	44.5	45.5	45.3	44.9	44.9	43.8	43.4	43.9	45.2	46.2	45.0	45.6	46.8	47.1	46.3
Portugal S041217Y	26.8	28.5	30.2	32.1	31.4	31.2	31.2	30.2	31.1	31.5	32.1	33.3	35.8	34.7	34.6	35.2	36.0	36.5	37.3
Finland S048773Y	38.5	40.5	39.6	39.4	40.7	42.3	43.7	41.8	44.1	44.0	46.4	47.6	47.4	46.7	48.6	47.3	48.6	47.3	47.7
Sweden S073837Y	50.1	50.8	50.6	51.7	51.3	51.4	52.7	54.8	54.6	56.4	55.9	52.9	51.4	50.6	50.4	50.4	52.8	54.0	55.8
United Kingdom . S083203Y	33.6	35.4	35.8	35.6	35.7	35.4	34.9	34.2	34.6	38.7	38.5	38.3	37.2	36.0	36.4	37.4	37.2	37.7	38.9
<i>Averages, including Italy</i>																			
Euro area S090353Y	39.6	39.8	40.5	41.1	41.3	41.5	41.3	41.8	41.5	41.7	41.3	41.9	42.5	43.5	43.2	43.4	43.6	43.9	43.5
EU S104191Y	39.0	39.4	40.0	40.5	40.7	40.8	40.9	41.2	41.0	41.8	41.4	41.8	42.1	42.7	42.5	42.8	43.1	43.2	43.1
<i>Averages, excluding Italy</i>																			
Euro area S104191Y	41.4	41.5	41.9	42.4	42.8	43.0	42.7	43.2	42.6	42.5	41.8	42.4	42.9	43.4	43.6	43.7	43.9	43.9	43.6
EU S111815Y	40.1	40.5	40.9	41.3	41.6	41.8	41.8	42.1	41.7	42.4	41.9	42.1	42.3	42.5	42.7	43.0	43.2	43.1	43.2
France, Germany, United Kingdom . S120277Y	40.5	40.8	41.3	41.3	41.8	41.7	41.4	41.4	41.0	42.2	41.5	41.8	41.9	42.1	42.4	43.1	43.1	42.9	42.9
United States ... S131980Y	28.1	28.7	27.9	27.4	27.5	27.8	28.0	28.8	28.5	28.7	28.6	28.5	28.4	28.7	29.2	29.5	30.1
Japan S141334Y	25.5	26.6	26.8	27.0	27.4	28.0	27.9	29.4	29.6	29.8	30.9	30.2	29.7	28.7	27.9	28.4	28.3
Canada S148613Y	30.0	32.4	32.8	32.3	32.1	32.1	33.6	34.4	34.8	34.8	36.6	37.4	37.8	36.9	36.7	36.7	37.5

Table 10

ITUE0190

Tax revenue

(as a percentage of GDP)

	1980	1981	1982	1983	1984	1985	1986	1987	1988	1989	1990	1991	1992	1993	1994	1995	1996	1997	1998
Italy S180074Y	18.5	19.4	21.0	22.7	22.2	22.1	22.1	22.9	23.5	24.9	25.1	25.8	27.9	28.9	26.7	27.4	27.5	29.2	30.2
Belgium S189912Y	31.0	31.0	32.7	32.1	32.3	32.0	31.2	31.2	30.3	29.2	29.4	29.0	29.1	29.6	31.2	31.0	31.2	31.9	32.0
Denmark S198943Y	43.7	43.4	42.3	43.7	44.7	46.1	48.1	48.5	50.9	49.6	47.2	47.1	47.4	48.9	50.0	49.6	49.8	50.0	50.0
Germany S208857Y	26.0	25.3	25.0	25.0	25.2	25.3	24.7	24.8	24.6	25.3	23.7	23.9	24.3	24.3	24.3	24.5	23.4	22.8	22.9
Greece S245377Y
Spain S254933Y	13.8	14.7	14.7	16.4	17.3	18.2	19.2	21.4	21.0	22.5	22.3	22.3	23.3	22.1	22.1	21.8	22.3	22.7	23.0
France S265076Y	28.8	24.1	24.4	24.7	25.4	25.2	25.1	25.3	24.9	24.5	24.4	24.6	24.3	24.4	25.0	25.3	26.1	27.1	28.8
Ireland S273856Y	23.0	29.0	29.9	31.2	32.0	31.2	32.0	32.3	32.0	29.6	29.0	29.3	29.3	29.3	30.2	27.8	28.2	28.1	27.7
Luxembourg S283321Y	29.4	29.7	30.3	33.9	32.7	33.9	31.8	31.8	31.6	30.5	29.4
Netherlands S303008Y	28.0	26.9	26.9	25.7	25.3	25.1	26.2	27.7	27.9	26.6	28.2	29.6	29.0	30.1	27.4	26.2	27.0	26.9	26.7
Austria S314601Y	28.8	29.6	28.9	28.7	30.1	30.7	30.5	30.1	30.1	29.1	27.8	28.2	28.9	29.2	27.6	27.9	29.3	30.0	29.5
Portugal S323679Y	18.6	19.9	20.9	22.9	22.1	22.5	21.3	20.0	21.3	21.7	21.8	22.6	24.4	22.7	22.9	23.4	24.5	24.7	25.2
Finland S333729Y	27.6	29.4	29.0	29.1	30.2	30.9	32.3	30.4	32.6	32.5	33.6	33.8	32.6	31.5	32.6	32.2	34.2	33.8	34.5
Sweden S343110Y	41.4	40.5	37.6	36.7	36.4	36.1	35.9	37.8	39.0	40.8
United Kingdom . S353431Y	27.7	29.4	29.4	28.9	29.0	28.7	28.3	27.9	28.1	30.9	31.0	30.7	29.6	28.5	28.9	29.9	30.0	30.2	31.2
<i>Averages, including Italy</i>																			
Euro area S364274Y	23.6	23.6	23.9	24.4	24.6	24.7	24.6	25.0	24.9	25.3	24.9	25.2	25.7	25.8	25.4	25.5	25.6	26.0	26.7
EU S376552Y	24.7	25.0	25.3	25.6	25.8	25.9	25.7	26.0	26.0	27.3	26.8	26.8	27.0	26.9	26.7	26.9	27.1	27.6	28.3
<i>Averages, excluding Italy</i>																			
Euro area S384190Y	24.6	24.5	24.6	24.8	25.2	25.3	25.2	25.5	25.3	25.4	24.8	25.0	25.1	25.1	25.1	25.2	25.2	25.3	25.9
EU S393524Y	25.7	26.0	26.0	26.1	26.5	26.6	26.4	26.6	26.5	27.7	27.1	27.0	26.8	26.5	26.7	26.8	27.0	27.3	28.0
France, Germany, United Kingdom . S401370Y	25.7	26.1	26.1	26.0	26.3	26.2	25.7	25.7	25.6	26.6	25.9	25.9	25.6	25.3	25.6	25.9	25.7	26.0	26.9
United States ... S412232Y
Japan S421650Y
Canada S431178Y

Table 11

ITUE0200

Tax revenue, excluding capital taxes

(as a percentage of GDP)

	1980	1981	1982	1983	1984	1985	1986	1987	1988	1989	1990	1991	1992	1993	1994	1995	1996	1997	1998
Italy S459856Y	18.4	19.3	20.5	21.6	21.9	22.0	22.0	22.8	23.4	24.7	25.0	25.6	25.9	28.2	26.6	26.8	27.2	28.5	29.8
Belgium S469847Y	30.6	30.6	32.4	31.8	32.0	31.7	30.9	30.9	30.0	28.9	29.1	28.7	28.8	29.2	30.8	30.6	30.9	31.6	31.7
Denmark S479359Y	43.4	43.2	42.1	43.5	44.5	45.9	47.9	48.2	50.6	49.3	46.9	46.8	47.1	48.6	49.8	49.4	49.8	49.8	49.8
Germany S487735Y	25.9	25.2	24.9	24.9	25.1	25.2	24.6	24.7	24.5	25.2	23.6	23.8	24.2	24.2	24.2	24.4	23.3	22.7	22.8
Greece S494923Y	15.2	14.6	16.7	17.2	17.6	17.3	19.3	19.8	19.1	17.0	19.5	20.3	21.0	20.7	21.3	21.7	21.6	22.4	23.3
Spain S504564Y	13.6	14.5	14.5	16.2	17.1	18.0	19.0	21.1	20.8	22.3	22.1	22.1	23.1	21.9	21.9	21.6	21.9	22.5	22.8
France S514735Y	23.6	23.8	24.2	24.4	25.1	24.9	24.7	25.0	24.5	24.1	24.0	24.0	23.6	23.9	24.4	24.7	25.5	26.5	28.3
Ireland S523945Y	27.9	28.9	29.8	31.1	31.9	31.1	31.9	32.2	31.9	29.5	28.9	29.1	29.2	29.1	30.0	27.7	28.0	28.0	27.6
Luxembourg S533164Y	29.3	29.6	30.2	33.8	32.6	33.8	31.7	31.7	31.5	30.4	29.3
Netherlands S560999Y	27.8	26.7	26.7	25.5	25.1	24.9	26.0	27.4	27.7	26.4	28.0	29.4	28.8	29.8	27.1	25.9	26.7	26.6	26.4
Austria S571383Y	28.7	29.5	28.8	28.6	30.0	30.6	30.4	30.0	30.0	29.0	27.7	28.1	28.8	29.1	27.5	27.9	29.2	29.9	29.4
Portugal S584778Y	18.5	19.8	20.8	22.7	21.9	22.3	21.0	19.8	21.1	21.6	21.6	22.4	24.3	22.6	22.8	23.3	24.4	24.6	25.1
Finland S592999Y	27.5	29.3	28.9	29.0	30.1	30.8	32.2	30.3	32.5	32.4	33.4	33.6	32.4	31.3	32.4	32.0	34.0	33.6	34.3
Sweden S602791Y	34.9	35.2	35.5	36.9	37.0	37.4	38.5	41.1	40.6	41.3	40.4	37.5	36.6	36.3	36.0	35.8	37.7	38.9	40.7
United Kingdom . S618773Y	27.5	29.1	29.2	28.7	28.8	28.5	28.1	27.6	27.9	30.7	30.8	30.5	29.4	28.3	28.7	29.7	29.6	30.0	31.0
<i>Averages, including Italy</i>																			
Euro area S626584Y	23.4	23.4	23.7	24.0	24.4	24.5	24.4	24.8	24.7	25.1	24.7	24.9	25.0	25.4	25.2	25.2	25.3	25.7	26.4
EU S634921Y	24.8	25.1	25.3	25.5	25.9	26.0	25.9	26.2	26.2	26.9	26.5	26.5	26.4	26.5	26.4	26.5	26.7	27.2	28.0
<i>Averages, excluding Italy</i>																			
Euro area S644288Y	24.5	24.3	24.4	24.6	25.0	25.1	25.0	25.3	25.1	25.2	24.6	24.7	24.8	24.8	24.9	24.9	24.9	25.1	25.6
EU S653130Y	25.8	26.0	26.1	26.2	26.6	26.7	26.6	26.9	26.8	27.4	26.8	26.7	26.5	26.2	26.3	26.5	26.6	27.0	27.7
France, Germany, United Kingdom . S660932Y	25.6	25.8	25.9	25.8	26.1	26.1	25.5	25.5	25.4	26.4	25.7	25.6	25.3	25.0	25.3	25.6	25.4	25.8	26.7
United States ... S668595Y	21.9	22.2	21.3	20.8	20.7	20.8	20.9	21.7	21.1	21.4	21.2	21.0	20.9	21.2	21.6	21.9	22.6
Japan S676089Y	18.2	18.8	18.8	18.9	19.3	19.8	19.6	20.9	21.2	21.5	21.8	21.2	20.5	19.3	18.4	18.1	18.1
Canada S684436Y	26.5	28.5	28.7	27.9	27.8	27.7	29.0	29.7	30.0	30.3	31.6	32.1	32.0	31.2	31.0	31.1	32.0

Table 12

ITUE0210

Direct taxes

(as a percentage of GDP)

	1980	1981	1982	1983	1984	1985	1986	1987	1988	1989	1990	1991	1992	1993	1994	1995	1996	1997	1998
Italy S711715Y	9.7	11.0	11.9	12.4	12.6	13.0	12.9	13.3	13.4	14.3	14.4	14.5	14.7	16.2	14.9	14.7	15.3	16.1	14.4
Belgium S736751Y	18.2	18.2	19.7	19.0	19.6	19.5	19.0	18.6	17.9	16.7	16.8	16.5	16.5	16.6	17.9	18.2	18.1	18.6	18.7
Denmark S760151Y	25.2	25.2	24.9	26.1	26.9	27.9	28.7	29.2	31.4	31.0	29.3	29.5	30.0	31.2	31.9	31.6	31.6	31.3	30.6
Germany S769346Y	12.8	12.3	12.2	12.0	12.2	12.6	12.3	12.4	12.2	12.7	11.2	11.4	11.7	11.4	11.0	11.4	10.5	10.0	10.2
Greece S779790Y	4.6	3.9	4.9	4.5	4.9	4.6	5.0	5.0	5.4	4.6	5.5	5.6	5.5	5.8	6.9	7.3	7.1	7.5	8.3
Spain S789592Y	7.0	7.2	6.8	7.8	8.2	8.5	8.2	10.3	10.2	11.7	11.7	11.7	12.1	11.6	11.1	11.1	11.3	11.6	11.3
France S820362Y	8.4	8.6	8.8	8.9	9.3	9.1	9.2	9.3	8.9	9.0	8.9	9.3	9.0	9.2	9.4	9.5	9.9	10.7	12.7
Ireland S851277Y	11.9	12.3	12.6	13.1	13.9	13.6	14.4	14.9	15.2	12.8	13.2	13.8	14.0	14.8	14.9	13.3	13.7	13.8	13.6
Luxembourg S881982Y	16.4	16.4	16.5	18.2	17.3	18.3	16.7	16.6	14.6	14.0	13.2
Netherlands S909834Y	15.7	15.1	14.9	13.7	12.9	12.7	13.4	14.1	14.5	14.0	15.6	16.9	16.0	16.8	14.1	13.1	13.4	13.1	12.7
Austria S939290Y	12.6	13.3	12.9	12.7	13.4	14.1	14.2	13.6	13.7	12.8	11.8	12.4	12.9	13.0	11.5	12.2	13.2	13.5	13.7
Portugal S948765Y	5.8	6.8	7.1	8.1	7.9	8.1	6.1	5.5	6.8	8.1	8.2	9.1	10.2	9.2	9.0	9.3	10.0	10.4	10.3
Finland S981463Y	14.3	15.8	15.4	15.6	16.0	16.6	17.6	15.7	17.1	16.9	17.8	18.0	17.1	16.2	17.6	17.9	19.3	18.8	19.4
Sweden S023032Y	21.5	21.0	21.4	21.7	21.2	21.0	21.7	23.8	24.2	25.1	23.3	19.8	20.4	20.7	21.1	21.5	22.0	22.6	24.1
United Kingdom . S053810Y	13.5	14.3	14.6	14.4	14.4	14.6	13.7	13.3	13.5	16.9	17.1	16.1	15.2	14.2	14.5	15.3	15.1	15.4	16.8
<i>Averages, including Italy</i>																			
Euro area S063713Y	11.0	11.2	11.3	11.5	11.7	11.9	11.8	12.1	12.0	12.3	12.0	12.3	12.3	12.4	11.9	12.0	12.0	12.3	12.4
EU S074152Y	12.0	12.2	12.4	12.5	12.7	12.9	12.7	13.0	12.9	13.8	13.4	13.3	13.2	13.1	12.8	13.0	13.1	13.4	13.8
<i>Averages, excluding Italy</i>																			
Euro area S080027Y	11.3	11.2	11.2	11.2	11.5	11.6	11.5	11.8	11.6	11.8	11.4	11.7	11.7	11.6	11.3	11.5	11.3	11.4	12.0
EU S089327Y	12.4	12.4	12.5	12.5	12.7	12.9	12.7	12.9	12.9	13.7	13.2	13.1	12.9	12.6	12.5	12.8	12.7	12.9	13.7
France, Germany, United Kingdom . S098761Y	11.5	11.6	11.8	11.7	11.9	12.0	11.6	11.6	11.5	12.6	12.0	12.0	11.7	11.4	11.3	11.7	11.4	11.7	12.7
United States ... S126879Y	14.1	14.0	13.2	12.6	12.5	12.7	12.8	13.6	13.2	13.5	13.2	12.6	12.5	12.8	13.1	13.6	14.4
Japan S135380Y	10.8	11.3	11.3	11.6	11.7	12.0	12.1	12.8	12.9	13.5	13.6	13.6	12.6	11.5	10.5	10.0	9.9
Canada S142300Y	14.5	14.8	15.0	14.6	14.6	14.6	15.4	15.9	16.1	16.0	17.2	16.9	16.5	15.9	16.0	16.5	17.4

Table 13

ITUE0220

Indirect taxes

(as a percentage of GDP)

	1980	1981	1982	1983	1984	1985	1986	1987	1988	1989	1990	1991	1992	1993	1994	1995	1996	1997	1998
Italy S169729Y	8.7	8.3	8.6	9.2	9.3	9.0	9.1	9.5	10.0	10.4	10.6	11.1	11.2	12.0	11.7	12.1	11.9	12.4	15.4
Belgium S179769Y	12.4	12.5	12.7	12.8	12.5	12.2	11.9	12.3	12.1	12.2	12.3	12.2	12.3	12.6	12.9	12.4	12.8	13.0	13.0
Denmark S192646Y	18.2	18.0	17.3	17.5	17.7	18.0	19.2	19.0	19.3	18.3	17.6	17.3	17.1	17.4	18.0	17.9	18.1	18.5	19.2
Germany S200086Y	13.1	12.9	12.7	12.9	12.9	12.6	12.3	12.3	12.3	12.5	12.5	12.4	12.5	12.8	13.2	13.0	12.8	12.7	12.6
Greece S207219Y	10.6	10.7	11.9	12.7	12.6	12.7	14.3	14.8	13.7	12.4	14.0	14.8	15.5	14.9	14.5	14.3	14.6	14.9	15.0
Spain S214200Y	6.7	7.3	7.7	8.4	8.9	9.5	10.8	10.8	10.6	10.6	10.4	10.4	11.0	10.3	10.7	10.5	10.6	10.9	11.6
France S221530Y	15.3	15.2	15.4	15.5	15.8	15.8	15.5	15.7	15.6	15.2	15.1	14.7	14.6	14.7	15.0	15.1	15.6	15.8	15.6
Ireland S231440Y	16.0	16.6	17.2	18.0	18.0	17.4	17.5	17.3	16.7	16.7	15.7	15.3	15.1	14.3	15.0	14.4	14.3	14.2	14.1
Luxembourg S242947Y	13.0	13.1	13.8	15.6	15.3	15.5	15.0	15.1	15.2	15.2	15.4	15.5	15.9	16.6	16.6	16.6	16.8	16.4	16.1
Netherlands S272210Y	12.1	11.6	11.7	11.8	12.2	12.1	12.6	13.3	13.3	12.5	12.4	12.4	12.8	13.0	13.0	12.9	13.3	13.5	13.7
Austria S282840Y	16.0	16.1	15.9	15.9	16.6	16.5	16.3	16.4	16.3	16.2	15.9	15.7	15.9	16.0	16.0	15.8	16.0	16.4	15.7
Portugal S289762Y	12.7	13.0	13.6	14.6	14.0	14.2	14.9	14.2	14.4	13.5	13.5	13.3	14.2	13.4	13.8	14.0	14.4	14.3	14.8
Finland S296826Y	13.2	13.5	13.4	13.4	14.1	14.2	14.6	14.7	15.4	15.5	15.6	15.6	15.4	15.1	14.8	14.2	14.7	14.8	14.9
Sweden S306539Y	13.5	14.2	14.0	15.2	15.8	16.5	16.8	17.3	16.4	16.1	17.1	17.7	16.2	15.6	14.9	14.3	15.7	16.3	16.6
United Kingdom . S315642Y	14.0	14.8	14.6	14.4	14.3	14.0	14.4	14.3	14.4	13.9	13.7	14.5	14.2	14.1	14.2	14.5	14.5	14.7	14.2
<i>Averages, including Italy</i>																			
Euro area S324301Y	12.4	12.3	12.3	12.6	12.7	12.6	12.6	12.7	12.8	12.8	12.7	12.6	12.8	13.0	13.3	13.2	13.3	13.4	14.0
EU S330958Y	12.8	12.9	12.9	13.1	13.2	13.1	13.2	13.3	13.3	13.2	13.1	13.2	13.2	13.4	13.6	13.5	13.6	13.8	14.2
<i>Averages, excluding Italy</i>																			
Euro area S338698Y	13.2	13.1	13.2	13.4	13.6	13.5	13.5	13.6	13.5	13.4	13.3	13.0	13.1	13.3	13.6	13.5	13.6	13.7	13.7
EU S346146Y	13.4	13.6	13.6	13.7	13.9	13.8	13.9	14.0	13.9	13.7	13.6	13.6	13.6	13.6	13.8	13.8	13.9	14.1	14.0
France, Germany, United Kingdom . S353581Y	14.1	14.2	14.2	14.1	14.2	14.1	13.9	13.9	13.9	13.8	13.7	13.6	13.5	13.7	14.0	14.0	14.0	14.1	13.9
United States ... S362578Y	7.8	8.2	8.1	8.2	8.2	8.1	8.1	8.1	7.9	7.9	8.0	8.4	8.4	8.4	8.5	8.3	8.2
Japan S371531Y	7.4	7.5	7.5	7.3	7.6	7.8	7.5	8.1	8.3	8.0	8.2	7.6	7.9	7.8	7.9	8.1	8.2
Canada S378898Y	12.0	13.7	13.7	13.3	13.2	13.1	13.6	13.8	13.9	14.3	14.4	15.2	15.5	15.3	15.0	14.6	14.6

Table 14

ITUE0230

Social security contributions

(as a percentage of GDP)

	1980	1981	1982	1983	1984	1985	1986	1987	1988	1989	1990	1991	1992	1993	1994	1995	1996	1997	1998
Italy S387623Y	12.8	12.9	13.8	14.1	13.6	13.6	14.0	13.8	13.7	14.1	14.4	14.7	15.1	15.5	14.9	14.8	15.1	15.4	13.0
Belgium S420677Y	15.1	15.6	15.7	16.3	16.9	17.4	17.5	17.7	17.2	16.9	17.0	17.7	18.0	18.5	18.0	17.7	17.5	17.4	17.1
Denmark S476737Y	1.8	2.0	2.3	2.8	2.8	2.8	2.5	2.9	2.2	2.2	2.4	2.4	2.5	2.6	2.9	2.7	2.7	2.7	2.7
Germany S484720Y	16.9	17.5	17.9	17.4	17.4	17.6	17.5	17.6	17.5	17.2	16.9	17.7	18.1	18.7	19.2	19.5	20.1	20.2	19.6
Greece S517097Y	9.5	9.7	10.7	11.3	11.5	11.7	11.4	11.6	10.9	11.4	11.7	11.2	11.1	12.1	12.3	12.6	12.7	12.6	12.8
Spain S524315Y	13.1	13.3	13.2	13.6	12.9	13.2	12.9	12.9	12.4	12.7	13.0	13.3	14.2	14.5	14.2	13.3	13.6	13.6	13.6
France S552928Y	19.6	19.6	20.2	20.7	21.1	21.1	20.7	21.0	20.8	20.9	21.0	21.0	21.3	21.6	21.1	21.3	21.8	21.3	19.4
Ireland S578734Y	4.6	4.7	5.3	5.4	5.4	5.4	5.3	5.2	5.1	5.0	5.0	5.2	5.3	5.3	5.1	4.7	4.3	4.1	4.0
Luxembourg S599182Y	14.0	14.2	13.8	13.2	13.1	12.9	12.6	13.0	11.4	11.1	10.9
Netherlands S632811Y	18.1	18.6	19.6	21.7	20.7	20.5	19.6	20.5	20.6	18.9	17.1	18.0	18.6	18.6	19.1	19.0	18.1	18.9	18.2
Austria S695067Y	14.6	14.7	14.5	14.3	14.5	14.8	14.8	14.9	14.9	14.8	15.7	15.8	16.5	17.1	17.5	17.6	17.6	17.3	16.9
Portugal S720228Y	8.3	8.7	9.4	9.4	9.4	9.0	10.2	10.4	10.0	9.9	10.4	10.9	11.5	12.1	11.8	12.0	11.6	11.9	12.1
Finland S745594Y	11.0	11.2	10.7	10.3	10.6	11.5	11.5	11.5	11.6	11.6	13.1	14.0	15.0	15.5	16.2	15.3	14.6	13.7	13.4
Sweden S777937Y	15.2	15.7	15.1	14.8	14.3	14.0	14.2	13.8	14.0	15.1	15.5	15.4	14.7	14.3	14.4	14.7	15.1	15.2	15.1
United Kingdom . S816433Y	6.1	6.3	6.6	6.9	6.9	6.8	6.9	6.6	6.7	7.9	7.7	7.8	7.8	7.8	7.8	7.7	7.6	7.7	7.8
<i>Averages, including Italy</i>																			
Euro area S825182Y	16.2	16.4	16.9	17.1	16.9	17.0	16.9	17.0	16.8	16.6	16.6	17.0	17.5	18.1	18.1	18.1	18.3	18.2	17.1
EU S832249Y	14.2	14.3	14.7	14.9	14.8	14.9	15.0	15.0	14.7	14.9	14.9	15.3	15.7	16.2	16.2	16.3	16.4	16.1	15.2
<i>Averages, excluding Italy</i>																			
Euro area S842712Y	16.9	17.2	17.6	17.8	17.7	17.9	17.7	17.8	17.6	17.3	17.2	17.7	18.1	18.6	18.7	18.8	19.0	18.8	18.0
EU S851229Y	14.4	14.5	14.8	15.1	15.0	15.1	15.2	15.2	14.9	15.0	15.0	15.4	15.8	16.3	16.4	16.5	16.6	16.2	15.5
France, Germany, United Kingdom . S861383Y	14.9	15.0	15.4	15.5	15.7	15.7	15.9	15.9	15.6	15.8	15.8	16.2	16.6	17.1	17.1	17.5	17.7	17.1	16.3
United States ... S898573Y	6.2	6.5	6.6	6.6	6.8	7.0	7.1	7.1	7.4	7.3	7.4	7.5	7.5	7.5	7.6	7.6	7.5
Japan S906164Y	7.3	7.8	8.0	8.1	8.1	8.2	8.3	8.5	8.4	8.3	9.1	9.0	9.2	9.4	9.5	10.3	10.2
Canada S917789Y	3.5	3.9	4.1	4.4	4.3	4.4	4.6	4.7	4.8	4.5	5.0	5.3	5.8	5.7	5.7	5.6	5.5

Table 15

ITUE0240

Total expenditure

(as a percentage of GDP)

	1980	1981	1982	1983	1984	1985	1986	1987	1988	1989	1990	1991	1992	1993	1994	1995	1996	1997	1998
Italy S949950Y	42.2	46.4	48.5	49.9	50.1	51.2	51.1	50.7	50.8	51.8	53.9	53.9	56.0	57.8	54.9	53.2	53.0	51.0	49.2
Belgium S961643Y	57.4	62.3	62.4	62.6	61.3	60.7	60.1	58.4	56.0	54.2	53.6	54.9	56.0	57.3	55.9	54.3	53.7	52.8	51.9
Denmark S969103Y	54.3	57.9	59.2	59.7	58.2	57.4	53.5	54.9	59.1	59.2	58.7	59.8	60.6	63.2	63.6	62.9	60.3	59.4	58.7
Germany S977328Y	48.5	49.5	49.7	48.4	47.9	47.5	46.8	47.2	46.7	45.3	45.6	47.7	48.6	49.8	49.4	50.6	49.8	48.5	47.7
Greece S985161Y
Spain S994524Y	33.1	35.7	37.4	38.5	38.9	42.2	42.3	42.1	40.7	42.6	43.6	44.7	46.1	49.1	47.5	47.0	45.0	43.6	43.1
France S005513Y	46.9	49.6	51.4	52.4	52.9	53.1	52.7	52.2	51.5	50.4	51.2	51.9	53.9	56.2	55.9	55.5	55.9	55.3	55.1
Ireland S013297Y	49.3	51.1	53.1	52.8	51.4	52.1	51.9	50.1	45.3	39.4	40.0	40.9	41.0	40.9	40.0	38.1	35.8	34.2	32.5
Luxembourg S020306Y	50.6	53.9	51.7	51.0	48.0	46.4	45.1	47.8
Netherlands S029412Y	57.1	58.9	61.1	61.2	60.1	58.3	58.2	59.8	58.1	55.3	55.5	56.1	56.6	56.8	54.7	53.2	51.1	50.3	48.8
Austria S041091Y	47.9	49.2	49.8	49.7	50.0	51.0	51.9	52.3	51.1	49.7	50.4	51.5	52.2	55.2	54.6	55.3	54.8	52.0	51.2
Portugal S048889Y	43.9	41.8	42.8	48.3	51.3	40.6	39.6	38.6	38.1	41.7	44.4	44.6	46.0	45.1	45.8	45.3	45.3	45.7
Finland S056165Y	39.1	40.1	41.6	43.3	43.0	44.8	45.5	46.0	45.5	43.5	47.4	56.2	61.6	63.1	62.2	59.8	59.8	56.1	53.5
Sweden S064999Y	59.9	60.6	62.7	68.6	72.5	69.7	66.1	65.9	63.7	62.9
United Kingdom . S072440Y	43.6	45.0	45.3	45.3	45.7	44.7	43.2	41.5	39.3	41.6	43.7	44.6	46.8	47.0	46.2	46.0	44.6	42.2	40.4
<i>Averages, including Italy</i>																			
Euro area S082144Y	46.5	48.7	49.9	50.2	50.1	50.5	50.1	50.0	49.2	48.4	49.4	50.5	51.9	53.5	52.4	52.2	51.7	50.3	49.4
EU S089311Y	46.2	48.2	49.2	49.6	49.5	49.7	49.1	48.8	47.8	48.0	49.1	50.2	51.9	53.3	52.3	52.0	51.3	49.6	48.5
<i>Averages, excluding Italy</i>																			
Euro area S099009Y	47.4	49.2	50.2	50.3	50.1	50.3	49.8	49.8	48.7	47.6	48.2	49.6	50.8	52.6	51.9	52.0	51.4	50.2	49.4
EU S108163Y	46.8	48.6	49.4	49.5	49.4	49.4	48.7	48.4	47.1	47.3	48.2	49.5	51.1	52.5	51.8	51.8	51.0	49.3	48.3
France, Germany, United Kingdom . S116868Y	46.6	48.2	49.0	48.8	48.9	48.5	47.8	47.4	46.2	46.0	46.9	48.2	49.8	51.1	50.6	51.0	50.5	48.8	47.8
United States ... S127237Y
Japan S136275Y
Canada S145012Y

Table 16

ITUE0250

Total expenditure, excluding interest payments

(as a percentage of GDP)

	1980	1981	1982	1983	1984	1985	1986	1987	1988	1989	1990	1991	1992	1993	1994	1995	1996	1997	1998
Italy S155116Y	37.1	40.3	41.5	42.5	42.1	43.4	42.8	42.9	42.9	43.0	44.4	43.7	44.5	45.7	43.9	41.7	41.5	41.5	41.2
Belgium S189103Y	51.4	54.5	53.2	53.3	51.5	50.2	49.0	47.9	46.0	43.9	43.1	44.7	45.2	46.4	45.7	45.3	45.1	44.8	44.4
Denmark S197304Y	50.5	52.7	53.3	51.8	48.8	47.8	44.8	46.8	51.2	51.7	51.1	52.3	53.7	55.7	56.6	56.3	54.3	53.7	53.3
Germany S206862Y	46.5	47.1	46.9	45.4	44.9	44.4	43.8	44.3	43.8	42.6	43.0	45.1	45.3	46.5	46.1	46.8	46.1	44.8	44.1
Greece S217083Y
Spain S228411Y	32.4	34.9	36.5	37.2	36.9	40.2	38.4	37.7	37.4	38.7	39.6	40.9	41.8	44.0	42.7	41.6	40.0	39.2	39.1
France S238999Y	45.4	47.6	49.3	49.9	50.3	50.3	49.8	49.4	48.8	47.7	48.3	49.0	50.7	52.8	52.4	51.7	52.1	51.7	51.6
Ireland S246301Y	43.1	44.0	44.5	44.0	42.5	42.4	42.7	40.9	37.0	31.9	32.5	33.7	34.3	34.6	34.5	33.2	31.5	30.3	29.4
Luxembourg S253242Y	49.3	52.6	50.2	49.5	46.5	45.3	44.1	46.8
Netherlands S282863Y	53.2	54.3	55.9	55.4	53.9	51.9	51.8	53.4	51.7	49.3	49.5	49.9	50.3	50.6	48.8	47.3	45.6	45.1	44.1
Austria S315296Y	45.4	46.5	46.7	46.7	46.7	47.5	48.3	48.4	47.1	45.7	46.4	47.3	47.9	50.8	50.5	50.9	50.4	48.0	47.2
Portugal S324252Y	39.2	36.6	36.7	41.4	43.6	32.8	31.9	31.7	31.9	33.6	36.5	37.4	39.8	38.9	39.5	40.5	41.0	42.2
Finland S333195Y	38.1	39.0	40.3	41.7	41.3	43.0	43.8	44.3	43.8	42.0	45.9	54.2	58.9	58.5	57.1	54.6	54.1	50.8	48.1
Sweden S355974Y	54.6	55.6	57.6	63.2	66.3	62.9	59.7	58.7	57.4	55.9
United Kingdom . S393713Y	38.8	40.0	40.2	40.6	40.9	39.7	38.7	37.2	35.3	37.4	39.9	41.3	43.7	43.8	42.8	42.5	40.9	38.7	37.2
<i>Averages, including Italy</i>																			
Euro area S401358Y	43.9	45.5	46.2	46.1	45.7	46.1	45.3	45.4	44.7	43.8	44.5	45.5	46.3	47.9	47.1	46.7	46.1	45.2	44.7
EU S408952Y	43.2	44.7	45.3	45.3	45.0	45.0	44.3	44.2	43.3	43.3	44.3	45.5	46.7	48.0	47.1	46.7	45.9	44.7	44.0
<i>Averages, excluding Italy</i>																			
Euro area S417688Y	45.3	46.6	47.2	47.0	46.7	46.7	46.0	46.0	45.2	44.0	44.5	46.0	46.8	48.4	47.7	47.6	47.1	46.1	45.5
EU S424705Y	44.2	45.4	45.9	45.8	45.5	45.3	44.6	44.4	43.4	43.4	44.3	45.8	47.1	48.4	47.6	47.4	46.7	45.2	44.4
France, Germany, United Kingdom . S434375Y	44.1	45.2	45.8	45.5	45.5	45.0	44.5	44.2	43.1	42.8	43.9	45.3	46.6	47.8	47.2	47.3	46.8	45.1	44.3
United States ... S445172Y
Japan S452824Y
Canada S462029Y

Table 17

ITUE0260

Current expenditure

(as a percentage of GDP)

	1980	1981	1982	1983	1984	1985	1986	1987	1988	1989	1990	1991	1992	1993	1994	1995	1996	1997	1998
Italy S485052Y	37.8	41.6	43.4	44.9	45.1	45.1	45.7	45.3	45.6	46.7	48.2	49.2	51.4	52.9	50.7	48.5	49.2	47.4	45.6
Belgium S494611Y	52.0	56.7	57.5	58.2	57.5	57.2	56.9	55.5	53.1	52.0	51.5	52.8	53.7	54.8	53.3	52.0	51.6	50.5	49.3
Denmark S507553Y	49.7	53.2	55.1	55.9	54.9	54.0	50.9	52.3	56.9	57.2	56.8	57.6	58.3	60.9	61.2	59.7	58.3	57.0	56.3
Germany S536279Y	42.7	44.2	44.9	44.0	43.6	43.4	42.8	43.3	42.9	41.6	42.0	42.9	44.0	45.3	45.5	46.6	46.4	45.4	44.4
Greece S546462Y	26.6	31.9	32.7	33.8	35.0	38.2	37.9	38.9	39.2	40.3	42.5	40.3	41.7	43.9	44.6	45.7	43.8	41.3	40.9
Spain S555443Y	29.7	31.5	32.2	33.5	34.0	35.2	36.3	36.9	35.0	36.1	37.1	38.3	40.6	43.2	41.8	40.9	40.3	39.1	38.2
France S563490Y	42.8	45.6	47.2	48.5	49.2	49.4	48.8	48.4	47.3	46.3	46.6	47.6	49.4	52.0	51.4	51.3	52.1	52.0	51.2
Ireland S574970Y	41.1	43.2	46.1	46.7	46.2	46.9	47.0	46.0	42.5	36.8	37.0	38.0	38.1	37.7	36.5	34.3	32.5	30.8	29.1
Luxembourg S583947Y	42.5	45.5	44.2	43.4	41.7	41.1	40.3	42.6	39.0	38.0	37.6
Netherlands S592971Y	51.1	52.9	55.3	56.1	54.8	53.5	53.1	54.5	53.6	51.2	51.7	52.5	53.3	53.5	51.5	49.9	48.4	47.5	45.9
Austria S603357Y	41.8	43.0	44.1	43.8	44.3	45.3	46.1	46.9	45.9	44.9	45.6	46.6	47.3	50.0	49.5	50.5	50.1	48.3	47.2
Portugal S612843Y	32.5	37.9	35.6	37.4	41.2	40.2	35.8	35.4	34.2	33.3	36.5	39.0	38.6	40.0	40.1	40.5	40.1	39.9	39.9
Finland S621248Y	34.9	36.1	37.3	38.9	39.1	40.8	41.7	41.9	40.6	40.0	43.0	51.5	57.2	59.5	58.3	56.3	55.8	52.8	50.3
Sweden S646030Y	56.8	59.3	61.2	61.1	59.7	61.1	59.7	58.2	57.0	57.0	58.1	59.9	64.0	67.2	66.1	62.8	63.6	61.0	61.2
United Kingdom . S657081Y	40.4	42.5	43.0	42.5	42.8	42.1	41.0	39.6	37.8	38.6	38.9	40.7	43.3	43.6	43.0	42.7	42.0	40.1	38.3
<i>Averages, including Italy</i>																			
Euro area S664862Y	41.5	43.9	45.0	45.7	45.7	45.7	45.6	45.6	44.7	44.1	44.8	45.8	47.4	49.0	48.2	48.0	48.0	46.9	45.7
EU S672050Y	41.9	44.2	45.3	45.7	45.7	45.7	45.4	45.2	44.3	43.9	44.6	45.7	47.5	48.9	48.2	47.9	47.8	46.3	45.1
<i>Averages, excluding Italy</i>																			
Euro area S681166Y	42.3	44.3	45.4	45.9	45.8	45.9	45.5	45.6	44.5	43.4	43.9	44.9	46.4	48.2	47.7	47.9	47.7	46.8	45.8
EU S691879Y	42.5	44.6	45.6	45.8	45.8	45.9	45.4	45.2	44.0	43.4	43.9	45.0	46.7	48.3	47.8	47.8	47.5	46.2	45.0
France, Germany, United Kingdom . S704190Y	42.1	44.2	45.1	45.0	45.2	45.0	44.4	44.0	42.9	42.3	42.7	43.8	45.5	46.9	46.7	47.2	47.1	45.9	44.7
United States ... S713528Y	30.8	31.3	33.7	34.0	32.8	33.5	33.9	33.8	33.0	32.7	33.7	35.0	35.0	34.3	33.3	33.3	32.9
Japan S721240Y	24.4	25.3	25.9	26.7	26.3	25.9	26.2	26.2	25.4	24.7	25.3	24.5	25.0	25.8	26.5	27.8	27.7
Canada S730575Y	36.6	37.3	41.5	42.1	41.9	42.3	42.3	41.3	40.7	41.2	43.8	47.3	48.6	47.6	45.3	44.3	42.6

Table 18

ITUE0270

Current expenditure, excluding interest payments

(as a percentage of GDP)

	1980	1981	1982	1983	1984	1985	1986	1987	1988	1989	1990	1991	1992	1993	1994	1995	1996	1997	1998
Italy S740150Y	32.7	35.5	36.4	37.5	37.1	37.3	37.4	37.5	37.7	37.9	38.7	39.0	39.9	40.8	39.7	37.0	37.7	37.9	37.6
Belgium S749384Y	46.1	49.0	48.4	48.9	47.7	46.7	45.9	45.0	43.1	41.7	41.0	42.7	42.9	43.9	43.1	43.0	43.0	42.6	41.8
Denmark S757834Y	45.8	48.1	49.2	48.1	45.6	44.3	42.3	44.2	49.1	49.8	49.3	50.1	51.4	53.4	54.3	53.1	52.3	51.2	50.9
Germany S765410Y	40.8	41.9	42.1	41.0	40.6	40.4	39.8	40.4	40.1	38.9	39.3	40.3	40.8	42.1	42.1	42.8	42.7	41.7	40.8
Greece S773457Y	24.6	29.2	29.9	30.2	30.7	33.2	32.6	32.3	31.7	32.7	32.3	30.9	30.0	31.1	30.5	32.8	31.8	31.7	31.8
Spain S780725Y	29.0	30.7	31.2	32.2	32.0	33.2	32.5	32.5	31.7	32.2	33.1	34.5	36.3	38.1	37.1	35.5	35.4	34.7	34.2
France S789598Y	41.3	43.6	45.2	46.0	46.5	46.5	45.9	45.6	44.6	43.6	43.7	44.6	46.2	48.6	47.8	47.6	48.3	48.3	47.7
Ireland S796666Y	34.8	36.2	37.5	37.9	37.3	37.1	37.8	36.9	34.2	29.3	29.5	30.7	31.4	31.5	31.0	29.4	28.3	26.9	26.0
Luxembourg S803040Y	41.2	44.2	42.7	41.9	40.2	40.1	39.4	41.5	38.7	37.7	37.2
Netherlands S810493Y	47.2	48.3	50.1	50.4	48.6	47.1	46.7	48.1	47.2	45.2	45.7	46.3	47.0	47.3	45.6	44.0	42.8	42.2	41.1
Austria S817549Y	39.4	40.2	41.1	40.9	41.0	41.8	42.5	43.0	42.0	40.9	41.6	42.3	43.1	45.7	45.4	46.1	45.7	44.3	43.2
Portugal S824990Y	29.8	33.2	30.4	31.3	34.2	32.4	28.0	27.7	27.2	27.0	28.4	31.2	31.4	33.8	33.9	34.1	35.3	35.6	36.4
Finland S836867Y	33.9	35.0	36.0	37.4	37.4	39.0	40.0	40.2	39.0	38.5	41.6	49.5	54.6	54.9	53.2	51.1	50.2	47.6	45.0
Sweden S844154Y	52.8	54.0	54.4	54.0	52.1	52.8	52.4	51.8	51.4	51.7	53.1	54.8	58.6	61.0	59.3	56.4	56.4	54.8	54.2
United Kingdom . S852971Y	35.7	37.5	37.9	37.8	37.9	37.1	36.5	35.2	33.8	34.5	35.1	37.4	40.1	40.4	39.6	39.2	38.3	36.5	35.1
<i>Averages, including Italy</i>																			
Euro area S865309Y	38.9	40.6	41.4	41.6	41.3	41.3	40.8	41.0	40.3	39.4	39.9	40.8	41.8	43.4	42.9	42.4	42.4	41.8	41.1
EU S872723Y	38.8	40.6	41.2	41.3	41.1	40.9	40.5	40.5	39.7	39.2	39.7	40.9	42.2	43.5	42.9	42.5	42.3	41.4	40.5
<i>Averages, excluding Italy</i>																			
Euro area S882348Y	40.2	41.8	42.5	42.6	42.3	42.2	41.7	41.9	40.9	39.8	40.2	41.3	42.3	44.0	43.5	43.5	43.4	42.7	41.9
EU S889750Y	39.8	41.4	42.0	42.0	41.8	41.6	41.1	41.0	40.1	39.4	40.0	41.2	42.6	43.9	43.4	43.3	43.1	41.9	41.0
France, Germany, United Kingdom . S898983Y	39.6	41.2	41.9	41.7	41.8	41.4	41.0	40.8	39.8	39.2	39.6	40.9	42.3	43.7	43.2	43.5	43.4	42.2	41.2
United States ... S906605Y	27.6	27.6	29.5	29.6	28.1	28.6	28.9	28.9	28.1	27.8	28.7	29.9	30.1	29.7	28.9	28.7	28.4
Japan S915125Y	21.3	21.8	22.1	22.5	21.9	21.5	21.8	21.8	21.2	20.7	21.4	20.8	21.3	22.1	22.8	24.0	24.0
Canada S922370Y	31.1	31.0	34.2	34.7	34.0	33.8	33.7	32.9	32.3	32.2	34.2	37.7	39.1	38.3	36.1	34.5	33.2

Table 19

ITUE0280

Interest payments

(as a percentage of GDP)

	1980	1981	1982	1983	1984	1985	1986	1987	1988	1989	1990	1991	1992	1993	1994	1995	1996	1997	1998
Italy S931478Y	5.1	6.1	7.0	7.4	8.0	7.8	8.3	7.8	7.9	8.8	9.5	10.2	11.5	12.1	11.0	11.5	11.5	9.5	8.0
Belgium S940804Y	6.0	7.8	9.1	9.3	9.7	10.5	11.0	10.5	10.0	10.3	10.5	10.1	10.8	10.9	10.2	9.0	8.6	7.9	7.5
Denmark S948241Y	3.9	5.2	5.9	7.9	9.4	9.7	8.6	8.1	7.8	7.5	7.5	7.5	6.9	7.5	6.9	6.6	6.0	5.7	5.4
Germany S955623Y	1.9	2.3	2.8	3.0	3.0	3.0	3.0	2.9	2.9	2.7	2.6	2.7	3.2	3.3	3.3	3.8	3.7	3.7	3.6
Greece S964518Y	2.0	2.7	2.8	3.6	4.4	4.9	5.3	6.6	7.5	7.6	10.2	9.4	11.7	12.8	14.1	12.9	12.0	9.6	9.1
Spain S974166Y	0.7	0.8	1.0	1.3	2.0	2.0	3.9	4.4	3.3	4.0	3.9	3.8	4.3	5.1	4.7	5.4	4.9	4.4	3.9
France S981056Y	1.5	2.0	2.0	2.6	2.7	2.9	2.9	2.8	2.7	2.7	2.9	3.0	3.3	3.4	3.6	3.7	3.8	3.6	3.5
Ireland S989485Y	6.2	7.0	8.6	8.8	8.9	9.7	9.2	9.1	8.3	7.5	7.5	7.3	6.7	6.3	5.5	4.9	4.3	3.9	3.1
Luxembourg S999024Y	1.2	1.3	1.5	1.5	1.6	1.0	0.9	1.0	0.5	0.4	0.3	0.4	0.3	0.3	0.3	0.3	0.4
Netherlands S007769Y	3.9	4.6	5.3	5.8	6.2	6.4	6.4	6.4	6.4	6.0	6.0	6.2	6.3	6.3	5.9	6.0	5.6	5.2	4.8
Austria S015297Y	2.4	2.7	3.0	3.0	3.3	3.5	3.6	3.9	4.0	4.0	4.1	4.2	4.3	4.3	4.1	4.4	4.4	4.0	4.0
Portugal S046482Y	2.7	4.7	5.2	6.1	6.9	7.7	7.8	7.7	7.0	6.2	8.1	7.9	7.2	6.2	6.2	6.3	4.8	4.3	3.4
Finland S055823Y	1.0	1.1	1.3	1.5	1.7	1.8	1.7	1.7	1.5	1.5	2.0	2.6	4.6	5.0	5.2	5.7	5.3	5.4	5.4
Sweden S063365Y	4.1	5.3	6.8	7.2	7.6	8.4	7.4	6.5	5.6	5.4	5.0	5.1	5.4	6.2	6.8	6.4	7.2	6.3	7.0
United Kingdom . S070209Y	4.7	5.0	5.1	4.7	4.9	5.0	4.5	4.3	4.0	4.2	3.8	3.3	3.1	3.2	3.5	3.5	3.7	3.5	3.1
<i>Averages, including Italy</i>																			
Euro area S081187Y	2.6	3.2	3.7	4.1	4.4	4.5	4.7	4.6	4.5	4.7	4.9	5.0	5.5	5.6	5.3	5.6	5.6	5.1	4.7
EU S089134Y	3.0	3.6	4.1	4.4	4.7	4.8	4.9	4.7	4.5	4.7	4.8	4.8	5.3	5.4	5.3	5.4	5.5	5.0	4.5
<i>Averages, excluding Italy</i>																			
Euro area S097077Y	2.1	2.6	2.9	3.3	3.5	3.6	3.8	3.8	3.6	3.6	3.6	3.6	4.0	4.2	4.2	4.4	4.3	4.1	3.9
EU S104703Y	2.7	3.3	3.6	3.8	4.1	4.3	4.2	4.1	3.9	3.9	3.9	3.8	4.1	4.3	4.4	4.5	4.5	4.2	4.0
France, Germany, United Kingdom . S113971Y	2.5	3.0	3.2	3.3	3.4	3.5	3.3	3.2	3.1	3.1	3.0	2.9	3.2	3.3	3.4	3.7	3.7	3.6	3.4
United States ... S121298Y	3.2	3.7	4.2	4.4	4.7	4.9	5.0	4.9	4.9	4.9	5.0	5.1	4.9	4.6	4.4	4.6	4.5
Japan S131537Y	3.1	3.5	3.8	4.2	4.4	4.4	4.4	4.4	4.2	4.0	3.9	3.7	3.7	3.7	3.7	3.8	3.7
Canada S139202Y	5.5	6.3	7.3	7.4	7.9	8.5	8.6	8.4	8.4	9.0	9.6	9.6	9.5	9.3	9.2	9.8	9.4

Table 20

ITUE0290

Government consumption

(as a percentage of GDP)

	1980	1981	1982	1983	1984	1985	1986	1987	1988	1989	1990	1991	1992	1993	1994	1995	1996	1997	1998
Italy S148113Y	15.0	16.3	16.3	16.6	16.5	16.7	16.4	16.8	17.1	16.8	17.6	17.6	17.7	17.6	17.1	17.9	18.2	18.2	18.1
Belgium S176622Y	17.6	18.3	17.9	17.4	17.0	17.0	16.8	16.1	15.1	14.4	14.0	14.5	14.4	15.0	14.9	14.8	14.6	14.6	14.4
Denmark S200867Y	26.1	27.2	27.6	26.8	25.3	24.7	23.4	24.6	27.2	26.8	26.4	26.6	26.7	27.7	27.0	26.8	26.6	26.5	26.7
Germany S223674Y	20.3	20.7	20.6	20.2	20.0	20.1	19.9	20.0	19.7	18.8	18.3	19.2	19.8	19.9	19.6	19.9	20.0	19.4	18.9
Greece S253877Y	13.6	14.9	14.6	15.1	15.6	16.3	15.4	15.6	14.3	15.2	15.3	14.4	13.9	14.5	14.0	15.5	14.6	14.8	14.7
Spain S281976Y	12.7	13.2	13.3	13.7	13.5	14.7	14.7	15.1	14.3	14.7	15.2	15.7	16.6	17.1	16.5	16.2	16.2	15.7	15.4
France S289157Y	18.1	18.8	19.3	19.5	19.6	19.4	18.9	18.8	18.5	18.0	18.0	18.3	18.9	19.9	19.5	19.4	19.6	19.5	19.3
Ireland S312843Y	18.9	18.9	18.8	18.4	17.8	17.6	17.8	16.8	14.9	14.0	14.4	15.2	15.3	15.2	15.0	14.0	13.2	12.7	12.6
Luxembourg S340609Y	15.1	15.8	14.9	14.3	13.9	14.3	14.0	15.1	12.9	12.2	12.9	12.7	12.7	12.6	12.2	12.9	13.1	12.4	12.2
Netherlands S368535Y	17.4	17.3	17.3	17.1	16.2	15.8	15.5	15.9	15.4	14.9	14.6	14.5	14.7	14.9	14.5	14.4	14.1	13.7	13.8
Austria S402263Y	17.6	18.1	18.5	18.3	18.3	18.6	18.8	18.8	18.4	18.1	18.7	18.9	19.4	20.2	20.4	20.2	19.9	19.0	18.7
Portugal S432971Y	13.8	14.4	14.2	14.4	14.4	14.5	14.1	14.0	14.6	15.1	15.6	17.3	17.3	17.9	17.6	17.7	18.2	18.4	18.8
Finland S461931Y	17.8	18.3	18.6	19.1	19.1	20.0	20.3	20.5	20.1	19.7	21.9	25.1	25.9	24.7	23.8	23.3	23.5	22.6	21.7
Sweden S497832Y	29.3	29.6	29.5	28.9	28.0	27.9	27.5	26.7	26.0	26.1	27.2	27.1	27.8	28.0	27.1	25.7	26.1	25.8	25.7
United Kingdom . S533081Y	21.4	22.1	22.0	21.9	21.6	20.8	20.8	20.3	20.0	19.7	20.1	21.1	21.5	20.8	20.4	20.0	19.7	18.7	18.5
<i>Averages, including Italy</i>																			
Euro area S566174Y	17.7	18.3	18.3	18.4	18.2	18.3	18.0	18.1	17.8	17.3	17.4	18.0	18.4	18.8	18.4	18.6	18.7	18.3	18.0
EU S575976Y	18.8	19.5	19.5	19.4	19.2	19.2	18.9	18.9	18.6	18.2	18.3	18.8	19.2	19.4	19.1	19.1	19.1	18.7	18.4
<i>Averages, excluding Italy</i>																			
Euro area S596377Y	18.2	18.7	18.8	18.8	18.6	18.7	18.5	18.5	18.0	17.5	17.4	18.1	18.6	19.0	18.7	18.7	18.8	18.3	18.0
EU S629794Y	19.4	20.0	20.0	19.9	19.7	19.6	19.3	19.3	18.9	18.4	18.5	19.1	19.5	19.7	19.4	19.3	19.3	18.8	18.5
France, Germany, United Kingdom . S636661Y	19.9	20.5	20.6	20.4	20.3	20.1	19.8	19.7	19.4	18.8	18.7	19.4	19.9	20.1	19.8	19.8	19.8	19.2	18.9
United States ... S643898Y	17.1	17.0	18.0	17.9	17.4	17.8	18.0	18.1	17.6	17.2	17.6	17.8	17.3	16.8	16.2	16.0	15.7
Japan S669887Y	9.8	9.9	9.9	9.9	9.8	9.6	9.7	9.4	9.1	9.1	9.0	9.0	9.2	9.4	9.5	9.8	9.7
Canada S697591Y	21.6	21.5	23.2	23.0	22.1	22.2	22.1	21.5	21.2	21.4	22.7	24.1	24.6	23.9	22.5	21.7	20.8

Table 21

ITUE0300

Compensation of employees

(as a percentage of GDP)

	1980	1981	1982	1983	1984	1985	1986	1987	1988	1989	1990	1991	1992	1993	1994	1995	1996	1997	1998
Italy S728112Y	11.1	12.2	12.0	12.1	12.0	11.8	11.7	11.9	12.1	11.9	12.7	12.7	12.7	12.5	12.0	11.2	11.5	11.6	10.8
Belgium S737016Y	13.6	14.2	14.0	13.5	13.3	13.2	13.0	12.4	11.7	11.4	11.3	11.6	11.6	12.1	12.1	12.2	12.1	11.9	11.7
Denmark S768476Y	18.6	19.6	20.2	19.7	18.6	17.9	17.2	18.0	18.2	18.0	17.7	17.7	17.8	18.1	17.5	17.2	17.2	17.2	17.3
Germany S776315Y	11.0	11.3	11.2	11.0	10.7	10.6	10.6	10.6	10.4	10.0	9.7	10.4	10.6	10.8	10.5	10.4	10.3	10.0	9.7
Greece S785801Y	9.5	10.1	10.5	10.8	11.0	11.6	10.9	11.2	11.3	12.3	12.7	11.6	11.1	11.1	10.8	11.4	10.8	11.0	10.8
Spain S793241Y	9.8	10.3	10.1	10.5	10.3	10.6	10.3	10.4	10.5	10.7	11.1	11.5	12.2	12.3	11.8	11.7	11.7	11.4	11.1
France S800158Y	13.8	14.2	14.6	14.7	14.7	14.6	14.4	14.1	13.6	13.3	13.2	13.3	13.7	14.3	14.2	14.3	14.5	14.4	14.3
Ireland S809681Y	12.8	13.2	13.2	13.0	12.7	12.1	12.2	11.9	11.0	10.2	10.3	10.8	10.9	11.0	10.5	9.7	9.3	8.9	8.3
Luxembourg S820871Y	11.7	12.2	11.6	11.5	11.2	10.2	10.0	10.7	9.6	9.3	8.8
Netherlands S832230Y	12.9	12.6	12.5	12.1	11.4	11.0	10.8	11.0	10.5	9.9	9.7	9.6	9.8	10.0	9.6	9.6	9.3	9.1	9.1
Austria S866186Y	11.8	12.2	12.4	12.3	12.4	12.5	12.7	12.8	12.5	12.3	11.8	12.0	12.2	12.7	12.6	12.6	12.4	10.5	10.2
Portugal S877569Y	12.1	12.3	12.1	12.2	12.1	12.2	10.5	10.6	11.1	11.8	12.2	13.3	14.3	14.6	14.0	14.1	14.2	14.4	14.7
Finland S885118Y	12.3	12.8	13.1	13.5	13.6	14.1	14.3	14.4	14.1	13.9	15.1	17.6	18.0	16.8	15.9	15.4	15.5	14.7	14.3
Sweden S916543Y	20.8	20.7	20.6	19.9	19.3	18.9	18.7	18.1	17.8	17.9	18.8	19.0	19.4	19.2	18.3	17.3	17.7	17.6	17.4
United Kingdom . S926235Y	12.8	13.3	13.0	13.0	12.7	12.2	12.3	12.2	11.8	11.9	12.0	12.2	12.3	11.1	9.5	8.8	8.3	8.0	7.8
<i>Averages, including Italy</i>																			
Euro area S935400Y	12.0	12.4	12.4	12.4	12.2	12.2	12.0	12.0	11.7	11.5	11.6	11.9	12.1	12.2	11.9	11.8	11.8	11.6	11.3
EU S943088Y	12.5	13.0	12.9	12.9	12.7	12.5	12.4	12.3	12.1	11.9	12.0	12.3	12.5	12.4	11.8	11.6	11.6	11.3	11.0
<i>Averages, excluding Italy</i>																			
Euro area S952415Y	12.1	12.4	12.5	12.5	12.3	12.3	12.1	12.0	11.6	11.4	11.3	11.7	11.9	12.2	11.9	11.9	11.8	11.6	11.4
EU S959800Y	12.7	13.1	13.1	13.0	12.8	12.7	12.5	12.4	12.1	11.9	11.9	12.2	12.4	12.3	11.8	11.7	11.6	11.2	11.0
France, Germany, United Kingdom . S967112Y	12.4	12.8	12.8	12.7	12.6	12.4	12.3	12.2	11.8	11.6	11.5	11.8	12.0	11.9	11.4	11.2	11.1	10.7	10.5
United States ... S974886Y
Japan S984475Y	7.9	7.9	7.9	7.8	7.7	7.5	7.6	7.5	7.2	7.1	7.0	6.9	7.0	7.2	7.2	7.4	7.3
Canada S991984Y

Table 22

ITUE0310

Intermediate consumption

(as a percentage of GDP)

	1980	1981	1982	1983	1984	1985	1986	1987	1988	1989	1990	1991	1992	1993	1994	1995	1996	1997	1998
Italy S030673Y	3.5	3.7	3.8	4.1	4.1	4.4	4.3	4.5	4.5	4.4	4.3	4.4	4.5	4.6	4.5	5.6	5.7	5.5	6.3
Belgium S039749Y	3.7	3.7	3.5	3.5	3.4	3.5	3.4	3.4	3.1	2.6	2.4	2.5	2.3	2.3	2.3	2.2	2.1	2.2	2.2
Denmark S073393Y	7.1	7.2	7.1	6.7	6.4	6.4	5.8	6.2	5.9	5.8	5.6	5.8	5.8	6.3	6.2	6.2	6.2	6.1	6.2
Germany S082385Y	8.6	8.8	8.6	8.5	8.6	8.7	8.6	8.6	8.6	8.1	7.9	8.3	8.6	8.4	8.5	8.8	9.0	8.6	8.5
Greece S090029Y	4.1	4.9	4.0	4.4	4.6	4.7	4.5	4.4	3.0	2.9	2.6	2.8	2.8	3.4	3.2	4.1	3.8	3.7	3.9
Spain S097866Y	2.4	2.4	2.6	2.7	2.6	3.1	3.3	3.7	3.2	3.4	3.4	3.5	3.7	4.0	3.9	3.7	3.7	3.6	3.4
France S105160Y	2.8	3.0	3.1	3.1	3.1	3.0	2.8	3.0	3.1	2.9	2.9	3.0	3.2	3.5	3.2	2.9	2.9	2.9	2.8
Ireland S115845Y	5.9	5.6	5.5	5.3	4.9	4.9	5.0	4.4	3.7	3.5	3.8	4.0	4.1	3.9	4.1	4.0	3.7	3.6	3.9
Luxembourg S125341Y	3.5	3.6	3.5	3.1	3.0	3.2	3.0	3.1	3.8	3.5	3.4
Netherlands S150858Y	3.8	3.9	4.0	4.1	4.0	3.9	3.9	4.1	4.1	4.1	4.1	4.1	4.1	4.1	3.9	3.9	4.0	3.8	3.9
Austria S161825Y	5.1	5.1	5.3	5.2	5.1	5.3	5.3	5.2	5.2	5.1	6.2	6.3	6.5	6.9	7.1	7.0	6.9	8.0	8.6
Portugal S169978Y	2.4	2.7	2.6	2.7	2.6	2.8	2.6	2.3	2.3	2.2	2.3	3.0	2.1	2.3	2.6	2.6	3.0	4.0	4.0
Finland S181279Y	4.5	4.6	4.5	4.6	4.5	4.8	4.9	4.9	4.7	4.6	4.4	4.9	5.1	5.1	5.1	5.1	5.2	5.3	5.1
Sweden S201434Y	6.7	7.0	7.0	7.1	6.9	7.2	6.9	6.8	6.5	6.3	6.6	6.5	6.8	7.1	7.1	6.8	8.4	8.2	8.3
United Kingdom . S211728Y	8.2	8.3	8.7	8.6	8.6	8.3	8.3	8.0	7.7	6.0	6.4	7.2	7.7	8.3	9.6	9.9	10.1	9.4	10.5
<i>Averages, including Italy</i>																			
Euro area S218833Y	4.9	5.0	5.0	5.1	5.1	5.2	5.1	5.2	5.2	4.9	4.9	5.2	5.4	5.6	5.5	5.7	5.7	5.6	5.7
EU S227232Y	5.5	5.7	5.7	5.8	5.8	5.8	5.6	5.7	5.6	5.1	5.1	5.5	5.7	6.0	6.1	6.3	6.4	6.3	6.5
<i>Averages, excluding Italy</i>																			
Euro area S241412Y	5.2	5.3	5.3	5.4	5.3	5.4	5.3	5.4	5.4	5.1	5.0	5.4	5.6	5.8	5.7	5.7	5.7	5.6	5.5
EU S249158Y	5.8	6.0	6.1	6.1	6.1	6.0	5.9	5.9	5.8	5.3	5.3	5.7	6.0	6.2	6.4	6.4	6.5	6.4	6.6
France, Germany, United Kingdom . S257193Y	6.5	6.7	6.8	6.8	6.8	6.7	6.6	6.6	6.6	5.8	5.9	6.4	6.7	6.9	7.2	7.2	7.4	7.2	7.4
United States ... S265116Y
Japan S273343Y	3.0	3.1	3.1	3.2	3.2	3.2	3.3	3.2	3.1	3.2	3.2	3.3	3.4	3.5	3.6	3.7	3.7
Canada S280675Y

Table 23

ITUE0320

Current transfers

(as a percentage of GDP)

	1980	1981	1982	1983	1984	1985	1986	1987	1988	1989	1990	1991	1992	1993	1994	1995	1996	1997	1998
Italy S292552Y	17.8	19.3	20.1	20.9	20.6	20.7	21.0	20.7	20.6	21.1	21.2	21.4	22.3	23.1	22.6	19.1	19.6	19.8	19.5
Belgium S300326Y	28.5	30.7	30.6	31.5	30.8	29.7	29.1	28.9	28.0	27.2	27.0	28.2	28.5	28.9	28.3	28.2	28.4	28.0	27.5
Denmark S308663Y	19.7	20.9	21.6	21.2	20.3	19.6	18.9	19.6	21.9	23.0	22.8	23.5	24.7	25.7	27.3	26.3	25.8	24.7	24.2
Germany S315994Y	20.5	21.1	21.6	20.9	20.6	20.3	19.9	20.4	20.4	20.0	21.0	21.0	21.0	22.2	22.5	22.9	22.6	22.3	21.9
Greece S323158Y	11.1	14.3	15.3	15.1	15.1	17.0	17.2	16.7	17.4	17.5	17.1	16.5	16.1	16.7	16.6	17.3	17.2	16.9	17.2
Spain S333080Y	16.3	17.6	17.9	18.5	18.5	18.5	17.8	17.5	17.3	17.4	18.0	18.8	19.7	21.0	20.6	19.3	19.2	19.0	18.9
France S341682Y	23.2	24.8	25.9	26.4	27.0	27.1	27.0	26.8	26.2	25.6	25.7	26.4	27.3	28.7	28.3	28.2	28.7	28.9	28.4
Ireland S352363Y	15.9	17.2	18.7	19.5	19.5	19.5	20.0	20.1	19.3	15.3	15.2	15.6	16.1	16.3	16.0	15.5	15.0	14.2	13.4
Luxembourg S360596Y	26.1	28.4	27.8	27.6	26.2	25.8	25.4	26.4	25.7	25.3	25.0
Netherlands S367079Y	29.9	31.0	32.8	33.3	32.4	31.4	31.2	32.2	31.8	30.3	31.1	31.8	32.3	32.4	31.1	29.6	28.7	28.5	27.4
Austria S376201Y	21.8	22.2	22.6	22.5	22.6	23.1	23.7	24.3	23.5	22.8	22.9	23.4	23.7	25.4	25.0	25.9	25.9	25.3	24.4
Portugal S384377Y	16.0	18.8	16.2	16.8	19.9	17.9	13.9	13.7	12.6	12.0	12.9	13.9	14.1	15.9	16.3	16.5	17.1	17.2	17.7
Finland S395147Y	16.1	16.6	17.4	18.3	18.3	19.0	19.7	19.7	18.9	18.8	19.7	24.4	28.7	30.2	29.5	27.8	26.7	25.0	23.2
Sweden S402261Y	23.5	24.4	24.9	25.1	24.1	24.9	24.9	25.0	25.4	25.6	25.9	27.6	30.8	33.0	32.2	30.7	30.3	29.0	28.5
United Kingdom . S434271Y	13.9	15.1	15.6	15.5	15.9	15.8	15.2	14.4	13.4	14.8	15.0	16.3	18.6	19.6	19.2	19.2	18.6	17.8	16.7
<i>Averages, including Italy</i>																			
Euro area S447592Y	21.2	22.4	23.0	23.2	23.1	23.0	22.8	22.8	22.4	22.1	22.5	22.9	23.4	24.6	24.4	23.8	23.7	23.5	23.1
EU S457498Y	20.0	21.1	21.7	21.8	21.8	21.7	21.6	21.5	21.1	21.0	21.4	22.0	22.9	24.1	23.8	23.4	23.2	22.7	22.1
<i>Averages, excluding Italy</i>																			
Euro area S464400Y	22.0	23.1	23.7	23.8	23.7	23.6	23.3	23.4	22.9	22.3	22.8	23.3	23.7	24.9	24.8	24.7	24.6	24.4	23.9
EU S474162Y	20.3	21.4	21.9	22.0	22.0	21.9	21.7	21.7	21.1	21.0	21.5	22.1	23.1	24.2	24.0	24.0	23.8	23.2	22.6
France, Germany, United Kingdom . S481486Y	19.6	20.6	21.3	21.1	21.3	21.3	21.1	21.0	20.3	20.4	20.9	21.5	22.3	23.6	23.5	23.7	23.6	23.0	22.3
United States ... S491262Y	11.5	11.6	12.5	12.7	11.7	11.7	11.8	11.7	11.5	11.4	12.1	13.1	13.8	13.9	13.6	13.7	13.7
Japan S497813Y	12.1	12.5	12.9	13.2	12.8	12.5	12.8	13.0	12.7	12.3	13.0	12.2	12.6	13.3	13.9	14.9	15.0
Canada S524017Y	12.0	11.9	13.5	14.2	14.4	14.1	14.1	13.9	13.4	13.1	14.0	16.1	17.1	16.8	16.0	15.2	14.8

Table 24

ITUE0330

Current transfers to households

(as a percentage of GDP)

	1980	1981	1982	1983	1984	1985	1986	1987	1988	1989	1990	1991	1992	1993	1994	1995	1996	1997	1998
Italy S532761Y	14.4	15.9	16.5	17.5	17.1	17.4	17.4	17.5	17.6	17.9	18.5	18.6	19.7	19.9	19.8	17.1	17.3	17.8	17.3
Belgium S540787Y	24.0	25.9	25.8	26.5	26.0	25.3	24.9	24.8	23.8	23.5	23.3	24.3	24.8	25.2	24.7	24.7	24.8	24.6	24.2
Denmark S551378Y	16.4	17.5	17.8	17.5	16.7	16.0	15.2	16.0	17.6	18.6	18.6	19.3	19.9	21.0	22.5	21.7	21.1	20.3	19.4
Germany S558248Y	17.2	17.9	18.4	17.7	17.1	16.8	16.6	16.8	16.7	16.4	15.8	16.9	17.5	18.7	18.8	19.5	19.4	19.2	18.9
Greece S564602Y	9.4	10.9	12.8	13.1	13.4	14.3	14.4	14.8	14.9	15.3	15.2	15.1	15.0	15.3	15.4	15.7	15.7	15.6	15.8
Spain S571102Y	12.7	14.1	13.9	14.3	14.3	14.3	14.0	13.8	13.5	13.5	14.0	14.8	15.7	16.4	16.0	15.3	15.3	15.0	14.5
France S581701Y	19.1	20.2	21.1	21.4	21.7	22.0	21.9	21.5	21.4	21.1	21.2	21.8	22.5	23.8	23.4	23.4	23.6	23.7	23.5
Ireland S607310Y	12.0	13.0	14.9	15.5	15.4	15.8	16.3	16.7	15.6	13.8	13.5	14.2	14.6	14.4	14.2	13.5	13.1	12.6	11.8
Luxembourg S618041Y	22.6	23.8	23.1	22.3	21.7	21.6	21.1	21.9	23.3	22.9	22.6
Netherlands S624928Y	26.3	27.5	29.0	29.5	28.3	27.4	27.0	27.4	27.1	26.2	27.3	27.4	27.9	28.1	27.1	26.2	25.3	24.8	24.3
Austria S636652Y	18.6	19.0	19.4	19.4	19.7	20.1	20.3	20.9	20.4	19.9	19.8	20.0	20.3	21.9	22.1	22.0	21.9	21.1	20.8
Portugal S644207Y	9.7	10.8	10.8	10.7	10.8	10.8	10.9	11.7	11.4	11.3	11.8	12.9	13.9	15.5	15.2	15.5	16.4	16.6	17.0
Finland S651433Y	12.6	12.9	13.9	14.6	14.7	15.4	16.0	16.1	14.8	14.4	15.1	18.9	23.0	24.5	24.3	22.8	21.9	20.2	18.6
Sweden S660803Y	18.0	18.6	18.7	18.8	18.0	18.7	18.9	19.2	19.9	19.8	19.8	21.2	23.5	25.1	25.0	23.3	22.9	22.2	22.0
United Kingdom . S667844Y	10.7	11.9	12.8	12.8	12.9	12.8	13.0	12.2	11.4	12.8	13.0	15.2	16.7	17.8	17.6	17.3	17.0	16.5	14.3
<i>Averages, including Italy</i>																			
Euro area S677527Y	17.6	18.6	19.1	19.3	19.0	19.0	18.8	18.9	18.6	18.3	18.4	19.0	19.8	20.7	20.6	20.2	20.2	20.1	19.7
EU S686614Y	16.4	17.3	17.9	18.1	17.8	17.8	17.8	17.8	17.4	17.5	17.6	18.5	19.4	20.4	20.3	19.9	19.8	19.5	18.8
<i>Averages, excluding Italy</i>																			
Euro area S695526Y	18.2	19.2	19.7	19.8	19.5	19.4	19.2	19.2	18.8	18.4	18.4	19.1	19.8	20.9	20.7	20.8	20.8	20.6	20.2
EU S706229Y	16.7	17.5	18.2	18.2	18.0	17.9	17.9	17.8	17.4	17.4	17.4	18.4	19.4	20.4	20.3	20.3	20.2	19.8	19.1
France, Germany, United Kingdom . S715507Y	16.1	16.9	17.7	17.5	17.4	17.4	17.4	17.2	16.8	16.9	16.8	17.9	18.8	20.0	19.9	20.2	20.1	19.8	19.0
United States ... S723164Y	10.8	11.0	11.8	11.7	10.8	10.8	10.8	10.7	10.5	10.6	11.1	12.2	12.9	13.0	12.8	13.0	12.9
Japan S751930Y	10.5	11.0	11.4	11.7	11.4	11.3	11.6	12.0	11.8	11.4	11.8	11.3	11.8	12.5	13.1	14.0	14.2
Canada S759489Y	8.0	8.0	9.7	10.4	10.2	10.2	10.4	10.2	10.0	10.1	11.0	12.5	13.6	13.8	13.2	12.7	12.4

Table 25

ITUE0340

Current transfers to enterprises

(as a percentage of GDP)

	1980	1981	1982	1983	1984	1985	1986	1987	1988	1989	1990	1991	1992	1993	1994	1995	1996	1997	1998
Italy S769325Y	2.9	2.9	3.1	2.9	3.0	2.6	2.9	2.5	2.3	2.3	2.0	2.0	1.8	2.2	2.0	1.5	1.5	1.2	1.3
Belgium S782798Y	3.7	3.7	3.7	4.0	3.9	3.8	3.6	3.2	3.1	2.6	2.9	3.0	2.7	2.7	2.5	2.5	2.4	2.1	2.0
Denmark S791421Y	3.1	3.0	3.2	3.2	3.2	2.9	2.9	3.1	3.4	3.4	3.4	3.3	3.9	4.0	3.8	3.7	3.6	3.4	3.1
Germany S802819Y	2.3	2.1	2.1	2.1	2.3	2.3	2.4	2.5	2.5	2.3	2.2	2.4	2.1	2.1	2.2	2.2	2.1	1.9	1.9
Greece S811276Y	2.2	3.9	4.4	4.4	4.0	5.3	6.0	5.5	4.4	4.1	4.1	3.6	3.7	4.0	3.6	3.3	3.3	3.0	2.9
Spain S821174Y	2.1	2.0	2.5	2.6	2.8	2.4	2.1	2.2	2.7	2.5	2.5	2.6	2.5	3.2	3.0	3.1	2.8	2.8	3.0
France S828376Y	2.6	2.8	2.7	2.8	3.1	3.0	3.1	3.2	2.5	2.2	2.1	2.2	2.3	2.5	2.4	2.3	2.6	2.6	2.5
Ireland S835678Y	7.5	6.3	6.1	6.6	7.2	7.8	7.5	6.5	6.8	4.5	5.7	5.6	4.7	4.9	4.4	4.0	4.5	4.4	4.1
Luxembourg S842593Y	3.1	3.9	3.9	4.3	3.3	3.2	3.1	3.2	3.2	2.8	3.1	3.1	3.0	2.9	2.9	2.1	2.3	2.2	2.2
Netherlands S851688Y	3.1	2.9	3.1	3.3	3.5	3.6	3.6	4.4	4.1	3.5	3.1	3.3	3.2	3.0	2.6	1.9	1.9	2.2	1.9
Austria S860387Y	3.0	3.0	3.0	2.9	2.8	2.9	3.2	3.2	2.9	2.7	2.9	3.1	3.1	3.2	2.6	3.0	2.8	2.9	2.3
Portugal S870302Y	6.2	8.0	5.3	6.1	8.9	7.1	3.2	2.4	1.8	1.5	1.5	1.4	1.2	1.3	1.2	1.1	0.7	0.6	0.7
Finland S879320Y	3.2	3.3	3.2	3.2	3.2	3.1	3.2	3.0	2.6	2.8	2.9	3.5	3.6	3.4	3.2	3.4	2.8	2.5	2.3
Sweden S891237Y	4.4	4.7	5.0	5.2	5.0	5.1	4.9	4.8	4.5	4.6	4.7	5.1	5.5	5.9	5.3	5.1	4.8	4.1	3.8
United Kingdom . S898912Y	2.5	2.5	2.1	2.1	2.3	2.0	1.7	1.5	1.3	1.2	1.1	1.1	1.2	1.2	1.1	1.1	1.2	1.0	0.6
<i>Averages, including Italy</i>																			
Euro area S906744Y	2.7	2.7	2.7	2.8	3.0	2.8	2.9	2.8	2.6	2.4	2.3	2.4	2.3	2.5	2.3	2.2	2.2	2.1	2.0
EU S913970Y	2.7	2.8	2.7	2.8	3.0	2.8	2.8	2.7	2.5	2.3	2.3	2.4	2.3	2.4	2.3	2.2	2.2	2.0	1.9
<i>Averages, excluding Italy</i>																			
Euro area S924371Y	2.7	2.7	2.6	2.7	2.9	2.9	2.8	2.9	2.7	2.4	2.4	2.5	2.4	2.5	2.4	2.4	2.4	2.3	2.2
EU S932989Y	2.7	2.8	2.7	2.8	2.9	2.9	2.8	2.8	2.6	2.3	2.3	2.4	2.4	2.5	2.3	2.3	2.3	2.2	2.0
France, Germany, United Kingdom . S941487Y	2.5	2.5	2.3	2.3	2.6	2.5	2.4	2.4	2.2	2.0	1.9	2.0	1.9	2.0	2.0	2.0	2.0	1.9	1.7
United States ... S952594Y	0.4	0.4	0.5	0.7	0.6	0.6	0.6	0.7	0.7	0.6	0.5	0.5	0.5	0.6	0.5	0.5	0.5
Japan S960789Y	1.5	1.5	1.4	1.4	1.3	1.1	1.1	1.0	0.9	0.8	1.1	0.8	0.7	0.7	0.7	0.8	0.7
Canada S969991Y	2.8	2.8	2.6	2.6	2.8	2.5	2.2	2.0	1.8	1.5	1.5	1.9	1.8	1.5	1.3	1.1	1.0

Table 26

ITUE0350

Investment

(as a percentage of GDP)

	1980	1981	1982	1983	1984	1985	1986	1987	1988	1989	1990	1991	1992	1993	1994	1995	1996	1997	1998
Italy S978917Y	3.2	3.7	3.8	3.7	3.6	3.7	3.5	3.5	3.4	3.3	3.3	3.3	3.0	2.7	2.3	2.2	2.3	2.4	2.5
Belgium S985819Y	4.4	4.4	3.9	3.5	2.9	2.6	2.3	2.1	2.1	1.4	1.3	1.4	1.5	1.6	1.7	1.4	1.1	1.4	1.4
Denmark S995640Y	3.3	2.9	2.8	2.2	1.9	2.1	1.6	1.8	1.9	1.8	1.6	1.5	2.0	1.9	1.8	1.9	2.0	1.9	1.8
Germany S002537Y	3.6	3.2	2.9	2.5	2.4	2.4	2.5	2.4	2.3	2.4	2.3	2.6	2.8	2.7	2.6	2.4	2.2	1.9	1.8
Greece S011552Y	2.1	2.6	2.3	3.0	3.5	3.7	3.4	2.7	3.0	3.0	2.8	3.1	3.5	3.3	3.1	3.3	3.4	3.4	3.7
Spain S019057Y	1.9	2.3	3.1	2.8	3.0	3.7	3.7	3.5	3.7	4.3	4.9	4.8	4.0	4.2	4.0	3.7	3.1	3.1	3.3
France S027991Y	3.4	3.2	3.4	3.3	3.1	3.2	3.2	3.0	3.3	3.4	3.6	3.5	3.5	3.2	3.2	3.2	3.0	2.9	2.8
Ireland S035238Y	5.6	5.4	5.0	4.4	3.8	3.8	3.5	2.6	1.7	1.8	2.0	2.1	2.0	2.1	2.3	2.3	2.2	2.4	2.5
Luxembourg S043516Y	6.7	6.4	6.1	5.4	4.5	4.2	3.9	4.3	4.5	4.7	5.2	5.2	4.3	4.6	4.6	4.5	4.4
Netherlands S054290Y	3.3	3.2	2.9	2.5	2.6	2.3	2.1	2.1	2.1	2.0	2.0	2.2	2.1	2.1	2.1	2.0	1.9	1.9	1.9
Austria S063564Y	4.3	4.2	3.9	3.8	3.7	3.6	3.8	3.4	3.3	3.3	3.2	3.3	3.3	3.3	3.3	2.8	2.8	2.0	2.0
Portugal S070404Y	4.3	5.5	4.6	4.1	3.7	3.3	3.1	3.3	3.5	3.3	3.3	3.4	3.8	4.0	3.6	3.7	4.1	4.3	4.2
Finland S076743Y	3.8	3.7	3.9	4.0	3.6	3.7	3.6	3.8	3.9	3.1	4.0	4.1	3.8	3.1	3.2	3.0	3.0	3.2	3.0
Sweden S086619Y	4.2	4.1	3.8	3.7	3.3	3.1	2.7	2.6	2.3	2.5	2.4	2.3	2.7	1.1	3.0	2.9	2.1	2.4	1.5
United Kingdom . S096534Y	2.5	1.8	1.7	2.0	2.2	2.1	1.9	1.7	1.4	2.1	2.6	2.4	2.3	2.1	2.0	2.0	1.5	1.3	1.3
<i>Averages, including Italy</i>																			
Euro area S104073Y	3.4	3.4	3.3	3.1	3.0	3.1	3.0	2.9	3.0	3.0	3.1	3.2	3.1	2.9	2.8	2.7	2.5	2.4	2.4
EU S111339Y	3.3	3.1	3.1	2.9	2.9	2.9	2.8	2.7	2.7	2.8	3.0	3.0	3.0	2.7	2.7	2.6	2.3	2.2	2.2
<i>Averages, excluding Italy</i>																			
Euro area S119300Y	3.4	3.3	3.2	3.0	2.8	2.9	2.9	2.8	2.9	2.9	3.0	3.1	3.1	3.0	2.9	2.7	2.5	2.4	2.3
EU S127526Y	3.3	3.0	2.9	2.8	2.7	2.7	2.7	2.5	2.5	2.7	2.9	2.9	2.9	2.8	2.7	2.6	2.3	2.2	2.1
France, Germany, United Kingdom . S135345Y	3.2	2.8	2.7	2.6	2.6	2.6	2.6	2.4	2.4	2.6	2.8	2.8	2.9	2.7	2.6	2.6	2.3	2.0	2.0
United States ... S146108Y	1.9	1.7	1.6	1.6	1.6	1.7	1.8	1.8	1.8	1.8	1.9	1.9	1.9	1.9	1.8	1.8	1.8
Japan S155163Y	7.1	7.1	6.8	6.4	5.9	5.6	5.6	5.9	6.1	5.9	6.1	6.2	6.9	7.8	7.7	7.6	7.7
Canada S162293Y	3.0	3.1	3.2	2.9	2.9	3.1	2.9	2.7	2.6	2.8	2.9	3.0	2.8	2.6	2.6	2.6	2.2

METHODOLOGICAL APPENDIX

GENERAL NOTES

The series refer to the consolidated general government economic accounts of the EU countries (Belgium, Denmark, Germany, Greece, Spain, France, Ireland, Italy, Luxembourg, the Netherlands, Austria, Portugal, Finland, Sweden and the United Kingdom) and the remaining G-7 countries (the United States, Japan and Canada).

The sources used are as follows:

for the EU countries, European Commission, DG II Economic and Financial Affairs, General Government Data, March 1999, and Eurostat, http://europa.eu.int/new_cronos, supplemented by data supplied directly by the Commission;

for the United States, Japan and Canada, OECD, Statistical Compendium, 1999/1.

Owing to the differences in the methods used by the two sources in constructing national accounts, the single items are strictly comparable only for the EU countries. However, there are also breaks in some of the series for the latter since some of the data concerning Denmark, Italy and the United Kingdom were obtained by applying the new European system of accounts, ESA95, instead of the earlier version, ESA79, which was used to obtain all the data for the other EU countries.

In Italy's case the general government economic accounts, compiled by Istat, are based on ESA79 for the years from 1980 to 1994 and ESA 95 for those from 1995 to 1998. The revision resulting from the application of ESA95 also affects the value of the ratio of debt to GDP.

As regards the other EU countries, the data on general government net borrowing and debt are based on ESA79. The other items of the accounts are based on ESA95 as follows: for Denmark from 1996 to 1998 and for the UK from 1989 to 1998.

Starting with the March 2000 notifications, the general government net borrowing figure for the excessive deficit procedure will be based on ESA95. The new system of national accounts differs from the previous one in the definitions of institutional units and the names given to transactions, their contents and the times at which they are recorded.

GENERAL GOVERNMENT CONSOLIDATED ACCOUNTS IN ITALY FOR 1998: COMPARISON BETWEEN ESA79 AND ESA95 (1)

	Billions of lire			As a percentage of GDP		
	ESA79	ESA95	Difference	ESA79	ESA95	Difference
Total expenditure	1,006,204	1,013,271	7,067	49.7	49.2	-0.5
<i>of which: compensation of employees</i>	226,005	221,953	-4,052	11.2	10.8	-0.4
<i>intermediate consumption</i>	99,375	141,744	42,369	4.9	6.9	2.0
<i>social security benefits</i>	395,849	350,187	-45,662	19.6	17.0	-2.6
<i>interest payments</i>	152,609	164,058	11,449	7.5	8.0	0.5
<i>capital expenditure</i>	77,685	75,131	-2,554	3.8	3.7	-0.1
Total revenue	951,874	957,033	5,159	47.0	46.5	-0.5
<i>of which: direct taxes</i>	292,611	297,256	4,645	14.5	14.4	-0.1
<i>indirect taxes</i>	311,787	317,094	5,307	15.4	15.4	0.0
<i>social security contributions</i>	270,922	267,164	-3,758	13.4	13.0	-0.4
<i>capital taxes</i>	12,865	12,628	-237	0.6	0.6	0.0
Net borrowing	54,330	56,238	1,908	2.7	2.7	0.0
Primary balance (surplus: -)	-98,279	-107,820	-9,541	-4.9	-5.2	-0.3

(1) Rounding may cause discrepancies.

As regards the names given to transactions and their contents, the most important change in the general government accounts is the classification under intermediate consumption of social benefits in kind (these no longer appear in the secondary distribution of income account but are included as a cost item in the value of production). As regards the times at which transactions are recorded, ESA95 is based more on the accruals concept than was ESA79. In Italy's case, Istat has also redefined the general government sector, with the exclusion of some bodies and the inclusion of others.

The application of ESA95 to the 1998 general government economic account for Italy results in an increase of around 7 trillion lire in expenditure and one of around 5 trillion in revenue (see table). General government net borrowing increases by around 2 trillion lire, while the primary surplus improves by 9.5 trillion.

On the expenditure side the revisions mainly concern: intermediate consumption and social benefits (owing to the above-mentioned reclassification of social benefits in kind, which amounted to more than 43 trillion lire in 1998); compensation of employees (following the switch to recognition on an accruals basis, which in 1998 led to the exclusion of disbursements of health service contributions in respect of prior years); and interest payments (especially in connection with the inclusion on an accruals basis of interest on postal savings certificates, which had previously been recognized at redemption). The revisions on the revenue side are smaller and mainly due to the application of the accruals concept.

Some of the Commission data on the EU countries are adjusted. In particular, the Commission disaggregation does not show total capital revenue and total capital expenditure separately, but shows only the balance, i.e. net capital expenditure. Here, in order to obtain the separate items, the Commission data have been supplemented by other data provided by Eurostat and the Commission itself, and by Bank of Italy estimates where these were not available.

As a first step series were constructed for capital revenue. These were then used together with the Commission series for net expenditure to obtain series for capital expenditure. In this way it was possible to construct the series for total revenue and total expenditure. Consequently, the figures for the latter differ from those used by the EU Commission. In particular, they are not obtained by adding capital expenditure net of capital revenue to current expenditure, as the Commission does, but by adding total capital expenditure.

In addition, series were constructed for capital taxes that were then used to obtain those for tax revenue and social security contributions.

For the individual items of the economic accounts averages were calculated for the EU as a whole and for the euro-area countries (Belgium, Germany, Spain, France, Ireland, Italy, Luxembourg, the Netherlands, Austria, Portugal and Finland) - both including and excluding Italy - and for the three leading countries apart from Italy: France (F), Germany (D) and the United Kingdom (UK). The averages were weighted using the ratios of the GDP of each country expressed in ecus to the GDP of the group of countries in question. The values of GDP used were those determined for the excessive deficit procedure. Where a figure is missing for a country, the average was calculated omitting that country.

The figures for Germany up to and including 1990 refer to the country's western regions.

All the series are expressed as percentages of GDP.

Because of rounding, the sum of the separate items may sometimes differ from the total shown.

NOTES TO THE TABLES

The order in which the tables are shown is based on their code numbers. The notes to each table are set out below, together with references to the “Notes to the classification variables” section where appropriate.

TUEE0100 - NET BORROWING (+) OR NET LENDING (-)

The balance of the economic accounts (excluding financial transactions). Transactions are recorded on a cash or an accruals basis according to their economic significance. The item corresponds to the net resources that general government makes available to other sectors.

TUEE0110 - PRIMARY NET BORROWING (+) OR NET LENDING (-)

Net borrowing or lending excluding interest payments (see note to Table TUEE280).

TUEE0120 - CURRENT ACCOUNT BALANCE

Difference between current expenditure and current revenue (see notes to Tables TUEE160 and TUEE260). A positive balance indicates a deficit, a negative balance a surplus, i.e. public saving.

TUEE0130 - CAPITAL ACCOUNT BALANCE

Difference between capital expenditure and capital revenue.

TUEE0140 - GROSS PUBLIC DEBT

The definition is that adopted for the excessive deficit procedure provided for in the Treaty on the European Union (on the basis of the methods specified in Council Regulation 3605/93). The aggregate refers to the total gross debt at nominal value outstanding at the end of the year of the sector of general government, with the exception of those liabilities of which the corresponding financial assets are held by the sector of general government.

TUEE0150 - TOTAL REVENUE

Sum of current revenue and capital revenue.

TUEE0160 - CURRENT REVENUE

Sum of direct taxes, indirect taxes, social security contributions and other current revenue. Current revenue does not include current transfers from the rest of the world.

TUEE0170 - TAX REVENUE AND SOCIAL SECURITY CONTRIBUTIONS

Sum of direct and indirect taxes, social security contributions and capital taxes (see the notes to Tables TUEE210, TUEE220 and TUEE230).

TUEE0180 - TAX REVENUE AND SOCIAL SECURITY CONTRIBUTIONS, EXCLUDING CAPITAL TAXES

Sum of direct and indirect taxes and social security contributions (see the notes to Tables TUEE210, TUEE220 and TUEE230).

TUEE0190 - TAX REVENUE

Sum of direct and indirect taxes and capital taxes (see the notes to Tables TUEE210 and TUEE220).

TUEE0200 - TAX REVENUE, EXCLUDING CAPITAL TAXES

Sum of direct and indirect taxes (see the notes to Tables TUEE210 and TUEE220).

TUEE0210 - DIRECT TAXES

Taxes on income and wealth due to general government or the rest of the world.

TUEE0220 - INDIRECT TAXES

Taxes linked to the production and importation of goods and services due to general government or the institutions of the European Union (including taxes on the production of agricultural products and sugar and customs duties).

TUEE0230 - SOCIAL SECURITY CONTRIBUTIONS

Sum of actual social security contributions paid by workers and employers (directly or through ad hoc agencies) and imputed social security contributions. The figures for Canada do not include imputed social security contributions.

TUEE0240 - TOTAL EXPENDITURE

Sum of current and capital expenditure.

TUEE0250 - TOTAL EXPENDITURE, EXCLUDING INTEREST PAYMENTS

Difference between total expenditure and interest expenditure (see the note to Table TUEE280).

TUEE0260 - CURRENT EXPENDITURE

Sum of current transfers, interest expenditure and general government consumption.

TUEE0270 - CURRENT EXPENDITURE, EXCLUDING INTEREST PAYMENTS

Difference between current expenditure and interest expenditure (see the note to Table TUEE280).

TUEE0280 - INTEREST PAYMENTS

Interest payments and other borrowing costs.

TUEE0290 - GOVERNMENT CONSUMPTION

Compensation of employees, purchases of goods and services and consumption of fixed capital.

TUEE0300 - COMPENSATION OF EMPLOYEES

General government payments in cash or kind to employees, including net earnings and actual and imputed social security contributions.

TUEE0310 - INTERMEDIATE CONSUMPTION

This item is stated net of sales of goods and services and does not include the consumption of fixed capital.

TUEE0320 - CURRENT TRANSFERS

Sum of current transfers to enterprises and households (including private non-profit institutions), net transfers to the rest of the world and other current transfers (e.g. net accident insurance premiums).

TUEE0330 - CURRENT TRANSFERS TO HOUSEHOLDS

Social benefits, including all current transfers to households serving to insure against certain types of risks and necessities; current transfers to private non-profit institutions include all voluntary contributions and membership fees.

TUEE0340 - CURRENT TRANSFERS TO ENTERPRISES

Production and import subsidies that general government or the institutions of the European Union pay to resident units producing goods and services.

TUEE0350 - INVESTMENT

The item includes both net fixed capital formation, consisting of the value of purchases of durable goods (other than for military purposes) to be used for a period of at least one year, and net purchases of land and intangible assets.

