

Public Finance Statistics in the European Union

13 June 2022

For further information: statistiche@bancaditalia.it
www.bancaditalia.it/statistiche/index.html

Figure 1

General government debt in 2021 (1)
(percentage of GDP)

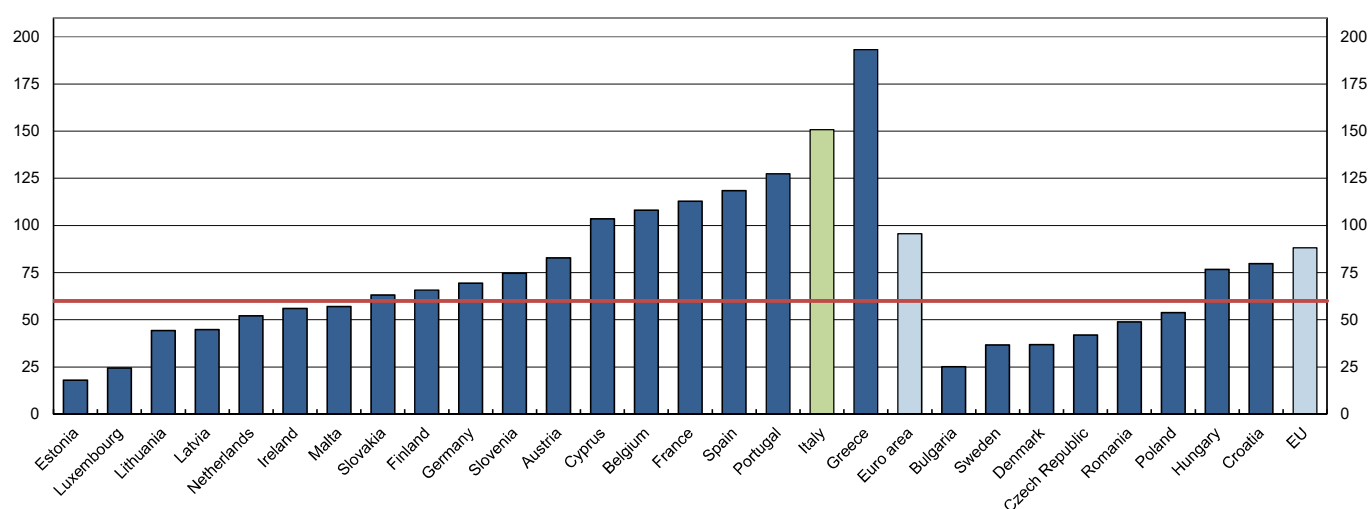
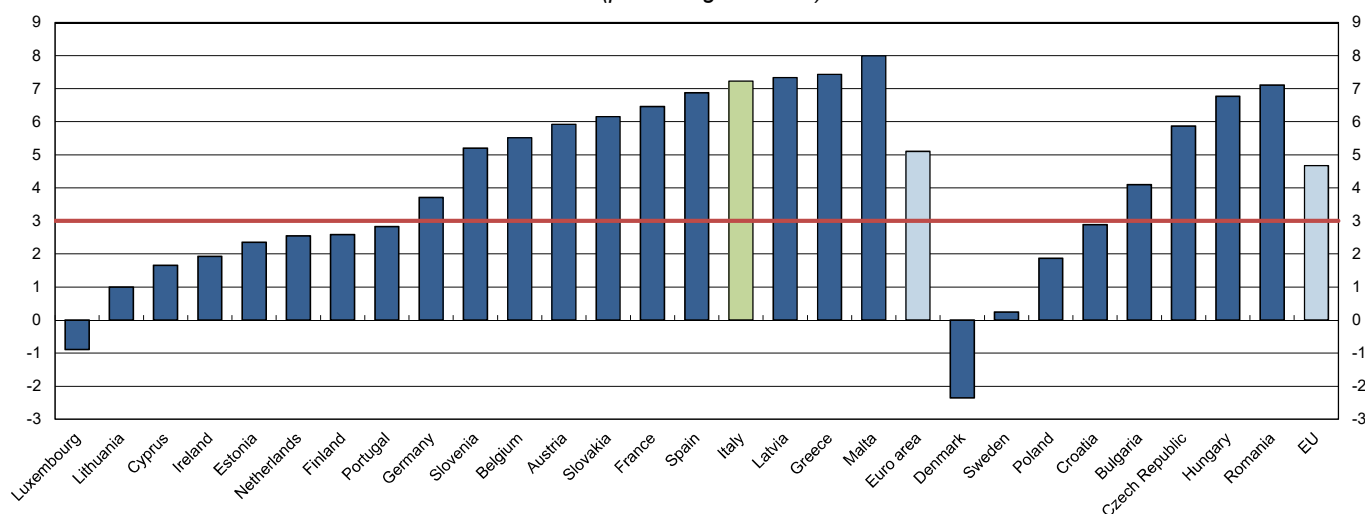


Figure 2

General government net borrowing (+) / net lending (-) in 2021
(percentage of GDP)



(1) Averages for the Euro area and the EU are computed excluding lending provided as financial assistance to euro area member states both bilaterally or via the European Financial Stability Facility (EFSF).

General information

- I Unless indicated otherwise, figures have been computed by the Bank of Italy.
- II Symbols and Conventions:
 - the phenomenon does not occur;
 - the phenomenon occurs but its value is not known;
 - .. the value is known but is nil or less than half the final digit shown.

Figures in parentheses in roman type () are provisional. Those in parentheses in italics () are estimated.
- III The tables are identified both by a number and by an alphanumeric code that defines the content of the table in the electronic database holding the information to be released to the public. A similar code identifies the different aggregates shown in each table.

Contents

General information		<i>Access to data in BDS:</i>
Table 1	- Net borrowing (+)/lending (-)	<u>TUEE0100</u>
Table 2	- Primary net borrowing (+)/lending (-)	<u>TUEE0110</u>
Table 3	- Current account balance	<u>TUEE0120</u>
Table 4	- Capital account balance	<u>TUEE0130</u>
Table 5	- Gross public debt	<u>TUEE0140</u>
Table 6	- Total revenue	<u>TUEE0150</u>
Table 7	- Current revenue	<u>TUEE0160</u>
Table 8	- Fiscal burden	<u>TUEE0170</u>
Table 9	- Direct taxes	<u>TUEE0210</u>
Table 10	- Indirect taxes	<u>TUEE0220</u>
Table 11	- Social security contributions	<u>TUEE0230</u>
Table 12	- Total expenditure	<u>TUEE0240</u>
Table 13	- Total expenditure, excluding interest payments	<u>TUEE0250</u>
Table 14	- Current expenditure	<u>TUEE0260</u>
Table 15	- Current expenditure, excluding interest payments	<u>TUEE0270</u>
Table 16	- Interest payments	<u>TUEE0280</u>
Table 17	- Final consumption expenditure	<u>TUEE0290</u>
Table 18	- Compensation of employees	<u>TUEE0300</u>
Table 19	- Social benefits other than social transfers in kind	<u>TUEE0330</u>
Table 20	- Capital expenditure	<u>TUEE0400</u>
Table 21	- Investment	<u>TUEE0350</u>
Methodological appendix		

Net borrowing (+)/lending (-)

(as a percentage of GDP)

	2004	2005	2006	2007	2008	2009	2010	2011	2012	2013	2014	2015	2016	2017	2018	2019	2020	2021
Italy	3.5	4.1	3.6	1.3	2.6	5.1	4.2	3.6	2.9	2.9	3.0	2.6	2.4	2.4	2.2	1.5	9.6	7.2
Belgium	0.2	2.7	-0.2	-0.1	1.1	5.4	4.1	4.3	4.3	3.1	3.1	2.4	2.4	0.7	0.9	2.0	9.0	5.5
Germany	3.3	3.3	1.7	-0.3	0.1	3.2	4.4	0.9	0.0	0.0	-0.6	-1.0	-1.2	-1.3	-1.9	-1.5	4.3	3.7
Estonia	-2.4	-1.1	-2.9	-2.7	2.6	2.2	-0.2	-1.1	0.3	-0.2	-0.7	-0.1	0.4	0.5	0.6	-0.1	5.6	2.4
Ireland	-1.3	-1.6	-2.8	-0.3	7.0	13.9	32.1	13.6	8.5	6.4	3.6	2.0	0.8	0.3	-0.1	-0.5	5.1	1.9
Greece	8.8	6.2	5.9	6.7	10.2	15.1	11.3	10.5	9.1	13.4	3.6	5.9	-0.2	-0.6	-0.9	-1.1	10.2	7.4
Spain	0.1	-1.2	-2.1	-1.9	4.6	11.3	9.5	9.7	11.6	7.5	6.1	5.3	4.3	3.1	2.6	3.1	10.3	6.9
France	3.6	3.4	2.4	2.6	3.3	7.2	6.9	5.2	5.0	4.1	3.9	3.6	3.6	3.0	2.3	3.1	8.9	6.5
Cyprus	3.7	2.2	1.0	-3.2	-0.9	5.4	4.7	5.7	5.8	5.6	8.8	0.9	-0.3	-1.9	3.6	-1.3	5.8	1.7
Latvia	1.2	0.5	0.5	0.6	4.3	9.5	8.6	4.3	1.4	1.2	1.6	1.4	0.0	0.8	0.8	0.6	4.5	7.3
Lithuania	1.4	0.3	0.3	0.8	3.1	9.1	6.9	8.9	3.2	2.6	0.6	0.3	-0.3	-0.4	-0.5	-0.5	7.3	1.0
Luxembourg	1.4	0.2	-1.9	-4.4	-3.4	0.2	0.3	-0.7	-0.5	-0.8	-1.3	-1.3	-1.9	-1.4	-3.0	-2.3	3.4	-0.9
Malta	4.2	2.8	2.5	2.0	4.1	3.1	2.2	3.0	3.4	2.2	1.5	0.8	-1.1	-3.3	-2.1	-0.6	9.5	8.0
Netherlands	1.8	0.4	0.0	0.2	-0.1	5.2	5.3	4.5	4.0	3.0	2.3	2.1	0.0	-1.3	-1.4	-1.7	3.7	2.5
Austria	4.8	2.5	2.5	1.4	1.5	5.3	4.4	2.6	2.2	2.0	2.7	1.0	1.5	0.8	-0.2	-0.6	8.0	5.9
Portugal	6.2	6.1	4.2	2.9	3.7	9.9	11.4	7.7	6.2	5.1	7.4	4.4	1.9	3.0	0.3	-0.1	5.8	2.8
Slovenia	1.9	1.3	1.2	0.0	1.4	5.8	5.6	6.6	4.0	14.6	5.5	2.8	1.9	0.1	-0.7	-0.4	7.8	5.2
Slovakia	2.3	2.9	3.6	2.1	2.5	8.1	7.5	4.3	4.4	2.9	3.1	2.7	2.6	1.0	1.0	1.3	5.5	6.2
Finland	-2.2	-2.7	-4.0	-5.1	-4.2	2.5	2.5	1.0	2.2	2.5	3.0	2.4	1.7	0.7	0.9	0.9	5.5	2.6
<i>Euro area</i>	2.9	2.6	1.5	0.6	2.2	6.2	6.3	4.2	3.8	3.1	2.5	2.0	1.5	0.9	0.4	0.7	7.1	5.1
<i>Euro area excluding Italy</i>	2.7	2.3	1.1	0.5	2.1	6.5	6.7	4.4	4.0	3.1	2.4	1.9	1.3	0.7	0.1	0.5	6.6	4.7
Bulgaria	-1.8	-1.6	-2.7	0.0	-1.4	4.4	3.7	1.7	0.8	0.7	5.4	1.9	-0.3	-1.6	-1.7	-2.1	4.0	4.1
Czech Republic	2.4	3.0	2.2	0.6	2.0	5.4	4.2	2.7	3.9	1.3	2.1	0.6	-0.7	-1.5	-0.9	-0.3	5.8	5.9
Denmark	-2.1	-5.0	-5.0	-5.0	-3.2	2.8	2.7	2.1	3.5	1.2	-1.1	1.3	0.1	-1.8	-0.8	-4.1	0.2	-2.3
Croatia	5.0	3.5	3.1	2.2	2.9	6.2	6.4	7.9	5.5	5.5	5.5	3.4	0.9	-0.8	0.0	-0.2	7.3	2.9
Hungary	6.6	7.8	9.3	5.1	3.8	4.7	4.4	5.2	2.3	2.6	2.8	2.0	1.8	2.5	2.1	2.1	7.8	6.8
Poland	5.0	3.9	3.5	1.9	3.6	7.3	7.4	5.0	3.8	4.2	3.6	2.6	2.4	1.5	0.2	0.7	6.9	1.9
Romania	1.1	0.8	2.1	2.7	5.4	9.1	6.9	5.4	3.7	2.1	1.2	0.6	2.6	2.6	2.8	4.3	9.3	7.1
Sweden	-0.2	-1.8	-2.1	-3.3	-1.9	0.8	0.1	0.3	1.1	1.5	1.5	0.0	-1.0	-1.4	-0.8	-0.6	2.7	0.2
<i>EU excluding euro area</i>	1.5	0.5	0.4	-0.5	1.0	4.6	4.0	3.1	2.9	2.3	1.9	1.3	0.6	-0.1	0.0	0.0	5.0	2.3
<i>EU</i>	2.7	2.3	1.4	0.5	2.0	6.0	6.0	4.1	3.7	3.0	2.4	1.9	1.4	0.8	0.4	0.6	6.8	4.7
<i>EU excluding Italy</i>	2.6	2.0	1.0	0.3	1.9	6.2	6.3	4.2	3.8	3.0	2.3	1.8	1.2	0.5	0.1	0.4	6.4	4.3
United States	5.8	4.4	3.3	4.0	7.3	13.1	12.4	11.0	9.2	5.8	5.2	4.6	5.4	4.3	6.1	6.4	15.3
Japan	4.4	3.0	2.9	4.1	9.7	9.1	9.0	8.2	7.6	5.6	3.7	3.6	3.1	2.5	3.0	9.0
United Kingdom	3.0	3.1	2.7	2.6	5.1	10.0	9.2	7.4	8.1	5.5	5.5	4.5	3.3	2.4	2.2	2.2	12.8	8.1
Canada	-0.8	-1.6	-1.8	-1.8	-0.2	3.9	4.7	3.3	2.5	1.5	-0.2	0.1	0.5	0.1	-0.4	0.0	11.4	5.0

Primary net borrowing (+)/lending (-)

(as a percentage of GDP)

	2004	2005	2006	2007	2008	2009	2010	2011	2012	2013	2014	2015	2016	2017	2018	2019	2020	2021
Italy	-1.1	-0.4	-0.8	-3.4	-2.3	0.7	0.0	-1.1	-2.2	-2.0	-1.6	-1.6	-1.5	-1.4	-1.5	-1.8	6.1	3.7
Belgium	-4.6	-1.7	-4.4	-4.1	-2.9	1.5	0.5	0.8	0.8	-0.1	-0.1	-0.5	-0.3	-1.7	-1.3	0.0	7.1	3.9
Germany	0.5	0.6	-1.1	-2.9	-2.5	0.5	1.9	-1.6	-2.3	-1.9	-2.2	-2.4	-2.3	-2.4	-2.8	-2.3	3.7	3.1
Estonia	-2.6	-1.3	-3.1	-2.9	2.4	2.0	-0.3	-1.2	0.2	-0.3	-0.8	-0.2	0.4	0.4	0.5	-0.1	5.6	2.3
Ireland	-2.4	-2.6	-3.8	-1.3	5.7	11.9	29.3	10.3	4.3	2.1	-0.3	-0.6	-1.5	-1.7	-1.8	-1.8	4.1	1.1
Greece	4.0	1.5	1.5	2.2	5.4	10.1	5.2	2.8	3.7	9.2	-0.4	2.3	-3.5	-3.7	-4.3	-4.2	7.2	5.0
Spain	-1.9	-3.0	-3.7	-3.5	3.0	9.6	7.6	7.3	8.5	3.9	2.6	2.3	1.5	0.6	0.2	0.8	8.0	4.7
France	0.8	0.7	-0.2	-0.1	0.4	4.6	4.4	2.4	2.4	1.8	1.7	1.6	1.8	1.2	0.6	1.6	7.6	5.1
Cyprus	0.7	-1.0	-1.9	-6.0	-3.5	3.1	2.7	3.5	2.4	2.4	5.5	-2.2	-2.9	-4.4	1.3	-3.5	3.6	-0.2
Latvia	0.4	-0.1	0.1	0.2	3.7	8.0	6.8	2.5	-0.3	-0.3	0.3	0.2	-1.1	-0.2	0.1	-0.1	3.8	6.8
Lithuania	0.5	-0.4	-0.4	0.2	2.4	7.9	5.1	7.1	1.2	0.9	-1.0	-1.2	-1.6	-1.5	-1.4	-1.3	6.6	0.6
Luxembourg	1.2	0.0	-2.1	-4.6	-3.7	-0.2	-0.1	-1.2	-1.0	-1.3	-1.7	-1.7	-2.3	-1.7	-3.3	-2.6	3.2	-1.0
Malta	0.5	-1.0	-1.3	-1.4	0.8	-0.1	-0.8	-0.1	0.4	-0.6	-1.2	-1.5	-3.2	-5.0	-3.6	-1.9	8.2	6.8
Netherlands	-0.6	-1.7	-2.0	-1.8	-2.1	3.1	3.5	2.7	2.3	1.4	0.8	0.8	-1.2	-2.3	-2.3	-2.5	3.0	2.0
Austria	1.8	-0.7	-0.6	-1.8	-1.5	2.2	1.5	-0.2	-0.5	-0.7	0.3	-1.3	-0.5	-1.0	-1.8	-2.0	6.7	4.8
Portugal	3.6	3.6	1.4	-0.1	0.6	6.9	8.5	3.3	1.3	0.3	2.5	-0.1	-2.2	-0.8	-3.0	-3.1	2.9	0.4
Slovenia	0.3	-0.2	-0.1	-1.2	0.3	4.5	4.0	4.7	2.0	12.0	2.3	-0.4	-1.1	-2.5	-2.8	-2.1	6.2	3.9
Slovakia	0.1	1.2	2.1	0.6	1.2	6.7	6.2	2.8	2.6	1.0	1.2	0.9	0.9	-0.5	-0.3	0.1	4.3	5.0
Finland	-3.9	-4.3	-5.5	-6.5	-5.6	1.2	1.2	-0.4	0.7	1.3	1.8	1.3	0.6	-0.3	0.0	0.1	4.8	2.1
<i>Euro area</i>	-0.2	-0.3	-1.3	-2.2	-0.8	3.4	3.5	1.2	0.8	0.3	-0.1	-0.3	-0.6	-1.0	-1.4	-1.0	5.6	3.6
<i>Euro area excluding Italy</i>	0.0	-0.3	-1.4	-2.0	-0.5	4.0	4.2	1.7	1.4	0.7	0.2	-0.1	-0.5	-0.9	-1.4	-0.8	5.5	3.6
Bulgaria	-3.6	-3.2	-4.0	-1.1	-2.3	3.7	3.0	1.0	0.0	0.0	4.5	0.9	-1.2	-2.4	-2.4	-2.7	3.5	3.6
Czech Republic	1.3	2.0	1.1	-0.4	1.0	4.2	2.8	1.4	2.5	0.0	0.8	-0.4	-1.6	-2.2	-1.6	-1.0	5.0	5.1
Denmark	-4.6	-7.0	-6.8	-6.6	-4.6	0.9	0.8	0.1	1.7	-0.4	-2.6	-0.2	-1.2	-2.6	-1.6	-4.8	-0.4	-2.9
Croatia	3.3	1.8	1.4	0.6	1.1	4.0	4.0	5.2	2.4	2.4	2.1	0.0	-2.1	-3.4	-2.3	-2.4	5.3	1.3
Hungary	2.3	3.7	5.4	1.1	-0.3	0.2	0.3	1.1	-2.2	-1.9	-1.2	-1.4	-1.3	-0.2	-0.2	-0.1	5.5	4.4
Poland	2.3	1.5	1.2	-0.3	1.5	4.8	4.9	2.4	1.1	1.7	1.7	0.8	0.7	-0.1	-1.2	-0.6	5.6	0.8
Romania	-0.4	-0.4	1.3	2.1	4.7	7.6	5.3	3.8	1.8	0.2	-0.6	-1.0	1.1	1.4	1.8	3.2	8.0	5.7
Sweden	-2.1	-3.6	-3.9	-5.0	-3.5	-0.5	-1.0	-0.9	0.1	0.6	0.8	-0.6	-1.5	-1.9	-1.3	-1.0	2.4	0.0
<i>EU excluding euro area</i>	-0.8	-1.6	-1.5	-2.3	-0.7	2.7	2.1	1.1	0.9	0.5	0.3	-0.2	-0.7	-1.2	-1.0	-1.0	4.0	1.4
<i>EU</i>	-0.2	-0.5	-1.3	-2.2	-0.8	3.3	3.3	1.2	0.8	0.3	-0.1	-0.3	-0.6	-1.0	-1.3	-1.0	5.3	3.3
<i>EU excluding Italy</i>	-0.1	-0.5	-1.4	-2.0	-0.5	3.8	3.9	1.6	1.3	0.7	0.2	-0.1	-0.5	-1.0	-1.3	-0.8	5.2	3.2
United States	1.9	0.5	-0.6	-0.1	3.4	8.9	8.2	6.6	4.9	1.8	1.3	0.8	1.5	0.4	2.2	2.3	11.4
Japan	2.7	1.3	1.1	2.2	7.7	7.2	7.0	6.2	5.7	3.7	1.9	1.9	1.5	0.9	1.6	7.5
United Kingdom	1.2	1.2	0.8	0.5	3.0	8.2	6.4	4.3	5.3	2.7	2.9	2.2	0.9	-0.3	-0.3	0.1	10.9	5.5
Canada	-5.6	-6.0	-6.0	-5.7	-3.9	0.2	1.1	-0.3	-0.9	-1.8	-3.3	-3.0	-2.5	-2.7	-3.3	-3.0	8.4	2.4

Current account balance

(as a percentage of GDP)

	2004	2005	2006	2007	2008	2009	2010	2011	2012	2013	2014	2015	2016	2017	2018	2019	2020	2021
Italy	-0.2	-0.1	-1.6	-2.8	-1.5	1.0	0.4	0.3	-0.6	-0.1	-0.2	-1.0	-0.5	-1.0	-0.9	-1.7	4.5	1.6
Belgium	-2.2	-2.3	-2.6	-2.8	-1.8	2.0	0.8	0.3	0.0	-0.3	-0.2	-0.4	-0.2	-1.8	-1.8	-0.8	6.0	2.6
Germany	0.3	0.2	-1.4	-3.0	-3.2	-0.3	-0.1	-2.3	-2.9	-2.9	-3.3	-3.7	-4.0	-4.5	-5.1	-4.7	0.7	-0.2
Estonia	-6.5	-5.6	-7.5	-8.5	-4.2	-3.2	-3.2	-4.1	-5.0	-4.6	-5.5	-4.9	-4.3	-4.9	-4.2	-4.4	-0.1	-2.9
Ireland	-4.5	-4.8	-5.9	-4.4	1.2	7.2	7.0	6.9	5.9	4.1	1.3	-0.8	-1.2	-1.8	-2.4	-2.9	2.6	-0.3
Greece	2.4	2.7	3.2	3.4	5.1	9.9	8.3	8.7	4.5	0.4	1.3	0.6	-2.4	-2.9	-3.6	-3.5	4.2	3.1
Spain	-4.5	-5.7	-6.8	-6.9	-0.6	5.6	4.6	5.4	4.5	4.6	3.8	3.0	2.3	1.1	0.4	0.8	7.2	3.5
France	-0.9	-1.3	-2.3	-2.1	-1.8	1.8	1.7	0.3	-0.2	-0.9	-0.7	-0.7	-0.7	-1.7	-1.8	-1.2	4.1	2.1
Cyprus	0.8	0.0	-2.1	-7.0	-4.7	0.5	-0.5	1.5	2.7	1.7	-2.6	-2.7	-3.2	-4.5	-5.5	-5.2	2.7	-0.4
Latvia	-3.1	-2.9	-4.9	-5.4	-0.2	4.7	3.3	-1.3	-2.3	-2.2	-1.5	-2.1	-3.0	-3.5	-3.8	-3.1	-0.8	1.3
Lithuania	-2.3	-2.8	-3.4	-4.0	-1.7	5.7	4.1	2.2	1.0	-0.1	-1.4	-2.4	-3.1	-3.6	-3.4	-3.0	2.9	-2.0
Luxembourg	-4.8	-6.2	-6.9	-9.1	-7.9	-5.1	-5.4	-5.8	-5.3	-5.1	-5.6	-5.7	-6.5	-6.1	-7.9	-7.2	-2.5	-6.1
Malta	2.0	1.1	0.8	-0.8	1.8	1.0	0.6	0.6	1.0	0.1	-0.7	-1.4	-3.9	-5.8	-5.2	-3.8	5.8	4.2
Netherlands	-2.0	-3.0	-3.5	-3.3	-3.9	0.2	0.7	0.4	0.1	-0.8	-1.1	-1.3	-3.4	-4.3	-4.5	-4.9	0.3	-0.8
Austria	-2.4	-1.5	-1.5	-2.8	-2.8	0.3	0.1	-1.4	-2.0	-2.2	-2.5	-3.1	-2.0	-3.0	-3.7	-4.2	3.9	1.8
Portugal	1.7	2.3	0.9	0.0	0.5	5.7	5.3	4.2	4.2	2.8	1.9	0.9	0.5	-1.0	-2.2	-2.6	1.8	0.2
Slovenia	-2.8	-3.0	-3.4	-5.0	-4.0	0.5	0.6	1.3	0.1	0.2	-0.5	-1.2	-1.3	-3.2	-4.4	-4.1	3.7	0.9
Slovakia	-1.0	-2.0	-0.7	-1.3	-1.5	3.4	4.1	1.3	1.7	0.4	-0.2	-2.1	-0.8	-2.2	-2.2	-1.9	1.8	3.3
Finland	-6.0	-6.2	-7.1	-8.5	-7.6	-1.5	-1.1	-2.9	-1.9	-1.6	-1.2	-1.2	-2.4	-3.1	-3.2	-3.2	0.9	-1.7
<i>Euro area</i>	-1.0	-1.4	-2.5	-3.2	-2.0	1.7	1.4	0.4	-0.3	-0.6	-0.9	-1.3	-1.6	-2.4	-2.8	-2.6	3.0	1.0
<i>Euro area excluding Italy</i>	-1.2	-1.6	-2.7	-3.3	-2.1	1.9	1.6	0.4	-0.3	-0.7	-1.1	-1.4	-1.8	-2.7	-3.1	-2.8	2.8	0.9
Bulgaria	-5.4	-5.4	-6.3	-6.7	-6.0	0.4	0.1	-0.7	-1.6	-1.6	-1.1	-1.4	-3.8	-4.0	-5.0	-5.8	0.1	1.2
Czech Republic	-4.6	-4.4	-4.2	-5.0	-3.8	-0.1	-0.4	-1.5	-2.2	-2.3	-2.1	-3.4	-4.0	-4.9	-4.9	-4.5	0.6	1.3
Denmark	-4.6	-7.4	-7.7	-7.9	-6.6	-0.5	-0.8	-1.7	-1.9	-3.1	-6.1	-3.5	-4.0	-5.3	-4.6	-7.2	-4.0	-5.9
Croatia	-3.9	-3.7	-4.0	-5.2	-4.7	-1.1	0.3	1.5	0.1	0.3	0.1	-1.2	-3.5	-4.4	-4.8	-5.6	1.0	-1.6
Hungary	1.8	2.9	3.2	-0.3	-0.2	1.2	1.5	1.5	-0.8	-0.6	-1.6	-3.4	-3.2	-3.2	-4.2	-4.3	-1.8	-0.9
Poland	1.8	0.1	-0.6	-2.5	-1.4	1.9	2.2	0.1	-0.3	0.5	-0.3	-1.2	-0.8	-2.4	-3.7	-2.8	2.4	-2.4
Romania	-3.9	-3.2	-4.7	-3.7	-1.4	3.4	1.6	-1.0	-1.0	-2.0	-2.2	-3.0	-1.3	0.5	-0.3	0.9	5.0	3.5
Sweden	-4.2	-5.9	-6.2	-7.3	-6.1	-3.5	-4.3	-4.1	-3.2	-2.7	-2.8	-4.2	-5.4	-5.9	-5.7	-5.5	-2.4	-4.5
<i>EU excluding euro area</i>	-2.6	-3.7	-4.1	-5.1	-3.8	-0.1	-0.5	-1.5	-1.7	-1.6	-2.4	-2.9	-3.3	-3.9	-4.2	-4.2	-0.1	-2.1
<i>EU</i>	-1.2	-1.6	-2.7	-3.5	-2.3	1.5	1.2	0.1	-0.5	-0.8	-1.1	-1.6	-1.8	-2.6	-3.0	-2.9	2.6	0.5
<i>EU excluding Italy</i>	-1.4	-1.9	-2.9	-3.6	-2.4	1.6	1.3	0.1	-0.5	-0.9	-1.3	-1.7	-2.0	-2.9	-3.3	-3.0	2.3	0.4
United States	1.9	0.5	-0.3	0.0	3.0	8.0	7.9	6.7	5.4	2.4	2.0	1.5	2.2	2.3	2.9	3.0	11.8
Japan	0.3	-0.8	-1.0	0.2	4.4	4.6	4.5	3.9	2.9	1.4	0.4	0.5	-0.5	-1.3	-1.1	4.3
United Kingdom	0.2	0.0	-0.2	-0.3	1.2	5.3	5.2	3.9	4.2	2.5	2.3	1.2	0.1	-1.1	-1.3	-1.3	7.9	4.0
Canada	-4.1	-5.1	-5.5	-5.7	-4.0	-1.0	-0.5	-1.4	-2.0	-2.7	-3.8	-3.8	-3.7	-4.2	-4.6	-4.0	6.8	0.8

Capital account balance*(as a percentage of GDP)*

	2004	2005	2006	2007	2008	2009	2010	2011	2012	2013	2014	2015	2016	2017	2018	2019	2020	2021
Italy	3.7	4.2	5.3	4.2	4.1	4.1	3.8	3.2	3.6	3.0	3.2	3.5	2.9	3.4	3.1	3.2	5.1	5.6
Belgium	2.4	5.1	2.4	2.7	2.9	3.4	3.3	4.1	4.4	3.5	3.2	2.8	2.6	2.4	2.7	2.7	3.1	3.0
Germany	3.0	3.1	3.0	2.8	3.3	3.4	4.5	3.2	2.9	2.9	2.8	2.7	2.8	3.1	3.1	3.2	3.6	4.0
Estonia	4.1	4.5	4.6	5.7	6.8	5.4	3.0	3.0	5.3	4.4	4.8	4.7	4.7	5.3	4.8	4.3	5.7	5.3
Ireland	3.2	3.2	3.1	4.1	5.8	6.7	25.1	6.8	2.6	2.3	2.3	2.8	2.0	2.1	2.3	2.4	2.5	2.2
Greece	6.4	3.5	2.7	3.3	5.1	5.2	3.0	1.8	4.6	12.9	2.3	5.3	2.2	2.3	2.7	2.3	5.9	4.3
Spain	4.6	4.5	4.7	5.0	5.2	5.6	5.0	4.3	7.0	2.9	2.3	2.3	2.0	2.0	2.2	2.2	3.0	3.4
France	4.5	4.6	4.7	4.8	5.0	5.4	5.2	4.9	5.1	4.9	4.6	4.3	4.3	4.7	4.1	4.2	4.8	4.4
Cyprus	2.8	2.1	3.1	3.8	3.9	4.9	5.2	4.2	3.1	3.9	11.4	3.6	3.0	2.6	9.1	4.0	3.1	2.1
Latvia	4.2	3.4	5.4	5.9	4.5	4.8	5.3	5.6	3.8	3.5	3.1	3.5	3.0	4.3	4.7	3.7	5.3	6.0
Lithuania	3.7	3.1	3.7	4.9	4.8	3.4	2.8	6.7	2.2	2.7	2.0	2.7	2.8	3.1	2.9	2.5	4.4	3.0
Luxembourg	6.2	6.4	5.0	4.7	4.5	5.3	5.8	5.1	4.8	4.3	4.3	4.4	4.6	4.8	4.9	4.9	5.9	5.2
Malta	2.2	1.8	1.6	2.8	2.3	2.1	1.6	2.5	2.3	2.1	2.2	2.2	2.8	2.5	3.2	3.2	3.7	3.8
Netherlands	3.7	3.4	3.5	3.5	3.8	4.9	4.7	4.1	3.9	3.8	3.4	3.3	3.3	3.0	3.1	3.1	3.4	3.4
Austria	7.2	4.0	4.0	4.1	4.3	5.1	4.4	4.0	4.1	4.1	5.2	4.1	3.6	3.8	3.5	3.6	4.1	4.1
Portugal	4.5	3.8	3.2	2.9	3.2	4.2	6.1	3.5	2.0	2.3	5.4	3.5	1.5	4.0	2.6	2.5	4.0	2.6
Slovenia	4.8	4.3	4.6	5.1	5.4	5.3	5.0	5.3	3.9	14.4	6.0	4.1	3.2	3.3	3.7	3.7	4.1	4.3
Slovakia	3.3	4.9	4.2	3.3	4.0	4.8	3.4	3.0	2.7	2.5	3.4	4.8	3.4	3.2	3.3	3.2	3.7	2.9
Finland	3.8	3.5	3.1	3.4	3.4	4.0	3.6	3.9	4.1	4.1	4.2	3.6	4.1	3.8	4.1	4.2	4.6	4.3
<i>Euro area</i>	3.9	4.0	4.0	3.9	4.2	4.5	4.9	3.9	4.1	3.7	3.4	3.3	3.1	3.4	3.2	3.3	4.0	4.1
<i>Euro area excluding Italy</i>	4.0	3.9	3.8	3.8	4.2	4.6	5.1	4.0	4.3	3.8	3.5	3.3	3.1	3.4	3.3	3.3	3.9	3.8
Bulgaria	3.7	3.8	3.6	6.7	4.6	4.0	3.5	2.5	2.4	2.4	6.5	3.2	3.5	2.3	3.2	3.6	3.8	2.8
Czech Republic	7.0	7.4	6.4	5.6	5.8	5.5	4.5	4.2	6.1	3.6	4.2	4.0	3.3	3.4	4.0	4.2	5.2	4.6
Denmark	2.6	2.5	2.7	2.9	3.4	3.3	3.5	3.8	5.4	4.3	5.0	4.8	4.1	3.5	3.9	3.1	4.1	3.6
Croatia	9.0	7.2	7.0	7.4	7.5	7.3	6.2	6.4	5.4	5.2	5.4	4.6	4.4	3.6	4.8	5.4	6.3	4.5
Hungary	4.8	4.9	6.1	5.3	4.0	3.5	3.0	3.8	3.2	3.2	4.4	5.4	5.0	5.7	6.3	6.4	9.6	7.6
Poland	3.2	3.8	4.2	4.3	5.0	5.4	5.2	4.9	4.0	3.7	4.0	3.8	3.2	3.9	3.9	3.6	4.6	4.2
Romania	5.0	4.0	6.8	6.4	6.8	5.7	5.3	6.4	4.7	4.1	3.4	3.7	3.9	2.2	3.1	3.5	4.3	3.6
Sweden	4.0	4.1	4.0	4.0	4.2	4.3	4.4	4.5	4.3	4.2	4.3	4.2	4.3	4.5	4.8	4.9	5.1	4.7
<i>EU excluding euro area</i>	4.1	4.2	4.5	4.6	4.8	4.7	4.5	4.6	4.5	3.9	4.3	4.2	3.9	3.8	4.2	4.1	5.0	4.4
<i>EU</i>	3.9	4.0	4.1	4.0	4.3	4.5	4.8	4.0	4.2	3.7	3.5	3.5	3.2	3.4	3.4	3.4	4.2	4.1
<i>EU excluding Italy</i>	4.0	3.9	3.9	3.9	4.3	4.6	5.0	4.1	4.3	3.8	3.6	3.4	3.2	3.4	3.4	3.4	4.1	3.9
United States	3.8	3.9	3.7	3.9	4.4	5.1	4.5	4.2	3.8	3.4	3.2	3.1	3.2	2.0	3.2	3.4	3.6
Japan	4.2	3.9	3.9	3.9	5.3	4.5	4.5	4.3	4.7	4.2	3.3	3.1	3.6	3.8	4.2	4.7
United Kingdom	2.8	3.1	2.9	2.9	3.9	4.6	4.0	3.5	3.8	3.0	3.2	3.3	3.2	3.4	3.4	3.5	4.8	4.1
Canada	3.3	3.6	3.7	3.9	3.8	4.9	5.2	4.7	4.6	4.2	3.6	3.9	4.2	4.3	4.3	4.0	4.6	4.3

Gross public debt*(as a percentage of GDP)*

	2004	2005	2006	2007	2008	2009	2010	2011	2012	2013	2014	2015	2016	2017	2018	2019	2020	2021
Italy	105.1	106.6	106.7	103.9	106.2	116.6	119.2	119.7	126.5	132.5	135.4	135.3	134.8	134.2	134.4	134.1	155.3	150.8
Belgium	97.2	95.1	91.5	87.3	93.2	100.2	100.3	103.5	104.8	105.5	107.0	105.2	105.0	102.0	99.8	97.7	112.8	108.2
Germany	65.2	67.5	66.9	64.2	65.7	73.2	82.0	79.4	80.7	78.3	75.3	71.9	69.0	64.6	61.2	58.9	68.7	69.3
Estonia	5.1	4.7	4.6	3.8	4.5	7.2	6.7	6.2	9.8	10.2	10.6	10.1	10.0	9.1	8.2	8.6	19.0	18.1
Ireland	28.1	26.1	23.6	23.9	42.5	61.8	86.2	110.5	119.7	120.0	104.3	76.7	74.3	67.8	63.1	57.2	58.4	56.0
Greece	102.9	107.4	103.6	103.1	109.4	126.7	147.5	175.2	162.0	178.2	180.3	176.7	180.5	179.5	186.4	180.7	206.3	193.3
Spain	45.4	42.4	39.1	35.8	39.7	53.3	60.5	69.9	90.0	100.5	105.1	103.3	102.8	101.9	100.5	98.3	120.0	118.4
France	65.9	67.4	64.6	64.5	68.8	83.0	85.3	87.8	90.6	93.4	94.9	95.6	98.0	98.1	97.8	97.4	114.6	112.9
Cyprus	64.8	63.4	59.3	54.0	45.5	54.3	56.4	65.9	80.3	104.0	109.1	107.2	103.1	92.9	98.4	91.1	115.0	103.6
Latvia	14.6	11.9	10.0	8.4	18.5	36.7	47.7	45.1	42.4	40.4	41.6	37.1	40.4	39.0	37.1	36.7	43.3	44.8
Lithuania	18.7	17.6	17.3	15.9	14.6	28.0	36.2	37.1	39.7	38.7	40.5	42.5	39.7	39.1	33.7	35.9	46.6	44.3
Luxembourg	7.8	8.0	8.2	8.1	14.6	15.3	19.1	18.5	20.9	22.4	21.9	21.1	19.6	21.8	20.8	22.3	24.8	24.4
Malta	71.3	69.9	64.3	61.9	61.8	66.3	65.5	70.0	66.6	66.4	62.1	56.2	54.7	47.7	43.7	40.7	53.4	57.0
Netherlands	50.3	49.8	45.2	43.0	54.7	56.8	59.2	61.7	66.2	67.7	67.9	64.6	61.9	56.9	52.4	48.5	54.3	52.1
Austria	65.2	68.6	67.3	65.0	68.7	79.9	82.7	82.4	81.9	81.3	84.0	84.9	82.8	78.5	74.1	70.6	83.3	82.8
Portugal	67.1	72.2	73.7	72.7	75.6	87.8	100.2	114.4	129.0	131.4	132.9	131.2	131.5	126.1	121.5	116.6	135.2	127.4
Slovenia	26.9	26.4	26.1	22.8	21.8	34.5	38.3	46.5	53.6	70.0	80.3	82.6	78.5	74.2	70.3	65.6	79.8	74.7
Slovakia	41.7	34.7	31.4	30.3	28.6	36.4	40.8	43.3	51.9	54.9	53.7	51.8	52.4	51.6	49.6	48.1	59.7	63.1
Finland	42.6	39.9	38.1	33.9	32.6	41.5	46.9	48.3	53.6	56.2	59.8	63.6	63.2	61.2	59.8	59.6	69.0	65.8
<i>Euro area</i>	69.7	70.4	68.4	66.0	69.7	80.2	85.7	87.6	91.0	93.0	93.1	91.2	90.4	87.9	85.8	83.8	97.2	95.6
<i>Euro area excluding Italy</i>	62.0	62.6	60.3	58.1	62.2	72.8	78.9	81.2	84.4	85.8	85.6	83.5	82.6	79.8	77.5	75.4	87.8	86.6
Bulgaria	35.7	26.6	20.9	16.3	13.0	13.7	15.3	15.2	16.6	17.0	27.0	25.9	29.1	25.1	22.1	20.0	24.7	25.1
Czech Republic	28.4	27.7	27.6	27.3	28.1	33.4	37.1	39.7	44.2	44.4	41.9	39.7	36.6	34.2	32.1	30.1	37.7	41.9
Denmark	44.2	37.4	31.5	27.3	33.3	40.2	42.6	46.1	44.9	44.0	44.3	39.8	37.2	35.9	34.0	33.6	42.1	36.7
Croatia	40.0	40.9	38.5	37.2	39.1	48.4	57.3	63.7	69.4	80.3	83.9	83.3	79.8	76.7	73.3	71.1	87.3	79.8
Hungary	58.8	60.5	64.4	65.5	71.7	78.0	80.0	80.3	78.1	77.2	76.5	75.7	74.8	72.1	69.1	65.5	79.6	76.8
Poland	45.1	46.6	47.3	44.5	46.7	49.8	53.5	54.7	54.4	56.5	51.1	51.3	54.2	50.6	48.8	45.6	57.1	53.8
Romania	18.9	15.9	12.4	11.9	12.3	21.8	29.6	34.0	37.1	37.6	39.2	37.8	37.3	35.1	34.7	35.3	47.2	48.8
Sweden	48.5	48.7	43.6	38.9	37.5	40.7	38.1	37.2	37.5	40.3	45.0	43.7	42.3	40.7	38.9	34.9	39.6	36.7
<i>EU excluding euro area</i>	43.6	41.9	39.0	35.9	37.5	42.4	44.8	46.1	46.6	48.0	48.2	46.8	46.1	43.9	42.1	39.7	48.7	46.6
<i>EU</i>	66.8	67.1	64.8	62.2	65.4	75.5	80.3	82.0	84.9	86.8	87.0	85.0	84.2	81.6	79.6	77.4	90.0	88.1
<i>EU excluding Italy</i>	59.6	59.7	57.2	54.8	58.4	68.4	73.6	75.7	78.4	79.8	79.6	77.6	76.7	74.0	71.7	69.4	81.2	79.7
United States	65.9	65.3	64.0	64.4	73.2	86.4	94.9	99.3	102.9	104.4	104.4	104.9	107.0	106.0	107.3	108.6	134.1	127.6
Japan	154.5	154.6	152.9	152.9	158.5	177.1	181.4	196.2	205.3	208.3	214.6	217.5	218.7	218.4	221.8	223.5	240.9
United Kingdom	38.2	39.4	40.4	41.4	49.0	62.8	74.0	79.5	82.7	83.6	85.5	86.0	85.8	85.2	84.5	83.8	102.5	102.8
Canada	76.0	75.7	74.5	70.6	71.6	83.9	86.4	89.4	93.5	90.4	92.4	98.0	98.4	93.8	92.8	92.9	126.9	117.3

Total revenue*(as a percentage of GDP)*

	2004	2005	2006	2007	2008	2009	2010	2011	2012	2013	2014	2015	2016	2017	2018	2019	2020	2021
Italy	43.4	43.2	44.2	45.4	45.3	46.0	45.7	45.6	47.6	48.1	47.9	47.8	46.7	46.3	46.2	46.9	47.4	48.3
Belgium	49.1	49.1	49.0	48.6	49.7	49.2	49.8	51.0	52.2	53.0	52.5	51.3	50.8	51.3	51.4	49.9	50.2	49.3
Germany	43.5	43.5	43.6	43.7	44.1	45.0	43.8	44.4	44.9	45.0	44.9	45.1	45.5	45.5	46.2	46.5	46.5	47.8
Estonia	36.5	34.8	36.3	36.5	36.8	43.7	40.5	38.5	39.0	38.6	38.5	39.6	39.0	38.8	38.9	39.6	40.3	40.0
Ireland	34.1	34.6	36.3	35.9	34.5	33.0	32.8	33.6	34.0	34.2	33.9	27.0	27.3	25.9	25.5	24.7	22.2	23.0
Greece	38.8	39.4	39.2	40.4	40.7	38.9	41.7	44.7	47.6	49.4	47.1	48.2	50.2	49.1	49.5	49.0	49.8	49.4
Spain	38.7	39.7	40.6	41.1	36.9	35.0	36.5	36.4	37.9	38.9	39.2	38.8	38.2	38.2	39.2	39.3	41.5	43.7
France	49.4	49.9	50.4	49.9	50.0	50.0	50.0	51.1	52.1	53.1	53.3	53.2	53.0	53.5	53.4	52.3	52.5	52.8
Cyprus	34.9	37.1	37.7	40.8	39.3	36.7	37.1	36.5	36.4	37.4	40.6	39.7	37.7	38.4	39.1	39.7	39.3	42.4
Latvia	33.9	34.3	35.9	34.0	34.0	35.5	37.2	38.0	37.4	37.3	37.3	37.2	37.5	37.9	38.5	37.6	38.8	37.6
Lithuania	32.7	33.8	34.1	34.5	35.0	35.8	35.5	33.6	33.0	32.9	34.1	34.9	34.5	33.6	34.5	35.2	35.7	37.7
Luxembourg	42.3	43.2	41.3	41.7	41.3	42.5	41.7	42.2	42.3	42.1	41.9	41.7	41.9	42.6	45.1	45.2	43.7	43.2
Malta	37.6	39.6	39.7	38.9	38.1	38.0	37.9	38.9	38.8	38.6	38.7	37.7	37.5	37.7	37.9	36.7	36.9	37.5
Netherlands	41.7	41.8	43.1	42.2	43.3	42.5	42.6	42.4	42.8	43.6	43.6	42.6	43.6	43.7	43.7	43.7	43.9	43.8
Austria	48.9	48.6	47.8	47.9	48.4	48.8	48.4	48.3	49.0	49.7	49.7	50.1	48.5	48.5	48.9	49.2	49.0	50.0
Portugal	40.0	40.6	41.1	41.6	41.6	40.4	40.5	42.4	42.7	44.8	44.4	43.8	42.9	42.4	42.9	42.6	43.5	45.3
Slovenia	44.7	45.1	44.3	43.4	43.7	43.5	44.6	44.2	45.4	45.7	45.3	45.9	44.2	44.0	44.2	43.8	43.5	43.9
Slovakia	35.6	36.9	35.2	34.3	34.5	36.3	34.8	37.2	36.9	39.7	40.3	43.0	40.1	38.6	38.8	39.4	39.9	40.7
Finland	51.3	51.7	52.0	51.7	52.1	51.6	51.4	52.6	53.3	54.3	54.3	54.1	53.9	53.0	52.5	52.3	51.6	52.4
<i>Euro area</i>	44.1	44.4	44.8	44.9	44.7	44.7	44.6	45.2	46.3	46.9	46.8	46.4	46.3	46.2	46.4	46.3	46.5	47.3
<i>Euro area excluding Italy</i>	44.3	44.6	44.9	44.8	44.5	44.4	44.4	45.1	46.0	46.7	46.6	46.2	46.2	46.2	46.5	46.2	46.4	47.2
Bulgaria	39.6	38.4	36.3	37.7	38.5	34.8	32.5	32.0	33.5	37.0	37.8	38.5	35.1	37.1	38.7	38.4	38.1	39.0
Czech Republic	40.0	39.3	39.3	39.8	38.9	38.9	39.5	40.5	40.8	41.4	40.5	41.3	40.5	40.5	41.5	41.4	41.6	40.5
Denmark	55.1	56.2	54.8	54.6	53.6	53.7	54.0	54.4	54.5	54.6	56.4	53.2	52.4	52.3	51.3	53.6	53.3	53.3
Croatia	43.5	43.0	43.1	43.5	43.1	42.8	42.1	41.1	42.9	42.8	43.2	44.8	45.9	45.5	45.5	46.3	47.2	46.4
Hungary	42.1	41.5	42.1	44.8	44.9	45.8	44.4	43.8	46.8	47.4	47.3	48.4	45.0	44.3	44.0	43.9	43.4	41.1
Poland	38.4	40.3	40.9	41.0	40.6	37.8	38.4	39.1	39.4	38.8	39.0	39.1	38.7	39.8	41.3	41.0	41.3	42.3
Romania	32.7	32.7	33.5	34.7	32.3	30.3	33.1	34.2	33.9	33.5	34.2	35.5	32.0	30.8	32.0	31.9	32.7	32.8
Sweden	52.7	54.1	53.2	52.6	51.9	51.5	50.3	49.4	49.9	50.2	49.2	49.3	50.7	50.6	50.7	49.7	49.9	50.0
<i>EU excluding euro area</i>	46.4	46.7	46.2	46.0	44.8	44.0	44.1	44.3	44.8	44.9	44.9	44.8	44.2	44.1	44.4	44.3	44.5	44.5
<i>EU</i>	44.4	44.6	45.0	45.1	44.7	44.6	44.5	45.1	46.1	46.6	46.6	46.2	46.0	45.9	46.1	46.0	46.2	46.9
<i>EU excluding Italy</i>	44.6	44.9	45.1	45.0	44.6	44.4	44.3	45.0	45.8	46.4	46.4	46.0	45.9	45.8	46.1	45.8	46.1	46.7
United States	31.1	32.5	33.3	33.4	32.3	30.1	30.6	30.9	30.9	33.1	33.1	33.4	32.9	33.8	31.8	31.8	32.5
Japan	30.6	31.5	31.7	31.5	30.6	30.3	31.2	32.0	32.7	34.3	35.2	35.1	35.1	35.8	35.7	37.1
United Kingdom	36.9	38.0	37.9	38.2	39.0	37.0	37.9	38.1	37.3	38.1	37.3	37.4	37.8	38.4	38.3	38.1	38.5	39.4
Canada	40.7	40.9	41.3	41.2	39.8	40.4	39.2	39.1	39.2	39.3	39.3	40.8	41.1	41.2	41.8	41.4	42.5	41.7

Current revenue*(as a percentage of GDP)*

	2004	2005	2006	2007	2008	2009	2010	2011	2012	2013	2014	2015	2016	2017	2018	2019	2020	2021
Italy	42.6	42.7	43.9	45.2	45.0	45.0	45.3	44.9	47.3	47.5	47.5	47.2	46.3	45.9	46.0	46.7	47.1	47.9
Belgium	48.5	48.6	48.4	48.1	49.2	48.8	49.2	50.4	51.4	52.0	51.6	50.5	50.0	50.6	50.6	49.3	49.6	48.5
Germany	43.0	43.1	43.2	43.3	43.7	44.7	43.4	44.0	44.5	44.6	44.5	44.7	45.0	45.2	45.8	46.1	46.1	47.3
Estonia	36.1	34.5	35.5	35.7	36.3	41.5	39.1	37.0	37.1	36.8	37.4	38.5	38.5	37.9	37.8	38.6	39.2	39.0
Ireland	32.9	33.4	35.0	34.4	33.3	32.4	32.4	33.1	33.7	33.9	33.5	26.7	26.8	25.6	25.1	24.4	21.9	22.7
Greece	37.2	37.5	36.7	37.9	38.5	37.6	39.6	42.3	45.1	45.3	44.7	45.2	48.4	47.7	48.0	47.3	47.0	46.3
Spain	37.5	38.6	39.6	40.2	36.1	34.1	35.7	35.6	37.0	37.9	38.2	37.7	37.4	37.5	38.3	38.5	40.5	42.2
France	48.9	49.5	50.1	49.7	49.8	49.7	49.8	50.8	51.9	52.9	53.0	52.8	52.7	53.2	52.9	51.7	52.2	51.9
Cyprus	33.2	35.2	36.6	40.6	39.1	36.2	36.6	35.9	35.9	36.5	39.8	39.1	37.5	37.7	38.1	39.3	38.8	41.1
Latvia	33.4	33.3	35.0	33.3	33.2	34.4	35.6	36.3	35.6	35.7	35.7	35.7	36.7	36.9	37.1	36.3	37.4	36.6
Lithuania	32.3	33.0	33.1	33.1	34.0	34.4	33.0	31.4	31.1	30.9	31.4	33.0	33.7	33.1	33.8	34.3	35.0	37.0
Luxembourg	42.0	43.0	41.1	41.6	41.1	42.3	41.5	42.0	42.1	41.9	41.7	41.5	41.7	42.4	44.9	44.9	43.5	43.0
Malta	36.1	36.4	36.8	37.8	37.4	37.0	36.2	37.2	36.7	36.6	36.4	34.6	36.8	36.9	36.5	35.2	34.6	35.9
Netherlands	41.3	41.5	42.6	41.9	43.0	42.2	42.3	42.1	42.6	43.3	43.3	42.3	43.3	43.4	43.4	43.4	43.6	43.4
Austria	48.7	48.4	47.6	47.6	48.2	48.3	48.2	48.1	48.8	49.4	49.5	49.9	48.4	48.3	48.7	49.0	48.9	49.9
Portugal	38.9	39.4	40.3	40.8	41.0	39.7	39.4	41.5	41.1	44.0	43.7	43.0	42.3	42.0	42.4	42.2	43.2	44.2
Slovenia	44.3	44.8	44.0	43.0	43.2	42.9	44.1	43.8	44.7	44.5	43.8	44.0	43.8	43.6	43.7	43.1	42.9	43.1
Slovakia	35.4	36.7	34.9	33.9	34.2	35.3	33.7	35.7	35.7	38.3	39.0	40.6	39.4	38.2	37.9	38.5	39.2	40.0
Finland	50.9	51.3	51.6	51.3	51.6	51.3	51.0	52.3	52.9	53.9	54.0	53.7	53.6	52.5	52.1	52.0	51.2	52.0
<i>Euro area</i>	43.5	43.8	44.3	44.4	44.2	44.1	44.1	44.7	45.8	46.3	46.3	45.9	45.8	45.8	45.9	45.8	46.1	46.6
<i>Euro area excluding Italy</i>	43.7	44.0	44.4	44.3	44.0	43.9	43.9	44.6	45.5	46.1	46.1	45.6	45.7	45.7	45.9	45.6	45.9	46.4
Bulgaria	39.4	38.1	35.9	36.3	37.4	33.7	31.1	30.7	31.8	34.8	35.2	34.6	34.5	36.0	37.9	37.5	36.7	37.8
Czech Republic	39.6	39.0	38.7	39.2	38.1	37.6	38.0	39.2	39.8	40.4	39.3	39.3	39.8	39.8	40.7	40.5	40.6	39.6
Denmark	54.7	56.1	54.7	54.5	53.4	53.6	53.8	54.0	54.3	55.1	57.0	53.7	52.5	52.3	51.3	53.4	53.3	53.2
Croatia	43.3	42.7	43.0	43.4	42.9	42.6	41.9	40.9	42.7	42.5	42.9	44.3	45.2	45.0	45.0	45.4	45.6	44.4
Hungary	41.7	40.9	41.2	43.9	44.3	44.5	42.5	41.7	44.7	44.9	44.3	44.5	44.4	43.3	42.7	42.1	41.8	39.2
Poland	38.4	39.9	40.4	40.5	40.1	37.2	37.3	37.4	38.1	37.8	37.8	38.0	38.1	39.0	40.1	39.9	40.1	41.4
Romania	32.3	32.4	33.4	33.4	31.6	29.9	31.9	32.7	32.2	32.0	32.0	32.7	30.6	29.4	31.0	30.7	31.0	30.9
Sweden	52.4	53.9	53.0	52.5	51.8	51.4	50.2	49.3	49.4	49.7	48.9	49.0	50.5	50.4	50.4	49.5	49.6	49.6
<i>EU excluding euro area</i>	46.2	46.4	45.9	45.5	44.4	43.4	43.3	43.3	44.0	44.2	44.1	43.6	43.7	43.6	43.7	43.5	43.7	43.7
<i>EU</i>	43.8	44.1	44.5	44.6	44.2	44.0	44.0	44.5	45.5	46.0	46.0	45.6	45.5	45.4	45.6	45.5	45.7	46.2
<i>EU excluding Italy</i>	44.0	44.4	44.6	44.5	44.1	43.9	43.8	44.4	45.2	45.8	45.8	45.3	45.4	45.4	45.6	45.3	45.5	45.9
United States	28.9	30.2	30.9	30.9	29.9	27.5	28.0	28.4	28.4	29.9	30.3	30.7	30.4	30.1	29.5	29.7	30.3
Japan
United Kingdom	35.9	36.6	37.0	37.1	36.5	35.9	37.0	37.2	36.2	36.0	35.7	35.9	36.3	36.8	36.8	36.7	37.0	38.1
Canada

Fiscal burden*(as a percentage of GDP)*

	2004	2005	2006	2007	2008	2009	2010	2011	2012	2013	2014	2015	2016	2017	2018	2019	2020	2021
Italy	39.2	39.0	40.1	41.4	41.2	41.7	41.4	41.3	43.3	43.4	43.1	42.9	42.2	41.8	41.7	42.3	42.8	43.5
Belgium	45.7	45.4	45.3	45.0	45.8	45.3	45.5	46.4	47.4	48.2	47.7	46.8	46.0	46.5	46.6	45.2	45.7	44.9
Germany	38.9	39.0	39.1	39.2	39.5	40.0	38.6	38.9	39.6	39.7	39.5	39.9	40.3	40.5	41.0	41.2	41.3	42.4
Estonia	31.0	29.7	30.4	30.9	31.2	35.0	33.2	31.5	31.7	31.7	32.2	33.4	33.6	32.9	33.1	33.6	34.2	34.4
Ireland	30.8	31.2	32.6	32.0	30.4	28.9	28.3	29.0	29.4	29.7	29.8	23.9	24.3	23.4	23.1	22.6	20.5	21.6
Greece	31.9	33.3	32.5	33.4	33.6	32.8	34.4	36.7	39.3	38.6	39.3	39.6	41.9	42.1	42.5	41.7	41.1	40.9
Spain	34.8	35.9	36.7	37.1	32.8	30.5	32.1	32.0	33.2	34.0	34.6	34.5	34.2	34.4	35.2	35.2	37.3	38.9
France	44.2	44.7	45.2	44.7	44.6	44.3	44.4	45.6	46.7	47.7	47.9	47.8	47.8	48.4	48.2	47.1	47.7	47.2
Cyprus	29.3	31.1	31.8	35.7	34.4	31.5	31.6	31.6	31.6	31.7	33.6	32.9	32.1	32.7	32.9	34.2	34.2	36.6
Latvia	27.6	27.8	28.6	28.3	28.1	27.6	28.3	29.1	29.1	29.5	29.8	29.9	30.8	31.2	31.2	30.9	31.9	30.7
Lithuania	29.3	29.4	30.3	30.2	30.7	30.6	28.6	27.4	27.1	27.0	27.6	29.0	29.8	29.5	30.1	30.4	31.0	32.8
Luxembourg	37.6	38.8	36.6	37.0	36.3	37.6	37.0	37.5	37.8	37.6	37.5	36.1	36.7	37.9	40.4	40.6	39.6	39.1
Malta	31.0	32.6	33.0	33.7	32.8	33.0	32.0	32.8	32.5	32.3	32.4	30.3	31.3	30.9	30.9	30.4	30.2	31.3
Netherlands	35.3	35.5	36.3	35.8	36.1	35.4	35.8	35.7	35.8	36.3	37.2	37.0	38.5	38.8	38.8	39.3	39.8	39.6
Austria	43.2	42.0	41.4	41.4	42.2	41.9	41.8	41.9	42.5	43.3	43.3	43.7	42.2	42.3	42.7	43.0	42.8	43.9
Portugal	33.4	34.3	34.8	34.9	34.8	33.2	33.6	35.3	34.3	37.0	36.9	36.9	36.4	36.4	36.8	36.6	37.4	37.9
Slovenia	38.7	39.4	38.9	38.1	37.7	37.5	38.2	37.7	38.1	37.7	37.6	37.7	37.7	37.4	37.6	37.5	37.7	37.9
Slovakia	31.7	31.3	29.2	29.1	28.9	28.8	27.9	28.9	28.7	31.0	31.9	32.6	33.1	33.9	34.0	34.5	35.1	35.8
Finland	41.8	42.1	42.1	41.4	41.1	40.8	40.6	41.8	42.5	43.5	43.6	43.6	43.7	42.9	42.4	42.2	41.8	42.7
<i>Euro area</i>	39.3	39.5	39.9	40.0	39.6	39.4	39.2	39.7	40.8	41.3	41.3	41.1	41.1	41.2	41.4	41.2	41.6	42.1
<i>Euro area excluding Italy</i> ..	39.3	39.6	39.9	39.7	39.3	38.9	38.8	39.4	40.3	40.9	41.0	40.8	40.9	41.1	41.3	41.1	41.4	41.9
Bulgaria	31.4	30.8	30.5	30.3	30.3	26.5	25.3	25.3	25.9	28.0	28.2	28.7	29.0	29.6	29.5	30.2	30.4	32.2
Czech Republic	34.4	34.2	34.0	34.4	33.3	32.4	32.7	33.8	34.4	34.8	34.0	34.1	34.9	35.3	35.9	35.8	35.9	34.9
Denmark	47.9	49.4	47.8	47.7	45.9	46.3	46.3	46.3	46.9	47.9	50.6	48.1	46.9	46.8	45.5	48.0	48.0	48.0
Croatia	36.1	36.0	36.5	36.9	36.8	36.3	35.8	35.0	35.6	36.2	36.3	36.7	37.2	37.1	37.4	37.5	36.9	36.1
Hungary	36.9	36.4	36.3	39.2	39.2	38.7	36.8	36.3	38.9	38.5	38.4	38.7	39.0	37.8	36.8	36.3	36.0	33.6
Poland	33.0	33.9	34.6	35.5	35.1	32.3	32.3	32.7	33.1	33.1	33.1	33.4	34.3	35.0	36.0	35.9	36.4	37.6
Romania	28.1	28.7	29.3	28.9	27.3	25.8	27.0	28.2	27.8	27.3	27.4	28.0	26.6	25.7	26.7	26.7	27.0	27.2
Sweden	45.9	46.9	46.2	45.2	44.3	44.1	43.2	42.4	42.5	42.9	42.6	43.0	44.5	44.5	44.3	43.4	43.5	43.7
<i>EU excluding euro area</i> ..	40.1	40.4	39.9	39.7	38.4	37.4	37.3	37.4	37.9	38.2	38.4	38.2	38.6	38.5	38.4	38.4	38.6	38.7
<i>EU</i>	39.4	39.6	39.9	40.0	39.4	39.1	39.0	39.4	40.4	40.9	40.9	40.7	40.8	40.9	41.0	40.8	41.2	41.6
<i>EU excluding Italy</i>	39.4	39.7	39.9	39.7	39.1	38.7	38.6	39.1	39.9	40.5	40.6	40.4	40.6	40.7	40.9	40.6	40.9	41.4
United States	25.1	26.5	27.2	27.1	26.1	23.4	23.8	24.2	24.4	26.0	26.3	26.7	26.4	27.3	25.5	25.7	26.4
Japan	26.2	27.3	27.9	27.7	26.9	26.8	27.8	28.5	29.2	30.6	30.8	30.9	31.3	32.0	32.1	33.5
United Kingdom	34.0	34.5	34.7	34.8	35.5	33.3	34.4	34.9	34.0	33.8	33.5	33.7	34.2	34.6	34.5	34.6	34.8	36.2
Canada

Direct taxes*(as a percentage of GDP)*

	2004	2005	2006	2007	2008	2009	2010	2011	2012	2013	2014	2015	2016	2017	2018	2019	2020	2021
Italy	12.8	12.8	13.7	14.5	14.6	14.1	14.1	13.8	14.8	14.9	14.6	14.7	14.6	14.4	14.0	14.4	15.1	15.0
Belgium	16.3	16.4	16.2	15.9	16.3	15.1	15.4	15.9	16.2	16.7	16.7	16.3	16.0	16.6	16.8	15.7	15.7	15.6
Germany	10.5	10.9	11.6	12.0	12.3	11.5	11.0	11.4	11.9	12.1	12.1	12.3	12.7	12.9	13.2	13.2	12.7	13.5
Estonia	7.9	6.9	7.0	7.3	7.7	7.4	6.6	6.3	6.6	7.2	7.4	7.8	7.5	7.2	7.5	7.4	7.8	8.6
Ireland	12.9	12.8	13.7	13.2	12.3	11.9	11.7	12.1	12.7	12.8	12.8	10.6	10.7	10.3	10.5	10.2	10.0	10.8
Greece	8.1	9.0	8.3	8.3	8.1	8.5	8.3	9.4	11.0	10.5	9.8	9.5	10.2	10.0	10.4	9.7	9.2	9.2
Spain	10.0	10.8	11.4	12.6	10.3	9.1	9.1	9.2	10.0	10.0	10.1	9.9	9.9	10.1	10.6	10.4	11.2	11.9
France	11.1	11.3	11.8	11.7	11.9	10.7	11.2	11.7	12.4	12.9	12.7	12.7	12.5	12.8	13.2	13.1	13.2	13.0
Cyprus	6.7	7.8	9.2	11.9	11.1	9.6	9.4	10.1	9.9	10.4	10.4	9.9	9.3	9.5	9.5	9.4	9.7	10.6
Latvia	7.5	7.5	7.9	8.2	9.0	7.0	7.3	7.5	7.7	7.7	7.8	7.8	8.3	8.5	7.4	7.0	7.2	7.2
Lithuania	8.7	9.0	9.6	9.1	9.2	5.9	4.6	4.3	4.8	5.0	5.0	5.4	5.6	5.4	5.7	8.9	8.8	9.9
Luxembourg	12.6	13.6	12.9	13.0	13.2	13.5	13.5	13.5	13.5	13.4	13.1	13.8	14.3	14.7	16.8	16.8	15.9	15.6
Malta	10.3	10.8	11.3	12.5	12.0	12.7	11.9	12.3	12.7	13.1	13.2	12.4	13.1	13.1	12.7	13.0	12.9	14.0
Netherlands	9.7	10.6	10.7	11.0	10.7	10.8	11.0	10.5	10.0	9.9	10.5	11.3	11.5	12.7	12.5	13.2	13.2	13.5
Austria	13.4	12.9	12.8	13.2	13.8	12.6	12.7	12.8	13.1	13.4	13.7	14.2	12.8	13.0	13.6	13.7	13.0	14.0
Portugal	8.1	8.0	8.3	9.2	9.3	8.6	8.4	9.4	8.9	11.3	10.9	10.7	10.1	9.9	10.1	9.7	10.1	9.7
Slovenia	8.0	8.6	9.0	9.0	8.8	8.1	8.0	7.8	7.5	7.0	7.2	7.2	7.5	7.5	7.9	7.8	7.8	7.9
Slovakia	6.3	6.1	6.2	6.3	6.6	5.7	5.5	5.6	5.7	6.2	6.7	7.1	7.2	7.2	7.3	7.3	7.3	7.4
Finland	17.0	16.9	16.8	17.0	16.8	15.4	15.4	15.8	15.5	16.1	16.3	16.5	16.4	16.4	16.0	16.0	16.0	16.6
<i>Euro area</i>	11.3	11.5	12.1	12.5	12.3	11.5	11.5	11.7	12.3	12.5	12.5	12.5	12.6	12.8	12.9	12.9	12.9	13.3
<i>Euro area excluding Italy</i> ..	10.9	11.3	11.7	12.0	11.8	11.0	10.9	11.3	11.8	12.1	12.1	12.1	12.2	12.5	12.7	12.7	12.6	13.0
Bulgaria	5.6	5.1	5.5	6.2	5.7	4.9	4.6	4.6	4.6	5.0	5.2	5.4	5.6	5.9	5.8	5.8	5.9	6.4
Czech Republic	8.8	8.8	8.8	9.0	8.2	7.5	7.2	7.4	7.4	7.6	7.7	7.7	8.0	8.1	8.5	8.5	8.5	6.8
Denmark	29.0	30.3	28.8	28.6	27.9	28.3	28.5	28.4	29.2	30.2	33.2	30.6	29.6	29.8	28.4	31.0	30.9	31.2
Croatia	6.1	6.3	6.9	7.4	7.2	7.3	6.5	6.3	6.2	6.6	6.2	6.1	6.4	6.2	6.3	6.5	6.5	5.4
Hungary	8.8	8.7	9.1	10.0	10.2	9.6	7.7	6.2	6.7	6.5	6.7	6.8	7.2	7.1	6.6	6.6	6.7	5.6
Poland	6.3	6.8	7.3	8.3	8.4	7.2	6.7	6.7	7.0	6.8	6.8	6.9	7.1	7.3	7.8	7.9	7.9	8.4
Romania	6.5	5.4	6.0	6.6	6.4	5.9	5.8	6.1	5.8	5.9	6.2	6.6	6.4	6.1	4.9	4.9	4.7	5.1
Sweden	19.8	21.0	21.2	20.2	18.8	18.4	18.1	17.5	17.4	17.7	17.8	18.3	18.9	19.0	18.6	18.1	18.4	18.4
<i>EU excluding euro area</i> ..	15.4	15.5	15.3	14.9	13.9	13.6	13.3	13.1	13.3	13.6	14.1	13.8	13.9	13.8	13.2	13.4	13.5	13.4
<i>EU</i>	11.7	12.0	12.5	12.8	12.5	11.8	11.7	11.9	12.4	12.7	12.7	12.7	12.7	12.9	13.0	13.0	13.0	13.3
<i>EU excluding Italy</i>	11.5	11.9	12.2	12.5	12.2	11.3	11.3	11.6	12.0	12.3	12.4	12.4	12.5	12.7	12.8	12.8	12.7	13.1
United States	10.9	12.3	13.0	13.1	12.0	9.4	10.1	11.2	11.4	12.2	12.5	12.9	12.6	12.2	11.6	11.8	11.9
Japan	8.9	9.6	10.2	9.6	8.3	8.1	8.5	8.8	9.5	9.9	9.8	9.5	9.9	10.3	10.1	10.4
United Kingdom	14.4	15.1	15.3	15.4	15.1	14.6	14.6	14.5	13.8	13.6	13.4	13.4	13.7	13.9	13.9	13.7	14.1	15.1
Canada	16.2	16.4	16.9	17.0	16.3	16.2	15.2	15.3	15.5	15.5	15.7	16.5	16.7	16.6	17.1	16.9	17.9	17.2

Indirect taxes*(as a percentage of GDP)*

	2004	2005	2006	2007	2008	2009	2010	2011	2012	2013	2014	2015	2016	2017	2018	2019	2020	2021
Italy	13.7	13.9	14.5	14.3	13.5	13.4	13.8	14.0	15.1	14.8	15.2	14.9	14.3	14.3	14.4	14.3	13.7	14.5
Belgium	13.0	13.0	13.0	12.9	12.9	13.0	13.2	13.3	13.7	13.6	13.5	13.2	13.5	13.4	13.5	13.4	13.2	13.4
Germany	10.4	10.4	10.3	10.8	10.8	11.3	10.9	11.0	11.0	10.9	10.7	10.8	10.7	10.6	10.6	10.6	10.3	11.0
Estonia	12.7	12.6	13.3	13.2	12.0	14.5	13.7	13.4	13.8	13.4	13.7	14.2	14.6	14.1	13.9	14.2	13.6	13.7
Ireland	12.6	13.1	13.6	13.1	12.0	10.8	10.8	10.4	10.5	10.8	10.9	8.6	8.7	8.3	7.9	7.7	6.3	6.8
Greece	11.6	11.9	12.2	12.6	12.6	11.7	12.7	13.8	14.1	14.4	15.8	16.2	17.3	17.3	17.4	17.3	16.4	16.6
Spain	11.7	12.1	12.2	11.4	9.4	8.1	9.9	9.6	10.2	11.1	11.5	11.7	11.6	11.6	11.7	11.5	11.3	12.1
France	15.1	15.3	15.1	14.9	14.7	14.9	14.7	15.1	15.3	15.5	15.7	15.8	15.9	16.2	16.4	16.7	16.9	16.7
Cyprus	14.9	15.0	15.6	17.0	16.3	14.1	14.2	13.6	13.9	13.7	14.9	14.7	14.6	14.7	14.9	14.5	13.3	14.4
Latvia	11.6	12.3	12.5	12.0	10.8	11.1	12.2	12.5	12.6	13.0	13.3	13.5	14.0	13.9	14.3	14.0	14.2	13.5
Lithuania	11.2	11.2	11.3	11.6	11.6	11.6	11.8	11.6	11.1	11.0	11.2	11.6	11.7	11.6	11.5	11.5	11.6	12.2
Luxembourg	13.1	13.3	12.5	12.9	11.8	11.9	11.7	12.0	12.2	12.2	12.7	10.7	10.8	11.1	11.4	11.3	10.9	11.6
Malta	13.2	14.1	14.2	14.0	13.6	13.1	13.2	13.3	12.8	12.4	12.7	11.8	11.9	11.7	12.1	11.5	10.7	10.8
Netherlands	11.6	11.7	11.8	11.5	11.3	11.1	11.0	10.8	10.6	10.9	11.3	11.1	11.5	11.5	11.7	12.0	12.3	12.2
Austria	14.6	14.3	13.9	13.7	13.9	14.3	14.3	14.3	14.6	14.5	14.3	14.3	14.3	14.1	13.8	13.9	13.7	13.9
Portugal	13.8	14.6	14.8	14.4	14.0	12.5	13.2	13.8	13.8	13.7	14.2	14.6	14.7	14.9	15.1	15.0	14.6	15.3
Slovenia	15.4	15.4	14.9	14.5	13.9	13.5	14.0	14.0	14.4	14.9	14.8	14.7	14.6	14.2	14.0	13.7	12.7	13.2
Slovakia	12.3	12.6	11.3	11.1	10.5	10.5	10.3	11.1	10.6	11.2	11.5	11.6	11.5	11.9	11.8	12.0	12.1	12.4
Finland	13.2	13.3	13.2	12.6	12.4	12.9	12.9	13.7	14.0	14.3	14.3	14.0	14.3	13.9	14.1	14.0	13.9	13.8
<i>Euro area</i>	12.6	12.8	12.9	12.8	12.3	12.2	12.4	12.6	12.9	13.0	13.1	13.0	13.0	13.0	13.0	13.0	12.7	13.2
<i>Euro area excluding Italy</i>	12.4	12.6	12.5	12.5	12.1	12.0	12.1	12.3	12.4	12.6	12.7	12.7	12.7	12.7	12.8	12.8	12.6	12.9
Bulgaria	15.7	16.1	16.6	15.9	16.7	14.1	13.8	13.8	14.3	15.3	14.9	15.3	15.4	15.3	14.7	15.3	15.1	16.1
Czech Republic	10.8	10.7	10.2	10.5	10.3	10.7	11.1	11.8	12.3	12.6	11.8	12.1	12.2	12.3	12.0	11.9	11.4	11.5
Denmark	17.1	17.4	17.3	17.5	16.5	16.3	16.2	16.3	16.3	16.4	16.2	16.3	16.2	15.9	16.0	15.7	16.0	15.8
Croatia	18.3	18.1	18.1	17.7	17.8	16.9	17.4	16.9	17.9	18.3	18.3	18.8	19.0	19.2	19.6	19.7	18.7	19.3
Hungary	15.9	15.3	14.9	15.6	15.5	16.3	17.2	17.2	18.5	18.5	18.4	18.6	18.0	17.8	18.0	17.9	18.1	17.5
Poland	13.5	13.8	14.1	14.4	14.5	13.0	13.7	13.8	13.0	12.9	12.9	12.9	13.4	13.8	14.0	13.8	13.9	15.2
Romania	11.9	13.0	12.9	12.1	11.2	10.2	11.9	13.1	13.2	12.7	12.7	13.3	11.3	10.3	10.4	10.6	10.4	10.7
Sweden	22.2	22.4	21.9	21.9	22.3	22.4	22.0	21.6	21.9	21.8	21.5	21.5	22.4	22.3	22.3	21.9	21.7	21.9
<i>EU excluding euro area</i>	16.9	16.9	16.6	16.5	16.2	15.7	16.2	16.4	16.5	16.5	16.2	16.3	16.5	16.3	16.2	15.9	15.9	16.3
<i>EU</i>	13.1	13.3	13.3	13.3	12.8	12.7	12.9	13.1	13.4	13.5	13.5	13.5	13.4	13.4	13.5	13.5	13.2	13.6
<i>EU excluding Italy</i>	13.0	13.2	13.1	13.1	12.7	12.6	12.8	12.9	13.1	13.2	13.3	13.3	13.3	13.3	13.3	13.3	13.1	13.5
United States	7.1	7.2	7.2	7.2	7.1	7.1	7.1	7.1	7.0	7.1	7.1	7.0	7.0	7.0	7.1	7.2	7.3
Japan	7.1	7.1	6.9	7.0	7.2	7.1	7.3	7.2	7.2	7.9	8.3	8.3	8.2	8.3	8.3	8.9
United Kingdom	12.0	11.6	11.6	11.7	11.2	10.8	12.0	12.6	12.6	12.6	12.7	12.7	12.7	12.8	12.8	12.7	11.7	12.2
Canada	12.3	12.1	11.8	11.6	11.0	11.8	11.8	11.5	11.6	11.5	11.5	12.1	12.3	12.4	12.3	12.2	12.2	12.0

Social security contributions

(as a percentage of GDP)

	2004	2005	2006	2007	2008	2009	2010	2011	2012	2013	2014	2015	2016	2017	2018	2019	2020	2021
Italy	12.2	12.2	11.9	12.6	13.0	13.4	13.3	13.1	13.3	13.4	13.2	13.2	13.0	13.0	13.2	13.5	13.9	13.8
Belgium	15.7	15.4	15.4	15.5	16.0	16.6	16.2	16.5	16.7	16.8	16.6	16.4	15.8	15.7	15.5	15.4	16.0	15.1
Germany	17.8	17.5	17.0	16.2	16.2	17.0	16.6	16.4	16.6	16.6	16.5	16.6	16.7	16.8	17.0	17.2	18.1	17.7
Estonia	10.4	10.2	10.1	10.4	11.5	13.1	13.0	11.8	11.4	11.2	11.1	11.4	11.5	11.7	11.8	12.0	12.7	12.2
Ireland	5.2	5.1	5.2	5.4	5.9	6.1	5.7	6.4	6.1	6.0	5.9	4.6	4.8	4.6	4.5	4.4	4.0	3.8
Greece	12.1	12.3	11.9	12.4	12.7	12.4	13.3	13.4	14.1	13.6	13.6	13.8	14.3	14.7	14.6	14.5	15.4	14.9
Spain	12.6	12.6	12.6	12.6	12.7	12.9	12.8	12.7	12.6	12.4	12.5	12.2	12.2	12.3	12.4	12.9	14.5	14.3
France	17.6	17.7	17.8	17.6	17.6	18.3	18.1	18.3	18.5	18.8	19.0	18.8	18.7	18.7	18.0	16.7	17.0	16.8
Cyprus	7.0	7.5	7.1	6.8	7.0	7.8	8.0	7.9	7.8	7.6	8.3	8.3	8.2	8.4	8.5	10.3	11.2	11.6
Latvia	8.4	8.1	8.2	8.0	8.3	9.5	8.8	9.1	8.9	8.8	8.7	8.6	8.5	8.7	9.5	10.0	10.4	10.0
Lithuania	9.4	9.2	9.4	9.4	9.9	13.1	12.1	11.4	11.2	11.1	11.4	11.9	12.5	12.5	13.0	10.0	10.7	10.7
Luxembourg	11.8	11.8	11.1	11.0	11.1	12.2	11.6	11.8	11.9	11.8	11.5	11.6	11.5	11.9	12.1	12.3	12.6	11.7
Malta	7.4	7.4	7.2	6.9	7.0	6.9	6.7	7.0	6.8	6.6	6.4	6.0	6.1	5.9	5.9	5.7	6.4	6.3
Netherlands	13.8	12.9	13.5	13.0	13.8	13.2	13.5	14.2	15.1	15.3	15.2	14.5	15.2	14.3	14.4	13.9	14.1	13.6
Austria	15.2	14.9	14.7	14.4	14.5	14.9	14.8	14.8	14.8	15.2	15.2	15.1	15.1	15.2	15.2	15.4	16.1	15.9
Portugal	11.4	11.6	11.6	11.3	11.6	12.1	11.9	12.0	11.4	12.0	11.8	11.6	11.6	11.6	11.6	11.8	12.8	12.8
Slovenia	15.2	15.4	15.0	14.6	14.9	15.8	16.1	15.9	16.2	15.8	15.6	15.7	15.7	15.7	15.7	16.0	17.2	16.8
Slovakia	13.1	12.6	11.7	11.6	11.8	12.5	12.2	12.2	12.4	13.5	13.7	13.9	14.4	14.8	14.9	15.2	15.7	16.1
Finland	11.3	11.6	11.9	11.6	11.6	12.3	12.2	12.1	12.7	12.7	12.7	12.7	12.8	12.1	12.0	11.9	11.6	12.1
<i>Euro area</i>	15.0	14.9	14.7	14.5	14.7	15.2	15.1	15.1	15.3	15.5	15.4	15.2	15.3	15.2	15.2	15.0	15.6	15.3
<i>Euro area excluding Italy</i>	15.7	15.5	15.3	14.9	15.1	15.6	15.5	15.5	15.8	15.9	15.9	15.6	15.7	15.6	15.5	15.3	15.9	15.6
Bulgaria	9.9	9.4	8.0	7.7	7.4	7.2	6.6	6.7	6.8	7.4	7.8	7.8	7.7	8.2	8.7	8.8	9.2	9.3
Czech Republic	14.7	14.7	14.9	14.9	14.8	14.2	14.5	14.6	14.7	14.6	14.5	14.3	14.7	14.9	15.4	15.5	16.0	16.6
Denmark	1.6	1.5	1.4	1.4	1.3	1.4	1.3	1.3	1.2	1.1	1.0	1.0	0.9	0.9	0.8	0.8	0.8	0.8
Croatia	11.6	11.5	11.5	11.8	11.8	12.1	11.9	11.8	11.5	11.3	11.8	11.8	11.7	11.7	11.5	11.3	11.7	11.3
Hungary	12.1	12.3	12.3	13.5	13.5	12.9	11.8	12.9	13.7	13.4	13.2	13.2	13.7	12.8	12.1	11.7	11.2	10.5
Poland	13.2	13.3	13.1	12.8	12.2	12.1	11.8	12.2	13.1	13.4	13.3	13.5	13.8	13.9	14.1	14.2	14.5	14.0
Romania	9.8	10.3	10.4	10.3	9.6	9.7	9.4	9.1	8.8	8.6	8.5	8.1	8.8	9.4	11.4	11.3	11.9	11.4
Sweden	3.8	3.5	3.1	3.1	3.2	3.3	3.1	3.3	3.3	3.4	3.3	3.3	3.3	3.3	3.4	3.4	3.4	3.4
<i>EU excluding euro area</i>	7.7	8.0	7.9	8.1	8.2	8.0	7.8	7.9	8.1	8.1	8.0	8.1	8.2	8.4	8.9	9.0	9.1	8.9
<i>EU</i>	14.2	14.1	13.9	13.7	13.9	14.3	14.1	14.2	14.4	14.4	14.4	14.2	14.3	14.3	14.3	14.1	14.6	14.3
<i>EU excluding Italy</i>	14.6	14.4	14.3	13.9	14.0	14.5	14.3	14.3	14.5	14.6	14.6	14.4	14.5	14.4	14.4	14.2	14.7	14.4
United States	6.8	6.7	6.7	6.7	6.7	6.7	6.6	5.9	5.9	6.6	6.6	6.6	6.7	6.7	6.7	6.7	7.0
Japan	10.0	10.3	10.5	10.9	11.2	11.3	11.8	12.2	12.3	12.4	12.4	12.6	12.8	13.1	13.3	13.7
United Kingdom	7.4	7.5	7.5	7.4	7.6	7.7	7.6	7.6	7.5	7.4	7.3	7.4	7.5	7.7	7.7	8.0	8.7	8.6
Canada	4.7	4.6	4.6	4.6	4.5	4.8	4.5	4.5	4.6	4.7	4.6	4.8	4.8	4.6	4.6	4.6	4.8	4.7

Total expenditure*(as a percentage of GDP)*

	2004	2005	2006	2007	2008	2009	2010	2011	2012	2013	2014	2015	2016	2017	2018	2019	2020	2021
Italy	46.9	47.2	47.8	46.8	47.8	51.1	49.9	49.2	50.6	51.0	50.9	50.3	49.1	48.8	48.4	48.5	57.0	55.5
Belgium	49.3	51.9	48.8	48.6	50.8	54.7	53.9	55.3	56.5	56.1	55.6	53.7	53.1	52.0	52.3	51.9	59.2	54.8
Germany	46.8	46.8	45.2	43.4	44.2	48.2	48.1	45.2	44.9	44.9	44.3	44.1	44.4	44.2	44.3	45.0	50.8	51.5
Estonia	34.1	33.7	33.4	33.7	39.5	45.9	40.3	37.4	39.2	38.4	37.8	39.5	39.4	39.2	39.4	39.4	45.9	42.3
Ireland	32.8	33.0	33.6	35.6	41.6	46.9	64.9	47.3	42.5	40.6	37.6	29.1	28.1	26.2	25.3	24.2	27.3	24.9
Greece	47.6	45.6	45.1	47.1	50.8	54.1	53.0	55.1	56.7	62.8	50.7	54.1	49.9	48.5	48.5	47.9	59.9	56.9
Spain	38.8	38.5	38.4	39.3	41.4	46.2	46.0	46.2	49.5	46.4	45.3	44.1	42.5	41.3	41.8	42.3	51.8	50.6
France	53.0	53.3	52.9	52.6	53.3	57.2	56.9	56.3	57.1	57.2	57.2	56.8	56.7	56.5	55.6	55.4	61.4	59.2
Cyprus	38.5	39.3	38.7	37.6	38.4	42.1	41.8	42.2	42.2	43.0	49.4	40.6	37.5	36.5	42.7	38.4	45.1	44.1
Latvia	35.1	34.8	36.5	34.5	38.3	45.1	45.8	42.3	38.8	38.5	38.9	38.6	37.5	38.7	39.4	38.2	43.3	44.9
Lithuania	34.1	34.1	34.3	35.3	38.1	45.0	42.4	42.5	36.2	35.6	34.7	35.2	34.2	33.2	34.0	34.8	42.9	38.7
Luxembourg	43.7	43.4	39.4	37.4	37.9	42.7	42.0	41.5	41.8	41.2	40.6	40.4	40.0	41.3	42.1	42.9	47.2	42.3
Malta	41.9	42.4	42.2	40.9	42.2	41.2	40.2	42.0	42.1	40.8	40.3	38.5	36.4	34.4	35.8	36.1	46.3	45.5
Netherlands	43.4	42.3	43.1	42.5	43.2	47.7	47.9	46.8	46.9	46.6	45.9	44.7	43.6	42.4	42.2	42.0	47.6	46.3
Austria	53.7	51.2	50.4	49.2	49.9	54.1	52.8	50.9	51.2	51.6	52.4	51.1	50.1	49.3	48.7	48.6	57.0	55.9
Portugal	46.2	46.8	45.2	44.5	45.3	50.2	51.9	50.0	48.9	49.9	51.7	48.2	44.8	45.4	43.2	42.5	49.3	48.1
Slovenia	46.6	46.4	45.5	43.4	45.1	49.4	50.2	50.9	49.4	60.3	50.8	48.7	46.2	44.1	43.5	43.3	51.3	49.1
Slovakia	37.9	39.7	38.8	36.4	37.0	44.4	42.3	41.5	41.3	42.6	43.4	45.7	42.7	39.6	39.8	40.7	45.3	46.8
Finland	49.1	49.0	48.1	46.6	47.9	54.1	53.9	53.7	55.4	56.8	57.3	56.5	55.6	53.6	53.3	53.3	57.1	54.9
<i>Euro area</i>	47.0	47.0	46.3	45.6	46.8	50.9	50.9	49.4	50.1	50.0	49.3	48.4	47.7	47.1	46.9	46.9	53.6	52.4
<i>Euro area excluding Italy</i> ..	47.0	46.9	46.0	45.3	46.6	50.9	51.1	49.5	50.0	49.8	49.0	48.1	47.5	46.8	46.6	46.7	53.0	51.9
Bulgaria	37.8	36.7	33.7	37.7	37.1	39.3	36.1	33.7	34.3	37.8	43.2	40.4	34.8	35.4	37.0	36.3	42.0	43.1
Czech Republic	42.3	42.4	41.5	40.4	40.9	44.4	43.6	43.2	44.7	42.7	42.6	41.9	39.8	39.0	40.6	41.1	47.3	46.4
Denmark	53.0	51.2	49.8	49.6	50.4	56.5	56.7	56.4	58.0	55.8	55.2	54.5	52.5	50.5	50.5	49.5	53.4	51.0
Croatia	48.6	46.5	46.2	45.8	45.9	48.9	48.5	48.9	48.4	48.3	48.7	48.2	46.9	44.7	45.5	46.1	54.5	49.2
Hungary	48.7	49.3	51.3	49.8	48.7	50.5	48.8	49.0	49.1	50.0	50.0	50.4	46.8	46.7	46.1	46.0	51.2	47.9
Poland	43.5	44.2	44.5	42.9	44.2	45.0	45.8	44.1	43.1	43.0	42.6	41.7	41.1	41.3	41.5	41.8	48.2	44.2
Romania	33.8	33.5	35.6	37.5	37.6	39.4	40.0	39.6	37.6	35.6	35.4	36.1	34.6	33.5	34.8	36.2	42.0	39.9
Sweden	52.5	52.3	51.1	49.3	50.0	52.4	50.4	49.8	51.0	51.6	50.7	49.3	49.7	49.2	49.8	49.1	52.6	50.2
<i>EU excluding euro area</i> ..	47.9	47.2	46.6	45.5	45.8	48.6	48.1	47.3	47.7	47.3	46.9	46.0	44.9	44.1	44.5	44.2	49.5	46.8
<i>EU</i>	47.1	47.0	46.4	45.6	46.7	50.6	50.5	49.1	49.8	49.6	49.0	48.1	47.3	46.7	46.5	46.5	53.0	51.6
<i>EU excluding Italy</i>	47.1	46.9	46.1	45.3	46.5	50.5	50.6	49.1	49.6	49.4	48.7	47.8	47.1	46.4	46.3	46.3	52.4	51.0
United States	36.9	36.9	36.7	37.4	39.7	43.2	43.0	41.9	40.1	38.9	38.3	38.0	38.3	38.1	37.9	38.2	47.8
Japan	35.0	34.5	34.6	35.6	40.3	39.3	40.2	40.2	40.4	40.0	38.8	38.7	38.2	38.3	38.7	46.1
United Kingdom	39.9	41.1	40.6	40.8	44.1	46.9	47.1	45.5	45.4	43.6	42.8	41.9	41.1	40.7	40.4	40.3	51.3	47.5
Canada	40.0	39.4	39.5	39.3	39.6	44.3	43.9	42.4	41.7	40.8	39.2	40.8	41.6	41.3	41.5	41.4	53.9	46.8

Total expenditure, excluding interest payments*(as a percentage of GDP)*

	2004	2005	2006	2007	2008	2009	2010	2011	2012	2013	2014	2015	2016	2017	2018	2019	2020	2021
Italy	42.3	42.7	43.4	42.0	42.9	46.7	45.7	44.5	45.4	46.1	46.3	46.2	45.2	45.0	44.7	45.1	53.5	52.0
Belgium	44.5	47.5	44.6	44.5	46.7	50.8	50.3	51.8	53.0	52.8	52.4	50.8	50.4	49.7	50.1	49.9	57.3	53.1
Germany	44.0	44.1	42.5	40.7	41.5	45.6	45.7	42.7	42.6	43.1	42.7	42.7	43.2	43.1	43.4	44.2	50.2	50.9
Estonia	33.8	33.5	33.3	33.6	39.2	45.7	40.2	37.3	39.1	38.4	37.7	39.5	39.4	39.2	39.4	39.4	45.8	42.3
Ireland	31.7	32.0	32.6	34.6	40.3	44.9	62.1	43.9	38.4	36.3	33.7	26.4	25.7	24.2	23.7	22.9	26.3	24.1
Greece	42.8	40.9	40.7	42.6	46.0	49.0	46.9	47.4	51.4	58.7	46.7	50.5	46.7	45.4	45.1	44.9	56.9	54.4
Spain	36.8	36.7	36.8	37.7	39.9	44.5	44.1	43.7	46.4	42.8	41.8	41.0	39.7	38.8	39.4	40.0	49.5	48.4
France	50.2	50.6	50.3	49.9	50.4	54.6	54.4	53.6	54.5	54.9	55.1	54.8	54.8	54.8	53.9	53.9	60.1	57.8
Cyprus	35.6	36.1	35.7	34.8	35.8	39.8	39.8	40.1	38.9	39.7	46.1	37.5	34.8	34.1	40.4	36.2	42.9	42.2
Latvia	34.3	34.2	36.0	34.2	37.7	43.5	44.0	40.5	37.1	37.0	37.6	37.4	36.5	37.7	38.7	37.5	42.6	44.4
Lithuania	33.2	33.3	33.6	34.6	37.5	43.7	40.6	40.7	34.2	33.8	33.2	33.6	32.9	32.1	33.1	33.9	42.3	38.3
Luxembourg	43.5	43.2	39.2	37.1	37.6	42.3	41.6	41.0	41.3	40.7	40.2	40.0	39.7	40.9	41.8	42.5	46.9	42.1
Malta	38.2	38.6	38.5	37.5	38.9	37.9	37.2	38.8	39.2	38.0	37.6	36.2	34.3	32.6	34.3	34.8	45.0	44.4
Netherlands	41.1	40.1	41.1	40.5	41.2	45.6	46.2	45.0	45.2	45.0	44.4	43.4	42.4	41.4	41.3	41.2	47.0	45.8
Austria	50.7	47.9	47.2	46.1	46.9	51.0	49.9	48.1	48.5	49.0	50.0	48.8	48.0	47.5	47.1	47.2	55.7	54.8
Portugal	43.7	44.2	42.5	41.5	42.2	47.2	49.0	45.7	44.0	45.1	46.9	43.7	40.7	41.6	39.9	39.5	46.4	45.7
Slovenia	45.0	44.9	44.2	42.2	44.0	48.1	48.5	49.0	47.3	57.7	47.6	45.5	43.1	41.5	41.5	41.6	49.7	47.8
Slovakia	35.7	38.0	37.4	35.0	35.7	43.0	41.0	40.0	39.5	40.7	41.5	43.9	41.0	38.2	38.5	39.4	44.1	45.7
Finland	47.4	47.4	46.6	45.2	46.5	52.8	52.6	52.3	54.0	55.5	56.0	55.3	54.6	52.6	52.4	52.5	56.4	54.5
<i>Euro area</i>	44.0	44.0	43.5	42.7	43.9	48.1	48.1	46.4	47.0	47.2	46.7	46.1	45.6	45.2	45.1	45.3	52.1	51.0
<i>Euro area excluding Italy</i> ..	44.3	44.3	43.5	42.8	44.1	48.4	48.6	46.8	47.4	47.4	46.8	46.1	45.7	45.2	45.1	45.3	51.9	50.8
Bulgaria	36.0	35.2	32.4	36.6	36.2	38.5	35.4	33.0	33.5	37.0	42.3	39.5	33.9	34.6	36.3	35.7	41.5	42.6
Czech Republic	41.2	41.3	40.4	39.4	39.9	43.1	42.3	41.9	43.3	41.3	41.3	40.9	38.8	38.2	39.9	40.4	46.6	45.7
Denmark	50.5	49.2	48.0	48.0	49.0	54.6	54.8	54.5	56.1	54.2	53.7	53.0	51.1	49.8	49.7	48.8	52.9	50.5
Croatia	46.8	44.7	44.6	44.1	44.1	46.7	46.1	46.3	45.3	45.2	45.3	44.8	43.8	42.1	43.2	43.9	52.6	47.7
Hungary	44.4	45.3	47.5	45.8	44.7	46.0	44.7	44.9	44.6	45.5	46.1	46.9	43.7	44.1	43.8	43.7	48.9	45.6
Poland	40.7	41.8	42.1	40.7	42.1	42.6	43.4	41.5	40.5	40.4	40.7	39.9	39.4	39.7	40.1	40.4	46.9	43.1
Romania	32.3	32.3	34.8	36.8	37.0	37.9	38.5	37.9	35.7	33.7	33.6	34.5	33.1	32.2	33.8	35.1	40.6	38.6
Sweden	50.6	50.5	49.3	47.6	48.4	51.1	49.3	48.5	50.0	50.8	50.0	48.8	49.2	48.8	49.4	48.7	52.3	50.0
<i>EU excluding euro area</i> ..	45.6	45.2	44.7	43.7	44.1	46.6	46.2	45.4	45.8	45.4	45.3	44.6	43.5	43.0	43.4	43.2	48.5	45.9
<i>EU</i>	44.1	44.2	43.6	42.8	43.9	47.9	47.8	46.3	46.9	47.0	46.5	45.9	45.3	44.9	44.8	45.0	51.6	50.2
<i>EU excluding Italy</i>	44.5	44.4	43.7	43.0	44.1	48.1	48.2	46.6	47.1	47.1	46.6	45.9	45.4	44.9	44.8	45.0	51.3	50.0
United States	33.0	33.0	32.7	33.3	35.7	39.0	38.8	37.5	35.8	34.9	34.4	34.2	34.4	34.2	34.0	34.1	43.9
Japan	33.3	32.8	32.7	33.7	38.3	37.5	38.3	38.3	38.4	38.1	37.1	37.0	36.6	36.7	37.3	44.6
United Kingdom	38.1	39.2	38.7	38.7	42.0	45.1	44.3	42.4	42.6	40.8	40.2	39.7	38.7	38.1	38.0	38.2	49.4	44.9
Canada	35.2	34.9	35.3	35.4	35.9	40.6	40.3	38.8	38.3	37.5	36.1	37.8	38.6	38.4	38.5	38.5	50.9	44.1

Current expenditure*(as a percentage of GDP)*

	2004	2005	2006	2007	2008	2009	2010	2011	2012	2013	2014	2015	2016	2017	2018	2019	2020	2021
Italy	42.4	42.6	42.2	42.3	43.5	46.0	45.7	45.3	46.7	47.4	47.3	46.2	45.8	44.9	45.1	45.0	51.7	49.5
Belgium	46.3	46.2	45.8	45.3	47.3	50.8	50.0	50.6	51.3	51.7	51.5	50.1	49.8	48.8	48.8	48.5	55.6	51.0
Germany	43.3	43.3	41.8	40.2	40.5	44.4	43.3	41.7	41.6	41.7	41.1	41.0	41.0	40.7	40.7	41.4	46.8	47.0
Estonia	29.7	28.9	28.0	27.3	32.1	38.3	35.9	32.9	32.1	32.2	31.9	33.6	34.1	33.0	33.6	34.1	39.1	36.1
Ireland	28.4	28.7	29.1	30.0	34.5	39.6	39.4	40.0	39.6	38.0	34.8	26.0	25.5	23.8	22.7	21.5	24.5	22.5
Greece	39.6	40.2	39.9	41.4	43.6	47.5	47.9	51.0	49.6	45.8	46.0	45.8	46.0	44.9	44.3	43.9	51.3	49.4
Spain	33.0	32.9	32.8	33.3	35.4	39.7	40.2	41.0	41.5	42.5	42.1	40.6	39.7	38.6	38.7	39.3	47.8	45.7
France	48.1	48.2	47.9	47.5	48.1	51.5	51.5	51.1	51.7	52.0	52.3	52.1	52.0	51.4	51.1	50.6	56.3	53.9
Cyprus	34.1	35.2	34.5	33.6	34.3	36.7	36.1	37.3	38.6	38.2	37.2	36.4	34.2	33.2	32.6	34.0	41.5	40.7
Latvia	30.3	30.3	30.0	27.9	32.9	39.2	38.9	35.0	33.3	33.4	34.2	33.6	33.7	33.4	33.2	33.2	36.5	37.9
Lithuania	30.0	30.2	29.7	29.0	32.3	40.1	37.0	33.6	32.1	30.8	30.0	30.7	30.6	29.5	30.4	31.3	37.9	35.0
Luxembourg	37.2	36.8	34.2	32.5	33.2	37.2	36.1	36.2	36.8	36.8	36.1	35.8	35.2	36.3	37.0	37.7	41.0	36.9
Malta	38.1	37.5	37.6	37.0	39.2	38.1	36.8	37.7	37.8	36.8	35.7	33.2	32.9	31.1	31.3	31.4	40.5	40.1
Netherlands	39.3	38.5	39.1	38.6	39.0	42.4	42.9	42.5	42.6	42.5	42.2	41.0	39.9	39.1	38.8	38.6	43.9	42.6
Austria	46.3	46.9	46.1	44.8	45.4	48.5	48.3	46.7	46.8	47.2	47.0	46.9	46.3	45.3	45.0	44.8	52.8	51.7
Portugal	40.6	41.7	41.2	40.8	41.5	45.4	44.7	45.7	45.3	46.7	45.6	44.0	42.8	41.0	40.2	39.6	45.0	44.4
Slovenia	41.5	41.8	40.6	38.0	39.2	43.5	44.7	45.1	44.7	44.7	43.4	42.7	42.5	40.4	39.3	39.0	46.6	43.9
Slovakia	34.4	34.7	34.3	32.6	32.8	38.6	37.8	37.0	37.4	38.6	38.8	38.5	38.6	36.0	35.7	36.6	41.0	43.3
Finland	45.0	45.1	44.5	42.8	44.0	49.7	49.9	49.4	51.0	52.3	52.7	52.5	51.2	49.4	48.9	48.7	52.0	50.3
<i>Euro area</i>	42.5	42.4	41.8	41.2	42.2	45.8	45.5	45.0	45.5	45.7	45.4	44.5	44.2	43.3	43.2	43.2	49.1	47.7
<i>Euro area excluding Italy</i>	42.5	42.4	41.7	41.0	41.9	45.8	45.5	45.0	45.2	45.4	45.0	44.2	43.9	43.0	42.8	42.8	48.7	47.3
Bulgaria	34.0	32.7	29.6	29.6	31.4	34.1	31.2	30.0	30.2	33.2	34.1	33.2	30.7	32.0	32.9	31.8	36.9	39.0
Czech Republic	34.9	34.6	34.5	34.2	34.3	37.5	37.6	37.6	37.6	38.0	37.2	36.0	35.8	35.0	35.7	36.0	41.2	40.9
Denmark	50.1	48.6	47.0	46.5	46.8	53.1	53.0	52.3	52.5	52.0	50.8	50.2	48.5	47.0	46.7	46.2	49.3	47.3
Croatia	39.4	39.1	39.0	38.1	38.2	41.4	42.1	42.4	42.8	42.9	43.0	43.2	41.8	40.7	40.1	39.7	46.7	42.8
Hungary	43.5	43.8	44.4	43.7	44.1	45.7	43.9	43.1	43.9	44.3	42.7	41.1	41.2	40.0	38.5	37.8	40.1	38.4
Poland	40.2	40.0	39.8	38.1	38.7	39.1	39.5	37.5	37.8	38.4	37.5	36.7	37.3	36.6	36.4	37.1	42.5	39.0
Romania	28.4	29.2	28.7	29.8	30.1	33.3	33.4	31.7	31.2	30.0	29.8	29.7	29.3	29.9	30.7	31.6	36.0	34.4
Sweden	48.3	48.0	46.9	45.1	45.7	47.9	45.9	45.1	46.3	47.0	46.1	44.8	45.1	44.5	44.7	44.0	47.2	45.1
<i>EU excluding euro area</i>	43.6	42.7	41.8	40.4	40.6	43.3	42.9	41.8	42.3	42.6	41.7	40.7	40.5	39.7	39.5	39.3	43.6	41.5
<i>EU</i>	42.6	42.5	41.8	41.1	42.0	45.5	45.2	44.6	45.0	45.3	44.9	44.0	43.7	42.8	42.7	42.6	48.3	46.7
<i>EU excluding Italy</i>	42.6	42.4	41.7	40.9	41.7	45.5	45.1	44.5	44.7	44.9	44.5	43.6	43.3	42.5	42.3	42.3	47.8	46.3
United States	30.8	30.7	30.6	30.9	32.9	35.5	35.9	35.1	33.8	32.4	32.3	32.2	32.6	32.3	32.4	32.7	42.0
Japan
United Kingdom	36.1	36.6	36.8	36.8	37.7	41.2	42.2	41.1	40.5	38.5	37.9	37.1	36.4	35.7	35.5	35.4	44.9	42.1
Canada

Current expenditure, excluding interest payments

(as a percentage of GDP)

	2004	2005	2006	2007	2008	2009	2010	2011	2012	2013	2014	2015	2016	2017	2018	2019	2020	2021
Italy	37.8	38.1	37.8	37.6	38.6	41.6	41.5	40.6	41.6	42.6	42.7	42.1	41.9	41.1	41.5	41.7	48.2	46.0
Belgium	41.5	41.8	41.6	41.3	43.3	46.9	46.5	47.1	47.9	48.4	48.3	47.3	47.1	46.5	46.7	46.6	53.6	49.4
Germany	40.5	40.5	39.1	37.5	37.9	41.8	40.8	39.2	39.3	39.9	39.5	39.6	39.8	39.6	39.8	40.6	46.1	46.5
Estonia	29.4	28.7	27.8	27.1	31.9	38.1	35.8	32.8	32.0	32.2	31.9	33.6	34.1	33.0	33.6	34.1	39.1	36.1
Ireland	27.3	27.7	28.1	29.0	33.3	37.6	36.6	36.6	35.5	33.7	30.9	23.3	23.2	21.9	21.1	20.2	23.5	21.7
Greece	34.8	35.5	35.5	36.9	38.8	42.5	41.8	43.3	44.2	41.6	42.0	42.2	42.8	41.7	40.9	40.9	48.3	47.0
Spain	31.0	31.2	31.1	31.7	33.8	38.0	38.3	38.5	38.5	38.9	38.5	37.6	37.0	36.1	36.2	37.0	45.5	43.6
France	45.3	45.5	45.3	44.8	45.2	49.0	49.0	48.4	49.1	49.7	50.2	50.1	50.2	49.7	49.4	49.1	55.0	52.5
Cyprus	31.1	32.1	31.6	30.7	31.7	34.4	34.1	35.2	35.2	35.0	33.9	33.3	31.6	30.7	30.2	31.8	39.3	38.8
Latvia	29.6	29.8	29.6	27.5	32.3	37.6	37.1	33.2	31.6	31.9	32.9	32.4	32.7	32.4	32.5	32.5	35.9	37.4
Lithuania	29.1	29.5	29.0	28.3	31.6	38.8	35.2	31.8	30.1	29.0	28.4	29.1	29.3	28.4	29.5	30.4	37.2	34.6
Luxembourg	37.0	36.6	34.0	32.2	32.9	36.8	35.7	35.7	36.3	36.3	35.7	35.4	34.9	35.9	36.7	37.4	40.8	36.7
Malta	34.4	33.7	33.9	33.5	35.9	34.9	33.8	34.6	34.8	33.9	33.0	30.9	30.9	29.4	29.8	30.1	39.1	39.0
Netherlands	37.0	36.3	37.1	36.6	37.0	40.4	41.2	40.7	41.0	40.9	40.7	39.7	38.8	38.1	37.9	37.8	43.2	42.0
Austria	43.3	43.7	43.0	41.6	42.4	45.4	45.4	43.9	44.1	44.6	44.6	44.5	44.3	43.5	43.4	43.4	51.5	50.6
Portugal	38.0	39.2	38.5	37.8	38.4	42.4	41.8	41.3	40.4	41.9	40.7	39.4	38.7	37.2	36.8	36.7	42.1	41.9
Slovenia	39.8	40.3	39.2	36.7	38.1	42.2	43.0	43.2	42.7	42.1	40.1	39.5	39.5	37.8	37.3	37.3	45.0	42.7
Slovakia	32.3	33.0	32.8	31.2	31.4	37.2	36.5	35.5	35.6	36.7	36.8	36.7	36.9	34.5	34.3	35.4	39.8	42.2
Finland	43.3	43.5	43.0	41.4	42.6	48.4	48.6	48.0	49.6	51.1	51.5	51.3	50.2	48.4	48.0	47.9	51.4	49.8
<i>Euro area</i>	39.4	39.5	39.0	38.3	39.2	43.0	42.8	42.0	42.4	42.9	42.8	42.2	42.1	41.4	41.3	41.6	47.6	46.2
<i>Euro area excluding Italy</i>	39.8	39.8	39.2	38.5	39.4	43.3	43.0	42.3	42.6	43.0	42.8	42.2	42.1	41.4	41.3	41.5	47.5	46.2
Bulgaria	32.1	31.1	28.3	28.5	30.6	33.4	30.5	29.3	29.4	32.4	33.3	32.3	29.9	31.2	32.3	31.2	36.4	38.5
Czech Republic	33.9	33.5	33.5	33.1	33.3	36.3	36.3	36.3	36.2	36.7	35.9	34.9	34.9	34.2	35.0	35.3	40.5	40.2
Denmark	47.6	46.6	45.2	44.9	45.4	51.2	51.1	50.3	50.6	50.3	49.4	48.7	47.2	46.3	45.9	45.5	48.8	46.8
Croatia	37.7	37.3	37.4	36.5	36.5	39.2	39.8	39.7	39.8	39.8	39.6	39.8	38.7	38.1	37.9	37.6	44.7	41.3
Hungary	39.1	39.7	40.5	39.6	40.1	41.2	39.8	39.0	39.3	39.8	38.7	37.6	38.1	37.4	36.2	35.5	37.7	36.0
Poland	37.5	37.5	37.4	35.9	36.6	36.6	37.0	35.0	35.2	35.8	35.5	35.0	35.6	35.1	35.0	35.7	41.2	37.9
Romania	27.0	27.9	27.9	29.1	29.5	31.8	31.9	30.0	29.3	28.0	28.1	28.0	27.8	28.6	29.7	30.5	34.6	33.0
Sweden	46.4	46.1	45.1	43.4	44.1	46.6	44.8	43.9	45.2	46.1	45.4	44.3	44.6	44.1	44.3	43.6	46.9	44.9
<i>EU excluding euro area</i>	41.3	40.6	39.9	38.7	38.9	41.4	41.0	39.8	40.3	40.7	40.1	39.3	39.2	38.6	38.5	38.3	42.6	40.6
<i>EU</i>	39.6	39.6	39.1	38.4	39.2	42.8	42.5	41.7	42.1	42.6	42.4	41.8	41.7	41.0	40.9	41.1	46.8	45.4
<i>EU excluding Italy</i>	40.0	39.9	39.3	38.5	39.3	43.0	42.7	41.9	42.2	42.6	42.4	41.7	41.6	41.0	40.9	41.0	46.7	45.3
United States	27.0	26.8	26.6	26.9	28.9	31.3	31.6	30.8	29.6	28.4	28.4	28.5	28.8	28.5	28.4	28.6	38.1
Japan
United Kingdom	34.3	34.7	34.8	34.7	35.6	39.4	39.4	38.0	37.7	35.7	35.3	34.8	34.0	33.0	33.1	33.3	43.0	39.5
Canada

Interest payments*(as a percentage of GDP)*

	2004	2005	2006	2007	2008	2009	2010	2011	2012	2013	2014	2015	2016	2017	2018	2019	2020	2021
Italy	4.6	4.5	4.4	4.7	4.9	4.4	4.3	4.6	5.2	4.8	4.6	4.1	3.9	3.8	3.6	3.4	3.5	3.5
Belgium	4.9	4.4	4.1	4.0	4.0	3.9	3.6	3.5	3.5	3.3	3.2	2.9	2.7	2.4	2.1	2.0	1.9	1.7
Germany	2.8	2.8	2.7	2.7	2.7	2.6	2.5	2.5	2.3	1.8	1.6	1.4	1.2	1.0	0.9	0.8	0.6	0.6
Estonia	0.2	0.2	0.2	0.2	0.2	0.2	0.1	0.1	0.1	0.1	0.1	0.1	0.0	0.0	0.0	0.0	0.0	0.0
Ireland	1.1	1.0	1.0	1.0	1.3	2.0	2.8	3.4	4.2	4.3	3.9	2.6	2.3	2.0	1.6	1.3	1.0	0.8
Greece	4.8	4.7	4.4	4.5	4.8	5.0	6.1	7.7	5.3	4.1	4.0	3.6	3.2	3.1	3.4	3.0	3.0	2.5
Spain	2.0	1.7	1.6	1.6	1.6	1.7	1.9	2.5	3.0	3.6	3.5	3.0	2.8	2.5	2.4	2.3	2.2	2.2
France	2.8	2.7	2.6	2.7	2.9	2.5	2.5	2.7	2.6	2.3	2.2	2.0	1.8	1.7	1.7	1.4	1.3	1.4
Cyprus	3.0	3.2	3.0	2.8	2.6	2.3	2.0	2.1	3.3	3.2	3.3	3.1	2.6	2.5	2.4	2.2	2.1	1.8
Latvia	0.7	0.5	0.5	0.4	0.6	1.5	1.8	1.8	1.7	1.5	1.3	1.2	1.0	0.9	0.7	0.7	0.7	0.5
Lithuania	0.9	0.8	0.7	0.7	0.7	1.2	1.8	1.8	2.0	1.8	1.6	1.5	1.3	1.1	0.9	0.9	0.7	0.4
Luxembourg	0.2	0.2	0.2	0.3	0.3	0.4	0.4	0.5	0.5	0.5	0.4	0.4	0.4	0.4	0.4	0.3	0.2	0.2
Malta	3.7	3.8	3.7	3.5	3.3	3.2	3.0	3.2	3.0	2.8	2.7	2.3	2.1	1.8	1.5	1.3	1.3	1.2
Netherlands	2.3	2.2	2.0	2.0	2.0	2.0	1.8	1.8	1.7	1.6	1.5	1.3	1.2	1.0	0.9	0.8	0.7	0.6
Austria	3.0	3.2	3.1	3.1	2.9	3.1	2.9	2.8	2.7	2.6	2.4	2.3	2.1	1.8	1.6	1.4	1.3	1.1
Portugal	2.6	2.6	2.8	3.0	3.1	3.0	2.9	4.3	4.9	4.8	4.9	4.6	4.1	3.8	3.4	3.0	2.9	2.4
Slovenia	1.7	1.5	1.4	1.2	1.1	1.3	1.6	1.9	2.0	2.5	3.2	3.2	3.0	2.5	2.0	1.7	1.6	1.3
Slovakia	2.2	1.7	1.5	1.4	1.3	1.5	1.3	1.5	1.8	1.9	1.9	1.8	1.7	1.4	1.4	1.2	1.2	1.1
Finland	1.7	1.6	1.5	1.4	1.4	1.3	1.3	1.4	1.4	1.3	1.2	1.2	1.1	1.0	0.9	0.8	0.7	0.5
<i>Euro area</i>	3.0	2.9	2.8	2.9	3.0	2.8	2.8	3.0	3.0	2.8	2.6	2.3	2.1	1.9	1.8	1.6	1.5	1.5
<i>Euro area excluding Italy</i> ..	2.7	2.6	2.5	2.5	2.5	2.5	2.5	2.7	2.6	2.4	2.2	2.0	1.8	1.6	1.5	1.3	1.2	1.1
Bulgaria	1.8	1.6	1.3	1.1	0.8	0.7	0.7	0.7	0.8	0.8	0.9	0.9	0.9	0.8	0.7	0.6	0.5	0.5
Czech Republic	1.1	1.1	1.0	1.1	1.0	1.2	1.3	1.3	1.4	1.3	1.3	1.1	0.9	0.7	0.7	0.7	0.8	0.7
Denmark	2.5	2.1	1.8	1.6	1.4	1.9	1.9	2.0	1.8	1.7	1.5	1.6	1.3	0.8	0.8	0.7	0.5	0.5
Croatia	1.8	1.8	1.6	1.6	1.8	2.2	2.4	2.6	3.0	3.1	3.4	3.4	3.1	2.6	2.3	2.2	2.0	1.6
Hungary	4.3	4.1	3.8	4.0	4.1	4.5	4.1	4.1	4.5	4.5	4.0	3.4	3.1	2.6	2.3	2.2	2.3	2.3
Poland	2.7	2.5	2.4	2.2	2.1	2.5	2.5	2.5	2.7	2.5	2.0	1.8	1.7	1.6	1.4	1.4	1.3	1.1
Romania	1.5	1.2	0.8	0.7	0.7	1.4	1.6	1.7	1.9	1.9	1.8	1.6	1.5	1.3	1.0	1.1	1.4	1.4
Sweden	1.9	1.8	1.8	1.7	1.6	1.3	1.1	1.3	1.0	0.9	0.7	0.5	0.5	0.4	0.5	0.4	0.3	0.2
<i>EU excluding euro area</i> ..	2.3	2.1	1.9	1.8	1.7	1.9	1.9	2.0	2.0	1.9	1.6	1.4	1.3	1.1	1.0	1.0	1.0	0.9
<i>EU</i>	3.0	2.8	2.7	2.7	2.8	2.7	2.7	2.9	2.9	2.7	2.5	2.2	2.0	1.8	1.7	1.5	1.4	1.4
<i>EU excluding Italy</i>	2.6	2.5	2.4	2.4	2.4	2.4	2.4	2.6	2.5	2.3	2.1	1.9	1.7	1.5	1.4	1.3	1.1	1.1
United States	3.8	3.9	4.0	4.1	3.9	4.2	4.2	4.3	4.2	4.0	3.9	3.8	3.9	3.9	4.0	4.1	3.9
Japan	1.7	1.7	1.8	1.9	2.0	1.9	2.0	2.0	1.9	1.9	1.8	1.7	1.6	1.5	1.5	1.5
United Kingdom	1.8	1.9	1.9	2.1	2.1	1.8	2.8	3.1	2.8	2.8	2.6	2.3	2.4	2.6	2.4	2.1	1.9	2.6
Canada	4.8	4.4	4.2	3.9	3.7	3.7	3.6	3.6	3.4	3.3	3.1	3.1	3.0	2.8	2.9	3.0	3.0	2.7

Final consumption expenditure

(as a percentage of GDP)

	2004	2005	2006	2007	2008	2009	2010	2011	2012	2013	2014	2015	2016	2017	2018	2019	2020	2021
Italy	19.2	19.6	19.5	19.0	19.6	20.7	20.6	19.8	19.8	19.8	19.5	19.1	19.0	18.8	18.9	18.6	20.8	19.8
Belgium	22.2	22.1	21.9	21.6	22.7	24.2	23.7	24.0	24.3	24.3	24.2	23.6	23.3	23.0	23.1	23.0	24.7	23.7
Germany	18.8	18.8	18.3	17.9	18.3	20.0	19.6	19.1	19.3	19.6	19.6	19.7	19.9	19.8	19.9	20.3	22.4	22.4
Estonia	17.4	16.9	15.8	15.9	18.4	20.5	19.6	18.4	18.2	18.6	18.7	19.6	19.7	19.3	19.2	19.5	21.3	20.3
Ireland	16.2	16.1	16.2	16.8	18.7	20.0	18.7	19.1	18.2	17.1	16.4	12.5	12.7	12.3	12.0	11.9	12.8	12.1
Greece	19.2	20.0	20.2	20.5	20.7	23.3	22.4	22.1	22.3	20.7	20.6	20.6	20.6	20.5	19.8	20.1	22.9	21.5
Spain	17.2	17.3	17.4	17.7	18.8	20.6	20.6	20.7	20.0	19.9	19.6	19.5	19.1	18.6	18.7	18.8	21.9	21.4
France	23.0	23.1	22.8	22.4	22.6	24.1	24.0	23.7	24.0	24.1	24.1	23.8	23.7	23.6	23.3	23.0	24.9	23.7
Cyprus	16.6	16.5	16.9	16.4	17.1	18.8	18.5	19.1	18.8	18.5	16.8	16.4	15.2	14.8	14.6	16.1	19.9	20.1
Latvia	19.8	17.9	17.2	17.6	19.7	19.0	18.4	18.8	17.5	17.9	18.0	18.4	18.1	18.3	18.2	19.3	20.7	20.0
Lithuania	19.2	18.5	19.1	17.5	18.7	21.3	19.8	18.3	17.5	16.7	16.6	17.2	17.0	16.3	16.4	16.9	18.5	18.3
Luxembourg	16.4	16.6	15.2	14.4	14.5	16.1	15.8	16.1	16.3	16.4	16.1	16.0	15.7	16.2	16.7	17.2	18.5	17.2
Malta	19.2	18.4	18.8	18.2	19.8	19.7	19.0	19.5	19.7	18.7	18.4	17.0	15.8	14.6	15.5	16.6	21.1	21.0
Netherlands	22.5	22.3	23.2	23.2	23.5	26.0	26.2	25.8	26.0	25.8	25.7	25.0	24.7	24.3	24.4	24.6	26.0	26.2
Austria	18.9	19.3	19.3	18.7	19.3	20.7	20.5	19.9	19.9	19.9	19.8	19.8	19.7	19.5	19.3	19.4	21.2	21.8
Portugal	20.4	21.0	20.3	19.6	19.8	21.3	20.6	19.7	18.3	18.8	18.4	17.9	17.6	17.2	17.0	17.0	19.1	19.0
Slovenia	18.8	18.9	18.7	17.5	18.2	20.2	20.4	20.6	20.4	19.6	18.9	18.8	19.0	18.5	18.3	18.3	20.6	20.2
Slovakia	18.8	18.5	18.8	17.1	17.5	20.0	19.3	18.4	17.9	18.1	18.4	18.6	18.9	18.9	18.6	19.5	21.2	21.7
Finland	21.2	21.4	21.3	20.8	21.6	24.1	23.7	23.4	24.1	24.5	24.5	24.4	23.7	22.8	22.9	23.2	24.3	24.1
<i>Euro area</i>	20.0	20.1	19.9	19.6	20.1	21.8	21.5	21.2	21.2	21.3	21.1	20.8	20.7	20.5	20.4	20.5	22.5	22.0
<i>Euro area excluding Italy</i>	20.2	20.2	20.0	19.7	20.2	22.0	21.7	21.4	21.5	21.5	21.4	21.1	21.0	20.8	20.7	20.8	22.8	22.4
Bulgaria	19.4	18.2	18.1	16.7	17.2	16.7	16.5	15.9	15.8	17.1	16.8	16.1	15.6	15.6	16.4	16.7	19.5	20.0
Czech Republic	20.7	20.3	19.9	19.1	19.1	20.7	20.5	19.8	19.5	19.7	19.3	18.9	19.0	18.8	19.4	19.6	21.8	21.5
Denmark	24.9	24.5	24.2	24.3	25.1	27.9	27.4	26.6	26.5	26.0	25.8	25.5	24.9	24.4	24.3	24.1	24.7	24.4
Croatia	19.3	19.2	19.1	19.9	19.4	21.3	21.3	21.5	21.6	21.5	21.8	21.1	20.7	20.6	20.6	20.6	24.0	22.5
Hungary	22.0	22.1	22.0	20.8	21.4	22.0	21.4	20.6	19.9	19.7	20.0	19.7	20.0	20.2	19.7	19.8	21.0	20.5
Poland	18.3	18.3	18.5	18.2	18.7	18.8	19.2	18.1	18.1	18.3	18.3	18.1	17.9	17.7	17.7	18.0	19.1	18.7
Romania	14.7	16.2	15.9	15.4	15.9	16.1	15.4	14.2	14.5	14.3	14.5	14.0	15.1	15.7	16.8	17.7	18.8	17.5
Sweden	25.0	24.9	24.6	24.1	24.6	26.0	25.0	24.9	25.8	26.2	26.1	25.7	26.4	26.0	26.1	25.8	26.7	26.2
<i>EU excluding euro area</i>	22.1	21.7	21.5	20.9	21.1	22.3	22.0	21.4	21.6	21.7	21.6	21.2	21.3	21.0	21.1	21.1	22.3	21.8
<i>EU</i>	20.2	20.3	20.1	19.8	20.3	21.9	21.6	21.2	21.2	21.3	21.2	20.8	20.8	20.6	20.5	20.6	22.5	22.0
<i>EU excluding Italy</i>	20.4	20.4	20.2	19.9	20.4	22.1	21.8	21.4	21.5	21.6	21.4	21.1	21.1	20.8	20.8	20.9	22.7	22.3
United States	15.2	15.0	15.0	15.2	15.9	16.8	16.7	16.1	15.5	15.0	14.6	14.3	14.2	14.0	14.0	13.9	14.7
Japan	17.7	17.6	17.6	18.0	19.3	19.2	19.9	20.0	19.9	19.9	19.6	19.7	19.4	19.6	19.9	21.0
United Kingdom	19.5	19.7	19.8	19.7	20.4	22.0	21.6	21.0	20.8	20.1	19.8	19.4	19.0	18.6	18.4	18.9	22.3	22.1
Canada	19.4	19.1	19.2	19.3	19.7	22.0	21.5	21.1	21.1	20.7	20.3	20.9	21.0	20.7	20.7	20.7	22.7	21.7

Compensation of employees

(as a percentage of GDP)

	2004	2005	2006	2007	2008	2009	2010	2011	2012	2013	2014	2015	2016	2017	2018	2019	2020	2021
Italy	10.4	10.6	10.7	10.3	10.5	11.0	10.8	10.4	10.3	10.3	10.2	9.9	9.8	9.6	9.7	9.6	10.5	9.9
Belgium	11.7	11.8	11.7	11.5	11.9	12.7	12.5	12.5	12.7	12.9	12.9	12.6	12.5	12.4	12.4	12.3	13.2	12.3
Germany	8.1	8.1	7.8	7.5	7.5	8.2	8.0	7.8	7.8	7.8	7.8	7.7	7.7	7.7	7.7	7.9	8.4	8.2
Estonia	10.0	9.7	9.0	9.2	10.8	11.9	11.0	10.1	9.8	10.2	10.4	10.8	10.8	10.6	10.7	11.0	12.0	11.2
Ireland	9.3	9.7	9.8	10.1	11.3	12.2	11.5	12.0	11.2	10.5	9.8	7.4	7.4	7.1	6.8	6.6	6.6	6.2
Greece	11.3	11.4	11.0	11.1	11.6	13.1	12.5	12.8	13.0	12.2	12.3	12.2	12.3	12.2	12.1	12.0	13.5	12.3
Spain	9.8	9.8	9.8	10.0	10.6	11.7	11.6	11.5	11.0	11.2	11.1	11.1	10.9	10.6	10.6	10.8	12.5	12.2
France	12.9	12.8	12.6	12.4	12.4	13.1	13.0	12.8	12.9	12.9	13.0	12.8	12.7	12.7	12.4	12.2	13.2	12.5
Cyprus	13.6	13.5	13.5	13.2	13.2	14.6	14.2	14.6	14.6	14.4	13.4	12.7	12.0	11.7	11.5	11.9	13.4	12.8
Latvia	10.1	9.8	9.6	10.2	11.6	12.2	10.5	10.1	9.4	9.7	9.8	10.1	10.3	10.5	10.6	10.8	11.7	11.7
Lithuania	10.8	10.3	10.4	9.8	10.6	12.7	10.9	10.2	9.7	9.6	9.5	9.7	9.8	9.5	9.7	10.2	11.3	10.9
Luxembourg	10.1	10.0	9.4	8.9	8.9	9.7	9.5	9.5	9.6	9.5	9.4	9.4	9.2	9.5	9.9	10.1	10.8	9.9
Malta	13.6	13.1	12.7	12.4	13.6	13.4	12.7	12.9	12.8	12.5	12.2	11.4	11.4	10.9	10.8	10.8	12.1	12.2
Netherlands	8.9	8.7	8.4	8.2	8.3	9.1	9.1	8.9	8.9	8.8	8.7	8.5	8.5	8.4	8.3	8.2	8.8	8.6
Austria	10.8	11.0	10.8	10.5	10.6	11.3	11.2	10.8	10.7	10.7	10.6	10.7	10.6	10.6	10.5	10.5	11.4	11.0
Portugal	14.3	14.5	13.8	13.1	13.1	14.0	13.7	12.8	11.7	12.5	11.8	11.3	11.2	10.9	10.7	10.8	12.0	11.8
Slovenia	11.5	11.5	11.2	10.5	11.0	12.3	12.5	12.6	12.5	11.9	11.3	11.1	11.3	11.2	11.1	11.3	12.9	12.6
Slovakia	8.0	8.0	7.9	7.3	7.5	8.6	8.5	8.4	8.3	8.8	8.9	8.9	9.3	9.4	9.4	10.2	11.4	11.6
Finland	13.2	13.3	13.0	12.5	12.8	14.2	14.0	13.9	14.2	14.3	14.1	13.8	13.2	12.4	12.4	12.5	12.8	12.6
<i>Euro area</i>	10.3	10.3	10.2	9.9	10.1	10.9	10.7	10.5	10.4	10.4	10.3	10.1	10.0	9.9	9.9	9.9	10.7	10.3
<i>Euro area excluding Italy</i> ..	10.3	10.3	10.1	9.9	10.1	10.9	10.7	10.5	10.4	10.4	10.4	10.1	10.1	10.0	9.9	9.9	10.7	10.3
Bulgaria	9.8	9.2	8.5	8.5	8.8	9.3	9.0	8.6	8.6	9.5	9.5	9.3	8.9	9.1	9.5	10.0	10.8	11.7
Czech Republic	8.6	8.6	8.6	8.3	8.3	8.9	8.9	8.6	8.8	8.9	8.7	8.6	8.7	9.0	9.6	9.9	11.1	11.0
Denmark	16.1	15.7	15.4	15.3	15.6	17.5	17.3	16.8	16.6	16.4	16.2	16.0	15.5	15.2	15.1	15.0	15.4	15.0
Croatia	11.6	11.2	10.9	11.3	11.2	12.3	12.1	12.0	12.0	11.7	11.4	11.4	11.3	11.2	11.6	11.6	13.3	12.5
Hungary	12.4	12.3	11.9	11.4	11.3	11.2	10.7	10.0	9.9	10.1	10.3	10.4	10.8	10.8	10.5	10.3	10.8	10.2
Poland	10.9	10.9	10.7	10.5	10.8	11.0	11.1	10.7	10.5	10.6	10.6	10.4	10.4	10.2	10.1	10.3	10.9	10.5
Romania	8.2	8.8	9.3	9.5	10.0	10.3	9.6	7.9	7.8	8.1	7.9	7.8	9.0	9.8	11.0	11.3	12.1	11.1
Sweden	12.9	12.8	12.5	12.4	12.5	12.8	12.2	12.1	12.5	12.7	12.6	12.4	12.6	12.6	12.7	12.6	13.1	12.7
<i>EU excluding euro area</i> ..	12.3	12.1	11.8	11.5	11.6	12.3	12.0	11.5	11.6	11.7	11.6	11.4	11.5	11.5	11.6	11.7	12.3	11.9
<i>EU</i>	10.5	10.5	10.4	10.1	10.3	11.1	10.9	10.6	10.6	10.6	10.5	10.3	10.2	10.1	10.1	10.1	10.9	10.5
<i>EU excluding Italy</i>	10.6	10.5	10.3	10.1	10.3	11.1	10.9	10.7	10.6	10.6	10.6	10.3	10.3	10.2	10.2	10.2	11.0	10.6
United States	10.2	10.0	9.9	9.9	10.2	10.8	10.7	10.4	10.0	9.9	9.7	9.7	9.6	9.5	9.4	9.3	9.7
Japan	5.9	5.9	5.9	5.9	6.1	5.8	6.0	5.8	5.6	5.6	5.4	5.4	5.3	5.3	5.3	5.5
United Kingdom	10.1	10.3	10.3	10.1	10.1	10.7	10.6	10.2	9.9	9.3	9.1	8.9	8.9	8.8	8.8	9.0	10.1	10.0
Canada	11.7	11.5	11.6	11.7	11.9	13.2	12.8	12.6	12.5	12.5	12.2	12.5	12.6	12.4	12.4	12.4	13.3	12.7

Social benefits other than social transfers in kind*(as a percentage of GDP)*

	2004	2005	2006	2007	2008	2009	2010	2011	2012	2013	2014	2015	2016	2017	2018	2019	2020	2021
Italy	16.2	16.2	16.2	16.4	16.9	18.5	18.5	18.5	19.2	19.8	20.1	20.1	19.8	19.7	19.7	20.1	24.1	22.5
Belgium	15.2	15.1	14.8	14.8	15.4	16.8	16.4	16.5	16.9	17.4	17.2	17.0	16.9	16.9	16.8	16.7	20.0	17.9
Germany	18.2	18.0	17.2	16.1	15.9	17.4	16.8	15.8	15.7	15.6	15.4	15.5	15.5	15.5	15.4	15.7	17.7	17.1
Estonia	9.3	8.9	8.7	8.5	10.6	14.4	13.4	11.7	11.2	11.1	11.0	11.9	12.2	11.9	12.2	12.3	14.1	12.8
Ireland	8.5	8.9	9.1	9.7	11.6	14.3	14.3	13.9	13.9	13.2	11.8	8.8	8.5	7.8	7.2	6.8	8.2	7.1
Greece	12.8	13.6	14.0	14.6	16.0	17.5	17.9	19.9	20.6	19.1	19.8	19.9	20.1	19.4	19.2	18.9	20.8	19.5
Spain	11.5	11.4	11.3	11.4	12.3	14.4	15.1	15.3	16.3	16.7	16.5	15.8	15.6	15.3	15.4	15.8	20.4	18.9
France	17.4	17.5	17.6	17.5	17.6	19.2	19.2	19.2	19.5	19.9	20.0	19.8	19.8	19.6	19.4	19.4	22.4	20.4
Cyprus	11.0	11.6	11.0	10.4	10.8	11.9	12.7	13.1	13.2	13.8	14.1	13.8	13.5	12.9	12.5	12.3	13.9	13.1
Latvia	9.0	8.4	8.0	7.0	8.0	12.8	13.1	11.5	10.3	10.4	10.2	10.4	10.5	10.3	10.3	10.6	12.1	12.6
Lithuania	9.8	9.3	9.2	9.7	11.5	16.2	14.3	12.5	11.9	11.3	10.8	10.9	11.0	10.9	11.8	12.1	14.8	13.2
Luxembourg	15.2	15.2	14.2	13.4	13.9	15.8	15.1	14.9	15.1	15.1	14.9	14.7	14.5	14.8	14.9	15.2	17.3	14.9
Malta	11.8	11.9	11.7	11.8	11.6	12.3	11.8	12.1	12.0	11.6	11.0	9.9	9.7	8.9	8.4	8.0	9.2	8.6
Netherlands	10.7	10.4	10.1	9.8	9.8	10.8	11.1	11.3	11.6	12.0	11.9	11.7	11.5	11.1	10.7	10.4	11.1	10.6
Austria	18.7	18.3	18.0	17.4	17.6	19.0	19.2	18.5	18.7	19.0	19.1	18.9	18.7	18.2	17.9	17.9	20.4	19.6
Portugal	13.7	14.2	14.3	14.2	14.7	16.5	16.6	17.2	17.8	18.6	18.0	17.6	17.2	16.6	16.3	16.2	18.0	17.6
Slovenia	16.5	16.5	16.0	15.0	15.3	17.0	17.7	18.1	18.0	17.9	17.3	16.9	16.3	15.9	15.3	15.2	17.3	16.3
Slovakia	12.6	12.7	12.2	11.9	11.6	14.1	14.2	13.7	14.0	14.1	14.0	13.7	13.9	13.6	13.3	13.4	14.9	15.4
Finland	15.9	15.7	15.3	14.5	14.6	17.2	17.4	17.1	17.9	18.8	19.5	19.7	19.4	18.8	18.4	18.2	19.5	18.4
<i>Euro area</i>	15.8	15.8	15.5	15.1	15.4	17.1	17.0	16.8	17.1	17.3	17.3	17.1	16.9	16.7	16.6	16.7	19.3	18.0
<i>Euro area excluding Italy</i> ..	15.8	15.7	15.3	14.9	15.1	16.8	16.7	16.4	16.7	16.9	16.8	16.5	16.4	16.2	16.0	16.1	18.4	17.3
Bulgaria	10.8	10.2	9.8	9.1	9.6	11.3	11.8	11.0	11.0	11.8	12.2	11.8	11.5	11.1	10.9	10.6	12.0	12.7
Czech Republic	11.7	11.7	11.8	12.1	12.2	13.3	13.4	13.4	13.6	13.6	13.2	12.8	12.6	12.2	12.2	12.2	14.4	14.0
Denmark	16.9	16.2	15.2	14.8	14.6	16.6	17.1	17.2	17.3	17.4	17.2	17.0	16.5	16.1	15.8	15.8	16.6	15.5
Croatia	13.4	12.4	13.2	12.5	12.1	13.6	13.6	14.0	13.9	14.0	14.3	14.3	13.4	13.1	13.0	12.9	14.6	13.2
Hungary	13.7	14.2	14.6	15.0	15.5	16.0	15.4	15.2	15.0	14.7	13.7	12.8	12.5	11.9	11.3	10.7	11.1	10.8
Poland	16.0	15.7	15.2	14.2	14.0	14.5	14.6	13.9	14.0	14.6	14.5	14.3	15.2	15.1	14.9	15.4	16.7	16.0
Romania	9.0	9.1	8.9	9.0	9.9	12.0	12.8	12.0	11.2	10.7	10.5	10.6	10.7	10.8	10.7	11.0	12.8	12.5
Sweden	15.1	14.8	14.3	13.5	13.5	14.6	13.8	13.2	13.8	14.1	13.7	13.2	13.1	12.8	12.6	12.3	12.9	12.2
<i>EU excluding euro area</i> ..	14.7	14.3	13.9	13.3	13.3	14.5	14.5	14.0	14.2	14.4	14.1	13.8	13.8	13.5	13.3	13.3	14.5	13.9
<i>EU</i>	15.7	15.6	15.3	14.9	15.1	16.8	16.7	16.4	16.7	16.9	16.8	16.6	16.5	16.2	16.1	16.2	18.6	17.4
<i>EU excluding Italy</i>	15.6	15.5	15.1	14.6	14.8	16.5	16.4	16.0	16.3	16.5	16.3	16.0	16.0	15.7	15.5	15.6	17.8	16.7
United States	11.6	11.5	11.6	11.8	13.1	14.7	15.3	14.9	14.4	14.3	14.3	14.6	14.6	14.5	14.4	14.5	20.2
Japan	10.2	10.4	10.6	11.1	12.4	12.6	13.0	13.0	12.9	12.6	12.4	12.4	12.3	12.3	12.3	12.9
United Kingdom	12.0	11.9	11.6	11.8	12.3	14.0	14.1	14.0	14.3	13.9	13.6	13.5	13.1	12.7	12.5	12.4	13.9	13.3
Canada	8.4	8.2	8.4	8.5	8.6	9.8	9.7	9.3	9.2	9.2	9.0	9.6	10.0	10.0	9.9	10.0	15.9	12.5

Capital expenditure*(as a percentage of GDP)*

	2004	2005	2006	2007	2008	2009	2010	2011	2012	2013	2014	2015	2016	2017	2018	2019	2020	2021
Italy	4.5	4.6	5.5	4.5	4.3	5.1	4.2	3.9	3.9	3.5	3.6	4.1	3.3	3.8	3.3	3.5	5.3	6.0
Belgium	3.0	5.6	3.0	3.3	3.4	3.9	3.9	4.7	5.1	4.4	4.1	3.6	3.3	3.2	3.4	3.4	3.6	3.8
Germany	3.5	3.6	3.4	3.2	3.7	3.8	4.9	3.5	3.3	3.2	3.2	3.1	3.3	3.5	3.6	3.6	4.1	4.4
Estonia	4.4	4.8	5.4	6.5	7.4	7.5	4.4	4.5	7.2	6.2	5.8	5.9	5.3	6.2	5.8	5.3	6.8	6.2
Ireland	4.4	4.3	4.5	5.6	7.0	7.3	25.5	7.3	2.9	2.6	2.8	3.1	2.5	2.4	2.6	2.7	2.8	2.5
Greece	8.0	5.4	5.2	5.7	7.2	6.6	5.1	4.1	7.1	17.0	4.7	8.3	3.9	3.7	4.2	4.0	8.7	7.4
Spain	5.8	5.6	5.7	6.0	6.0	6.5	5.8	5.1	8.0	3.9	3.3	3.4	2.8	2.7	3.1	3.0	4.0	4.9
France	4.9	5.0	5.0	5.0	5.2	5.6	5.4	5.2	5.4	5.2	4.9	4.7	4.6	5.1	4.6	4.8	5.1	5.3
Cyprus	4.5	4.0	4.2	4.0	4.1	5.4	5.7	4.8	3.6	4.7	12.2	4.1	3.2	3.3	10.2	4.4	3.6	3.4
Latvia	4.7	4.5	6.4	6.6	5.4	5.9	6.9	7.3	5.5	5.1	4.7	5.0	3.8	5.3	6.2	5.0	6.7	7.0
Lithuania	4.1	3.9	4.6	6.3	5.9	4.9	5.3	8.9	4.1	4.8	4.8	4.5	3.6	3.7	3.6	3.5	5.1	3.7
Luxembourg	6.5	6.6	5.2	4.9	4.7	5.5	5.9	5.3	5.0	4.5	4.5	4.6	4.8	5.0	5.1	5.2	6.1	5.4
Malta	3.8	4.9	4.6	3.9	3.0	3.1	3.3	4.2	4.4	4.1	4.5	5.3	3.4	3.3	4.5	4.7	5.9	5.4
Netherlands	4.1	3.8	3.9	3.9	4.2	5.3	5.0	4.4	4.2	4.1	3.7	3.7	3.7	3.3	3.4	3.4	3.8	3.7
Austria	7.4	4.2	4.3	4.5	4.5	5.6	4.6	4.2	4.4	4.4	5.4	4.3	3.7	4.0	3.7	3.8	4.2	4.2
Portugal	5.6	5.0	4.0	3.7	3.9	4.9	7.2	4.4	3.6	3.2	6.1	4.3	2.0	4.4	3.0	2.8	4.4	3.8
Slovenia	5.2	4.6	4.9	5.4	5.9	5.9	5.5	5.8	4.6	15.6	7.5	6.0	3.6	3.7	4.2	4.4	4.7	5.2
Slovakia	3.5	5.0	4.6	3.8	4.2	5.8	4.5	4.5	3.9	4.0	4.6	7.2	4.1	3.6	4.1	4.0	4.3	3.5
Finland	4.2	3.9	3.5	3.7	3.9	4.4	4.0	4.2	4.4	4.5	4.5	4.0	4.4	4.2	4.4	4.5	5.1	4.7
<i>Euro area</i>	4.5	4.5	4.5	4.4	4.6	5.1	5.3	4.4	4.6	4.3	3.9	3.9	3.6	3.8	3.7	3.8	4.5	4.8
<i>Euro area excluding Italy</i>	4.6	4.5	4.3	4.4	4.7	5.1	5.6	4.5	4.8	4.4	4.0	3.9	3.6	3.8	3.8	3.8	4.4	4.6
Bulgaria	3.9	4.1	4.0	8.1	5.7	5.2	4.9	3.7	4.0	4.6	9.1	7.2	4.0	3.4	4.1	4.5	5.2	4.1
Czech Republic	7.4	7.8	6.9	6.2	6.6	6.8	6.0	5.5	7.0	4.6	5.4	6.0	4.0	4.0	4.9	5.1	6.1	5.5
Denmark	2.9	2.6	2.8	3.1	3.6	3.4	3.7	4.1	5.5	3.9	4.4	4.3	3.9	3.5	3.9	3.3	4.1	3.7
Croatia	9.1	7.4	7.2	7.6	7.7	7.5	6.3	6.6	5.6	5.4	5.7	5.1	5.1	4.0	5.3	6.3	7.9	6.4
Hungary	5.3	5.5	7.0	6.2	4.6	4.9	4.9	5.9	5.2	5.8	7.3	9.3	5.6	6.7	7.6	8.2	11.1	9.6
Poland	3.2	4.3	4.7	4.8	5.5	5.9	6.3	6.6	5.3	4.6	5.1	5.0	3.8	4.6	5.1	4.7	5.7	5.2
Romania	5.4	4.3	6.9	7.7	7.5	6.1	6.6	7.9	6.4	5.6	5.6	6.4	5.3	3.6	4.1	4.6	6.0	5.6
Sweden	4.2	4.3	4.2	4.2	4.4	4.5	4.5	4.6	4.7	4.6	4.6	4.5	4.6	4.7	5.1	5.1	5.4	5.1
<i>EU excluding euro area</i>	4.4	4.5	4.8	5.0	5.2	5.2	5.3	5.5	5.4	4.7	5.2	5.3	4.4	4.4	4.9	4.9	5.9	5.3
<i>EU</i>	4.5	4.5	4.6	4.5	4.7	5.1	5.3	4.6	4.7	4.3	4.1	4.1	3.7	3.9	3.9	3.9	4.7	4.9
<i>EU excluding Italy</i>	4.5	4.5	4.4	4.5	4.8	5.1	5.5	4.7	4.9	4.4	4.2	4.1	3.7	3.9	4.0	4.0	4.6	4.7
United States	6.1	6.2	6.1	6.4	6.8	7.7	7.1	6.8	6.2	6.5	6.0	5.7	5.7	5.7	5.6	5.5	5.8
Japan
United Kingdom	3.8	4.5	3.9	4.0	6.4	5.7	4.9	4.4	4.9	5.1	4.9	4.8	4.7	5.0	4.9	4.9	6.4	5.4
Canada

Investment*(as a percentage of GDP)*

	2004	2005	2006	2007	2008	2009	2010	2011	2012	2013	2014	2015	2016	2017	2018	2019	2020	2021
Italy	3.2	3.2	3.2	3.2	3.2	3.7	3.1	2.9	2.6	2.5	2.3	2.4	2.3	2.2	2.1	2.3	2.6	2.9
Belgium	2.0	2.1	1.9	2.0	2.0	2.3	2.2	2.4	2.5	2.3	2.6	2.5	2.4	2.4	2.6	2.6	2.7	2.7
Germany	1.9	1.9	2.0	2.0	2.1	2.4	2.4	2.3	2.2	2.2	2.1	2.1	2.2	2.2	2.4	2.4	2.6	2.5
Estonia	4.4	4.6	5.4	6.0	6.2	6.1	4.8	5.0	6.3	5.6	5.0	5.2	4.6	5.7	5.3	5.0	5.8	5.7
Ireland	3.5	3.5	3.8	4.7	5.3	3.8	3.4	2.5	2.0	2.0	2.2	1.7	2.0	1.9	2.0	2.3	2.3	2.0
Greece	5.7	4.4	5.7	4.9	5.6	5.7	3.7	2.5	2.6	3.5	3.7	3.9	3.6	4.5	3.2	2.5	3.1	3.6
Spain	4.0	4.2	4.4	4.7	4.7	5.2	4.7	3.8	3.1	2.4	2.1	2.6	2.0	2.0	2.1	2.1	2.6	2.7
France	4.0	4.0	3.9	3.9	3.9	4.3	4.2	4.0	4.0	4.0	3.7	3.4	3.4	3.3	3.4	3.7	3.7	3.6
Cyprus	4.2	3.5	3.4	3.1	3.2	4.2	4.2	4.0	2.9	2.3	2.1	2.2	2.5	2.7	4.9	2.5	2.8	2.7
Latvia	3.7	3.6	5.0	6.0	5.4	5.1	4.8	5.4	5.3	4.7	4.6	4.8	3.6	4.6	5.6	5.1	5.7	5.2
Lithuania	3.6	3.6	4.3	5.4	5.4	4.4	5.0	4.7	4.0	3.7	3.5	3.7	3.0	3.2	3.2	3.1	4.1	3.2
Luxembourg	5.1	5.5	3.6	3.8	3.7	4.2	4.7	4.2	3.9	3.5	3.7	3.9	3.8	4.0	3.9	4.1	4.7	4.0
Malta	3.7	4.5	4.0	3.8	2.5	2.4	2.2	2.9	3.4	2.9	3.5	4.1	2.6	2.4	3.2	3.8	4.5	4.2
Netherlands	3.9	3.7	3.9	3.8	4.0	4.3	4.2	4.1	3.8	3.7	3.5	3.6	3.5	3.4	3.4	3.4	3.6	3.3
Austria	2.4	2.9	2.9	3.0	3.2	3.4	3.2	3.0	2.9	3.0	3.0	3.0	3.0	3.1	3.1	3.1	3.3	3.5
Portugal	4.4	4.1	3.4	3.2	3.7	4.1	5.3	3.5	2.5	2.2	2.0	2.3	1.5	1.8	1.8	1.8	2.2	2.5
Slovenia	4.0	3.8	4.3	4.6	4.7	5.1	5.0	4.1	4.0	4.3	5.1	4.8	3.1	3.1	3.7	3.8	4.1	4.7
Slovakia	2.9	3.5	3.8	3.2	3.4	3.9	3.6	3.7	3.2	3.4	4.1	6.4	3.4	3.4	3.7	3.6	3.5	3.2
Finland	3.9	3.6	3.3	3.5	3.6	3.9	3.6	3.8	4.0	4.2	4.2	3.7	4.1	4.1	4.3	4.4	4.9	4.1
<i>Euro area</i>	3.2	3.2	3.3	3.3	3.4	3.7	3.5	3.2	3.0	2.9	2.7	2.7	2.6	2.6	2.7	2.8	3.0	3.0
<i>Euro area excluding Italy</i>	3.2	3.2	3.3	3.3	3.4	3.7	3.5	3.2	3.1	2.9	2.8	2.8	2.7	2.7	2.8	2.9	3.1	3.0
Bulgaria	3.4	3.7	4.2	5.2	5.6	4.9	4.6	3.4	3.4	4.1	5.3	6.6	2.7	2.3	3.1	3.3	3.8	3.3
Czech Republic	5.0	5.2	5.2	4.7	5.2	6.0	5.1	4.5	4.1	3.7	4.1	5.1	3.2	3.3	4.1	4.4	4.9	4.7
Denmark	2.8	2.7	2.9	3.0	3.0	3.1	3.3	3.3	3.8	3.7	3.9	3.6	3.8	3.4	3.4	3.2	3.6	3.5
Croatia	6.5	5.7	5.7	6.2	6.1	6.0	3.9	3.7	3.8	3.9	3.8	3.5	3.2	2.7	3.5	4.3	5.6	4.8
Hungary	3.8	4.2	5.1	4.2	3.2	3.4	3.6	3.3	3.7	4.3	5.3	6.5	3.2	4.5	5.8	6.2	6.4	5.8
Poland	2.9	3.3	3.9	4.4	4.7	5.0	5.7	6.0	4.9	4.3	4.7	4.5	3.3	3.8	4.7	4.3	4.5	4.1
Romania	2.8	2.9	5.3	6.2	6.5	5.8	5.7	5.5	4.8	4.4	4.3	5.2	3.7	2.6	2.7	3.5	4.6	4.2
Sweden	4.1	4.1	4.1	4.1	4.3	4.4	4.5	4.4	4.5	4.4	4.3	4.2	4.4	4.6	4.9	4.9	5.0	4.8
<i>EU excluding euro area</i>	3.6	3.7	4.2	4.3	4.5	4.6	4.7	4.6	4.4	4.2	4.4	4.6	3.7	3.7	4.2	4.3	4.7	4.3
<i>EU</i>	3.2	3.3	3.4	3.4	3.5	3.8	3.6	3.4	3.2	3.1	3.0	3.0	2.8	2.8	2.9	3.0	3.3	3.2
<i>EU excluding Italy</i>	3.3	3.3	3.4	3.5	3.6	3.8	3.7	3.4	3.3	3.1	3.1	3.1	2.8	2.9	3.0	3.1	3.4	3.2
United States	3.8	3.7	3.8	3.9	4.0	4.2	4.0	3.8	3.6	3.4	3.2	3.2	3.2	3.2	3.2	3.3	3.5
Japan	4.0	3.8	3.6	3.5	3.9	3.8	3.6	3.6	3.9	4.0	3.7	3.7	3.7	3.7	3.9	4.3
United Kingdom	2.4	3.0	2.5	2.5	2.9	3.3	3.1	2.9	2.7	2.5	2.7	2.6	2.6	2.6	2.6	2.8	3.0	3.1
Canada	3.2	3.4	3.5	3.7	3.7	4.6	4.8	4.3	4.2	3.9	3.4	3.7	3.8	3.9	3.9	3.5	4.1	3.6

Methodological appendix

General indications

Data reported in this publication refer to the consolidated general government non-financial accounts and gross debt of the European Union countries and of the remaining G-7 countries (United States, Japan, United Kingdom and Canada). The time series in this publication cover the period 2004-2021. The complete series for the years 1980-2021 can be consulted in the electronic Statistical Database (BDS), available in the Statistics section of the Banca d'Italia web site (<https://infostat.bancaditalia.it/inquiry/>).

Non-financial account data follow the definitions of ESA 2010 (Regulation (EU) No. 549/2013) for the European Union countries since 1995 and for the United Kingdom since 1990. For the years 1980-1994, data for Italy are based on ESA95; data for the other European Union countries follow the ESA79 standard. The definition of gross debt for European countries and the United Kingdom is the one adopted in the Excessive deficit procedure (Regulation (UE) 479/2009 of the European Council). The figures for Germany up to 1990 refer to the former Western Germany.

The sources used are as follows:

- for Italy: Istat, I.Stat data warehouse and <http://seriestoriche.istat.it/> for non-financial accounts and GDP; Banca d'Italia (Statistical Database - BDS) for gross debt;

- for the other European countries: European Commission, DG Economic and Financial Affairs annual macroeconomic database, May 2022;

- for Canada, Japan, United Kingdom and the United States: OECD, National Accounts Statistics Database, as of June 2022, for non-financial accounts; OECD, Statistics and Projections Database, Economic Outlook n. 111, 8 June 2022, for GDP and gross debt; for UK general government debt: UK Office for National Statistics, General government quarterly debt (Maastricht debt, ESA Table 28), 29 April 2022.

For the individual items of the accounts and for gross debt, averages for the years 1995-2021 have been calculated for: (1) the 19 countries belonging to the euro area (Belgium, Germany, Estonia, Ireland, Greece, Spain, France, Italy, Cyprus, Latvia, Lithuania, Luxembourg, Malta, the Netherlands, Austria, Portugal, Slovenia, Slovakia and Finland); (2) the 27 EU countries; (3) the EU countries not belonging to the euro area. The averages are computed as ratios of the sum, for the relevant countries, of the values of the variable under consideration to the sum, for the same countries, of the values of GDP. Where a figure is missing for a country, the average has been calculated omitting that country. Gross debt averages are computed excluding lending provided as financial assistance to euro area member states both bilaterally or via the European Financial Stability Facility (EFSF). Data on financial assistance are provided by Eurostat (Press release 46, 22 April 2022).

Because of rounding, the sum of the separate items may sometimes differ from the total shown.

Prepared by Mauro Bucci; technical assistance by Attilio Mattiocco.

Notes to the tables

The order of the tables in the following notes is based on their code numbers.

TUEE0100 - Net borrowing (+)/lending (-)

The balance of the consolidated general government non-financial accounts, calculated as the difference between total expenditure and total revenue: a positive balance is a deficit (net borrowing), while a negative balance is a surplus (net lending). This item corresponds to the net resources that general government makes available to or draws from other sectors.

TUEE0110 - Primary net borrowing (+)/lending (-)

Net borrowing or lending excluding interest payments (see the notes to Tables TUEE0100 and TUEE0280).

TUEE0120 - Current account balance

The difference between current expenditure and current revenue (see the notes to Tables TUEE0260 and TUEE0160).

TUEE0130 - Capital account balance

The difference between capital expenditure and capital revenue.

TUEE0140 - Gross public debt

For the EU countries and the UK, the definition is that adopted for the Excessive deficit procedure (Council Regulation No. 479/2009). The aggregate refers to general government total gross debt at face value outstanding at the end of the year, consolidated within and between general government subsectors.

TUEE0150 - Total revenue

The sum of current revenue and capital revenue.

TUEE0160 - Current revenue

The sum of direct taxes, indirect taxes, social security contributions and other current revenue.

TUEE0170 - Fiscal burden

The sum of direct and indirect taxes, social security contributions and capital taxes (see the notes to Tables TUEE0210, TUEE0220 and TUEE0230).

TUEE0210 - Direct taxes

Taxes on income and wealth due to general government.

TUEE0220 - Indirect taxes

Taxes on the production and importation of goods and services due to general government.

TUEE0230 - Social security contributions

The sum of actual social security contributions paid by workers and employers (directly or through ad hoc agencies) and imputed social security contributions.

Public finance statistics in the European Union

TUEE0240 - Total expenditure

The sum of current and capital expenditure (see the notes to tables TUEE0260 and TUEE0400).

TUEE0250 - Total expenditure, excluding interest payments

The difference between total expenditure and interest payments (see the notes to Tables TUEE0240 and TUEE0280).

TUEE0260 - Current expenditure

The sum of current transfers, interest payments and final consumption expenditure.

TUEE0270 - Current expenditure, excluding interest payments

The difference between current expenditure and interest payments (see the notes to Tables TUEE0260 and TUEE0280).

TUEE0280 - Interest payments

Interest payments and other borrowing costs. Following the introduction of ESA 2010, this item does not include interest on swaps and forward rate agreements.

TUEE0290 - Final consumption expenditure

Expenditure incurred by general government for the satisfaction of individual or collective needs (compensation of employees, purchases of goods and services, social transfers in kind related to expenditure on products supplied to households via market producers and consumption of fixed capital). Data from 1995 do not include expenditure on research and development and on weapons systems, treated as investment rather than intermediate consumption in ESA2010 (see note to Table TUEE0350).

TUEE0300 - Compensation of employees

General government payments in cash or in kind to employees, including net earnings and actual and imputed social security contributions.

TUEE0330 - Social benefits other than social transfers in kind

Social benefits, including social security and social assistance benefits in cash.

TUEE0350 - Investment

Gross (with respect to depreciation) fixed capital formation, consisting of the value of purchases less sales of durable goods to be utilized in production processes for a period longer than one year. Data from 1995, compiled according to ESA 2010, include expenditure on research and development and on weapons systems.

TUEE0400 - Capital expenditure

Investment (see the note to table TUEE0350), net acquisition of other non-financial assets and capital transfers.

'Statistics' series publications are available on the Bank of Italy's site:

<http://www.bancaditalia.it/statistiche/>

Requests for clarifications concerning data contained in this publication can be sent by e-mail to statistiche@bancaditalia.it

Publication not subject to registration pursuant to Article 3 bis of Law 103/2012